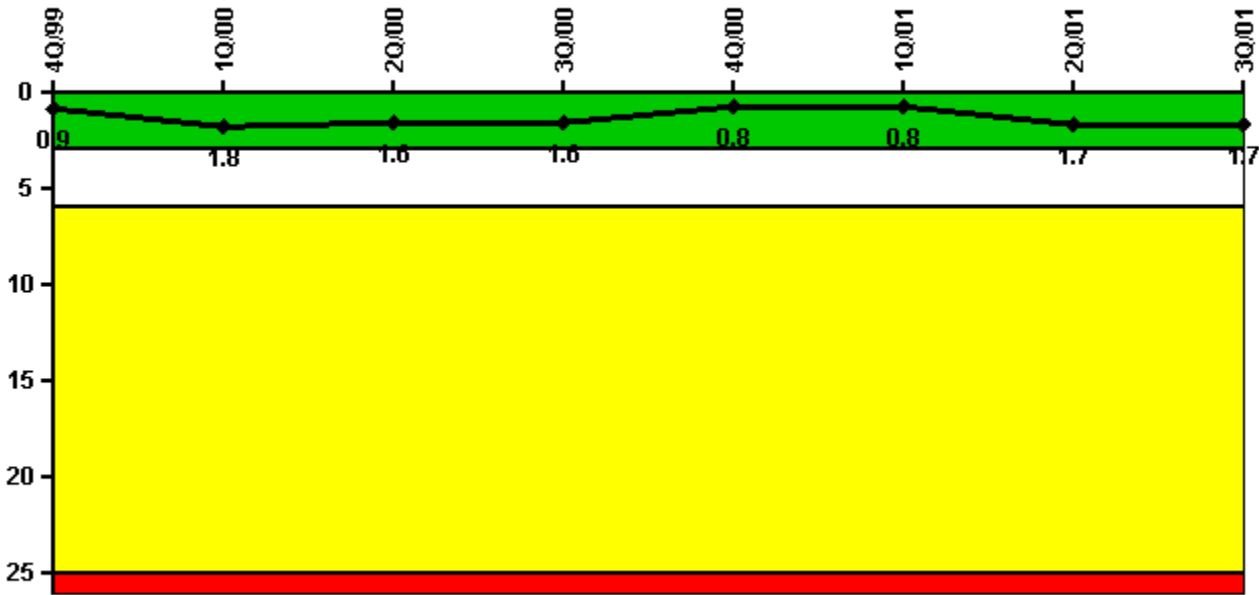


### Limerick 2

#### 3Q/2001 Performance Indicators

Licensee's General Comments: none

#### Unplanned Scrams per 7000 Critical Hrs



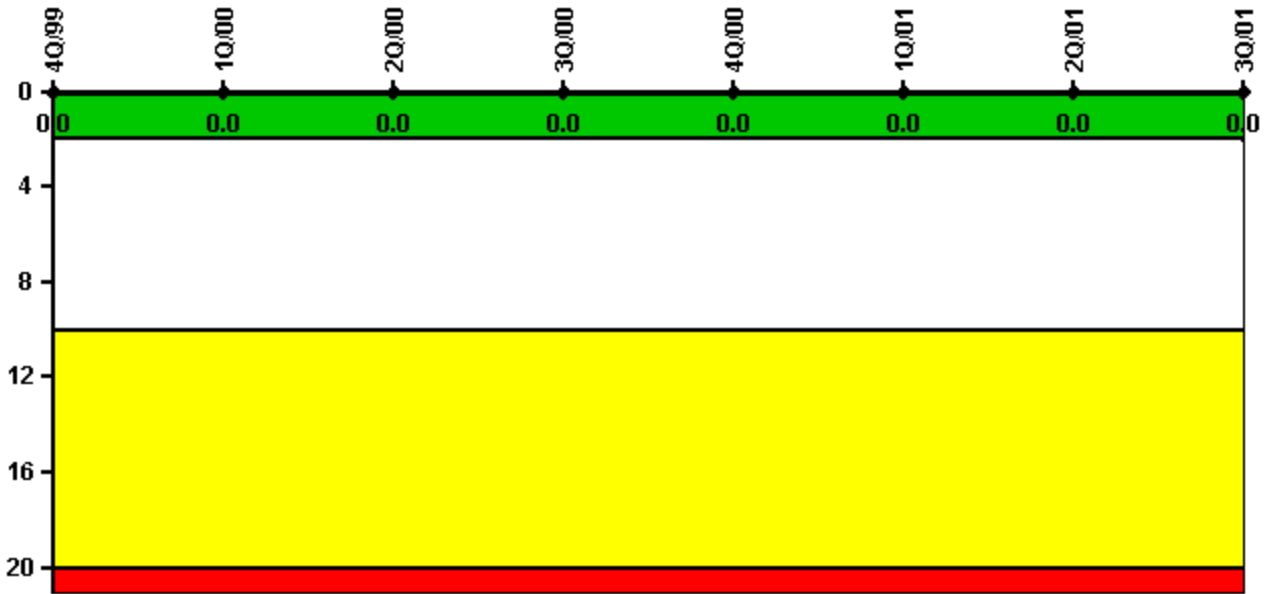
Thresholds: White > 3.0 Yellow > 6.0 Red > 25.0

#### Notes

Unplanned Scrams per 7000 Critical Hrs	4Q/99	1Q/00	2Q/00	3Q/00	4Q/00	1Q/01	2Q/01	3Q/01
Unplanned scrams	1.0	1.0	0	0	0	1.0	1.0	0
Critical hours	2186.2	2120.6	2183.0	2208.0	2209.0	2101.9	1781.4	2208.0
<b>Indicator value</b>	<b>0.9</b>	<b>1.8</b>	<b>1.6</b>	<b>1.6</b>	<b>0.8</b>	<b>0.8</b>	<b>1.7</b>	<b>1.7</b>

Licensee Comments: none

### Scrams with Loss of Normal Heat Removal



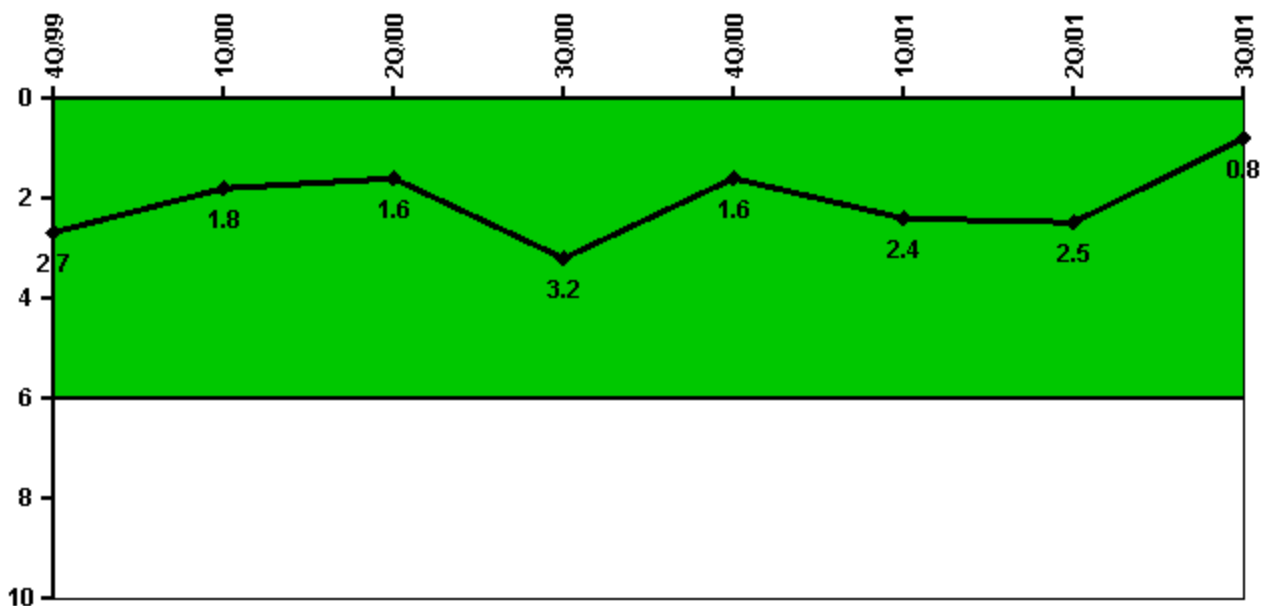
Thresholds: White > 2.0 Yellow > 10.0 Red > 20.0

#### Notes

Scrams with Loss of Normal Heat Removal	4Q/99	1Q/00	2Q/00	3Q/00	4Q/00	1Q/01	2Q/01	3Q/01
Scrams	0	0	0	0	0	0	0	0
Indicator value	0	0	0	0	0	0	0	0

Licensee Comments: none

### Unplanned Power Changes per 7000 Critical Hrs



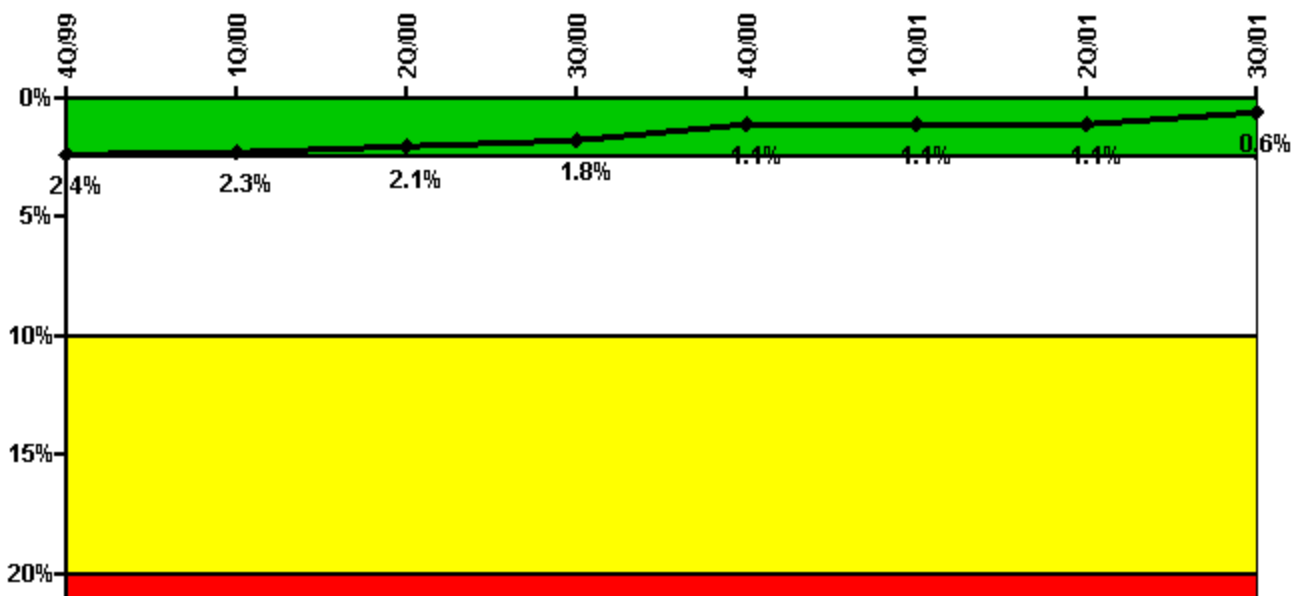
Thresholds: White > 6.0

#### Notes

Unplanned Power Changes per 7000 Critical Hrs	4Q/99	1Q/00	2Q/00	3Q/00	4Q/00	1Q/01	2Q/01	3Q/01
Unplanned power changes	2.0	0	0	2.0	0	1.0	0	0
Critical hours	2186.2	2120.6	2183.0	2208.0	2209.0	2101.9	1781.4	2208.0
Indicator value	2.7	1.8	1.6	3.2	1.6	2.4	2.5	0.8

Licensee Comments: none

### Safety System Unavailability, Emergency AC Power, >2EDG



Thresholds: White > 2.5% Yellow > 10.0% Red > 20.0%

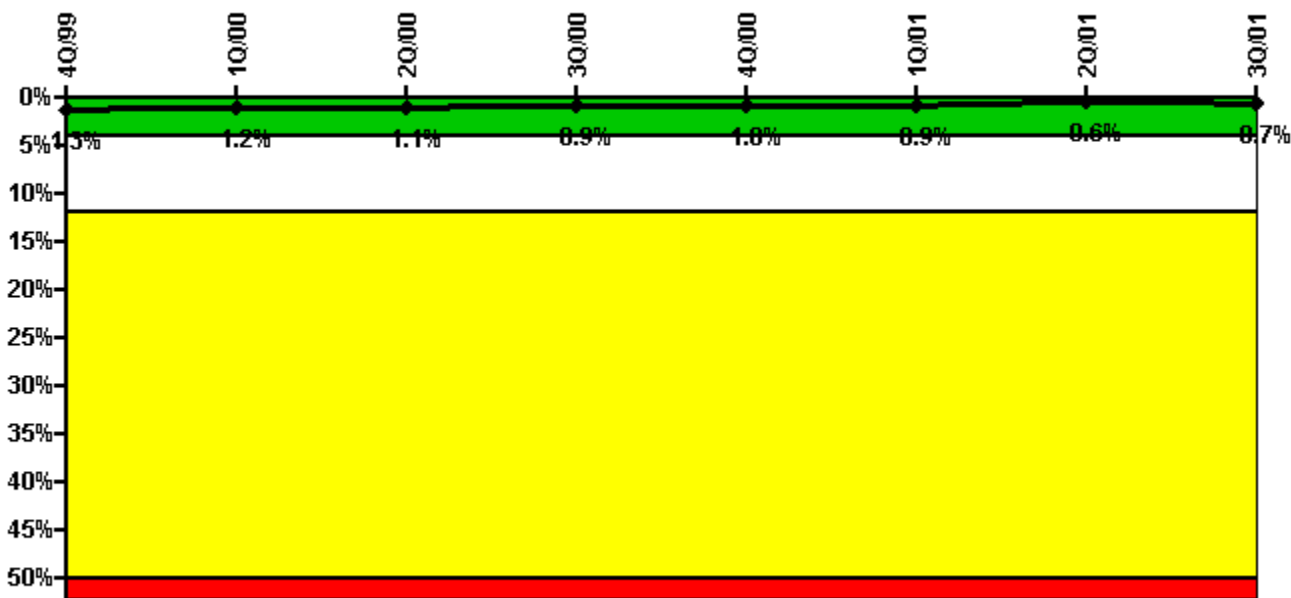
#### Notes

Safety System Unavailability, Emergency AC Power, >2EDG	4Q/99	1Q/00	2Q/00	3Q/00	4Q/00	1Q/01	2Q/01	3Q/01
<b>Train 1</b>								
Planned unavailable hours	0	3.27	0	0	0.25	0	3.00	2.12
Unplanned unavailable hours	0	0	0	0	2.80	0	0	0
Fault exposure hours	0	0	0	0	0	0	0	0
Effective Reset hours	0	0	0	0	0	0	0	0
Required hours	2209.00	2184.00	2183.00	2208.00	2209.00	2140.66	2037.07	2208.00
<b>Train 2</b>								
Planned unavailable hours	0	0	0	0	9.98	0	0	0
Unplanned unavailable hours	0	18.51	0	0	0	0	0	0
Fault exposure hours	0	0	0	0	0	0	0	0
Effective Reset hours	0	0	0	0	0	0	0	0
Required hours	2209.00	2184.00	2183.00	2208.00	2209.00	2140.66	2037.07	2208.00
<b>Train 3</b>								
Planned unavailable hours	0	0	0	7.00	0.43	0	0.66	0
Unplanned unavailable hours	0	0.07	0	0	0	0	1.22	0
Fault exposure hours	0	0	0	0	0	0	0	0
Effective Reset hours	0	0	0	0	0	0	0	0
Required hours	2209.00	2184.00	2183.00	2208.00	2209.00	2140.66	2037.07	2208.00
<b>Train 4</b>								
Planned unavailable hours	208.76	0.32	0	0	0	0	1.65	0.55
Unplanned unavailable hours	0	0.07	0	0	0	0	0	0
Fault exposure hours	0	0	0	0	0	0	0	0
Effective Reset hours	0	0	0	0	0	0	0	0
Required hours	2209.00	2184.00	2183.00	2208.00	2209.00	2140.66	2037.07	2208.00
<b>Indicator value</b>	<b>2.4%</b>	<b>2.3%</b>	<b>2.1%</b>	<b>1.8%</b>	<b>1.1%</b>	<b>1.1%</b>	<b>1.1%</b>	<b>0.6%</b>

Licensee Comments:

4Q/98: Correct typo for 4th quarter 1998. Revise the Unit 2 Train 1, Hours Required, from the incorrect value of '2209' to the correct value of '2208'

### Safety System Unavailability, High Pressure Injection System (HPCI)



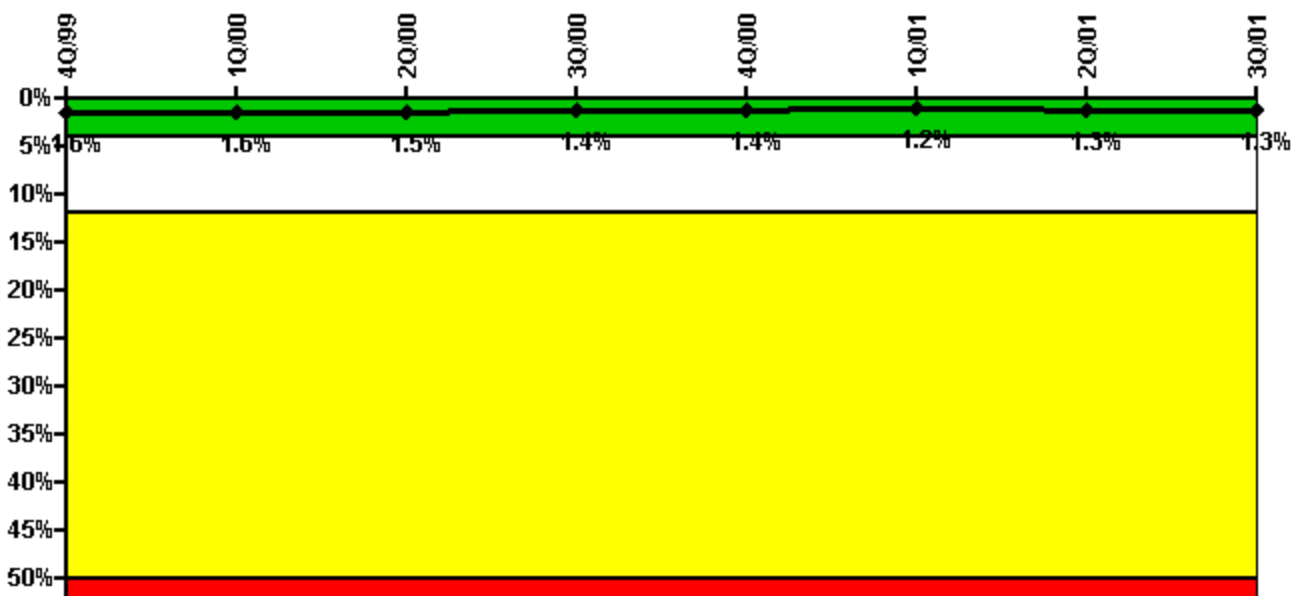
Thresholds: White > 4.0% Yellow > 12.0% Red > 50.0%

#### Notes

Safety System Unavailability, High Pressure Injection System (HPCI)	4Q/99	1Q/00	2Q/00	3Q/00	4Q/00	1Q/01	2Q/01	3Q/01
<b>Train 1</b>								
Planned unavailable hours	0	0	8.60	1.40	1.70	3.60	7.20	4.80
Unplanned unavailable hours	0	0	0	0	12.70	0	0.10	1.50
Fault exposure hours	0	0	0	0	0	0	0	0
Effective Reset hours	0	0	0	0	0	0	0	0
Required hours	2186.20	2120.60	2183.00	2208.00	2209.00	2101.90	1781.40	2208.00
Indicator value	1.3%	1.2%	1.1%	0.9%	1.0%	0.9%	0.6%	0.7%

Licensee Comments: none

### Safety System Unavailability, Heat Removal System (RCIC)



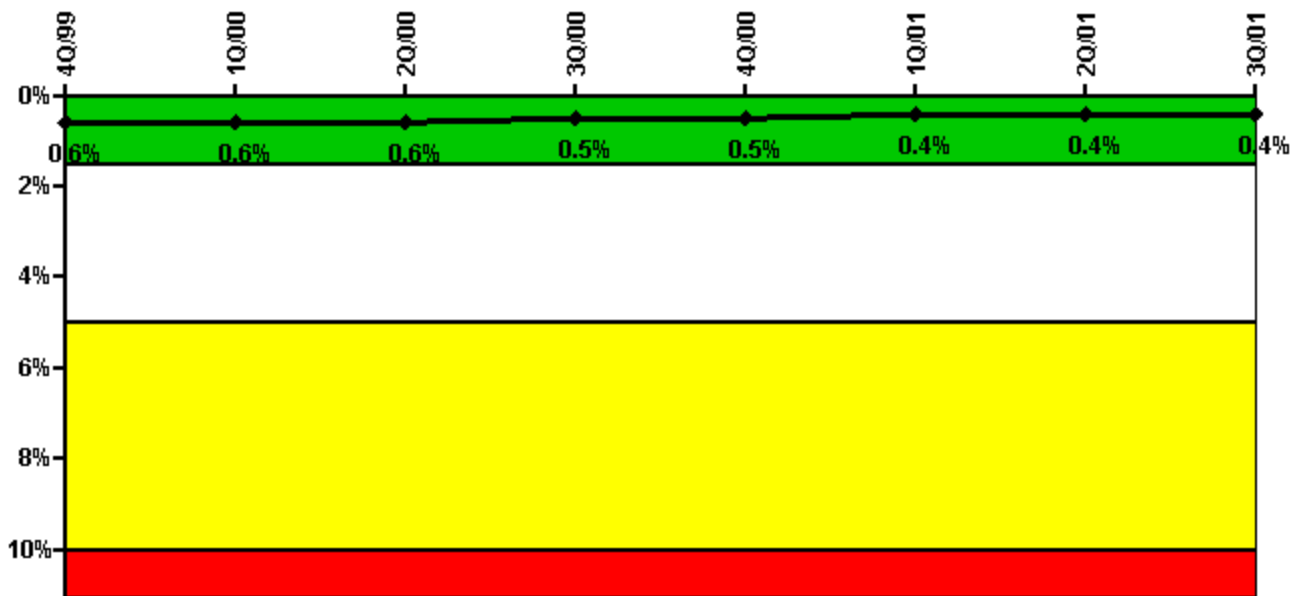
Thresholds: White > 4.0% Yellow > 12.0% Red > 50.0%

#### Notes

Safety System Unavailability, Heat Removal System (RCIC)	4Q/99	1Q/00	2Q/00	3Q/00	4Q/00	1Q/01	2Q/01	3Q/01
<b>Train 1</b>								
Planned unavailable hours	48.72	1.80	2.00	16.20	6.70	7.80	30.70	5.40
Unplanned unavailable hours	33.58	0	0	0	0	0	19.80	1.70
Fault exposure hours	0	0	0	0	0	0	0	0
Effective Reset hours	0	0	0	0	0	0	0	0
Required hours	2186.20	2120.60	2183.00	2208.00	2209.00	2101.90	1781.40	2208.00
<b>Indicator value</b>	<b>1.6%</b>	<b>1.6%</b>	<b>1.5%</b>	<b>1.4%</b>	<b>1.4%</b>	<b>1.2%</b>	<b>1.3%</b>	<b>1.3%</b>

Licensee Comments: none

### Safety System Unavailability, Residual Heat Removal System



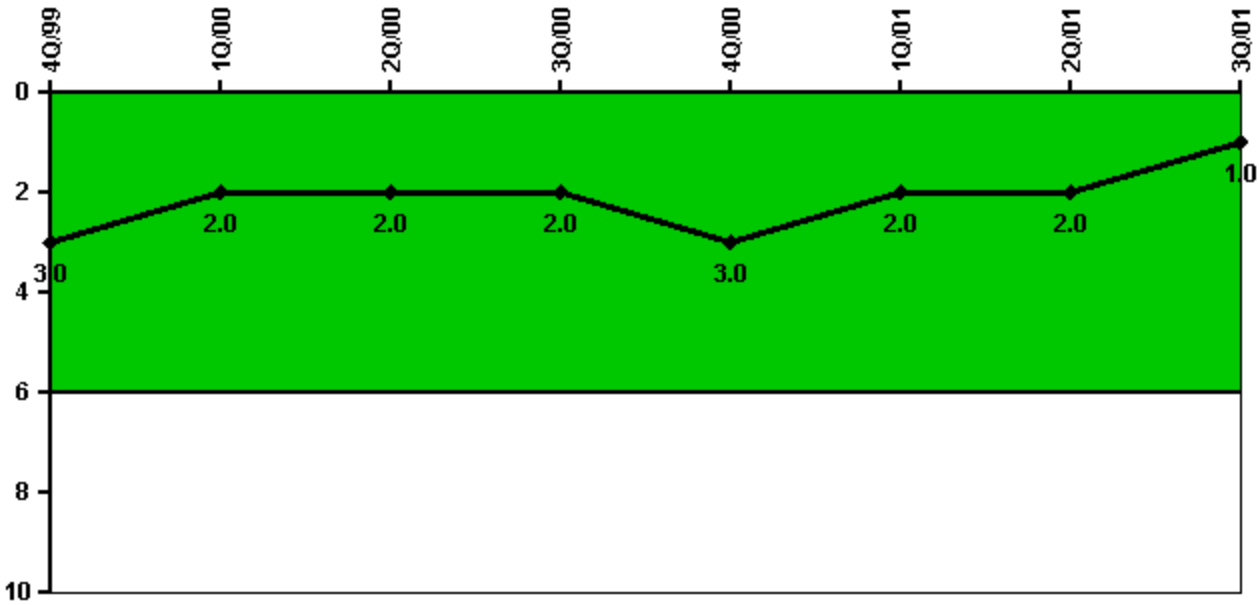
Thresholds: White > 1.5% Yellow > 5.0% Red > 10.0%

Notes

Safety System Unavailability, Residual Heat Removal System	4Q/99	1Q/00	2Q/00	3Q/00	4Q/00	1Q/01	2Q/01	3Q/01
<b>Train 1</b>								
Planned unavailable hours	0	12.27	0	0	34.62	3.80	0	0
Unplanned unavailable hours	0	0	0	0	0	0	0	0
Fault exposure hours	0	0	0	0	0	0	0	0
Effective Reset hours	0	0	0	0	0	0	0	0
Required hours	2209.00	2184.00	2183.00	2208.00	2209.00	2160.00	2183.00	2208.00
<b>Train 2</b>								
Planned unavailable hours	18.50	2.72	21.22	0	0	0	15.90	0
Unplanned unavailable hours	0	0	0	0	0	0	0	0
Fault exposure hours	0	0	0	0	0	0	0	0
Effective Reset hours	0	0	0	0	0	0	0	0
Required hours	2209.00	2184.00	2183.00	2208.00	2209.00	2160.00	2183.00	2208.00
<b>Indicator value</b>	<b>0.6%</b>	<b>0.6%</b>	<b>0.6%</b>	<b>0.5%</b>	<b>0.5%</b>	<b>0.4%</b>	<b>0.4%</b>	<b>0.4%</b>

Licensee Comments: none

### Safety System Functional Failures (BWR)



Thresholds: White > 6.0

#### Notes

Safety System Functional Failures (BWR)	4Q/99	1Q/00	2Q/00	3Q/00	4Q/00	1Q/01	2Q/01	3Q/01
Safety System Functional Failures	0	1	0	1	1	0	0	0
Indicator value	3	2	2	2	3	2	2	1

Licensee Comments: none



### Reactor Coolant System Activity



Thresholds: White > 50.0 Yellow > 100.0

#### Notes

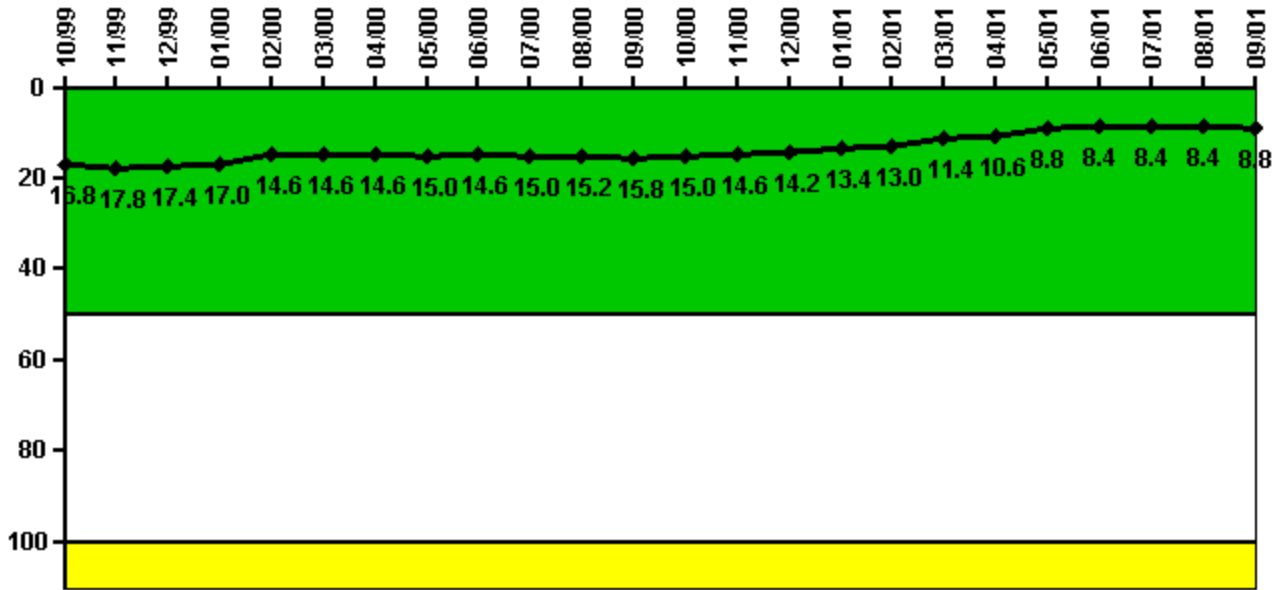
Reactor Coolant System Activity	10/99	11/99	12/99	1/00	2/00	3/00	4/00	5/00	6/00	7/00	8/00	9/00
Maximum activity	0.000153	0.000284	0.000133	0.000130	0.000139	0.000146	0.000146	0.000147	0.000137	0.000134	0.000143	0.000157
Technical specification limit	0.2	0.2	0.2	0.2	0.2	0.2	0.2	0.2	0.2	0.2	0.2	0.2
Indicator value	0.1	0.1	0.1	0.1	0.1	0.1	0.1	0.1	0.1	0.1	0.1	0.1

Reactor Coolant System Activity	10/00	11/00	12/00	1/01	2/01	3/01	4/01	5/01	6/01	7/01	8/01	9/01
Maximum activity	0.000146	0.000162	0.000157	0.000238	0.000192	0.000248	N/A	0.000050	0.000029	0.000039	0.000028	0.000021
Technical specification limit	0.2	0.2	0.2	0.2	0.2	0.2	0.2	0.2	0.2	0.2	0.2	0.2
Indicator value	0.1	0.1	0.1	0.1	0.1	0.1	N/A	0	0	0	0	0

Licensee Comments: none

### Reactor Coolant System Leakage



Thresholds: White > 50.0 Yellow > 100.0

#### Notes

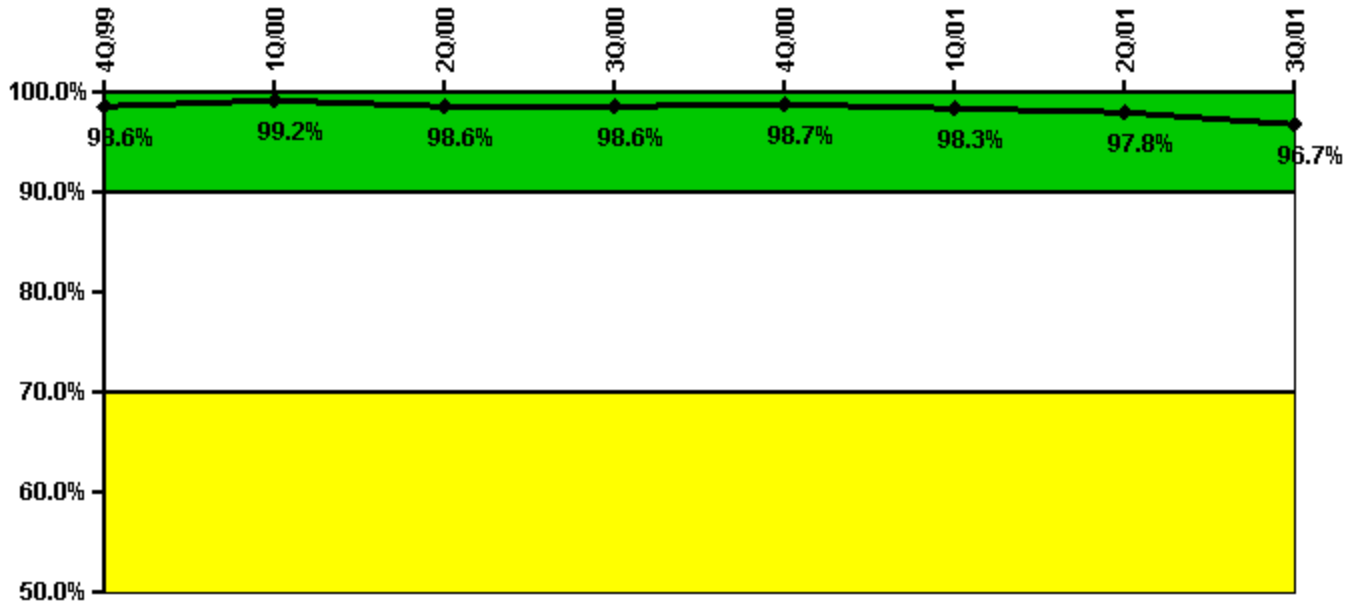
Reactor Coolant System Leakage	10/99	11/99	12/99	1/00	2/00	3/00	4/00	5/00	6/00	7/00	8/00	9/00
Maximum leakage	4.190	4.440	4.340	4.240	3.640	3.640	3.640	3.740	3.640	3.740	3.790	3.940
Technical specification limit	25.0	25.0	25.0	25.0	25.0	25.0	25.0	25.0	25.0	25.0	25.0	25.0
Indicator value	16.8	17.8	17.4	17.0	14.6	14.6	14.6	15.0	14.6	15.0	15.2	15.8

Reactor Coolant System Leakage	10/00	11/00	12/00	1/01	2/01	3/01	4/01	5/01	6/01	7/01	8/01	9/01
Maximum leakage	3.740	3.640	3.540	3.340	3.240	2.840	2.640	2.200	2.100	2.100	2.100	2.200
Technical specification limit	25.0	25.0	25.0	25.0	25.0	25.0	25.0	25.0	25.0	25.0	25.0	25.0
Indicator value	15.0	14.6	14.2	13.4	13.0	11.4	10.6	8.8	8.4	8.4	8.4	8.8

Licensee Comments: none

### Drill/Exercise Performance



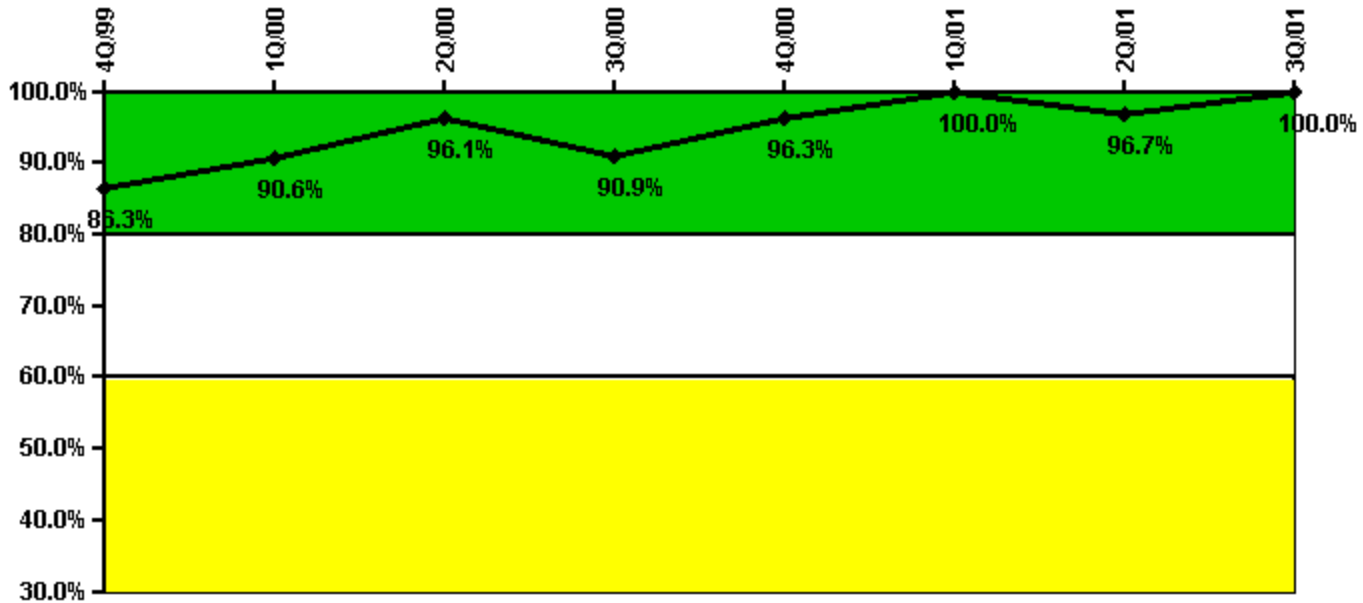
Thresholds: White < 90.0% Yellow < 70.0%

#### Notes

Drill/Exercise Performance	4Q/99	1Q/00	2Q/00	3Q/00	4Q/00	1Q/01	2Q/01	3Q/01
Successful opportunities	11.0	67.0	9.0	0	18.0	32.0	3.0	8.0
Total opportunities	11.0	67.0	10.0	0	18.0	33.0	4.0	10.0
Indicator value	98.6%	99.2%	98.6%	98.6%	98.7%	98.3%	97.8%	96.7%

Licensee Comments: none

### ERO Drill Participation



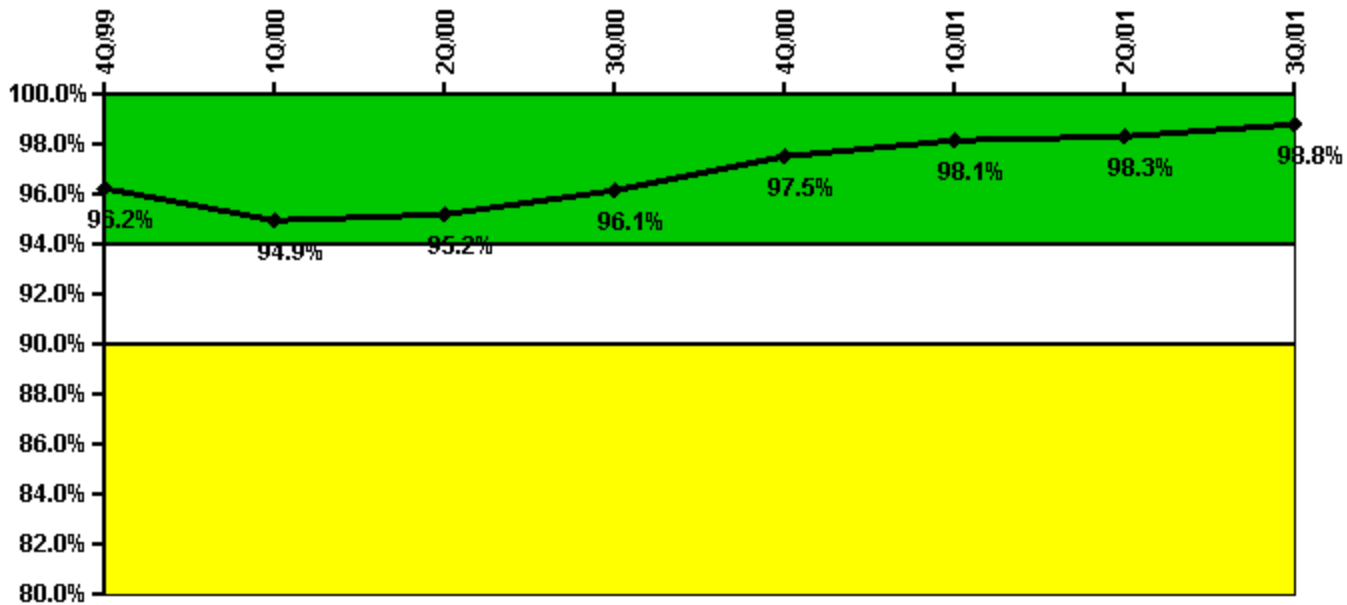
Thresholds: White < 80.0% Yellow < 60.0%

#### Notes

ERO Drill Participation	4Q/99	1Q/00	2Q/00	3Q/00	4Q/00	1Q/01	2Q/01	3Q/01
Participating Key personnel	44.0	48.0	49.0	50.0	52.0	59.0	58.0	43.0
Total Key personnel	51.0	53.0	51.0	55.0	54.0	59.0	60.0	43.0
Indicator value	86.3%	90.6%	96.1%	90.9%	96.3%	100.0%	96.7%	100.0%

Licensee Comments: none

### Alert & Notification System



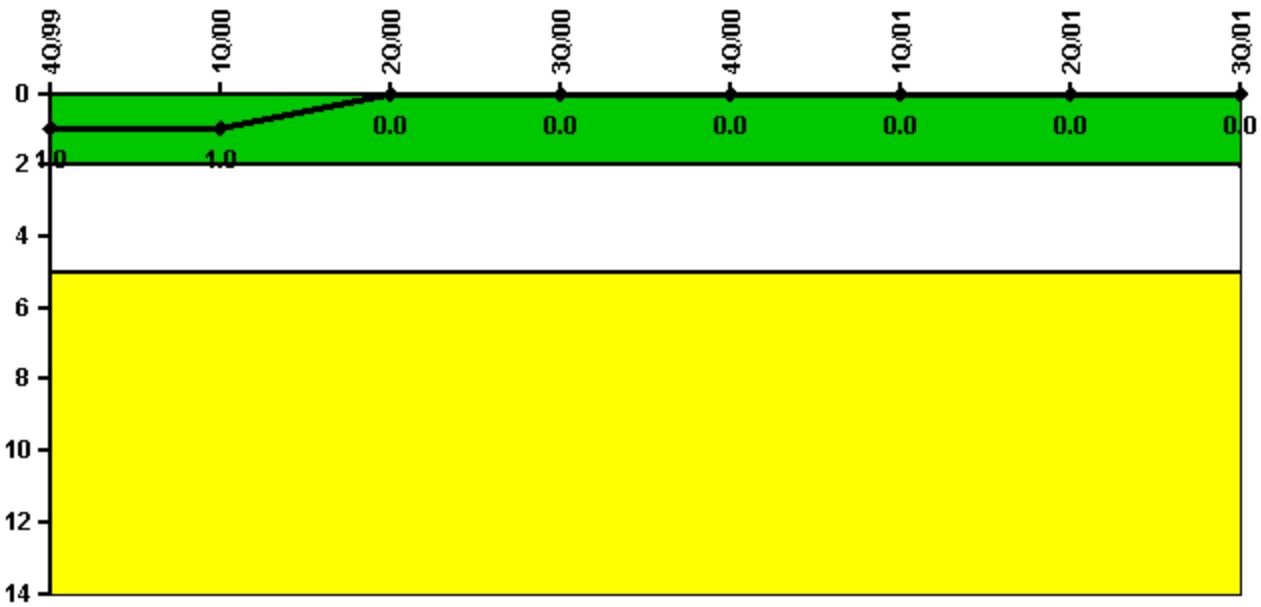
Thresholds: White < 94.0% Yellow < 90.0%

#### Notes

Alert & Notification System	4Q/99	1Q/00	2Q/00	3Q/00	4Q/00	1Q/01	2Q/01	3Q/01
Successful siren-tests	467	459	954	2561	4391	2125	2118	2124
Total sirens-tests	495	495	990	2640	4455	2145	2145	2145
Indicator value	96.2%	94.9%	95.2%	96.1%	97.5%	98.1%	98.3%	98.8%

Licensee Comments: none

### Occupational Exposure Control Effectiveness



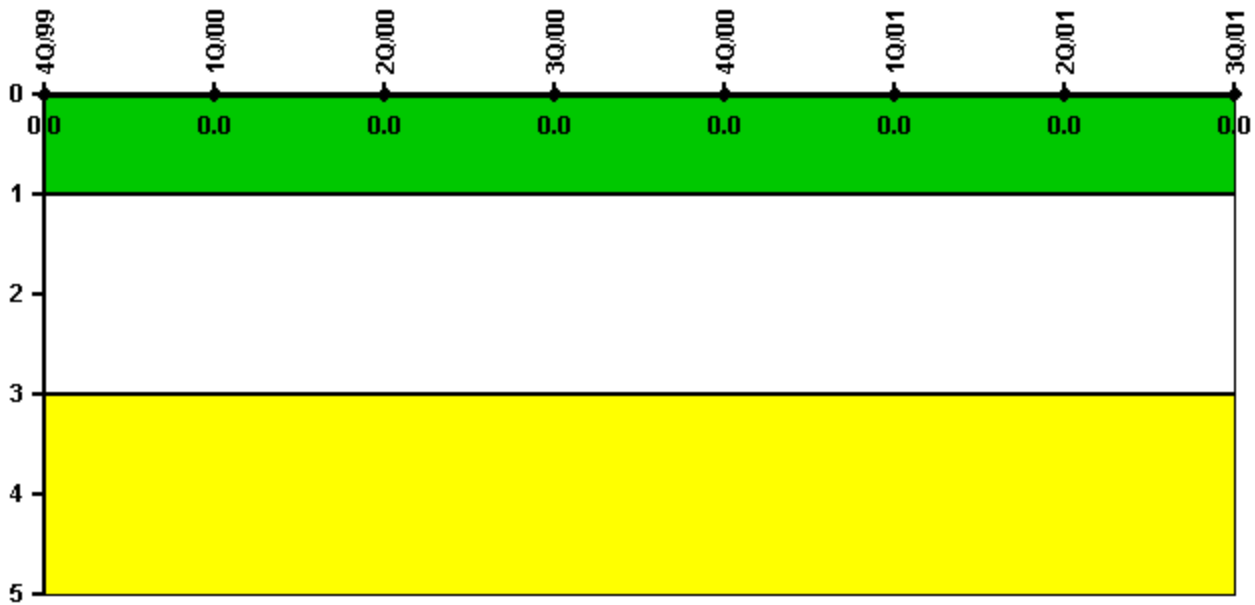
Thresholds: White > 2.0 Yellow > 5.0

#### Notes

Occupational Exposure Control Effectiveness	4Q/99	1Q/00	2Q/00	3Q/00	4Q/00	1Q/01	2Q/01	3Q/01
High radiation area occurrences	0	0	0	0	0	0	0	0
Very high radiation area occurrences	0	0	0	0	0	0	0	0
Unintended exposure occurrences	0	0	0	0	0	0	0	0
<b>Indicator value</b>	<b>1</b>	<b>1</b>	<b>0</b>	<b>0</b>	<b>0</b>	<b>0</b>	<b>0</b>	<b>0</b>

Licensee Comments: none

### RETS/ODCM Radiological Effluent



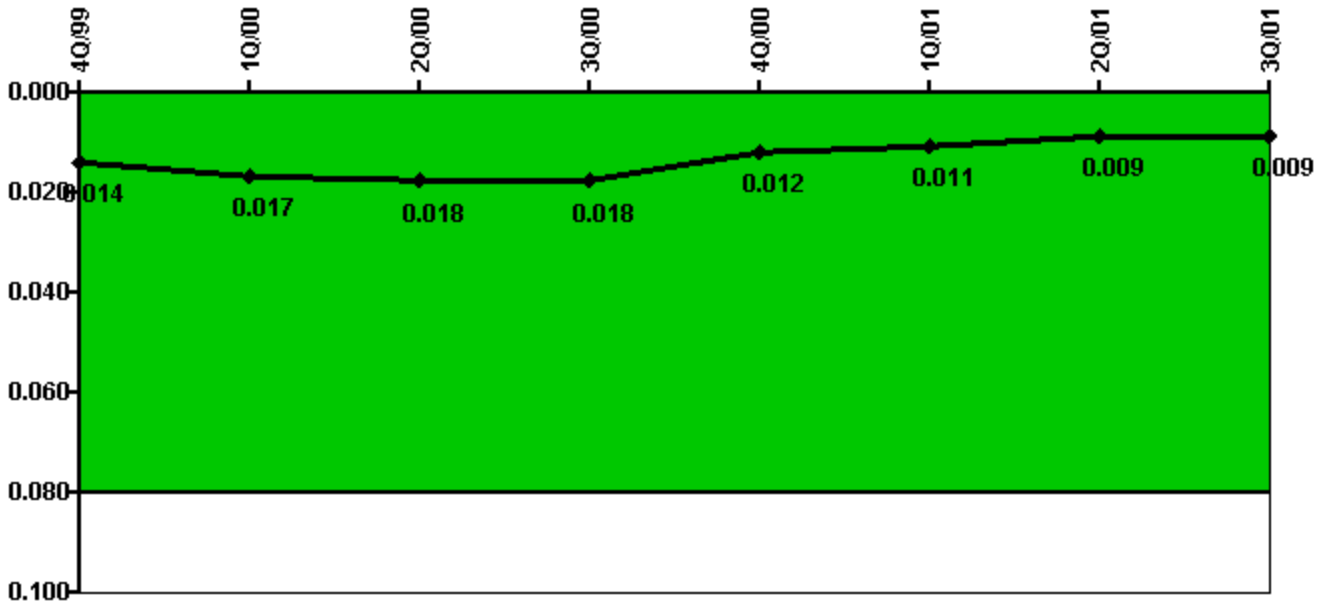
Thresholds: White > 1.0 Yellow > 3.0

#### Notes

RETS/ODCM Radiological Effluent	4Q/99	1Q/00	2Q/00	3Q/00	4Q/00	1Q/01	2Q/01	3Q/01
RETS/ODCM occurrences	0	0	0	0	0	0	0	0
Indicator value	0	0	0	0	0	0	0	0

Licensee Comments: none

### Protected Area Security Performance Index



Thresholds: White > 0.080

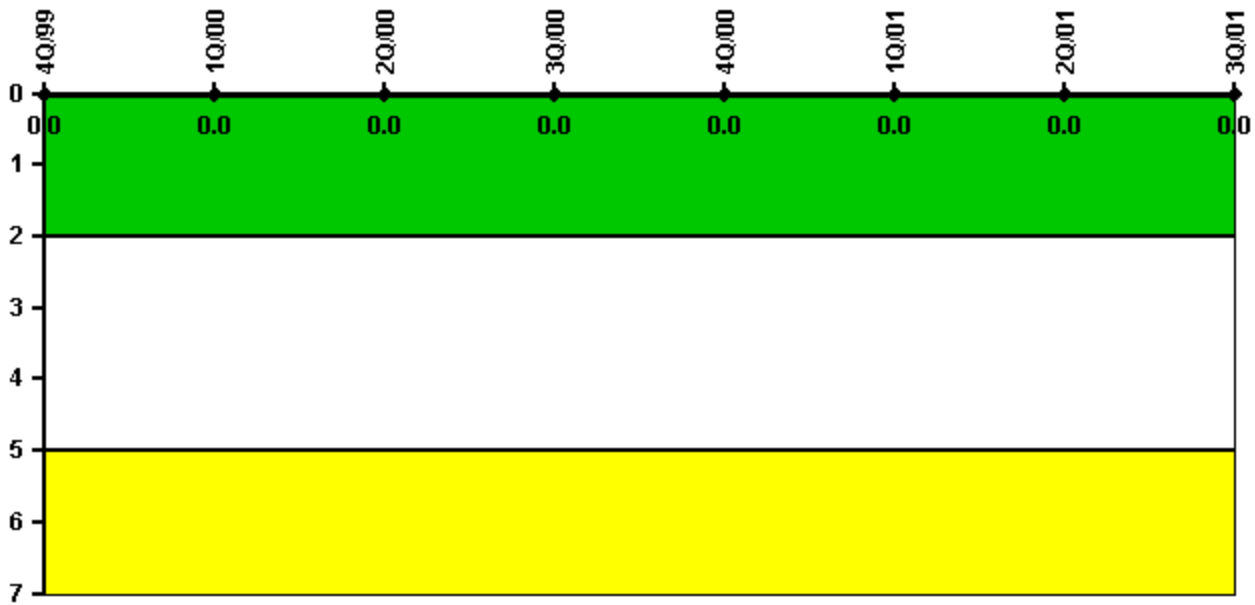
#### Notes

Protected Area Security Performance Index	4Q/99	1Q/00	2Q/00	3Q/00	4Q/00	1Q/01	2Q/01	3Q/01
IDS compensatory hours	357.70	143.40	63.20	29.50	81.70	85.50	3.70	75.20
CCTV compensatory hours	0	17.6	36.4	16.1	7.9	45.5	5.6	1.6
IDS normalization factor	2.35	2.35	2.35	2.35	2.35	2.35	2.35	2.35
CCTV normalization factor	1.2	1.2	1.2	1.2	1.2	1.2	1.2	1.2
<b>Index Value</b>	<b>0.014</b>	<b>0.017</b>	<b>0.018</b>	<b>0.018</b>	<b>0.012</b>	<b>0.011</b>	<b>0.009</b>	<b>0.009</b>

Licensee Comments: none



### Personnel Screening Program



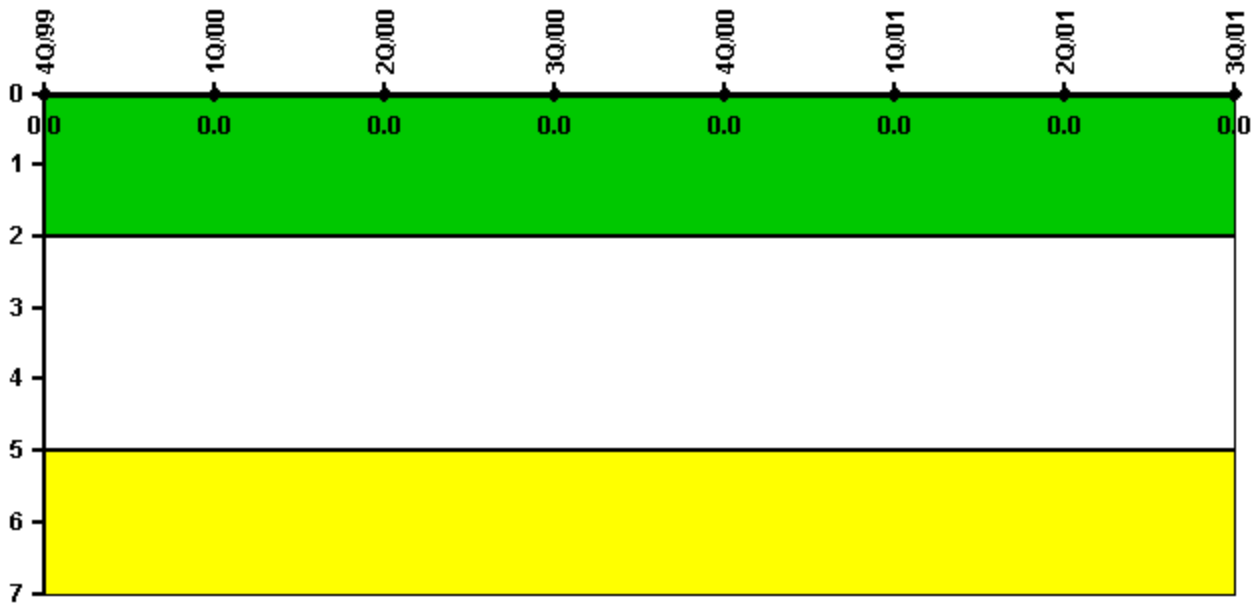
Thresholds: White > 2.0 Yellow > 5.0

#### Notes

Personnel Screening Program	4Q/99	1Q/00	2Q/00	3Q/00	4Q/00	1Q/01	2Q/01	3Q/01
Program failures	0	0	0	0	0	0	0	0
Indicator value	0	0	0	0	0	0	0	0

Licensee Comments: none

### FFD/Personnel Reliability



Thresholds: White > 2.0 Yellow > 5.0

#### Notes

FFD/Personnel Reliability	4Q/99	1Q/00	2Q/00	3Q/00	4Q/00	1Q/01	2Q/01	3Q/01
Program Failures	0	0	0	0	0	0	0	0
Indicator value	0	0	0	0	0	0	0	0

Licensee Comments: none

▲ [PI Summary](#) | [Inspection Findings Summary](#) | [Action Matrix Summary](#) | [Reactor Oversight Process](#)

Last Modified: March 26, 2002