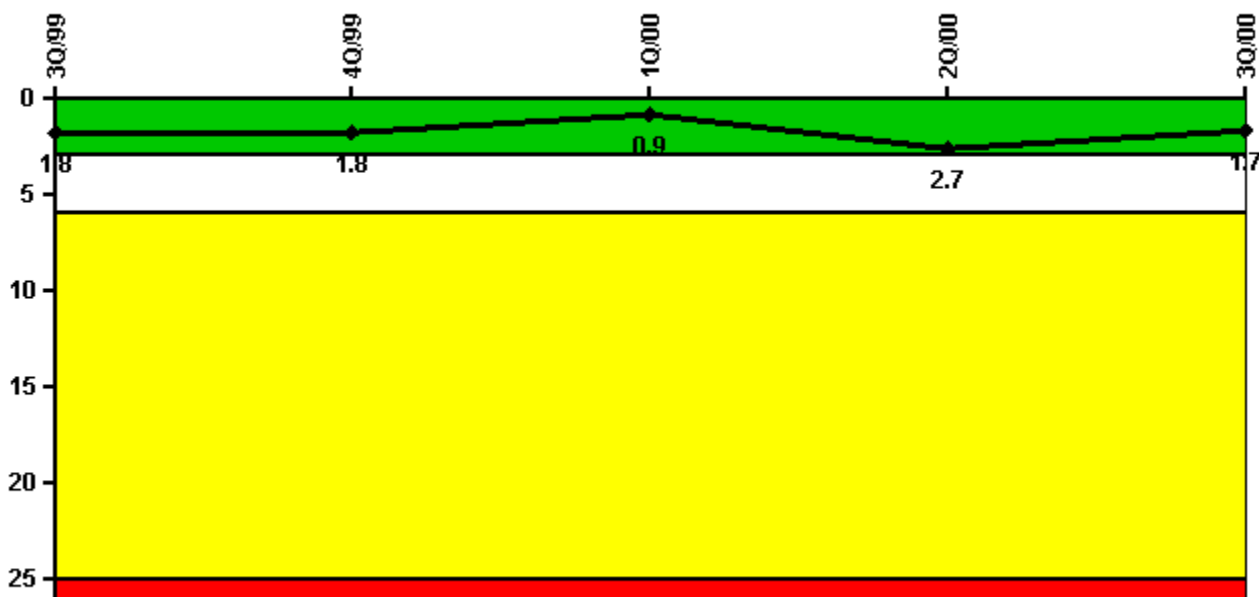


Indian Point 3

3Q/2000 Performance Indicators

Licensee's General Comments: none

Unplanned Scrams per 7000 Critical Hrs



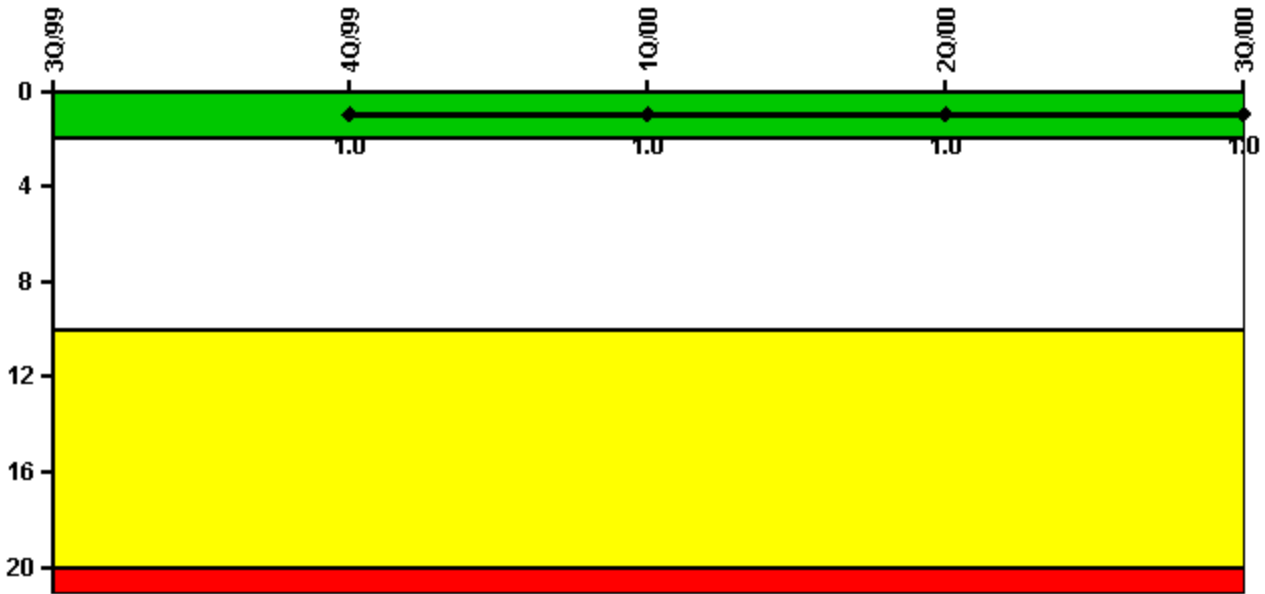
Thresholds: White > 3.0 Yellow > 6.0 Red > 25.0

Notes

Unplanned Scrams per 7000 Critical Hrs	3Q/99	4Q/99	1Q/00	2Q/00	3Q/00
Unplanned scrams	1.0	0	0	2.0	0
Critical hours	1679.8	1746.1	2184.0	2149.5	2208.0
Indicator value	1.8	1.8	0.9	2.7	1.7

Licensee Comments: none

Scrams with Loss of Normal Heat Removal



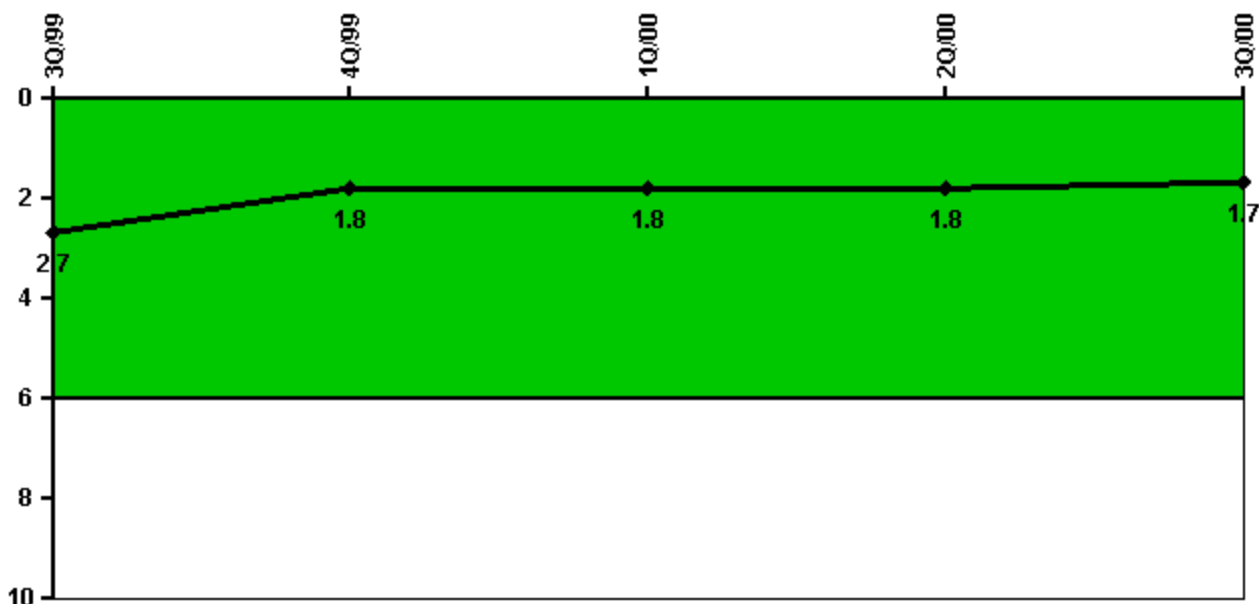
Thresholds: White > 2.0 Yellow > 10.0 Red > 20.0

Notes

Scrams with Loss of Normal Heat Removal	3Q/99	4Q/99	1Q/00	2Q/00	3Q/00
Scrams	1.0	0	0	0	0
Indicator value		1.0	1.0	1.0	1.0

Licensee Comments: none

Unplanned Power Changes per 7000 Critical Hrs



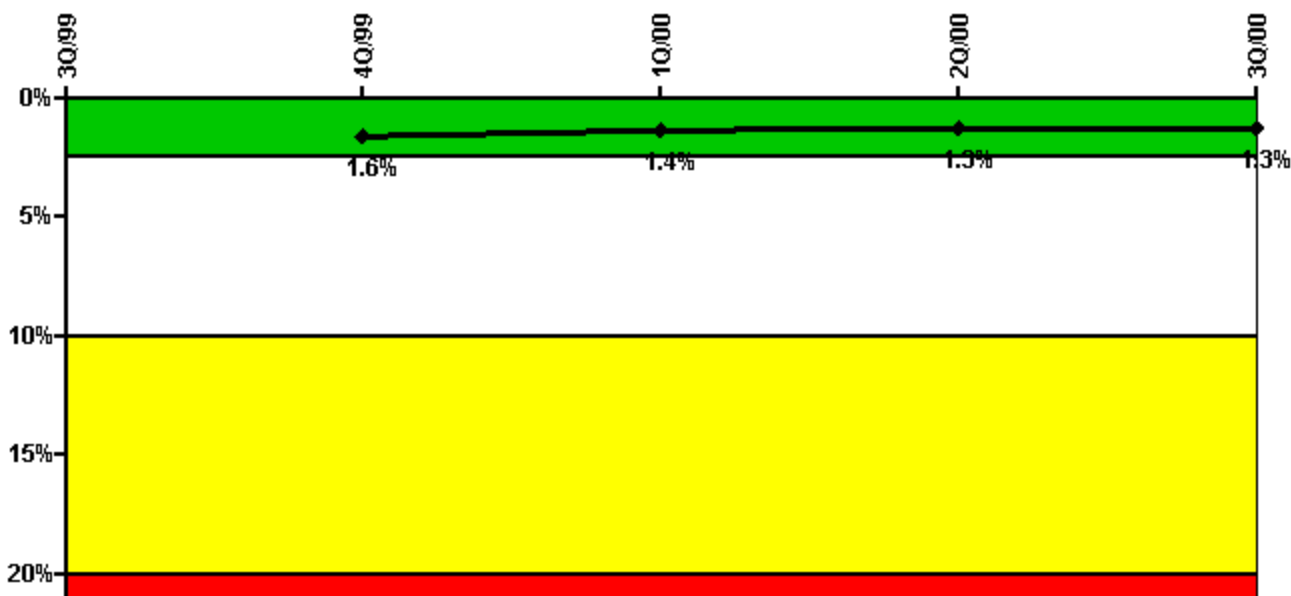
Thresholds: White > 6.0

Notes

Unplanned Power Changes per 7000 Critical Hrs	3Q/99	4Q/99	1Q/00	2Q/00	3Q/00
Unplanned power changes	0	1.0	0	1.0	0
Critical hours	1679.8	1746.1	2184.0	2149.5	2208.0
Indicator value	2.7	1.8	1.8	1.8	1.7

Licensee Comments: none

Safety System Unavailability, Emergency AC Power, >2EDG



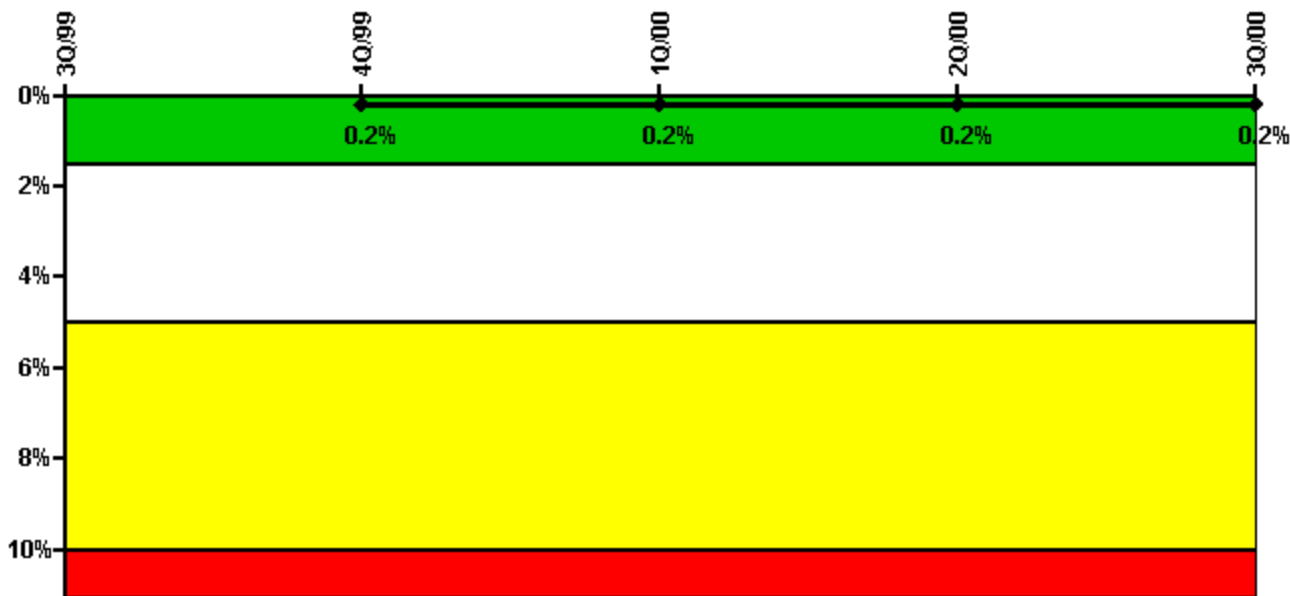
Thresholds: White > 2.5% Yellow > 10.0% Red > 20.0%

Notes

Safety System Unavailability, Emergency AC Power, >2EDG	3Q/99	4Q/99	1Q/00	2Q/00	3Q/00
Train 1					
Planned unavailable hours	42.60	43.79	12.33	1.77	0
Unplanned unavailable hours	0	0	0	0	0
Fault exposure hours	0	0	0	0	0
Effective Reset hours	0	0	0	0	0
Required hours	2208.00	2209.00	2184.00	2183.00	2208.00
Train 2					
Planned unavailable hours	30.42	10.90	51.74	0	0
Unplanned unavailable hours	0	0	0	0	0
Fault exposure hours	0	0	0	0	0
Effective Reset hours	0	0	0	0	0
Required hours	2208.00	2209.00	2184.00	2183.00	2208.00
Train 3					
Planned unavailable hours	22.83	44.98	34.97	10.88	0
Unplanned unavailable hours	0	0	2.97	0	14.46
Fault exposure hours	0	0	0	0	4.00
Effective Reset hours	0	0	0	0	0
Required hours	2208.00	2209.00	2184.00	2183.00	2208.00
Indicator value		1.6%	1.4%	1.3%	1.3%

Licensee Comments: none

Safety System Unavailability, High Pressure Injection System (HPSI)



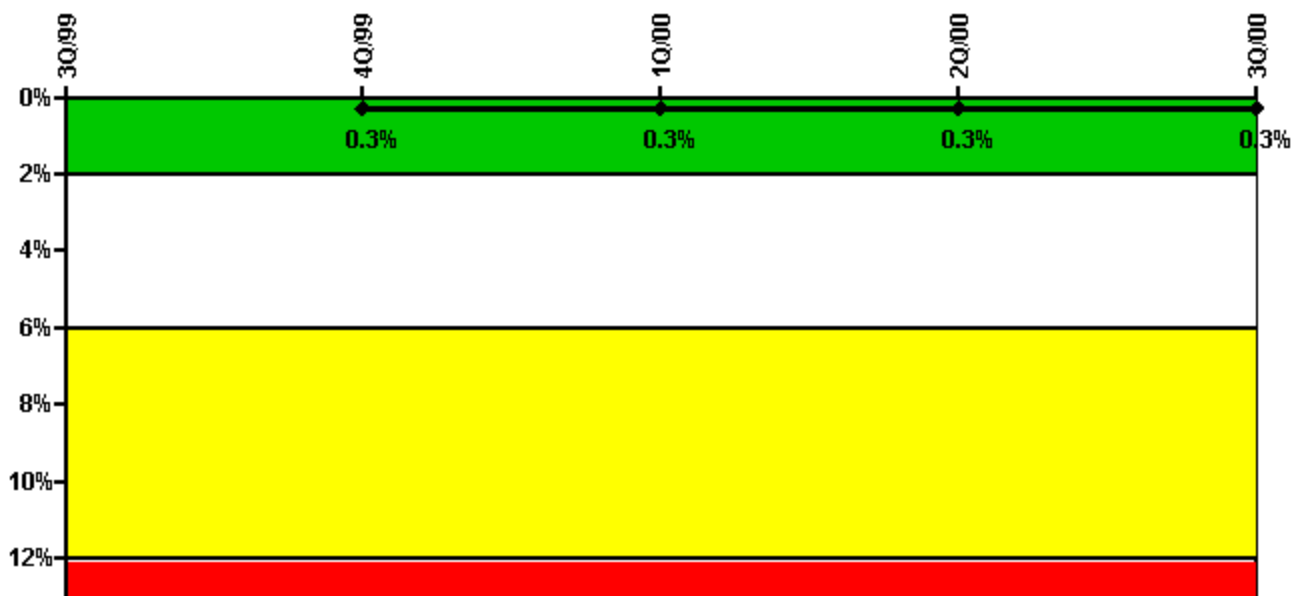
Thresholds: White > 1.5% Yellow > 5.0% Red > 10.0%

Notes

Safety System Unavailability, High Pressure Injection System (HPSI)	3Q/99	4Q/99	1Q/00	2Q/00	3Q/00
Train 1					
Planned unavailable hours	0	8.42	14.00	0	0
Unplanned unavailable hours	0	0	0	0	0
Fault exposure hours	0	0	0	0	0
Effective Reset hours	0	0	0	0	0
Required hours	1679.84	1746.12	2184.00	2149.50	2208.00
Train 2					
Planned unavailable hours	0	8.18	0.43	0	0
Unplanned unavailable hours	0	0	7.02	0	0
Fault exposure hours	0	0	0	0	0
Effective Reset hours	0	0	0	0	0
Required hours	1679.84	1746.12	2184.00	2149.50	2208.00
Train 3					
Planned unavailable hours	0	0	0	0	6.95
Unplanned unavailable hours	0	0	0	0	0
Fault exposure hours	0	0	0	0	0
Effective Reset hours	0	0	0	0	0
Required hours	1679.84	1746.12	2184.00	2149.50	2208.00
Indicator value		0.2%	0.2%	0.2%	0.2%

Licensee Comments: none

Safety System Unavailability, Heat Removal System (AFW)



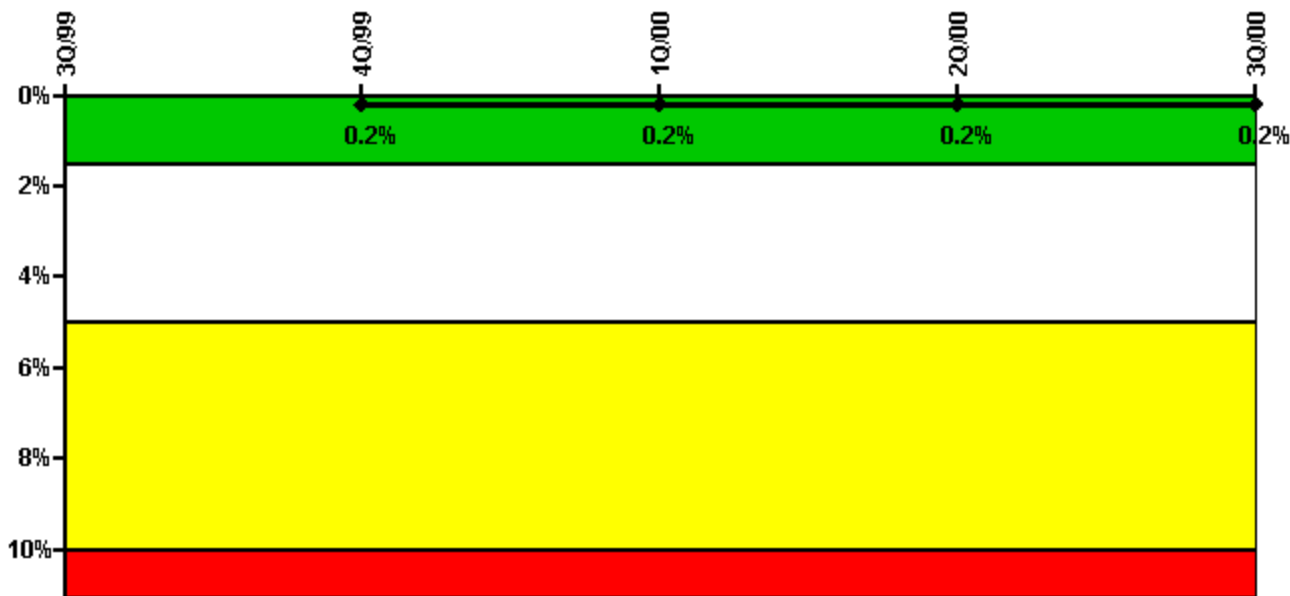
Thresholds: White > 2.0% Yellow > 6.0% Red > 12.0%

Notes

Safety System Unavailability, Heat Removal System (AFW)	3Q/99	4Q/99	1Q/00	2Q/00	3Q/00
Train 1					
Planned unavailable hours	0.40	0	0	0	7.57
Unplanned unavailable hours	44.00	0	0	0	0
Fault exposure hours	0	0	0	0	0
Effective Reset hours	0	0	0	0	0
Required hours	1679.84	1746.12	2184.00	2149.50	2208.00
Train 2					
Planned unavailable hours	0	0.43	0	8.58	9.12
Unplanned unavailable hours	0	0	0	0	0
Fault exposure hours	0	0	0	0	0
Effective Reset hours	0	0	0	0	0
Required hours	1679.84	1746.12	2184.00	2149.50	2208.00
Train 3					
Planned unavailable hours	0	0	5.66	1.38	14.09
Unplanned unavailable hours	0	0	0	0	0
Fault exposure hours	0	0	0	0	0
Effective Reset hours	0	0	0	0	0
Required hours	1679.84	1746.12	2184.00	2149.50	2208.00
Indicator value		0.3%	0.3%	0.3%	0.3%

Licensee Comments: none

Safety System Unavailability, Residual Heat Removal System



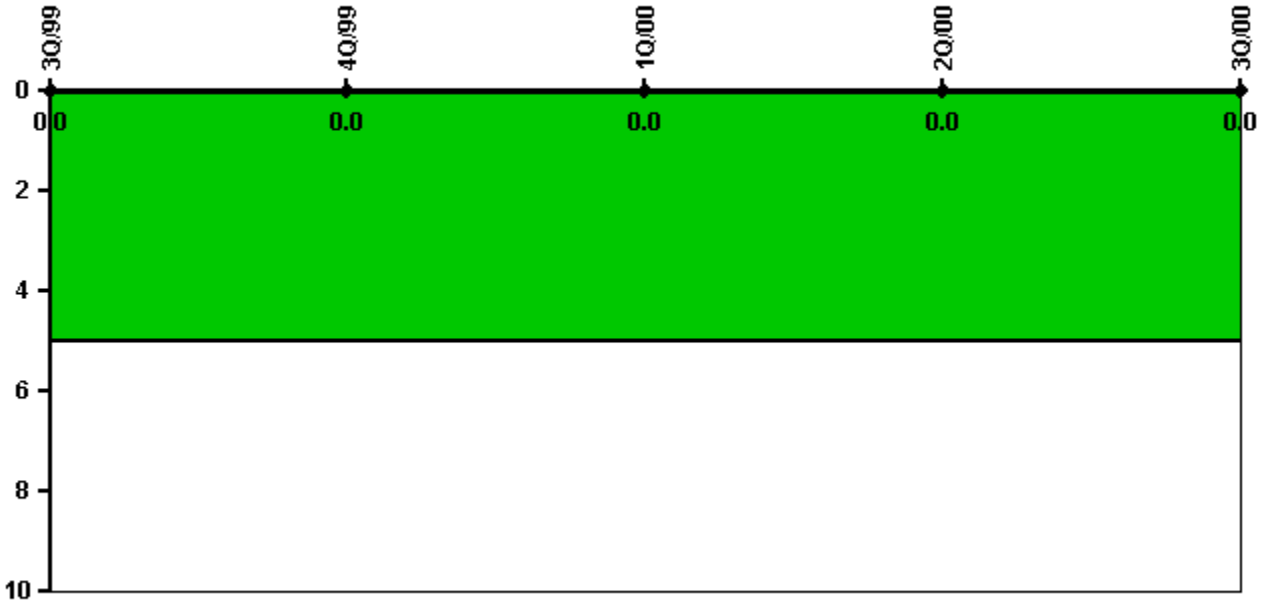
Thresholds: White > 1.5% Yellow > 5.0% Red > 10.0%

Notes

Safety System Unavailability, Residual Heat Removal System	3Q/99	4Q/99	1Q/00	2Q/00	3Q/00
Train 1					
Planned unavailable hours	1.92	0	1.42	9.62	0
Unplanned unavailable hours	0	0	0	0	0
Fault exposure hours	0	0	0	0	0
Effective Reset hours	0	0	0	0	0
Required hours	2208.00	2209.00	2184.00	2183.00	2208.00
Train 2					
Planned unavailable hours	2.25	0	0	0	5.40
Unplanned unavailable hours	0	0	0	0	0
Fault exposure hours	0	0	0	0	0
Effective Reset hours	0	0	0	0	0
Required hours	2208.00	2209.00	2184.00	2183.00	2208.00
Train 3					
Planned unavailable hours	0	0	0	0	0
Unplanned unavailable hours	0	0	0	0	0
Fault exposure hours	0	0	0	0	0
Effective Reset hours	0	0	0	0	0
Required hours	2208.00	2209.00	2184.00	2183.00	2208.00
Train 4					
Planned unavailable hours	0	0	0	0	0
Unplanned unavailable hours	0	0	0	0	0
Fault exposure hours	0	0	0	0	0
Effective Reset hours	0	0	0	0	0
Required hours	2208.00	2209.00	2184.00	2183.00	2208.00
Indicator value		0.2%	0.2%	0.2%	0.2%

Licensee Comments: none

Safety System Functional Failures (PWR)



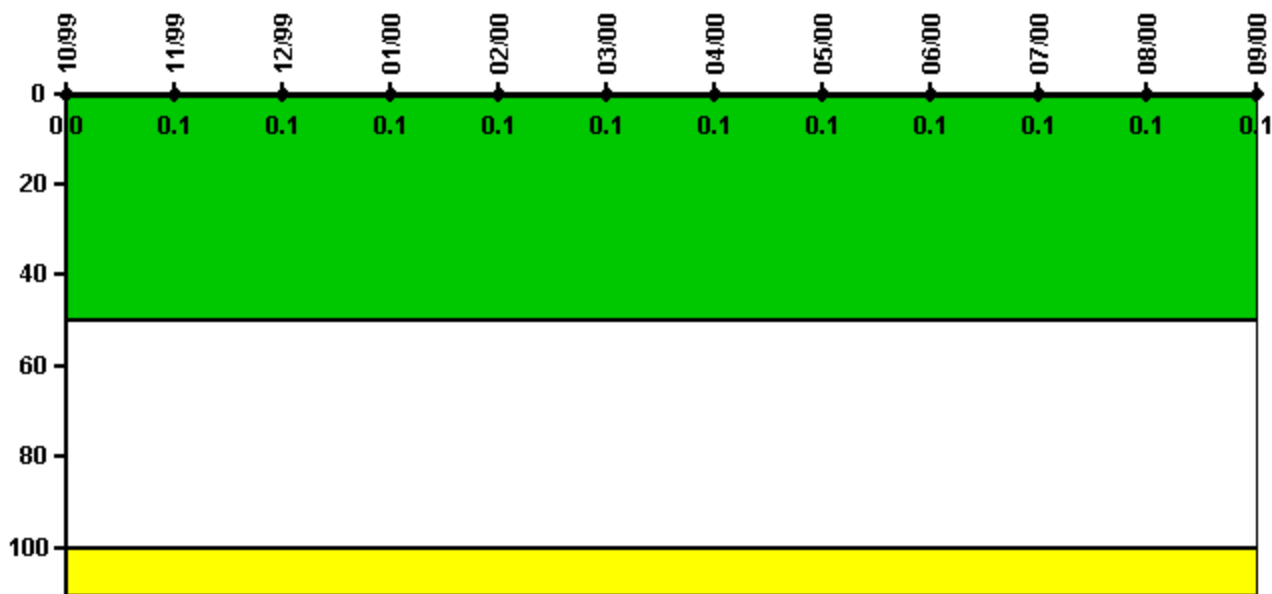
Thresholds: White > 5.0

Notes

Safety System Functional Failures (PWR)	3Q/99	4Q/99	1Q/00	2Q/00	3Q/00
Safety System Functional Failures	0	0	0	0	0
Indicator value	0	0	0	0	0

Licensee Comments: none

Reactor Coolant System Activity



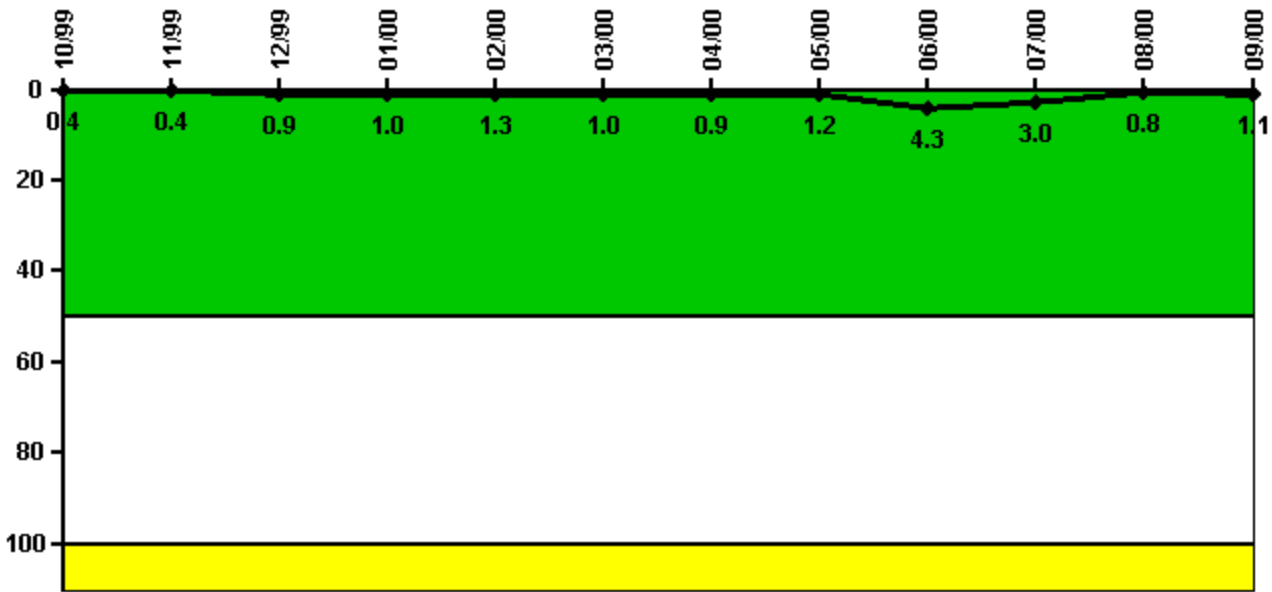
Thresholds: White > 50.0 Yellow > 100.0

Notes

Reactor Coolant System Activity	10/99	11/99	12/99	1/00	2/00	3/00	4/00	5/00	6/00	7/00	8/00	9/00
Maximum activity	0.000464	0.000613	0.000653	0.000763	0.000724	0.000764	0.000760	0.000927	0.001310	0.001260	0.001260	0.001420
Technical specification limit	1.0	1.0	1.0	1.0	1.0	1.0	1.0	1.0	1.0	1.0	1.0	1.0
Indicator value	0	0.1	0.1	0.1	0.1	0.1	0.1	0.1	0.1	0.1	0.1	0.1

Licensee Comments: none

Reactor Coolant System Leakage



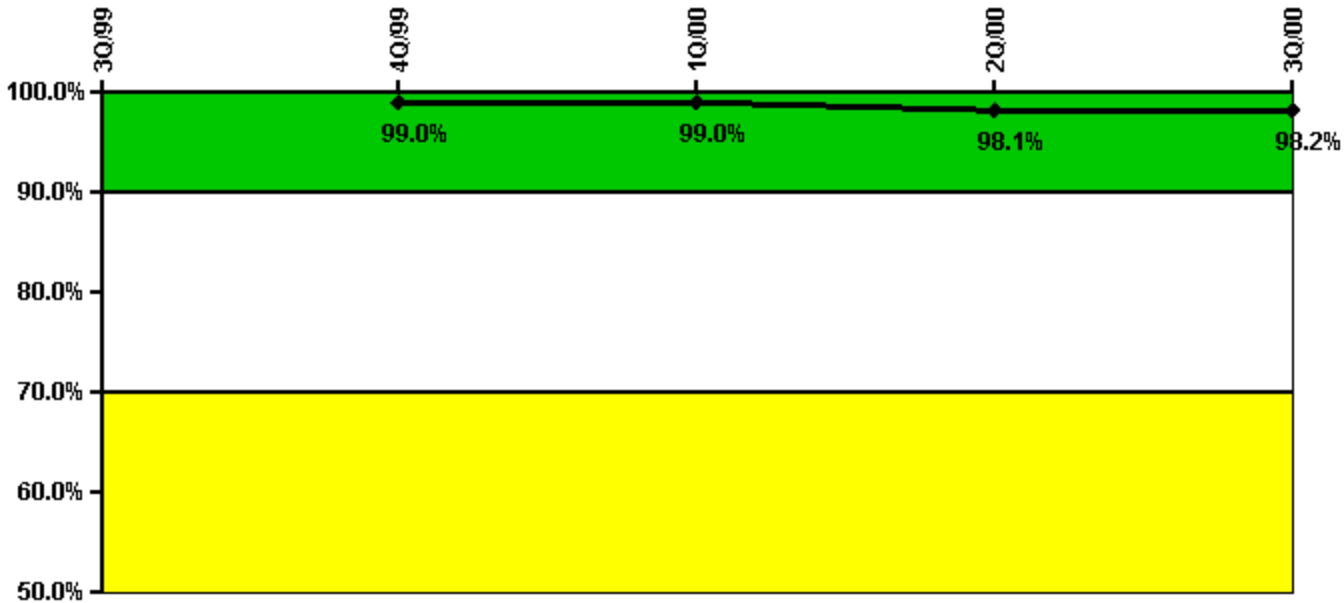
Thresholds: White > 50.0 Yellow > 100.0

Notes

Reactor Coolant System Leakage	10/99	11/99	12/99	1/00	2/00	3/00	4/00	5/00	6/00	7/00	8/00	9/00
Maximum leakage	0.040	0.040	0.085	0.100	0.130	0.100	0.090	0.120	0.430	0.300	0.080	0.110
Technical specification limit	10.0	10.0	10.0	10.0	10.0	10.0	10.0	10.0	10.0	10.0	10.0	10.0
Indicator value	0.4	0.4	0.9	1.0	1.3	1.0	0.9	1.2	4.3	3.0	0.8	1.1

Licensee Comments: none

Drill/Exercise Performance



Thresholds: White < 90.0% Yellow < 70.0%

Notes

Drill/Exercise Performance	3Q/99	4Q/99	1Q/00	2Q/00	3Q/00
Successful opportunities	16.0	20.0	10.0	15.0	10.0
Total opportunities	16.0	20.0	10.0	16.0	11.0
Indicator value		99.0%	99.0%	98.1%	98.2%

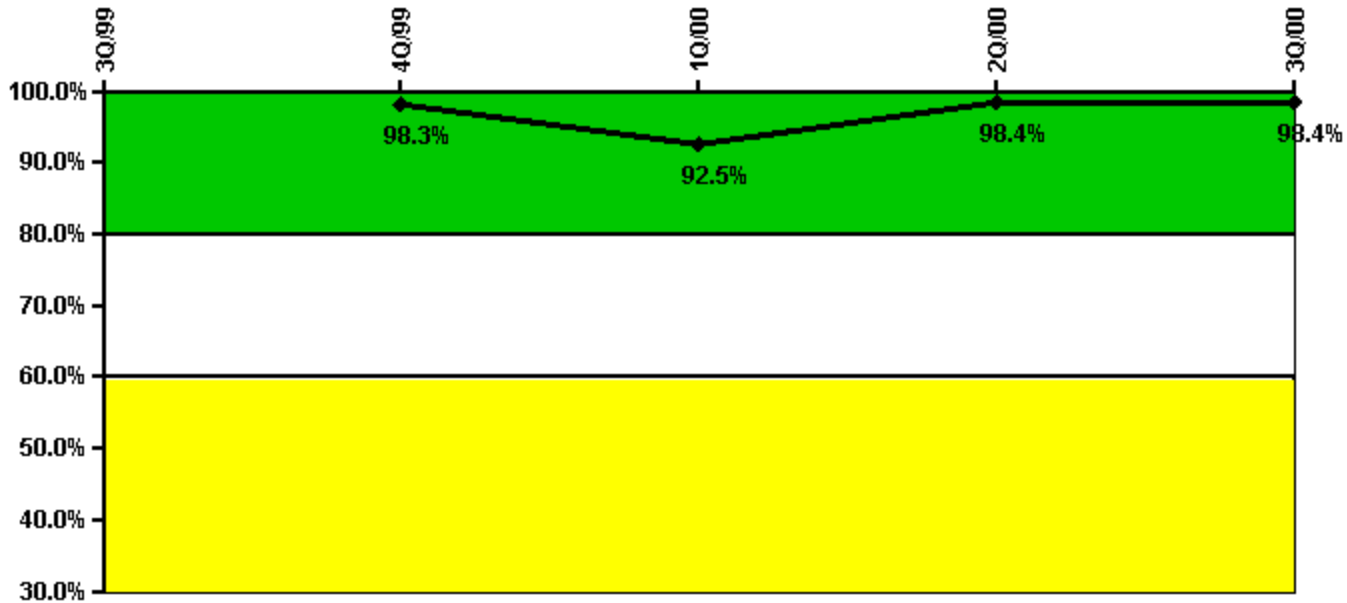
Licensee Comments:

3Q/00: LER-2000-010 dated November 13, 2000, reported that the Containment Spray System (CSS) Spray Additive Tank (SAT) had been isolated on July 21, 2000, as a result of preventive maintenance. The isolation of the SAT prevented the CSS from performing one of its safety functions. Because the Technical Specifications does not provide any allowed outage time (AOT) for the SAT, the condition required initiation of plant shutdown and shutdown within 4 hours if not corrected. In accordance with the Emergency Plan Action Level EAL 7.1.1, an NUE is required to be declared if the plant is not brought to the required operating mode within the Technical Specification Limiting Condition for Operation (LCO) Action Statement time. Operators did not identify the condition at the time and therefore did not declare an NUE when the event occurred on July 21, 2000. A followup revised Event Notification (No. 37425) was provided to the NRC on November 7, 2000. Failure to classify the NUE was determined to be a missed opportunity. The change does not result in exceeding a threshold and thereby affect the color of the indicator.

2Q/00: Revised the reported number of drill, exercise and actual event opportunities performed timely and accurately during the month by two (2) to add the simulator drill performance as a result of an inspection. Changes do not result in a color change or threshold exceedance.

4Q/99: Revised to add simulator drill performance per inspection comments 3Q2000. Change does not result in a threshold exceedance.

ERO Drill Participation



Thresholds: White < 80.0% Yellow < 60.0%

Notes

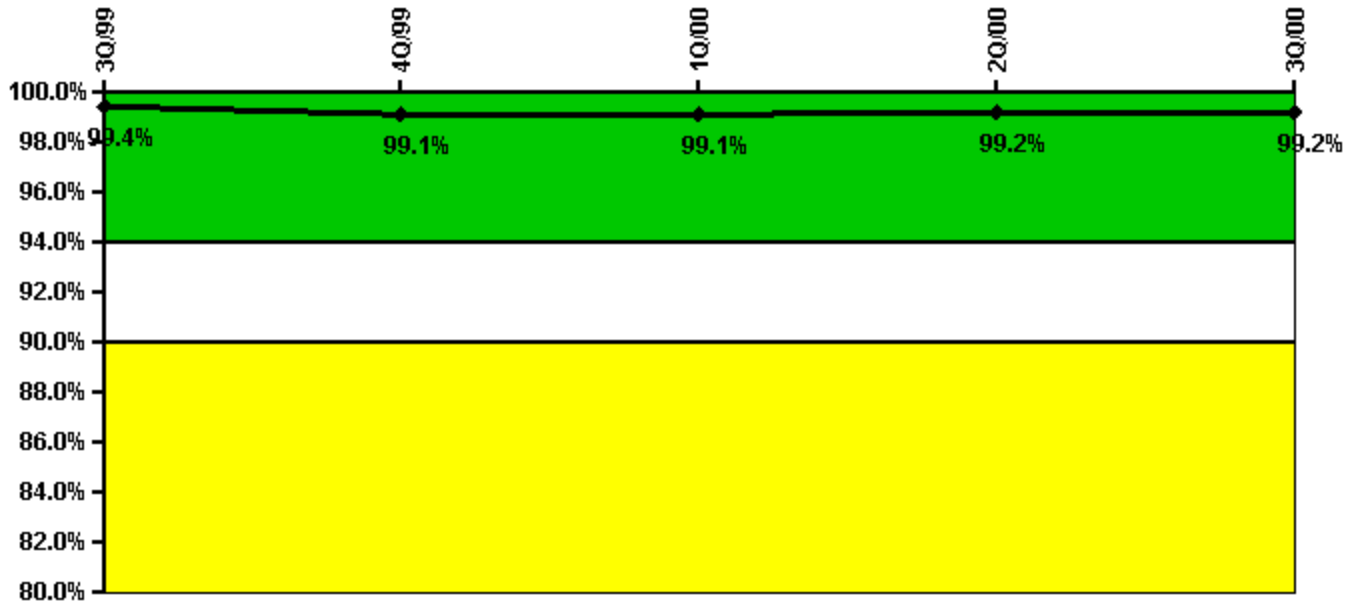
ERO Drill Participation	3Q/99	4Q/99	1Q/00	2Q/00	3Q/00
Participating Key personnel		58.0	62.0	62.0	60.0
Total Key personnel		59.0	67.0	63.0	61.0
Indicator value		98.3%	92.5%	98.4%	98.4%

Licensee Comments:

1Q/00: Revised to reduce by one the total number of key ERO members that have participated in a drill because an inspection discovered that a Shift Manager was qualified in the 1st quarter but did not participate in a drill until the 2nd quarter. Change does not result in a threshold exceedance.

4Q/99: Revised reported number by one to account for one new Shift Manager that was not yet qualified but counted. Change does not result in a threshold exceedance.

Alert & Notification System



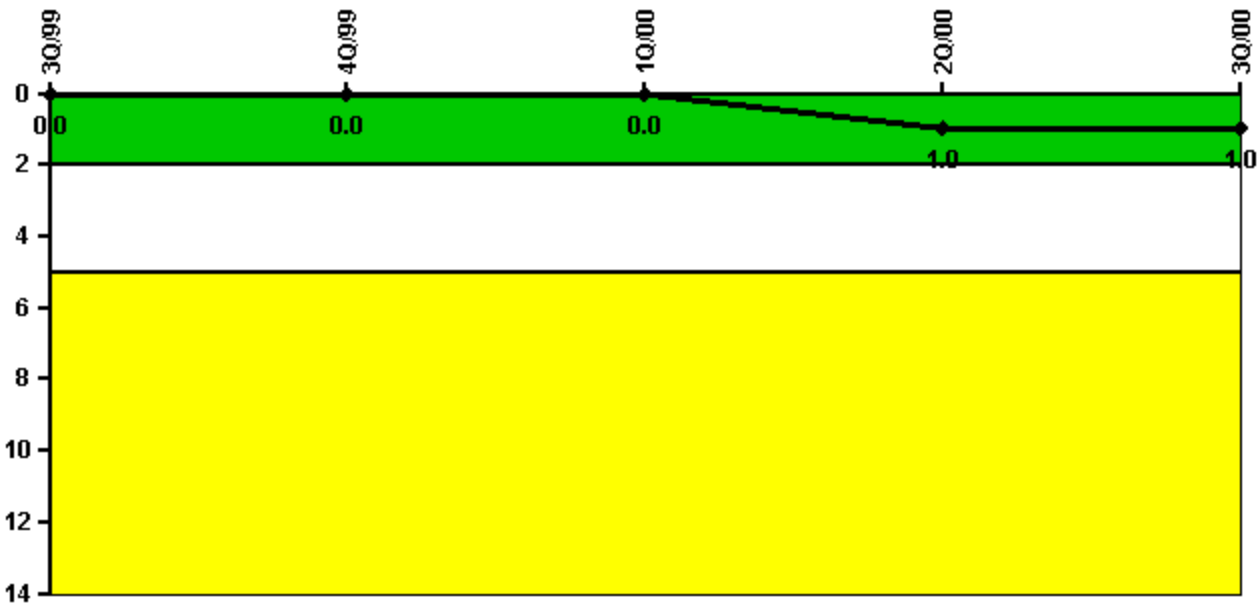
Thresholds: White < 94.0% Yellow < 90.0%

Notes

Alert & Notification System	3Q/99	4Q/99	1Q/00	2Q/00	3Q/00
Successful siren-tests	1067	1217	920	1225	914
Total sirens-tests	1078	1232	924	1232	924
Indicator value	99.4%	99.1%	99.1%	99.2%	99.2%

Licensee Comments: none

Occupational Exposure Control Effectiveness



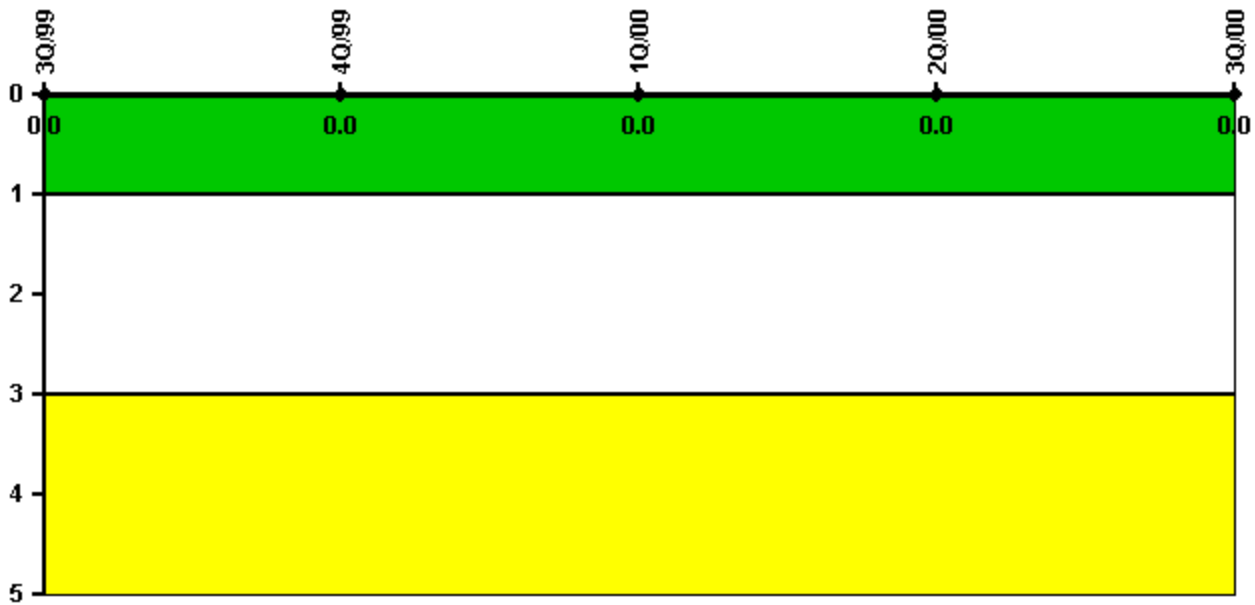
Thresholds: White > 2.0 Yellow > 5.0

Notes

Occupational Exposure Control Effectiveness	3Q/99	4Q/99	1Q/00	2Q/00	3Q/00
High radiation area occurrences	0	0	0	1	0
Very high radiation area occurrences	0	0	0	0	0
Unintended exposure occurrences	0	0	0	0	0
Indicator value	0	0	0	1	1

Licensee Comments: none

RETS/ODCM Radiological Effluent



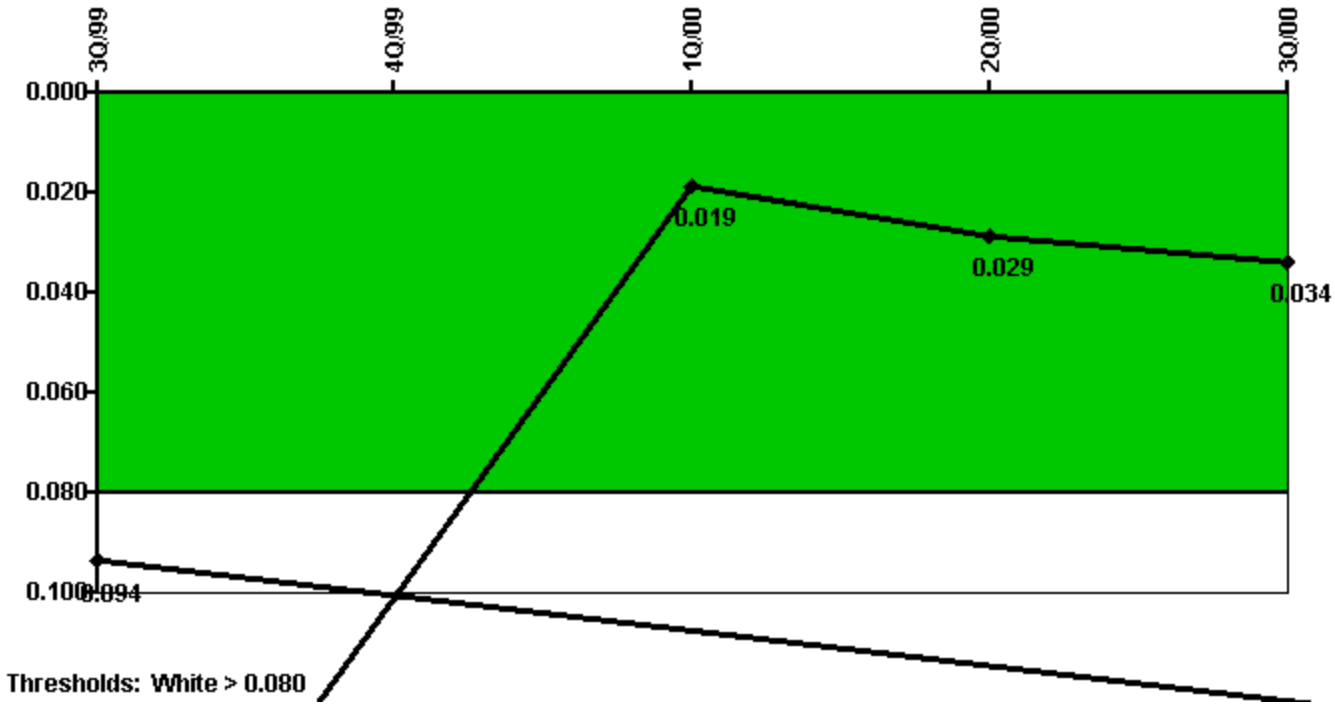
Thresholds: White > 1.0 Yellow > 3.0

Notes

RETS/ODCM Radiological Effluent	3Q/99	4Q/99	1Q/00	2Q/00	3Q/00
RETS/ODCM occurrences	0	0	0	0	0
Indicator value	0	0	0	0	0

Licensee Comments: none

Protected Area Security Performance Index

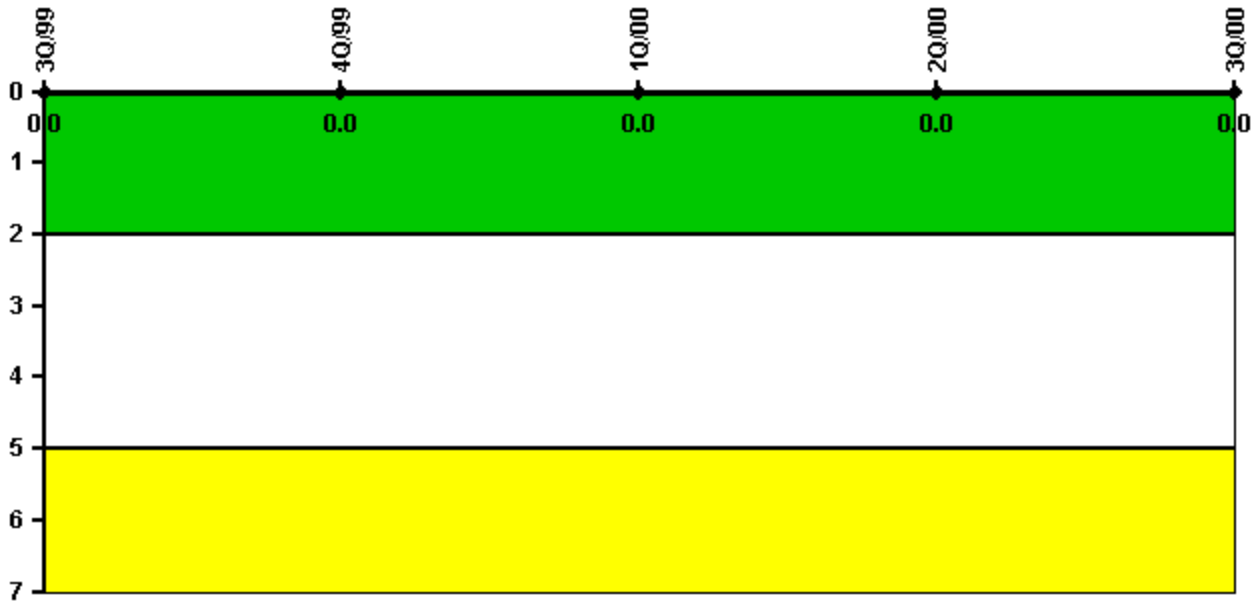


Notes

Protected Area Security Performance Index	3Q/99	4Q/99	1Q/00	2Q/00	3Q/00
IDS compensatory hours	116.00	234.00	87.30	207.80	235.20
CCTV compensatory hours	0	0	0	50.9	0
IDS normalization factor	1.85	1.85	1.40	1.40	1.40
CCTV normalization factor	1.2	1.2	1.1	1.1	1.1
Index Value	0.094	0.101	0.019	0.029	0.034

Licensee Comments: none

Personnel Screening Program



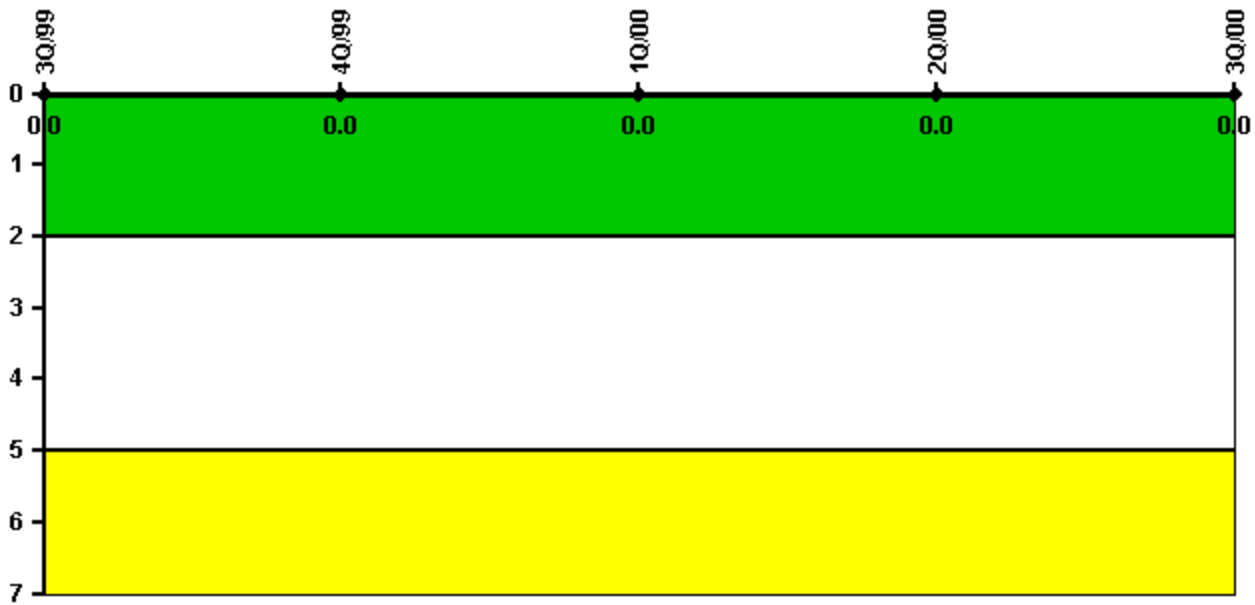
Thresholds: White > 2.0 Yellow > 5.0

Notes

Personnel Screening Program	3Q/99	4Q/99	1Q/00	2Q/00	3Q/00
Program failures	0	0	0	0	0
Indicator value	0	0	0	0	0

Licensee Comments: none

FFD/Personnel Reliability



Thresholds: White > 2.0 Yellow > 5.0

Notes

FFD/Personnel Reliability	3Q/99	4Q/99	1Q/00	2Q/00	3Q/00
Program Failures	0	0	0	0	0
Indicator value	0	0	0	0	0

Licensee Comments: none

▲ [PI Summary](#) | [Inspection Findings Summary](#) | [Reactor Oversight Process](#)

Last Modified: March 29, 2002