

APPENDIX G – PROJECT MAPS

Map 1. Vicinity Map

Map 2. Project Area Map with Alternatives 2 and 3

Map 3. Helicopter Logging Alternative Map

Map 4. Project Area Map with Seral Stages

Map 5. Project Area Map with August Modeled Flame Length

Map 6. Wildlife and Fisheries Analysis Area

Map 7. Hydrological Analysis Area Map

Map 8. Underwood Roadless Area Map



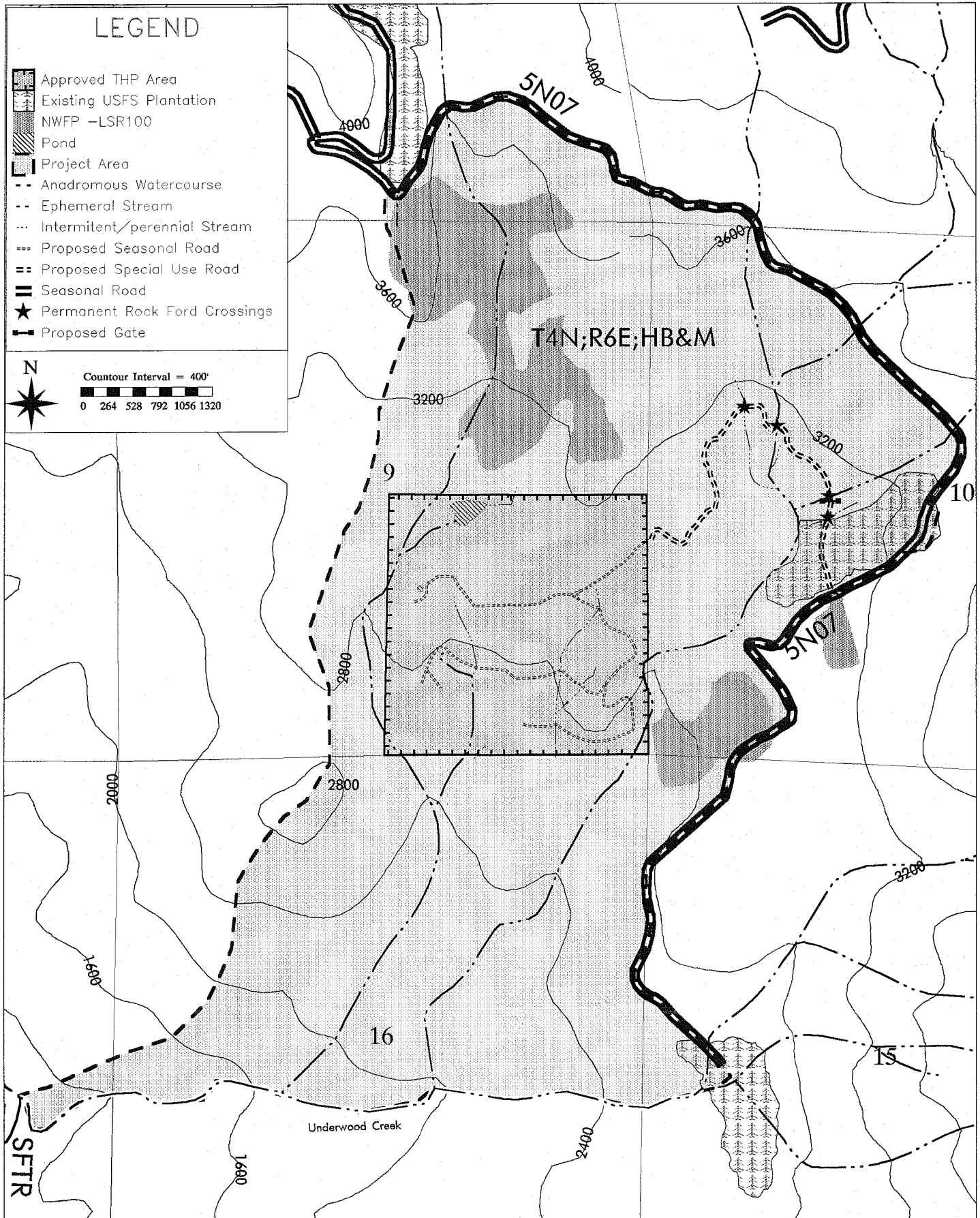
Six Rivers National Forest Lower Trinity Ranger District SPI ROAD PROJECT Vicinity Map



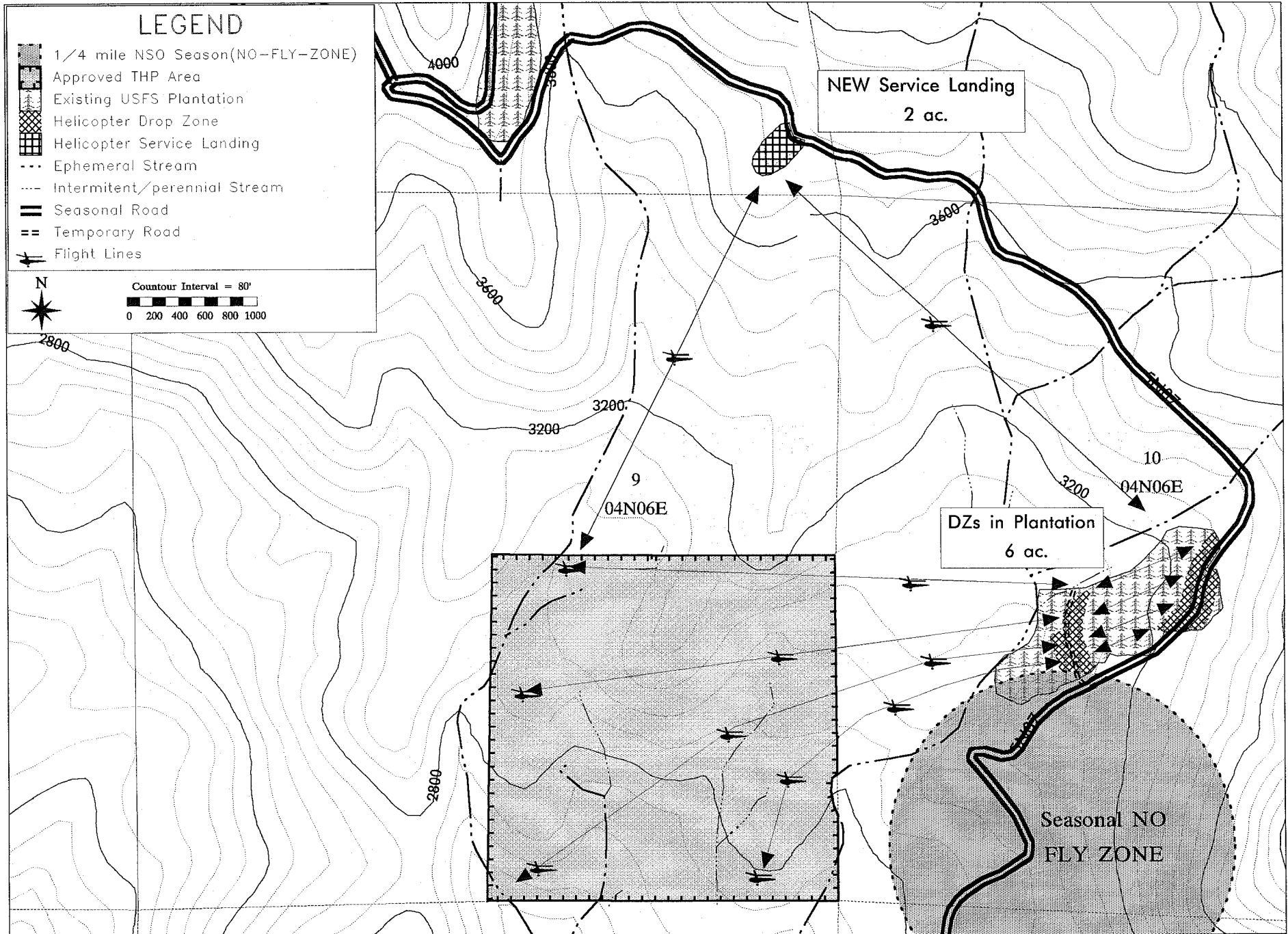
Map Not To Scale

Map Created by LTRD March 10, 2006

Project Area-Alternatives 2 & 3



Helicopter Logging Method Alternative



The following map includes seral stages in the legend that correspond to the following order and are defined as:

EH – Early Harvest: stands displaying harvest usually from clearcuts ***

LH – Late Harvest: stands displaying harvest ***

LM – Late Mature: natural stand no harvest ***

EM – Early Mature: natural stands no harvest

EA – Early Mature with dominants: natural stand with dominants **

MA – Mid mature with dominants: natural stand with dominants **

MM – Mid Mature: natural stand no harvest

SH – Shrub/Forb Harvest: stands resulting from harvest (usually clearcuts)

PN – Pole Natural: natural stand with no harvest





SN – Shrub/Forb Natural: natural stand with no harvest

** Early and mid mature stands with scattered dominant overstory remaining from the previous stand.




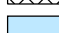






*** Early, mid and late mature harvest display some tree harvest removal. However, this harvest is insufficient to change the seral stage based on the remaining structure.

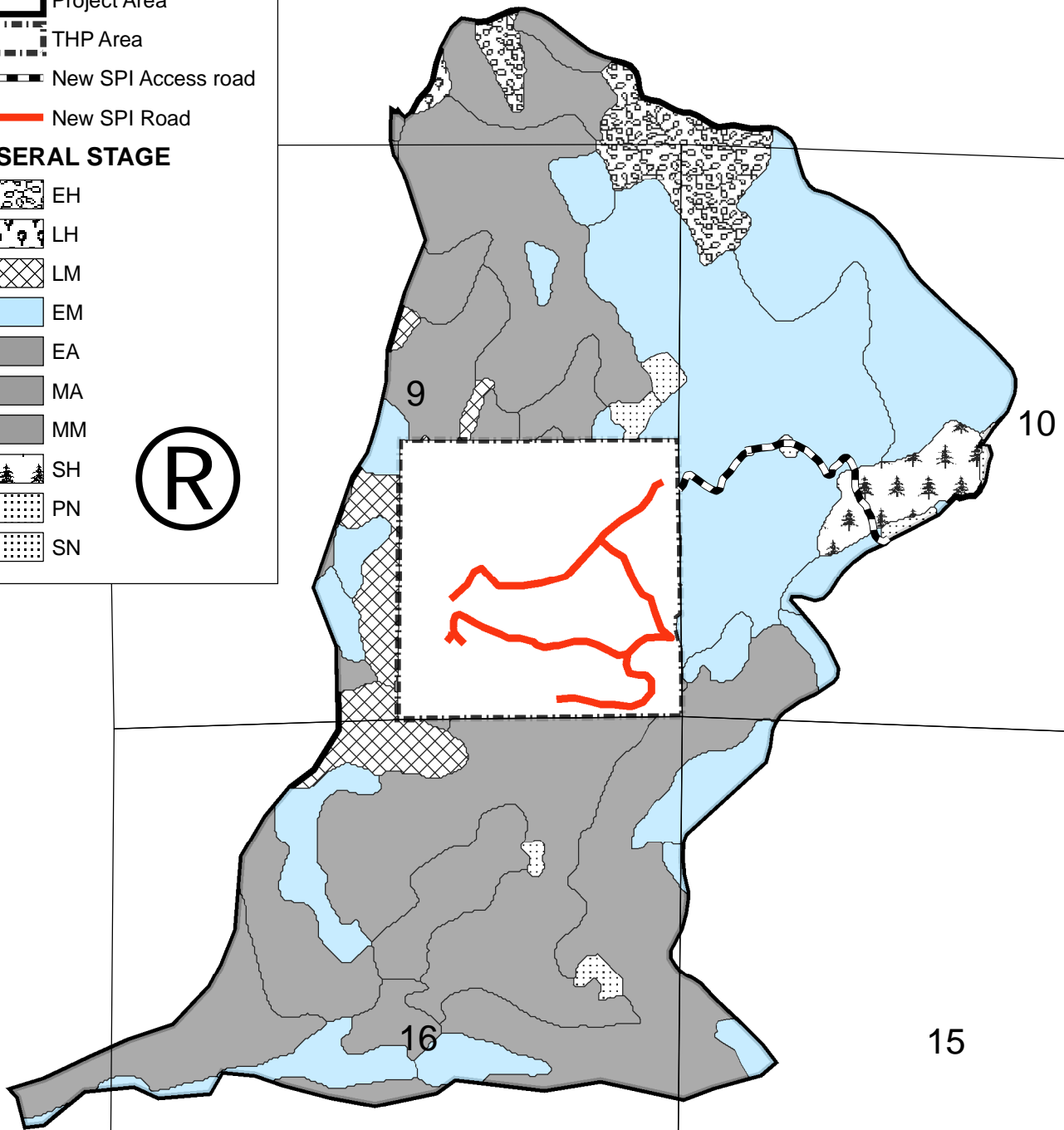
SPI Road Project

Legend

-  Project Area
-  THP Area
-  New SPI Access road
-  New SPI Road

SERAL STAGE

-  EH
-  LH
-  LM
-  EM
-  EA
-  MA
-  MM
-  SH
-  PN
-  SN

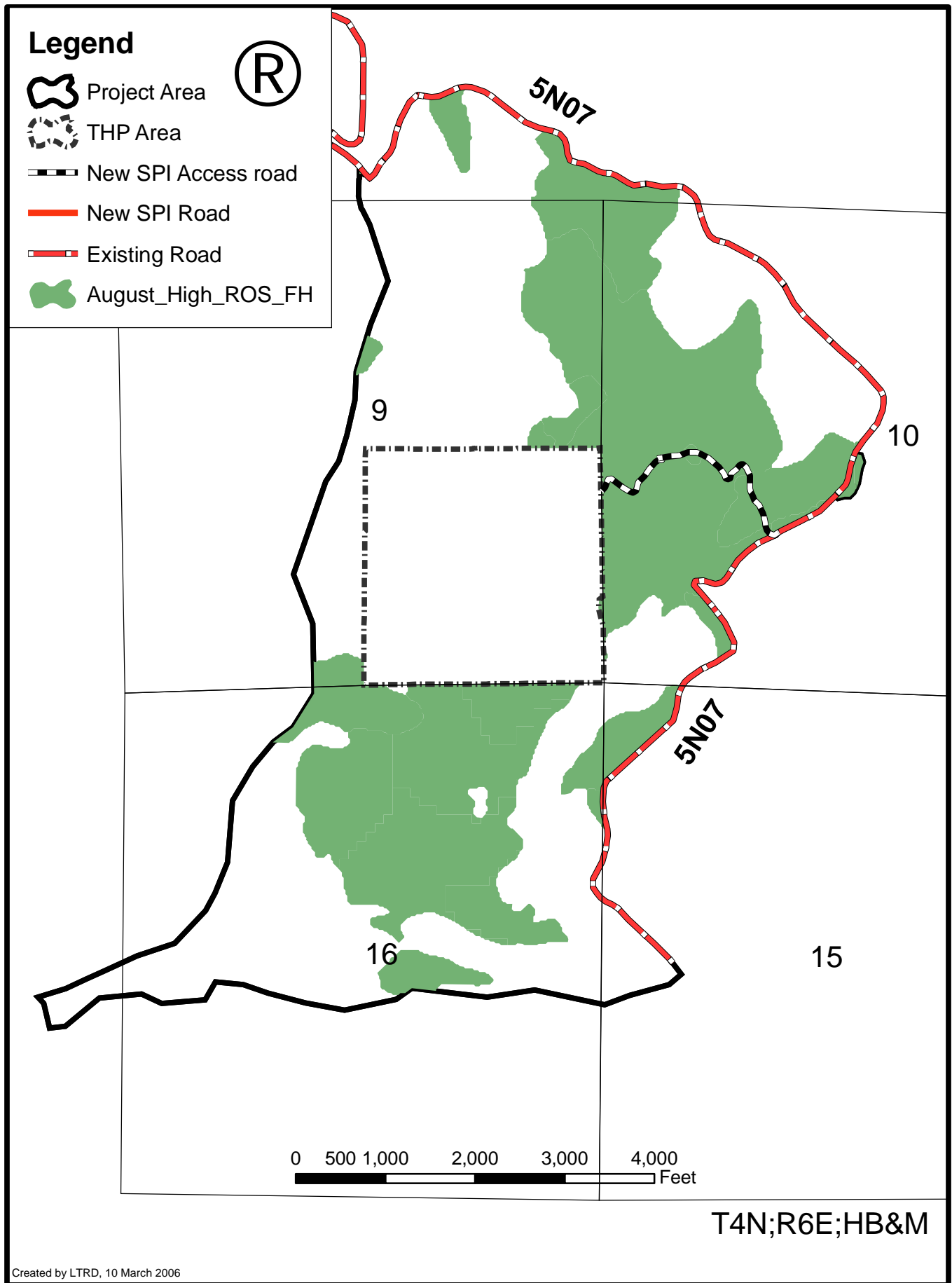


0 500 1,000 2,000 3,000 4,000 Feet

T4N;R6E;HB&M

SPI Road Project

High to Extreme August Modeled Flame Length



Wildlife and Fisheries Analysis Area

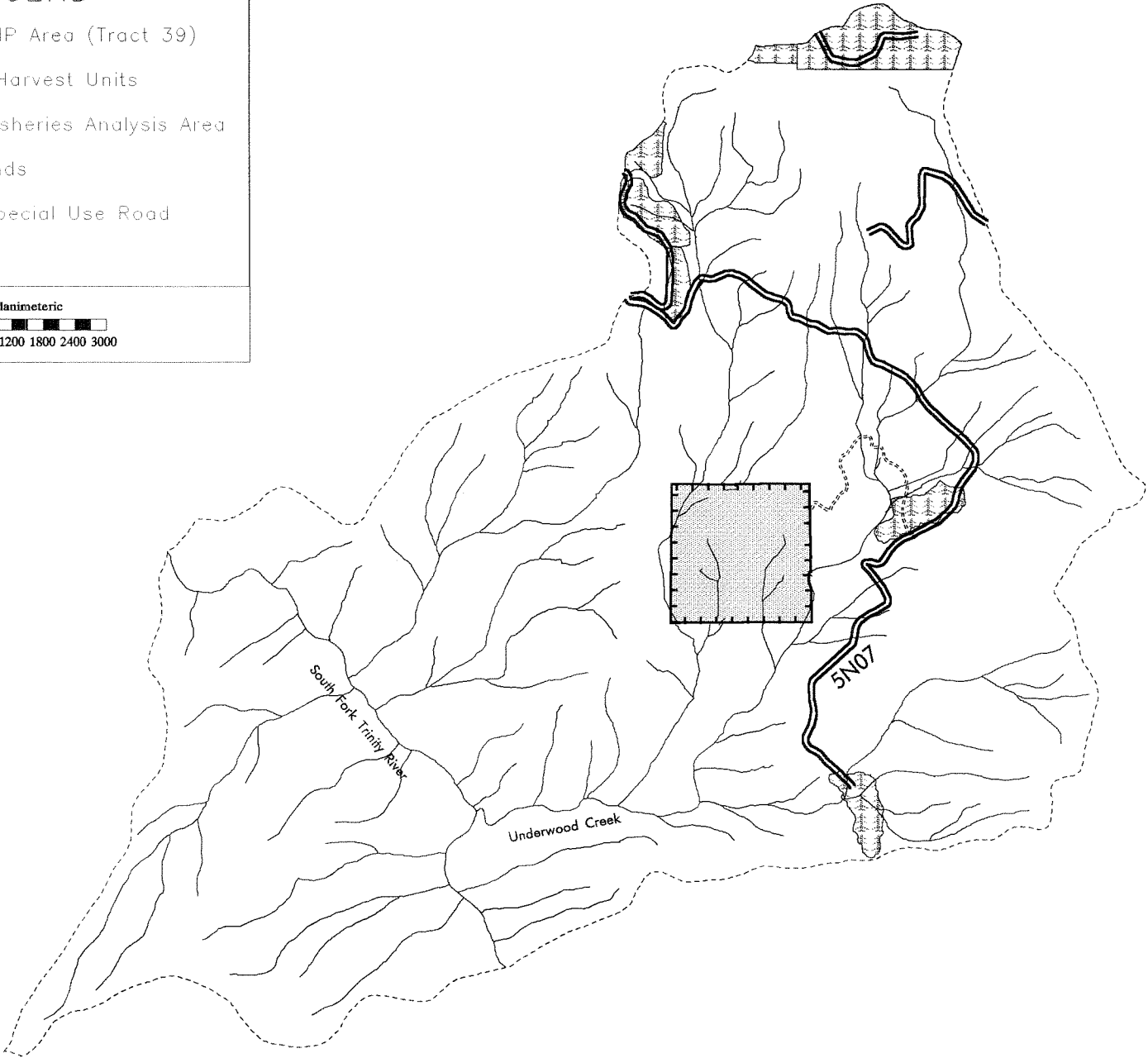
LEGEND

- Approved THP Area (Tract 39)
- Past USFS Harvest Units
- Wildlife & Fisheries Analysis Area
- Existing Roads
- Proposed Special Use Road
- Streams

N





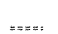

Planimetric

0 600 1200 1800 2400 3000



Hydrological Analysis Area

LEGEND

-  Approved THP Area (Tract 39)
-  Hydrological&Fisheries Analysis Area
-  Past USFS Harvest Units
-  Existing Roads
-  Proposed Special Use Road
-  Streams



Planimetric
0 540 1080 1620 2160 2700

