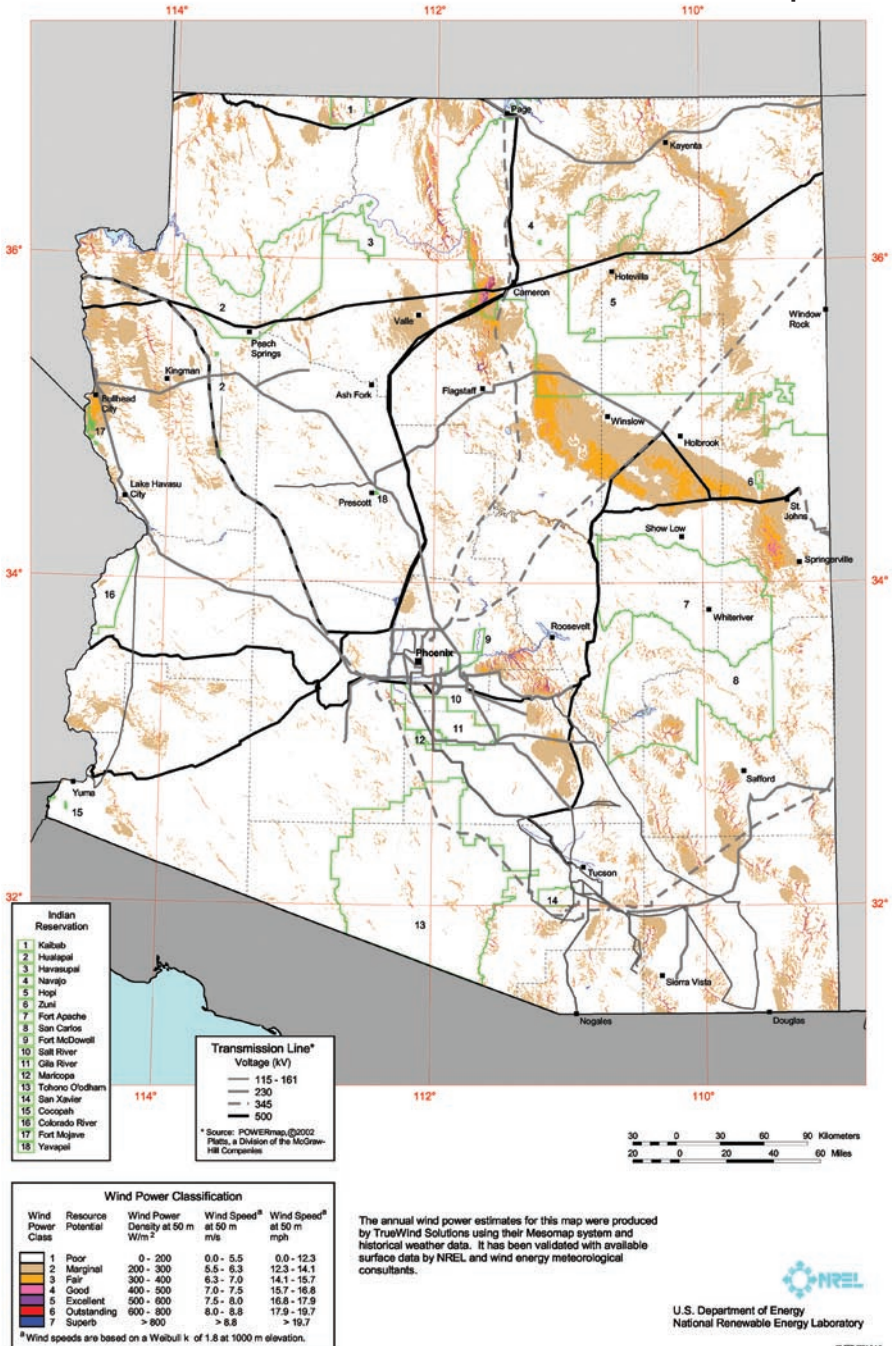


Arizona 50-Meter Wind Resource Map



This resource map shows wind speed estimates at 50 meters above the ground and depicts the resource that could be used for utility-scale wind development. As a renewable resource, wind is classified according to wind power classes, which are based on typical wind speeds. These classes range from Class 1 (the lowest) to Class 7 (the highest). In general, at 50 meters, wind power Class 4 or higher can be useful for generating wind power with large turbines. Class 4 and above are considered good resources. Particular locations in the Class 3 areas could have higher wind power class values at 80 meters than shown on the 50 meter map because of possible high wind shear. Given the advances in technology, a number of locations in the Class 3 areas may be suitable for utility-scale wind development.

Wind Energy Information Sources

Arizona Wind Working Group

Patricia Ponce, Northern Arizona University
PO BOX 15600
Flagstaff, AZ 86011
(928) 523-2380
pat.ponce@nau.edu
www.wind.nau.edu/azwwg/

American Wind Energy Association

1101 14th St. NW, 12 Floor
Washington, D.C. 20005
(202) 383-2500
windmail@awea.org
www.awea.org

National Renewable Energy Laboratory/ National Wind Technology Center

1617 Cole Blvd.
Golden, CO 80401
(303) 275-4090
public_affairs@nrel.gov
www.nrel.gov/wind

National Wind Coordinating Collaborative

c/o RESOLVE
1255 23rd St. NW, Ste. 275
Washington, D.C. 20037
Toll free: (888) 764-WIND (9463)
nwcc@resolv.org
www.nationalwind.org

Utility Wind Integration Group

PO Box 2787
Reston, VA 20195
(865) 691-5540, ext. 141
sandy@uwig.org
www.uwig.org

Windustry

2105 First Ave. South
Minneapolis, MN 55404
Toll-free: (800) 946-3640
info@windustry.org
www.windustry.org

Photo: Big Horn Wind Farm, Bickelton, Washington. PIX15176



www.windpoweringamerica.gov