

Table 1
Child Care and Development Fund
Average Monthly Adjusted Number of Families and Children Served (FFY 1999)

States/Territories	Number of Families	Number of Children
Alabama	14,300	24,500
Alaska	3,800	6,300
American Samoa	200	400
Arizona	22,000	36,600
Arkansas	7,000	11,200
California	97,900	137,400
Colorado	13,200	23,800
Connecticut	5,400	9,800
Delaware	3,500	5,900
District of Columbia	4,400	6,500
Florida	43,400	76,600
Georgia	21,400	38,100
Guam	-	-
Hawaii	4,600	7,100
Idaho	4,400	7,600
Illinois	48,500	92,000
Indiana	10,900	20,200
Iowa	9,000	20,000
Kansas	7,200	13,100
Kentucky	15,200	26,200
Louisiana	22,900	39,000
Maine	2,000	2,900
Maryland	13,000	22,200
Massachusetts	26,700	39,900
Michigan	26,500	52,300
Minnesota	10,000	17,600
Mississippi	8,400	17,900
Missouri	39,000	58,400
Montana	3,600	6,400
Nebraska	6,800	12,100
Nevada	3,000	5,900
New Hampshire	4,600	6,800
New Jersey	23,100	34,000
New Mexico	10,000	16,600
New York	106,600	170,000
North Carolina	44,600	69,300
North Dakota	2,900	4,600
Northern Marianas	-	-
Ohio	33,900	58,400
Oklahoma	18,800	30,800
Oregon	10,700	20,200
Pennsylvania	41,200	83,900
Puerto Rico	300	500
Rhode Island	3,800	6,400
South Carolina	10,800	17,800
South Dakota	2,100	3,700
Tennessee	29,900	63,100
Texas	53,900	96,600
Utah	7,100	13,300
Vermont	3,400	5,000
Virgin Islands	-	-
Virginia	17,500	27,100
Washington	27,400	46,100
West Virginia	7,800	13,200
Wisconsin	14,100	24,900
Wyoming	1,900	3,300
Total	974,600	1,653,500

Notes:

1. The source for this table is the ACF-801 data from FFY 1999.
2. The adjusted number of families and children served is the average number reported by each State on the monthly ACF-801 submission multiplied by the pooling factor reported in the ACF-800 form.
3. For all States, the average monthly number of children is extrapolated from data provided by States, based on the ratio of children to families.
4. Maine, Guam, Northern Marianas, Puerto Rico, and Virgin Islands were unable to report any ACF-801 case-level data in FFY 1999 at the time of report preparation. The Maine counts are estimates based on reported expenditures (ACF-696), ME's FFY 2001 reported counts (ACF-801), and average monthly cost-per-child in NH & VT (ACF-801 FFY 1999, 2000, & 2001).
5. California, District of Columbia, Kansas, Missouri, Nebraska, New Jersey, North Carolina, and Tennessee average monthly numbers are based on FFY 1999 pooling factors that only apply to the ACF-801 data (generally 99-100%).
6. California average monthly numbers are an estimate based on October 2000 family counts (when 99% of CCDF funded agencies reported data), FFY 1999 ACF-696 data, and on an estimated FFY 1999 pooling factor that only applies to the ACF-801 data.

Table 2
Child Care and Development Fund
Percent of Children Served by Payment Method (FFY 1999)

State	Grants / Contracts %	Certificates %	Cash %
Alabama	18%	82%	0%
Alaska	0%	100%	0%
American Samoa	0%	100%	0%
Arizona	0%	100%	0%
Arkansas	12%	88%	0%
California	59%	41%	0%
Colorado	1%	98%	1%
Connecticut	25%	75%	0%
Delaware	0%	100%	0%
District of Columbia	42%	58%	0%
Florida	73%	24%	3%
Georgia	3%	97%	0%
Guam	0%	100%	0%
Hawaii	0%	0%	100%
Idaho	0%	100%	0%
Illinois	12%	88%	0%
Indiana	1%	99%	0%
Iowa	0%	100%	0%
Kansas	0%	93%	7%
Kentucky	0%	100%	0%
Louisiana	0%	71%	29%
Maine	18%	80%	2%
Maryland	0%	100%	0%
Massachusetts	30%	71%	0%
Michigan	0%	100%	0%
Minnesota	0%	100%	0%
Mississippi	24%	76%	0%
Missouri	0%	100%	0%
Montana	0%	100%	0%
Nebraska	0%	100%	0%
Nevada	16%	84%	0%
New Hampshire	0%	100%	0%
New Jersey	25%	75%	0%
New Mexico	1%	99%	0%
New York	24%	75%	0%
North Carolina	0%	100%	0%
North Dakota	3%	97%	0%
Northern Mariana Islands	0%	100%	0%
Ohio	0%	100%	0%
Oklahoma	0%	100%	0%
Oregon	13%	87%	0%
Pennsylvania	0%	73%	27%
Puerto Rico	51%	49%	0%
Rhode Island	0%	100%	0%
South Carolina	8%	92%	0%
South Dakota	0%	100%	0%
Tennessee	0%	100%	0%
Texas	0%	82%	18%
Utah	0%	0%	100%
Vermont	1%	99%	0%
Virgin Islands	3%	97%	0%
Virginia	0%	100%	0%
Washington	0%	64%	36%
West Virginia	0%	100%	0%
Wisconsin	0%	100%	0%
Wyoming	0%	100%	0%
Nationally	12%	82%	6%

Notes:

1. The source for this table is ACF-800 data for FFY 1999.
2. A "0%" indication often means the value is less than 0.5% rather than actually zero.

Table 3				
Child Care and Development Fund				
Percent of Children Served by Types of Care (FFY 1999)				
State	Child's Home	Family Home	Group Home	Center
Alabama	0%	18%	6%	76%
Alaska	4%	52%	2%	42%
American Samoa	0%	1%	0%	99%
Arizona	2%	20%	4%	74%
Arkansas	1%	18%	0%	80%
California	3%	21%	5%	71%
Colorado	10%	34%	0%	56%
Connecticut	54%	6%	0%	39%
Delaware	4%	39%	2%	55%
District of Columbia	0%	5%	0%	94%
Florida	2%	13%	0%	85%
Georgia	2%	19%	2%	78%
Guam	18%	42%	1%	39%
Hawaii	10%	70%	0%	20%
Idaho	2%	39%	15%	45%
Illinois	32%	37%	1%	30%
Indiana	8%	58%	0%	35%
Iowa	1%	51%	12%	36%
Kansas	7%	15%	42%	36%
Kentucky	2%	32%	1%	64%
Louisiana	32%	17%	0%	51%
Maine	1%	22%	0%	23%
Maryland	23%	42%	0%	35%
Massachusetts	16%	10%	18%	57%
Michigan	31%	47%	8%	14%
Minnesota	10%	60%	0%	30%
Mississippi	8%	10%	2%	80%
Missouri	0%	61%	1%	38%
Montana	0%	35%	33%	32%
Nebraska	0%	35%	7%	57%
Nevada	2%	12%	0%	86%
New Hampshire	-	-	-	-
New Jersey	1%	25%	0%	74%
New Mexico	0%	55%	4%	40%
New York	15%	45%	6%	33%
North Carolina	1%	16%	1%	82%
North Dakota	0%	43%	27%	29%
Northern Mariana	0%	71%	0%	29%
Ohio	0%	35%	1%	64%
Oklahoma	0%	18%	0%	81%
Oregon	13%	64%	1%	22%
Pennsylvania	6%	37%	3%	54%
Puerto Rico	3%	37%	9%	50%
Rhode Island	9%	27%	0%	64%
South Carolina	3%	17%	3%	77%
South Dakota	5%	58%	8%	30%
Tennessee	1%	21%	5%	73%
Texas	7%	12%	3%	78%
Utah	3%	56%	4%	37%
Vermont	4%	55%	0%	41%
Virgin Islands	4%	20%	14%	62%
Virginia	1%	44%	0%	55%
Washington	24%	36%	0%	40%
West Virginia	0%	57%	1%	42%
Wisconsin	0%	36%	0%	64%
Wyoming	14%	41%	15%	31%
National	9%	30%	3%	57%

Notes:

1. The source for this table is ACF-800 data for FFY 1999.
2. New Hampshire did not submit data for setting type.
3. Maine submitted data, but the total number of children by setting type did not add up to the total number of children.
4. A "0%" indication often means the value is less than 0.5% rather than actually zero.
5. In a few instances, the sum of the categories may not appear to add up to exactly 100% because of rounding.

Table 4 Child Care and Development Fund Percent of Children Served in Regulated Settings vs. Settings Legally Operating Without Regulation (FFY		
State	Licensed / Regulated	Legally Operating Without Regulation
Alabama	74%	26%
Alaska	55%	45%
American Samoa	100%	0%
Arizona	88%	12%
Arkansas	100%	0%
California	84%	16%
Colorado	76%	24%
Connecticut	46%	54%
Delaware	83%	17%
District of Columbia	99%	1%
Florida	88%	12%
Georgia	88%	12%
Guam	37%	63%
Hawaii	24%	76%
Idaho	59%	41%
Illinois	40%	60%
Indiana	44%	56%
Iowa	73%	27%
Kansas	86%	14%
Kentucky	69%	31%
Louisiana	51%	49%
Maine	41%	5%
Maryland	65%	35%
Massachusetts	81%	19%
Michigan	30%	70%
Minnesota	67%	33%
Mississippi	82%	18%
Missouri	48%	52%
Montana	87%	14%
Nebraska	100%	0%
Nevada	74%	26%
New Hampshire	-	-
New Jersey	85%	15%
New Mexico	46%	54%
New York	52%	48%
North Carolina	95%	5%
North Dakota	100%	0%
Northern Mariana Islands	100%	0%
Ohio	100%	0%
Oklahoma	100%	0%
Oregon	38%	62%
Pennsylvania	65%	35%
Puerto Rico	62%	38%
Rhode Island	68%	32%
South Carolina	85%	15%
South Dakota	78%	22%
Tennessee	85%	15%
Texas	84%	16%
Utah	50%	50%
Vermont	87%	13%
Virgin Islands	68%	32%
Virginia	81%	19%
Washington	64%	36%
West Virginia	87%	13%
Wisconsin	100%	0%
Wyoming	55%	45%
National	73%	27%

Notes:

1. The source for this table is ACF-800 data for FFY 1999.
2. New Hampshire did not report the number of children by setting type.
3. Maine submitted data, but the total number of children by setting type did not add up to the
4. A "0%" indication often means the value is less than 0.5% rather than actually zero.

Table 5
Child Care and Development Fund
Of Children Served in Settings Legally Operating Without Regulation,
Percent Served by Relatives vs. Non-Relatives (FFY 1999)

State	Relative	Non-Relative
Alabama	34%	66%
Alaska	29%	72%
American Samoa	-	-
Arizona	100%	0%
Arkansas	0%	100%
California	62%	39%
Colorado	43%	57%
Connecticut	72%	28%
Delaware	49%	51%
District of Columbia	74%	26%
Florida	17%	83%
Georgia	24%	76%
Guam	29%	71%
Hawaii	75%	25%
Idaho	47%	53%
Illinois	56%	44%
Indiana	37%	63%
Iowa	31%	69%
Kansas	73%	27%
Kentucky	48%	52%
Louisiana	41%	59%
Maine	38%	62%
Maryland	79%	21%
Massachusetts	49%	51%
Michigan	78%	22%
Minnesota	45%	55%
Mississippi	66%	34%
Missouri	46%	54%
Montana	10%	90%
Nebraska	-	-
Nevada	15%	85%
New Hampshire	-	-
New Jersey	30%	70%
New Mexico	75%	25%
New York	40%	60%
North Carolina	80%	20%
North Dakota	-	-
Northern Mariana Islands	-	-
Ohio	-	-
Oklahoma	-	-
Oregon	29%	71%
Pennsylvania	22%	78%
Puerto Rico	56%	44%
Rhode Island	80%	20%
South Carolina	1%	99%
South Dakota	74%	26%
Tennessee	18%	82%
Texas	100%	0%
Utah	36%	64%
Vermont	43%	57%
Virgin Islands	41%	59%
Virginia	79%	21%
Washington	67%	33%
West Virginia	91%	9%
Wisconsin	-	-
Wyoming	53%	47%
National	52%	48%

Notes:

1. The source of this table is ACF-800 data for FFY 1999.
2. American Samoa, Nebraska, North Dakota, Northern Mariana Islands, Ohio, Oklahoma, and Wisconsin did not report having children served in settings legally operating without regulation.
3. New Hampshire did not report the number of children by setting type.
4. A "0%" indication often means the value is less than 0.5% rather than actually zero.
5. In a few instances, the sum of the categories may not appear to add up to exactly 100% because of rounding.

Table 6
Child Care and Development Fund
Percent of Children Served in All Types of Care (FFY 1999)

State	Total Percent	Licensed or Regulated				Providers Legally Operating Without Regulation						
		Child's Home	Family Home	Group Home	Center	Child's Home		Family Home		Group Home		Center
						Relative	Non-Relative	Relative	Non-Relative	Relative	Non-Relative	
Alabama	100%	0%	9%	6%	59%	0%	0%	9%	0%	0%	0%	17%
Alaska	100%	0%	11%	2%	42%	1%	3%	11%	29%	0%	0%	0%
American Samoa	100%	0%	1%	0%	99%	0%	0%	0%	0%	0%	0%	0%
Arizona	100%	0%	10%	4%	74%	2%	0%	10%	0%	0%	0%	0%
Arkansas	100%	1%	18%	0%	80%	0%	0%	0%	0%	0%	0%	0%
California	100%	0%	9%	5%	70%	2%	1%	8%	4%	0%	0%	1%
Colorado	100%	0%	20%	0%	56%	2%	8%	8%	6%	0%	0%	0%
Connecticut	100%	0%	6%	0%	39%	39%	15%	0%	0%	0%	0%	1%
Delaware	100%	0%	34%	2%	47%	4%	0%	5%	0%	0%	0%	8%
District of Columbia	100%	0%	4%	0%	94%	0%	0%	1%	0%	0%	0%	0%
Florida	100%	0%	9%	0%	79%	0%	1%	2%	2%	0%	0%	6%
Georgia	100%	0%	9%	2%	78%	0%	2%	3%	7%	0%	0%	0%
Guam	100%	0%	0%	1%	36%	18%	0%	0%	42%	0%	0%	3%
Hawaii	100%	0%	7%	0%	17%	5%	5%	52%	11%	0%	0%	4%
Idaho	100%	0%	0%	15%	45%	1%	1%	19%	20%	0%	0%	0%
Illinois	100%	0%	12%	1%	28%	11%	21%	22%	3%	0%	0%	2%
Indiana	100%	0%	17%	0%	26%	4%	3%	17%	24%	0%	0%	8%
Iowa	100%	0%	25%	12%	36%	1%	1%	8%	18%	0%	0%	0%
Kansas	100%	0%	8%	42%	36%	3%	4%	7%	0%	0%	0%	0%
Kentucky	100%	0%	4%	1%	64%	2%	1%	13%	15%	0%	0%	0%
Louisiana	100%	0%	0%	0%	51%	18%	14%	2%	15%	0%	0%	0%
Maine	46%	0%	18%	0%	23%	0%	0%	1%	3%	0%	0%	0%
Maryland	100%	0%	31%	0%	35%	16%	7%	12%	0%	0%	0%	0%
Massachusetts	100%	0%	6%	18%	57%	6%	10%	4%	0%	0%	0%	0%
Michigan	100%	0%	8%	8%	14%	16%	15%	39%	0%	0%	0%	0%
Minnesota	100%	0%	39%	0%	28%	7%	3%	9%	12%	0%	0%	3%
Mississippi	100%	0%	0%	2%	80%	6%	2%	6%	5%	0%	0%	0%
Missouri	100%	0%	13%	1%	33%	0%	0%	24%	24%	0%	0%	4%
Montana	101%	0%	21%	33%	32%	0%	0%	1%	12%	0%	0%	0%
Nebraska	100%	0%	35%	7%	57%	0%	0%	0%	0%	0%	0%	0%
Nevada	100%	0%	4%	0%	69%	2%	0%	2%	6%	0%	0%	16%
New Hampshire	-	-	-	-	-	-	-	-	-	-	-	-
New Jersey	100%	0%	11%	0%	74%	1%	0%	4%	10%	0%	0%	0%
New Mexico	100%	0%	2%	4%	40%	0%	0%	40%	13%	0%	0%	0%
New York	100%	0%	12%	6%	33%	7%	8%	12%	20%	0%	0%	0%
North Carolina	100%	0%	12%	1%	82%	0%	0%	3%	1%	0%	0%	0%
North Dakota	100%	0%	43%	27%	29%	0%	0%	0%	0%	0%	0%	0%
Northern Mariana Islands	100%	0%	71%	0%	29%	0%	0%	0%	0%	0%	0%	0%
Ohio	100%	0%	35%	1%	64%	0%	0%	0%	0%	0%	0%	0%
Oklahoma	100%	0%	18%	0%	81%	0%	0%	0%	0%	0%	0%	0%
Oregon	100%	0%	21%	1%	17%	5%	9%	13%	30%	0%	0%	5%
Pennsylvania	100%	0%	8%	3%	54%	2%	4%	6%	23%	0%	0%	0%
Puerto Rico	100%	0%	3%	9%	50%	2%	2%	19%	15%	0%	1%	0%
Rhode Island	100%	0%	4%	0%	63%	3%	6%	23%	0%	0%	0%	0%
South Carolina	100%	0%	5%	3%	77%	0%	3%	0%	11%	0%	0%	0%
South Dakota	100%	0%	41%	8%	30%	3%	2%	13%	4%	0%	0%	0%
Tennessee	100%	0%	7%	5%	73%	1%	0%	2%	12%	0%	0%	0%
Texas	100%	0%	3%	3%	78%	7%	0%	9%	0%	0%	0%	0%
Utah	100%	0%	9%	4%	37%	1%	1%	16%	31%	0%	0%	0%
Vermont	100%	0%	46%	0%	41%	2%	2%	4%	5%	0%	0%	0%
Virgin Islands	100%	0%	0%	14%	54%	3%	1%	11%	9%	0%	0%	9%
Virginia	100%	0%	26%	0%	54%	1%	0%	14%	4%	0%	0%	0%
Washington	100%	0%	24%	0%	40%	12%	12%	12%	0%	0%	0%	0%
West Virginia	100%	0%	46%	1%	41%	0%	0%	11%	0%	0%	0%	1%
Wisconsin	100%	0%	36%	0%	64%	0%	0%	0%	0%	0%	0%	0%
Wyoming	100%	0%	10%	15%	31%	9%	5%	15%	16%	0%	0%	0%
National	100%	0%	13%	3%	56%	5%	4%	10%	7%	0%	0%	1%

Notes:

1. The source for this data is ACF-800 data from FFY 1999.
2. Maine and Montana submitted data, but the number of children by setting type did not add up to the total number of children listed for their States.
3. New Hampshire did not report number of children by setting type.
4. A "0%" indication often means the value is less than 0.5% rather than actually zero.
5. In a few instances, the sum of the categories may not appear to add up to exactly 100% because of rounding.

Table 7
Child Care and Development Fund
Number of Child Care Providers Receiving CCDF Funds (FFY 1999)

State	Child's Home	Family Home	Group Home	Center	Total
Alabama	51	3,326	352	1,778	5,507
Alaska	300	3,639	63	397	4,399
American Samoa	0	1	0	15	16
Arizona	559	5,456	440	2,853	9,308
Arkansas	111	652	0	803	1,566
California	3,489	21,929	4,664	8,843	38,925
Colorado	2,798	7,014	0	1,328	11,140
Connecticut	20,469	1,671	60	1,124	23,324
Delaware	342	1,424	25	294	2,085
District of Columbia	18	88	0	130	236
Florida	527	7,827	0	8,297	16,651
Georgia	932	7,621	325	4,997	13,875
Guam	168	356	2	55	581
Hawaii	301	5,821	0	723	6,845
Idaho	45	1,219	288	333	1,885
Illinois	54,557	43,293	370	3,525	101,745
Indiana	2,880	16,756	0	1,877	21,513
Iowa	332	8,270	864	806	10,272
Kansas	773	1,313	1,960	656	4,702
Kentucky	493	8,105	85	1,502	10,185
Louisiana	14,967	6,196	0	1,231	22,394
Maine	51	1,279	0	260	1,727
Maryland	6,812	8,337	0	1,465	16,614
Massachusetts	6,898	4,471	72	1,186	12,627
Michigan	37,551	43,382	2,629	2,356	85,918
Minnesota	3,270	20,138	0	10,237	33,645
Mississippi	1,675	2,051	177	1,260	5,163
Missouri	417	24,571	124	1,321	26,433
Montana	14	1,822	478	249	2,563
Nebraska	0	2,140	269	683	3,092
Nevada	220	655	11	466	1,352
New Hampshire	-	-	-	-	-
New Jersey	782	8,982	0	2,214	11,978
New Mexico	40	9,538	192	523	10,293
New York	9,200	28,779	1,599	3,280	42,858
North Carolina	502	7,049	133	3,870	11,554
North Dakota	0	1,977	827	94	2,898
Northern Mariana Islands	0	58	0	5	63
Ohio	26	10,183	79	2,900	13,188
Oklahoma	97	3,256	0	3,682	7,035
Oregon	2,471	11,287	77	597	14,432
Pennsylvania	294	10,076	620	4,632	15,622
Puerto Rico	196	1,385	539	655	2,775
Rhode Island	807	1,695	6	268	2,776
South Carolina	554	2,232	194	1,393	4,373
South Dakota	262	1,485	47	107	1,901
Tennessee	485	8,450	750	3,550	13,235
Texas	8,151	12,057	944	5,843	26,995
Utah	350	7,852	611	5,155	13,968
Vermont	224	1,648	0	340	2,212
Virgin Islands	13	208	49	118	388
Virginia	-	-	-	-	-
Washington	18,719	13,749	0	1,740	34,208
West Virginia	19	2,196	17	232	2,464
Wisconsin	37	6,205	0	1,932	8,174
Wyoming	424	1,284	519	1,029	3,256
National	204,673	412,454	20,461	105,209	742,797

Notes:

1. The source for this table is ACF-800 data for FFY 1999.
2. Maine submitted data, but the number of providers by setting did not add up to the amount of total providers listed.
3. New Hampshire and Virginia did not report the number of providers by setting type.
4. National is the sum of the national categories (row sum)

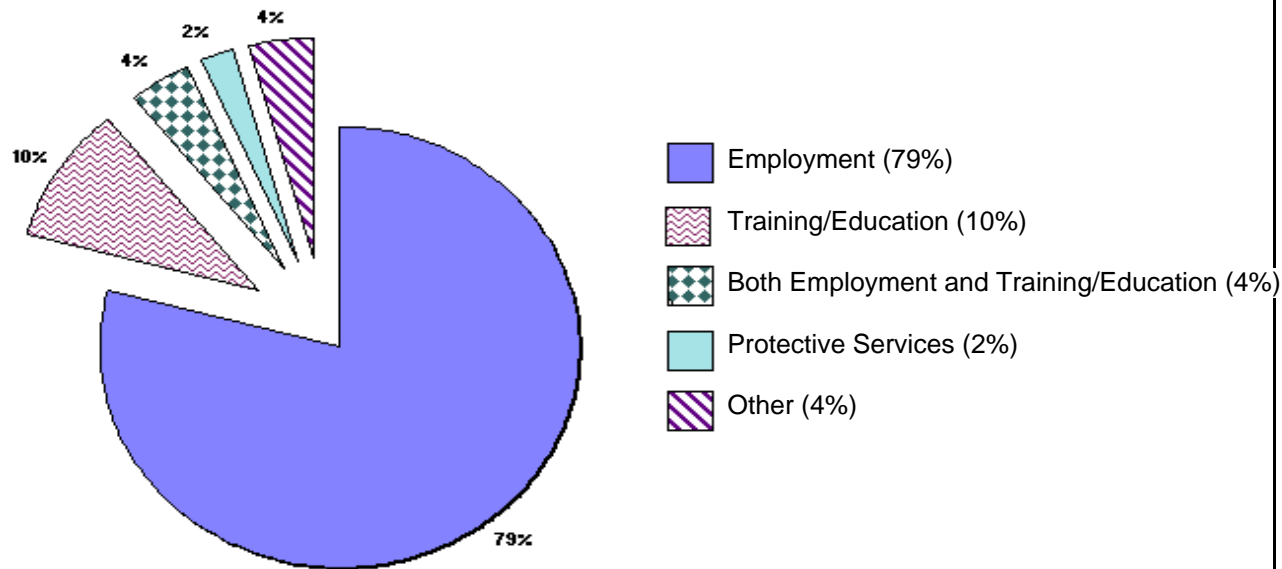
**Table 8
Child Care and Development Fund
Consumer Education Strategies Summary (FFY 1999)**

State	Grants / Contracts or Certificate Info	Resource and Referral	Provider List	Types/ Quality of Care Materials	Health and Safety	Child Care Regulatory Info	Child Care Compliant Policy	Mass Media	Other	Number of Families Receiving Info
Alabama	Y	Y	Y	Y	Y	Y	Y	Y	Y	52,823
Alaska	NA	Y	Y	Y	Y	Y	Y	Y	N	11,767
American Samoa	NA	Y	Y	Y	Y	Y	Y	Y	Y	425
Arizona	Y	Y	Y	Y	Y	Y	Y	Y	N	385,113
Arkansas	Y	Y	Y	Y	Y	Y	Y	Y	N	12,640
California	Y	Y	Y	Y	Y	Y	Y	Y	N	1,218,529
Colorado	Y	Y	Y	Y	Y	Y	Y	Y	N	114,521
Connecticut	Y	Y	Y	Y	Y	Y	Y	N	Y	72,237
Delaware	NA	N	Y	Y	Y	N	Y	Y	N	10,276
District of Columbia	Y	Y	Y	Y	Y	Y	Y	Y	Y	56,034
Florida	Y	Y	Y	Y	Y	Y	Y	Y	Y	250,000
Georgia	Y	Y	Y	Y	Y	Y	Y	Y	N	54,572
Guam	Y	Y	Y	Y	Y	Y	Y	Y	N	1,146
Hawaii	N	Y	Y	Y	Y	Y	Y	N	N	9,182
Idaho	NA	Y	Y	Y	Y	N	Y	Y	N	8,855
Illinois	Y	Y	Y	Y	Y	Y	Y	Y	N	256,930
Indiana	Y	Y	Y	Y	Y	Y	Y	Y	N	39,930
Iowa	N	Y	Y	Y	Y	Y	Y	Y	N	29,500
Kansas	NA	Y	Y	Y	Y	Y	Y	Y	N	23,023
Kentucky	N	Y	Y	Y	Y	N	Y	N	N	56,133
Louisiana	NA	Y	Y	Y	Y	Y	Y	Y	N	48,610
Maine	Y	Y	Y	Y	Y	Y	Y	Y	-	9,315
Maryland	Y	Y	Y	Y	Y	Y	Y	Y	N	295,631
Massachusetts	Y	Y	Y	Y	Y	N	N	Y	Y	86,456
Michigan	NA	Y	Y	Y	Y	Y	Y	N	N	509,517
Minnesota	NA	Y	Y	Y	Y	Y	Y	Y	N	1,850,000
Mississippi	Y	Y	Y	Y	Y	Y	Y	N	Y	23,468
Missouri	Y	Y	Y	Y	Y	Y	Y	Y	N	483,350
Montana	Y	Y	Y	Y	Y	Y	Y	Y	N	209,713
Nebraska	N	Y	Y	Y	Y	Y	Y	Y	N	415,427
Nevada	Y	Y	Y	Y	Y	Y	Y	Y	Y	6,841
New Hampshire	Y	Y	Y	Y	Y	N	N	N	N	8,050
New Jersey	Y	Y	N	Y	Y	Y	Y	Y	N	100,802
New Mexico	Y	N	Y	Y	Y	Y	Y	N	Y	16,168
New York	Y	Y	Y	Y	Y	Y	Y	Y	N	302,212
North Carolina	Y	Y	Y	Y	Y	N	Y	Y	N	259,409
North Dakota	Y	Y	Y	Y	Y	Y	Y	Y	N	3,500
Northern Mariana	NA	Y	Y	Y	Y	Y	Y	Y	N	79
Ohio	Y	Y	Y	Y	Y	Y	Y	Y	N	95,014
Oklahoma	NA	Y	Y	Y	Y	Y	Y	Y	N	1,277,687
Oregon	Y	Y	Y	Y	Y	Y	Y	Y	N	31,344
Pennsylvania	Y	Y	Y	Y	Y	Y	Y	Y	N	178,179
Puerto Rico	Y	Y	Y	Y	Y	N	Y	N	N	7,901
Rhode Island	NA	Y	Y	Y	Y	Y	Y	Y	Y	21,628
South Carolina	Y	Y	Y	Y	Y	N	Y	N	N	20,837
South Dakota	N	Y	Y	Y	Y	Y	Y	Y	N	128,077
Tennessee	Y	Y	Y	Y	N	Y	Y	N	N	39,000
Texas	NA	Y	Y	Y	Y	Y	Y	Y	N	101,069
Utah	NA	Y	Y	Y	Y	Y	Y	Y	Y	350,853
Vermont	N	Y	Y	Y	Y	Y	Y	Y	N	6,178
Virgin Islands	NA	Y	Y	Y	Y	Y	Y	Y	N	600
Virginia	Y	N	Y	Y	N	N	Y	N	N	80,000
Washington	NA	Y	Y	Y	Y	Y	Y	Y	N	147,728
West Virginia	NA	Y	Y	Y	Y	Y	Y	N	N	7,919
Wisconsin	Y	Y	N	Y	Y	Y	Y	Y	N	37,163
Wyoming	NA	Y	Y	Y	Y	N	Y	Y	N	6,502
Total Yes	33	53	54	56	53	47	54	44	11	9,829,863

Notes:

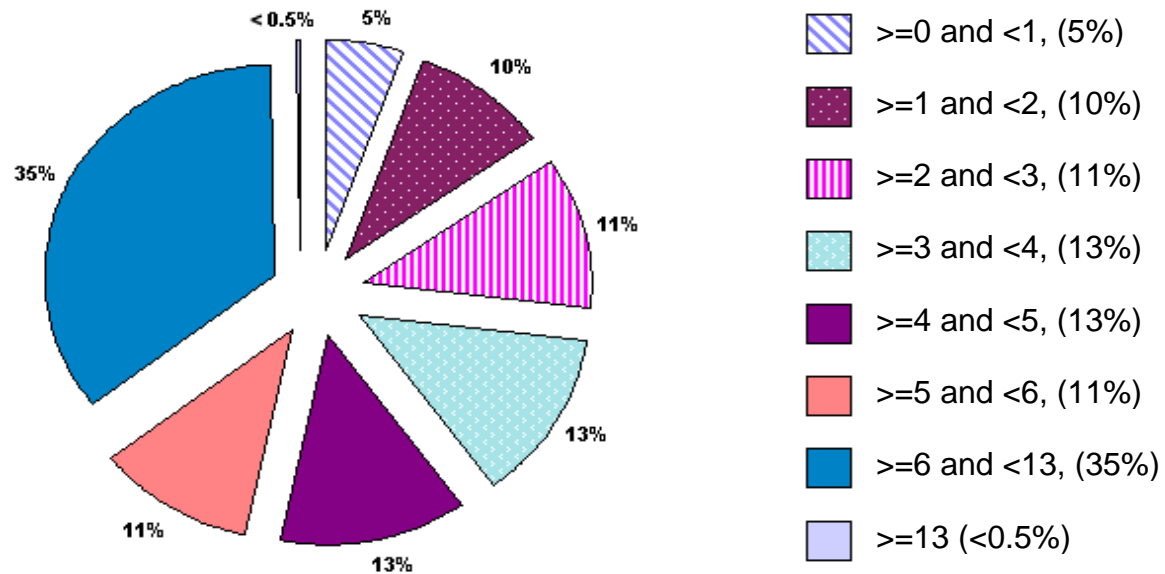
1. Source for this table is the ACF-800 data for FFY 1999.
2. NA=Not applicable, does not offer grants or contracts for subsidized child care slots.

**Child Care and Development Fund
Percentage of Children Served By Reason for Care (FFY 1999)**



Source: ACF-801 Reports - Average monthly values for FFY 1999
Note the sum of the categories may not appear to add up to exactly 100% because of rounding.

Child Care and Development Fund Percentage of Children Served By Age Group (FFY 1999)



Source: ACF-801 Reports - Average monthly values for FFY 1999
Note the sum of the categories may not appear to add up to exactly 100% because of rounding.

