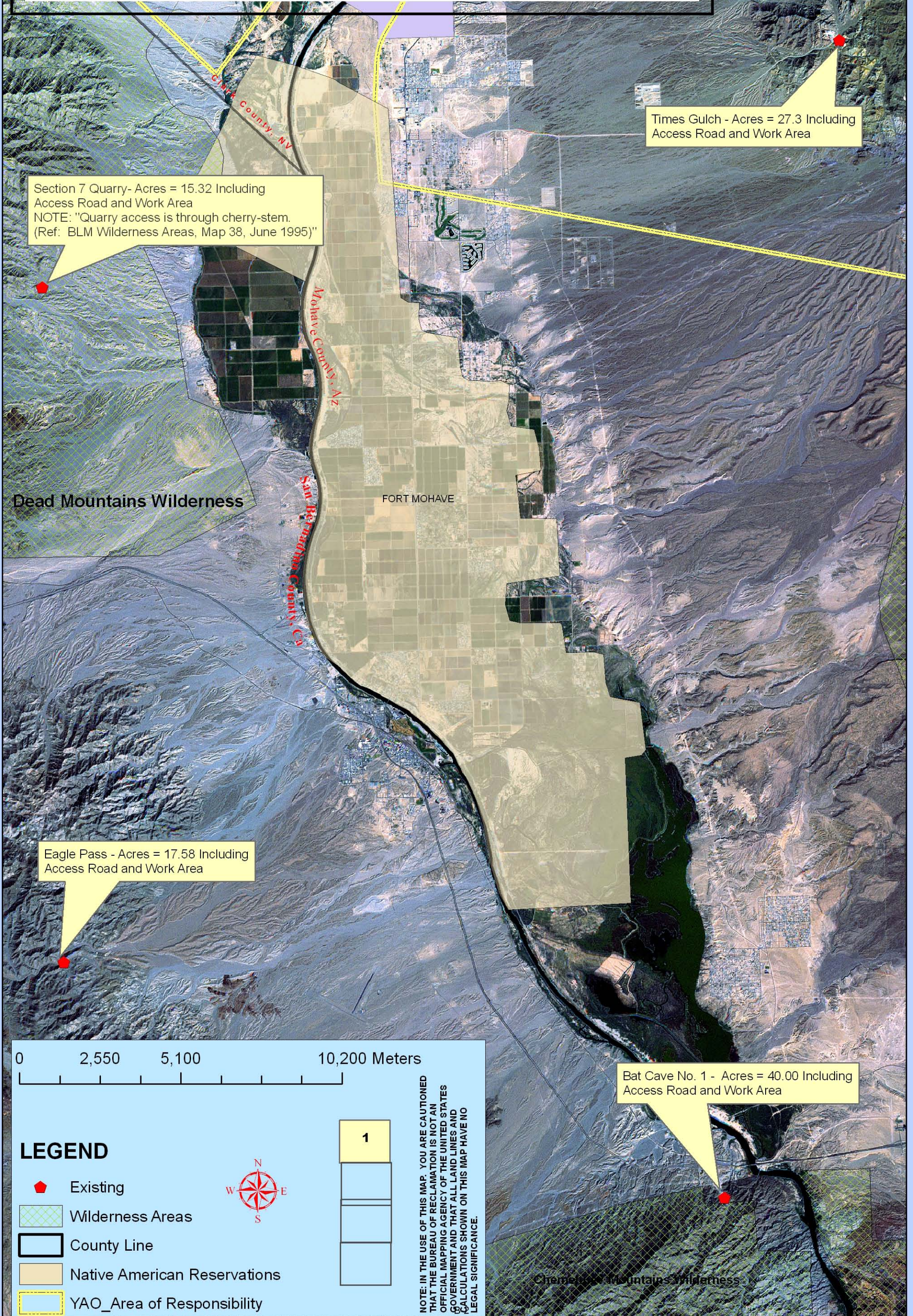


APPENDIX B
MAPS OF PROPOSED QUARRY SITES

This Page Intentionally Blank

RECLAMATION

Managing Water in the West



Times Gulch - Acres = 27.3 Including Access Road and Work Area

Section 7 Quarry- Acres = 15.32 Including Access Road and Work Area
NOTE: "Quarry access is through cherry-stem.
(Ref: BLM Wilderness Areas, Map 38, June 1995)"

Dead Mountains Wilderness

FORT MOHAVE

San Bernardino County, Ca

Mohave County, AZ

Clark County, NV

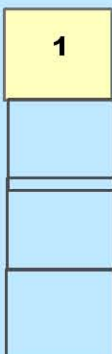
Eagle Pass - Acres = 17.58 Including Access Road and Work Area

Bat Cave No. 1 - Acres = 40.00 Including Access Road and Work Area



LEGEND

- Existing
- Wilderness Areas
- County Line
- Native American Reservations
- YAO_Area of Responsibility

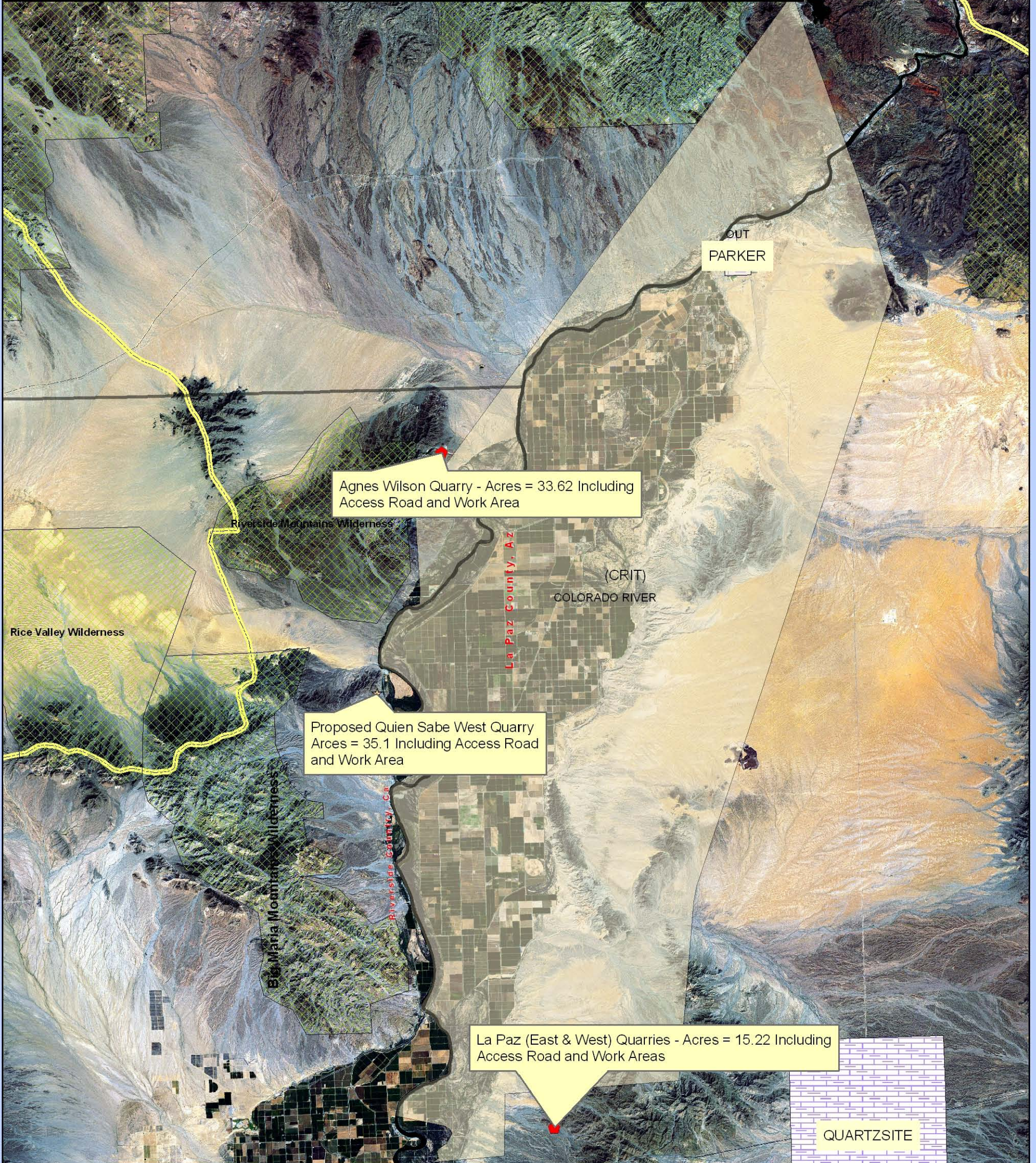


NOTE: IN THE USE OF THIS MAP, YOU ARE CAUTIONED THAT THE BUREAU OF RECLAMATION IS NOT AN OFFICIAL MAPPING AGENCY OF THE UNITED STATES GOVERNMENT AND THAT ALL LAND LINES AND CALCULATIONS SHOWN ON THIS MAP HAVE NO LEGAL SIGNIFICANCE.

Chemung Mountains Wilderness

RECLAMATION

Managing Water in the West



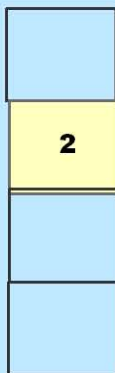
0 4,850 9,700 19,400 Meters

LEGEND

Quarries Sites

STATUS

- ◆ Existing
- ★ Proposed
- Wilderness Areas
- County Line
- Native American Reservations
- YAO_Area of Responsibility



NOTE: IN THE USE OF THIS MAP, YOU ARE CAUTIONED THAT THE BUREAU OF RECLAMATION IS NOT AN OFFICIAL MAPPING AGENCY OF THE UNITED STATES GOVERNMENT AND THAT ALL LAND LINES AND CALCULATIONS SHOWN ON THIS MAP HAVE NO LEGAL SIGNIFICANCE.

RECLAMATION

Managing Water in the West

COLORADO RIVER

Ehrenberg Quarry - Acres = 18.8
Including Access Road and Work Area

Ripley Quarry - Acres = 32.4
Including Access Road and Work Area

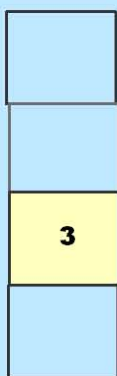
Trigo Wash Quarry - Acres = 20.1
Including Access Road and Work Area

Palo Verde Road Quarry - Acres = 28.6 Including
2 Access Roads (one to Outfall Drain the other to hwy 78
and Work Area

0 3,150 6,300 12,600 Meters

LEGEND

- Existing
- Wilderness Areas
- County Line
- Native American Reservations
- YAO_Area of Responsibility

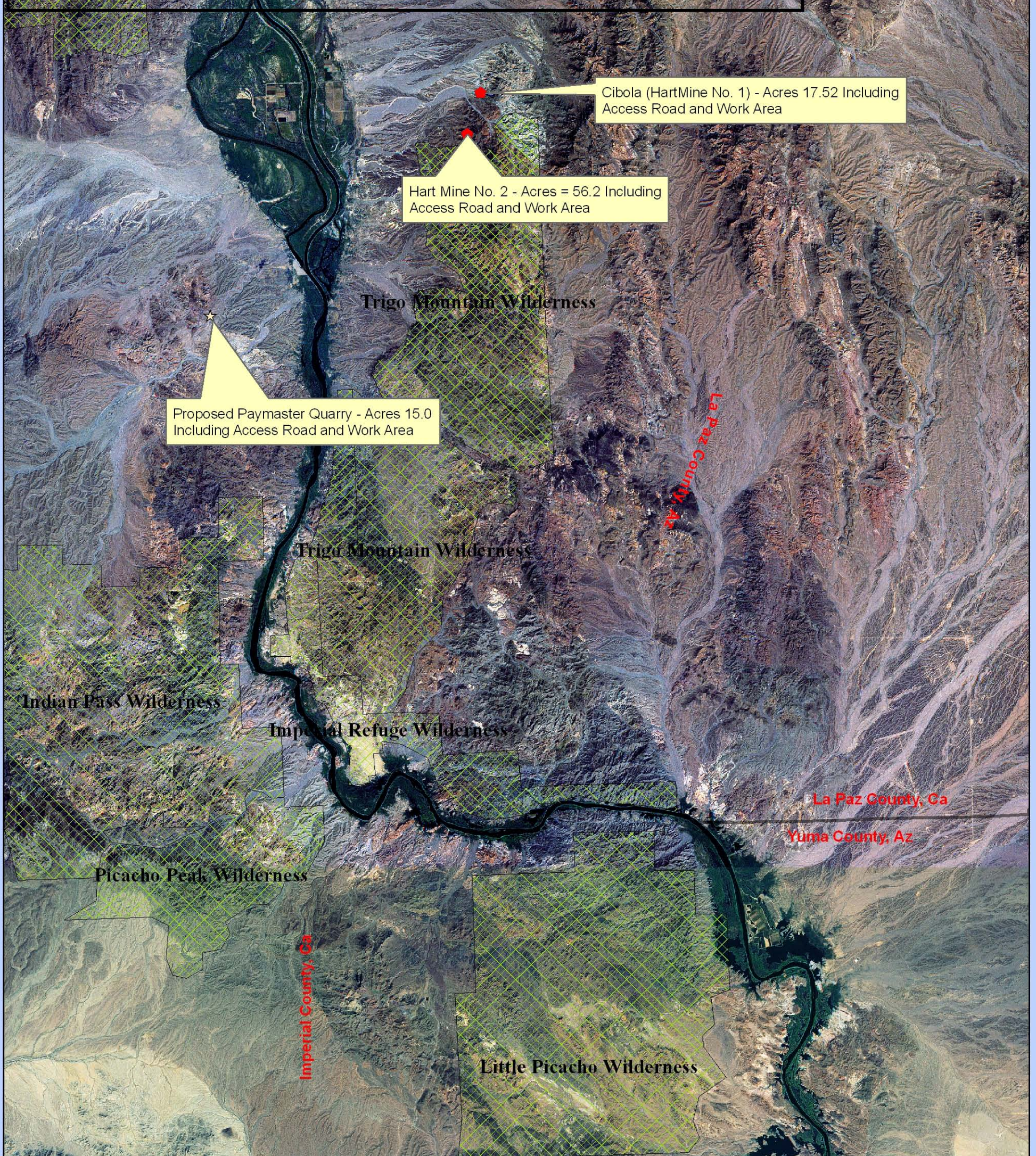


NOTE: IN THE USE OF THIS MAP,
YOU ARE CAUTIONED THAT THE
BUREAU OF RECLAMATION IS NOT
AN OFFICIAL MAPPING AGENCY OF
THE UNITED STATES GOVERNMENT
AND THAT ALL LAND LINES AND
CALCULATIONS SHOWN ON THIS MAP
HAVE NO LEGAL SIGNIFICANCE.

B-4

RECLAMATION

Managing Water in the West



Cibola (HartMine No. 1) - Acres 17.52 Including Access Road and Work Area

Hart Mine No. 2 - Acres = 56.2 Including Access Road and Work Area

Proposed Paymaster Quarry - Acres 15.0 Including Access Road and Work Area

Trigo Mountain Wilderness

Trigo Mountain Wilderness

Indian Pass Wilderness

Imperial Refuge Wilderness

La Paz County, Ca

Yuma County, Az

Picacho Peak Wilderness

Imperial County, Ca

Little Picacho Wilderness

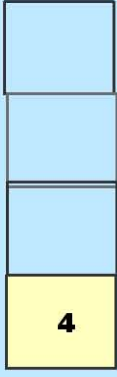
0 3,250 6,500 13,000 Meters

LEGEND

Quarries Sites

STATUS

- ◆ Existing
- ☆ Proposed
- Wilderness Areas
- County Line
- Native American Reservations
- YAO_Area of Responsibility



NOTE: IN THE USE OF THIS MAP, YOU ARE CAUTIONED THAT THE BUREAU OF RECLAMATION IS NOT AN OFFICIAL MAPPING AGENCY OF THE UNITED STATES GOVERNMENT AND THAT ALL LAND LINES AND CALCULATIONS SHOWN ON THIS MAP HAVE NO LEGAL SIGNIFICANCE.

B-5

Laguna Dam East - Acres = 15.32 Including Several Access Roads and Work Area