

Appendix F

Draft Hydrologic Modeling of the Pacific Institute Salton Sea Restoration Concept

Pacific Institute Impoundment Proposal

*Paul A. Weghorst, PE
Bureau of Reclamation
January 8, 2002*

Purpose

- *Characterize hydrologic conditions*
 - Main Sea
 - South Impoundment
 - North Impoundment

(Both impoundments evaluated with dikes constructed at –245 feet)

General Modeling Assumptions

- *Reductions in inflow will occur*
 - Start at baseline = 1.24 maf/yr
 - Future inflow = 1.00 maf/yr
 - Approximates possible reductions from water transfers
 - Consistent with evaluation of other restoration alternatives
- *Simulation Period: 2000 to 2074*
- *Dike Construction*
 - Constructed In Water
 - Dikes Closed in 2007

Sediment Load Assumptions

- *Sediment Load Rate = 0.53 tons/af*
 - From Draft Report:
 - Sedimentation / Siltation Total Maximum Daily Load for the Alamo River
 - Assumed same for New, Alamo, and Whitewater Rivers
- *Sediment Density = 1.2 tons/yd³*
- *Impoundment trap rate = 100 percent*

Nutrient Load Assumptions

- *Nutrient Loading for 1999^{1/} Prorated According to Annual Inflows*
 - Total N
 - Total P

^{1/} Source: Setmire, Jim et al., 2001. Eutrophic Conditions at the Salton Sea. A Topical Paper From the Eutrophication Workshop Convened at the University of California at Riverside, Sept. 7-8, 2000.

Wetlands Assumptions

- *Water Losses = 0.8 * Pan Evaporation^{1/}*
- *Surface Area Requirements*
 - Based on Imperial Wetlands
Requirement = 0.012 acres/af
- *Sediment Removal = 90 Percent^{2/}*

• *Nutrient Removal*^{3/}

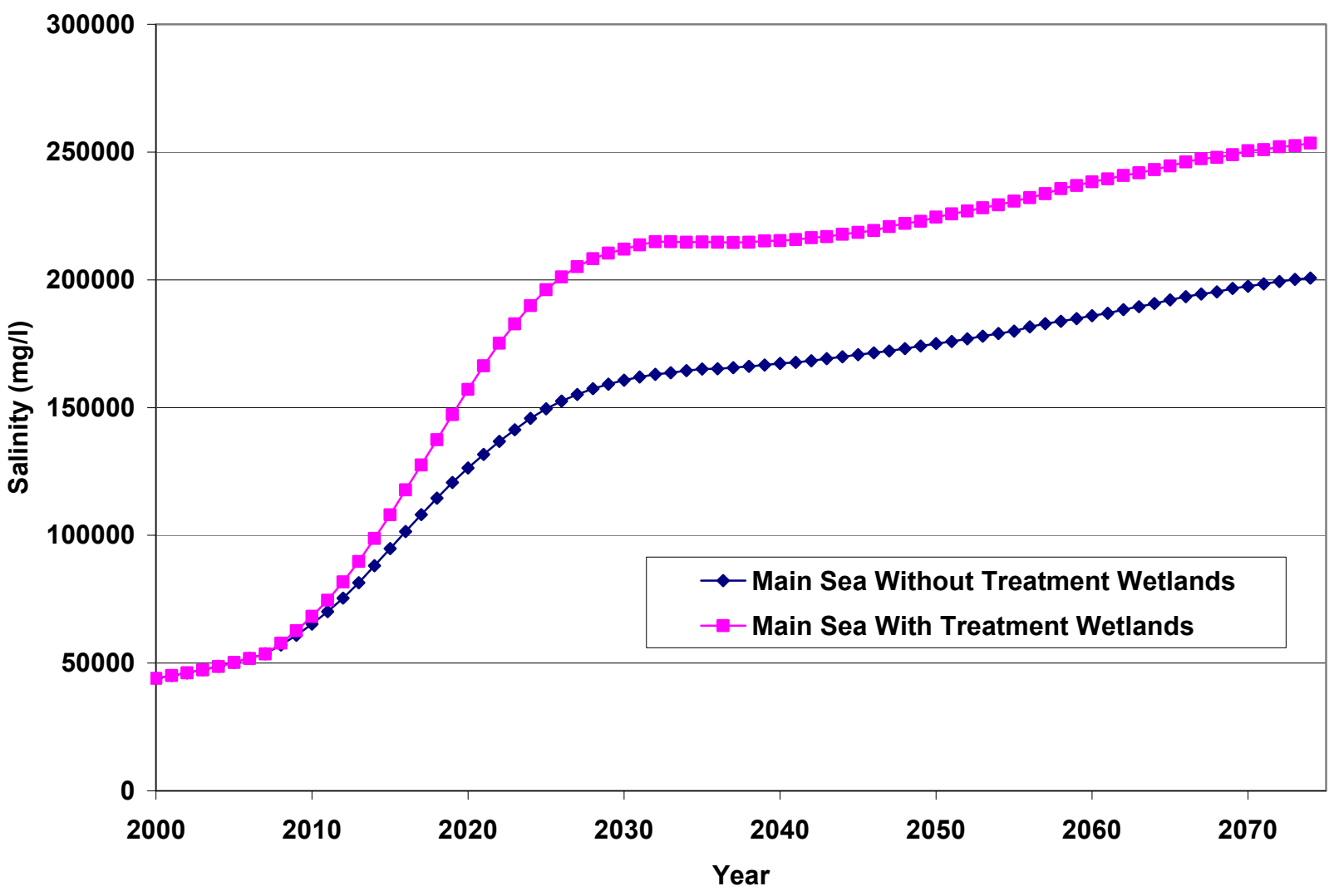
- Total N Removed = 34 %
- Total P Removed = 11 %

1/ Source: Kadlec, R.H., and R.L. Knight. 1996 *Treatment Wetlands*. Lewis Publishers, Boca Raton, FL.
2/ General observation of data collected at Imperial and Alamo Wetlands
3/ Personal communication from Jim Sartoris, USGS, Mid-continent Ecological Science Center – unpublished data

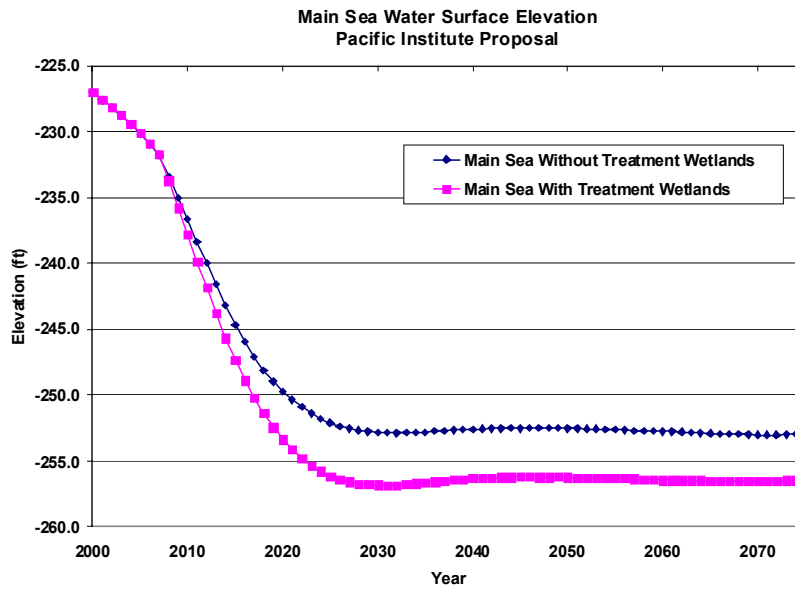
Main Sea Simulation Simulation Results

(Based on Application of the Bureau of Reclamation’s Salton Sea Accounting Model)

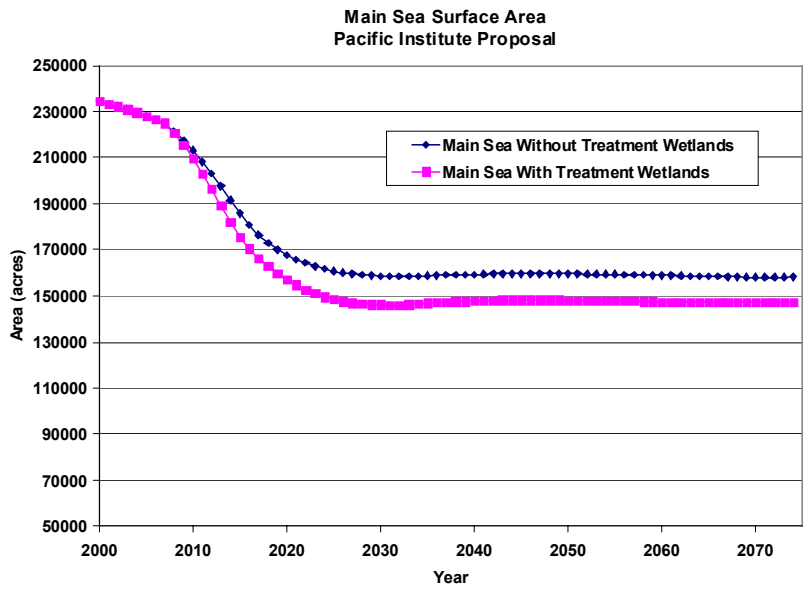
**Main Sea Salinity
Pacific Institute Proposal**



Main Sea Water Surface Elevation



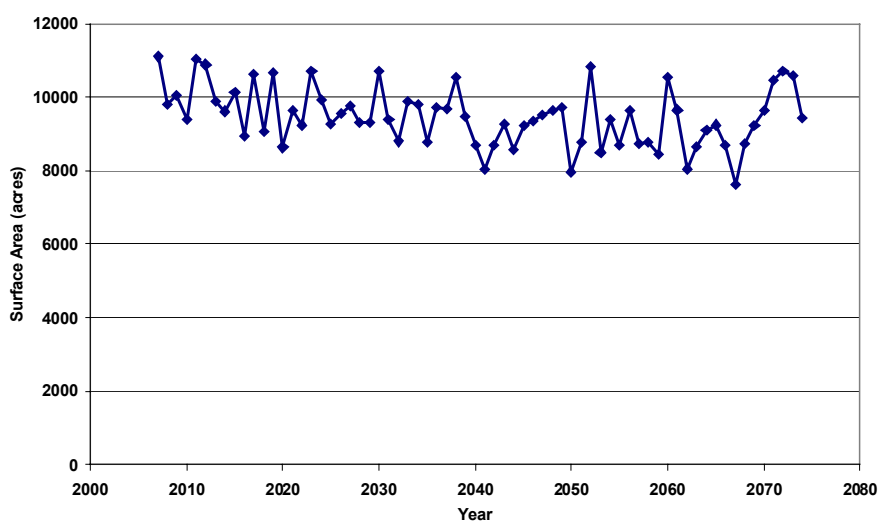
Main Sea Surface Area



South Impoundment Simulation Results

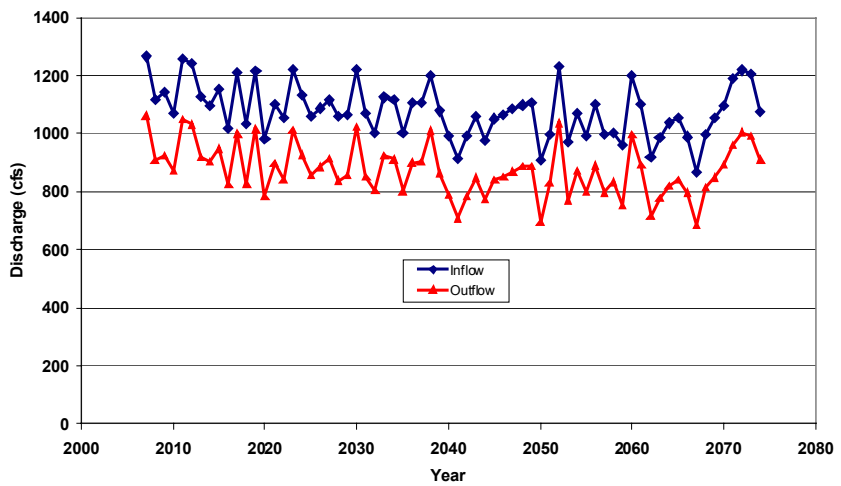
Wetlands Surface Area Requirements

TREATMENT WETLANDS SURFACE AREA

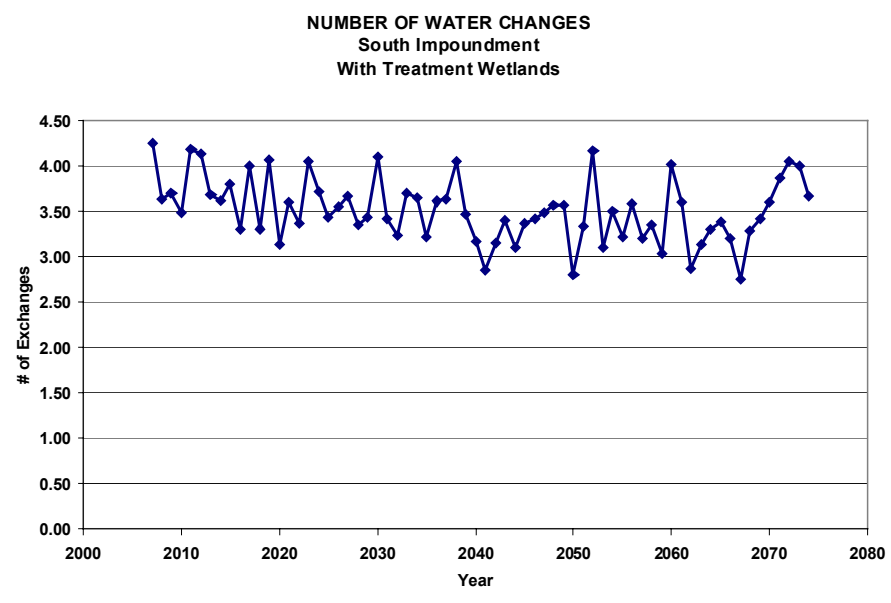


Inflows/Outflows: South Impoundment

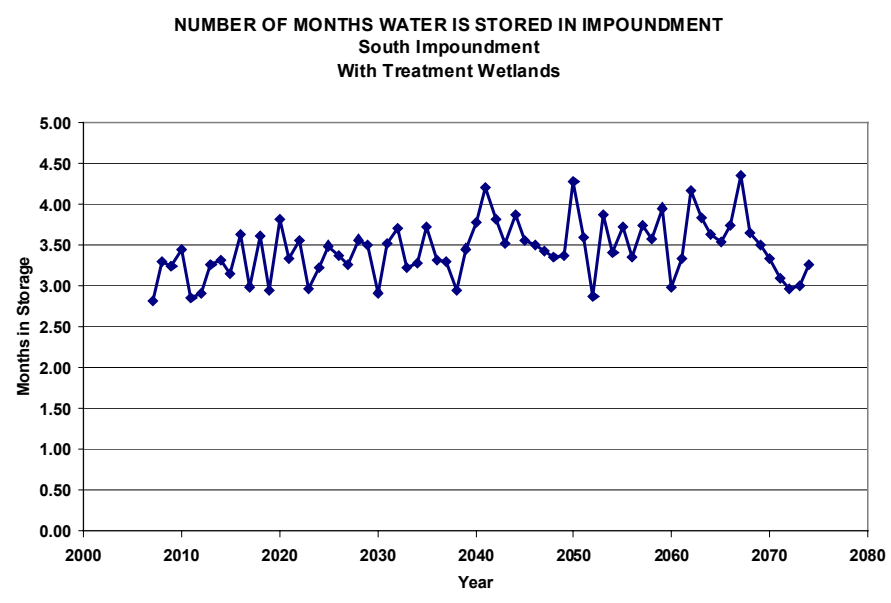
AVERAGE ANNUAL INFLOWS and OUTFLOWS
South Impoundment
With Treatment Wetlands



Water Exchanges: South Impoundment

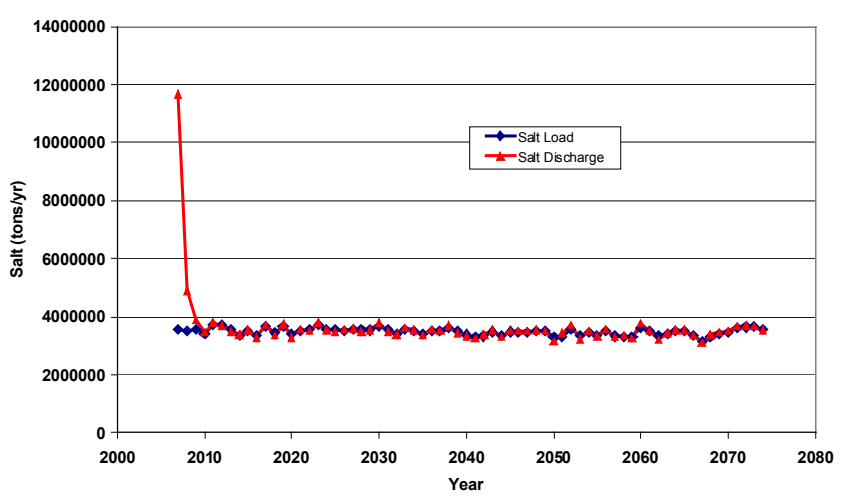


Months in Storage: South Impoundment



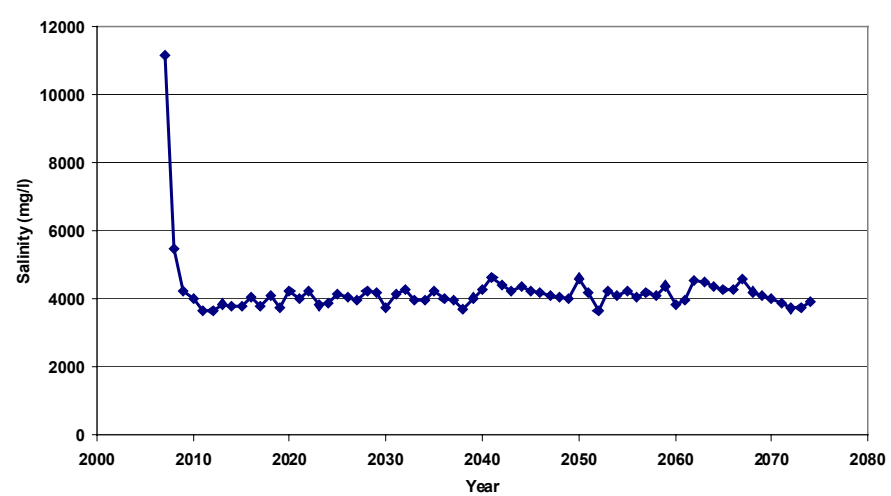
Salt Load and Discharge: S. Impound.

SALT LOAD AND DISCHARGE
South Impoundment
With Treatment Wetlands



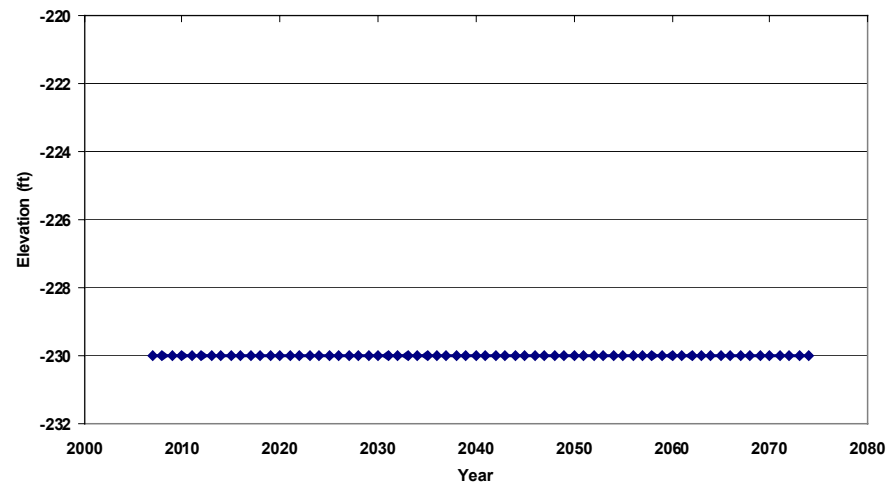
Salinity: South Impoundment

ANNUAL ENDING SALINITY
South Impoundment
With Treatment Wetlands



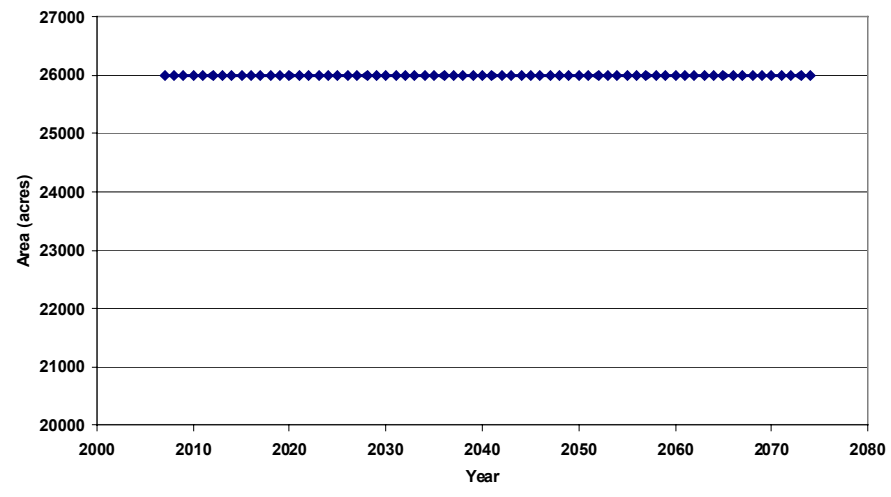
Elevation: South Impoundment

ANNUAL ENDING ELEVATION
South Impoundment
With Treatment Wetlands



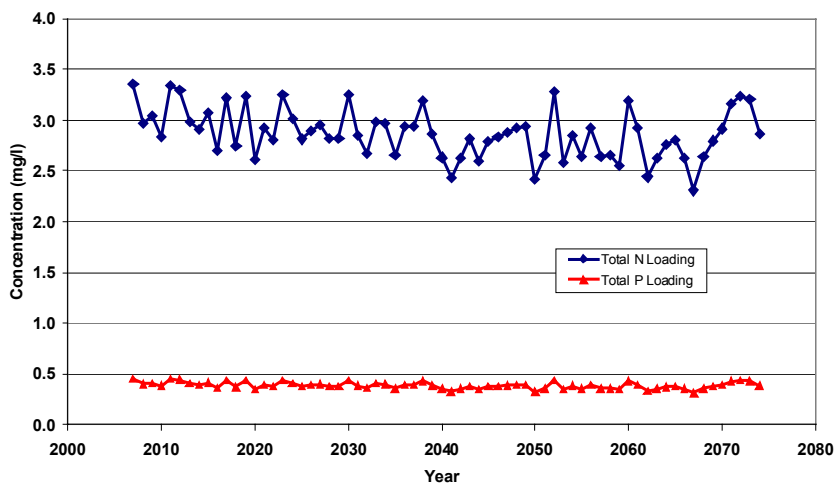
Surface Area: South Impoundment

ANNUAL ENDING SURFACE AREA
South Impoundment
With Treatment Wetlands



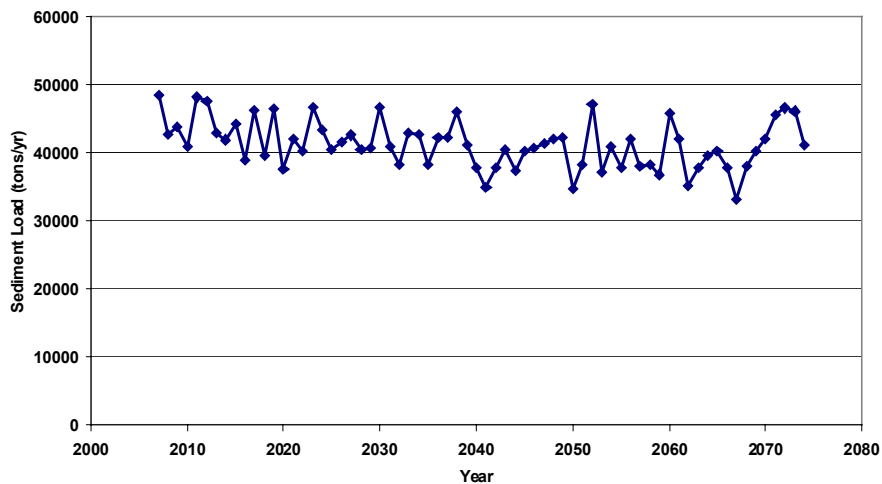
Nutrient Load: South Impoundment

NUTRIENT LOADING FROM RIVERS
 South Impoundment
 With Treatment Wetlands



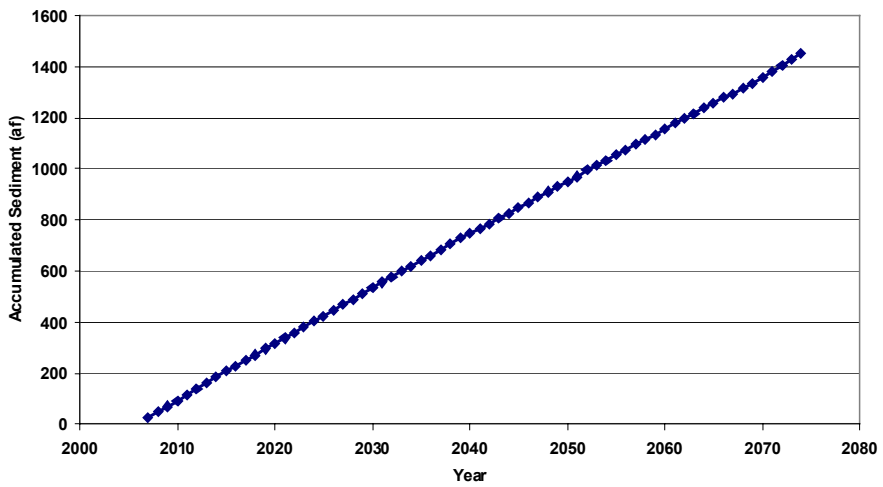
Sediment Load: South Impoundment

SEDIMENT LOAD
 South Impoundment
 With Treatment Wetlands



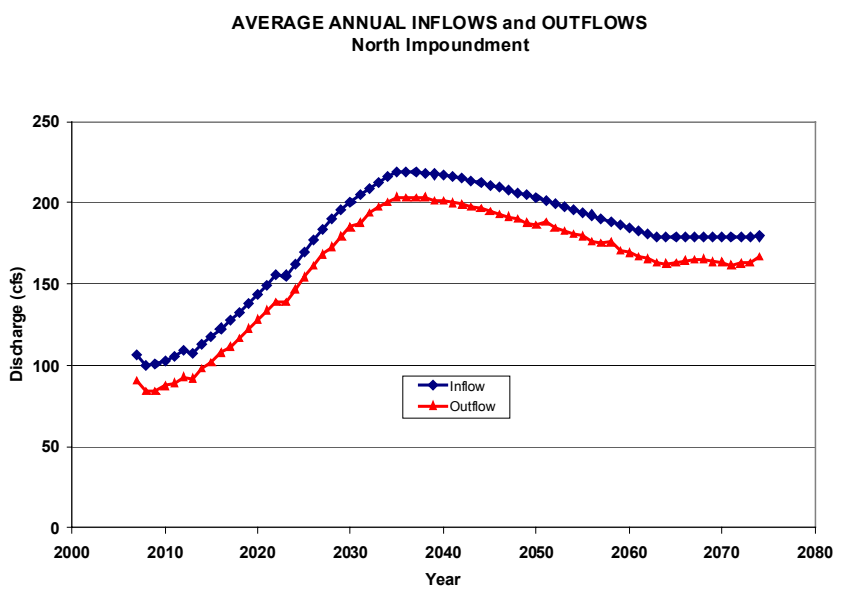
Sediment Trapped: S. Impoundment

ACCUMULATED SEDIMENT
South Impoundment
With Treatment Wetlands

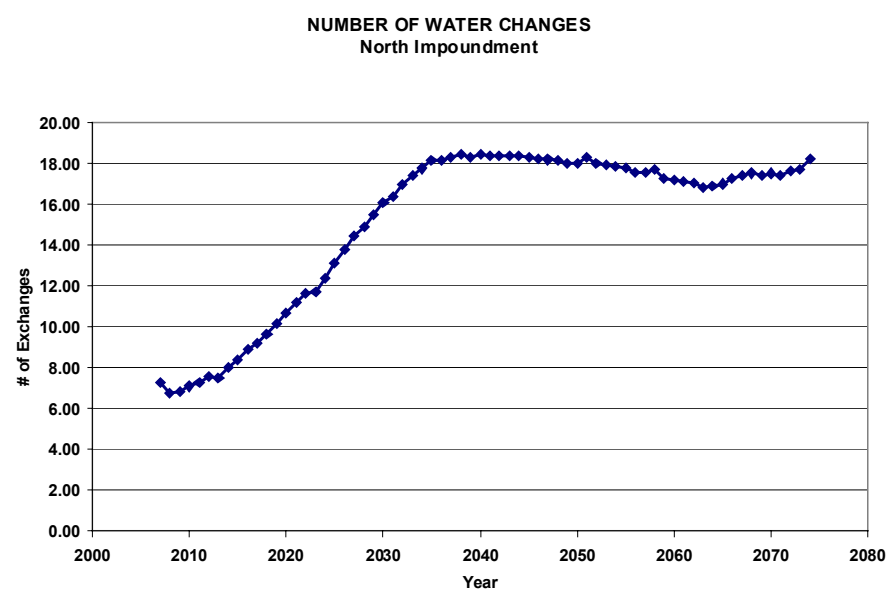


North Impoundment Simulation Results

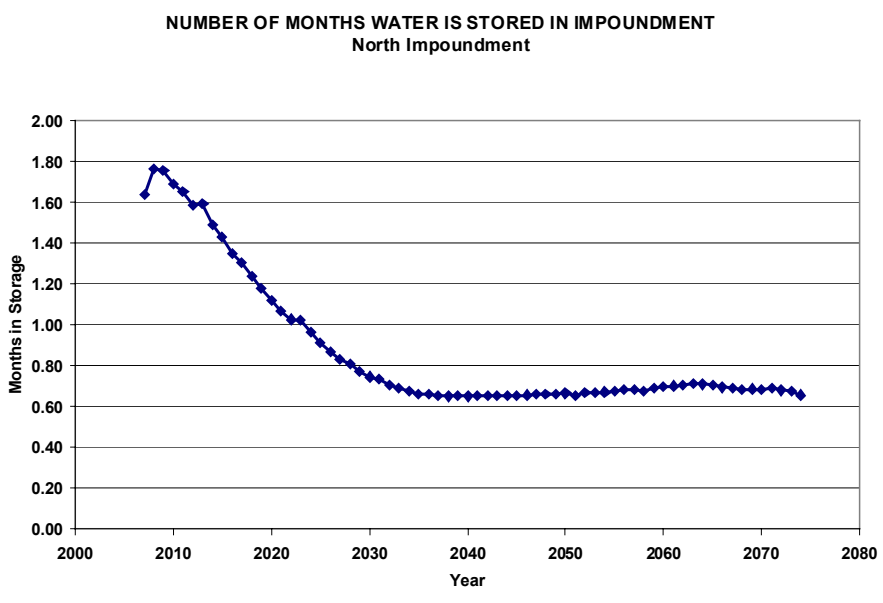
Inflows/Outflows: North Impoundment



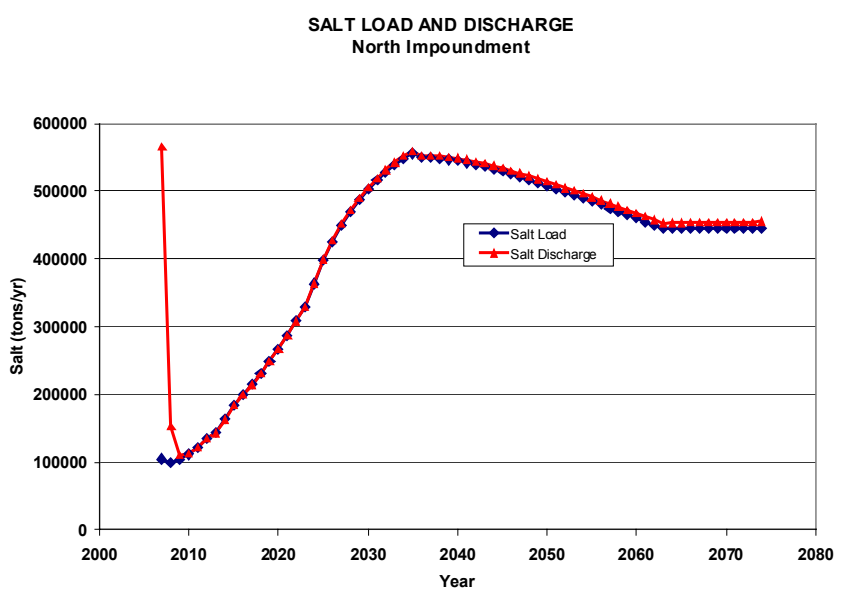
Water Exchanges: North Impoundment



Months in Storage:North Impoundment

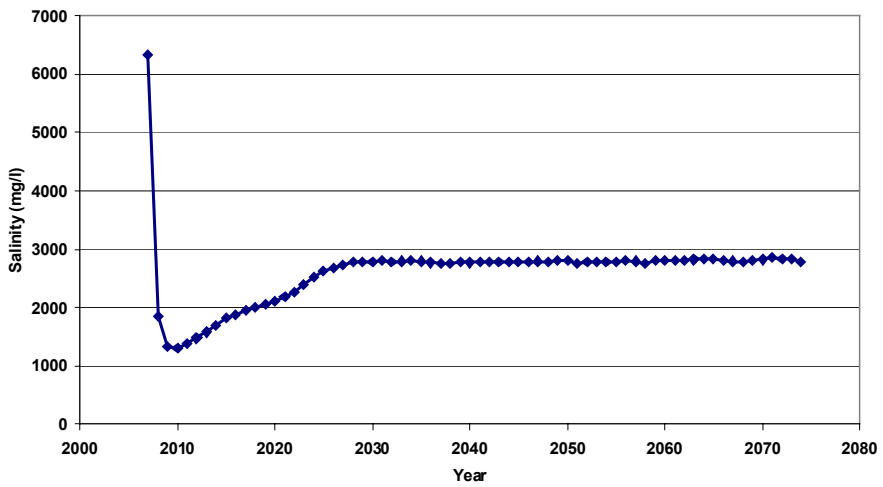


Salt Load and Discharge: N. Impound.



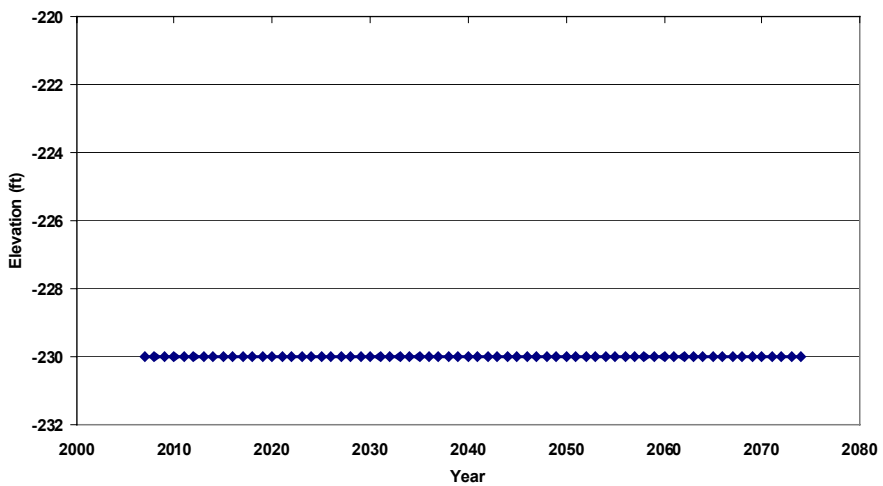
Salinity: North Impoundment

ANNUAL ENDING SALINITY
North Impoundment



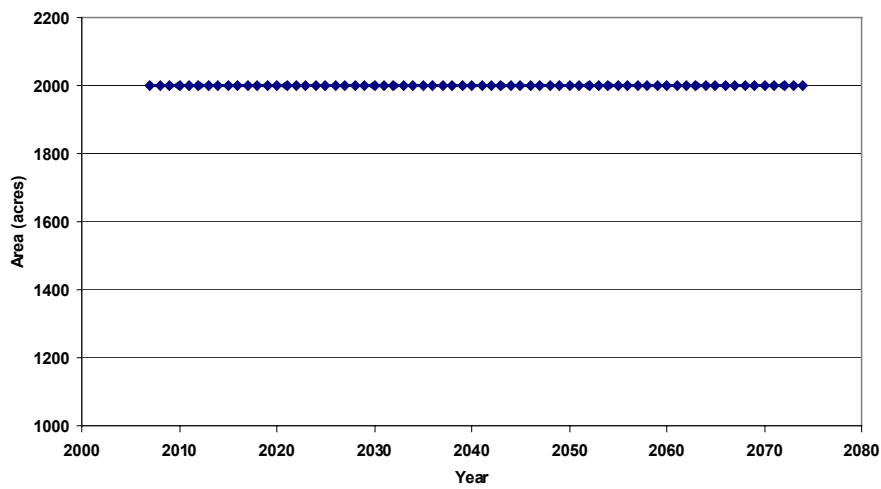
Elevation: North Impoundment

ANNUAL ENDING ELEVATION
North Impoundment



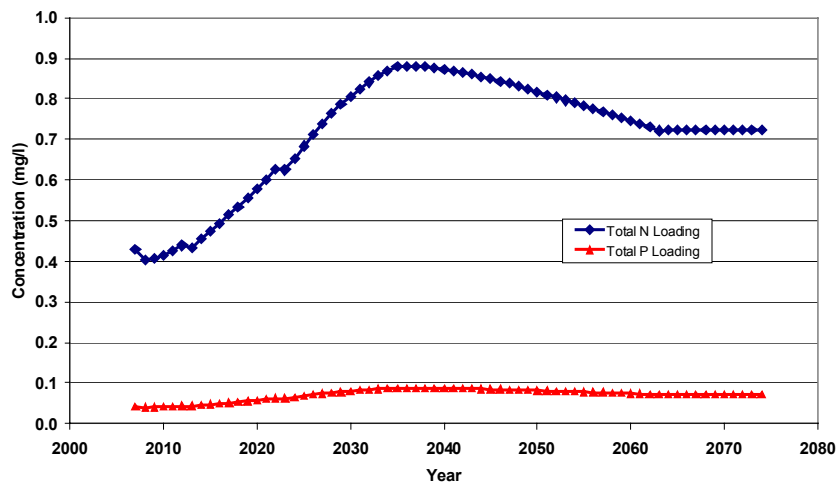
Surface Area: North Impoundment

ANNUAL ENDING SURFACE AREA
North Impoundment

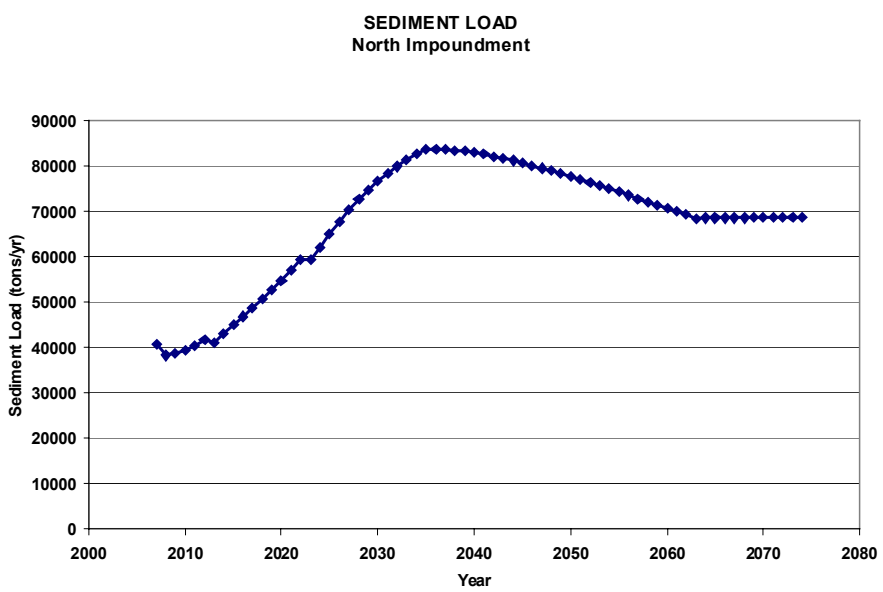


Nutrient Load: North Impoundment

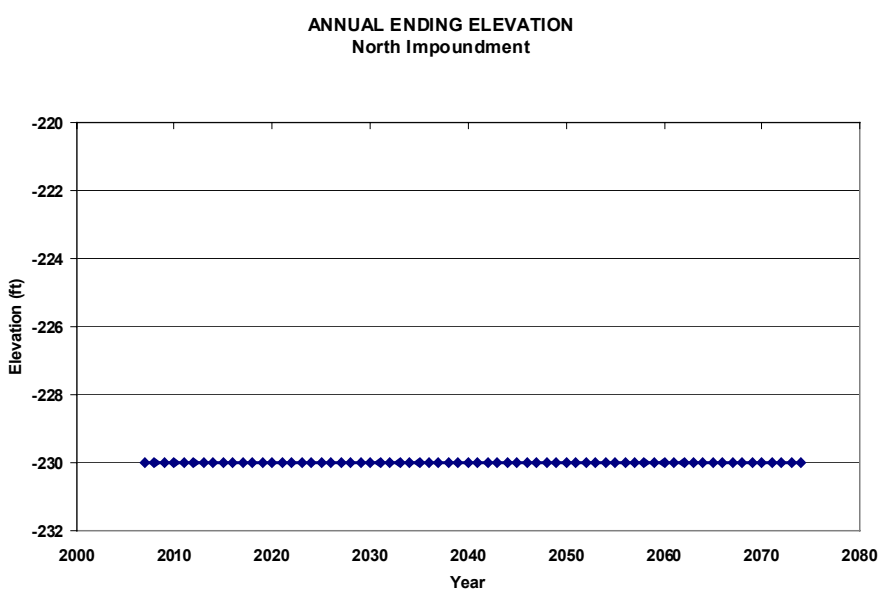
NUTRIENT LOADING FROM RIVERS
North Impoundment



Sediment Load: North Impoundment

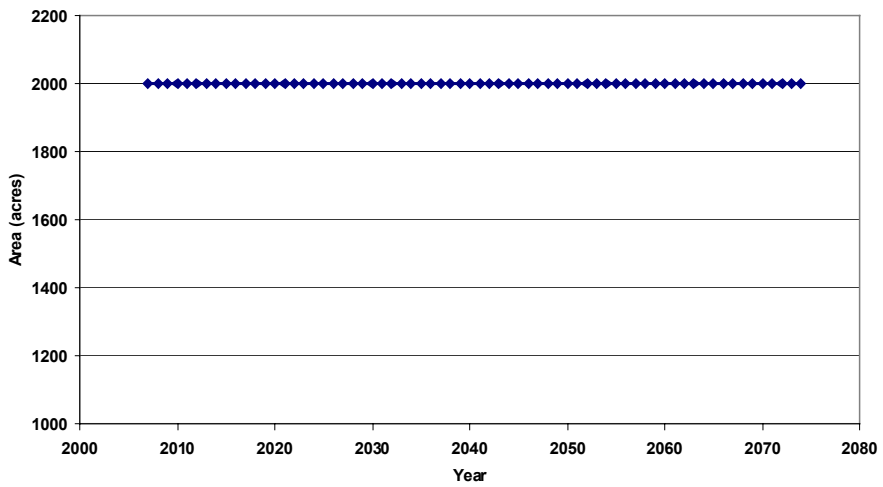


Elevation: North Impoundment



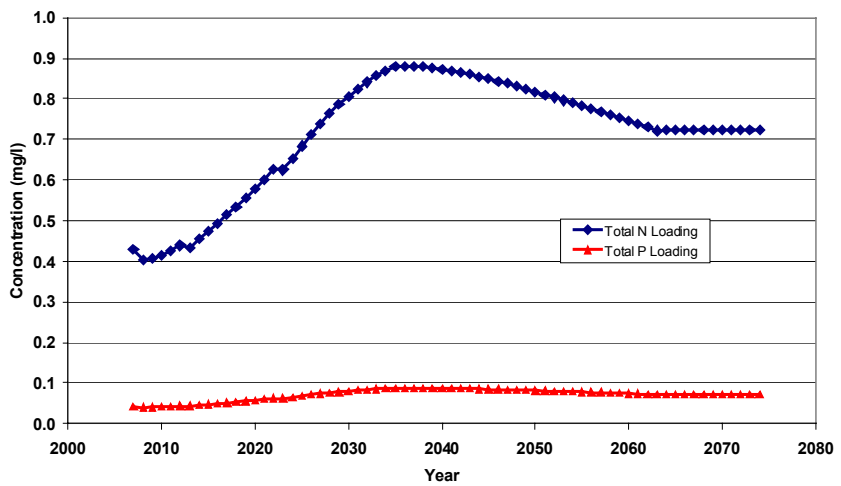
Surface Area: North Impoundment

ANNUAL ENDING SURFACE AREA
North Impoundment

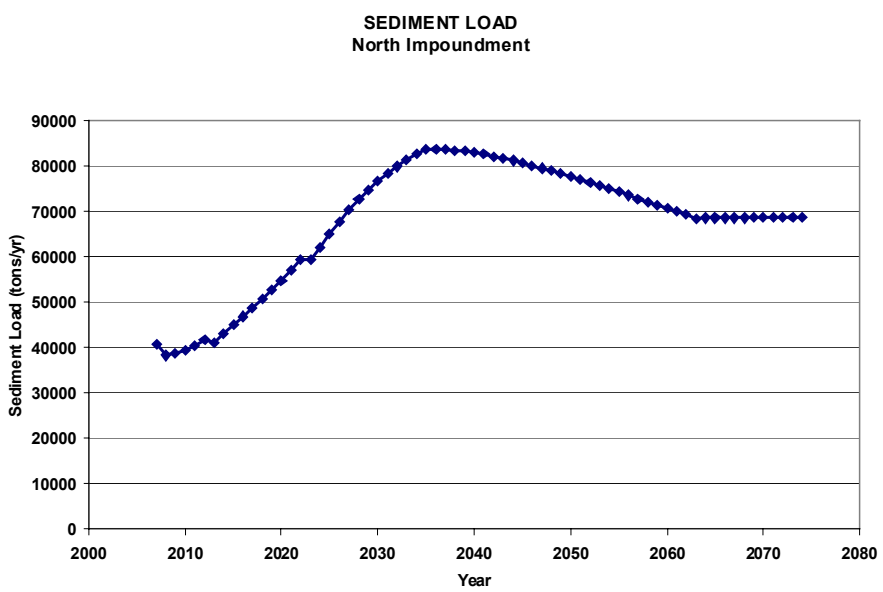


Nutrient Load: North Impoundment

NUTRIENT LOADING FROM RIVERS
North Impoundment



Sediment Load: North Impoundment



Sediment Trapped: N. Impoundment

