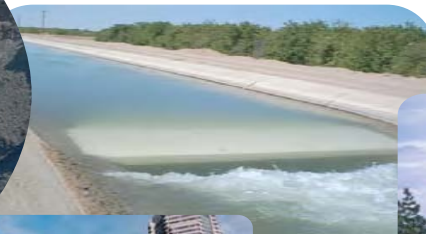


# RECLAMATION

## *Managing Water in the West*

### Colorado River Accounting and Water Use Report Arizona, California, and Nevada

*Calendar Year 2007*



U.S. Department Of the Interior  
Bureau of Reclamation  
Lower Colorado Region

## **Mission Statements**

The mission of the Department of the Interior is to protect and provide access to our Nation's natural and cultural heritage and honor our trust responsibilities to Indian Tribes and our commitments to island communities.

The mission of the Bureau of Reclamation is to manage, develop, and protect water and related resources in an environmentally and economically sound manner in the interest of the American public.

# **Colorado River Accounting and Water Use Report Arizona, California, and Nevada**

## **Calendar Year 2007**

*Prepared by*

**Lower Colorado Regional Office  
Boulder Canyon Operations Office**

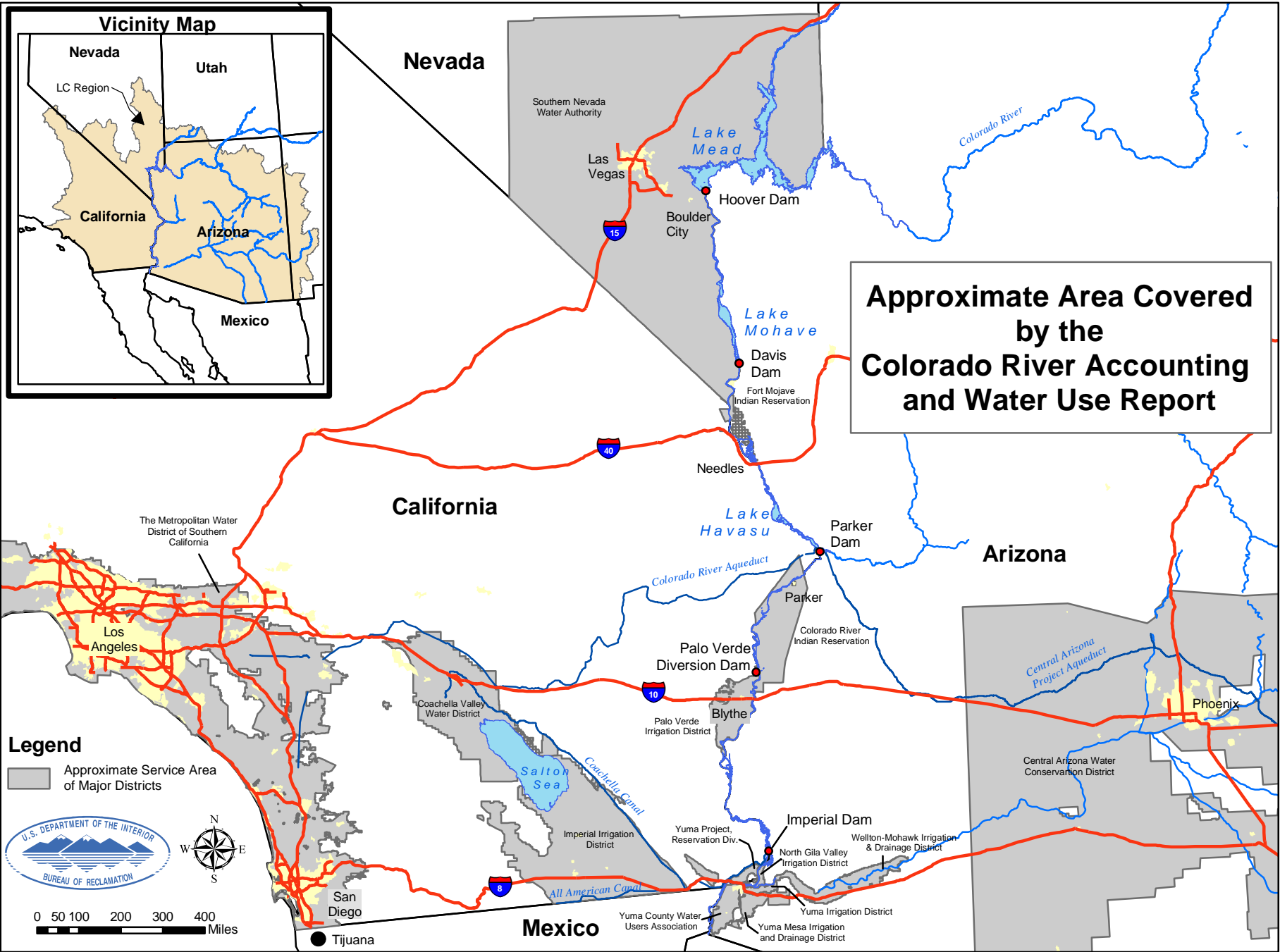
**Paul Matuska, BCOO-4222  
PO Box 61470  
Boulder City, NV 89006-1470**

**Phone: 702-293-8164  
FAX: 702-293-8042  
Email: [patuska@lc.usbr.gov](mailto:patuska@lc.usbr.gov)**



**U.S. Department of the Interior  
Bureau of Reclamation  
Lower Colorado Region  
Boulder Canyon Operations Office  
Water Conservation & Accounting Group**

**December 2008**



## TABLE OF CONTENTS

Location Map _____	Frontispiece
Acronyms and Abbreviated Terms _____	1
Summary _____	2
Reservoir Contents _____	3
<b>Compilation of Records in Accordance with Article V of the Consolidated Decree of the United States Supreme Court in <i>Arizona v. California</i>, 547 U.S. 150 (2006) (Consolidated Decree)</b> _____	4
V (A) Records of Releases of Water Through Regulatory Structures Controlled by the United States _____	5
V (B) Records of Diversions, Return Flows, and Consumptive Use _____	6
Arizona Users Reporting Monthly _____	7
Arizona Supplemental Tabulation _____	12
California Users Reporting Monthly _____	14
California Supplemental Tabulation _____	16
Nevada Users Reporting Monthly _____	18
V(C) Records of Water Ordered but not Diverted _____	20
Arizona _____	21
California _____	23
V (D) Records of Deliveries of Water to Mexico _____	25
V (E) Records of Diversions and Use for Gila National Forest _____	26
<b>Information Supplemental to the Consolidated Decree</b> _____	27
Interstate Banking within the States of Arizona, California, and Nevada _____	28
Inadvertent Overruns and Paybacks, within the States of Arizona, California, and Nevada _____	30
Summary of Water Availability and Use by State _____	35
Lower Colorado Water Supply Project _____	37
Conservation, Transfer, and Exchange Agreements _____	39
Water Subject to Temporary Re-regulation _____	46
Intentionally Created Surplus _____	48
Collection of Significant Documents _____	50

## Acronyms and Abbreviated Terms

These acronyms and abbreviations will be found in the text, footnotes, and headings within this document.

AAC	All-American Canal	Ftns	Footnotes (used as a column heading)
af	acre-feet, unit of water measurement	FYIR	Fort Yuma Indian Reservation
ADP	Arizona diesel pump	GGMC	Gila Gravity Main Canal
ADW	Arizona diesel well	ICUA	intentionally created unused apportionment
AEP	Arizona electric pump	I.D.D.	irrigation and drainage district
AEW	Arizona electric well	IBWC	International Boundary and Water Commission
ALTSC	accumulated long term storage credit	ICS	Intentionally Created Surplus
AOP	Annual Operating Plan	IID	Imperial Irrigation District
APS	Arizona Public Service	IOPP	Inadvertent Overrun and Payback Policy
ASLD	Arizona State Land Department	ISG	Colorado River Interim Surplus Guidelines
Assn.	Association	IUS	Interstate Underground Storage credits
AWBA	Arizona Water Banking Authority	kaf	Kilo (thousand) acre-feet
BLM	Bureau of Land Management	LCWSP	Lower Colorado Water Supply Project
BOY	beginning of year	LHFO	Lake Havasu Field Office (BLM)
CAWCD	Central Arizona Water Conservation District	LLC	Limited Liability Company
CCLP	Coachella Canal Lining Project	LTD	Limited
CDP	California diesel pump	LTSC	Long Term Storage Credit
CDW	California diesel well	MWD	The Metropolitan Water District of Southern California
CDEW	California diesel electric well	MOD	Main Outlet Drain
CEP	California electric pump	MODE	Main Outlet Drain Extension
CEW	California electric well	MEAS.	Measured (as in Measured Returns)
CFR	Code of Federal Regulations	M&I	municipal and industrial
CRBC	Colorado River Board of California	NIB	Northerly International Boundary
CRCN	Colorado River Commission of Nevada	PG & E	Pacific Gas and Electric Company
CRIT	Colorado River Indian Tribes	PVID	Palo Verde Irrigation District
CRWDA	Colorado River Water Delivery Agreement	QSA	Quantification Settlement Agreement
CU	consumptive use	SCE	Southern California Edison Company
CVWD	Coachella Valley Water District	SIRA	Storage and Interstate Release Agreement
CY	calendar year	SDCWA	San Diego County Water Authority
Diff.	difference	SLRSP	San Luis Rey Settlement Parties
Dist.	district	SNWA	Southern Nevada Water Authority
Div	diversion	BR	Bureau of Reclamation
DPOC	drainage pump outlet channel	USGS	United States Geological Survey
ET	evapotranspiration	UNMEAS	unmeasured (e.g. unmeasured returns)
EOY	end of year	YAO	Yuma Area Office (Reclamation)
FEIS	Final Environmental Impact Statement	YFO	Yuma Field Office (BLM)

S U M M A R Y  
 COLORADO RIVER ACCOUNTING AND WATER USE REPORT  
 CALENDAR YEAR 2007

		12/22/08	(ACRE-FEET)													
		Ftnts	JAN	FEB	MAR	APR	MAY	JUN	JUL	AUG	SEP	OCT	NOV	DEC	TOTAL	
<b>LOWER DIVISION STATES CONSUMPTIVE USE SUMMARY</b>																
ARIZONA			180,650	191,544	275,545	296,335	308,454	289,276	237,678	162,590	243,182	257,817	202,237	138,013	2,783,323	
CALIFORNIA			227,318	275,839	359,914	457,405	518,079	482,430	497,339	476,744	408,129	298,273	211,888	157,337	4,370,695	
NEVADA			12,817	12,590	21,686	24,524	34,330	35,404	38,834	33,429	23,772	26,316	19,292	17,318	300,312	
TOTAL CONSUMPTIVE USE, LOWER DIVISION STATES			420,785	479,973	657,145	778,264	860,863	807,110	773,851	672,763	675,083	582,406	433,417	312,668	7,454,330	
TO MEXICO IN SATISFACTION OF TREATY		1/	121,599	149,057	202,851	195,427	108,570	117,676	122,860	95,471	89,307	74,721	102,966	119,495	1,500,000	
WATER BYPASSED PURSUANT TO MINUTE NO. 242 OF THE IBWC			9,038	8,239	7,985	7,693	8,189	8,599	8,756	8,628	8,913	9,001	9,625	10,610	105,276	
TO MEXICO IN EXCESS OF TREATY			1,059	415	4	2,331	708	257	523	1,467	2,511	5,326	18	6,984	21,603	
TOTAL CU, LOWER DIVISION STATES AND DELIVERIES TO MEXICO		2/	552,481	637,684	867,985	983,715	978,330	933,642	905,990	778,329	775,814	671,454	546,026	449,757	9,081,209	
<b>LCWSP WELLFIELD PUMPING SUMMARY</b>																
		3/ NON-FEDERAL	0	0	79	482	497	689	653	625	601	682	622	657	5,588	
		3/ FEDERAL	0	0	6	35	36	49	47	45	43	49	45	47	401	
		TOTAL	0	0	85	517	533	738	700	670	644	731	667	704	5,989	
<b>RESERVOIR CONTENTS SUMMARY (Thousand Acre-Feet)</b>																
		<b>DEC 2006</b>	JAN	FEB	MAR	APR	MAY	JUN	JUL	AUG	SEP	OCT	NOV	DEC	<b>CHANGE</b>	
LOWER BASIN TOTAL STORAGE		4/	16,327	16,540	16,468	16,177	15,739	15,288	15,014	14,837	14,847	14,626	14,525	14,602	14,982	-1,345
LOWER BASIN STORAGE PLUS LAKE POWELL		5/	28,403	28,242	28,020	27,814	27,523	27,979	27,896	27,301	26,942	26,554	26,335	26,222	26,227	-2,176
PERCENTAGE OF ACTIVE STORAGE, LOWER BASIN PLUS POWELL			54.0%	53.7%	53.2%	52.9%	52.3%	53.2%	53.0%	51.9%	51.2%	50.5%	50.0%	49.8%	49.8%	
<b>OFFSTREAM INTERSTATE STORAGE SUMMARY</b>																
			<b>B.O.Y. Balance</b>	<b>2007 Storage</b>		<b>2007 Recovered</b>		<b>E.O.Y. Balance</b>								
WATER STORED IN AZ FOR THE BENEFIT OF NV & CA		6/	NEVADA	412,634	114,886	0	0	527,520								
			CALIFORNIA	80,909	0	16,804	64,105									
WATER STORED IN CA BY MWD FOR THE BENEFIT OF NV		7/	NEVADA	25,000	0	0	25,000									

Note: Each section of this report and each division within a section, has an independant sequence of footnotes.

**Footnotes:**

- 1/ Deliveries to Mexico to meet treaty obligations.
- 2/ Sum of Total Consumptive Use in the Lower Division States, Deliveries to Mexico in Satisfaction of Treaty, Water Bypassed Pursuant of the IBWC Minute No. 242 and water passing to Mexico in excess of treaty obligations.
- 3/ Pumpage of Lower Colorado Water Supply Project wellfield to offset certain Colorado River water use in California.
- 4/ Sum of End of Month storage in Lakes Mead, Mohave and Havasu (Lower Basin).
- 5/ Sum of End of Month storage in Lakes Powell (Upper Basin), Mead, Mohave and Havasu (Lower Basin).
- 6/ Final verified total of Long-Term Storage Credits as reported by the Arizona Water Banking Authority.
- 7/ In 2004 MWD, SNWA and the Secretary of the Interior entered into a Storage and Interstate Release Agreement to allow MWD to divert and store water for the benefit of SNWA.

RESERVOIR CONTENTS  
MONTHLY STORAGE CONTENTS OF THE COLORADO RIVER SYSTEM RESERVOIRS  
CALENDAR YEAR 2007

	12/22/08	(THOUSAND ACRE-FEET)													CY CHANGE	
	Ftnts	Dec-06	JAN	FEB	MAR	APR	MAY	JUN	JUL	AUG	SEP	OCT	NOV	DEC		
END OF MONTH ACTIVE CONTENTS:																
LAKE POWELL		12,076	11,703	11,552	11,637	11,784	12,691	12,882	12,465	12,095	11,929	11,809	11,620	11,246	-830	
PERCENTAGE OF POWELL ACTIVE STORAGE	3/	49.7%	48.1%	47.5%	47.8%	48.4%	52.2%	53.0%	51.2%	49.7%	49.0%	48.6%	47.8%	46.2%		
LAKE MEAD		14,164	14,309	14,288	13,930	13,426	12,963	12,735	12,554	12,578	12,505	12,494	12,520	12,860	-1,304	
LAKE MOHAVE		1,579	1,656	1,638	1,685	1,742	1,734	1,693	1,696	1,684	1,545	1,465	1,509	1,565	-14	
LAKE HAVASU		584	575	542	562	571	591	586	587	585	576	566	573	557	-27	
STORAGE IN LOWER BASIN	4/	16,327	16,540	16,468	16,177	15,739	15,288	15,014	14,837	14,847	14,626	14,525	14,602	14,982	-1,345	
PERCENTAGE OF CO. RIVER ACTIVE STORAGE IN THE LOWER BASIN	5/	57.7%	58.4%	58.2%	57.2%	55.6%	54.0%	53.0%	52.4%	52.5%	51.7%	51.3%	51.6%	52.9%		
LOWER BASIN STORAGE PLUS LAKE POWELL	6/	28,403	28,242	28,020	27,814	27,523	27,979	27,896	27,301	26,942	26,554	26,335	26,222	26,227	-2,176	
PERCENTAGE OF ACTIVE STORAGE, LOWER BASIN PLUS POWELL	7/	54.0%	53.7%	53.2%	52.9%	52.3%	53.2%	53.0%	51.9%	51.2%	50.5%	50.0%	49.8%	49.8%		
TOTAL SYSTEM STORAGE	8/	33,972	33,693	33,421	33,356	33,124	33,690	33,776	33,102	32,657	32,130	31,846	31,651	31,589	-2,383	
PERCENTAGE OF TOTAL SYSTEM STORAGE	9/	57.2%	56.7%	56.3%	56.2%	55.8%	56.7%	56.9%	55.7%	55.0%	54.1%	53.6%	53.3%	53.2%		

Note: For purposes of this tabulation, the term "active storage" is equivalent to live storage less the Exclusive Flood Control Space, and refers to the volume of water that can be delivered downstream via gravity flow.

**Footnotes:**

- 1/ Values may differ from figures shown due to rounding and being displayed to the nearest thousand acre feet.
- 2/ CY change is the difference in end of month storage between December of the previous year and December of the reporting year.  
A positive value represents an increase in water in storage, and a negative value indicates a decrease in water in storage.
- 3/ Percentage of total active storage capacity available in Lake Powell. Based on total active storage of 24,322,000 af.
- 4/ The sum of end-of-month storage in Lakes Mead, Mohave and Havasu.
- 5/ The percentage of available active storage capacity held in the Lower Basin (Lakes Mead, Mohave and Havasu). Based on active storage of 28,306,000 af.
- 6/ The sum of end-of-month storage in Lakes Powell (Upper Basin), Mead, Mohave and Havasu (Lower Basin).
- 7/ The percentage of available total active storage capacity held in Lakes Powell (Upper Basin), Mead, Mohave and Havasu (Lower Basin). Based on total active storage of 52,628,000 af.
- 8/ Total end-of-month system storage, includes USBR reservoirs in Upper and Lower basins of the Colorado River.
- 9/ The percentage of total end-of-month system storage. This includes Lakes Powell, Navajo, Crystal, Morrow Point, Blue Mesa, Flaming Gorge, Fontenelle (Upper Basin), Mead, Mohave and Havasu (Lower Basin). Based on total active system storage of 59,383,125 af.



**COMPILATION OF RECORDS IN ACCORDANCE WITH ARTICLE V  
OF THE CONSOLIDATED DECREE OF THE UNITED STATES  
SUPREME COURT IN *ARIZONA V. CALIFORNIA*, 547 U.S. 150 (2006)**

V. The United States shall prepare and maintain, or provide for the preparation and maintenance of, and shall make available, annually and at such shorter intervals as the Secretary of the Interior shall deem necessary or advisable, for inspection by interested persons at all reasonable times and at a reasonable place or places, complete, detailed and accurate records of:

(A) Releases of water through regulatory structures controlled by the United States;

(B) Diversions of water from the mainstream, return flow of such water to the stream as is available for consumptive use in the United States or in satisfaction of the Mexican Treaty obligation, and consumptive use of such water. These quantities shall be stated separately as to each diverter from the mainstream, each point of diversion, and each of the States of Arizona, California and Nevada;

(C) Releases of mainstream water pursuant to orders therefor but not diverted by the party ordering the same, and the quantity of such water delivered to Mexico in satisfaction of the Mexican Treaty or diverted by others in satisfaction of rights decreed herein. These quantities shall be stated separately as to each diverter from the mainstream, each point of diversion, and each of the States of Arizona, California and Nevada;

(D) Deliveries to Mexico of water in satisfaction of the obligations of Part III of the Treaty of February 3, 1944, and, separately stated, water passing to Mexico in excess of treaty requirements;

(E) Diversions of water from the mainstream of the Gila and San Francisco Rivers and the consumptive use of such water, for the benefit of the Gila National Forest.

**RECORDS OF RELEASES OF WATER THROUGH  
REGULATORY STRUCTURES IN ACCORDANCE WITH  
ARTICLE V (A) OF THE CONSOLIDATED DECREE OF THE UNITED STATES  
SUPREME COURT IN ARIZONA V. CALIFORNIA, 547 U.S. 150 (2006)**

The following tabulation for calendar year 2007 shows the final records for release of water through regulatory structures controlled by the United States. Releases from Glen Canyon and Hoover Dams are measured and reported by Reclamation. The Davis, Parker, Palo Verde, Imperial, and Laguna Dams records of release are furnished by the U.S.G.S. and are based upon measurements at or below the structures.

The record of river flow through Headgate Rock Dam was computed using the record of flow at the gaging station "Colorado River below Parker Dam, Arizona-California," and deducting from it the record of flow at the gaging station "Diversion for Colorado River Indian Reservation Main Canal near Parker, Arizona" measured at Headgate Rock Dam.

CALENDAR YEAR 2007

STRUCTURE	12/22/08 Ftns	(ACRE-FEET)												TOTAL
		JAN	FEB	MAR	APR	MAY	JUN	JUL	AUG	SEP	OCT	NOV	DEC	
GLEN CANYON DAM		800,273	604,476	601,911	600,346	601,358	801,473	804,024	803,962	603,738	600,927	603,202	802,609	8,228,299
HOOVER DAM		638,558	646,851	970,104	1,092,869	1,025,751	957,792	950,120	802,855	655,805	569,752	575,056	476,597	9,362,110
DAVIS DAM		562,600	675,700	942,000	1,058,000	1,054,000	1,025,000	970,700	825,700	819,800	673,000	546,200	416,400	9,569,100
PARKER DAM		337,300	425,900	656,500	738,700	719,900	733,800	765,800	621,700	547,100	442,900	322,500	250,800	6,562,900
HEADGATE ROCK DAM	1/	310,890	393,610	614,220	674,160	650,020	663,880	692,570	550,740	490,050	402,020	294,340	225,510	5,962,010
PALO VERDE DAM		274,500	349,900	537,000	589,300	525,200	517,300	550,800	437,700	399,400	368,200	273,400	221,600	5,044,300
IMPERIAL DAM	2/	29,520	16,500	42,800	33,080	50,950	30,150	28,150	36,560	32,280	26,300	23,500	35,600	385,390
DIVERSION TO MITTRY LAKE FROM GILA MAIN CANAL		623	604	787	801	530	709	1,120	711	686	749	570	332	8,222
SUM IMPERIAL DAM + DIVERSION TO MITTRY LAKE		30,143	17,104	43,587	33,881	51,480	30,859	29,270	37,271	32,966	27,049	24,070	35,932	393,612
LAGUNA DAM		26,690	19,090	46,650	31,100	38,060	28,120	25,310	32,250	27,820	26,130	21,480	30,770	353,470

**Note:** All data is supplied by the USGS with the exception of the releases from Glen Canyon Dam and Hoover Dam, which are provided by the USBR.

**Footnotes:**

1/ Computed as Parker Dam release less diversion at Headgate Rock Dam.

2/ Represents flow below Imperial Dam, does not include diversions through the All American Canal and the Gila Gravity Main Canal.

## **RECORDS OF DIVERSIONS, RETURN FLOWS AND CONSUMPTIVE USE IN ACCORDANCE WITH ARTICLE V (B) OF THE CONSOLIDATED DECREE OF THE UNITED STATES SUPREME COURT IN ARIZONA V. CALIFORNIA, 547 U.S. 150 (2006)**

The following tabulations for calendar year 2007 show final records of diversions of water from the mainstream of the Colorado River, return flow of such water to the mainstream, and the consumptive use of such water in each state. The records were furnished by the U.S. Geological Survey (USGS), International Boundary and Water Commission, Bureau of Indian Affairs, Reclamation, National Park Service, U.S. Fish and Wildlife Service, and water user agencies. Diversions from the Topock Marsh Inlet Canal, All-American Canal and Gila Gravity Main Canal at Imperial Dam, were assigned to each user by adding each user's proportional share of the total canal losses to the delivery taken by each user at its turnout from the canal.

The tabulations show quantities of water drawn by surface diversion from the mainstream of the Colorado River, pumped directly from the mainstream, or pumped from wells in the Colorado River aquifer. Diversions are listed in two separate tabulations for each state. The first tabulation lists water users whose diversions are typically measured and reported monthly or more frequently. Measured return flows to the mainstream, an estimate of unmeasured return flows to the mainstream and consumptive use are also listed for points of diversion and return when that information is available.

The second tabulation for Arizona and California, entitled "Supplemental Use Tabulation," shows quantities of water pumped from the mainstream or from wells in the Colorado River aquifer, where the amount of water diverted is reported by the USGS or the water user.

For USGS reported wells and pumps, the diversions are assumed to be equal to 6.25 acre-feet per irrigated acre of land per year. Unmeasured returns are computed by multiplying a users' diversion by an unmeasured return flow factor. Reclamation is continuing to refine estimates of unmeasured returns. No person or entity is entitled to divert or use Colorado River water without an entitlement. An entitlement is an authorization to beneficially use Colorado River water pursuant to: (1) a right decreed by the Supreme Court, (2) a contract with the United States through the Secretary of the Interior (Secretary), or (3) a Secretarial reservation of water. The diversions, return flows or consumptive uses tabulated in this report constitute the records required by Article V of the Consolidated Decree of the United States Supreme Court in *Arizona v. California*, 547 U.S 150 (2006). The listing of a use in this report should not be interpreted as an entitlement or an indication that the use is authorized. If you notice any error or omission, please report it to the contact person listed on the cover page.

Reclamation does not consider pumping of wells from the flood plain or the underlying aquifer downstream from the Northerly International Boundary (NIB) to be a diversion of Colorado River water. This policy is based on the following: the ground water can reasonably be assumed to be flowing towards Mexico and therefore, not to be flowing toward the Colorado River upstream of Mexico's point of diversion near NIB. As such, this water does not return to the river to be made "available for consumptive use in the United States or in satisfaction of the Mexican Treaty obligation." In accordance with this position, Reclamation has discontinued reporting these wells.

DIVERSIONS FROM MAINSTREAM-AVAILABLE RETURN FLOW  
AND CONSUMPTIVE USE OF SUCH WATER  
CALENDAR YEAR 2007  
STATE OF ARIZONA

12/22/08

(ACRE-FEET)

WATER USER	Ftrnts	JAN	FEB	MAR	APR	MAY	JUN	JUL	AUG	SEP	OCT	NOV	DEC	TOTAL 1/
LAKE MEAD NAT'L RECREATION, AZ. DIVERSIONS FROM LAKE MEAD (TEMPLE BAR)	DIVERSION	4	3	5	10	12	13	15	12	9	7	5	2	97
	MEAS. RETURNS	0	0	0	0	0	0	0	0	0	0	0	0	0
	UNMEAS. RETURNS	0	0	0	0	0	0	0	0	0	0	0	0	0
	CONSUMPTIVE USE	4	3	5	10	12	13	15	12	9	7	5	2	97
LAKE MEAD NAT'L RECREATION, AZ. DIVERSIONS FROM LAKE MOHAVE (KATHERINE, WILLOW BEACH)	DIVERSION	9	7	9	8	17	20	26	25	23	18	17	9	188
	MEAS. RETURNS	0	0	0	0	0	0	0	0	0	0	0	0	0
	UNMEAS. RETURNS	0	0	0	0	0	0	0	0	0	0	0	0	0
	CONSUMPTIVE USE	9	7	9	8	17	20	26	25	23	18	17	9	188
LOWER COLORADO RIVER DAMS PROJECT DIVERSION AT DAVIS DAM	DIVERSION	7	3	12	49	14	4	4	4	6	4	4	4	115
	MEAS. RETURNS	7	3	12	48	14	4	4	4	6	4	4	4	114
	UNMEAS. RETURNS	0	0	0	0	0	0	0	0	0	0	0	0	0
	CONSUMPTIVE USE	0	0	0	1	0	0	0	0	0	0	0	0	1
BULLHEAD CITY PUMPED FROM WELLS	DIVERSION	740	703	819	870	1,083	1,139	1,248	1,231	1,042	966	838	726	11,405
DIV. AT DAVIS DAM, MOHAVE CO. PARKS	DIVERSION	5	7	8	8	13	11	13	11	11	8	8	6	109
	MEAS. RETURNS	0	0	0	0	0	0	0	0	0	0	0	0	0
	UNMEAS. RETURNS	246	234	273	290	362	380	416	410	347	321	279	242	3,800
	CONSUMPTIVE USE	499	476	554	588	734	770	845	832	706	653	567	490	7,714
MOHAVE WATER CONSERVATION DIST. PUMPED FROM WELLS	DIVERSION	43	54	73	79	97	118	128	123	97	81	58	57	1,008
	MEAS. RETURNS	0	0	0	0	0	0	0	0	0	0	0	0	0
	UNMEAS. RETURNS	14	18	24	26	32	39	42	41	32	27	19	19	333
	CONSUMPTIVE USE	29	36	49	53	65	79	86	82	65	54	39	38	675
BROOKE WATER LLC. PUMPED FROM RIVER	DIVERSION	19	19	32	20	42	45	45	44	37	36	32	26	397
	MEAS. RETURNS	0	0	0	0	0	0	0	0	0	0	0	0	0
	UNMEAS. RETURNS	6	6	11	7	14	15	15	15	12	12	11	9	133
	CONSUMPTIVE USE	13	13	21	13	28	30	30	29	25	24	21	17	264
MOHAVE VALLEY I.D.D. PUMPED FROM WELLS	DIVERSION	1,297	2,290	2,724	4,056	3,472	3,678	3,693	3,932	4,527	2,251	1,964	1,586	35,470
	MEAS. RETURNS	0	0	0	0	0	0	0	0	0	0	0	0	0
	UNMEAS. RETURNS	597	1,053	1,253	1,866	1,597	1,692	1,699	1,809	2,082	1,035	903	730	16,316
	CONSUMPTIVE USE	700	1,237	1,471	2,190	1,875	1,986	1,994	2,123	2,445	1,216	1,061	856	19,154
FORT MOJAVE INDIAN RESERVATION PUMPED FROM RIVER	DIVERSION	3,200	3,797	5,059	5,121	9,689	10,219	8,943	7,756	6,588	5,387	3,313	843	69,915
PUMPED FROM TOPOCK MARSH INLET	DIVERSION	1	139	262	432	679	597	200	158	606	581	142	0	3,797
DELIVERED BY CITY OF NEEDLES	DIVERSION	2	2	2	3	3	4	5	4	3	3	2	2	35
	MEAS. RETURNS	0	0	0	0	0	0	0	0	0	0	0	0	0
	UNMEAS. RETURNS	1,473	1,811	2,449	2,556	4,771	4,977	4,208	3,642	3,311	2,747	1,590	389	33,924
	CONSUMPTIVE USE	1,730	2,127	2,874	3,000	5,600	5,843	4,940	4,276	3,886	3,224	1,867	456	39,823
GOLDEN SHORES WATER CONSERVATION DIST PUMPED FROM WELLS	DIVERSION	20	25	34	37	45	55	60	58	45	38	27	26	470
	MEAS. RETURNS	0	0	0	0	0	0	0	0	0	0	0	0	0
	UNMEAS. RETURNS	7	8	11	12	15	18	20	19	15	13	9	9	156
	CONSUMPTIVE USE	13	17	23	25	30	37	40	39	30	25	18	17	314
HAVASU NATIONAL WILDLIFE REFUGE TOPOCK MARSH INLET	DIVERSION	399	1,571	4,081	5,861	5,102	4,943	5,320	3,334	1,968	678	0	0	33,257
FARM DITCH	DIVERSION	96	406	1,074	1,293	1,050	1,019	766	542	622	261	0	0	7,129
PUMPED FROM ONE WELL IN FLOOD PLAIN	DIVERSION	10	11	15	17	20	25	27	26	20	17	12	12	212
	MEAS. RETURNS	0	0	2	9	0	1	0	0	0	0	0	0	12
	UNMEAS. RETURNS	444	1,749	4,548	6,303	5,431	5,268	5,379	3,434	2,297	841	11	11	35,716
	CONSUMPTIVE USE	61	239	620	859	741	718	734	468	313	115	1	1	4,870

DIVERSIONS FROM MAINSTREAM-AVAILABLE RETURN FLOW  
AND CONSUMPTIVE USE OF SUCH WATER  
CALENDAR YEAR 2007  
STATE OF ARIZONA

		12/22/08	(ACRE-FEET)												
WATER USER	Ftrnts		JAN	FEB	MAR	APR	MAY	JUN	JUL	AUG	SEP	OCT	NOV	DEC	TOTAL 1/
LAKE HAVASU CITY															
DISTRICT PUMPED FROM WELLS															
	DIVERSION		1,149	1,025	1,107	1,138	1,141	1,500	1,632	1,794	1,523	1,459	1,270	1,113	15,851
	MEAS. RETURNS		0	0	0	0	0	0	0	0	0	0	0	0	0
	UNMEAS. RETURNS		437	390	421	432	434	570	620	682	579	554	483	423	6,025
	CONSUMPTIVE USE		712	635	686	706	707	930	1,012	1,112	944	905	787	690	9,826
CENTRAL ARIZONA PROJECT															
PUMPED FROM LAKE HAVASU															
	DIVERSION		133,727	131,318	171,214	160,808	159,299	148,452	100,014	42,417	134,100	164,060	147,108	118,236	1,610,753
	MEAS. RETURNS		0	0	0	0	0	0	0	0	0	0	0	0	0
	UNMEAS. RETURNS		0	0	0	0	0	0	0	0	0	0	0	0	0
	CONSUMPTIVE USE		133,727	131,318	171,214	160,808	159,299	148,452	100,014	42,417	134,100	164,060	147,108	118,236	1,610,753
TOWN OF PARKER															
PUMPED FROM RIVER															
	5/ DIVERSION		0	0	0	0	0	0	0	0	0	0	0	0	0
WELL IN FLOOD PLAIN															
	DIVERSION		52	48	72	75	84	85	85	91	75	71	56	40	834
	MEAS. RETURNS		21	21	24	24	24	22	23	22	21	22	25	24	273
	UNMEAS. RETURNS		15	14	21	21	24	24	24	26	21	20	16	11	237
	CONSUMPTIVE USE		16	13	27	30	36	39	38	43	33	29	15	5	324
COLORADO RIVER INDIAN RESERVATION															
DIVERSION AT HEADGATE ROCK DAM															
	6/ DIVERSION		26,410	32,290	42,280	64,540	69,880	69,920	73,230	70,960	57,050	40,880	28,160	25,290	600,890
2 PUMPS AND MUNICIPAL															
	DIVERSION		537	634	876	941	1,138	1,349	1,453	1,408	1,116	952	688	650	11,742
	MEAS. RETURNS		14,028	13,838	16,695	19,408	21,497	18,480	19,422	19,876	19,734	19,667	17,257	16,133	216,035
	UNMEAS. RETURNS		1,482	1,811	2,374	3,601	3,906	3,920	4,108	3,980	3,199	2,301	1,587	1,427	33,696
	CONSUMPTIVE USE		11,437	17,275	24,087	42,472	45,615	48,869	51,153	48,512	35,233	19,864	10,004	8,380	362,901
EHRENBURG IMPROVEMENT ASSN.															
ONE RIVER PUMP															
	DIVERSION		32	29	35	39	41	47	51	49	43	39	31	25	461
	MEAS. RETURNS		0	0	0	0	0	0	0	0	0	0	0	0	0
	UNMEAS. RETURNS		9	8	10	11	12	13	15	14	12	11	9	7	131
	CONSUMPTIVE USE		23	21	25	28	29	34	36	35	31	28	22	18	330
CIBOLA VALLEY															
CIBOLA VALLEY I.D.D.															
	DIVERSION		92	738	1,793	855	1,276	2,182	2,510	1,864	1,400	658	205	47	13,620
MOHAVE COUNTY WATER AUTHORITY															
	DIVERSION		11	441	660	487	902	1,085	1,077	848	949	207	20	58	6,745
HOPI TRIBE															
	DIVERSION		274	499	543	411	702	799	884	763	596	504	387	331	6,693
	MEAS. RETURNS		0	0	0	0	0	0	0	0	0	0	0	0	0
	UNMEAS. RETURNS		107	478	854	500	821	1,159	1,274	990	839	390	174	124	7,710
	CONSUMPTIVE USE		270	1,200	2,142	1,253	2,059	2,907	3,197	2,485	2,106	979	438	312	19,348
CIBOLA NATIONAL WILDLIFE REFUGE															
3 PUMPS															
	DIVERSION		605	415	1,016	851	1,352	1,183	1,590	1,134	2,037	1,218	1,533	614	13,548
	MEAS. RETURNS		0	0	0	0	0	0	0	0	0	0	0	0	0
	UNMEAS. RETURNS		230	158	386	323	514	450	604	431	774	463	583	233	5,149
	CONSUMPTIVE USE		375	257	630	528	838	733	986	703	1,263	755	950	381	8,399
IMPERIAL NATIONAL WILDLIFE REFUGE															
4 PUMPS															
	DIVERSION		70	51	52	52	80	69	122	92	146	66	57	543	1,400
	MEAS. RETURNS		0	0	0	0	0	0	0	0	0	0	0	0	0
	UNMEAS. RETURNS		27	19	20	20	30	26	46	35	55	25	22	206	531
	CONSUMPTIVE USE		43	32	32	32	50	43	76	57	91	41	35	337	869
YUMA PROVING GROUND															
DIVERSION AT IMPERIAL DAM															
	DIVERSION		0	1	1	0	0	0	3	1	0	0	0	1	7
WELLS W, X, Y, Z															
	DIVERSION		22	20	25	67	93	72	96	112	27	60	51	60	705
	MEAS. RETURNS		0	0	0	0	0	0	0	0	0	0	0	0	
	UNMEAS. RETURNS		0	0	0	0	0	0	0	0	0	0	0	0	
	CONSUMPTIVE USE		22	21	26	67	93	72	99	113	27	60	51	61	712
GILA MONSTER FARMS															
DIVERSION AT IMPERIAL DAM															
	DIVERSION		573	587	1,168	1,205	957	1,053	706	709	686	1,014	554	243	9,455
	MEAS. RETURNS		34	32	117	72	66	75	42	48	13	45	9	6	559
	UNMEAS. RETURNS		218	223	444	458	364	400	268	269	261	385	211	92	3,593
	CONSUMPTIVE USE		321	332	607	675	527	578	396	392	412	584	334	145	5,303

\*Use from ASLD lease has been deducted.

DIVERSIONS FROM MAINSTREAM-AVAILABLE RETURN FLOW  
AND CONSUMPTIVE USE OF SUCH WATER  
CALENDAR YEAR 2007  
STATE OF ARIZONA

		12/22/08	(ACRE-FEET)											
WATER USER	Ftnts	JAN	FEB	MAR	APR	MAY	JUN	JUL	AUG	SEP	OCT	NOV	DEC	TOTAL 1/
WELLTON MOHAWK I. D. D. DIVERSION AT IMPERIAL DAM		22,030	26,201	45,292	44,165	49,741	48,672	43,839	37,292	38,313	35,458	20,587	8,570	420,160
		1,449	1,583	5,022	2,964	3,816	3,848	2,915	2,802	821	1,755	357	229	27,561
		794	666	952	1,170	706	512	301	228	263	334	346	639	6,911
	7/	9,450	8,580	9,160	9,070	9,400	8,610	9,260	8,670	9,190	9,590	10,020	11,910	112,910
		11,693	10,829	15,134	13,204	13,922	12,970	12,476	11,700	10,274	11,679	10,723	12,778	147,382
		0	0	0	0	0	0	0	0	0	0	0	0	0
		10,337	15,372	30,158	30,961	35,819	35,702	31,363	25,592	28,039	23,779	9,864	-4,208	272,778
CITY OF YUMA DIVERSION AT IMPERIAL DAM (AAC)		1,960	1,800	2,107	1,939	2,035	2,297	2,264	2,407	2,075	1,985	1,816	1,847	24,532
DIVERSION AT IMPERIAL DAM (GGMC)		0	0	0	0	0	0	0	0	0	0	0	0	0
YUMA EAST WETLANDS		11	10	24	30	42	46	47	41	29	19	11	8	320
DIVERTED FOR MWD DESALTING STUDY		64	58	66	67	67	65	0	0	0	0	0	0	387
		805	594	823	827	757	761	778	829	829	834	832	843	9,512
		4	3	8	9	11	11	11	9	7	5	4	3	84
		1,226	1,271	1,366	1,200	1,376	1,636	1,523	1,610	1,268	1,165	992	1,010	15,642
MARINE CORPS AIR STATION (YUMA) DIVERSION AT IMPERIAL DAM		75	65	130	137	173	167	199	191	168	155	109	85	1,654
		0	0	0	0	0	0	0	0	0	0	0	0	0
		0	0	0	0	0	0	0	0	0	0	0	0	0
		75	65	130	137	173	167	199	191	168	155	109	85	1,654
SOUTHERN PACIFIC COMPANY DIVERSION AT IMPERIAL DAM		4	4	4	4	4	4	4	4	4	4	4	4	48
		0	0	0	0	0	0	0	0	0	0	0	0	0
		2	2	2	2	2	2	2	2	2	2	2	2	24
		2	2	2	2	2	2	2	2	2	2	2	2	24
YUMA MESA FRUIT GROWERS ASSN. DIVERSION AT IMPERIAL DAM		0	0	0	0	0	0	0	0	0	0	0	0	0
		0	0	0	0	0	0	0	0	0	0	0	0	0
		0	0	0	0	0	0	0	0	0	0	0	0	0
		0	0	0	0	0	0	0	0	0	0	0	0	0
UNIVERSITY OF ARIZONA DIVERSION AT IMPERIAL DAM (WARREN ACT)		38	62	28	69	81	73	88	72	67	1	32	27	638
		0	0	0	0	0	0	0	0	0	0	0	0	0
		0	0	0	0	0	0	0	0	0	0	0	0	0
		38	62	28	69	81	73	88	72	67	1	32	27	638
YUMA UNION HIGH SCHOOL DIVERSION AT IMPERIAL DAM		10	13	14	24	43	36	41	35	26	23	16	28	309
		0	0	0	0	0	0	0	0	0	0	0	0	0
		3	3	4	6	11	9	10	9	7	6	4	7	79
		7	10	10	18	32	27	31	26	19	17	12	21	230
CAMILLE ALLEC JR. DIVERSION AT IMPERIAL DAM (WARREN ACT)		0	0	0	0	0	0	0	0	0	0	0	0	0
		0	0	0	0	0	0	0	0	0	0	0	0	0
		0	0	0	0	0	0	0	0	0	0	0	0	0
		0	0	0	0	0	0	0	0	0	0	0	0	0
DESERT LAWN MEMORIAL DIVERSION AT IMPERIAL DAM		2	0	2	0	14	0	17	15	2	0	5	0	57
		0	0	0	0	0	0	0	0	0	0	0	0	0
		1	0	1	0	4	0	5	5	1	0	2	0	19
		1	0	1	0	10	0	12	10	1	0	3	0	38
NORTH GILA VALLEY I.D.D. DIVERSION AT IMPERIAL DAM	8/	2,785	2,591	4,607	4,836	5,734	4,919	4,687	3,289	3,550	4,965	3,344	2,221	47,528
		1,672	1,362	2,499	2,570	3,048	2,622	2,735	2,102	2,115	2,967	2,145	1,769	27,606
		382	355	631	663	786	674	642	451	486	680	458	304	6,512
		731	874	1,477	1,603	1,900	1,623	1,310	736	949	1,318	741	148	13,410

DIVERSIONS FROM MAINSTREAM-AVAILABLE RETURN FLOW  
AND CONSUMPTIVE USE OF SUCH WATER  
CALENDAR YEAR 2007  
STATE OF ARIZONA

		12/22/08	(ACRE-FEET)												
WATER USER	Ftrts		JAN	FEB	MAR	APR	MAY	JUN	JUL	AUG	SEP	OCT	NOV	DEC	TOTAL 1/
YUMA IRRIGATION DISTRICT															
DIVERSION AT IMPERIAL DAM	8/	DIVERSION	3,839	4,464	7,225	7,277	7,638	6,200	5,218	5,210	4,804	6,388	4,369	3,177	65,809
PUMPED FROM PRIVATE WELLS	9/	DIVERSION	127	94	199	176	193	108	202	145	158	115	71	25	1,613
	10/	DELIVERED BY YID	193	220	360	378	499	504	517	392	269	246	282	133	3,993
SURFACE RETURNS		MEAS. RETURNS	1,062	1,206	2,314	1,929	2,187	1,836	1,479	1,598	1,098	1,668	1,001	824	18,202
PUMPED FROM WELLS	9/	MEAS. RETURNS	0	0	0	0	0	0	0	0	0	0	0	0	0
		UNMEAS. RETURNS	845	971	1,581	1,587	1,668	1,344	1,154	1,141	1,057	1,385	946	682	14,361
		CONSUMPTIVE USE	2,059	2,381	3,529	3,937	3,976	3,128	2,787	2,616	2,807	3,450	2,493	1,696	34,859
YUMA MESA I. D. D.															
DIVERSION AT IMPERIAL DAM	8/	DIVERSION	11,217	10,143	15,204	18,951	24,236	24,863	28,700	25,408	16,297	13,992	11,745	5,713	206,469
		MEAS. RETURNS	6,901	7,911	9,357	7,684	8,362	8,866	11,486	10,476	7,428	8,356	6,404	5,891	99,122
		UNMEAS. RETURNS	1,795	1,623	2,433	3,032	3,878	3,978	4,592	4,065	2,608	2,239	1,879	914	33,036
		CONSUMPTIVE USE	2,521	609	3,414	8,235	11,996	12,019	12,622	10,867	6,261	3,397	3,462	-1,092	74,311
UNIT "B" I. D. D.															
DIVERSION AT IMPERIAL DAM		DIVERSION	1,740	1,581	1,847	2,329	3,091	3,477	3,823	3,654	2,579	2,490	1,996	831	29,438
		MEAS. RETURNS	1,197	1,379	1,529	1,265	1,354	1,469	1,916	1,765	1,302	1,476	1,128	1,033	16,813
		UNMEAS. RETURNS	0	0	0	0	0	0	0	0	0	0	0	0	0
		CONSUMPTIVE USE	543	202	318	1,064	1,737	2,008	1,907	1,889	1,277	1,014	868	-202	12,625
FORT YUMA INDIAN RESERVATION															
DIVERSIONS FOR YUMA EAST WETLANDS		DIVERSION	14	14	44	55	85	102	91	80	50	27	11	7	580
RANCH "5" LANDS, YUMA ISLAND, AZ (180 ac)		DIVERSION	56	43	62	86	131	48	161	31	62	56	108	30	874
DOMESTIC		DIVERSION	2	2	2	2	2	2	3	2	1	2	1	1	22
		MEAS. RETURNS	0	0	0	0	0	0	0	0	0	0	0	0	0
		UNMEAS. RETURNS	32	28	64	72	101	79	96	46	45	33	44	15	655
		CONSUMPTIVE USE	40	31	44	71	117	73	159	67	68	52	76	23	821
YUMA COUNTY WATER USERS' ASSOCIATION															
DIVERSION AT IMPERIAL DAM		DIVERSION	21,076	22,724	37,520	43,083	39,540	26,221	24,185	18,605	27,322	39,947	29,902	16,949	347,074
PUMPED FROM WELLS		DIVERSION	149	41	25	40	479	45	19	0	13	0	9	17	837
		MEAS. RETURNS	8,826	8,098	8,533	8,264	8,608	7,437	6,035	5,495	8,083	10,524	10,747	8,102	98,752
		UNMEAS. RETURNS	446	478	788	906	840	552	508	391	574	839	628	356	7,306
		CONSUMPTIVE USE	11,953	14,189	28,224	33,953	30,571	18,277	17,661	12,719	18,678	28,584	18,536	8,508	241,853
COCOPA INDIAN RESERVATION															
DIVERSION AT IMPERIAL DAM		DIVERSION	87	71	136	133	397	115	121	467	312	789	441	376	3,445
PUMPED FROM WELLS	11/	DIVERSION	1	0	0	0	5	0	0	0	0	0	0	0	6
		MEAS. RETURNS	2	1	3	2	5	2	1	8	7	24	17	7	79
		UNMEAS. RETURNS	0	0	0	0	2	0	0	0	0	0	0	0	2
		CONSUMPTIVE USE	86	70	133	131	395	113	120	459	305	765	424	369	3,370
RECLAMATION, YUMA AREA OFFICE															
PUMPED FROM COOPER LATERAL		DIVERSION	8	8	8	8	8	8	10	6	6	5	5	5	85
		MEAS. RETURNS	0	0	0	0	0	0	0	0	0	0	0	0	0
		UNMEAS. RETURNS	0	0	0	0	0	0	0	0	0	0	0	0	0
		CONSUMPTIVE USE	8	8	8	8	8	8	10	6	6	5	5	5	85
PUMPED FROM SOUTH GILA WELLS (DPOC'S)															
	12/	MEAS. RETURNS	7,187	5,894	5,912	5,561	5,929	6,481	5,907	5,929	5,854	6,067	5,718	3,925	70,364
		UNMEAS. ABOVE	-7,187	-5,894	-5,912	-5,561	-5,929	-6,481	-5,907	-5,929	-5,854	-6,067	-5,718	-3,925	-70,364
		RETURNS CREDIT	0	0	0	0	0	0	0	0	0	0	0	0	0
OTHER USERS PUMPING FROM COLORADO															
RIVER AND WELLS IN FLOOD PLAIN DAVIS	13/	DIVERSION	1,568	1,754	2,463	2,462	2,932	3,488	3,335	3,036	2,348	2,266	1,968	1,802	29,422
DAM TO INTERNATIONAL BOUNDARY		MEAS. RETURNS	0	0	0	0	0	0	0	0	0	0	0	0	0
		UNMEAS. RETURNS	549	615	862	862	1,026	1,221	1,167	1,063	823	794	690	631	10,303
		CONSUMPTIVE USE	1,019	1,139	1,601	1,600	1,906	2,267	2,168	1,973	1,525	1,472	1,278	1,171	19,119
ARIZONA TOTALS															
		DIVERSION	236,269	248,876	352,060	375,206	394,954	370,642	321,000	239,492	313,538	330,211	263,092	192,273	3,637,615
		MEAS. RETURNS	53,435	51,168	62,954	60,867	65,773	61,026	62,304	59,852	56,764	63,333	56,010	51,339	704,825
		UNMEAS. RETURNS	2,184	6,164	13,561	18,004	20,727	20,340	21,018	17,050	13,592	9,061	4,846	2,921	149,467
		CONSUMPTIVE USE	180,650	191,544	275,545	296,335	308,454	289,276	237,678	162,590	243,182	257,817	202,237	138,013	2,783,323

DIVERSIONS FROM MAINSTREAM-AVAILABLE RETURN FLOW  
AND CONSUMPTIVE USE OF SUCH WATER  
CALENDAR YEAR 2007  
STATE OF ARIZONA

12/22/08

(ACRE-FEET)

WATER USER	Ftnts	JAN	FEB	MAR	APR	MAY	JUN	JUL	AUG	SEP	OCT	NOV	DEC	TOTAL 1/
------------	-------	-----	-----	-----	-----	-----	-----	-----	-----	-----	-----	-----	-----	----------

Note: The term 'CONSUMPTIVE USE' in this tabulation means diversions, including groundwater pumping, less measured return flow and less current estimated unmeasured return flow to the river.

- 1/ Totals may differ from the sum of the monthly values due to rounding to the nearest acre-foot.
- 2/ Diversion amounts include deliveries to the Fort Mojave Tribe from the City of Needles and diversions from Topock Marsh Inlet canal.
- 3/ Reported as an annual total only, distributed monthly according to the monthly use patterns of nearby users.
- 4/ Havasu NWR diversion amounts have been adjusted downward for diversions out of the Topock Marsh inlet canal by Mohave Valley Irrigation and Drainage District and Fort Mojave Indian Reservation.
- 5/ The Town of Parker diversion amounts have been adjusted downward for potable water delivered to the Colorado River Indian Tribes by the Town of Parker.
- 6/ Sum of diversions by two river pumps, water delivered by the Town of Parker and an estimate of municipal diversion. Municipal diversions are estimated by multiplying CRIT's measured effluent by the Town of Parker's diversion to effluent ratio. CRIT portion of wastewater returns from Joint Venture Treatment Plant are combined with agricultural drainage measured at Scott Road gage.
- 7/ Main Outlet Drain return flow credit is measured flow at Station 0+00. During periods of sustained flow in the Gila River this measurement includes both Colorado River and Gila River water. At such times Reclamation will determine how best to differentiate return flows from the two sources.

8/ This is the summation for the Yuma Mesa Division of the Gila Project, consisting of the North Gila Valley Irrigation and Drainage District, Yuma Irrigation District, and the Yuma Mesa Irrigation and Drainage District:

Item	Annual Totals (Acre-Feet)
Diversion at Imperial Dam	319,806
Pumped from wells	1,613
Surface returns from South Gila Valley (S.Gila Canal Wasteway)	2,778
Return flow North Gila Valley (6 drains & wasteways)	7,788
Total Yuma Mesa Division Unmeasured Returns	53,909
Return flow Yuma Mesa Outlet Drain	37,935
Return flow protective and regulatory pumping unit	43,319
Estimated unmeasured groundwater return flow	27,274
Return flow share of Gila Main Canal loss	25,834
Subtotal return flow	198,837
Consumptive Use (see note above)	122,582

- (A) Total surface diversion for the North Gila Valley Irrigation and Drainage District, Yuma Irrigation District, and the Yuma Mesa Irrigation and Drainage District.
- (B) Estimated at 85 percent of the Yuma Mesa Outlet Drain with balance credited to 'Unit B'.
- (C) Estimated at 85 percent of Protective and Regulatory Pumping Unit with balance credited to 'Unit B'.
- (D) Estimated at 38 percent of the North Gila Valley Diversion at Imperial Dam plus 14 percent of Yuma Irrigation District diversion at Imperial Dam. (Based on analysis of the USGS Report 83-4220 entitled 'A Method for Estimating Ground-Water Return Flow to the Lower Colorado River in the Yuma Area')
- (E) Diversion times mileage weighted share of Gila Main Canal loss, less canal surface evaporation (1,397 af/yr), and phreatophytes (2,154 af/yr).

- 9/ Diversion and return amounts include pumpage from AEW-6,7,8,10,11,41, some of which deliver water for irrigation others are pumped to control groundwater elevation. These wells were previously reported in the Arizona Supplemental Section.
- 10/ This is water diverted by YID and delivered to G. Ogram, Ogram Boy's Enterprises, and ASLD leasees which lie outside of the YID service area. YID's GGMC diversion and loss have been reduced accordingly.
- 11/ Diversion amounts include pumpage from AEW-15,16 and the Cocopah Bend R.V. Park. These wells were previously reported in the Arizona Supplemental Section.
- 12/ Until comprehensive modeling of the Yuma area, to determine how unmeasured returns are affected by pumping of the DPOC wellfield, is complete, this pumpage is added to Arizona's measured returns and subtracted from Arizona's unmeasured returns.
- 13/ Details may be found on the Arizona Supplemental Sheets.



ARIZONA SUPPLEMENTAL TABULATION  
CALENDAR YEAR 2007  
STATE OF ARIZONA

		12/22/08	(ACRE-FEET)												
WATER USER	Ftnts	USGS # 1/	JAN	FEB	MAR	APR	MAY	JUN	JUL	AUG	SEP	OCT	NOV	DEC	TOTAL
Marble Canyon Company			3	2	3	3	3	3	2	2	2	2	2	1	28
SUBTOTAL, LEE FERRY TO DAVIS DAM	2/		3	2	3	3	3	3	2	2	2	2	2	1	28
		MEAS. RETURNS	0	0	0	0	0	0	0	0	0	0	0	0	0
		UNMEAS. RETURNS	1	1	1	1	1	1	1	1	1	1	1	0	11
		CONSUMPTIVE USE	2	1	2	2	2	2	1	1	1	1	1	1	17
McAlister, M.			0	1	1	1	1	1	1	1	1	1	1	0	10
Crystal Beach Water Conservation District			9	9	9	9	9	9	9	9	9	9	9	9	108
Arizona-American Water Co.			95	0	128	48	34	68	71	71	70	59	48	59	751
Arizona State Parks (Windsor Beach)			1	1	2	1	2	2	3	3	2	1	1	0	19
SUBTOTALS, DAVIS DAM TO PARKER DAM	2/		105	11	140	59	46	80	84	84	82	70	59	68	888
		MEAS. RETURNS	0	0	0	0	0	0	0	0	0	0	0	0	0
		UNMEAS. RETURNS	37	4	49	21	16	28	29	29	29	25	21	24	312
		CONSUMPTIVE USE	68	7	91	38	30	52	55	55	53	45	38	44	576
Hillcrest Water Co.			1	1	2	2	2	3	4	3	3	3	2	2	28
Rayner, Jack Jr.		AEP-9, AEW-35	0	188	375	563	563	747	750	563	375	188	188	0	4,500
Arizona State Land Department (domestic use)			4	5	4	7	8	7	8	8	6	4	6	4	71
Arizona State Land Department (agricultural use)			16	20	327	131	321	455	233	217	150	76	47	145	2,138
North Baja Pipeline, LLC, (TransCanada)			34	34	24	13	11	51	26	0	28	33	26	19	299
BLM Permittees (LHFO & YFO)			68	54	70	84	81	110	102	85	57	98	41	90	940
SUBTOTALS, PARKER DAM TO IMPERIAL DAM	2/		123	302	802	800	986	1,373	1,123	876	619	402	310	260	7,976
		MEAS. RETURNS	0	0	0	0	0	0	0	0	0	0	0	0	0
		UNMEAS. RETURNS	43	106	281	280	345	481	393	307	217	141	109	91	2,794
		CONSUMPTIVE USE	80	196	521	520	641	892	730	569	402	261	201	169	5,182
Bard Date Gardens (Jessen Family LTD. Partnership)		AEP-1, AEW-3	64	57	90	71	114	125	58	123	42	27	56	60	887
Glen Curtis Citrus		AEP-3, AEW-4/5, ADW-3	131	94	98	130	163	222	175	163	130	131	136	97	1,670
Youmans, R. (Beatty Farms Southwest)		ADW-2	44	56	75	81	99	120	131	126	99	83	59	58	1,031
BLM Permittees (YFO)			12	19	20	27	33	27	25	24	24	24	20	37	292
Pratt, L.		ADW-1	13	17	23	25	30	37	40	38	30	25	18	17	313
Ogram, George		AEW-9 Delivered by Y.I.D.	92	33	20	33	23	12	18	66	86	69	0	0	452
Ogram Boys Enterprizes		Delivered by Y.I.D.	80	161	39	25	67	50	63	56	0	61	102	79	783
Peach		AEW-13/AEW-48	13	17	23	25	30	36	40	38	30	25	18	16	311
Yucca Pwr Plant (Arizona Public Service Co.)			49	45	53	24	52	63	69	80	67	60	56	47	665
Amigo Farms		AEW-14, ADP-1	25	44	39	52	84	38	40	83	37	34	0	0	476
Curry Family Limited		AEP-4, ADP-2	12	15	20	22	27	33	36	34	27	23	16	16	281
Power, P.		ADP-3/4	33	41	56	60	74	90	98	94	74	62	44	43	769
North Cocopah Tribe		AEP-22, AEW-15/16/49	126	157	215	232	283	344	373	361	284	238	169	165	2,947
Pasquinelli, Gary		ADP-5	38	38	38	76	38	38	0	38	38	38	38	38	456
Arizona State Land Department (agricultural use)			605	645	709	717	780	797	960	750	677	892	865	800	9,197
SUBTOTALS, BELOW IMPERIAL DAM	2/		1,337	1,439	1,518	1,600	1,897	2,032	2,126	2,074	1,645	1,792	1,597	1,473	20,530
		MEAS. RETURNS	0	0	0	0	0	0	0	0	0	0	0	0	0
		UNMEAS. RETURNS	468	504	531	560	664	711	744	726	576	627	559	516	7,186
		CONSUMPTIVE USE	869	935	987	1,040	1,233	1,321	1,382	1,348	1,069	1,165	1,038	957	13,344
=====															
TOTAL ARIZONA SUPPLEMENTAL TABULATION	2/		1,568	1,754	2,463	2,462	2,932	3,488	3,335	3,036	2,348	2,266	1,968	1,802	29,422
		MEAS. RETURNS	0	0	0	0	0	0	0	0	0	0	0	0	0
		UNMEAS. RETURNS	549	615	862	862	1,026	1,221	1,167	1,063	823	794	690	631	10,303
		CONSUMPTIVE USE	1,019	1,139	1,601	1,600	1,906	2,267	2,168	1,973	1,525	1,472	1,278	1,171	19,119

ARIZONA SUPPLEMENTAL TABULATION  
 CALENDAR YEAR 2007  
 STATE OF ARIZONA

12/22/08

(ACRE-FEET)

WATER USER	Ftns	USGS # 1/	JAN	FEB	MAR	APR	MAY	JUN	JUL	AUG	SEP	OCT	NOV	DEC	TOTAL
------------	------	-----------	-----	-----	-----	-----	-----	-----	-----	-----	-----	-----	-----	-----	-------

**Foot notes:**

1/ Reference number listed on the annual USGS, Yuma Field Office report "Pumped Diversions From The Colorado River and Adjacent Floodplain", or the column contains a comment.

2/ Monthly and annual totals rounded and displayed to the nearest whole number.

3/ Calculated by assuming an annual diversion rate of 6.25 af per acre.

4/ Ogram, Ogram Boys, and some ALSD lands have water delivered (wheeled) to them by YID from the GGMC. A proportionate share of the loss associated with the GGMC has been assessed.

DIVERSIONS FROM MAINSTREAM-AVAILABLE RETURN FLOW  
AND CONSUMPTIVE USE OF SUCH WATER  
CALENDAR YEAR 2007  
STATE OF CALIFORNIA

12/22/08

(ACRE-FEET)

WATER USER	Ftnts	JAN	FEB	MAR	APR	MAY	JUN	JUL	AUG	SEP	OCT	NOV	DEC	TOTAL 1/
FORT MOJAVE INDIAN RESERVATION DELIVERED BY CITY OF NEEDLES PUMPED FROM RIVER AND WELLS	2/	DIVERSION 4	2	1	3	6	5	4	3	5	5	9	1	48
		DIVERSION 577	1378	1919	2135	1864	3019	2816	2598	1932	1472	939	626	21,275
		MEAS. RETURNS 0	0	0	0	0	0	0	0	0	0	0	0	0
		UNMEAS. RETURNS 268	638	887	988	864	1,397	1,303	1,202	895	682	438	290	9,852
		CONSUMPTIVE USE 313	742	1,033	1,150	1,006	1,627	1,517	1,399	1,042	795	510	337	11,471
CITY OF NEEDLES PUMPED FROM WELLS	3/	DIVERSION 137	146	190	227	259	289	296	278	241	231	182	111	2,587
		MEAS. RETURNS 30	30	34	34	40	34	39	36	35	33	31	33	409
		UNMEAS. RETURNS 28	29	37	41	50	57	60	51	49	48	37	24	511
		CONSUMPTIVE USE 79	87	119	152	169	198	197	191	157	150	114	54	1,667
CHEMEHUEVI INDIAN RESERVATION PUMPED FROM RIVER AND WELLS		DIVERSION 15	11	30	17	23	25	29	26	22	61	18	17	294
		MEAS. RETURNS 0	0	0	0	0	0	0	0	0	0	0	0	0
		UNMEAS. RETURNS 7	5	14	8	11	12	13	12	10	28	8	8	136
		CONSUMPTIVE USE 8	6	16	9	12	13	16	14	12	33	10	9	158
METROPOLITAN WATER DISTRICT DIVERSION FROM LAKE HAVASU SUPPLEMENTAL WATER	4/	DIVERSION 44,145	52,675	13,191	69,480	79,316	76,463	56,987	91,007	84,397	21,071	22,980	26,952	638,664
		DIVERSION 375	375	375	375	375	375	375	375	375	375	375	375	4,500
WATER EXCHANGED WITH SDCWA	5/	DIVERSION 5,958	5,958	5,959	5,958	5,958	5,959	5,958	5,958	5,959	5,958	5,958	7,584	73,125
		MEAS. RETURNS 268	234	257	247	247	230	199	203	200	244	244	260	2,833
		UNMEAS. RETURNS 0	0	0	0	0	0	0	0	0	0	0	0	0
		CONSUMPTIVE USE 50,210	58,774	19,268	75,566	85,402	82,567	63,121	97,137	90,531	27,160	29,069	34,651	713,456
PARKER DAM AND GOVERNMENT CAMP DIVERSION AT PARKER DAM	3/	DIVERSION 16	12	15	18	20	19	18	23	19	20	11	6	197
		MEAS. RETURNS 2	2	2	2	10	10	10	10	10	2	1	2	63
		UNMEAS. RETURNS 0	0	0	0	0	0	0	0	0	0	0	0	0
		CONSUMPTIVE USE 14	10	13	16	10	9	8	13	9	18	10	4	134
COLORADO RIVER INDIAN RESERVATION 3 RIVER PUMPS		DIVERSION 180	227	309	334	409	496	541	520	409	343	243	239	4,250
BIG RIVER DEVELOPMENT - 8 WELLS		DIVERSION 64	68	94	105	134	150	170	173	151	114	76	47	1,346
		MEAS. RETURNS 0	0	0	0	0	0	0	0	0	0	0	0	0
		UNMEAS. RETURNS 106	128	174	190	235	280	308	300	242	198	138	124	2,423
		CONSUMPTIVE USE 138	167	229	249	308	366	403	393	318	259	181	162	3,173
CITY OF WINTERHAVEN PUMPED FROM 1 WELL IN FLOODPLAIN	6/	DIVERSION 5	6	8	8	10	12	13	13	10	9	6	6	106
		MEAS. RETURNS 0	0	0	0	0	0	0	0	0	0	0	0	0
		UNMEAS. RETURNS 2	2	3	3	3	4	4	4	3	3	2	2	35
		CONSUMPTIVE USE 3	4	5	5	7	8	9	9	7	6	4	4	71
PALO VERDE IRRIGATION DISTRICT DIVERSION FROM PALO VERDE DAM		DIVERSION 36,710	52,060	67,870	77,590	107,900	107,300	113,000	110,000	96,320	62,710	48,280	37,350	917,090
		MEAS. RETURNS 31,608	31,285	38,198	37,338	42,132	45,455	50,652	47,513	48,337	42,212	37,820	37,835	490,385
		UNMEAS. RETURNS 2,056	2,915	3,801	4,345	6,042	6,009	6,328	6,160	5,394	3,512	2,704	2,092	51,358
		CONSUMPTIVE USE 3,046	17,860	25,871	35,907	59,726	55,836	56,020	56,327	42,589	16,986	7,756	-2,577	375,347
YUMA PROJECT, RES. DIV. INDIAN UNIT DIVERSION AT IMPERIAL DAM DOMESTIC	7/	DIVERSION 2,901	2,917	5,450	6,197	6,738	2,403	2,295	2,420	1,938	4,567	4,347	2,323	44,496
		DIVERSION 34	42	57	66	76	92	100	96	78	61	48	44	794
		MEAS. RETURNS 61	51	90	89	67	38	17	36	32	122	141	38	782
		UNMEAS. RETURNS 500	506	936	1,064	1,159	442	428	447	359	790	747	408	7,786
YUMA PROJECT, RES. DIV. BARD UNIT DIVERSION AT IMPERIAL DAM		DIVERSION 2,467	1,978	4,122	5,291	5,192	5,042	2,668	3,241	3,779	4,544	3,369	1,761	43,454
		MEAS. RETURNS 31	20	39	43	31	48	15	27	41	66	67	16	444
		UNMEAS. RETURNS 412	330	688	884	867	842	446	541	631	759	563	294	7,257
RETURNS FROM YUMA PROJECT RESERVATION DIVISION RETURNS	8/	MEAS. RETURNS 2,178	1,786	2,314	2,078	1,903	1,954	2,301	2,315	2,380	2,380	2,222	2,084	25,895
SUM YUMA PROJECTS, RES. DIV. USE		CONSUMPTIVE USE 2,220	2,244	5,562	7,396	7,979	4,213	1,856	2,391	2,352	5,055	4,024	1,288	46,580

DIVERSIONS FROM MAINSTREAM-AVAILABLE RETURN FLOW  
AND CONSUMPTIVE USE OF SUCH WATER  
CALENDAR YEAR 2007  
STATE OF CALIFORNIA

12/22/08

(ACRE-FEET)

WATER USER	Ftrnts	JAN	FEB	MAR	APR	MAY	JUN	JUL	AUG	SEP	OCT	NOV	DEC	TOTAL 1/
IMPERIAL IRRIGATION DISTRICT														
DIVERSION AT IMPERIAL DAM	9/													
		157,668	174,743	287,839	317,642	333,477	310,384	339,390	290,303	249,979	230,433	149,390	111,278	2,952,526
		5,506	5,028	7,673	7,431	5,605	8,741	4,835	6,789	7,427	9,705	8,116	2,916	79,772
		0	0	0	0	0	0	0	0	0	0	0	0	0
		152,162	169,715	280,166	310,211	327,872	301,643	334,555	283,514	242,552	220,728	141,274	108,362	2,872,754
WATER TRANSFERRED TO SDCWA (MITIGATION)	10/													
		0	7,215	1,719	1,933	2,306	3,958	4,549	2,062	0	0	0	129	23,871
		0	208	46	45	39	111	65	48	0	0	0	3	565
		0	7,007	1,673	1,888	2,267	3,847	4,484	2,014	0	0	0	126	23,306
COACHELLA VALLEY WATER DISTRICT														
DIVERSION AT IMPERIAL DAM		19,321	19,215	25,882	24,574	32,816	31,827	34,260	32,901	28,417	27,397	29,859	14,705	321,174
		675	553	690	575	552	896	488	769	844	1,154	1,622	385	9,203
		0	0	0	0	0	0	0	0	0	0	0	0	0
		18,646	18,662	25,192	23,999	32,264	30,931	33,772	32,132	27,573	26,243	28,237	14,320	311,971
OTHER USERS PUMPING FROM COLORADO RIVER AND WELLS IN FLOOD PLAIN														
DAVIS DAM TO INTERNATIONAL BOUNDARY	11/	854	1,003	1,373	1,535	1,902	2,103	2,486	2,170	1,774	1,502	1,237	1,054	18,993
		8	10	14	15	19	23	25	24	20	16	11	11	196
		367	432	592	663	826	908	1,080	936	767	646	527	446	8,190
		479	561	767	857	1,057	1,172	1,381	1,210	987	840	699	597	10,607
CALIFORNIA TOTALS														
		271,431	320,031	416,403	513,488	578,781	549,921	565,955	544,167	475,805	360,873	267,327	204,608	5,068,790
		40,367	39,207	49,357	47,897	50,645	57,540	58,646	57,770	59,326	55,934	50,275	43,583	610,547
		3,746	4,985	7,132	8,186	10,057	9,951	9,970	9,653	8,350	6,666	5,164	3,688	87,548
		227,318	275,839	359,914	457,405	518,079	482,430	497,339	476,744	408,129	298,273	211,888	157,337	4,370,695

Note: The term 'CONSUMPTIVE USE' as used in this tabulation means diversions, including ground water pumping, less measured return flow and less current estimated unmeasured return flow to the river.

Footnotes:

- 1/ Totals may differ from the sum of the monthly values due to rounding to the nearest acre-foot.
- 2/ Diversion amounts include deliveries to the Fort Mojave Tribe by the City of Needles. Diversion values listed as pumped from river and wells are provided by the Fort Mojave Tribe and Reclamation.
- 3/ A portion of this Colorado River use is offset by pumping from the LCWSP. Details shown in the LCWSP section of this report.
- 4/ Water available to MWD which would have been available for allocation to the San Luis Rey Settlement Parties (SLRSP) as a result of the Coachella Canal Lining Project had the requirements of Section 104 of Public Law 100-675 as amended been satisfied. Water delivered to MWD pursuant to Section 7.6 of the October 10, 2003 Allocation Agreement.
- 5/ Water conserved by (i) IID and transferred to SDCWA, in accordance with the CRWDA, Exhibit B, Column 5, and the IID/SDCWA Water Transfer Agreement and (ii) water allocated to SDCWA as a result of the CCLP pursuant to Article 10 of the October 10, 2003 Allocation Agreement. At SDCWA's election, the water was delivered by the Secretary to Lake Havasu under Article 4(c) of the CRWDA and there made available by SDCWA to MWD under the terms of the SDCWA/MWD Exchange Agreement.
- 6/ Reported as an annual total only, distributed monthly according to the monthly use patterns of nearby users.
- 7/ A new inclusion for the Fort Yuma Indian Tribe in California. These figures represent an estimate of the amount of diversions required by the Tribe to provide domestic water service for users within the reservation.
- 8/ Unassigned measured returns include drainage from the Indian Unit and the Bard Unit in the Reservation Division but excludes seepage from the AAC..
- 9/ Diversions totaling 50 acre-feet were made from the AAC to supply water for the construction of the Quechan casino along Interstate 8 near Algodones Road. This water was diverted downstream of the gate at station 1117. The IID diversion for the month of December has been reduced by this amount.
- 10/ This entry represents water conserved by IID and transferred to SDCWA, in accordance with CRWDA, Exhibit B, Column 7, and the IID/SDCWA Water Transfer Agreement, as amended. Water subject to temporary re-regulation was captured and temporarily stored by IID in the Salton Sea at Reclamation's request in 2004 and 2005. In 2007, 2,356 af of the temporarily re-regulated water was restored to the system through IID reduced diversions pursuant to Exhibit B Column 7 of the CRWDA. The use of this water does not constitute California agricultural usage for the purposes of meeting the ISG target.
- 11/ Details can be found on the California Supplemental page.

CALIFORNIA SUPPLEMENTAL TABULATION  
CALENDAR YEAR 2007  
STATE OF CALIFORNIA

WATER USER	12/22/08		(ACRE-FEET)												
	USGS #	1/	JAN	FEB	MAR	APR	MAY	JUN	JUL	AUG	SEP	OCT	NOV	DEC	TOTAL
De Soto Ranch	2/	CEW-17	0	0	0	0	0	0	0	0	0	0	0	0	0
De Soto Ranch	2/	CEW-18	0	0	0	0	0	0	0	0	0	0	0	0	0
Southern California Gas Company	3/	CEW-21	3	3	5	5	6	8	8	8	6	5	4	4	65
Pacific Gas & Electric Company	3/		13	17	23	25	30	37	40	39	30	25	18	18	315
Havasu Water Company	3/	Needles rpt.	2	3	3	3	4	5	5	5	4	3	3	2	42
Vista Del Lago (was J. Victor Construction)	3/	Needles rpt.	0	0	0	1	1	1	1	2	2	2	1	1	12
Wells reported under non-Federal subcontracts to LCWSP	3/	Needles rpt.	7	8	12	12	15	18	20	19	15	13	10	9	158
SUBTOTALS, DAVIS DAM TO PARKER DAM	4/	DIVERSION	25	31	43	46	56	69	74	73	57	48	36	34	592
	3a/	MEAS. RETURNS	8	10	14	15	19	23	25	24	20	16	11	11	196
		UNMEAS. RETURNS	4	4	6	6	8	10	10	11	8	7	6	5	85
		CONSUMPTIVE USE	13	17	23	25	29	36	39	38	29	25	19	18	311
Wetmore, Kenneth C.			0	0	0	1	1	1	1	1	0	0	0	0	5
Williams, Jerry O. & Deloris P.			0	0	0	0	0	0	1	0	0	0	0	0	1
Carney, Jerome D.			0	0	0	0	0	1	0	0	0	0	0	0	1
Wetmore, Mark M.			0	0	1	1	1	1	1	1	1	1	1	0	9
Citrus Ranch	2/	CEW-16	2	2	3	3	3	4	4	4	4	3	2	2	36
Lake Enterprises of California			1	1	1	1	3	2	2	3	1	1	1	2	19
BLM Permittees (LHFO & YFO)	3/5/		28	28	33	49	39	54	45	58	45	34	34	33	480
SUBTOTALS, PARKER DAM TO IMPERIAL DAM	4/	DIVERSION	31	31	38	55	47	63	54	67	51	39	38	37	551
		BLM UNMEAS. RETURNS	6	6	7	13	10	13	12	14	11	8	9	9	118
		UNMEAS. RETURNS	1	1	2	3	4	4	4	4	3	2	2	2	32
		CONSUMPTIVE USE	24	24	29	39	33	46	38	49	37	29	27	26	401
<b>FORT YUMA IR - CA</b>															
Valdez, Mike	2/	CDP-1, 2, CEW-1	43	53	73	79	96	117	127	122	96	81	57	56	1,000
Fort Yuma Indian Tribe (Steve Alameda)	2/	CEW-2, CDP-3	0	0	0	0	0	0	0	0	0	0	0	0	0
Valdez, Mike	2/	CEW-3, CDP-4, CDW-1	133	167	228	246	300	363	398	383	301	251	179	176	3,125
MivCo Packing	2/	CEW-14	37	47	64	69	84	102	111	107	84	71	50	49	875
Valdez, Mike	2/	CEW-15	0	0	0	0	0	0	0	0	0	0	0	0	0
Ranch "5" Lands, Yuma Island, CA (351 ac)	6/	AAC diversion	110	84	121	168	254	94	313	60	120	110	211	59	1,704
Huerta Packing	2/	CDP-6/7	0	0	0	0	0	0	0	0	0	0	0	0	0
Quechan Hotel and Casino	7/	AAC diversion	0	0	0	0	0	0	0	0	0	8	21	21	50
SUM OF PUMPING ON FYIR - CA	4/	DIVERSION	323	351	486	562	734	676	949	672	601	521	518	361	6,754
SUM OF UNMEAS. RETURNS, FYIR - CA		UNMEAS. RETURNS	144	157	217	251	328	302	424	300	269	229	222	152	2,995
<b>YUMA ISLAND - CA</b>															
Arizona State Land Department Lessees															
Martin Family Trust	2/	CEP-01,02, CDW-07	35	43	59	64	78	95	103	99	78	65	47	46	812
Billy Turner	2/	CEW-08, CEP-03, CDW-07	31	38	52	57	69	84	90	88	69	58	43	40	719
Leroy Heile	2/	CDEW-01, CEW-07, CDW-06	51	63	86	93	114	139	151	145	114	97	68	67	1,188
James Williams	2/	CDW-5	11	14	19	21	25	31	33	32	25	21	16	15	263
Griffin Produce Company	2/	CEW-04,05, CDW-03	68	85	116	125	153	186	203	195	153	128	92	90	1,594
Perez Family Trust	2/	CEW-06, CDW-04	36	45	61	66	81	98	107	103	81	68	50	48	844
Clifford Winton Jr.	2/8/		10	13	17	19	23	28	30	29	23	19	14	13	238
Clara Jean Wilson	2/8/		11	13	18	20	24	29	32	31	24	20	14	14	250
Lou Ella Harp	2/8/		28	34	47	51	62	75	82	79	62	52	37	35	644
Robert E. Harp	2/8/		19	24	33	35	43	52	58	55	43	36	27	25	450
Leroy Heile	2/	CDW-8	31	38	52	57	69	84	91	88	69	58	43	39	719
K.H. Easterday	2/	CEW-10,22	49	62	84	91	111	135	147	142	111	93	66	65	1,156
Wilson Farms	2/	CEW-11	15	18	25	27	33	40	44	42	33	28	20	19	344
R. Harp	2/	CDW-2	33	42	57	61	75	91	99	96	75	63	45	44	781
Dees, Alex	2/	CEW-9	47	58	80	85	105	128	139	134	105	88	63	62	1,094
Mike Palmer (Power, L.O.)	2/	CEW-13	0	0	0	0	0	0	0	0	0	0	0	0	0
SUM OF PUMPING ON YUMA ISLAND - CA	4/	DIVERSION	475	590	806	872	1,065	1,295	1,409	1,358	1,065	894	645	622	11,096
SUM OF UNMEAS. RETURNS, YUMA ISLAND - CA		UNMEAS. RETURNS	212	264	360	390	476	579	630	607	476	400	288	278	4,960

CALIFORNIA SUPPLEMENTAL TABULATION  
CALENDAR YEAR 2007  
STATE OF CALIFORNIA

12/22/08		(ACRE-FEET)													
WATER USER	USGS # 1/	JAN	FEB	MAR	APR	MAY	JUN	JUL	AUG	SEP	OCT	NOV	DEC	TOTAL	
SUBTOTALS, ALL USES BELOW IMPERIAL DAM		DIVERSION	798	941	1,292	1,434	1,799	1,971	2,358	2,030	1,666	1,415	1,163	983	17,850
		MEAS. RETURNS	0	0	0	0	0	0	0	0	0	0	0	0	
		UNMEAS. RETURNS	356	421	577	641	804	881	1,054	907	745	629	510	430	7,955
		CONSUMPTIVE USE	442	520	715	793	995	1,090	1,304	1,123	921	786	653	553	9,895
=====		=====													
TOTAL CALIFORNIA SUPPLEMENTAL TABULATION		DIVERSION	854	1,003	1,373	1,535	1,902	2,103	2,486	2,170	1,774	1,502	1,237	1,054	18,993
		MEAS. RETURNS	8	10	14	15	19	23	25	24	20	16	11	11	196
		UNMEAS. RETURNS	367	432	592	663	826	908	1,080	936	767	646	527	446	8,190
		CONSUMPTIVE USE	479	561	767	857	1,057	1,172	1,381	1,210	987	840	699	597	10,607

**Footnotes:**

1/ Reference number listed on the annual USGS Yuma Field Office report "Pumped Diversions From The Colorado River and Adjacent Floodplain" or the column contains a comment.

2/ Calculated by assuming an annual diversion rate of 6.25 af per acre.

3/ Tabulated use is offset by pumping from the LCWSP. Details shown in the LCWSP Section of this report.

3a/ This measured return is provided to Pacific Gas & Electric Company alone for water that has been diverted and reinjected as part of its Topock Groundwater Remediation Project.

4/ Monthly and annual totals rounded to the nearest whole number.

5/ At the request of BLM, site specific unmeasured return flow factors have been developed and applied in CA.

6/ Surface water diversions from the AAC through Bard Water District. Diversion calculated by prorating total measured delivery by irrigated acreage in each state.

Bard Water District diversion has been reduced by the total delivery to Ranch 5 in AZ and CA.

7/ Water pumped from the AAC down stream of the Station 1117 gage. IID and CVWD have had their diversions reduced accordingly. No return flow was provided for this diversion as it was used principally for dust control.

8/ Acreage irrigated by co-mingled diversions from multiple wells. Diversion calculated by acreage factor outlined in footnote 2/ above.

DIVERSIONS FROM MAINSTREAM-AVAILABLE RETURN FLOW  
AND CONSUMPTIVE USE OF SUCH WATER  
CALENDAR YEAR 2007  
STATE OF NEVADA

		(ACRE-FEET)												
		12/22/08												
WATER USER		JAN	FEB	MAR	APR	MAY	JUN	JUL	AUG	SEP	OCT	NOV	DEC	TOTAL 1/
BOULDER CANYON PROJECT														
DIVERSION AT HOOVER DAM														
	DIVERSION	3	3	4	4	5	5	6	6	5	6	5	4	56
	MEAS. RETURNS	2	3	3	4	4	3	4	4	3	4	3	3	40
	UNMEAS. RETURNS	0	0	0	0	0	0	0	0	0	0	0	0	0
	CONSUMPTIVE USE	1	0	1	0	1	2	2	2	2	2	2	1	16
ROBERT B. GRIFFITH WATER PROJECT														
DIVERSION AT SADDLE ISLAND, LAKE MEAD														
	DIVERSION	30,461	28,472	37,990	38,731	47,125	47,795	52,037	48,047	39,540	43,187	36,345	34,574	484,304
LAKE MEAD NATIONAL RECREATION AREA														
DIVERSIONS FROM LAKE MEAD														
	DIVERSION	40	36	35	36	53	54	65	72	66	58	55	39	609
	MEAS. RETURNS	0	0	0	0	0	0	0	0	0	0	0	0	0
	UNMEAS. RETURNS	0	0	0	0	0	0	0	0	0	0	0	0	0
	CONSUMPTIVE USE	40	36	35	36	53	54	65	72	66	58	55	39	609
LAKE MEAD NATIONAL RECREATION AREA														
DIVERSION FROM LAKE MOHAVE														
(COTTONWOOD COVE)														
	DIVERSION	17	15	17	17	20	20	17	33	30	27	26	20	259
	MEAS. RETURNS	0	0	0	0	0	0	0	0	0	0	0	0	0
	UNMEAS. RETURNS	0	0	0	0	0	0	0	0	0	0	0	0	0
	CONSUMPTIVE USE	17	15	17	17	20	20	17	33	30	27	26	20	259
BASIC MANAGEMENT INC.														
DIVERSION AT LAKE MEAD														
	DIVERSION	417	344	374	396	534	513	525	620	581	540	368	484	5,696
	MEAS. RETURNS	0	0	0	0	0	0	0	0	0	0	0	0	0
	UNMEAS. RETURNS	0	0	0	0	0	0	0	0	0	0	0	0	0
	CONSUMPTIVE USE	417	344	374	396	534	513	525	620	581	540	368	484	5,696
CITY OF HENDERSON														
DIVERSION AT LAKE MEAD														
	DIVERSION	768	485	1,027	1,514	1,975	1,485	1,854	1,343	1,210	1,039	1,056	995	14,751
	MEAS. RETURNS	0	0	0	0	0	0	0	0	0	0	0	0	0
	UNMEAS. RETURNS	0	0	0	0	0	0	0	0	0	0	0	0	0
	CONSUMPTIVE USE	768	485	1,027	1,514	1,975	1,485	1,854	1,343	1,210	1,039	1,056	995	14,751
NEVADA DEPARTMENT OF FISH & GAME														
DIVERSION AT LAKE MEAD														
	DIVERSION	455	355	287	105	89	32	5	0	0	8	8	4	1,348
	MEAS. RETURNS	454	354	286	104	88	31	4	0	0	7	7	3	1,338
	UNMEAS. RETURNS	0	0	0	0	0	0	0	0	0	0	0	0	0
	CONSUMPTIVE USE	1	1	1	1	1	1	1	0	0	1	1	1	10
PACIFIC COAST BUILDING PRODUCTS INC.														
DIVERSION AT GYPSUM WASH, LAKE MEAD														
	DIVERSION	71	72	72	70	78	74	70	60	60	72	73	50	822
	MEAS. RETURNS	0	0	0	0	0	0	0	0	0	0	0	0	0
	UNMEAS. RETURNS	0	0	0	0	0	0	0	0	0	0	0	0	0
	CONSUMPTIVE USE	71	72	72	70	78	74	70	60	60	72	73	50	822
MOHAVE GENERATING STATION (SCE)														
PUMPED FROM 1 WELL														
	DIVERSION	21	9	5	5	29	41	51	54	55	48	37	41	396
	MEAS. RETURNS	0	0	0	0	0	0	0	0	0	0	0	0	0
	UNMEAS. RETURNS	0	0	0	0	0	0	0	0	0	0	0	0	0
	CONSUMPTIVE USE	21	9	5	5	29	41	51	54	55	48	37	41	396
BIG BEND WATER DISTRICT														
	DIVERSION	326	305	363	382	429	456	475	474	421	392	340	290	4,653
	MEAS. RETURNS	193	195	225	225	225	233	258	249	223	217	203	180	2,626
	UNMEAS. RETURNS	0	0	0	0	0	0	0	0	0	0	0	0	0
	CONSUMPTIVE USE	133	110	138	157	204	223	217	225	198	175	137	110	2,027
FORT MOJAVE INDIAN RESERVATION														
PUMPED FROM 2 WELLS IN FLOODPLAIN														
	DIVERSION	114	424	338	597	658	308	239	294	550	197	393	159	4,271
	MEAS. RETURNS	0	0	0	0	0	0	0	0	0	0	0	0	0
	UNMEAS. RETURNS	38	140	112	197	217	102	79	97	182	65	130	52	1,411
	CONSUMPTIVE USE	76	284	226	400	441	206	160	197	368	132	263	107	2,860
LAS VEGAS WASH RETURN FLOWS														
	RETURNS	19,189	17,238	18,200	16,803	16,131	15,010	16,165	17,224	18,338	18,965	19,071	19,104	211,438

DIVERSIONS FROM MAINSTREAM-AVAILABLE RETURN FLOW  
AND CONSUMPTIVE USE OF SUCH WATER  
CALENDAR YEAR 2007  
STATE OF NEVADA

WATER USER	12/22/08	(ACRE-FEET)												TOTAL 1/
		JAN	FEB	MAR	APR	MAY	JUN	JUL	AUG	SEP	OCT	NOV	DEC	
<b>NEVADA TOTALS</b>														
	DIVERSION	32,693	30,520	40,512	41,857	50,995	50,783	55,344	51,003	42,518	45,574	38,706	36,660	517,165
	MEAS. RETURNS	19,838	17,790	18,714	17,136	16,448	15,277	16,431	17,477	18,564	19,193	19,284	19,290	215,442
	UNMEAS. RETURNS	38	140	112	197	217	102	79	97	182	65	130	52	1,411
	CONSUMPTIVE USE	12,817	12,590	21,686	24,524	34,330	35,404	38,834	33,429	23,772	26,316	19,292	17,318	300,312
<b>GROUNDWATER INJECTED STORAGE</b>														
LAS VEGAS VALLEY WATER DIST.	4/													
	INJECTED	2,283	1,373	1,819	76	0	0	0	0	0	1,360	4,445	6,660	18,016
	WITHDRAWN	0	0	0	0	0	0	0	58	640	296	183	48	1,225
CITY OF NORTH LAS VEGAS														
	INJECTED	0	0	0	0	0	0	0	0	0	0	0	0	0
	WITHDRAWN	0	0	0	0	0	0	0	0	0	0	0	0	0

NOTE: The term 'CONSUMPTIVE USE' in this tabulation means diversions including underground pumping, less measured return flow and less current estimated unmeasured return flow to the river.

**Footnotes:**

1/ Totals may differ from the sum of the monthly values due to rounding to the nearest acre-foot.

2/ Diversions derived by a combination of measurements and user provided data. Beginning in 2007, diversions were fully measured and reported by Reclamation or the water purveyor.

3/ Estimated return based on historic use method adopted by the task force on unmeasured return flows on August 28, 1984 and revised as noted in the Reclamation letter to SNWA and CRCN dated July 29, 2003.

4/ Nevada Injected Storage Balance:

A/ Beginning of Year Cumulative Injected Storage	330,190
Plus Current Year Additions	18,016
Minus Current Year Withdrawals	1,225
End of Year Cumulative Injected Storage	346,981

A/ Colorado River water injected into ground water storage is accounted for as a consumptive use in the year in which it is diverted from the Colorado River. It will not be accounted for as a consumptive use in the year in which it is withdrawn from storage, but because it originated as Colorado River water it will be accounted for as a return flow credit in the year in which it returns to the Colorado River.



**RECORDS OF RELEASES OF MAINSTREAM WATER PURSUANT TO ORDERS  
THEREFOR BUT NOT DIVERTED BY PARTY ORDERING THE SAME, AND THE  
QUANTITY OF SUCH WATER DELIVERED TO MEXICO IN SATISFACTION OF THE  
MEXICAN TREATY OR DIVERTED BY OTHERS; IN ACCORDANCE WITH ARTICLE V(C)  
OF THE CONSOLIDATED DECREE OF THE UNITED STATES SUPREME COURT IN  
*ARIZONA V. CALIFORNIA, 547 U.S. 150 (2006)***

The following tabulations for calendar year 2007 show records of releases of mainstream water pursuant to orders therefor but not diverted by the party ordering the same (rejected water), and the quantity of such water delivered to Mexico in satisfaction of the Mexican Treaty or diverted by others in satisfaction of decreed rights. In addition to the requirements of the Decree, Reclamation tabulated quantities of such rejected water passing to Mexico in excess of treaty requirements and quantities captured in storage in federally operated facilities.

Water ordered but not diverted was analyzed daily for each diverter as the difference between the approved daily order and the mean daily delivery on the day the diversion was made. The monthly quantities shown on the tabulations are the sum of the daily quantities. Daily orders are provided to Reclamation in advance of the delivery date by the amount of time required for water to travel between the storage location and the user's point of diversion from the mainstream. To the extent possible, water ordered but not diverted was delivered to others in satisfaction of their rights. Any remaining water ordered but not diverted was apportioned between delivery to storage, delivery to Mexico in satisfaction of treaty requirements and finally, to Mexico in excess of treaty requirements.

The water users included in this tabulation are the major water users from which Reclamation receives a daily water order, and with the exception of CAP and MWD, are those which divert their water downstream of Parker Dam. Currently, no daily orders are received from Nevada for diversion from the Colorado River therefore no sheet is included for Nevada. In addition, the storage capacity of Lake Mead is large enough in relation to the present daily diversions from the reservoir by Nevada that any water ordered but not diverted would be retained for future use and would not pass to Mexico in excess of treaty requirements.

Should the reader compare the sum of the water ordered but not diverted, which is delivered to Mexico in excess of treaty requirements tabulated below to the figure presented in the next section of this report, Article V (D), they will find that the totals do not match. This is a result of differences in the data provided to Reclamation and the method for summing the information. In this section, Reclamation sums the amount of water calculated to have been delivered to Mexico in excess of treaty requirements only. In the following section, the excess delivery data is supplied by the IBWC and represents the sum of daily deliveries in excess of treaty requirements and daily under deliveries to Mexico. The figures in the next section will typically be lower than in this section.

RELEASE OF MAINSTREAM WATER PURSUANT TO ORDERS  
 BUT NOT DIVERTED BY PARTY ORDERING SAME AND  
 QUANTITY OF SUCH WATER DELIVERED TO MEXICO IN SATISFACTION OF MEXICAN TREATY OR DIVERTED BY OTHERS  
 CALENDAR YEAR 2007  
 STATE OF ARIZONA

12/22/08	(ACRE-FEET)													
WATER USER	1/	JAN	FEB	MAR	APR	MAY	JUN	JUL	AUG	SEP	OCT	NOV	DEC	TOTAL
CENTRAL ARIZONA PROJECT, DIVERSION AT LAKE HAVASU														
ORDERED BUT NOT DIVERTED		1,375	828	4,303	7,377	652	19,342	1,014	837	791	3,882	2,137	591	43,130
DELIVERED TO MEXICO IN														
SATISFACTION OF TREATY														
DIVERTED BY OTHERS														
DELIVERED TO STORAGE	2/	1,375	828	4,303	7,377	652	19,342	1,014	837	791	3,882	2,137	591	43,130
FLOWS TO MEXICO IN														
EXCESS OF TREATY		0	0	0	0	0	0	0	0	0	0	0	0	0
CO. RIVER INDIAN RESERVATION, DIVERSION AT HEADGATE ROCK														
ORDERED BUT NOT DIVERTED		1,579	2,674	3,402	3,263	3,443	3,556	3,513	3,644	4,070	1,924	2,366	9,646	43,080
DELIVERED TO MEXICO IN		1,090	823	878	861	609	868	1,355	1,397	2,358	868	1,726	4,941	17,775
SATISFACTION OF TREATY														
DIVERTED BY OTHERS		110	965	1,748	1,661	2,404	1,971	1,418	1,623	1,120	351	327	3,431	17,130
DELIVERED TO STORAGE	2/	306	835	729	595	404	635	672	547	426	389	274	844	6,655
FLOWS TO MEXICO IN														
EXCESS OF TREATY		73	51	46	145	27	82	68	76	166	317	39	430	1,520
NORTH GILA VALLEY I.D.D., DIVERSION AT IMPERIAL DAM														
ORDERED BUT NOT DIVERTED		579	1,443	569	494	632	796	1,165	236	190	1,887	1,998	1,532	11,520
DELIVERED TO MEXICO IN		175	489	160	146	139	133	532	129	58	780	1,152	633	4,527
SATISFACTION OF TREATY														
DIVERTED BY OTHERS		155	612	373	249	428	569	421	88	61	447	587	639	4,629
DELIVERED TO STORAGE	2/	212	331	33	50	57	87	185	12	46	411	227	185	1,836
FLOWS TO MEXICO IN														
EXCESS OF TREATY		36	11	3	48	8	7	29	6	26	248	31	74	527
GILA MONSTER FARM														
DIVERSION AT IMPERIAL DAM														
ORDERED BUT NOT DIVERTED		1,041	920	847	852	716	239	423	407	414	831	1,192	1,502	9,384
DELIVERED TO MEXICO IN		472	376	285	276	76	53	148	171	177	326	593	540	3,494
SATISFACTION OF TREATY														
DIVERTED BY OTHERS		382	338	422	432	579	108	176	160	128	210	464	701	4,102
DELIVERED TO STORAGE	2/	155	195	126	113	53	73	91	46	86	178	119	176	1,412
FLOWS TO MEXICO IN														
EXCESS OF TREATY		31	11	13	32	8	5	7	30	23	117	15	85	377
WELLTON-MOHAWK I.D.D., DIVERSION AT IMPERIAL DAM														
ORDERED BUT NOT DIVERTED		7,306	6,741	3,666	5,447	4,133	3,917	14,055	11,227	5,149	7,394	13,331	10,906	93,273
DELIVERED TO MEXICO IN		3,312	3,483	2,140	1,785	510	1,113	6,296	5,841	2,713	3,045	6,886	5,141	42,265
SATISFACTION OF TREATY														
DIVERTED BY OTHERS		2,242	1,909	422	2,174	2,917	1,680	3,910	2,672	1,781	1,603	4,745	3,859	29,913
DELIVERED TO STORAGE	2/	1,217	1,298	1,016	1,058	669	999	3,513	2,040	473	2,001	1,497	939	16,719
FLOWS TO MEXICO IN														
EXCESS OF TREATY		535	52	88	430	38	126	337	674	181	745	203	968	4,376
YUMA IRRIGATION DISTRICT, DIVERSION AT IMPERIAL DAM														
ORDERED BUT NOT DIVERTED		623	562	270	559	506	407	804	345	1,046	787	1,918	2,451	10,279
DELIVERED TO MEXICO IN		270	139	116	165	72	142	308	226	463	330	971	1,204	4,405
SATISFACTION OF TREATY														
DIVERTED BY OTHERS		152	236	115	241	361	223	292	101	340	138	686	759	3,645
DELIVERED TO STORAGE	2/	168	178	39	94	55	34	185	10	201	214	226	266	1,672
FLOWS TO MEXICO IN														
EXCESS OF TREATY		33	9	0	59	19	8	18	8	41	105	35	222	558

RELEASE OF MAINSTREAM WATER PURSUANT TO ORDERS  
 BUT NOT DIVERTED BY PARTY ORDERING SAME AND  
 QUANTITY OF SUCH WATER DELIVERED TO MEXICO IN SATISFACTION OF MEXICAN TREATY OR DIVERTED BY OTHERS  
 CALENDAR YEAR 2007  
 STATE OF ARIZONA

12/22/08

(ACRE-FEET)

WATER USER	1/	JAN	FEB	MAR	APR	MAY	JUN	JUL	AUG	SEP	OCT	NOV	DEC	TOTAL
YUMA MESA I.D.D., DIVERSION AT IMPERIAL DAM														
ORDERED BUT NOT DIVERTED		4,593	5,196	2,132	1,684	434	1,541	480	1,702	5,911	8,764	8,623	8,070	49,131
DELIVERED TO MEXICO IN		2,816	2,505	629	429	41	359	230	663	3,008	4,152	4,711	2,104	21,646
SATISFACTION OF TREATY														
DIVERTED BY OTHERS		664	1,505	1,218	697	307	1,132	126	524	1,528	1,576	2,672	4,892	16,841
DELIVERED TO STORAGE	2/	1,057	1,131	255	490	67	34	98	492	881	1,953	1,116	1,014	8,588
FLOWS TO MEXICO IN														
EXCESS OF TREATY		56	55	30	68	19	15	26	23	494	1,084	124	60	2,055
UNIT "B" I.D.D., DIVERSION AT IMPERIAL DAM														
ORDERED BUT NOT DIVERTED		176	720	495	672	386	357	461	744	814	361	545	980	6,710
DELIVERED TO MEXICO IN		121	369	103	234	17	62	178	368	462	150	311	411	2,786
SATISFACTION OF TREATY														
DIVERTED BY OTHERS		24	174	283	389	324	233	191	304	185	69	159	438	2,773
DELIVERED TO STORAGE	2/	27	162	104	28	45	57	84	21	106	122	58	125	939
FLOWS TO MEXICO IN														
EXCESS OF TREATY		4	16	5	20	0	5	7	51	61	20	16	6	211
YUMA COUNTY WATER USERS' ASSN., DIVERSION AT IMPERIAL DAM														
ORDERED BUT NOT DIVERTED		6,061	8,354	4,039	3,141	7,003	3,297	6,572	6,712	3,756	7,855	9,669	11,820	78,278
DELIVERED TO MEXICO IN		2,577	4,311	1,532	891	1,628	589	2,393	3,134	1,647	3,410	5,262	5,907	33,280
SATISFACTION OF TREATY														
DIVERTED BY OTHERS		2,332	2,761	1,769	1,090	4,488	2,121	2,283	2,090	1,322	1,805	3,269	3,319	28,650
DELIVERED TO STORAGE	2/	880	1,218	685	852	798	554	1,761	1,197	526	1,656	1,040	1,582	12,749
FLOWS TO MEXICO IN														
EXCESS OF TREATY		273	64	52	308	90	34	135	290	261	984	98	1,012	3,600
=====														
ARIZONA TOTALS														
ORDERED BUT NOT DIVERTED		23,334	27,437	19,721	23,489	17,907	33,453	28,488	25,854	22,141	33,684	41,778	47,499	344,784
DELIVERED TO MEXICO IN		10,833	12,495	5,843	4,787	3,091	3,319	11,440	11,929	10,887	13,060	21,612	20,882	130,178
SATISFACTION OF TREATY														
DIVERTED BY OTHERS		6,061	8,499	6,351	6,934	11,808	8,037	8,817	7,563	6,465	6,198	12,910	18,037	107,682
DELIVERED TO STORAGE	2/	5,397	6,176	7,290	10,658	2,800	21,815	7,604	5,203	3,537	10,804	6,695	5,721	93,701
FLOWS TO MEXICO IN														
EXCESS OF TREATY	3/	1,042	268	237	1,109	207	281	627	1,159	1,252	3,622	561	2,858	13,224

1/ This tabulation includes the users who provide Reclamation with a daily diversion schedule.

2/ Available for future use.

3/ The summation of actual flows to Mexico greater than Mexico's daily water schedule resulting from water ordered but not diverted.



RELEASE OF MAINSTREAM WATER PURSUANT TO ORDERS  
 BUT NOT DIVERTED BY PARTY ORDERING SAME AND  
 QUANTITY OF SUCH WATER DELIVERED TO MEXICO IN SATISFACTION OF MEXICAN TREATY OR DIVERTED BY OTHERS  
 CALENDAR YEAR 2007  
 STATE OF CALIFORNIA

12/22/08

(ACRE-FEET)

WATER USER	1/	JAN	FEB	MAR	APR	MAY	JUN	JUL	AUG	SEP	OCT	NOV	DEC	TOTAL
------------	----	-----	-----	-----	-----	-----	-----	-----	-----	-----	-----	-----	-----	-------

1/ This tabulation includes the users who provide Reclamation with a daily diversion schedule.

2/ Available for future use.

3/ The summation of actual flows to Mexico greater than Mexico's daily water schedule resulting from water ordered but not diverted.

**RECORDS OF DELIVERIES TO MEXICO OF WATER  
IN SATISFACTION OF THE TREATY OF FEBRUARY 3, 1944  
AND WATER PASSING TO MEXICO IN EXCESS OF  
TREATY REQUIREMENTS IN ACCORDANCE WITH  
ARTICLE V (D) OF THE CONSOLIDATED DECREE OF THE UNITED STATES  
SUPREME COURT IN *ARIZONA V. CALIFORNIA*, 547 U.S. 150 (2006)**

WATER USER	12/22/08	CALENDAR YEAR 2007												TOTAL
		JAN	FEB	MAR	APR	MAY	JUN	JUL	AUG	SEP	OCT	NOV	DEC	
DELIVERY TO NIB	1/	112,500	138,220	191,216	186,761	97,902	107,652	111,155	86,246	79,921	65,639	89,356	114,804	1,381,372
DELIVERY AT THE LIMITROPHE	2/	811	773	685	314	507	489	639	589	831	767	871	872	8,148
DELIVERY FOR TIJUANA	3/	0	0	0	0	0	0	0	0	0	0	0	0	0
DELIVERY TO SIB		9,347	10,479	10,954	10,683	10,869	9,792	11,589	10,103	11,066	13,641	12,757	10,803	132,083
TOTAL DELIVERY TO MEXICO	4/	122,658	149,472	202,855	197,758	109,278	117,933	123,383	96,938	91,818	80,047	102,984	126,479	1,521,603
TO MEXICO IN SATISFACTION OF TREATY		121,599	149,057	202,851	195,427	108,570	117,676	122,860	95,471	89,307	74,721	102,966	119,495	1,500,000
TO MEXICO IN EXCESS OF TREATY	5/	1,059	415	4	2,331	708	257	523	1,467	2,511	5,326	18	6,984	21,603
WATER BYPASSED PURSUANT TO MINUTE 242 OF THE IBWC		9,038	8,239	7,985	7,693	8,189	8,599	8,756	8,628	8,913	9,001	9,625	10,610	105,276

**Footnotes:**

1/ Flow in the river at the Northerly International Boundary.

2/ Wasteway deliveries to the river limitrophe via the Cooper, 11 mile, and 21 mile lateral wasteways and diversion channel in satisfaction of the 1944 Treaty requirements.

3/ Temporary emergency delivery of Colorado River water for Tijuana is diverted at Lake Havasu by MWD and delivered via the Colorado River Aqueduct,

MWD, SDCWA, and Otay Water District's distribution systems pursuant to Minute No. 310 of the IBWC.

4/ Water delivered to Mexico and charged against treaty requirements. This does not include Water Bypassed Pursuant to Minute No. 242 of the IBWC.

5/ Water passing to Mexico in excess of Mexico's daily schedule. Sum of daily differences between actual flows to Mexico and Mexico's total schedule.

**RECORDS OF DIVERSIONS OF WATER FROM THE  
MAINSTREAM OF THE GILA AND SAN FRANCISCO RIVERS  
AND THE CONSUMPTIVE USE OF SUCH WATER, FOR THE BENEFIT  
OF THE GILA NATIONAL FOREST IN ACCORDANCE WITH  
ARTICLE V (E) OF THE CONSOLIDATED DECREE OF THE UNITED STATES  
SUPREME COURT IN *ARIZONA V. CALIFORNIA*, 547 U.S. 150 (2006)**

12/22/08		CALENDAR YEAR 2007												TOTAL
		(ACRE-FEET)												
WATER USER		JAN	FEB	MAR	APR	MAY	JUN	JUL	AUG	SEP	OCT	NOV	DEC	
GILA RIVER	DIVERSION	0	0	0	0	0	0	0	0	0	0	0	0	0
	CONSUMPTIVE USE	0	0	0	0	0	0	0	0	0	0	0	0	0
SAN FRANCISCO RIVER	DIVERSION	0	0	0	0	0	0	0	0	0	0	0	0	0
	CONSUMPTIVE USE	0	0	0	0	0	0	0	0	0	0	0	0	0

# **INFORMATION SUPPLEMENTAL TO THE REQUIREMENTS OF THE CONSOLIDATED DECREE OF THE UNITED STATES SUPREME COURT IN *ARIZONA V. CALIFORNIA*, 547 U.S. 150 (2006)**

The information contained in the following sections of this report is supplemental to the records required by Article V of the Consolidated Decree of the United States Supreme Court in *Arizona v. California*, 547 U.S. 150 (2006). The information tabulated here provides a broader record of activities relating to federal management of the Colorado River in concise reports specific to various agreements or requirements and it is intended to help the reader to connect the records of diversions and consumptive uses to the various conservation, transfer and exchange agreements that they may be involved in. The final section contains documents significant to the actions taken by Reclamation, the Lower Division states, and the water user agencies.



## **INTERSTATE BANKING WITHIN THE STATES OF ARIZONA, CALIFORNIA, AND NEVADA**

Reclamation developed and implemented a rule that establishes the procedural framework for carrying out an interstate water banking program. The rule is codified in 43 CFR, Part 414. Authorized parties may enter into agreements whereby Colorado River water may be stored off stream in one state for future benefit of consuming entities in another state.

Reclamation, on behalf of the Secretary of the Interior (Secretary), executed a Storage and Interstate Release Agreement (SIRA) with the Southern Nevada Water Authority (SNWA), the Colorado River Commission of Nevada (CRCN), and the Arizona Water Banking Authority (AWBA). The SIRA provides structure and guidance, in accordance with Article II(B)(6) of the Consolidated Decree in *Arizona v. California*, 547 U.S.150 (2006) (Consolidated Decree), for the actions the Secretary will take in releasing Colorado River water to a specific entity in order to implement the interstate contractual distribution of water under the interstate banking program.

AWBA, SNWA, and CRCN executed an Interstate Water Banking Agreement that specifies the interstate banking relationship among those parties. This agreement establishes the terms and conditions for the off stream storage of Colorado River water in Arizona and the establishment of long-term storage credits for the benefit of SNWA.

Another element of this interstate banking program is an Agreement for Development of Intentionally Created Unused Apportionment (ICUA) between AWBA and Central Arizona Water Conservation District (CAWCD). CAWCD has obligated itself to accept water recovered by pumping groundwater, represented by Long-Term Storage Credits (LTSC). CAWCD reduces its diversion of Colorado River water through the Central Arizona Project by an equivalent amount, reducing Arizona's Colorado River water consumption. The forbearance creates ICUA that is released by the Secretary for use by SNWA.

Reclamation accounts for Colorado River water diverted for storage in Arizona by AWBA, through CAWCD, as a consumptive use in Arizona in

the year Colorado River water is diverted. LTSC's are created for the account of consuming entities in Nevada or California. When LTSC's are recovered, the consuming entities in Nevada or California, pursuant to the SIRA, will divert Colorado River water in exchange for CAWCD's use of the LTSC's. The Secretary will release ICUA created by AWBA through CAWCD's forbearance to the consuming entity in Nevada or California in that same year pursuant to Article II(B)(6) of the Consolidated Decree. ICUA used in Nevada or California is accounted for as consumptive use of Colorado River water that year and is in addition to the basic apportionment of the state where the use occurs.

CRCN, SNWA, The Metropolitan Water District of Southern California (MWD), and the United States entered into a SIRA under which MWD agreed to store Nevada unused basic apportionment pursuant to Article II (B) (6) of the Consolidated Decree. When SNWA calls upon this stored water, MWD will develop ICUA by withdrawing water previously stored for SNWA and will reduce its diversion of Colorado River water. The ICUA developed by MWD through its reduced diversion of Colorado River water will be released by the Secretary for use by SNWA.

CAWCD stored Colorado River water underground in Arizona under a demonstration project in the early 1990s. CAWCD developed Interstate Underground Storage (IUS) credits. CAWCD assigned IUS credits to SNWA and MWD under the 1992 agreement, as amended between MWD and CAWCD. IUS credits assigned to SNWA were incorporated into the subsequent AWBA, SNWA, CRCN Interstate Water Banking Agreement. Recovery of MWD's credits is subject to the terms of an amended letter agreement dated December 11, 2007.

The following tabulation lists Accumulated Long Term Storage Credits (ALTSC) verified by AWBA, provisional LTSC accrued during the past year, Long Term Storage Credits recovered during the past year, ALTSC held for an entity with a SIRA, and credits assigned to MWD by CAWCD.

INTERSTATE BANKING  
 COLORADO RIVER WATER STORED IN ONE STATE UNDER 43 CFR PART 414  
 FOR THE BENEFIT OF SPECIFIC ENTITIES IN ANOTHER STATE  
 CALENDAR YEAR 2007

12/22/08

(ACRE-FEET)

		Ftnts	JAN	FEB	MAR	APR	MAY	JUN	JUL	AUG	SEP	OCT	NOV	DEC	TOTALS	
NEVADA	Verified BOY ALTSC	1/	412,634													
	Water diverted and stored in Arizona for the benefit of SNWA.	Accrued LTSC in 07	2/	4,688	5,121	6,155	8,584	12,535	3,722	21,886	30,160	14,622	8,783	3,811	3,955	124,022
		Verified LTSC in 07	3/	4,343	4,744	5,702	7,952	11,611	3,448	20,273	27,938	13,545	8,136	3,530	3,664	114,886
		Recovered LTSC in 07	4/	0	0	0	0	0	0	0	0	0	0	0	0	0
		Total ALTSC	5/	416,977	421,721	427,423	435,375	446,986	450,434	470,707	498,645	512,190	520,326	523,856	527,520	527,520
	Water diverted and stored by MWD for the benefit of SNWA.	Verified BOY ALTSC	6/	25,000												
		Accrued LTSC in 07	6/	0	0	0	0	0	0	0	0	0	0	0	0	0
		Verified LTSC in 07		0	0	0	0	0	0	0	0	0	0	0	0	0
		Recovered LTSC in 07	4/6/	0	0	0	0	0	0	0	0	0	0	0	0	0
		Total ALTSC	6/	25,000	25,000	25,000	25,000	25,000	25,000	25,000	25,000	25,000	25,000	25,000	25,000	25,000
AMOUNT OF WATER STORED FOR THE BENEFIT OF NEVADA - CURRENT YEAR			4,343	4,744	5,702	7,952	11,611	3,448	20,273	27,938	13,545	8,136	3,530	3,664	114,886	
CUMULATIVE BALANCE OF WATER STORED FOR NEVADA WITHIN AZ AND CA			7/	441,977	446,721	452,423	460,375	471,986	475,434	495,707	523,645	537,190	548,856	552,520	552,520	
CALIFORNIA	Verified BOY ALTSC	8/	80,909													
	Water diverted and stored in Arizona for the benefit of MWD.	Accrued LTSC in 07	2/	0	0	0	0	0	0	0	0	0	0	0	0	
		Verified LTSC in 07	3/	0	0	0	0	0	0	0	0	0	0	0	0	
		Recovered LTSC in 07	4/	424	181	1,648	756	1,318	1,535	1,481	1,037	1,163	874	504	5,883	16,804
		Total ALTSC	5/8/	80,485	80,304	78,656	77,900	76,582	75,047	73,566	72,529	71,366	70,492	69,988	64,105	64,105
STATES TOTAL	Verified BOY ALTSC	1/	518,543													
	Water stored in AZ & CA for the benefit of Nevada and California Parties.	Accrued LTSC in 07	2/	4,688	5,121	6,155	8,584	12,535	3,722	21,886	30,160	14,622	8,783	3,811	3,955	124,022
		Verified LTSC in 07	3/	4,343	4,744	5,702	7,952	11,611	3,448	20,273	27,938	13,545	8,136	3,530	3,664	114,886
		Recovered LTSC in 07	4/	424	181	1,648	756	1,318	1,535	1,481	1,037	1,163	874	504	5,883	16,804
		Total ALTSC	5/	522,462	527,025	531,079	538,275	548,568	550,481	569,273	596,174	608,556	615,818	618,844	616,625	616,625

**Footnotes:**

- 1/ Accumulated Long-term Storage Credits verified by the banking party before the beginning of the reporting year to be available for recovery by a specific entity with a valid SIRA. Requested Intentionally Created Unused Apportionment cannot exceed verified LTSC.
- 2/ Provisional LTSC accrued during the reporting year for the benefit of a specific consuming entity in Nevada or California with a valid SIRA. Provisional LTSC represent the amount of water diverted from the river and transported to the storage facility. Provisional LTSC have not been verified by AWBA or MWD and are not eligible for certification and recovery. Accruals of LTSC in Arizona for the benefit of consuming entities in Nevada and California are limited to 200 kaf annually.
- 3/ LTSC available for recovery for the storage beneficiary as verified by the AWBA in a letter dated July 25, 2008.
- 4/ LTSC recovered by AWBA or MWD during the reporting year, represented by ICUA that AWBA or MWD have certified to be available and the Secretary has released to a specific entity with a valid SIRA during the same year. The ALTSC are certified by AWBA or MWD when ICUA is requested, and prior to its release by the Secretary of the Interior. Total recovery of ALTSC from AWBA can not exceed 100 kaf annually, due to a limitation defined under Arizona State law. When water is released from storage, Arizona or MWD will be required to reduce its consumptive use under its state apportionment in an amount equal to Nevada's and/or California's requested release and Nevada and/or California will be allowed to utilize the unused apportionment in an amount equal to the ICUA made available.
- 5/ Accumulated Long-term Storage Credits are cumulative monthly sum of verified, or estimated LTSC.
- 6/ In 2004 MWD, SNWA, and the Secretary of the Interior entered into a SIRA to allow MWD to divert and store water for the benefit of SNWA. No water was stored by MWD in 2007, under this agreement. When storage occurs, it must be Nevada unused apportionment, which will require Nevada to reduce its consumptive use by an amount equal to the total storage. When water is released from storage, CA will be required to reduce its consumptive use under its state apportionment in an amount equal to Nevada's requested release and Nevada will be allowed to utilize the unused apportionment in an amount equal to the ICUA made available by California.
- 7/ This cumulative balance includes both the BOY ALTSC balance as verified by AWBA and MWD and the verified LTSC placed into storage during the current year.
- 8/ LTSC banked in CAWCD's name that are recoverable by MWD under the CAWCD/MWD agreement of October 15, 1992, as amended by the CAWCD/AWBA/MWD amended letter agreement of December 11, 2007.

## **INADVERTENT OVERRUNS AND PAYBACKS WITHIN THE STATES OF ARIZONA, CALIFORNIA, AND NEVADA**

For a variety of reasons, a user may inadvertently divert or consumptively use Colorado River water in an amount that exceeds the amount lawfully available to the user (inadvertent overrun). Requirements have now been put in place for the repayment of such overruns.

The Colorado River Water Delivery Agreement (CRWDA) was signed October 10, 2003, by the Secretary of the Interior. Beginning in 2004, certain Districts within California agreed in the CRWDA to begin paybacks to the Colorado River system according to the payback schedule set forth in Exhibit C of the CRWDA in the aggregate amount of accrued overruns for CY 2001 and 2002. The CRWDA permits advance payback.

Reclamation has also implemented an administrative policy that defines inadvertent overruns, establishes procedures to account for the inadvertent overruns, and sets forth the requirements for payback to the Colorado River system.

The Inadvertent Overrun and Payback Policy (IOPP) became effective January 1, 2004, and applies to inadvertent overruns of Colorado River water within the Lower Division states occurring after that date. The policy is set forth in 69 Federal Register 12,201 (2004).

The following tabulation displays two items associated with inadvertent overruns and paybacks: 1) Identification of entitlement holders who have inadvertently overrun since January 1, 2007. The amount of the overrun repayments made to the Colorado River system, and the remaining overrun balance in each user's inadvertent overrun account. 2) The quantity of paybacks made by California parties under Exhibit C of the CRWDA and the remaining balance in each Exhibit C payback account.

The table titled Exhibit C reproduces Exhibit C from the CRWDA for convenient reference.

OVERRUNS, PAYBACKS, AND OVERRUN ACCOUNT BALANCE <sup>1</sup>  
 CALENDAR YEAR 2007  
 STATE OF ARIZONA

12/22/08		(ACRE-FEET)			
PARTICIPATING ENTITY	ACTION	SPECIFICS	Ftns	APPROVAL	ENTITLEMENT
<b>IOPP Overruns by Individual Water Users</b>				<b>2007</b>	
GILA MONSTER FARMS	IOPP Overruns by Water User	Calendar Year Diversion	2	9,455	8,550
		Calendar Year Overrun - Div.	3	905	8,550
		Calendar Year Overrun - CU		508	
		BOY Overrun Account Balance - Div.	4	1,029	
		Validated Calendar Year Paybacks - Div.	5	606	
		EOY Overrun Account Balance - Div.	6	1,328	
		Account Balance as Percent of Entitlement		15.5%	

**Footnotes:**

- 1/ This section contains tabulations of water use overruns of approved diversions or approved consumptive use amounts in accordance with the Inadvertent Overrun and Payback Policy.
- 2/ The water user's actual diversion or consumptive use as tabulated in the Article V (B) section of this report.
- 3/ The amount of overrun accrued during the current year as determined by comparing the user's approved schedule against the water user's actual diversion or use.
- 4/ The IOPP overrun account balance from the previous year, providing the user had a carry over balance.
- 5/ Paybacks to the Colorado River system made during the current year.
- 6/ The remainder of the IOPP overrun account balance as of the end of the accounting year.

OVERRUNS, PAYBACKS, OVERRUN ACCOUNT BALANCE, AND CRWDA EXHIBIT C PAYBACK <sup>1</sup>  
 CALENDAR YEAR 2007  
 STATE OF CALIFORNIA

12/22/08		(ACRE-FEET)				
PARTICIPATING ENTITY	ACTION	SPECIFICS	Ftnts	TOTAL	APPROVAL	ENTITLEMENT
<b>IOPP Overruns by Individual Water Users</b>				<b>2007</b>		
IMPERIAL IRRIGATION DISTRICT	IOPP Overruns by Water User	Calendar Year CU	2	2,872,754	2,866,396	2,866,396
		Calendar Year Overrun - CU	3	6,358		
		BOY Overrun Account Balance	4	8,957		
		Validated Calendar Year Paybacks	5	1,263		
		EOY Overrun Account Balance	6	14,052		
		Account Balance as Percent of Entitlement		0.5%		
FORT MOJAVE INDIAN RESERVATION - CA	IOPP Overruns by Water User	Calendar Year Diversion	2	21,323	16,720	16,720
		Calendar Year Overrun - Div.	3	4,603		
		Calendar Year Overrun - CU		2,476		
		BOY Overrun Account Balance - Div.	4	2,107		
		Validated Calendar Year Paybacks - Div.	5	0		
		EOY Overrun Account Balance - Div.	6	6,710		
		Account Balance as Percent of Entitlement		40.1%		
<b>Payback of Exhibit C Obligations by Individual Water Users</b>				<b>2007</b>		
IMPERIAL IRRIGATION DISTRICT	Payback of Exhibit C Obligations	BOY Exhibit C Balance	7	34,831	N/A	
		Calendar Year Paybacks	8	34,831		
		EOY Exhibit C Balance	9	0		
COACHELLA VALLEY WATER DISTRICT	Payback of Exhibit C Obligations	BOY Exhibit C Balance	7	18,144	N/A	
		Calendar Year Paybacks	8	7,404		
		EOY Exhibit C Balance	9	10,740		

**Footnotes:**

- 1/ This section contains tabulations of water use overruns of approved diversions or approved consumptive use amounts in accordance with the Inadvertent Overrun and Payback Policy.
- 2/ The water user's actual diversion or consumptive use as tabulated in the Article V (B) section of this report.
- 3/ The amount of overrun accrued during the current year as determined by comparing the user's approved schedule against the water user's actual diversion or use.
- 4/ The IOPP overrun account balance from the previous year, providing the user had a carry over balance.
- 5/ Paybacks to the Colorado River system made during the current year.
- 6/ The remainder of the IOPP overrun account balance as of the end of the accounting year.
- 7/ The Beginning of Year balance of CRWDA, Exhibit C payback obligation. This is equal to the prior year's End of Year balance.
- 8/ Paybacks of CRWDA, Exhibit C obligations made to the Colorado River system during the current year. The minimum payback schedule is tabulated in Exhibit C of the CRWDA.
- 9/ End of Year balance of CRWDA, Exhibit C payback obligation, determined by subtracting current year repayments from the Beginning of Year account balance.

OVERRUNS, PAYBACKS, AND OVERRUN ACCOUNT BALANCE <sup>1</sup>  
 CALENDAR YEAR 2007  
 STATE OF NEVADA

12/22/08		(ACRE-FEET)				
PARTICIPATING ENTITY	ACTION	SPECIFICS	Ftns	TOTAL	APPROVAL	ENTITLEMENT
<b>IOPP Overruns by Individual Water Users</b>				2007		
Southern Nevada Water Authority	IOPP Overruns by Water User	Calendar Year CU	2	300,312	300,000	300,000
		Calendar Year Overrun - CU	3	312		
		BOY Overrun Account Balance	4	0		
		Validated Calendar Year Paybacks	5	0		
		EOY Overrun Account Balance	6	312		
		Account Balance as Percent of Entitlement		0.1%		

**Footnotes:**

- 1/ This section contains tabulations of water use overruns of approved diversions or approved consumptive use amounts in accordance with the Inadvertent Overrun and Payback Policy.
- 2/ The water user's actual diversion or consumptive use as tabulated in the Article V (B) section of this report.
- 3/ The amount of overrun accrued during the current year as determined by comparing the user's approved schedule against the water user's actual diversion or use.
- 4/ The IOPP overrun account balance from the previous year, providing the user had a carry over balance.
- 5/ Paybacks to the Colorado River system made during the current year.
- 6/ The remainder of the IOPP overrun account balance as of the end of the accounting year.

## Exhibit C of the Colorado River Water Delivery Agreement

### Exhibit C: Payback Schedule of Overruns for Calendar Years 2001 and 2002

<i>Year</i>	<i>IID</i>	<i>CVWD</i>	<i>MWD</i>	<i>Total</i>
2004	18,900	9,100	11,000	39,000
2005	18,900	9,100	11,000	39,000
2006	18,900	9,100	11,100	39,100
2007	18,900	9,100	11,100	39,100
2008	18,900	9,200	11,100	39,200
2009	18,900	9,200	11,100	39,200
2010	19,000	9,200	11,100	39,300
2011	19,000	9,200	11,100	39,300
Cumulative	151,400	73,200	88,600	313,200

*Note:* Each district may, at its own discretion, elect to accelerate paybacks to retire its payback obligation before the end of the eight-year period ending in calendar year 2011. Each district's payback obligation is subject to acceleration in anticipation of a shortage in the Lower Colorado River Basin as provided for in section 8(b).

## SUMMARY OF WATER AVAILABILITY AND USE BY STATE

The Secretary of the Interior (Secretary) makes Colorado River water available to the Lower Division states in accordance with Article II of the Consolidated Decree of the United States Supreme Court in *Arizona v. California*, 547 U.S. 150 (2006). Under Article II, the Secretary apportions water to the states under shortage, normal, or surplus conditions, and may release water to a state which was apportioned to but unused by another state.

The amount of Colorado River water available for use in a state is impacted by various agreements and policies. Examples of these agreements and policies are, the interstate storage and release agreements, and the Inadvertent Overrun and Payback Policy (IOPP).

The following tabulation displays the amount of Colorado River water made available to each Lower Division state under Article II of the Decree, the payback by users within the state of obligations under Exhibit C of the Colorado River Water Delivery Agreement or the IOPP, and the total consumptive use within a state. The table demonstrates whether the consumptive use results in an underrun or overrun of the amount of Colorado River water available to each Lower Division state in 2007.



APPORTIONMENTS, ARTICLE II(B)(6) RELEASES, PAYBACKS, AND TOTAL CONSUMPTIVE USE BY STATE <sup>1</sup>  
CALENDAR YEAR 2007

12/22/08

(ACRE-FEET)

STATE	ADJUSTMENTS	Ftns	ACTUAL USE
ARIZONA	Basic Apportionment	2	2,800,000
	NV II(B)(6) Released to AZ for Storage for NV	3	0
	Intentionally Created Unused Apportionment for MWD		(16,804)
	Payback Obligations	4	(340)
	Total Available Colorado River Water	5	2,782,856
	Total Consumptive Use	6	2,783,323
	State Underrun or (Overrun)	7	(467)
	Overruns by Individual AZ Users		508
	Net State Underrun or (Overrun)		41
CALIFORNIA	Basic Apportionment	2	4,400,000
	NV II(B)(6) Released to CA for Storage for NV	3	0
	Intentionally Created Unused Apportionment for MWD		16,804
	System Conservation Water		(7,000)
	Intentionally Created Surplus (MWD or IID)		(2,382)
	LCWSP Under pumping (Over pumping)	8	273
	Early Payback of 2006 Overruns		(1,263)
	Payback Obligations (Exhibit C)	4	(42,235)
	Total Available Colorado River Water	5	4,364,197
	Total Consumptive Use	6	4,370,695
	State Underrun or (Overrun)	7	(6,498)
	Overruns by Individual CA Users		8,834
	Recovery of Re-regulatory water		(2,356)
	Unauthorized Agricultural Use		20
Net State Underrun or (Overrun)		0	
NEVADA	Basic Apportionment	2	300,000
	NV II(B)(6) Available for Storage	3	0
	Payback Obligations	4	0
	Total Available Colorado River Water	5	300,000
	Total Consumptive Use	6	300,312
	State Underrun or (Overrun)	7	(312)
	Overruns by Individual NV Users		312
Net State Underrun or (Overrun)		0	
<b>TOTAL LOWER BASIN UNUSED APPORTIONMENT</b>			<b>41</b>

**Footnotes:**

- 1/ This section tabulates increases or reductions to the amount of water available to a state. It also calculates an adjusted state limitation and compares that amount to the consumptive uses within the state. Adjustments include: releases to or from another state under Article II(B)(6) of the Consolidated Decree in Arizona v. California, payback obligations of individual water users, intentionally created unused apportionment or surplus, and system conservation.
- 2/ The state basic apportionment as described in Article II(B)(1) of the Consolidated Decree.
- 3/ Nevada unused apportionment made available to Arizona and/or California by the Secretary under Article II(B)(6) of the Consolidated Decree for storage in Arizona or California under the appropriate Storage and Interstate Release Agreement.
- 4/ The reduction in the amount of water available to the state due to repayment obligations under the CRWDA or the IOPP.
- 5/ The total amount of Colorado River water available for use in the state.
- 6/ The total consumptive use of Colorado River water within the state as tabulated in the Article V. section of this report.
- 7/ The difference between the Colorado River water available to the state and the state's actual consumptive use.
- 8/ Differences between actual LCWSP wellfield pumping and use of Colorado River water by LCWSP contractors are allowed to be carried over in a given year. In a year when an outstanding LCWSP balance is consumed, LCWSP users are allowed to consumptively use an amount of water greater than the amount pumped by the LCWSP wellfield to offset a previous year(s) overpumpage.

## LOWER COLORADO WATER SUPPLY PROJECT

The Lower Colorado Water Supply Act, enacted by Congress and approved by the President on November 14, 1986, authorized the Lower Colorado Water Supply Project (Project) as part of a water supply exchange program. Water pumped from the Project well field is exchanged for Colorado River water. This program is intended to help meet the domestic, municipal, industrial, and recreational water needs of water users adjacent to the Colorado River in California. The Project well field will assist those water users whose use of water from the Colorado River is either not covered by a contract or is in excess of their present or anticipated needs. Although some California water users have access to surplus water, the use of the Project wells is required when surplus water is unavailable or insufficient to meet the needs of the Project beneficiaries in California. Water for agricultural use is not authorized under the Act.

The Lower Colorado Water Supply Act authorizes construction of wells with a total annual capacity of 10,000 acre-feet. Currently, stage I of the Project has been completed and consists of two wells. The well field began operation on August 1, 2003. The wells are located south of the All-American Canal (AAC) in Imperial County. Ground water from the wells is withdrawn and discharged into the AAC and taken by the Imperial Irrigation District (IID). IID will then forebear the taking of an equal amount of water from the Colorado River. Through a contract with Reclamation, IID is responsible for the operation and maintenance of the well field.

Reclamation entered into a contract to supply Project water to the City of Needles in annual amounts up to 3,500 acre-feet of the initial 8,000 acre-feet available. The contract with the City of Needles establishes a framework for the City of Needles to enter into subcontracts for delivery of Project water to non-Federal water users in San Bernardino, Riverside, and Imperial Counties. The Colorado River Board of California (CRBC) makes a recommendation as to whether a non-Federal applicant should be offered a subcontract for a Project water supply and notifies Reclamation. Reclamation reviews the information submitted by CRBC and recommends the approved applicants to the City of Needles which then offers subcontracts.

The Act, as amended in 2005, authorizes the Secretary of the Interior to contract for the use of Project water under terms that the Secretary determines will benefit the interest of Project users along the Colorado River. On March 26, 2007, Reclamation entered into a contract with the City of Needles and the Metropolitan Water District of Southern California (MWD), allowing Stage 1 of the Project to be pumped to its fullest capability, without jeopardizing the Project, to allow MWD to receive as much unused water as is available. Certain monies received from MWD are being deposited in a Water Quality Maintenance Trust Fund to provide for the long-term viability of the Project or its replacement. In 2007, the Project wells were pumped to capacity following execution of the contract and MWD utilized the water that was unused by the other Project beneficiaries.

LOWER COLORADO WATER SUPPLY PROJECT  
SUMMARY OF USES OFFSET BY PUMPAGE FROM THE LOWER COLORADO WATER SUPPLY PROJECT WELLFIELD  
CALENDAR YEAR 2007

12/22/08		(ACRE-FEET)													
		Ftnts	JAN	FEB	MAR	APR	MAY	JUN	JUL	AUG	SEP	OCT	NOV	DEC	TOTAL
LCWSP WELLFIELD PUMPAGE	1/	Total	0	0	85	517	533	738	700	670	644	731	667	704	5,989
LCWSP NON-FEDERAL CONTRACTORS	2/														
City of Needles (on its own behalf)		Diversions	42	39	48	49	109	69	74	60	61	60	48	37	696
		CU	23	23	30	33	71	47	49	41	40	39	30	18	444
Havasu Water Company of California		Diversions	2	3	3	3	4	5	5	5	4	3	3	2	42
		CU	1	2	2	2	2	3	3	3	2	2	2	1	25
Vista del Lago Resort (previously J. Victor Constuction)		Diversions	0	0	0	1	1	1	1	2	2	2	1	1	12
		CU	0	0	0	0	1	1	1	1	1	1	1	0	7
Pacific Gas & Electric Company		Diversions	13	17	23	25	30	37	40	39	30	25	18	18	315
		CU	5	7	9	10	11	14	15	15	10	9	7	7	119
Southern California Gas Company		Diversions	3	3	5	5	6	8	8	8	6	5	4	4	65
		CU	3	3	5	5	6	8	8	8	6	5	4	4	65
Needles Other Subcontractors		Diversions	7	8	12	12	15	18	20	19	15	13	10	9	158
		CU	4	5	7	7	9	11	12	12	9	8	6	5	95
TOTAL NON-FEDERAL USE		2/	36	40	53	57	100	84	88	80	68	64	50	35	755
BALANCE FROM PREVIOUS YEARS - CONSUMED		3/													178
PUMPAGE FOR NON-FEDERAL CONTRACTORS		4/													577
LCWSP FEDERAL CONTRACTORS															
BLM		Diversions	28	28	33	49	39	54	45	58	45	34	34	33	480
		Returns	6	6	7	13	10	13	12	14	11	8	9	9	118
		CU	22	22	26	36	29	41	33	44	34	26	25	24	362
TOTAL BLM USE		5/													122
BALANCE FROM PREVIOUS YEARS - CONSUMED		3/													122
WELLFIELD PUMPAGE FOR BLM		4/													240
USBR - Parker Dam and Government Camp		Diversions	16	12	15	18	20	19	18	23	19	20	11	6	197
		Returns	2	2	2	2	10	10	10	10	10	2	1	2	63
		CU	14	10	13	16	10	9	8	13	9	18	10	4	134
TOTAL RECLAMATION USE		6/													-27
BALANCE FROM PREVIOUS YEARS - MADE UP		3/													-27
WELLFIELD PUMPAGE FOR RECLAMATION		4/													161
LCWSP WATER AVAILABLE TO MWD	7/														5,011

**Footnotes:**

1/ Non-Colorado River water pumped from the LCWSP wellfield and delivered into the AAC for use by IID.

IID forebears the diversion of this amount from the Colorado River to make water available for exchange by the LCWSP beneficiaries.

2/ LCWSP non-Federal contractor (City of Needles) and subcontractors - Colorado River water use exchanged with LCWSP accrued balance and wellfield pumpage.

3/ LCWSP balance accrued by each of the project beneficiaries and consumed in 2007. Prior to 2007, pumpage from the wellfield was determined by the amount of water ordered by Project beneficiaries.

From the start of the project IID has pumped more water from the wellfield (per orders by beneficiaries) than has been consumed from the Colorado River by Project beneficiaries.

The difference between the amount pumped and the amount consumed created a balance of unused Project water. Remaining balances were consumed by the Non-Federal Project beneficiaries in 2007.

The BLM was not able to consume all of their balance in 2007 and will carry some balance into 2008 and 2009. Reclamation had to make up water in 2007 due to a negative balance.

4/ The amount of LCWSP wellfield pumping exchanged for Colorado River water by the Project beneficiary in 2007.

5/ Portion of the LCWSP allocated to the BLM - Colorado River water use exchanged with LCWSP accrued balance and wellfield pumpage.

6/ Portion of the LCWSP allocated to the Bureau of Reclamation - Colorado River water use exchanged with LCWSP accrued balance and wellfield pumpage.

7/ This is the total amount of water pumped from the wellfield minus wellfield pumpage for each of the other Project beneficiaries.

## **CONSERVATION, TRANSFER, AND EXCHANGE AGREEMENTS BY STATE**

Colorado River water apportioned to the Lower Division states has been further apportioned among the states of Arizona, California, and Nevada and is generally committed to specific persons or entities on a permanent basis. Increasing water demands within the Lower Division states must be met through a combination of conservation, transfers, exchanges, or new water sources which augment the limited supply of Colorado River water.

The Lower Colorado Water Supply Project (LCWSP) implements a 1986 statute which authorizes the exchange of non-Colorado River water for Colorado River water within the State of California. Water accounting information relating to the LCWSP appears in the previous section of this report.

On October 10, 2003, the Secretary of the Interior entered into the Colorado River Water Delivery Agreement (CRWDA) with Imperial Irrigation District, Coachella Valley Water District, The Metropolitan Water District of Southern California, and the San Diego County Water Authority to resolve longstanding disputes regarding the priority, use, and transfer of Colorado River water within California. The CRWDA recognizes a variety of water transfers, exchanges, and conservation programs which alter the delivery of certain Colorado River water for up to 75 years.

The California agencies entered into a series of supplemental agreements, including the Quantification Settlement Agreement, that collectively implement many provisions of the CRWDA through water transfers, water exchanges, and water conservation measures. Data relating to these California events is depicted here. There were no transfers or exchanges of Colorado River water reported within Arizona or Nevada during calendar year 2007.

### **Description of Included Tables**

The table titled “Comparison of Net California Agricultural Use to the 2007 ISG Annual Target” demonstrates the impact of conservation and transfers on agricultural water use in California in 2007. The table titled “Transfers, Exchanges and Water Made Available by Extraordinary Conservation” tabulates agreements in California existing outside of the CRWDA or in amounts that differ from the amounts tabulated in Exhibit B of the CRWDA. The table titled Exhibit B is reproduced from the CRWDA for convenient reference.

COMPARISON OF NET CALIFORNIA AGRICULTURAL USE TO THE 2007 ISG TARGET <sup>1</sup>  
CALENDAR YEAR 2007

12/22/08

Uses by California Agricultural Entities	Ftns	Consumptive Uses Acre-Feet	Comments
Palo Verde Irrigation District		375,347	
Yuma Project Reservation Division		46,580	
Yuma Island Pumpers	2/	6,136	Yuma Island pumpers diversion was 11,096 af times 0.553 CU factor is 6,136 af of CU.
Priorities 1, 2, 3b		428,063	
CVWD		311,971	
IID		2,872,754	
Total California Agricultural Use		3,612,788	
MWD Adjustments for Priority 1, 2, and 3b use		(8,063)	MWD's reductions for priorities 1, 2, and 3b count toward meeting the ISG annual target.
IID CRWDA Exhibit C Payback	3/	34,831	
IID IOPP Payback		1,263	
CVWD CRWDA Exhibit C Payback	3/	7,404	
MWD-CVWD Exchange		0	
IID ICS		0	
IID and CVWD reductions for PPRs		14,500	IID = 11,500 af, CVWD = 3,000 af.
<u>Use by California Agriculture+MWD Adjustment+ Agricultural paybacks+IID/CVWD covered PPRs</u>		<u>3,662,723</u>	
<b>ISG Target Comparison</b>			
2007 Agricultural Target		3,603,000	See Column 23 of Exhibit B of the CRWDA
<u>Use by California Agriculture+MWD Adjustment+ Agricultural paybacks+IID/CVWD covered PPRs</u>		<u>3,662,723</u>	
<b>Total Target Overrun</b>		<b>59,723</b>	
<b>Priority 1, 2, and 3b Use Below or (Above) 420,000 af</b>			
Palo Verde Irrigation District		375,347	
Yuma Project Reservation Division		46,580	
Yuma Island Pumpers	2/	6,136	
Total Priority 1, 2, 3b Use		428,063	
MWD reduction for Priority 1, 2, and 3b water use		8,063	Per Section 4.d of the CRWDA, MWD use is reduced by Priority 1, 2, and 3b use greater than 420,000 af.
Priority 1, 2, and 3b water delivered to MWD		0	Per Section 4.d of the CRWDA, Priority 1, 2, and 3b use less than 420,000 af is delivered to MWD.

Footnotes:

1/ Part XI, Section 5, Record of Decision of the Colorado River Interim Surplus Guidelines FEIS contain the adopted Interim Surplus Guidelines (ISG). Section 5 of the ISG contains benchmarks for aggregate California agricultural water use during each third year. Exhibit B (attached) to the CRWDA, column 22 references these ISG Benchmarks, and column 23 references annual targets for aggregate agricultural water use for the years between the ISG Benchmarks.

Footnotes 2 and 12 of Exhibit B define annual targets and benchmark year aggregate agricultural use totals as all consumptive use of Priorities 1 through 3 plus 14,500 of PPR use, minus MWD adjustments for Priority 1 through 3 use above 420,000 af.

2/ Incorporation of Yuma Island Pumpers' use within Priority 2 does not represent either a final approval of this use by Reclamation or a final determination of the appropriate Decree accounting for this use; and is not an admission by any Colorado River contractor as to the legality of this use or diversion of Colorado River water.

3/ Repayment of overrun amounts does not count as compliance with transfers set forth in Ex. B of the CRWDA, per section 8.a of the CRWDA.

TRANSFERS, EXCHANGES AND WATER MADE AVAILABLE BY EXTRAORDINARY CONSERVATION  
 CALENDAR YEAR 2007  
 STATE OF ARIZONA

12/22/08

(ACRE-FEET)

TRANSFER PROGRAM OR PARTICIPATING AGENCIES	Ftnts	JAN	FEB	MAR	APR	MAY	JUN	JUL	AUG	SEP	OCT	NOV	DEC	TOTAL
--	-------	-----	-----	-----	-----	-----	-----	-----	-----	-----	-----	-----	-----	-------

No transfers were reported to Reclamation during this calendar year

Footnotes:

No footnotes for this calendar year.

TRANSFERS, EXCHANGES AND WATER MADE AVAILABLE BY EXTRAORDINARY CONSERVATION  
CALENDAR YEAR 2007  
STATE OF CALIFORNIA

TRANSFER PROGRAM OR PARTICIPATING AGENCIES	12/22/08	(ACRE-FEET)												
	Ftnts	JAN	FEB	MAR	APR	MAY	JUN	JUL	AUG	SEP	OCT	NOV	DEC	TOTAL
WATER CONSERVATION PROGRAM IID/MWD CONSERVED WATER	1/													105,000
MWD REDUCTION FOR CVWD USE - IID CONSERVATION	2/	1,667	1,666	1,667	1,666	1,667	1,666	1,667	1,667	1,666	1,667	1,667	1,667	20,000
IID CONSERVATION FOR TRANSFER TO SDCWA	3/	2,620	6,004	8,693	13,504	16,266	2,913							50,000
IID CONSERVATION FOR TRANSFER TO SDCWA - MITIGATION	4/						10,515	13,629	877					25,021
MWD/PVID FORBEARANCE AND FALLOWING PROGRAM	5/													65,310
COACHELLA CANAL LINING PROJECT - TOTAL CONSERVATION	6/	2,321	2,320	2,321	2,320	2,321	2,321	2,321	2,321	2,321	2,321	2,321	2,321	27,850
COACHELLA CANAL LINING PROJECT - SDCWA	6/	1,792	1,791	1,792	1,791	1,792	1,791	1,792	1,792	1,792	1,792	1,791	3,417	23,125
COACHELLA CANAL LINING PROJECT - SUPPLEMENTAL WATER - MW	6/	375	375	375	375	375	375	375	375	375	375	375	375	4,500
COACHELLA CANAL LINING PROJECT - MITIGATION	6/	19	19	18	19	19	18	19	19	19	18	19	19	225

Notes: The remaining Exhibit B transfers, exchanges and conservation can be determined from Exhibit B, shown on page 46 of this report.  
Reclamation recognizes the CRWDA allows each party to make water available or to divert water made available on their own schedule.

Footnotes:

- 1/ 1988 IID/MWD Water Conservation Program conserved water, determined in accordance with the amended 1988 Program Agreement and the amended 1989 Approval Agreement, made available by IID for diversion in current year by MWD, reported as an annual total.
- 2/ MWD reduction for up to 20,000 af of water conserved by IID under the 1988 IID/MWD Water Conservation Program for use by CVWD.  
This reduction occurs at CVWD'S request in accordance with the 1989 Approval Agreement as amended.
- 3/ The CRWDA specifies required conservation by IID for transfer to SDCWA. This amount is found in Column 5 of Exhibit B of the CRWDA.
- 4/ The water exchanged with SDCWA and delivered to the Salton Sea for mitigation purposes, made available through conservation actions within IID and the restoration of Re-regulatory water to the system.  
In addition, in 2007 IID delivered of 641 af of water that had not been diverted and delivered in 2004. Total deliveries in 2007 resulted in over delivery to the Sea in the amount of 21 af.
- 5/ Annual PVID reduction in consumptive use through land fallowing as reported in Table 8 of the report produced jointly by Reclamation, PVID, and MWD entitled, "Calendar Year 2007 Fallowed Land Verification Report: PVID/MWD Forbearance and Fallowing Program" less the 7,000 acre-feet provided to Reclamation for System Conservation.  
The value represents the estimated reduction in PVID consumptive use resulting from the fallowing of 14,734 acres of land for the months of January and February, 14,752 acres for the months of March through July, and 14,607 acres for the months of August through December, 2007.
- 6/ Water conserved through the construction of a new concrete lined canal parallel to a portion of the unlined Coachella Canal. The Secretarial Determination of water conserved by the project was issued in January 2008 (found in Significant Documents). Conserved water was distributed in accordance with the Allocation Agreement among the United States, MWD, CVWD IID, SDCWA, and the SLRSP, dated October 10, 2003 and Exhibit B to the Settlement Agreement between CVWD and SDCWA, dated October 30, 2007.

TRANSFERS, EXCHANGES AND WATER MADE AVAILABLE BY EXTRAORDINARY CONSERVATION  
 CALENDAR YEAR 2007  
 STATE OF NEVADA

12/22/08

(ACRE-FEET)

TRANSFER PROGRAM OR PARTICIPATING AGENCIES	Flnts	JAN	FEB	MAR	APR	MAY	JUN	JUL	AUG	SEP	OCT	NOV	DEC	TOTAL
--	-------	-----	-----	-----	-----	-----	-----	-----	-----	-----	-----	-----	-----	-------

No transfers were reported to Reclamation during this calendar year

Footnotes:

No footnotes for this calendar year.



WATER MADE AVAILABLE BY EXTRAORDINARY CONSERVATION  
 CALENDAR YEAR 2007  
 BUREAU OF RECLAMATION

	12/22/08	(ACRE-FEET)												
	Fints	JAN	FEB	MAR	APR	MAY	JUN	JUL	AUG	SEP	OCT	NOV	DEC	TOTAL
MWD/USBR AGREEMENT FOR SYSTEM CONSERVATION	1	1,000	1,000	1,000	1,000	1,000	1,000	1,000	0	0	0	0	0	7,000
CONSERVATION THROUGH DESALINATION	2	0	257	1,263	1,436	1,651	0	0	0	0	0	0	0	4,606

Footnotes:

- 1/ Reclamation entered into a system conservation agreement with MWD to conserve water within PVID.  
 In 2007, 7,000 acre-feet of water created by the PVID/MWD Forbearance and Following Program remained in Lake Mead.
- 2/ Reclamation operated the Yuma Desalting Plant from February until May, 2007. During that period bypass water was pumped from the MODE and desalinated.  
 The desalinated water was returned directly to the Colorado River upstream of Morelos Dam and made available to satisfy Mexico's Treaty delivery obligations.  
 This action allowed an equal amount of water to remain in storage in Lake Mead.

**EXHIBIT B**  
**QUANTIFICATION AND TRANSFERS<sup>1</sup>**

*In Thousands of Acre-feet*

Column:	1	2	3	4	5	6	7	8	9	10	11	12	13	14	15	16	17	18	19	20	21	22	23	
	Calendar Year	Priority 1, 2 and 3b	IID Priority 3a										CVWD Priority 3a						Total Priority 1-3 Use Plus PPR Consumptive Use (sum of columns 2+13+20 plus 11+16)	<sup>12</sup> ISG Benchmarks	<sup>12</sup> Annual Targets			
			Reductions										Reductions			Additions			CVWD Net Consumptive Use Amount (columns 14-17 plus columns 18 + 19)					
			<sup>10</sup> IID Priority 3a Quantified Amount	<sup>3</sup> IID Reduction: MWD 1988 Agreement Transfer	<sup>11</sup> IID Reduction: SDCWA Transfer	<sup>4</sup> IID Reduction: AAC Lining IID, SDCWA & SLR	<sup>5,6</sup> IID Reduction: SDCWA Mitigation Transfer	<sup>7</sup> Intra-Priority 3 Transfer IID/CVWD	<sup>8</sup> IID Reduction: MWD Transfer with Salton Sea Restoration	<sup>9</sup> IID Reduction: ISG Backfill	<sup>9</sup> IID Reduction: Misc. PPRs	<sup>10</sup> IID Reductions: Total Amount (sum of columns 4 through 11)	<sup>10</sup> IID Net Consumptive Use Amount (difference between column 3 and column 12)	CVWD Priority 3a Quantified Amount	<sup>4</sup> CVWD Reduction: CC Lining, SDCWA & SLR	<sup>9</sup> CVWD Reduction: Misc. PPRs	<sup>11</sup> CVWD Reductions: Total Amount (sum of columns 15 + 16)	<sup>7</sup> Intra-Priority 3 Transfer IID/CVWD	<sup>3</sup> Intra-Priority 3 Transfer MWD/CVWD					
1	2003	420	3,100	110	10	0	5	0	0	0	11.5	136.5	2,963.5	330	0	3	3	0	20	347	3,745.0	3,740	3,740	
2	2004	420	3,100	110	20	0	10	0	0	0	11.5	151.5	2,948.5	330	0	3	3	0	20	347	3,730.0		3,707	
3	2005	420	3,100	110	30	0	15	0	0	0	11.5	166.5	2,933.5	330	0	3	3	0	20	347	3,715.0		3,674	
4	2006	420	3,100	110	40	0	20	0	0	9	11.5	190.5	2,909.5	330	26	3	29	0	20	321	3,665.0	3,640	3,640	
5	2007	420	3,100	110	50	0	25	0	0	0	11.5	196.5	2,903.5	330	26	3	29	0	20	321	3,659.0		3,603	
6	2008	420	3,100	110	50	67.7	25	4	20	0	11.5	288.2	2,811.8	330	26	3	29	4	20	325	3,571.3		3,566	
7	2009	420	3,100	110	60	67.7	30	8	40	0	11.5	327.2	2,772.8	330	26	3	29	8	20	329	3,536.3	3,530	3,530	
8	2010	420	3,100	110	70	67.7	35	12	60	0	11.5	366.2	2,733.8	330	26	3	29	12	20	333	3,501.3		3,510	
9	2011	420	3,100	110	80	67.7	40	16	80	0	11.5	405.2	2,694.8	330	26	3	29	16	20	337	3,466.3		3,490	
10	2012	420	3,100	110	90	67.7	45	21	100	0	11.5	445.2	2,654.8	330	26	3	29	21	20	342	3,431.3	3,470	3,470	
11	2013	420	3,100	110	100	67.7	70	26	100	0	11.5	485.2	2,614.8	330	26	3	29	26	20	347	3,396.3		3,462	
12	2014	420	3,100	110	100	67.7	90	31	100	0	11.5	510.2	2,589.8	330	26	3	29	31	20	352	3,376.3		3,455	
13	2015	420	3,100	110	100	67.7	110	36	100	0	11.5	535.2	2,564.8	330	26	3	29	36	20	357	3,356.3		3,448	
14	2016	420	3,100	110	100	67.7	130	41	100	0	11.5	560.2	2,539.8	330	26	3	29	41	20	362	3,336.3		3,440	
15	2017	420	3,100	110	100	67.7	150	45	91	0	11.5	575.2	2,524.8	330	26	3	29	45	20	366	3,325.3			
16	2018	420	3,100	110	130	67.7	0	63	0	0	11.5	382.2	2,717.8	330	26	3	29	63	20	384	3,536.3			
17	2019	420	3,100	110	160	67.7	0	68	0	0	11.5	417.2	2,682.8	330	26	3	29	68	20	389	3,506.3			
18	2020	420	3,100	110	193	67.7	0	73	0	0	11.5	454.7	2,645.3	330	26	3	29	73	20	394	3,473.8			
19	2021	420	3,100	110	205	67.7	0	78	0	0	11.5	472.2	2,627.8	330	26	3	29	78	20	399	3,461.3			
20	2022	420	3,100	110	203	67.7	0	83	0	0	11.5	474.7	2,625.3	330	26	3	29	83	20	404	3,463.8			
21	2023	420	3,100	110	200	67.7	0	88	0	0	11.5	477.2	2,622.8	330	26	3	29	88	20	409	3,466.3			
22	2024	420	3,100	110	200	67.7	0	93	0	0	11.5	482.2	2,617.8	330	26	3	29	93	20	414	3,466.3			
23	2025	420	3,100	110	200	67.7	0	98	0	0	11.5	487.2	2,612.8	330	26	3	29	98	20	419	3,466.3			
24	2026	420	3,100	110	200	67.7	0	103	0	0	11.5	492.2	2,607.8	330	26	3	29	103	20	424	3,466.3			
25	2027	420	3,100	110	200	67.7	0	103	0	0	11.5	492.2	2,607.8	330	26	3	29	103	20	424	3,466.3			
26	2028	420	3,100	110	200	67.7	0	103	0	0	11.5	492.2	2,607.8	330	26	3	29	103	20	424	3,466.3			
	2029-2037 <sup>14</sup>	420	3,100	110	200	67.7	0	103	0	0	11.5	492.2	2,607.8	330	26	3	29	103	20	424	3,466.3			
	2038-2047 <sup>14</sup>	420	3,100	110	200	67.7	0	103	0	0	11.5	492.2	2,607.8	330	26	3	29	103	20	424	3,466.3			
	2048-2077 <sup>14</sup>	420	3,100	110	200	67.7	0	100	0	0	11.5	489.2	2,610.8	330	26	3	29	100	20	421	3,466.3			

- Exhibit B is independent of increases and reductions as allowed under the Inadvertent Overrun and Payback Policy.
- Any higher use covered by MWD, any lesser use will produce water for MWD and help satisfy ISG Benchmarks and Annual Targets.
- IID/MWD 1988 Conservation Program conserves up to 110,000 AFY and the amount is based upon periodic verification. Of amount conserved, up to 20,000 AFY to CVWD (column 19), which does not count toward ISG Benchmarks and Annual Targets, and remainder to MWD.
- Ramp-up amounts may vary based upon construction progress, and final amounts will be determined by the Secretary pursuant to the Allocation Agreement.
- Any amount identified in Exhibit B for mitigation purposes will only be from non-Colorado River sources and these amounts may be provided by exchange for Colorado River water.
- Water would be transferred to MWD subject to satisfaction of certain conditions and to appropriate federal approvals. For informational purposes only, these transfers may also be subject to state approvals. Schedules are subject to adjustments with mutual consent.
- MWD can acquire if CVWD declines the water. Any water obtained by MWD will be counted as additional agricultural reduction to help satisfy the ISG Benchmarks and Annual Targets. MWD will provide CVWD 50,000 AFY of the 100,000 AFY starting in year 46.
- IID has agreed to provide transfer amounts to meet the minimum ISG benchmarks, not to exceed a cumulative total of 145,000 AF. Maximum transfer amounts are 25,000 AF in 2006, 50,000 AF plus the unused amount from 2006 in 2009, and 70,000 AF plus the unused amounts up to the amount shown, as agreed upon reduction to IID or CVWD to cover collectively the sum of individual Miscellaneous PPRs, federal reserved rights and decreed rights. This is a reduction that counts towards ISG Benchmarks and Annual Targets.
- For purposes of Subparagraph 8(b)(2)(i) and (ii) and 8(c)(1) and (4) the Secretary will take into account: (i) the satisfaction of necessary conditions to certain transfers (columns 7 and 9) not within IID's control; (ii) the amounts of conserved water as determined, where such amounts may vary (columns 4, 6, 9 and 10); and (iii) with respect to column 7, reductions by IID will be considered in determining IID's compliance regardless of whether the conserved water is diverted into the Colorado River Aqueduct.
- For purposes of Subparagraph 8(c)(1) and (4) the Secretary will take into account: (i) the satisfaction of necessary conditions to certain transfers (columns 15 and 16) not within CVWD's control; and (ii) the amounts of conserved water as determined, where such amounts may vary (column 15).
- All-consumptive use of priorities 1 through 3 plus 14,500 AF of PPRs must be within 25,000 AF of the amount stated.
- Assumes SDCWA does not elect termination in year 35.
- Assumes SDCWA and IID mutually consent to renewal term of 30 years.

Notes:

Substitute transfers can be made provided the total volume of water to be transferred remains equal or greater than amounts shown consistent with applicable federal approvals.

## **WATER SUBJECT TO TEMPORARY RE-REGULATION CAPTURED AT THE REQUEST OF THE BUREAU OF RECLAMATION**

Water from Colorado River system storage spilled or released for flood control purposes, or released to fill a water order but not then diverted by an entitlement holder, may flow to the NIB in excess of Treaty obligations with Mexico. Historically, this water has been subject to temporary re-regulation by Reclamation, for example, when it has been captured and held in Senator Wash Reservoir. Beginning in 1992, operation of Senator Wash Reservoir has been restricted due to dam safety concerns.

During certain times in 2004 and 2005, in response to heavy rainfall occurring in a watershed that is tributary to the lower Colorado River, Reclamation released water from Lake Havasu to protect the integrity of Parker Dam. Also, as a result of these rainstorms, Colorado River water ordered by entitlement holders and released from Hoover Dam was not diverted. In an effort to prevent a portion of these releases from being lost to beneficial use within the United States as excess flows to the NIB, and in light of the current storage capacity limitation at Senator Wash Reservoir, Reclamation sought to effect the temporary re-regulation of this water. This water could not otherwise have been stored by Reclamation works or taken by a water user under a Colorado River entitlement.

In 2004 and 2005, a portion of this water was captured and stored by water users at the specific request of Reclamation to permit the beneficial use of that water within the United States.

This temporarily re-regulated water, under the terms of the agreements entered into between Reclamation and the water users, was restored to Colorado River system storage in 2005, 2006 and 2007. All temporarily re-regulated water has been restored to system storage.

These water users' efforts in assisting Reclamation in the temporary re-regulation of water served to prevent that water from being lost to beneficial use in the United States. Reclamation recognized the water users' efforts as a form of extraordinary conservation and credited the water users with an amount equal to 25% of the quantity captured and stored at Reclamation's specific request. The water users were permitted to use these credits to satisfy specified payback obligations.

### **Description of Table**

The tabulation titled "Water Subject to Temporary Re-Regulation" displays the amount of water captured for temporary re-regulation by a water user under a written agreement with Reclamation. It includes the amount of water restored to system storage, the amount of extraordinary conservation credits available to the water user, and the amount of credits used by the water user to meet specified payback obligations.

WATER SUBJECT TO TEMPORARY RE-REGULATION <sup>1</sup>  
CALENDAR YEAR 2007

		12/22/2008													(ACRE-FEET)	
		Ftnts	BOY	JAN	FEB	MAR	APR	MAY	JUN	JUL	AUG	SEP	OCT	NOV	DEC	TOTALS
<b>CALIFORNIA</b>																
<b>IMPERIAL IRRIGATION DISTRICT <sup>2</sup></b>																
	CAPTURED FOR RE-REGULATION	3		0	0	0	0	0	0	0	0	0	0	0	0	0
	NET RE-REGULATORY CAPTURE	4		0	0	0	0	0	0	0	0	0	0	0	0	0
	BALANCE - PREVIOUS YEARS	5														2,356
	RESTORED TO SYSTEM STORAGE	6		0	0	0	0	0	2,356	0	0	0	0	0	0	2,356
	CAPTURE BALANCE	7	2,356	2,356	2,356	2,356	2,356	2,356	0	0	0	0	0	0	0	0
	ACCRUED CREDIT	8		0	0	0	0	0	0	0	0	0	0	0	0	0
	APPLIED TO PAYBACK OBLIGATION	9		0	0	0	0	0	0	0	0	0	0	0	0	0
	ACCRUED CREDIT BALANCE	10		0	0	0	0	0	0	0	0	0	0	0	0	0
<b>METROPOLITAN WATER DISTRICT <sup>2</sup></b>																
	CAPTURED FOR RE-REGULATION	3		0	0	0	0	0	0	0	0	0	0	0	0	0
	NET RE-REGULATORY CAPTURE	4		0	0	0	0	0	0	0	0	0	0	0	0	0
	BALANCE - PREVIOUS YEARS	5	0	0	0	0	0	0	0	0	0	0	0	0	0	0
	RESTORED TO SYSTEM STORAGE	11		0	0	0	0	0	0	0	0	0	0	0	0	0
	CAPTURE BALANCE	7		0	0	0	0	0	0	0	0	0	0	0	0	0
	ACCRUED CREDIT	8	0	0	0	0	0	0	0	0	0	0	0	0	0	0
	APPLIED TO PAYBACK OBLIGATION	9		0	0	0	0	0	0	0	0	0	0	0	0	0
	ACCRUED CREDIT BALANCE	10		0	0	0	0	0	0	0	0	0	0	0	0	0
<b>CALIFORNIA TOTALS</b>																
	CAPTURED FOR RE-REGULATION	3		0	0	0	0	0	0	0	0	0	0	0	0	0
	NET RE-REGULATORY CAPTURE	4		0	0	0	0	0	0	0	0	0	0	0	0	0
	BALANCE - PREVIOUS YEARS	5														2,356
	RESTORED TO SYSTEM STORAGE	6/11/		0	0	0	0	0	2,356	0	0	0	0	0	0	2,356
	CAPTURE BALANCE	7	2,356	2,356	2,356	2,356	2,356	2,356	0	0	0	0	0	0	0	0
	ACCRUED CREDIT	8	0	0	0	0	0	0	0	0	0	0	0	0	0	0
	APPLIED TO PAYBACK OBLIGATION	9		0	0	0	0	0	0	0	0	0	0	0	0	0
	ACCRUED CREDIT BALANCE	10		0	0	0	0	0	0	0	0	0	0	0	0	0

**Footnotes:**

- 1/ The temporary re-regulation of river water, otherwise flowing to Mexico in excess of treaty requirements, may be effected at the request of Reclamation through the capture and temporary storage of this water.
- 2/ IID and MWD have entered into agreements for Temporary Re-regulation of Colorado River water. Under these agreements each re-regulating entity will effect temporary storage of Colorado River water released from system storage that would otherwise flow to Mexico in excess of Treaty obligations. Each entity will, in accordance with their respective agreements, return 100% of the water stored under this agreement back to the system during the year following publication of the Colorado River Accounting and Water Use Report which reflects Water Subject to Temporary Re-regulation stored in 2004 or 2005. The re-regulatory water captured and temporarily stored will not be accounted against the entity's entitlement or the State of California's apportionment during the year of capture, it will be accounted as a diversion and use during the year when it is restored to system storage.
- 3/ Total amount of water captured from the river during the calendar year to effect temporary re-regulation.
- 4/ The net amount of water captured from the river to effect temporary re-regulation of water.
- 5/ Balance of accumulated re-regulatory water in storage from previous years.
- 6/ The amount of re-regulatory water restored to system storage during the calendar year. This amount of water was conserved by IID and IID reduced its net diversions in accordance with the CRWDA, Exhibit B, column 7.
- 7/ Monthly cumulative net capture less re-regulatory water restored to system storage during the calendar year.
- 8/ IID and MWD engaged in extraordinary conservation by assisting Reclamation in the temporary re-regulation of Colorado River water that would otherwise be lost to beneficial use in the United States. Reclamation credited IID and MWD an amount equal to 25% of the re-regulated water captured. Each entity may apply these extraordinary conservation credits towards payback of CRWDA, Exhibit C obligations. This tabulation displays the monthly cumulative amount of extraordinary conservation credits accrued by the re-regulating entity.
- 9/ The amount of accrued extraordinary conservation credits applied toward the repayment of CRWDA, Exhibit C obligations during the calendar year.
- 10/ The monthly cumulative amount of accrued extraordinary conservation credits remaining at the end of the calendar year. Calculated as the BOY accrued credit balance less any extraordinary conservation credit used for payback during the calendar year.
- 11/ The amount of re-regulatory water temporarily stored in MWD's system and restored to system storage during the calendar year.

## DEMONSTRATION PROGRAM FOR THE CREATION OF INTENTIONALLY CREATED SURPLUS WATER

In 2006, Reclamation entered into letter agreements with the Imperial Irrigation District and The Metropolitan Water District of Southern California to implement a demonstration program (Program) for the development of Intentionally Created Surplus Water (ICS). The Program covers the creation of ICS Water during calendar years 2006 and 2007. “ICS Water” in this Program refers to a quantity of surplus water that the Secretary may make available for release under Article II(B)(2) of the Consolidated Decree of the Supreme Court of the United States in *Arizona V. California*, 547 U.S. 150 (2006) (Consolidated Decree) as Intentionally Created Surplus. The Program requires the creation of ICS water through extraordinary conservation.

The following conditions apply to ICS Water:

- 5 percent of the ICS water created will be dedicated to system storage to provide a collective storage benefit for Colorado River users
- An annual evaporation loss of 2.8 percent will be applied to the remaining ICS water beginning the year after its creation; under flood control releases ICS water will be the first released and
- If the conserving entity incurs an overrun during a year when ICS water is to be created, the ICS creation will be reduced by the amount of the overrun, up to the amount of ICS proposed.

Copies of the agreements can be found in the Significant Documents section of the report.

Beginning in 2008, the creation and use of ICS water will be governed by the Record of Decision for the Colorado River Interim Guidelines for Lower Basin Shortage and the Coordinated Operations for Lake Powell and Lake Mead.

DEMONSTRATION PROGRAM FOR THE CREATION OF INTENTIONALLY CREATED SURPLUS (ICS) WATER <sup>1</sup>  
 CALENDAR YEAR 2007

12/22/08

(ACRE-FEET)

PARTICIPATING ENTITY	ICS AGREEMENT REPORTING	FTNTS	AMOUNTS
IMPERIAL IRRIGATION DISTRICT	ICS Water Created	2	0
	Reduction Due to Overrun	3	0
	Amount Assessed for Benefit of Colorado River System (5%)	4	0
	Amount Assessed for Evaporation (2.8%)	5	0
	Amount of ICS Released for Flood Control Purposes	6	0
	End of Year ICS Account Balance	7	0
	THE METROPOLITAN WATER DISTRICT OF SOUTHERN CALIFORNIA	BOY Extraordinary Conservation ICS Balance	
ICS Water Created		2	2,382
Reduction Due to Overrun		3	0
Amount Assessed for Benefit of Colorado River System (5%)		4	119
Amount Assessed for Evaporation (2.8%)		5	1,127
Amount of ICS Released for Flood Control Purposes		6	0
End of Year ICS Account Balance		7	41,398

**Footnotes:**

- 1/ In 2006, Reclamation entered into separate agreements with MWD and IID to implement a demonstration program to create Extraordinary Conservation Intentionally Created Surplus (ICS) during 2006 and 2007. The agreements define the terms that allow MWD and/or IID to store conserved water in Lake Mead and are available for review in the Significant Documents portion of this report.
- 2/ The amount of Extraordinary Conservation ICS Water created by the party to the agreement.
- 3/ In accordance with Section 3.C.7 of the Interim Guidelines for the Operation of Lake Powell and Lake Mead, if a contractor has an overrun payback obligation, the contractor must pay the overrun payback obligation in full before requesting or receiving delivery of ICS. The contractor's ICS account shall be reduced by the amount of the overrun payback obligation in order to pay the overrun payback obligation.
- 4/ During the year of creation, five percent of the ICS Water created will be deducted to result in additional system water in storage in Lake Mead. This assessment does not apply in certain circumstances as specified in the Interim Guidelines for the Operation of Lake Powell and Lake Mead.
- 5/ Under the Demonstration Program, the balance of the ICS water shall be subject to an evaporation loss of 2.8 percent in the year following the creation of ICS water. This loss is applied annually to the end-of-year balance of the ICS.
- 6/ If Reclamation releases water for flood control purposes, ICS water will be the first to be released.
- 7/ The EOY balance of ICS water after the appropriate reductions have been applied.

## **DOCUMENTS AND LETTERS SIGNIFICANT TO THE DELIVERY OF AND ACCOUNTING FOR THE USE OF COLORADO RIVER WATER IN CY 2007**

These documents are provided to give the reader an opportunity to read the agreements, letters, regulations and operating plans that impacted Reclamation's delivery of Colorado River water during 2007.

The compact disc (CD) located in the pocket on the back cover of this report contains the documents significant to the delivery of Colorado River water in 2007. These electronically filed documents are in searchable Acrobat<sup>®</sup> (PDF) format. The list below provides a brief description of each significant document's contents and the file name under which that document may be found on the CD. The file names are printed exactly as they appear on the CD. The acronyms used below are defined in the Acronyms and Abbreviated Terms on page one of this report. Anyone desiring additional water accounting information is encouraged to log on to the following website, where all previous water accounting reports can be viewed and the complete PDF file may be downloaded: [www.usbr.gov/lc/region/g4000/wtracct.html](http://www.usbr.gov/lc/region/g4000/wtracct.html).

### **DECISIONS:**

#### Record of Decision

- Colorado River Interim Guidelines for Lower Basin Shortages and the Coordinated Operations for Lake Powell and Lake Mead
- CD file name: 2007 ROD Interim Guidelines-Shortages-Coordinated Operations

### **REPORTS:**

#### 2007 Annual Operating Plan (AOP) Executive Summary

- Outlines the criteria under which the Colorado River will be operated during CY 2007 given current and anticipated conditions
- CD file name: 2007 AOP Executive Summary

### **AGREEMENTS:**

#### Demonstration Program to Create Intentionally Created Surplus Water

An agreement between MWD and Reclamation to create 50,000 acre-feet of Intentionally Created Surplus Water in 2007 through extraordinary conservation in PVID under its Forbearance and Fallowing Program Agreement with PVID and other measures.

- CD file name: MWD ICS Agreement

## **DOCUMENTS AND LETTERS SIGNIFICANT TO THE DELIVERY OF AND ACCOUNTING FOR THE USE OF COLORADO RIVER WATER IN CY 2007 (cont.)**

### Demonstration Program to Create Intentionally Created Surplus Water

An agreement between IID and Reclamation to create up to 5,000 acre-feet of Intentionally Created Surplus Water in 2007 through extraordinary conservation within IID.

- CD file name: IID ICS Agreement

### Agreement to Implement a Demonstration Program for System Conservation of Colorado River Water

An agreement between Reclamation and MWD to conserve an additional 10,000 acre-feet of Colorado River water in 2006 and 2007 through voluntary supplemental fallowing above that already called for by MWD under its Forbearance and Fallowing Program Agreement with PVID.

- CD file name: 2007 BR-MWD System Conservation Agreement

### The Colorado River Water Delivery Agreement: Federal Quantification Settlement Agreement

The water delivery agreement among the United States, IID, CVWD, MWD and SDCWA. This agreement quantifies the consumptive use allowances for the aforementioned water users. The agreement also addresses terms and conditions of water deliveries.

- CD file name: CRWDA 2003-10-20

### The Inadvertent Overrun and Payback Policy

Terms and conditions for repaying inadvertent overruns of Colorado River water.

- CD file name: Inadvertent Overrun and Payback Policy

### MWD – PVID Forbearance and Fallowing Program Agreement

Agreement between MWD and PVID that provides for the fallowing of irrigated lands within PVID. This agreement was executed August 18, 2004, fallowing began in January 2005.

- CD file name: 2004 MWD-PVID Forbearance and Fallowing Program Agreement



## **DOCUMENTS AND LETTERS SIGNIFICANT TO THE DELIVERY OF AND ACCOUNTING FOR THE USE OF COLORADO RIVER WATER IN CY 2007 (cont.)**

### The Storage and Interstate Release Agreement (SIRA)

This is a water banking agreement between AWBA, SNWA and the CRC of NV. This agreement allows SNWA to acquire long-term water storage credits that are to be held by AWBA. These credits can be exchanged in a later year for Colorado River water made available when users in Arizona develop ICUA.

- CD file name: Storage and Interstate Release Agreement

### Letter Agreement – CAWCD/MWD

1992 Letter Agreement between CAWCD and MWD. This agreement provides for the establishment of an Interstate Underground Storage account to create and implement a demonstration project for the underground storage of Colorado River supplies.

- CD file name: 1992 CAWCD-MWD Agreement for IUS Water

### Letter Agreement – CAWCD/MWD

An amended letter agreement between CAWCD and MWD signed December 11, 2007. This agreement amends the December 2006 recovery agreement among AWBA, CAWCD and MWD concerning the appropriate accounting storage of Colorado River consumptive use.

- CD file name: 2007 CAWCD-MWD Amended ICUA Letter Agreement

### California Extraordinary Conservation ICS Agreement

An agreement for the creation and delivery of Extraordinary Conservation Intentionally Created Surplus water.

- CD file name: California Extraordinary Conservation ICS Agreement

### ICS Delivery Agreement between Reclamation and IID

An agreement between Reclamation and IID that details the verification, delivery, and accounting of Intentionally Created Surplus water generated by IID.

- CD file name: IID ICS Delivery Agreement Between BR-IID

## **DOCUMENTS AND LETTERS SIGNIFICANT TO THE DELIVERY OF AND ACCOUNTING FOR THE USE OF COLORADO RIVER WATER IN CY 2007 (cont.)**

### ICS Delivery Agreement between Reclamation and MWD

An agreement between Reclamation and MWD that details the verification, delivery, and accounting of Intentionally Created Surplus water generated by MWD.

- CD file name: MWD ICS Delivery Agreement Between BR-MWD

### ICS Delivery Agreement among Reclamation , SNWA, and CRCN

An agreement among Reclamation, SNWA, and CRCN that details the verification, delivery, and accounting of Intentionally Created Surplus water generated by SNWA.

- CD file name: SNWA ICS Delivery Agreement Between BR-SNWA-CRCN

### Forbearance Agreement

An agreement among the Arizona Department of Water Resources, PVID, IID, the City of Needles, CVWD, MWD, SNWA, and CRCN to forbear any right to delivery of ICS released for use in another Lower Division state.

- CD file number: Lower Basin States Forbearance Agreement

### Confluence Agreement

An agreement among Reclamation, IID, and SNWA for the advance funding and construction of a confluence structure as an integral component of the Drop 2 storage reservoir project.

- CD file name: Confluence Agreement Between BR-IID-SNWA

### Funding Agreement

An agreement between Reclamation, SNWA, and CRC for the funding and construction of the lower Colorado River Drop 2 storage reservoir project.

- CD file name: Drop 2 Funding Agreement Between BR-SNWA-CRCN

## **DOCUMENTS AND LETTERS SIGNIFICANT TO THE DELIVERY OF AND ACCOUNTING FOR THE USE OF COLORADO RIVER WATER IN CY 2007**

### **LETTERS:**

Letters from CAWCD, PVID, IID, MWD, SNWA granting consent for the development of the Intentionally Created Surplus pilot programs developed by IID and MWD for 2006 and 2007.

- CD file name: 2006-2007 Consent for ICS Program

Letter from Reclamation to IID defining the terms for computation of the All American Canal system loss.

- CD file name: Terms for All American Canal Loss Computation 2007-12

Letter from MWD to CAWCD requesting recovery of Interstate Underground Storage Credits.

- CD file name: 2007 MWD IUSC Recovery Request of CAWCD 2006-09-28

Letter from AWBA to Reclamation regarding the request by MWD for Intentionally Created Unused Apportionment.

- CD file name: 2007 AWBA ICU Apportionment Recovery by MWD 2006-12-28

Letter from IID to Reclamation showing intent to create ICS water for 2007.

- CD file name: 2007 IID ICS 2006-09-15

Letter from Reclamation to CVWD verifying the amount of water conserved through extraordinary measures in 2007 to repay Exhibit C obligations of the CRWDA by CVWD.

- 2007 CVWD Inadvertent Overrun Payback 2008-06-20

Letter from Reclamation to Gila Monster Farms (GMF) verifying the amount of water conserved through extraordinary measures in 2007 to repay inadvertent overruns incurred in 2004 by GMF

- 2007 GMF Inadvertent Overrun Payback 2008-06-20

Letter from Reclamation to IID verifying the amount of water conserved through extraordinary measures in 2007 to repay inadvertent overruns for 2006 and Exhibit C obligations of the CRWDA by IID.

- 2007 IID Inadvertent Overrun Payback 2008-06-20

**DOCUMENTS AND LETTERS SIGNIFICANT TO THE DELIVERY OF AND  
ACCOUNTING FOR THE USE  
OF COLORADO RIVER WATER IN CY 2007**

**MAPS:**

Maps showing the locations of the wells and river pumps reported by the USGS, and presented in the supplemental tabulations.

- CD file name: USGS Pump Maps