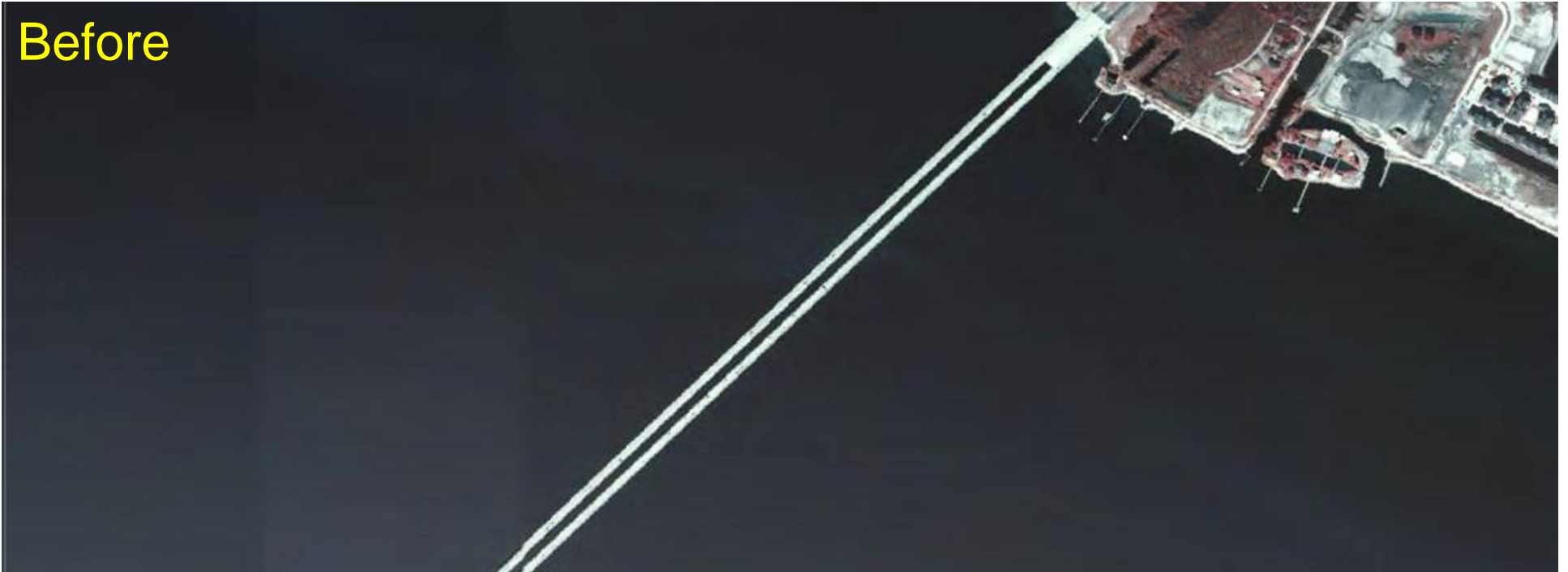


Before



## Economic Impact

Expected Stafford Act Expenditures \$40 billion or \$8,300 per capita for every man, woman & child in Louisiana

- ✓ Roads & Bridge Infrastructure Damages - estimated at \$5.5 Billion (DOTD)
- ✓ The Office of Fisheries preliminary revenue loss estimates
  - Potential \$1.29 billion loss in retail fisheries revenue over the next year related to Hurricane Katrina damages
  - Amount increases to \$1.3 billion when 2-year retail oyster sales losses are added
  - Over \$400 million in estimated losses for the recreational fishing industry



# Hurricane Katrina

## Louisiana

### Number Of Wrecked Vessels By State

