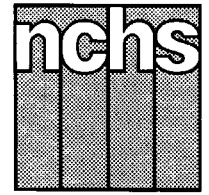


# Monthly Vital Statistics Report



Provisional Data From the CENTERS FOR DISEASE CONTROL AND PREVENTION/National Center for Health Statistics

## Births, Marriages, Divorces, and Deaths for June 1997

### Births

According to provisional reports, an estimated 323,000 births occurred in the United States during June 1997. This was a 6-percent increase from the provisional number of births reported for June 1996 (304,000). The birth rate, 14.7 live births per 1,000 population, was 5 percent higher than the rate of 14.0 for June 1996. The fertility rate, 65.7 live births per 1,000 women aged 15–44 years, was 6 percent higher than the comparable rate for June 1996 (62.2). The seasonally adjusted fertility rate (64.4) was also 6 percent higher than the comparable rate for June 1996 (61.0).

During the first half of 1996, an estimated 1,873,000 births occurred, a

1-percent decrease from the 1,889,000 reported for the first half of 1996. The birth rate for this period decreased by 2 percent from 14.4 in 1996 to 14.1 in 1997. The fertility rate for the first half of 1997 was 63.3, 1 percent lower than the rate for the first half of 1996 (63.8).

An estimated 3,883,000 live births occurred in the 12-month period ending with June 1997, an increase of 1 percent from the 3,853,000 births reported for the same period a year earlier. The birth rate of 14.6 was the same as the rate for the preceding 12-month period. The fertility rate for the most recent 12-month period was 65.1, 1 percent higher than the rate for the 12 months ending with June 1996 (64.7). This combination of a constant birth rate

and a higher fertility rate suggests a slow-down of the generally downward trend observed since early 1991.

### Natural increase

As a result of natural increase, the excess of births over deaths, an estimated 141,000 people, or 6.4 persons per 1,000 population, were added to the population during June 1997.

For the 12-month period ending with June 1997, 1,587,000 persons were added to the population. This represented a rate of natural increase of 6.0, 3 percent higher than the rate of 5.8 for the preceding 12-month period. The rise in the rate of natural increase was due to a steady birth rate and a declining death rate.

### Provisional Vital Statistics for the United States

[Rates for infant deaths are deaths under 1 year per 1,000 live births; fertility rates are live births per 1,000 women aged 15–44 years; all other rates are per 1,000 total population. Data are subject to monthly reporting variation; see [Technical notes](#)]

Item	June				January–June				12 months ending with June				
	Number		Rate		Number		Rate		Number		Rate		
	1997	1996	1997	1996	1997	1996	1997	1996	1997	1996	1997	1996	1995
Live births . . . . .	323,000	304,000	14.7	14.0	1,873,000	1,889,000	14.1	14.4	3,883,000	3,853,000	14.6	14.6	15.1
Fertility rate . . . . .	...	...	65.7	62.2	...	...	63.3	63.8	...	...	65.1	64.7	66.7
Deaths . . . . .	182,000	179,000	8.3	8.2	1,172,000	1,187,000	8.9	9.0	2,296,000	2,311,000	8.6	8.8	8.8
Infant deaths . . . . .	2,100	2,300	6.7	7.6	13,200	14,200	7.0	7.5	27,100	28,500	7.0	7.4	7.7
Natural increase . . . . .	141,000	125,000	6.4	5.8	701,000	702,000	5.2	5.4	1,587,000	1,542,000	6.0	5.8	6.3
Marriages . . . . .	235,000	242,000	10.7	11.2	1,109,000	1,058,000	8.6	8.2	2,395,000	2,322,000	9.0	8.8	9.0
Divorces . . . . .	99,000	103,000	4.5	4.8	578,000	574,000	4.4	4.4	1,154,000	1,154,000	4.3	4.4	4.5
Population base (in millions) . . . . .	...	...	267.4	265.0	...	...	...	...	...	...	266.5	264	261.6

... Category not applicable.

NOTES: Figures include revisions received from the States. Twelve-month figures for the current year reflect revisions received for previous months, and figures for earlier years may differ from those previously published.



U.S. DEPARTMENT OF HEALTH AND HUMAN SERVICES  
Centers for Disease Control and Prevention  
National Center for Health Statistics



### Marriages

There were an estimated 235,000 marriages performed in June 1997, 3 percent fewer than in June 1996 (242,000). The marriage rate per 1,000 population for June was 4 percent lower in 1997 (10.7) than in 1996 (11.2).

The number of marriages for the first half of 1997 was 1,109,000, 5 percent more than for the same period in 1996 (1,058,000). The marriage rate for January–June rose 5 percent, from 8.2 in 1996 to 8.6 in 1997.

The number of marriages performed during the 12 months ending with June 1997 (2,395,000) was 3 percent more than the number for the same period a year earlier (2,322,000). The marriage rate for the current 12-month period (9.0) was 2 percent higher than the rate for the comparable period ending with June 1996 (8.8).

### Divorces

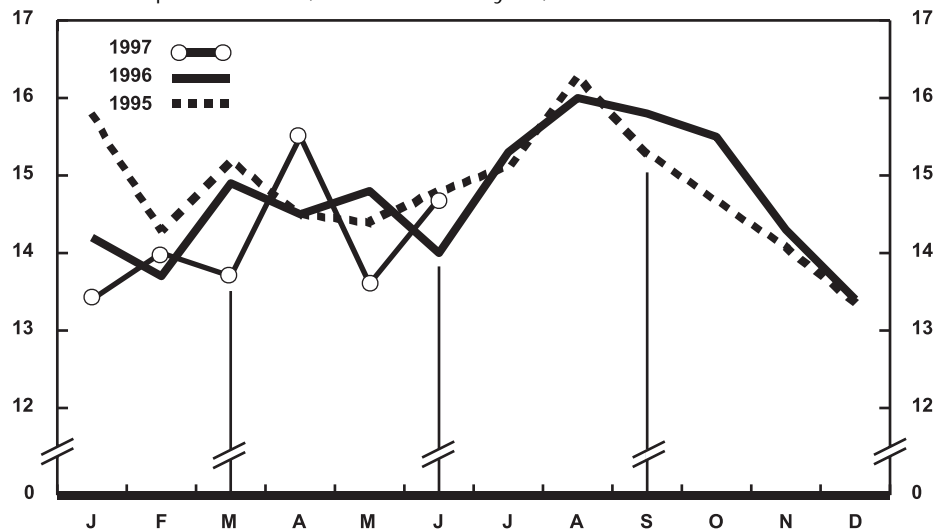
Approximately 99,000 divorces were granted during June 1997, 4 percent fewer than the number reported for June 1996 (103,000). The divorce rate per 1,000 population (4.5) for June 1997 was 6 percent lower than the rate for June 1996 (4.8).

The cumulative number of divorces for the first half of 1997 (578,000) was 1 percent higher than the number of divorces reported for the same period in 1996 (574,000). The divorce rate per 1,000 population (4.4) for January–June 1997 was the same as the rate for the 6-month period in 1996.

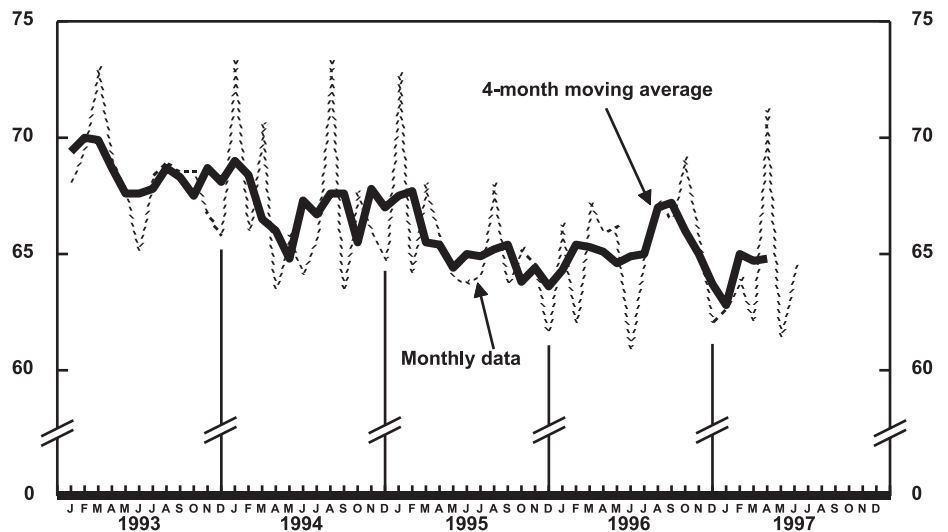
An estimated 1,154,000 divorces were granted during the 12-month period ending with June 1997, the same number that were granted during the same period a year earlier. However, the divorce rate for the period ending with June 1997 (4.3) was 2 percent lower than the rate for the period ending with June 1996 (4.4).

### Deaths

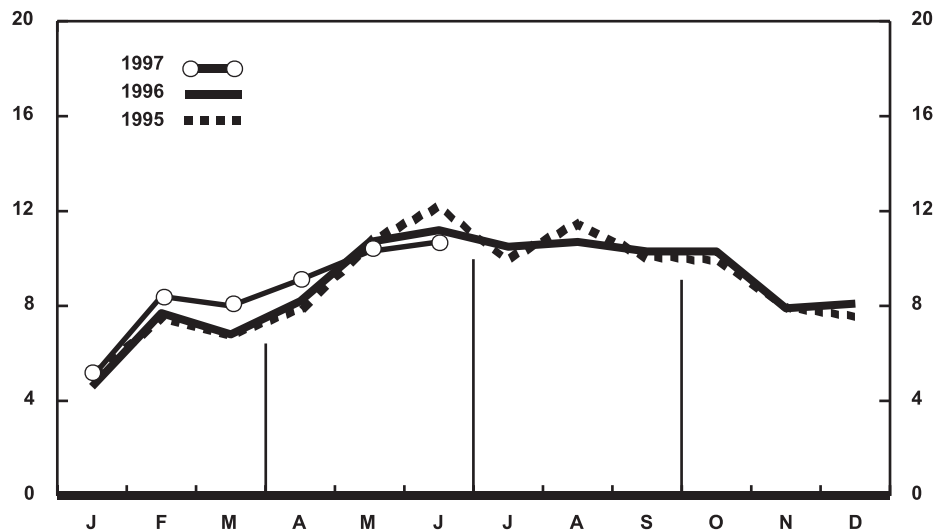
For June 1997 there were an estimated 182,000 deaths in the United States. The death rate was 8.3 deaths per 1,000 population, 1 percent higher than the rate of 8.2 for June a year earlier. Among the 182,000 deaths for June 1997 were 2,100 deaths at ages under 1 year.



Provisional birth rates per 1,000 population by month: United States, 1995-97



Provisional seasonally adjusted fertility rates per 1,000 women aged 15-44 years: United States, 1993-97



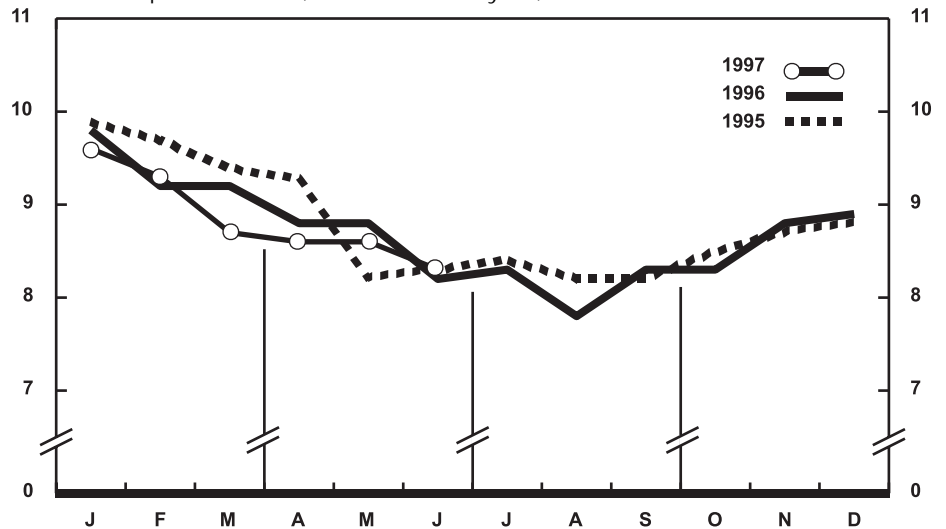
Provisional marriage rates per 1,000 population by month: United States, 1995-97

According to provisional statistics, there were 1,172,000 deaths during the first half of 1997, 1 percent fewer than the number estimated for the first half of 1996 (1,187,000). The death rate, 8.9 per 1,000 population, was 1 percent lower than the rate for January–June 1996 (9.0). Among the 1,172,000 deaths for the first half of 1997 were 13,200 deaths at ages under 1 year, yielding an infant mortality rate of 7.0 per 1,000 live births. This rate was 7 percent lower than the rate of 7.5 for the first half of 1996.

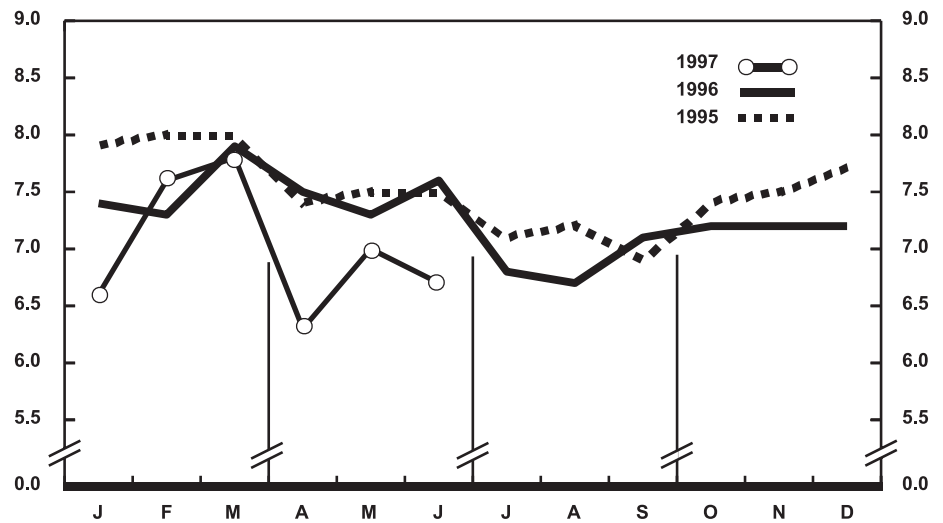
The death rate for the 12 months ending with June 1997 was 8.6 deaths per 1,000 population, 2 percent lower than the rate for the comparable 12-month period a year earlier (8.8). The infant mortality rate for this 12-month period was 7.0 per 1,000 live births, 5 percent lower than the rate of 7.4 for the 12 months ending with June 1996.

*Current Mortality Sample, 12 months ending with May 1997*—The provisional death rate for the 12 months ending with May 1997 was 860.8 per 100,000 population, 1.8 percent lower than the rate for the 12-month period ending May 1996 (876.5). The provisional age-adjusted death rate for the 12-month period ending with May 1997 was 481.4 per 100,000 U.S. standard population, 3.5 percent lower than the rate of 499.0 for the 12-month period ending with May 1996. Age-adjusted death rates control for changes and variations in the age composition of the population; therefore, they are better indicators than crude rates for showing changes in mortality risk over time and for showing differences between race-sex groups within the population. Among the race-sex groups, the estimated age-adjusted death rates decreased for all four race-sex groups. By age the death rate for the total population decreased for all age groups except for Under 1 year, 5–14 years of age, and 85 years and over.

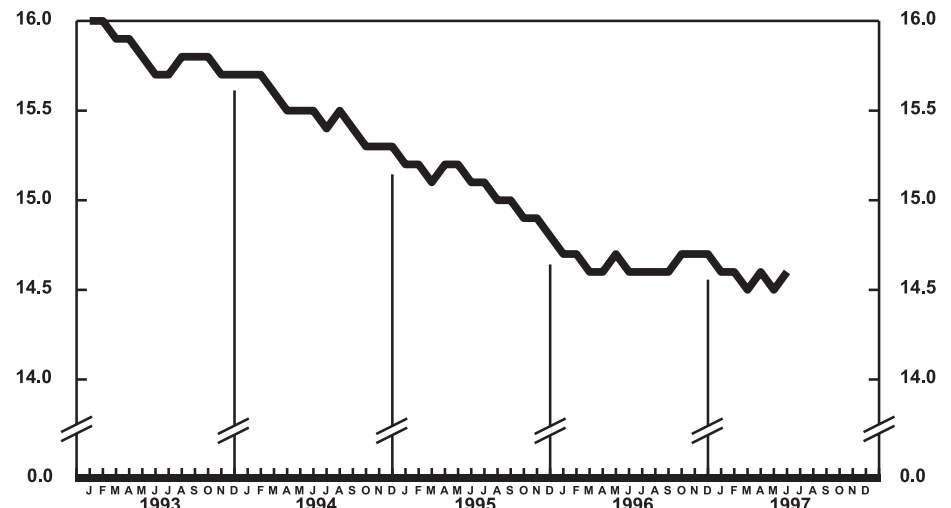
Among the major causes of death, the estimated death rate decreased between the two successive 12-month periods for Diseases of heart, Malignant neoplasms, including neoplasms of lymphatic and hematopoietic tissues, Homicide and legal intervention, and Human immunodeficiency virus infection. The decrease for Homicide and legal intervention was largely due to the decline in the rate for



Provisional death rates per 1,000 population by month: United States, 1995–97



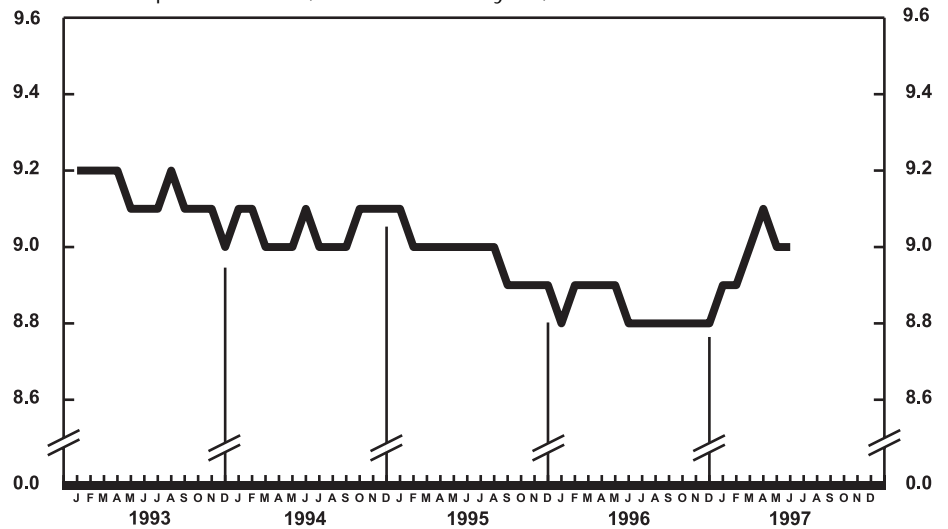
Provisional infant mortality rates per 1,000 live births by month: United States, 1995–97



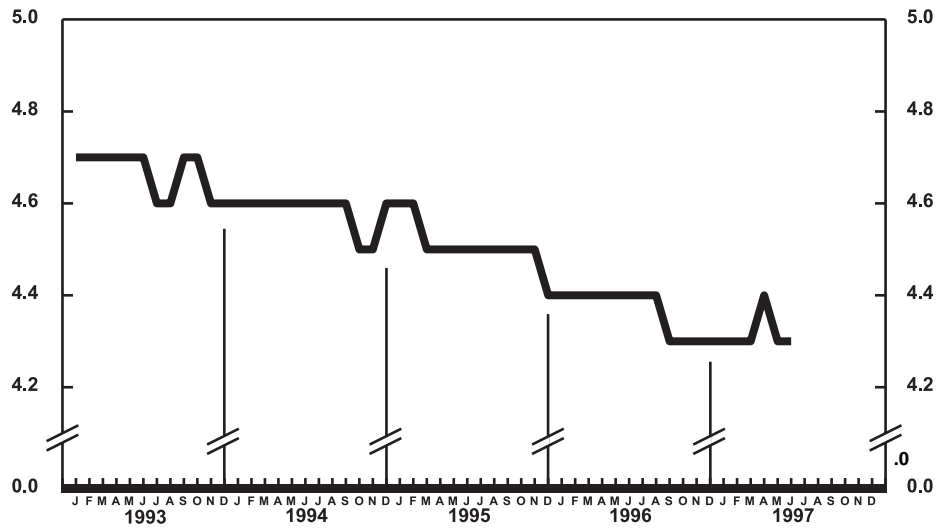
Provisional birth rates per 1,000 population for successive 12-month periods ending with month indicated: United States, 1993–97

homicide by firearms. The death rate increased between the two successive 12-month periods for Pneumonia and influenza.

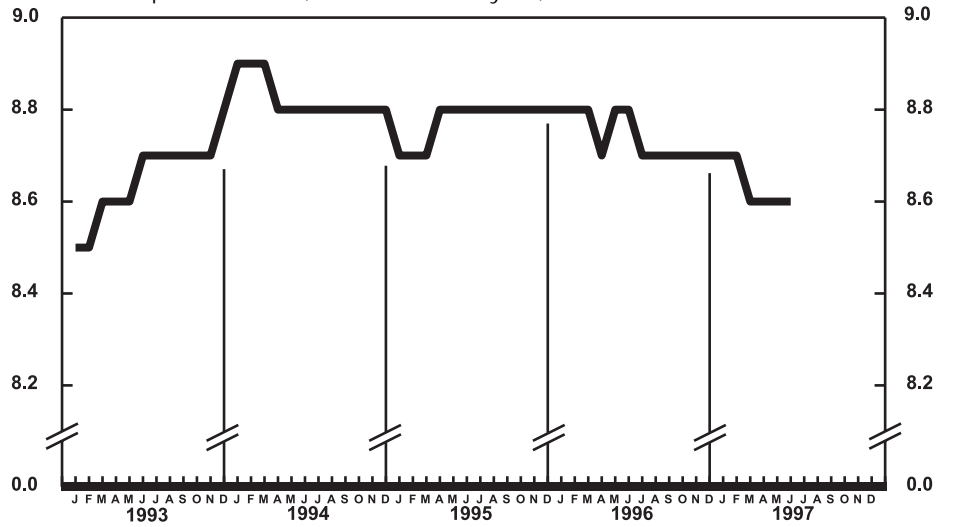
The infant mortality rate for the 12 months ending with May 1997 was 708.2 per 100,000 live births, 4.5 percent lower than the rate of 741.7 for the same 12-month period a year earlier. For infants under 28 days of age, the 12-month rate ending May 1997 was 458.9 compared with a rate of 477.5 for the 12-month period a year earlier. The infant mortality rate for infants aged 28 days–11 months was 249.2 compared with a rate of 263.7 for the 12-month period a year earlier. The changes in the mortality rates for infants under 28 days of age and for those aged 28 days–11 months were not statistically significant. Among causes of infant death, the infant mortality rate decreased between the two successive 12-month periods for Birth trauma and Sudden infant death syndrome.



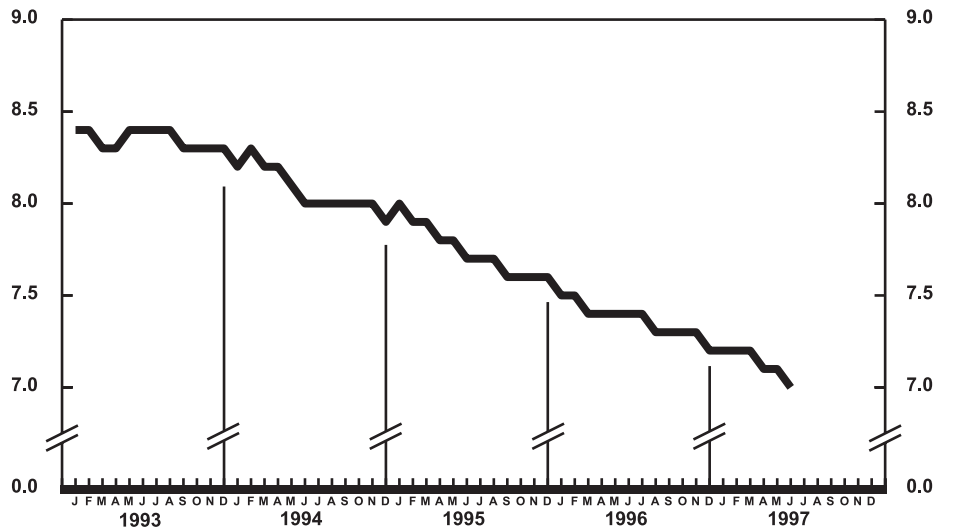
Provisional marriage rates per 1,000 population for successive 12-month periods ending with month indicated: United States, 1993–97



Provisional divorce rates per 1,000 population for successive 12-month periods ending with month indicated: United States, 1993–97



Provisional death rates per 1,000 population for successive 12-month periods ending with month indicated: United States, 1993-97



Provisional infant mortality rates per 1,000 live births for successive 12-month periods ending with month indicated: United States, 1993-97

**Table 1. Provisional number of live births, marriages, divorces, deaths, and infant deaths and rates, by month: United States, January 1996–June 1997**

[Data are provisional and are subject to monthly reporting variation; see [Technical notes](#)]

Period	Live births				Marriages		Divorces		Deaths		Infant deaths	
	Number	Rate per 1,000 women aged 15–44 years		Number	Rate per 1,000 population	Number	Rate per 1,000 population	Number	Rate per 1,000 population	Number	Rate per 1,000 live births	
		Unadjusted	Seasonally adjusted <sup>1</sup>									
<b>1996:</b>												
January . . . . .	318,000	14.2	63.2	66.3	100,000	4.6	94,000	4.2	220,000	9.8	2,400	7.4
February . . . . .	286,000	13.7	60.7	62.0	155,000	7.7	85,000	4.1	193,000	9.2	2,200	7.3
March . . . . .	334,000	14.9	66.3	67.3	147,000	6.8	93,000	4.2	206,000	9.2	2,600	7.9
April . . . . .	314,000	14.5	64.3	65.9	172,000	8.2	95,000	4.4	192,000	8.8	2,300	7.5
May . . . . .	332,000	14.8	65.7	66.2	241,000	10.7	103,000	4.6	198,000	8.8	2,400	7.3
June . . . . .	304,000	14.0	62.2	61.0	242,000	11.2	103,000	4.8	179,000	8.2	2,300	7.6
July . . . . .	343,000	15.3	67.9	65.2	235,000	10.5	96,000	4.3	187,000	8.3	2,300	6.8
August . . . . .	360,000	16.0	71.3	67.3	239,000	10.7	101,000	4.5	176,000	7.8	2,200	6.7
September . . . . .	345,000	15.8	70.6	66.5	225,000	10.3	92,000	4.2	182,000	8.3	2,400	7.1
October . . . . .	348,000	15.5	68.9	69.2	231,000	10.3	99,000	4.4	188,000	8.3	2,500	7.2
November . . . . .	313,000	14.3	63.9	66.0	171,000	7.9	94,000	4.3	191,000	8.8	2,300	7.2
December . . . . .	302,000	13.4	59.8	62.1	184,000	8.1	94,000	4.2	200,000	8.9	2,300	7.2
<b>1997:</b>												
January . . . . .	303,000	13.4	59.8	62.7	109,000	5.0	93,000	4.1	218,000	9.6	2,100	6.6
February . . . . .	287,000	14.0	62.7	63.9	165,000	8.4	87,000	4.2	191,000	9.3	2,200	7.6
March . . . . .	311,000	13.7	61.4	62.2	174,000	8.0	94,000	4.2	197,000	8.7	2,500	7.8
April . . . . .	340,000	15.5	69.4	71.2	192,000	9.1	106,000	4.8	189,000	8.6	2,100	6.3
May . . . . .	309,000	13.6	61.0	61.4	234,000	10.3	98,000	4.3	195,000	8.6	2,200	7.0
June . . . . .	323,000	14.7	65.7	64.4	235,000	10.7	99,000	4.5	182,000	8.3	2,100	6.7

<sup>1</sup>The method of seasonal adjustment, developed by the U.S. Bureau of the Census, is described in *The X-11 Variant of the Census Method II Seasonal Adjustment Program*, Technical Paper No. 15 (1967 revision).

NOTE: Figures include all revisions received from the States and, therefore, may differ from those previously published.

**Table 2. Provisional number of live births and deaths: Each division and State, June 1996 and 1997, and cumulative figures, 1995–97**

[Data are estimates by State of residence; see [Technical notes](#)]

Area	Live births					Deaths				
	June		January–June			June		January–June		
	1997	1996	1997	1996	1995	1997	1996	1997	1996	1995
New England	15,754	16,708	89,556	86,338	95,699	9,283	9,443	61,639	57,821	60,860
Maine	1,094	1,181	6,717	6,741	6,834	926	701	5,742	5,427	5,722
New Hampshire	1,167	1,362	6,916	6,734	7,097	759	703	4,975	4,576	4,749
Vermont	518	545	3,204	3,375	3,407	349	466	2,757	2,640	2,739
Massachusetts	7,284	9,198	46,221	44,601	47,137	4,503	4,787	28,596	26,999	28,718
Rhode Island	1,097	1,000	6,004	6,096	5,964	734	695	5,049	4,725	4,863
Connecticut	4,594	3,422	20,494	18,791	25,260	2,012	2,091	14,520	13,454	14,069
Middle Atlantic	39,059	42,377	249,153	256,556	252,933	28,741	27,036	187,575	186,640	192,517
New York	19,520	20,116	125,631	131,258	129,199	12,939	11,954	84,818	84,680	87,876
New Jersey	10,023	10,362	54,115	51,307	47,321	5,566	5,667	35,827	36,736	38,959
Pennsylvania	9,516	11,899	69,407	73,991	76,413	10,236	9,415	66,930	65,224	65,682
East North Central	52,349	50,528	296,082	303,967	303,253	30,693	31,025	196,904	200,627	198,933
Ohio	13,893	12,662	71,509	71,627	74,367	8,117	8,765	53,270	53,817	52,986
Indiana	5,808	6,404	37,099	39,422	36,791	4,192	4,578	25,881	27,731	25,942
Illinois	15,359	14,914	87,926	89,116	91,132	8,121	8,154	51,783	53,354	54,713
Michigan	11,723	11,430	66,573	70,760	67,152	6,425	6,197	42,355	42,548	42,495
Wisconsin	5,566	5,118	32,975	33,042	33,811	3,838	3,331	23,615	23,177	22,797
West North Central	21,203	20,476	126,750	123,957	124,876	14,667	13,821	90,254	86,268	86,566
Minnesota	5,613	5,080	32,393	31,380	31,104	2,818	2,872	19,102	18,638	18,769
Iowa	2,878	2,757	17,795	15,991	16,077	2,498	2,118	14,656	13,481	13,247
Missouri	6,067	7,281	36,877	37,718	36,674	5,343	4,805	29,149	27,916	28,167
North Dakota	698	734	4,187	4,102	4,407	589	447	3,271	2,947	3,089
South Dakota	958	722	5,188	4,640	5,460	512	524	3,623	3,102	3,535
Nebraska	1,564	2,121	11,833	11,572	11,484	942	1,358	7,718	7,768	7,665
Kansas	3,425	1,781	18,477	18,554	19,670	1,965	1,697	12,735	12,416	12,094
South Atlantic	55,343	52,692	324,640	316,748	324,689	35,015	33,474	227,559	230,234	226,158
Delaware	926	711	4,997	4,972	4,953	493	499	3,284	3,290	3,173
Maryland	5,656	4,827	32,011	33,753	36,509	3,307	3,064	19,897	21,140	20,883
District of Columbia	711	659	4,079	4,046	4,520	480	484	3,059	3,149	3,301
Virginia	8,137	8,001	43,131	42,056	46,144	4,235	4,032	27,184	26,534	27,243
West Virginia	1,816	1,657	10,854	9,450	10,965	1,696	1,561	11,207	9,665	10,361
North Carolina	8,792	8,299	52,957	50,892	50,780	4,995	5,266	34,075	34,727	33,243
South Carolina	3,700	3,866	24,952	25,040	24,611	2,454	2,446	16,348	17,746	16,603
Georgia	10,131	8,694	58,607	56,491	57,513	5,431	4,203	31,727	31,351	30,414
Florida	15,474	15,978	93,052	90,048	88,694	11,924	11,919	80,778	82,632	80,937
East South Central	18,845	17,975	108,607	108,761	109,430	12,285	11,921	83,116	81,449	81,712
Kentucky	4,632	3,866	26,045	25,513	24,697	2,898	2,741	20,117	19,495	20,426
Tennessee	6,143	6,119	35,066	34,201	35,392	4,001	4,112	27,109	25,732	26,060
Alabama	4,776	5,247	29,116	30,037	29,854	3,352	3,045	22,108	22,368	21,595
Mississippi	3,294	2,743	18,380	19,010	19,487	2,034	2,023	13,782	13,854	13,631
West South Central	37,641	33,053	219,900	216,086	242,847	18,700	17,012	116,360	121,790	122,399
Arkansas	3,092	2,850	17,037	16,834	16,118	1,513	2,011	12,163	13,038	12,673
Louisiana	5,411	4,361	31,540	32,203	32,944	3,789	2,909	20,188	21,618	20,362
Oklahoma	3,371	3,102	22,331	22,181	22,645	2,401	2,448	17,193	17,148	16,666
Texas <sup>1</sup>	25,767	22,740	148,992	144,868	171,140	10,997	9,644	66,816	69,986	72,698
Mountain	21,710	20,093	136,388	125,103	123,501	9,922	10,433	60,664	62,940	58,827
Montana	793	873	5,088	5,365	5,534	656	630	3,900	3,884	3,855
Idaho	1,353	1,417	8,415	9,269	8,616	742	655	4,588	4,242	4,250
Wyoming	583	543	3,135	3,012	3,268	284	292	1,870	1,726	1,869
Colorado	5,041	3,825	28,511	24,187	25,879	1,872	2,144	12,973	13,189	12,943
New Mexico	2,195	1,974	13,000	12,902	13,186	957	1,005	7,003	6,767	6,320
Arizona	5,627	6,307	45,028	40,985	38,080	3,345	3,867	17,842	20,690	17,752
Utah	3,826	2,621	21,248	18,752	19,016	1,050	791	5,856	5,621	5,445
Nevada	2,292	2,533	11,963	10,631	9,922	1,016	1,049	6,632	6,821	6,393
Pacific	60,359	49,786	317,805	344,712	350,302	23,129	24,475	148,366	159,137	155,609
Washington	6,934	5,047	37,891	39,100	37,531	3,099	2,981	22,182	19,916	19,303
Oregon	3,987	3,469	22,963	22,819	22,503	2,240	1,982	15,444	14,419	14,385
California <sup>1</sup>	47,315	38,954	243,839	268,646	276,150	17,033	18,608	105,729	119,560	117,004
Alaska	745	768	4,718	4,971	5,321	176	250	1,057	1,188	1,066
Hawaii	1,378	1,548	8,394	9,176	8,797	581	654	3,954	4,054	3,851
Puerto Rico <sup>2</sup>	4,777	4,759	31,796	28,690	29,693	2,139	1,985	14,359	13,389	14,892

<sup>1</sup>Figures include adjustments for varying lengths of reporting periods; see [Technical notes](#).

<sup>2</sup>Data for Puerto Rico are not included in U.S. total figures.

NOTES: Figures include all revisions received from the States. Cumulative figures for the current year reflect revisions received for previous months, and figures for earlier years may differ from those previously published.



**Table 3. Provisional number of marriages and divorces: Each division and State, June 1996 and 1997, and cumulative figures, 1995–97**

[By State of occurrence. Number of events reported; see [Technical notes](#). Divorces include reported annulments]

Area	Marriages					Divorces				
	June		January–June			June		January–June		
	1997	1996	1997	1996	1995	1997	1996	1997	1996	1995
New England	19,283	10,999	135,654	35,928	38,038	3,774	3,380	20,662	17,207	19,761
Maine	---	1,116	---	3,030	3,831	527	224	1,914	1,860	2,347
New Hampshire	915	917	3,510	3,186	3,085	327	498	2,846	2,462	2,473
Vermont	474	493	1,911	1,866	1,991	106	121	1,417	1,328	1,604
Massachusetts	4,513	4,803	17,179	16,340	17,803	1,463	1,502	7,685	4,868	6,693
Rhode Island	970	1,063	3,584	3,222	2,722	219	240	1,477	1,615	1,870
Connecticut	2,411	2,607	9,470	8,284	8,606	1,132	795	5,323	5,074	4,774
Middle Atlantic	27,137	21,875	140,119	104,615	115,083	11,334	11,949	63,799	61,484	59,809
Ohio	13,055	8,200	84,562	54,538	61,037	4,868	5,277	31,472	29,259	26,825
New Jersey	5,447	5,506	26,802	21,191	21,363	2,709	2,735	13,832	13,450	13,147
Pennsylvania	8,635	8,169	28,755	28,886	32,683	3,757	3,937	18,495	18,775	19,837
East North Central	33,206	37,919	133,107	135,047	143,928	11,984	11,095	168,596	169,091	175,130
Ohio	8,707	9,954	35,237	34,082	39,018	3,932	2,871	21,988	21,156	24,934
Indiana	2,815	5,800	15,106	20,988	22,184	---	---	---	---	---
Illinois	9,943	9,859	42,784	37,648	38,822	3,485	4,086	19,043	19,862	20,873
Michigan	7,163	7,869	25,372	27,839	29,038	3,203	2,699	19,041	19,671	20,401
Wisconsin	4,578	4,437	14,608	14,490	14,866	1,364	1,439	8,524	8,402	8,922
West North Central	16,399	18,766	61,150	65,167	63,482	8,002	6,588	36,388	37,768	37,151
Minnesota	3,887	4,141	13,101	13,374	13,233	1,374	1,223	7,276	7,373	7,740
Iowa	2,676	2,999	8,987	9,709	9,168	873	887	5,003	5,024	5,412
Missouri	5,194	6,617	20,144	22,705	21,469	2,462	2,514	12,604	13,365	13,880
North Dakota	347	646	1,387	1,981	1,900	180	202	971	1,182	1,105
South Dakota	870	840	2,870	2,836	3,160	231	227	1,351	1,340	1,422
Nebraska	1,475	1,627	5,832	5,932	5,705	553	522	3,239	3,045	3,140
Kansas	1,950	1,896	8,829	8,630	8,847	2,329	1,013	5,944	6,439	4,452
South Atlantic	40,038	43,531	222,076	211,315	214,396	20,131	20,858	117,757	107,103	113,329
Delaware	589	652	2,479	2,405	2,362	330	292	1,613	1,707	1,936
Maryland	5,313	4,930	19,397	18,432	18,009	1,580	1,998	7,313	7,633	7,236
District of Columbia	549	234	1,040	884	820	46	83	436	527	705
Virginia	6,564	7,183	31,180	29,030	31,777	2,591	2,300	16,296	13,464	13,550
West Virginia	1,087	1,433	4,001	4,714	3,998	774	782	4,726	3,576	4,420
North Carolina	7,373	6,769	32,090	27,839	29,963	3,398	3,989	19,177	17,874	18,785
South Carolina	4,153	4,195	21,183	21,599	22,147	1,045	1,658	7,320	7,691	7,012
Georgia	2,177	6,115	25,464	29,580	29,675	3,355	3,250	18,973	17,607	18,700
Florida	12,233	12,020	85,242	76,832	75,645	7,012	6,506	41,903	37,024	40,985
East South Central	17,975	19,687	88,335	87,088	90,555	7,359	10,934	41,186	51,217	48,373
Kentucky	4,747	4,181	21,459	19,063	22,519	1,641	1,521	10,602	10,603	11,310
Tennessee	6,037	8,841	33,799	35,651	40,037	2,295	2,997	12,573	17,857	17,237
Alabama	5,016	4,382	21,974	22,023	18,093	2,202	2,513	10,915	13,274	12,985
Mississippi	2,175	2,283	11,103	10,351	9,906	1,221	3,903	7,096	9,483	6,841
West South Central	27,808	29,435	135,015	136,124	150,719	13,130	10,959	115,748	167,146	169,050
Arkansas	3,500	3,477	15,250	15,747	15,864	1,500	1,738	6,600	6,896	6,783
Louisiana	4,431	4,247	11,060	18,203	18,488	---	---	---	---	---
Oklahoma	3,234	2,936	14,070	13,726	14,250	1,630	1,619	9,148	10,196	10,978
Texas <sup>3</sup>	16,643	18,775	94,635	88,448	102,117	---	7,602	---	50,054	51,289
Mountain	115,013	25,956	166,286	135,301	131,944	14,993	15,631	130,182	137,032	136,542
Montana	846	796	2,561	2,658	2,708	351	406	1,958	2,192	1,995
Idaho	1,476	1,475	6,569	6,295	6,756	477	483	3,682	3,540	3,321
Wyoming	568	602	2,099	2,028	2,029	252	240	1,463	1,612	1,691
Colorado	3,896	4,345	15,347	15,531	15,435	---	---	---	---	---
New Mexico <sup>4,5</sup>	1,641	1,507	8,157	8,111	7,283	687	832	4,930	5,738	5,562
Arizona <sup>2</sup>	3,366	3,698	21,435	21,015	20,058	2,476	2,194	13,745	12,816	13,018
Utah	3,220	1,846	10,118	9,525	10,121	750	741	4,404	4,360	4,575
Nevada	---	11,687	---	70,138	67,554	---	735	---	6,774	6,380
Pacific	128,550	21,991	142,640	140,342	120,508	12,773	13,921	116,984	124,694	126,249
Washington	4,193	2,928	18,643	17,241	18,625	2,219	2,209	13,443	13,611	14,608
Oregon	---	2,091	---	9,816	11,711	---	1,081	---	7,351	7,645
California	22,046	14,500	111,953	101,283	78,836	---	---	---	---	---
Alaska	470	594	2,180	2,276	2,379	86	200	1,198	1,323	1,398
Hawaii	1,841	1,878	9,864	9,726	8,957	468	431	2,343	2,409	2,598
Puerto Rico <sup>6</sup>	2,826	2,493	14,516	14,121	15,132	---	---	---	---	---

--- Data not available.

<sup>1</sup>Excludes figures for State(s) shown below as not available.

<sup>2</sup>Figures for marriages are marriage licenses issued for some counties.

<sup>3</sup>Figures include adjustments for varying lengths of reporting periods; see [Technical notes](#).

<sup>4</sup>Figures for marriages are marriage licenses issued.

<sup>5</sup>Figures for divorces include estimates for some counties.

<sup>6</sup>Data for Puerto Rico are not included in U.S. total figures.

NOTES: Figures include all revisions received from the States. Cumulative figures for the current year reflect revisions received for previous months, and figures for earlier years may differ from those previously published.



**Table 4. Provisional number of deaths under 1 year and infant mortality rates: Each division and State, 12 months ending with June 1996 and 1997**

[Data are estimates by State of residence. Figures should be interpreted with caution because of conversion from place of occurrence to place of residence; see [Technical notes](#). Infant mortality rates are deaths under 1 year per 1,000 live births in specified area]

Area	12 months ending with June			
	1997		1996	
	Number	Rate	Number	Rate
New England . . . . .	962	5.5	869	5.1
Maine . . . . .	50	3.7	72	5.2
New Hampshire . . . . .	73	5.1	65	4.4
Vermont . . . . .	48	7.3	54	8.0
Massachusetts . . . . .	409	5.0	375	4.5
Rhode Island . . . . .	75	6.0	84	6.5
Connecticut . . . . .	307	6.7	219	5.7
Middle Atlantic . . . . .	3,540	6.7	3,832	7.2
New York . . . . .	1,674	6.3	1,909	7.2
New Jersey . . . . .	803	6.9	787	6.6
Pennsylvania . . . . .	1,063	7.3	1,136	7.6
East North Central . . . . .	4,653	7.5	5,167	8.3
Ohio . . . . .	1,112	7.3	1,253	8.2
Indiana . . . . .	563	6.9	707	8.1
Illinois . . . . .	1,437	7.8	1,619	8.8
Michigan . . . . .	1,080	8.1	1,083	7.9
Wisconsin . . . . .	461	6.9	505	7.6
West North Central . . . . .	1,831	7.1	1,756	6.9
Minnesota . . . . .	417	6.4	375	5.9
Iowa . . . . .	194	5.3	213	5.9
Missouri . . . . .	625	8.6	556	7.3
North Dakota . . . . .	55	6.5	38	4.5
South Dakota . . . . .	58	5.5	70	7.2
Nebraska . . . . .	188	8.0	190	8.2
Kansas . . . . .	294	7.3	314	8.7
South Atlantic . . . . .	15,156	7.8	5,585	8.6
Delaware . . . . .	75	7.4	70	7.0
Maryland . . . . .	582	8.4	605	8.7
District of Columbia . . . . .	---	---	151	17.8
Virginia . . . . .	620	6.9	673	7.8
West Virginia . . . . .	151	7.2	157	8.1
North Carolina . . . . .	1,014	9.4	965	9.4
South Carolina . . . . .	414	8.2	428	8.5
Georgia . . . . .	968	8.3	1,080	9.6
Florida . . . . .	1,332	6.9	1,456	7.7
East South Central . . . . .	2,075	9.1	2,077	9.3
Kentucky . . . . .	430	8.1	406	7.8
Tennessee . . . . .	642	8.6	657	9.0
Alabama . . . . .	571	9.4	620	10.1
Mississippi . . . . .	432	10.6	394	10.7
West South Central . . . . .	3,145	6.7	3,312	7.4
Arkansas . . . . .	265	7.3	320	9.1
Louisiana . . . . .	585	8.9	580	8.7
Oklahoma . . . . .	402	8.9	411	9.0
Texas <sup>2</sup> . . . . .	1,893	5.9	2,001	6.7
Mountain . . . . .	1,927	7.2	1,718	7.1
Montana . . . . .	78	7.4	81	7.3
Idaho . . . . .	140	7.8	116	6.3
Wyoming . . . . .	31	4.9	51	8.4
Colorado . . . . .	391	7.5	347	7.2
New Mexico . . . . .	176	6.5	181	6.7
Arizona . . . . .	742	8.9	579	8.1
Utah . . . . .	236	5.4	219	5.7
Nevada . . . . .	133	5.4	144	6.5
Pacific . . . . .	3,831	5.7	4,229	6.0
Washington . . . . .	417	5.3	369	4.6
Oregon . . . . .	272	6.2	233	5.4
California <sup>2</sup> . . . . .	2,986	5.8	3,448	6.2
Alaska . . . . .	63	6.3	73	7.5
Hawaii . . . . .	93	5.3	106	5.6
Puerto Rico <sup>3</sup> . . . . .	306	9.6	299	10.4

-- Data not available.

<sup>1</sup>Excludes figures for State(s) shown below as not available.

<sup>2</sup>Figures include adjustments for varying lengths of reporting periods; see [Technical notes](#).

<sup>3</sup>Data for Puerto Rico are not included in U.S. total figures.

NOTES: Figures include all revisions received from the States. Figures for the current year reflect revisions received for previous months, and figures for earlier years may differ from those previously published.

**Table 5. Provisional number of deaths and death rates, by age, race, and sex, and age-adjusted death rates by race and sex: United States, May 1996 and 1997, cumulative figures 1996 and 1997, and 12 months ending with May 1996 and 1997**

[Data are provisional, estimated from a 10-percent sample of deaths. Age-specific rates on an annual basis per 100,000 population in specified group; age-adjusted rates per 100,000 U.S. standard population; see [Technical notes](#). Because of rounding of estimates, figures may not add to totals. For method of computation and information on standard errors of the estimates, see [Technical notes](#)]

Age, race, and sex	May				January–May				12 months ending with May			
	1997		1996		1997		1996		1997		1996	
	Number	Rate	Number	Rate	Number	Rate	Number	Rate	Number	Rate	Number	Rate
<b>All races, both sexes<sup>1</sup></b>												
All ages	195,000	857.4	198,000	883.9	990,000	896.9	1,009,000	918.7	2,293,000	860.8	2,312,000	876.5
Under 1 year	} 3,310	67.4	3,690	75.1	11,100	<sup>2</sup> 716.0	11,900	<sup>2</sup> 740.1	27,300	<sup>2</sup> 728.3	28,600	<sup>2</sup> 742.3
1–4 years					2,250	35.4	2,770	42.6	5,330	34.6	6,410	41.0
5–14 years					3,350	20.9	3,470	21.8	8,680	22.5	8,400	21.9
15–24 years					2,270	73.2	2,810	92.4	12,560	83.4	13,410	90.0
25–34 years	3,880	114.9	4,700	137.1	19,080	115.6	22,660	134.6	48,640	121.3	56,570	139.3
35–44 years	7,030	188.4	8,710	238.3	36,620	201.9	41,800	233.8	91,240	208.8	102,010	238.0
45–54 years	11,740	412.4	12,240	449.8	59,860	435.4	60,170	453.2	142,500	432.6	142,710	450.0
55–64 years	19,990	1,087.6	20,300	1,125.6	98,100	1,095.9	101,280	1,147.3	231,250	1,075.2	235,250	1,109.1
65–74 years	38,690	2,460.0	41,070	2,593.3	195,620	2,549.3	207,420	2,668.1	465,320	2,502.0	475,240	2,534.1
75–84 years	58,130	5,868.4	56,930	5,910.5	289,530	6,020.7	290,660	6,179.2	657,600	5,685.6	656,180	5,822.9
85 years and over	49,430	15,136.5	47,680	15,161.1	261,460	16,507.1	252,700	16,459.0	580,840	15,233.1	563,720	15,318.5
Not stated	100	...	80	...	530	...	450	...	1,030	...	990	...
Age-adjusted rate <sup>3</sup>	...	473.0	...	503.2	...	491.5	...	515.8	...	481.4	...	499.0
<b>All races, male<sup>1</sup></b>												
All ages	97,250	875.4	100,020	913.1	491,080	908.9	508,270	947.8	1,147,990	880.7	1,173,240	910.5
Under 1 year	} 1,970	78.4	1,990	79.1	6,390	<sup>2</sup> 809.5	6,350	<sup>2</sup> 774.7	15,530	<sup>2</sup> 810.5	15,680	<sup>2</sup> 795.5
1–4 years					1,170	35.9	1,530	46.4	2,880	36.5	3,540	44.2
5–14 years					1,850	22.6	1,980	24.2	5,020	25.4	4,990	25.4
15–24 years					1,710	107.3	2,000	128.8	9,030	116.6	10,050	132.1
25–34 years	2,810	166.4	3,170	185.0	13,550	164.0	16,020	190.4	34,550	172.3	40,450	199.3
35–44 years	4,570	246.2	5,750	317.0	24,550	272.3	28,450	320.8	61,410	282.6	69,820	328.4
45–54 years	7,680	551.3	7,630	574.0	37,620	559.3	38,240	589.4	89,670	556.2	90,790	586.0
55–64 years	12,360	1,411.9	12,150	1,416.1	59,210	1,388.5	60,770	1,447.2	139,710	1,364.5	141,230	1,400.0
65–74 years	21,960	3,125.0	23,560	3,339.3	111,520	3,253.9	117,830	3,403.0	262,480	3,161.6	271,750	3,255.3
75–84 years	27,880	7,123.8	27,870	7,387.6	139,630	7,359.7	143,430	7,797.1	319,510	7,012.9	322,980	7,345.5
85 years and over	16,220	17,283.0	15,830	17,867.7	86,200	18,978.3	83,280	19,284.6	192,230	17,635.8	185,030	17,894.6
Not stated	90	...	60	...	390	...	330	...	690	...	690	...
Age-adjusted rate <sup>3</sup>	...	600.4	...	636.6	...	619.1	...	657.3	...	608.4	...	639.2
<b>All races, female<sup>1</sup></b>												
All ages	97,320	840.2	98,190	856.0	498,920	885.5	500,380	890.9	1,144,520	841.8	1,137,420	842.7
Under 1 year	} 1,340	55.9	1,700	70.9	4,670	<sup>2</sup> 618.2	5,510	<sup>2</sup> 705.1	11,760	<sup>2</sup> 642.3	12,880	<sup>2</sup> 685.5
1–4 years					1,080	34.5	1,240	38.8	2,450	32.5	2,870	37.6
5–14 years					1,500	19.3	1,490	19.0	3,660	19.4	3,410	18.2
15–24 years					560	37.2	810	54.4	3,530	48.2	3,360	46.0
25–34 years	1,070	63.4	1,530	89.2	5,530	67.0	6,640	78.8	14,090	70.3	16,120	79.3
35–44 years	2,450	130.6	2,960	160.7	12,070	132.4	13,350	148.2	29,830	135.8	32,180	149.0
45–54 years	4,060	279.3	4,600	330.5	22,240	316.7	21,930	322.8	52,830	314.0	51,910	320.1
55–64 years	7,630	792.7	8,140	860.9	38,890	829.4	40,510	875.3	91,540	812.4	94,020	845.4
65–74 years	16,730	1,922.9	17,510	1,993.9	84,110	1,980.7	89,580	2,077.7	202,840	1,970.1	203,490	1,955.7
75–84 years	30,250	5,048.5	29,060	4,959.5	149,900	5,149.0	147,230	5,140.4	338,090	4,823.0	333,200	4,849.4
85 years and over	33,210	14,270.8	31,850	14,099.6	175,260	15,514.8	169,430	15,354.1	388,620	14,277.0	378,700	14,312.2
Not stated	10	...	20	...	140	...	120	...	340	...	300	...
Age-adjusted rate <sup>3</sup>	...	365.4	...	393.0	...	385.0	...	398.7	...	374.9	...	382.1
<b>White</b>												
All ages	168,930	900.1	170,260	916.3	858,940	940.6	869,880	955.8	1,976,500	896.7	1,987,040	908.2
Under 1 year	} 2,300	59.2	2,530	65.1	7,370	<sup>2</sup> 601.7	7,810	<sup>2</sup> 625.8	17,660	<sup>2</sup> 593.6	19,080	<sup>2</sup> 634.3
1–4 years					1,690	33.3	1,910	37.5	3,710	30.4	4,500	36.4
5–14 years					2,530	20.1	2,500	19.7	6,370	20.9	6,240	20.5
15–24 years					1,550	62.9	2,050	84.6	8,870	74.0	9,400	79.0
25–34 years	2,890	105.7	3,280	117.5	13,890	103.8	15,770	114.9	34,700	106.7	39,230	118.4
35–44 years	5,060	163.4	6,280	206.4	26,630	176.8	30,050	201.9	66,400	182.9	73,370	205.6
45–54 years	8,980	370.7	9,210	396.6	46,420	396.8	45,660	402.9	109,450	390.0	109,040	402.4
55–64 years	16,370	1,034.4	16,310	1,048.0	79,110	1,025.9	82,240	1,079.3	187,230	1,010.3	190,940	1,042.5
65–74 years	33,810	2,436.7	35,540	2,534.6	169,740	2,506.0	180,480	2,620.9	402,420	2,449.6	412,060	2,479.0
75–84 years	52,540	5,860.9	51,220	5,865.4	261,650	6,011.9	261,120	6,122.3	591,340	5,649.0	589,300	5,766.7
85 years and over	45,350	15,343.7	43,760	15,290.0	240,700	16,789.5	232,620	16,650.4	533,390	15,451.6	517,870	15,463.4
Not stated	70	...	80	...	340	...	330	...	700	...	760	...
Age-adjusted rate <sup>3</sup>	...	454.2	...	476.2	...	470.7	...	489.6	...	458.1	...	472.8

See footnotes at end of table.

**Table 5. Provisional number of deaths and death rates, by age, race, and sex, and age-adjusted death rates by race and sex: United States, May 1996 and 1997, cumulative figures 1996 and 1997, and 12 months ending with May 1996 and 1997—Con.**

[Data are provisional, estimated from a 10-percent sample of deaths. Age-specific rates on an annual basis per 100,000 population in specified group; age-adjusted rates per 100,000 U.S. standard population; see [Technical notes](#). Because of rounding of estimates, figures may not add to totals. For method of computation and information on standard errors of the estimates, see [Technical notes](#)]

Age, race, and sex	May				January–May				12 months ending with May			
	1997		1996		1997		1996		1997		1996	
	Number	Rate	Number	Rate	Number	Rate	Number	Rate	Number	Rate	Number	Rate
<b>White male</b>												
All ages . . . . .	83,840	907.9	85,460	937.1	422,000	939.4	433,490	970.6	980,450	904.3	998,310	929.8
Under 1 year . . . . .	} 1,350	67.7	1,440	72.3	4,280	<sup>2</sup> 681.6	4,150	<sup>2</sup> 647.0	10,140	<sup>2</sup> 664.9	10,580	<sup>2</sup> 685.2
1–4 years . . . . .					850	32.5	1,090	41.9	2,050	32.7	2,590	40.9
5–14 years . . . . .					1,390	21.2	1,410	21.6	3,680	23.5	3,680	23.6
15–24 years . . . . .					1,140	89.4	1,470	118.3	6,260	100.8	6,920	113.4
25–34 years . . . . .	2,170	157.0	2,250	159.7	10,020	148.2	11,430	165.1	24,990	152.0	28,730	171.8
35–44 years . . . . .	3,350	215.1	4,300	281.8	18,070	238.7	20,770	278.3	45,220	247.8	50,950	284.7
45–54 years . . . . .	5,930	494.6	5,800	505.7	29,330	506.5	29,190	521.2	69,410	499.9	69,880	522.2
55–64 years . . . . .	10,170	1,333.7	9,780	1,306.2	48,460	1,304.3	49,390	1,347.8	114,420	1,282.0	115,360	1,309.7
65–74 years . . . . .	19,520	3,123.6	20,660	3,282.9	97,500	3,197.4	103,180	3,339.1	228,600	3,093.0	236,980	3,179.2
75–84 years . . . . .	25,430	7,152.8	25,270	7,361.2	126,900	7,361.0	129,280	7,722.7	289,270	6,988.9	291,770	7,290.6
85 years and over . . . . .	14,710	17,477.1	14,430	18,009.2	78,660	19,315.3	76,410	19,570.4	175,360	17,930.5	168,850	18,078.2
Not stated . . . . .	60	...	60	...	290	...	260	...	500	...	570	...
Age-adjusted rate <sup>3</sup> . . . . .	...	576.8	...	604.5	...	591.9	...	621.6	...	578.1	...	604.2
<b>White female</b>												
All ages . . . . .	85,090	892.5	84,800	896.3	436,940	941.8	436,400	941.6	996,050	889.3	988,730	887.3
Under 1 year . . . . .	} 950	50.2	1,090	57.6	3,090	<sup>2</sup> 517.5	3,660	<sup>2</sup> 603.4	7,520	<sup>2</sup> 518.6	8,500	<sup>2</sup> 580.6
1–4 years . . . . .					840	33.8	820	32.9	1,660	27.9	1,910	31.7
5–14 years . . . . .					1,140	18.3	1,090	17.8	2,690	18.1	2,570	17.4
15–24 years . . . . .					410	34.4	580	49.2	2,610	45.4	2,480	42.9
25–34 years . . . . .	720	53.3	1,030	74.5	3,870	58.6	4,340	63.7	9,710	60.4	10,500	64.0
35–44 years . . . . .	1,710	111.0	1,980	130.6	8,560	114.3	9,280	125.1	21,190	117.3	22,420	126.0
45–54 years . . . . .	3,050	249.2	3,410	290.1	17,100	289.2	16,470	287.0	40,040	282.4	39,160	285.5
55–64 years . . . . .	6,200	756.0	6,530	808.6	30,650	766.9	32,840	830.5	72,810	757.8	75,580	794.9
65–74 years . . . . .	14,300	1,875.2	14,870	1,924.0	72,240	1,940.1	77,300	2,035.9	173,820	1,923.4	175,090	1,909.8
75–84 years . . . . .	27,100	5,009.9	25,960	4,898.4	134,750	5,126.4	131,840	5,088.6	302,070	4,772.8	297,520	4,785.6
85 years and over . . . . .	30,640	14,494.2	29,330	14,232.8	162,040	15,787.4	156,210	15,517.7	358,030	14,471.7	349,030	14,452.6
Not stated . . . . .	10	...	20	...	50	...	70	...	200	...	190	...
Age-adjusted rate <sup>3</sup> . . . . .	...	350.1	...	369.4	...	369.0	...	380.1	...	357.1	...	362.8
<b>Black</b>												
All ages . . . . .	21,990	764.7	24,370	858.0	113,850	814.3	122,470	881.3	275,630	817.9	285,630	856.5
Under 1 year . . . . .	} 840	110.3	1,040	135.2	3,390	<sup>2</sup> 1,454.5	3,700	<sup>2</sup> 1,415.0	8,700	<sup>2</sup> 1,550.8	8,660	<sup>2</sup> 1,383.4
1–4 years . . . . .					510	51.6	720	71.4	1,420	60.0	1,590	64.5
5–14 years . . . . .					680	26.7	810	33.1	1,840	30.5	1,770	29.8
15–24 years . . . . .					610	129.5	590	127.4	3,120	136.3	3,420	151.0
25–34 years . . . . .	900	197.0	1,280	279.1	4,570	205.4	6,230	276.7	12,270	227.1	15,690	290.2
35–44 years . . . . .	1,790	388.8	2,180	486.8	9,100	407.1	10,760	491.7	22,460	417.8	26,210	500.1
45–54 years . . . . .	2,390	790.7	2,690	938.8	11,790	808.0	12,910	924.7	28,890	828.7	30,150	907.9
55–64 years . . . . .	3,160	1,695.0	3,510	1,926.6	16,850	1,863.2	16,890	1,895.9	39,080	1,799.3	39,070	1,824.8
65–74 years . . . . .	4,080	2,923.8	4,800	3,481.0	22,120	3,258.1	23,620	3,496.2	54,560	3,328.9	55,390	3,408.6
75–84 years . . . . .	4,810	6,577.7	4,930	6,929.3	23,820	6,708.4	25,690	7,380.2	57,070	6,674.9	58,240	6,966.5
85 years and over . . . . .	3,380	13,675.9	3,350	14,125.6	17,730	14,768.7	17,590	15,155.6	40,710	14,037.9	40,140	14,387.1
Not stated . . . . .	30	...	—	...	170	...	120	...	310	...	210	...
Age-adjusted rate <sup>3</sup> . . . . .	...	659.2	...	760.3	...	704.5	...	772.9	...	712.9	...	754.3
<b>Black male</b>												
All ages . . . . .	11,240	823.3	12,540	930.4	59,380	894.6	65,710	996.5	144,950	905.9	153,670	971.2
Under 1 year . . . . .	} 500	129.4	490	125.6	1,920	<sup>2</sup> 1,617.8	1,990	<sup>2</sup> 1,507.2	4,810	<sup>2</sup> 1,693.7	4,610	<sup>2</sup> 1,454.3
1–4 years . . . . .					300	61.0	370	71.4	770	64.2	800	64.0
5–14 years . . . . .					390	30.7	460	37.4	1,080	35.2	1,090	36.2
15–24 years . . . . .					500	211.6	400	172.5	2,380	209.0	2,750	241.9
25–34 years . . . . .	550	253.9	840	386.8	3,070	290.3	4,180	392.8	8,360	326.4	10,680	417.2
35–44 years . . . . .	1,100	510.3	1,290	616.9	5,870	562.0	6,980	682.2	14,630	581.7	17,240	704.8
45–54 years . . . . .	1,520	1,109.5	1,680	1,293.9	7,310	1,103.8	8,190	1,294.5	17,930	1,134.8	18,910	1,256.5
55–64 years . . . . .	1,910	2,362.3	2,070	2,613.8	9,540	2,428.0	10,070	2,598.9	22,430	2,381.1	22,900	2,459.7
65–74 years . . . . .	2,030	3,474.1	2,490	4,323.2	11,910	4,198.3	12,770	4,530.4	29,280	4,274.5	30,180	4,451.3
75–84 years . . . . .	2,010	7,465.7	2,150	8,241.5	10,530	8,060.9	12,120	9,509.3	25,400	8,063.5	26,870	8,781.0
85 years and over . . . . .	1,090	15,098.7	1,140	16,616.5	6,070	17,233.3	5,760	17,230.2	13,560	15,952.9	13,470	16,629.6
Not stated . . . . .	30	...	—	...	90	...	70	...	180	...	110	...
Age-adjusted rate <sup>3</sup> . . . . .	...	842.1	...	969.0	...	912.8	...	1,029.5	...	928.4	...	1,002.6

See footnotes at end of table.

**Table 5. Provisional number of deaths and death rates, by age, race, and sex, and age-adjusted death rates by race and sex: United States, May 1996 and 1997, cumulative figures 1996 and 1997, and 12 months ending with May 1996 and 1997—Con.**

[Data are provisional, estimated from a 10-percent sample of deaths. Age-specific rates on an annual basis per 100,000 population in specified group; age-adjusted rates per 100,000 U.S. standard population; see [Technical notes](#). Because of rounding of estimates, figures may not add to totals. For method of computation and information on standard errors of the estimates, see [Technical notes](#)]

Age, race, and sex	May				January–May				12 months ending with May							
	1997		1996		1997		1996		1997		1996					
	Number	Rate	Number	Rate	Number	Rate	Number	Rate	Number	Rate	Number	Rate				
Black female																
All ages . . . . .	10,750	711.8	11,830	792.5	54,470	741.7	56,760	777.3	130,680	738.3	131,950	752.8				
Under 1 year . . . . .	} 340	90.7	550	145.1	1,470	<sup>2</sup> 1,278.2	1,700	<sup>2</sup> 1,328.3	3,890	<sup>2</sup> 1,404.3	4,050	<sup>2</sup> 1,310.7				
1–4 years . . . . .					200	41.8	360	71.4	650	55.7	790	64.9				
5–14 years . . . . .					290	23.5	350	28.7	750	25.2	680	23.3				
15–24 years . . . . .					110	46.9	200	86.4	730	63.1	680	60.8	1,810	65.8	1,700	62.2
25–34 years . . . . .					350	145.7	440	182.2	1,500	128.8	2,040	172.3	3,910	137.5	5,010	176.0
35–44 years . . . . .	690	281.8	890	372.9	3,230	271.6	3,790	324.8	7,830	273.7	8,970	320.9				
45–54 years . . . . .	880	532.4	1,010	644.6	4,490	562.8	4,720	618.2	10,960	575.0	11,230	618.4				
55–64 years . . . . .	1,240	1,174.6	1,440	1,398.1	7,310	1,426.4	6,830	1,355.4	16,660	1,354.5	16,170	1,336.4				
65–74 years . . . . .	2,060	2,539.8	2,310	2,876.9	10,210	2,584.9	10,850	2,753.3	25,280	2,649.9	25,200	2,661.0				
75–84 years . . . . .	2,800	6,060.2	2,780	6,169.5	13,290	5,920.5	13,570	6,148.7	31,670	5,864.8	31,380	5,920.8				
85 years and over . . . . .	2,290	13,088.8	2,220	13,171.0	11,670	13,747.3	11,830	14,314.3	27,140	13,239.0	26,670	13,469.7				
Not stated . . . . .	—	...	—	...	80	...	50	...	130	...	100	...				
Age-adjusted rate <sup>3</sup> . . . . .	...	514.7	...	600.3	...	543.0	...	575.1	...	544.8	...	561.5				

... Category not applicable.

— Quantity zero.

<sup>1</sup>Includes races other than white and black.

<sup>2</sup>Death rates under 1 year (based on population estimates) differ from infant mortality rates (based on live births); see [table 9](#) for infant mortality rates.

<sup>3</sup>For method of computation, see [Technical notes](#).

NOTES: Figures include all revisions received from the States. Cumulative and 12-month figures for the current year reflect revisions received for previous months, and figures for earlier years may differ from those previously published. Data include adjustments for Utah, which is not included in the sample for May 1997.

**Table 6. Provisional number of deaths and death rates for 72 selected causes, Human immunodeficiency virus infection, and Alzheimer's disease: United States, May 1996 and 1997, cumulative figures 1996 and 1997, and 12 months ending with May 1996 and 1997**

[Data are provisional, estimated from a 10-percent sample of deaths. Rates on an annual basis per 100,000 estimated population. Because of rounding of estimates, figures may not add to totals. For method of computation and information on standard errors of the estimates, see [Technical notes](#). For explanation of asterisks preceding cause-of-death categories, see [Technical notes](#)]

Cause of death (Based on the <i>Ninth Revision, International Classification of Diseases, 1975</i> )	May		May		January–May		January–May		12 months ending with May		12 months ending with May	
	1997		1996		1997		1996		1997		1996	
	Number	Rate	Number	Rate	Number	Rate	Number	Rate	Number	Rate	Number	Rate
All causes . . . . .	195,000	857.4	198,000	883.9	990,000	896.9	1,009,000	918.7	2,293,000	860.8	2,312,000	876.5
Shigellosis and amebiasis . . . . .	—	*	—	*	—	*	—	*	—	*	—	*
Certain other intestinal infections . . . . .	70	*	20	*	350	0.3	360	0.3	810	0.3	750	0.3
Tuberculosis . . . . .	100	*	60	*	500	0.4	440	0.4	1,060	0.4	1,140	0.4
Tuberculosis of respiratory system . . . . .	60	*	60	*	400	0.3	360	0.3	840	0.3	930	0.4
Other tuberculosis . . . . .	40	*	—	*	100	*	90	*	220	0.1	210	0.1
Whooping cough . . . . .	—	*	—	*	10	*	10	*	10	*	20	*
Streptococcal sore throat, scarlatina, and erysipelas . . . . .	—	*	—	*	—	*	—	*	—	*	—	*
Meningococcal infection . . . . .	10	*	20	*	180	0.2	130	0.1	320	0.1	250	0.1
Septicemia . . . . .	1,620	7.1	1,920	8.6	9,560	8.6	9,660	8.8	21,560	8.1	21,260	8.1
Acute poliomyelitis . . . . .	—	*	—	*	—	*	—	*	—	*	—	*
Measles . . . . .	—	*	—	*	10	*	—	*	10	*	—	*
Viral hepatitis . . . . .	230	1.0	340	1.5	1,600	1.4	1,520	1.4	3,900	1.5	3,600	1.4
Syphilis . . . . .	10	*	—	*	40	*	—	*	70	*	50	*
All other infectious and parasitic diseases <sup>1</sup> . . . . .	1,590	7.0	3,520	15.7	10,010	9.1	18,090	16.5	29,870	11.2	46,200	17.5
Malignant neoplasms, including neoplasms of lymphatic and hematopoietic tissues . . . . .	44,610	196.6	46,220	206.1	218,670	198.1	227,420	207.1	533,580	200.4	539,670	204.5
Malignant neoplasms of lip, oral cavity, and pharynx . . . . .	510	2.2	590	2.6	3,140	2.8	3,270	3.0	7,710	2.9	7,770	2.9
Malignant neoplasms of digestive organs and peritoneum . . . . .	10,900	48.0	10,960	48.9	51,380	46.5	53,040	48.3	125,190	47.0	126,400	47.9
Malignant neoplasms of respiratory and intrathoracic organs . . . . .	12,880	56.8	13,690	61.0	64,510	58.4	67,070	61.1	156,500	58.8	157,400	59.7
Malignant neoplasm of breast . . . . .	3,180	14.0	3,780	16.8	16,610	15.1	18,360	16.7	41,790	15.7	43,960	16.7
Malignant neoplasms of genital organs . . . . .	4,870	21.5	5,410	24.1	24,220	21.9	25,140	22.9	59,310	22.3	60,430	22.9
Malignant neoplasms of urinary organs . . . . .	2,020	8.9	1,910	8.5	10,030	9.1	9,800	8.9	23,250	8.7	22,820	8.6
Malignant neoplasms of all other and unspecified sites . . . . .	5,320	23.4	5,350	23.8	25,750	23.3	27,540	25.1	64,460	24.2	65,820	24.9
Leukemia . . . . .	1,730	7.6	1,640	7.3	8,370	7.6	8,720	7.9	19,990	7.5	20,100	7.6
Other malignant neoplasms of lymphatic and hematopoietic tissues . . . . .	3,210	14.1	2,910	13.0	14,650	13.3	14,490	13.2	35,370	13.3	34,970	13.3
Benign neoplasms, carcinoma in situ, and neoplasms of uncertain behavior and of unspecified nature . . . . .	740	3.2	690	3.1	3,230	2.9	3,380	3.1	7,500	2.8	7,840	3.0
Diabetes mellitus . . . . .	5,020	22.1	5,250	23.4	25,910	23.5	26,450	24.1	60,930	22.9	58,860	22.3
Nutritional deficiencies . . . . .	270	1.2	260	1.2	1,550	1.4	1,740	1.6	3,610	1.4	3,910	1.5
Anemias . . . . .	290	1.3	280	1.2	1,860	1.7	1,600	1.4	4,230	1.6	3,990	1.5
Meningitis . . . . .	70	*	70	*	290	0.3	320	0.3	560	0.2	680	0.3
Major cardiovascular diseases . . . . .	80,180	353.3	81,990	365.6	409,070	370.6	416,250	379.1	934,460	350.9	941,960	357.0
Diseases of heart . . . . .	61,780	272.3	62,980	280.9	314,180	284.6	323,040	294.2	720,270	270.5	730,340	276.8
Rheumatic fever and rheumatic heart disease . . . . .	460	2.0	390	1.7	2,070	1.9	2,290	2.1	4,640	1.7	4,970	1.9
Hypertensive heart disease . . . . .	2,100	9.2	2,340	10.4	11,140	10.1	11,360	10.3	25,800	9.7	25,420	9.6
Hypertensive heart and renal disease . . . . .	170	0.7	150	0.7	970	0.9	970	0.9	2,210	0.8	2,140	0.8
Ischemic heart disease . . . . .	39,740	175.1	41,100	183.3	202,810	183.7	208,820	190.2	467,000	175.4	473,960	179.6
Acute myocardial infarction . . . . .	18,110	79.8	18,720	83.5	90,880	82.3	94,850	86.4	209,920	78.8	215,290	81.6
Other acute and subacute forms of ischemic heart disease . . . . .	270	1.2	260	1.2	1,310	1.2	1,130	1.0	2,880	1.1	2,580	1.0
Angina pectoris . . . . .	60	*	80	*	270	0.2	320	0.3	640	0.2	740	0.3
Old myocardial infarction and other forms of chronic ischemic heart disease . . . . .	21,290	93.8	22,040	98.3	110,340	100.0	112,520	102.5	253,570	95.2	255,350	96.8
Other diseases of endocardium . . . . .	1,690	7.4	1,390	6.2	7,270	6.6	7,300	6.7	16,450	6.2	15,970	6.1
All other forms of heart disease . . . . .	17,620	77.6	17,620	78.6	89,930	81.5	92,320	84.1	204,180	76.7	207,870	78.8
Hypertension with or without renal disease . . . . .	1,090	4.8	1,070	4.8	5,730	5.2	5,450	5.0	12,470	4.7	12,390	4.7
Cerebrovascular diseases . . . . .	13,430	59.2	14,480	64.6	69,820	63.2	69,850	63.6	158,520	59.5	157,790	59.8
Intracerebral and other intracranial hemorrhage . . . . .	2,090	9.2	2,040	9.1	10,680	9.7	10,060	9.2	24,120	9.1	22,330	8.5
Cerebral thrombosis and unspecified occlusion of cerebral arteries . . . . .	960	4.2	1,080	4.8	5,300	4.8	5,370	4.9	12,390	4.7	12,610	4.8
Cerebral embolism . . . . .	20	*	70	*	200	0.2	290	0.3	710	0.3	700	0.3
All other and late effects of cerebrovascular diseases . . . . .	10,370	45.7	11,280	50.3	53,640	48.6	54,140	49.3	121,290	45.5	122,150	46.3

**Table 6. Provisional number of deaths and death rates for 72 selected causes, Human immunodeficiency virus infection, and Alzheimer's disease: United States, May 1996 and 1997, cumulative figures 1996 and 1997, and 12 months ending with May 1996 and 1997—Con.**

[Data are provisional, estimated from a 10-percent sample of deaths. Rates on an annual basis per 100,000 estimated population. Because of rounding of estimates, figures may not add to totals. For method of computation and information on standard errors of the estimates, see [Technical notes](#). For explanation of asterisks preceding cause-of-death categories, see [Technical notes](#)]

Cause of death (Based on the <i>Ninth Revision, International Classification of Diseases, 1975</i> )	May		May		January–May		January–May		12 months ending with May		12 months ending with May		
	1997		1996		1997		1996		1997		1996		
	Number	Rate	Number	Rate	Number	Rate	Number	Rate	Number	Rate	Number	Rate	
Major cardiovascular diseases—Con.													
Atherosclerosis . . . . .	440	1,380	6.1	1,270	5.7	7,280	6.6	6,820	6.2	16,030	6.0	15,750	6.0
Other diseases of arteries, arterioles, and capillaries . . . . .	.441–448	2,490	11.0	2,190	9.8	12,070	10.9	11,080	10.1	27,170	10.2	25,700	9.7
Acute bronchitis and bronchiolitis . . . . .	.466	50	*	50	*	340	0.3	250	0.2	500	0.2	460	0.2
Pneumonia and influenza . . . . .	.480–487	6,840	30.1	6,770	30.2	42,110	38.2	39,410	35.9	84,250	31.6	79,840	30.3
Pneumonia . . . . .	.480–486	6,820	30.0	6,760	30.1	41,370	37.5	38,960	35.5	83,300	31.3	79,300	30.1
Influenza . . . . .	.487	20	*	10	*	740	0.7	450	0.4	950	0.4	530	0.2
Chronic obstructive pulmonary diseases and allied conditions . . . . .	.490–496	9,890	43.6	9,240	41.2	50,430	45.7	49,330	44.9	106,570	40.0	103,870	39.4
Bronchitis, chronic and unspecified . . . . .	.490–491	240	1.0	210	0.9	1,560	1.4	1,640	1.5	2,870	1.1	3,120	1.2
Emphysema . . . . .	.492	1,510	6.7	1,580	7.0	8,470	7.7	8,130	7.4	17,140	6.4	17,040	6.5
Asthma . . . . .	.493	450	2.0	400	1.8	2,510	2.3	2,070	1.9	5,600	2.1	5,000	1.9
Other chronic obstructive pulmonary diseases and allied conditions . . . . .	.494–496	7,690	33.9	7,050	31.4	37,880	34.3	37,490	34.1	80,960	30.4	78,700	29.8
Ulcer of stomach and duodenum . . . . .	.531–533	490	2.2	490	2.2	2,240	2.0	2,360	2.1	4,660	1.7	5,560	2.1
Appendicitis . . . . .	.540–543	30	*	50	*	120	0.1	200	0.2	390	0.1	410	0.2
Hernia of abdominal cavity and intestinal obstruction without mention of hernia . . . . .	.550–553,560	610	2.7	440	2.0	2,650	2.4	2,720	2.5	6,380	2.4	5,940	2.3
Chronic liver disease and cirrhosis . . . . .	.571	2,050	9.0	1,950	8.7	10,260	9.3	10,360	9.4	24,350	9.1	24,550	9.3
Cholelithiasis and other disorders of gallbladder . . . . .	.574–575	250	1.1	270	1.2	1,190	1.1	1,080	1.0	2,790	1.0	2,580	1.0
Nephritis and nephrotic syndrome, and nephrosis . . . . .	.580–589	2,320	10.2	2,300	10.2	11,390	10.3	11,840	10.8	26,530	10.0	25,970	9.8
Acute glomerulonephritis and nephrotic syndrome . . . . .	.580–581	30	*	10	*	100	*	90	*	230	0.1	250	0.1
Chronic glomerulonephritis, nephritis and nephropathy, not specified as acute or chronic, and renal sclerosis, unspecified . . . . .	.582–583,587	90	*	170	0.8	700	0.6	740	0.7	1,760	0.7	1,550	0.6
Renal failure, disorders resulting from impaired renal function, and small kidney of unknown cause . . . . .	.584–586,588–589	2,200	9.7	2,130	9.5	10,590	9.6	11,010	10.0	24,540	9.2	24,180	9.2
Infections of kidney . . . . .	.590	80	*	80	*	310	0.3	440	0.4	770	0.3	870	0.3
Hyperplasia of prostate . . . . .	.600	30	*	50	*	230	0.2	220	0.2	420	0.2	470	0.2
Complications of pregnancy, childbirth, and the puerperium . . . . .	.630–676	–	*	30	*	80	*	140	0.1	220	0.1	370	0.1
Pregnancy with abortive outcome . . . . .	.630–638	–	*	–	*	20	*	10	*	30	*	30	*
Other complications of pregnancy, childbirth, and the puerperium . . . . .	.640–676	–	*	30	*	60	*	130	0.1	190	0.1	340	0.1
Congenital anomalies . . . . .	.740–759	1,020	4.5	1,040	4.6	4,850	4.4	4,810	4.4	11,520	4.3	11,550	4.4
Certain conditions originating in the perinatal period . . . . .	.760–779	1,050	4.6	1,140	5.1	4,900	4.4	5,330	4.9	12,470	4.7	13,240	5.0
Birth trauma, intrauterine hypoxia, birth asphyxia, and respiratory distress syndrome . . . . .	.767–769	230	1.0	160	0.7	850	0.8	820	0.7	2,180	0.8	2,060	0.8
Other conditions originating in the perinatal period . . . . .	.760–766,770–779	830	3.6	980	4.4	4,050	3.7	4,510	4.1	10,290	3.9	11,170	4.2
Symptoms, signs, and ill-defined conditions . . . . .	.780–799	3,930	17.3	3,430	15.3	19,260	17.5	17,910	16.3	43,120	16.2	42,310	16.0
All other diseases . . . . .	.Residual	19,710	86.9	17,890	79.8	101,960	92.4	96,490	87.9	224,510	84.3	217,190	82.3
Accidents and adverse effects . . . . .	E800–E949	7,630	33.6	7,610	33.9	34,980	31.7	36,510	33.2	89,230	33.5	91,630	34.7
Motor vehicle accidents . . . . .	E810–E825	3,650	16.1	3,770	16.8	16,510	14.9	17,260	15.7	42,940	16.1	44,830	17.0
All other accidents and adverse effects . . . . .	E800–E807,E826–E949	3,980	17.5	3,840	17.1	18,480	16.7	19,250	17.5	46,290	17.4	46,790	17.7
Suicide . . . . .	E950–E959	2,140	9.4	2,870	12.8	11,540	10.5	12,130	11.0	29,580	11.1	29,280	11.1
Homicide and legal intervention . . . . .	E960–E978	1,440	6.3	1,640	7.3	7,430	6.7	8,750	8.0	19,560	7.3	21,950	8.3
All other external causes . . . . .	E980–E999	190	0.8	210	0.9	880	0.8	1,000	0.9	2,200	0.8	2,460	0.9
Human immunodeficiency virus infection <sup>2</sup> . . . . .	*042–*044	1,130	5.0	2,920	13.0	7,570	6.9	15,560	14.2	23,250	8.7	39,990	15.2
Alzheimer's disease . . . . .	.331.0	1,800	7.9	1,740	7.8	10,510	9.5	9,780	8.9	22,650	8.5	21,340	8.1

– Quantity zero. \* Figure does not meet standards of reliability or precision; see [Technical notes](#).  
<sup>1</sup>Includes data for deaths due to Human immunodeficiency virus infection (categories \*042–\*044) shown separately below; see [Technical notes](#).  
<sup>2</sup>Included in All other infectious and parasitic diseases shown above.

NOTES: Figures include all revisions received from the States Cumulative and 12-month figures for the current year reflect revisions received for previous months, and figures for earlier years may differ from those previously published. Data include adjustments for Utah, which is not included in the sample for May 1997.

**Table 7. Provisional number of deaths and death rates for 16 selected subcategories of Malignant neoplasms, including neoplasms of lymphatic and hematopoietic tissues: United States, May 1996 and 1997, cumulative figures 1996 and 1997, and 12 months ending with May 1996 and 1997**

[Data are provisional, estimated from a 10-percent sample of deaths. Rates on an annual basis per 100,000 estimated population. Because of rounding of estimates, figures may not add to totals. For method of computation and information on standard errors of the estimates, see [Technical notes](#)]

Cause of death (Based on the <i>Ninth Revision, International Classification of Diseases, 1975</i> )	May				January–May				12 months ending with May				
	1997		1996		1997		1996		1997		1996		
	Number	Rate	Number	Rate	Number	Rate	Number	Rate	Number	Rate	Number	Rate	
Malignant neoplasms, including neoplasms of lymphatic and hematopoietic tissues <sup>1</sup> . . . . .	140–208	44,610	196.6	46,220	206.1	218,670	198.1	227,420	207.1	533,580	200.4	539,670	204.5
Malignant neoplasm of esophagus . . . . .	150	950	4.2	970	4.3	4,510	4.1	4,730	4.3	10,920	4.1	10,700	4.1
Malignant neoplasm of stomach . . . . .	151	1,120	4.9	1,210	5.4	5,190	4.7	5,400	4.9	13,180	4.9	13,390	5.1
Malignant neoplasms of colon, rectum, rectosigmoid junction, and anus . . . . .	153,154	4,940	21.8	4,740	21.1	22,860	20.7	23,840	21.7	56,270	21.1	56,270	21.3
Malignant neoplasm of pancreas . . . . .	157	2,270	10.0	2,730	12.2	11,200	10.1	11,740	10.7	27,050	10.2	27,820	10.5
Malignant neoplasms of trachea, bronchus, and lung . . . . .	162	12,480	55.0	13,240	59.0	62,570	56.7	64,880	59.1	151,440	56.9	152,220	57.7
Malignant melanoma of skin . . . . .	172	510	2.2	660	2.9	2,920	2.6	2,700	2.5	7,250	2.7	6,680	2.5
Malignant neoplasm of cervix uteri . . . . .	180	390	1.7	370	1.6	1,830	1.7	1,780	1.6	4,530	1.7	4,810	1.8
Malignant neoplasms of body of uterus and of uterus, part unspecified . . . . .	179,182	490	2.2	580	2.6	2,420	2.2	2,480	2.3	5,720	2.1	6,180	2.3
Malignant neoplasm of ovary . . . . .	183.0	920	4.1	1,240	5.5	5,720	5.2	5,560	5.1	13,650	5.1	13,260	5.0
Malignant neoplasm of prostate . . . . .	185	2,930	12.9	3,070	13.7	13,610	12.3	14,550	13.3	33,550	12.6	34,420	13.0
Malignant neoplasm of bladder . . . . .	188	890	3.9	920	4.1	4,900	4.4	4,940	4.5	11,220	4.2	11,280	4.3
Malignant neoplasms of kidney and other and unspecified urinary organs . . . . .	189	1,130	5.0	990	4.4	5,130	4.7	4,860	4.4	12,040	4.5	11,540	4.4
Malignant neoplasms of brain and other and unspecified parts of nervous system . . . . .	191,192	920	4.1	870	3.9	4,390	4.0	4,940	4.5	11,050	4.1	11,870	4.5
Hodgkin's disease . . . . .	201	140	0.6	70	*	580	0.5	690	0.6	1,350	0.5	1,550	0.6
Malignant lymphoma other than Hodgkin's disease . . . . .	200,202	2,220	9.8	1,920	8.6	9,840	8.9	9,250	8.4	23,770	8.9	22,790	8.6
Multiple myeloma and other immunoproliferative neoplasms . . . . .	203	850	3.7	920	4.1	4,230	3.8	4,550	4.1	10,240	3.8	10,630	4.0

\* Figure does not meet standards of reliability or precision; see [Technical notes](#).

<sup>1</sup>Includes figures for subcategories not shown below.

NOTES: Figures include all revisions received from the States. Cumulative and 12-month figures for the current year reflect revisions received for previous months, and figures for earlier years may differ from those previously published. Data include adjustments for Utah, which is not included in the sample for May 1997.

**Table 8. Provisional number of deaths and death rates for firearm mortality: United States, May 1996 and 1997, cumulative figures 1996 and 1997, and 12 months ending with May 1996 and 1997**

[Data are provisional, estimated from a 10-percent sample of deaths. Rates on an annual basis per 100,000 estimated population. Because of rounding of estimates, figures may not add to totals. For method of computation and information on standard errors of the estimates, see [Technical notes](#)]

Cause of death (Based on the <i>Ninth Revision International Classification of Diseases, 1975</i> )	May				January–May				12 months ending with May				
	1997		1996		1997		1996		1997		1996		
	Number	Rate	Number	Rate	Number	Rate	Number	Rate	Number	Rate	Number	Rate	
Injury by firearms . . . . .	E922,E955.0–E955.4,E965.0–965.4,E970,E985.0–E985.4	2,400	10.6	3,080	13.7	12,880	11.7	14,500	13.2	32,840	12.3	35,210	13.3
Accident caused by firearm missile . . . . .	E922	90	*	90	*	440	0.4	530	0.5	1,250	0.5	1,360	0.5
Suicide by firearms . . . . .	E955.0–E955.4	1,270	5.6	1,800	8.0	6,930	6.3	7,720	7.0	17,550	6.6	18,010	6.8
Homicide and legal intervention by firearms . . . . .	E965.0–E965.4,E970	1,000	4.4	1,170	5.2	5,420	4.9	6,150	5.6	13,850	5.2	15,600	5.9
Injury by firearms, undetermined whether accidentally or purposely inflicted . . . . .	E985.0–E985.4	40	*	20	*	90	*	110	0.1	190	0.1	240	0.1

\* Figure does not meet standards of reliability or precision; see [Technical notes](#).

NOTES: Figures include all revisions received from the States. Cumulative and 12-month figures for the current year reflect revisions received for previous months, and figures for earlier years may differ from those previously published. Data include adjustments for Utah, which is not included in the sample for May 1997.



**Table 9. Provisional number of deaths under 1 year and infant mortality rates, by age and for 10 selected causes: United States, May 1996 and 1997, cumulative figures 1996 and 1997, and 12 months ending with May 1996 and 1997**

[Data are provisional, estimated from a 10-percent sample of deaths. Rates on an annual basis per 100,000 live births. Because of rounding of estimates, figures may not add to totals. For method of computation and information on standard errors of the estimates, see [Technical notes](#)]

Age and cause of death (Based on the <i>Ninth Revision International Classification of Diseases, 1975</i> )	May				January–May				12 months ending with May			
	1997		1996		1997		1996		1997		1996	
	Number	Rate	Number	Rate	Number	Rate	Number	Rate	Number	Rate	Number	Rate
Total, under 1 year . . . . .	2,200	704.8	2,400	731.7	11,100	706.8	11,900	746.1	27,300	708.2	28,600	741.7
Under 28 days . . . . .	1,440	452.9	1,640	494.0	6,740	430.7	7,530	473.8	17,680	458.9	18,400	477.5
28 days–11 months . . . . .	800	251.6	790	238.0	4,320	276.1	4,330	272.4	9,600	249.2	10,160	263.7
Certain gastrointestinal diseases . . . . .	10	*	–	*	70	*	80	*	210	5.5	170	4.4
Pneumonia and influenza . . . . .	–	*	10	*	110	7.0	170	10.7	260	6.7	340	8.8
Congenital anomalies . . . . .	460	144.7	620	186.8	2,530	161.7	2,670	168.0	6,380	165.6	6,080	157.8
Disorders relating to short gestation and unspecified low birthweight . . . . .	220	69.2	440	132.5	1,230	78.6	1,620	101.9	3,170	82.3	3,580	92.9
Birth trauma . . . . .	–	*	–	*	30	*	90	*	110	2.9	230	6.0
Intrauterine hypoxia and birth asphyxia . . . . .	70	*	60	*	200	12.8	240	15.1	480	12.5	530	13.8
Respiratory distress syndrome . . . . .	150	47.2	100	*	550	35.1	470	29.6	1,480	38.4	1,230	31.9
Other conditions originating in the perinatal period . . . . .	610	191.8	530	159.7	2,770	177.0	2,850	179.3	7,020	182.2	7,510	194.9
Sudden infant death syndrome . . . . .	230	72.3	250	75.3	860	55.0	1,280	80.5	2,190	56.8	2,790	72.4
All other causes . . . . .	500	157.3	410	123.5	2,730	174.5	2,390	150.4	6,000	155.7	6,110	158.6

\* Figure does not meet standards of reliability or precision; see [Technical notes](#).  
– Quantity zero.

NOTES: Figures include all revisions received from the States. Cumulative and 12-month figures for the current year reflect revisions received for previous months, and figures for earlier years may differ from those previously published. Data include adjustments for Utah, which is not included in the sample for May 1997.

## Technical notes

### Nature and sources of data

Data in this report are provisional unless otherwise specified and include only events occurring within the United States (50 States and the District of Columbia). Mortality data exclude fetal deaths. Data for the Commonwealth of Puerto Rico are not included in the U.S. totals.

Birth, death, and infant death figures in [tables 2](#) and [4](#) for each State are estimates by State of residence. These estimates are derived by applying adjustment ratios to the actual counts of certificates for all events occurring in the State and received in registration offices during a 1-month period regardless of date of the event. The adjustment ratios for each data year represent the observed relationship between final State occurrence figures and final State residence figures for the three most recent years for which final data were available and are expressed as a single ratio for each State. As in previous years, monthly State marriage and divorce figures represent the actual count of all events occurring in the State (State of occurrence) that were received in the registration offices during the 1-month period. Delay in the receipt of certificates in a registration office may result in a low State figure for a given month followed by a high figure for the month(s) in which the delayed records are received. Data for previous months and cumulative data include revised figures received from the States.

Figures for births, deaths, and infant deaths for California in [tables 2](#) and [4](#) contain adjustments for varying lengths of State reporting periods. Figures for Texas for all events shown in [tables 2–4](#) also are adjusted for varying lengths of State reporting periods. The figures for both States are adjusted by the ratio between the number of days in the data month and the number of days in the State reporting period. The adjusted figures are included in the U.S. totals shown elsewhere in this report.

U.S. totals for births, deaths, and infant deaths are based on the State estimates by State of residence and, therefore, in effect, exclude events to nonresidents of the United States. Events to nonresidents of the United States are included in all

marriage and divorce figures. The effect of excluding events to nonresidents from the U.S. totals is small.

Provisional totals for the United States include estimates for State data shown as not available. Provisional totals for births and marriages for the entire United States include adjustments for observed differences between provisional and final monthly figures.

Divorce figures include reported annulments. The monthly national divorce estimate is obtained by multiplying the total for the reporting areas by the ratio observed between the most recent final annual divorce total for the United States and the provisional total for the reporting areas combined.

*Random variation*—Although the counts in this report are not subject to sampling variability (except the Current Mortality Sample), they may be affected by random variation. When the number of events is small and the probability of such an event is small, considerable caution must be observed in interpreting the data. Such infrequent events may be assumed to follow a Poisson probability distribution. For this distribution a simple approximation may be used to estimate the random variation as follows:

If  $N$  is the number of events in the population and  $R$  is the corresponding rate, the chances are 19 in 20 that

$$1. N - 2\sqrt{N} \text{ and } N + 2\sqrt{N}$$

covers the “true” number of events.

$$2. R - 2 \frac{R}{\sqrt{N}} \text{ and } R + 2 \frac{R}{\sqrt{N}}$$

covers the “true” rate.

If the rate  $R_1$  corresponding to  $N_1$  events is compared with the rate  $R_2$  corresponding to  $N_2$  events, the difference between the two rates may be regarded as statistically significant at the 0.05 level if it exceeds

$$2 \sqrt{\frac{R_1^2}{N_1} + \frac{R_2^2}{N_2}}$$

Additional information on random variation in numbers of events, rates, and ratios may be found in the technical appendixes of *Vital Statistics of the United States, 1992, Volumes I and II*.

### Rates

Rates are on an annual basis and, except for infant mortality rates, are per 1,000 or 100,000 estimated population residing in the United States. The populations used for computing these rates are furnished by the U.S. Bureau of the Census. Rates shown in this report beginning with 1992 were computed using populations based on the 1990 Census enumeration comparable to those used for final data. Monthly rates are based on populations estimated for the specific month. Year-to-date rates are averages of monthly rates that have been weighted by the number of days in the corresponding months. Rates for 12-month periods are the sum of events for the period per population estimated at the midpoint of the period.

Infant mortality rates are deaths under 1 year of age for the specified period (monthly, year-to-date, or 12-month period) per 1,000 or 100,000 live births. Births used for computing monthly and year-to-date infant mortality rates are adjusted for monthly variation in the number of births. Births used to compute 12-month rates do not contain this adjustment. Births used for computing infant mortality rates are not corrected for observed differences between provisional and final monthly figures as described earlier in “[Nature and sources of data.](#)” Because monthly infant mortality rates are based on relatively few events, they are highly variable. Therefore, comparisons of monthly infant mortality rates should be interpreted cautiously; see “[Random variation.](#)”

Age-adjusted death rates are used to compare relative mortality risks across groups and over time. However, they should be viewed as constructs or indexes rather than as direct or actual measures of mortality risk. Statistically, they are weighted averages of the age-specific death rates, where the weights represent the fixed population proportions by age. See chapter 5 of an earlier report (1). The age-adjusted death rates presented in this report were computed by the direct method, that is, by applying age-specific death rates to the U.S. standard million population (2). See also chapter 10 of an earlier report (1). Age groups in [table 5](#) were used to compute the age-adjusted

rates shown in that table. It is important not to compare age-adjusted rates with crude rates.

### Current Mortality Sample

The Current Mortality Sample (CMS) is a 10-percent systematic sample of death certificates drawn each month after the certificates are counted in the State registration offices. Deaths and death rates for the United States by age, race, sex, and cause are estimated based on the sample. Because of the additional time required to select and process the certificates, data based on the CMS are published 1 month after publication of the U.S. and State counts. Complete information concerning the underlying cause of death sometimes is not available when the sample is drawn. As a result estimates based on sample counts for certain causes are biased. Correction for bias is not made in this report.

Estimated numbers of deaths based on the sample were proportionately adjusted to be consistent with estimates based on the count of death certificates received in State registration offices.

*HIV infection*—Beginning with data for 1987, the National Center for Health Statistics introduced categories \*042–\*044 for classifying and coding Human immunodeficiency virus (HIV) infection. The asterisks before the categories indicate that these codes are not part of the

*Ninth Revision, International Classification of Diseases*. Deaths classified to these categories are included in All other infectious and parasitic diseases in the List of 72 Selected Causes of Death and are also shown separately at the bottom of table 6.

*Sampling variability*—Because the estimates of deaths and death rates presented in this report with the exception of total deaths and deaths under 1 year are based on a sample of death certificates, they are subject to sampling variability. The estimated relative standard error in the following table is a measure of the

**Relative standard errors for estimated numbers of deaths from the Current Mortality Sample expressed as a percent of the estimate**

Estimated number of deaths	Relative standard error of estimate (as percent)	
	170,000 estimated deaths each month	2,000,000 estimated deaths each year
10 . . . . .	94.9	94.9
20 . . . . .	67.1	67.1
50 . . . . .	42.4	42.4
100 . . . . .	30.0	30.0
200 . . . . .	21.2	21.2
500 . . . . .	13.4	13.4
1,000 . . . . .	9.5	9.5
2,000 . . . . .	6.7	6.7
5,000 . . . . .	4.2	4.2
10,000 . . . . .	2.9	3.0
20,000 . . . . .	2.0	2.1
50,000 . . . . .	1.1	1.3
100,000 . . . . .	0.6	0.9
200,000 . . . . .	...	0.6
500,000 . . . . .	...	0.4
1,000,000 . . . . .	...	0.2

sampling error of the estimated number of deaths (or of the estimated death rate) expressed as a percent of the estimate. The first column refers to monthly estimates; the second to annual; cumulative year-to-date totals fall between the two.

The chances are about 2 in 3 that the percent difference between an estimate and the result of a complete count is less than the percent shown. The chances are about 19 in 20 that the percent difference is less than twice the percent shown. A figure based on 100 or fewer estimated deaths has a relative standard error of 30 percent or more and is, therefore, considered unreliable. A rate based on 100 or fewer estimated deaths has been replaced by an asterisk.

Unless otherwise specified comparisons made in the text between death rates based on the CMS were statistically significant at the 0.05 level of significance. Lack of comment in the text about any two rates does not mean that the difference was tested and found not to be significant at this level.

### References

1. Feinleib M, Zarate AO, eds. Reconsidering age adjustment procedures: Workshop proceedings. National Center for Health Statistics. Vital Health Stat 4(29). 1992.
2. Grove RD, Hetzel AM. Vital statistics rates in the United States, 1940–1960. Public Health Service. Washington: National Center for Health Statistics. 1968.

---

**Suggested citation**

National Center for Health Statistics. Births, marriages, divorces, and deaths for June 1997. Monthly vital statistics report; vol 46 no 6. Hyattsville, Maryland: National Center for Health Statistics. 1998.

---

**Copyright information**

All material appearing in this report is in the public domain and may be reproduced or copied without permission; citation as to source, however, is appreciated.

---

**National Center for Health Statistics**

Director  
Edward J. Sondik, Ph.D.

Deputy Director  
Jack R. Anderson

**Division of Vital Statistics**

Director  
Mary Anne Freedman

---

**DEPARTMENT OF  
HEALTH & HUMAN SERVICES**

Centers for Disease Control and Prevention  
National Center for Health Statistics  
6525 Belcrest Road  
Hyattsville, Maryland 20782-2003

FIRST CLASS MAIL  
POSTAGE & FEES PAID  
PHS/NCHS  
PERMIT NO. G-281

---

OFFICIAL BUSINESS  
PENALTY FOR PRIVATE USE, \$300

---

To receive this publication regularly, contact  
the National Center for Health Statistics by  
calling 301-436-8500  
E-mail: [nchsquery@cdc.gov](mailto:nchsquery@cdc.gov)  
Internet: [www.cdc.gov/nchswww](http://www.cdc.gov/nchswww)

---

DHHS Publication No. (PHS) 98-1120  
8-0228 (1/98)