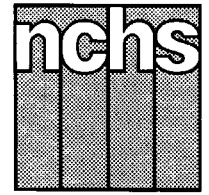


Monthly Vital Statistics Report



Provisional Data From the CENTERS FOR DISEASE CONTROL AND PREVENTION/National Center for Health Statistics

Births, Marriages, Divorces, and Deaths for March 1996

Births

According to provisional reports, an estimated 334,000 births occurred in the United States during March 1996. This was a decrease of 1 percent from the provisional number of births reported for March 1995 (338,000). The birth rate, 14.9 live births per 1,000 population, was 2 percent lower than the rate of 15.2 for March 1995. The fertility rate, 66.3 live births per 1,000 women aged 15–44 years, was 1 percent lower than the comparable rate for March 1995 (67.1). The seasonally adjusted fertility rate (67.2) was 1 percent lower than the comparable rate for March 1995 (68.0).

During the first quarter of 1996, an estimated 957,000 births occurred, a

decline of 2 percent from the 976,000 reported for the first quarter of 1995. The birth rate for this period decreased by 3 percent, from 15.1 in 1995 to 14.6 in 1996. The fertility rate for the first quarter of 1996 was 64.6, 3 percent lower than the rate for the first quarter of 1995 (66.6).

An estimated 3,873,000 live births occurred in the 12-month period ending with March 1996, a decline of 2 percent from the 3,959,000 births reported for the same period a year earlier. The birth rate of 14.7 was 3 percent lower than the rate of 15.1 for the preceding 12-month period. The fertility rate for the most recent 12-month period was 65.1, 2 percent lower than the rate for the 12 months ending with March 1995 (66.6). These lower rates

continue the generally downward trend observed since early 1991.

Natural increase

As a result of natural increase, the excess of births over deaths, an estimated 128,000 people, or 5.7 persons per 1,000 population, were added to the population during March 1996.

For the 12-month period ending with March 1996, 1,561,000 persons were added to the population. This represented a rate of natural increase of 5.9, 8 percent lower than the rate of 6.4 for the preceding 12-month period. The decline in the rate of natural increase was due to a decrease in the birth rate and an increase in the death rate.

Provisional Vital Statistics for the United States

[Rates for infant deaths are deaths under 1 year per 1,000 live births; fertility rates are live births per 1,000 women aged 15–44 years; all other rates are per 1,000 total population. Data are subject to monthly reporting variation; see [Technical notes](#)]

Item	March				January–March				12 months ending with March				
	Number		Rate		Number		Rate		Number		Rate		
	1996	1995	1996	1995	1996	1995	1996	1995	1996	1995	1996	1995	1994
Live births	334,000	338,000	14.9	15.2	957,000	976,000	14.6	15.1	3,873,000	3,959,000	14.7	15.1	15.6
Fertility rate	66.3	67.1	64.6	66.6	65.1	66.6	68.4
Deaths	206,000	208,000	9.2	9.4	625,000	622,000	9.5	9.6	2,312,000	2,280,000	8.8	8.7	8.9
Infant deaths	2,500	2,700	7.5	8.0	7,100	7,800	7.5	8.0	28,700	31,000	7.4	7.9	8.2
Natural increase	128,000	130,000	5.7	5.8	332,000	354,000	5.1	5.5	1,561,000	1,679,000	5.9	6.4	6.7
Marriages	147,000	148,000	6.8	6.8	409,000	406,000	6.4	6.4	2,339,000	2,358,000	8.9	9.0	9.0
Divorces	90,000	98,000	4.0	4.4	272,000	283,000	4.1	4.4	1,157,000	1,187,000	4.4	4.5	4.6
Population base (in millions)	264.3	262.0	263.5	261.4	258.7

... Category not applicable.

NOTES: Figures include revisions received from the States. Twelve-month figures for the current year reflect revisions received for previous months, and figures for earlier years may differ from those previously published.



U.S. DEPARTMENT OF HEALTH AND HUMAN SERVICES
Public Health Service
Centers for Disease Control and Prevention
National Center for Health Statistics



Marriages

An estimated 147,000 couples married in March 1996, 1 percent fewer than in March a year earlier (148,000). The current monthly marriage rate, 6.8 per 1,000 population, was unchanged from the rate for March 1995.

The number of marriages performed in the first quarter of 1996 was 409,000, 1 percent higher than the number performed during the comparable period for 1995 (406,000). The marriage rate (6.4) for the 3-month period in 1996 was the same as in 1995.

Approximately 2,339,000 marriages were performed during the 12-month period ending with March 1996, 1 percent fewer than for the same period a year earlier (2,358,000). The marriage rate for the current 12-month period (8.9) was 1 percent lower than the rate for the same period ending with March 1995 (9.0).

Divorces

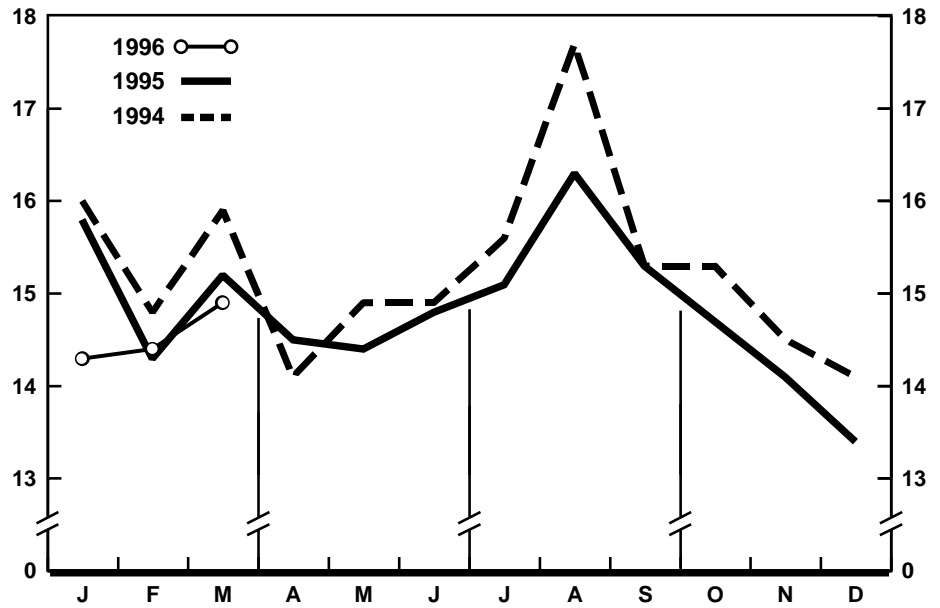
An estimated 90,000 couples divorced in March 1996, 8 percent fewer than the estimated number for March 1995 (98,000). The divorce rate was 4.0 per 1,000 population for March 1996, 9 percent lower than the rate for March 1995 (4.4).

The number of divorces granted in the first quarter of 1996 was 272,000, 4 percent fewer than the number granted for the same period in 1995 (283,000). The divorce rate for the 3-month period in 1996 (4.1) was 7 percent lower than the rate for the same period in 1995 (4.4).

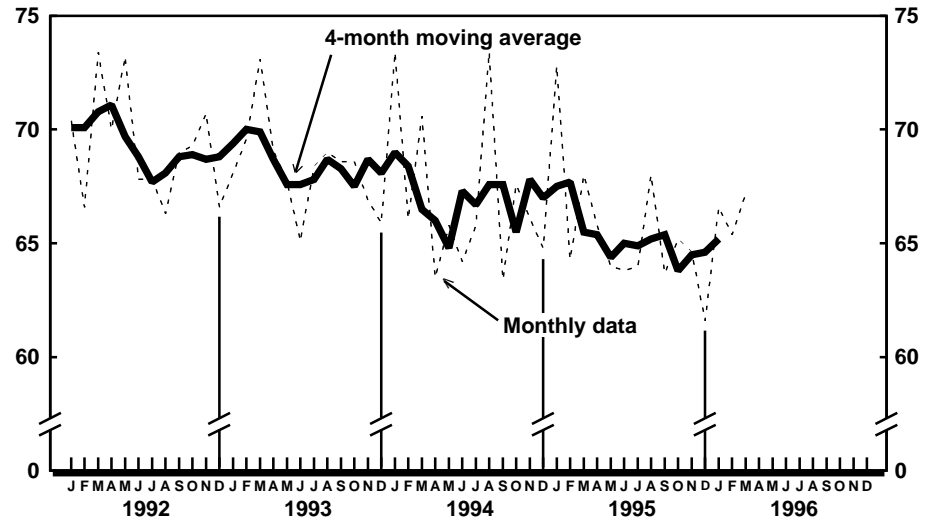
Approximately 1,157,000 couples divorced during the 12-month period ending with March 1996, 3 percent fewer than the number for the comparable period ending with March 1995 (1,187,000). The decline in the number contributed to a 2-percent decrease in the divorce rate—from 4.5 for the 12-month period ending with March 1995 to 4.4 for the current period.

Deaths

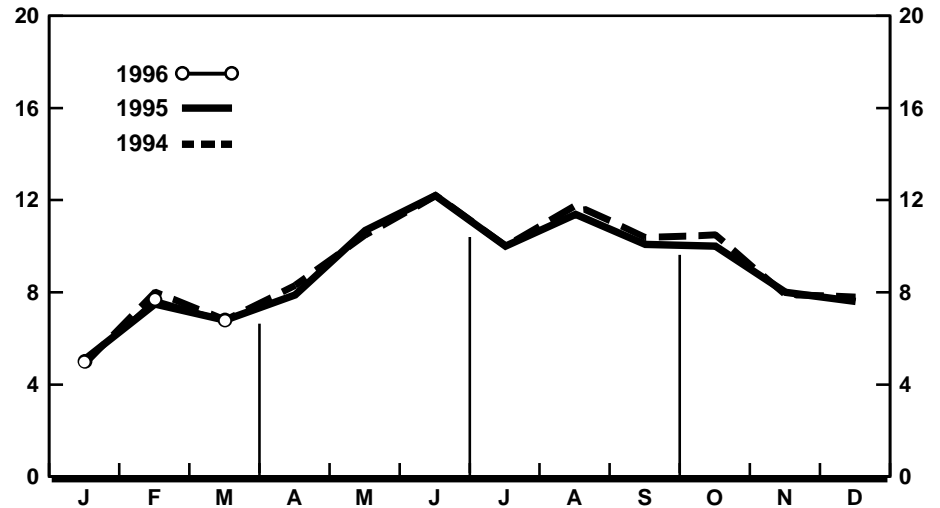
For March 1996 there were an estimated 206,000 deaths in the United States. The death rate was 9.2 deaths per 1,000 population, 2 percent lower than the rate of 9.4 for March a year earlier. Among the 206,000 deaths for March 1996 were 2,500 deaths at ages under 1 year.



Provisional birth rates per 1,000 population by month: United States, 1994-96



Provisional seasonally adjusted fertility rates per 1,000 women aged 15-44 years: United States, 1992-96



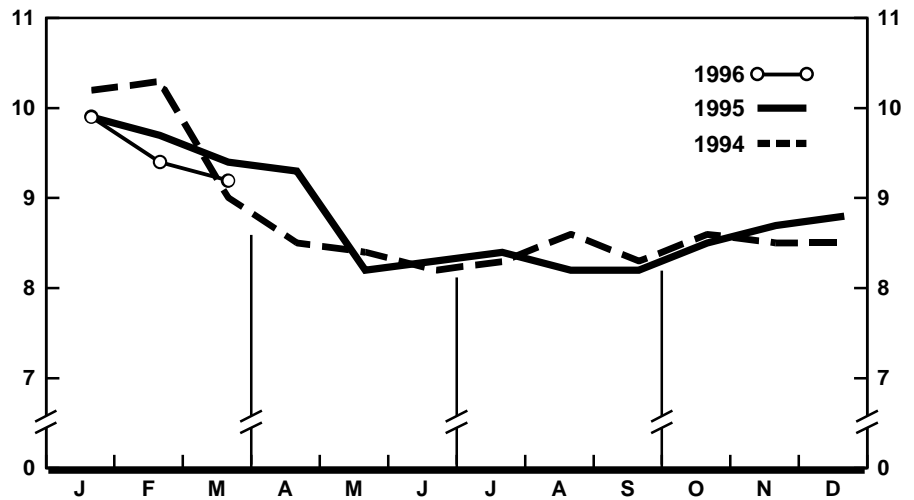
Provisional marriage rates per 1,000 population by month: United States, 1994-96

According to provisional statistics, there were 625,000 deaths during the first quarter of 1996, an increase of less than 1 percent from the the first quarter of 1995 (622,000). The death rate, 9.5 per 1,000 population, was 1 percent lower than the rate of 9.6 for the first quarter of 1995. Among the 625,000 deaths for the first quarter of 1996 were 7,100 deaths at ages under 1 year, yielding an infant mortality rate of 7.5 per 1,000 live births. This rate was 6 percent lower than the rate of 8.0 for the comparable 3-month period in 1995.

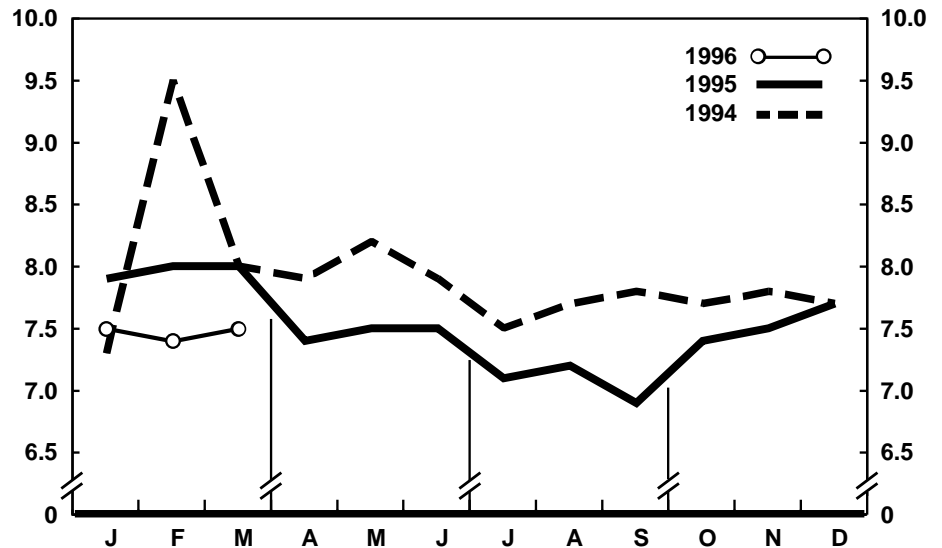
The death rate for the 12 months ending with March 1996 was 8.8 deaths per 1,000 population, 1 percent higher than the rate of 8.7 for the comparable 12-month period a year earlier. The infant mortality rate for this 12-month period was 7.4 per 1,000 live births, 6 percent lower than the rate of 7.9 for the 12 months ending with March 1995.

Current Mortality Sample, 12 months ending with February 1996—The provisional death rate for the 12 months ending with February 1996 was 879.1 per 100,000 population, 1.1 percent higher than the rate of 869.5 for the 12-month period ending February 1995. The provisional age-adjusted death rate for the 12-month period ending with February 1996 was 501.7 per 100,000 U.S. standard million population, less than 1 percent below the rate of 504.7 for the 12-month period ending with February 1995. Age-adjusted death rates control for changes and variations in the age composition of the population; therefore, they are better indicators than crude rates for showing changes in mortality risk over time and for showing differences between race-sex groups within the population. Among the race-sex groups, the changes in the estimated age-adjusted death rates between the two 12-month periods were not statistically significant. By age the death rate for the total population decreased for the age groups under 1 year and 55–64 years and increased for the age group 75–84 years.

Among the major causes of death, the estimated death rate decreased between the two successive 12-month periods for Homicide and legal intervention. The death rate increased between the two successive 12-month periods for Diabetes



Provisional death rates per 1,000 population by month: United States, 1994-96



Provisional infant mortality rates per 1,000 live births by month: United States, 1994-96

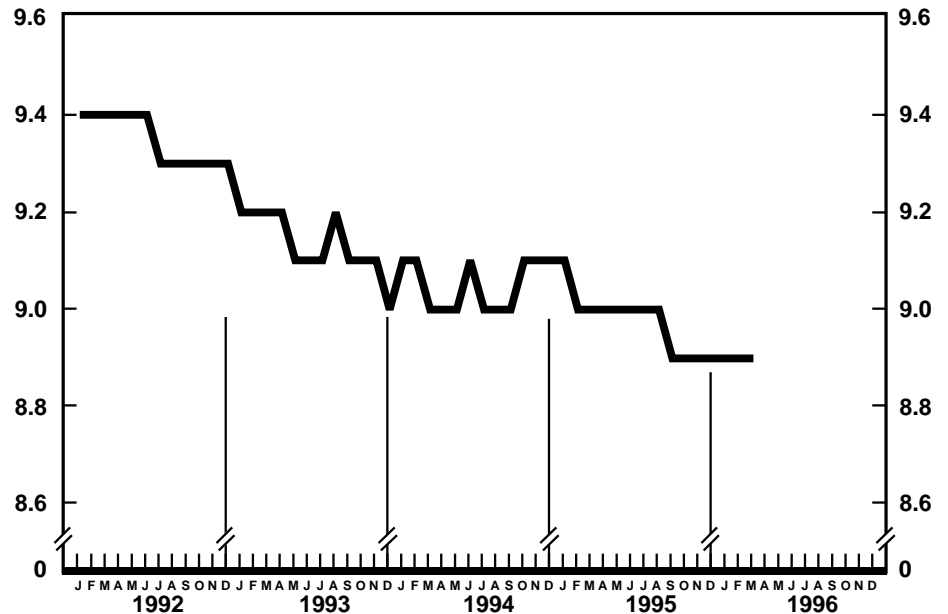


Provisional birth rates per 1,000 population for successive 12-month periods ending with month indicated: United States, 1992-96

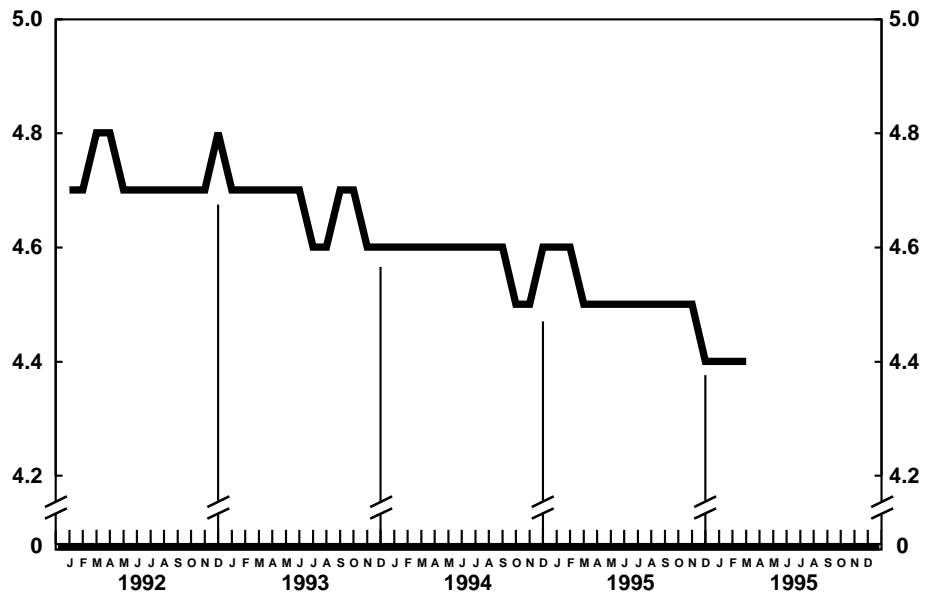
mellitus and Alzheimer's disease. The increase for Alzheimer's disease may reflect changes in diagnostic practices rather than real increases in mortality from this cause.

The death rate for injury by firearms for the 12 months ending with February 1996 was 13.5 per 100,000 population, 7.5 percent less than the rate of 14.6 for the comparable 12-month period a year earlier.

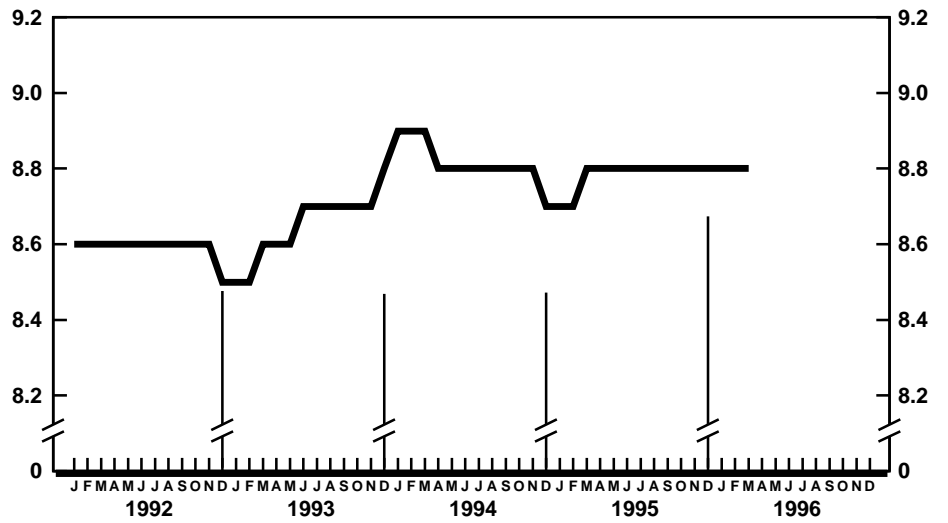
The infant mortality rate for the 12 months ending with February 1996 was 747.6 per 100,000 live births, 4.9 percent lower than the rate of 785.9 for the same 12-month period a year earlier. For infants under 28 days of age, the 12-month rate ending February 1996 was 472.5, 4.7 percent lower than the rate of 496.0 for the 12-month period a year earlier. The infant mortality rate for infants aged 28 days–11 months was 274.2 compared with a rate of 289.3 for the 12-month period a year earlier. The changes in the mortality rates for infants under 28 days of age and for infants aged 28 days–11 months were not statistically significant. Among causes of infant death, the changes in infant mortality rates between the two successive 12-month periods were also not statistically significant.



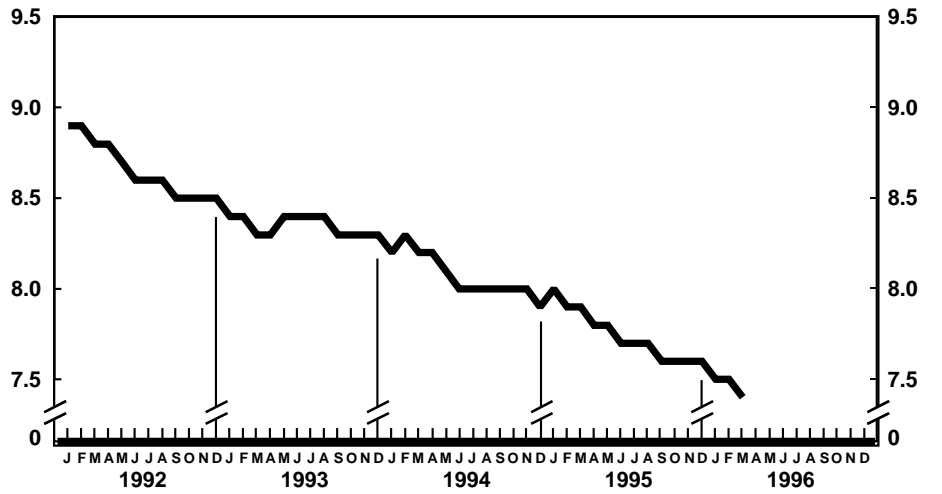
Provisional marriage rates per 1,000 population for successive 12-month periods ending with month indicated: United States, 1992-96



Provisional divorce rates per 1,000 population for successive 12-month periods ending with month indicated: United States, 1992-96



Provisional death rates per 1,000 population for successive 12-month periods ending with month indicated: United States, 1992-96



Provisional infant mortality rates per 1,000 live births for successive 12-month periods ending with month indicated: United States, 1992-96

Table 1. Provisional number of live births, marriages, divorces, deaths, and infant deaths and rates, by month: United States, January 1995–March 1996[Data are provisional and are subject to monthly reporting variation; see [Technical notes](#)]

Period	Live births				Marriages		Divorces		Deaths		Infant deaths	
	Number	Rate per 1,000 women aged 15–44 years			Number	Rate per 1,000 population	Number	Rate per 1,000 population	Number	Rate per 1,000 population	Number	Rate per 1,000 live births
		Rate per 1,000 population	Unadjusted	Seasonally adjusted ¹								
1995:												
January	350,000	15.8	69.4	72.8	111,000	5.1	96,000	4.3	220,000	9.9	2,700	7.9
February	287,000	14.3	63.1	64.3	146,000	7.5	89,000	4.4	194,000	9.7	2,400	8.0
March	338,000	15.2	67.1	68.0	148,000	6.8	98,000	4.4	208,000	9.4	2,700	8.0
April	313,000	14.5	64.1	65.8	165,000	7.9	98,000	4.6	200,000	9.3	2,300	7.4
May	321,000	14.4	63.5	64.0	238,000	10.7	103,000	4.6	184,000	8.2	2,500	7.5
June	318,000	14.8	65.2	63.8	263,000	12.2	104,000	4.8	180,000	8.3	2,400	7.5
July	337,000	15.1	66.6	64.0	224,000	10.0	97,000	4.4	188,000	8.4	2,400	7.1
August	364,000	16.3	72.1	68.0	254,000	11.4	99,000	4.4	184,000	8.2	2,400	7.2
September	331,000	15.3	67.6	63.7	219,000	10.1	99,000	4.6	178,000	8.2	2,200	6.9
October	328,000	14.7	64.9	65.2	224,000	10.0	98,000	4.4	190,000	8.5	2,500	7.4
November	306,000	14.1	62.6	64.6	174,000	8.0	95,000	4.4	188,000	8.7	2,300	7.5
December	300,000	13.4	59.3	61.6	169,000	7.6	92,000	4.1	197,000	8.8	2,400	7.7
1996:												
January	320,000	14.3	63.5	66.6	107,000	5.0	96,000	4.3	221,000	9.9	2,400	7.5
February	302,000	14.4	64.1	65.4	155,000	7.7	86,000	4.1	198,000	9.4	2,300	7.4
March	334,000	14.9	66.3	67.2	147,000	6.8	90,000	4.0	206,000	9.2	2,500	7.5

¹The method of seasonal adjustment, developed by the U.S. Bureau of the Census, is described in *The X-11 Variant of the Census Method II Seasonal Adjustment Program*, Technical Paper No. 15 (1967 revision).

NOTE: Figures include all revisions received from the States and, therefore, may differ from those previously published.

Table 2. Provisional number of live births and deaths: Each division and State, March 1995 and 1996, and cumulative figures, 1994–96

[Data are estimates by State of residence; see [Technical notes](#)]

Area	Live births					Deaths				
	March		January–March			March		January–March		
	1996	1995	1996	1995	1994	1996	1995	1996	1995	1994
New England	15,324	14,612	45,088	44,271	42,810	8,724	10,828	29,067	32,313	30,168
Maine	1,129	1,222	3,108	3,107	2,823	851	952	2,988	2,859	2,863
New Hampshire	1,250	1,475	2,945	3,754	3,441	848	870	2,355	2,559	2,402
Vermont	514	516	1,563	1,648	1,476	423	425	1,361	1,427	1,198
Massachusetts	8,102	5,440	25,562	19,152	20,867	3,341	5,546	12,817	15,886	13,306
Rhode Island	1,024	1,095	2,844	2,742	2,981	810	863	2,406	2,553	2,499
Connecticut	3,305	4,864	9,066	13,868	11,222	2,451	2,172	7,140	7,029	7,900
Middle Atlantic	44,770	45,489	121,415	123,321	131,845	30,992	32,572	97,027	101,419	100,984
New York	21,249	23,639	64,244	59,929	67,211	13,540	14,075	43,444	45,780	46,204
New Jersey	10,482	9,571	19,284	25,306	25,445	6,419	7,568	19,142	20,934	19,379
Pennsylvania	13,039	12,279	37,887	38,086	39,189	11,033	10,929	34,441	34,705	35,401
East North Central	49,458	49,548	150,947	146,716	155,662	32,289	34,882	102,542	103,164	109,062
Ohio	11,575	11,863	35,947	35,588	40,481	9,939	8,794	28,002	26,961	30,513
Indiana	5,197	3,126	18,620	15,885	20,129	2,485	4,555	12,496	13,135	14,315
Illinois	15,311	15,468	44,740	44,627	44,918	9,144	9,784	27,760	29,117	28,953
Michigan	11,890	13,143	35,408	34,232	32,500	6,961	7,752	21,977	22,155	22,598
Wisconsin	5,485	5,948	16,232	16,384	17,634	3,760	3,997	12,307	11,796	12,683
West North Central	23,817	18,779	64,251	60,757	61,883	15,648	14,911	47,255	46,099	47,434
Minnesota	5,376	5,334	15,403	14,895	15,624	3,140	3,147	9,739	9,736	9,904
Iowa	4,009	2,667	8,353	8,001	8,258	2,115	2,490	8,308	6,450	7,210
Missouri	6,996	5,746	19,734	19,184	18,987	5,998	4,529	15,646	16,195	16,021
North Dakota	719	740	2,014	2,141	2,063	516	507	1,499	1,610	1,559
South Dakota	942	1,204	2,150	2,696	2,636	560	667	1,456	1,805	1,919
Nebraska	1,889	1,835	5,844	5,607	5,261	1,351	1,297	4,040	3,986	3,881
Kansas	3,886	1,253	10,753	8,233	9,054	1,968	2,274	6,567	6,317	6,940
South Atlantic	51,990	53,006	158,288	167,053	166,303	38,145	40,376	121,673	121,189	118,471
Delaware	834	754	2,535	2,393	2,538	527	542	1,683	1,606	1,639
Maryland	5,249	6,283	16,919	18,442	15,613	3,646	3,819	10,968	10,791	9,903
District of Columbia	669	795	2,032	2,272	2,457	535	582	1,622	1,714	1,766
Virginia	7,773	7,533	19,361	25,215	23,551	4,668	4,240	13,825	14,045	14,450
West Virginia	1,484	2,041	4,698	5,379	5,900	1,754	2,132	4,549	5,420	5,819
North Carolina	8,371	7,314	25,407	24,879	25,149	5,729	6,010	18,082	17,841	18,272
South Carolina	3,604	3,888	12,999	12,278	13,578	2,675	2,793	9,569	8,645	8,173
Georgia	8,512	10,207	29,218	30,891	28,709	5,193	5,363	16,990	16,424	16,412
Florida	15,494	14,191	45,119	45,304	48,808	13,418	14,895	44,385	44,703	42,037
East South Central	19,238	18,181	51,816	55,174	59,491	15,018	13,776	42,371	43,384	43,905
Kentucky	4,138	4,551	13,038	12,257	13,134	3,131	3,541	10,335	11,267	10,699
Tennessee	6,548	5,675	14,177	17,993	19,996	5,379	4,099	12,407	13,388	13,041
Alabama	5,535	5,075	15,703	14,834	15,400	4,242	3,696	12,196	11,608	12,574
Mississippi	3,017	2,880	8,898	10,090	10,961	2,266	2,440	7,433	7,121	7,591
West South Central	39,240	37,986	123,246	129,636	118,880	23,852	22,274	68,665	65,488	68,397
Arkansas	2,923	2,475	8,578	7,929	8,642	2,076	2,277	6,854	6,330	7,709
Louisiana	5,571	5,375	17,262	18,733	18,333	4,234	3,456	11,876	10,899	11,451
Oklahoma	3,273	4,123	11,238	11,184	11,998	3,087	3,103	9,245	8,731	9,098
Texas ¹	27,473	26,013	86,168	91,790	79,907	14,455	13,438	40,690	39,528	40,139
Mountain	19,601	23,591	61,560	62,413	58,926	8,395	11,001	29,695	28,826	28,901
Montana	925	908	2,626	2,672	2,500	625	678	2,009	2,016	1,884
Idaho	1,386	1,573	4,599	4,142	4,242	651	773	2,157	2,172	2,255
Wyoming	539	526	1,464	1,655	1,488	287	298	854	971	896
Colorado	3,836	4,945	12,078	13,169	13,264	2,111	2,881	6,797	6,616	6,662
New Mexico	2,314	2,028	6,908	6,664	7,178	1,034	1,184	3,328	3,156	3,347
Arizona	4,873	8,846	19,911	20,546	14,122	1,876	3,125	8,199	8,073	7,892
Utah	3,617	3,199	9,300	9,016	9,742	837	993	2,822	2,750	2,881
Nevada	2,111	1,566	4,674	4,549	6,390	974	1,069	3,529	3,072	3,084
Pacific	65,385	71,709	172,644	178,308	192,864	33,188	27,535	86,833	79,928	80,438
Washington	8,597	6,277	20,167	18,276	18,933	3,865	2,622	10,660	8,938	9,731
Oregon	3,695	4,007	11,657	11,146	11,281	5,203	2,434	10,702	7,695	7,734
California ¹	50,630	58,900	133,692	141,889	154,211	23,258	21,590	62,873	60,762	60,514
Alaska	883	995	2,381	2,711	3,796	165	200	524	515	608
Hawaii	1,580	1,530	4,747	4,286	4,643	697	689	2,074	2,018	1,851
Puerto Rico ²	4,843	5,228	15,273	14,955	---	2,063	2,575	6,589	7,723	---

--- Data not available.

¹Figures include adjustments for varying lengths of reporting periods; see [Technical notes](#).

²Data for Puerto Rico are not included in U.S. total figures.

NOTES: Figures include all revisions received from the States. Cumulative figures for the current year reflect revisions received for previous months, and figures for earlier years may differ from those previously published.

Table 3. Provisional number of marriages and divorces: Each division and State, March 1995 and 1996, and cumulative figures, 1994–96[By State of occurrence. Number of events reported; see [Technical notes](#). Divorces include reported annulments]

Area	Marriages					Divorces				
	March		January–March			March		January–March		
	1996	1995	1996	1995	1994	1996	1995	1996	1995	1994
New England	4,269	4,700	11,944	13,493	16,706	2,505	2,789	8,514	8,097	8,943
Maine	306	375	1,251	1,023	1,079	192	362	890	1,024	904
New Hampshire	411	434	1,281	1,254	1,216	461	446	1,196	1,215	1,162
Vermont	292	276	837	905	732	138	140	679	893	653
Massachusetts	1,628	2,626	5,121	7,343	10,419	610	552	2,438	1,759	2,732
Rhode Island	388	253	943	757	789	320	352	794	924	847
Connecticut	1,244	736	2,511	2,211	2,471	784	937	2,517	2,282	2,645
Middle Atlantic	15,530	15,989	36,700	40,805	39,159	9,082	12,151	28,444	28,732	28,258
New York ¹	9,505	10,132	22,472	25,008	22,305	3,430	6,356	13,662	12,972	13,463
New Jersey	3,114	2,887	6,589	6,898	6,978	2,182	2,150	6,000	6,043	5,690
Pennsylvania	2,911	2,970	7,639	8,899	9,876	3,470	3,645	8,782	9,717	9,105
East North Central	17,315	17,358	46,415	51,276	50,099	² 11,767	² 12,824	² 33,130	² 37,279	² 35,246
Ohio	4,979	4,457	11,516	14,845	14,689	4,248	4,307	10,185	12,372	11,911
Indiana	2,714	2,582	7,101	7,606	7,297	---	---	---	---	---
Illinois	5,162	5,550	13,610	14,303	14,200	3,395	3,421	8,709	9,627	8,865
Michigan	2,989	3,185	9,500	9,774	9,289	2,708	3,569	9,848	10,820	10,198
Wisconsin	1,471	1,584	4,688	4,748	4,624	1,416	1,527	4,388	4,460	4,272
West North Central	7,844	7,052	24,375	24,142	22,504	5,983	6,133	18,640	18,490	19,090
Minnesota	1,635	1,407	4,428	4,074	3,826	1,160	1,333	3,391	3,612	4,105
Iowa	1,020	1,103	3,231	3,413	3,093	952	918	2,779	2,919	2,947
Missouri	2,544	1,995	9,252	8,631	7,275	2,080	2,422	6,330	7,215	6,541
North Dakota	196	177	662	566	588	193	225	550	543	520
South Dakota	358	393	916	1,184	1,110	207	261	649	725	668
Nebraska	811	746	1,935	1,929	1,969	452	474	1,443	1,530	1,663
Kansas	1,280	1,231	3,951	4,345	4,643	939	500	3,498	1,946	2,646
South Atlantic	31,352	34,839	88,334	90,624	89,727	16,726	18,489	46,529	53,710	56,086
Delaware	315	301	800	744	745	243	327	797	1,023	750
Maryland	2,154	2,435	6,424	6,977	7,199	1,385	1,359	3,118	3,731	3,972
District of Columbia	63	186	266	270	216	54	100	208	248	460
Virginia	4,651	4,630	10,867	12,611	12,628	2,274	1,569	5,815	5,907	6,584
West Virginia	575	372	1,741	1,430	1,838	575	626	1,474	1,768	2,477
North Carolina	3,863	4,251	11,573	11,098	8,075	2,414	3,550	7,352	8,756	8,240
South Carolina	3,425	3,189	9,174	8,762	10,778	1,340	1,083	3,812	3,289	3,480
Georgia	4,083	4,861	12,733	13,089	13,175	2,691	3,106	8,194	8,789	8,945
Florida	12,223	14,614	34,756	35,643	35,073	5,750	6,769	15,759	20,199	21,178
East South Central	12,907	13,673	37,429	41,687	37,739	8,092	6,901	24,896	23,298	23,116
Kentucky	2,699	3,083	7,846	10,034	9,576	1,719	1,639	5,309	5,725	5,375
Tennessee	4,134	6,097	14,978	18,799	14,839	2,761	2,362	9,405	8,257	7,721
Alabama	4,376	2,745	10,123	8,583	8,882	2,542	1,218	6,382	5,527	6,605
Mississippi	1,698	1,748	4,482	4,271	4,442	1,070	1,682	3,800	3,789	3,415
West South Central	22,450	25,801	67,419	71,402	73,865	² 12,033	² 11,165	² 35,235	² 33,645	² 35,976
Arkansas	3,048	3,023	5,954	6,630	8,902	1,350	1,345	2,700	3,088	4,707
Louisiana	2,814	2,297	8,337	7,857	9,017	---	---	---	---	---
Oklahoma	2,160	2,222	5,554	5,652	6,023	1,743	1,823	4,962	5,382	5,242
Texas ³	14,428	18,259	47,574	51,263	49,923	8,940	7,997	27,573	25,175	26,027
Mountain	19,798	21,419	60,954	57,775	58,950	² 5,415	² 6,181	² 15,741	² 17,304	² 21,702
Montana	303	370	1,001	914	928	325	353	1,020	920	1,043
Idaho	778	1,253	2,864	3,396	3,554	615	594	1,724	1,704	1,827
Wyoming	210	194	737	764	752	249	290	715	816	706
Colorado	2,048	2,097	6,027	5,881	5,997	---	---	---	---	4,653
New Mexico ^{4,5}	1,147	1,174	3,621	2,916	2,433	919	948	2,855	2,522	2,335
Arizona ¹	2,794	3,743	9,104	8,935	9,160	2,292	2,031	6,294	6,018	5,773
Utah	1,430	1,576	4,466	4,448	4,239	571	811	1,973	2,251	2,296
Nevada	11,088	11,012	33,134	30,521	31,887	444	1,154	1,160	3,073	---
Pacific	27,055	19,094	70,386	53,127	58,397	² 4,474	² 4,300	² 13,424	² 13,245	² 13,960
Washington	4,030	2,000	6,666	7,542	6,794	2,429	2,370	7,879	7,432	7,742
Oregon	1,716	1,694	4,374	4,805	4,261	1,335	1,187	3,783	3,750	4,344
California	19,409	13,624	52,058	35,580	42,334	---	---	---	---	---
Alaska	309	336	958	1,044	1,076	333	227	677	726	817
Hawaii	1,591	1,440	4,330	4,156	3,932	377	516	1,085	1,337	1,057
Puerto Rico ⁶	2,177	2,680	2,177	7,395	---	---	---	---	---	---

--- Data not available.

¹Figures for marriages are marriage licenses issued for some counties.²Excludes figures for State(s) shown below as not available.³Figures include adjustments for varying lengths of reporting periods; see [Technical notes](#).⁴Figures for marriages are marriage licenses issued.⁵Figures for divorces include estimates for some counties.⁶Data for Puerto Rico are not included in U.S. total figures.

NOTES: Figures include all revisions received from the States. Cumulative figures for the current year reflect revisions received for previous months, and figures for earlier years may differ from those previously published.

Table 4. Provisional number of deaths under 1 year and infant mortality rates: Each division and State, 12 months ending with March 1995 and 1996

[Data are estimates by State of residence. Figures should be interpreted with caution because of conversion of place of occurrence to place of residence; see [Technical notes](#). Infant mortality rates are deaths under 1 year per 1,000 live births in specified area]

Area	12 months ending with March			
	1996		1995	
	Number	Rate	Number	Rate
New England	883	5.2	1,029	5.8
Maine	85	6.1	86	5.9
New Hampshire	63	4.4	92	6.2
Vermont	43	6.4	49	6.7
Massachusetts	366	4.5	491	6.0
Rhode Island	80	6.3	80	6.1
Connecticut	246	6.1	231	5.2
Middle Atlantic	3,926	7.4	4,267	7.8
New York	2,033	7.6	2,186	8.0
New Jersey	766	7.0	878	7.5
Pennsylvania	1,127	7.4	1,203	7.7
East North Central	5,233	8.3	5,491	8.7
Ohio	1,327	8.5	1,327	8.4
Indiana	714	8.2	773	9.8
Illinois	1,594	8.6	1,693	9.0
Michigan	1,093	8.2	1,167	8.2
Wisconsin	505	7.5	531	7.9
West North Central	1,814	7.1	1,914	7.6
Minnesota	394	6.2	429	6.7
Iowa	233	6.3	247	6.9
Missouri	594	7.9	594	7.9
North Dakota	41	4.8	54	6.2
South Dakota	82	8.2	123	11.5
Nebraska	181	7.7	194	8.3
Kansas	289	7.3	273	8.4
South Atlantic	5,541	8.6	5,845	8.8
Delaware	71	7.0	69	6.8
Maryland	590	8.3	662	8.9
District of Columbia	153	17.6	181	19.1
Virginia	657	7.8	730	7.5
West Virginia	157	7.7	150	7.1
North Carolina	938	9.1	997	9.8
South Carolina	490	9.7	427	8.6
Georgia	1,054	9.5	1,099	9.9
Florida	1,431	7.6	1,530	8.2
East South Central	2,066	9.4	2,195	9.7
Kentucky	385	7.4	415	8.1
Tennessee	678	9.7	718	9.7
Alabama	619	10.0	629	10.5
Mississippi	384	10.7	433	10.2
West South Central	3,397	7.2	3,725	7.7
Arkansas	271	7.7	304	9.0
Louisiana	576	8.7	646	9.4
Oklahoma	419	9.1	433	9.7
Texas ¹	2,131	6.5	2,342	7.0
Mountain	1,640	6.8	1,759	7.1
Montana	83	7.4	98	8.7
Idaho	121	6.7	118	6.8
Wyoming	50	8.2	60	9.2
Colorado	336	6.9	348	6.4
New Mexico	173	6.3	241	8.8
Arizona	530	7.8	545	7.5
Utah	209	5.3	229	6.0
Nevada	138	6.4	120	6.1
Pacific	4,236	6.0	4,627	6.4
Washington	307	3.8	413	5.3
Oregon	263	6.1	276	6.5
California ¹	3,479	6.3	3,741	6.6
Alaska	65	6.7	75	6.8
Hawaii	122	6.5	122	6.5
Puerto Rico ²	648	10.7	---	---

--Data not available.

¹Figures include adjustments for varying lengths of reporting periods; see [Technical notes](#).

²Data for Puerto Rico are not included in U.S. total figures.

NOTES: Figures include all revisions received from the States. Figures for the current year reflect revisions received for previous months, and figures for earlier years may differ from those previously published.

Table 5. Provisional number of deaths and death rates, by age, race, and sex, and age-adjusted death rates by race and sex: United States, February 1995 and 1996, cumulative figures 1995 and 1996, and 12 months ending with February 1995 and 1996

[Data are provisional, estimated from a 10-percent sample of deaths. Age-specific rates on an annual basis per 100,000 population in specified group; age-adjusted rates per 100,000 U.S. standard million population; see [Technical notes](#). Because of rounding of estimates, figures may not add to totals. For method of computation and information on standard errors of the estimates, see [Technical notes](#)]

Age, race, and sex	February				January–February				12 months ending with February			
	1996		1995		1996		1995		1996		1995	
	Number	Rate	Number	Rate	Number	Rate	Number	Rate	Number	Rate	Number	Rate
All races, both sexes¹												
All ages.	198,000	943.6	194,000	965.9	419,000	967.5	414,000	977.9	2,314,000	879.1	2,271,000	869.5
Under 1 year.									28,900	² 752.5	31,100	² 790.7
1–4 years	} 3,390	73.9	3,540	80.1	7,040	74.2	7,610	81.8	6,540	41.6	7,120	44.8
5–14 years									8,260	21.6	8,730	23.2
15–24 years	2,410	84.7	2,490	90.4	5,230	88.8	5,370	92.5	34,400	95.7	35,460	98.5
25–34 years	4,260	132.5	4,560	144.8	9,340	140.3	9,990	150.3	57,620	141.4	58,790	142.2
35–44 years	8,300	243.7	8,150	251.9	17,560	249.3	17,300	254.0	102,900	241.2	100,840	240.7
45–54 years	11,930	472.1	11,530	490.9	24,320	465.6	24,760	501.3	142,710	455.2	137,310	455.7
55–64 years	19,670	1,168.8	18,780	1,161.8	41,360	1,188.5	40,920	1,201.3	234,890	1,109.8	237,800	1,130.1
65–74 years	40,140	2,704.7	40,530	2,818.1	85,530	2,783.8	87,230	2,878.6	477,250	2,544.4	481,890	2,570.6
75–84 years	57,830	6,454.9	54,420	6,421.7	121,390	6,554.2	117,570	6,588.2	655,390	5,852.2	638,390	5,786.2
85 years and over.	49,510	16,929.0	49,920	18,141.7	106,990	17,694.8	102,730	17,734.7	562,520	15,394.6	533,400	15,257.4
Not stated	80	...	50	...	130	...	190	...	960	...	760	...
Age-adjusted rate ³	527.3	...	542.8	...	538.7	...	553.8	...	501.7	...	504.7
All races, male¹												
All ages.	99,250	970.7	97,300	992.3	210,150	993.8	208,030	1,007.3	1,173,890	913.3	1,158,000	907.9
Under 1 year.									16,080	² 818.7	17,310	² 861.2
1–4 years	} 1,860	79.2	1,940	85.8	3,920	80.7	4,260	89.6	3,680	45.7	4,210	51.8
5–14 years									5,090	26.0	5,130	26.6
15–24 years	1,770	121.8	1,830	130.1	3,940	131.1	4,140	139.7	26,240	143.0	27,260	148.3
25–34 years	3,060	190.5	3,360	213.4	6,610	198.9	7,240	218.1	41,760	205.1	42,940	207.7
35–44 years	5,510	326.0	5,750	358.4	11,850	339.2	11,890	352.0	70,850	334.8	70,070	337.1
45–54 years	7,460	604.2	7,210	628.5	15,530	609.0	15,460	640.8	90,880	593.4	86,130	584.9
55–64 years	11,620	1,451.6	11,400	1,484.4	24,660	1,489.4	24,200	1,495.8	140,930	1,400.8	144,590	1,446.0
65–74 years	22,720	3,437.7	23,030	3,607.0	48,420	3,540.2	49,630	3,689.7	272,780	3,271.1	274,750	3,308.2
75–84 years	28,580	8,162.5	26,380	8,051.5	59,940	8,283.0	57,360	8,315.8	321,720	7,390.8	310,900	7,323.9
85 years and over.	16,620	20,227.2	16,370	21,318.1	35,210	20,716.4	33,760	20,879.9	183,250	17,930.5	174,200	17,613.8
Not stated	40	...	30	...	60	...	100	...	610	...	490	...
Age-adjusted rate ³	668.7	...	694.7	...	685.9	...	706.9	...	644.1	...	649.4
All races, female¹												
All ages.	98,260	917.6	96,680	940.6	208,720	942.4	205,640	949.8	1,138,400	845.1	1,113,590	833.3
Under 1 year.									12,760	² 680.9	13,770	² 715.7
1–4 years	} 1,530	68.4	1,600	74.2	3,110	67.4	3,350	73.7	2,860	37.3	2,920	37.6
5–14 years									3,170	17.0	3,600	19.6
15–24 years	640	46.0	660	48.9	1,290	44.8	1,230	43.3	8,160	46.4	8,200	46.6
25–34 years	1,200	74.6	1,210	76.8	2,720	81.7	2,750	82.8	15,860	77.8	15,860	76.8
35–44 years	2,780	162.0	2,400	147.2	5,710	160.6	5,410	157.6	32,040	149.0	30,770	145.8
45–54 years	4,470	345.8	4,320	359.5	8,780	328.7	9,300	367.6	51,840	323.3	51,180	332.3
55–64 years	8,050	912.3	7,380	869.7	16,700	915.0	16,710	935.3	93,960	846.1	93,210	844.1
65–74 years	17,420	2,116.0	17,510	2,189.5	37,100	2,177.0	37,610	2,231.6	204,460	1,962.4	207,140	1,983.9
75–84 years	29,240	5,358.3	28,040	5,394.3	61,460	5,445.3	60,210	5,499.7	333,670	4,873.9	327,490	4,824.5
85 years and over.	32,890	15,646.2	33,540	16,900.6	71,780	16,516.7	68,970	16,509.6	379,260	14,415.1	359,190	14,321.8
Not stated	40	...	20	...	70	...	90	...	350	...	270	...
Age-adjusted rate ³	411.6	...	417.7	...	417.3	...	428.0	...	382.9	...	384.1
White												
All ages.	170,090	980.1	167,000	1,001.2	361,590	1,007.3	355,770	1,012.5	1,987,870	910.3	1,951,920	900.1
Under 1 year.									19,090	² 635.7	20,150	² 655.3
1–4 years	} 2,220	61.2	2,210	63.1	4,600	61.3	5,000	67.8	4,490	36.2	4,710	37.5
5–14 years									6,180	20.4	6,150	20.5
15–24 years	1,680	74.1	1,880	85.4	3,580	76.3	3,700	80.0	24,400	85.1	24,900	86.6
25–34 years	3,000	114.5	3,450	133.9	6,440	118.8	7,240	133.3	40,030	120.3	42,070	124.4
35–44 years	6,060	213.7	5,730	212.6	12,640	215.6	12,110	213.3	73,500	206.9	71,850	205.9
45–54 years	8,890	411.9	8,910	443.1	18,550	415.8	19,080	451.1	109,440	408.4	105,600	409.3
55–64 years	16,000	1,101.3	14,980	1,071.2	33,510	1,115.2	32,940	1,118.0	190,710	1,043.1	193,640	1,063.3
65–74 years	34,640	2,634.6	34,880	2,731.7	74,340	2,731.1	74,920	2,784.8	412,870	2,482.5	416,520	2,502.4
75–84 years	52,170	6,421.7	48,720	6,339.0	109,460	6,517.3	105,780	6,536.4	589,360	5,804.2	574,780	5,751.8
85 years and over.	45,360	17,048.1	46,210	18,444.0	98,370	17,878.1	94,820	17,980.5	517,070	15,555.7	490,980	15,381.6
Not stated	60	...	40	...	90	...	170	...	720	...	560	...
Age-adjusted rate ³	499.3	...	513.2	...	510.9	...	522.7	...	474.9	...	477.5

See footnotes at end of table.

Table 5. Provisional number of deaths and death rates, by age, race, and sex, and age-adjusted death rates by race and sex: United States, February 1995 and 1996, cumulative figures 1995 and 1996, and 12 months ending with February 1995 and 1996—Con.

[Data are provisional, estimated from a 10-percent sample of deaths. Age-specific rates on an annual basis per 100,000 population in specified group; age-adjusted rates per 100,000 U.S. standard million population; see [Technical notes](#). Because of rounding of estimates, figures may not add to totals. For method of computation and information on standard errors of the estimates, see [Technical notes](#)]

Age, race, and sex	February				January–February				12 months ending with February			
	1996		1995		1996		1995		1996		1995	
	Number	Rate	Number	Rate	Number	Rate	Number	Rate	Number	Rate	Number	Rate
White male												
All ages.	84,410	991.2	82,570	1,009.3	179,110	1,016.8	177,010	1,027.2	998,150	931.7	983,120	924.3
Under 1 year.	} 1,190	63.9	1,290	71.8	2,580	67.0	2,930	77.4	10,730	² 696.8	11,220	² 712.8
1–4 years									2,640	41.5	2,870	44.6
5–14 years									3,790	24.4	3,570	23.2
15–24 years	1,220	104.9	1,360	120.5	2,600	108.0	2,800	117.7	18,290	124.4	18,810	127.6
25–34 years	2,160	163.3	2,530	194.5	4,650	169.9	5,330	194.3	29,620	176.3	31,130	182.3
35–44 years	4,010	281.9	4,030	298.2	8,580	291.8	8,490	298.0	51,280	287.9	50,700	289.8
45–54 years	5,580	523.5	5,580	562.2	11,900	540.1	12,050	577.2	70,230	530.8	66,690	523.4
55–64 years	9,510	1,360.8	9,130	1,359.1	20,020	1,385.8	19,680	1,390.4	115,840	1,317.9	118,850	1,358.4
65–74 years	19,660	3,333.2	20,040	3,510.3	42,350	3,468.4	42,990	3,574.2	237,520	3,189.0	239,340	3,223.4
75–84 years	25,780	8,091.6	23,560	7,901.2	54,100	8,215.7	51,750	8,245.6	290,930	7,344.9	280,680	7,280.9
85 years and over.	15,250	20,518.7	15,010	21,644.5	32,260	20,991.1	30,890	21,175.5	166,790	18,090.0	158,880	17,752.0
Not stated	40	...	30	...	60	...	100	...	500	...	370	...
Age-adjusted rate ³	629.3	...	654.1	...	647.0	...	666.9	...	608.8	...	612.8
White female												
All ages.	85,680	969.5	84,430	993.3	182,480	998.2	178,750	998.3	989,720	889.7	968,800	876.8
Under 1 year.	} 1,030	58.3	920	53.9	2,020	55.3	2,070	57.3	8,370	² 572.1	8,930	² 594.9
1–4 years									1,850	30.6	1,840	30.1
5–14 years									2,390	16.2	2,580	17.7
15–24 years	460	41.7	510	47.6	980	42.9	900	39.8	6,100	43.7	6,090	43.5
25–34 years	840	64.8	920	72.1	1,800	67.0	1,910	71.0	10,410	63.2	10,940	65.4
35–44 years	2,050	145.0	1,690	125.7	4,060	138.9	3,620	127.9	22,230	125.5	21,150	121.6
45–54 years	3,300	302.1	3,330	327.0	6,650	294.1	7,030	328.7	39,200	289.0	38,910	297.9
55–64 years	6,500	862.1	5,850	805.1	13,490	865.0	13,260	866.1	74,870	788.7	74,790	790.4
65–74 years	14,980	2,066.2	14,840	2,102.0	31,990	2,131.3	31,930	2,146.7	175,350	1,905.9	177,180	1,921.7
75–84 years	26,390	5,344.3	25,160	5,348.6	55,360	5,421.9	54,030	5,452.9	298,440	4,819.0	294,110	4,791.6
85 years and over.	30,100	15,697.6	31,200	17,219.1	66,110	16,669.1	63,930	16,758.8	350,280	14,582.8	332,100	14,458.0
Not stated	20	...	10	...	30	...	70	...	220	...	190	...
Age-adjusted rate ³	393.0	...	395.9	...	398.5	...	403.3	...	362.8	...	364.1
Black												
All ages.	24,270	916.5	23,880	944.4	51,070	932.6	51,600	969.0	286,510	862.0	282,760	862.8
Under 1 year.	} 1,070	149.4	1,210	175.8	2,230	150.5	2,360	162.8	8,940	² 1,430.4	9,710	² 1,519.6
1–4 years									1,770	71.2	2,100	83.8
5–14 years									1,720	29.1	2,110	36.3
15–24 years	640	147.7	490	117.7	1,430	159.4	1,400	159.6	8,630	158.0	9,170	169.5
25–34 years	1,100	256.6	1,030	246.8	2,590	292.1	2,520	286.3	15,930	294.2	14,950	274.6
35–44 years	2,060	494.1	2,310	586.5	4,560	529.2	4,800	579.1	26,890	516.2	26,620	525.5
45–54 years	2,680	1,009.4	2,270	932.9	5,160	940.9	4,980	973.9	29,720	907.8	28,100	904.4
55–64 years	3,270	1,924.9	3,280	2,024.5	7,030	2,000.1	7,010	2,054.9	39,000	1,827.6	38,710	1,847.7
65–74 years	4,790	3,717.9	4,940	4,002.3	9,810	3,676.5	10,950	4,213.0	56,530	3,493.8	58,030	3,613.3
75–84 years	4,910	7,403.5	5,140	8,141.4	10,450	7,608.6	10,500	7,897.7	57,370	6,895.4	56,040	6,751.8
85 years and over.	3,710	16,722.4	3,200	15,336.1	7,770	16,927.5	7,060	16,057.4	39,790	14,364.6	37,050	14,879.5
Not stated	20	...	10	...	40	...	20	...	220	...	180	...
Age-adjusted rate ³	799.2	...	832.8	...	812.4	...	857.9	...	761.8	...	771.3
Black male												
All ages.	13,080	1,041.0	13,030	1,086.6	27,570	1,061.1	27,470	1,087.8	154,260	978.4	153,520	987.1
Under 1 year.	} 610	167.9	570	163.3	1,210	161.0	1,160	157.7	4,880	² 1,539.4	5,430	² 1,675.9
1–4 years									900	71.4	1,110	87.3
5–14 years									1,100	36.7	1,300	44.1
15–24 years	510	235.2	390	187.5	1,210	269.6	1,150	264.7	6,900	252.7	7,380	272.9
25–34 years	790	389.2	770	390.1	1,770	419.2	1,760	422.9	11,020	430.3	10,530	408.6
35–44 years	1,380	709.1	1,650	898.1	3,030	753.4	3,170	817.2	17,890	735.9	17,780	751.8
45–54 years	1,680	1,395.8	1,430	1,297.2	3,290	1,323.8	3,060	1,316.5	18,590	1,252.7	17,370	1,232.8
55–64 years	1,890	2,559.3	2,020	2,868.4	4,160	2,722.7	3,980	2,685.0	22,180	2,392.7	22,630	2,478.6
65–74 years	2,620	4,877.0	2,570	5,007.7	5,280	4,750.4	5,840	5,404.9	30,590	4,538.6	31,220	4,687.7
75–84 years	2,390	9,825.2	2,510	10,943.0	5,050	10,051.5	4,910	10,175.7	26,460	8,732.7	26,040	8,709.0
85 years and over.	1,200	18,697.3	1,100	18,151.0	2,570	19,354.3	2,430	19,029.2	13,640	17,050.0	12,620	17,287.7
Not stated	—	...	—	...	—	...	—	...	100	...	110	...
Age-adjusted rate ³	1,070.6	...	1,126.2	...	1,090.7	...	1,127.9	...	1,010.4	...	1,029.2

See footnotes at end of table.

Table 5. Provisional number of deaths and death rates, by age, race, and sex, and age-adjusted death rates by race and sex: United States, February 1995 and 1996, cumulative figures 1995 and 1996, and 12 months ending with February 1995 and 1996—Con.

[Data are provisional, estimated from a 10-percent sample of deaths. Age-specific rates on an annual basis per 100,000 population in specified group; age-adjusted rates per 100,000 U.S. standard million population; see [Technical notes](#). Because of rounding of estimates, figures may not add to totals. For method of computation and information on standard errors of the estimates, see [Technical notes](#)]

Age, race, and sex	February				January–February				12 months ending with February											
	1996		1995		1996		1995		1996		1995									
	Number	Rate	Number	Rate	Number	Rate	Number	Rate	Number	Rate	Number	Rate								
Black female																				
All ages.	11,190	804.1	10,850	816.2	23,500	816.6	24,130	861.9	132,250	756.9	129,240	750.5								
Under 1 year.	} 460	130.3	640	188.7	1,020	139.7	1,200	168.0	4,070	² 1,321.4	4,270	² 1,355.6								
1–4 years									880	71.9	980	79.3								
5–14 years									620	21.3	810	28.3								
15–24 years									130	60.0	110	52.8	220	49.1	250	57.0	1,730	63.3	1,790	66.1
25–34 years									310	137.3	250	113.6	830	177.7	750	161.7	4,910	172.1	4,420	154.1
35–44 years	680	305.8	660	314.1	1,530	332.9	1,640	370.9	8,990	323.6	8,850	327.7								
45–54 years	1,000	688.9	840	631.1	1,870	623.6	1,920	686.6	11,130	621.8	10,730	631.9								
55–64 years	1,380	1,437.0	1,260	1,375.6	2,870	1,444.5	3,020	1,570.7	16,820	1,393.5	16,080	1,360.4								
65–74 years	2,170	2,888.9	2,370	3,286.7	4,530	2,914.9	5,110	3,365.0	25,940	2,747.9	26,810	2,852.1								
75–84 years	2,520	6,000.8	2,620	6,517.9	5,400	6,197.4	5,580	6,587.8	30,910	5,843.1	29,990	5,647.8								
85 years and over.	2,510	15,918.6	2,100	14,183.9	5,200	15,939.7	4,630	14,841.0	26,150	13,274.1	24,430	13,880.7								
Not stated	20	...	10	...	40	...	20	...	120	...	70	...								
Age-adjusted rate ³	589.9	...	611.0	...	598.0	...	651.7	...	569.1	...	571.3								

... Category not applicable.

– Quantity zero.

¹Includes races other than white and black.

²Death rates (based on population estimates) differ from infant mortality rates (based on live births); for “Under 1 year” see [table 9](#) for infant mortality rates.

³For method of computation, see [Technical notes](#).

NOTES: Figures include all revisions received from the States. Cumulative and 12-month figures for the current year reflect revisions received for previous months, and figures for earlier years may differ from those previously published.

Table 6. Provisional number of deaths and death rates for 72 selected causes, Human immunodeficiency virus infection, and Alzheimer's disease: United States, February 1995 and 1996, cumulative figures 1995 and 1996, and 12 months ending with February 1995 and 1996

[Data are provisional, estimated from a 10-percent sample of deaths. Rates on an annual basis per 100,000 estimated population. Because of rounding of estimates, figures may not add to totals. For method of computation and information on standard errors of the estimates, see [Technical notes](#). For explanation of asterisks preceding cause-of-death categories, see [Technical notes](#)]

Cause of death (Based on the Ninth Revision, International Classification of Diseases, 1975)	February		January–February		12 months ending with February							
	1996		1995		1996		1995		1996		1995	
	Number	Rate	Number	Rate	Number	Rate	Number	Rate	Number	Rate	Number	Rate
All causes	198,000	943.6	194,000	965.9	419,000	967.5	414,000	977.9	2,314,000	879.1	2,271,000	869.5
Shigellosis and amebiasis	—	*	—	*	—	*	—	*	—	*	—	*
Certain other intestinal infections	70	*	60	*	180	0.4	100	*	720	0.3	670	0.3
Tuberculosis	120	0.6	140	0.7	220	0.5	310	0.7	1,280	0.5	1,490	0.6
Tuberculosis of respiratory system	110	0.5	120	0.6	200	0.5	240	0.6	1,030	0.4	1,100	0.4
Other tuberculosis	10	*	20	*	20	*	70	*	250	0.1	390	0.1
Whooping cough	—	*	—	*	—	*	—	*	10	*	—	*
Streptococcal sore throat, scarlatina, and erysipelas	—	*	—	*	—	*	—	*	10	*	—	*
Meningococcal infection	30	*	40	*	70	*	60	*	310	0.1	300	0.1
Septicemia	1,770	8.5	1,980	9.9	4,050	9.4	4,150	9.8	21,100	8.0	20,060	7.7
Acute poliomyelitis	—	*	—	*	—	*	—	*	—	*	—	*
Measles	—	*	—	*	—	*	—	*	—	*	10	*
Viral hepatitis	300	1.4	260	1.3	600	1.4	590	1.4	3,530	1.3	2,920	1.1
Syphilis	—	*	30	*	—	*	50	*	80	*	110	0.0
All other infectious and parasitic diseases ¹	3,290	15.7	3,690	18.4	7,450	17.2	8,280	19.6	48,180	18.3	47,300	18.1
Malignant neoplasms, including neoplasms of lymphatic and hematopoietic tissues	44,530	212.7	41,550	206.9	92,950	214.7	90,900	214.9	538,490	204.6	538,450	206.2
Malignant neoplasms of lip, oral cavity, and pharynx	610	2.9	710	3.5	1,310	3.0	1,490	3.5	7,790	3.0	8,010	3.1
Malignant neoplasms of digestive organs and peritoneum	10,200	48.7	9,550	47.5	21,680	50.1	20,800	49.2	126,130	47.9	126,560	48.5
Malignant neoplasms of respiratory and intrathoracic organs	13,310	63.6	12,200	60.7	27,330	63.1	26,470	62.6	155,790	59.2	154,290	59.1
Malignant neoplasm of breast	3,740	17.9	3,090	15.4	7,560	17.5	7,750	18.3	43,820	16.6	44,520	17.0
Malignant neoplasms of genital organs	4,710	22.5	4,940	24.6	9,890	22.8	10,390	24.5	60,300	22.9	61,860	23.7
Malignant neoplasms of urinary organs	1,710	8.2	1,740	8.7	4,000	9.2	3,930	9.3	23,160	8.8	22,030	8.4
Malignant neoplasms of all other and unspecified sites	5,470	26.1	5,110	25.4	11,290	26.1	10,890	25.7	66,000	25.1	67,080	25.7
Leukemia	1,880	9.0	1,330	6.6	3,750	8.7	3,120	7.4	20,250	7.7	19,500	7.5
Other malignant neoplasms of lymphatic and hematopoietic tissues	2,880	13.8	2,890	14.4	6,150	14.2	6,060	14.3	35,240	13.4	34,590	13.2
Benign neoplasms, carcinoma in situ, and neoplasms of uncertain behavior and of unspecified nature	670	3.2	790	3.9	1,390	3.2	1,620	3.8	8,160	3.1	7,920	3.0
Diabetes mellitus	4,880	23.3	4,940	24.6	10,580	24.4	10,680	25.2	58,240	22.1	55,620	21.3
Nutritional deficiencies	390	1.9	350	1.7	800	1.8	630	1.5	3,990	1.5	3,080	1.2
Anemias	350	1.7	430	2.1	590	1.4	840	2.0	4,030	1.5	4,370	1.7
Meningitis	70	*	70	*	140	0.3	220	0.5	700	0.3	920	0.4
Major cardiovascular diseases	82,230	392.8	81,400	405.3	174,010	401.9	172,330	407.3	944,200	358.7	929,610	355.9
Diseases of heart	63,710	304.4	62,680	312.1	135,270	312.4	132,910	314.2	733,230	278.5	722,100	276.5
Rheumatic fever and rheumatic heart disease	430	2.0	400	2.0	820	1.9	960	2.3	4,890	1.9	5,450	2.1
Hypertensive heart disease	2,450	11.7	2,030	10.1	4,820	11.1	4,330	10.2	24,980	9.5	23,600	9.0
Hypertensive heart and renal disease	260	1.2	170	0.8	500	1.1	450	1.1	2,390	0.9	2,330	0.9
Ischemic heart disease	41,530	198.4	41,660	207.4	87,910	203.0	87,730	207.4	477,590	181.4	477,090	182.7
Acute myocardial infarction	18,600	88.8	18,770	93.5	40,150	92.8	40,500	95.7	216,850	82.4	222,410	85.2
Other acute and subacute forms of ischemic heart disease	220	1.0	240	1.2	450	1.0	560	1.3	2,480	0.9	2,680	1.0
Angina pectoris	80	*	60	*	150	0.3	160	0.4	720	0.3	870	0.3
Old myocardial infarction and other forms of chronic ischemic heart disease	22,640	108.1	22,580	112.4	47,160	108.9	46,510	109.9	257,540	97.8	251,130	96.2
Other diseases of endocardium	1,480	7.1	1,350	6.7	2,940	6.8	2,820	6.7	15,640	5.9	14,490	5.5
All other forms of heart disease	17,560	83.9	17,060	84.9	38,280	88.4	36,620	86.5	207,730	78.9	199,140	76.2
Hypertension with or without renal disease	1,100	5.3	1,000	5.0	2,260	5.2	2,230	5.3	12,510	4.8	10,720	4.1
Cerebrovascular diseases	13,890	66.3	14,000	69.7	29,060	67.1	29,150	68.9	156,670	59.5	154,020	59.0
Intracerebral and other intracranial hemorrhage	2,040	9.7	1,680	8.4	4,180	9.7	4,010	9.5	21,870	8.3	21,530	8.2
Cerebral thrombosis and unspecified occlusion of cerebral arteries	960	4.6	1,280	6.4	2,220	5.1	2,620	6.2	13,000	4.9	14,890	5.7
Cerebral embolism	10	*	60	*	80	*	110	0.3	610	0.2	880	0.3

See footnotes at end of table.

Table 6. Provisional number of deaths and death rates for 72 selected causes, Human immunodeficiency virus infection, and Alzheimer's disease: United States, February 1995 and 1996, cumulative figures 1995 and 1996, and 12 months ending with February 1995 and 1996—Con.

[Data are provisional, estimated from a 10-percent sample of deaths. Rates on an annual basis per 100,000 estimated population. Because of rounding of estimates, figures may not add to totals. For method of computation and information on standard errors of the estimates, see [Technical notes](#). For explanation of asterisks preceding cause-of-death categories, see [Technical notes](#)]

Cause of death (Based on the Ninth Revision, International Classification of Diseases, 1975)	February		February		January–February		January–February		12 months ending with February		12 months ending with February	
	1995		1996		1995		1996		1995		1996	
	Number	Rate	Number	Rate	Number	Rate	Number	Rate	Number	Rate	Number	Rate
All other and late effects of cerebrovascular diseases430,433,435–438	10,880	52.0	10,990	54.7	22,580	52.1	22,410	53.0	121,180	46.0	116,720	44.7
Atherosclerosis440	1,460	7.0	1,570	7.8	2,930	6.8	3,210	7.6	16,120	6.1	16,770	6.4
Other diseases of arteries, arterioles, and capillaries441–448	2,060	9.8	2,160	10.8	4,480	10.3	4,820	11.4	25,670	9.8	26,010	10.0
Acute bronchitis and bronchiolitis466	50	*	80	*	110	0.2	120	0.3	540	0.2	420	0.2
Pneumonia and influenza480–487	8,030	38.4	8,750	43.6	17,740	41.0	17,220	40.7	80,680	30.6	77,360	29.6
Pneumonia480–486	7,920	37.8	8,650	43.1	17,410	40.2	17,060	40.3	80,050	30.4	77,040	29.5
Influenza487	110	0.5	100	*	330	0.8	170	0.4	640	0.2	320	0.1
Chronic obstructive pulmonary diseases and allied conditions490–496	9,500	45.4	10,010	49.8	20,430	47.2	20,940	49.5	103,040	39.1	100,050	38.3
Bronchitis, chronic and unspecified490–491	340	1.6	280	1.4	810	1.9	590	1.4	3,190	1.2	3,290	1.3
Emphysema492	1,580	7.5	1,780	8.9	3,350	7.7	3,780	8.9	16,990	6.5	17,450	6.7
Asthma493	250	1.2	630	3.1	730	1.7	1,200	2.8	5,040	1.9	5,230	2.0
Other chronic obstructive pulmonary diseases and allied conditions494–496	7,330	35.0	7,320	36.4	15,540	35.9	15,370	36.3	77,820	29.6	74,080	28.4
Ulcer of stomach and duodenum531–533	420	2.0	510	2.5	980	2.3	1,000	2.4	5,860	2.2	5,970	2.3
Appendicitis540–543	30	*	20	*	60	*	70	*	390	0.1	360	0.1
Hernia of abdominal cavity and intestinal obstruction without mention of hernia550–553,560	560	2.7	510	2.5	1,190	2.7	1,090	2.6	6,060	2.3	6,050	2.3
Chronic liver disease and cirrhosis571	1,970	9.4	2,250	11.2	4,180	9.7	4,550	10.8	24,720	9.4	26,000	10.0
Cholelithiasis and other disorders of gallbladder574–575	250	1.2	170	0.8	460	1.1	500	1.2	2,650	1.0	2,650	1.0
Nephritis and nephrotic syndrome, and nephrosis580–589	2,250	10.7	2,240	11.1	4,920	11.4	4,770	11.2	25,780	9.8	24,950	9.6
Acute glomerulonephritis and nephrotic syndrome580–581	20	*	10	*	30	*	40	*	270	0.1	230	0.1
Chronic glomerulonephritis, nephritis and nephropathy, not specified as acute or chronic, and renal sclerosis, unspecified582–583,587	160	0.8	100	*	340	0.8	320	0.8	1,360	0.5	1,700	0.7
Renal failure, disorders resulting from impaired renal function, and small kidney of unknown cause584–586,588–589	2,070	9.9	2,140	10.7	4,550	10.5	4,400	10.4	24,160	9.2	23,010	8.8
Infections of kidney590	70	*	80	*	170	0.4	150	0.3	750	0.3	940	0.4
Hyperplasia of prostate600	30	*	40	*	100	*	50	*	480	0.2	370	0.1
Complications of pregnancy, childbirth, and the puerperium630–676	–	*	40	*	30	*	70	*	280	0.1	360	0.1
Pregnancy with abortive outcome630–638	–	*	–	*	–	*	–	*	20	*	40	*
Other complications of pregnancy, childbirth, and the puerperium640–676	–	*	40	*	30	*	70	*	260	0.1	320	0.1
Congenital anomalies740–759	960	4.6	880	4.4	1,800	4.2	1,950	4.6	11,400	4.3	11,520	4.4
Certain conditions originating in the perinatal period760–779	930	4.4	1,050	5.2	2,040	4.7	2,240	5.3	13,210	5.0	14,090	5.4
Birth trauma, intrauterine hypoxia, birth asphyxia, and respiratory distress syndrome767–769	100	*	120	0.6	290	0.7	320	0.7	1,960	0.7	2,220	0.8
Other conditions originating in the perinatal period760–766,770–779	830	4.0	930	4.6	1,750	4.0	1,920	4.5	11,250	4.3	11,870	4.5
Symptoms, signs, and ill-defined conditions780–799	3,550	16.9	3,460	17.2	7,830	18.1	7,370	17.4	42,690	16.2	40,190	15.4
All other diseasesResidual	19,270	92.1	17,680	88.0	40,630	93.8	37,970	89.7	216,110	82.1	202,480	77.5
Accidents and adverse effectsE800–E949	7,040	33.6	6,320	31.5	14,550	33.6	13,820	32.7	90,530	34.4	88,440	33.9
Motor vehicle accidentsE810–E825	3,270	15.6	2,780	13.8	6,660	15.4	6,390	15.1	44,040	16.7	42,570	16.3
All other accidents and adverse effectsE800–E807,E826–E949	3,760	18.0	3,530	17.6	7,890	18.2	7,430	17.6	46,480	17.7	45,860	17.6
SuicideE950–E959	2,050	9.8	2,130	10.6	4,490	10.4	4,710	11.1	29,610	11.2	30,470	11.7
Homicide and legal interventionE960–E978	1,620	7.7	1,790	8.9	3,750	8.7	3,870	9.1	22,260	8.5	23,440	9.0
All other external causesE980–E999	220	1.0	240	1.2	390	0.9	460	1.1	2,210	0.8	2,630	1.0
Human immunodeficiency virus infection ²*042–*044	2,790	13.3	3,200	15.9	6,470	14.9	7,160	16.9	41,680	15.8	40,960	15.7
Alzheimer's disease331.0	1,850	8.8	1,800	9.0	4,250	9.8	3,820	9.0	20,900	7.9	18,830	7.2

– Quantity zero.

* Figure does not meet standards of reliability or precision; see [Technical notes](#).

0.0 Quantity more than zero but less than 0.05.

¹Includes data for deaths due to Human immunodeficiency virus infection (categories *042–*044) shown separately below; see [Technical notes](#).

²Included in All other infectious and parasitic diseases shown above.

NOTES: Figures include all revisions received from the States. Cumulative and 12-month figures for the current year reflect revisions received for previous months, and figures for earlier years may differ from those previously published.

Table 7. Provisional number of deaths and death rates for 16 selected subcategories of Malignant neoplasms, including neoplasms of lymphatic and hematopoietic tissues: United States, February 1995 and 1996, cumulative figures 1995 and 1996, and 12 months ending with February 1995 and 1996

[Data are provisional, estimated from a 10-percent sample of deaths. Rates on an annual basis per 100,000 estimated population. Because of rounding of estimates, figures may not add to totals. For method of computation and information on standard errors of the estimates, see [Technical notes](#)]

Cause of death (Based on the Ninth Revision, International Classification of Diseases, 1975)	February				January–February				12 months ending with February			
	1996		1995		1996		1995		1996		1995	
	Number	Rate	Number	Rate	Number	Rate	Number	Rate	Number	Rate	Number	Rate
Malignant neoplasms, including neoplasms of lymphatic and hematopoietic tissues ¹140–208	44,530	212.7	41,550	206.9	92,950	214.7	90,900	214.9	538,490	204.6	538,450	206.2
Malignant neoplasm of esophagus150	900	4.3	810	4.0	1,950	4.5	1,800	4.3	10,500	4.0	11,190	4.3
Malignant neoplasm of stomach151	1,000	4.8	990	4.9	2,210	5.1	2,260	5.4	13,760	5.2	13,550	5.2
Malignant neoplasms of colon, rectum, rectosigmoid junction, and anus153,154	4,630	22.1	4,440	22.1	9,830	22.7	9,460	22.4	56,190	21.3	58,350	22.3
Malignant neoplasm of pancreas157	2,160	10.3	2,040	10.2	4,370	10.1	4,460	10.5	27,290	10.4	26,610	10.2
Malignant neoplasms of trachea, bronchus, and lung162	12,820	61.2	11,760	58.5	26,430	61.0	25,430	60.1	150,660	57.2	148,810	57.0
Malignant melanoma of skin172	430	2.0	440	2.2	870	2.0	1,110	2.6	6,780	2.6	7,210	2.8
Malignant neoplasm of cervix uteri180	340	1.6	240	1.2	630	1.4	530	1.2	4,870	1.9	4,300	1.6
Malignant neoplasms of body of uterus and of uterus, part unspecified179,182	440	2.1	480	2.4	860	2.0	1,000	2.4	5,970	2.3	5,910	2.3
Malignant neoplasm of ovary183.0	990	4.7	1,150	5.7	2,350	5.4	2,330	5.5	13,620	5.2	13,830	5.3
Malignant neoplasm of prostate185	2,800	13.4	2,950	14.7	5,700	13.1	6,220	14.7	34,020	12.9	35,920	13.8
Malignant neoplasm of bladder188	880	4.2	960	4.8	2,040	4.7	2,100	5.0	11,480	4.4	10,830	4.1
Malignant neoplasms of kidney and other and unspecified urinary organs189	830	4.0	780	3.9	1,950	4.5	1,830	4.3	11,680	4.4	11,190	4.3
Malignant neoplasms of brain and other and unspecified parts of nervous system191,192	1,060	5.1	1,000	5.0	2,070	4.8	1,910	4.5	11,700	4.4	12,050	4.6
Hodgkin's disease201	150	0.7	90	*	360	0.8	190	0.4	1,700	0.6	1,450	0.6
Malignant lymphoma other than Hodgkin's disease200,202	1,960	9.4	2,010	10.0	4,030	9.3	4,090	9.6	23,210	8.8	22,890	8.8
Multiple myeloma and other immunoproliferative neoplasms203	770	3.7	790	3.9	1,760	4.0	1,780	4.2	10,330	3.9	10,250	3.9

* Figure does not meet standards of reliability or precision; see [Technical notes](#).

¹Includes figures for subcategories not shown.

NOTES: Figures include all revisions received from the States. Cumulative and 12-month figures for the current year reflect revisions received for previous months, and figures for earlier years may differ from those previously published.

Table 8. Provisional number of deaths and death rates for firearm mortality: United States, February 1995 and 1996, cumulative figures 1995 and 1996, and 12 months ending with February 1995 and 1996

[Data are provisional, estimated from a 10-percent sample of deaths. Rates on an annual basis per 100,000 estimated population. Because of rounding of estimates, figures may not add to totals. For method of computation and information on standard errors of the estimates, see [Technical notes](#)]

Cause of death (Based on the Ninth Revision, International Classification of Diseases, 1975)	February				January–February				12 months ending with February			
	1996		1995		1996		1995		1996		1995	
	Number	Rate	Number	Rate	Number	Rate	Number	Rate	Number	Rate	Number	Rate
Injury by firearms.E922,E955.0–E955.4,E965.0–965.4,E970,E985.0–E985.4	2,470	11.8	2,630	13.1	5,820	13.4	5,910	14.0	35,470	13.5	38,040	14.6
Accident caused by firearm missileE922	70	*	150	0.7	230	0.5	300	0.7	1,300	0.5	1,620	0.6
Suicide by firearmsE955.0–E955.4	1,280	6.1	1,310	6.5	2,900	6.7	2,840	6.7	18,040	6.9	19,140	7.3
Homicide and legal intervention by firearms.E965.0–E965.4,E970	1,110	5.3	1,130	5.6	2,670	6.2	2,700	6.4	15,920	6.0	16,930	6.5
Injury by firearms, undetermined whether accidentally or purposely inflicted.E985.0–E985.4	10	*	40	*	20	*	70	*	200	0.1	350	0.1

* Figure does not meet standards of reliability or precision; see [Technical notes](#).

NOTES: Figures include all revisions received from the States. Cumulative and 12-month figures for the current year reflect revisions received for previous months, and figures for earlier years may differ from those previously published.

Table 9. Provisional number of deaths under 1 year and infant mortality rates, by age and for 10 selected causes: United States, February 1995 and 1996, cumulative figures 1995 and 1996, and 12 months ending with February 1995 and 1996

[Data are provisional, estimated from a 10-percent sample of deaths. Rates on an annual basis per 100,000 live births. Because of rounding of estimates, figures may not add to totals. For method of computation and information on standard errors of the estimates, see [Technical notes](#)]

Age and cause of death (Based on the Ninth Revision, International Classification of Diseases, 1975)	February		January–February				12 months ending with February					
	1996		1995		1996		1995		1996		1995	
	Number	Rate	Number	Rate	Number	Rate	Number	Rate	Number	Rate	Number	Rate
Total, under 1 year	2,300	741.4	2,400	804.7	4,700	746.3	5,100	799.2	28,900	747.6	31,100	785.9
Under 28 days	1,390	454.6	1,510	510.3	2,790	445.6	3,210	504.2	18,250	472.5	19,630	496.0
28 days–11 months	880	287.8	870	294.0	1,880	300.3	1,870	293.7	10,590	274.2	11,450	289.3
Certain gastrointestinal diseases.008–009,535,555–558	20	*	20	*	20	*	40	*	170	4.4	240	6.1
Pneumonia and influenza.480–487	60	*	40	*	80	*	70	*	370	9.6	450	11.4
Congenital anomalies740–759	510	166.8	500	169.0	950	151.7	1,110	174.3	6,010	155.6	6,750	170.6
Disorders relating to short gestation and unspecified low birthweight765	300	98.1	280	94.6	510	81.5	680	106.8	3,390	87.8	3,880	98.0
Birth trauma767	20	*	–	*	40	*	10	*	220	5.7	180	4.5
Intrauterine hypoxia and birth asphyxia768	30	*	10	*	100	*	80	*	490	12.7	520	13.1
Respiratory distress syndrome.769	40	*	90	*	140	22.4	190	29.8	1,170	30.3	1,460	36.9
Other conditions originating in the perinatal period.760–764,766,770–779	520	170.1	620	209.5	1,210	193.3	1,200	188.5	7,760	200.9	7,820	197.6
Sudden infant death syndrome798.0	210	68.7	230	77.7	520	83.1	530	83.2	2,900	75.1	3,370	85.2
All other causesResidual	540	176.6	600	202.8	1,080	172.5	1,160	182.2	6,360	164.7	6,410	162.0

* Figure does not meet standards of reliability or precision; see [Technical notes](#).

– Quantity zero.

NOTES: Figures include all revisions received from the States. Cumulative and 12-month figures for the current year reflect revisions received for previous months, and figures for earlier years may differ from those previously published.

Technical notes

Nature and sources of data

Data in this report are provisional unless otherwise specified and include only events occurring within the United States (50 States and the District of Columbia). Mortality data exclude fetal deaths. Data for the Commonwealth of Puerto Rico are not included in the U.S. totals.

Birth, death, and infant death figures in [tables 2](#) and [4](#) for each State are estimates by State of residence. These estimates are derived by applying adjustment ratios to the actual counts of certificates for all events occurring in the State and received in registration offices during a 1-month period regardless of date of the event. The adjustment ratios for each data year represent the observed relationship between final State occurrence and residence figures for the three most recent years for which final data were available and are expressed as a single ratio for each State. As in previous years, monthly State marriage and divorce figures represent the actual count of all events occurring in the State (State of occurrence) that were received in the registration offices during the 1-month period. Delay in the receipt of certificates in a registration office may result in a low State figure for a given month followed by a high figure for the month(s) in which the delayed records are received. Data for previous months and cumulative data include revised figures received from the States.

Figures for births, deaths, and infant deaths for California in [tables 2](#) and [4](#) contain adjustments for varying lengths of State reporting periods. Figures for Texas for all events shown in [tables 2–4](#) also are adjusted for varying lengths of State reporting periods. The figures for both States are adjusted by the ratio between the number of days in the data month and the number of days in the State reporting period. The adjusted figures are included in the U.S. totals shown elsewhere in this report.

U.S. totals for births, deaths, and infant deaths are based on the State estimates by State of residence and, therefore, in effect, exclude events to nonresidents of the United States. Events to nonresidents of the United States are included in

all marriage and divorce figures. The effect of excluding events to nonresidents from the U.S. totals is small.

Provisional totals for the United States include estimates for State data shown as not available. Provisional totals for births and marriages for the entire United States include adjustments for observed differences between provisional and final monthly figures.

Divorce figures include reported annulments. The monthly national divorce estimate is obtained by multiplying the total for the reporting areas by the ratio observed between the most recent final annual divorce total for the United States and the provisional total for the reporting areas combined.

Random variation—Although the counts in this report are not subject to sampling variability (except the Current Mortality Sample), they may be affected by random variation. When the number of events is small and the probability of such an event is small, considerable caution must be observed in interpreting the data. Such infrequent events may be assumed to follow a Poisson probability distribution. For this distribution a simple approximation may be used to estimate the random variation as follows:

If N is the number of events in the population and R is the corresponding rate, the chances are 19 in 20 that

$$1. N - 2\sqrt{N} \text{ and } N + 2\sqrt{N}$$

covers the “true” number of events.

$$2. R - 2 \frac{R}{\sqrt{N}} \text{ and } R + 2 \frac{R}{\sqrt{N}}$$

covers the “true” rate.

If the rate R_1 corresponding to N_1 events is compared with the rate R_2 corresponding to N_2 events, the difference between the two rates may be regarded as statistically significant at the 0.05 level if it exceeds

$$2 \sqrt{\frac{R_1^2}{N_1} + \frac{R_2^2}{N_2}}$$

Additional information on random variation in numbers of events, rates, and ratios may be found in the technical appendixes of *Vital Statistics of the United States, 1990, Volumes I and II*.

Rates

Rates are on an annual basis and, except for infant mortality rates, are per 1,000 or 100,000 estimated population residing in the United States. The populations used for computing these rates are furnished by the U.S. Bureau of the Census. Rates shown in this report beginning with 1992 were computed using populations based on the 1990 Census enumeration comparable to those used for final data. Monthly rates are based on populations estimated for the specific month. Year-to-date rates are averages of monthly rates that have been weighted by the number of days in the corresponding months. Rates for 12-month periods are the sum of events for the period per population estimated at the midpoint of the period.

Infant mortality rates are deaths under 1 year of age for the specified period (monthly, year-to-date, or 12-month period) per 1,000 or 100,000 live births. Births used for computing monthly and year-to-date infant mortality rates are adjusted for monthly variation in the number of births. Births used to compute 12-month rates do not contain this adjustment. Births used for computing infant mortality rates are not corrected for observed differences between provisional and final monthly figures as described earlier in “Nature and sources of data.” Because monthly infant mortality rates are based on relatively few events, they are highly variable. Therefore, comparisons of monthly infant mortality rates should be interpreted cautiously; see “[Random variation](#).”

Age-adjusted death rates are used to compare relative mortality risks across groups and over time. However, they should be viewed as constructs or indexes rather than as direct or actual measures of mortality risk. Statistically, they are weighted averages of the age-specific death rates, where the weights represent the fixed population proportions by age. See chapter 5 of an earlier report (1). The age-adjusted death rates presented in this report were computed by the direct method, that is, by applying age-specific death rates to the U.S. standard million population (2). See also chapter 10 of an earlier report (1). Age groups in [table 5](#) were used to compute the age-adjusted

rates shown in that table. It is important not to compare age-adjusted rates with crude rates.

Current Mortality Sample

The Current Mortality Sample (CMS) is a 10-percent systematic sample of death certificates drawn each month after the certificates are counted in the State registration offices. Deaths and death rates for the United States by age, race, sex, and cause are estimated based on the sample. Because of the additional time required to select and process the certificates, data based on the CMS are published 1 month after publication of the U.S. and State counts. Complete information concerning the underlying cause of death sometimes is not available when the sample is drawn. As a result estimates based on sample counts for certain causes are biased. Correction for bias is not made in this report.

Estimated numbers of deaths based on the sample were proportionately adjusted to be consistent with estimates based on the count of death certificates received in State registration offices.

HIV infection—Beginning with data for 1987, the National Center for Health Statistics introduced categories *042–*044 for classifying and coding Human immunodeficiency virus (HIV) infection. The asterisks before the categories indicate that these codes are not part of the

Ninth Revision, International Classification of Diseases. Deaths classified to these categories are included in All other infectious and parasitic diseases in the List of 72 Selected Causes of Death and are also shown separately at the bottom of table 6.

Sampling variability—Because the estimates of deaths and death rates presented in this report with the exception of total deaths and deaths under 1 year are based on a sample of death certificates, they are subject to sampling variability. The estimated relative standard error in the following table is a measure of the

Relative standard errors for estimated numbers of deaths from the Current Mortality Sample expressed as a percent of the estimate

Estimated number of deaths	Relative standard error of estimate (as percent)	
	170,000 estimated deaths each month	2,000,000 estimated deaths each year
10	94.9	94.9
20	67.1	67.1
50	42.4	42.4
100	30.0	30.0
200	21.2	21.2
500	13.4	13.4
1,000	9.5	9.5
2,000	6.7	6.7
5,000	4.2	4.2
10,000	2.9	3.0
20,000	2.0	2.1
50,000	1.1	1.3
100,000	0.6	0.9
200,000	0.6
500,000	0.4
1,000,000	0.2

sampling error of the estimated number of deaths (or of the estimated death rate) expressed as a percent of the estimate. The first column refers to monthly estimates; the second to annual; cumulative year-to-date totals fall between the two.

The chances are about 2 in 3 that the percent difference between an estimate and the result of a complete count is less than the percent shown. The chances are about 19 in 20 that the percent difference is less than twice the percent shown. A figure based on 100 or fewer estimated deaths has a relative standard error of 30 percent or more and is, therefore, considered unreliable. A rate based on 100 or fewer estimated deaths has been replaced by an asterisk.

Unless otherwise specified comparisons made in the text between death rates based on the CMS were statistically significant at the 0.05 level of significance. Lack of comment in the text about any two rates does not mean that the difference was tested and found not to be significant at this level.

References

1. Feinleib M, Zarate AO, eds. Reconsidering age adjustment procedures: Workshop proceedings. National Center for Health Statistics. Vital Health Stat 4(29). 1992.
2. Grove RD, Hetzel AM. Vital statistics rates in the United States, 1940–1960. Public Health Service. Washington: National Center for Health Statistics. 1968.

Suggested citation

National Center for Health Statistics. Births, marriages, divorces, and deaths for March 1996. Monthly vital statistics report; vol 45 no 3. Hyattsville, Maryland: Public Health Service. 1996.

Copyright information

All material appearing in this report is in the public domain and may be reproduced or copied without permission; citation as to source, however, is appreciated.

National Center for Health Statistics

Director
Edward J. Sondik, Ph.D.

Deputy Director
Jack R. Anderson

Division of Vital Statistics

Director
Mary Anne Freedman

**DEPARTMENT OF
HEALTH & HUMAN SERVICES**

Public Health Service
Centers for Disease Control and Prevention
National Center for Health Statistics
6525 Belcrest Road
Hyattsville, Maryland 20782

FIRST CLASS MAIL
POSTAGE & FEES PAID
PHS/NCHS
PERMIT NO. G-281

**OFFICIAL BUSINESS
PENALTY FOR PRIVATE USE, \$300**

To receive this publication regularly, contact the National Center for Health Statistics by calling 301-436-8500
E-mail: nchsquery@nch10a.em.cdc.gov
Internet: <http://www.cdc.gov/nchswwww/nchshome.htm>

DHHS Publication No. (PHS) 96-1120
6-0644 (9/96)