

## HIGHLIGHTS OF THE PRESCRIBING INFORMATION

These highlights do not include all the information needed to use Derma-Smoothe/FS<sup>®</sup> safely and effectively. See full prescribing information for Derma-Smoothe/FS<sup>®</sup>.

**Derma-Smoothe/FS<sup>®</sup> (fluocinolone acetonide) Topical Oil, 0.01% (Body Oil)**

**For topical use only**

**Initial U.S. Approval: 1988**

-----**RECENT MAJOR CHANGES**-----  
Indication and Usage, Pediatric Patients with Atopic Dermatitis (1.2)  
11/2007

-----**INDICATIONS AND USAGE**-----  
Derma-Smoothe/FS<sup>®</sup> is a corticosteroid indicated for the

- topical treatment of atopic dermatitis in adult patients (1.1)
- topical treatment of moderate to severe atopic dermatitis in pediatric patients 3 months and older for up to 4 weeks (1.2)

Limitations of Use:

- Apply the least amount to cover affected areas. Discontinue when disease is controlled. (1.3)
- Do not use in the diaper area. (1.3)
- Do not use on the face, axillae, or groin. (1.3, 6.2, 8.4)

-----**DOSAGE AND ADMINISTRATION**-----  
Derma-Smoothe/FS<sup>®</sup> is not for oral, ophthalmic, or intravaginal use.(2)

- Adult patients: Apply to affected areas 3 times daily. (2.1)
- Pediatric patients: Moisten skin and apply to affected areas twice daily for up to 4 weeks. (2.2)

-----**DOSAGE FORM AND STRENGTHS**-----

Derma-Smoothe/FS<sup>®</sup> (fluocinolone acetonide) Topical Oil,0.01% (Body Oil) is supplied in bottles containing 4 fluid ounces. (3)

-----**CONTRAINDICATIONS**-----  
None (4).

-----**WARNINGS AND PRECAUTIONS**-----

- Topical corticosteroids can produce reversible HPA axis suppression, Cushing's syndrome, hyperglycemia, and glucosuria. (5.1)
- Systemic absorption may require evaluation for hypothalamic-pituitary-adrenal (HPA) axis suppression. (5.1)
- Modify use should HPA axis suppression develop. (5.1)
- Potent corticosteroids, use on large areas, prolonged use or occlusive use may increase systemic absorption. (5.1)
- Local adverse reactions may include atrophy, striae irritation, acneiform eruptions, hypopigmentation, and allergic contact dermatitis and may be more likely with occlusive use or more potent corticosteroids (5.2,5.3,6.1)
- Children may be more susceptible to systemic toxicity from equivalent doses. (5.1,8.4)

-----**ADVERSE REACTIONS**-----

The most common adverse reactions (≥ 5%) were cough (20%), rhinorrhea (13%), pyrexia (10%), telangiectasia (7%), nasopharyngitis (7%), and hypopigmentation (7%).

**To report SUSPECTED ADVERSE REACTIONS, contact Hill Dermaceuticals, Inc. at 1-800-344-5707 or FDA at 1-800-FDA-1088 or [www.fda.gov/medwatch](http://www.fda.gov/medwatch).**

See 17 for **PATIENT COUNSELING INFORMATION** and FDA-approved patient labeling.

## FULL PRESCRIBING INFORMATION: CONTENTS \*

### 1 INDICATION AND USAGE

- 1.1 Adult Patients with Atopic Dermatitis
- 1.2 Pediatric Patients with Atopic Dermatitis
- 1.3 Limitations of Use

### 2 DOSAGE AND ADMINISTRATION

- 2.1 Adult Patients with Atopic Dermatitis
- 2.2 Pediatric Patients with Atopic Dermatitis

### 3 DOSAGE FORM AND STRENGTHS

### 4 CONTRAINDICATIONS

### 5 WARNINGS AND PRECAUTIONS

- 5.1 Hypothalamic-Pituitary-Adrenal Axis Suppression
- 5.2 Local Adverse Reactions with Topical Corticosteroids
- 5.3 Allergic Contact Dermatitis with Topical Corticosteroids
- 5.4 Concomitant Skin Infections
- 5.5 Use in Peanut-Sensitive Individuals

### 6 ADVERSE REACTIONS

- 6.1 Clinical Studies Experience: Evaluation of Facial Use in Pediatric Subjects
- 6.2 Clinical Studies Experience: Evaluation in Pediatric Subjects 3 months to 2 years old

### 8 USE IN SPECIFIC POPULATIONS

- 8.1 Pregnancy
- 8.3 Nursing Mothers
- 8.4 Pediatric Use

### 10. OVERDOSAGE

### 11. DESCRIPTION

### 12. CLINICAL PHARMACOLOGY

- 12.1 Mechanism of Action
- 12.3 Pharmacokinetics

### 13. NONCLINICAL TOXICOLOGY

- 13.1 Carcinogenesis, mutagenesis, impairment of fertility

### 16. HOW SUPPLIED / STORAGE AND HANDLING

### 17. PATIENT COUNSELING INFORMATION

- 17.1 Instructions

\* Sections or subsections omitted from the Full Prescribing Information are not listed.

## FULL PRESCRIBING INFORMATION

### 1 INDICATIONS AND USAGE

#### 1.1 Adult Patients with Atopic Dermatitis

Derma-Smoothe/FS<sup>®</sup> is indicated for the topical treatment of atopic dermatitis in adult patients.

#### 1.2 Pediatric Patients with Atopic Dermatitis

Derma-Smoothe/FS<sup>®</sup> is indicated for the topical treatment of moderate to severe atopic dermatitis in pediatric patients, 3 months and older for up to 4 weeks. Safety and effectiveness in pediatric patients younger than 3 months of age have not been established.

#### 1.3 Limitations of Use

Apply the least amount of Derma-Smoothe/FS<sup>®</sup> needed to cover the affected areas. As with other corticosteroids, Derma-Smoothe/FS<sup>®</sup> should be discontinued when control of disease is achieved. Contact the physician if no improvement is seen within 2 weeks.

Derma-Smoothe/FS should not be applied to the diaper area; diapers or plastic pants may constitute occlusive use.

Derma-Smoothe/FS should not be used on the face, axillae, or groin unless directed by the physician. Application to intertriginous areas should be avoided due to the increased risk of local adverse reactions. [*see Adverse Reactions (6) and Use in Specific Populations (8.4)*].

### 2 DOSAGE AND ADMINISTRATION

Derma-Smoothe/FS is not for oral, ophthalmic, or intravaginal use.

**The dosing of Derma-Smoothe/FS is different for adult and pediatric patients.**

#### 2.1 Adult Patients with Atopic Dermatitis

Apply Derma-Smoothe/FS as a thin film to the affected areas three times daily.

#### 2.2 Pediatric Patients with Atopic Dermatitis

Moisten skin and apply Derma-Smoothe/FS as a thin film to the affected areas twice daily for up to four weeks.

### 3 DOSAGE FORMS AND STRENGTHS

Derma-Smoothe/FS<sup>®</sup> (fluocinolone acetonide), Topical Oil, 0.01% (Body Oil) is supplied in bottles containing 4 fluid ounces.

### 4 CONTRAINDICATIONS

None

## 5 WARNINGS AND PRECAUTIONS

### 5.1 Hypothalamic-Pituitary-Adrenal Axis Suppression

Systemic absorption of topical corticosteroids can produce reversible hypothalamic-pituitary-adrenal (HPA) axis suppression with the potential for glucocorticosteroid insufficiency. Cushing's syndrome, hyperglycemia, and glucosuria can also be produced by systemic absorption of topical corticosteroids.

Because of the potential for systemic absorption, use of topical corticosteroids may require that patients be periodically evaluated for HPA axis suppression. The ACTH stimulation test may be helpful in evaluating patients for HPA axis suppression.

If HPA axis suppression is documented, an attempt should be made to withdraw the drug, to reduce the frequency of application, or to substitute a less potent corticosteroid. Recovery of HPA axis function is generally prompt upon discontinuation of topical corticosteroids.

Conditions which increase systemic absorption include the use of more potent corticosteroids, use over large surface areas, use over prolonged periods, and use of occlusive dressings. Manifestations of adrenal insufficiency may require supplemental systemic corticosteroids.

Children may be more susceptible to systemic toxicity from equivalent doses due to their larger skin surface to body mass ratios. [See *Use in Specific Populations* (8.4)]

### 5.2 Local Adverse Reactions with Topical Corticosteroids

Local adverse reactions may occur with use of topical corticosteroids and may be more likely to occur with occlusive use, prolonged use or use of higher potency corticosteroids. Some local adverse reactions may be irreversible. Reactions may include atrophy, striae, telangiectasias, burning, itching, irritation, dryness, folliculitis, acneiform eruptions, hypopigmentation, perioral dermatitis, allergic contact dermatitis, secondary infection, and miliaria. [See *Adverse Reactions* (6.1)]

### 5.3 Allergic Contact Dermatitis with Topical Corticosteroids

Allergic contact dermatitis to any component of topical corticosteroids is usually diagnosed by a *failure to heal* rather than a clinical exacerbation. Clinical diagnosis of allergic contact dermatitis can be confirmed by patch testing.

### 5.4 Concomitant Skin Infections

Concomitant skin infections should be treated with an appropriate antimicrobial agent. If the infection persists unchanged, Derma-Smothe/FS<sup>®</sup> should be discontinued until the infection has been adequately treated.

### 5.54 Use in Peanut-Sensitive Individuals

Physicians should use caution in prescribing Derma-Smothe/FS for peanut-sensitive individuals. [See *Description* (11)]

Should signs of hypersensitivity present (wheal and flare reactions, pruritus, or other manifestations), or should disease exacerbations occur, Derma-Smoothe/FS should be discontinued immediately and appropriate therapy instituted.

## 6 ADVERSE REACTIONS

Because clinical trials are conducted under widely varying conditions, adverse reaction rates observed in the clinical trials of a drug cannot be directly compared to rates in the clinical trials of another drug and may not reflect the rates observed in practice.

### 6.1 Clinical Studies Experience: Evaluation of Facial Use in Pediatric Subjects

An, open-label, study was conducted in 58 children with moderate to severe atopic dermatitis (2 to 12 years old) to evaluate the safety of Derma-Smoothe/FS<sup>®</sup> when applied to the face twice daily for 4 weeks. The following adverse reactions were reported:

**Incidence of Adverse Reactions (%)**  
N=58

Adverse Reaction (AR)*	# of subjects (%)	Day 14	Day 28**	Day 56***
Any AE	15 (26)	6 (10)	7 (12)	7 (12)
Telangiectasia	5 (9)	3 (5)	4 (7)	2 (4)
Erythema	3 (5)			3 (5)
Itching	3 (5)			3 (5)
Irritation	3 (5)			3 (5)
Burning	3 (5)			3 (5)
Hypopigmentation	2 (4)	2 (4)		
Shiny skin	1 (2)		1 (2)	
Secondary atopic dermatitis	1 (2)			1 (2)
Papules and pustules	1 (2)			1 (2)
Keratosis pilaris	1 (2)			1 (2)
Folliculitis	1 (2)		1 (2)	
Facial herpes simplex	1 (2)	1 (2)		
Acneiform eruption	1 (2)		1 (2)	
Ear infection	1 (2)		1 (2)	

\*The number of individual adverse reactions reported does not necessarily reflect the number of individual subjects, since one subject could have multiple reporting of an adverse reaction.

\*\*End of Treatment

\*\*\*Four Weeks Post Treatment

### 6.2 Clinical Studies Experience: Evaluation in Pediatric Subjects 3 months to 2 years old

An open-label safety study was conducted in 29 children to assess the HPA axis by ACTH stimulation testing following use of Derma-Smoothe/FS twice daily for 4 weeks. The following adverse reactions were reported in the study [See Use in Specific Populations (8.4)]:

**Adverse Reactions (%)**  
N=30\*

Adverse Reaction	# of subjects (%)
Diarrhea	1 (3)
Vomiting	1 (3)
Pyrexia	3 (10)
Abscess	1 (3)
Molluscum	1 (3)
Nasopharyngitis	2 (7)
URI	1 (3)
Otitis media	1 (3)
Cough	6 (20)
Rhinorrhea	4 (13)
Atopic dermatitis	1 (3)
Eczema	1 (3)
Hyperpigmentation	1 (3)
Hypopigmentation	2 (7)
Rash	1 (3)

\*Includes one subject who withdrew at Week 2

## 8 USE IN SPECIFIC POPULATIONS

### 8.1 Pregnancy

Pregnancy Category C: Corticosteroids have been shown to be teratogenic in laboratory animals when administered systemically at relatively low dosage levels. Some corticosteroids have been shown to be teratogenic after dermal application in laboratory animals.

There are no adequate and well-controlled studies in pregnant women on teratogenic effects from Derma-Smoothe/FS. Therefore, Derma-Smoothe/FS should be used during pregnancy only if the potential benefit justifies the potential risk to the fetus.

### 8.3 Nursing Mothers

Systemically administered corticosteroids appear in human milk and could suppress growth, interfere with endogenous corticosteroid production, or cause other untoward effects. It is not known whether topical administration of corticosteroids could result in sufficient systemic absorption to produce detectable quantities in human milk. Because many drugs are excreted in human milk, caution should be exercised when Derma-Smoothe/FS is administered to a nursing woman.

## 8.4 Pediatric Use

### 8.4.1 Systemic Adverse Reactions in Pediatric Patients

HPA axis suppression, Cushing's syndrome, and intracranial hypertension have been reported in children receiving topical corticosteroids. Manifestations of adrenal suppression in children include linear growth retardation, delayed weight gain, low plasma cortisol levels,

and **subnormal** response to ACTH stimulation. Manifestations of intracranial hypertension include bulging fontanelles, headaches, and bilateral papilledema.

Because of a higher ratio of skin surface area to body mass, children are at a greater risk for systemic adverse reactions than are adults when treated with topical corticosteroids. [See *Warnings and Precautions (5.1)*]

#### **8.4.2 Evaluation in Peanut-Sensitive Pediatric Subjects**

A clinical study was conducted to assess the safety of Derma-Smoothe/FS, which contains refined peanut oil, on subjects with known peanut allergies. The study enrolled 13 subjects with atopic dermatitis, 6 to 17 years of age. Of the 13 subjects, 9 were Radioallergosorbent Test (RAST) positive to peanuts and 4 had no peanut sensitivity (controls). The study evaluated the subjects' responses to both prick test and patch test utilizing peanut oil NF, Derma-Smoothe/FS and histamine/saline controls. Subjects were also treated with Derma-Smoothe/FS twice daily for 7 days. Prick test and patch test results for all 13 patients were negative to Derma-Smoothe/FS and the refined peanut oil. One of the 9 peanut-sensitive patients experienced an exacerbation of atopic dermatitis after 5 days of Derma-Smoothe/FS. The bulk peanut oil NF, used in Derma-Smoothe/FS is heated at 475°F for at least 15 minutes, which should provide for adequate decomposition of allergenic proteins. [See *Description (11)*]

#### **8.4.3 Evaluation in Pediatric Subjects 2 to 6 years old**

Open-label safety studies were conducted on 33 children (20 subjects ages 2 to 6 years, 13 subjects ages 7 to 12 years) with moderate to severe stable atopic dermatitis. Subjects were treated with Derma-Smoothe/FS twice daily for 4 weeks. Baseline body surface area involvement was 50% to 75% in 15 subjects and greater than 75% in 18 subjects. Morning pre-stimulation cortisol and post-ACTH stimulation cortisol levels were obtained in each subject at the beginning of the trial and at the end of 4 weeks of treatment. At the end of treatment, 4 out of 18 subjects aged 2 to 5 years showed low pre-stimulation cortisol levels (3.2 to 6.6 µg/dL; normal: cortisol > 7µg/dL) but all had normal responses to 0.25 mg of ACTH stimulation (cortisol > 18 µg/dL).

#### **8.4.4 Evaluation in Pediatric Subjects 3 months to 2 years old**

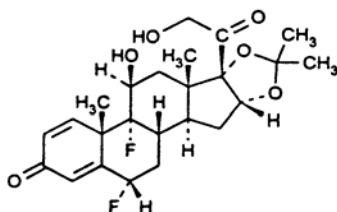
An open-label safety study was conducted in 29 children (7 subjects ages 3 to 6 months, 7 subjects ages > 6 to 12 months and 15 subjects ages > 12 months to 2 years of age) to assess the HPA axis by ACTH stimulation testing following use of Derma-Smoothe/FS twice daily for 4 weeks. All subjects had moderate to severe atopic dermatitis with disease involvement on at least 20% body surface area. Baseline body surface area involvement was 50% to 75% in 11 subjects and greater than 75% in 7 subjects. Morning pre-stimulation and post-ACTH stimulation cortisol levels were obtained in each subject at the beginning of the trial and at the end of 4 weeks of treatment. All subjects had normal responses to 0.125 mg of ACTH stimulation (cortisol > 18 µg/dL).

## **10. OVERDOSAGE**

Topically applied corticosteroids can be absorbed in sufficient amounts to produce systemic effects, including under conditions of normal use. [See *Warnings and Precautions (5.1)* and *Use in Specific Populations (8.4)*].

## 11. DESCRIPTION

Derma-Smoothe/FS<sup>®</sup> (fluocinolone acetonide), Topical Oil, 0.01% (Body Oil) contains fluocinolone acetonide [(6 $\alpha$ , 11 $\beta$ , 16 $\alpha$ )-6,9-difluoro-11,21-dihydroxy-16,17[(1-methylethylidene)bis(oxy)]-pregna-1,4-diene-3,20-dione, cyclic 16,17 acetal with acetone], a synthetic corticosteroid for topical dermatologic use. This formulation is also marketed as Derma-Smoothe/FS<sup>®</sup> (fluocinolone acetonide), Topical Oil, 0.01% (Scalp Oil) 0.01% fluocinolone acetonide for use with shower caps for treatment of scalp psoriasis in adults and as fluocinolone acetonide oil, 0.01% for treatment of chronic eczematous external otitis. Chemically, fluocinolone acetonide is C<sub>24</sub> H<sub>30</sub> F<sub>2</sub> O<sub>6</sub>. It has the following structural formula:



Fluocinolone acetonide in Derma-Smoothe/FS has a molecular weight of 452.50. It is a white crystalline powder that is odorless, stable in light, and melts at 270°C with decomposition; soluble in alcohol, acetone and methanol; slightly soluble in chloroform; insoluble in water.

Each gram of Derma-Smoothe/FS contains approximately 0.11 mg of fluocinolone acetonide in a blend of oils, which contains isopropyl alcohol, isopropyl myristate, light mineral oil, oleth-2, refined peanut oil NF and fragrances.

Derma-Smoothe/FS is formulated with 48% refined peanut oil NF. The peanut oil used in Derma-Smoothe/FS is tested for peanut proteins through amino acid analysis which can detect the quantity of amino acids to below 0.5 parts per million.

## 12. CLINICAL PHARMACOLOGY

### 12.1 Mechanism of Action

Like other topical corticosteroids, fluocinolone acetonide has anti-inflammatory, antipruritic, and vasoconstrictive properties. The mechanism of the anti-inflammatory activity of the topical steroids, in general, is unclear. However, corticosteroids are thought to act by the induction of phospholipase A<sub>2</sub> inhibitory proteins, collectively called lipocortins. It is postulated that these proteins control the biosynthesis of potent mediators of inflammation such as prostaglandins and leukotrienes by inhibiting the release of their common precursor arachidonic acid. Arachidonic acid is released from membrane phospholipids by phospholipase A<sub>2</sub>.

### 12.3 Pharmacokinetics

Topical corticosteroids can be absorbed from intact healthy skin. The extent of percutaneous absorption of topical corticosteroids is determined by many factors, including the product formulation and the integrity of the epidermal barrier. Occlusion, inflammation and/or other disease processes in the skin may increase percutaneous absorption. The use of pharmacodynamic endpoints for assessing the systemic exposure of topical corticosteroids may be necessary due to the fact that circulating levels are often below the level of detection. Once absorbed through the skin, topical corticosteroids are metabolized, primarily in the liver, and are then excreted by the kidneys. Some corticosteroids and their metabolites are also excreted in the bile.

Derma-Smoothe/FS is in the low to medium range of potency as compared with other topical corticosteroids in vasoconstrictor studies.

## 13 NONCLINICAL TOXICOLOGY

### 13.1 Carcinogenesis, mutagenesis, impairment of fertility:

Long-term animal studies have not been performed to evaluate the carcinogenic potential or the effect on fertility of Derma-Smoothe/FS. Studies have not been performed to evaluate the mutagenic potential of fluocinolone acetonide, the active ingredient in Derma-Smoothe/FS. Some corticosteroids have been found to be genotoxic in various genotoxicity tests (i.e. the *in vitro* human peripheral blood lymphocyte chromosome aberration assay with metabolic activation, the *in vivo* mouse bone marrow micronucleus assay, the Chinese hamster micronucleus test and the *in vitro* mouse lymphoma gene mutation assay).

## 16. HOW SUPPLIED / STORAGE AND HANDLING

Derma-Smoothe/FS is supplied in bottles containing 4 fluid ounces. It is labeled as Body Oil (NDC # 28105-150-04).

Storage:

Store at 25°C (68°-77°F); excursions permitted to 15-30°C (59-86°F) [See USP Controlled Room Temperature].

## 17. PATIENT COUNSELING INFORMATION

### 17.1 Instructions

- Derma-Smoothe/FS should be used as directed by the physician. It is for external use only. Avoid contact with the eyes. In case of contact, wash eyes liberally with water.
- Derma-Smoothe/FS should not be used for any disorder other than that for which it was prescribed.
- Patients should report any worsening of their skin condition to their physician promptly.



- Derma-Smoothe/FS should not be applied under occlusion unless directed by the physician. Derma-Smoothe/FS should not be applied to the diaper area as diapers or plastic pants may constitute occlusive use.
- Derma-Smoothe/FS should not be used on the face, axillae, or groin unless directed by the physician.
- As with other corticosteroids, therapy should be discontinued when control of disease is achieved. Contact the physician if no improvement is seen within 2 weeks.
- Do not use other corticosteroid-containing products while using Derma-Smoothe/FS without first consulting your physician.

Manufactured and Distributed by:  
Hill Dermaceuticals, Inc.  
Sanford, Florida 32773  
Code: 171A171  
Date: 12/2007