

## MIFEPREX® (mifepristone) Tablets, 200 mg For Oral Administration Only

Serious and sometimes fatal infections and bleeding occur very rarely following spontaneous, surgical, and medical abortions, including following Mifeprex\* use. Before prescribing Mifeprex, inform the patient about the risk of these serious events and discuss the MEDICATION GUIDE and the PATIENT AGREEMENT. Ensure that the patient knows whom to call and what to do, including going to an Emergency Room if none of the provided contacts are reachable, if she experiences sustained fever, severe abdominal pain, prolonged heavy bleeding, or syncope.

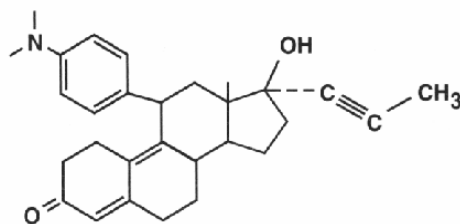
- Infection. Patients with serious bacterial infections and sepsis can present without fever, bacteremia or significant findings on pelvic examination following an abortion. No causal relationship between the use of Mifeprex and misoprostol and these events has been established. A high index of suspicion is needed to rule out sepsis (see WARNINGS).
- Bleeding. Prolonged heavy bleeding may be a sign of incomplete abortion or other complications and prompt medical or surgical intervention may be needed. Advise patients to seek immediate medical attention if they experience prolonged heavy vaginal bleeding (see WARNINGS).

Patients should be advised to take their MEDICATION GUIDE with them if they visit an emergency room or another health care provider who did not prescribe Mifeprex, so that provider will be aware that the patient is undergoing a medical abortion.

### DESCRIPTION

Mifeprex tablets each contain 200 mg of mifepristone, a synthetic steroid with antiprogestational effects. The tablets are light yellow in color, cylindrical and biconvex, and are intended for oral administration only. The tablets include the inactive ingredients colloidal silica anhydrous, corn starch, povidone, microcrystalline cellulose, and magnesium stearate.

Mifepristone is a substituted 19-nor steroid compound chemically designated as 11 $\beta$ -[p-(Dimethylamino)phenyl]-17 $\beta$ -hydroxy-17-(1-propynyl)estra-4,9-dien-3-one. Its empirical formula is C<sub>29</sub>H<sub>35</sub>NO<sub>2</sub>. Its structural formula is:



The compound is a yellow powder with a molecular weight of 429.6 and a melting point of 192-196°C. It is very soluble in methanol, chloroform and acetone and poorly soluble in water, hexane and isopropyl ether.

\* Mifeprex is a registered trademark of Danco Laboratories, LLC.

## CLINICAL PHARMACOLOGY

### Pharmacodynamic Activity

The anti-progestational activity of mifepristone results from competitive interaction with progesterone at progesterone-receptor sites. Based on studies with various oral doses in several animal species (mouse, rat, rabbit and monkey), the compound inhibits the activity of endogenous or exogenous progesterone. The termination of pregnancy results.

Doses of 1 mg/kg or greater of mifepristone have been shown to antagonize the endometrial and myometrial effects of progesterone in women. During pregnancy, the compound sensitizes the myometrium to the contraction-inducing activity of prostaglandins.

Mifepristone also exhibits antiglucocorticoid and weak antiandrogenic activity. The activity of the glucocorticoid dexamethasone in rats was inhibited following doses of 10 to 25 mg/kg of mifepristone. Doses of 4.5 mg/kg or greater in human beings resulted in a compensatory elevation of adrenocorticotrophic hormone (ACTH) and cortisol. Antiandrogenic activity was observed in rats following repeated administration of doses from 10 to 100 mg/kg.

### Pharmacokinetics and Metabolism

#### ***Absorption***

Following oral administration of a single dose of 600 mg, mifepristone is rapidly absorbed, with a peak plasma concentration of 1.98 mg/l occurring approximately 90 minutes after ingestion. The absolute bioavailability of a 20 mg oral dose is 69%.

#### ***Distribution***

Mifepristone is 98% bound to plasma proteins, albumin and  $\alpha_1$ -acid glycoprotein. Binding to the latter protein is saturable, and the drug displays nonlinear kinetics with respect to plasma concentration and clearance. Following a distribution phase, elimination of mifepristone is slow at first (50% eliminated between 12 and 72 hours) and then becomes more rapid with a terminal elimination half-life of 18 hours.

#### ***Metabolism***

Metabolism of mifepristone is primarily via pathways involving N-demethylation and terminal hydroxylation of the 17-propynyl chain. *In vitro* studies have shown that CYP450 3A4 is primarily responsible for the metabolism. The three major metabolites identified in humans are: (1) RU 42 633, the most widely found in plasma, is the N-monodemethylated metabolite; (2) RU 42 848, which results from the loss of two methyl groups from the 4-dimethylaminophenyl in position 11 $\beta$ ; and (3) RU 42 698, which results from terminal hydroxylation of the 17-propynyl chain.

#### ***Excretion***

By 11 days after a 600 mg dose of tritiated compound, 83% of the drug has been accounted for by the feces and 9% by the urine. Serum levels are undetectable by 11 days.

## ***Special Populations***

The effects of age, hepatic disease and renal disease on the safety, efficacy and pharmacokinetics of mifepristone have not been investigated.

## **Clinical Studies**

Safety and efficacy data from the U.S. clinical trials and from two French trials of mifepristone are reported below. The U.S. trials provide safety data on 859 women and efficacy data on 827 women with gestation durations of 49 days or less (dated from the first day of the last menstrual period). In the two French clinical trials, safety evaluable data are available for 1800 women, while efficacy information is available for 1681 of these women. Success was defined as the complete expulsion of the products of conception without the need for surgical intervention. The overall rates of success and failure, shown by reason for failure, for the U.S. and French studies appear in Table 1.

In the U.S. trials, 92.1% of the 827 subjects had a complete medical abortion, as shown in Table 1. In 52 women (6.3%) expulsion occurred within two days, and resulted from the action of mifepristone (600 mg) alone, unaided by misoprostol, an analog of prostaglandin E<sub>1</sub>. All other women without an apparent expulsion took a 400 µg dose of misoprostol two days after taking mifepristone. Many women (44.1%) in the U.S. trials expelled the products of conception within four hours after taking misoprostol and 62.8% experienced expulsion within 24 hours after the misoprostol administration. There were 65 women (7.9%) who received surgical interventions: 13 (1.6%) were medically indicated interventions during the study period, mostly for excessive bleeding; five (0.6%) interventions occurred at the patient's request; 39 women (4.7%) had incomplete abortions at the end of the study protocol; and eight (1.0%) had ongoing pregnancies at the end of the study protocol.

Women who participated in the U.S. trials reflect the racial and ethnic composition of American women. The majority of women (71.4%) were Caucasian, while 11.3% were African American, 10.9% were East Asian, and 4.7% were Hispanic. A small percentage (1.7%) belonged to other racial or ethnic groups. Women aged 18 to 45 were enrolled in the trials. Nearly two-thirds (66.0%) of the women were under 30 years old with a mean age of 27 years.

In the French trials, complete medical abortion occurred in 95.5% of the 1681 subjects, as shown in Table 1. In 89 women (5.3%), complete abortion occurred within two days of taking mifepristone (600 mg). About half of the women (50.3%) in the French trials expelled the products of conception during the first four hours immediately following administration of misoprostol and 72.3% experienced expulsion within 24 hours after taking misoprostol. In total, 4.5% of women in the French trials ultimately received surgical intervention for excessive bleeding, incomplete abortions, or ongoing pregnancies at the end of the protocol.

**Table 1**  
**Outcome Following**  
**Treatment with Mifepristone and Misoprostol in the U.S. and French Trials**

	U.S. Trials		French Trials	
	N	%	N	%
<b>Complete medical abortion</b>	<b>762</b>	<b>92.1</b>	<b>1605</b>	<b>95.5</b>
<u>Timing of expulsion</u>				
Before second visit	52	(6.3)	89	(5.3)
During second visit				
– less than 4 hrs after misoprostol	365	(44.1)	846	(50.3)
After second visit				
– greater than 4 hrs but less than 24 hrs after misoprostol	155	(18.7)	370	(22.0)
– greater than 24 hrs after misoprostol	68	(8.2)	145	(8.6)
Time of expulsion unknown	122	(14.8)	155	(9.2)
<b>Surgical intervention</b>	<b>65</b>	<b>7.9</b>	<b>76</b>	<b>4.5</b>
<u>Reason for surgery</u>				
Medically necessary interventions during the study period	13	(1.6)	NA	(NA)
Patient request	5	(0.6)	NA	(NA)
Treatment of bleeding during study	NA	(NA)	6	(0.3)
Incomplete expulsion at study end	39	(4.7)	48	(2.9)
Ongoing pregnancy at study end	8	(1.0)	22	(1.3)
<b>Total</b>	<b>827</b>	<b>100</b>	<b>1681</b>	<b>100</b>

*Note: Mifepristone 600 mg oral was administered on Day 1, misoprostol 400 µg oral was given on Day 3 (second visit).*

## **INDICATION AND USAGE**

Mifeprex is indicated for the medical termination of intrauterine pregnancy through 49 days' pregnancy. For purposes of this treatment, pregnancy is dated from the first day of the last menstrual period in a presumed 28 day cycle with ovulation occurring at mid-cycle. The duration of pregnancy may be determined from menstrual history and by clinical examination. Ultrasonographic scan should be used if the duration of pregnancy is uncertain, or if ectopic pregnancy is suspected.

Any intrauterine device ("IUD") should be removed before treatment with Mifeprex begins.

Patients taking Mifeprex must take 400 µg of misoprostol two days after taking mifepristone unless a complete abortion has already been confirmed before that time (see DOSAGE AND ADMINISTRATION).

Pregnancy termination by surgery is recommended in cases when Mifeprex and misoprostol fail to cause termination of intrauterine pregnancy (see PRECAUTIONS).

## **CONTRAINDICATIONS**

Administration of Mifeprex and misoprostol for the termination of pregnancy (the "treatment procedure") is contraindicated in patients with any one of the following conditions:

- Confirmed or suspected ectopic pregnancy or undiagnosed adnexal mass (the treatment procedure will not be effective to terminate an ectopic pregnancy) (see WARNINGS);
- IUD in place (see INDICATION AND USAGE);
- Chronic adrenal failure;
- Concurrent long-term corticosteroid therapy;
- History of allergy to mifepristone, misoprostol or other prostaglandin;
- Hemorrhagic disorders or concurrent anticoagulant therapy;
- Inherited porphyrias.

Because it is important to have access to appropriate medical care if an emergency develops, the treatment procedure is contraindicated if a patient does not have adequate access to medical facilities equipped to provide emergency treatment of incomplete abortion, blood transfusions, and emergency resuscitation during the period from the first visit until discharged by the administering physician.

Mifeprex also should not be used by any patient who may be unable to understand the effects of the treatment procedure or to comply with its regimen. Patients should be instructed to review the MEDICATION GUIDE and the PATIENT AGREEMENT provided with Mifeprex carefully and should be given a copy of the product label for their review. Patients should discuss their understanding of these materials with their health care providers, and retain the MEDICATION GUIDE for later reference (see PRECAUTIONS).

## **WARNINGS**

Patients must be monitored and undergo appropriate medical evaluation and intervention should any of the following serious adverse events occur following a spontaneous, surgical, or medical abortion, including following Mifeprex use:

### **1. Vaginal Bleeding**

Vaginal bleeding occurs in almost all patients during a medical abortion. Prolonged heavy bleeding (soaking through two thick full-size sanitary pads per hour for two consecutive hours) may be a sign of incomplete abortion or other complications and prompt medical or surgical intervention may be needed to prevent the development of hypovolemic shock (see BOXED WARNINGS). Patients should be counseled to seek immediate medical attention if they experience prolonged heavy vaginal bleeding following a medical abortion.

According to data from the U.S. and French trials, women should expect to experience vaginal bleeding or spotting for an average of nine to 16 days, while up to 8% of all subjects may experience some type of bleeding for 30 days or more. Bleeding was reported to last for 69 days in one patient in the French trials. In general, the duration of bleeding and spotting increased as the duration of the pregnancy increased.

Excessive vaginal bleeding usually requires treatment by uterotonics, vasoconstrictor drugs, curettage, administration of saline infusions, and/or blood transfusions. In the U.S. trials, 4.8% of subjects received administration of uterotonic medications and nine women (1.0%) received intravenous fluids. Vasoconstrictor drugs were used in 4.3% of all subjects in the French trials, and in 5.5% of women there was a decrease in hemoglobin of more than 2 g/dL. Blood transfusions were administered in one of 859 subjects in the U.S. trials and in two of 1800 subjects in the French trials. Since heavy bleeding requiring curettage occurs in about 1% of patients, special care should be given to patients with hemostatic disorders, hypocoagulability, or severe anemia.

### **2. Infection and Sepsis**

As with other types of abortion, cases of serious bacterial infection, including very rare cases of fatal septic shock, have been reported following the use of Mifeprex (see BOXED WARNINGS). No causal relationship between these events and the use of Mifeprex and misoprostol has been established. Physicians evaluating a patient who is undergoing a medical abortion should be alert to the possibility of this rare event. In particular, a sustained fever of 100.4°F or higher, severe abdominal pain, or pelvic tenderness in the days after a medical abortion may be an indication of infection. Atypical presentations of serious infection and sepsis, without fever, severe abdominal pain, or pelvic tenderness, but with significant leukocytosis, tachycardia, or hemoconcentration can occur.

### **3. Confirmation of Pregnancy Termination**

Patients should be scheduled for and return for a follow-up visit at approximately 14 days after administration of Mifeprex to confirm that the pregnancy is completely terminated and to assess the degree of bleeding. Termination can be confirmed by clinical examination or ultrasonographic scan. Lack of bleeding following treatment usually indicates failure; however, prolonged or heavy bleeding is not proof of a complete abortion. Medical abortion failures should be managed with surgical termination. Advise the patient whether you will provide such care or will refer her to another provider as part of counseling prior to prescribing Mifeprex.

#### **4. Ectopic Pregnancy**

Mifeprex is contraindicated in patients with a confirmed or suspected ectopic pregnancy since Mifeprex is not effective for terminating these pregnancies (see CONTRAINDICATIONS). Physicians should remain alert to the possibility that a patient who is undergoing a medical abortion could have an undiagnosed ectopic pregnancy since some of the expected symptoms of a medical abortion may be similar to those of a ruptured ectopic pregnancy. The presence of an ectopic pregnancy may have been missed even if the patient underwent ultrasonography prior to being prescribed Mifeprex.

#### **PRECAUTIONS**

##### **General**

Mifeprex is available only in single dose packaging. Administration must be under the supervision of a qualified physician (see DOSAGE AND ADMINISTRATION).

The use of Mifeprex is assumed to require the same preventive measures as those taken prior to and during surgical abortion to prevent rhesus immunization.

There are no data on the safety and efficacy of mifepristone in women with chronic medical conditions such as cardiovascular, hypertensive, hepatic, respiratory or renal disease; insulin-dependent diabetes mellitus; severe anemia or heavy smoking. Women who are more than 35 years of age and who also smoke 10 or more cigarettes per day should be treated with caution because such patients were generally excluded from clinical trials of mifepristone.

Although there is no clinical evidence, the effectiveness of Mifeprex may be lower if misoprostol is administered more than two days after mifepristone administration.

##### **Information for Patients**

Patients should be fully advised of the treatment procedure and its effects. Patients should be given a copy of the MEDICATION GUIDE and the PATIENT AGREEMENT. (Additional copies of the MEDICATION GUIDE and the PATIENT AGREEMENT are available by contacting Danco Laboratories at 1-877-4 Early Option) (1-877-432-7596). Patients should be advised to review both the MEDICATION GUIDE and the PATIENT AGREEMENT, and should be given the opportunity to discuss them and obtain answers to any questions they may have prior to receiving Mifeprex. Patients should be advised to take their MEDICATION GUIDE with them if they visit an emergency room or another health care provider who did not prescribe Mifeprex, so that provider will be aware that the patient is undergoing a medical abortion.

Each patient must understand:

- the necessity of completing the treatment schedule, including a follow-up visit approximately 14 days after taking Mifeprex;
- that vaginal bleeding and uterine cramping probably will occur;
- that prolonged heavy vaginal bleeding is not proof of a complete abortion;
- that if the treatment fails, there is a risk of fetal malformation;
- that medical abortion treatment failures are managed by surgical termination; and
- the steps to take in an emergency situation, including precise instructions and a telephone number that she can call if she has any problems or concerns.

Another pregnancy can occur following termination of pregnancy and before resumption of normal menses. Contraception can be initiated as soon as the termination of the pregnancy has been confirmed, or before the woman resumes sexual intercourse.

Patient information is included with each package of Mifeprex (see MEDICATION GUIDE).

### **Laboratory Tests**

Clinical examination is necessary to confirm the complete termination of pregnancy after the treatment procedure. Changes in quantitative human Chorionic Gonadotropin (hCG) levels will not be decisive until at least 10 days after the administration of Mifeprex. A continuing pregnancy can be confirmed by ultrasonographic scan.

The existence of debris in the uterus following the treatment procedure will not necessarily require surgery for its removal.

Decreases in hemoglobin concentration, hematocrit and red blood cell count occur in some women who bleed heavily. Hemoglobin decreases of more than 2 g/dL occurred in 5.5% of subjects during the French clinical trials of mifepristone and misoprostol.

Clinically significant changes in serum enzyme (serum glutamic oxaloacetic transaminase (SGOT), serum glutamic pyruvic transaminase (SGPT), alkaline phosphatase, gamma-glutamyltransferase (GT)) activities were rarely reported.

### **Drug Interactions**

Although specific drug or food interactions with mifepristone have not been studied, on the basis of this drug's metabolism by CYP 3A4, it is possible that ketoconazole, itraconazole, erythromycin, and grapefruit juice may inhibit its metabolism (increasing serum levels of mifepristone). Furthermore, rifampin, dexamethasone, St. John's Wort, and certain anticonvulsants (phenytoin, phenobarbital, carbamazepine) may induce mifepristone metabolism (lowering serum levels of mifepristone).

Based on *in vitro* inhibition information, coadministration of mifepristone may lead to an increase in serum levels of drugs that are CYP 3A4 substrates. Due to the slow elimination of mifepristone from the body, such interaction may be observed for a prolonged period after its administration. Therefore, caution should be exercised when mifepristone is administered with drugs that are CYP 3A4 substrates and have narrow therapeutic range, including some agents used during general anesthesia.

### **Carcinogenesis, Mutagenesis, Impairment of Fertility**

No long-term studies to evaluate the carcinogenic potential of mifepristone have been performed. Results from studies conducted *in vitro* and in animals have revealed no genotoxic potential for mifepristone. Among the tests carried out were: Ames test with and without metabolic activation; gene conversion test in *Saccharomyces cerevisiae* D4 cells; forward mutation in *Schizosaccharomyces pombe* P1 cells; induction of unscheduled DNA synthesis in cultured HeLa cells; induction of chromosome aberrations in CHO cells; *in vitro* test for gene mutation in V79 Chinese hamster lung cells; and micronucleus test in mice.

The pharmacological activity of mifepristone disrupts the estrus cycle of animals, precluding studies designed to assess effects on fertility during drug administration. Three studies have been



performed in rats to determine whether there were residual effects on reproductive function after termination of the drug exposure.

In rats, administration of the lowest oral dose of 0.3 mg/kg/day caused severe disruption of the estrus cycles for the three weeks of the treatment period. Following resumption of the estrus cycle, animals were mated and no effect on reproductive performance was observed. In a neonatal exposure study in rats, the administration of a subcutaneous dose of mifepristone up to 100 mg/kg on the first day after birth had no adverse effect on future reproductive function in males or females. The onset of puberty was observed to be slightly premature in female rats neonatally exposed to mifepristone. In a separate study in rats, oviduct and ovary malformations in female rats, delayed male puberty, deficient male sexual behavior, reduced testicular size, and lowered ejaculation frequency were noted after exposure to mifepristone (1 mg every other day) as neonates.

### **Pregnancy**

Mifepristone is indicated for use in the termination of pregnancy (through 49 days' pregnancy) and has no other approved indication for use during pregnancy.

### ***Teratogenic Effects***

#### Human Data

As of September 2000, over 620,000 women in Europe had taken mifepristone in combination with a prostaglandin to terminate pregnancy. Among these 620,000 women, about 415,000 received mifepristone together with misoprostol. As of May 2000 a total of 82 cases had been reported in which women with on-going pregnancies after using mifepristone alone or mifepristone followed by misoprostol declined to have a surgical procedure at that time. These cases are summarized in Table 2.

**Table 2**

**Reported Cases (as of May 2000) of On-going Pregnancies Not Terminated by Surgical Abortion at the End of Treatment with Mifepristone Alone or with Mifepristone-Misoprostol**

	<b>Mifepristone Alone</b>	<b>Mifepristone-Misoprostol</b>	<b>Total</b>
<b>Subsequently had surgical abortion</b>	<b>3</b>	<b>7</b>	<b>10</b>
<i>No abnormalities detected</i>	2	7	9
<i>Abnormalities detected (sirenomelia, cleft palate)</i>	1	0	1
<b>Subsequently resulted in live birth</b>	<b>13</b>	<b>13</b>	<b>26</b>
<i>No abnormalities detected at birth</i>	13	13	26
<i>Abnormalities detected at birth</i>	0	0	0
<b>Other/Unknown</b>	<b>26</b>	<b>20</b>	<b>46</b>
<b>Total</b>	<b>42</b>	<b>40</b>	<b>82</b>

Several reports in the literature indicate that prostaglandins, including misoprostol, may have teratogenic effects in human beings. Skull defects, cranial nerve palsies, delayed growth and psychomotor development, facial malformation and limb defects have all been reported after exposure during the first trimester.

Animal Data

Teratology studies in mice, rats and rabbits at doses of 0.25 to 4.0 mg/kg (less than 1/100 to approximately 1/3 the human exposure level based on body surface area) were carried out. Because of the antiprogesterone activity of mifepristone, fetal losses were much higher than in control animals. Skull deformities were detected in rabbit studies at approximately 1/6 the human exposure, although no teratogenic effects of mifepristone have been observed to date in rats or mice. These deformities were most likely due to the mechanical effects of uterine contractions resulting from decreased progesterone levels.

**Nonteratogenic Effects**

The indication for use of Mifeprex in conjunction with misoprostol is for the termination of pregnancy through 49 days' duration of pregnancy (as dated from the first day of the last menstrual period). These drugs together disrupt pregnancy by causing decidual necrosis, myometrial contractions and cervical softening, leading to the expulsion of the products of conception.

## **Nursing Mothers**

It is not known whether mifepristone is excreted in human milk. Many hormones with a similar chemical structure, however, are excreted in breast milk. Since the effects of mifepristone on infants are unknown, breast-feeding women should consult with their health care provider to decide if they should discard their breast milk for a few days following administration of the medications.

## **Pediatric Use**

Safety and effectiveness in pediatric patients have not been established.

## **ADVERSE REACTIONS**

The treatment procedure is designed to induce the vaginal bleeding and uterine cramping necessary to produce an abortion. Nearly all of the women who receive Mifeprex and misoprostol will report adverse reactions, and many can be expected to report more than one such reaction. About 90% of patients report adverse reactions following administration of misoprostol on day three of the treatment procedure. Those adverse events that occurred with a frequency greater than or equal to 1% in the U.S. and French trials are shown in Table 3.

Vaginal bleeding and uterine cramping are expected consequences of the action of Mifeprex as used in the treatment procedure. Following administration of mifepristone and misoprostol in the French clinical studies, 80 to 90% of women reported bleeding more heavily than they do during a heavy menstrual period (see WARNINGS, Vaginal Bleeding). Women also typically experience abdominal pain, including uterine cramping. Other commonly reported side effects were nausea, vomiting and diarrhea. Some adverse reactions reported during the four hours following administration of misoprostol were judged by women as being more severe than others: the percentage of women who considered any particular adverse event as severe ranged from 2 to 35% in the U.S. and French trials. After the third day of the treatment procedure, the number of reports of adverse reactions declined progressively in the French trials, so that by day 14, reports were rare except for reports of bleeding and spotting.

**Table 3****Type of Reported Adverse Events Following Administration of Mifepristone and Misoprostol in the U.S. and French Trials\* (percentages)**

	<u>U.S. Trials</u>	<u>French Trials</u>
Abdominal Pain (cramping)	96	NA
Uterine cramping	NA	83
Nausea	61	43
Headache	31	2
Vomiting	26	18
Diarrhea	20	12
Dizziness	12	1
Fatigue	10	NA
Back pain	9	NA
Uterine hemorrhage	5	NA
Fever	4	NA
Viral infections	4	NA
Vaginitis	3	NA
Rigors (chills/shaking)	3	NA
Dyspepsia	3	NA
Insomnia	3	NA
Asthenia	2	1
Leg pain	2	NA
Anxiety	2	NA
Anemia	2	NA
Leukorrhea	2	NA
Sinusitis	2	NA
Syncope	1	NA
Endometritis/Salpingitis/Pelvic Inflammatory Disease	1	NA
Decrease in hemoglobin greater than 2 g/dL	NA	6
Pelvic pain	NA	2
Fainting	NA	2

\* Only adverse reactions with incidence  $\geq 1\%$  are included.

**Postmarketing Experience**

The following adverse reactions have also been reported during post-approval use of Mifeprex and misoprostol. Because these reactions are reported voluntarily from a population of uncertain size, it is not always possible to reliably estimate their frequency or establish a causal relationship to drug exposure. No causal relationship between these events and Mifeprex and misoprostol has been established:

Allergic reaction (including rash, hives, itching), hypotension (including orthostatic), light-headedness, loss of consciousness, post-abort infection (including endomyometritis, parametritis), ruptured ectopic pregnancy, shortness of breath, and tachycardia (including racing pulse, heart palpitations, heart pounding).

## **OVERDOSAGE**

No serious adverse reactions were reported in tolerance studies in healthy non-pregnant female and healthy male subjects where mifepristone was administered in single doses greater than threefold that recommended for termination of pregnancy. If a patient ingests a massive overdose, she should be observed closely for signs of adrenal failure.

The oral acute lethal dose of mifepristone in the mouse, rat and dog is greater than 1000 mg/kg (about 100 times the human dose recommended for termination of pregnancy).

## **DOSAGE AND ADMINISTRATION**

Treatment with Mifeprex and misoprostol for the termination of pregnancy requires three office visits by the patient. Mifeprex should be prescribed only by physicians who have read and understood the prescribing information. Mifeprex may be administered only in a clinic, medical office, or hospital, by or under the supervision of a physician, able to assess the gestational age of an embryo and to diagnose ectopic pregnancies. Physicians must also be able to provide surgical intervention in cases of incomplete abortion or severe bleeding, or have made plans to provide such care through others, and be able to assure patient access to medical facilities equipped to provide blood transfusions and resuscitation, if necessary.

### **Day One: Mifeprex Administration**

Patients must read the MEDICATION GUIDE and read and sign the PATIENT AGREEMENT before Mifeprex is administered.

Three 200 mg tablets (600 mg) of Mifeprex are taken in a single oral dose.

### **Day Three: Misoprostol Administration**

The patient returns to the health care provider two days after ingesting Mifeprex. Unless abortion has occurred and has been confirmed by clinical examination or ultrasonographic scan, the patient takes two 200 µg tablets (400 µg) of misoprostol orally.

During the period immediately following the administration of misoprostol, the patient may need medication for cramps or gastrointestinal symptoms (see ADVERSE REACTIONS). The patient should be given instructions on what to do if significant discomfort, excessive vaginal bleeding or other adverse reactions occur and should be given a phone number to call if she has questions following the administration of the misoprostol. In addition, the name and phone number of the physician who will be handling emergencies should be provided to the patient.

## **Day 14: Post-Treatment Examination**

Patients will return for a follow-up visit approximately 14 days after the administration of Mifeprex. This visit is very important to confirm by clinical examination or ultrasonographic scan that a complete termination of pregnancy has occurred.

According to data from the U.S. and French studies, women should expect to experience vaginal bleeding or spotting for an average of nine to 16 days. Up to 8% of women may experience some type of bleeding for more than 30 days. Persistence of heavy or moderate vaginal bleeding at this visit, however, could indicate an incomplete abortion.

Patients who have an ongoing pregnancy at this visit have a risk of fetal malformation resulting from the treatment. Surgical termination is recommended to manage medical abortion treatment failures (see PRECAUTIONS, Pregnancy).

Adverse events, such as hospitalization, blood transfusion, ongoing pregnancy, or other major complications following the use of Mifeprex and misoprostol must be reported to Danco Laboratories. Please provide a brief clinical and administrative synopsis of any such adverse events in writing to:

Medical Director  
Danco Laboratories, LLC  
P.O. Box 4816  
New York, NY 10185  
1-877-4-Early Option (1-877-432-7596)

For immediate consultation 24 hours a day, 7 days a week with an expert in mifepristone, call Danco Laboratories at 1-877-4 Early Option (1-877-432-7596).

## **HOW SUPPLIED**

Mifeprex will be supplied only to licensed physicians who sign and return a Prescriber's Agreement. Distribution of Mifeprex will be subject to specific requirements imposed by the distributor, including procedures for storage, dosage tracking, damaged product returns and other matters. Mifeprex is a prescription drug, although it will not be available to the public through licensed pharmacies.

Mifeprex is supplied as light yellow, cylindrical, bi-convex tablets imprinted on one side with "MF." Each tablet contains 200 mg of mifepristone. Tablets are packaged in single dose blister packets containing three tablets and are supplied in individual cartons (National Drug Code 6487500103).

Store at 25°C (77°F); excursions permitted to 15-30°C (59-86°F) [see USP Controlled Room Temperature].

Manufactured for:  
Danco Laboratories, LLC  
P.O. Box 4816  
New York, NY 10185  
1-877-4 Early Option (1-877-432-7596)  
[www.earlyoptionpill.com](http://www.earlyoptionpill.com)



## MEDICATION GUIDE

### Mifeprex (MIF-eh-prex) (mifepristone)

Read this information carefully before taking Mifeprex and misoprostol. It will help you understand how the treatment works. This MEDICATION GUIDE does not take the place of talking with your health care provider (provider).

### What is Mifeprex?

**Mifeprex is used to end an early pregnancy.** It blocks a hormone needed for your pregnancy to continue. It is not approved for ending later pregnancies. Early pregnancy means it is 49 days (7 weeks) or less since your last menstrual period began. When you use Mifeprex (Day 1), you also need to take another medicine misoprostol, 2 days after you take Mifeprex (Day 3), to end your pregnancy. But, about 5-8 out of 100 women taking Mifeprex will need a surgical procedure to end the pregnancy or to stop too much bleeding.

### What is the most important information I should know about Mifeprex?

**What symptoms should I be concerned with?** Although cramping and bleeding are an expected part of ending a pregnancy, rarely, serious and potentially life-threatening bleeding, infections, or other problems can occur following a miscarriage, surgical abortion, medical abortion, or childbirth. Prompt medical attention is needed in these cases. If you have any questions, concerns, or problems, or if you are worried about any side effects or symptoms, you should contact your provider. Your provider's telephone number is \_\_\_\_\_.

### Be sure to contact your provider promptly if you have any of the following:

**Heavy Bleeding.** Contact your provider right away if you bleed enough to soak through two thick full-size sanitary pads per hour for two consecutive hours or if you are concerned about heavy bleeding. In about 1 out of 100 women, bleeding can be so heavy that it requires a surgical procedure (surgical abortion/D&C) to stop it.

**Severe Abdominal Pain or Fever.** In the days after treatment, if you have severe abdominal pain or a fever of 100.4°F or higher that lasts for more than 4 hours, you should contact your provider right away. Severe abdominal pain or fever may be a symptom of a serious infection or another problem (including an ectopic pregnancy, a pregnancy outside the womb).

**Take this MEDICATION GUIDE with you.** When you visit an emergency room or a provider who did not give you your Mifeprex, you should give them your MEDICATION GUIDE so that they understand that you are having a medical abortion with Mifeprex.

**What to do if you are still pregnant after Mifeprex with misoprostol treatment.** If you are still pregnant, your provider will talk with you about the other choices you have, including a surgical procedure to end your pregnancy. There is a chance that there may be birth defects if the pregnancy is not ended.

**Talk with your provider.** Before you take Mifeprex, you should read this MEDICATION GUIDE and sign a statement (PATIENT AGREEMENT). You and your provider should discuss the benefits and risks of your using Mifeprex.



## Who should not take Mifeprex?

Some women should not take Mifeprex. Do not take it if:

- It has been more than 49 days (7 weeks) since your last menstrual period began.
- You have an IUD. It must be taken out before you take Mifeprex.
- Your provider has told you that you have a pregnancy outside the uterus (ectopic pregnancy).
- You have problems with your adrenal glands (chronic adrenal failure).
- You take a medicine to thin your blood.
- You have a bleeding problem.
- You take certain steroid medicines.
- You cannot return for the next 2 visits.
- You cannot easily get emergency medical help in the 2 weeks after you take Mifeprex.
- You are allergic to mifepristone, misoprostol, or medicines that contain misoprostol, such as Cytotec or Arthrotec.

Tell your provider about all your medical conditions to find out if you can take Mifeprex. Also, tell your provider if you smoke at least 10 cigarettes a day.

## How should I take Mifeprex?

- **Day 1 at your provider's office:**
  - Read this MEDICATION GUIDE.
  - Discuss the benefits and risks of using Mifeprex to end your pregnancy.
  - If you decide Mifeprex is right for you, sign the PATIENT AGREEMENT.
  - After getting a physical exam, swallow 3 tablets of Mifeprex.
- **Day 3 at your provider's office:**
  - If you are still pregnant, take 2 misoprostol tablets.
  - Misoprostol may cause cramps, nausea, diarrhea, and other symptoms. Your provider may send you home with medicines for these symptoms.
- **About Day 14 at your provider's office:**
  - This follow-up visit is very important. You must return to the provider about 14 days after you have taken Mifeprex to be sure you are well and that you are not pregnant.
  - Your provider will check whether your pregnancy has completely ended. If it has not ended, there is a chance that there may be birth defects. If you are still pregnant, your provider will talk with you about the other choices you have, including a surgical procedure to end your pregnancy.

## What should I avoid while taking Mifeprex and misoprostol?

Do not take any other prescription or non-prescription medicines (including herbal medicines or supplements) at any time during the treatment period without first asking your provider about them because they may interfere with the treatment. Ask your provider about what medicines you can take for pain.

If you are breastfeeding at the time you take Mifeprex and misoprostol, discuss with your provider if you should stop breastfeeding for a few days.

## What are the possible and reasonably likely side effects of Mifeprex?

Cramping and bleeding are expected with this treatment. Usually, these symptoms mean that the treatment is working. But sometimes you can get cramping and bleeding and still be pregnant. This is why you must return to your provider on Day 3 and about Day 14. See “How should I take Mifeprex?” for more information on when to return to your provider. If you are not already bleeding after taking Mifeprex, you probably will begin to bleed once you take misoprostol, the medicine you take on Day 3. Bleeding or spotting can be expected for an average of 9–16 days and may last for up to 30 days. Your bleeding may be similar to, or greater than, a normal heavy period. You may see blood clots and tissue. This is an expected part of ending the pregnancy.

Other common symptoms of treatment include diarrhea, nausea, vomiting, headache, dizziness, back pain, and tiredness. These side effects lessen after Day 3 and are usually gone by Day 14. Your provider will tell you how to manage any pain or other side effects.

### **When should I begin birth control?**

You can become pregnant again right after your pregnancy ends. If you do not want to become pregnant again, start using birth control as soon as your pregnancy ends or before you start having sexual intercourse again.

\* \* \*

Medicines are sometimes prescribed for purposes other than those listed in a MEDICATION GUIDE. For more information, ask your provider for the information about Mifeprex that is written for health care professionals. Ask your provider if you have any questions.

This MEDICATION GUIDE has been approved by the U.S. Food and Drug Administration.

Rev 1: 11/15/04

**PATIENT AGREEMENT**  
Mifeprex (mifepristone) Tablets

1. I have read the attached MEDICATION GUIDE for using Mifeprex and misoprostol to end my pregnancy.
2. I discussed the information with my health care provider (provider).
3. My provider answered all my questions and told me about the risks and benefits of using Mifeprex and misoprostol to end my pregnancy.
4. I believe I am no more than 49 days (7 weeks) pregnant.
5. I understand that I will take Mifeprex in my provider's office (Day 1).
6. I understand that I will take misoprostol in my provider's office two days after I take Mifeprex (Day 3).
7. My provider gave me advice on what to do if I develop heavy bleeding or need emergency care due to the treatment.
8. Bleeding and cramping do not mean that my pregnancy has ended. Therefore, I must return to my provider's office in about 2 weeks (about Day 14) after I take Mifeprex to be sure that my pregnancy has ended and that I am well.
9. I know that, in some cases, the treatment will not work. This happens in about 5 to 8 women out of 100 who use this treatment.
10. I understand that if my pregnancy continues after any part of the treatment, there is a chance that there may be birth defects. If my pregnancy continues after treatment with Mifeprex and misoprostol, I will talk with my provider about my choices, which may include a surgical procedure to end my pregnancy.
11. I understand that if the medicines I take do not end my pregnancy and I decide to have a surgical procedure to end my pregnancy, or if I need a surgical procedure to stop bleeding, my provider will do the procedure or refer me to another provider who will. I have that provider's name, address and phone number.
12. I have my provider's name, address and phone number and know that I can call if I have any questions or concerns.
13. I have decided to take Mifeprex and misoprostol to end my pregnancy and will follow my provider's advice about when to take each drug and what to do in an emergency.
14. I will do the following:
  - contact my provider right away if in the days after treatment I have a fever of 100.4°F or higher that lasts for more than 4 hours or severe abdominal pain.
  - contact my provider right away if I have heavy bleeding (soaking through two thick full-size sanitary pads per hour for two consecutive hours).
  - take the MEDICATION GUIDE with me when I visit an emergency room or a provider who did not give me Mifeprex, so that they will understand that I am having a medical abortion with Mifeprex.
  - return to my provider's office in 2 days (Day 3) to check if my pregnancy has ended. My provider will give me misoprostol if I am still pregnant.
  - return to my provider's office about 14 days after beginning treatment to be sure that my pregnancy has ended and that I am well

Patient Signature: \_\_\_\_\_

Patient Name (print): \_\_\_\_\_

Date: \_\_\_\_\_

The patient signed the PATIENT AGREEMENT in my presence after I counseled her and answered all her questions. I have given her the MEDICATION GUIDE for mifepristone.

Provider's Signature: \_\_\_\_\_

Name of Provider (print): \_\_\_\_\_

Date: \_\_\_\_\_

After the patient and the provider sign this PATIENT AGREEMENT, give 1 copy to the patient before she leaves the office and put 1 copy in her medical record. Give a copy of the MEDICATION GUIDE to the patient.