

Guide for Interface Developers

Everything You Need to Know about EnergyPlus Input and Output

(to develop a user-friendly interface)

Date: April 5, 2009

TABLE OF CONTENTS

Introduction	1
Figure 1. EnergyPlus Input/Output Overview	1
Interface Expectations.....	2
Input Interface Attributes	2
Post-processing Interface Attributes	2
EnergyPlus Install Contents	3
Input Overview	5
General Input Rules	5
Input Data Dictionary.....	6
Rules specific to the Input Data Dictionary	6
Input Data File.....	6
Rules specific to Input Data file:	6
Input Details	7
IDD Conventions	7
Using the Input-Output Reference Document	13
Figure 2. Using IDFEditor to find the latest groups and objects for the Energy+.idd	13
Standard EnergyPlus Units	14
Table 1. Standard EnergyPlus Units	14
EnergyPlus Reports	15
Output	16
Figure 3. Example Chart from Standard Output File	17
Weather Data.....	18
Running EnergyPlus	19
Table 2. EnergyPlus Output Files.....	19
Table 3. EnergyPlus Errors	20
Table 4. Timings Comparison (EnergyPlus vs. BLAST).....	20

TABLE OF CONTENTS

Licensing.....	21
Appendix A. Simple IDF file.....	22

Introduction

This document is intended for developers who are creating user interfaces for EnergyPlus. It provides an overview of the essentials of the input-output structure of EnergyPlus and describes the parts of each in detail.

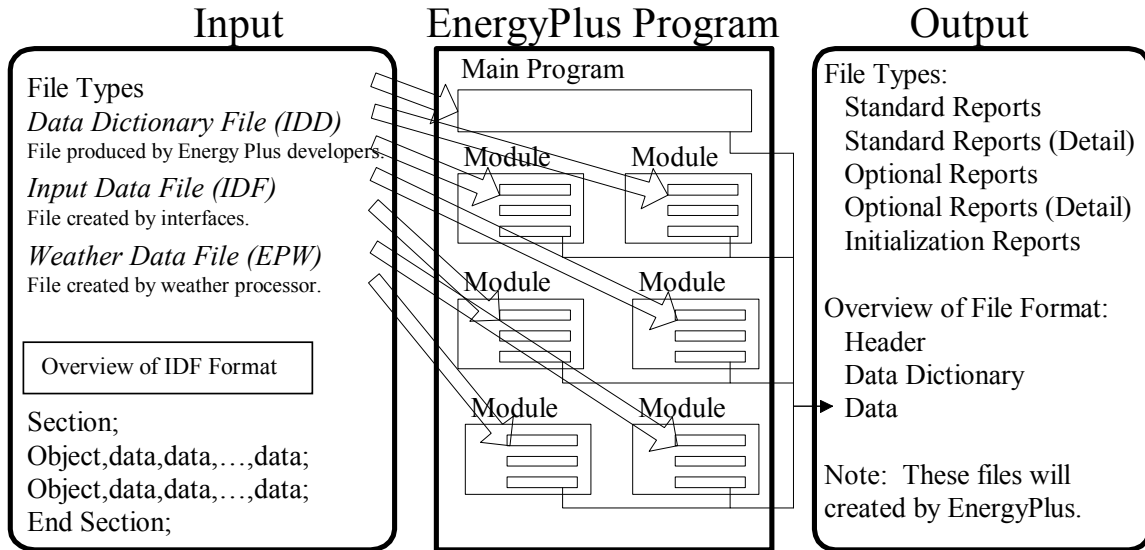


Figure 1. EnergyPlus Input/Output Overview

The diagram shown above should give the reader an overall picture of input-output in EnergyPlus. It can be seen as a linear process that includes the following steps:

- 1) The user enters building description (including internal space gains, HVAC arrangements, and Plant equipment properties) using the interface of their choice. In addition, the user specifies which non-default reports are desired and any optional variables from a predefined list of available simulation quantities.
- 2) The interface program writes the Input Data File (IDF) file, which includes the specification of any report items desired by the user.
- 3) EnergyPlus processes both the Input Data Dictionary (IDD) and the Input Data File (IDF) files with the "InputProcessor". The InputProcessor uses the specifications/rules defined in the IDD and interprets the IDF raw data. The InputProcessor is really quite "dumb" and only understands a few things about each field (alpha or numeric) qualified by certain key elements in the IDD (\ comments which are discussed later).
- 4) Each module in EnergyPlus has one or several routines (normally called "GetInput" routines) that obtain the information from the IDF file data. These subroutines decode the portion of the IDF file that is pertinent to the local module. These GetInput routines are more context sensitive than the InputProcessor and may perform further error detection. For example, the cooling coil module may read in the coil type and its associated parameters (number of rows, tube diameter, fin spacing, etc.).
- 5) EnergyPlus performs the simulation elements specified in the IDF. Output is generated as a continuous stream (for the most part) and must be interpreted into a more cohesive form by output processing. The user has control over which outputs are produced and when/how often.
- 6) EnergyPlus produces output as required by the user into one of the output files. These files can be readily processed into spreadsheet formats for graphing and other summarizing.

Interface Expectations

The input-output interfaces may be combined into a single program or may be available separately. The following attributes are expected from these interfaces.

Input Interface Attributes

The input interface agents will be expected to fulfill two main requirements:

- Ability to produce the input file for the simulation.
- Perform the consistency and value checks necessary to assure that the input file conforms to EnergyPlus requirements.

Additionally, the input interface agent might:

- Ability to warn users about potential output file size. It is expected that the data files generated by the EnergyPlus program will be significantly larger than the output files from its parent programs. As a result, users may be unaware that selecting too many reports could lead to enormous output files. It is recommended that some sort of checking be done to alert users when the term of the simulation and the number of reports selected eclipse some reasonable file size limit.
- Ability to perform parametric runs.

The method used by the input interface agent to accomplish these goals is left to the discretion of the interface developer.

Post-processing Interface Attributes

The post-processing agents will be expected to fulfill the main requirement:

- Ability to read all or selected output formats.

Additionally, a post-processing agent might:

- Ability to combine and summarize data (average, peak, total, etc.) and produce the various text and graphical reports requested by the user.
- Ability to handle multiple output files.

The method used by the post-processing agent to accomplish these goals is left to the discretion of the interface developer.

EnergyPlus Install Contents

EnergyPlus Interfaces will naturally need to access the installed EnergyPlus programs, library files, documentation. It will help to describe how EnergyPlus is installed (on a Windows™ computer). The EnergyPlus install is written using the WISE™ installation software.

The scheme of installing EnergyPlus includes a “root” directory/folder and all subsequent programs installed as part of the installation are child folders under the parent/root folder. Several optional components can be selected during install.

The basic (required) installation has crucial files installed in the parent folder – these include **EnergyPlus.exe**, **Energy+.idd** (the input data dictionary), **EPMacro.exe**. The basic installation also includes a child folder “DataSets” that contains the EnergyPlus “libraries”. As distributed, EnergyPlus includes several library files, formatted in the standard EnergyPlus IDF format. These include thermal material properties, moisture material properties, glass and other properties for windows, constructions (material sandwiches which describe walls, windows, roofs), fluid properties, locations, design day definitions, and basic schedule definitions. There, of course, may be additional data sets added as well as future datasets edited for selectable use from the EPMacro program. The Templates folder is also included in the basic install. Currently, the Templates folder contains documentation and the HVAC Template files. These files can be used somewhat “automatically” to produce HVAC loop structures for running with EnergyPlus.

Optional components of the EnergyPlus install: **Documentation**, **EP-Launch**, **IDFEditor**, **Sample Files**, **Weather Converter**, and other auxiliary type programs. All the components are selected by default; to not install them the user must “un-select” them individually. Highlights of several:

Documentation: The EnergyPlus package includes a comprehensive set of documents intended to help the user and others understand the EnergyPlus program, usage, and other appropriate information. All documents are created in PDF (Portable Document Format). There is a shortcut to the Documentation folder and the “main-menu” document is included. The main-menu document is a navigation aid to the remainder of the documents. We may want to make the documentation a non-optional component.

EP-Launch: The components of EP-Launch are installed in the parent directory (help files installed in the documentation directory). Because the basic EnergyPlus program runs as a console application, many beta users did not understand how to make the program execute. While the developers may be able to tailor the EnergyPlus executable to be more callable under the Windows™ platform, this is still a useful program. EP-Launch uses the EPL-Run.bat file and prepends several “set” commands that are used in the bat file. It creates the actual batch file for the run as “RunEP.bat” and then calls the operating system to execute the file. Having the EPL-Run.bat file as external to the EP-Launch program means that others may tailor the batch file more appropriately to how things are run though this may not be preserved with a future EnergyPlus install. EP-Launch can also execute several utility programs from the “Utilities” tab.

IDFEditor: The IDFEditor is the simple editor that is distributed with EnergyPlus. As an interface, it is crude. However, it gets the job done. It uses the IDD and then reads and/or creates an IDF file. The objects are shown in the groups (see \group discussion below) and, when an existing file is used, will display how many of an object is found in the IDF. This program is installed in the Parent \ PreProcess \ IDFEditor folder.

Sample Files: The sample files include several IDF files along with the files the installed version of EnergyPlus created using these files. There are several possible child folders here, including the Misc child folder that will contain all the development sample files – but without having been run for the install. These files are installed in the Parent \ ExampleFiles folder and any appropriate child folders under that.

Weather Converter: The WeatherConverter program can process raw weather data in several formats into the EnergyPlus weather data format (epw). In addition, the WeatherConverter program can be used to generate a simple report of the weather data as well as produce a .csv file of the format. The .csv (comma separated variable) format can easily be imported into spread sheet programs or other tables. This program is installed in the Parent \ PreProcess \ WeatherConverter folder. The WeatherConverter also has a DLL file which could be used directly by an external interface.

BLAST Translator: The BLAST translator program can be used to convert a BLAST input file into a format that can be executed from EnergyPlus. Extensive system translation is not done with this program – mostly geometry and other space gain elements as well as zone oriented (i.e. People) schedules. If the BLAST input file contains thermostatic controls in the zones, then the EnergyPlus IDF file will include a purchased-air solution of that BLAST input file. This program is no longer part of the EnergyPlus install but is available with each new release.

DOE-2 Translator: The DOE-2 translator program is similar to the BLAST Translator program but for DOE-2 files. DOE-2 translator output must be processed by the EPMacro program prior to running in EnergyPlus (the EP-Launch program/EPL-Run procedure does this automatically for all “.imf” files). This program is no longer part of the EnergyPlus install but is available with each new release.

Input Overview

The general structure of the input files for EnergyPlus is plain text. Fields are comma delimited and each "line" is terminated with a semicolon. This allows for a very rudimentary input processor that can be instantly flexible to developer's needs. However, it puts more burdens on the EnergyPlus developers to process the input information, supply defaults as needed, and perform validity checks. Guidelines were established for the input:

- Input will be a flat ASCII file with comma-delimited columns and each "line" (where each line can run over several physical file records) terminated with a semicolon.
- Input should be "readable", "editable", "simply parsed with few value checks or consistency checks".
- Input, to the extent possible, should be easily maintainable and extendable.
- Input will be "object based".
- Definitions in a data dictionary will define the input. The data dictionary should be self-documenting.
- All input units will be metric (SI). Conversions from "user units" will be done in the interface agents.

Two input files are necessary for the input processing. The first is the "data dictionary" which will specify the requirements for each item. The EnergyPlus Input Processor uses these requirements to process the "input data file" and report any anomalies found. Both input files have similar structures: 1) Sections – single lines/commands, which may help group the simulation input for readability and 2) Classes/Objects – data attributes for the simulation. Classes are the term used in the data dictionary – each class will specify the kind of data (alpha or numeric) that will be included in the simulation input. Objects are instances of these classes and appear in the IDF with appropriate data.

General Input Rules

The following rules apply to both the Input Data Dictionary and the Input Data File.

- The initial line of a definition or input MUST have a comma or semicolon.
- Fields do not extend over line boundaries. Usually, if a comma or (as appropriate) semicolon is not the last field value on a line, one will be inserted. Of course, several fields may appear on a single line as long as they are comma separated.
- Commas delimit fields – therefore, no fields can have embedded commas. No error will occur but you won't get what you want.
- Blank lines are allowed.
- The comment character is an exclamation "!". Anything on a line after the exclamation is ignored.
- Input records can be up to 500 characters in length. If you go over that, no error will occur but you won't get what you want.
- Each Section and Class/Object keyword can be up to 100 characters in length. Embedded spaces are allowed, but are significant (if you have 2 spaces in the section keyword – you must have 2 when you write the object keyword).
- Each Alpha string (including Section and Class/Object keywords) is mapped to UPPER case during processing, unless the "retaincase" flag marks the field in the IDD. Get routines from the EnergyPlus code that use the Section and Object keywords automatically map to UPPER case for finding the item. The primary drawback with this is that error messages coming out of the input processor will be in UPPER case and may not appear exactly as input.

- Special characters, such as tabs, should NOT be included in the file. However, tabs can be accommodated and are turned into spaces.

Input Data Dictionary

The input data dictionary specifies the “definitions” for each line that will be processed in the input data file.

Structure in the input data dictionary allows for descriptions that may be useful for interface developers. The Input Processor ignores everything but the essentials for getting the “right stuff” into the program. Developers have been (and will continue to be) encouraged to include comments and other documentation in the IDD.

Internal to the data dictionary (using special “comment” characters) is a structured set of conventions for including information on each object. This is shown in section on Input Details below.

Rules specific to the Input Data Dictionary

In addition to the rules for both files (listed above), the IDD also has the limitation:

- Duplicate Section names and Duplicate Class names are not allowed. That is, the first class of an item named X will be the one used during processing. Error messages will appear if you try to duplicate definitions.

Input Data File

This is the only file that EnergyPlus uses to create the building simulation. The input is order-independent; data can appear in any order and will be retrieved and sorted as necessary by the EnergyPlus simulation modules. In addition, EnergyPlus allocates everything dynamically, so there are no limitations as to number of zones, surfaces, etc.

All numbers can be flexibly input and are processed into single precision variables (i.e. 1.0, 1.000, 1, .1E+1 are all processed equally).

Rules specific to Input Data file:

- Each Alpha string in the input data file can be up to 100 characters in length. Anything beyond that is truncated.

Input Details

This document does not cover the input “classes” in detail. For details on each class and examples of both input and output resulting from that class/object, please view the [Input Output Reference](#) document. In this document, we will show the “conventions” used in the IDD and provide limited examples for illustration purposes. Even the list of objects is dynamic, so we give you a method to see them from the IDFEditor.

An intelligent editor (IDFEditor) has been written and can be used as an illustration of how the comments in the IDD might be used by Interface Developers to guide their developments. IDFEditor is described in the [Getting Started](#) document.

A full example of a very simple IDF is included in Appendix A to this document.

IDD Conventions

The following is a basic description of the structure of the IDD (it’s actually taken directly from the IDD file). As noted within, ! signifies a comment character as does the \. \ has also been adopted as a convention for including more specific comments about each field in an object. These have been used with success in the IDFEditor and it is hoped the flexibility will provide other interface developers with useful information. Not all fields are filled in as of yet in the existing IDD – that will come over time.

```

!IDD_Version VERSION
! *****
!
! Object Description
! -----
! To define an object (a record with data), develop a key word that is unique
! Each data item to the object can be A (Alphanumeric string) or N (numeric)
! Number each A and N. This will show how the data items will be put into the
! arrays that are passed to the Input Processor "Get" (GetObjectItem) routines.
! All alpha fields are limited to 100 characters. Numeric fields should be
! valid numerics (can include such as 1.0E+05) and are placed into double
! precision variables.
!
! NOTE: Even though a field may be optional, a comma representing that field
! must be included (unless it is the last field in the object). Since the
! entire input is "field-oriented" and not "keyword-oriented", the EnergyPlus
! Input Processor must have some representation (even if blank) for each
! field.
!
! Object Documentation
! -----
! In addition, the following special comments appear one per line and
! most are followed by a value. Comments may apply to a field or the object
! or a group of objects.
!
! Field-level comments:
!
! \field Name of field
! (should be succinct and readable, blanks are encouraged)
!
! \note Note describing the field and its valid values
!
! \required-field To flag fields which may not be left blank
! (this comment has no "value")
!
! \units Units (must be from EnergyPlus standard units list)
! EnergyPlus units are standard SI units

```

```

!
! \ip-units      IP-Units (for use by input processors with IP units)
!               This is only used if the default conversion is not
!               appropriate.
!
! \minimum      Minimum that includes the following value
!
! \minimum>     Minimum that must be > than the following value
!
! \maximum      Maximum that includes the following value
!
! \maximum<     Maximum that must be < than the following value
!
! \default      Default for the field (if N/A then omit entire line)
!
! \deprecated   This field is not really used and will be deleted from the
!               object.
!               The information is gotten internally within the program.
!
! \autosizable  Flag to indicate that this field can be used with the Auto
!               Sizing routines to produce calculated results for the
!               field.  If a value follows this, then that will be used
!               when the "Autosize" feature is flagged.  To trigger
!               autosizing for a field, enter Autosize as the field's
!               value.  Only applicable to numeric fields.
!
! \autocalculatable Flag to indicate that this field can be automatically
!               calculated.  To trigger auto calculation for a field, enter
!               Autocalculate as the field's value.  Only applicable to
!               numeric fields.
!
! \type         Type of data for the field -
!               integer
!               real
!               alpha      (arbitrary string),
!               choice      (alpha with specific list of choices, see
!                           \key)
!               object-list (link to a list of objects defined elsewhere,
!                           see \object-list and \reference)
!
! \retaincase   Retains the alphabetic case for alpha type fields
!
! \key          Possible value for "\type choice" (blanks are significant)
!               use multiple \key lines to indicate all valid choices
!
! \object-list  Name of a list of user-provided object names that are valid
!               entries
!               for this field (used with "\reference")
!               see Zone and BuildingSurface:Detailed objects below for
!               examples.
!               ** Note that a field may have only one \object-list reference.
!               ** If it must reference more than one object-list, then a
!               composite object-list should be created which contains all
!               valid references.
!
! \reference    Name of a list of names to which this object belongs
!               used with "\type object-list" and with "\object-list"
!               see Zone and BuildingSurface:Detailed objects below for
!               examples:
!
!               Zone,
!               Al , \field Name
!               \type alpha

```

```

!                                     \reference ZoneNames
!
!                                     BuildingSurface:Detailed,
!                                     A4 , \field Zone Name
!                                     \note Zone the surface is a part of
!                                     \type object-list
!                                     \object-list ZoneNames
!
!                                     For each zone, the field "Name" may be referenced
!                                     by other objects, such as BuildingSurface:Detailed, so it is
!                                     commented with "\reference ZoneNames"
!                                     Fields that reference a zone name, such as
BuildingSurface:Detailed's
!                                     "Zone Name", are commented as
!                                     "\type object-list" and "\object-list ZoneNames"
!                                     ** Note that a field may have multiple \reference commands.
!                                     ** This is useful if the object belongs to a small specific
!                                     object-list as well as a larger more general object-list.
!
! Object-level comments:
!
! \memo                               Memo describing the object
!
! \unique-object                       To flag objects which should appear only once in an idf
!                                     (this comment has no "value")
!
! \required-object                     To flag objects which are required in every idf
!                                     (this comment has no "value")
!
! \min-fields                          Minimum number of fields that should be included in the
!                                     object.  If appropriate, the Input Processor will fill
!                                     any missing fields with defaults (for numeric fields).
!                                     It will also supply that number of fields to the "get"
!                                     routines using blanks for alpha fields (note -- blanks
!                                     may not be allowable for some alpha fields).
!
! \obsolete                            This object has been replaced though is kept (and is read)
!                                     in the current version.  Please refer to documentation as
!                                     to the dispersal of the object.  If this object is
!                                     encountered in an IDF, the InputProcessor will post an
!                                     appropriate message to the error file.
!                                     usage: \obsolete New=>[New object name]
!
! \extensible:<#>                      This object is dynamically extensible -- meaning, if you
!                                     change the IDD appropriately (if the object has a simple list
!                                     structure -- just add items to the list arguments (i.e. BRANCH
!                                     LIST). These will be automatically redimensioned and used during
!                                     the simulation. <#> should be entered by the developer to signify
!                                     how many of the last fields are needed to be extended (and
EnergyPlus
!                                     will attempt to auto-extend the object).
!
! \format                              The object should have a special format when saved in
!                                     the IDF Editor with the special format option enabled.
!                                     The options include SingleLine, Vertices, CompactSchedule,
!                                     FluidProperties, ViewFactors, and Spectral.
!                                     The SingleLine option puts all the fields for the object
!                                     on a single line. The Vertices option is used in objects
!                                     that use X, Y and Z fields to format those three fields
!                                     on a single line.
!                                     The CompactSchedule formats that specific object.
!                                     The FluidProperty option formats long lists of fluid
!                                     properties to ten values per line.

```

```

!           The ViewFactor option formats three fields related to
!           view factors per line.
!           The Spectral option formats the four fields related to
!           window glass spectral data per line.
!
! Group-level comments:
!
! \group           Name for a group of related objects
!
! Notes on comments
! -----
!
! 1. If a particular comment is not applicable (such as units, or default)
! then simply omit the comment rather than indicating N/A.
!
! 2. Memos and notes should be brief (recommend 5 lines or less per block).
! More extensive explanations are expected to be in the user documentation
!
! Default IP conversions (no \ip-units necessary)
!   m           =>   ft           3.281
!   W           =>   Btu/h        3.412
!   m3/s        =>   ft3/min      2118.6438
!   C           =>   F           1.8 (plus 32)
!   kg/J        =>   lb/Btu       2325.83774250441
!   Pa          =>   psi          0.0001450377
!   W/m-K       =>   Btu-in/h-ft2-F 6.93481276005548
!   W/K         =>   Btu/h-F      1.8987
!   deltaC     =>   deltaF       1.8
!   m2          =>   ft2         10.764961
!   K           =>   R           1.8
!   1/K         =>   1/R         0.5555555556
!   (kg/s)/W   =>   (lbm/sec)/(Btu/hr) 0.646078115385742
!   J/kg       =>   Btu/lb       0.00042956 (plus 7.6736)
!   kg-H2O/kg-air =>   lb-H2O/lb-air   1
!   kJ/kg      =>   Btu/lb       0.429925
!   lux        =>   foot-candles 0.092902267
!   kg/m3      =>   lb/ft3       0.062428
!   kg/s       =>   lb/s         2.2046
!   kg/s-m     =>   lb/s-ft      0.67194
!   m3         =>   ft3          35.319837041
!   m3         =>   gal          264.172
!   W/m2-K     =>   Btu/h-ft2-F  0.176110194261872
!   1/m        =>   1/ft         0.304785126485827
!   J/kg-K     =>   Btu/lb-F     0.000239005736137667
!   J/m3-K     =>   Btu/ft3-F   1.49237004739337E-05
!   m/s        =>   ft/min       196.86
!   m/s        =>   miles/hr     2.2369
!   m2-K/W     =>   ft2-F-hr/Btu 5.678263
!   W/m2       =>   Btu/h-ft2    0.316957210776545
!   A/K        =>   A/F          0.555555555555556
!   g/kg       =>   grains/lb     7.00000
!   g/m-s      =>   lb/ft-s      0.000671968949659
!   g/m-s-K    =>   lb/ft-s-F    0.000373574867724868
!   J/K        =>   Btu/F        0.000526917584820558
!   J/kg-K2    =>   Btu/lb-F2    0.000132889924714692
!   J/m3       =>   Btu/ft3     2.68096514745308E-05
!   kg/kg-K    =>   lb/lb-F     0.555555555555556
!   kPa        =>   psi          0.145038
!   kPa        =>   inHg        0.29523
!   m2/s       =>   ft2/s       10.764961
!   m3/kg      =>   ft3/lb       16.018
!   m3/m3      =>   ft3/ft3     1

```

!	N-s/m2	=>	lbf-s/ft2	0.0208857913669065
!	V/K	=>	V/F	0.5555555555555556
!	W/m-K2	=>	Btu/h-F2-ft	0.321418310071648
!	m3/s-m	=>	ft3/min-ft	645.89
!	J/m2-K	=>	Btu/ft2-F	4.89224766847393E-05
!	cycles/hr	=>	cycles/hr	1
!	kg/kg	=>	lb/lb	1
!	J/J	=>	Btu/Btu	1
!	g/GJ	=>	lb/MWh	0.00793664091373665
!	L/GJ	=>	gal/kWh	0.000951022349025202
!	m3/GJ	=>	ft3/MWh	127.13292
!	m3/s-m2	=>	ft3/min-ft2	196.85
!	m3/s-person	=>	ft3/min-person	2118.6438
!	W/m2-K2	=>	Btu/h-ft2-F2	0.097826
!	g/MJ	=>	lb/MWh	7.93664091373665
!	L/MJ	=>	gal/kWh	0.951022349025202
!	m3/MJ	=>	ft3/kWh	127.13292
!	W/W	=>	Btuh/Btuh	1
!	\$/m2	=>	\$/ft2	0.0928939733269818
!	\$	=>	\$	1
!	\$/kW	=>	\$/ (kBtuh/h)	0.293083235638921
!	\$/m3	=>	\$/ft3	0.0283127014102352
!	years	=>	years	1
!	\$/ (W/K)	=>	\$/ (Btu/h-F)	0.52667614683731
!	\$/ (m3/s)	=>	\$/ (ft3/min)	0.000472000059660808
!	W/m	=>	Btu/h-ft	1.04072
!	K/m	=>	F/ft	0.54861322767449
!	W/s	=>	W/s	1
!	kmol	=>	kmol	1
!	J	=>	Wh	0.000277777777777778
!	GJ	=>	ton-hrs	78.9889415481832
!	kg/m2	=>	lb/ft2	0.204794053596664
!	kg	=>	lb	2.2046
!	percent/K	=>	percent/F	0.5555555555555556
!	kg/s2	=>	lb/s2	2.2046
!	g/mol	=>	lb/mol	0.0022046
!	deltaJ/kg	=>	deltaBtu/lb	0.0004299
!	person/m2	=>	person/ft2	0.0928939733269818
!	m2/person	=>	ft2/person	10.764961
!	W/person	=>	Btu/h-person	3.412
!	m3/person	=>	ft3/person	35.319837041
!	m3/hr-person	=>	ft3/hr-person	35.319837041
!	m3/m2	=>	ft3/ft2	3.281
!	m3/hr-m2	=>	ft3/hr-ft2	3.281
!	m3/hr	=>	ft3/hr	35.319837041
!	s/m	=>	s/ft	0.304785126485827
!	! Other conversions supported (needs the \ip-units code)			
!	m	=>	in	39.37
!	W	=>	W	1
!	m3/s	=>	gal/min	15852
!	Pa	=>	inHg	0.00029613
!	Pa	=>	inH2O	0.00401463
!	Pa	=>	ftH2O	0.00033455
!	W/person	=>	W/person	1
!	W/m2	=>	W/m2	1
!	W/m2	=>	W/ft2	0.0928939733269818
!	! Units fields that are not translated			
!	deg			
!	hr			
!	A			

```

! dimensionless
! V
! ohms
! A/V
! eV
! percent
! s
! W/m2 or deg C
! W/m2, W or deg C
! minutes
! *****

```

The Site:Location object will serve as an example.

```

Site:Location,
  \unique-object
  \min-fields 5
A1 , \field Name
  \required-field
  \type alpha
N1 , \field Latitude
  \units deg
  \minimum -90.0
  \maximum +90.0
  \default 0.0
  \note + is North, - is South, degree minutes represented in decimal (i.e. 30 minutes is .5)
  \type real
N2 , \field Longitude
  \units deg
  \minimum -180.0
  \maximum +180.0
  \default 0.0
  \note - is West, + is East, degree minutes represented in decimal (i.e. 30 minutes is .5)
  \type real
N3 , \field Time Zone
  \note basic these limits on the WorldTimeZone Map (2003)
  \units hr
  \minimum -12.0
  \maximum +14.0
  \default 0.0
  \note Time relative to GMT. Decimal hours.
  \type real
N4 ; \field Elevation
  \units m
  \minimum -300.0
  \maximum< 6096.0
  \default 0.0
  \type real

```

First, the object name is given. (Site:Location) This is followed by a comma in both the definition (IDD) and in an input file (IDF). In fact, all fields except the terminating field of an IDD class object and IDF object are followed by commas. The final field in an IDD class object or in an IDF object is terminated by a semi-colon.

Next is an alpha field, the location name. As noted above, for input, spaces are significant in this field. The main inputs for Location are numeric fields. These are numbered (as is the alpha field) for convenience. The \ designations will show various information about the objects as described above in the IDD conventions discussion. Of importance for reading this document are the units and possible minimum and maximum values for a field. Defaults are produced if applicable and if the field is blank in the IDF. For this example, that won't work because there is no default AND the Location name is a required field.

The \minimum, \maximum and \default comments are automatically processed in the Input Processor for numeric fields. Any infractions of the \minimum, \maximum fields will be automatically detected and messages will appear in the standard error file. After all the input is checked, infractions will cause program termination (before the bulk of the simulation is completed). Defaults are also enforced if you leave the numeric field blank.

\min-fields deserves some explanation. This has object level enforcement. When min-fields is specified for an object, it has meaning to the InputProcessor – telling the IP the number of fields that must be returned to a GetInput routine regardless of how many fields may actually appear in the IDF. So, min-fields is actually an automatic assistance in most instances.

Some objects need all the parameters listed by the definition; some do not. In the descriptions that are contained in the Input Output Reference, we try to indicate which parts are optional. Usually, these will be the last fields in the object input or definition.

Using the Input-Output Reference Document

To assist you in using the [Input Output Reference](#) document, it is grouped similarly to the IDD file.

To determine the latest set of groups and objects, it will be useful for you to open the IDFEditor (an intelligent editor that is installed with EnergyPlus) and write out the current object list. The following figure shows the screen shot of the IDFEditor and the help menu to select the objectlist. Select “**create objectlist.txt**” to create the object list – it will be put into the IDFEditor program folder.

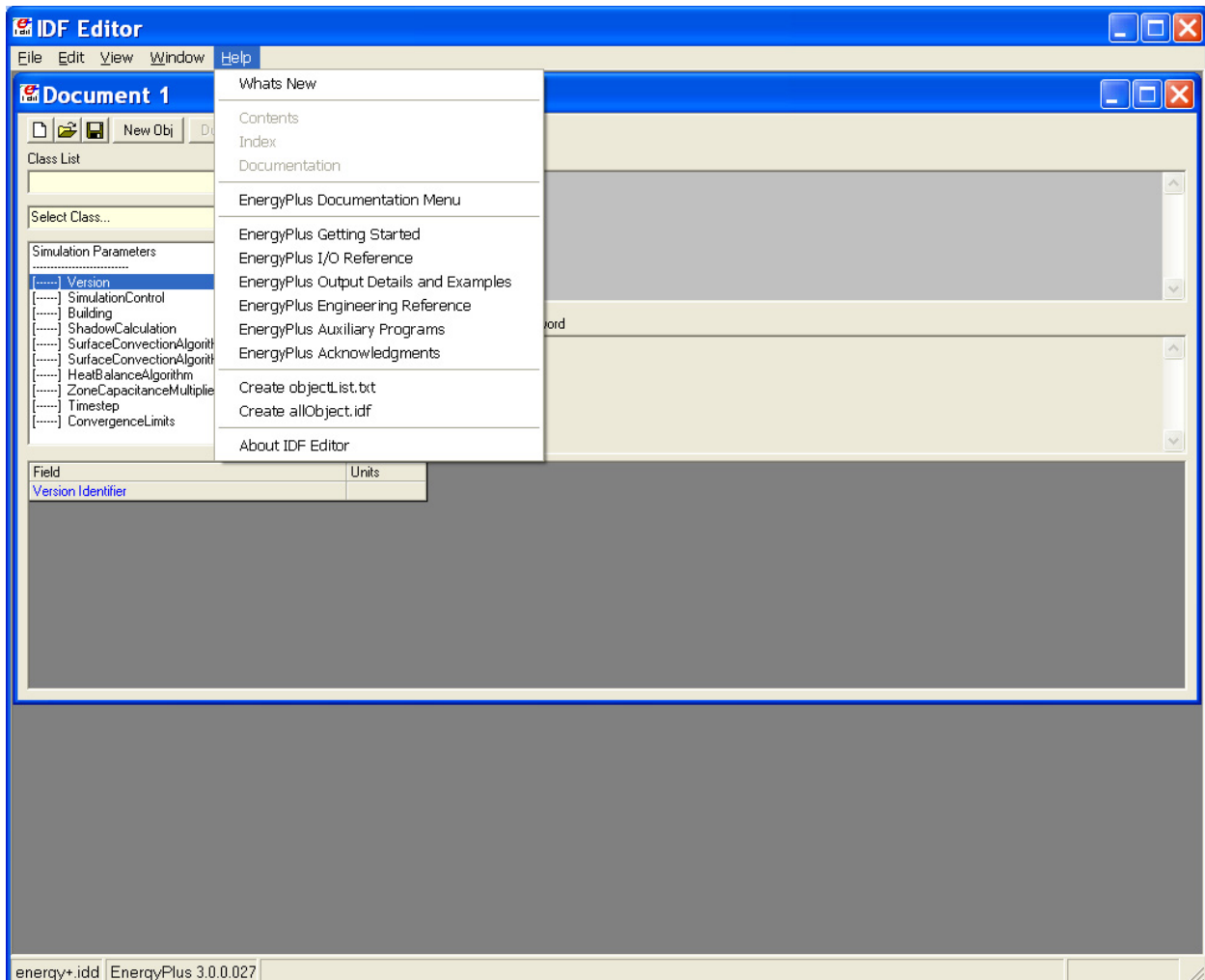


Figure 2. Using IDFEditor to find the latest groups and objects for the Energy+.idd

The produced list will look something like:

```
Simulation Parameters
-----
```

```

[-----] Version
[-----] SimulationControl
[-----] Building
[-----] ShadowCalculation
[-----] SurfaceConvectionAlgorithm:Inside
[-----] SurfaceConvectionAlgorithm:Outside
[-----] HeatBalanceAlgorithm
[-----] ZoneCapacitanceMultiplier
[-----] Timestep
[-----] ConvergenceLimits

Location - Climate - Weather File Access
-----
[-----] Site:Location
[-----] SizingPeriod:DesignDay
[-----] SizingPeriod:WeatherFileDays
[-----] SizingPeriod:WeatherFileConditionType
[-----] RunPeriod
[-----] RunPeriodControl:SpecialDays
[-----] RunPeriodControl:DaylightSavingTime

```

“Simulation Parameters” and “Location – Climate – Weather File Access” are groups. Version, Building, etc are objects.

Standard EnergyPlus Units

EnergyPlus expects information in a single unit system (SI). This requires interface developers to convert user inputs from those preferred by architects and engineers into the standard metric units of EnergyPlus. EnergyPlus will not perform any units conversions and will not have any unit conversion routines.

ASCII with no spaces is used for abbreviations. Note that exponents appear without any indication of exponentiation: i.e., kg/m3 not kg/m^3 or kg/m**3. Also note the use of dashes. We have W/m2-K not W/m2*K or W/(m2*K).

At the end we note the “problem” variables – the inputs that have non-standard units. Inputs using these units will have to be changed and the code checked to see how the quantities are used internally.

Table 1. Standard EnergyPlus Units

Quantity	unit	abbreviation
angular degrees	degree	deg
Length	meter	m
Area	square meter	m2
Volume	cubic meter	m3
Time	seconds	s
Frequency	Hertz	Hz
Temperature	Celsius	C
absolute temperature	Kelvin	K
temperature difference	Kelvin	delK
speed	meters per second	m/s
energy (or work)	Joules	J
power	Watts	W
mass	kilograms	kg
force	Newton	N

mass flow	kilograms per second	kg/s
volume flow	cubic meters per second	m ³ /s
pressure	Pascals	Pa
pressure difference	Pascals	delPa
specific enthalpy	Joules per kilogram	J/kg
density	kilograms per cubic meter	kg/m ³
heat flux	watts per square meter	W/m ²
specific heat	-----	J/kg-K
conductivity	-----	W/m-K
diffusivity	-----	m ² /s
heat transfer coefficient	-----	W/m ² -K
R-value	-----	m ² -K/W
heating or cooling capacity	Watts	W
electric potential	volts	V
electric current	Amperes	A
illuminance	lux	lx
luminous flux	lumen	lm
luminous intensity	candelas	cd
luminance	candelas per square meter	cd/m ²
vapor diffusivity	m ² /s	
viscosity	-----	kg/m-s
porosity	-----	m ³ /m ³
thermal gradient coeff for moisture capacity	-----	kg/kg-K
isothermal moisture capacity	-----	m ³ /kg

EnergyPlus Reports

Several items are used to specify what will appear in the output file(s). The output is described in the next section of this document. What appears here is a sample of outputs – more detailed and complete versions can be found in the “Output Details and Examples” document. In addition to the individual reports, there are sets of predefined reports that can appear. View the Input for Output section and the Tabular reports section in the Input Output Reference document for more details.

Output

EnergyPlus produces several output files as shown in the section on “Running EnergyPlus”. This section will discuss the data contained in the “standard” output file (**eplusout.eso**). It, too, has a data dictionary but unlike the input files, the output data dictionary is contained within the output file. Thus, the basic structure of the standard output file is:

```
Data Dictionary Information
End of Data Dictionary
Data
...
Data
End of Data
```

As with the IDF structure, there are rules associated with the interpretation of the standard output data dictionary. These rules are summarized as follows:

- The first item on each line is an integer which represents the “report code”. This “report code” will be listed in the data section where it will also be the first item on each line, identifying the data. Only 2 lines in the output file will not have an integer as the first item (“End of Data Dictionary” and “End of Data” lines).
- The second item on each line is also an integer. This integer corresponds to the number of items left on the dictionary line. Each string consists of a variable name and units in square brackets. Square brackets are required for all strings. If there are no units associated with a particular variable, then there are no characters between the brackets.

Six standard items appear at the start of every EnergyPlus Standard Output File Data Dictionary:

```
Program Version,EnergyPlus, 1.0, Beta 2, Build 017
1,5,Environment Title[],Latitude[degrees],Longitude[degrees],Time Zone[],Elevation[m]
2,6,Day of Simulation[],Month[],Day of Month[],DST Indicator[1=yes 0=no], Hour[], StartMinute[], EndMinute[], DayType
3,3,Cumulative Day of Simulation[],Month[],Day of Month[],DST Indicator[1=yes 0=no],DayType
4,2,Cumulative Days of Simulation[],Month[]
5,1,Cumulative Days of Simulation[]
```

Item 0 is the program version statement.

Item 1 is produced at the beginning of each new “environment” (design day, run period).

Item 2 is produced prior to any variable reported at the timestep or hourly intervals. Hourly intervals will be shown with a start minute of 0.0 and an end minute of 60.0. Timestep intervals will show the appropriate start and end minutes.

Item 3 is produced prior to any variable reported at the daily interval.

Item 4 is produced prior to any variable reported at the monthly interval.

Item 5 is produced prior to any variable reported at the end of the “environment”.

Following these five standard lines will be the variables requested for reporting from the input file (ref. Report Variable). For example:

```
6,2,Environment,Outdoor Dry Bulb [C] !Hourly
21,2,ZONE ONE,Mean Air Temperature[C] !Hourly
22,2,ZONE ONE,Zone-Total Latent Gain[J] !Hourly
26,2,ZONE ONE,Zone-Total Electric Consumption[J] !Hourly
```

This example illustrates the non-consecutive nature of the “report codes”. Internally, EnergyPlus counts each variable that *could* be reported. This is the assigned “report code”. However, the user may not request each possible variable for reporting. Note that, currently, the requested reporting frequency is shown as a comment (!) line in the standard output file.

The data is produced when the actual simulation is performed (after the warmup days). Data output is simpler in format than the data dictionary lines. From the dictionary above:

```

1,DENVER COLORADO WINTER, 39.75,-104.87, -7.00,1610.26
2, 1, 1,21, 0, 1, 0.00,60.00,Monday
6,-17.22222
21,-17.22219
22,0.0000000E+00
26,0.0000000E+00
2, 1, 1,21, 0, 2, 0.00,60.00,Monday
6,-17.22222
21,-17.22219
22,0.0000000E+00
26,0.0000000E+00
2, 1, 1,21, 0, 3, 0.00,60.00,Monday
6,-17.22222
21,-17.22219
22,0.0000000E+00
26,0.0000000E+00
...
    
```

This output file can be easily turned into a form that is read into commonly used spreadsheet programs where it can be further analyzed, graphed, etc.

Solar Shading Test

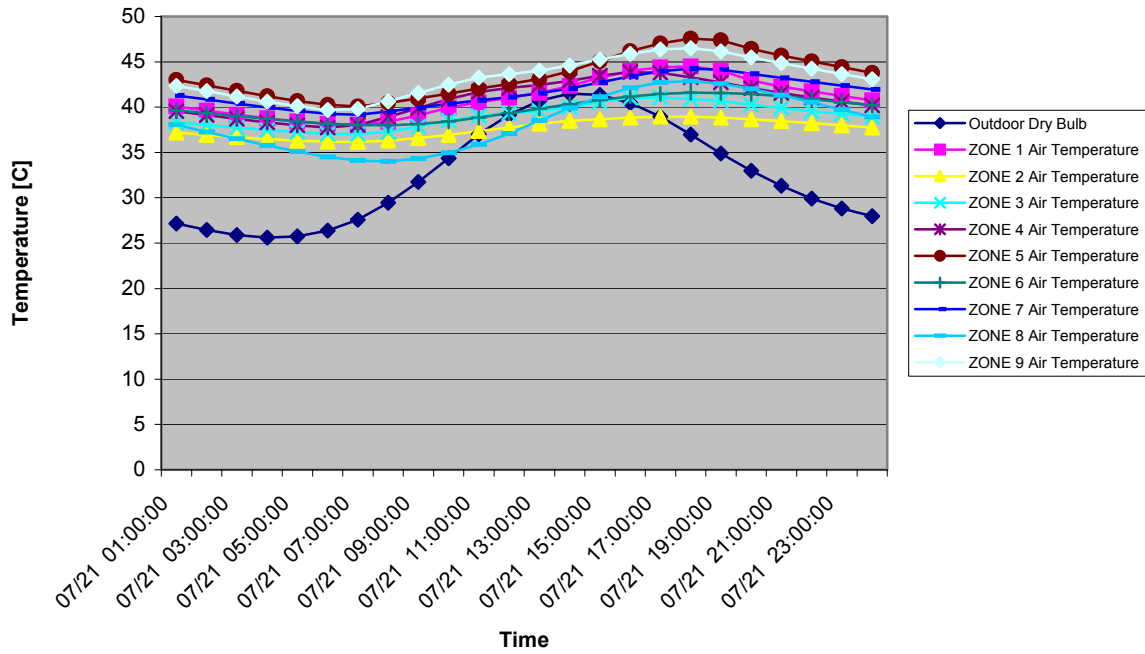


Figure 3. Example Chart from Standard Output File

Weather Data

Weather data in EnergyPlus is a simple text-based format, similar to the input data and output data files. The weather data format includes basic location information in the first eight lines: location (name, state/province/region, country), data source, latitude, longitude, time zone, elevation, peak heating and cooling design conditions, holidays, daylight saving period, typical and extreme periods, two lines for comments, and period covered by the data. The data are also comma-separated and contain much of the same data in the TMY2 weather data set (NREL 1995). EnergyPlus does not require a full year or 8760 (or 8784) hours in its weather files. In fact, EnergyPlus allows and reads subsets of years and even sub-hourly (5 minute, 15 minute) data—the weather format includes a ‘minutes’ field. EnergyPlus comes with a utility that reads standard weather service file types such as TMY2, IWEC and WYEC2 files, as examples, as well as being able to read a user defined custom format.

The “data dictionary” for EnergyPlus Weather Data is shown in the Auxiliary Programs document – please review that document for further information.

Running EnergyPlus

EnergyPlus is written in language conforming to Fortran Standard 90/95. It runs as a 32 bit console (non-Windows) application on Intel compatible computers (Windows NT, Windows 95/98). More explicit details on running EnergyPlus are available in a separate document (Running EnergyPlus in Auxiliary Programs document). The following files are used to run EnergyPlus:

```
EnergyPlus.exe (the executable file)
Energy+.ini (described below)
Energy+.idd (the input data dictionary file)
In.idf (the input file)
In.epw - optional (weather data file)
```

The input data dictionary and input data file have been discussed in the previous sections of this document.

For weather simulations, EnergyPlus accepts EnergyPlus weather files. Previous versions accepted BLAST formatted weather files and now a BLASTWeatherConverter program is provided. The actual file name is **in.epw**.

The Energy+.ini file is a “standard” Windows™ ini file and can be manipulated using the Windows API calls though EnergyPlus uses standard Fortran to manipulate it. It is a very simple ini file and is fully described in the [Auxiliary Programs](#) document. Energy+.ini and in.idf file should be in the directory from which you are running EnergyPlus.exe.

For the advanced user, there is also the “EPMacro” program, described in the Auxiliary Programs Document. You run it as a separate program before EnergyPlus (the batch file included in the install and shown in the GettingStarted document contains the commands).

EnergyPlus creates the following files (plus more):

Table 2. EnergyPlus Output Files

FileName	Description
Audit.out	Echo of input
Eplusout.err	Error file
Eplusout.eso	Standard Output File
Eplusout.eio	One time output file
Eplusout.rdd	Report Variable Data Dictionary
Eplusout.dxf	DXF (from Report,Surfaces,DXF;)
Eplusout.end	A one line summary of success or failure

The eplusout.err file may contain three levels of errors (Warning, Severe, Fatal) as well as the possibility of just message lines. These errors may be duplicated in other files (such as the standard output file).

Table 3. EnergyPlus Errors

Error Level	Action
Warning	Take note
Severe	Should Fix
Fatal	Program will abort

EnergyPlus produces several messages as it is executing, as a guide to its progress. For example, the run of the 1ZoneUncontrolled input file from Appendix A produces:

```

EnergyPlus Starting
EnergyPlus 1.3.0.011, 4/5/2006 2:59 PM
Initializing New Environment Parameters
Warming up {1}
Initializing Response Factors
Initializing Window Optical Properties
Initializing Solar Calculations
Initializing HVAC
Warming up {2}
Warming up {3}
Warming up {4}
Starting Simulation at 12/21 for DENVER_STAPLETON ANN HTG 99% CONDNS DB
Initializing New Environment Parameters
Warming up {1}
Warming up {2}
Warming up {3}
Starting Simulation at 07/21 for DENVER_STAPLETON ANN CLG 1% CONDNS DB=>MWB
EnergyPlus Run Time=00hr 00min 1.00sec

```

Extensive timing studies and fine-tuning of EnergyPlus is NOT complete. To give you an idea of comparable run times, we present the following (does not include HVAC) with an early version of EnergyPlus running on a 450MHZ machine. Remember, BLAST would be 1 calculation per hour, EnergyPlus (in this case) was 4 calculations per hour. Obviously, these are quite out of date. However, a recent change in a developer's test machine illustrates the importance of maximum memory. A 5 zone full year run on a 1.8GHZ, 1GB machine was running about 8 minutes – with a new 2.1GHZ, 2GB machine the same file takes about 2 minutes.

Table 4. Timings Comparison (EnergyPlus vs. BLAST)

File	BLAST Per Zone	EnergyPlus Per Zone
GeometryTest (5 Zones, 2 Design Day, Full Weather Year)	13 sec	33 sec
SolarShadingTest (9 Zones, Full Weather Year)	7 sec	25 sec

Licensing

In order to make efficient distribution of your interface, you should consider licensing EnergyPlus. First, you must license/register to use EnergyPlus. Since we are distributing EnergyPlus via the World Wide Web, at no charge, it will be easy to get your hands on a copy for testing out your interface. However, you may wish to understand more of the internals and, to make a complete distribution package, will need to at least execute a distribution license.

http://www.eere.energy.gov/buildings/energyplus/energyplus_licensing.html contains the details on licensing EnergyPlus for commercial or non-commercial use.


```

! Zonal Equipment:           NA
! Central Air Handling Equipment: No
! System Equipment Autosize: No
! Purchased Cooling:        No
! Purchased Heating:        No
! Purchased Chilled Water:  No
! Purchased Hot Water:      No
! Coils:                    None
! Pumps:                   None
! Boilers:                 None
! Chillers:               None
! Towers:                 None
!
! Results:
! Standard Reports:        Variable Dictionary, Surfaces (dxf-wireframe), Meter File
! Timestep or Hourly Variables: Hourly and Daily
! Time bins Report:       None
! HTML Report:            None
! Environmental Emissions: None
! Utility Tariffs:        None

Output:PreprocessorMessage,
  No Preprocessor Used,    !- Preprocessor Name
  Information,             !- Error Severity
  Illustrative Message,   !- Message Line 1
  No problems for processing; !- Message Line 2

Version,
  3.0;                    !- Version Identifier

Timestep,
  4;                      !- Number of Timesteps per Hour

Building,
  Simple One Zone (Wireframe DXF), !- Name
  0.0000000E+00,                !- North Axis {deg}
  Suburbs,                      !- Terrain
  .04,                          !- Loads Convergence Tolerance Value
  .004,                         !- Temperature Convergence Tolerance Value {deltaC}
  MinimalShadowing,            !- Solar Distribution
  30;                          !- Maximum Number of Warmup Days

HeatBalanceAlgorithm,
  ConductionTransferFunction; !- Algorithm

SurfaceConvectionAlgorithm:Inside,
  Detailed;                    !- Algorithm

SurfaceConvectionAlgorithm:Outside,
  Detailed;                    !- Algorithm

SimulationControl,
  No,                          !- Do Zone Sizing Calculation
  No,                          !- Do System Sizing Calculation
  No,                          !- Do Plant Sizing Calculation
  Yes,                         !- Run Simulation for Sizing Periods
  Yes;                         !- Run Simulation for Weather File Run Periods

RunPeriod,
  1,                          !- Begin Month
  1,                          !- Begin Day of Month
  12,                         !- End Month
  31,                         !- End Day of Month
  Tuesday,                   !- Day of Week for Start Day
  Yes,                       !- Use Weather File Holidays and Special Days
  Yes,                       !- Use Weather File Daylight Saving Period
  No,                        !- Apply Weekend Holiday Rule
  Yes,                       !- Use Weather File Rain Indicators
  Yes;                       !- Use Weather File Snow Indicators

Site:Location,

```

```

DENVER_STAPLETON_CO_USA_WMO_724690,  !- Name
39.77,                               !- Latitude {deg}
-104.87,                              !- Longitude {deg}
-7.00,                                 !- Time Zone {hr}
1611.00;                               !- Elevation {m}

! WMO=724690 Time Zone=NAM             (GMT-07:00) Mountain Time (US & Canada)
! Data Source=ASHRAE 2005 Annual Design Conditions
! Using Design Conditions from "Climate Design Data 2005 ASHRAE Handbook"
! DENVER_STAPLETON_CO_USA Extreme Annual Wind Speeds, 1%=10.9m/s, 2.5%=8.8m/s, 5%=7.7m/s
! DENVER_STAPLETON_CO_USA Extreme Annual Temperatures, Max Drybulb=37.2°C Min Drybulb=-24.6°C
! DENVER_STAPLETON_CO_USA Annual Heating Design Conditions Wind Speed=2.3m/s Wind Dir=180
! Coldest Month=December
! DENVER_STAPLETON_CO_USA Annual Heating 99%, MaxDB=-16°C

```

SizingPeriod:DesignDay,

```

DENVER_STAPLETON Ann Htg 99% Condns DB,  !- Name
-16,                                     !- Maximum Dry-Bulb Temperature {C}
0.0,                                     !- Daily Temperature Range {deltaC}
-16,                                     !- Humidity Indicating Conditions at Maximum Dry-Bulb
83411.,                                  !- Barometric Pressure {Pa}
2.3,                                     !- Wind Speed {m/s}
180,                                     !- Wind Direction {deg}
0.00,                                    !- Sky Clearness
0,                                       !- Rain Indicator
0,                                       !- Snow Indicator
21,                                      !- Day of Month
12,                                      !- Month
WinterDesignDay,                        !- Day Type
0,                                       !- Daylight Saving Time Indicator
WetBulb;                                !- Humidity Indicating Type

```

```

! DENVER_STAPLETON Annual Cooling Design Conditions Wind Speed=4m/s Wind Dir=120
! Hottest Month=July
! DENVER_STAPLETON_CO_USA Annual Cooling (DB=>MWB) 1%, MaxDB=32.6°C MWB=15.5°C

```

SizingPeriod:DesignDay,

```

DENVER_STAPLETON Ann Clg 1% Condns DB=>MWB,  !- Name
32.6,                                       !- Maximum Dry-Bulb Temperature {C}
15.2,                                       !- Daily Temperature Range {deltaC}
15.5,                                       !- Humidity Indicating Conditions at Maximum Dry-Bulb
83411.,                                    !- Barometric Pressure {Pa}
4,                                          !- Wind Speed {m/s}
120,                                       !- Wind Direction {deg}
1.00,                                      !- Sky Clearness
0,                                          !- Rain Indicator
0,                                          !- Snow Indicator
21,                                        !- Day of Month
7,                                         !- Month
SummerDesignDay,                          !- Day Type
0,                                         !- Daylight Saving Time Indicator
WetBulb;                                  !- Humidity Indicating Type

```

Material:NoMass,

```

R13LAYER,                                !- Name
Rough,                                   !- Roughness
2.290965,                                !- Thermal Resistance {m2-K/W}
0.9000000,                               !- Thermal Absorptance
0.7500000,                               !- Solar Absorptance
0.7500000;                               !- Visible Absorptance

```

Material:NoMass,

```

R31LAYER,                                !- Name
Rough,                                   !- Roughness
5.456,                                   !- Thermal Resistance {m2-K/W}
0.9000000,                               !- Thermal Absorptance
0.7500000,                               !- Solar Absorptance
0.7500000;                               !- Visible Absorptance

```

Material,

```

C5 - 4 IN HW CONCRETE,                  !- Name

```

```

MediumRough,          !- Roughness
0.1014984,           !- Thickness {m}
1.729577,            !- Conductivity {W/m-K}
2242.585,             !- Density {kg/m3}
836.8000,             !- Specific Heat {J/kg-K}
0.9000000,           !- Thermal Absorptance
0.6500000,           !- Solar Absorptance
0.6500000;           !- Visible Absorptance

Construction,
R13WALL,              !- Name
R13LAYER;             !- Outside Layer

Construction,
FLOOR,                !- Name
C5 - 4 IN HW CONCRETE; !- Outside Layer

Construction,
ROOF31,               !- Name
R31LAYER;             !- Outside Layer

Site:GroundTemperature:BuildingSurface,
18.89,                !- January Ground Temperature {C}
18.92,                !- February Ground Temperature {C}
19.02,                !- March Ground Temperature {C}
19.12,                !- April Ground Temperature {C}
19.21,                !- May Ground Temperature {C}
19.23,                !- June Ground Temperature {C}
19.07,                !- July Ground Temperature {C}
19.32,                !- August Ground Temperature {C}
19.09,                !- September Ground Temperature {C}
19.21,                !- October Ground Temperature {C}
19.13,                !- November Ground Temperature {C}
18.96;                !- December Ground Temperature {C}

Zone,
ZONE ONE,             !- Name
0.0000000E+00,        !- Direction of Relative North {deg}
0.0000000E+00,        !- X Origin {m}
0.0000000E+00,        !- Y Origin {m}
0.0000000E+00,        !- Z Origin {m}
1,                    !- Type
1,                    !- Multiplier
autocalculate,        !- Ceiling Height {m}
autocalculate;        !- Volume {m3}

ScheduleTypeLimits,
Fraction,              !- Name
0.0 : 1.0,            !- Range
CONTINUOUS;           !- Numeric Type

GlobalGeometryRules,
UpperLeftCorner,       !- Starting Vertex Position
CounterClockWise,     !- Vertex Entry Direction
WorldCoordinateSystem; !- Coordinate System

BuildingSurface:Detailed,
Zn001:Wall001,        !- Name
Wall,                 !- Surface Type
R13WALL,               !- Construction Name
ZONE ONE,              !- Zone Name
Outdoors,              !- Outside Boundary Condition
,                      !- Outside Boundary Condition Object
SunExposed,            !- Sun Exposure
WindExposed,           !- Wind Exposure
0.5000000,            !- View Factor to Ground
4,                     !- Number of Vertices
0.0000000E+00,0.0000000E+00,4.572000, !- X,Y,Z ==> Vertex 1
0.0000000E+00,0.0000000E+00,0.0000000E+00, !- X,Y,Z ==> Vertex 2
15.24000,0.0000000E+00,0.0000000E+00, !- X,Y,Z ==> Vertex 3
15.24000,0.0000000E+00,4.572000; !- X,Y,Z ==> Vertex 4

```

```

BuildingSurface:Detailed,
Zn001:Wall002,           !- Name
Wall,                   !- Surface Type
R13WALL,                !- Construction Name
ZONE ONE,               !- Zone Name
Outdoors,               !- Outside Boundary Condition
,                       !- Outside Boundary Condition Object
SunExposed,             !- Sun Exposure
WindExposed,            !- Wind Exposure
0.5000000,              !- View Factor to Ground
4,                      !- Number of Vertices
15.24000,0.0000000E+00,4.572000, !- X,Y,Z ==> Vertex 1
15.24000,0.0000000E+00,0.0000000E+00, !- X,Y,Z ==> Vertex 2
15.24000,15.24000,0.0000000E+00, !- X,Y,Z ==> Vertex 3
15.24000,15.24000,4.572000; !- X,Y,Z ==> Vertex 4

BuildingSurface:Detailed,
Zn001:Wall003,           !- Name
Wall,                   !- Surface Type
R13WALL,                !- Construction Name
ZONE ONE,               !- Zone Name
Outdoors,               !- Outside Boundary Condition
,                       !- Outside Boundary Condition Object
SunExposed,             !- Sun Exposure
WindExposed,            !- Wind Exposure
0.5000000,              !- View Factor to Ground
4,                      !- Number of Vertices
15.24000,15.24000,4.572000, !- X,Y,Z ==> Vertex 1
15.24000,15.24000,0.0000000E+00, !- X,Y,Z ==> Vertex 2
0.0000000E+00,15.24000,0.0000000E+00, !- X,Y,Z ==> Vertex 3
0.0000000E+00,15.24000,4.572000; !- X,Y,Z ==> Vertex 4

BuildingSurface:Detailed,
Zn001:Wall004,           !- Name
Wall,                   !- Surface Type
R13WALL,                !- Construction Name
ZONE ONE,               !- Zone Name
Outdoors,               !- Outside Boundary Condition
,                       !- Outside Boundary Condition Object
SunExposed,             !- Sun Exposure
WindExposed,            !- Wind Exposure
0.5000000,              !- View Factor to Ground
4,                      !- Number of Vertices
0.0000000E+00,15.24000,4.572000, !- X,Y,Z ==> Vertex 1
0.0000000E+00,15.24000,0.0000000E+00, !- X,Y,Z ==> Vertex 2
0.0000000E+00,0.0000000E+00,0.0000000E+00, !- X,Y,Z ==> Vertex 3
0.0000000E+00,0.0000000E+00,4.572000; !- X,Y,Z ==> Vertex 4

BuildingSurface:Detailed,
Zn001:Flr001,           !- Name
Floor,                  !- Surface Type
FLOOR,                  !- Construction Name
ZONE ONE,               !- Zone Name
Surface,                !- Outside Boundary Condition
Zn001:Flr001,           !- Outside Boundary Condition Object
NoSun,                  !- Sun Exposure
NoWind,                 !- Wind Exposure
1.000000,               !- View Factor to Ground
4,                      !- Number of Vertices
15.24000,0.000000,0.0, !- X,Y,Z ==> Vertex 1
0.000000,0.000000,0.0, !- X,Y,Z ==> Vertex 2
0.000000,15.24000,0.0, !- X,Y,Z ==> Vertex 3
15.24000,15.24000,0.0; !- X,Y,Z ==> Vertex 4

BuildingSurface:Detailed,
Zn001:Roof001,          !- Name
Roof,                   !- Surface Type
ROOF31,                 !- Construction Name
ZONE ONE,               !- Zone Name
Outdoors,               !- Outside Boundary Condition

```

```

,                               !- Outside Boundary Condition Object
SunExposed,                     !- Sun Exposure
WindExposed,                    !- Wind Exposure
0.0000000E+00,                 !- View Factor to Ground
4,                               !- Number of Vertices
0.000000,15.24000,4.572,       !- X,Y,Z ==> Vertex 1
0.000000,0.000000,4.572,       !- X,Y,Z ==> Vertex 2
15.24000,0.000000,4.572,       !- X,Y,Z ==> Vertex 3
15.24000,15.24000,4.572;      !- X,Y,Z ==> Vertex 4

Output:Variable,
*,                               !- Key Value
  outdoor dry bulb,             !- Variable Name
  hourly;                       !- Reporting Frequency

Output:Variable,
*,                               !- Key Value
  Daylight Saving Time Indicator, !- Variable Name
  daily;                         !- Reporting Frequency

Output:Variable,
*,                               !- Key Value
  DayType Index,               !- Variable Name
  daily;                       !- Reporting Frequency

Output:Variable,
*,                               !- Key Value
  Zone Mean Air Temperature,    !- Variable Name
  hourly;                       !- Reporting Frequency

Output:Variable,
*,                               !- Key Value
  Zone Total Internal Latent Gain, !- Variable Name
  hourly;                       !- Reporting Frequency

Output:Variable,
*,                               !- Key Value
  Zone Mean Radiant Temperature, !- Variable Name
  hourly;                       !- Reporting Frequency

Output:Variable,
*,                               !- Key Value
  Zone Air Balance Surface Convection Rate, !- Variable Name
  hourly;                       !- Reporting Frequency

Output:Variable,
*,                               !- Key Value
  Zone Air Balance Air Energy Storage Rate, !- Variable Name
  hourly;                       !- Reporting Frequency

Output:Variable,
*,                               !- Key Value
  Surface Inside Temperature,    !- Variable Name
  daily;                         !- Reporting Frequency

Output:Variable,
*,                               !- Key Value
  Surface Outside Temperature,   !- Variable Name
  daily;                         !- Reporting Frequency

Output:Variable,
*,                               !- Key Value
  Surface Int Convection Coeff,  !- Variable Name
  daily;                         !- Reporting Frequency

Output:Variable,
*,                               !- Key Value
  Surface Ext Convection Coeff,  !- Variable Name
  daily;                         !- Reporting Frequency

Output:Reports,

```

```

VariableDictionary,      !- Type of Report
IDF;                    !- Report Name

Output:Reports,
  surfaces,              !- Type of Report
  dxf:wireframe;        !- Report Name

Output:Reports,
  construction;         !- Type of Report

Output:Meter:MeterFileOnly,
  ExteriorLights:Electricity, !- Name
  hourly;                !- Reporting Frequency

Output:Meter:MeterFileOnly,
  Carbon Equivalent:Facility, !- Name
  hourly;                !- Reporting Frequency

Output:Meter:MeterFileOnly,
  EnergyTransfer:Building, !- Name
  hourly;                !- Reporting Frequency

Output:Meter:MeterFileOnly,
  EnergyTransfer:Facility, !- Name
  hourly;                !- Reporting Frequency

OutputControl:Table:Style,
  HTML;                 !- Column Separator

Output:Table:SummaryReports,
  AllSummary;           !- Report 1 Name

Exterior:Lights,
  ExtLights,            !- Name
  AlwaysOn,             !- Schedule Name
  5250,                 !- Design Level {W}
  AstronomicalClock,   !- Control Option
  Grounds Lights;      !- End-Use Subcategory

ScheduleTypeLimits,
  On/Off,               !- Name
  0:1,                  !- Range
  DISCRETE;            !- Numeric Type

Schedule:Day:Hourly,
  On,                   !- Name
  On/Off,               !- Schedule Type Limits Name
  1.,                   !- Hour 1
  1.,                   !- Hour 2
  1.,                   !- Hour 3
  1.,                   !- Hour 4
  1.,                   !- Hour 5
  1.,                   !- Hour 6
  1.,                   !- Hour 7
  1.,                   !- Hour 8
  1.,                   !- Hour 9
  1.,                   !- Hour 10
  1.,                   !- Hour 11
  1.,                   !- Hour 12
  1.,                   !- Hour 13
  1.,                   !- Hour 14
  1.,                   !- Hour 15
  1.,                   !- Hour 16
  1.,                   !- Hour 17
  1.,                   !- Hour 18
  1.,                   !- Hour 19
  1.,                   !- Hour 20
  1.,                   !- Hour 21
  1.,                   !- Hour 22
  1.,                   !- Hour 23
  1.;                   !- Hour 24

```



```
Schedule:Week:Daily,
  On Weeks,          !- Name
  On,                !- Sunday Schedule:Day Name
  On,                !- Monday Schedule:Day Name
  On,                !- Tuesday Schedule:Day Name
  On,                !- Wednesday Schedule:Day Name
  On,                !- Thursday Schedule:Day Name
  On,                !- Friday Schedule:Day Name
  On,                !- Saturday Schedule:Day Name
  On,                !- Holiday Schedule:Day Name
  On,                !- SummerDesignDay Schedule:Day Name
  On,                !- WinterDesignDay Schedule:Day Name
  On,                !- CustomDay1 Schedule:Day Name
  On;                !- CustomDay2 Schedule:Day Name

Schedule:Year,
  AlwaysOn,          !- Name
  On/Off,            !- Schedule Type Limits Name
  On Weeks,          !- Schedule:Week Name 1
  1,                 !- Start Month 1
  1,                 !- Start Day 1
  12,                !- End Month 1
  31;                !- End Day 1
```