

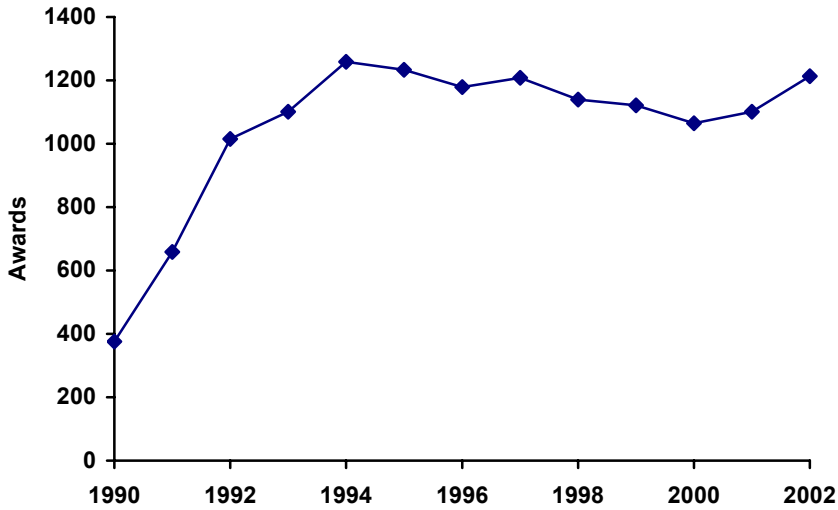
**NIH
Research Supplements
for
Underrepresented Minorities
and
Individuals with Disabilities**

Fiscal Year 2002

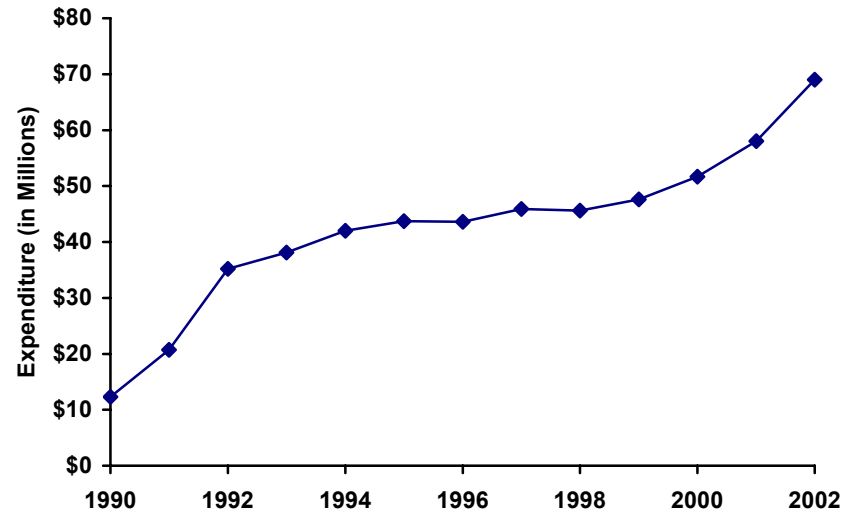
TRENDS IN MINORITY SUPPLEMENTS

FISCAL YEARS 1990-2002

Number of Awards



Total Expenditures



**MINORITY SUPPLEMENTS AWARDED
BY INSTITUTE OR CENTER**

FISCAL YEAR 2002

	<u>New Awards</u>		<u>Continuing Awards</u>		<u>Total Awards</u>	
	<u>Number</u>	<u>Amount</u>	<u>Number</u>	<u>Amount</u>	<u>Number</u>	<u>Amount</u>
NHLBI	78	\$5,395,548	74	\$5,028,836	152	\$10,424,384
NCI	81	\$5,168,029	89	\$5,240,330	170	\$10,408,359
NIDDK	70	\$7,333,300	39	\$2,591,543	109	\$9,924,843
NIMH	38	\$2,719,831	62	\$3,770,168	100	\$6,489,999
NIGMS	94	\$3,476,405	54	\$2,083,814	148	\$5,560,219
NIAID	65	\$2,427,644	61	\$3,125,326	126	\$5,552,970
NINDS	35	\$2,146,216	29	\$1,546,929	64	\$3,693,145
NIA	23	\$1,607,158	19	\$1,279,046	42	\$2,886,204
NIDA	31	\$1,366,724	23	\$896,503	54	\$2,263,227
NICHD	19	\$1,066,270	28	\$1,160,948	47	\$2,227,218
NIAMS	29	\$937,481	15	\$785,945	44	\$1,723,426
NIAAA	8	\$357,039	14	\$1,077,855	22	\$1,434,894
NEI	15	\$705,965	13	\$665,067	28	\$1,371,032
NIDCR	12	\$571,596	11	\$709,356	23	\$1,280,952
NIEHS	10	\$506,425	10	\$635,373	20	\$1,141,798
NHGRI	7	\$408,934	8	\$563,534	15	\$972,468
NCRR	3	\$124,647	9	\$570,490	12	\$695,137
NIDCD	11	\$384,078	10	\$259,403	21	\$643,481
NINR	7	\$321,161	5	\$297,444	12	\$618,605
NCCAM	1	\$41,715	1	\$27,275	2	\$68,990
NLM	0	\$0	1	\$60,192	1	\$60,192
NIBIB	1	\$32,766	0	\$32,766	1	\$32,766
FIC	0	\$0	0	\$0	0	\$0
NCMHD	0	\$0	0	\$0	0	\$0
ALL ICs	638	\$37,098,932	575	\$32,408,143	1213	\$69,474,309

**AWARD RATE OF NEW APPLICATIONS
FOR MINORITY SUPPLEMENTS**

FISCAL YEAR 2002*

	Applications	New Awards	Percent Awarded
NCCR	3	3	100%
NEI	15	15	100%
NHGRI	7	7	100%
NIAAA	8	8	100%
NIEHS	10	10	100%
NIBIB	1	1	100%
NIAMS	30	29	97%
NIMH	40	38	95%
NIGMS	103	94	91%
NINR	8	7	88%
NINDS	41	35	85%
NIDCD	13	11	85%
NCI	97	81	84%
NIDDK	84	70	83%
NIDA	38	31	82%
NIDCR	16	12	75%
NIAID	99	65	66%
NHLBI	120	78	65%
NIA	45	23	51%
NCCAM	2	1	50%
NICHD	49	19	39%
FIC	0	0	—
NCMHD	0	0	—
NLM	0	0	—
ALL ICs	829	638	77%

* UNAwarDED APPLICATIONS MAY HAVE BEEN PENDING AT THE END OF FY2002

**MINORITY SUPPLEMENT EXPENDITURES
AS A FRACTION OF EXPENDITURES FOR ELIGIBLE RESEARCH GRANT AWARDS***

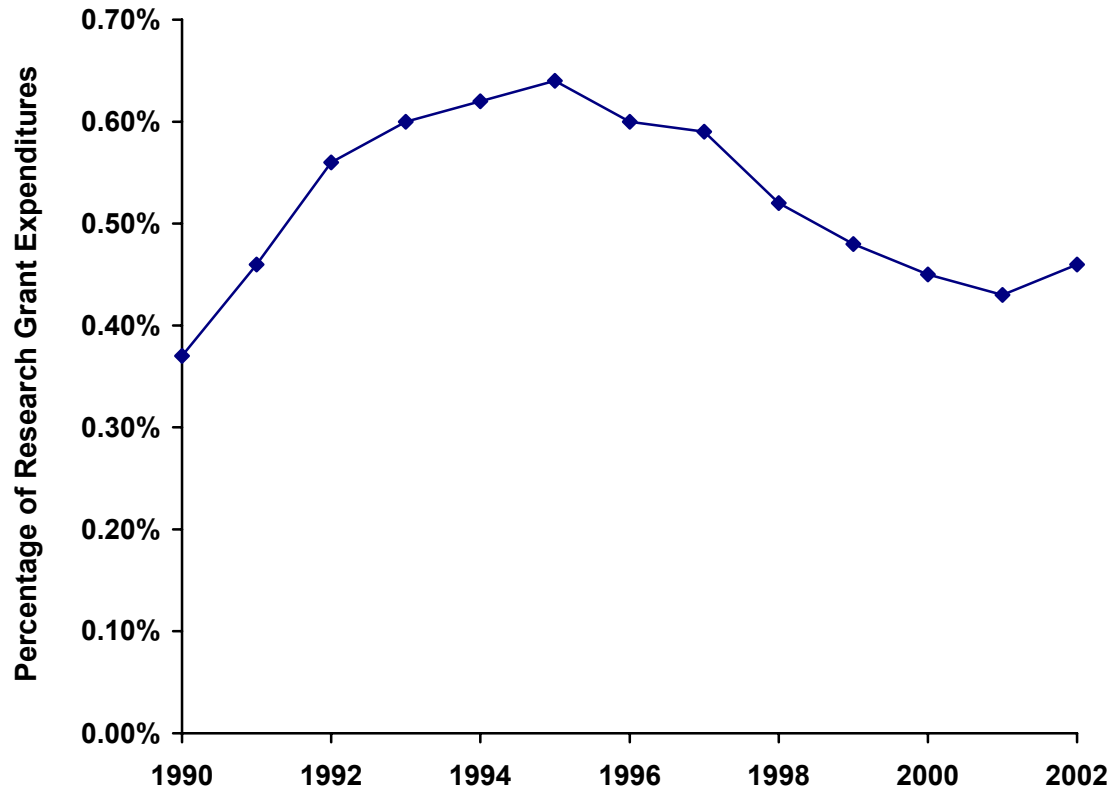
FISCAL YEAR 2002

	Supplement awards	All Eligible Awards	Percentage
NIDDK	\$9,924,843	\$1,140,526,448	0.87%
NIMH	\$6,489,999	\$830,485,039	0.78%
NINR	\$618,605	\$95,760,938	0.65%
NIDCR	\$1,280,952	\$219,989,861	0.58%
NHLBI	\$10,424,384	\$1,876,660,093	0.56%
NIAMS	\$1,723,426	\$314,145,451	0.55%
NIAAA	\$1,434,894	\$268,880,916	0.53%
NIEHS	\$1,141,798	\$244,493,645	0.47%
NIA	\$2,886,204	\$652,807,808	0.44%
NCI	\$10,408,359	\$2,408,098,727	0.43%
NIGMS	\$5,560,219	\$1,329,674,812	0.42%
NIDA	\$2,263,227	\$597,292,223	0.38%
NIAID	\$5,552,970	\$1,518,794,257	0.37%
NINDS	\$3,693,145	\$1,021,671,707	0.36%
NEI	\$1,371,032	\$445,859,995	0.31%
NICHD	\$2,227,218	\$757,721,321	0.29%
NHGRI	\$972,468	\$345,249,856	0.28%
NLM	\$60,192	\$21,977,570	0.27%
NIDCD	\$643,481	\$251,157,504	0.26%
NCRR	\$695,137	\$431,982,919	0.16%
NCCAM	\$68,990	\$66,708,908	0.10%
NIBIB	\$32,766	\$88,955,403	0.04%
FIC	\$0	\$19,788,964	0.00%
NCMHD	\$0	\$24,668,291	0.00%
ALL ICs	\$69,474,309	\$14,973,352,656	0.46%

*Grants eligible for Minority Supplements include: R01, R03, R15, R18,R21, R22, R24, R35, R37, P01, P20, P30, P40, P41, P50, P51, P60, U01, U19, U41, U42, U54.

NIH-WIDE TRENDS FOR MINORITY SUPPLEMENTS AS A PERCENTAGE OF EXPENDITURES FOR ELIGIBLE RESEARCH GRANT MECHANISMS

FISCAL YEARS 1990-2002



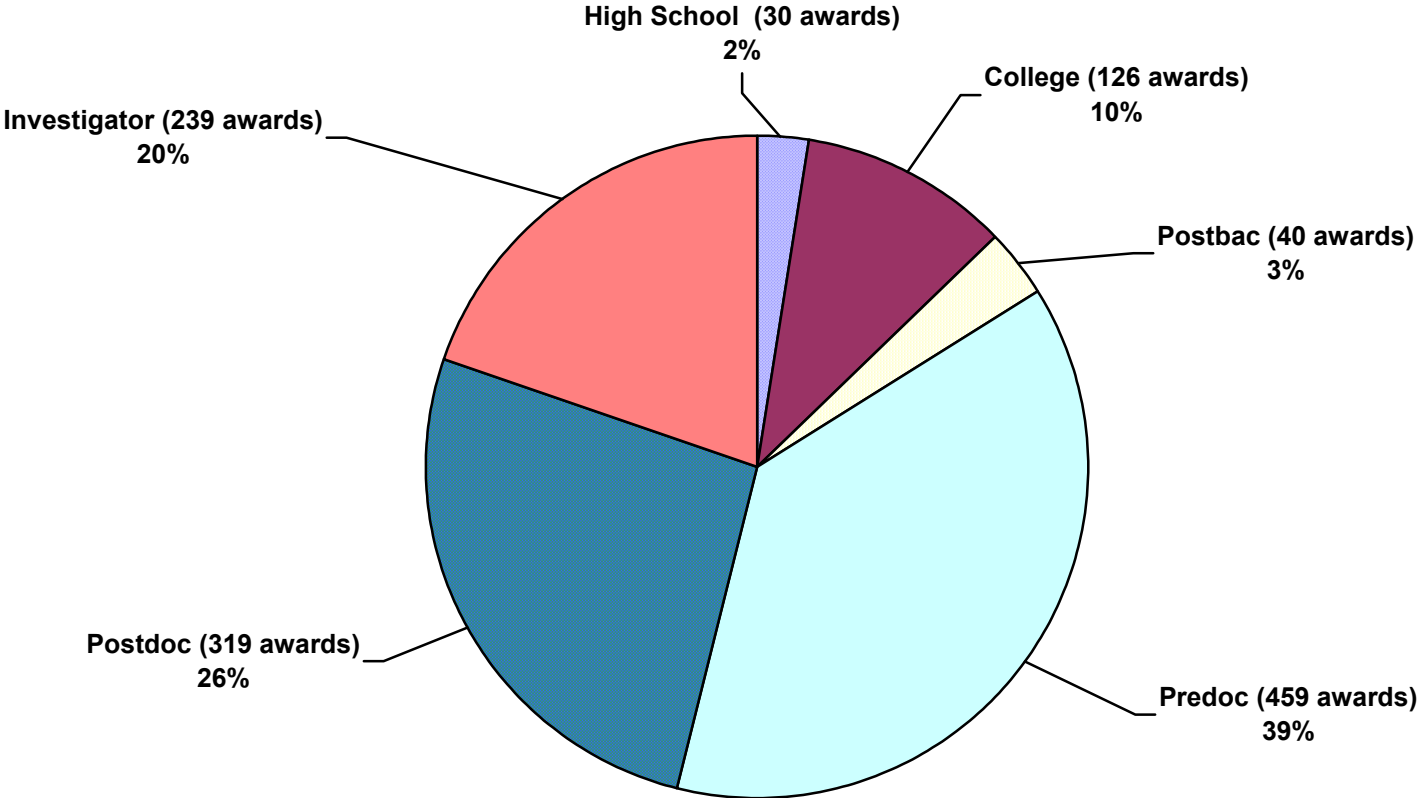
**CAREER LEVELS OF INDIVIDUALS APOINTED TO MINORITY SUPPLEMENTS
(ALL AWARDS, NEW AND COMPETING)**

FISCAL YEAR 2002

	High School	College	Postbac	Predoc	Postdoc	Investigator	Total
NCI	0	9	0	68	55	38	170
NHLBI	5	16	2	49	39	41	152
NIGMS	4	23	12	84	21	4	148
NIAID	2	12	6	45	47	14	126
NIDDK	5	13	16	25	20	30	109
NIMH	2	3	0	37	32	26	100
NINDS	2	9	0	28	18	7	64
NIDA	0	5	0	30	13	6	54
NICHD	0	10	2	13	7	15	47
NIAMS	7	7	1	14	11	4	44
NIA	0	4	0	12	9	17	42
NEI	0	4	1	9	8	6	28
NIDCR	0	1	0	10	5	7	23
NIAAA	0	1	0	3	11	7	22
NIDCD	0	3	0	13	5	0	21
NIEHS	2	2	0	6	5	5	20
NHGRI	1	3	0	3	4	4	15
NCRR	0	0	0	0	9	3	12
NINR	0	1	0	6	0	5	12
NCCAM	0	0	0	2	0	0	2
NIBIB	0	0	0	1	0	0	1
NLM	0	0	0	1	0	0	1
FIC	0	0	0	0	0	0	0
NCMHD	0	0	0	0	0	0	0
ALL ICs	30	126	40	459	319	239	1213

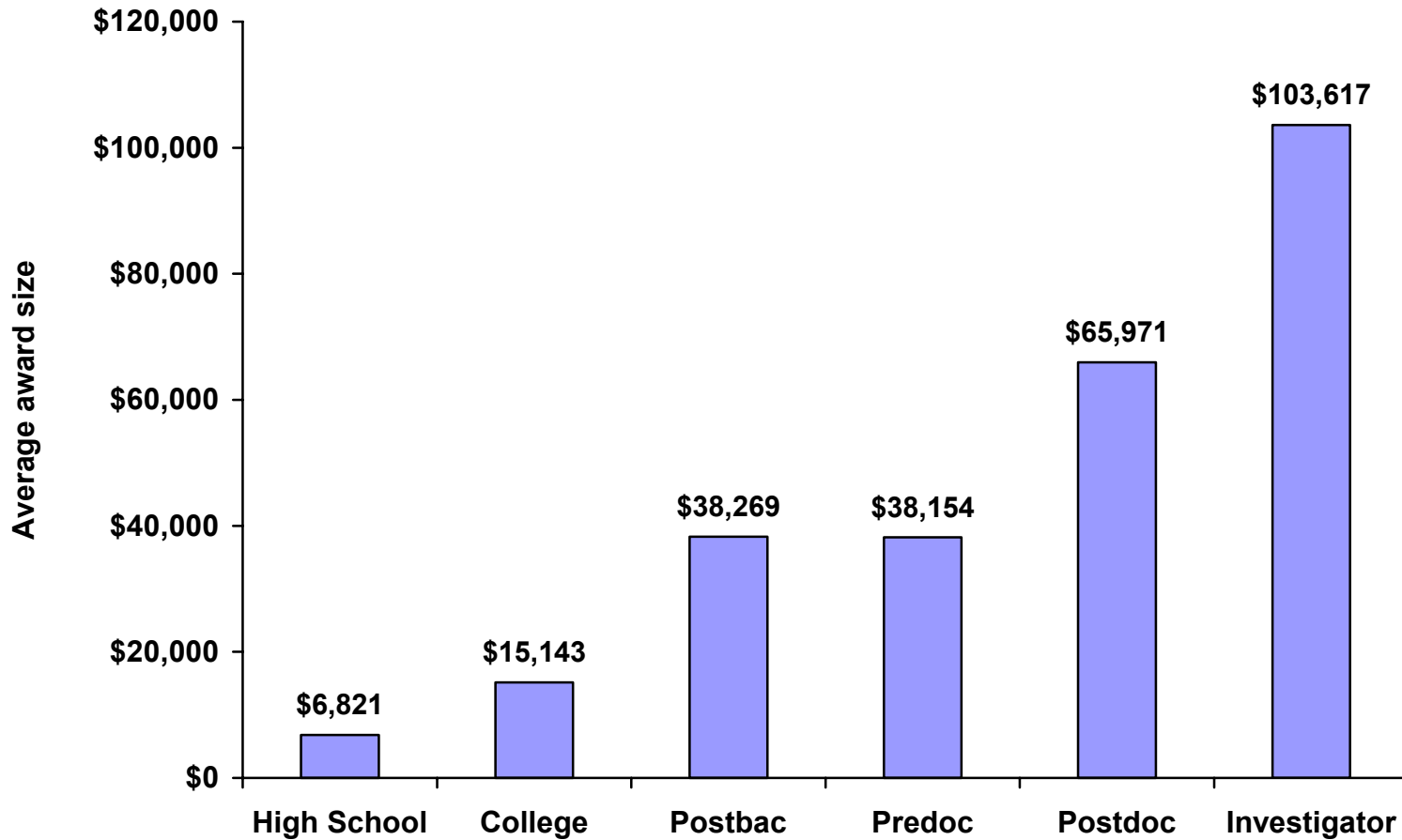
CAREER LEVELS OF INDIVIDUALS APPOINTED TO MINORITY SUPPLEMENTS

FY 2002



AVERAGE AWARD BY CAREER LEVEL FOR MINORITY SUPPLEMENTS

Fiscal year 2002



**RACIAL/ETHNIC CLASSIFICATION OF INDIVIDUALS
APPOINTED TO MINORITY SUPPLEMENTS
(ALL AWARDS, NEW AND CONTINUING)**

FISCAL YEAR 2002

	African American	Hispanic	Native American	Pacific Islander	Other	Total
NCI	86	75	7	2	0	170
NHLBI	99	51	1	1	0	152
NIGMS	67	73	1	7	0	148
NIAID	59	58	1	8	0	126
NIDDK	51	48	1	6	3	109
NIMH	35	41	2	0	22	100
NINDS	28	25	3	8	0	64
NIDA	26	19	5	0	4	54
NICHD	25	16	2	4	0	47
NIAMS	28	13	1	1	1	44
NIA	24	11	2	2	3	42
NEI	15	7	0	3	3	28
NIDCR	18	3	0	2	0	23
NIAAA	14	8	0	0	0	22
NIDCD	12	6	1	0	2	21
NIEHS	6	10	2	2	0	20
NHGRI	6	2	1	1	5	15
NCRR	4	8	0	0	0	12
NINR	8	3	0	0	1	12
NCCAM	1	1	0	0	0	2
NIBIB	0	1	0	0	0	1
NLM	1	0	0	0	0	1
FIC	0	0	0	0	0	0
NCMHD	0	0	0	0	0	0
ALL ICs	613	479	30	47	44	1213

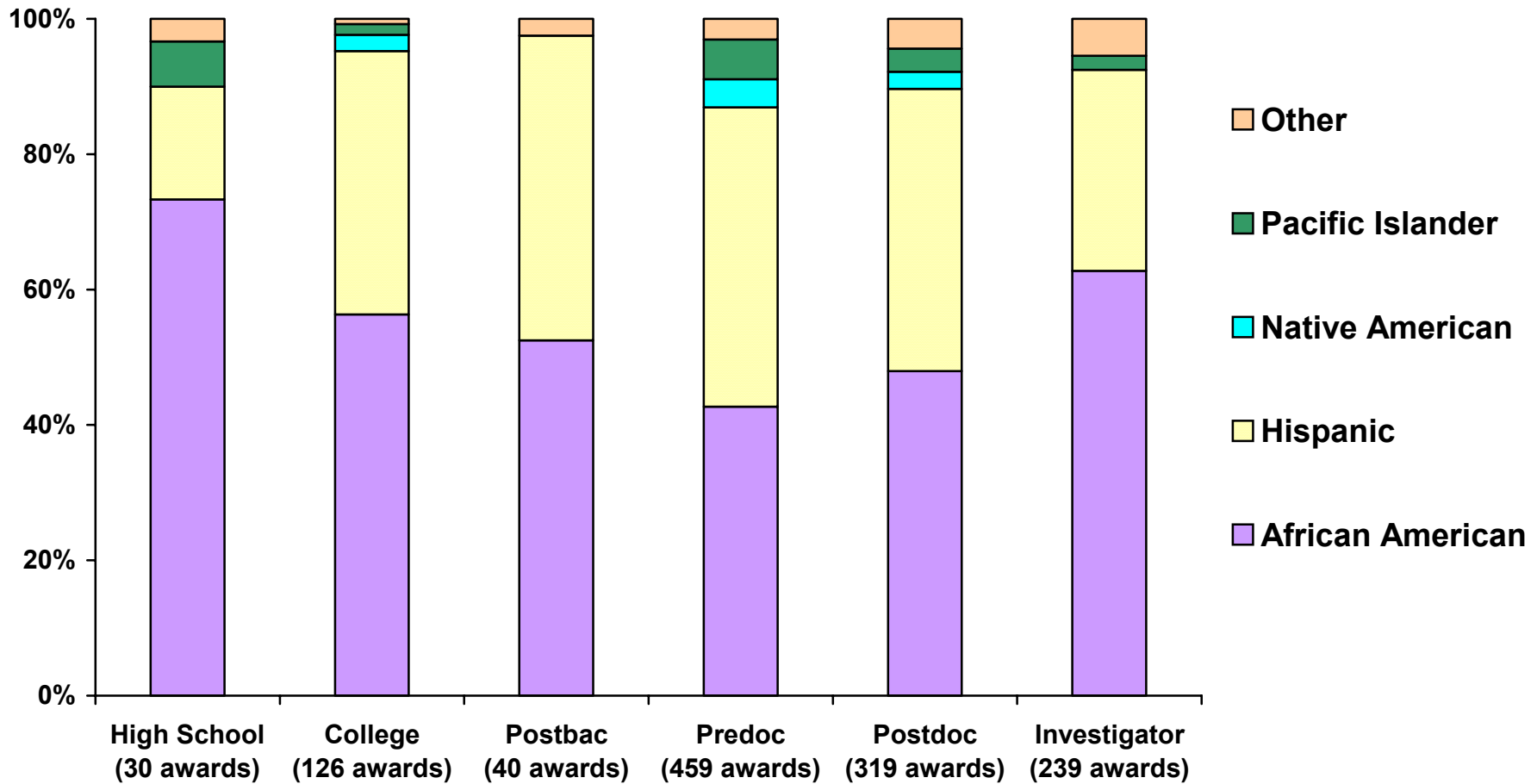
**RACE/ETHNICITY BY CAREER LEVEL OF INDIVIDUALS
APPOINTED TO MINORITY SUPPLEMENTS**

FISCAL YEAR 2002

	High School	College	Postbac	Predoc	Postdoc	Investigator	Total
African American	22	71	21	196	153	150	613
Hispanic	5	49	18	203	133	71	479
Native American	0	3	0	19	8	0	30
Pacific Islander	2	2	0	27	11	5	47
Other	1	1	1	14	14	13	44
All Groups	30	126	40	459	319	239	1213

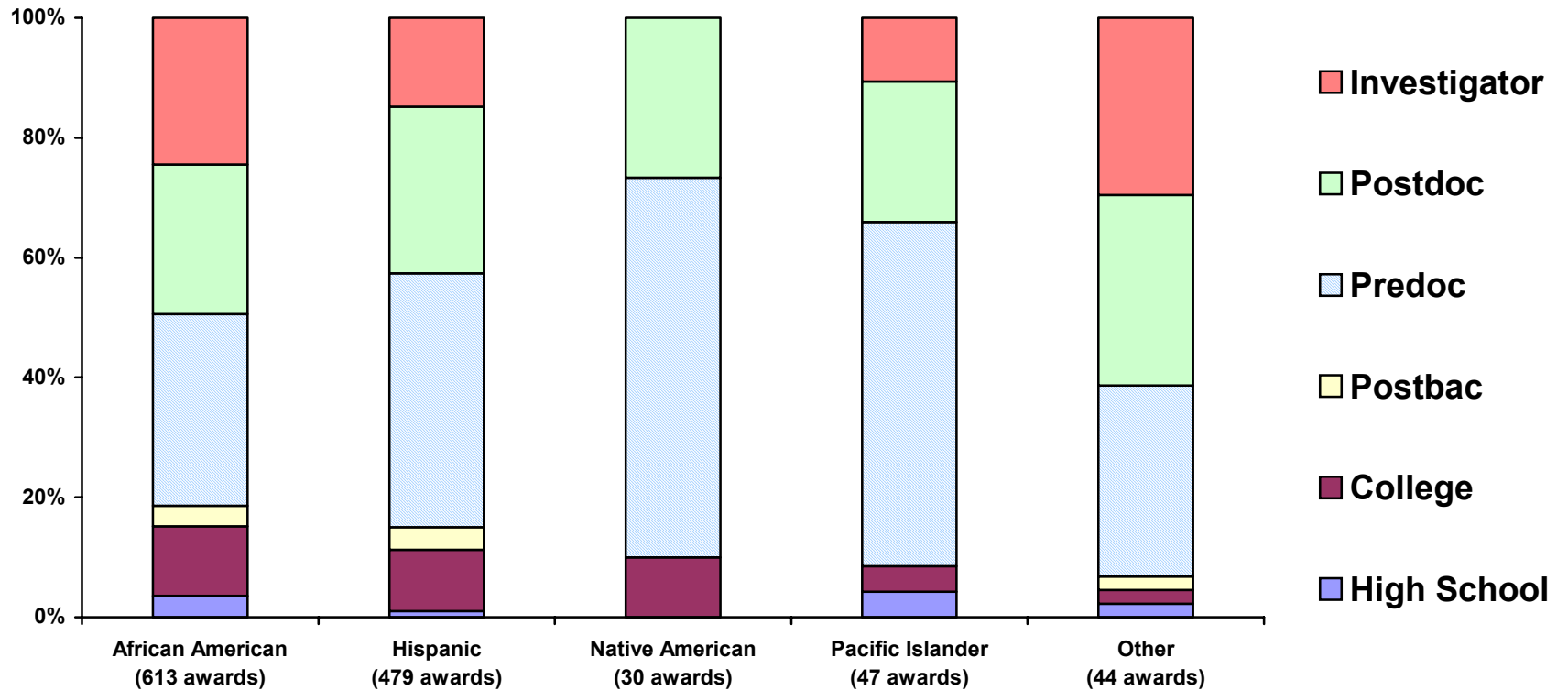
RACE/ETHNICITY BY CAREER LEVEL OF INDIVIDUALS APPOINTED TO MINORITY SUPPLEMENTS

FISCAL YEAR 2002



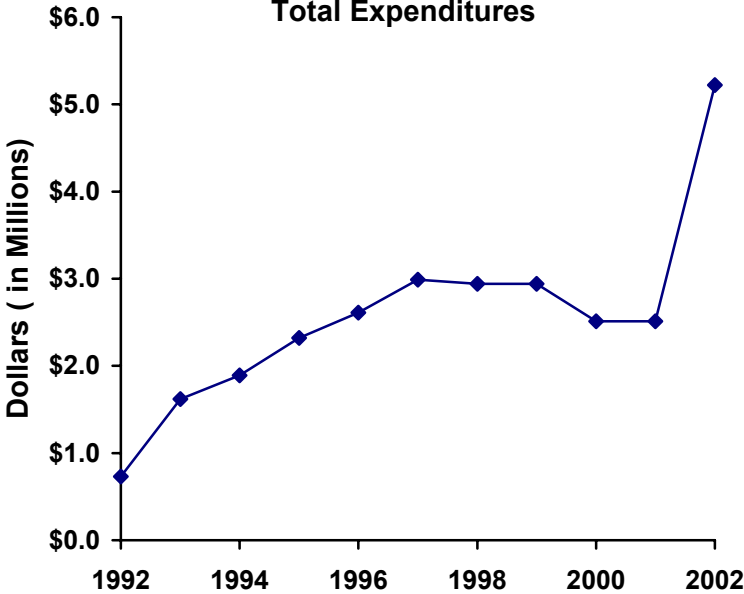
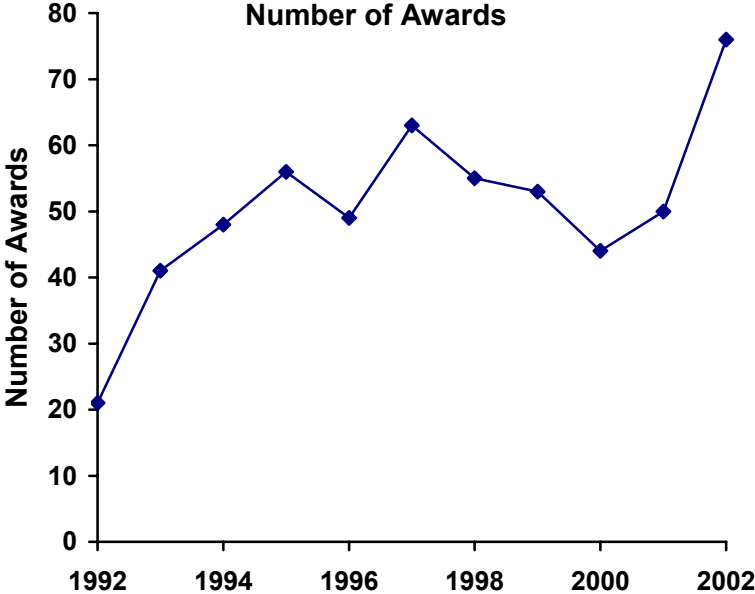
CAREER LEVEL BY RACE/ETHNICITY OF INDIVIDUALS APPOINTED TO MINORITY SUPPLEMENTS

FISCAL YEAR 2002



TRENDS IN DISABILITY SUPPLEMENTS

FISCAL YEARS 1992-2002



DISABILITY SUPPLEMENTS AWARDED

FISCAL YEAR 2002

	New Awards		Continuing Awards		All Awards	
	Number	Amount	Number	Amount	Number	Amount
NINDS	3	\$293,130	5	\$432,604	8	\$725,734
NIDDK	4	\$455,947	3	\$231,937	7	\$687,884
NIA	4	\$540,233	1	\$132,054	5	\$672,287
NICHD	4	\$295,068	1	\$190,490	5	\$485,558
NEI	4	\$166,706	4	\$278,845	8	\$445,551
NIGMS	4	\$205,824	5	\$161,662	9	\$367,486
NHLBI	2	\$191,640	3	\$149,198	5	\$340,838
NIAID	4	\$152,437	3	\$159,747	7	\$312,184
NCI	2	\$159,386	3	\$144,074	5	\$303,460
NIMH	2	\$121,891	3	\$156,626	5	\$278,517
NIDCR	0	\$0	2	\$233,855	2	\$233,855
NIDCD	5	\$128,181	2	\$47,633	7	\$175,814
NIAMS	1	\$15,421	1	\$116,850	2	\$132,271
NCRR	0	\$0	1	\$86,114	1	\$86,114
FIC	0	\$0	0	\$0	0	\$0
NCCAM	0	\$0	0	\$0	0	\$0
NCMHD	0	\$0	0	\$0	0	\$0
NHGRI	0	\$0	0	\$0	0	\$0
NIAAA	0	\$0	0	\$0	0	\$0
NIBIB	0	\$0	0	\$0	0	\$0
NIDA	0	\$0	0	\$0	0	\$0
NIEHS	0	\$0	0	\$0	0	\$0
NINR	0	\$0	0	\$0	0	\$0
NLM	0	\$0	0	\$0	0	\$0
ALL ICs	39	\$2,725,864	37	\$2,521,689	76	\$5,247,553

AWARD RATE OF NEW APPLICATIONS FOR DISABILITY SUPPLEMENTS

FISCAL YEAR 2002*

	Applications	New Awards	Percent Awarded
NCI	2	2	100%
NEI	4	4	100%
NHLBI	2	2	100%
NIAID	4	4	100%
NIAMS	1	1	100%
NIDCD	5	5	100%
NIDDK	4	4	100%
NIGMS	4	4	100%
NIMH	2	2	100%
NICHD	5	4	80%
NINDS	4	3	75%
NIA	8	4	50%
FIC	0	0	—
NCCAM	0	0	—
NCMHD	0	0	—
NCRR	0	0	—
NHGRI	0	0	—
NIAAA	0	0	—
NIBIB	0	0	—
NIDA	0	0	—
NIDCR	0	0	—
NIEHS	0	0	—
NINR	0	0	—
NLM	0	0	—
ALL ICs	45	39	87%

*Unawarded applications may have been pending at the end of the fiscal year.

**TYPE OF DISABILITY BY CAREER LEVEL FOR
INDIVIDUALS APPOINTED TO DISABILITY SUPPLEMENTS
(ALL AWARDS, NEW AND CONTINUING)**

FISCAL YEAR 2002

	High School	College	Postbac	Predoc	Postdoc	Investigator	Total
Speech Impairment	0	0	0	2	0	0	2
Hearing Impairment	0	2	0	5	3	3	13
Vision Impairment	0	0	2	5	1	2	10
Missing Extremities	0	0	0	0	1	1	2
Ortho Impairments	0	0	0	0	2	4	6
Partial Paralysis	0	0	0	7	5	4	16
Complete Paralysis	0	0	0	0	3	0	3
Other Impairments	0	1	0	12	6	5	24
TOTAL	0	3	2	31	21	19	76