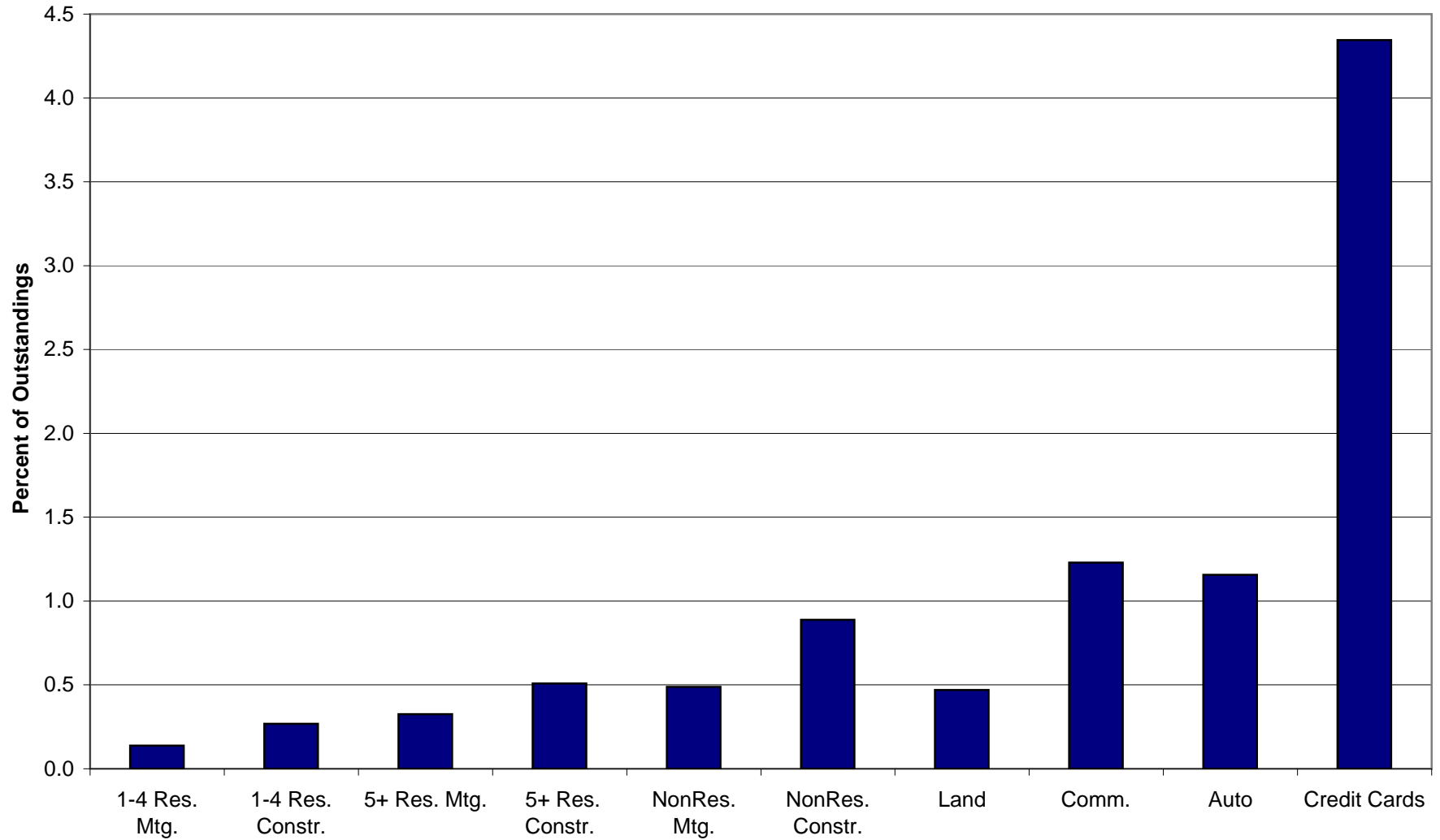


# Acquisition, Development and Construction (AD&C) Loan Performance Data

Compiled by:  
Regulatory and Housing Policy Area  
National Association of Home Builders

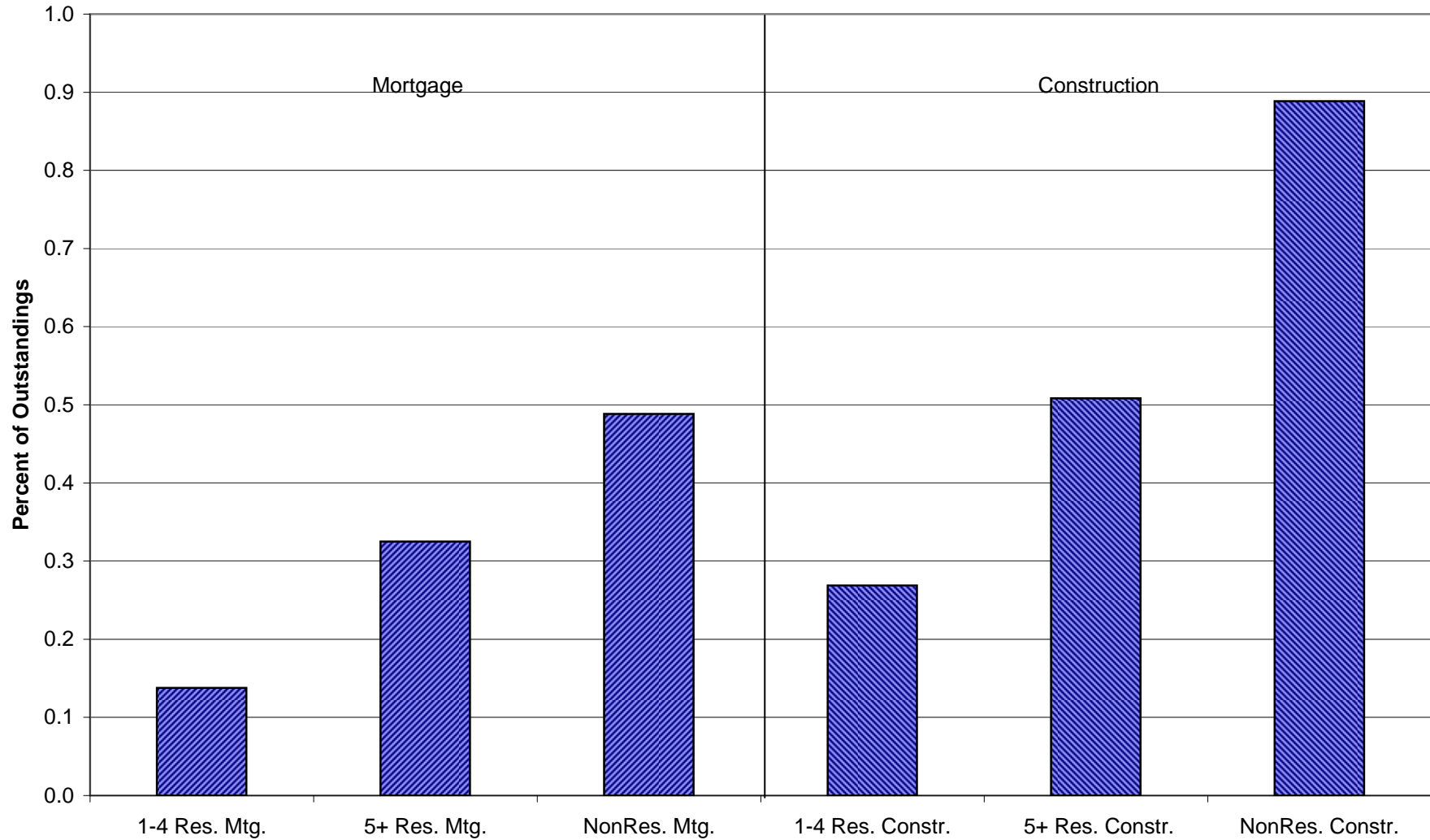


**Comparison of Net Chargeoff Rates by Loan Type for All OTS Thrifts**  
Annual Averages, 1990-2007



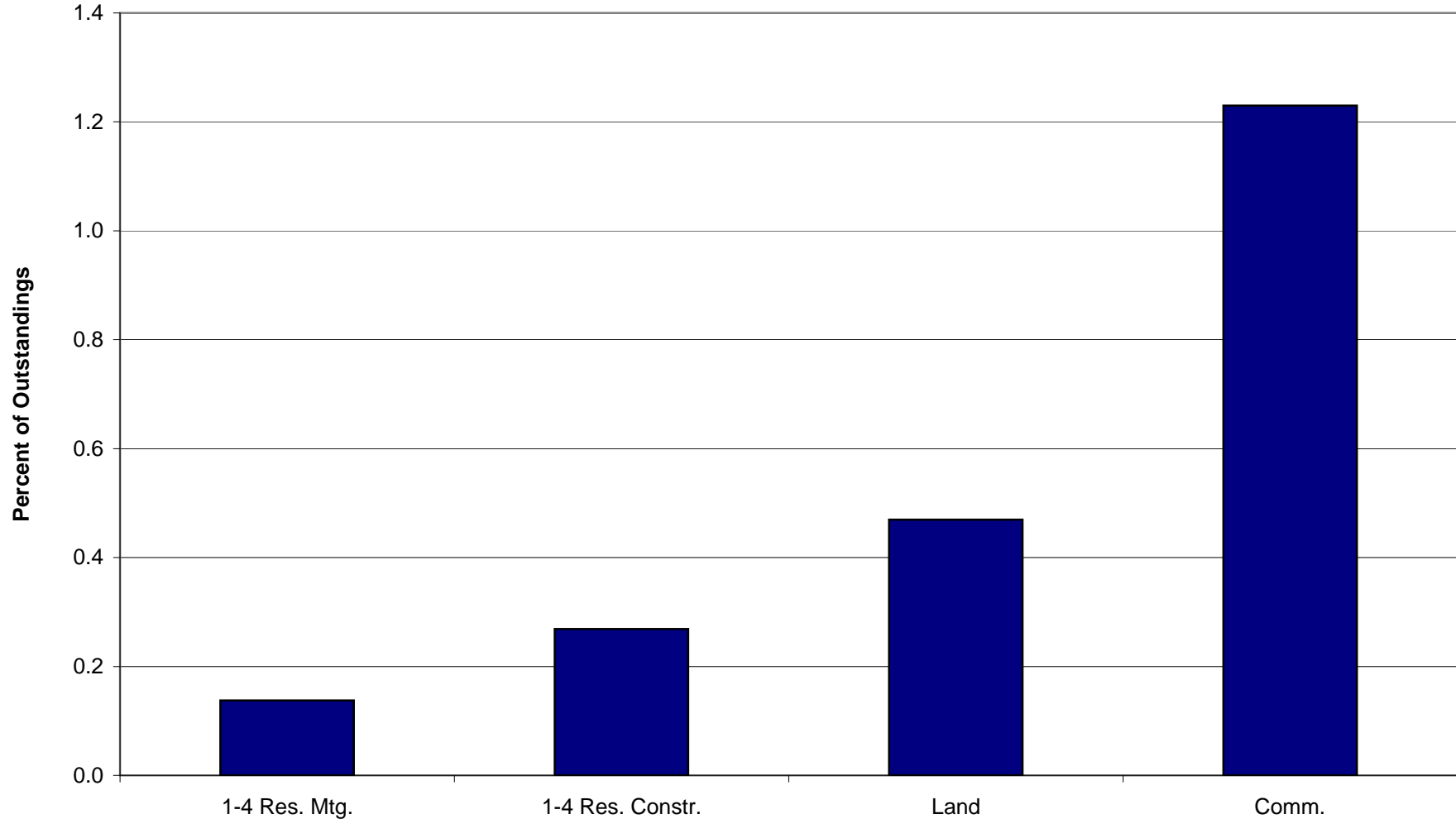
Thrift Net Chargeoffs as Percent of Average Outstanding Loans  
Source: Office of Thrift Supervision, Compiled by NAHB

### Comparison of Mortgage and Construction Loan Net Chargeoff Rates Annual Averages, 1990-2007



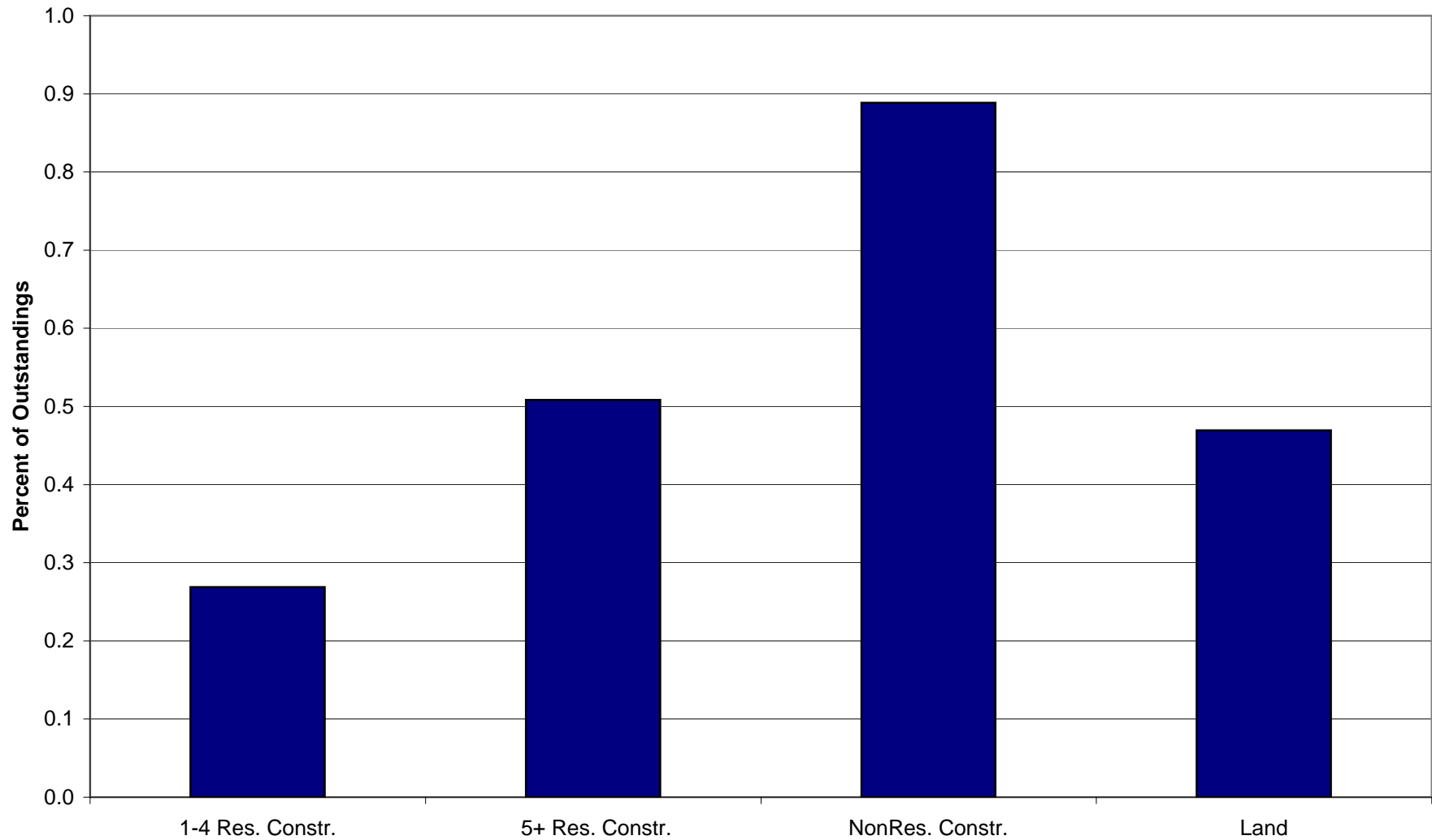
Thrift Net Chargeoffs as Percent of Average Outstanding Loans  
Source: Office of Thrift Supervision, Compiled by NAHB

**Home Mortgage and Construction Loan Performance  
Compared to Land and Commercial Loans**  
Annual Averages, 1990-2007



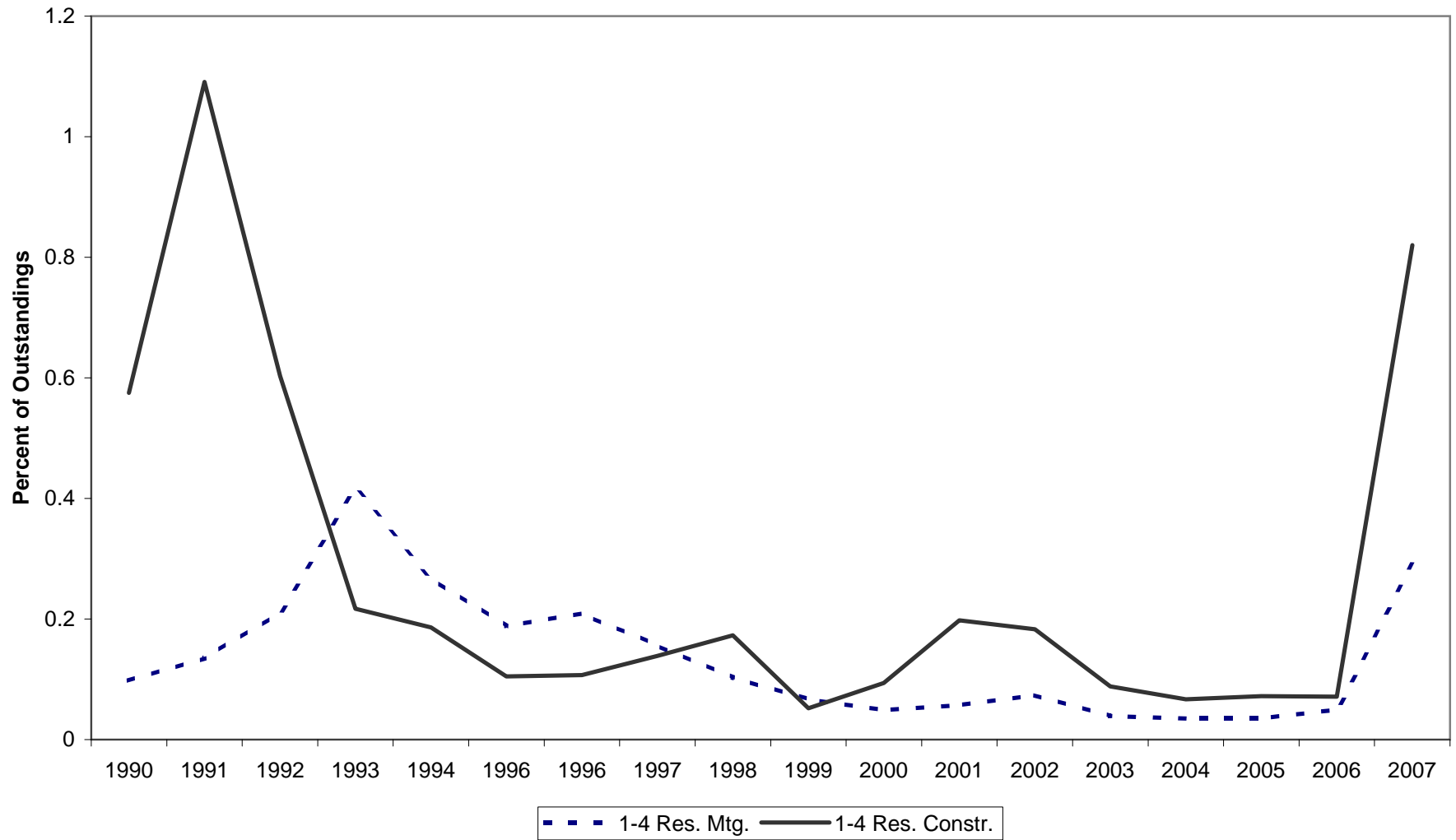
Thrift Net Chargeoffs as Percent of Average Outstanding Loans  
Source: Office of Thrift Supervision, Compiled by NAHB

**Comparison of Construction and Land Loan Net Chargeoff Rates**  
Annual Averages, 1990-2007



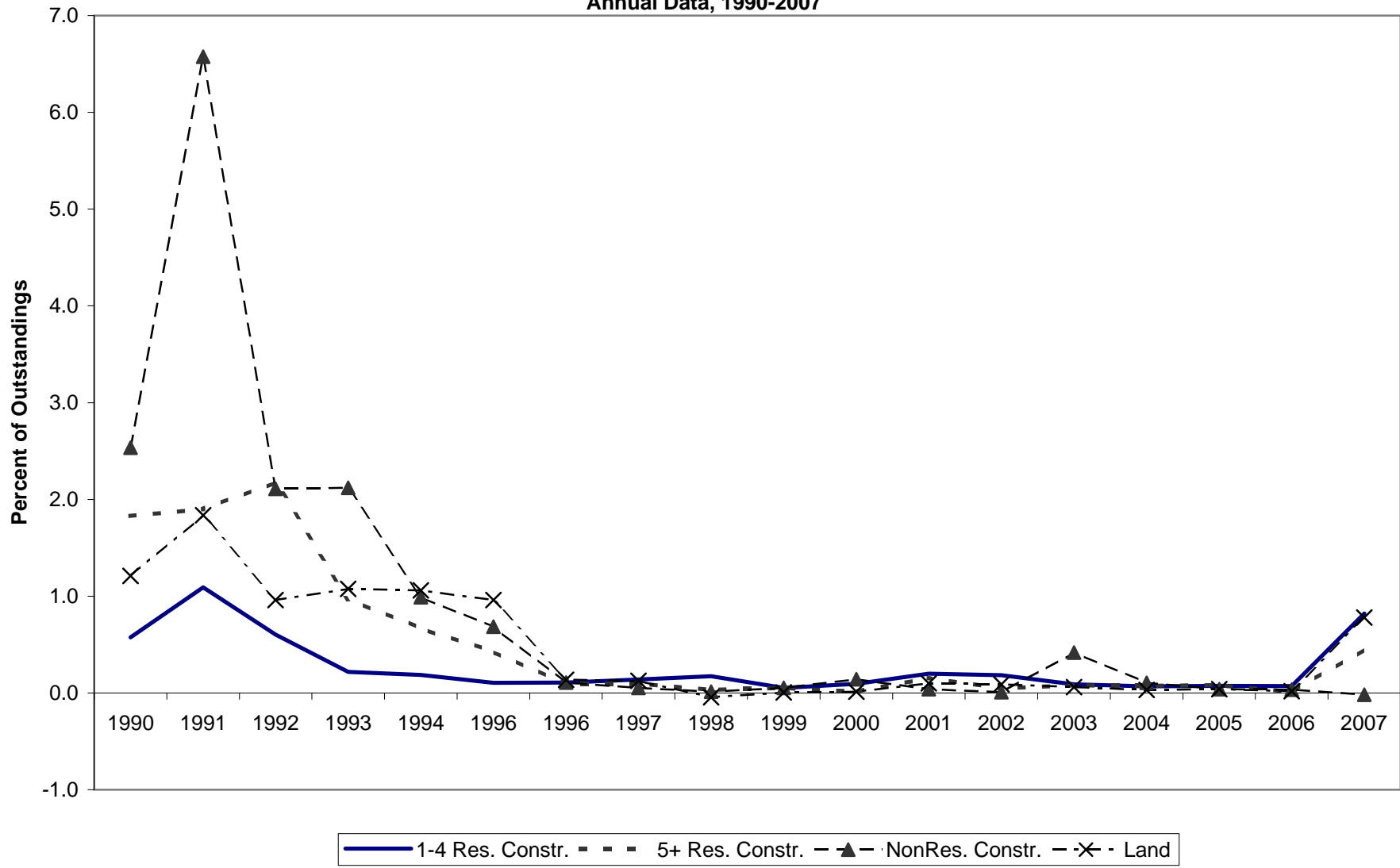
Thrift Net Chargeoffs as Percent of Average Outstanding Loans  
Source: Office of Thrift Supervision, Compiled by NAHB

**Home Mortgage and Construction Loan Performance**  
**Thrift Net Chargeoffs as Percent of Average Outstanding Loans**  
**Annual Data, 1990-2007**



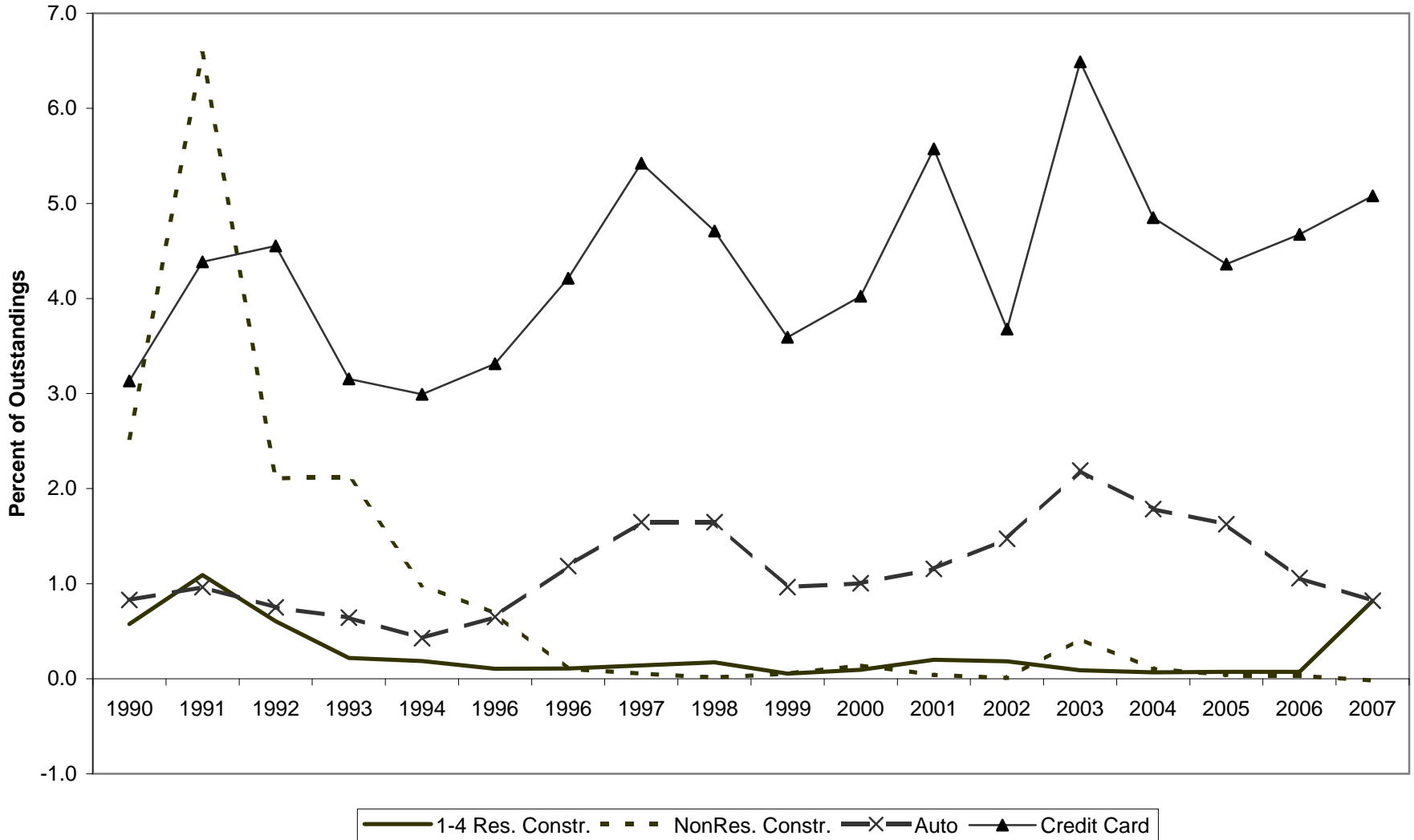
Source: Office of Thrift Supervision, Compiled by NAHB

**Comparison of Construction and Land Loan Net Chargeoff Rates**  
**Thrift Net Chargeoffs as Percent of Average Outstanding Loans**  
**Annual Data, 1990-2007**



Source: Office of Thrift Supervision, Compiled by NAHB

**Performance of Home Construction Loans Relative to Other Loan Types**  
**Thrift Net Chargeoffs as Percent of Average Outstanding Loans**  
**Annual Data, 1990-2007**



Source: Office of Thrift Supervision, Compiled by NAHB



Net Chargeoff as a Percentage of Average Loan Amount

All OTS Thrifts

Annualized from Quarterly Data

Year	Percent of 1-4 Res. Mtg. Mtg. Loans	Percent of 1-4 Res. Constr. Loans	Percent of 5+ Res. Mtg. Mtg. Loans	Percent of 5+ Res. Constr. Loans	Percent of NonRes. Mtg. Mtg. Loans	Percent of NonRes. Constr Constr. Loans	Percent of Land Loans	Percent of Comm. Loans	Percent of Auto Loans	Percent of Credit Card Loans
1990	0.098	0.575	0.835	1.829	1.389	2.533	1.208	1.310	0.829	3.131
1991	0.135	1.091	0.610	1.898	1.166	6.574	1.836	2.190	0.963	4.386
1992	0.211	0.603	0.724	2.176	1.321	2.110	0.960	1.455	0.751	4.554
1993	0.416	0.217	0.844	0.971	1.629	2.119	1.076	3.067	0.641	3.154
1994	0.268	0.186	1.446	0.667	1.168	0.989	1.059	0.902	0.426	2.993
1996	0.188	0.105	0.644	0.427	0.781	0.684	0.959	0.674	0.651	3.312
1996	0.209	0.107	0.524	0.088	0.392	0.106	0.135	0.314	1.185	4.212
1997	0.156	0.139	0.183	0.098	0.084	0.052	0.126	0.382	1.646	5.424
1998	0.103	0.173	0.068	0.032	0.087	0.014	-0.045	0.447	1.648	4.711
1999	0.067	0.052	-0.069	0.053	0.042	0.052	0.006	0.473	0.964	3.592
2000	0.049	0.094	-0.033	0.013	0.040	0.141	0.012	0.946	1.004	4.024
2001	0.057	0.198	0.001	0.155	0.188	0.040	0.100	1.348	1.155	5.575
2002	0.074	0.183	-0.002	0.048	0.086	0.007	0.089	2.125	1.472	3.679
2003	0.039	0.088	0.007	0.078	0.081	0.418	0.061	1.247	2.191	6.489
2004	0.035	0.067	0.013	0.073	0.113	0.104	0.032	1.387	1.785	4.851
2005	0.035	0.072	0.013	0.081	0.071	0.039	0.038	1.470	1.626	4.362
2006	0.05	0.071	0.012	0.011	0.070	0.033	0.019	1.158	1.059	4.675
2007	0.29	0.82	0.030	0.45	0.080	-0.020	0.780	1.240	0.820	5.080
<b>Average</b>	0.138	0.269	0.325	0.508	0.488	0.889	0.470	1.230	1.156	4.345