


Lake Tahoe Basin Multi-Jurisdictional Fuel Reduction Plan

**Lake Tahoe Basin
Multi-Jurisdictional
Fuel Reduction and
Wildfire Prevention
Strategy
10 Year Plan**

United States
Department of
Agriculture
Forest Service
Tahoe Regional
Planning Agency
Nevada Tahoe
Resource Team
Nevada Division of
Forestry
Nevada Division of
State Lands
Nevada Fire State
Councils
California
Department of
Forestry and Fire
Protection
California Tahoe
Conservancy
California State
Parks
North Tahoe
Fire Protection
District
North Lake Tahoe
Fire Protection
District
Tahoe-Oguzins Fire
Protection District
Lain Valley Fire
Protection District
Meadow Bay Fire
Protection District
South Lake Tahoe
Fire Department
Palmer Lake Fire
Department



White Pine County Legislation

- *“development and implementation of comprehensive, cost-effective, multijurisdictional hazardous fuels reduction and wildfire prevention plans (including sustainable biomass and biofuels energy development and production activities) for the Lake Tahoe Basin (to be developed in conjunction with the Tahoe Regional Planning Agency), the Carson Range in Douglas and Washoe Counties and Carson City in the State, and the Spring Mountains in the State, that are--*

Cooperating Agencies

- Lake Tahoe Basin Management Unit
- Tahoe Regional Planning Agency
- Nevada Tahoe Resource Team
- Nevada Division of Forestry
- Nevada Division of State Lands
- Nevada Fire Safe Council
- CAL FIRE
- California Tahoe Conservancy
- California State Parks
- North Tahoe Fire Protection District
- North Lake Tahoe Fire Protection District
- Tahoe-Douglas Fire Protection District
- Lake Valley Fire Protection District
- South Lake Tahoe Fire Department
- Fallen Leaf Fire Department
- Meeks Bay Fire Protection District

Purpose of This Plan

- Identify the proposed treatments.
- Facilitate communication and cooperation among agencies.
- Identify potential challenges to implementation.

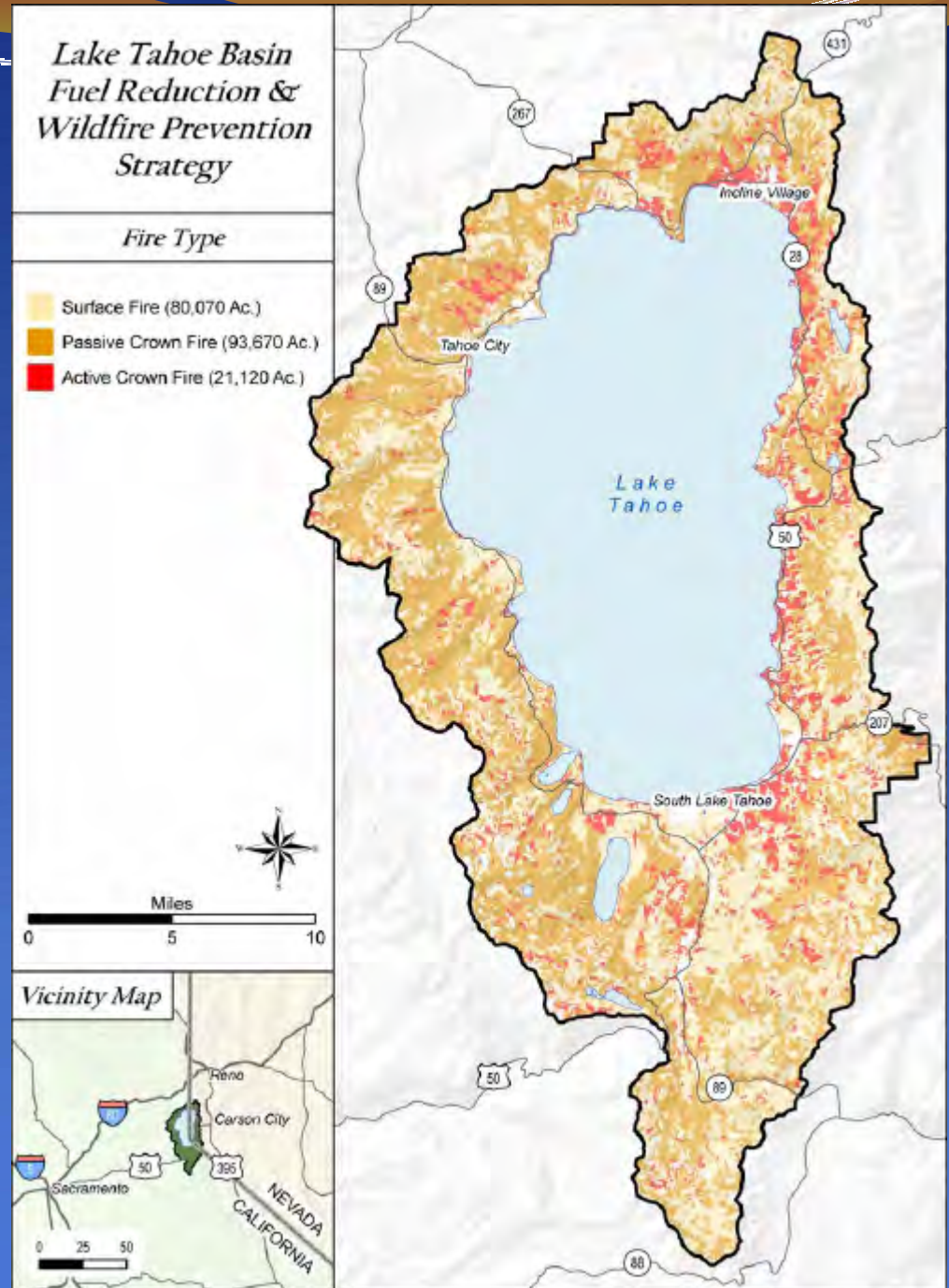
Comprehensive Protection

- Defensible Space Around Homes/Home Construction
- Community Defensible Space
- Public Lands/General Forest

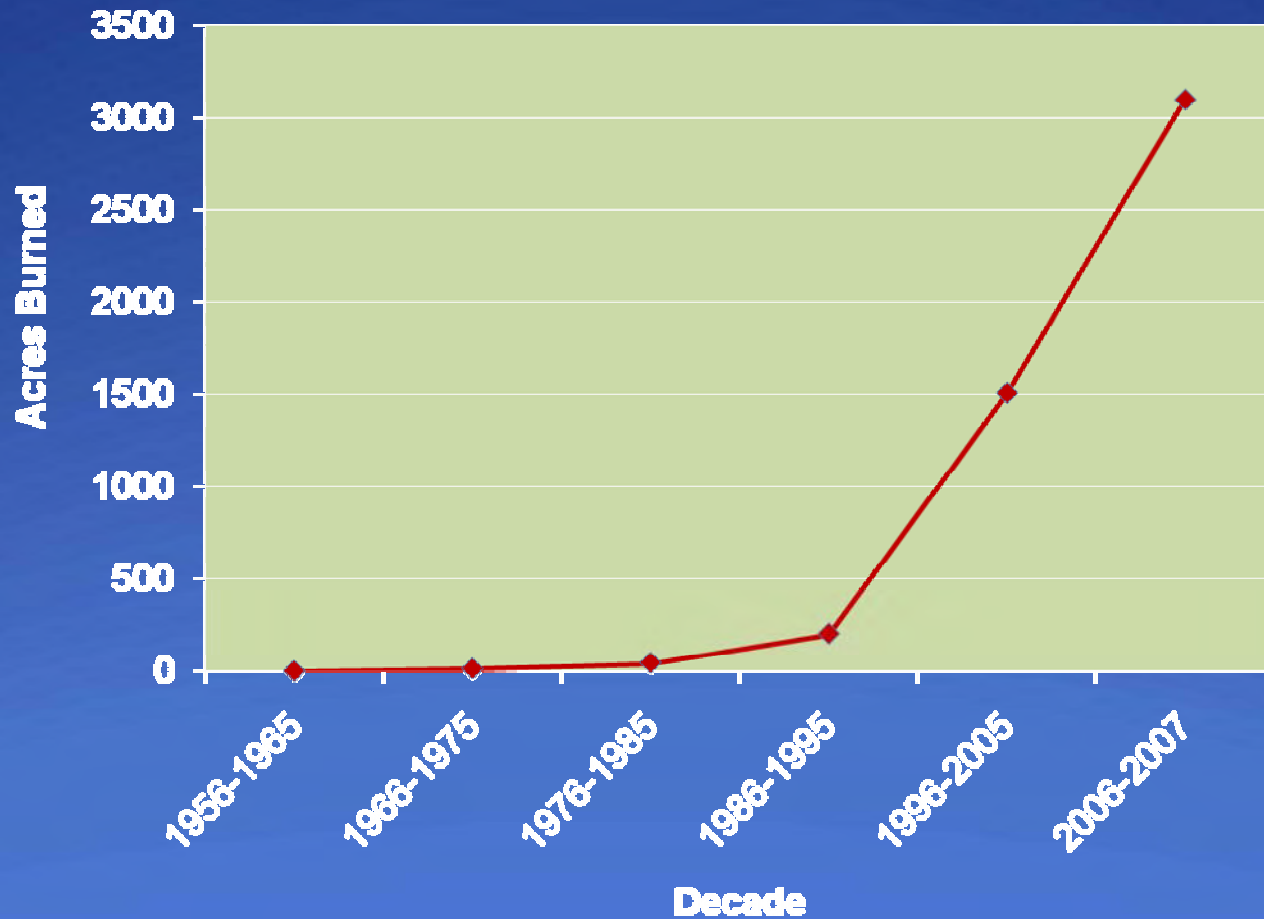
Current Conditions



- 60% of Basin's forests were predicted to support a crown fire.
- 76% of fuel plots in the WUI were predicted to support a crown fire.
- 70% of homes had inadequate defensible space.



The number of acres burned by wildfires in the Lake Tahoe Basin, 1956-2007



- *“Manage the forests rather than let them burn and devastate Lake Tahoe’s clarity”*
(Charles Goldman, Ph. D., Professor, U. C. Davis)

- *“The fuel problem will take care of itself, one way or the other.”* (Elwood Miller, Ph.D., retired forestry professor, UNR)

Accomplishments

- Fire Districts prepared three Community Wildfire Protection Plans and offered free chipping.
- TRPA consolidated those plans into a single plan, focused on the WUI.
- Land management agencies reduced fuel hazards on >13,000 acres since 2000.
- Nevada Fire Safe Council established 25 Fire Safe Chapters.
- LTBMU completed its Stewardship and Fireshed Assessment.
- CAL FIRE prepares annual plans for El Dorado and Placer Counties.

Desired Conditions:

Low densities of large trees

Low growing and scattered
understory

Increased structural diversity

Variable age classes of
woody riparian vegetation



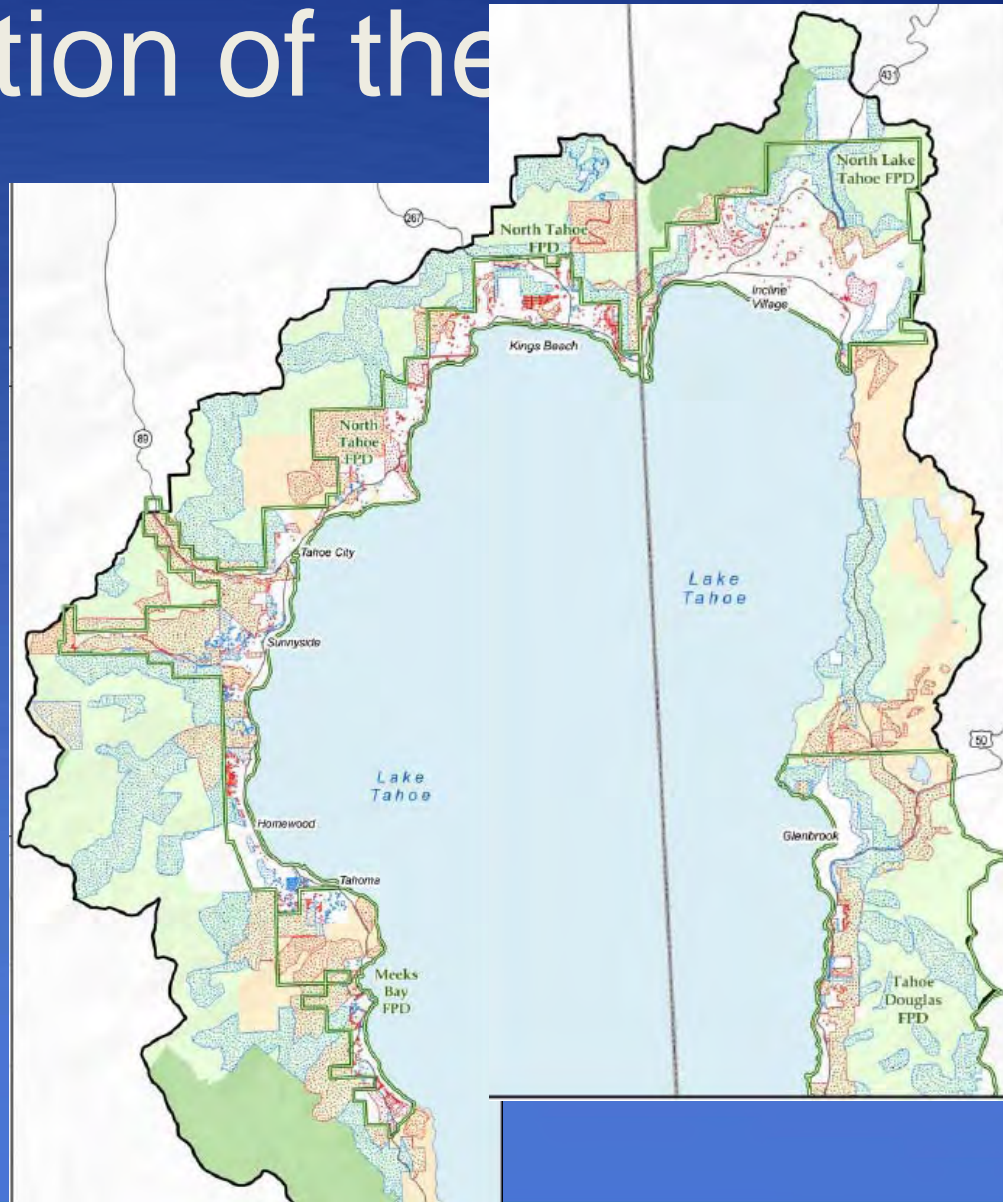
Recently Treated Stands with < 2 foot flame lengths



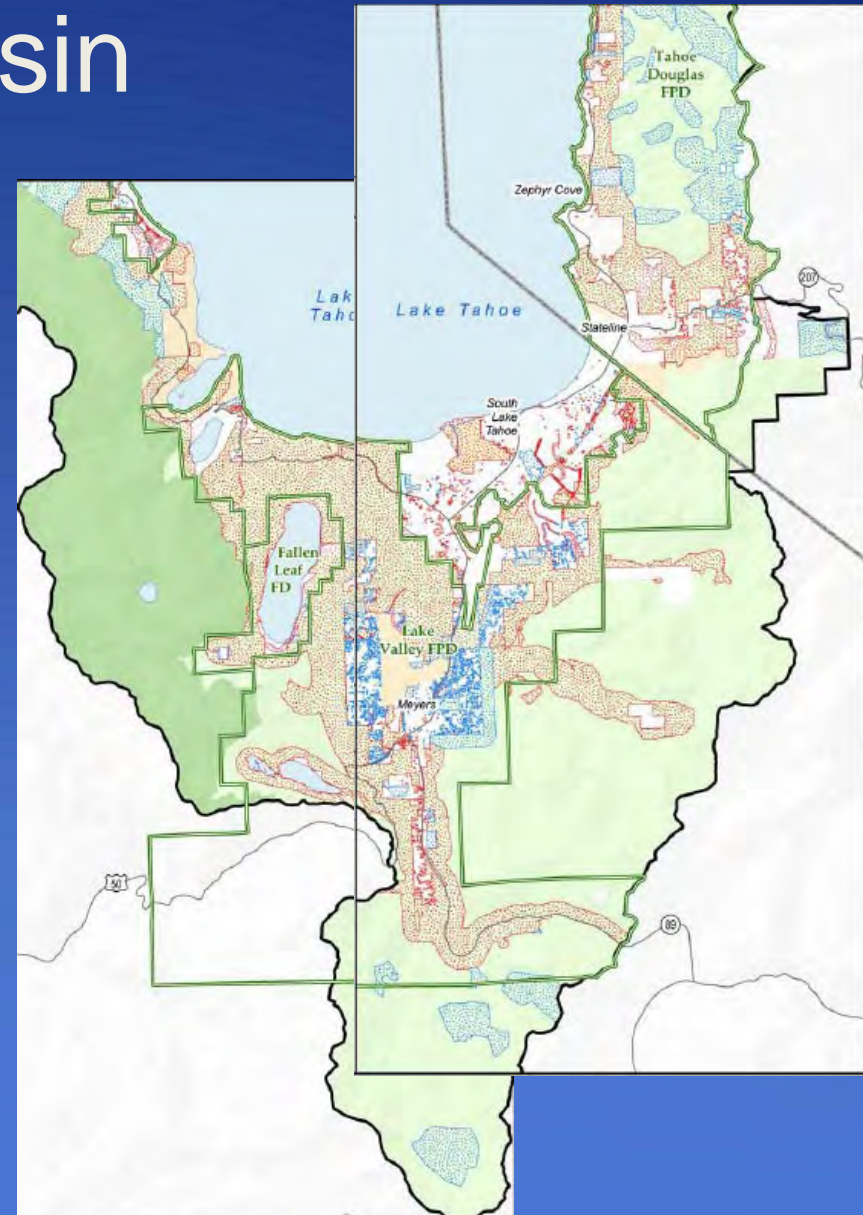
Focus of Treatments

- Priority is to implement treatments in the WUI.
- Approximately 50,000 acres of initial treatments.
- Approximately 18,000 acres of maintenance treatments.

Proposed Treatments in Northern Portion of the



Proposed Treatments in Southern Portion of the Basin

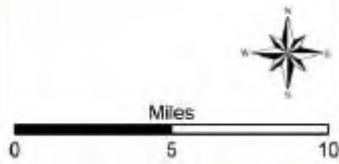


Treatment Schedule

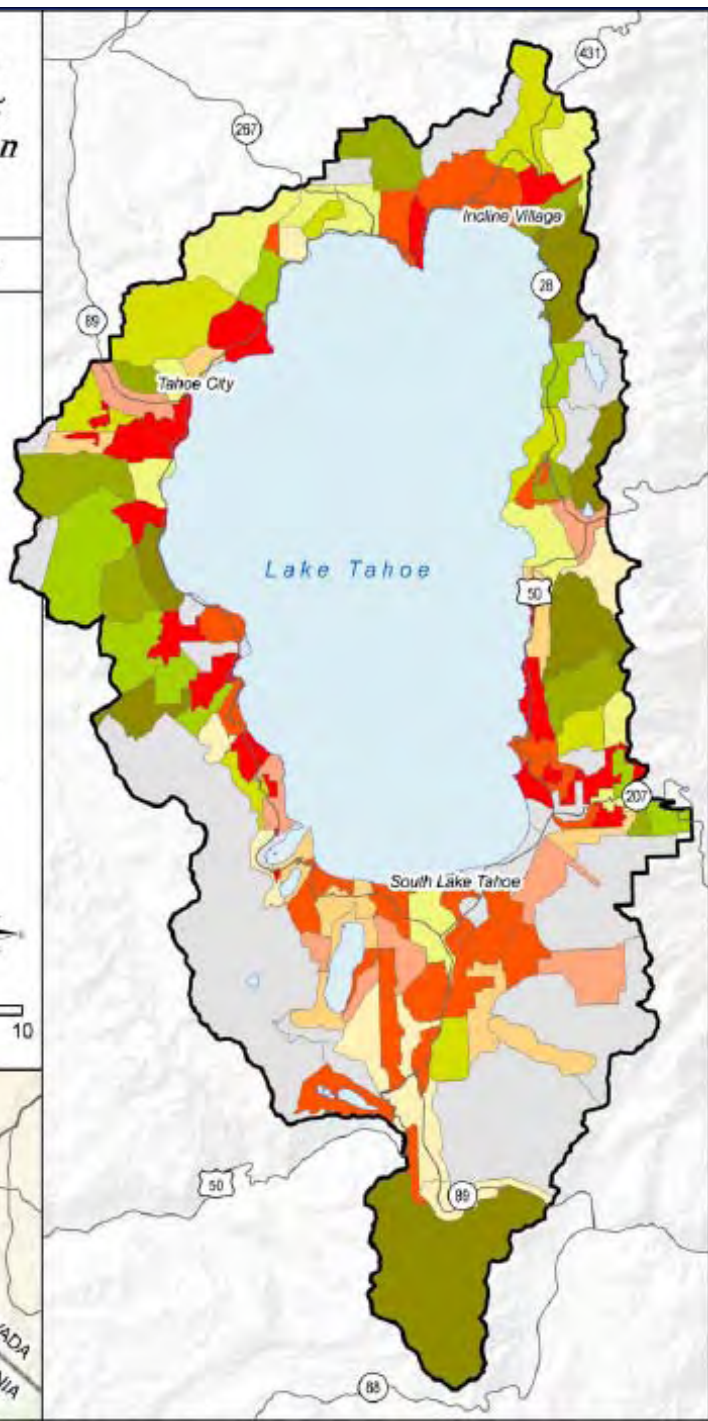
Lake Tahoe Basin Fuel Reduction & Wildfire Prevention Strategy

SFA Scheduling Units

Year of Treatment



Vicinity Map



Administrative Responsibilities of Proposed Projects

- 56,000 acres Lake Tahoe Basin Management Unit
- 6,220 acres California Tahoe Conservancy
- 3,300 acres private and local government
- 1,700 acres California State Parks
- 902 acres Nevada State Parks/Division of Lands
- 68,122 acres



Strategic Decisions

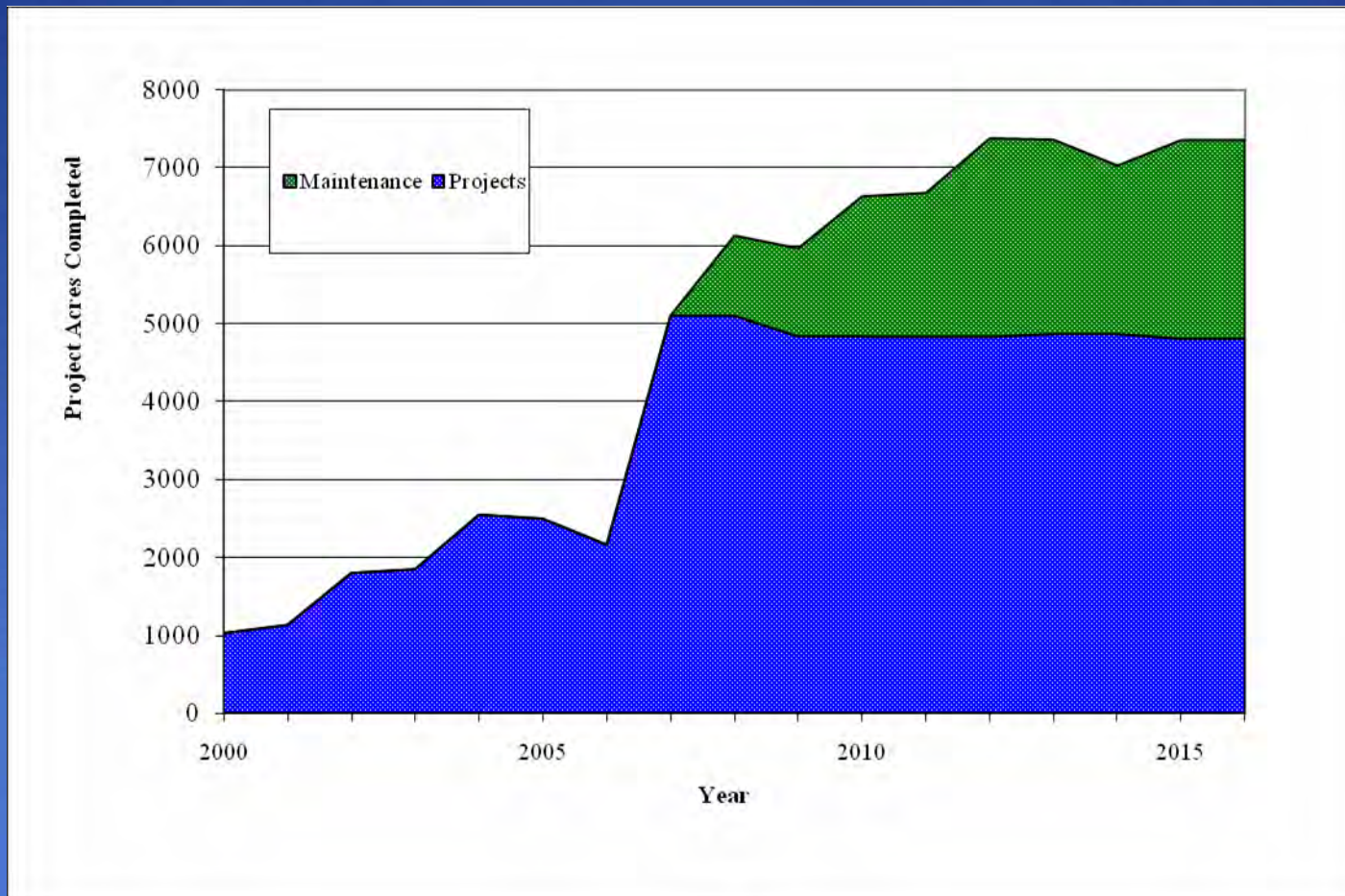


Partnerships

The Success of the this plan depends on

- Agency Partnerships
- Community Partnerships. It is the responsibility of individuals to create and maintain defensible space to contribute to a fire safe environment.

270% Increase in Annual Accomplishments



Selection of Appropriate and Cost Effective Treatments

- Mechanical thinning
- Helicopter logging
- Hand thinning
- Pruning
- Mastication
- Prescribed Burning

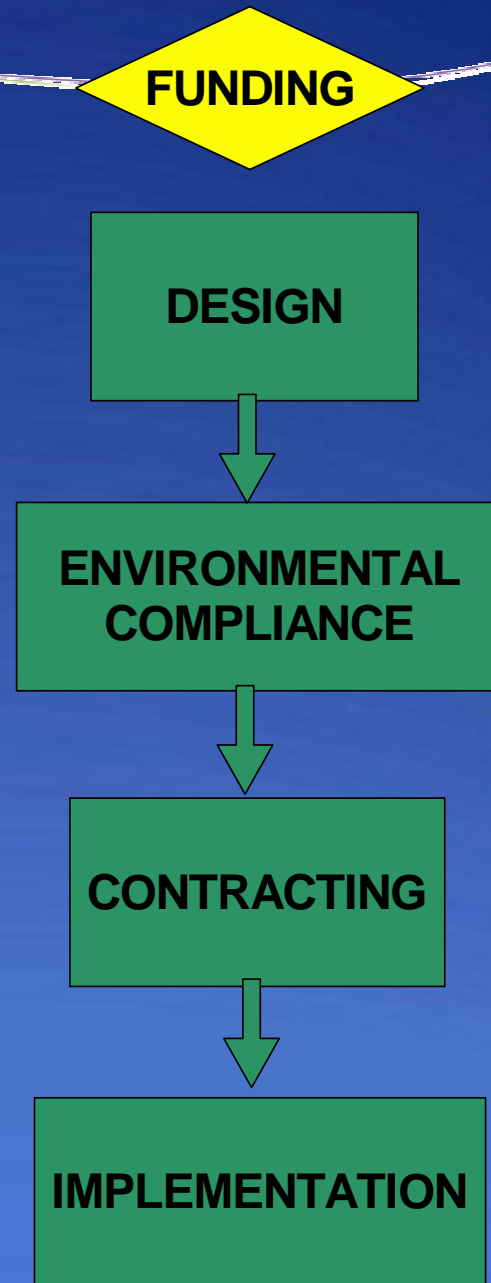
Utilization of Forest Products

- Biomass
 - Reduce amount of prescribed burning
 - Convert forest waste to energy or heat
- Small logs (< 12 inches diameter)
- Large logs

Known Challenges will Affect Implementation

- Operational constraints such as current staffing levels and availability of mechanical operators.
- Regulatory constraints such as availability of burn days in California, SEZs.
- Administrative constraints such as contracting projects with multiple ownership.

Getting Projects Completed



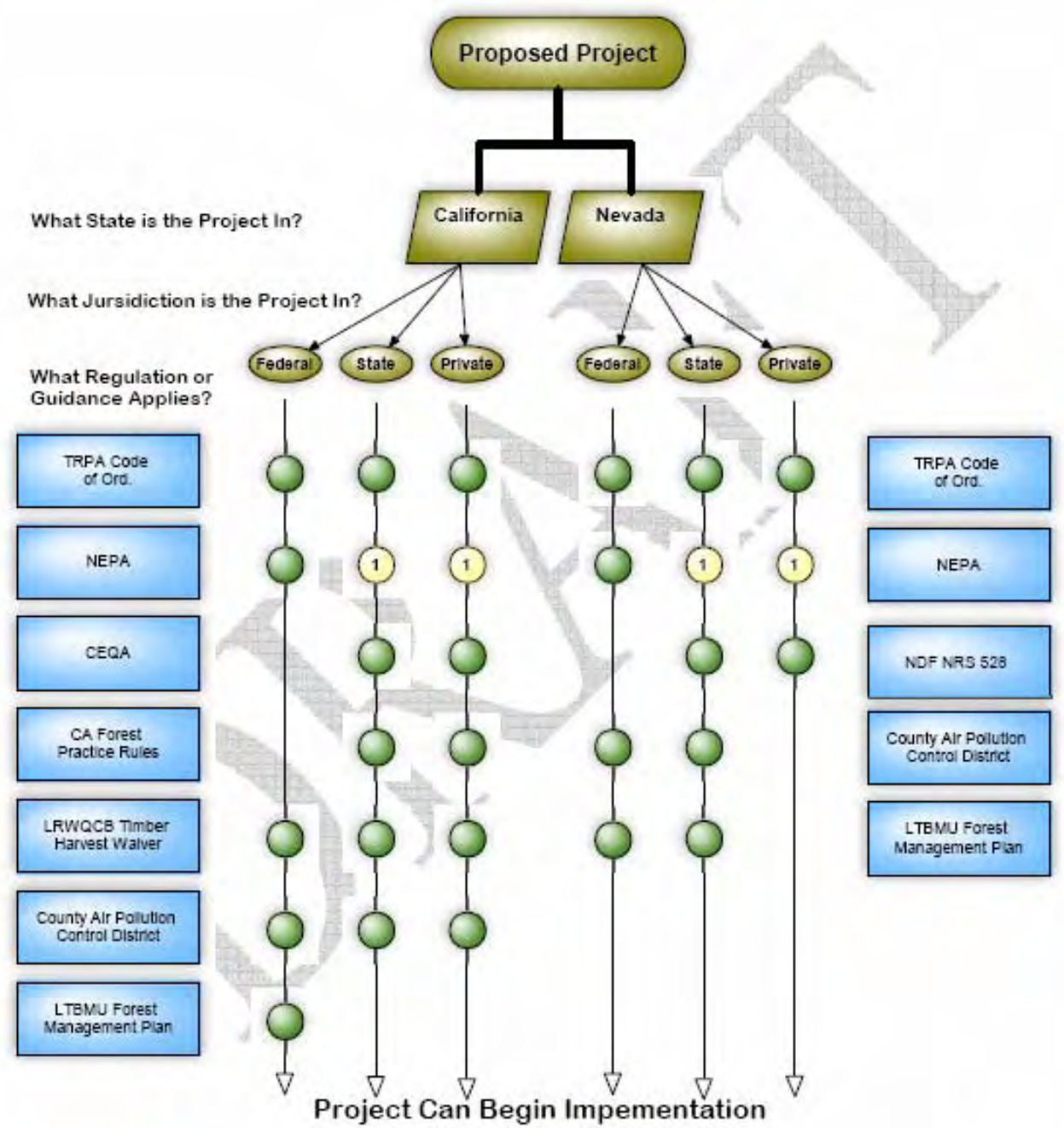


Diagram Key

● - Regulation/Guidance Applies to Project ① - Applies if Federal Funding is Involved

Thank You

