

## Welcome to Boulder, Colorado!

The City of Boulder (pop. 101,547) is nestled under the foothills of the Rocky Mountains on the western reach of the Great Plains. At an elevation of 5,400 feet (1,646 meters) it will be sure to take your breath away. Boulder is well known for

research institutes (NOAA, NOAA-NIST, NCAR/UCAR), more than 300 days of sunshine a year, the University of Colorado at Boulder, its progressive land use planning, and large population of professional and recreational athletes. Oh, and don't forget the beautiful backdrop of the mountains just out your back door.

Although the days will be jam packed with educational activities, there will be plenty of time for you to explore a bit of Boulder. This little guide is meant to orient you to the basic of what's available and how to get you there. Look to the provided materials from the City of Boulder for more details. During this week, you might just be able to climb an 8,300 foot peak (a 10 minute bus ride from the hotel), stroll through Boulder's Pearl Street Mall and be treated to street musicians and performers, enjoy a meal on at a roof top restaurant with a view of the Flatirons (the front range mountains), take in a rodeo at the Boulder County Fair, or even catch a baseball game of the Colorado Rockies in Denver.

### **Web links:**

Boulder Convention and Visitors Bureau- <http://www.bouldercoloradousa.com/>

Boulder Daily Camera – Boulder's local newspaper- [www.dailycamera.com](http://www.dailycamera.com)

Visiting Boulder – Your guide to visiting Boulder, Colorado - <http://www.visitingboulder.com>

Boulder Community Network- Detailed community information- <http://bcn.boulder.co.us/>



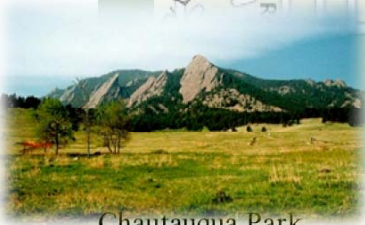
# The Lay of the Land



Pearl Street Mall



Boulder Outlook Hotel & Suites



Chautauqua Park

— Pearl Street Mall –Downtown walking street—  
Restaurants, stores, bars, street performers, etc.



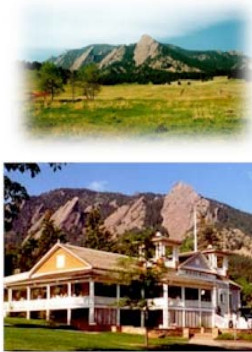
Boulder's newest upscale Outdoor Mall. .8miles (1.3km) north of Boulder Outlook on sidewalk. Restaurants, art galleries, and outdoor shopping areas. 10-15 minute walk from the hotel.

### Pearl Street Mall



Boulder's famous pedestrian mall. Visit local restaurants, shops, bars, and street performers. 10-15 min bus ride from Boulder Outlook.

### Chautauqua Park



The Chautauqua House and Park is a historic Boulder tradition. Many world renowned groups perform in an open air venue. Just beyond the auditorium, access many trails of varying difficulty from Chautauqua. After you have worked up an appetite, have a relaxing meal on the extensive balcony of the Chautauqua house restaurant. (Reservations recommended) FREE 10-15 min bus ride from Boulder Outlook. 303-440-7666

Chautauqua information: [www.chautauqua.com](http://www.chautauqua.com)

Other cultural activities:

Boulder County Fair: [www.bouldercountyfair.com](http://www.bouldercountyfair.com)

Colorado Rockies Baseball: [www.coloradorockies.com](http://www.coloradorockies.com)



## Directions to Chautauqua



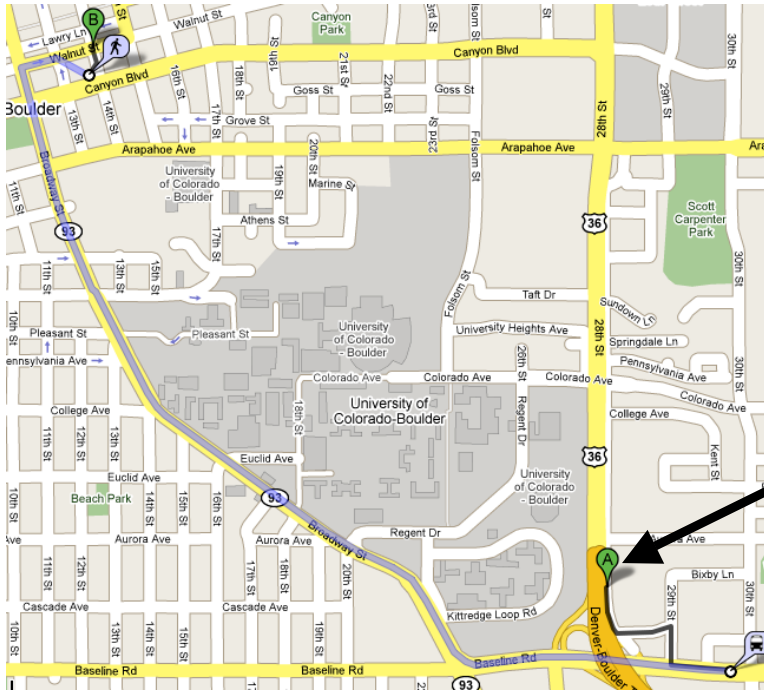
Take a FREE bus to access many of Boulder's beautiful hiking trails! This bus runs every 15 minutes! Find the **HOP2 Chautauqua** bus stop on 27<sup>th</sup> way just south of Baseline.

Bus Stop

\*Bus Stops = Yellow Dots



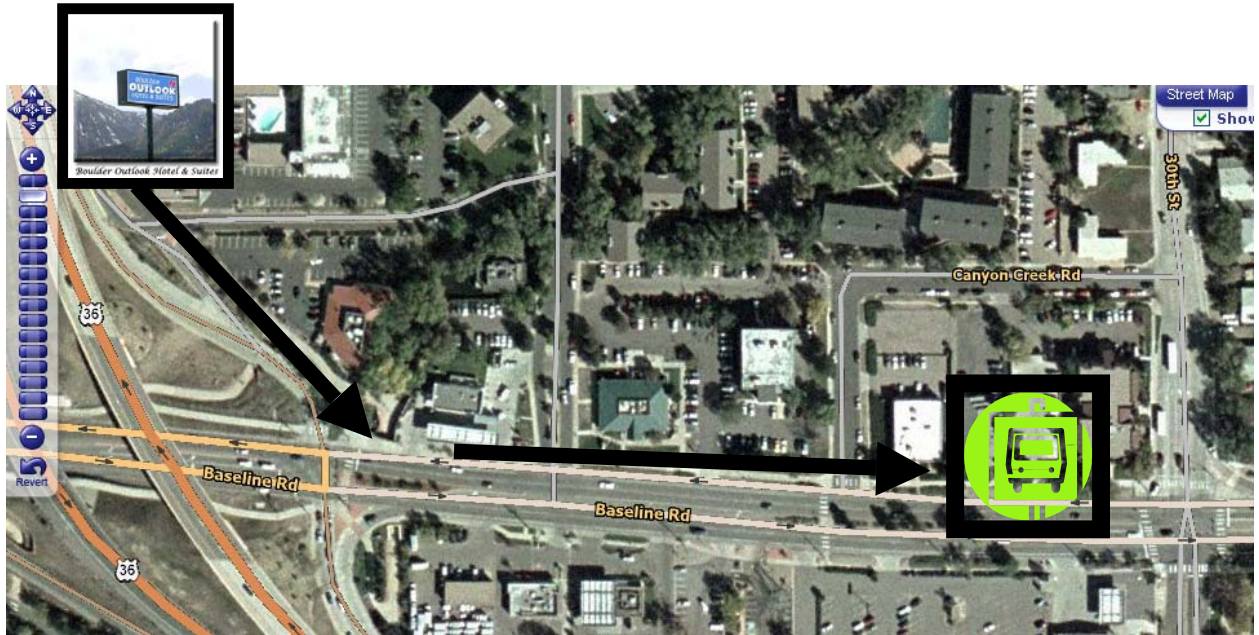
## Busses: Boulder Outlook → Downtown Boulder



Bus Fare:  
**\$1.75**  
Exact change!



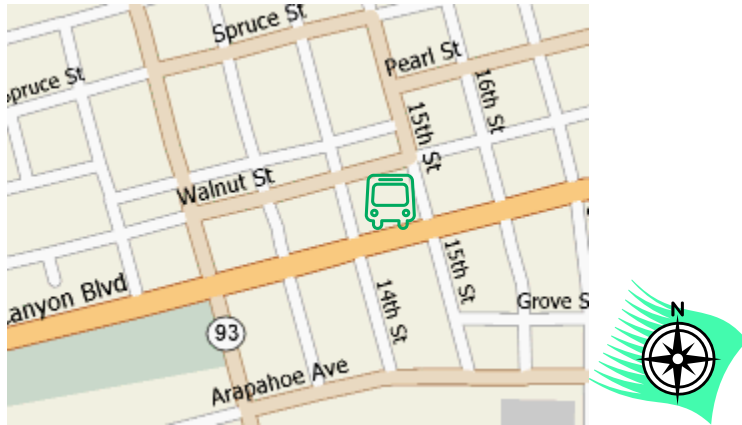
Map of common bus route from Boulder Outlook Hotel to Downtown Boulder (203, 225, DASH)



Closeup of nearest bus stop (in green). Boulder Outlook is at the top left of this image.

Most busses depart from Baseline and 30<sup>th</sup>. From the hotel, walk south (left) on the frontage road until you reach Baseline. (Do not enter the tunnel). Head East (left) on Baseline . The bus stop is on the northwest side of the intersection of 30<sup>th</sup> and Baseline.

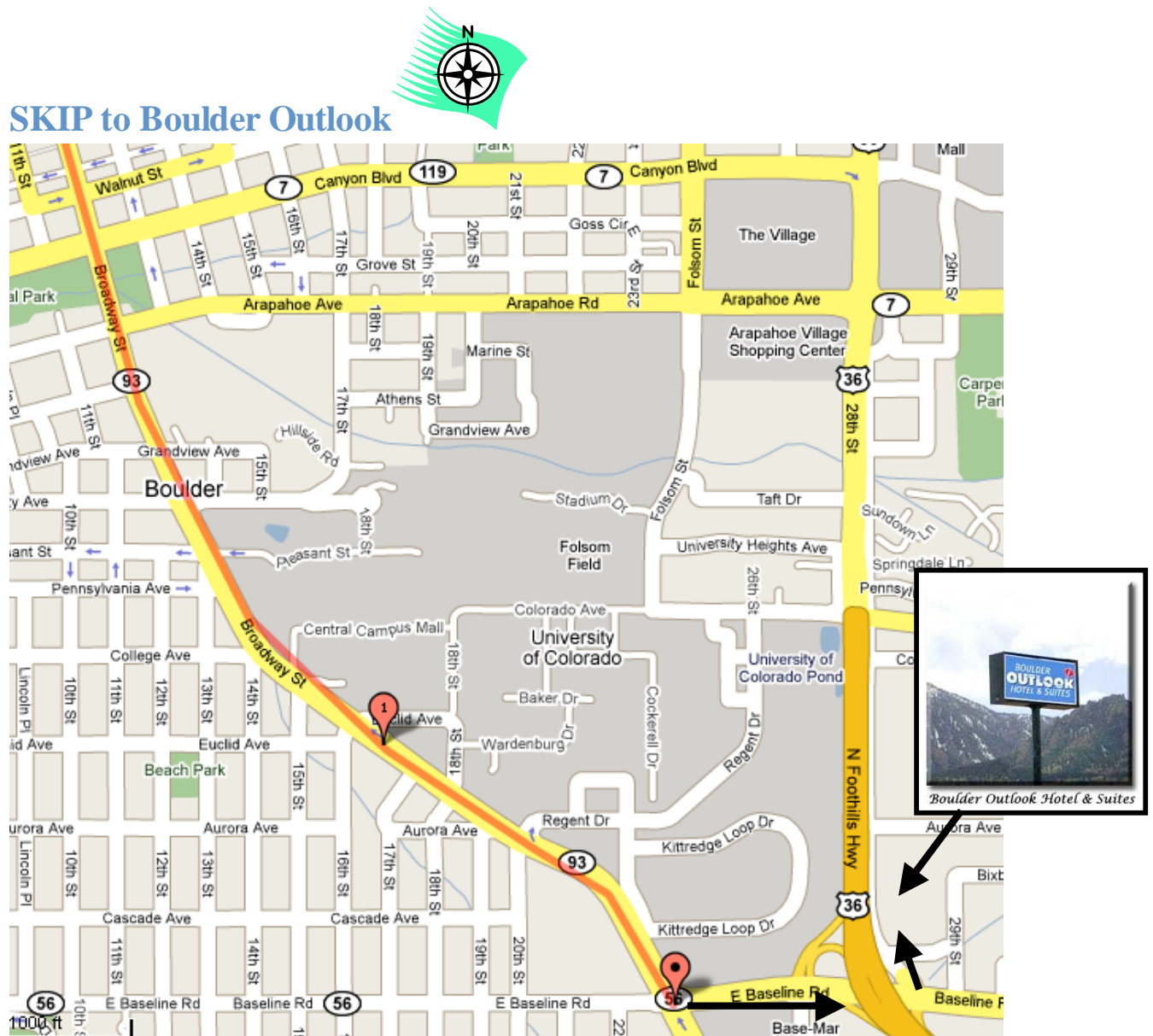
Most busses from the Boulder Outlook area end at the Boulder Bus Station. The Bus Station is located on 14<sup>th</sup> between Canyon and Walnut streets. Pearl Street is a few blocks north of the Bus station.



Closeup of Boulder Bus Station

## Busses: Downtown Boulder → Boulder Outlook

Returning to the hotel is generally the same routine, although, busses run less frequently. The return route is the same. If you find that the return busses don't meet your schedule, another option is to take the SKIP bus that runs every 10-15 minutes up and down Broadway street. (North-South orientation). This requires catching the bus on Broadway street at any bus shelter. (Make sure you stand on the WEST side of the street to catch the bus heading south.) Exit the bus at Broadway and Baseline. Walk east (away from the mountains) until you go under Highway 36. Take a left on the bike/pedestrian path and walk to Boulder Outlook Hotel.



This map shows the walk from Broadway and Baseline to the Boulder Outlook.

## Bus Schedules

OUTLOOK HOTEL → DOWNTOWN BOULDER			
Bus Stop Location	Bus #	Departure Time	Arrival Time
Baseline and 30 <sup>th</sup>	203	5:05pm	5:17pm
Baseline and 30 <sup>th</sup>	225	5:20pm	5:32pm
Baseline and 30 <sup>th</sup>	203	5:35pm	5:47pm
Baseline and 30 <sup>th</sup>	225	5:50pm	6:02pm
Baseline and 30 <sup>th</sup>	203	6:05pm	6:17pm
	203	6:38pm	6:47pm
Baseline and 30 <sup>th</sup>	225	6:53pm	7:02pm
	203	7:08pm	7:17pm
Baseline and 30 <sup>th</sup>	225	7:23pm	7:32pm
	203	7:53pm	8:02pm
	203	8:53pm	9:02pm

Outlook Hotel to Downtown Bus Station (14<sup>th</sup> and Walnut)

### Downtown Bus Station (14<sup>th</sup> and Walnut) to Outlook Hotel

\*\* Note: There are fewer buses running later in the evening directly to the hotel, however, The SKIP

DOWNTOWN BOULDER → BOULDER OUTLOOK			
Bus Stop Location	Bus #	Departure Time	Arrival Time
Downtown Bus Station (14 <sup>th</sup> and Walnut)	203	5:22 pm	5:35 pm
	225	5:37	5:50
	203	5:52	6:05
	225	6:07	6:17
	203	6:22	6:32
	203	6:52	7:02
	225	7:07	7:17
	203	7:22	7:32
	203	8:22	8:32
	203	9:22	9:32
	DASH	9:36	9:53 (Broadway and Baseline)
		9:51	10:10 (Broadway and Baseline)
	203	10:22	10:32
	203	11:22	11:32

bus runs every 10-15 minutes along Broadway. Catch the bus at any bus stop along Broadway on the West side of the street (Head South!). Exit the bus at Basemar Shopping Center (Boadway and Baseline) and walk east to the Hotel. See map for details.

### Other Useful Information:

Boulder has a very dry climate and is located at 5,400 feet (1646 meters) above sea level. These two factors make it important for visitors to properly hydrate and not push themselves as hard. You will



notice extra effort in climbing stairs, etc. Exposure to higher altitudes affects people differently, but regardless, please remember to drink more water than you are accustomed to.

## TAXIS:

Boulder Taxi Cab  
(303) 641-7829  
[www.bouldertaxicab.com](http://www.bouldertaxicab.com)

Boulder Yellow Cab Inc.  
(303) 777-7777  
[www.boulderyellowcab.com](http://www.boulderyellowcab.com)

