

VIRGINIA
ORCHARD
SURVEY
2005

2005 Virginia Orchard Survey

Compiled and Published by

USDA/NASS/Virginia Field Office
P.O. Box 1659
Richmond, VA 23218-1659
(804) 771-2493
nass-va@nass.usda.gov
www.nass.usda.gov/va

Director

Herman C. Ellison

Deputy Director

David M. Mueller

Statisticians

Jason Jones, Agricultural Statistician
Kevin Harding, Agricultural Statistician

A COOPERATIVE FUNCTION OF
Virginia Department of Agriculture and Forestry
Robert S. Bloxom, Secretary

Virginia Department of Agriculture and Consumer Services
Todd P. Haymore, Commissioner

U.S. Department of Agriculture, National Agricultural Statistics Service
Joseph P. Riley, Acting Administrator
Marshall L. Dantzler, Deputy Administrator of Field Operations

TABLE OF CONTENTS

APPLES:

Survey Highlights	3
Acres by Size Group, 2005	4
Acres by Size Group Chart	4
Number of Growers and Trees by Surveys, 1937-2005	5
Acres and Number of Trees by County	6
Number of Growers, Total Acres and Trees by County, 2005	7
Number of Trees by County and Age Group, 2005	8
Number of Trees by Variety, 1977-2005	9
Number and Acres of Trees by Variety and Age Group, 2005	10
Number of Acres by Variety and Region, 2005	11
Percent of Trees by Variety Chart	11
Number of Trees by Variety and Region, 2005	12
Number of Trees by Variety and Rootstock, 2005	13
Number of Acres by Variety and Rootstock, 2005	14
Total Acres and Trees by Rootstock and Age, 2005	15
Total Acres and Trees by Rootstock and Variety, 2005	16-23
Number of Trees by Rootstock, Age, and Season, 2005	24

PEACHES:

Survey Highlights	25
Number of Growers, Trees and Acres by Year	26
Number of Growers, Total Acres and Trees by Area, 2005	27
Number of Growers and Total Trees by Area, 1992-2005	27
Number of Trees by Area and Age Group, 2005	28
Total Trees by Area Chart	28
Number of Trees by Variety, 1972-2005	29
Number of Trees by Variety and Age Group, 2005	30
Survey Methodology	31

VIRGINIA COMMERCIAL APPLE PRODUCTION SURVEY HIGHLIGHTS

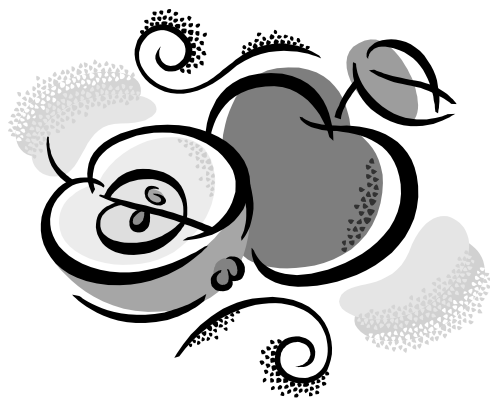
The number of apple trees in Virginia decreased 22 percent between 2001 and 2005. A commercial apple orchard is defined as any grower with at least 100 apple trees maintained for production. Commercial apple growers now maintain 1,515,240 trees for production compared with 1,938,977 trees in 2001. Commercial growers reported that 5.9 percent of the total trees were nonbearing in 2005.

Apple acreage decreased 31 percent, from 16,438 in 2001 to 11,403 acres in 2005. The average number of apple trees per acre increased from 118 in 2001 to 133 trees in 2005, continuing the trend toward higher density plantings. The number of commercial apple orchards decreased from 233 growers in 2001 to 206 in 2005.

The Shenandoah Valley remains the largest of the five apple producing districts. It contains nearly 69 percent of the total trees statewide. Frederick County is the largest producing county within the district with 43 percent of all apple trees. The Piedmont district has 24 percent of the trees; Roanoke has 3 percent and the Southwest district has 4 percent. The remaining trees are spread across the rest of the Commonwealth.

Trees 12 to 22 years old account for the largest portion of the total trees at 40 percent. Trees less than 7 years of age make up 15 percent of the total, while trees more than 22 years of age make up 25 percent of the total. Trees 7 to 11 years old make up 20 percent of the total trees.

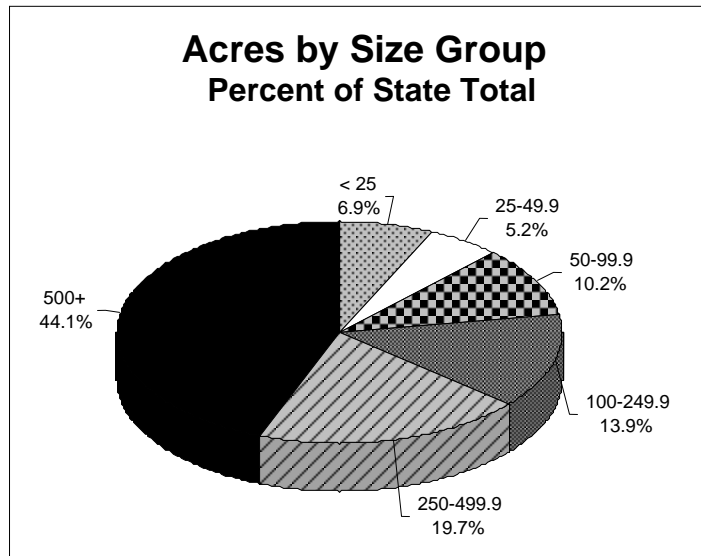
York Imperial is the number one apple variety in the Commonwealth with 330,295 trees, or 22 percent of the total trees. The top five varieties of apples grown are York, Red Delicious, Golden Delicious, Rome, and Fuji and they represent 73 percent of the total apples grown in Virginia. The Pink Lady variety showed the greatest increase in the number of trees grown, increasing from 12,015 in 2001 to 19,125 in 2005.



Acres by Size Group, 2005

Acreage Size Group	Number of growers 1/	Acres	Percent of Acres	Trees	Percent of Trees	Trees per Acre
< 25	148	787	6.9	63,591	4.2	81
25-49.9	18	594	5.2	55,067	3.6	93
50-99.9	16	1,156	10.2	114,220	7.5	99
100-249.9	11	1,589	13.9	233,855	15.4	147
250-499.9	7	2,244	19.7	280,913	18.6	125
500+	6	5,033	44.1	767,594	50.7	153
Total	206	11,403	100.0	1,515,240	100.0	133

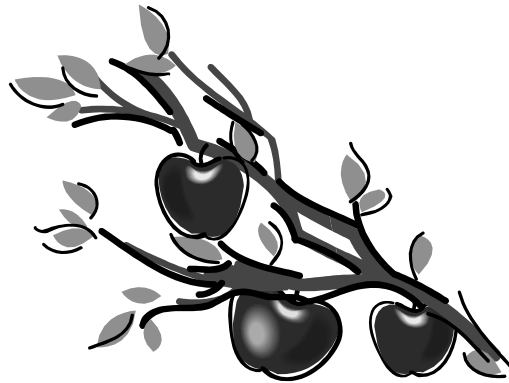
1/ Separate named operations controlled by the same management were counted as individual growers and included in the appropriate size group(s).



Number of Growers and Trees by Surveys, 1937 – 2005

Year of Survey	Number of growers	Total Acres	Number of Trees			Non-Bearing % of Total	Trees Per Acre
			Total	Non-Bearing 1/	Bearing		
1937	3,665	NA	4,152,948	599,600	3,553,348	14.4	NA
1949	2,059	73,044	2,765,787	381,763	2,384,024	13.8	38
1956	1,405	55,853	2,093,817	417,632	1,676,185	19.9	38
1963	885	41,023	1,675,818	462,409	1,213,409	27.6	41
1967	808	37,206	1,668,510	525,487	1,143,023	31.5	45
1972	694	31,380	1,668,859	522,763	1,146,096	31.3	53
1977	599	28,538	1,592,706	200,577	1,392,129	12.6	56
1982	492	25,597	1,540,113	175,751	1,364,362	11.4	60
1987	343	23,352	1,554,907	293,520	1,261,387	18.9	67
1992	315	21,517	1,922,328	255,151	1,667,177	13.3	89
1997	264	18,589	2,000,751	178,165	1,822,586	8.9	108
2001	233	16,438	1,938,977	235,377	1,703,600	12.1	118
2005	206	11,403	1,515,240	89,765	1,425,475	5.9	133

1/ For surveys prior to 1982, 1-7 years of age; for 1982,1987,1992, 2001 and 2005 surveys, 1-3 years of age for size control and 1-6 years for standard trees. For 1997, 1-3 years is considered non-bearing. NA - Not Available.



Acres and Number of Trees by County 1/

Area & County	1997			2001			2005		
	Total Acres	Total Trees	Trees per Acre	Total Acres	Total Trees	Trees per Acre	Total Acres	Total Trees	Trees per Acre
Shenandoah Valley:									
Clarke	1,696	133,389	79	1,451	128,292	88	405	36,651	90
Frederick	7,169	644,624	90	6,466	736,737	114	5,371	656,695	122
Rockingham	1,633	214,713	131	1,451	204,374	141	*	*	*
Shenandoah	2,315	224,149	97	2,316	234,435	101	1,449	183,054	126
Others	263	15,496	59	279	17,090	61	715	163,248	228
Total	13,076	1,232,371	94	11,963	1,320,928	110	7,940	1,039,648	131
Piedmont:									
Albemarle	713	105,688	148	703	119,700	170	*	*	*
Amherst	215	40,211	187	297	67,771	228	*	*	*
Madison	297	23,072	78	199	16,232	82	*	*	*
Nelson	1,060	200,853	189	1,023	206,055	201	852	179,226	210
Rappahannock	871	174,312	200	319	30,379	95	279	25,131	90
Others	204	20,250	99	104	10,147	98	1,069	158,594	148
Total	3,360	564,386	168	2,645	450,284	170	2,200	362,951	165
Roanoke:									
Bedford	245	22,377	91	177	14,241	80	107	8,511	80
Botetourt	395	44,390	112	346	43,829	127	*	*	*
Others	335	28,666	86	346	34,681	100	364	38,083	105
Total	975	95,433	98	869	92,751	107	471	46,594	99
Southwest:									
Carroll	359	31,737	88	304	26,345	87	237	26,654	112
Patrick	382	31,075	81	350	23,611	67	363	23,731	65
Others	250	21,501	86	226	18,081	80	108	9,874	91
Total	991	84,313	85	880	68,037	77	708	60,259	85
All Other Counties 2/	187	24,248	130	81	6,977	86	84	5,788	69
State Total	18,589	2,000,751	108	16,438	1,938,977	118	11,403	1,515,240	133

1/ Acres may not add to totals due to rounding. 2/ Counties not included in above geographical areas.

* Not published due to confidentiality.

Number of Growers, Total Acres and Trees by County, 2005

Area and County	Number of Growers 1/	Total Acres 2/	Total	Number of Trees		Non-Bearing Trees as Percent of Total
				Non-Bearing 3/	Bearing	
Shenandoah Valley						
Clarke	4	405	36,651	680	35,971	1.9
Frederick	24	5,371	656,695	59,043	597,652	9.0
Shenandoah	8	1,449	183,054	16,727	166,327	9.1
Others	14	715	163,248	2,663	160,585	1.6
Total	50	7,940	1,039,648	79,113	960,535	7.6
Piedmont:						
Nelson	8	852	179,226	2,720	176,506	1.5
Rappahannock	12	279	25,131	600	24,531	2.4
Others	32	1,069	158,594	3,255	155,339	2.1
Total	52	2,200	362,951	6,575	356,376	1.8
Roanoke:						
Bedford	6	107	8,511	1,524	6,987	17.9
Others	20	364	38,083	375	37,708	1.0
Total	26	471	46,594	1,899	44,695	4.1
Southwest:						
Carroll	18	237	26,654	160	26,494	0.6
Patrick	18	363	23,731	628	23,103	2.6
Others	16	108	9,874	192	9,682	1.9
Total	52	708	60,259	980	59,279	1.6
All Other Counties 4/	26	84	5,788	1,198	4,590	20.7
State Total	206	11,403	1,515,240	89,765	1,425,475	5.9

1/ Number of growers may not add to totals due to multiple county operators. 2/ Acres may not add to totals due to rounding. 3/ For 2005, 1-3 years of age for size control and 1-6 for standard trees is considered non-bearing. 4/ Counties not included in above geographical areas.

Number of Trees by County and Age Group, 2005

Area and County	1-3 Years	4-6 Years	7-11 Years	12-22 Years	22+ Years	Total Trees	Intentions for 2006	
							To Be Set	To Be Removed
Shenandoah Valley:								
Clarke	680	5,675	5,167	14,642	10,487	36,651	--	--
Frederick	57,518	71,519	156,142	192,824	178,692	656,695	1,000	7,660
Shenandoah	16,727	11,593	23,663	106,523	24,548	183,054	6,938	5,882
Others	2,663	5,219	31,542	80,680	43,144	163,248	10	587
Total	77,588	94,006	216,514	394,669	256,871	1,039,648	7,948	14,129
Piedmont:								
Nelson	2,720	22,640	42,876	90,624	20,366	179,226	1,980	1,660
Rappahannock	600	1,250	2,438	9,314	11,529	25,131	10	19
Others	3,200	9,439	18,148	73,034	54,773	158,594	4,143	5,571
Total	6,520	33,329	63,462	172,972	86,668	362,951	6,133	7,250
Roanoke:								
Bedford	514	1,682	2,383	1,814	2,118	8,511	710	295
Others	30	488	3,053	13,569	20,943	38,083	25	6
Total	544	2,170	5,436	15,383	23,061	46,594	735	301
Southwest:								
Carroll	70	9,330	5,617	7,788	3,849	26,654	300	--
Patrick	300	1,178	3,836	13,768	4,649	23,731	200	1,396
Others	162	94	1,754	1,482	6,382	9,874	17	58
Total	532	10,602	11,207	23,038	14,880	60,259	517	1,454
All Other Counties 1/	1,181	632	413	2,370	1,192	5,788	28	--
State Total	86,365	140,739	297,032	608,432	382,672	1,515,240	15,361	23,134

1/ Counties not included in above geographical areas. Dashes (--) indicate variety not reported or data not published to avoid disclosure of an individual operation and included in "All Other Varieties".

Number of Trees by Variety, 1977 - 2005

Variety	1977	1982	1987	1992	1997	2001	2005
York Imperial	275,356	271,924	237,454	309,282	340,253	394,965	330,295
Red Delicious	575,432	569,787	606,351	705,840	668,218	448,286	284,064
Golden Delicious	299,427	279,089	289,265	360,946	343,010	344,035	258,292
Rome Beauty	91,289	109,211	90,650	168,653	190,512	162,522	133,804
Fuji	---	---	---	4,392	65,359	109,930	98,915
Gala	---	---	---	23,064	52,283	93,492	90,591
Idared	---	---	---	12,972	18,710	54,747	53,235
Stayman	121,142	122,599	128,492	129,193	104,767	72,934	49,853
Ginger Gold	---	---	---	8,856	17,740	25,280	27,210
Granny Smith	---	4,516	12,904	29,530	26,378	38,174	25,847
Pink Lady	---	---	---	---	---	12,015	19,215
Firm Gold	---	---	---	---	11,630	9,352	16,795
Greening	9,896	13,899	26,275	35,487	38,018	44,683	13,402
NW Greening	---	---	---	---	---	---	11,715
Jonathan	37,041	37,816	24,661	23,155	19,681	14,761	9,970
Winesap	103,551	71,367	47,861	41,016	24,311	16,577	9,750
Empire	---	---	---	7,706	6,043	8,231	6,688
Braeburn	---	---	---	4,210	6,043	7,888	6,089
Pippin	---	---	---	---	---	---	5,076
Va Gold	---	---	---	---	---	---	4,893
Cortland	---	---	---	---	---	4,006	3,645
Winter Banana	---	---	---	---	3,487	3,882	2,380
Jonagold	---	---	---	1,567	2,144	2,678	2,367
Mutsu	---	---	---	2,135	2,760	2,871	2,016
All Other Varieties	79,572	59,905	90,994	54,324	59,404	67,668	49,133
State Total	1,592,706	1,540,113	1,554,907	1,922,328	2,000,751	1,938,977	1,515,240

Dashes (---) indicate variety not reported or data not published to avoid disclosure of an individual operation and included in "All Other Varieties".

Number and Acres of Trees by Variety and Age Group, 2005

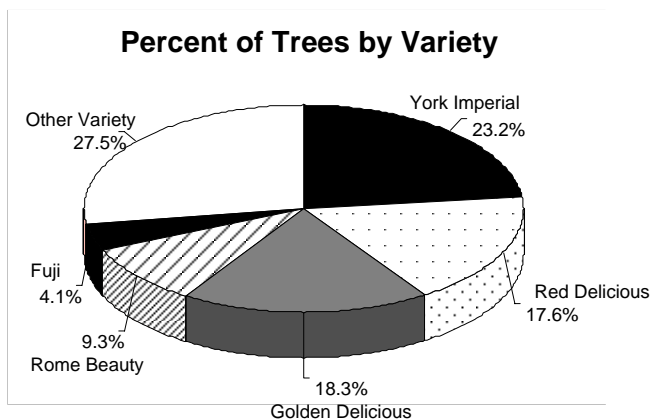
Variety	1-3 Years	4-6 Years	7-11 Years	12-22 Years	22+ Years	Total Trees	Total Acres
York Imperial	32,520	40,904	77,593	105,206	74,072	330,295	2,646.9
Red Delicious	2,272	19,676	26,392	130,843	104,881	284,064	2,002.1
Golden Delicious	11,405	22,266	32,868	116,818	74,935	258,292	2,086.1
Rome Beauty	744	8,396	14,371	61,096	49,197	133,804	1,059.7
Fuji	1,774	9,113	71,301	16,627	100	98,915	466.9
Gala	10,200	12,643	19,866	44,564	3,318	90,591	441.6
Idared	12,690	6,336	14,128	18,481	1,600	53,235	362.1
Stayman	158	1,885	1,599	26,129	20,082	49,853	499.6
Ginger Gold	--	1,040	12,317	10,508	3,345	27,210	188.4
Granny Smith	139	685	5,050	15,541	4,432	25,847	208.3
Pink Lady	6,506	10,495	1,314	875	25	19,215	73.7
Firm Gold	--	--	--	15,733	1,062	16,795	53.7
Greening	--	400	87	6,840	6,075	13,402	146.6
NW Greening	--	--	1,650	6,275	3,790	11,715	135.8
Jonathan	250	952	919	2,025	5,824	9,970	82.9
Winesap	--	412	3,137	1,816	4,385	9,750	87.2
Empire	30	200	196	5,128	1,134	6,688	56.3
Braeburn	--	--	656	5,408	25	6,089	23.9
Pippin	600	1,898	1,469	1,081	28	5,076	35.0
Va Gold	--	--	1,585	2,541	767	4,893	37.7
Cortland	--	20	--	3,625	--	3,645	25.3
Winter Banana	--	--	--	1,970	410	2,380	20.2
Jonagold	10	--	938	1,191	228	2,367	31.2
Mutsu	--	308	612	946	150	2,016	25.7
All Other Varieties	7,067	3,110	8,984	7,165	22,807	49,133	606.1
State Total	86,365	140,739	297,032	608,432	382,672	1,515,240	11,403

Dashes (--) indicate variety not reported or data not published to avoid disclosure of an individual operation and included in "All Other Varieties".

Number of Acres by Variety and Region, 2005

Variety	Shenandoah Valley	Piedmont	Roanoke	Southwest	All Other	Total
York Imperial	2,541.8	89.2	6.5	6.4	3.0	2,646.9
Red Delicious	937.7	647.6	192.2	213.3	11.3	2,002.1
Golden Delicious	1,431.8	398.7	71.1	173.3	11.2	2,086.1
Rome Beauty	764.8	198.8	55.9	39.9	0.3	1,059.7
Fuji	309.4	131.4	6.6	17.6	1.9	466.9
Gala	152.5	241.2	8.9	30.4	8.6	441.6
Idared	361.1	--	1.0	--	--	362.1
Stayman	269.7	126.9	40.6	59.6	2.8	499.6
Ginger Gold	149.3	29.4	2.5	7.2	--	188.4
Granny Smith	57.2	129.2	14.4	4.7	2.8	208.3
Pink Lady	40.1	30.8	2.6	--	0.2	73.7
Firm Gold	50.2	--	3.5	--	--	53.7
Greening	146.1	0.5	--	--	--	146.6
NW Greening	135.8	--	--	--	--	135.8
Jonathan	37.0	15.0	22.7	0.4	7.8	82.9
Winesap	30.3	34.6	10.5	9.0	2.8	87.2
Empire	42.5	8.5	1.6	1.5	2.2	56.3
Braeburn	14.9	8.5	0.5	--	--	23.9
Pippin	17.4	15.3	1.4	0.7	0.2	35.0
Va Gold	27.2	1.0	8.5	1.0	--	37.7
Cortland	25.3	--	--	--	--	25.3
Winter Banana	20.2	--	--	--	--	20.2
Jonagold	25.4	2.0	0.3	2.9	0.6	31.2
Mutsu	7.3	7.2	--	9.8	1.4	25.7
All Other Varieties	344.8	84.4	19.7	130.4	26.8	606.1
State Total	7,939.8	2,200.2	471.0	708.1	83.9	11,403.0

Dashes (--) indicate variety not reported or data not published to avoid disclosure of an individual operation and included in "All Other Varieties".



Number of Trees by Variety and Region, 2005

Variety	Shenandoah Valley	Piedmont	Roanoke	Southwest	All Other	Total
York Imperial	321,041	8,142	539	423	150	330,295
Red Delicious	145,063	102,844	20,161	15,297	699	284,064
Golden Delicious	178,536	57,151	7,001	14,849	755	258,292
Rome Beauty	91,791	32,386	6,176	3,434	17	133,804
Fuji	57,285	38,094	616	2,441	479	98,915
Gala	27,040	58,005	792	4,097	657	90,591
Idared	53,135	--	100	--	--	53,235
Stayman	29,504	11,561	3,675	4,911	202	49,853
Ginger Gold	20,274	5,775	225	936	--	27,210
Granny Smith	6,305	17,789	1,232	413	108	25,847
Pink Lady	8,920	9,900	245	--	150	19,215
Firm Gold	16,295	--	500	--	--	16,795
Greening	13,372	30	--	--	--	13,402
NW Greening	11,715	--	--	--	--	11,715
Jonathan	4,780	2,288	2,451	30	421	9,970
Winesap	2,765	5,202	805	749	229	9,750
Empire	4,916	1,066	156	140	410	6,688
Braeburn	2,498	3,561	30	--	--	6,089
Pippin	2,969	2,043	26	32	6	5,076
Va Gold	4,013	30	760	90	--	4,893
Cortland	3,645	--	--	--	--	3,645
Winter Banana	2,380	--	--	--	--	2,380
Jonagold	1,929	198	20	210	10	2,367
Mutsu	799	216	--	864	137	2,016
All Other Varieties	28,678	6,670	1,084	11,343	1,358	49,133
State Total	1,039,648	362,951	46,594	60,259	5,788	1,515,240

Dashes (--) indicate variety not reported or data not published to avoid disclosure of an individual operation and included in "All Other Varieties".

Number of Trees by Variety and Rootstock, 2005

Variety	Standard	MM111	MM106	M7	M26	Mark	M9	Inter	Bud 9	G16	Other	Total
York Imperial	31,527	83,417	16,832	110,481	66,456	--	18,372	--	--	--	2,330	330,295
Red Delicious	97,198	102,667	12,073	34,776	37,114	--	--	--	100	--	76	284,064
Golden Delicious	41,063	84,710	14,206	75,791	31,540	2,760	7,812	--	--	--	70	258,292
Rome Beauty	30,656	90,425	2,986	9,342	395	--	--	--	--	--	--	133,804
Fuji	134	3,013	4,760	19,337	43,000	--	28,185	--	--	--	--	98,915
Gala	1,386	4,267	5,751	10,653	26,983	--	37,720	3,610	--	--	--	90,591
Idared	1,700	19,604	425	11,245	19,281	300	--	--	680	--	--	53,235
Stayman	10,058	26,266	1,089	7,427	4,861	--	--	--	--	--	122	49,853
Ginger Gold	--	7,067	6,135	5,959	6,089	300	180	1,480	--	--	--	27,210
Granny Smith	2,909	4,856	200	4,377	13,314	--	--	--	--	--	66	25,847
Pink Lady	--	225	--	900	2,875	--	7,350	7,820	--	--	--	19,215
Firm Gold	--	648	--	9,231	5,052	1,864	--	--	--	--	--	16,795
Greening	4,869	4,614	--	2,519	1,400	--	--	--	--	--	--	13,402
NW Greening	583	9,397	--	1,735	--	--	--	--	--	--	--	11,715
Jonathan	5,767	1,822	933	1,326	100	--	22	--	--	--	--	9,970
Winesap	1,970	4,220	866	2,515	135	--	22	22	--	--	--	9,750
Empire	56	1,744	80	2,558	2,000	150	--	--	--	--	--	6,688
Braeburn	--	2,395	--	1,604	2,000	--	--	--	--	--	--	6,089
Pippin	28	4,906	--	100	--	--	22	--	--	--	20	5,076
Va Gold	60	4,503	30	300	--	--	--	--	--	--	--	4,893
Cortland	--	1,450	2,075	--	--	100	20	--	--	--	--	3,645
Winter Banana	--	--	1,476	904	--	--	--	--	--	--	--	2,380
Jonagold	130	932	--	665	590	--	50	--	--	--	--	2,367
Mutsu	14	772	25	857	200	--	--	--	100	--	--	2,016
All Other Varieties	17,981	12,774	3,114	3,536	5,201	150	667	4,981	616	--	113	49,133
State Total	248,089	476,694	73,146	318,138	268,586	6,174	100,433	18,213	2,294	547	2,926	1,515,240

Dashes (--) indicate variety not reported or data not published to avoid disclosure of an individual operation and included in "All Other Varieties".

Number of Acres by Variety and Rootstock, 2005

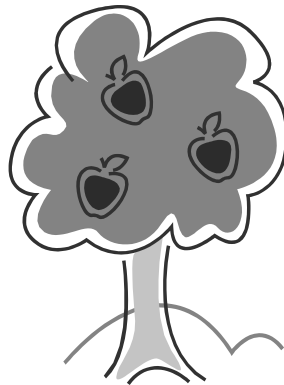
Variety	Standard	MM111	MM106	M7	M26	Mark	M9	Inter	Bud 9	G16	Other	Total
York Imperial	477.6	819.7	148.0	804.2	337.4	--	44.4	--	--	--	13.0	2,646.9
Red Delicious	645.1	996.0	83.5	157.2	117.0	--	--	--	1.0	--	2.2	2,002.1
Golden Delicious	423.9	841.6	124.9	496.8	152.1	27.3	16.8	--	--	--	1.9	2,086.1
Rome Beauty	278.1	687.6	25.2	66.7	2.1	--	--	--	--	--	--	1,059.7
Fuji	1.8	26.9	15.2	111.6	231.1	--	78.4	--	--	--	--	466.9
Gala	17.5	40.2	30.3	86.0	124.0	--	130.6	11.6	--	--	--	441.6
Idared	25.0	149.6	3.0	74.0	106.5	2.0	--	--	2.0	--	--	362.1
Stayman	116.4	304.6	9.9	55.7	11.1	--	--	--	--	--	1.8	499.6
Ginger Gold	--	64.0	32.1	50.6	35.1	1.3	1.3	4.0	--	--	--	188.4
Granny Smith	30.6	51.3	3.0	38.5	83.0	--	--	--	--	--	1.6	208.3
Pink Lady	--	2.3	--	7.2	15.0	--	17.7	30.9	--	--	--	73.7
Firm Gold	--	4.6	--	34.8	10.9	3.4	--	--	--	--	--	53.7
Greening	63.6	44.3	--	24.7	14.0	--	--	--	--	--	--	146.6
NW Greening	7.3	112.8	--	15.7	--	--	--	--	--	--	--	135.8
Jonathan	43.3	18.0	12.1	8.4	1.0	--	--	--	--	--	--	82.9
Winesap	25.5	41.4	7.1	11.8	1.2	--	--	--	--	--	--	87.2
Empire	0.7	16.6	1.0	23.0	13.7	--	--	--	1.0	--	--	56.3
Braeburn	--	14.3	--	4.7	4.3	--	--	--	--	--	--	23.9
Pippin	--	32.2	--	1.5	--	--	--	--	--	--	--	35.0
Va Gold	2.5	32.2	1.0	2.0	--	--	--	--	--	--	--	37.7
Cortland	--	10.3	14.7	--	--	--	--	--	--	--	--	25.3
Winter Banana	--	--	14.1	0.1	--	--	--	--	--	--	--	20.2
Jonagold	1.4	20.9	--	5.7	3.0	--	0.2	--	--	--	--	31.2
Mutsu	1.1	14.1	0.1	7.9	1.0	--	--	--	1.0	--	--	25.7
All Other Varieties	332.4	141.9	33.6	32.9	37.9	--	2.5	17.7	5.6	--	1.3	606.1
State Total	2,494.6	4,487.4	559.4	2,127.7	1,301.4	36.1	292.4	65.4	12.3	2.7	23.6	11,403.0

Dashes (--) indicate variety not reported or data not published to avoid disclosure of an individual operation.

Total Acres and Trees by Rootstock and Age, 2005

Rootstock	2003-05	2000-02	1995-99	1985-94	1984 & earlier	Total Trees	Total Acres	Intentions for 2006	
	1-3 yrs	4-6 yrs	7-11yrs	12-21 yrs	22+ yrs			To Be Set	To be Removed
Standard	2,655	3,400	14,835	56,084	171,115	248,089	2,494.6	182	8,582
MM 111	8,575	31,677	65,228	229,397	141,817	476,694	4,487.4	6,188	10,864
MM 106	1,345	2,611	10,564	29,730	28,896	73,146	559.4	--	875
M7 OR M7a	22,150	19,638	75,994	164,748	35,608	318,138	2,127.7	29	763
M26	32,989	53,351	80,029	97,096	5,121	268,586	1,301.4	200	2,000
Mark	--	400	1,635	4,139	--	6,174	36.1	--	--
M9	4,100	24,971	45,031	26,291	40	100,433	292.4	4,000	--
Interstem	14,265	647	2,816	485	--	18,213	65.4	4,735	--
Bud9	216	1,148	880	--	--	2,294	12.3	--	--
G16	--	547	--	--	--	547	2.7	--	--
Other	70	2,349	20	412	75	2,926	23.6	27	50
State Total	86,365	140,739	297,032	608,432	382,672	1,515,240	11,403.0	15,361	23,134

Dashes (--) indicate variety not reported or data not published to avoid disclosure of an individual operation and included "All Other Varieties".



Total Acres and Trees by Rootstock and Variety, 2005

York Imperial									
Rootstock	2003-05	2000-02	1995-99	1985-94	1984 & earlier	Total Trees	Total Acres	Intentions for 2006	
	1-3 yrs	4-6 yrs	7-11yrs	12-21 yrs	22+ yrs			To Be Set	To be Removed
Standard	1,500	1,504	2,030	3,072	23,421	31,527	477.6	--	3,235
MM 111	200	1,550	17,530	37,549	26,588	83,417	819.7	--	475
MM 106	--	--	1,509	7,609	7,714	16,832	148.0	--	500
M7 OR M7a	13,420	3,356	35,311	42,312	16,082	110,481	804.2	--	280
M26	17,400	20,652	13,473	14,664	267	66,456	337.4	--	--
Mark	--	--	--	--	--	--	--	--	--
M9	--	10,632	7,740	--	--	18,372	44.4	--	--
Interstem	--	--	--	--	--	--	--	--	--
Bud9	--	--	--	--	--	--	--	--	--
G16	--	--	--	--	--	--	--	--	--
Other	--	2,330	--	--	--	2,330	13.0	25	50
Total	32,520	40,904	77,593	105,206	74,072	330,295	2,646.9	25	4,540

Red Delicious									
Rootstock	2003-05	2000-02	1995-99	1985-94	1984 & earlier	Total Trees	Total Acres	Intentions for 2006	
	1-3 yrs	4-6 yrs	7-11yrs	12-21 yrs	22+ yrs			To Be Set	To be Removed
Standard	518	1,342	7,117	20,910	67,311	97,198	645.1	13	1,980
MM 111	1,739	14,218	12,967	50,604	23,139	102,667	996.0	2,500	5,896
MM 106	--	1,100	100	1,158	9,715	12,073	83.5	--	--
M7 OR M7a	15	--	2,242	29,348	3,171	34,776	157.2	--	--
M26	--	3,000	3,866	28,728	1,520	37,114	117.0	--	--
Mark	--	--	--	--	--	--	--	--	--
M9	--	--	--	--	--	--	--	--	--
Interstem	--	--	--	--	--	--	--	--	--
Bud9	--	--	100	--	--	100	1.0	--	--
G16	--	--	--	--	--	--	--	--	--
Other	--	16	--	35	25	76	2.2	--	--
Total	2,272	19,676	26,392	130,843	104,881	284,064	2,002.1	2,513	7,876

Golden Delicious									
Rootstock	2003-05	2000-02	1995-99	1985-94	1984 & earlier	Total Trees	Total Acres	Intentions for 2006	
	1-3 yrs	4-6 yrs	7-11yrs	12-21 yrs	22+ yrs			To Be Set	To be Removed
Standard	27	138	2,706	10,166	28,026	41,063	423.9	30	1,841
MM 111	1,229	4,399	4,215	43,020	31,847	84,710	841.6	466	985
MM 106	10	800	1,430	8,062	3,904	14,206	124.9	--	--
M7 OR M7a	4,570	3,678	13,512	44,516	9,515	75,791	496.8	2	248
M26	5,565	12,155	5,188	7,014	1,618	31,540	152.1	100	--
Mark	--	--	1,500	1,260	--	2,760	27.3	--	--
M9	--	755	4,317	2,740	--	7,812	16.8	--	--
Interstem	--	--	--	--	--	--	--	--	--
Bud9	--	--	--	--	--	--	--	--	--
G16	--	--	--	--	--	--	--	--	--
Other	--	--	--	40	25	70	1.9	--	--
Total	11,405	22,266	32,868	116,818	74,935	258,292	2,086.1	598	3,074

Dashes (--) indicate variety not reported or data not published to avoid disclosure of an individual operation and included "All Other Varieties".

Rome Beauty

Rootstock	2003-05	2000-02	1995-99	1985-94	1984 & earlier	Total Trees	Total Acres	Intentions for 2006	
	1-3 yrs	4-6 yrs	7-11yrs	12-21 yrs	22+ yrs			To Be Set	To be Removed
Standard	--	--	1,022	12,760	16,874	30,656	278.1	--	1,081
MM 111	548	5,896	9,444	44,153	30,384	90,425	687.6	3,132	1,221
MM 106	--	--	1,390	1,180	416	2,986	25.2	--	--
M7 OR M7a	196	2,500	2,490	2,633	1,523	9,342	66.7	--	--
M26	--	--	25	370	--	395	2.1	--	--
Mark	--	--	--	--	--	--	--	--	--
M9	--	--	--	--	--	--	--	--	--
Interstem	--	--	--	--	--	--	--	--	--
Bud9	--	--	--	--	--	--	--	--	--
G16	--	--	--	--	--	--	--	--	--
Other	--	--	--	--	--	--	--	--	--
Total	744	8,396	14,371	61,096	49,197	133,804	1,059.7	3,132	2,302

Fuji

Rootstock	2003-05	2000-02	1995-99	1985-94	1984 & earlier	Total Trees	Total Acres	Intentions for 2006	
	1-3 yrs	4-6 yrs	7-11yrs	12-21 yrs	22+ yrs			To Be Set	To be Removed
Standard	--	--	75	50	--	134	1.8	--	--
MM 111	100	340	919	1,554	100	3,013	26.9	40	--
MM 106	10	--	1,500	3,250	--	4,760	15.2	--	--
M7 OR M7a	--	2,850	9,246	7,241	--	19,337	111.6	25	--
M26	1,660	4,199	33,566	3,575	--	43,000	231.1	--	2,000
Mark	--	--	--	--	--	--	--	--	--
M9	--	1,454	25,995	736	--	28,185	78.4	--	--
Interstem	--	--	--	--	--	--	--	--	--
Bud9	--	--	--	--	--	--	--	--	--
G16	--	--	--	--	--	--	--	--	--
Other	--	--	--	--	--	--	--	--	--
Total	1,774	9,113	71,301	16,627	100	98,915	466.9	67	2,000

Gala

Rootstock	2003-05	2000-02	1995-99	1985-94	1984 & earlier	Total Trees	Total Acres	Intentions for 2006	
	1-3 yrs	4-6 yrs	7-11yrs	12-21 yrs	22+ yrs			To Be Set	To be Removed
Standard	144	10	196	136	900	1,386	17.5	14	--
MM 111	6	87	3,013	961	200	4,267	40.2	40	75
MM 106	1,325	610	2,000	250	1,566	5,751	30.3	--	--
M7 OR M7a	--	1,466	1,838	7,349	--	10,653	86.0	--	--
M26	1,192	5,930	6,329	12,880	652	26,983	124.0	100	--
Mark	--	--	--	--	--	--	--	--	--
M9	4,100	4,500	6,455	22,665	--	37,720	130.6	4,000	--
Interstem	3,410	--	--	200	--	3,610	11.6	4,735	--
Bud9	--	--	--	--	--	--	--	--	--
G16	--	--	--	--	--	--	--	--	--
Other	--	--	--	--	--	--	--	--	--
Total	10,200	12,643	19,866	44,564	3,318	90,591	441.6	8,889	75

Dashes (--) indicate variety not reported or data not published to avoid disclosure of an individual operation and included "All Other Varieties".

Idared

Rootstock	2003-05	2000-02	1995-99	1985-94	1984 & earlier	Total Trees	Total Acres	Intentions for 2006	
	1-3 yrs	4-6 yrs	7-11yrs	12-21 yrs	22+ yrs			To Be Set	To be Removed
Standard	--	--	--	700	1,000	1,700	25.0	--	--
MM 111	2,730	1,496	6,728	8,350	300	19,604	149.6	--	--
MM 106	--	--	--	425	--	425	3.0	--	--
M7 OR M7a	3,220	--	3,560	4,165	300	11,245	74.0	--	--
M26	6,740	4,540	3,160	4,841	--	19,281	106.5	--	--
Mark	--	300	--	--	--	300	2.0	--	--
M9	--	--	--	--	--	--	--	--	--
Interstem	--	--	--	--	--	--	--	--	--
Bud9	--	--	680	--	--	680	2.0	--	--
G16	--	--	--	--	--	--	--	--	--
Other	--	--	--	--	--	--	--	--	--
Total	12,690	6,336	14,128	18,481	1,600	53,235	362.1	--	--

Stayman

Rootstock	2003-05	2000-02	1995-99	1985-94	1984 & earlier	Total Trees	Total Acres	Intentions for 2006	
	1-3 yrs	4-6 yrs	7-11yrs	12-21 yrs	22+ yrs			To Be Set	To be Removed
Standard	--	100	233	3,508	6,208	10,058	116.4	22	--
MM 111	--	285	741	13,405	11,835	26,266	304.6	--	1,566
MM 106	--	100	100	75	814	1,089	9.9	--	350
M7 OR M7a	45	1,300	525	4,332	1,225	7,427	55.7	--	--
M26	100	100	--	4,661	--	4,861	11.1	--	--
Mark	--	--	--	--	--	--	--	--	--
M9	--	--	--	--	--	--	--	--	--
Interstem	--	--	--	--	--	--	--	--	--
Bud9	--	--	--	--	--	--	--	--	--
G16	--	--	--	--	--	--	--	--	--
Other	--	--	--	118	--	122	1.8	--	--
Total	158	1,885	1,599	26,129	20,082	49,853	499.6	22	1,917

Ginger Gold

Rootstock	2003-05	2000-02	1995-99	1985-94	1984 & earlier	Total Trees	Total Acres	Intentions for 2006	
	1-3 yrs	4-6 yrs	7-11yrs	12-21 yrs	22+ yrs			To Be Set	To be Removed
Standard	--	--	--	--	--	--	--	--	--
MM 111	--	130	905	5,982	50	7,067	64.0	--	--
MM 106	--	--	1,000	1,880	3,255	6,135	32.1	--	--
M7 OR M7a	--	910	3,450	1,599	--	5,959	50.6	--	--
M26	--	--	5,342	747	--	6,089	35.1	--	--
Mark	--	--	100	200	--	300	1.3	--	--
M9	--	--	40	100	40	180	1.3	--	--
Interstem	--	--	1,480	--	--	1,480	4.0	--	--
Bud9	--	--	--	--	--	--	--	--	--
G16	--	--	--	--	--	--	--	--	--
Other	--	--	--	--	--	--	--	--	--
Total	--	1,040	12,317	10,508	3,345	27,210	188.4	--	--

Dashes (--) indicate variety not reported or data not published to avoid disclosure of an individual operation and included "All Other Varieties".

Granny Smith

Rootstock	2003-05	2000-02	1995-99	1985-94	1984 & earlier	Total Trees	Total Acres	Intentions for 2006	
	1-3 yrs	4-6 yrs	7-11yrs	12-21 yrs	22+ yrs			To Be Set	To be Removed
Standard	22	--	50	287	2,543	2,909	30.6	30	--
MM 111	--	50	600	3,336	870	4,856	51.3	--	--
MM 106	--	--	--	200	--	200	3.0	--	--
M7 OR M7a	15	626	--	3,556	180	4,377	38.5	--	--
M26	100	--	4,400	8,000	814	13,314	83.0	--	--
Mark	--	--	--	--	--	--	--	--	--
M9	--	--	--	--	--	--	--	--	--
Interstem	--	--	--	--	--	--	--	--	--
Bud9	--	--	--	--	--	--	--	--	--
G16	--	--	--	--	--	--	--	--	--
Other	--	--	--	37	25	66	1.6	--	--
Total	139	685	5,050	15,541	4,432	25,847	208.3	30	--

Pink Lady

Rootstock	2003-05	2000-02	1995-99	1985-94	1984 & earlier	Total Trees	Total Acres	Intentions for 2006	
	1-3 yrs	4-6 yrs	7-11yrs	12-21 yrs	22+ yrs			To Be Set	To be Removed
Standard	--	--	--	--	--	--	--	--	--
MM 111	--	200	--	--	25	225	2.3	--	--
MM 106	--	--	--	--	--	--	--	--	--
M7 OR M7a	--	900	--	--	--	900	7.2	--	--
M26	--	2,000	--	875	--	2,875	15.0	--	--
Mark	--	--	--	--	--	--	--	--	--
M9	--	7,350	--	--	--	7,350	17.7	--	--
Interstem	6,506	--	1,314	--	--	7,820	30.9	--	--
Bud9	--	--	--	--	--	--	--	--	--
G16	--	--	--	--	--	--	--	--	--
Other	--	--	--	--	--	--	--	--	--
Total	6,506	10,495	1,314	875	25	19,215	73.7	--	--

Firm Gold

Rootstock	2003-05	2000-02	1995-99	1985-94	1984 & earlier	Total Trees	Total Acres	Intentions for 2006	
	1-3 yrs	4-6 yrs	7-11yrs	12-21 yrs	22+ yrs			To Be Set	To be Removed
Standard	--	--	--	--	--	--	--	--	--
MM 111	--	--	--	648	--	648	4.6	--	--
MM 106	--	--	--	--	--	--	--	--	--
M7 OR M7a	--	--	--	8,169	1,062	9,231	34.8	--	--
M26	--	--	--	5,052	--	5,052	10.9	--	--
Mark	--	--	--	1,864	--	1,864	3.4	--	--
M9	--	--	--	--	--	--	--	--	--
Interstem	--	--	--	--	--	--	--	--	--
Bud9	--	--	--	--	--	--	--	--	--
G16	--	--	--	--	--	--	--	--	--
Other	--	--	--	--	--	--	--	--	--
Total	--	--	--	15,733	1,062	16,795	53.7	--	--

Dashes (--) indicate variety not reported or data not published to avoid disclosure of an individual operation and included "All Other Varieties".

Greening

Rootstock	2003-05	2000-02	1995-99	1985-94	1984 & earlier	Total Trees	Total Acres	Intentions for 2006	
	1-3 yrs	4-6 yrs	7-11yrs	12-21 yrs	22+ yrs			To Be Set	To be Removed
Standard	--	--	87	1,402	3,380	4,869	63.6	--	--
MM 111	--	--	--	3,514	1,100	4,614	44.3	--	--
MM 106	--	--	--	--	--	--	--	--	--
M7 OR M7a	--	400	--	524	1,595	2,519	24.7	--	--
M26	--	--	--	1,400	--	1,400	14.0	--	--
Mark	--	--	--	--	--	--	--	--	--
M9	--	--	--	--	--	--	--	--	--
Interstem	--	--	--	--	--	--	--	--	--
Bud9	--	--	--	--	--	--	--	--	--
G16	--	--	--	--	--	--	--	--	--
Other	--	--	--	--	--	--	--	--	--
Total	--	400	87	6,840	6,075	13,402	146.6	--	--

NW Greening

Rootstock	2003-05	2000-02	1995-99	1985-94	1984 & earlier	Total Trees	Total Acres	Intentions for 2006	
	1-3 yrs	4-6 yrs	7-11yrs	12-21 yrs	22+ yrs			To Be Set	To be Removed
Standard	--	--	--	--	583	583	7.3	--	--
MM 111	--	--	1,650	4,540	3,207	9,397	112.8	--	390
MM 106	--	--	--	--	--	--	--	--	--
M7 OR M7a	--	--	--	1,735	--	1,735	15.7	--	--
M26	--	--	--	--	--	--	--	--	--
Mark	--	--	--	--	--	--	--	--	--
M9	--	--	--	--	--	--	--	--	--
Interstem	--	--	--	--	--	--	--	--	--
Bud9	--	--	--	--	--	--	--	--	--
G16	--	--	--	--	--	--	--	--	--
Other	--	--	--	--	--	--	--	--	--
Total	--	--	1,650	6,275	3,790	11,715	135.8	--	390

Jonathan

Rootstock	2003-05	2000-02	1995-99	1985-94	1984 & earlier	Total Trees	Total Acres	Intentions for 2006	
	1-3 yrs	4-6 yrs	7-11yrs	12-21 yrs	22+ yrs			To Be Set	To be Removed
Standard	120	2	508	1,078	4,059	5,767	43.3	2	--
MM 111	--	--	68	898	856	1,822	18.0	--	--
MM 106	--	--	5	49	879	933	12.1	--	--
M7 OR M7a	30	950	316	--	30	1,326	8.4	2	--
M26	100	--	--	--	--	100	1.0	--	--
Mark	--	--	--	--	--	--	--	--	--
M9	--	--	22	--	--	22	--	--	--
Interstem	--	--	--	--	--	--	--	--	--
Bud9	--	--	--	--	--	--	--	--	--
G16	--	--	--	--	--	--	--	--	--
Other	--	--	--	--	--	--	--	--	--
Total	250	952	919	2,025	5,824	9,970	82.9	4	--

Dashes (--) indicate variety not reported or data not published to avoid disclosure of an individual operation and included "All Other Varieties".

Winesap

Rootstock	2003-05	2000-02	1995-99	1985-94	1984 & earlier	Total Trees	Total Acres	Intentions for 2006	
	1-3 yrs	4-6 yrs	7-11yrs	12-21 yrs	22+ yrs			To Be Set	To be Removed
Standard	--	62	143	600	1,165	1,970	25.5	--	4
MM 111	--	150	365	860	2,845	4,220	41.4	--	250
MM 106	--	--	450	56	360	866	7.1	--	--
M7 OR M7a	--	100	2,100	300	15	2,515	11.8	--	--
M26	--	100	35	--	--	135	1.2	--	--
Mark	--	--	--	--	--	--	--	--	--
M9	--	--	22	--	--	22	--	--	--
Interstem	--	--	22	--	--	22	--	--	--
Bud9	--	--	--	--	--	--	--	--	--
G16	--	--	--	--	--	--	--	--	--
Other	--	--	--	--	--	--	--	--	--
Total	--	412	3,137	1,816	4,385	9,750	87.2	--	254

Empire

Rootstock	2003-05	2000-02	1995-99	1985-94	1984 & earlier	Total Trees	Total Acres	Intentions for 2006	
	1-3 yrs	4-6 yrs	7-11yrs	12-21 yrs	22+ yrs			To Be Set	To be Removed
Standard	--	--	--	--	56	56	0.7	--	--
MM 111	--	--	156	840	748	1,744	16.6	10	3
MM 106	--	--	--	80	--	80	1.0	--	--
M7 OR M7a	30	100	--	2,098	330	2,558	23.0	--	--
M26	--	--	40	1,960	--	2,000	13.7	--	--
Mark	--	--	--	150	--	150	0.3	--	--
M9	--	--	--	--	--	--	0.0	--	--
Interstem	--	--	--	--	--	--	0.0	--	--
Bud9	--	100	--	--	--	--	1.0	--	--
G16	--	--	--	--	--	--	0.0	--	--
Other	--	--	--	--	--	--	0.0	--	--
Total	30	200	196	5,128	1,134	6,688	56.3	10	3

Braeburn

Rootstock	2003-05	2000-02	1995-99	1985-94	1984 & earlier	Total Trees	Total Acres	Intentions for 2006	
	1-3 yrs	4-6 yrs	7-11yrs	12-21 yrs	22+ yrs			To Be Set	To be Removed
Standard	--	--	--	--	--	--	--	--	--
MM 111	--	--	620	1,750	25	2,395	14.3	--	--
MM 106	--	--	--	--	--	--	--	--	--
M7 OR M7a	--	--	36	1,568	--	1,604	4.7	--	--
M26	--	--	--	2,000	--	2,000	4.3	--	--
Mark	--	--	--	--	--	--	--	--	--
M9	--	--	--	--	--	--	--	--	--
Interstem	--	--	--	--	--	--	--	--	--
Bud9	--	--	--	--	--	--	--	--	--
G16	--	--	--	--	--	--	--	--	--
Other	--	--	--	--	--	--	--	--	--
Total	--	--	656	5,408	25	6,089	23.9	--	--

Dashes (--) indicate variety not reported or data not published to avoid disclosure of an individual operation and included in "All Other Varieties".

Pippin

Rootstock	2003-05	2000-02	1995-99	1985-94	1984 & earlier	Total Trees	Total Acres	Intentions for 2006	
	1-3 yrs	4-6 yrs	7-11yrs	12-21 yrs	22+ yrs			To Be Set	To be Removed
Standard	--	2	6	--	20	28	--	--	1
MM 111	500	1,896	1,421	1,081	8	4,906	32.2	--	3
MM 106	--	--	--	--	--	--	--	--	--
M7 OR M7a	100	--	--	--	--	100	1.5	--	--
M26	--	--	--	--	--	--	--	--	--
Mark	--	--	--	--	--	--	--	--	--
M9	--	--	22	--	--	22	--	--	--
Interstem	--	--	--	--	--	--	--	--	--
Bud9	--	--	--	--	--	--	--	--	--
G16	--	--	--	--	--	--	--	--	--
Other	--	--	20	--	--	20	--	--	--
Total	600	1,898	1,469	1,081	28	5,076	35.0	--	4

Va Gold

Rootstock	2003-05	2000-02	1995-99	1985-94	1984 & earlier	Total Trees	Total Acres	Intentions for 2006	
	1-3 yrs	4-6 yrs	7-11yrs	12-21 yrs	22+ yrs			To Be Set	To be Removed
Standard	--	--	--	50	10	60	2.5	--	--
MM 111	--	--	1,585	2,161	757	4,503	32.2	--	--
MM 106	--	--	--	30	--	30	1.0	--	--
M7 OR M7a	--	--	--	300	--	300	2.0	--	--
M26	--	--	--	--	--	--	--	--	--
Mark	--	--	--	--	--	--	--	--	--
M9	--	--	--	--	--	--	--	--	--
Interstem	--	--	--	--	--	--	--	--	--
Bud9	--	--	--	--	--	--	--	--	--
G16	--	--	--	--	--	--	--	--	--
Other	--	--	--	--	--	--	--	--	--
Total	--	--	1,585	2,541	767	4,893	37.7	--	--

Cortland

Rootstock	2003-05	2000-02	1995-99	1985-94	1984 & earlier	Total Trees	Total Acres	Intentions for 2006	
	1-3 yrs	4-6 yrs	7-11yrs	12-21 yrs	22+ yrs			To Be Set	To be Removed
Standard	--	--	--	--	--	--	--	--	--
MM 111	--	--	--	1,450	--	1,450	10.3	--	--
MM 106	--	--	--	2,075	--	2,075	14.7	--	--
M7 OR M7a	--	--	--	--	--	--	--	--	--
M26	--	--	--	--	--	--	--	--	--
Mark	--	--	--	100	--	100	--	--	--
M9	--	20	--	--	--	20	--	--	--
Interstem	--	--	--	--	--	--	--	--	--
Bud9	--	--	--	--	--	--	--	--	--
G16	--	--	--	--	--	--	--	--	--
Other	--	--	--	--	--	--	--	--	--
Total	--	20	--	3,625	--	3,645	25.3	--	--

Dashes (---) indicate variety not reported or data not published to avoid disclosure of an individual operation and included in "All Other Varieties".

Winter Banana

Rootstock	2003-05	2000-02	1995-99	1985-94	1984 & earlier	Total Trees	Total Acres	Intentions for 2006	
	1-3 yrs	4-6 yrs	7-11yrs	12-21 yrs	22+ yrs			To Be Set	To be Removed
Standard	--	--	--	--	--	--	--	--	--
MM 111	--	--	--	--	--	--	--	--	--
MM 106	--	--	--	1,476	--	1,476	14.1	--	--
M7 OR M7a	--	--	--	494	410	904	6.1	--	--
M26	--	--	--	--	--	--	--	--	--
Mark	--	--	--	--	--	--	--	--	--
M9	--	--	--	--	--	--	--	--	--
Interstem	--	--	--	--	--	--	--	--	--
Bud9	--	--	--	--	--	--	--	--	--
G16	--	--	--	--	--	--	--	--	--
Other	--	--	--	--	--	--	--	--	--
Total	--	--	--	1,970	410	2,380	20.2	--	--

Jonagold

Rootstock	2003-05	2000-02	1995-99	1985-94	1984 & earlier	Total Trees	Total Acres	Intentions for 2006	
	1-3 yrs	4-6 yrs	7-11yrs	12-21 yrs	22+ yrs			To Be Set	To be Removed
Standard	--	--	130	--	--	130	1.4	--	--
MM 111	5	--	--	699	228	932	20.9	--	--
MM 106	--	--	--	--	--	--	--	--	--
M7 OR M7a	5	--	168	492	--	665	5.7	--	--
M26	--	--	590	--	--	590	3.0	--	--
Mark	--	--	--	--	--	--	--	--	--
M9	--	--	50	--	--	50	0.2	--	--
Interstem	--	--	--	--	--	--	--	--	--
Bud9	--	--	--	--	--	--	--	--	--
G16	--	--	--	--	--	--	--	--	--
Other	--	--	--	--	--	--	--	--	--
Total	10	--	938	1,191	228	2,367	31.2	--	--

Mutsu

Rootstock	2003-05	2000-02	1995-99	1985-94	1984 & earlier	Total Trees	Total Acres	Intentions for 2006	
	1-3 yrs	4-6 yrs	7-11yrs	12-21 yrs	22+ yrs			To Be Set	To be Removed
Standard	--	8	6	--	--	14	1.1	--	--
MM 111	--	--	420	202	150	772	14.1	--	--
MM 106	--	--	25	--	--	25	0.1	--	25
M7 OR M7a	--	100	50	707	--	857	7.9	--	--
M26	--	200	--	--	--	200	1.0	--	--
Mark	--	--	--	--	--	--	--	--	--
M9	--	--	--	--	--	--	--	--	--
Interstem	--	--	--	--	--	--	--	--	--
Bud9	--	--	100	--	--	100	1.0	--	--
G16	--	--	--	--	--	--	--	--	--
Other	--	--	--	--	--	--	--	--	--
Total	--	308	612	946	150	2,016	25.7	--	25

Dashes (---) indicate variety not reported or data not published to avoid disclosure of an individual operation and included in "All Other Varieties".

Number of Trees by Rootstock, Age, and Season, 2005

SUMMER

Rootstock	2003-05	2000-02	1995-99	1985-94	1984 & earlier	Total Trees	Total Acres	Intentions for 2006	
	1-3 yrs	4-6 yrs	7-11yrs	12-21 yrs	22+ yrs			To Be Set	To be Removed
Standard	21	25	58	283	15,108	15,495	278.2	10	419
MM 111	924	525	1,161	6,920	5,588	15,118	156.8	--	--
MM 106	--	--	1,640	3,130	3,425	8,195	55.3	--	--
M7 OR M7a	20	910	3,866	1,720	110	6,626	58.6	--	--
M26	--	--	6,842	747	--	7,589	47.1	--	--
Mark	--	--	100	250	--	350	1.4	--	--
M9	--	--	84	100	40	224	1.5	--	--
Interstem	--	--	1,480	--	--	1,480	4.0	--	--
Bud9	--	--	--	--	--	--	--	--	--
G16	--	--	--	--	--	--	--	--	--
Other	--	--	--	--	--	--	--	--	--
Total	965	1,460	15,231	13,152	24,271	55,079	603.0	12	421

FALL

Rootstock	2003-05	2000-02	1995-99	1985-94	1984 & earlier	Total Trees	Total Acres	Intentions for 2006	
	1-3 yrs	4-6 yrs	7-11yrs	12-21 yrs	22+ yrs			To Be Set	To be Removed
Standard	540	30	1,085	3,625	8,683	13,963	169.7	51	2
MM 111	600	862	4,358	7,738	2,989	16,547	155.1	40	75
MM 106	1,325	611	2,420	4,375	2,548	11,279	81.1	--	--
M7 OR M7a	484	4,118	2,444	17,665	3,097	27,808	186.5	2	233
M26	1,424	8,405	8,059	20,536	902	39,326	184.6	100	--
Mark	--	--	35	2,064	--	2,099	3.9	--	--
M9	4,100	12,130	6,688	22,715	--	45,633	150.3	4,000	--
Interstem	14,265	422	1,314	200	--	16,201	59.8	4,735	--
Bud9	216	350	--	50	--	616	5.6	0	--
G16	--	85	--	--	--	85	1.2	0	--
Other	60	--	--	97	--	157	1.7	0	--
Total	23,014	27,013	26,403	79,065	18,219	173,714	999.5	8,928	310

WINTER

Rootstock	2003-05	2000-02	1995-99	1985-94	1984 & earlier	Total Trees	Total Acres	Intentions for 2006	
	1-3 yrs	4-6 yrs	7-11yrs	12-21 yrs	22+ yrs			To Be Set	To be Removed
Standard	2,094	3,345	13,692	52,176	147,324	218,631	2,046.7	121	8,161
MM 111	7,051	30,290	59,709	214,739	133,240	445,029	4,175.5	6,148	10,789
MM 106	20	2,000	6,504	22,225	22,923	53,672	423.0	--	875
M7 OR M7a	21,646	14,610	69,684	145,363	32,401	283,704	1,882.6	27	528
M26	31,565	44,946	65,128	75,813	4,219	221,671	1,069.7	100	2,000
Mark	--	400	1,500	1,825	--	3,725	30.8	--	--
M9	--	12,841	38,259	3,476	--	54,576	140.6	--	--
Interstem	--	225	22	285	--	532	1.6	--	--
Bud9	--	798	880	--	--	1,678	6.7	--	--
G16	--	462	--	--	--	462	1.5	--	--
Other	--	2,349	20	313	75	2,767	21.8	25	50
Total	62,386	112,266	253,398	516,215	340,182	1,286,447	9,800.5	6,421	22,403

Dashes (---) indicate variety not reported or data not published to avoid disclosure of an individual operation and included in "All Other Varieties".

VIRGINIA COMMERCIAL PEACH PRODUCTION SURVEY HIGHLIGHTS

The number of peach trees in Virginia decreased 2 percent between 2001 and 2005 and now totals 134,382 trees. A commercial peach orchard is defined as any grower with at least 100 peach trees maintained for production. Commercial growers reported that 9 percent of the total trees were nonbearing in 2005 compared to 10 percent in 2001.

Peach acreage decreased 18 percent, from 1,404 in 2001 to 1,156 acres in 2005. The number of commercial peach orchards decreased slightly to 128 growers in 2005 compared to 130 growers in 2001.

Peach tree numbers in 2005 were up 38 percent compared to 2001 in the Piedmont district and down in every other district. The Piedmont and Shenandoah districts are the two largest with 75,664 and 23,552 trees, respectively. These two districts have nearly 74 percent of all peach trees in Virginia. Of the districts that lost trees between 2001 and 2005, Shenandoah had the largest decrease with 21,439 fewer trees in 2005.

Trees in the 12 to 21 years old range accounts for the largest portion of the total trees at 31 percent. However, the distribution of trees by age is close with 27 percent of the trees more than 22 years old, 21 percent less than 7 years old, and 21 percent 7 to 11 years old.

Loring remains the number one peach variety in the Commonwealth with 13,102 trees or nearly 10 percent of the total trees. The top five varieties of peaches grown were Loring, Redhaven, Redskin, Blake and Baby Gold. However, the number of trees in 2005 for the sum of all five of these varieties decreased compared to 2001. The varieties ranked in the top ten that showed an increase in trees for 2005 were Blake, Jonboy and White Lady.



Number of Growers, Trees and Acres by Year

Year of Survey	Number of Growers	Total Acres	Total	Number of Trees		Non-bearing Trees as Percent of Total
				Non Bear	Bearing	
1937	943	NA	1,183,775	543,449	640,326	45.9
1949	799	12,192	1,115,684	137,904	977,780	12.4
1956	635	9,452	827,932	178,910	649,022	21.6
1963	423	7,038	556,433	113,947	442,486	20.5
1967	381	5,737	458,974	133,898	325,076	29.2
1972	324	4,841	371,449	71,872	299,577	19.3
1977	263	3,813	337,643	71,279	266,364	21.1
1982	210	2,989	267,803	38,253	229,550	14.3
1987	166	2,555	208,834	24,506	184,328	11.7
1992	154	2,344	208,381	20,397	187,984	9.8
1997	127	1,781	192,336	23,469	168,867	12.2
2001	130	1,404	137,189	13,984	123,205	10.2
2005	128	1,156	134,382	12,337	122,045	9.2

NA – Not Available



Number of Growers, Total Acres and Trees by Area, 2005

Area	Number of Growers	Total Acres	Total	Number of Trees		Non-bearing Trees as Percent of Total
				Non Bearing 1/	Bearing	
Shenandoah Valley						
Total	21	227.5	23,552	3,540	20,012	15.0
Piedmont						
Total	34	499.0	75,664	6,838	68,826	9.0
Roanoke						
Total	20	119.0	9,240	197	9,043	2.1
Southwest						
Total	31	187.8	17,368	1,555	15,813	9.0
All Other Counties						
Total	22	122.8	8,558	207	8,351	2.4
State Total	128	1,156.1	134,382	12,337	122,045	9.2

1/ Trees 1-3 years of age.

Number of Growers and Total Trees by Area, 1992-2005

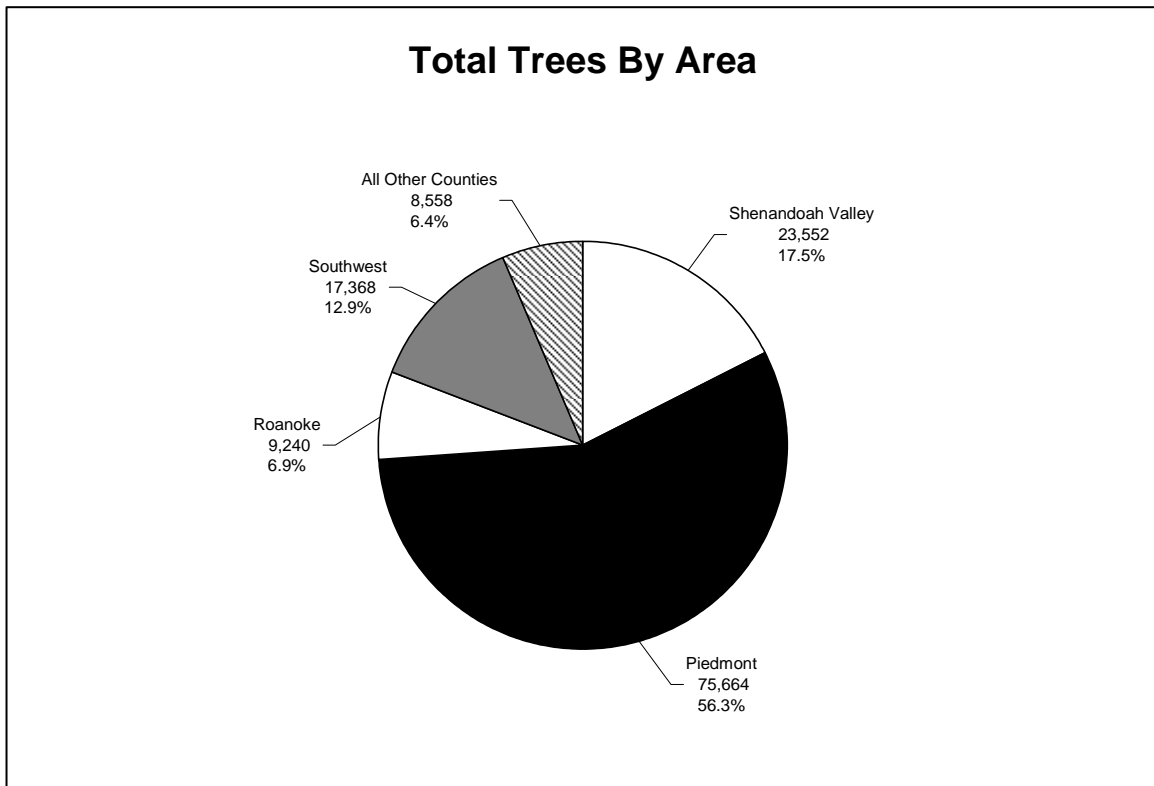
Area	1992		1997		2001		2005	
	Number of Growers 1/	Total Trees	Number of Growers 1/	Total Trees	Number of Growers 1/	Total Trees	Number of Growers 1/	Total Trees
Shenandoah Valley								
Total	33	83,897	29	73,507	23	44,991	21	23,552
Piedmont								
Total	36	49,063	30	53,551	35	54,942	34	75,664
Roanoke								
Total	20	18,915	17	12,548	20	11,467	20	9,240
Southwest								
Total	42	32,603	30	27,386	33	18,406	31	17,368
All Other Counties								
Total	23	23,903	23	25,344	19	7,383	22	8,558
State Total	154	208,381	127	192,336	130	137,189	128	134,382

1/ May not add due to multi-county operations.

Number of Trees by Area and Age Group, 2005

Area	2003-5	2000-02	1995-99	1985-94	1984 & earlier	Total Trees	Total Acres	Intentions for 2006	
	1-3 yrs	4-6 yrs	7-11 yrs	12-21 yrs	22+ yrs			To Be Set	To be Removed
Shenandoah Valley									
Total	3,540	3,870	5,281	9,991	870	23,552	227.5	345	2,912
Piedmont									
Total	6,838	8,784	15,328	15,542	29,172	75,664	499.0	92	2
Roanoke									
Total	197	485	3,128	3,673	1,757	9,240	119.0	--	112
Southwest									
Total	1,555	2,195	2,404	9,348	1,866	17,368	187.8	3	650
All Other Counties									
Total 1/	207	1,619	1,809	2,498	2,425	8,558	122.8	--	200
State Total	12,337	16,953	27,950	41,052	36,090	134,382	1,156.1	440	3,876

Dashes (--) indicate data not published to avoid disclosure of an individual operation. 1/ Counties not included in above geographical areas.



Number of Trees by Variety, 1972-2005

Varieties	1972	1977	1982	1987	1992	1997	2001	2005
Loring	16,161	25,015	25,286	22,479	27,313	25,779	17,458	13,102
Redhaven	23,885	30,519	25,363	19,665	18,496	18,480	14,206	11,533
Redskin	14,910	16,218	12,403	10,989	13,541	14,145	12,563	7,832
Blake	27,170	27,463	20,332	11,454	9,096	8,317	6,984	7,023
Babygold	--	--	--	4,460	10,397	8,988	5,501	5,154
Cresthaven	--	1,232	4,871	6,146	7,121	9,198	7,249	3,954
Monroe	3,762	7,082	6,278	5,472	5,572	5,382	3,985	3,441
Bisco	--	--	--	4,693	4,119	5,233	5,157	3,424
Jonboy	--	--	--	--	--	--	--	2,264
White Lady	--	--	--	--	--	--	1,578	2,158
Sunhigh	37,164	34,791	19,667	10,617	13,654	10,223	4,661	2,085
Rio Oso Gem	--	--	--	--	--	--	2,418	2,048
Bounty	--	--	--	--	--	--	2,311	1,963
Harken	--	--	--	--	--	--	1,971	1,898
Hale Harrison Brilliant	11,357	10,237	6,203	2,274	1,231	1,890	1,755	1,725
Jefferson	8,324	6,777	6,240	4,996	3,875	2,196	2,745	1,658
Encore	--	--	--	--	--	1,745	1,409	1,241
Salem	--	--	--	--	--	--	--	1,145
Georgia Belle	9,217	7,914	4,370	2,723	4,520	2,023	1,978	1,115
Tyler	--	--	--	--	2,107	1,894	--	1,085
Flaming Fury	--	--	--	--	--	--	--	1,054
Elberta	51,111	28,833	16,108	8,499	6,474	4,156	2,300	--
Washington	12,833	11,986	9,394	5,962	4,211	1,822	2,111	--
Madison	7,726	8,525	6,930	4,397	2,288	1,696	1,889	--
Glo Haven	--	--	--	6,522	3,646	4,531	1,502	--
Jerseyqueen	--	--	--	6,491	2,124	1,062	1,417	--
Jim Dandee	--	--	--	--	--	--	1,383	--
Bellaire	--	--	--	--	--	--	1,367	--
White Hale	--	--	--	--	--	--	1,354	--
Suncling	--	--	--	12,314	10,012	10,016	--	--
Sunbright	--	--	--	--	1,518	2,003	--	--
O'Henry	--	--	--	--	--	1,586	--	--
Topaz	--	--	--	--	--	1,191	--	--
All Other Varieties	147,829	121,051	104,358	58,681	57,066	48,780	30,137	57,480
State Total	371,449	337,643	267,803	208,834	208,381	192,336	137,389	134,382

Dashes (---) indicate variety not reported or data not published to avoid disclosure of an individual operation and included in "All Other Varieties".

Number of Peach Trees by Variety and Age Group, 2005 1/

Variety	2003-05	2000-02	1995-99	1985-94	1984 & earlier	Total Trees	Total Acres	Intentions for 2006	
	1-3 yrs	4-6 yrs	7-11yrs	12-21 yrs	22+ yrs			To Be Set	To be Removed
Loring	234	1,771	1,890	4,770	4,437	13,102	141.6	--	90
Redhaven	165	622	3,402	4,746	2,598	11,533	97.6	51	398
Redskin	629	494	555	4,172	1,982	7,832	71.2	--	1,030
Blake	--	10	952	1,906	4,155	7,023	64.6	--	--
Babygold	1,400	10	--	3,734	10	5,154	45.1	--	--
Cresthaven	11	1,016	877	874	1,176	3,954	47.1	4	26
Monroe	120	--	95	1,503	1,723	3,441	23.3	--	75
Bisco	--	--	346	1,044	2,034	3,424	26.3	--	--
Jonboy	925	409	165	765	--	2,264	18.1	--	700
White Lady	166	718	1,265	9	--	2,158	11.1	--	--
Sunhigh	25	510	430	590	530	2,085	20.6	--	--
Rio Oso Gem	--	--	--	112	1,936	2,048	13.6	--	275
Bounty	125	10	1,488	340	--	1,963	22.0	--	340
Harken	--	--	--	241	1,657	1,898	7.7	--	--
Hale Harrison									
Brilliant	--	--	175	538	1,012	1,725	14.6	--	--
Jefferson	--	--	75	235	1,348	1,658	12.7	--	--
Encore	29	20	993	--	199	1,241	14.4	--	--
Salem	100	--	995	50	--	1,145	3.1	--	--
Georgia Belle	32	227	194	382	280	1,115	15.1	2	25
Tyler	--	--	20	161	904	1,085	9.0	--	--
Flaming Fury	--	14	330	560	150	1,054	8.2	--	530
Other 2/	8,376	11,122	13,703	14,320	9,959	57,480	469.1	383	387
State Total	12,337	16,953	27,950	41,052	36,090	134,382	1,156.1	440	3,876

1/ Selected Varieties. 2/ Includes miscellaneous varieties and varieties not specified. Dashes (---) indicate variety not reported or data not published to avoid disclosure of an individual operation and included in "All Other Varieties".

SURVEY OBJECTIVES

The purpose of the Virginia Orchard Survey is to provide the various segments of the fruit and related industries with a detailed inventory of apple and peach trees acreage. The fruit and related industries that need and use fruit tree inventories includes growers, wholesalers, cooperatives, brokers, processors, retailers, input suppliers, research workers, extension agents, and policy makers.

Growers provide this important information which keeps them abreast to the changes and trends taking place and enables them to plan accordingly. Growers also benefit from improved services which are channeled back through the analysis of the data by the other related segments of the fruit industry.

SURVEY OVERVIEW

The 2005 Orchard Survey is an enumeration of all known “commercial” apple and peach producers operating in Virginia. A commercial apple or peach orchard is defined as having at least 100 trees maintained by regular spraying and pruning programs. Fruit operations which did not meet these requirements were excluded from the survey. Growers were asked to provide inventory numbers by county where trees were located. Multiple county fruit growers were also counted as growers for each county in which they maintained an orchard. These growers were only counted once in the State total. Therefore, the sum of the county growers can be greater than the State total.

SURVEY PROCEDURES

Questionnaires were mailed to all known orchardists during late 2005. Trained telephone or field enumerators contacted all non-respondents. Names of growers obtained during the survey were mailed a questionnaire or were contacted in person or by telephone. A total of 789 fruit growers were contacted during the survey. Of these, 549 did not qualify as a commercial orchard. Also, growers were asked to list the names of nearby orchards. These names were matched against the survey list. Any name not on the list was then contacted in person or by telephone. This procedure provided a measure of incompleteness of the list.