
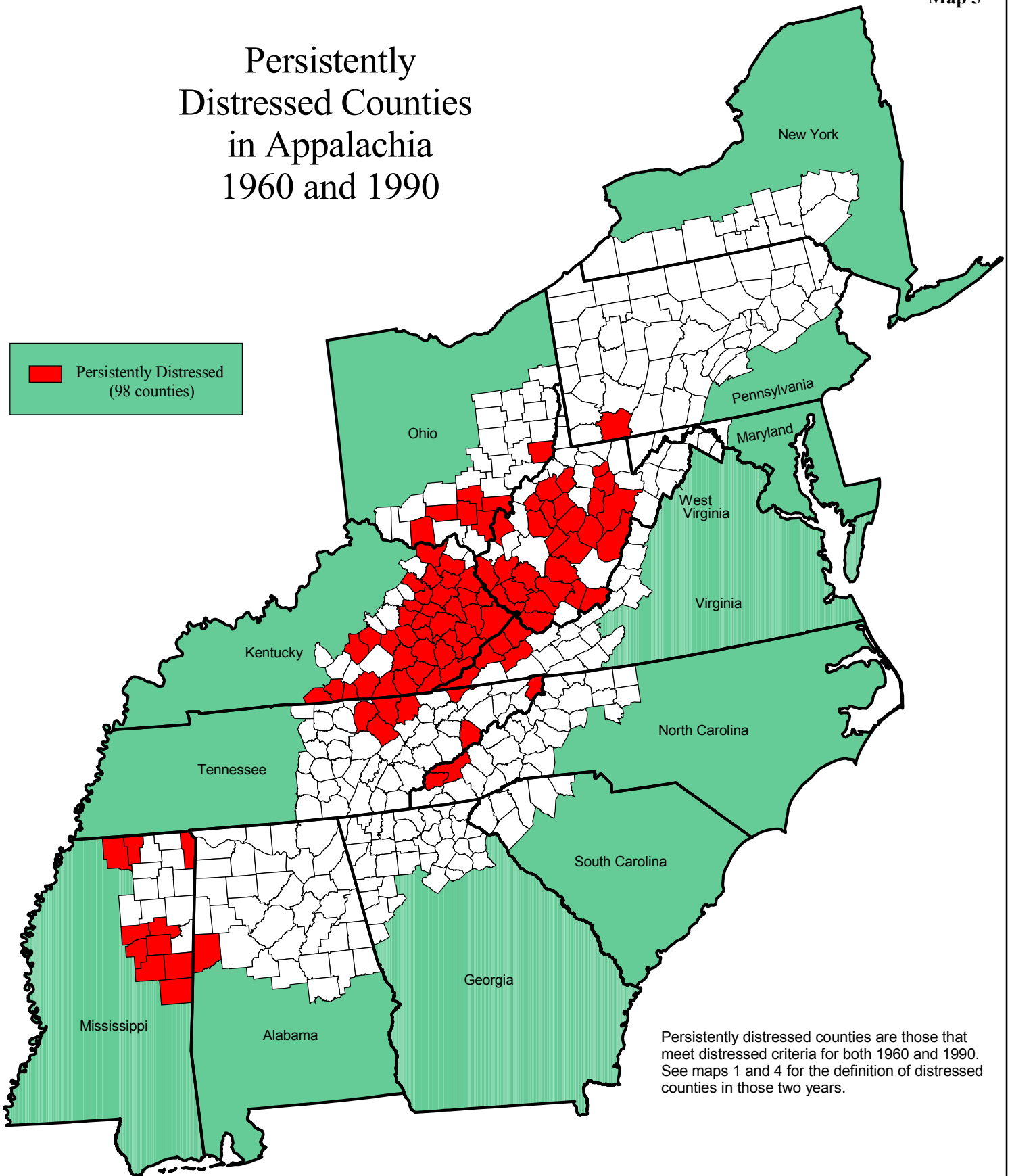


Persistently Distressed Counties in Appalachia 1960 and 1990


 Persistently Distressed
(98 counties)

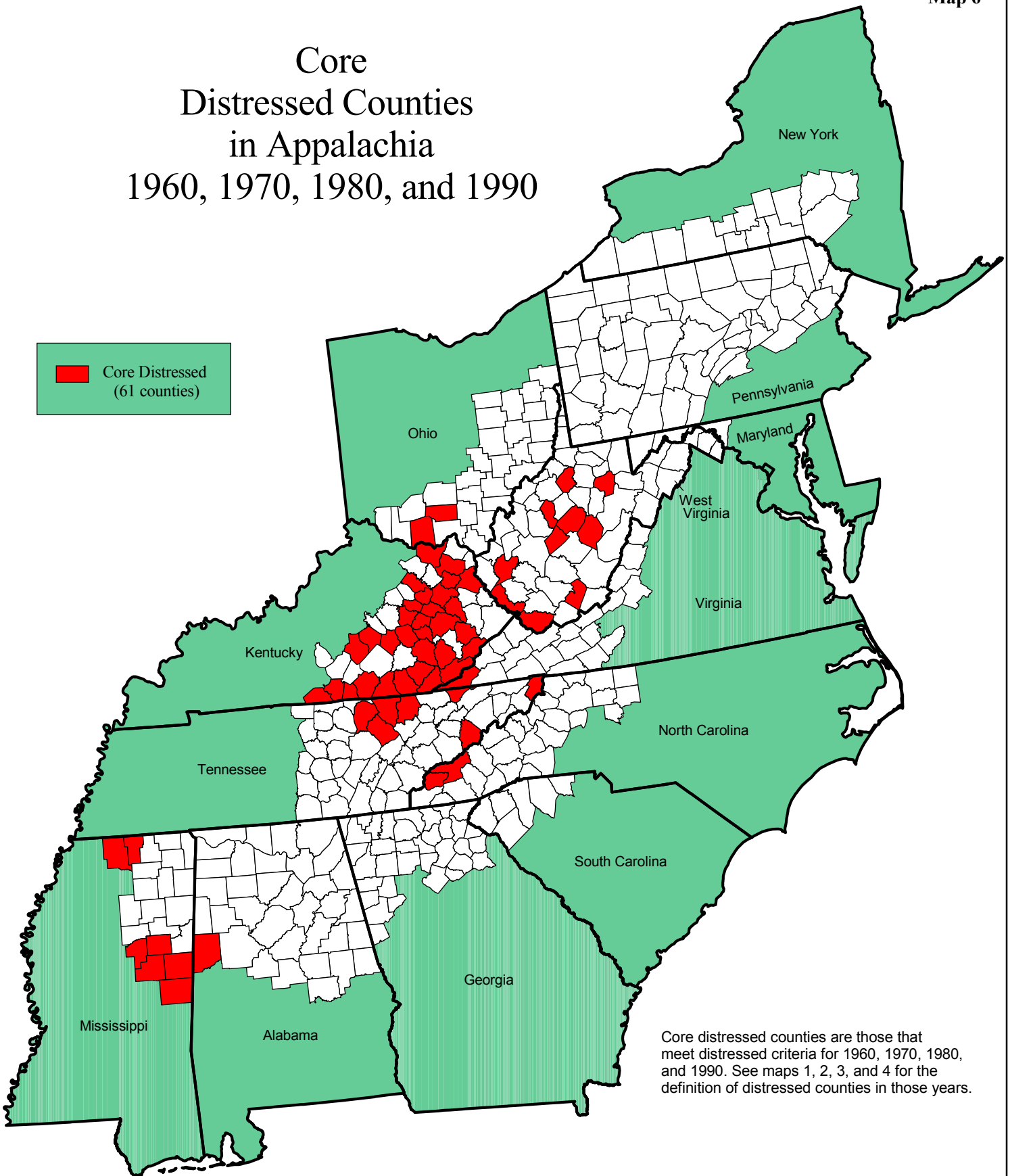


Persistently distressed counties are those that meet distressed criteria for both 1960 and 1990. See maps 1 and 4 for the definition of distressed counties in those two years.



Core Distressed Counties in Appalachia 1960, 1970, 1980, and 1990

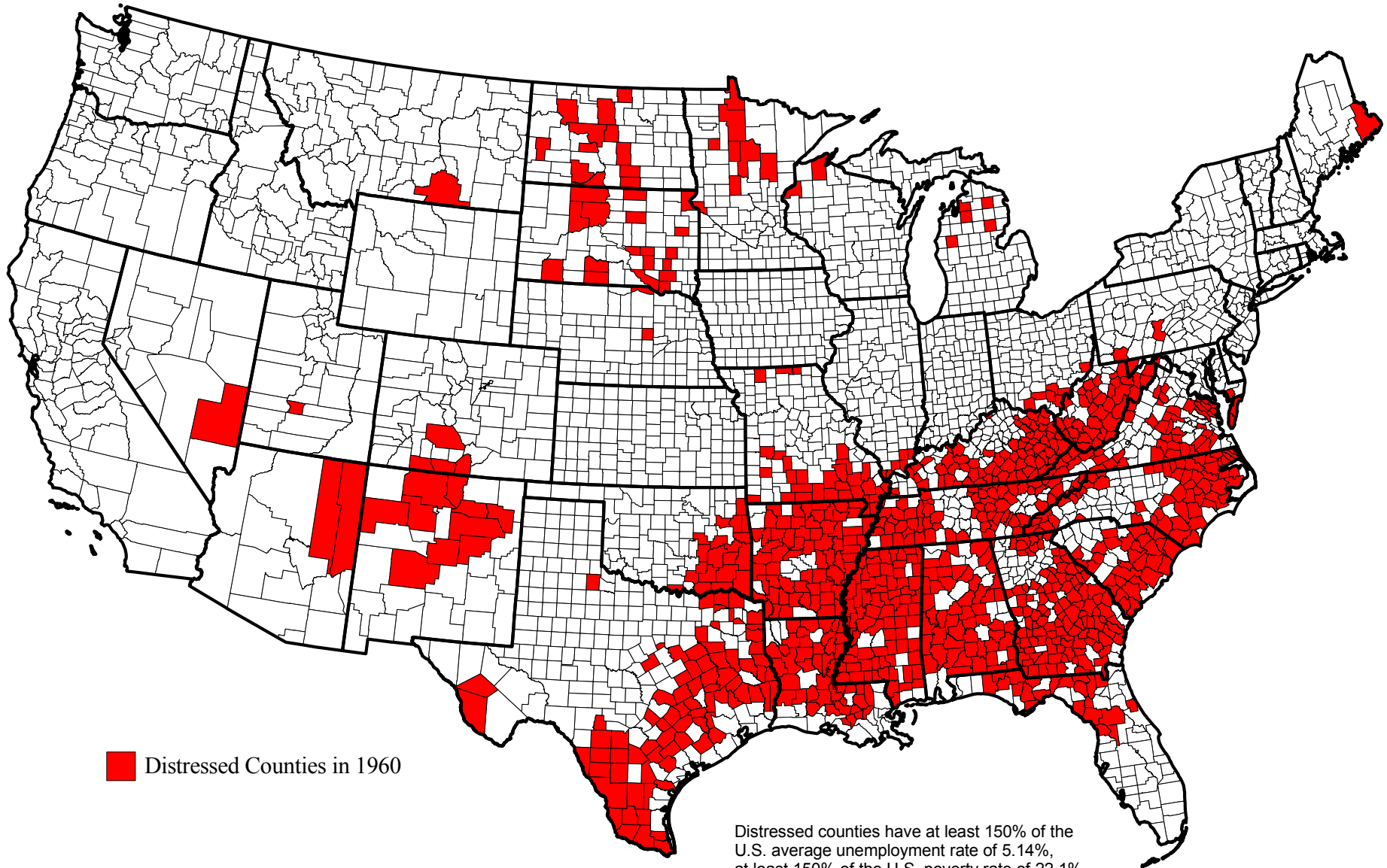
 Core Distressed (61 counties)



Core distressed counties are those that meet distressed criteria for 1960, 1970, 1980, and 1990. See maps 1, 2, 3, and 4 for the definition of distressed counties in those years.



Distressed Counties in the United States, 1960



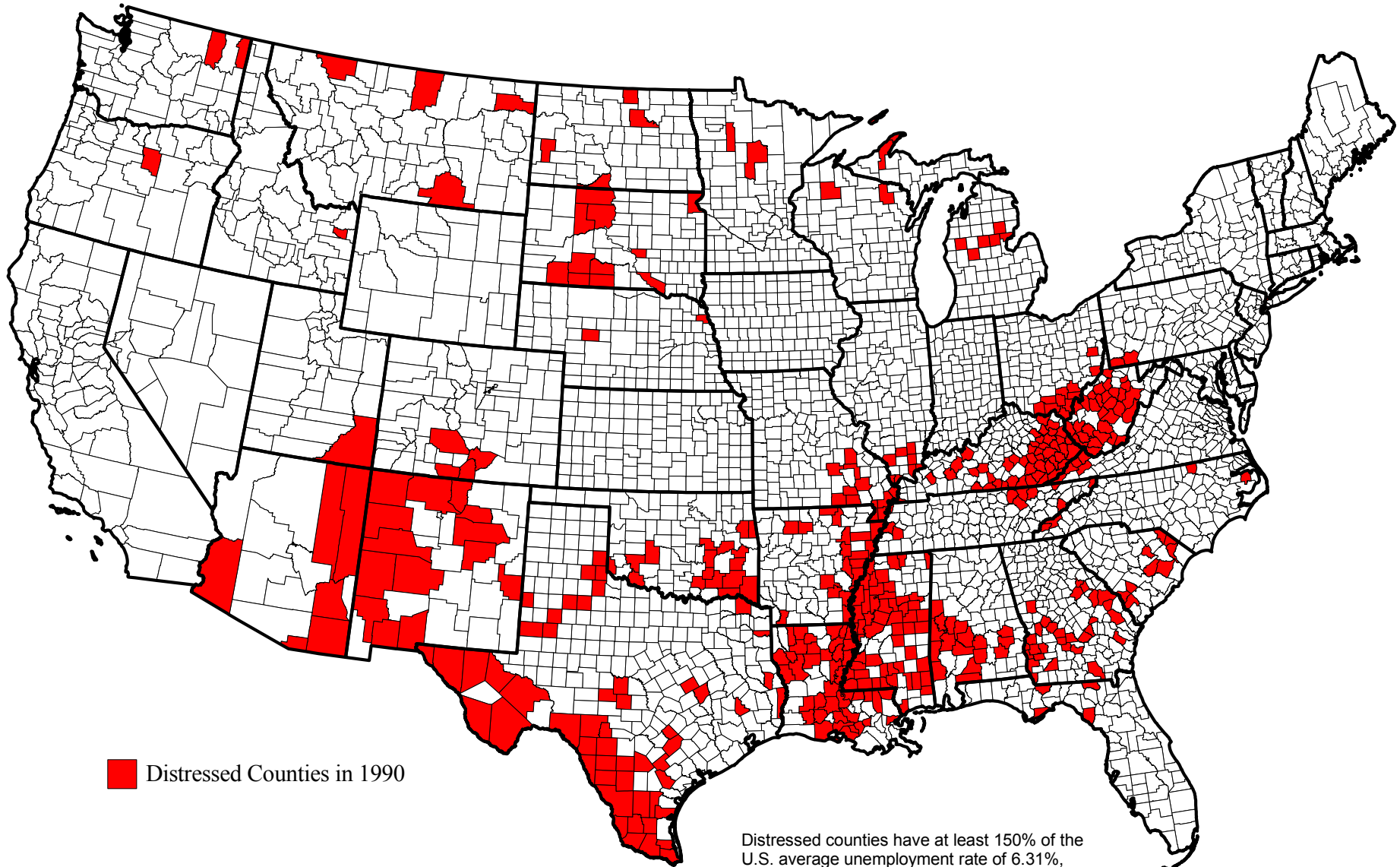
■ Distressed Counties in 1960

Distressed counties have at least 150% of the U.S. average unemployment rate of 5.14%, at least 150% of the U.S. poverty rate of 22.1%, and 67% or less of the U.S. per capita market income of \$1,639, or 200% poverty and one of the other two distressed indicators.



Data Sources:
Unemployment: Census data from USDA, Economic Research Service (ERS), 1960;
Poverty: Office of Economic Opportunity data from USDA, ERS, 1960;
Income: U.S. Department of Commerce, Bureau of the Census, 1960.

Distressed Counties in the United States, 1990



■ Distressed Counties in 1990

Distressed counties have at least 150% of the U.S. average unemployment rate of 6.31%, at least 150% of the U.S. poverty rate of 13.12%, and 67% or less of the U.S. per capita market income of \$15,636, or 200% poverty and one of the other two distressed indicators.



Data Sources:
Unemployment: U.S. Department of Commerce, Bureau of the Census, 1990;
Poverty: U.S. Department of Commerce, Bureau of the Census, 1990;
Income: U.S. Department of Commerce, Bureau of Economic Analysis, 1990.