
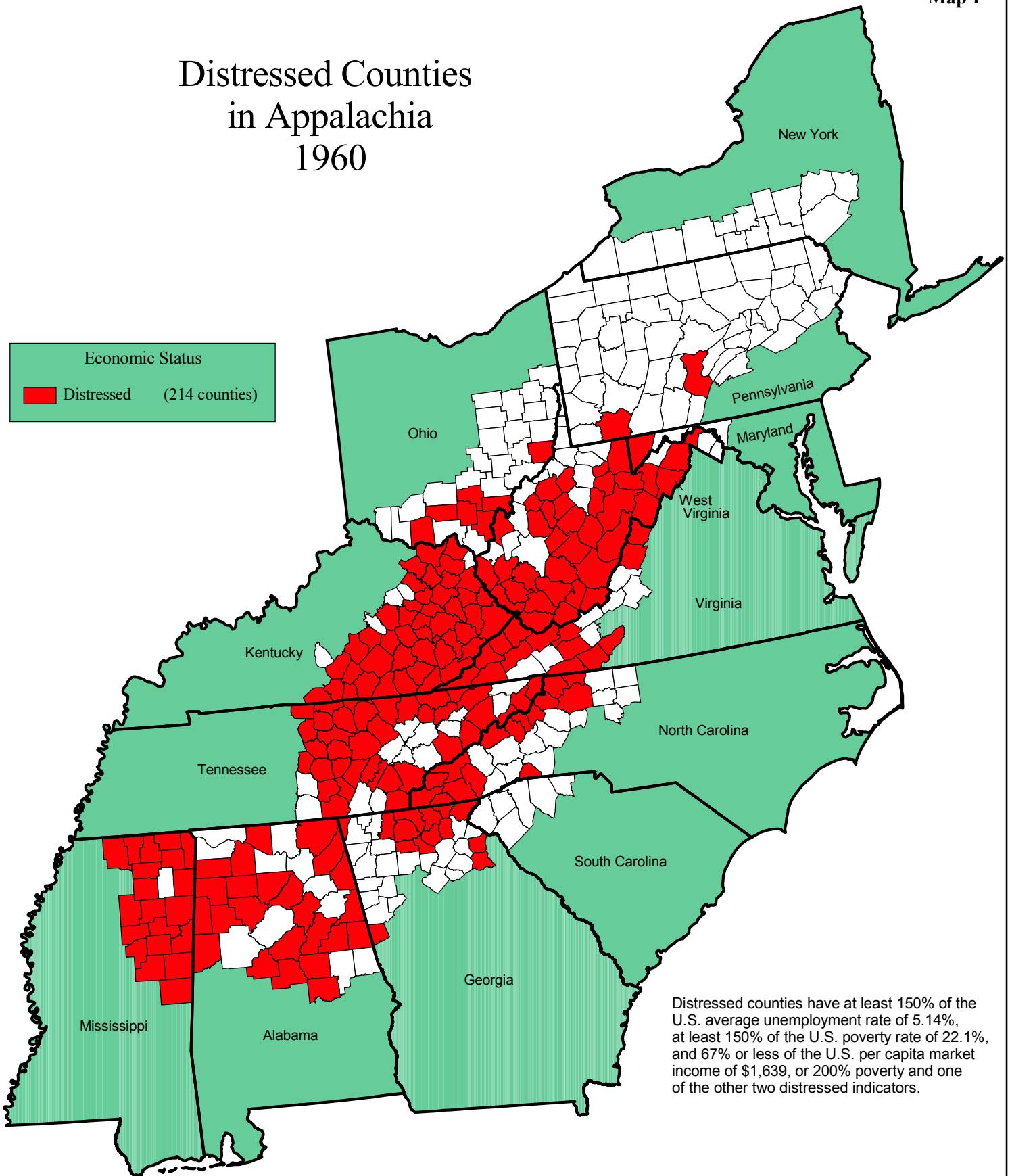


**VII. Appendix B: Maps 1-8**

# Distressed Counties in Appalachia 1960

Economic Status

 Distressed (214 counties)




Distressed counties have at least 150% of the U.S. average unemployment rate of 5.14%, at least 150% of the U.S. poverty rate of 22.1%, and 67% or less of the U.S. per capita market income of \$1,639, or 200% poverty and one of the other two distressed indicators.

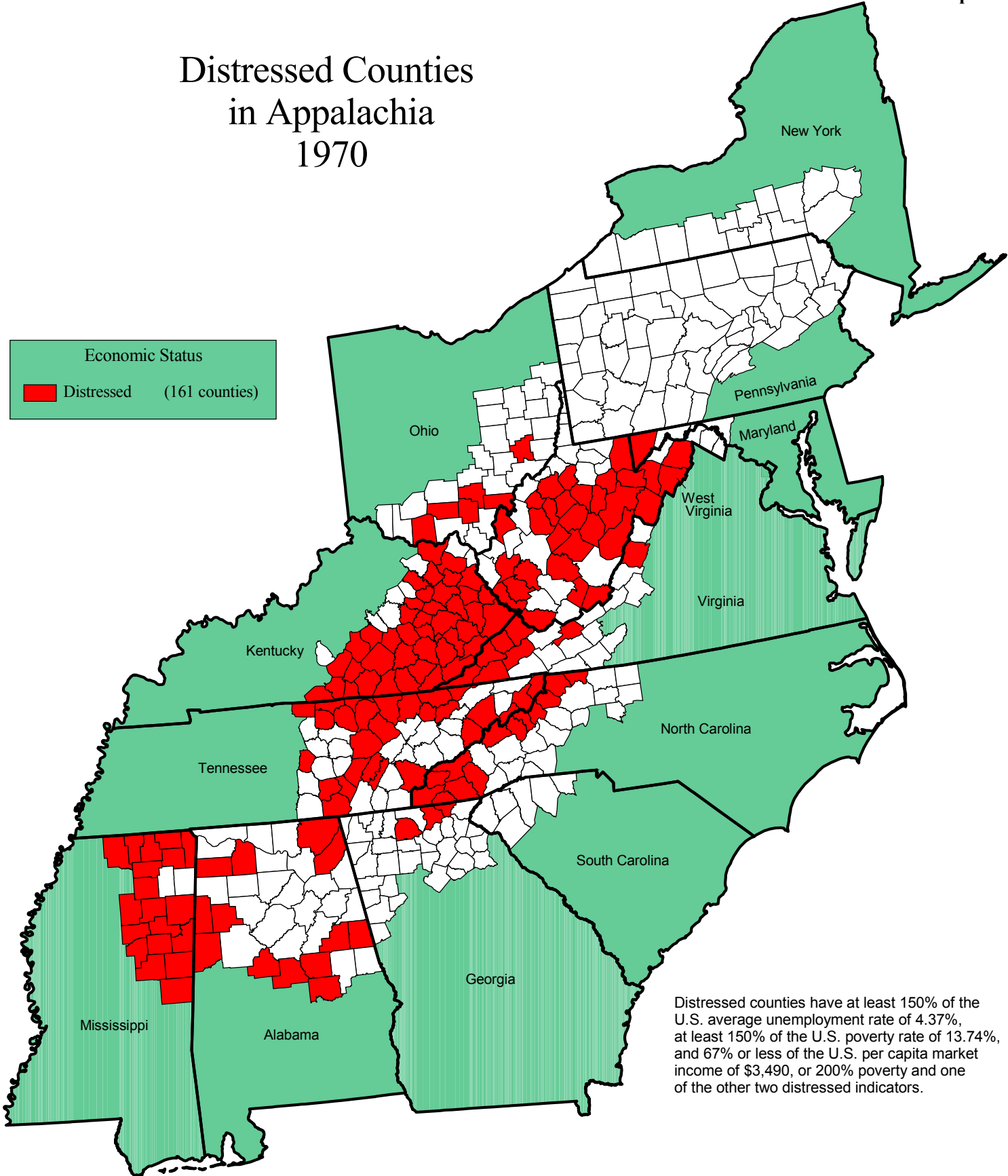
Data Sources:  
Unemployment: Census data from USDA, Economic Research Service (ERS), 1960;  
Poverty: Office of Economic Opportunity data from USDA, ERS, 1960;  
Income: U.S. Department of Commerce, Bureau of the Census, 1960.



# Distressed Counties in Appalachia 1970

Economic Status

 Distressed (161 counties)




Distressed counties have at least 150% of the U.S. average unemployment rate of 4.37%, at least 150% of the U.S. poverty rate of 13.74%, and 67% or less of the U.S. per capita market income of \$3,490, or 200% poverty and one of the other two distressed indicators.

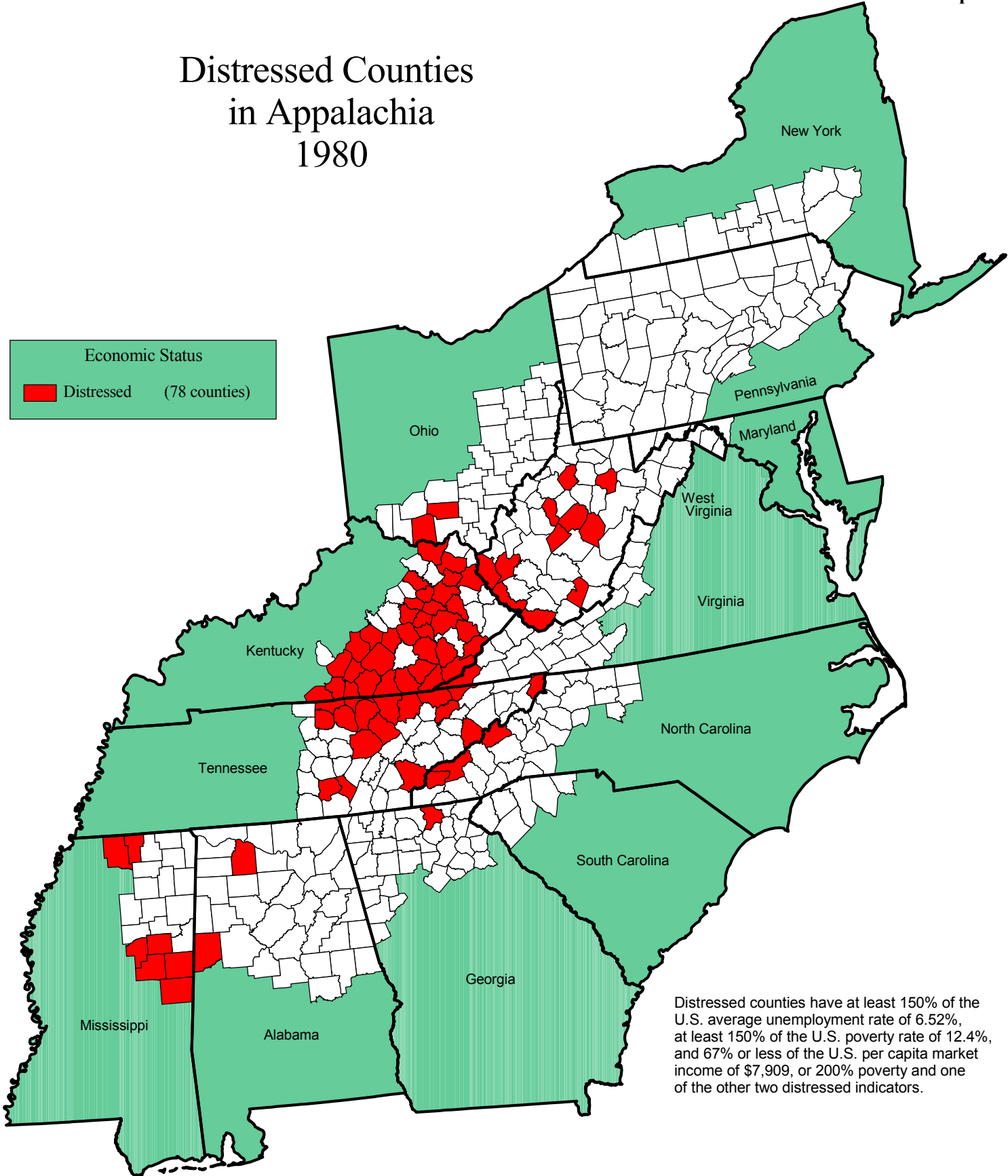
Data Sources:  
Unemployment: Census data from USDA, Economic Research Service (ERS), 1970;  
Poverty: Census data from USDA, ERS, 1970;  
Income: U.S. Department of Commerce, Bureau of Economic Analysis, 1970.



# Distressed Counties in Appalachia 1980

**Economic Status**

 Distressed (78 counties)




Distressed counties have at least 150% of the U.S. average unemployment rate of 6.52%, at least 150% of the U.S. poverty rate of 12.4%, and 67% or less of the U.S. per capita market income of \$7,909, or 200% poverty and one of the other two distressed indicators.

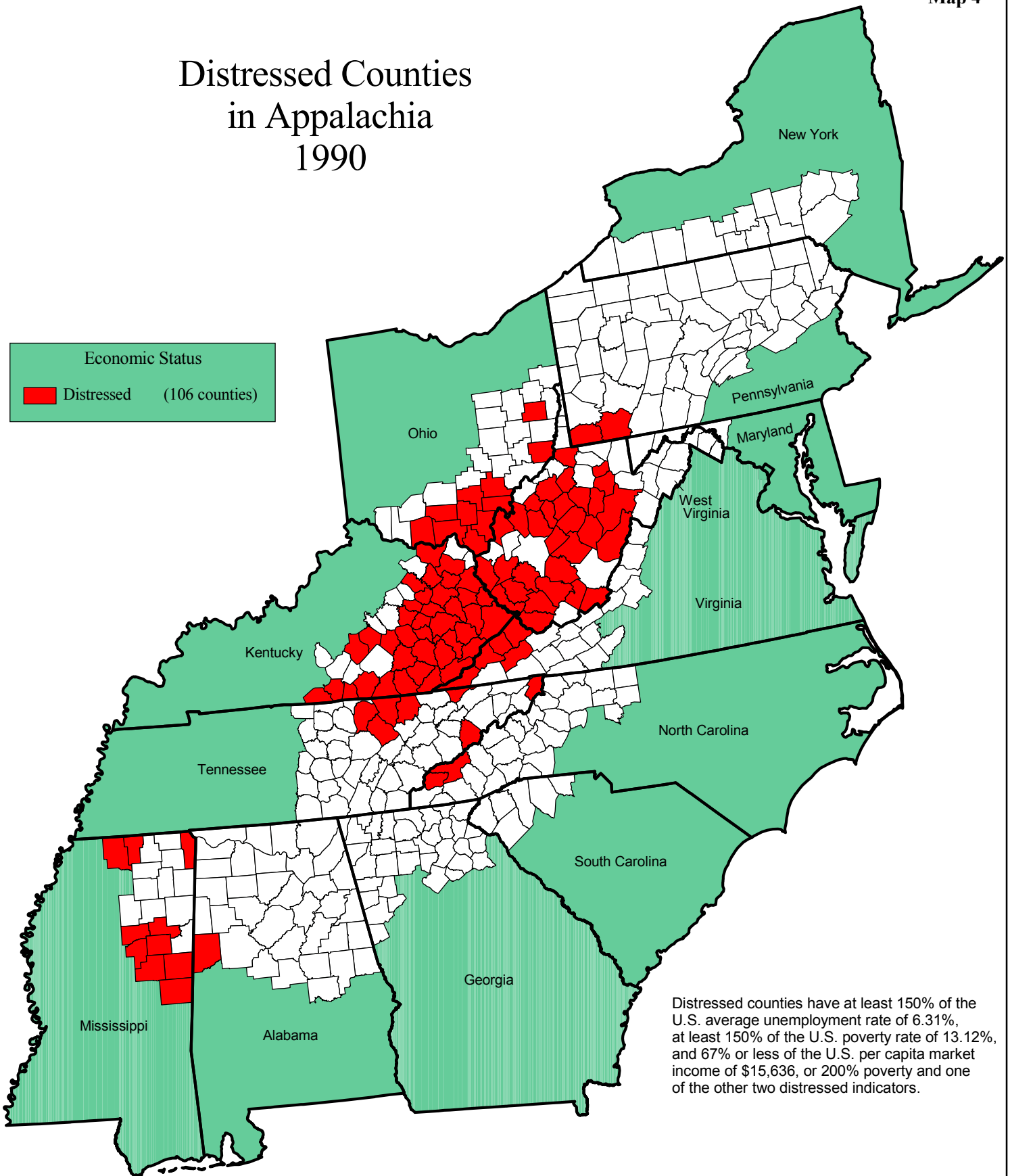
Data Sources:  
Unemployment: U.S. Department of Commerce, Bureau of the Census, 1980;  
Poverty: U.S. Department of Commerce, Bureau of the Census, 1980;  
Income: U.S. Department of Commerce, Bureau of Economic Analysis, 1980.



# Distressed Counties in Appalachia 1990

Economic Status

 Distressed (106 counties)



Distressed counties have at least 150% of the U.S. average unemployment rate of 6.31%, at least 150% of the U.S. poverty rate of 13.12%, and 67% or less of the U.S. per capita market income of \$15,636, or 200% poverty and one of the other two distressed indicators.

Data Sources:  
Unemployment: U.S. Department of Commerce, Bureau of the Census, 1990;  
Poverty: U.S. Department of Commerce, Bureau of the Census, 1990;  
Income: U.S. Department of Commerce, Bureau of Economic Analysis, 1990.

