

III. A.3 Premature Cancer Mortality

National patterns of premature cancer mortality are similar to those of premature heart disease mortality; with the addition of a northeastern shift in high mortality rates (see Section II, Figure 6). High rates of premature cancer mortality are again clustered primarily in the Southeastern U.S. in the Mississippi Delta, counties among states along the Atlantic coast, and in the Central Appalachian region. In the Appalachian region, high premature cancer death rates are more strongly concentrated in the Central portion of the region when compared with premature heart disease mortality.

Statistically significant associations between socioeconomic indicators and premature cancer mortality are consistently found among counties in the Southeastern states, Mississippi Delta region, Central Appalachian, and Western regions of the country (see Figures 20-24). Within Appalachia, significant associations are primarily limited to counties in the Central portion of the region. Many of the Appalachian counties in the Southern Appalachian states do not show significant associations between socioeconomic conditions and premature cancer mortality that were apparent for both all-cause and heart disease mortality. This may be indicative of variable disease etiologies as well as the variable nature of local associations with underlying socioeconomic conditions.

High poverty, unemployment, and percentages of persons without health insurance, and low incomes are very prominent among counties in the Southeast, Mississippi Delta, and Central Appalachia showing positive association with premature cancer mortality.

Figure 20. National Associations between Premature Cancer Mortality and Percent Urban Population.

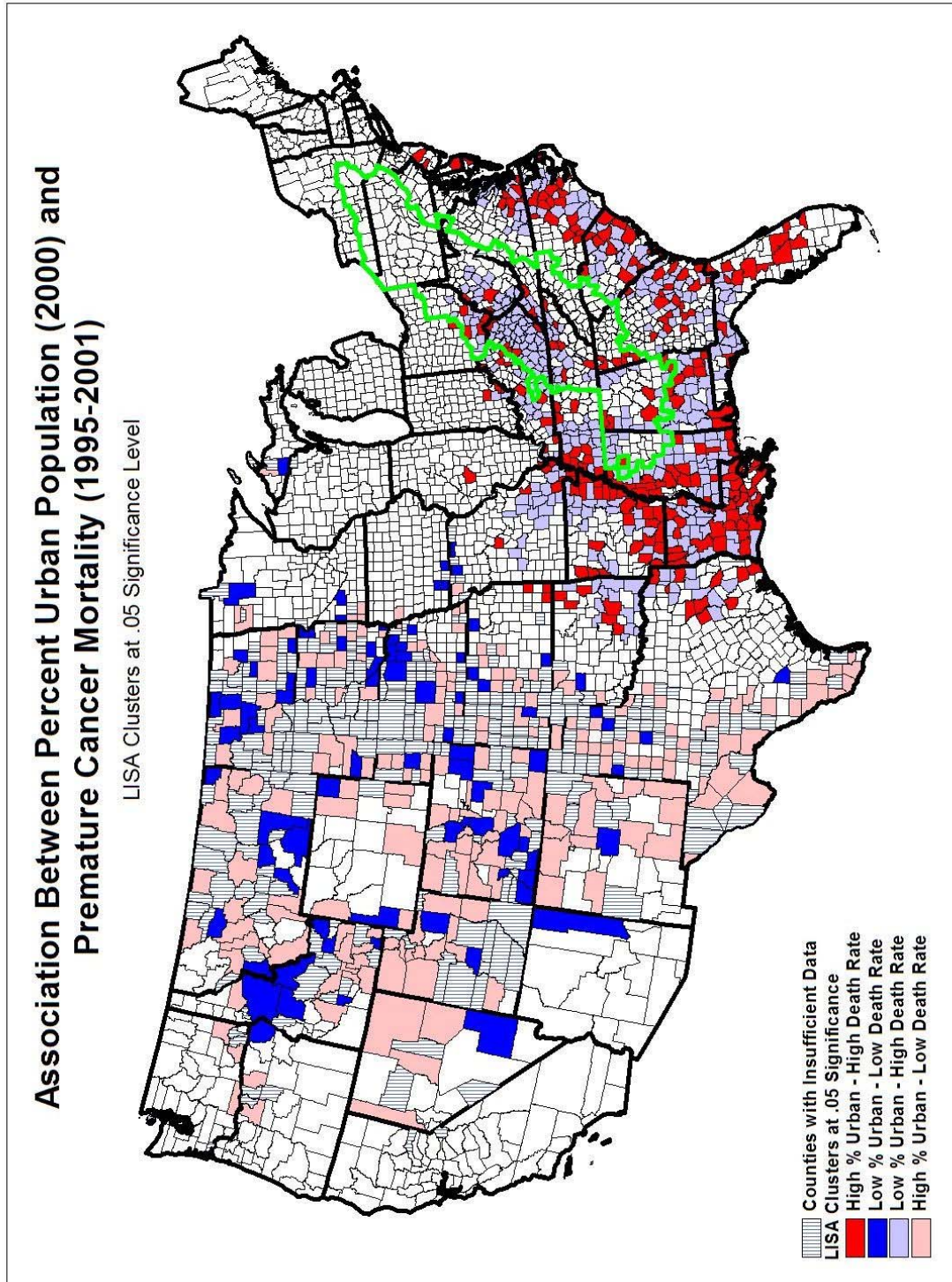


Figure 21. National Associations between Premature Cancer Mortality and Median Family Income.

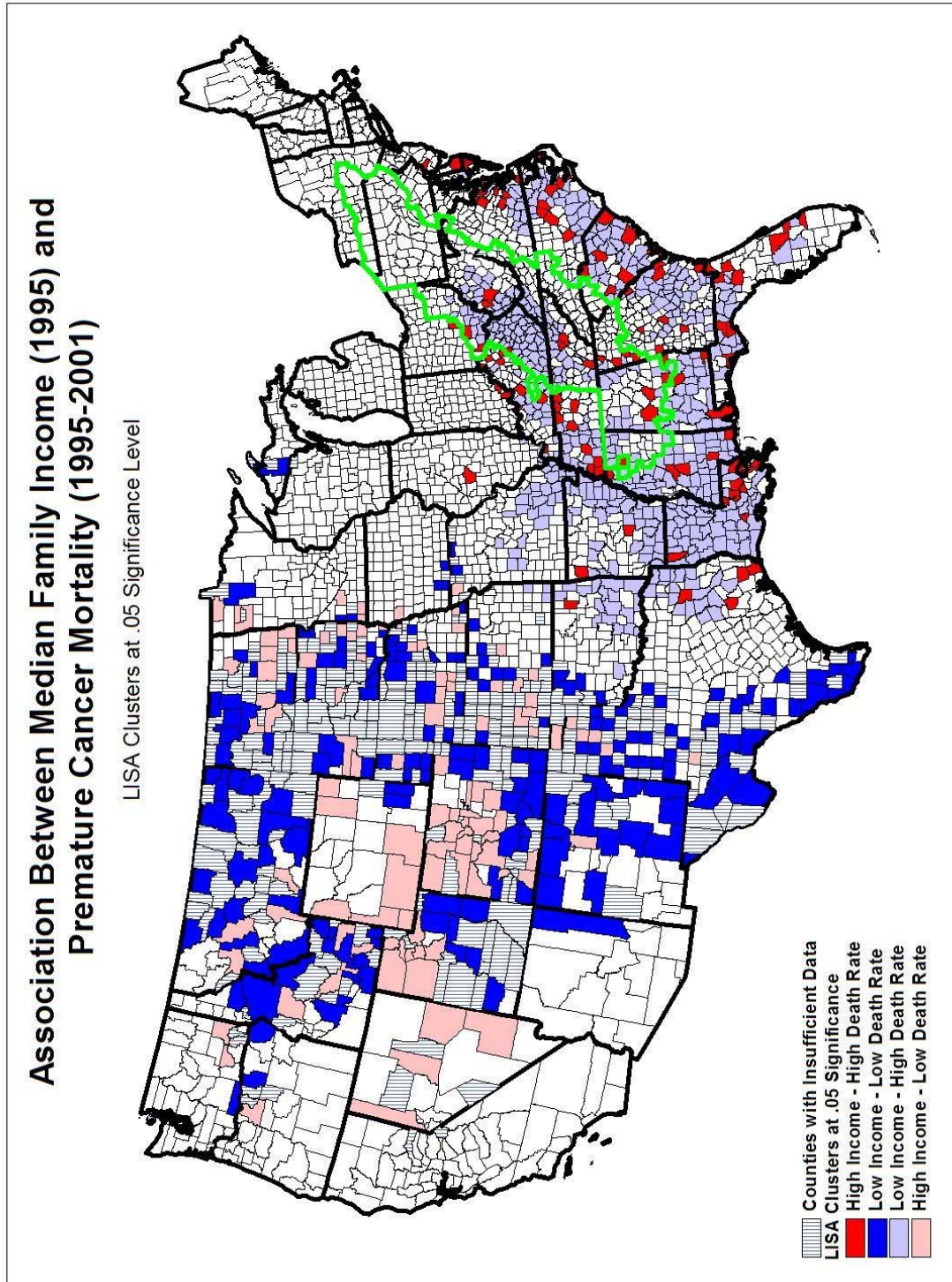


Figure 22. National Associations between Premature Cancer Mortality and the Poverty Rate.

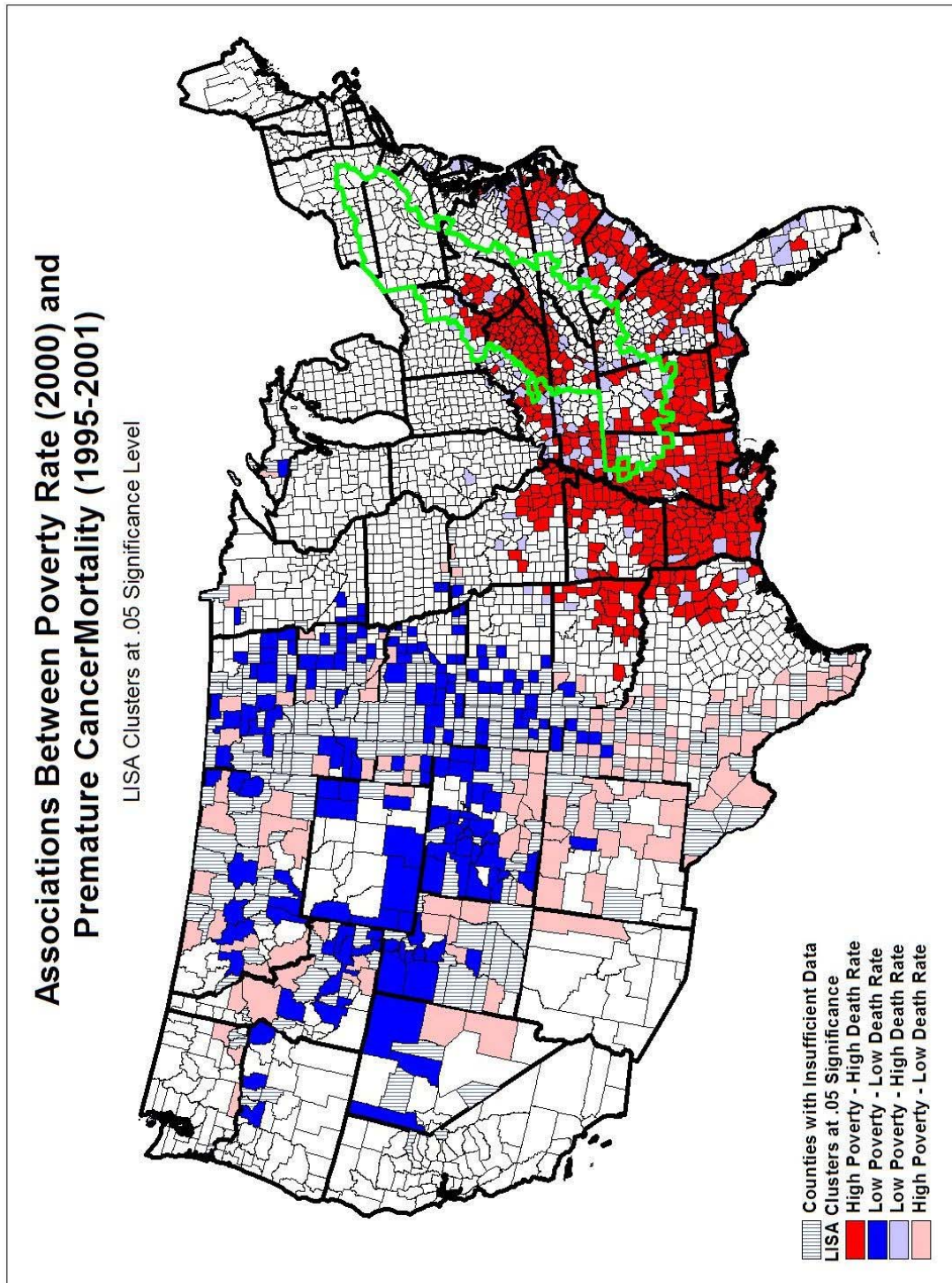


Figure 23. National Associations between Premature Cancer Mortality and the Unemployment Rate.

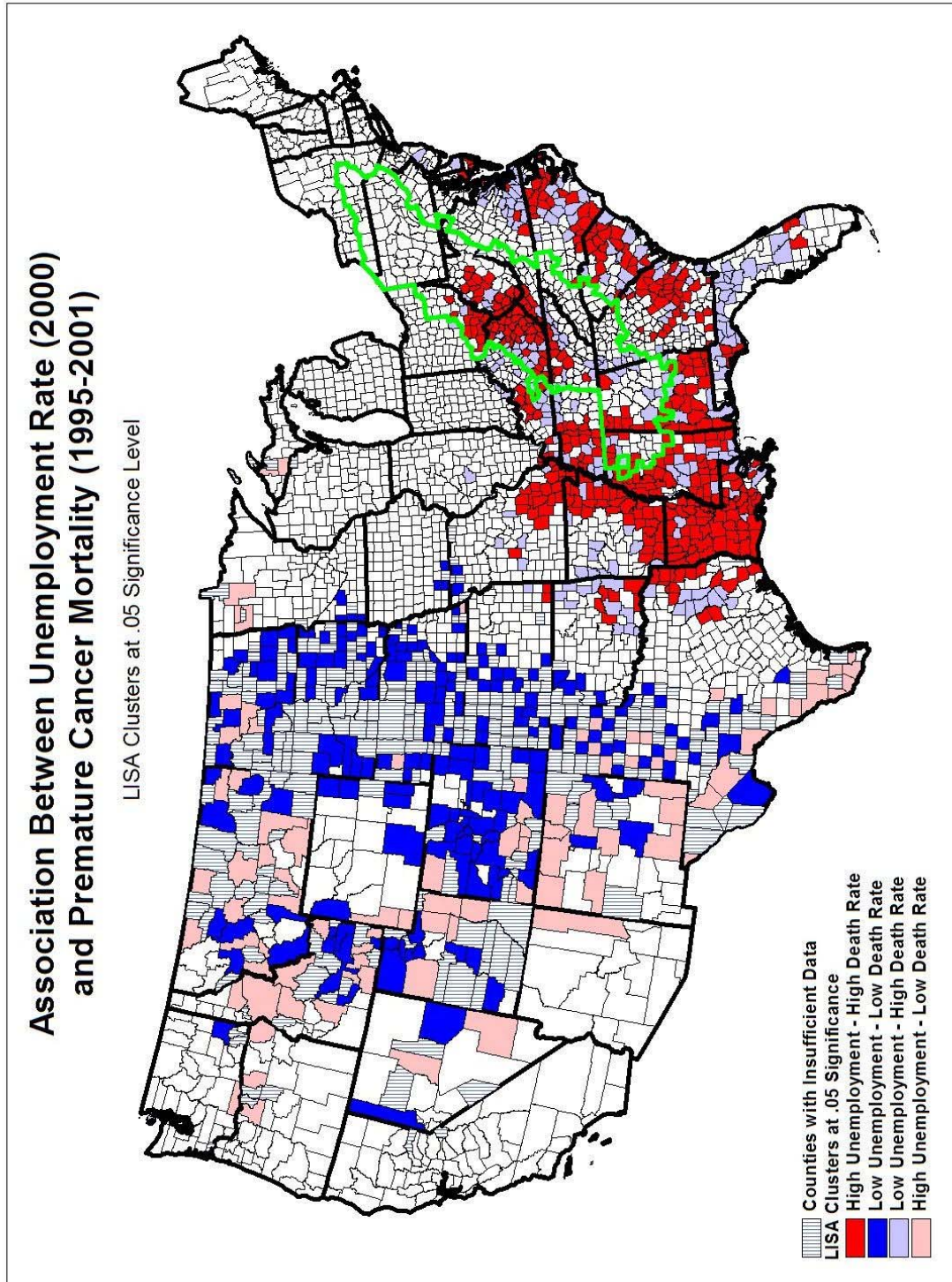


Figure 24. National Associations between Premature Cancer Mortality and the Percentage of Persons without Health Insurance.

