

### **III.B.3 Premature Cancer Mortality**

The regional pattern of premature cancer mortality is dominated by high rates in the Central part of the region among counties in Eastern Kentucky, Southern Ohio and West Virginia. Although Appalachia is predominant in the national distribution of premature cancer death rates, and is represented primarily among the 2<sup>nd</sup> through 4<sup>th</sup> quartiles, relatively low rates of mortality are still evident among the Northern-most counties.

Statistically significant associations between socioeconomic conditions and premature cancer mortality are found consistently found among Central counties in Eastern Kentucky, Southern Ohio and West Virginia, in a loose cluster along the North-central Appalachian border in West Virginia and Pennsylvania and sporadically and Southern counties (see Figures 36-40). Counties in the Central part of the region are represented fairly consistently among all five indicators of socioeconomic condition. These counties are represented by low percentages of urban population, low income levels, high poverty rates, high unemployment, and high percentages of persons without health insurance and are also consistently associated with high rates of premature cancer mortality. Among counties in the cluster along the North-Central Appalachian border, which are consistently associated with low rates of premature cancer mortality, they are generally comparable on four of the socioeconomic measures but appear to have a lower percentage of persons without health insurance.

Figure 36. Associations between Premature Cancer Mortality and Percent Urban Population in the Appalachian Region.

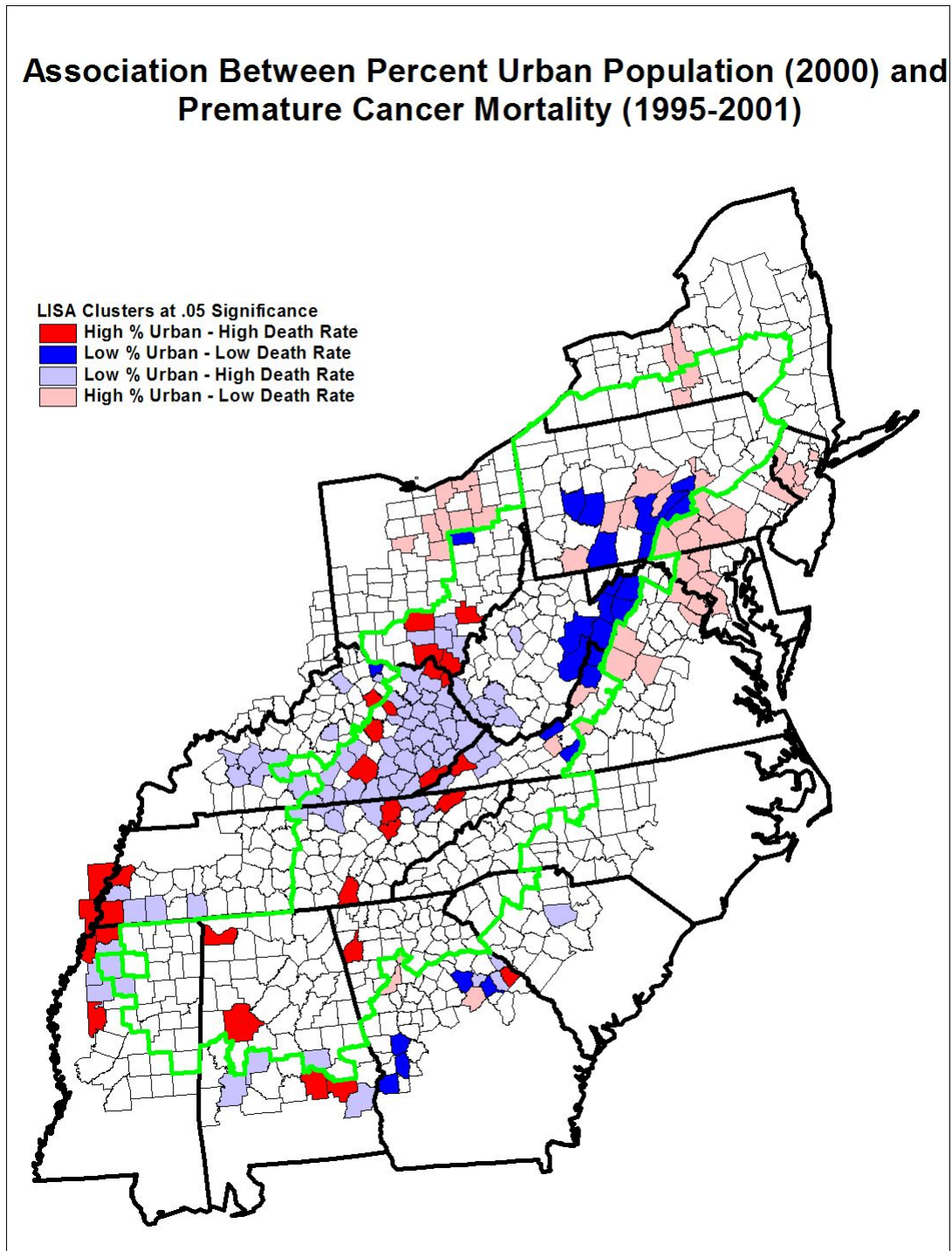


Figure 37. Associations between Premature Cancer Mortality and Median Family Income in the Appalachian Region.

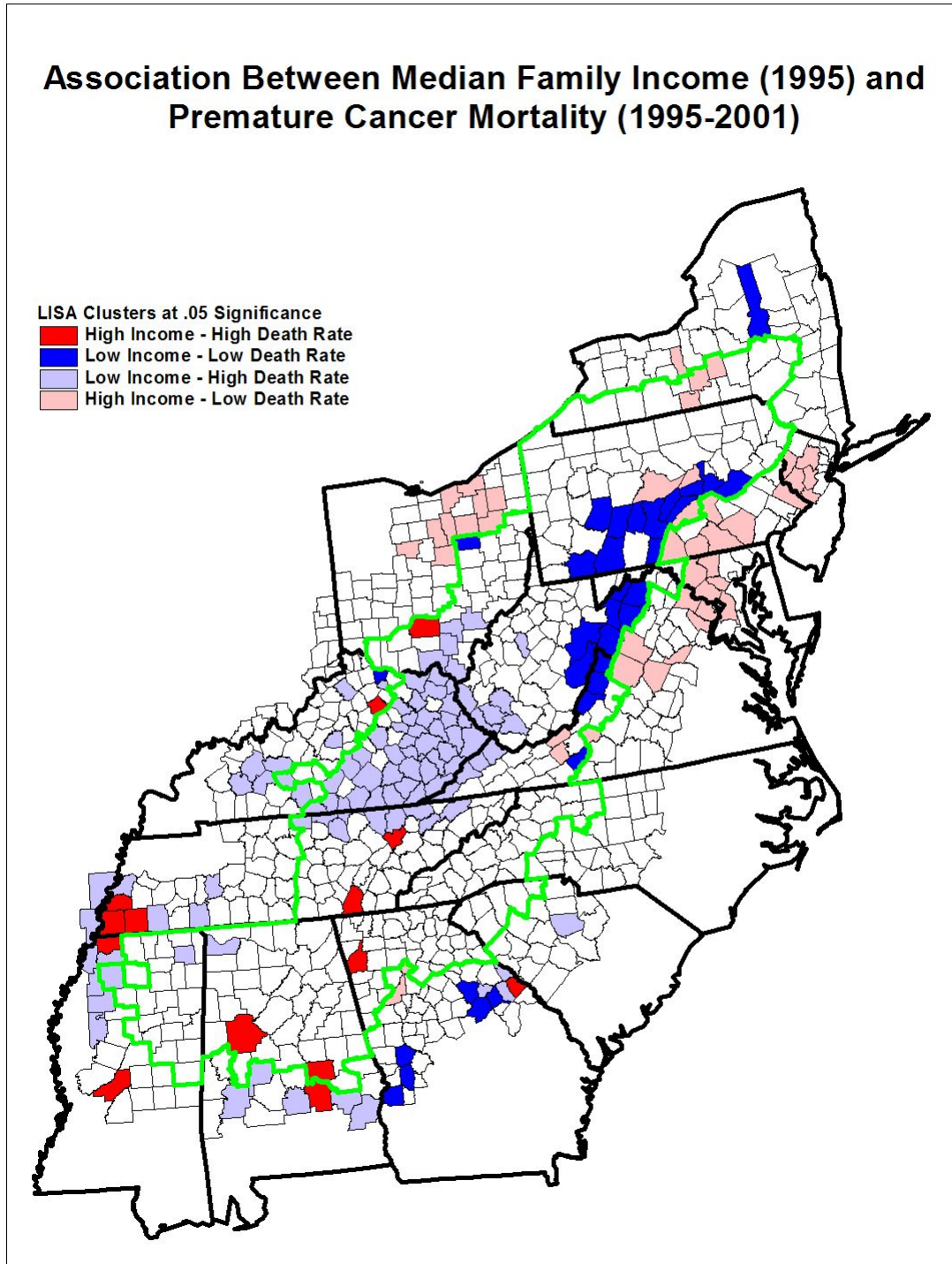


Figure 38. Associations between Premature Cancer Mortality and the Poverty Rate in the Appalachian Region.

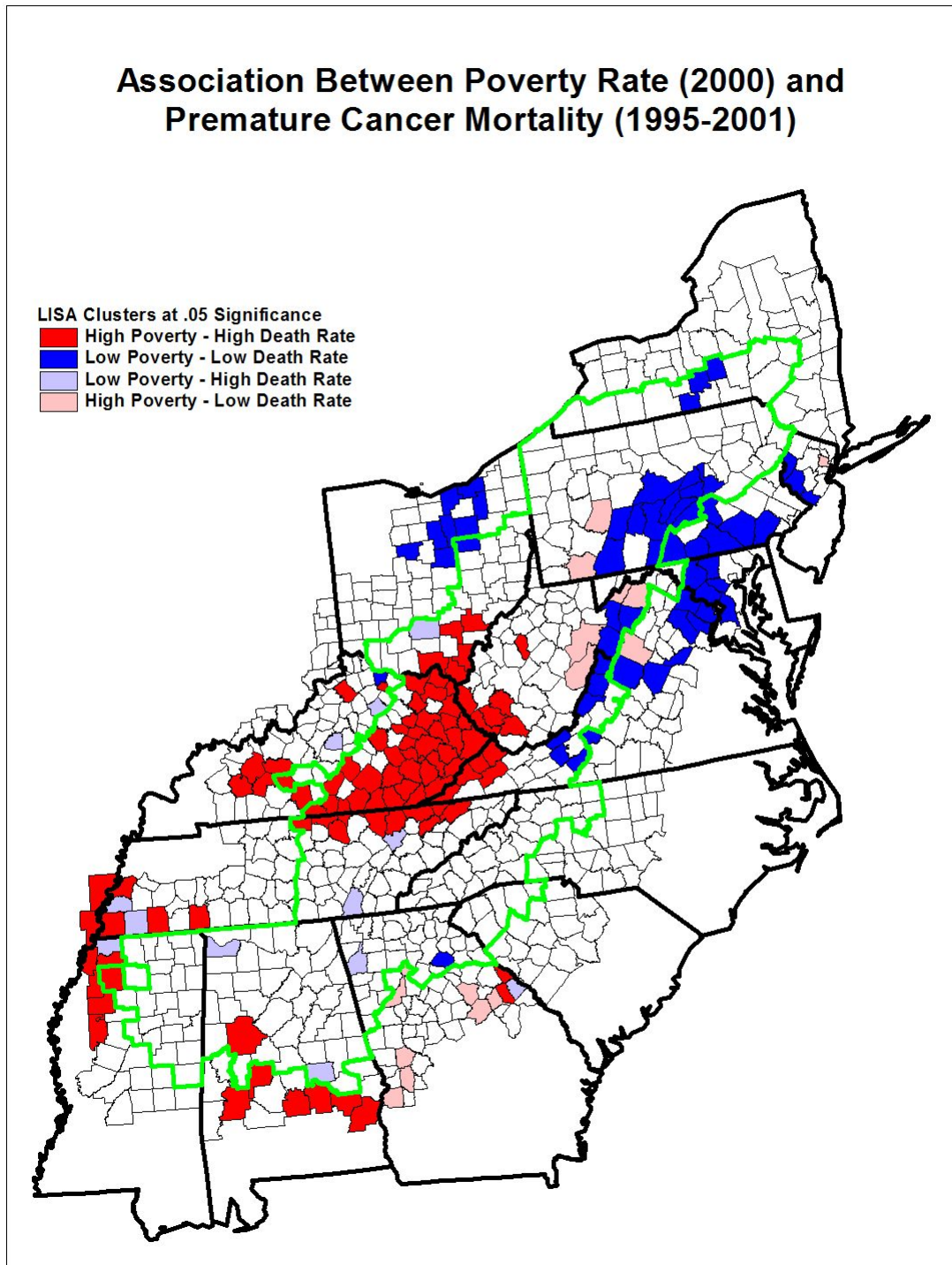




Figure 39. Associations between Premature Cancer Mortality and the Unemployment Rate in the Appalachian Region.

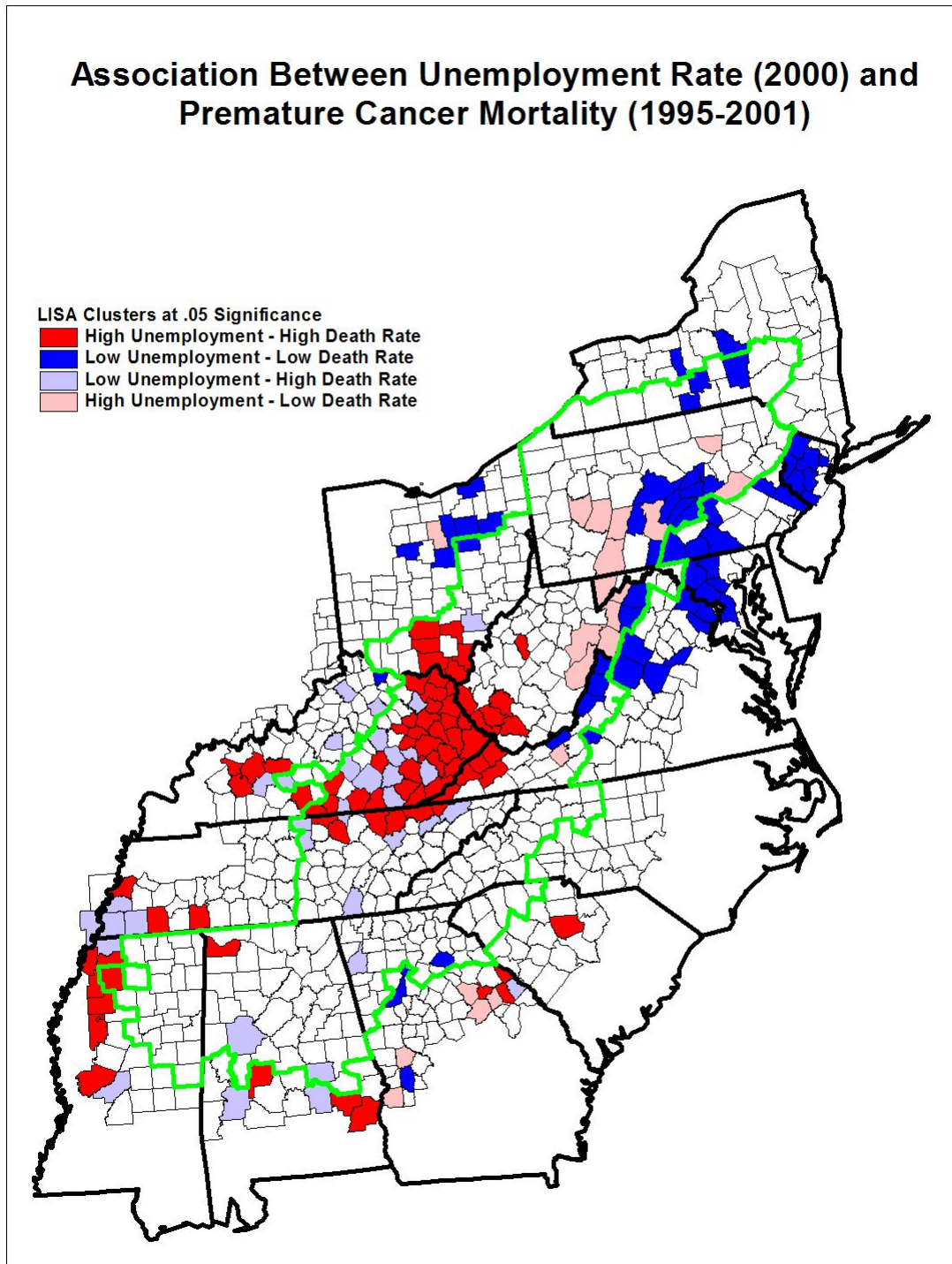


Figure 40. Associations between Premature Cancer Mortality and the Percentage of Persons without Health Insurance in the Appalachian Region.

