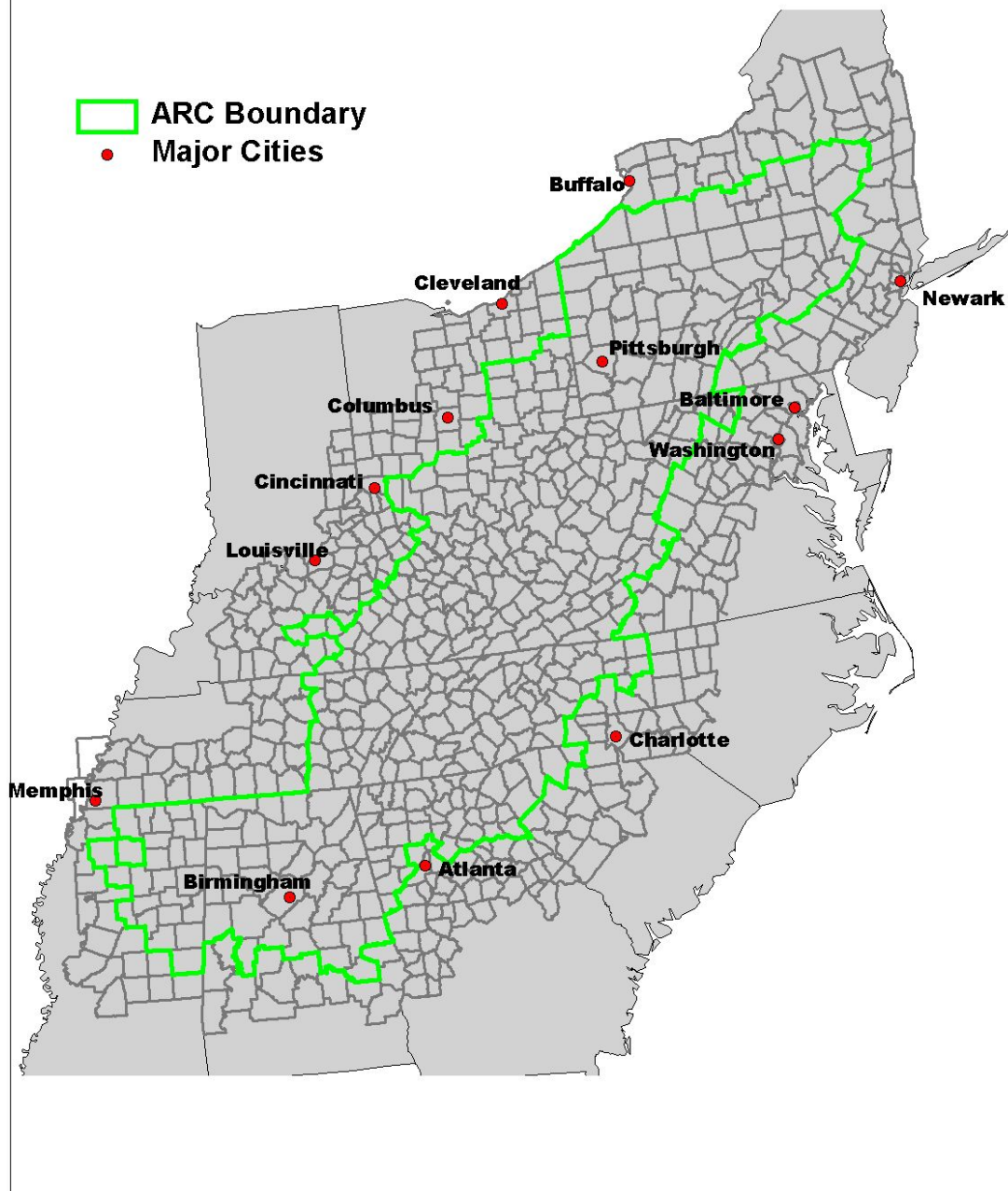
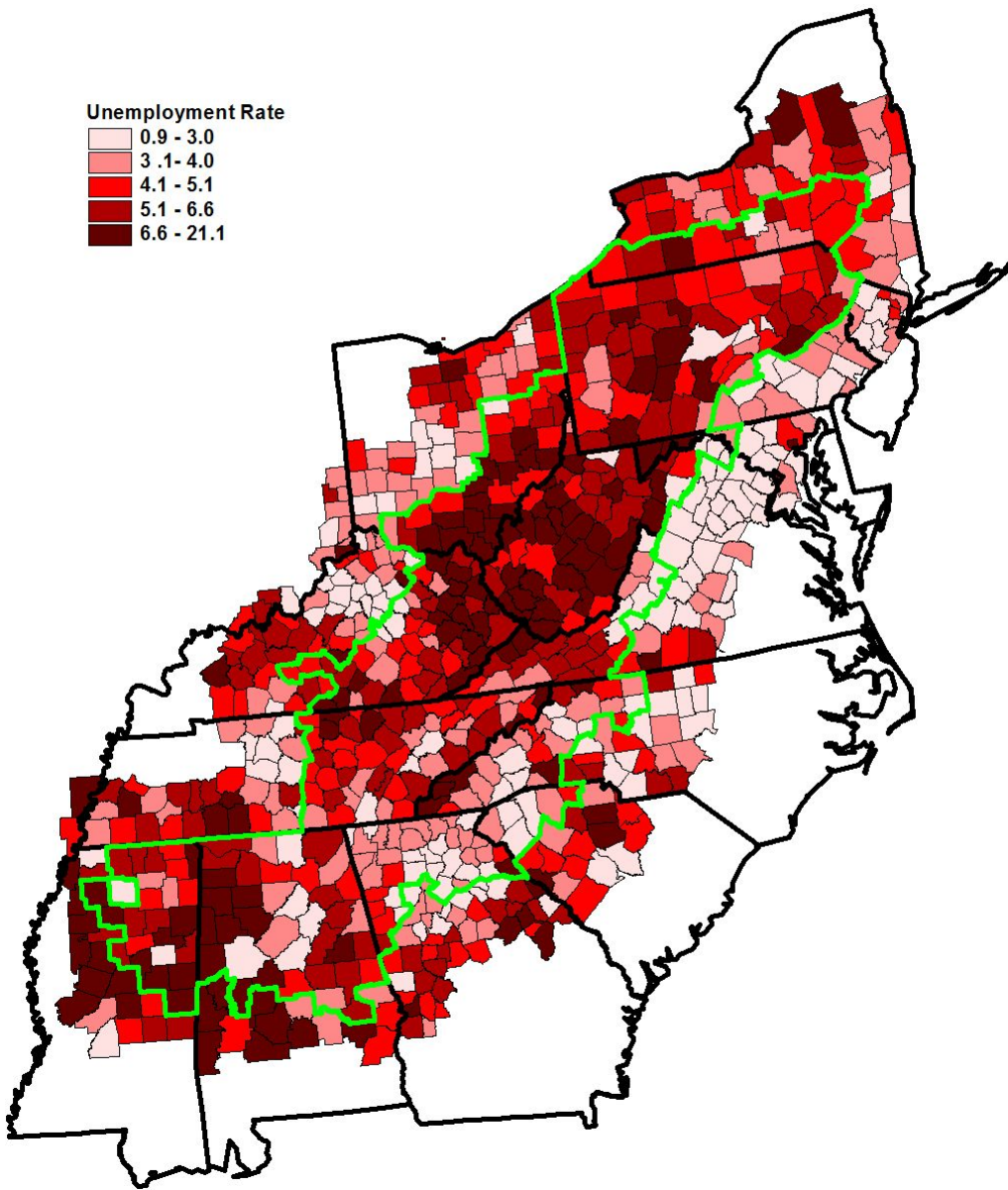
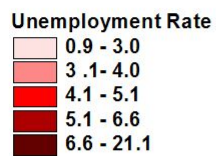


APPENDIX 1

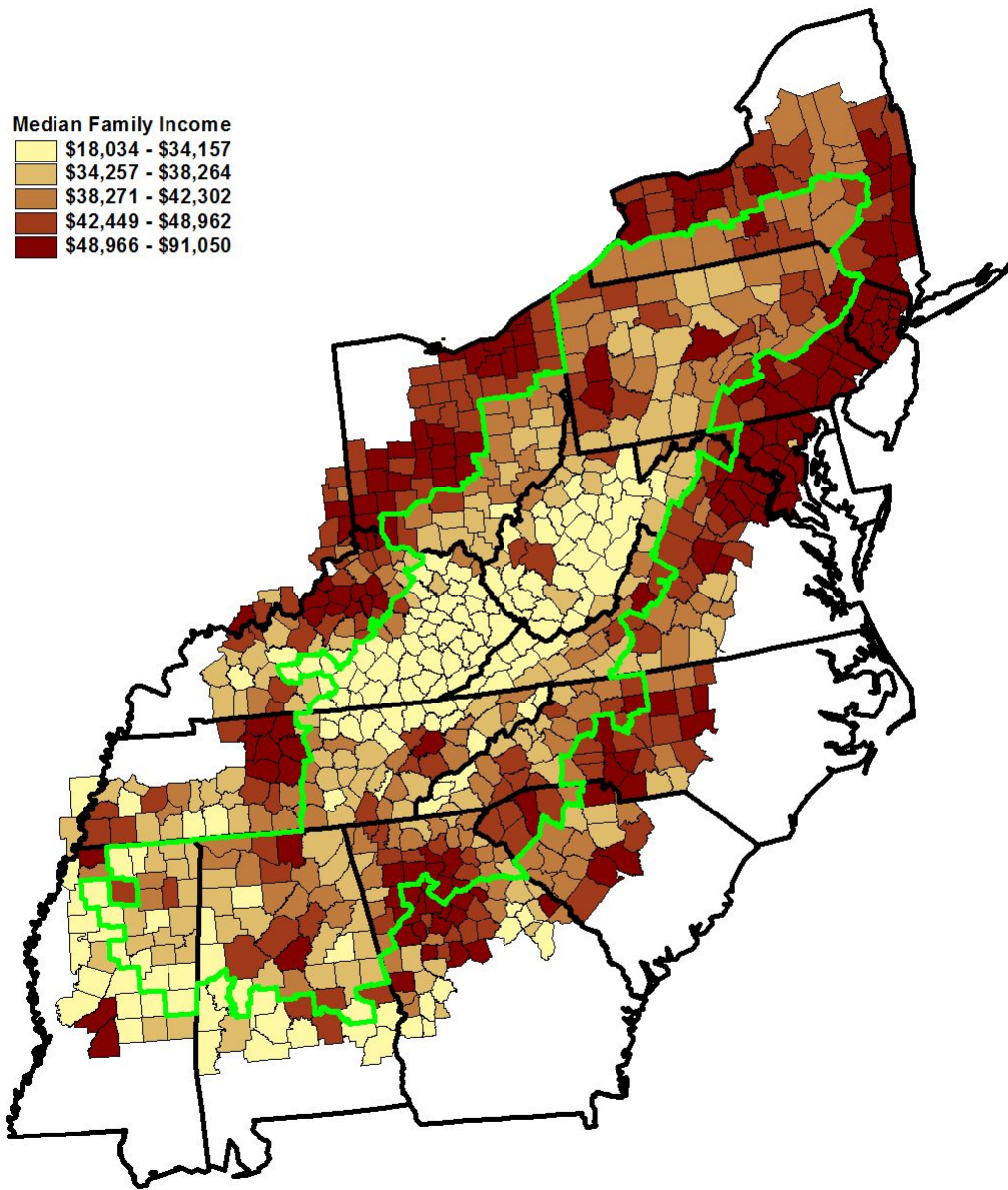
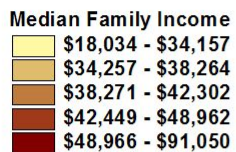
Counties within 50 Miles of A.R.C. Designated Boundary



Unemployment Rate, 2000

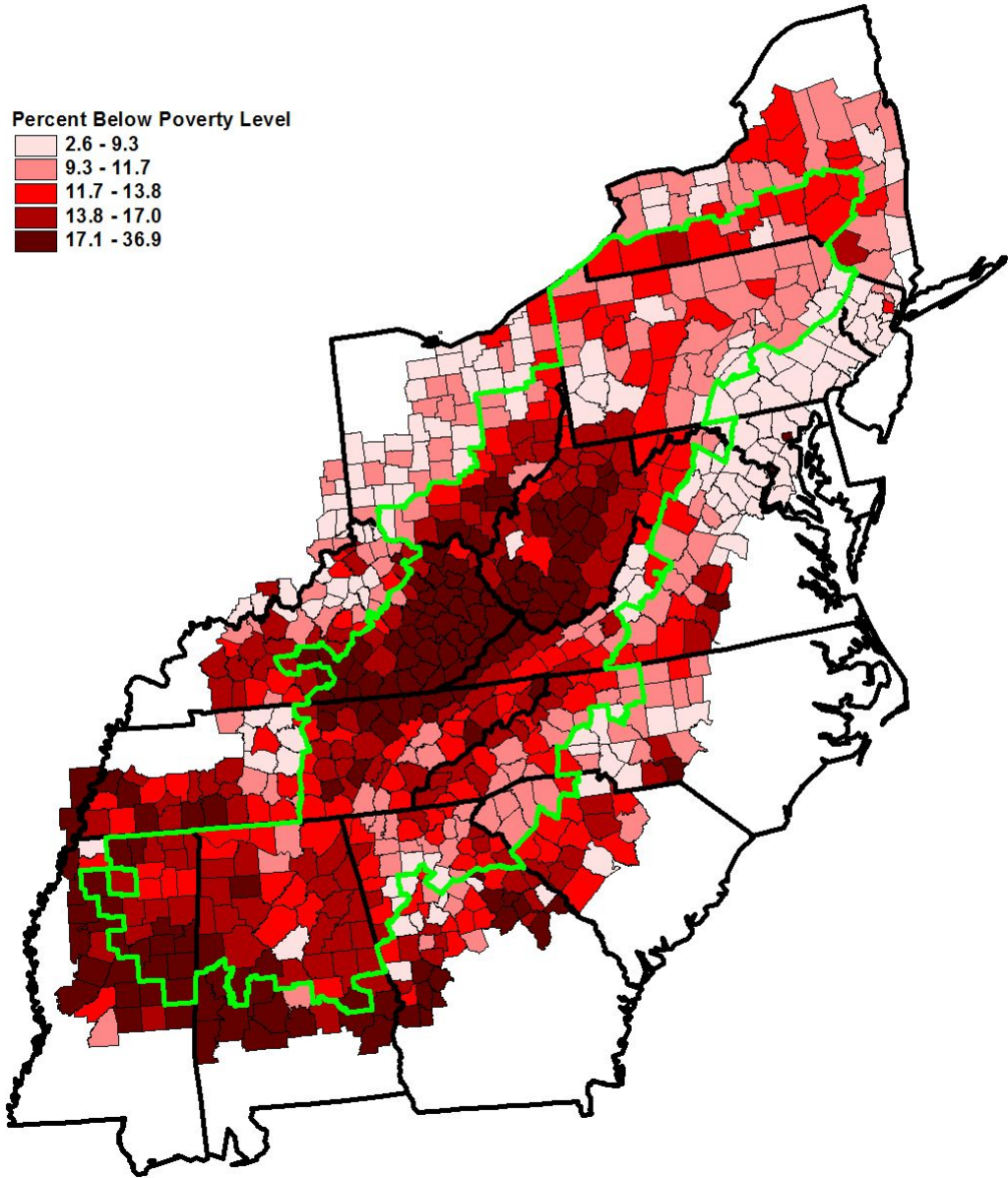
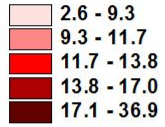


Median Family Income, 1999

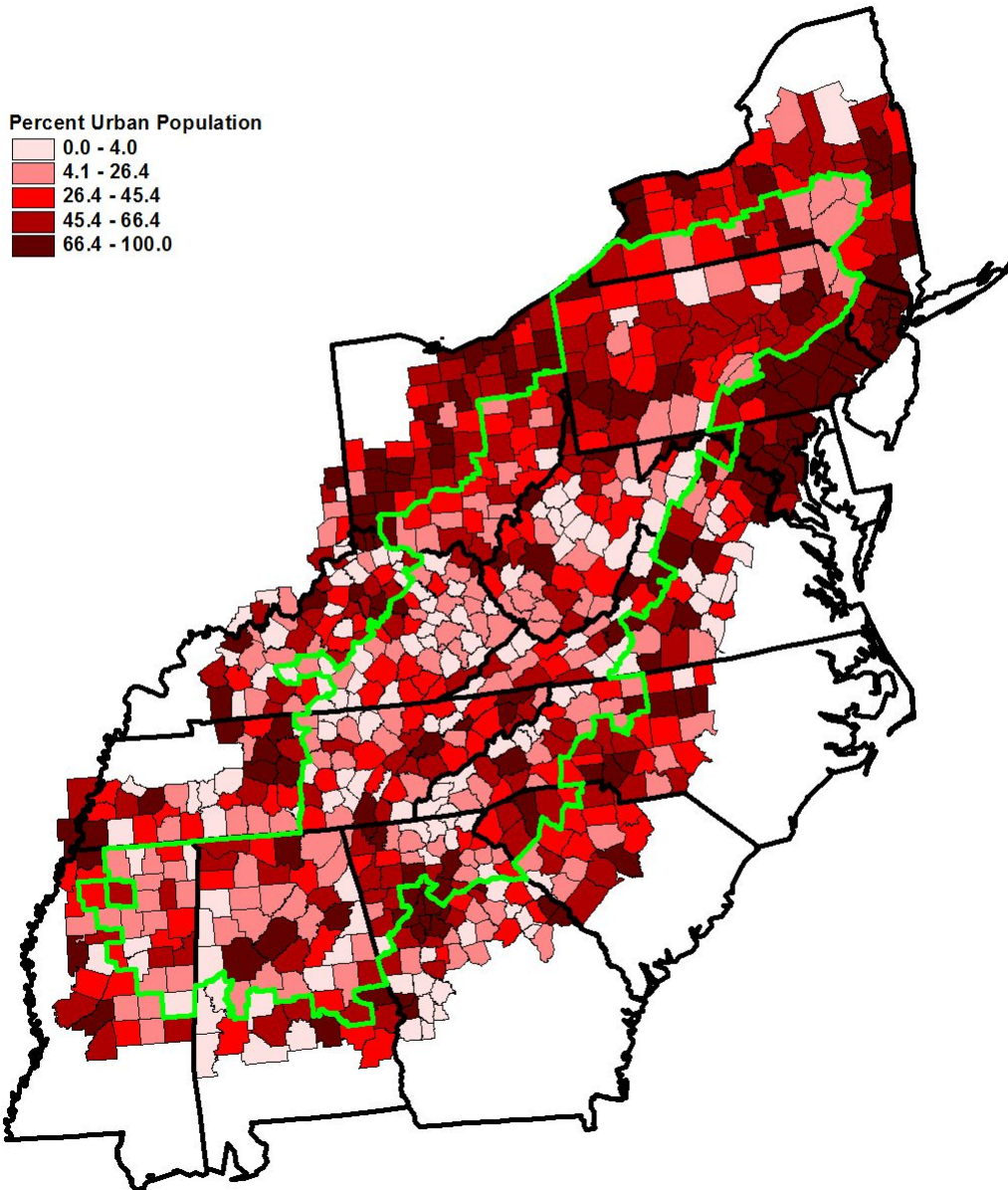


Percent Of Persons Living Below Poverty Level, 2000

Percent Below Poverty Level



Percent of Population Living in Urban Areas, 2000



Percent of Persons without Health Insurance, 2000

Percent w/o Health Insurance

