

Department of Health and Human Services

Substance Abuse and Mental Health Services Administration

**Technical Assistance Center for Mental Health Promotion
and Youth Violence Prevention
(Initial Announcement)**

Request for Applications (RFA) No. SM-08-003

Catalogue of Federal Domestic Assistance (CFDA) No.: 93.243

Key Dates:

Application Deadline	Applications are due by April 22, 2008.
Intergovernmental Review (E.O. 12372)	Applicants must comply with E.O. 12372 if their State(s) participates. Review process recommendations from the State Single Point of Contact (SPOC) are due no later than 60 days after application deadline.
Public Health System Impact Statement (PHSIS)/Single State Agency Coordination	Applicants must send the PHSIS to appropriate State and local health agencies by application deadline. Comments from Single State Agency are due no later than 60 days after application deadline.

A. Kathryn Power, M.Ed.
Director
Center for Mental Health Services
Substance Abuse and Mental Health
Services Administration

Terry L. Cline, Ph.D.
Administrator
Substance Abuse and Mental Health
Services Administration

Table of Contents

I.	FUNDING OPPORTUNITY DESCRIPTION.....	4
1.	INTRODUCTION	4
2.	EXPECTATIONS.....	5
II.	AWARD INFORMATION	8
III.	ELIGIBILITY INFORMATION	9
1.	ELIGIBLE APPLICANTS	9
2.	COST SHARING and MATCH REQUIREMENTS	10
3.	OTHER	10
IV.	APPLICATION AND SUBMISSION INFORMATION	10
1.	ADDRESS TO REQUEST APPLICATION PACKAGE	10
2.	CONTENT AND FORM OF APPLICATION SUBMISSION	10
3.	SUBMISSION DATES AND TIMES.....	12
4.	INTERGOVERNMENTAL REVIEW (E.O. 12372) REQUIREMENTS	13
5.	FUNDING LIMITATIONS/RESTRICTIONS	15
6.	OTHER SUBMISSION REQUIREMENTS	15
V.	APPLICATION REVIEW INFORMATION.....	16
1.	EVALUATION CRITERIA	16
2.	REVIEW AND SELECTION PROCESS	21
VI.	AWARD ADMINISTRATION INFORMATION.....	22
1.	AWARD NOTICES.....	22
2.	ADMINISTRATIVE AND NATIONAL POLICY REQUIREMENTS.....	22
3.	REPORTING REQUIREMENTS	23
VII.	AGENCY CONTACTS.....	24
	Appendix A – Checklist for Formatting Requirements and Screenout Criteria for SAMHSA Grant Applications	25
	Appendix B – Guidance for Electronic Submission of Applications	27
	Appendix C – Sample Logic Model	30
	Appendix D – Logic Model Resources.....	32
	Appendix E – Sample Budget and Justification	33
	Appendix F – Glossary	38
	Appendix G – Confidentiality and Participant Protection	41

Executive Summary:

The Substance Abuse and Mental Health Services Administration, Center for Mental Health Services is accepting applications for fiscal year (FY) 2008 for a Technical Assistance Center for Mental Health Promotion and Youth Violence Prevention (TA Center) grant. The purpose of this program is to support the federally funded Safe Schools/Healthy Students (SS/HS) grant program and Linking Actions for Unmet Needs in Children's Health (Project Launch) grant programs.

Funding Opportunity Title:	Technical Assistance Center for Mental Health Promotion and Youth Violence Prevention
Funding Opportunity Number:	SM-08-003
Due Date for Applications:	April 22, 2008
Anticipated Total Available Funding:	\$6.6 million
Estimated Number of Awards:	1
Estimated Award Amount:	Up to \$6.6 million
Length of Project Period:	Up to five years
Eligible Applicants:	Domestic public and private non-profit entities. [See Section III-1 of this RFA for complete eligibility information.]

I. FUNDING OPPORTUNITY DESCRIPTION

1. INTRODUCTION

The Substance Abuse and Mental Health Services Administration, Center for Mental Health Services is accepting applications for fiscal year (FY) 2008 for a Technical Assistance Center for Mental Health Promotion and Youth Violence Prevention (TA Center) grant. The purpose of this program is to support the federally funded Safe Schools/Healthy Students (SS/HS) grant program and Linking Actions for Unmet Needs in Children's Health (Project Launch) grant programs.

The Safe Schools/Healthy Students grant program provides funds to local educational agencies to plan, implement, evaluate and sustain a comprehensive plan of programs, activities, services and curricula to foster resilience, promote mental health, prevent substance abuse, youth violence and mental and behavioral disorders. The SS/HS program is grounded in the belief that people's lives can be enhanced through effective interventions that foster well-being and resilience at the individual, family and community levels. Structurally, the SS/HS program brings together representatives from many diverse stakeholder groups seeking cooperation from an array of public health, mental health, education, law enforcement, justice and social service systems, as well as families and youth, to work towards the mutual goals of promoting safety, well being, and healthy development.

Project Launch grant program supports a vision of communities in which families participate in a seamless set of local programs, supports and services that promote healthy early childhood development, supportive family environments. The Project Launch grant program will provide funds to localities through State agencies in order to plan for and implementing a range of prevention activities that include: (1) the development of a comprehensive plan to integrate behavioral and physical health; (2) integration of early childhood systems of care to blend services and supports from health, mental health, substance abuse, education, and social services; and (3) development of community based networks for preventative and primary care that coordinates and integrates behavioral and physical health service delivery. Successful grantees must build integrated and comprehensive health/mental and behavioral health/substance use prevention and promotion programs, practices and services. Grantees must be able to demonstrate a partnership between local mental health, primary health care, substance abuse prevention, social services and early childhood/elementary educational systems. These partnerships and plans must be developed and agreed upon by local partners in keeping with existing State plans.

The TA Center will provide an array of technical assistance services that will improve the effectiveness, efficiency, and sustainability of projects in both grant programs. Annually, up to 90 SS/HS grantees and approximately 6 Project Launch grantees will require technical assistance services.

The TA Center grant is authorized under Section 520A of the Public Health Service Act, as amended. This announcement addresses Healthy People 2010 focus area 18 (Mental Health and Mental Disorders).

2. EXPECTATIONS

The TA Center will be expected to perform the following functions:

- Provide multifaceted technical assistance services across a wide variety of topics for all grantees.
- Provide centralized administration, management and coordination of TA services for all grantees.
- Provide localized site specific and cross site technical assistance in a variety of formats and media for all grantees.
- Establish processes for identifying best practices and resource development and sharing these across all grantee sites.
- Provide technical assistance that demonstrates competency with respect to all types of diversity, e.g., age, gender, culture.
- Create linkages for Project Launch grantees with State mental health directors, and State child and maternal health directors.
- Provide communications technical assistance to Project Launch grantees.

2.1 Required Activities

In close partnership with SAMHSA's Center for Mental Health Services and other Federal partners, the TA Center will conduct the following required activities:

- **Transition from the Incumbent Technical Assistance Provider:** In the event that the grantee is not the incumbent TA Center provider, develop and implement a plan to address and ensure the coordination of an orderly transition of TA services, activities, and materials.
- **Establish and Coordinate a SS/HS Technical Assistance Center Grantee Steering Council:** A Grantee Council, comprised of 8-10 individuals, will provide advice and consultation to the TA Center regarding content, leadership, management and TA service delivery. (NOTE: The proposed members should be current or former program partners, e.g., project directors, evaluators, etc., of the SS/HS program. Applicants must budget for the travel/logistics of convening the committee up to two times per year in Rockville, MD. The meeting will be held at SAMHSA headquarters, so there will be no cost associated with meeting space).
- **Provide Consultation and Site Specific Technical Assistance Services:** The TA Center will develop and provide specialized, site specific technical assistance for all grantee sites, e.g., assessments of grantee needs; development of individualized technical assistance plans; assistance with strategic planning; assistance with evaluation; expert consultant services; assistance with sustainability planning; assistance with addressing cultural competence and engagement and outreach of diverse groups, etc.
- **Provide Cross Site Technical Assistance Services:** The TA Center will develop and provide cross site technical assistance services to all grantees, e.g., peer-to-peer mentoring; telephone conference calls; on line learning forums and Web-based courses.

- **Develop and Deliver Technical Assistance Materials and Resources:** The TA Center will support all grantees by developing and providing access to needed resources for activities related to healthy youth development, youth violence prevention, substance abuse prevention and mental health promotion, e.g., a resource guide of all possible and available TA activities; “promising practices” guides; annual monographs that summarize the local evaluation findings for grantees whose grants ended during that year, etc.
- **Performance Monitoring:** The TA Center will develop internal performance monitoring systems and collaborate with an external, independent evaluator to monitor and evaluate all internal and external TA Center activities for relevance, efficiency, effectiveness and impact. This information should be used for identifying gaps in TA and for continuous improvement of the TA provided.
- **Collaborate with Other Program Partners:** The TA Center will develop and implement tracking and communications mechanisms for sharing information and feedback from and with other technical assistance contractors already working with the grant program, as well as other relevant SAMHSA-funded TA centers and grant programs.
- **Plan and Facilitate National Conferences and Regional Meetings:** Annually, the TA Center will plan, facilitate and coordinate either a national conference or up to five smaller regional conferences. (NOTE: Each national conference will be up to three days and each regional meeting will be up to two days. The TA Center should include in its budget funding for the travel/lodging/per diem costs of its staff, TA Center consultants/sub-contractors and conference or meeting speakers. Grantees will pay their own travel costs and a logistics contractor will be responsible for all other costs associated with the conference or meetings).

2.2 Data Collection and Performance Measurement

All SAMHSA grantees are required to collect and report certain data so that SAMHSA can meet its obligations under the Government Performance and Results Act (GPRA). You must document your ability to collect and report the required data in “Section D: Performance Assessment and Data” of your application. You will be required to report performance on the following data: technical assistance. Measures are currently under development. However, the measurement domains below are the areas of focus for performance measurement. Confirmation of the TA performance measures is expected in FY 2008.

1. Process Component: Includes recipient demographics, perception of structure and timing of the service received and accessibility.
2. Content Component: Includes recipient perception of clarity of the services received and relevance to their work.
3. Impact Component: Includes recipient perception of short-term (what was learned) and long-term (the implementation of what was learned) utility and value of the service received. What was useful, how and why?

Data will be entered into the Transformation Accountability (TRAC) Web system. Training and ongoing support related to data collection and reporting will be offered. Data collection instruments are under development.

Performance data will be reported to the public, the Office of Management and Budget (OMB) and Congress as part of SAMHSA's budget request.

2.3 Performance Assessment

You must assess your project, addressing the performance measures described in Section I-2.2. The assessment should be designed to help you determine whether you are achieving the goals, objectives and outcomes you intend to achieve and whether adjustments need to be made to your project. You will be required to report on your progress achieved, barriers encountered and efforts to overcome these barriers in a performance assessment report to be submitted at least annually.

In addition to assessing progress against the performance measures required for this program, your performance assessment must also consider outcome and process questions, such as the following:

Outcome Questions:

- What was the effect of intervention on participants?
- What program/contextual factors were associated with outcomes?
- What individual factors were associated with outcomes?
- How durable were the effects?

Process Questions:

- How closely did implementation match the plan?
- What types of deviation from the plan occurred?
- What led to the deviations?
- What effect did the deviations have on the planned intervention and performance assessment?
- Who provided (program staff) what services (modality, type, intensity, duration), to whom (individual characteristics), in what context (system, community), and at what cost (facilities, personnel, dollars)?

You must conduct annual project evaluations of process, outcomes, and activities, including assessing satisfaction of technical assistance services by the grantees who receive them. The evaluation should be designed to provide regular feedback to the project that can translate into informed decision-making and ongoing project improvement. You must submit data collection instruments/interview protocols in **Appendix 2, "Data Collection Instruments/Interview Protocols,"** of the application.

No more than 20% of the total grant award may be used for data collection, performance measurement, and performance assessment, e.g., activities required in Sections I-2.2 and 2.3 above.

2.4 Grantee Meetings

In addition to the Grantee SS/HS Council meeting referenced in Section I-2.1, you must plan to send a minimum of two people (including the Project Director) to four meetings in each year of the cooperative agreement to meet with the GPO, grantee GPOs, and other relevant staff to review TA procedures and plan events. You must include a detailed budget and narrative for this travel in your budget. Each meeting will be 2 days and will be held at SAMHSA headquarters.

II. AWARD INFORMATION

Funding Mechanism: Cooperative Agreement

Anticipated Total Available Funding: \$6.6 million

Estimated Number of Awards: 1

Estimated Award Amount: Up to \$6.6 million

Length of Project Period: Up to five years

Your proposed budget cannot exceed \$6.6 million in total costs (direct and indirect) in any year of the proposed project. Annual continuation awards will depend on the availability of funds, grantee progress in meeting project goals and objectives, timely submission of required data and reports, and compliance with all terms and conditions of award.

Cooperative Agreement

This award is being made as a cooperative agreement because it requires substantial post-award Federal programmatic participation in the conduct of the project. Under this cooperative agreement, the roles and responsibilities of the grantee and SAMHSA staff are:

Role of Federal Staff:

- Consult with the TA Center leadership and management team on all phases of the project development and implementation to ensure accomplishment of the goals;
- Approve key staff (e.g., project director, supervisors, Steering Committee Members) responsible for the management, leadership and oversight of the TA Center;
- Review critical project activities for conformity to the mission of the SS/HS grant program;
- Provide guidance on project design and components, as needed;

- Participate in policy and steering groups or related work groups;
- Approve data collection plans;
- Submit required clearance packages to the U.S. Office of Management and Budget (OMB) using information and materials provided by the grantee and evaluator;
- Recommend outside consultants for training, site specific evaluation, and data collection, if needed;
- Facilitate collaboration, as needed; and
- Assume overall responsibility for monitoring the conduct and progress of the TA Center program, review semi-annual reports, conduct site visits and make recommendations regarding continuation funding.

Role of the Grantee:

- Comply with all terms and conditions of the award and satisfactorily perform activities to achieve the program goals;
- Consult with and accept guidance and respond to requests for information from the Government Project Officer, the Grants Management Specialist and other relevant SAMHSA and Federal staff;
- Agree to provide SAMHSA with all required data;
- Support and participate in TA Center meetings;
- Produce required SAMHSA reports;
- Keep Federal program staff informed of emerging issues, developments and problems;
- Respond to requests for information from SAMHSA and other Federal partners.

III. ELIGIBILITY INFORMATION

1. ELIGIBLE APPLICANTS

Eligible applicants are domestic public and private nonprofit entities. For example, State and local governments, federally recognized American Indian/Alaska Native tribes and tribal organizations, urban Indian organizations, public or private universities and colleges and community- and faith-based organizations may apply. Partnerships of multiple centers, and programs and/or community service providers may apply as a single center. The statutory authority for this program prohibits grants to for-profit agencies.

2. COST SHARING and MATCH REQUIREMENTS

Cost sharing/match is not required in this program.

3. OTHER

You must comply with the following requirements, or your application will be screened out and will not be reviewed: use of the PHS 5161-1 application form; application submission requirements in Section IV-3 of this document; and formatting requirements provided in Appendix A of this document.

IV. APPLICATION AND SUBMISSION INFORMATION

1. ADDRESS TO REQUEST APPLICATION PACKAGE

You may request a complete application kit from the SAMHSA Information Line at 1-877-SAMHSA7 [TDD: 1-800-487-4889].

You also may download the required documents from the SAMHSA Web site at www.samhsa.gov/grants/apply.aspx

Additional materials available on this Web site include:

- a grant writing technical assistance manual for potential applicants;
- standard terms and conditions for SAMHSA grants;
- guidelines and policies that relate to SAMHSA grants (e.g., guidelines on cultural competence, consumer and family participation, and evaluation); and
- list of certifications and assurances referenced in item 21 of the SF 424 v2.

2. CONTENT AND FORM OF APPLICATION SUBMISSION

2.1 Application Kit

SAMHSA application kits include the following documents:

- PHS 5161-1 (revised July 2000) – Includes the face page (SF 424 v2), budget forms, assurances, certification, and checklist. You must use the PHS 5161-1. **Applications that are not submitted on the required application form will be screened out and will not be reviewed.**
- Request for Applications (RFA) – Provides a description of the program, specific information about the availability of funds, and instructions for completing the grant application. This document is the RFA. The RFA will be available on the SAMHSA Web site (www.samhsa.gov/grants/index.aspx) and a synopsis of the RFA is available on the Federal grants Web site (www.Grants.gov).

You must use all of the above documents in completing your application.

2.2 Required Application Components

Applications must include the required ten application components (Face Page, Abstract, Table of Contents, Budget Form, Project Narrative and Supporting Documentation, Appendices, Assurances, Certifications, Disclosure of Lobbying Activities and Checklist).

- ❑ **Face Page** – SF 424 v2 is the Face Page. This form is part of the PHS 5161-1. [Note: Applicants must provide a Dun and Bradstreet (DUNS) number to apply for a grant or cooperative agreement from the Federal Government. SAMHSA applicants are required to provide their DUNS number on the face page of the application. Obtaining a DUNS number is easy and there is no charge. To obtain a DUNS number, access the Dun and Bradstreet Web site at www.dunandbradstreet.com or call 1-866-705-5711. To expedite the process, let Dun and Bradstreet know that you are a public/private nonprofit organization getting ready to submit a Federal grant application.]
- ❑ **Abstract** – Your total abstract should not be longer than 35 lines. It should include the project name, target population, proposed catchment area, proposed strategies/methods, project goals and measurable objectives to achieve infrastructure development and capacity expansion. In the first five lines or less of your abstract, write a summary of your project that can be used, if your project is funded, in publications, reporting to Congress or press releases.
- ❑ **Table of Contents** – Include page numbers for each of the major sections of your application and for each appendix.
- ❑ **Budget Form** – Use SF 424A, which is part of the 5161-1. Fill out Sections B, C, and E of the SF 424A. A sample budget and justification is included in Appendix E of this document.
- ❑ **Project Narrative and Supporting Documentation** – The Project Narrative describes your project. It consists of Sections A through D. Sections A-D together may not be longer than 30 pages. (Remember that if your Project Narrative starts on page 5 and ends on page 35, it is 31 pages long, not 30 pages.) More detailed instructions for completing each section of the Project Narrative are provided in “Section V—Application Review Information” of this document.

The Supporting Documentation provides additional information necessary for the review of your application. This supporting documentation should be provided immediately following your Project Narrative in Sections E through G. There are no page limits for these sections, except for Section G, Biographical Sketches/Job Descriptions. Additional instructions for completing these sections are included in Section V under “Supporting Documentation.” Supporting documentation should be submitted in black and white (no color).

- ❑ **Appendices 1 through 4** – Use only the appendices listed below. If your application includes any appendices not required in this document, they will be disregarded. Do not use more than a total of 30 pages for Appendices 1, 3 and 4 combined. There are no page limitations for Appendix 2. Do not use appendices to extend or replace any of the sections of the Project Narrative. Reviewers will not consider them if you do.
 - *Appendix 1:* Letters of Support
 - *Appendix 2:* Data Collection Instruments/Interview Protocols
 - *Appendix 3:* Sample Consent Forms
 - *Appendix 4:* Letter to the SSA (if applicable; see Section IV-4 of this document)

- ❑ **Assurances** – Non-Construction Programs. You must read the list of assurances provided on the SAMHSA Web site or in the application kit before signing the face page (SF 424 v2) of the application. You are also required to complete the Assurance of Compliance with SAMHSA Charitable Choice Statutes and Regulations Form SMA 170. This form will be posted on SAMHSA’s Web site with the RFA and provided in the application kits.

- ❑ **Certifications** - You must read the list of certifications provided on the SAMHSA Web site or in the application kit before signing the face page (SF 424 v2) of the application.

- ❑ **Disclosure of Lobbying Activities** – You must submit Standard Form LLL found in the PHS 5161-1. Federal law prohibits the use of appropriated funds for publicity or propaganda purposes or for the preparation, distribution or use of the information designed to support or defeat legislation pending before the Congress or State legislatures. This includes “grass roots” lobbying, which consists of appeals to members of the public suggesting that they contact their elected representatives to indicate their support for or opposition to pending legislation or to urge those representatives to vote in a particular way. If no lobbying is to be disclosed, mark N/A on the form.

- ❑ **Checklist** – Use the Checklist found in the PHS 5161-1. The Checklist ensures that you have obtained the proper signatures, assurances and certifications. If you are submitting a paper application, the Checklist should be the last page.

2.3 Application Formatting Requirements

Please refer to Appendix A, *Checklist for Formatting Requirements and Screenout Criteria for SAMHSA Grant Applications*, for SAMHSA’s basic application formatting requirements. Applications that do not comply with these requirements will be screened out and will not be reviewed.

3. SUBMISSION DATES AND TIMES

Applications are due by close of business on **April 22, 2008**. Hard copy applications are due by 5:00 PM (EST). Electronic applications are due by 11:59 PM (EST). **Hand carried**

applications will not be accepted. Applications may be shipped using only DHL, Federal Express (FedEx), United Parcel Service (UPS), or the United States Postal Service (USPS).

You will be notified by postal mail that your application has been received.

Your application must be received by the application deadline or it will not be considered for review. Please remember that mail sent to Federal facilities undergoes a security screening prior to delivery. You are responsible for ensuring that you submit your application so that it will arrive by the application due date and time.

If an application is mailed to a location or office (including room number) that is not designated for receipt of the application and, as a result, the designated office does not receive your application by the deadline, your application will be considered late and ineligible for review.

SAMHSA will not accept or consider any applications sent by facsimile.

SAMHSA accepts electronic submission of applications through www.Grants.gov. Please refer to Appendix B for “Guidance for Electronic Submission of Applications.”

4. INTERGOVERNMENTAL REVIEW (E.O. 12372) REQUIREMENTS

This grant program is covered under Executive Order (EO) 12372, as implemented through Department of Health and Human Services (DHHS) regulation at 45 CFR Part 100. Under this Order, States may design their own processes for reviewing and commenting on proposed Federal assistance under covered programs. Certain jurisdictions have elected to participate in the EO process and have established State Single Points of Contact (SPOCs). A current listing of SPOCs is included in the application kit and can be downloaded from the Office of Management and Budget (OMB) Web site at www.whitehouse.gov/omb/grants/spoc.html.

- Check the list to determine whether your State participates in this program. You **do not** need to do this if you are an American Indian/Alaska Native tribe or tribal organization.
- If your State participates, contact your SPOC as early as possible to alert him/her to the prospective application(s) and to receive any necessary instructions on the State’s review process.
- For proposed projects serving more than one State, you are advised to contact the SPOC of each affiliated State.
- The SPOC should send any State review process recommendations to the following address within 60 days of the application deadline. **For United States Postal Service:** Crystal Saunders, Director of Grant Review, Office of Program Services, Substance Abuse and Mental Health Services Administration, Room 3-1044, 1 Choke Cherry Road, Rockville, MD **20857**. ATTN: SPOC – Funding Announcement No. **SM-08-003**. Change the zip code to **20850** if you are using another delivery service.

In addition, if you are a community-based, non-governmental service provider and you are not transmitting your application through the State, you must submit a Public Health System Impact Statement (PHSIS)¹ to the head(s) of appropriate State or local health agencies in the area(s) to be affected no later than the application deadline. The PHSIS is intended to keep State and local health officials informed of proposed health services grant applications submitted by community-based, non-governmental organizations within their jurisdictions. If you are a State or local government or American Indian/Alaska Native tribe or tribal organization, you are not subject to these requirements.

The PHSIS consists of the following information:

- a copy of the face page of the application (SF 424 v2); and
- a summary of the project, no longer than one page in length, that provides: 1) a description of the population to be served, 2) a summary of the proposed infrastructure development, and 3) a description of the coordination planned with appropriate State or local health agencies.

For SAMHSA grants, the appropriate State agencies are the Single State Agencies (SSAs) for substance abuse and mental health. A listing of the SSAs can be found on SAMHSA's Web site at www.samhsa.gov. If the proposed project falls within the jurisdiction of more than one State, you should notify all representative SSAs.

If applicable, you must include a copy of a letter transmitting the PHSIS to the SSA in **Appendix 4, "Letter to the SSA."** The letter must notify the State that, if it wishes to comment on the proposal, its comments should be sent not later than 60 days after the application deadline to the following address. **For United States Postal Service:** Crystal Saunders, Director of Grant Review, Office of Program Services, Substance Abuse and Mental Health Services Administration, Room 3-1044, 1 Choke Cherry Road, Rockville, MD **20857**. ATTN: SSA – Funding Announcement No. **SM-08-003**. Change the zip code to **20850** if you are using another delivery service.

In addition:

- Applicants may request that the SSA send them a copy of any State comments.
- The applicant must notify the SSA within 30 days of receipt of an award.

¹ Approved by OMB under control no. 0920-0428; Public reporting burden for the Public Health System Reporting Requirement is estimated to average 10 minutes per response, including the time for copying the face page of SF 424 v2 and the abstract and preparing the letter for mailing. An agency may not conduct or sponsor, and a person is not required to respond to, a collection of information unless it displays a currently valid OMB control number. The OMB control number for this project is 0920-0428. Send comments regarding this burden to CDC Clearance Officer, 1600 Clifton Road, MS D-24, Atlanta, GA 30333, ATTN: PRA (0920-0428).

5. FUNDING LIMITATIONS/RESTRICTIONS

Cost principles describing allowable and unallowable expenditures for Federal grantees, including SAMHSA grantees, are provided in the following documents, which are available at www.samhsa.gov/grants/management.aspx:

- Institutions of Higher Education: OMB Circular A-21.
- State and Local Governments and Federally Recognized Indian Tribal Governments: OMB Circular A-87.
- Nonprofit Organizations: OMB Circular A-122.
- Hospitals: 45 CFR Part 74, Appendix E.

In addition, SAMHSA's TA Center grant recipient must comply with the following funding restrictions:

- Grant funds must be used for purposes supported by the program.
- No more than 20% of the grant award may be used for data collection and performance assessment expenses.
- Grant funds may not be used to pay for the purchase or construction of any building or structure to house any part of the grant project. (Applicants may request up to \$75,000 for renovations and alterations of existing facilities, if necessary and appropriate to the project.)

SAMHSA will not accept a "research" indirect cost rate. The grantee must use the "other sponsored program rate" or the lowest rate available.

6. OTHER SUBMISSION REQUIREMENTS

You may submit your application in either electronic or paper format.

Submission of Electronic Applications

SAMHSA accepts electronic submission of applications through www.Grants.gov. Electronic submission is voluntary. No review points will be added or deducted, regardless of whether you use the electronic or paper format.

To submit an application electronically, you must use the www.Grants.gov apply site. You will be able to download a copy of the application package from www.Grants.gov, complete it off-line, and then upload and submit the application via the Grants.gov site. E-mail submissions will not be accepted.

Please refer to Appendix B for detailed instructions on submitting your application electronically.

Submission of Paper Applications

You must submit an original application and 2 copies (including appendices). The original and copies must not be bound. Do not use staples, paper clips, or fasteners. Nothing should be attached, stapled, folded or pasted.

Send applications to the address below:

For United States Postal Service:

Crystal Saunders, Director of Grant Review
Office of Program Services
Substance Abuse and Mental Health Services Administration
Room 3-1044
1 Choke Cherry Road
Rockville, MD **20857**

Change the zip code to **20850** if you are using another delivery service.

Do not send applications to other agency contacts, as this could delay receipt. Be sure to include “YVP TA Center – **SM-08-003**” in item number 12 on the face page (SF 424 v2) of any paper applications. If you require a phone number for delivery, you may use (240) 276-1199.

Hand carried applications will not be accepted. Applications may be shipped using only DHL, Federal Express (FedEx), United Parcel Service (UPS), or the United States Postal Service (USPS).

SAMHSA will not accept or consider any applications sent by facsimile.

V. APPLICATION REVIEW INFORMATION

1. EVALUATION CRITERIA

The Project Narrative describes what you intend to do with your project and includes the Evaluation Criteria in Sections A-D below. Your application will be reviewed and scored according to the quality of your response to the requirements in Sections A-D.

- In developing the Project Narrative section of your application, use these instructions which have been tailored to this program. **These are to be used instead of the “Program Narrative” instructions found in the PHS 5161-1.**
- The Project Narrative (Sections A-D) together may be no longer than 30 pages.
- You must use the four sections/headings listed below in developing your Project Narrative. Be sure to place the required information in the correct section, **or it will not**

be considered. Your application will be scored according to how well you address the requirements for each section of the Project Narrative.

- Reviewers will be looking for evidence of cultural competence in each section of the Project Narrative, and will consider how well you address the cultural competence aspects of the evaluation criteria when scoring your application. SAMHSA’s guidelines for cultural competence can be found on the SAMHSA Web site at www.samhsa.gov. Click on “Grants/Applying for a New SAMHSA Grant/Guidelines for Assessing Cultural Competence.”
- The Supporting Documentation you provide in Sections E-H and Appendices 1-4 will be considered by reviewers in assessing your response, along with the material in the Project Narrative.
- The number of points after each heading is the maximum number of points a review committee may assign to that section of your Project Narrative. Although scoring weights are not assigned to individual bullets, applicants are encouraged to respond to each bulleted statement.

Section A: Statement of Need (10 points)

- Describe the major issues involved in delivery of technical assistance services on an ongoing basis while also considering each grantee’s current stage of grant implementation.
- Describe your understanding of grantee needs and issues in the following areas:
 - Service gaps, barriers, and other problems related to the need for infrastructure development to effect systemic change;
 - Engaging community stakeholders, including youth and family members, in all stages of strategic planning, implementation, evaluation, continuous quality improvement, and the sustaining of a project; and
 - Implementing evidence-based programs with an appropriate balance of fidelity and cultural adaptation.

Section B: Proposed Approach (40 points)

- Describe the purpose, goals and objectives of the proposed project and offer evidence that the proposed activities meet all the guidelines set forth in Section I-2, “Expectations” of this document.
- Describe your current capability and plan for providing technical assistance services addressing all “Required Activities” set forth in Section I-2.1 of this document.
- Describe and justify the proposed technical assistance delivery services model.

- Describe the transition plan from the incumbent TA Center provider to ensure the coordination of an orderly transition of TA services, activities and materials.
- Provide a logic model (see Appendix C, Sample Logic Model) that demonstrates the linkage between the identified need, the proposed approach and outcomes.
- Describe how each grantee's stage of readiness in implementing grant activities will be addressed and how technical assistance service plans will be developed, implemented and monitored.
- Discuss how you will ensure that the technical information you disseminate is relevant, reliable, culturally competent and scientifically sound.
- Discuss how you will ensure that your strategies for TA delivery are effective for your grantees in helping them achieve program goals.
- Describe how you will develop, identify, maintain and utilize a cadre of expert consultants for specialized technical assistance needs.

Section C: Staff, Management, and Relevant Experience (30 points)

- Provide a realistic time line (chart or graph) for the project, showing key activities, milestones and responsible staff. [NOTE: The time line should be part of the Project Narrative. It should not be placed in an appendix.]
- Describe any other organizations that will participate, their roles and responsibilities and their commitment to the project. Include letters of commitment/coordination/support from these organizations in **Appendix 1** of the application.
- Identify key staff, personnel and expert consultants, and their qualifications and experience for providing the types of technical assistance required by this project, demonstrating that they are appropriate and sufficient to conduct all technical assistance service activities. Provide a listing of all staff who will participate in the project, showing the role of each and their level of effort and qualifications.
- Discuss past management experience and current capability to deliver comprehensive, complex and culturally appropriate technical assistance services to grant programs funded by various Federal initiatives.
- Discuss how key staff are familiar with the culture and language of the grantee communities. If the grantee communities are multicultural and multilingual, describe how the staff are qualified to serve these populations.
- Describe how the SS/HS Grantee Council steering committee will be utilized in managing the project and is also representative of the diversity of the grantee

communities, including but not be limited to proposed members, their resumes and areas of expertise.

- Describe the resources available for the proposed project (e.g., facilities, equipment).
- Provide an organizational chart that clearly demonstrates reporting relationships and responsibilities and include the Steering Committee.

Section D: Performance Assessment and Data (20 points)

- Document your ability to collect and report on the required performance measures as specified in Section I-2.2 of this document, including data required by SAMHSA to meet GPRA requirements. Specify and justify any additional measures you plan to use for your grant project.
- Describe how data will be used to manage the project and assure continuous quality improvement.
- Describe your plan for conducting the performance assessment as specified in Section I-2.3 of this RFA and document your ability to conduct the assessment.

NOTE: Although the budget for the proposed project is not a scored review criterion, the Review Group will be asked to comment on the appropriateness of the budget after the merits of the application have been considered.

SUPPORTING DOCUMENTATION

Section E: Literature Citations. This section must contain complete citations, including titles and all authors, for any literature you cite in your application.

Section F: Budget Justification, Existing Resources, Other Support. You must provide a narrative justification of the items included in your proposed budget, as well as a description of existing resources and other support you expect to receive for the proposed project. Be sure to show that no more than 20% of the total grant award will be used for data collection and performance assessment. An illustration of a budget and narrative justification is included in Appendix E of this document.

Section G: Biographical Sketches and Job Descriptions.

- Include a biographical sketch for the Project Director and other key positions. Each sketch should be 2 pages or less. If the person has not been hired, include a position description and/or letter of commitment with a current biographical sketch from the individual.
- Include job descriptions for key personnel. Job descriptions should be no longer than 1 page each.

- Information on what should be included in biographical sketches and job descriptions can be found on page 22, Item 6, in the Program Narrative section of the PHS 5161-1 instruction page, available at www.hhs.gov/forms/PHS-5161-1.doc.

Section H: Confidentiality and SAMHSA Participant Protection/Human Subjects: You must describe procedures relating to Confidentiality, Participant Protection and the Protection of Human Subjects Regulations in Section I of your application, using the guidelines provided below. More detailed guidance for completing this section can be found in Appendix G of this RFA.

Confidentiality and Participant Protection:

Because of the confidential nature of the work in which many SAMHSA grantees are involved, it is important to have safeguards protecting individuals from risks associated with their participation in SAMHSA projects. All applicants must address the eight bullets below. If some are not applicable or relevant to the proposed project, simply state that they are not applicable and indicate why. In addition to addressing these eight bullets, read the section that follows entitled Protection of Human Subjects Regulations to determine if the regulations may apply to your project. If so, you are required to describe the process you will follow for obtaining Institutional Review Board (IRB) approval. While we encourage you to keep your responses brief, there are no page limits for this section and no points will be assigned by the Review Committee. Problems with confidentiality, participant protection and the protection of human subjects identified during peer review of the application must be resolved prior to funding.

- Identify foreseeable risks or adverse effects due to participation in the project and/or in the data collection (performance assessment) activities (including physical, medical, psychological, social, legal, and confidentiality) and provide your procedures for minimizing or protecting participants from these risks.
- Identify plans to provide guidance and assistance in the event there are adverse effects to participants.
- Describe the target population and explain why you are including or excluding certain subgroups. Explain how and who will recruit and select participants.
- State whether participation in the project is voluntary or required. If you plan to provide incentives/compensate participants, specify the type (e.g., money, gifts, coupons) and the value of any such incentives. Provide justification that the use of incentives is appropriate, judicious, and conservative and that incentives do not provide an “undue inducement” which removes the voluntary nature of participation. Incentives should be the minimum amount necessary to meet the programmatic and performance assessment goals of the grant. Applicants should determine the minimum amount that is proven to be effective by consulting with existing local programs and reviewing the relevant literature. In no case may the value of an incentive paid for with SAMHSA discretionary grant funds exceed \$20. (See Appendix G, Confidentiality and Participant Protection.)

- ❑ Describe data collection procedures, including sources (e.g., participants, school records) and the data collecting setting (e.g., clinic, school). Provide copies of proposed data collection instruments and interview protocols in **Appendix 2** of your application, “Data Collection Instruments/Interview Protocols.” State whether specimens such as urine and/or blood will be obtained and the purpose for collecting the specimens. If applicable, describe how the specimens and process will be monitored to ensure both the safety of participants and the integrity of the specimens.
- ❑ Explain how you will ensure privacy and confidentiality of participants’ records, data collected, interviews, and group discussions. Describe where the data will be stored, safeguards (e.g., locked, coding systems, storing identifiers separate from data), and who will have access to the information.
- ❑ Describe the process for obtaining and documenting consent from adult participants and assent from minors along with consent from their parents or legal guardians. Provide copies of all consent forms in **Appendix 3** of your application, “Sample Consent Forms.” If needed, give English translations.
- ❑ Discuss why the risks are reasonable compared to expected benefits from the project.

Protection of Human Subjects Regulations

SAMHSA expects that most grantees funded under this announcement will not have to comply with the Protection of Human Subjects Regulations (45 CFR 46), which requires Institutional Review Board (IRB) approval. However, in some instances, the applicant’s proposed performance assessment design may meet the regulation’s criteria of research involving human subjects. For assistance in determining if your proposed performance assessment meets the criteria in 45 CFR 46, Protection of Human Subjects Regulations, refer to the SAMHSA decision tree on the SAMHSA Web site, under “Applying for a New SAMHSA Grant,” <http://www.samhsa.gov/grants/apply.aspx>.

Applicants whose projects must comply with the Human Subjects Regulations must, in addition to the bullets above, fully describe the process for obtaining IRB approval. While IRB approval is not required at the time of grant award, these grantees will be required, as a condition of award, to provide documentation that an Assurance of Compliance is on file with the Office for Human Research Protections (OHRP). IRB approval must be received in these cases prior to enrolling clients in the project. General information about Human Subjects Regulations can be obtained through OHRP at <http://www.hhs.gov/ohrp>, or ohrp@osophs.dhhs.gov, or (240) 453-6900. SAMHSA-specific questions should be directed to the program contact listed in Section VII of this announcement.

2. REVIEW AND SELECTION PROCESS

SAMHSA applications are peer-reviewed according to the review criteria listed above. For those programs where the individual award is over \$100,000, applications also must be reviewed by the appropriate National Advisory Council.

Decisions to fund a grant are based on:

- the strengths and weaknesses of the application as identified by peer reviewers and, when applicable, approved by the Center for Mental Health Services' National Advisory Council; and
- availability of funds.

VI. AWARD ADMINISTRATION INFORMATION

1. AWARD NOTICES

After your application has been reviewed, you will receive a letter from SAMHSA through postal mail that describes the general results of the review, including the score that your application received.

If you are approved for funding, you will receive an additional notice through postal mail, the Notice of Grant Award, signed by SAMHSA's Grants Management Officer. The Notice of Grant Award is the sole obligating document that allows the grantee to receive Federal funding for work on the grant project.

If you are not funded, you may re-apply if there is another receipt date for the program.

2. ADMINISTRATIVE AND NATIONAL POLICY REQUIREMENTS

- If your application is funded, you must comply with all terms and conditions of the grant award. SAMHSA's standard terms and conditions are available on the SAMHSA Web site at <http://www.samhsa.gov/grants/management.aspx>.
- If your application is funded, you must also comply with the administrative requirements outlined in 45 CFR Part 74 or 45 CFR Part 92, as appropriate. For more information see the SAMHSA Web site (<http://www.samhsa.gov/grants/management.aspx>).
- Depending on the nature of the specific funding opportunity and/or your proposed project as identified during review, SAMHSA may negotiate additional terms and conditions with you prior to grant award. These may include, for example:
 - actions required to be in compliance with confidentiality and participant protection/human subjects requirements;
 - requirements relating to additional data collection and reporting;
 - requirements relating to participation in a cross-site evaluation; or
 - requirements to address problems identified in review of the application.
- If your application is funded, you will be held accountable for the information provided in the application relating to performance targets. SAMHSA program officials will consider your progress in meeting goals and objectives, as well as your failures and

strategies for overcoming them, when making an annual recommendation to continue the grant and the amount of any continuation award. Failure to meet stated goals and objectives may result in suspension or termination of the grant award, or in reduction or withholding of continuation awards.

- Grant funds cannot be used to supplant current funding of existing activities. “Supplant” is defined as replacing funding of a recipient’s existing program with funds from a Federal grant.
- In an effort to improve access to funding opportunities for applicants, SAMHSA is participating in the U.S. Department of Health and Human Services “Survey on Ensuring Equal Opportunity for Applicants.” This survey is included in the application kit for SAMHSA grants and is posted on the SAMHSA Web site. You are encouraged to complete the survey and return it, using the instructions provided on the survey form.

3. REPORTING REQUIREMENTS

In addition to the data reporting requirements listed in Section I-2.2, you must comply with the following reporting requirements:

3.1 Progress and Financial Reports

- You must provide semi-annual and final progress reports. The final progress report must comprehensively summarize information from the semi-annual reports, describe the accomplishments of the project, and describe next steps for implementing plans developed during the grant period.
- You must provide annual and final financial status reports. These reports may be included as separate sections of semi-annual and final progress reports or can be separate documents. Because SAMHSA is extremely interested in ensuring that infrastructure development and enhancement efforts can be sustained, your financial reports must explain plans to ensure the sustainability (see Appendix F, Glossary) of efforts initiated under this grant. Initial plans for sustainability should be described in year 1 of the grant. In each subsequent year, you should describe the status of the project, successes achieved and obstacles encountered in that year.
- SAMHSA will provide guidelines and requirements for these reports at the time of award and at the initial grantee orientation meeting after award. SAMHSA staff will use the information contained in the reports to determine the grantee’s progress toward meeting its goals.

3.2 Government Performance and Results Act

The Government Performance and Results Act (GPRA) mandate accountability and performance-based management by Federal agencies. To meet the GPRA requirements, SAMHSA must collect performance data (i.e., “GPRA data”) from grantees. The performance

requirements for SAMHSA's **YVP TA Center** grant program are described in Section I-2.2 of this document under "Data Collection and Performance Measurement."

3.3 Publications

If you are funded under this grant program, you are required to notify the Government Project Officer (GPO) and SAMHSA's Publications Clearance Officer (240-276-2130) of any materials based on the SAMHSA-funded project that are accepted for publication.

In addition, SAMHSA requests that the grantee:

- Provide the GPO and SAMHSA Publications Clearance Officer with advance copies of publications.
- Include acknowledgment of the SAMHSA grant program as the source of funding for the project.
- Include a disclaimer stating that the views and opinions contained in the publication do not necessarily reflect those of SAMHSA or the U.S. Department of Health and Human Services, and should not be construed as such.

SAMHSA reserves the right to issue a press release about any publication deemed by SAMHSA to contain information of program or policy significance to the substance abuse treatment/substance abuse prevention/mental health services community.

VII. AGENCY CONTACTS

For questions about program issues contact:

Michelle Bechard
Division of Prevention, Traumatic Stress, and Special Programs
SAMHSA/Center for Mental Health Services
1 Choke Cherry Road, Room 6-1113
Rockville, Maryland 20857
(240) 276-1872
michelle.bechard@samhsa.hhs.gov

For questions on grants management issues, contact:

Gwendolyn Simpson
Office of Program Services, Division of Grants Management
Substance Abuse and Mental Health Services Administration
1 Choke Cherry Road, Room 7-1085
Rockville, Maryland 20857
(240) 276-1408
gwendolyn.simpson@samhsa.hhs.gov

Appendix A – Checklist for Formatting Requirements and Screenout Criteria for SAMHSA Grant Applications

SAMHSA’s goal is to review all applications submitted for grant funding. However, this goal must be balanced against SAMHSA’s obligation to ensure equitable treatment of applications. For this reason, SAMHSA has established certain formatting requirements for its applications. If you do not adhere to these requirements, your application will be screened out and returned to you without review.

- Use the PHS 5161-1 application form.
- Applications must be received by the application due date and time, as detailed in Section IV-3 of this grant announcement.
- Information provided must be sufficient for review.
- Text must be legible. Pages must be typed in black ink, single-spaced, using a font of Times New Roman 12, with all margins (left, right, top, bottom) at least one inch each. (For Project Narratives submitted electronically, see separate requirements in Section IV-6 of this announcement under “Submission of Electronic Applications.”)
- To ensure equity among applications, page limits for the Project Narrative cannot be exceeded.
- Paper must be white paper and 8.5 inches by 11.0 inches in size.

To facilitate review of your application, follow these additional guidelines. Failure to adhere to the following guidelines will not, in itself, result in your application being screened out and returned without review. However, the information provided in your application must be sufficient for review. Following these guidelines will help ensure your application is complete, and will help reviewers to consider your application.

- The 10 application components required for SAMHSA applications should be included and submitted in the following order:
 - § Face Page (Standard Form 424 v2, which is in PHS 5161-1)
 - § Abstract
 - § Table of Contents
 - § Budget Form (Standard Form 424A, which is in PHS 5161-1)
 - § Project Narrative and Supporting Documentation
 - § Appendices
 - § Assurances (Standard Form 424B, which is in PHS 5161-1)
 - § Certifications
 - § Disclosure of Lobbying Activities (Standard Form LLL, which is in PHS 5161-1)
 - § Checklist (a form in PHS 5161-1)

- Applications should comply with the following requirements:
 - § Budgetary limitations as specified in Sections I, II, and IV-5 of this announcement.
 - § Documentation of nonprofit status as required in the PHS 5161-1.
- Pages should be typed single-spaced in black ink with one column per page. Pages should not have printing on both sides.
- Pages should be numbered consecutively from beginning to end so that information can be located easily during review of the application. The abstract page should be page 1, the table of contents should be page 2, etc. The four pages of Standard form 424 v2 are not to be numbered. Appendices should be labeled and separated from the Project Narrative and budget section, and the pages should be numbered to continue the sequence.
- The page limits for Appendices stated in Section IV-2.2 of this announcement should not be exceeded.
- Send the original application and two copies to the mailing address in Section IV-6 of this document. Please do not use staples, paper clips, and fasteners. Nothing should be attached, stapled, folded, or pasted. Do not use heavy or lightweight paper or any material that cannot be copied using automatic copying machines. Odd-sized and oversized attachments such as posters will not be copied or sent to reviewers. Do not include videotapes, audiotapes, or CD-ROMs.

Appendix B – Guidance for Electronic Submission of Applications

If you would like to submit your application electronically, you may search www.Grants.gov for the downloadable application package by the funding announcement number (called the opportunity number) or by the Catalogue of Federal Domestic Assistance (CFDA) number. You can find the CFDA number on the first page of the funding announcement.

You must follow the instructions in the User Guide available at the www.Grants.gov apply site, on the Help page. In addition to the User Guide, you may wish to use the following sources for help:

- By e-mail: support@Grants.gov
- By phone: 1-800-518-4726 (1-800-518-GRANTS). The Customer Support Center is open from 7:00 a.m. to 9:00 p.m. Eastern Time, Monday through Friday, excluding Federal holidays.

If this is the first time you have submitted an application through Grants.gov, you must complete four separate registration processes before you can submit your application. Allow at least two weeks (10 business days) for these registration processes, prior to submitting your application. The processes are: 1) DUNS Number registration; 2) Central Contractor Registry (CCR) registration; 3) Credential Provider registration; and 4) Grants.gov registration.

It is strongly recommended that you submit your grant application using Microsoft Office 2003 products (e.g., Microsoft Word 2003, Microsoft Excel, etc.). The new Microsoft Vista operating system and Microsoft Word 2007 products are not currently accepted by Grants.gov. If you do not have access to Microsoft Office products, you may submit PDF files. Directions for creating PDF files can be found on the Grants.gov Web site. Use of file formats other than Microsoft Office or PDF may result in your file being unreadable by our staff.

The Project Narrative must be a separate document in the electronic submission. Formatting requirements for SAMHSA grant applications are described in Appendix A of this announcement. These requirements also apply to applications submitted electronically, with the following exceptions only for Project Narratives submitted electronically in Microsoft Word. These requirements help ensure the accurate transmission and equitable treatment of applications.

- *Text legibility:* Use a font of Times New Roman 12, line spacing of single space, and all margins (left, right, top, and bottom) of at least one inch each. Adhering to these standards will help to ensure the accurate transmission of your document.
- *Amount of space allowed for Project Narrative:* The Project Narrative for an electronic submission may not exceed 15,450 words. **If the Project Narrative for an electronic submission exceeds the word limit, the application will be screened out and will not be reviewed.** To determine the number of words in your Project Narrative document in Microsoft Word, select file/properties/statistics.

Keep the Project Narrative as a separate document. Please consolidate all other materials in your application to ensure the fewest possible number of attachments. Be sure to label each file according to its contents, e.g., “Appendices 1-3”, “Appendices 4-5.”

Ensure all pages in your application are numbered consecutively, with the exception of the standard forms in the PHS-5161 application package. **Documents containing scanned images must also contain page numbers to continue the sequence.** Failure to comply with these requirements may affect the successful transmission and consideration of your application.

Applicants are strongly encouraged to submit their applications to Grants.gov early enough to resolve any unanticipated difficulties prior to the deadline. You may also submit a back-up paper submission of your application. Any such paper submission must be received in accordance with the requirements for timely submission detailed in Section IV-3 of this announcement. The paper submission must be clearly marked: **“Back-up for electronic submission.”** The paper submission must conform with all requirements for non-electronic submissions. If both electronic and back-up paper submissions are received by the deadline, the electronic version will be considered the official submission.

After you electronically submit your application, you will receive an automatic acknowledgement from Grants.gov that contains a Grants.gov tracking number. It is important that you retain this number. **Include the Grants.gov tracking number in the top right corner of the face page (SF 424 v2) for any paper submission. Receipt of the tracking number is the only indication that Grants.gov has successfully received and validated your application. If you do not receive a Grants.gov tracking number, you may want to contact the Grants.gov help desk for assistance.**

The Grants.gov Web site does not accept electronic signatures at this time. Therefore, you must submit a signed paper original of the face page (SF 424 v2), the assurances (SF 424B), and hard copy of any other required documentation that cannot be submitted electronically. **You must include the Grants.gov tracking number for your application on these documents with original signatures, on the top right corner of the face page, and send the documents to the following address. The documents must be received at the following address within 5 business days after your electronic submission.** Delays in receipt of these documents may impact the score your application receives or the ability of your application to be funded.

For United States Postal Service:

Crystal Saunders, Director of Grant Review
Office of Program Services
Substance Abuse and Mental Health Services Administration
Room 3-1044
1 Choke Cherry Road
Rockville, MD **20857**
ATTN: Electronic Applications

For other delivery services, change the zip code to 20850.

If you require a phone number for delivery, you may use (240) 276-1199.

Appendix C – Sample Logic Model

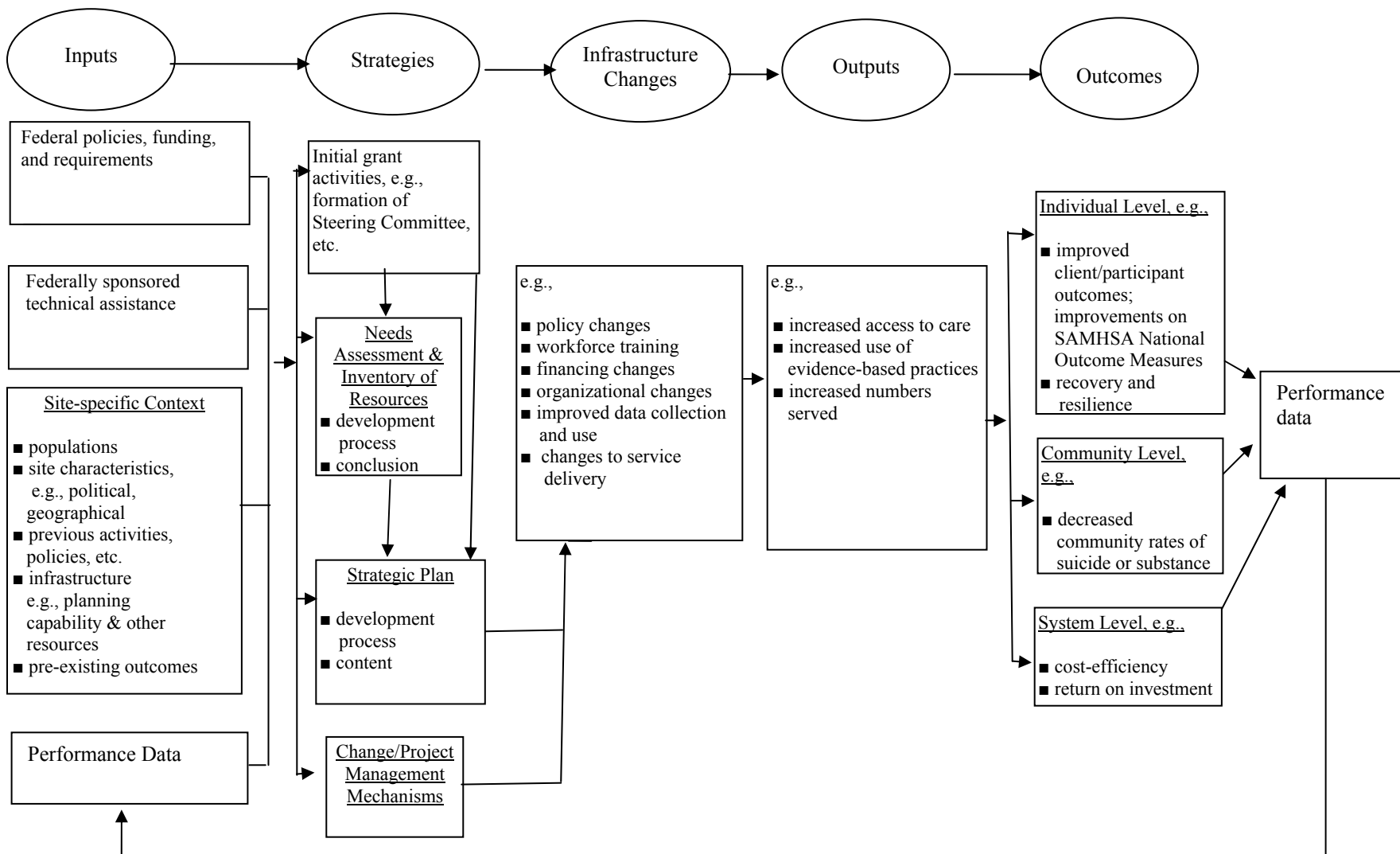
A Logic Model is a tool to show how your proposed project links the purpose, goals, objectives, and tasks stated with the activities and expected outcomes or “change” and can help to plan, implement, and assess your project. The model also links the purpose, goals, objectives, and activities back into planning and evaluation. A Logic Model is a *picture* of your project. It graphically shows the activities and progression of the project. It should also describe the relationships among what resources you put in (inputs), the strategies you use, the infrastructure changes that occur, what takes place (outputs) and what happens or results (outcomes). Based on both your planning and evaluating activities, you can then make a “logical” chain of “if-then” relationships.

Look at the graphic on the following page to see the chain of events that links the inputs to strategies, the strategies to infrastructure changes, the infrastructure changes to outputs and the outputs to outcomes (goals).

The framework you set up to build your model is based on a review of your Statement of Need, in which you state the conditions that gave rise to the project with your targeted systems or agencies. Then you look at the **Inputs**, which are the resources you will invest to change these conditions. These inputs then are organized into the **Strategies** you will use and the **Infrastructure Changes** that will result. These changes then are intended to create **Outputs** such as increased numbers of people served or numbers of providers trained. **Outcomes** are the intended consequences of the program or activity, such as changes in behavior or rates of substance abuse or mental illness.

*The logic model presented is not a required format and SAMHSA does not expect strict adherence to this format. It is presented only as a sample of how you can present a logic model in your application.

Sample Infrastructure Logic Model*



Appendix D – Logic Model Resources

- Chen, W.W., Cato, B.M., & Rainford, N. (1998-9). Using a logic model to plan and evaluate a community intervention program: A case study. *International Quarterly of Community Health Education*, 18(4), 449-458.
- Edwards, E.D., Seaman, J.R., Drews, J., & Edwards, M.E. (1995). A community approach for Native American drug and alcohol prevention programs: A logic model framework. *Alcoholism Treatment Quarterly*, 13(2), 43-62.
- Hernandez, M. & Hodges, S. (2003). *Crafting Logic Models for Systems of Care: Ideas into Action*. [Making children's mental health services successful series, volume 1]. Tampa, FL: University of South Florida, The Louis de la Parte Florida Mental Health Institute, Department of Child & Family Studies. <http://cfs.fmhi.usf.edu> or phone (813) 974-4651
- Hernandez, M. & Hodges, S. (2001). Theory-based accountability. In M. Hernandez & S. Hodges (Eds.), *Developing Outcome Strategies in Children's Mental Health*, pp. 21-40. Baltimore: Brookes.
- Julian, D.A. (1997). Utilization of the logic model as a system level planning and evaluation device. *Evaluation and Planning*, 20(3), 251-257.
- Julian, D.A., Jones, A., & Deyo, D. (1995). Open systems evaluation and the logic model: Program planning and evaluation tools. *Evaluation and Program Planning*, 18(4), 333-341.
- Patton, M.Q. (1997). *Utilization-Focused Evaluation* (3rd Ed.), pp. 19, 22, 241. Thousand Oaks, CA: Sage.
- Wholey, J.S., Hatry, H.P., Newcome, K.E. (Eds.) (1994). *Handbook of Practical Program Evaluation*. San Francisco, CA: Jossey-Bass Inc.

Appendix E – Sample Budget and Justification

ILLUSTRATION OF A SAMPLE DETAILED BUDGET AND NARRATIVE JUSTIFICATION TO ACCOMPANY SF 424A: SECTION B FOR 01 BUDGET PERIOD

OBJECT CLASS CATEGORIES

Personnel

Job Title	Name	Annual Salary	Level of Effort	SAMHSA Funded	Non-Federal Sources	TOTAL
Project Director	J. Doe	\$30,000	1.0	\$30,000	\$-0-	
Clinical Director	J. Doe			\$-0-	In-Kind	
Secretary	Unnamed	\$18,000	0.5	\$-0-	\$ 9,000	
Counselor	R. Down	\$25,000	1.0	\$25,000	\$-0-	
SUBTOTAL				\$55,000	\$9,000	

Enter Personnel subtotal on 424A, Section B, 6.a. \$64,000

Fringe Benefits (24%) \$15,360 \$-0-

SUBTOTAL \$15,360 \$-0-

Enter Fringe Benefits subtotal on 424A, Section B, 6.b. \$15,360

Travel

2 trips for SAMHSA Meetings for 2 Attendees
(Airfare @ \$600 x 4 = \$2,400) + (per diem
@ \$120 x 4 x 6 days = \$2,880) \$5,280 \$-0-
Local Travel (500 miles x .24 per mile) \$-0- \$120

[Note: Current Federal Government per diem rates are available at www.gsa.gov.]

SUBTOTAL \$5,280 \$120

Enter Travel subtotal on 424A, Section B, 6.c. \$ 5,400

Equipment (List Individually)

"Equipment" means an article of nonexpendable, tangible personal property having a useful life of more than one year and an acquisition cost which equals the lesser of (a) the capitalization level established by the governmental unit or nongovernmental applicant for financial statement purposes, or (b) \$5000.

SUBTOTAL \$-0- \$-0-

Enter Equipment subtotal on 424A, Section B, 6.d. \$-0-

ILLUSTRATION OF DETAILED BUDGET AND NARRATIVE JUSTIFICATION (cont'd.)

Supplies

Office Supplies	\$500	\$-0-
Computer Software – Microsoft Word	\$-0-	500

Enter Supplies subtotal on 424A, Section B, 6.e. \$1,000

CONTRACTUAL COSTS

Evaluation

Job Title	Name	Annual Salary	Level of Effort	SAMHSA Funded	Non-Federal Sources	TOTAL
Evaluator	J. Wilson	\$48,000	.05	\$24,000	\$-0-	
Other Staff		\$18,000	1.0	\$18,000	\$-0-	

Fringe Benefits (25%) \$10,500 \$-0-

Travel

2 trips x 1 Evaluator (\$600 x 2)	\$ 1,200	\$-0-
Per Diem @ \$120 x 6	720	\$-0-
Supplies (General Office)	500	\$-0-

Evaluation Contractual Direct Costs \$54,920 \$-0-
 Evaluation Contractual Indirect Costs (19%) \$10,435 \$-0-

Evaluation Contract Subtotal **\$65,355**

SUBTOTAL \$65,355 \$-0- \$65,355

Training

Job Title	Name	Annual Salary	Level of Effort	SAMHSA Funded	Non-Federal Sources	TOTAL
Coordinator	M. Smith	\$ 12,000	0.5	\$12,000	\$-0-	
Admin. Asst.	N. Jones	9,000	0.5	9,000	\$-0-	

Fringe Benefits (25%) 5,250 \$-0-

Travel

2 Trips for Training		
Airfare @ \$600 x 2	\$1,200	\$-0-
Per Diem \$120 x 2 x 2 days	480	\$-0-
Local (500 miles x .24/mile)	120	\$-0-

Supplies

Office Supplies	\$500	\$-0-
Software (Microsoft Word)	\$500	\$-0-

Training Contractual Direct Costs Subtotal \$40,025 \$-0- **\$40,025**
 Training Contractual Indirect Costs Subtotal \$-0- \$-0- **\$-0-**

ILLUSTRATION OF DETAILED BUDGET AND NARRATIVE JUSTIFICATION (cont'd.)

SUBTOTAL	\$105,380	\$-0-	\$105,380
Enter Contractual subtotal on 424A, Section B, 6.f.			\$105,380
	SAMHSA Funded	Non-Federal Sources	TOTAL
<u>OTHER</u>			
Rent (500 Sq. Ft. x \$9.95)	\$ 4,975	\$-0-	
Telephone	\$ 500	\$-0-	
Maintenance (e.g., van)	\$-0-	\$ 2,500	
Audit	\$-0-	\$ 3,000	
Consultants = Expert @ \$250/day X 6 day (If expert is known, should list by name)	\$ 1,500	\$-0-	
SUBTOTAL	\$6,957	\$5,500	
Enter Other subtotal on 424A, Section B, 6.h.			\$12,475
<u>TOTAL DIRECT CHARGES (sum of 6.a-6.h)</u>			
Enter Total Direct on 424A, Section B, 6.i.			\$192,640
<u>INDIRECT CHARGES</u>			
15% of Salary and Wages (copy of negotiated Indirect Cost Rate Agreement attached) [\$64,000 X 15% = \$9,600]			
Enter Indirect Costs subtotal of 424A, Section B, 6.j.			\$9,600
Enter TOTALS on 424A, Section B, 6.k. (sum of 6i and 6j)			\$202,240

JUSTIFICATION

PERSONNEL - Describe the role and responsibilities of each position.

FRINGE BENEFITS - List all components of the fringe benefit rate.

EQUIPMENT - List equipment and describe the need and the purpose of the equipment in relation to the proposed project.

SUPPLIES - Generally self-explanatory; however, if not, describe need. Include explanation of how the cost has been estimated.

TRAVEL - Explain need for all travel other than that required by SAMHSA.

CONTRACTUAL COSTS - Explain the need for each contractual arrangement and how these components relate to the overall project.

OTHER - Generally self-explanatory. If consultants are included in this category, explain the need and how the consultant's rate has been determined. If rent is requested, provide the name of the owner of the building/facility. If anyone related to the project owns the building which is a less than arms length arrangement, provide cost of ownership/use allowance.

INDIRECT COST RATE - If your organization has no indirect cost rate, please indicate whether your organization plans to: a) waive indirect costs if an award is issued; or b) negotiate and establish an indirect cost rate with DHHS within 90 days of award issuance.

OTHER SOURCES – If other non-Federal sources of funding, including match or cost sharing as a total operating budget is included, provide the name of the source, e.g., in-kind, foundation, program income, Medicaid, State funds, applicant organization, etc., and explain its use.

CALCULATION OF FUTURE BUDGET PERIODS
(based on first 12-month budget period)

Review and verify the accuracy of future year budget estimates. Increases or decreases in the future years must be explained and justified. (NOTE: salary cap of \$191,300 is effective for all FY 2008 awards.)

	First 12-month Period	Second 12-month Period	Third 12-month Period
Personnel			
Project Director	30,000	30,000	30,000
Secretary*	9,000	18,000	18,000
Counselor	25,000	25,000	25,000
TOTAL PERSONNEL	64,000	73,000	73,000

*Increased from 50% to 100% effort in 02 through 03 budget periods.

Fringe Benefits (24%)	15,360	17,520	17,520
Travel	5,400	5,400	5,400
Equipment	-0-	-0-	-0-
Supplies**	1,000	520	520

**Increased amount in 01 year represents costs for software.

Contractual			
Evaluation***	65,355	67,969	70,688
Training	40,025	40,025	40,025

***Increased amounts in 02 and 03 years reflect the increase in client data collection.

Other	1,500	1,500	1,500
Total Direct Costs	192,640	205,934	208,653
Indirect Costs (15% S&W)	9,600	9,600	9,600
TOTAL COSTS	202,240	216,884	219,603

The Federal dollars requested for all object class categories for the first 12-month budget period are entered on Form 424A, Section B, Column (1), lines 6a-6i. The total Federal dollars requested for the second through the fifth 12-month budget periods are entered on Form 424A, Section E, Columns (b) – (e), line 20. The RFA will specify the maximum number of years of support that may be requested.

Appendix F – Glossary

Best Practice: Best practices are practices that incorporate the best objective information currently available from recognized experts regarding effectiveness and acceptability.

Cooperative Agreement: A cooperative agreement is a form of Federal grant. Cooperative agreements are distinguished from other grants in that, under a cooperative agreement, substantial involvement is anticipated between the awarding office and the recipient during performance of the funded activity. This involvement may include collaboration, participation, or intervention in the activity. HHS awarding offices use grants or cooperative agreements (rather than contracts) when the principal purpose of the transaction is the transfer of money, property, services, or anything of value to accomplish a public purpose of support or stimulation authorized by Federal statute. The primary beneficiary under a grant or cooperative agreement is the public, as opposed to the Federal Government.

Cost Sharing or Matching: Cost-sharing refers to the value of allowable non-Federal contributions toward the allowable costs of a Federal grant project or program. Such contributions may be cash or in-kind contributions. For SAMHSA grants, cost-sharing or matching is not required, and applications will not be screened out on the basis of cost-sharing. However, applicants often include cash or in-kind contributions in their proposals as evidence of commitment to the proposed project. This is allowed, and this information may be considered by reviewers in evaluating the quality of the application.

Cross-Site TA: Technical assistance services provided to groups of grantees based on shared demographic, geographic, and/or content specific issues. Examples of cross-site technical assistance include peer-to-peer mentoring; telephone conference calls; national conferences, grantee cohort and topic specific meetings, and new grantee orientation meetings; and on line learning forums and web based courses.

Evidence-based: The extent to which an intervention is supported by scientific data to indicate its effectiveness. Evidence-based programs have met high standards of safety, efficacy and effectiveness, based on the strength of the study design, magnitude of the beneficial effects of the intervention, sustainability of the effects over time and replication of the benefits across different settings and populations.

Fidelity: Fidelity is the degree to which a specific implementation of a program or practice resembles, adheres to or is faithful to the evidence-based model on which it is based. Fidelity is formally assessed using rating scales of the major elements of the evidence-based model. A toolkit on how to develop and use fidelity instruments is available from the SAMHSA-funded Evaluation Technical Assistance Center at <http://tecathsri.org> or by calling (617) 876-0426.

Grant: A grant is the funding mechanism used by the Federal Government when the principal purpose of the transaction is the transfer of money, property, services, or anything of value to accomplish a public purpose of support or stimulation authorized by Federal statute. The primary beneficiary under a grant or cooperative agreement is the public, as opposed to the Federal Government.

In-Kind Contribution: In-kind contributions toward a grant project are non-cash contributions (e.g., facilities, space, services) that are derived from non-Federal sources, such as State or sub-State non-Federal revenues, foundation grants or contributions from other non-Federal public or private entities.

Logic Model: A logic model is a diagrammatic representation of a theoretical framework. A logic model describes the logical linkages among program resources, conditions, strategies, short-term outcomes and long-term impact. More information on how to develop logics models and examples can be found through the resources listed in Appendices C and D.

Practice: A practice is any activity or collective set of activities, intended to improve outcomes for people with or at risk for substance abuse and/or mental illness. Such activities may include direct service provision or they may be supportive activities, such as efforts to improve access to and retention in services, organizational efficiency or effectiveness, community readiness, collaboration among stakeholder groups, education, awareness, training or any other activity that is designed to improve outcomes for people with or at risk for substance abuse or mental illness.

Practice Support System: This term refers to contextual factors that affect practice delivery and effectiveness in the pre-adoption phase, delivery phase and post-delivery phase, such as a) community collaboration and consensus building, b) training and overall readiness of those implementing the practice, and c) sufficient ongoing supervision for those implementing the practice.

Safe Schools/Healthy Students Initiative Grant Program: The SS/HS initiative is a collaborative grant program supported by three Federal departments (Education, Justice, and Health & Human Services) that provides funds for grantees to implement and coordinate a comprehensive plan of activities, curricula, programs and services that focus on creating safe school environments, promoting healthy childhood development, and preventing youth violence, alcohol and drug use. A critical feature of the program is the linking and integration of existing and new services and activities into a comprehensive approach to violence prevention and healthy development that reflects the overall vision for the community, not the isolated objectives of a single agency or activity. The comprehensive plan SS/HS grantees develop must address the following five elements:

1. A safe school environment and violence prevention activities.
2. Alcohol, tobacco and other drug prevention activities.
3. Student behavioral, social and emotional supports.
4. Mental health services.
5. Early childhood social and emotional learning programs.

More information about SS/HS can be found at www.sshs.samhsa.gov.

Stakeholder: A stakeholder is an individual, organization, constituent group or other entity that has an interest in and will be affected by a proposed grant project.

Sustainability: Sustainability is the ability to continue a program or practice after SAMHSA grant funding has ended.

Target Population: The target population is the specific population of people whom a particular program or practice is designed to serve or reach.

Appendix G – Confidentiality and Participant Protection

1. Protect Clients and Staff from Potential Risks

- Identify and describe any foreseeable physical, medical, psychological, social, and legal risks or potential adverse effects as a result of the project itself or any data collection activity.
- Describe the procedures you will follow to minimize or protect participants against potential risks, including risks to confidentiality.
- Identify plans to provide guidance and assistance in the event there are adverse effects to participants.
- Where appropriate, describe alternative treatments and procedures that may be beneficial to the participants. If you choose not to use these other beneficial treatments, provide the reasons for not using them.

2. Fair Selection of Participants

- Describe the target population(s) for the proposed project. Include age, gender, and racial/ethnic background and note if the population includes homeless youth, foster children, children of substance abusers, pregnant women, or other targeted groups.
- Explain the reasons for including groups of pregnant women, children, people with mental disabilities, people in institutions, prisoners and individuals who are likely to be particularly vulnerable to HIV/AIDS.
- Explain the reasons for including or excluding participants.
- Explain how you will recruit and select participants. Identify who will select participants.

3. Absence of Coercion

- Explain if participation in the project is voluntary or required. Identify possible reasons why participation is required, for example, court orders requiring people to participate in a program.
- If you plan to compensate participants, state how participants will be awarded incentives (e.g., money, gifts, etc.). Provide justification that the use of incentives is appropriate, judicious, and conservative and that incentives do not provide an “undue inducement” which removes the voluntary nature of participation. Incentives should be the minimum amount necessary to meet the programmatic and performance assessment goals of the grant. Applicants should determine the minimum amount that is proven effective by

consulting with existing local programs and reviewing the relevant literature. In no case may the value of an incentive paid for with SAMHSA discretionary grant funds exceed \$20.

- State how volunteer participants will be told that they may receive services intervention even if they do not participate in or complete the data collection component of the project.

4. Data Collection

- Identify from whom you will collect data (e.g., from participants themselves, family members, teachers, others). Describe the data collection procedures and specify the sources for obtaining data (e.g., school records, interviews, psychological assessments, questionnaires, observation, or other sources). Where data are to be collected through observational techniques, questionnaires, interviews or other direct means, describe the data collection setting.
- Identify what type of specimens (e.g., urine, blood) will be used, if any. State if the material will be used just for evaluation or if other use(s) will be made. Also, if needed, describe how the material will be monitored to ensure the safety of participants.
- Provide in **Appendix 2, “Data Collection Instruments/Interview Protocols,”** copies of all available data collection instruments and interview protocols that you plan to use.

5. Privacy and Confidentiality

- Explain how you will ensure privacy and confidentiality. Include who will collect data and how it will be collected.
- Describe:
 - How you will use data collection instruments.
 - Where data will be stored.
 - Who will or will not have access to information.
 - How the identity of participants will be kept private, for example, through the use of a coding system on data records, limiting access to records, or storing identifiers separately from data.

NOTE: If applicable, grantees must agree to maintain the confidentiality of alcohol and drug abuse client records according to the provisions of **Title 42 of the Code of Federal Regulations, Part II.**

6. Adequate Consent Procedures

- List what information will be given to people who participate in the project. Include the type and purpose of their participation. Identify the data that will be collected, how the data will be used and how you will keep the data private.
- State:
 - Whether or not their participation is voluntary.
 - Their right to leave the project at any time without problems.
 - Possible risks from participation in the project.
 - Plans to protect clients from these risks.
- Explain how you will get consent for youth, the elderly, people with limited reading skills and people who do not use English as their first language.

NOTE: If the project poses potential physical, medical, psychological, legal, social or other risks, you **must** obtain written informed consent.

- Indicate if you will obtain informed consent from participants or assent from minors along with consent from their parents or legal guardians. Describe how the consent will be documented. For example: Will you read the consent forms? Will you ask prospective participants questions to be sure they understand the forms? Will you give them copies of what they sign?
- Include, as appropriate, sample consent forms that provide for: (1) informed consent for participation in service intervention; (2) informed consent for participation in the data collection component of the project; and (3) informed consent for the exchange (releasing or requesting) of confidential information. The sample forms must be included in **Appendix 3, “Sample Consent Forms”**, of your application. If needed, give English translations.

NOTE: Never imply that the participant waives or appears to waive any legal rights, may not end involvement with the project, or releases your project or its agents from liability for negligence.

- Describe if separate consents will be obtained for different stages or parts of the project. For example, will they be needed for both participant protection in treatment intervention and for the collection and use of data?
- Additionally, if other consents (e.g., consents to release information to others or gather information from others) will be used in your project, provide a description of the consents. Will individuals who do not consent to having individually identifiable data collected for evaluation purposes be allowed to participate in the project?

7. Risk/Benefit Discussion

Discuss why the risks are reasonable compared to expected benefits and importance of the knowledge from the project.

Protection of Human Subjects Regulations

Applicants may also have to comply with the Protection of Human Subjects Regulations (45 CFR 46), depending on the evaluation and data collection procedures proposed and the population to be served.

Applicants must be aware that even if the Protection of Human Subjects Regulations do not apply to all projects funded, the specific performance assessment design proposed by the applicant may require compliance with these regulations. For assistance in determining if your proposed performance assessment meets the criteria in 45 CFR 46, Protection of Human Subjects Regulations, refer to the SAMHSA decision tree on the SAMHSA Web site, under “Applying for a New SAMHSA Grant,” <http://www.samhsa.gov/grants/apply.aspx>.

Applicants whose projects must comply with the Protection of Human Subjects Regulations must describe the process for obtaining Institutional Review Board (IRB) approval fully in their applications. While IRB approval is not required at the time of grant award, these applicants will be required, as a condition of award, to provide the documentation that an Assurance of Compliance is on file with the Office for Human Research Protections (OHRP) and that IRB approval has been received prior to enrolling any clients in the proposed project.

General information about Protection of Human Subjects Regulations can be obtained on the Web at <http://www.hhs.gov/ohrp>. You may also contact OHRP by e-mail (ohrp@osophs.dhhs.gov) or by phone (240/453-6900). SAMHSA-specific questions related to Protection of Human Subjects Regulations should be directed to the program contact listed in Section VII of this RFA.