

# MODAPS/LAADS/MrDC

Ed Masuoka and Robert Wolfe, NASA GSFC 614.5

Mike Teague, SSAI

Gang Ye and Karen Horrocks, SAIC

# http://ladsweb.nascom.nasa.gov/

# Level 2 Browser



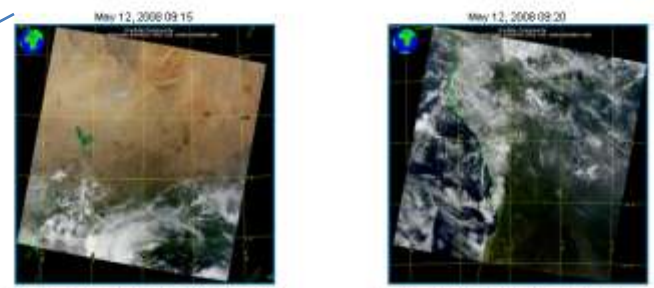
**Level 2 Browser**

Satellite: Terra  
 Date: May 12, 2008  
 Parameter: RGB  
 Collection: 5  
 Spatial: N 10.0, S -10.0, E 10.0, W -10.0 Combined:

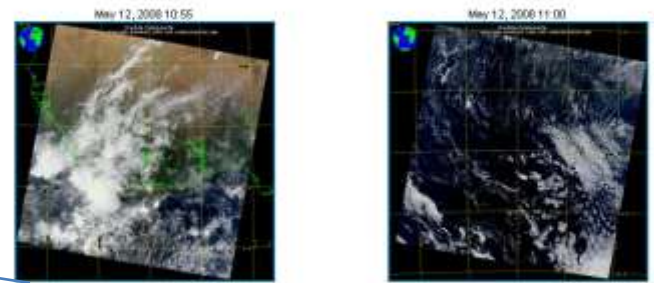
Satellite: Terra  
 Date: May 12, 2008  
 Parameter: RGB  
 Collection: 5 - Coll 5 AQUA/TERRA Forward and Reprocessing

Click on the thumbnail image to view a higher resolution image. [View Help](#)

Displaying results 1 - 4 of 9. 1/2 (3) (Next) (View All)



M000219M.A2008135.0915.005.2000133194900.hdf  M000219M.A2008135.0920.005.2000133194626.hdf



M000219M.A2008135.1055.005.2000133194754.hdf  M000219M.A2008135.1100.005.2000133194736.hdf

**Level 2 Browser**

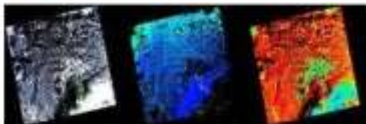
Satellite: Terra  
 Date: May 12, 2008  
 Parameter: RGB  
 Collection: 5

Specify Bounding Box Coordinates as:  
 North, West, East, South

North: 10  
 West: -10 East: 10  
 South: -10

[View high resolution image of Terra MODIS RGB for May 12, 2008](#)

[Privacy Policy and Important Notices](#) Webmaster: Karen Horvack  
 NASA Official: Ed Masuoka  
[Send Us Your Comments](#)



# LAADS Web

Level 1 and Atmosphere Archive and Distribution System

- + HOME
- + DATA
- IMAGES**
- + TOOLS
- + HELP

## Level 3 Browser

Satellite: Terra  
 Date: March 2008  
 Parameters: Aerosol Optical Depth  
 Collection: 5

Month: Mar Year: 2008  
 Parameter: Aerosol Optical Depth  
 Collection: S - Coll 5 AQUA/TERRA Forward and Reprocessing  
 Update

Click on the thumbnail image to view a higher resolution image.

+ Previous

**Daily**

March 1, 2008  
  
 MCD08\_D3 A2008061.005.2008063200137 hdf

March 2, 2008  
  
 MCD08\_D3 A2008062.005.2008063225716 hdf

March 3, 2008  
  
 MCD08\_D3 A2008063.005.2008064190624 hdf

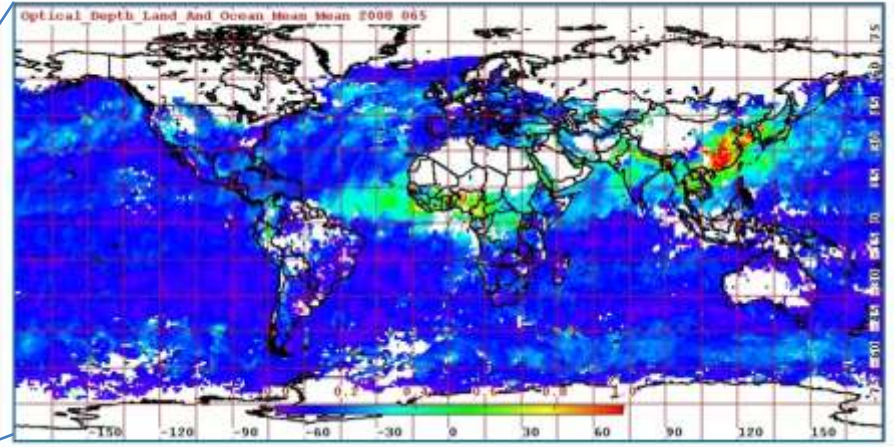
March 4, 2008  
  
 MCD08\_D3 A2008064.005.2008065225041 hdf

**Eight-Day**

February 28, 2008 - March 4, 2008  
  
 MCD08\_E3 A2008057.005.2008087172742 hdf

**Monthly**

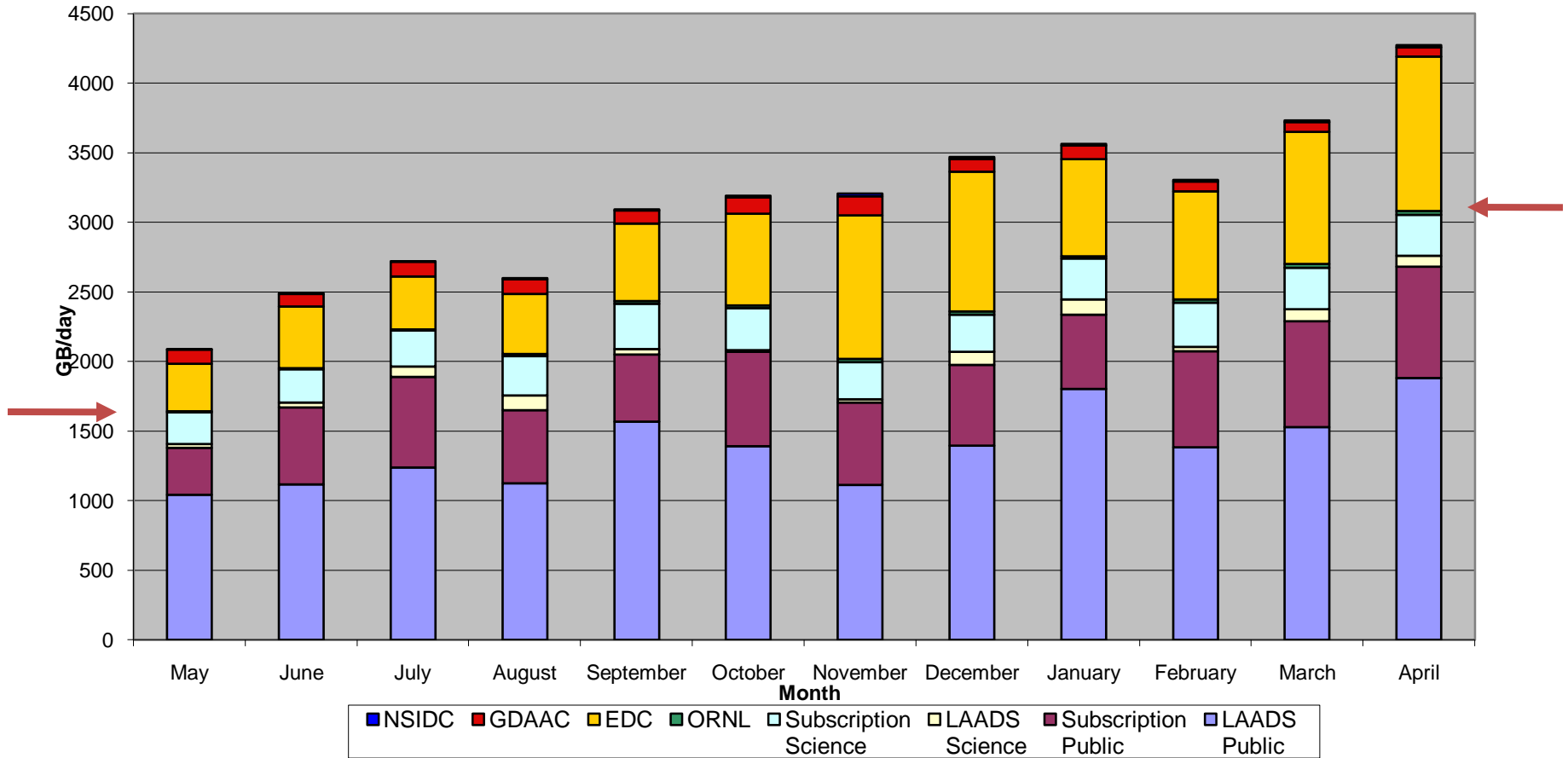
Click on the image to view a higher resolution image. Please note that this will open a new browser window.



# Distribution (non-DAAC)

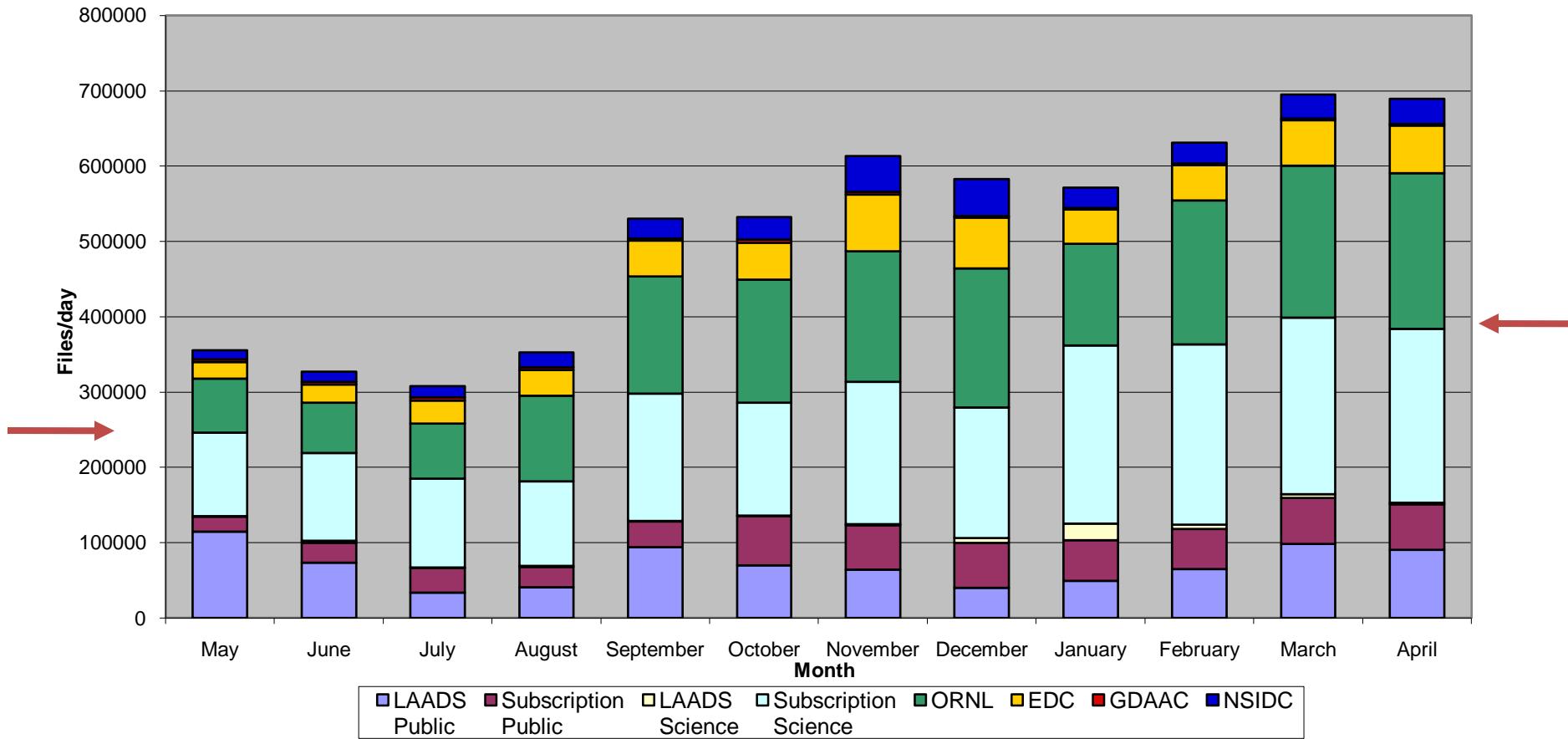
## 3TB/day

MODAPS Average Daily Distribution by Volume

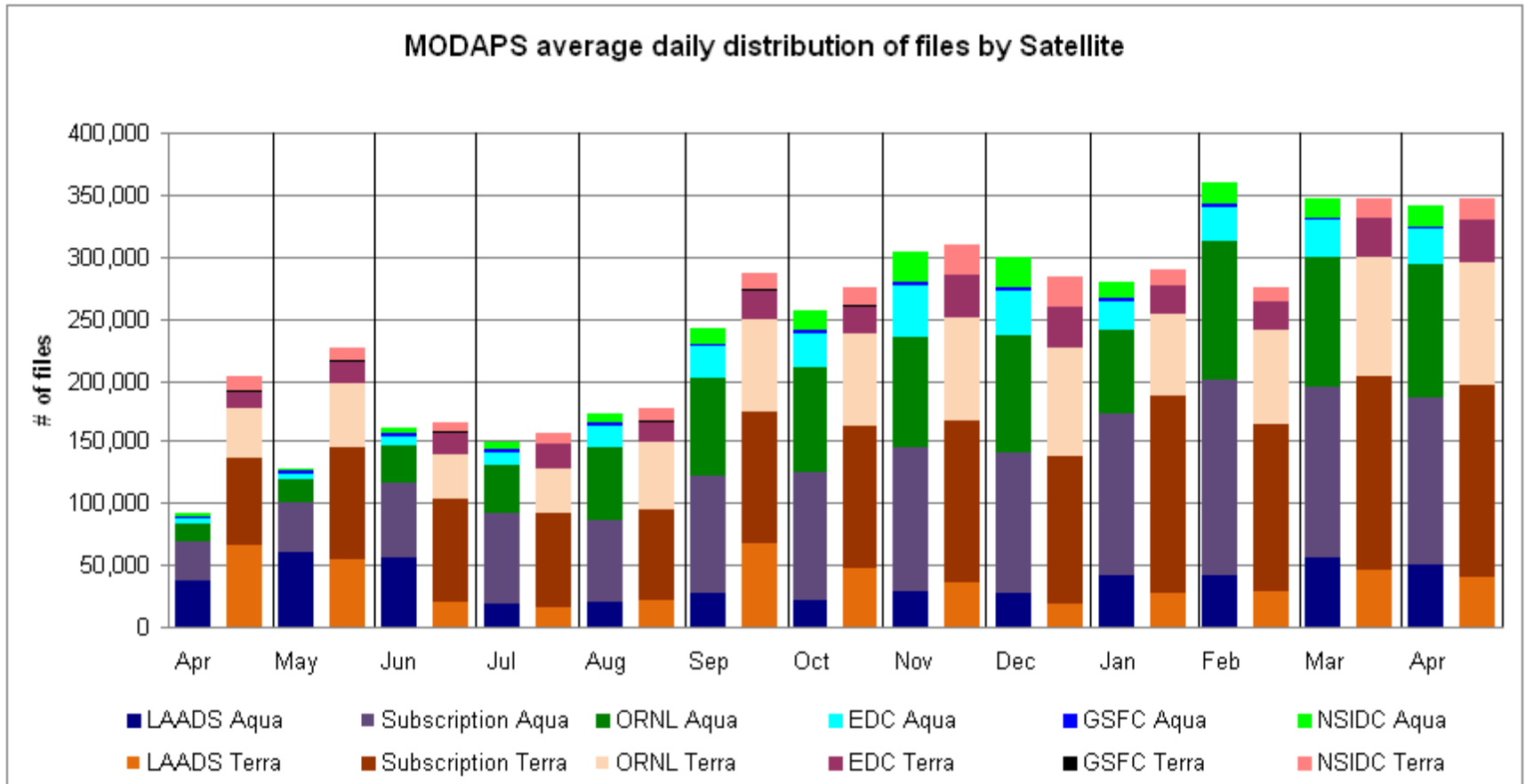


# Files (non-DAAC) 400,000/day

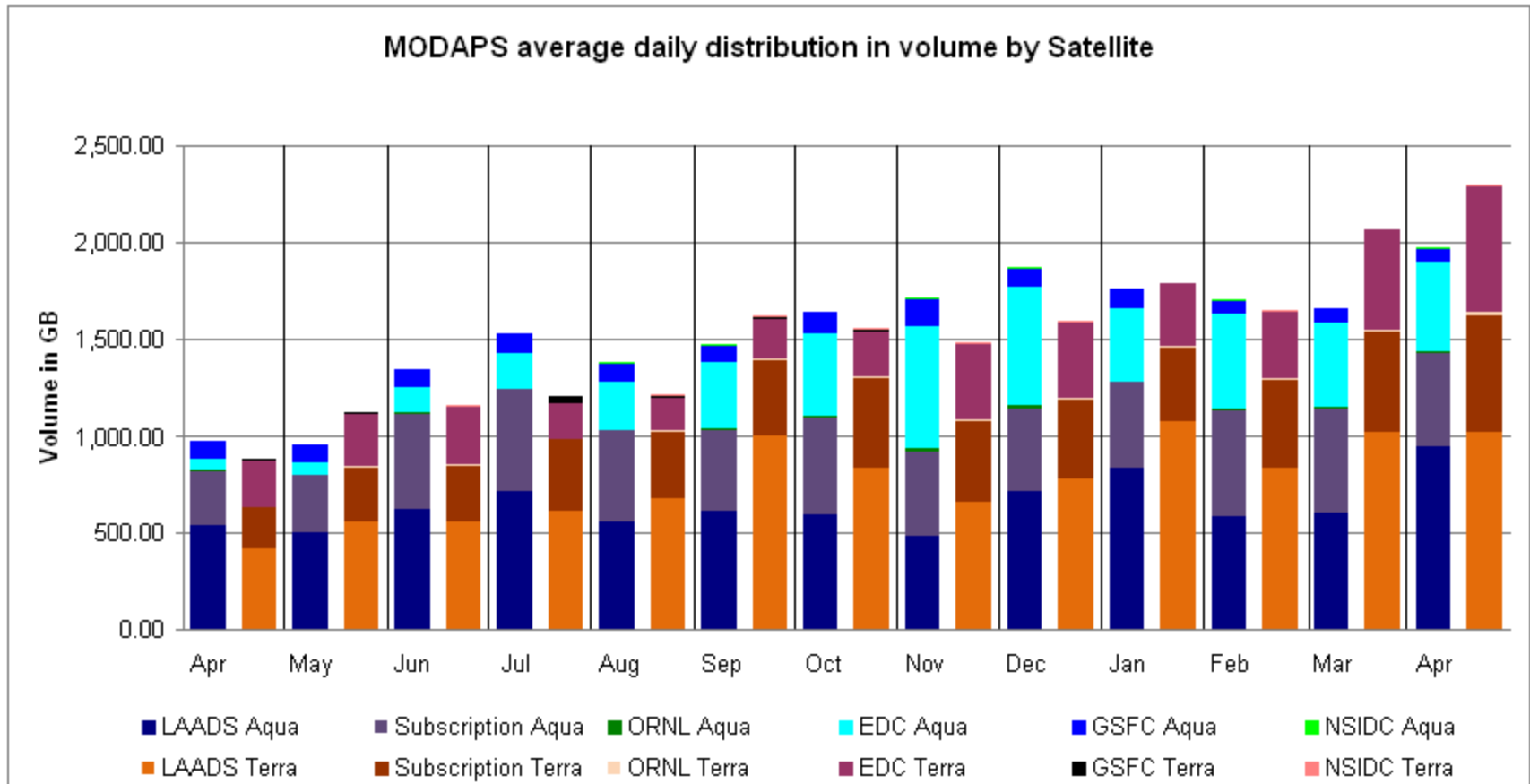
MODAPS Average Daily Distribution by Files



# # files distributed per day by mission

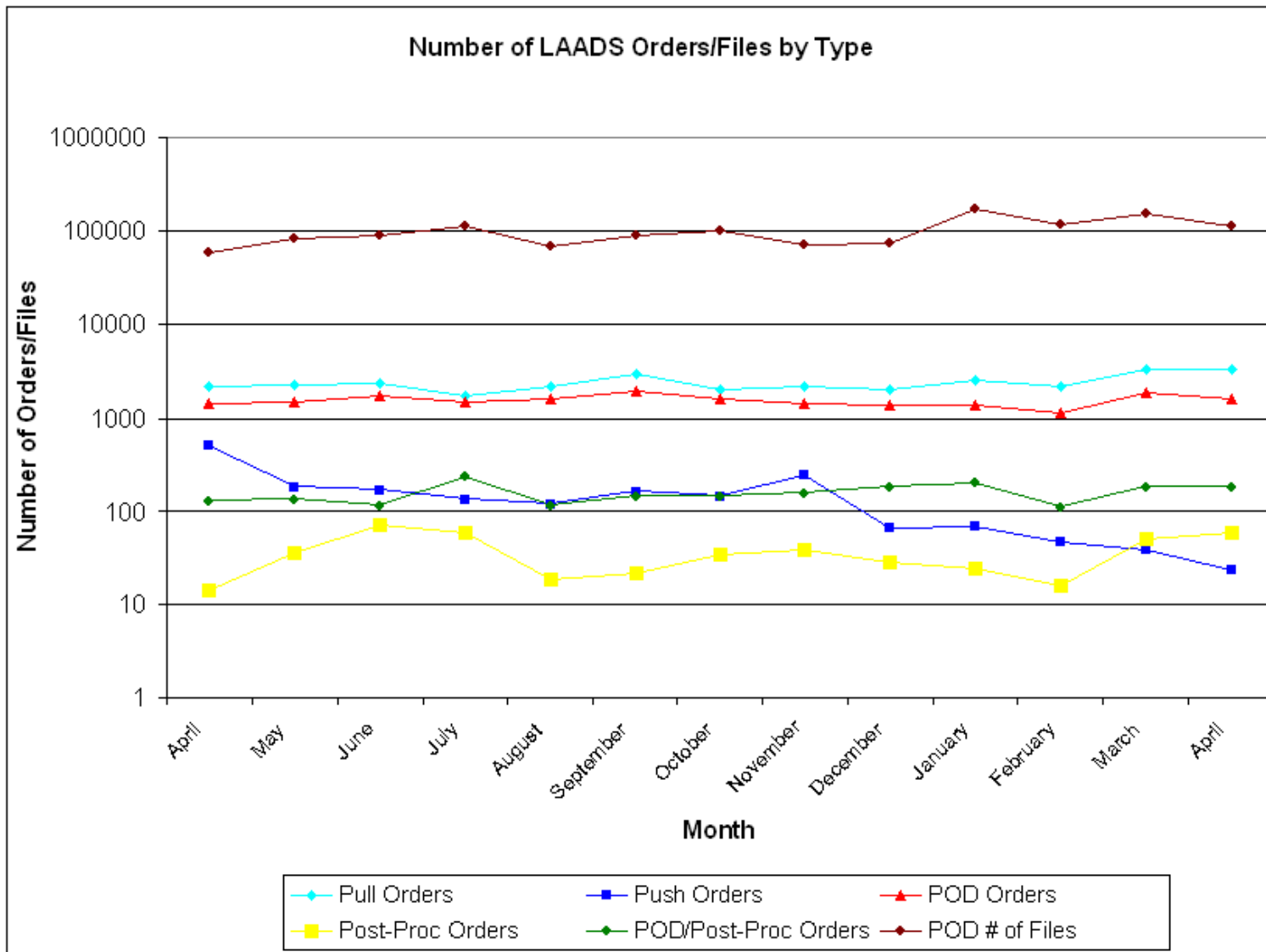


# Volume per day by mission

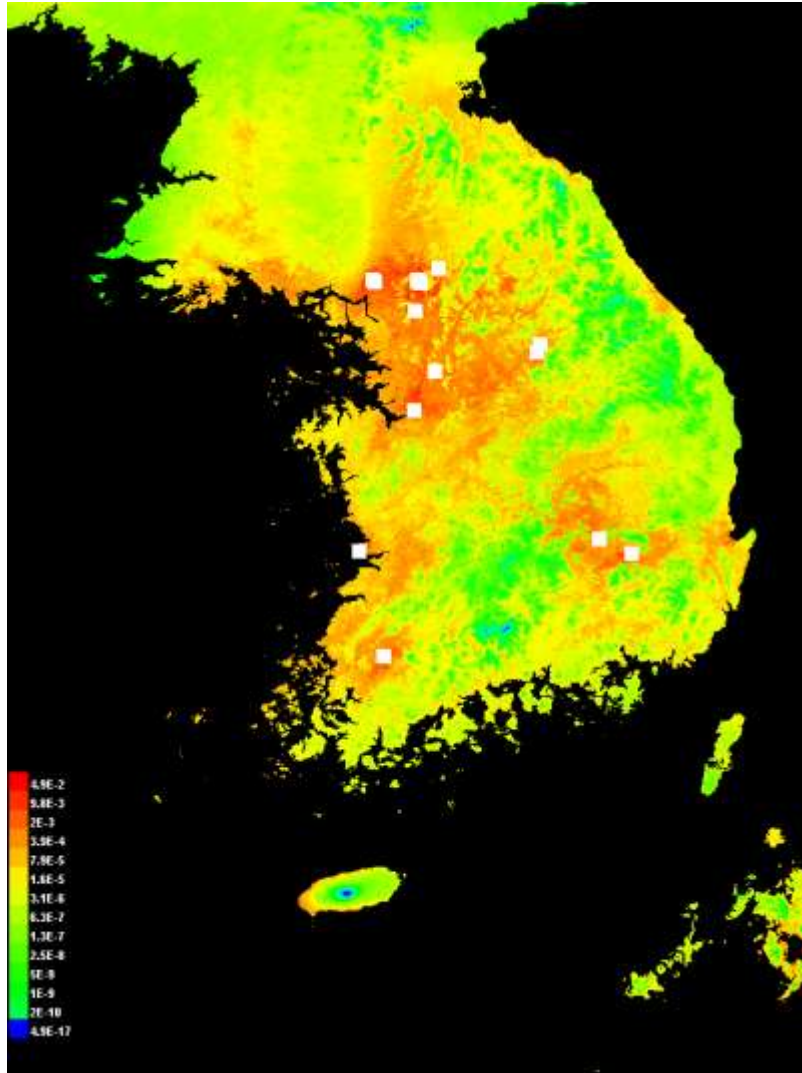




# # of orders by type



# Post-processed MODIS VI used in habitat modeling



Maxent model of mosquito species range: Korea for Japanese Encephalitis  
J. Grieco and P. Masuoka (USUHS),  
A. Anyamba (GSFC/NASA)

# LAADS distribution

- Product distribution/archiving metrics in EMS
  - Distribution by user community
  - Information summaries by product
  - Uniform reporting across all DAACs
- Product metadata and browse in ECHO
  - Replaces EDG for cross data center ordering
- All Level 1B will be online by September
  - Eliminates delay in large orders
  - Facilitates other ordering interface

# MODAPS production

- C5 reprocessing filled up GSFC mission network bandwidth
  - Increasing network capacity (10GigE)
  - C5 Land ending drops X-rate from 16x to 2x
- Atmosphere C-51 reprocessing starts in June
- Land C5 reprocessing “clean-up” items
- ACCESS Gap-filled products for NACP modelers
- CEOP (Coordinate Earth Observing Period)
- C6 Atmosphere and Land Science tests
- C6 Atmosphere (> 40x) and C6 Land (20x)