



## Toward the characterization of upper tropospheric clouds using Atmospheric Infrared Sounder and Microwave Limb Sounder observations

Brian H. Kahn,<sup>1</sup> Annmarie Eldering,<sup>1</sup> Amy J. Braverman,<sup>1</sup> Eric J. Fetzer,<sup>1</sup> Jonathan H. Jiang,<sup>1</sup> Evan Fishbein,<sup>1</sup> and Dong L. Wu<sup>1</sup>

Received 22 March 2006; revised 11 October 2006; accepted 19 October 2006; published 1 March 2007.

[1] We estimate the accuracy of cloud top altitude ( $Z$ ) retrievals from the Atmospheric Infrared Sounder (AIRS) and Advanced Microwave Sounding Unit (AMSU) observing suite ( $Z_A$ ) on board the Earth Observing System Aqua platform. We compare  $Z_A$  with coincident measurements of  $Z$  derived from the micropulse lidar and millimeter wave cloud radar at the Atmospheric Radiation Measurement (ARM) program sites of Nauru and Manus islands ( $Z_{ARM}$ ) and the inferred  $Z$  from vertically resolved Microwave Limb Sounder (MLS) ice water content (IWC) retrievals. The mean difference in  $Z_A$  minus  $Z_{ARM}$  plus or minus one standard deviation ranges from  $-2.2$  to  $1.6$  km  $\pm$  1.0 to 4.2 km for all cases of AIRS effective cloud fraction ( $f_A$ )  $>$  0.15 at Manus Island using the cloud radar only. The range of mean values results from using different approaches to determine  $Z_{ARM}$ , day/night differences, and the magnitude of  $f_A$ ; the variation about the mean decreases for increasing values of  $f_A$ . Analysis of  $Z_{ARM}$  from the micropulse lidar at Nauru Island for cases restricted to  $0.05 \leq f_A \leq 0.15$  indicates a statistically significant improvement in  $Z_A - Z_{ARM}$  over the cloud radar-derived values at Manus Island. In these cases the  $Z_A - Z_{ARM}$  difference is  $-1.1$  to  $2.1$  km  $\pm$  3.0 to 4.5 km. These results imply that the operational  $Z_A$  is quantitatively useful for constraining cirrus altitude despite the nominal 45 km horizontal resolution. Mean differences of cloud top pressure ( $P_{CLD}$ ) inferred from coincident AIRS and MLS ice water content (IWC) retrievals depend upon the method of defining AIRS  $P_{CLD}$  (as with the ARM comparisons) over the MLS spatial scale, the peak altitude and maximum value of MLS IWC, and  $f_A$ . AIRS and MLS yield similar vertical frequency distributions when comparisons are limited to  $f_A >$  0.1 and  $IWC >$  1.0 mg m<sup>-3</sup>. Therefore the agreement depends upon the opacity of the cloud, with decreased agreement for optically tenuous clouds. Further, the mean difference and standard deviation of AIRS and MLS  $P_{CLD}$  are highly dependent on the MLS tangent altitude. For MLS tangent altitudes greater than 146 hPa, the strength of the limb technique, the disagreement becomes statistically significant. This implies that AIRS and MLS “agree” in a statistical sense at lower tangent altitudes and “disagree” at higher tangent altitudes. These results provide important insights on upper tropospheric cloudiness as observed by nadir-viewing AIRS and limb-viewing MLS.

**Citation:** Kahn, B. H., A. Eldering, A. J. Braverman, E. J. Fetzer, J. H. Jiang, E. Fishbein, and D. L. Wu (2007), Toward the characterization of upper tropospheric clouds using Atmospheric Infrared Sounder and Microwave Limb Sounder observations, *J. Geophys. Res.*, 112, D05202, doi:10.1029/2006JD007336.

### 1. Introduction

[2] Validating satellite cloud observations is made challenging by spatial and temporal cloud variability at scales similar to and smaller than the satellite measurement. Historically, satellite derived cloud quantities have been compared to ground-based measurements. Recently, a set of satellite instruments flying in formation, dubbed the

“A-Train,” provides a unique opportunity to cross validate cloud measurements made from different angles and platforms with close coincidence. A high-quality record of upper tropospheric cloudiness will lead toward an improved understanding of atmospheric hydrological processes, atmospheric transport in the tropopause region, and the role of cloudiness in Earth’s present and future climate [Intergovernmental Panel on Climate Change, 2001].

[3] Much effort over the years has been spent on the cross comparison of cloud observations from in situ, airborne, spaceborne and surface-based instrumentation. This includes intercomparisons of satellite-retrieved cloud prop-

<sup>1</sup>Jet Propulsion Laboratory, Pasadena, California, USA.

erties to surface-based active measurements [e.g., *Smith and Platt*, 1978; *Vanbauce et al.*, 2003; *Berendes et al.*, 2004; *Hollars et al.*, 2004; *Naud et al.*, 2004; *Elouragini et al.*, 2005; *Hawkinson et al.*, 2005; *Mace et al.*, 2005], retrievals from multiple satellite platforms [e.g., *Stubenrauch et al.*, 1999, 2005; *Wylie and Wang*, 1999; *Naud et al.*, 2002; *Mahesh et al.*, 2004], satellite to aircraft platforms [e.g., *Sherwood et al.*, 2004], and multiple instruments collocated on single and multiple aircraft platforms [e.g., *Smith and Frey*, 1990; *Frey et al.*, 1999; *Holz et al.*, 2006].

[4] In situ measurements of cloud vertical location, particle size distribution, ice particle habit, extinction coefficient, water phase, and ice and liquid water content are critically important for independently validating remote sensing-derived cloud quantities [*Heymsfield and McFarquhar*, 2002]. However, cross comparing satellite-derived cloud quantities is equally important for assessing consistency over global atmospheric conditions, as well as for algorithmic and product improvements. The cross comparison of cloud quantities is a more difficult problem than the comparison of other fields, such as temperature and water vapor [*Fetzer et al.*, 2006; *Gottelman et al.*, 2006], because of the greater variability of clouds on short temporal and spatial scales.

[5] One of the more important physical quantities required for cloud-related research is cloud height [*Cooper et al.*, 2003]. Active measurements, including the millimeter wave cloud radar and micropulse lidar located at the Atmospheric Radiation Measurement (ARM) program sites [*Ackerman and Stokes*, 2003], the Geoscience Laser Altimeter System (GLAS) located on board the Ice, Cloud, and Land Elevation Satellite (ICESat) [*Spinhirne et al.*, 2005], and the CloudSat [*Stephens et al.*, 2002] and Cloud-Aerosol Lidar and Infrared Pathfinder Satellite Observations (CALIPSO) [*Winker et al.*, 2003] missions, provide accurate and precise cloud base and height information across a wide range of cloud optical thickness, but at horizontal scales of a few hundred meters and for a limited number of locations. Satellite-based passive observations measure cloud properties at scales from hundreds of meters to hundreds of kilometers and have daily global coverage. Aircraft-based remote sensing observations and in situ measurements of ice cloud properties have high spatial and temporal resolution but also have the smallest spatial and temporal coverage; these data will not be used in this analysis.

[6] Among the satellite-based cloud height observations, those derived from passive infrared (IR) are the more uncertain, but have the greatest global coverage and longest time span. These satellite products must be compared with more precise and accurate active lidar and radar-derived measurements for nonopaque clouds. In addition, the Aqua satellite provides a unique opportunity to intercompare simultaneous satellite-based cloud products from an IR imager, the Moderate Resolution Imaging Spectroradiometer (MODIS) [*King et al.*, 1992], and an IR/microwave (MW) sounder suite, the Atmospheric Infrared Sounder (AIRS) [*Aumann et al.*, 2003]/Advanced Microwave Sounding Unit (AMSU) with ground-based upward looking radar and lidar measurements at the Tropical West Pacific ARM sites. This comparison is especially important because the Visible Infrared Imager/Radiometer Suite (VIIRS) on future operational platforms, i.e., the National Polar-orbiting

Operational Environmental Satellite System (NPOESS) and NPOESS Preparatory Program (NPP), will not have the MODIS 15  $\mu\text{m}$  channels, and cloud height products may have to be derived in combination with the onboard Cross-track Infrared Sounder (CrIS)/Advanced Technology Microwave Sounder (ATMS) Sounder Suite (CrIMMS) [*Cunningham and Haas*, 2004].

[7] Cloud height is derived from IR  $\text{CO}_2$  temperature sounding channels, used in a technique called “ $\text{CO}_2$  slicing” [*Smith and Platt*, 1978, and references therein; *Menzel et al.*, 1983] where calculated radiances from an operational weather forecast model are differenced with observed radiances, and the height is derived from ratios of the differences. The largest error sources from  $\text{CO}_2$  slicing include those from the calculated radiances that have error contributions from spectroscopic parameters, and others that are needed to calculate radiances, like surface emissivity, and temperature and water vapor profiles. These errors are especially large near the surface but could affect cloud products several kilometers above the surface because of the relatively broad weighting functions of the MODIS temperature-sounding channels. In general, the  $\text{CO}_2$  slicing method is most accurate for high and opaque clouds, with increasing degradation in accuracy as cloud height and opacity decrease [*Wielicki and Coakley*, 1981]. Other studies have shown that an improvement in  $\text{CO}_2$  slicing-derived cloud top height ( $Z$ ) is observed when accounting for surface emissivity effects over land [*Zhang and Menzel*, 2002]; however, multilevel cloud cover was shown [*Baum and Wielicki*, 1994] to introduce errors in  $Z$ . More recent work by *Holz et al.* [2006] suggests that sorting  $\text{CO}_2$  slicing channels by optical depth to determine optimal channel pairs using high spectral resolution measurements improves  $Z$  retrievals for tenuous cirrus and reduces errors introduced by surface and atmospheric uncertainties.

[8] AIRS/AMSU uses a different approach called cloud clearing [*Chahine*, 1974; *Susskind et al.*, 2003]. The algorithms implemented in the Version 4 production software uses microwave (MW) sounding-derived temperature and water vapor profiles to predict clear sky IR radiances for a select set of channels. A linear combination of radiances from a  $3 \times 3$  array of adjacent AIRS footprints is used to infer the clear-sky radiance over the entire AIRS spectral range. The cloud-cleared AIRS radiances are used to retrieve  $T(z)$ ,  $q(z)$ ,  $\text{O}_3(z)$ , additional trace gases, and other atmospheric and surface properties. The cloud top height ( $Z_A$ ) and effective cloud fraction ( $f_A$ ) are derived by comparison of observed AIRS radiances to calculated ones. The  $f_A$  is a combination of spatial cloud fraction  $\times$  cloud emissivity. In this work we use  $f_A$  as a proxy for cloud opacity, not optical depth ( $\tau$ ), in order to describe the “thickness” of a given cloud. Although there is some relationship between  $f_A$  and  $\tau$ , it is not a 1–1 relationship. Some major sources of error in cloud clearing arise from errors in the temperature and water vapor profiles provided by AMSU, especially near the surface, and uncertainty in calculated radiances from surface sensing channels, especially over land. Singularities in the cloud-clearing algorithms occur when clouds are uniform across the  $3 \times 3$  array of AIRS footprints. The first source of error is especially problematic because of the failure of the MW-based Humidity Sounder from Brazil (HSB) and

interference in two of the AMSU temperature sounding channels (channel 7 is unusable).

[9] None of the results presented in this study use the HSB radiances, but *Fetzer et al.* [2006] have shown that biases of retrieved total precipitable water vapor are less than 5% before and after the loss of HSB in the tropics and subtropics (the area of focus in this study) outside of the dominant stratus regions. However, precision was lost with HSB, and its impact on retrieved quantities (including clouds) is an ongoing subject of research. The effective cloud fractions have an additional error arising from assumptions about the radiative properties of the clouds, that they are opaque and spectrally black (IR emissivity = 1). In the full IR/MW retrieval using AIRS/AMSU radiances (and not HSB), up to two levels of cloud top pressure ( $P_A$ ), cloud top temperature ( $T_A$ ), and nine effective cloud fractions ( $f_A$ ) per cloud layer are retrieved. If the retrieval defaults to a MW-only retrieval, only one  $f_A$  is reported for each cloud layer. In this work,  $P_A$  is converted to  $Z_A$  at the ARM tropical Western Pacific (TWP) sites using a typical TWP atmospheric profile with a scale height of 8 km.

[10] Since the launch of the Earth Observing System (EOS) Aura on July 15, 2004, the Microwave Limb Sounder (MLS) has joined the A-Train and made global, vertically resolved measurements for a wide array of gaseous species, along with temperature, geopotential height, and cloud ice water content (IWC). These observations are relevant for understanding stratospheric ozone chemistry, climate, and air pollution processes [*Waters et al.*, 2006]. The MLS observes limb thermal emission radiation at millimeter and submillimeter wavelengths at a spatial resolution of approximately 200 km  $\times$  7 km  $\times$  3 km (along track  $\times$  cross track  $\times$  vertical); a limb scan is made every 165 km along track for a global total of  $\sim 3500$  d $^{-1}$ . The MLS is designed to retrieve geophysical parameters (temperature and a number of chemical compositions) from measured spectral line radiance features on the basis of optimal estimation [*Livesey et al.*, 2006] with Tikhonov regularization applied. The retrieved parameters, or state vectors, consist of vertical profiles on fixed pressure surfaces having a semiglobal (82°N–82°S) coverage. MLS cloud measurements are divided into two steps. First, cloud induced radiances ( $\Delta T_{\text{cir}}$ ) are obtained by calculating the difference between the measured radiance and modeled clear-sky radiance using the retrieved atmospheric state. Second, high-altitude (215–68 hPa) cloud ice water contents (IWC) are retrieved from  $\Delta T_{\text{cir}}$  using modeled  $\Delta T_{\text{cir}}$ –IWC relations [*Wu et al.*, 2006]. The IWC data used in this research are from the MLS IWC version 1.51-CLD02 data set described by J. H. Jiang et al. (Ice clouds in the upper troposphere as observed by Microwave Limb Sounder on Aura satellite, submitted to *Journal of Geophysical Research*, 2006). The vertical profiles of IWCs are represented by equally spaced increments in log pressure, i.e., at 215, 178, 147, 121, 100, 83 and 68 hPa pressure levels.

[11] The primary objective of this study is to assess how well AIRS and MLS determine cloud altitude in the upper troposphere, emphasizing the tropical Western Pacific warm pool region. In section 2 we point out the complexities of comparing surface-based ARM point measurements to those made from satellite platforms like AIRS. The averaging methods of the ARM observations for replicating the

horizontal scale of the satellite measurement are discussed. In section 3 the AIRS- and ARM-derived  $Z$  are compared, exploiting the different sensitivities of the micropulse lidar and millimeter wave cloud radar to thin and thick cloud. The statistical significance of the results is addressed, and comparisons are made to previously published work. In section 4 we compare AIRS- and MLS-derived  $P_{\text{CLD}}$ , and show the agreement is conditional upon the opacity of the cloud, as well as the MLS tangent altitude. In section 5 we summarize the results.

## 2. ARM and AIRS Intercomparisons

[12] In this work we examine the uncertainties in the retrieved  $Z_A$ , emphasizing the upper level  $Z_A$  because of its relevance to upper tropospheric cloud cover, using the active sensor measurements at the ARM TWP program sites at Manus and Nauru islands, located at 2°S 147.5°E, and 0.5°S 167°E, respectively [*Ackerman and Stokes*, 2003; *Mather*, 2005]. AIRS is compared to the Active Remotely-Sensed Cloud Locations (ARSCL) value-added product (VAP) [*Clothiaux et al.*, 2000]. The ARSCL VAP combines information from micropulse lidars (MPL), microwave radiometers, millimeter wave cloud radars (MMCR), and laser ceilometers into a time series of cloud tops and bases, allowing for a comprehensive database throughout the range of cloud height in the troposphere, optical depth ( $\tau$ ), and hydrometeor characteristics. For the time period of coincident measurements made by AIRS and the ARM sites (April–September 2003), the MPL was not operational at Manus Island; likewise, the MMCR was not operational at Nauru Island. As will be shown below, comparing  $Z_A$  to the  $Z_{\text{ARM}}$  derived from the ARM instruments indicates the usefulness of  $Z_A$  for almost the entire range of  $f_A$ .

[13] It is important to consider the relative sensitivity of the ARSCL cloud product to different cloud types. The sensitivities of the MPL and MMCR, two of the primary instruments used in generating the ARSCL cloud boundary product, are very different for any given cloud. The MPL is sensitive to tenuous cirrus clouds because its operating wavelength is similar in size to small ice particles frequently found in such clouds. The MMCR is sensitive to large particles because the reflectivity is proportional to the sixth power of particle size ( $\sim D^6$ ) [e.g., *Liou*, 2002], and can sound through most thick cloud cover. The “penetration” optical depth of a typical lidar (e.g., the MPL) is roughly 2.0–3.0 [e.g., *Sassen*, 1991; *Comstock et al.*, 2002]. In the case of the MMCR, it is capable of penetrating through much thicker clouds, except in those cases where precipitation obscures the radar beam [*Clothiaux et al.*, 2000]. The  $Z_A$  retrievals that will be compared against the ARM ARSCL product are representative of a “radiative”  $Z_A$  and not necessarily a “physical”  $Z_A$ . Thus, in the case of some thick clouds, the MMCR will better determine  $Z_{\text{ARM}}$  than the MPL because it can penetrate the top of the cloud. On the other hand, since the MMCR is not as sensitive to very small hydrometeors, which are common at the tops of ice clouds [*Garrett et al.*, 2003], the  $Z_{\text{ARM}}$  determined by the MMCR may still be significantly different than  $Z_A$ .

[14] In this study we compare an essentially instantaneous, downward looking, passive measurement of clouds from space at the horizontal scale of 45 km and greater with

an active upward looking, surface-based, point measurement [Kahn *et al.*, 2005]. Much of the discrepancy between independent measurements of  $Z$  is attributable to the fundamental heterogeneity of cloud properties over the scenes compared [see Stubenrauch *et al.*, 1999]. If cloud spatial heterogeneity effects are to be eliminated in a comparison of two independent observations, homogeneous and static cloud properties over the spatial and temporal scales spanned by the two observations are necessary. However, observed cloud fields rarely provide such opportunities [Horváth and Davies, 2004; Chylek and Borel, 2004]; thus comparisons must be made with less idealized cases.

[15] A useful comparison approach is to consider the surface point observations over a period of time assuming a mean wind speed, giving an advective spatial scale of the satellite footprint. A discussion on the pitfalls in such an analysis can be found in work by Kahn *et al.* [2005]; these are related to cloud heterogeneity coupling to 3-D wind speed and direction gradients, and the evolving nature of the physical properties of clouds. Clouds are highly heterogeneous over the  $\sim 45$  km scale of the AMSU footprint considered here [see Cahalan and Joseph, 1989]. The satellite pixel is rarely centered on the surface point observation, further complicating the comparison. For further reference on instrument and algorithm-related sources of discrepancy see Cracknell [1998].

[16] Given the complexity of cloud fields, we examine several ways to estimate the spatial mean from time-varying observations at a point. Taking into account the variability of wind speed, three different time-averaging procedures were applied to the ARSCL data: (1)  $Z_{\text{ARM}}$  is averaged over the 6 min period of the coincident AIRS granule  $\pm 24$  min for a total of 54 min, (2)  $\pm 60$  min for a total of 126 min, and (3)  $\pm 90$  min for a total of 186 min. The method used here does not take into account the wind speeds for individual cases. For the nominal AMSU footprint of 45 km, the three time averages correspond to wind speeds of 12.3, 5.3, and  $3.6 \text{ m s}^{-1}$ , respectively. For examples of using wind profiler measurements in individual comparisons of  $Z_{\text{ARM}}$  and MODIS-derived  $Z$  see Mace *et al.* [2005].

[17] The  $Z_{\text{ARM}}$  within each time window is derived three different ways: (1) by an average of the highest ARSCL cloud top values for each observation time, ignoring clear sky ( $Z_{\text{ARM}}^{\text{AVG}}$ ), (2) by developing histograms of all ARSCL cloud top values in 0.5 km bins within the time window, then choosing the highest peak of “significance” in the distribution ( $Z_{\text{ARM}}^{\text{HIST}}$ ), and (3) by choosing the highest value of cloud top height in the time window ( $Z_{\text{ARM}}^{\text{MAX}}$ ). For  $Z_{\text{ARM}}^{\text{HIST}}$  we define the height by first assigning the ARM  $Z$  observation to height bins as specified in method 2, then locating all peaks in the frequency of occurrence, and finally identifying the peak with the highest altitude. If the number of cases in the highest peak is greater than approximately 10% of the value of the maximum peak (in the case of multiple peaks), it is used as  $Z_{\text{ARM}}^{\text{HIST}}$ . Otherwise the next highest peak with the greatest frequency of occurrence is used. By using different averaging methods, insight is gained with regard to the sensitivity of the agreement of AIRS and ARM  $Z$  on the basis of the choice of the averaging method.

[18] Since  $Z_{\text{AIRS}}$  is representative of a “cloud top,” using the highest peak is physically justified. However,  $Z_{\text{ARM}}^{\text{HIST}}$

may be affected significantly by broken cloud cover within the AMSU FOV; the vertical cross section of ARSCL observations is not necessarily a representative subsample for the entire AMSU FOV. Additionally, satellite  $\text{CO}_2$  slicing-derived  $Z$  for deep and tenuous cirrus layers often place  $Z$  well below the  $Z$  observed by lidar [Holz *et al.*, 2006]. Horizontal sampling errors using ARM measurements are essentially random, while sampling errors due to the respective sensitivities of the MPL and MMCR tend to be systematic. Additionally, errors due to limitations in the  $\text{CO}_2$  slicing method tend to be systematic (e.g., the radiative  $Z$  is usually below the physical  $Z$ ). Therefore the errors that impact comparisons of  $Z_{\text{AIRS}}$  and  $Z_{\text{ARM}}$  are a combination of random and systematic sources.

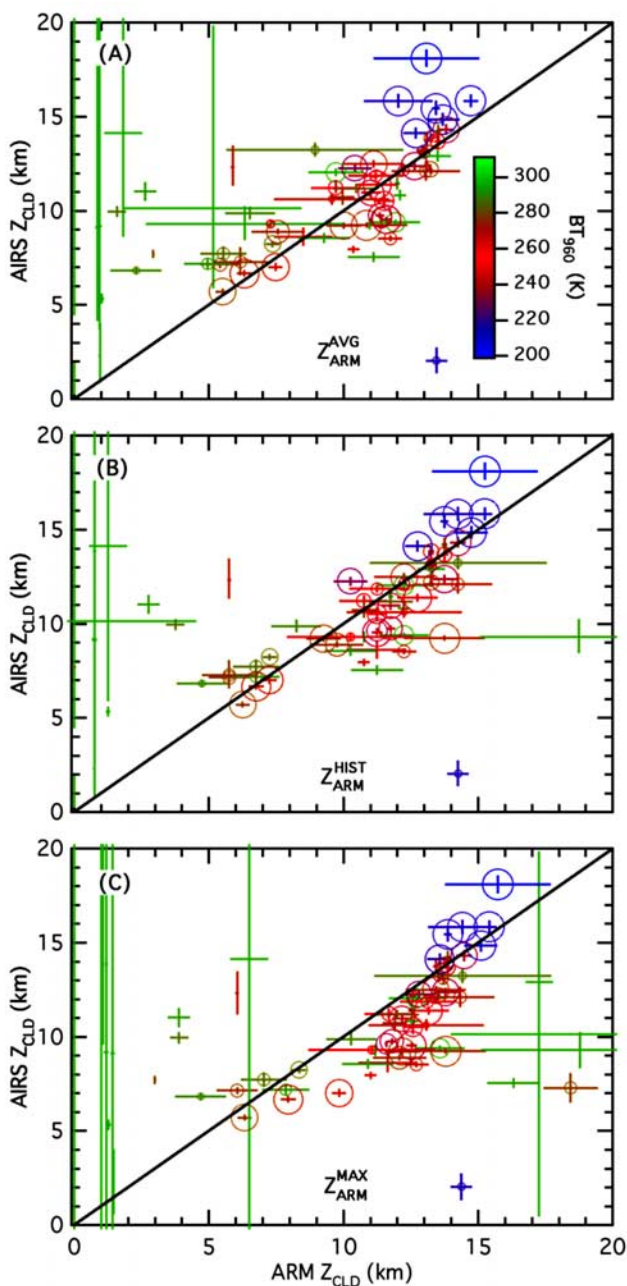
[19] Next, we compare AIRS and ARM-derived  $Z$  for Manus and Nauru islands. For the time period considered (April–September 2003) the MPL was not in operation at Manus; likewise the MMCR was not in operation at Nauru. As a result, optically thick clouds are better represented at Manus, and tenuous cirrus is better characterized at Nauru. Then we address the statistical significance of the results and compare them to other cloud height data sets.

### 3. Results

#### 3.1. Manus Island

[20] Results for the time average of  $\pm 24$  min and for the three  $Z_{\text{ARM}}$  methods for nighttime at Manus Island are presented in Figure 1, and are summarized in four main points. First, note  $Z_{\text{ARM}}^{\text{AVG}}$  is lower for the high and optically thick clouds (large circles). This effect has been discussed elsewhere and is an apparent consequence of the attenuation of the millimeter wave cloud radar beam due to precipitation [Hollars *et al.*, 2004]. In the  $Z_{\text{ARM}}^{\text{HIST}}$  and  $Z_{\text{ARM}}^{\text{MAX}}$  cases this effect is reduced as expected since they are less affected by occasional precipitation-induced outliers. Second, in the  $Z_{\text{ARM}}^{\text{AVG}}$  case, many of the high and optically thin clouds are biased low compared to  $Z_{\text{A}}$ . In the  $Z_{\text{ARM}}^{\text{AVG}}$  approach all clouds detected in the ARSCL (ARSCLmmcr at Manus Is.) product are used, including low-level trade wind cumulus. Thus a low bias is expected because there are instances in a time window when trade wind cumulus is the highest cloud. The  $Z_{\text{ARM}}^{\text{HIST}}$  and  $Z_{\text{ARM}}^{\text{MAX}}$  approaches show many of these cases to be in better agreement. Since the ARM measurement samples a point in horizontal space and a vertical plane over time (assuming a constant wind speed), broken cloud scenes may not be observed by ARM when detected in the AMSU FOV, further explaining why some cirrus cases are not observed in the ARSCLmmcr product.

[21] Third, note the two clusters of cloud: one near 6–8 km, and the second from 9–15 km. They are consistent with the altitudes of peak frequency of tropical clouds [Comstock and Jakob, 2004; Hollars *et al.*, 2004]. Fourth,  $Z_{\text{ARM}}^{\text{MAX}}$  is biased high for clouds in the 9–12 km range. This effect is seen in an independent comparison of GOES  $Z$  with active lidar and cloud radar measurements [Hawkinson *et al.*, 2005]. Many of these highest clouds have  $f$  substantially  $< 1$  and are in better agreement in the  $Z_{\text{ARM}}^{\text{HIST}}$  case. This supports the notion that AIRS may not always see the top of the highest cloud in a scene that is broken, multilayered, or semitransparent, but may place  $Z_{\text{AIRS}}$  somewhat lower [Sherwood *et al.*, 2004; Holz *et al.*, 2006].



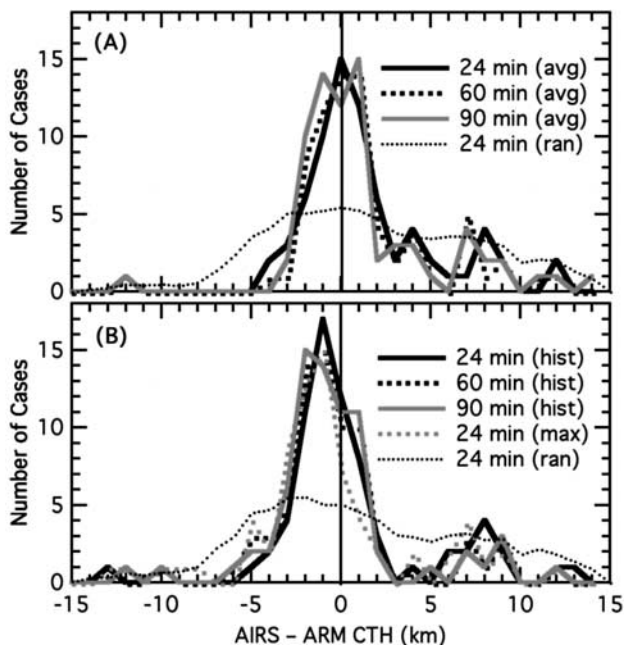
**Figure 1.** Comparisons of 78 AIRS and ARM cloud top height ( $Z_{CLD}$ ) coincidences at Manus Island for nighttime granules. Shown are AIRS and ARM  $Z_{CLD}$  using (a) the average (AVG) approach, (b) the histogram (HIST) approach, and (c) the maximum (MAX) approach; see text for details. Circle diameters are linearly proportional to AIRS upper level  $f_A$  between 0.0 (smallest) and 1.0 (largest). The color scale represents the  $960\text{ cm}^{-1}$  BT averaged over the AMSU footprint scale. Error bars for AIRS  $Z_{CLD}$  are the AIRS standard L2 retrieval, and for the ARM  $Z_{CLD}$  they are the  $\sigma$  level of  $Z_{CLD}$  variability over the 54 min time window.

[22] The vertical and horizontal bars in Figure 1 for  $Z_A$  and  $Z_{ARM}$  represent two types of variabilities. For AIRS (the vertical bars), they represent one standard deviation ( $\sigma$ ) of variability in  $Z_A$  from a plane-parallel radiative transfer

calculation, taken from the AIRS L2 standard product; these values tend to be inversely proportional of  $f_A$  [Wielicki and Coakley, 1981]. For ARSCLmmcr (the horizontal bars) they represent the  $\sigma$  variability in  $Z_{ARM}$  within a given time window. Essentially, the length of the bars on  $Z_{ARM}$  is a measure of the heterogeneity of  $Z_{ARM}$ . As a result, we do not expect the uncertainties to intersect the 1–1 line for every case, as is seen in Figure 1. On the other hand, there is a tendency for the uncertainties to be smaller when the agreement in  $Z$  is closer.

[23] The distribution of the differences between  $Z_A$  and  $Z_{ARM}$  is shown in Figure 2. The agreement for the three time windows used is nearly constant, suggesting little sensitivity to the choice of the time window used to calculate  $Z_{ARM}$  at Manus. In the  $Z_{ARM}^{AVG}$  approach, the peak frequency in the agreement is located near  $\text{AIRS} - \text{ARM} \approx 0$  km, with a tail in the distribution for  $\text{AIRS} - \text{ARM} > 0$ ; this effect is primarily caused by “missed detections” by the ARM measurements, as well as occasional frequent occurrences of cumulus clouds that bias  $Z_{ARM}^{AVG}$  low, as shown by visual inspection. The  $Z_{ARM}^{HIST}$  approach has a peak frequency near  $\text{AIRS} - \text{ARM} \approx -1$  km. The  $Z_{ARM}^{MAX}$  approach has a similar peak but a slightly more narrow distribution than  $Z_{ARM}^{AVG}$  and  $Z_{ARM}^{HIST}$ .

[24] Table 1 summarizes the bias, standard deviation ( $\sigma$ ), and statistical significance of the difference between coincident AIRS- and ARM-derived cloud height. A subset of these cases is presented in graphical form in Figure 3. The bias and  $\sigma$  of the difference in  $Z_A$  and  $Z_{ARM}$  are a strong



**Figure 2.** Distributions of differences in  $Z_{CLD}$  between AIRS and ARM measurements for (a) AIRS – ARM AVG  $Z_{CLD}$  and (b) AIRS – ARM HIST  $Z_{CLD}$  for the three time windows. Superimposed is AIRS – ARM MAX  $Z_{CLD}$  for the  $\pm 24$  min period, as well as an example of a “randomly generated” agreement; see text for details on this experiment. All histograms are for the same 78 coincident observations presented in Figure 1.

**Table 1.** Bias and  $1 - \sigma$  Variability for  $Z_A - Z_{ARM}$ <sup>a</sup>

Location/Time	Time, min	Height Method	$0. \leq f < 0.05$	$.05 \leq f < 0.15$	$.15 \leq f < 0.5$	$.5 \leq f < 0.85$	$.85 \leq f < 1.0$
Manus/Night	–	–	$N = 13$	$N = 9$	$N = 21$	$N = 16$	$N = 16$
	54	AVG	$7.2 \pm 7.0$	$2.1 \pm 3.4$	$0.4 \pm 3.7$	$-0.1 \pm 1.5$	$0.7 \pm 1.8$
	126	AVG	$7.1 \pm 6.5$	$1.8 \pm 3.2$	$0.5 \pm 3.6$	$-0.3 \pm 1.2$	$0.7 \pm 2.0$
	186	AVG	$7.0 \pm 6.5$	$1.9 \pm 3.0$	$0.4 \pm 3.6$	$-0.4 \pm 1.3$	$0.6 \pm 2.0$
	54	HIST	$7.1 \pm 7.3$	$1.1 \pm 5.1$	$-0.9 \pm 3.4$	$-0.5 \pm 1.3$	$-0.1 \pm 1.7$
	126	HIST	$4.9 \pm 7.4$	$-0.5 \pm 4.5$	$-0.9 \pm 3.4$	$-1.2 \pm 1.0$	$-0.3 \pm 2.0$
	186	HIST	$4.7 \pm 7.5$	$-0.4 \pm 4.1$	$-1.0 \pm 3.3$	$-1.2 \pm 1.0$	$-0.2 \pm 2.0$
	54	MAX	$5.3 \pm 8.4$	$0.6 \pm 4.9$	$-2.2 \pm 4.0$	$-1.4 \pm 1.3$	$-0.8 \pm 1.9$
	–	–	$N = 21$	$N = 12$	$N = 16$	$N = 12$	$N = 16$
Manus/Day	54	AVG	$7.6 \pm 5.6$	$6.3 \pm 5.8$	$1.2 \pm 4.2$	$0.2 \pm 2.3$	$1.1 \pm 1.6$
	126	AVG	$7.8 \pm 5.6$	$4.5 \pm 4.9$	$1.3 \pm 3.9$	$0.5 \pm 2.3$	$1.3 \pm 1.6$
	186	AVG	$9.0 \pm 5.0$	$4.4 \pm 4.7$	$1.5 \pm 3.8$	$0.7 \pm 2.4$	$1.6 \pm 1.7$
	54	HIST	$6.4 \pm 8.8$	$5.4 \pm 6.1$	$-0.4 \pm 3.7$	$-0.1 \pm 2.7$	$0.5 \pm 1.6$
	126	HIST	$3.7 \pm 9.5$	$-1.0 \pm 8.3$	$-0.7 \pm 3.8$	$-1.1 \pm 2.1$	$0.4 \pm 1.6$
	186	HIST	$1.5 \pm 7.8$	$-1.5 \pm 8.5$	$-0.8 \pm 3.8$	$-1.1 \pm 2.1$	$0.4 \pm 1.5$
	54	MAX	$4.8 \pm 8.3$	$3.1 \pm 8.1$	$-0.7 \pm 3.8$	$-1.5 \pm 1.7$	$-0.2 \pm 1.4$
	–	–	$N = 32$	$N = 20$	–	–	–
	Nauru/Night	54	AVG	$8.2 \pm 6.1$	<b><math>2.1 \pm 3.9</math></b>	–	–
126		AVG	$7.1 \pm 6.1$	<b><math>1.9 \pm 3.2</math></b>	–	–	–
186		AVG	$6.3 \pm 5.4$	<b><math>1.9 \pm 3.0</math></b>	–	–	–
54		HIST	$7.4 \pm 7.3$	<b><math>0.3 \pm 4.1</math></b>	–	–	–
126		HIST	$5.3 \pm 7.8$	<b><math>-0.7 \pm 3.7</math></b>	–	–	–
186		HIST	$3.0 \pm 7.3$	<b><math>-1.1 \pm 3.1</math></b>	–	–	–
54		MAX	$7.0 \pm 7.5$	<b><math>-0.5 \pm 4.5</math></b>	–	–	–

<sup>a</sup>Values are given in km. Superimposed in italic (bold) are the  $p$  values for a one-sided hypothesis test for the 5% (1%) significance level where we reject the hypothesis that considers the agreement between  $Z_A - Z_{ARM}$  to be due to random chance. There are three sets of observations: (1) Manus Island during daytime, (2) Manus Island during nighttime, and (3) Nauru Island during nighttime. The number of samples ( $N$ ) is listed above each set of observations for each category of  $f_A$ .

function of  $f_A$ . For the nighttime Manus Island cases, the bias ranges from several kilometers for  $f_A < 0.15$  to less than 1 km for the clouds approaching  $f_A \sim 1.0$ . In the case of  $f_A < 0.15$ , much of the bias is likely explained by missed cirrus detections at the Manus site using the cloud radar. Within each category of  $f_A$ , the bias can vary by about 1–2 km when using different techniques to define  $Z_{ARM}$ . As in the case of the bias, the largest  $\sigma$  variability is found for the thinnest clouds, and reduces to 1–2 km for the thicker clouds. This is likely related in part to the improved sensitivity of CO<sub>2</sub> slicing in higher and optically thicker clouds, and a more spatially uniform cloud height for deep convective cloud systems.

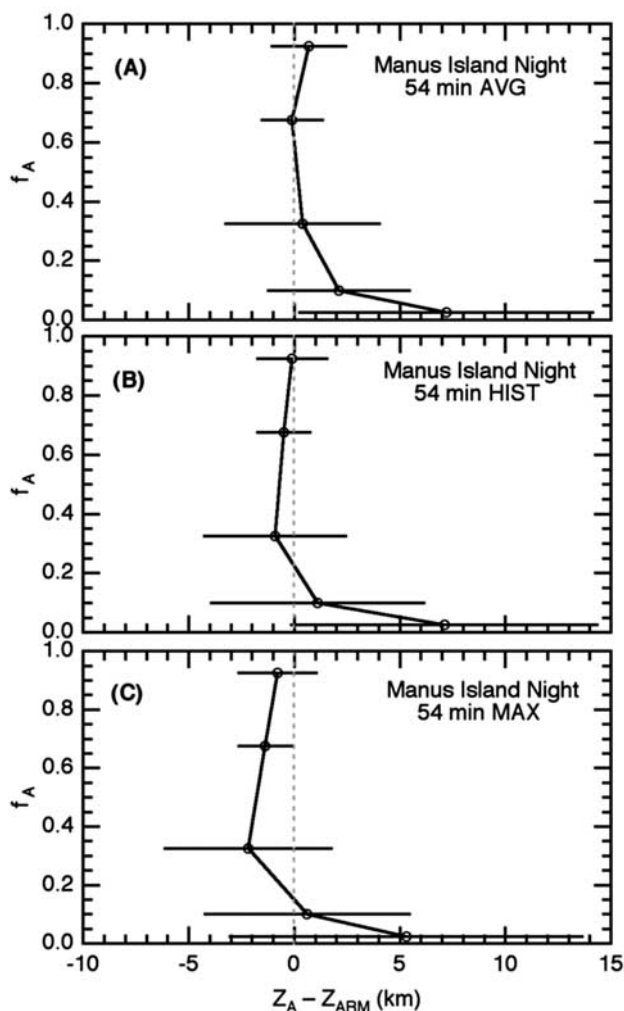
[25] For the nighttime Manus Island cases shown in Table 1, all  $Z_{ARM}$  averaging methods for  $f_A > 0.5$  agree at the 0% significance level using a  $p$  test for statistical significance (see Appendix A for a detailed discussion of the  $p$  test). For an arbitrary value of significance, say 5%, this indicates that less than 5% of thousands of “randomized” pairs explain the observed agreement. For  $0.15 < f_A < 0.5$ , all cases agree at the 5% significance level or less, although the  $Z_{ARM}^{HIST}$  cases agree at the 1% significance level. This may indicate the histogram approach is most appropriate for tenuous cirrus, since AIRS is sensitive to thin cirrus altitudes. For  $f_A < 0.15$ , all of the cases fail the  $p$  test, except for the two longest time windows using  $Z_{ARM}^{AVG}$ , which pass at the 5% significance level. The results of the  $p$  test are consistent with the expected accuracy of  $Z_A$ .

[26] Figure 4 shows the agreement for the daytime coincident measurements. Fewer cases of cloud cover near 6–8 km are noted, and there is a higher number of opaque clouds than at nighttime. Many of the issues described in Figure 1 apply to Figure 4: a few deep convective clouds

agree better for  $Z_{ARM}^{HIST}$  when compared to  $Z_{ARM}^{AVG}$ , some of the thin cirrus cases come into better agreement for  $Z_{ARM}^{HIST}$  and  $Z_{ARM}^{MAX}$  when compared to  $Z_{ARM}^{AVG}$ , and the level of disagreement is seen to increase slightly from 9–12 km for  $Z_{ARM}^{MAX}$ . Note the two outliers in the lower right of each plot in Figure 4; the AIRS/AMSU microwave-only retrievals are contaminated by precipitation in these cases, confirmed by inspection of the ARSCLmmcr data. This demonstrates that caution must be used when using  $Z_A$  in precipitating clouds.

[27] In Figure 5 the distribution of agreement is qualitatively similar to Figure 2, although there is a reduction in the difference between the different methods of  $Z_{ARM}^{HIST}$  compared to Figure 2. Additionally, the width of the distribution in Figure 5 is slightly larger than that of Figure 2, implying slightly worse agreement between AIRS and ARSCLmmcr during daytime; this behavior is noted in the discussion of Table 1 as well.

[28] As a whole, the daytime and nighttime cases at Manus compare reasonably well to each other in Figure 5 and Table 1 with regard to bias,  $\sigma$ , and statistical significance tests, with a few notable exceptions. For  $f_A > 0.85$ , the agreement is not significant at the 0% level and, for the two longer  $Z_{ARM}^{HIST}$  time windows, they do not pass the 5% level. If the two outlying AIRS retrievals in Figure 4 are removed, all cases for  $f_A > 0.85$  pass at the 0% significance level (shown in Table 1). The two outliers are contaminated by precipitation, which is confirmed upon inspection of the Manus ARSCLmmcr product. The AIRS L2 quality flags are discussed by *Susskind et al.* [2006]. However, they are not used in this work to remove precipitating clouds since we are validating the entire range of cloud opacity. At nighttime two of the  $Z_{ARM}^{AVG}$  cases for  $0.05 < f_A < 0.15$  pass at the 5% significance level; for the daytime cases, this is not



**Figure 3.** AIRS – ARM AVG  $Z_{\text{CLD}}$  biases and  $\sigma$  variability as a function of  $f_A$  intervals. All observations are for Manus Island at nighttime. ARM observations are determined by the (a) AVG, (b) HIST, and (c) MAX approaches. The biases and  $\sigma$  variability shown here, and for Nauru Island, are summarized in Table 1.

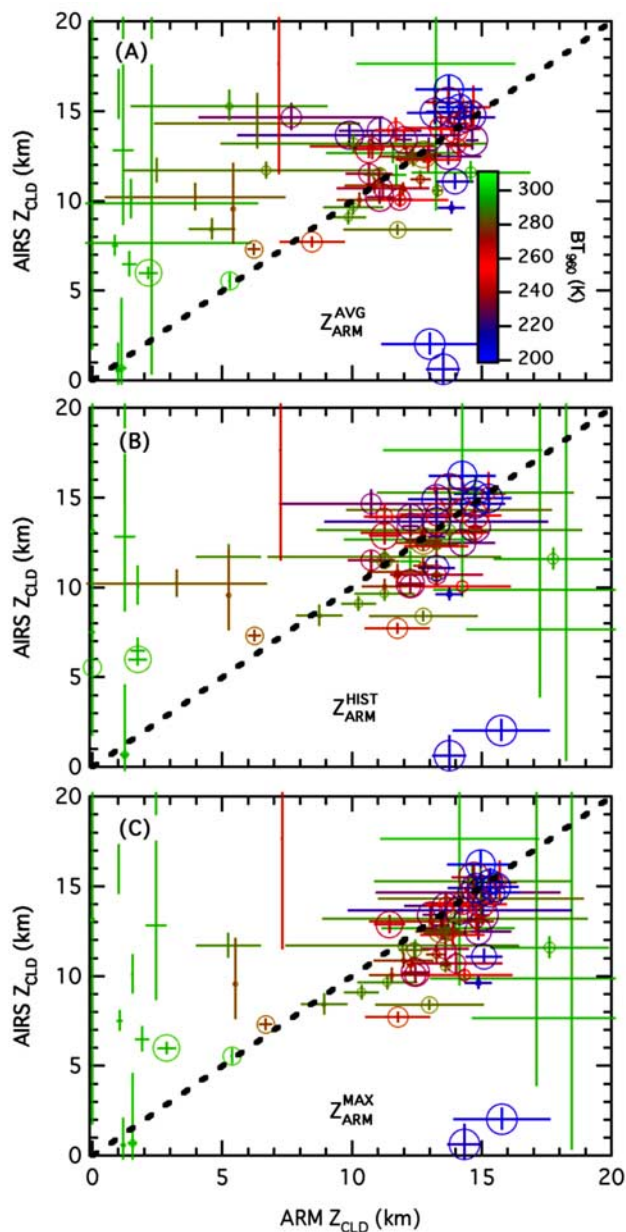
longer the case. The bias and variability increase substantially for this range of  $f_A$  in the daytime compared to nighttime. Diurnal effects can be attributed to the small sample size, to differences in diurnal cloud amount, or systematic diurnal biases in the retrieval algorithms. An extended period of coincident observations will help address this question, and is the subject of future research.

[29] The results for Manus Island summarized in Table 1 indicate that the agreement there in  $Z$  for the thin cirrus clouds ( $f_A < 0.15$ ) is no better or, perhaps worse, than what would be expected of randomness. The cloud radar does not detect much of the high and thin cirrus that is ubiquitous throughout the tropical upper troposphere [Comstock et al., 2002]. As a result we expect that the  $f_A < 0.15$  cases at Manus fail the  $p$  test. During April–September 2003 the micropulse lidar was in operation at Nauru Island (with the cloud radar inactive), and is the basis of  $Z_{\text{ARM}}$ . We use

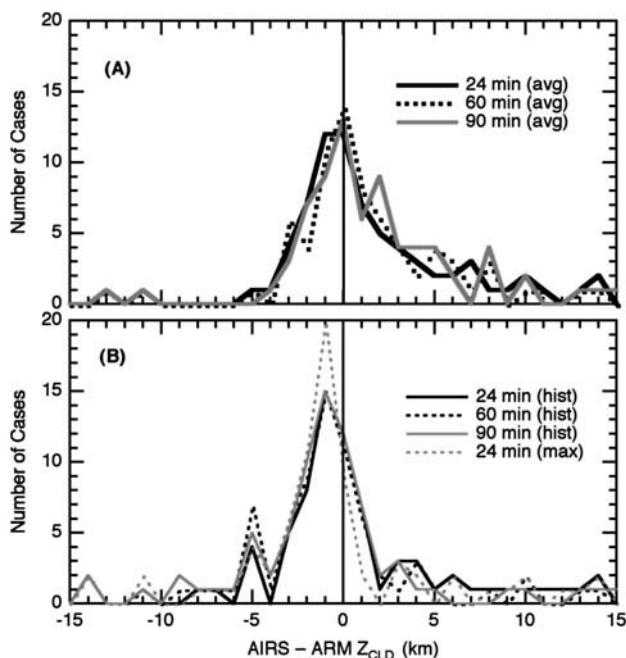
the coincident AIRS and ARM measurements during this time period to explore the accuracy of  $Z_A$  for thin cirrus clouds with  $f_A \leq 0.15$ .

### 3.2. Nauru Island

[30] In Figure 6 we show  $Z_A$  and  $Z_{\text{ARM}}$  for the Nauru ARSCL (ARSCLmpl for Nauru Is.) at nighttime. One of the most obvious differences between Figures 1, 4, and 6 is the size of the estimated horizontal and vertical standard deviations. In the case of  $Z_{\text{ARM}}$ , the lidar appears to capture more layers of cloud than the radar alone in the  $f_A \leq 0.15$  cases. In addition, the frequent occurrence of near-surface cumulus clouds helps to increase the size of the horizontal bars emphasizing ARM variability. For  $Z_A$  the variability is



**Figure 4.** As in Figure 1 but for coincident daytime AIRS granules at the Manus Island site.



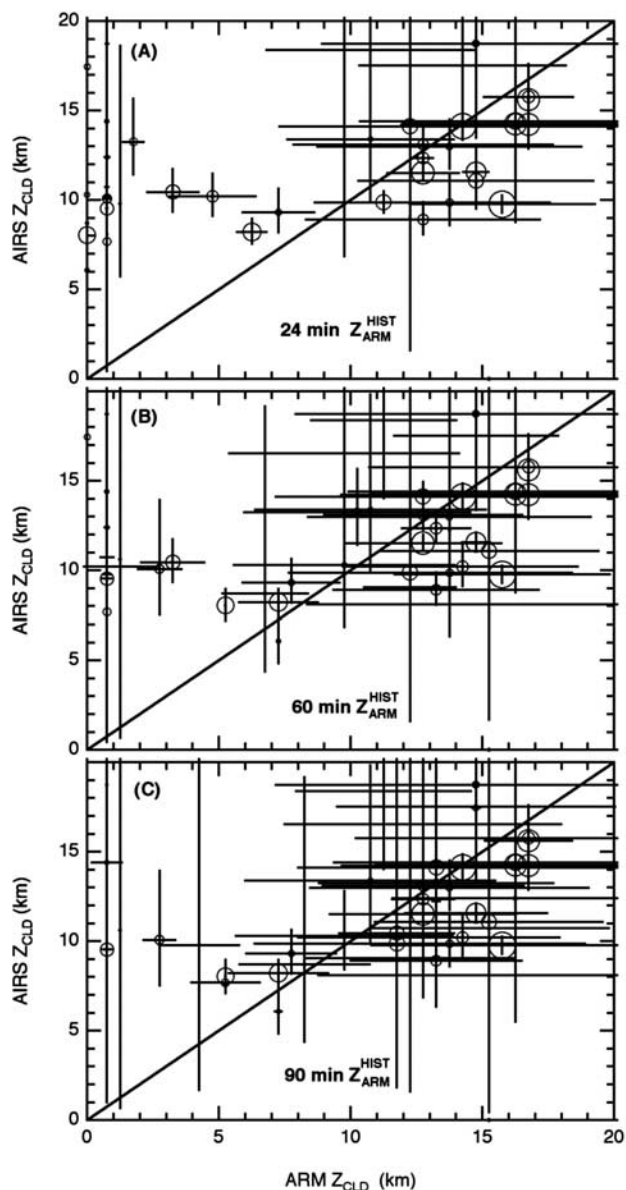
**Figure 5.** As in Figure 2 but for coincident daytime AIRS granules at the Manus Island site with no “randomized” distribution.

similar to the cases of  $f_A < 0.15$  in Figures 1 and 4. As a whole, the variability decreases as  $f_A$  increases. In Figure 6 the results for  $Z_{ARM}^{HIST}$  is shown using the three time window averages. The agreement depends on the length of the time window, unlike what is observed at Manus. A higher number of the thinnest cirrus cases come into agreement (within the  $\sigma$  bars) as the time window lengthens, and many fewer “missed” detections by the ARM site are noted for the longest time window. Many of the “missed” detections are due to limited horizontal sampling by the MPL. Manual inspection of coincident 1 km MODIS 11  $\mu\text{m}$  IR imagery for cases with the biggest AIRS – ARM  $Z$  differences showed that portions of the AIRS FOV contain cloud in many of these cases, while the ARM site remained clear. However, in a few of these cases, confirming horizontal sampling as the source of discrepancy using MODIS imagery was inconclusive.

[31] Another interesting feature shown by Figure 7 is that the peak in  $Z_A$  is roughly two km lower than the  $Z_{ARM}$  peak. This is apparently due to the prevalence of very thin and patchy cirrus, some with multiple layers, at Nauru. The AIRS retrieval therefore places  $Z_A$  lower than what is seen at Nauru. This altitude can be substantially below the cloud top in tenuous cirrus clouds. Note the change in the behavior of the distribution as the time window increases (Figure 7a). As the length of the time window increases, the distribution narrows, and the peak near  $Z_A - Z_{ARM} = 7$  decreases in magnitude. Most of the cases that cause the change in the distribution are for  $f_A < 0.05$ . In the discussion of Table 1 above, we note that the statistical significance of the agreement for these cases fails the  $p$  test. However, as the time window increases in length, many cases have improved agreement with a lower bias; this behavior is

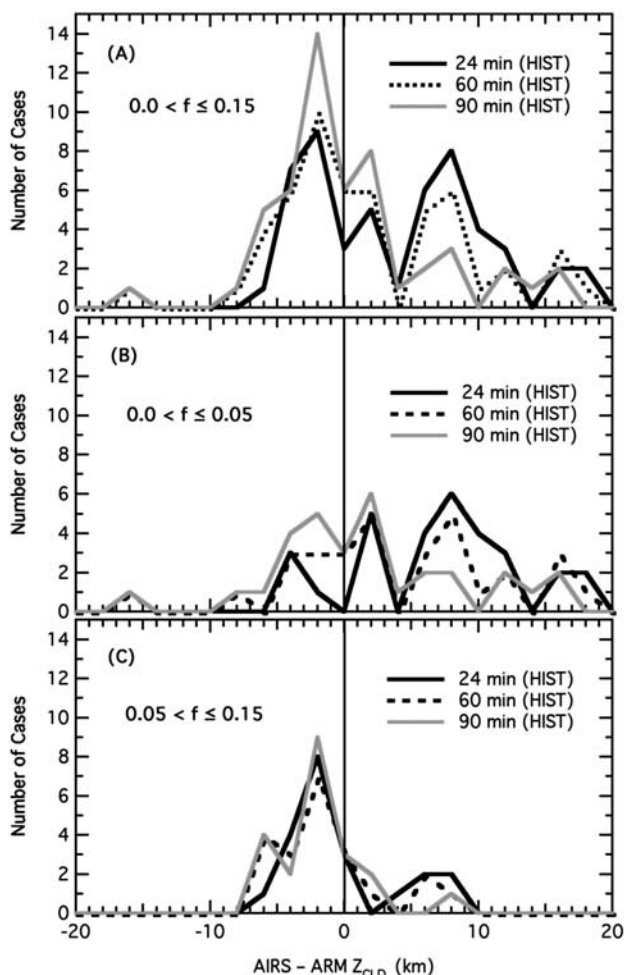
consistent with the patchy nature of cirrus in these cases at low  $f_A$ . A larger time window is more likely to capture a portion of thin cirrus. It should be pointed out that  $f_A = 0.05$  should not necessarily be used as an absolute “cutoff” for validated retrievals. It is possible that a threshold for a statistically significant agreement at the 0–5% level could be found at a lower value of  $f_A$ .

[32] With respect to the statistical significance of  $Z_A - Z_{ARM}$  at Nauru Island, the agreement is significant at the 0% level for the cases with  $0.05 < f_A < 0.15$ , shown in Table 1.



**Figure 6.** As in Figure 1 but for the coincident nighttime AIRS granules at the ARM Nauru Island site. The range of  $f$  is limited to 0.0–0.15 (increasing diameter of circle indicates increasing  $f$ ); coincidences with  $f > 0.15$  are not included here. The three plots include the three different time-averaging periods; the AVG and MAX cases are not shown. The error bars in the horizontal and vertical follow those presented in Figure 1.

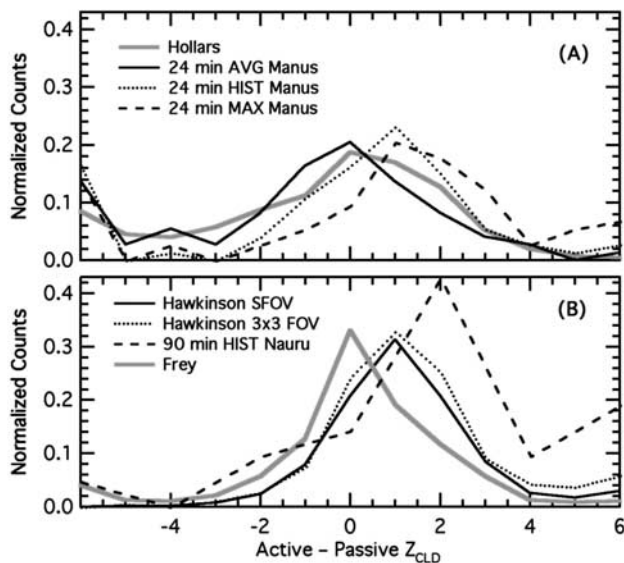




**Figure 7.** As in Figure 2 but for three time windows for the HIST case only: (a) all cases with  $0.0 < f \leq 0.15$ , (b) the subset of cases with  $0.0 < f \leq 0.05$ , and (c) the subset of cases with  $0.05 < f \leq 0.15$ .

This is a vast improvement over the statistical significance at Manus Island for the same range of  $f_A$ . The bias and  $\sigma$  variability is approximately  $-1.1$  to  $2.1 \text{ km} \pm 3.0$  to  $4.5 \text{ km}$ ; this compares to  $-1.5$  to  $6.3 \pm 3.0$  to  $8.5 \text{ km}$  at Manus. Recall from Table 1 that the range of values results from using different approaches to determine  $Z_{ARM}$  and the magnitude of  $f_A$ . We attribute the better agreement at Nauru to the differences in the sensitivity of the lidar to thin cirrus clouds, consistent with previously published results [Comstock et al., 2002]. The Nauru comparison highlights the sensitivity of the AIRS upper level cloud top pressure product to tenuous cirrus clouds. A statistically meaningful sampling rate requires a larger set of cases in order to reduce the width of the  $f_A$  bins and keep the number of cases in each bin large enough so that a representative subsample of observed cloud variability is obtained. CloudSat and CALIPSO will provide a much larger set of collocated observations, and they will mostly eliminate cloud evolution as a means of disagreement because of their close time coincidence to AIRS.

[33] We summarize the results at Manus and Nauru islands in Figure 8. The frequency distribution of  $Z_A - Z_{ARM}$  for the radar cases at Manus compare favorably to the results of Hollars et al. [2004], who relate AMSR-2 geostationary satellite-derived  $Z$  to  $Z_{ARM}$  at Manus. The shapes of the distributions are very similar, including the tails, although the peak frequency is quite sensitive to the method of defining  $Z_{ARM}$ . At Nauru the bias in peak frequency in this study is higher than in work by Frey et al. [1999] and Hawkinson et al. [2005]. Frey et al. [1999] compare the MODIS Airborne Simulator (MAS) to coincident observations from a lidar on the same aircraft platform. Since both are downward looking instruments, different sensitivities are expected to those from upward looking active instruments, as are the ARM sites. Additionally, the pixel size of comparison of Frey et al. [1999] is aggregated to roughly  $2 \text{ km}$ , which is much smaller than the nominal footprint size of  $45 \text{ km}$  considered here. Hawkinson et al. [2005] derive  $Z$  from Geostationary Operational Environmental Satellite (GOES) radiances and is compared to a combination of radar- and lidar-derived  $Z$ . As in the case of Frey et al. [1999] and Hollars et al. [2004], the field of view of comparison is much smaller than AIRS. Lastly, it should be reiterated that the cases shown here are for  $f_A < 0.15$ ; in the other comparisons the full range of cloud opacity is compared. The most tenuous cirrus cases are expected to have much poorer agreement than more opaque cloud cover (as shown in Table 1); Frey et al. [1999] and Hawkinson et



**Figure 8.** Frequency histograms of the agreement between an active- and passive-derived  $Z_{CLD}$  obtained from several independent data sources. (a) Comparison of ground-based radar with AMSR-2 (“All Clouds” in Figure 6 of Hollars et al. [2004] (with permission from Elsevier)) and AIRS  $Z_{CLD}$  (Figure 2). (b) Comparison of aircraft lidar and the MODIS Airborne Simulator  $Z_{CLD}$  [Frey et al., 1999, Figure 1], ground-based lidar plus radar and GOES  $Z_{CLD}$  (Figures 3 and 5 from Hawkinson et al. [2005] for the  $3 \times 3$  and single FOV, respectively), and ground-based lidar and AIRS  $Z_{CLD}$  (Figure 7).

*al.* [2005] can be expected to have better agreement than the results presented here for Nauru.

## 4. Comparing AIRS and MLS Cloud Properties

### 4.1. Different Perspectives of Coincident Cloud Fields

[34] The eight minute difference in measurements of clouds by the AIRS and MLS instruments provide a unique opportunity to cross examine AIRS cloud height and fraction fields with a large number of near-simultaneous coincident MLS IWC measurements. This offers the potential of characterizing the 3-D spatial state of high-level cloudiness [Liou *et al.*, 2002]. Nadir IR sounding instruments, such as AIRS, have limitations in resolving vertical cloud structure but have good horizontal resolution. Conversely, limb instruments like the MLS have limitations in their horizontal field of view, but are ideal for making measurements of clouds at fine vertical resolution. The two very different cloud measurements can be compared if the limitations and strengths of each measurement are understood in terms of the sensitivity to particular cloud systems.

[35] AIRS and MLS have numerous differences in their instrumentation, measurement wavelengths, retrieval techniques, and viewing geometry. The MLS senses through clouds horizontally in thin vertical layers, while AIRS observes radiance from a vertical or near-vertical atmospheric column. Because the effective size, size distribution, and habit of ice particles significantly attenuate radiance as a function of wavelength, the AIRS and MLS instruments effectively observe different parts of the same cloud. Because MLS views in the forward along-track direction, with the tangent altitude trailing the AIRS nadir observations by approximately 8 min, the instrument, wavelength, retrieval technique, and viewing geometry-related differences likely dominate over those due to cloud evolution. However, cloud evolution should not be dismissed, especially in rapidly evolving convective systems. Vertical velocities greater than  $10 \text{ m s}^{-1}$  are not uncommon in convective systems; this translates to a distance  $>4 \text{ km}$  in an 8 min period.

[36] MLS is sensitive in detecting ice particles from a few tens to a few hundreds of microns in diameter in optically dense clouds [Wu *et al.*, 2006]. It is able to sense into and through many thick cumulonimbus clouds such as those associated with deep convection and anvil outflow but can miss thin cirrus composed of smaller ice particles. The AIRS instrument is most sensitive to tenuous clouds but saturates around an IR optical depth above 5 [Huang *et al.*, 2004]. A tradeoff exists between the reduced sensitivity of MLS to small particle ice clouds compared to AIRS, and the longer limb-viewing path length of MLS (about an order of magnitude longer than the nadir view); see Liao *et al.* [1995] and Kahn *et al.* [2002, and references therein] for further discussion on the detection sensitivity due to viewing geometry. Also, the MLS reports IWC at discrete pressure levels, and AIRS reports cloud top pressure ( $P_A$ ) at a continuous range of altitudes.

[37] We compare the MLS IWC to  $P_A$  for each of the six pressure levels between 82 and 215 hPa. The best MLS sensitivity to cloud top height is at 100–147 hPa. MLS levels are discrete and  $P_A$  is continuous, necessitating a comparison on an MLS level-by-level basis. The compar-

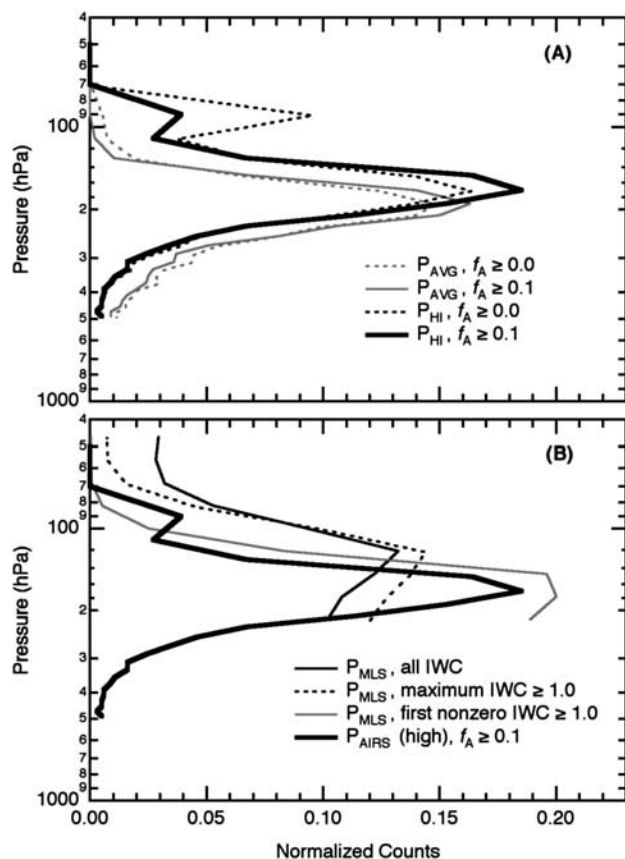
isons are subcategorized as a function of the AIRS upper level cloud fraction ( $f_A$ ) and MLS IWC. We define the MLS cloud top pressure ( $P_M$ ) as the highest altitude (lowest pressure) with  $\text{IWC} > 0 \text{ mg m}^{-3}$ . Some values of cloud-induced radiance are below a nominal clear-sky uncertainty; the sensitivity of the agreement to removing such cases will be discussed.

[38] The AIRS  $P_A$  horizontal FOV is roughly circular at  $\sim 45 \text{ km}$ , and the MLS FOV is  $165 \text{ km} \times 7 \text{ km}$  (along track  $\times$  cross track), complicating comparisons in heterogeneous cloud cover. Thus we represent  $P_A$  in two ways: the three nearest  $P_A$  retrievals to the MLS 100 hPa tangent point along the line of sight are averaged ( $P_{\text{AVG}}$ ), and the lowest value of  $P_A$  (highest altitude) among the three nearest  $P_A$  retrievals is defined as  $P_{\text{HI}}$ . In the case of  $P_{\text{AVG}}$  the total horizontal AIRS FOV along the MLS line of sight is roughly  $135 \times 45 \text{ km}$  (along track  $\times$  cross track), which is considerably wider than MLS cross-track FOV. In the case of  $P_{\text{HI}}$  previous studies of clouds in occultation measurements [Kahn *et al.*, 2002, and references therein] suggest the cloud may fill a very small portion of the FOV along the line of sight; this motivates the use of  $P_{\text{HI}}$  for determining  $P_A$ .

### 4.2. Results

[39] The frequency distribution of  $P_A$  and  $P_M$  for collocated and coincident cloud observations is shown in Figure 9. In Figure 9a, the  $P_{\text{AVG}}$  indicates a peak cloud occurrence near 200 hPa, with a rapidly decreasing frequency at higher and lower pressures. In contrast, the  $P_{\text{HI}}$  shows a peak closer to 170 hPa, and a secondary peak near 90–100 hPa; the secondary peak is not observed in the  $P_{\text{AVG}}$  approach, as it appears to smooth over the highest-altitude cloud retrievals. The secondary peak in  $P_{\text{HI}}$  is dominated by clouds where  $f_A < 0.1$ . It resides around the altitude where an extensive layer of geometrically and optically thin cirrus is known to exist [Peter *et al.*, 2004; Dessler *et al.*, 2006]; however some of these values could be spurious. The CALIPSO lidar [Winker *et al.*, 2003] is expected to be useful in quantifying the sensitivity of AIRS retrievals to thin cirrus clouds near the tropopause because of the opportunity to collocate measurements within minutes of each other.

[40] In Figure 9b the cloud occurrence frequency distribution for the MLS pressure levels is shown. When all cases are included the shape of the frequency distribution is substantially different than that for AIRS in Figure 9a, with a peak higher in altitude. If the MLS measurements in which the peak values of  $\text{IWC} < 1 \text{ mg m}^{-3}$  within a given occultation are not considered, the shape of the curve remains similar, although the highest clouds are mostly removed. The frequency distribution changes substantially for the cases when the highest MLS level with  $\text{IWC} < 1.0 \text{ mg m}^{-3}$  are excluded; the peak frequency occurs at a similar altitude as AIRS. A slightly larger number of cases occur above the peak for MLS, which is likely due to MLS finite ( $\sim 3.5 \text{ km}$ ) vertical FOV. With this antenna pattern, MLS tends to report clouds at a slightly higher altitude where clouds only partially enter the FOV. Additionally, a larger number of MLS cases occur below the peak for MLS; this is because MLS reports cloud at all tangent altitudes, not the top of  $P_{\text{CLD}}$ , as in AIRS.



**Figure 9.** (a) Frequency distribution of AIRS  $P_{\text{CLD}}$  for collocated AIRS and MLS observations during 1 and 3–20 January 2005 within  $\pm 30^\circ$  latitude ( $N = 3726$ ). All coincident cloud observations between AIRS and MLS are used; we do not consider cases where only one instrument detects clouds. Shown are the two AIRS  $P_{\text{CLD}}$  (AVG and HIGH) approaches (see text for details) for all values of upper cloud fraction ( $f_A$ ) and  $f_A > 0.1$ . (b) Same as Figure 9a except that the frequency distribution is for the MLS  $P_{\text{CLD}}$ . The AIRS  $P_{\text{CLD}}$  (high) curve for  $f_A > 0.1$  is repeated from Figure 9a for comparison purposes. Also shown is the frequency distribution for cases excluding maximum MLS IWC  $< 1.0 \text{ mg m}^{-3}$  and the highest MLS level with IWC  $< 1.0 \text{ mg m}^{-3}$ . The MLS bins are centered on the tangent pressure altitudes from 68 to 215 hPa, while the AIRS bins are in 20 hPa intervals centered at 50, 70, ..., 470, 490 hPa.

[41] Figure 10 summarizes  $P_A - P_M$  versus MLS pressure level for the cases presented in Figure 9. Considering the  $P_{\text{AVG}}$  and  $P_{\text{HI}}$  methods for “All Cases,” the best agreement is for the 100–177.8 hPa levels, using the width of the distribution as a measure of agreement. The bias,  $\sigma$ , and statistical significance for all MLS tangent altitudes using the  $P_{\text{AVG}}$  and  $P_{\text{HI}}$  methods are summarized in Table 2.  $P_{\text{AVG}}$  is biased low in pressure (high in altitude) relative to  $P_M$  at the lower tangent altitudes, transitioning to a high bias in pressure at the upper tangent altitudes. The  $\sigma$  of the  $P_{\text{AVG}} - P_M$  distribution reaches a minimum at  $P_M = 121.2 \text{ hPa}$ , increasing at lower and higher tangent altitudes. The results

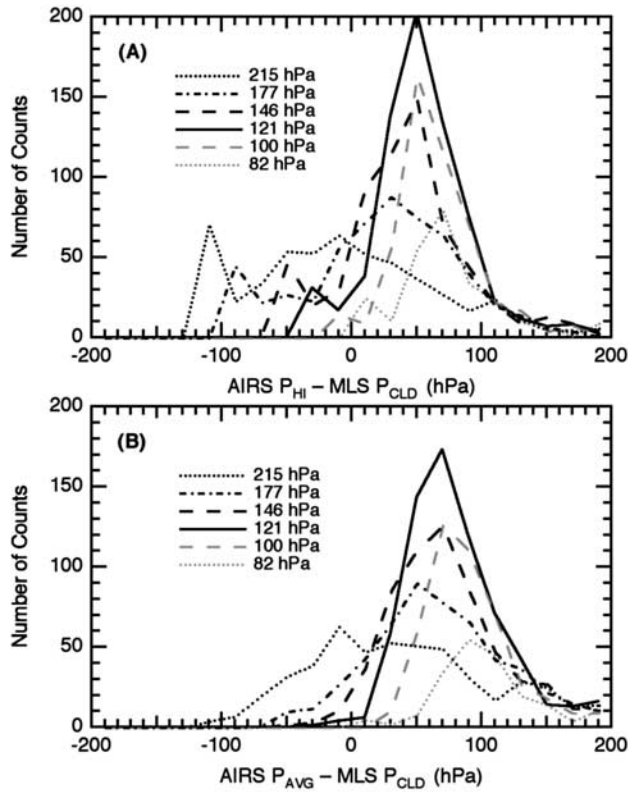
for  $P_{\text{HI}}$  are similar except that the  $P_{\text{HI}}$  bias is consistently lower in pressure by 30–80 hPa than  $P_{\text{AVG}}$  (or 1–2 km), which is consistent with MLS half-power beam width of 3.5 km. Additionally, the  $\sigma$  variability is consistently lower for  $P_{\text{HI}}$  compared to  $P_{\text{AVG}}$ . This suggests that a simple average of multiple AIRS  $P_{\text{CLD}}$  retrievals along the MLS line of sight is less representative of the actual cloud altitude than is the highest AIRS  $P_{\text{CLD}}$  when comparing to a limb sounding-derived cloud measurement [Kahn et al., 2002].

[42] AIRS and MLS clouds show an improved agreement as IWC increases. Table 2 shows the bias,  $\sigma$  and statistical significance for subsets of coincident retrievals when the highest in altitude IWC value in a given MLS occultation is greater than a specified threshold (the top row of Table 2). The MLS IWC retrievals are inherently noisy at low values because of uncertainties in the clear-sky signature; this uncertainty is quantified at the  $3\sigma$  level as a function of MLS tangent altitude [Wu and Jiang, 2004]. The AIRS – MLS  $P_{\text{CLD}}$  difference tends to decrease as higher IWC cases are considered, and the  $\sigma$  values tend to decrease. The implication is that the AIRS and MLS  $P_{\text{CLD}}$  agrees better in the high IWC cases, when diffuse (low IWC) cloud top cases are not considered.

[43] The statistical significance of the AIRS – MLS comparisons are highlighted in Table 2. This comparison is not analogous to that of AIRS to ARM measurements because MLS retrieves IWC at discrete levels. A randomization test like the one described in Appendix A for continuous quantities is not appropriate here. Here we test the hypothesis that  $P_M$  at a given level could be a plausible sample from the distribution provided by  $P_A$  at that level. To test this we group  $P_A$  according to classes partitioned by  $P_M$ . Then, we conduct a separate hypothesis test for each class. If  $P_M$  is greater than 97.5% or less than 2.5% of the  $P_A$  values, we can reject the null hypothesis, and infer that the two distributions of  $P_A$  and  $P_M$  are statistically different at the 5% level.

[44] Table 2 shows that we cannot reject the hypothesis that  $P_M$  comes from a distribution of  $P_A$  for most MLS tangent altitudes. This implies that the AIRS and MLS  $P_{\text{CLD}}$  are statistically “similar” and could come from the same distribution of clouds. In other words, AIRS and MLS “agree” at these levels. However, this is not true at the highest altitudes, and especially for  $P_{\text{AVG}}$ . In these instances we can reject the hypothesis that AIRS and MLS  $P_{\text{CLD}}$  come from the same statistical distribution of clouds. In other words, AIRS and MLS “disagree” at these levels. The sample size varies with the IWC range considered, but the statistical significance is generally invariant with IWC (not shown). This result implies that AIRS and MLS are observing different aspects of the same cloud system at the highest MLS tangent altitudes, which is related in part to the geometry, wavelength, and retrieval method differences between the two instruments.

[45] In summary, the agreement of AIRS and MLS depends on the method of determining AIRS  $P_{\text{CLD}}$ , the peak altitude of MLS IWC, the maximum IWC amount, and  $f_A$ . Some of the main findings are: (1) the vertical frequency distribution of  $P_M$  agrees well in cases where tenuous cirrus cases are not considered, namely, when the highest MLS tangent level has IWC  $> 1 \text{ mg m}^{-3}$ , (2) the bias and  $\sigma$



**Figure 10.** (a) Frequency distribution of AIRS (HIGH) – MLS  $P_{CLD}$  versus MLS pressure level using the same cases presented in Figure 9. (b) Same as Figure 10a except for AIRS (AVG)  $P_{CLD}$ .

variability in AIRS and MLS  $P_{CLD}$  decreases for increasing MLS IWC, (3)  $P_{AVG}$  is biased high in altitude to  $P_M$  at the lower tangent altitudes, transitioning to a low bias in altitude at the upper tangent altitudes, (4)  $P_{HI}$  is consistently lower in pressure by 30–80 hPa than  $P_{AVG}$  (or 1–2 km), (5) the  $\sigma$  variability is less for  $P_{HI}$  compared to  $P_{AVG}$ , which suggests that averaging multiple AIRS  $P_{CLD}$  retrievals along the

MLS line of sight is less accurate than using the highest AIRS  $P_{CLD}$ , and (6) the differences in AIRS and MLS  $P_{CLD}$  are statistically significant at the highest MLS tangent altitudes, implying that AIRS and MLS “agree” at lower tangent altitudes, but “disagree” at higher tangent altitudes.

[46] Finding (6) is consistent with the reduced sensitivity of AIRS to optically thin cirrus near the tropopause. The differences in AIRS and MLS  $P_{CLD}$  have contributions from sensitivity to particle size, sampling errors (e.g., using  $P_{AVG}$  or  $P_{HI}$  for AIRS  $P_{CLD}$ ), and algorithmic differences. In section 3, the comparisons of AIRS to ARM observations at Nauru Island showed that AIRS tends to place optically thin cirrus low in altitude. This behavior is consistent with IR-derived  $P_{CLD}$  located well below the cloud top when compared to lidar [Holz *et al.*, 2006]. We anticipate that the future CloudSat [Stephens *et al.*, 2002] and CALIPSO [Winker *et al.*, 2003] spaceborne cloud radar and lidar missions will provide accurate cloud height and IWC information. This will aid in understanding the capability of passive IR- and MW-derived cloud height and IWC measurements.

### 5. Summary and Conclusions

[47] We investigate the uncertainty in retrieved cloud top height ( $Z$ ) from the Atmospheric Infrared Sounder (AIRS) and Advanced Microwave Sounding Unit (AMSU) observing suite located on board the Earth Observing System (EOS) Aqua platform [Aumann *et al.*, 2003]. We compare  $Z_A$  with coincident and independent measurements of  $Z$  derived from the micropulse lidar and millimeter wave cloud radar ( $Z_{ARM}$ ) at the Atmospheric Radiation Measurement (ARM) program sites of Nauru and Manus islands [Ackerman and Stokes, 2003], and the inferred  $Z$  derived from the vertically resolved Microwave Limb Sounder (MLS) ice water content (IWC) retrievals [Wu *et al.*, 2006].

[48] We use the Active Remotely-Sensed Cloud Locations (ARSCL) value-added product (VAP) [Clothiaux *et al.*, 2000] to constrain the AIRS upper level cloud top height ( $Z_A$ ) uncertainties. The ARSCL VAP combines the different strengths of the micropulse lidar, millimeter wave

**Table 2.** AIRS-MLS Difference in  $P_{CLD}$ <sup>a</sup>

$P_{MLS}$	$P_{AIRS}$	All Cases	IWC > 1	IWC > 2	IWC > 5	IWC > 10	IWC > 20
215.4	AVG	61 ± 101 (544)	61 ± 101 (544)	61 ± 101 (544)	55 ± 96 (499)	39 ± 83 (308)	31 ± 68 (68)
	MAX	2 ± 93 (544)	2 ± 93 (544)	2 ± 93 (544)	-4 ± 87 (499)	-13 ± 70 (308)	-10 ± 59 (68)
177.8	AVG	87 ± 84 (577)	87 ± 84 (577)	84 ± 80 (543)	64 ± 62 (216)	56 ± 55 (14)	-
	MAX	33 ± 77 (577)	33 ± 77 (577)	30 ± 71 (543)	15 ± 55 (216)	4 ± 47 (14)	-
146.8	AVG	93 ± 85 (649)	83 ± 67 (591)	<b>77 ± 57 (294)</b>	-	-	-
	MAX	49 ± 72 (649)	42 ± 55 (591)	38 ± 43 (294)	-	-	-
121.2	AVG	<b>93 ± 69 (704)</b>	<b>85 ± 54 (310)</b>	<b>81 ± 40 (26)</b>	-	-	-
	MAX	59 ± 56 (704)	54 ± 42 (310)	48 ± 26 (26)	-	-	-
100.0	AVG	<b>115 ± 86 (498)</b>	<b>100 ± 66 (89)</b>	-	-	-	-
	MAX	74 ± 65 (498)	58 ± 24 (89)	-	-	-	-
82.5	AVG	<b>174 ± 134 (281)</b>	<b>189 ± 122 (22)</b>	-	-	-	-
	MAX	<b>101 ± 106 (281)</b>	<b>67 ± 33 (22)</b>	-	-	-	-

<sup>a</sup>Values are given in hPa. Positive (negative) differences imply a higher (lower) AIRS mean pressure over its MLS counterpart. The same cases used in Figures 9 and 10 are presented here. The categories are partitioned by IWC. The IWC value indicates the highest altitude with nonzero IWC in each MLS observation. The AIRS  $P_{CLD}$  is reported two ways: (1) the three nearest AIRS  $P_{CLD}$  retrievals relative to the MLS tangent point at 100 hPa are averaged ( $P_{AVG}$ ), and (2) the minimum AIRS  $P_{CLD}$  retrieval of the nearest three is used ( $P_{HI}$ ). Bold numbers indicate that  $P_M$  and AIRS  $P_{CLD}$  are from statistically different cloud distributions at the 5% significance level.

cloud radar, microwave radiometer, and laser ceilometer into a single cloud top and base product, allowing for a comprehensive database for clouds with varying heights and thicknesses, optical depths ( $\tau$ ), and hydrometeor characteristics. For a limited set of AIRS overpasses coincident with Manus and Nauru islands (April–September 2003), only the cloud radar was in operation at Manus, and only the micropulse lidar was operational at Nauru. The primary findings of the AIRS – ARM comparisons are as follows.

[49] 1. AIRS is sensitive to a wide range of clouds, with statistically significant agreement of AIRS and ARM  $Z_{\text{CLD}}$  for an effective cloud fraction ( $f_{\text{A}}$ )  $> 0.05$ .

[50] 2. For all cases of  $f_{\text{A}} > 0.15$  at Manus using the cloud radar only, the mean difference and  $\sigma$  variability in  $Z_{\text{A}} - Z_{\text{ARM}}$  ranges from  $-2.2$  to  $1.6 \text{ km} \pm 1.0$  to  $4.2 \text{ km}$ . The range of values is a result of using different techniques to determine  $Z_{\text{ARM}}$ , as well as day/night differences.

[51] 3. The differences between  $Z_{\text{A}}$  and  $Z_{\text{ARM}}$  are not a function of the length of the time window at Manus using the cloud radar, but time window dependence is seen at Nauru for tenuous cirrus using the micropulse lidar, suggesting that ARM sampling biases are a function of cloud opacity and the ARM instrument being used.

[52] 4. The three height methods give consistently different results in  $Z_{\text{A}} - Z_{\text{ARM}}$ ; these differences are larger (smaller) for smaller (larger)  $f_{\text{A}}$ . Cloud heights determined from Cloudsat and CALIPSO will help determine the cloud types for which these averaging methods are most appropriate.

[53] 5. For the cases of  $0.05 \leq f_{\text{A}} < 0.15$  at Nauru using the micropulse lidar only, the mean difference and  $\sigma$  variability in the agreement is  $-1.1$  to  $2.1 \text{ km} \pm 3.0$  to  $4.5 \text{ km}$ . This agreement is substantially improved over that using the cloud radar at Manus for this range of  $f_{\text{A}}$ , and demonstrates the sensitivity of AIRS to thin cirrus.

[54] The near simultaneous measurements of clouds by the AIRS and MLS instruments permit cross examination of horizontally resolved cloud height and fraction fields with vertically resolved ice water content (IWC). Comparisons of cloud top pressure ( $P_{\text{CLD}}$ ) inferred from coincident AIRS and MLS IWC retrievals show that the mean difference depends upon the method for determining AIRS  $P_{\text{CLD}}$  (as with the ARM comparisons), the peak altitude and maximum value of MLS IWC, and  $f_{\text{A}}$ . The primary findings of the AIRS – MLS comparisons are as follows.

[55] 1. The bias and  $\sigma$  variability of AIRS – MLS  $P_{\text{CLD}}$  decreases for increasing MLS IWC. The best agreement is seen when comparisons are limited to  $f_{\text{A}} > 0.1$  and  $\text{IWC} > 1.0 \text{ mg m}^{-3}$ .

[56] 2. When using the highest AIRS  $P_{\text{CLD}}$  (abbreviated as  $P_{\text{HI}}$ ) along the MLS tangent line of sight, the bias is lower in pressure by 30–80 hPa than when averaging the nearest three AIRS retrievals of  $P_{\text{CLD}}$  (abbreviated as  $P_{\text{AVG}}$ ).

[57] 3. The  $\sigma$  variability is consistently lower for  $P_{\text{HI}}$  compared to  $P_{\text{AVG}}$ , suggesting that an average of multiple AIRS  $P_{\text{CLD}}$  retrievals along the MLS line of sight is often less accurate than using the highest AIRS  $P_{\text{CLD}}$ .

[58] 4. Differences in AIRS and MLS  $P_{\text{CLD}}$  are statistically significant at the highest MLS tangent altitudes. This implies that AIRS and MLS statistically “agree” at lower tangent altitudes, but “disagree” at higher tangent altitudes.

The disagreement occurs in regions dominated by tenuous cirrus near the tropopause.

[59] Both AIRS and MLS have strengths and weaknesses in their abilities to sense cloud structure. The AIRS is capable of providing wide swaths of vertically integrated IR radiances, while the MLS is ideal for making measurements of clouds at discrete vertical intervals because of the limb viewing geometry. This paper offers initial insights into upper tropospheric cloud structure as observed by AIRS and MLS using surface-based ARM measurements. By cross comparing the retrieved cloud quantities of instruments like AIRS and MLS (which view the same cloud fields from very different viewing perspectives) to active cloud radar and lidar observations of clouds, a step toward characterizing the 3-D picture of upper tropospheric cloud structure is taken.

## Appendix A

[60] This is a description of the test of the null hypothesis that observed agreement is due to randomness alone. Specifically, for each case in Table 1 (the different definitions of  $Z_{\text{ARM}}$  categorized by  $f_{\text{A}}$ ), we begin with a set of bivariate data points  $(Z_{\text{ARM}}, Z_{\text{A}})$ ,  $i = 1, \dots, N$ , where  $N$  is the number of data point pairs. We measure the agreement between  $Z_{\text{ARM}}$  and  $Z_{\text{A}}$  by  $\Delta$ , defined below as

$$\Delta = \frac{1}{N} \sum_{i=1}^N (Z_{\text{A}} - Z_{\text{ARM}})^2. \quad (\text{A1})$$

The value  $\Delta$  is the average of the squared differences between  $Z_{\text{A}}$  and  $Z_{\text{ARM}}$  on the  $L_2$  norm, since the dynamic range of the variables is small [Menke, 1989]. We calculate the true value of delta ( $\Delta^*$ ), as shown in equation (A1), using  $N$  data point pairs. Then, we simulate the distribution of  $\Delta$  under the assumption that  $Z_{\text{A}}$  and  $Z_{\text{ARM}}$  are *not* related. For each of  $B = 10,000$  trials in our simulation, we randomly reordered the  $Z_{\text{ARM}}$  values and computed  $\Delta_{\text{b}}$ , for  $b = 1, \dots, B$ . The histogram of  $\Delta_{\text{b}}$  is an estimate of the so-called “null distribution” of  $\Delta$ : the distribution under the assumption that the null hypothesis is true. The  $p$  value of the hypothesis test is the proportion of  $\Delta_{\text{b}}$  less than or equal to  $\Delta^*$ . Typically, the null hypothesis is rejected if the  $p$  value is less than 0.05 or, with a stricter standard, 0.01, corresponding to 5% and 1% confidence.

[61] Resampling tests rely on assumptions that the data are a representative sample of the population from which they are drawn; in this case, the hypothetical population of  $\Delta^*$  we would obtain were we able to examine all possible coincident  $Z_{\text{A}}$  and  $Z_{\text{ARM}}$ . Since the sample sizes ( $N$ ) here are relatively small ( $N < 20$  in most cases), the validity of these results is heavily dependent on the assumption of representativeness. There are (at least) three reasons to believe that the sample is reasonably representative: (1) each coincident case has been inspected individually and is seen to represent a wide variety of cloud scenes within each category of  $f_{\text{A}}$ , (2) the conclusions drawn from these results are consistent with the expected sensitivity of  $Z_{\text{A}}$  and  $Z_{\text{ARM}}$ , and (3) the histograms of the comparison compare favorably with those from other data sources. A longer time series of collocated

measurements will likely give an increased level of representativeness.

[62] **Acknowledgments.** The authors thank John Blaisdell for detailed discussion on the AIRS cloud retrieval system. We thank all colleagues on the AIRS and MLS teams for support and helpful comments and two anonymous reviewers for improvements to the manuscript. B. H. K. was funded by a National Research Council Resident Research Associate fellowship while in residence at NASA's Jet Propulsion Laboratory (JPL). Value-added product data were obtained from the Atmospheric Radiation Measurement (ARM) Program sponsored by the U.S. Department of Energy, Office of Science, Office of Biological and Environmental Research, Climate Change Research Division. This work was performed at JPL, California Institute of Technology, Pasadena, California, under contract with NASA.

## References

- Ackerman, T. P., and G. M. Stokes (2003), The Atmospheric Radiation Measurement program, *Phys. Today*, *56*, 38–44.
- Aumann, H. H., et al. (2003), AIRS/AMSU/HSB on the Aqua mission: Design, science objectives, data products, and processing systems, *IEEE Trans. Geosci. Remote Sens.*, *41*, 253–264.
- Baum, B. A., and B. A. Wielicki (1994), Cirrus cloud retrievals using infrared sounding data: Multilevel cloud errors, *J. Appl. Meteorol.*, *33*, 107–117.
- Berendes, T. A., D. A. Berendes, R. M. Welch, E. G. Dutton, T. Uttal, and E. E. Clothiaux (2004), Cloud cover comparisons of the MODIS daytime cloud mask with surface instruments at the north slope of Alaska ARM site, *IEEE Trans. Geosci. Remote Sens.*, *42*, 2584–2593.
- Cahalan, R. F., and J. H. Joseph (1989), Fractal statistics of cloud fields, *Mon. Weather Rev.*, *117*, 261–272.
- Chahine, M. T. (1974), Remote sounding of cloudy atmospheres. I. The single cloud layer, *J. Atmos. Sci.*, *31*, 233–243.
- Chylek, P., and C. Borel (2004), Mixed phase cloud water/ice structure from high spatial resolution satellite data, *Geophys. Res. Lett.*, *31*, L14104, doi:10.1029/2004GL020428.
- Clothiaux, E. E., T. P. Ackerman, G. G. Mace, K. P. Moran, R. T. Marchand, M. A. Miller, and B. E. Martner (2000), Objective determination of cloud heights and radar reflectivities using a combination of active remote sensors at the ARM CART sites, *J. Appl. Meteorol.*, *39*, 645–665.
- Comstock, J. M., and C. Jakob (2004), Evaluation of tropical cirrus cloud properties derived from ECMWF model output and ground based measurements over Nauru Island, *Geophys. Res. Lett.*, *31*, L10106, doi:10.1029/2004GL019539.
- Comstock, J. M., T. P. Ackerman, and G. G. Mace (2002), Ground-based lidar and radar remote sensing of tropical cirrus clouds at Nauru Island: Cloud statistics and radiative impacts, *J. Geophys. Res.*, *107*(D23), 4714, doi:10.1029/2002JD002203.
- Cooper, S. J., T. S. L'Ecuyer, and G. L. Stephens (2003), The impact of explicit cloud boundary information on ice cloud microphysical property retrievals from infrared radiances, *J. Geophys. Res.*, *108*(D3), 4107, doi:10.1029/2002JD002611.
- Cracknell, A. P. (1998), Synergy in remote sensing—what's in a pixel?, *Int. J. Remote Sens.*, *19*, 2025–2047.
- Cunningham, J. D., and J. M. Haas (2004), NPOESS instruments: The future of METSAT observations, paper presented at 11th Conference on Satellite Meteorology and Oceanography, Am. Meteorol. Soc., Seattle, Wash.
- Dessler, A. E., S. P. Palm, W. D. Hart, and J. D. Spinhirne (2006), Tropopause-level thin cirrus coverage revealed by ICESat/Geoscience Laser Altimeter System, *J. Geophys. Res.*, *111*, D08203, doi:10.1029/2005JD006586.
- Elouragini, S., H. Chtioui, and P. H. Flamant (2005), Lidar remote sounding of cirrus clouds and comparison of simulated fluxes with surface and METEOSAT observations, *Atmos. Res.*, *73*, 23–36.
- Fetzer, E. J., B. H. Lambrightsen, A. Eldering, H. H. Aumann, and M. T. Chahine (2006), Biases in total precipitable water vapor climatologies from Atmospheric Infrared Sounder and Advanced Microwave Scanning Radiometer, *J. Geophys. Res.*, *111*, D09S16, doi:10.1029/2005JD006598.
- Frey, R. A., B. A. Baum, W. P. Menzel, S. A. Ackerman, C. C. Moeller, and J. D. Spinhirne (1999), A comparison of cloud top heights computed from airborne lidar and MAS radiance data using CO<sub>2</sub> slicing, *J. Geophys. Res.*, *104*, 24,547–24,555.
- Garrett, T. J., H. Gerber, D. G. Baumgardner, C. H. Twohy, and E. M. Weinstock (2003), Small, highly reflective ice crystals in low-latitude cirrus, *Geophys. Res. Lett.*, *30*(21), 2132, doi:10.1029/2003GL018153.
- Gettelman, A., W. D. Collins, E. J. Fetzer, A. Eldering, F. W. Irion, P. B. Duffy, and G. Bala (2006), Climatology of upper tropospheric relative humidity from the Atmospheric Infrared Sounder and implications for climate, *J. Clim.*, *19*, 6104–6121.
- Hawkinson, J. A., W. Feltz, and S. A. Ackerman (2005), A comparison of GOES sounder— and cloud lidar— and radar—retrieved cloud-top heights, *J. Appl. Meteorol.*, *44*, 1234–1242.
- Heymnsfield, A. J., and G. M. McFarquhar (2002), Mid-latitude and tropical cirrus: Microphysical properties, in *Cirrus*, edited by D. K. Lynch et al., pp. 433–448, Oxford Univ. Press, New York.
- Hollars, S., Q. Fu, J. Comstock, and T. Ackerman (2004), Comparison of cloud-top height retrievals from ground-based 35 GHz MMCR and GMS-5 satellite observations at ARM TWP Manus site, *Atmos. Res.*, *72*, 169–186.
- Holz, R. E., S. Ackerman, P. Antonelli, F. Nagle, R. O. Knuteson, M. McGill, D. L. Hlavka, and W. D. Hart (2006), An improvement to the high spectral resolution CO<sub>2</sub> slicing cloud top altitude retrieval, *J. Atmos. Oceanic Technol.*, *23*, 653–670.
- Horváth, Á., and R. Davies (2004), Anisotropy of water cloud reflectance: A comparison of measurements and 1D theory, *Geophys. Res. Lett.*, *31*, L01102, doi:10.1029/2003GL018386.
- Huang, H.-L., P. Yang, H. Wei, B. A. Baum, Y. Hu, P. Antonelli, and S. A. Ackerman (2004), Inference of ice cloud properties from high spectral resolution infrared observations, *IEEE Trans. Geosci. Remote Sens.*, *42*, 842–853.
- Intergovernmental Panel on Climate Change (2001), *Climate Change 2001: The Scientific Basis*, edited by J. T. Houghton et al., 881 pp., Cambridge Univ. Press, New York.
- Kahn, B. H., A. Eldering, F. W. Irion, F. P. Mills, B. Sen, and M. R. Gunson (2002), Cloud identification in Atmospheric Trace Molecule Spectroscopy infrared occultation measurements, *Appl. Opt.*, *41*, 2768–2780.
- Kahn, B. H., K. N. Liou, S.-Y. Lee, E. F. Fishbein, S. DeSouza-Machado, A. Eldering, E. J. Fetzer, S. E. Hannon, and L. L. Strow (2005), Night-time cirrus detection using Atmospheric Infrared Sounder window channels and total column water vapor, *J. Geophys. Res.*, *110*, D07203, doi:10.1029/2004JD005430.
- King, M. D., Y. J. Kaufman, W. P. Menzel, and D. Tanré (1992), Remote-sensing of cloud, aerosol, and water-vapor properties from the Moderate Resolution Imaging Spectroradiometer (MODIS), *IEEE Trans. Geosci. Remote Sens.*, *30*, 2–27.
- Liao, X. H., W. B. Rossow, and D. Rind (1995), Comparison between SAGE-II and ISCCP high level clouds. 1. Global and zonal mean cloud amounts, *J. Geophys. Res.*, *100*, 1121–1135.
- Liou, K. N. (2002), *An Introduction to Atmospheric Radiation*, 2nd ed., 583 pp., Elsevier, New York.
- Liou, K. N., S. C. Ou, Y. Takano, J. Roskovensky, G. G. Mace, K. Sassen, and M. Poellot (2002), Remote sensing of three-dimensional inhomogeneous cirrus clouds using satellite and mm-wave cloud radar data, *Geophys. Res. Lett.*, *29*(9), 1360, doi:10.1029/2002GL014846.
- Livesey, N. J., W. V. Snyder, W. G. Read, and P. A. Wagner (2006), Retrieval algorithms for the EOS Microwave Limb Sounder (MLS) instrument, *IEEE Trans. Geosci. Remote Sens.*, *44*, 1144–1155.
- Mace, G. G., Y. Zhang, S. Platnick, M. D. King, P. Minnis, and P. Yang (2005), Evaluation of cirrus cloud properties derived from MODIS data using cloud properties derived from ground-based observations collected at the ARM SGP site, *J. Appl. Meteorol.*, *40*, 221–240.
- Mahesh, A., M. A. Gray, S. P. Palm, W. D. Hart, and J. D. Spinhirne (2004), Passive and active detection of clouds: Comparisons between MODIS and GLAS observations, *Geophys. Res. Lett.*, *31*, L04108, doi:10.1029/2003GL018859.
- Mather, J. H. (2005), Seasonal variability in clouds and radiation at the Manus ARM site, *J. Clim.*, *18*, 2417–2428.
- Menke, W. (1989), *Geophysical Data Analysis: Discrete Inverse Theory*, 289 pp., Elsevier, New York.
- Menzel, W. P., W. L. Smith, and T. R. Stewart (1983), Improved cloud motion wind vector and altitude assignment using VAS, *J. Clim. Appl. Meteorol.*, *22*, 377–384.
- Naud, C., J.-P. Muller, and E. E. Clothiaux (2002), Comparison of cloud top heights derived from MISR stereo and MODIS CO<sub>2</sub>-slicing, *Geophys. Res. Lett.*, *29*(16), 1795, doi:10.1029/2002GL015460.
- Naud, C., J.-P. Muller, M. Haeffelin, Y. Morille, and A. Delaval (2004), Assessment of MISR and MODIS cloud top heights through intercomparisons with a back-scattering lidar at SARTA, *Geophys. Res. Lett.*, *31*, L04114, doi:10.1029/2003GL018976.
- Peter, T., et al. (2004), Ultrathin Tropical Tropopause Clouds (UTTCs): I. Cloud morphology and occurrence, *Atmos. Chem. Phys.*, *3*, 1083–1091.
- Sassen, K. (1991), The polarization lidar technique for cloud research: A review and current assessment, *Bull. Am. Meteorol. Soc.*, *72*, 1848–1866.
- Sherwood, S. C., J.-H. Chae, P. Minnis, and M. McGill (2004), Underestimation of deep convective cloud tops by thermal imagery, *Geophys. Res. Lett.*, *31*, L11102, doi:10.1029/2004GL019699.
- Smith, W. L., and R. Frey (1990), On cloud altitude determinations from high resolution interferometer sounder (HIS) observations, *J. Appl. Meteorol.*, *29*, 658–662.

- Smith, W. L., and C. M. R. Platt (1978), Comparison of satellite-deduced cloud heights with indications from radiosonde and ground-based laser measurements, *J. Appl. Meteorol.*, *17*, 1796–1802.
- Spinhime, J. D., S. P. Palm, W. D. Hart, D. L. Hlavka, and E. J. Welton (2005), Cloud and aerosol measurements from GLAS: Overview and initial results, *Geophys. Res. Lett.*, *32*, L22S03, doi:10.1029/2005GL023507.
- Stephens, G. L., et al. (2002), The CloudSat mission and the A-train, *Bull. Am. Meteorol. Soc.*, *83*, 1771–1790.
- Stubenrauch, C. J., W. B. Rossow, N. A. Scott, and A. Chédin (1999), Clouds as seen by satellite sounders (3I) and imagers (ISCCP). part III: Spatial heterogeneity and radiative effects, *J. Clim.*, *12*, 3419–3442.
- Stubenrauch, C. J., F. Eddouia, and L. Sauvage (2005), Cloud heights from TOVS Path-B: Evaluation using LITE observations and distributions of highest cloud layers, *J. Geophys. Res.*, *110*, D19203, doi:10.1029/2004JD005447.
- Susskind, J., C. D. Barnet, and J. M. Blaisdell (2003), Retrieval of atmospheric and surface parameters from AIRS/AMSU/HSB data in the presence of clouds, *IEEE Trans. Geosci. Remote Sens.*, *41*, 390–409.
- Susskind, J., C. Barnet, J. Blaisdell, L. Iredell, F. Keita, L. Kouvaris, G. Molnar, and M. Chahine (2006), Accuracy of geophysical parameters derived from Atmospheric Infrared Sounder/Advanced Microwave Sounding Unit as a function of fractional cloud cover, *J. Geophys. Res.*, *111*, D09S17, doi:10.1029/2005JD006272.
- Vanbaucé, C., B. Cadet, and R. T. Marchand (2003), Comparison of POLDER apparent and corrected oxygen pressure to ARM/MMCR cloud boundary pressures, *Geophys. Res. Lett.*, *30*(5), 1212, doi:10.1029/2002GL016449.
- Waters, J. W., et al. (2006), The Earth Observing System Microwave Limb Sounder (EOS MLS) on the Aura satellite, *IEEE Trans. Geosci. Remote Sens.*, *44*, 1075–1092.
- Wielicki, B. A., and J. A. Coakley Jr. (1981), Cloud retrieval using infrared sounder data: Error analysis, *J. Appl. Meteorol.*, *20*, 157–169.
- Winker, D. M., J. Pelon, and M. P. McCormick (2003), The CALIPSO mission: Spaceborne lidar for observation of aerosols and clouds, *Proc. SPIE*, *4893*, 1–11.
- Wu, D. L., and J. H. Jiang (2004), EOS MLS algorithm theoretical basis for cloud measurements, *Doc. D-19299, ATBD-MLS-06*, Jet Propul. Lab., Pasadena, Calif.
- Wu, D. L., J. H. Jiang, and C. P. Davis (2006), EOS MLS cloud ice measurements and cloudy-sky radiative transfer model, *IEEE Trans. Geosci. Remote Sens.*, *44*, 1156–1165.
- Wylie, D. P., and P.-H. Wang (1999), Comparison of SAGE-II and HIRS co-located cloud height measurements, *Geophys. Res. Lett.*, *26*, 3373–3375.
- Zhang, H., and W. P. Menzel (2002), Improvement in thin cirrus retrievals using an emissivity-adjusted CO<sub>2</sub> slicing algorithm, *J. Geophys. Res.*, *107*(D17), 4327, doi:10.1029/2001JD001037.

---

A. J. Braverman, A. Eldering, E. J. Fetzer, E. Fishbein, J. H. Jiang, B. H. Kahn, and D. L. Wu, Jet Propulsion Laboratory, 4800 Oak Grove Drive, Mail Stop 169–237, Pasadena, CA 91109, USA. (brian.h.kahn@jpl.nasa.gov)