

PO:

Specification for a Bonded Foil Sensing 1000Klbs Dual Bridge Load Cell with Base

ELECTRICAL:

| | |
|------------------------|---|
| Rated Output– | 4.0mV/V (Nominal), Two Isolated Bridges |
| Excitation Voltage– | 20VDC MAX |
| Bridge Resistance– | 350Ohm (Nominal) |
| Zero Balance– | ±1.0% RO |
| Insulation Resistance– | 5000Megohm Min |

ACCURACY – (MAX ERROR):

| | |
|-----------------------------|--------------------|
| Static Error Band– | ±0.15% FS Max |
| Nonlinearity– | ±0.15% FS Max |
| Hysteresis– | ±0.15% FS Max |
| Nonrepeatability– | ±0.02% RO Max |
| Creep, in 20 min– | ±0.025% Max |
| Side Load Sensitivity– | ±0.25% F.S. Max |
| Eccentric Load Sensitivity– | ±0.25% F.S./in Max |

TEMPERATURE:

| | |
|--------------------|--------------------|
| Compensated Range– | 15 to 115°F |
| Compensated Range– | -10 to 45°C |
| Operating Range– | -65 to 200°F |
| Operating Range– | -55 to 90 °C |
| Effect on Zero– | ±0.0008% RO/°F Max |
| Effect on Zero– | ±0.0015% RO/°C Max |
| Effect on Output– | ±0.0008% RO/°F Max |
| Effect on Output– | ±0.0015% RO/°C Max |

MECHANICAL:

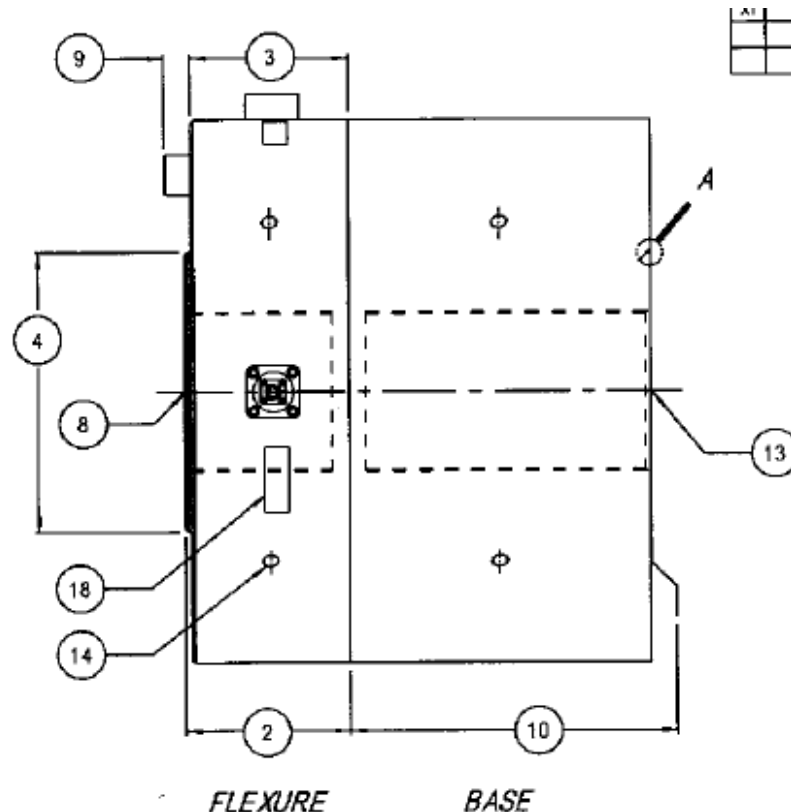
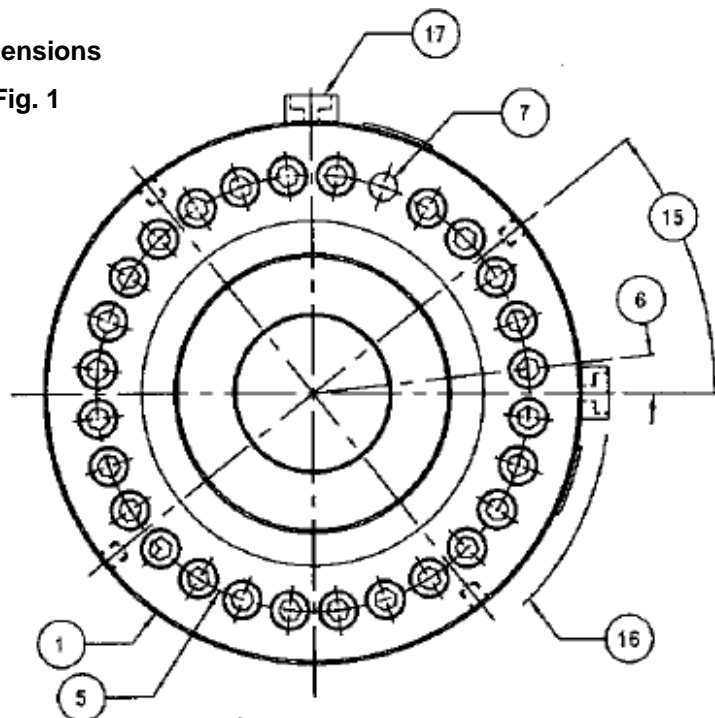
| | |
|---------------------------|---|
| Safe Overload– | ±150% CAP (with no zero shift) |
| Deflection @ RO– | 0.008inch |
| Deflection @ RO– | 0.2mm |
| Dimensions– | See Fig. 1, No exceptions permitted |
| Base– | See Fig. 1 (Bolted On-Installed) |
| Natural Frequency– | kHz 5.5 |
| Weight–lb | 1,060 lbs (including installed Base) |
| Weight–kg | 485 kg (including installed base) |
| Connector– | PT02E-12-8 (See Fig. 2) with Connector Protection |
| Calibration (to 1000Klbs) | Both T & C Provided, Calibration Certification to NIST Standard |
| Identification Label– | Includes Model, Capacity, Serial Number and Output |
| Finish coat | Powder coated |

Warranty:

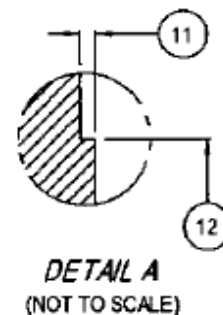
2 Years

Dimensions

Fig. 1



| # | LOAD CELL CHARACTERISTICS | U.S. CAPACITIES |
|----|---|--|
| 1 | CAPACITY | 1000K lbf |
| 2 | OUTSIDE DIAMETER | Ø 20.50 (Ø 520.7) |
| 3 | HUB SURFACE TO MOUNTING SURFACE | 6.25 (158.8) |
| 4 | BOLT SURFACE TO MOUNTING SURFACE | 6.00 (152.4) |
| 5 | HUB SURFACE DIAMETER | Ø 10.55 (Ø 268.0) |
| 6 | MOUNTING BOLT CIRCLE | Ø 16.500 (Ø 419.10) |
| 7 | MOUNTING BOLT OFFSET ANGLE | 6.43° |
| 8 | MOUNTING BOLT THRU HOLE DIAMETER | Ø 1.06 (Ø 26.9) |
| 9 | FLEXURE THREAD, DEPTH & CBORE | 6.000-8 UN-3B Ψ 5.63 └─┐ Ø 6.03 Ψ 0.20 |
| 10 | BOLT HEAD HEIGHT | 1.00 (25.4) |
| 11 | BASE HEIGHT | 11.50 (292.1) |
| 12 | BASE PAD HEIGHT | 0.10 (2.5) |
| 13 | BASE PAD DIAMETER | Ø 10.55 (Ø 268.0) |
| 14 | BASE THREAD, DEPTH & COUNTERBORE | 6.000-8 UN-3B Ψ 11.00 └─┐ Ø 6.03 Ψ 0.20 |
| 15 | (8) LIFTING HOLES SPACED AT 90° | 0.750-10 UNC Ψ 0.88 |
| 16 | LIFTING HOLE OFFSET ANGLE | 38.6° |
| 17 | ROTATIONAL CLEARANCE | 11.31 (287.3) MIN |
| 18 | CONNECTOR TYPE | PT02E-12-8P |
| 19 | IDENTIFICATION LABEL INCLUDING: MODEL, CAPACITY, SERIAL NUMBER & OUTPUT | |



2. DIMENSIONAL TOLERANCE: ± 0.01 (± 0.3).
1. DIMENSIONS IN INCHES & (mm).

Connector Wiring
Fig.2

| | <u>Pin</u> |
|-----------------------------|------------|
| Excitation (+) | A |
| Signal (+) | B |
| Excitation (-) | C |
| Signal (-) | D |
| (+) Excitation Sense | E |
| (+) Signal Sense | F |
| (-) Excitation Sense | G |
| (-) Signal Sense | H |

Note:

A wired to E at bridge
B wired to F at bridge
C wired to G at bridge
D wired to H at bridge

No Temperature Compensation
resistors in series with connector
wires.