

WIA Adult Program

Check us on our website at http://www.doleta.gov/programs/general_info.cfm

Analysis

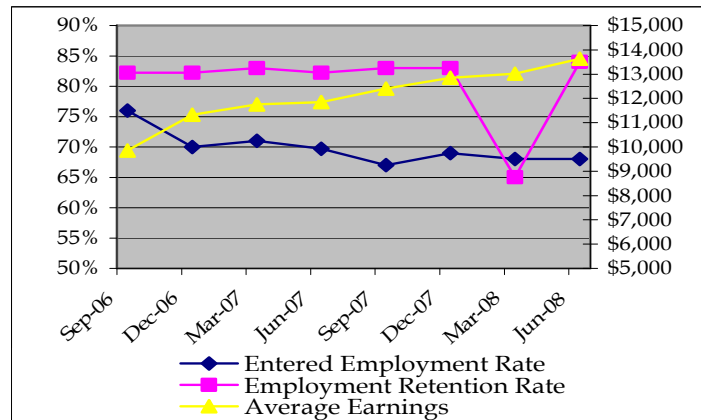
- The performance results indicate that the WIA Adult program was three percentage points shy of achieving its PY 2007 target goal of 71 percent for the entered employment rate.
- The program surpassed its target goal of 83 percent for the employment retention rate by one percentage point.
- The average earnings rate for the WIA Adult program in PY2007 stands at \$13,641, which exceeded the PY 2007 goal of \$12,045.
- Increases/Decreases from one year ago:
 - While the retained employment rate, (ERR) went up two percentage points, the entered employment rate, (EER), went down two percentage points from June 2007 to June 2008.
 - Average earnings went up 15 percent during June 2007 to June 2008.

Charting Program Performance

Current Quarter/One Year Ago

Performance Measure	6/30/2008	6/30/07
Entered Employment	68%	70%
Retained Employment	84%	82%
Average Earnings	\$13,641	\$11,850

Performance in the Past Eight Quarters



Program Description

Adult Services encompass workforce investment programs and initiatives that help millions of adult workers receive workforce preparation assistance. These programs also help employers find the workers they need. They promote and facilitate an integrated public workforce system, offering a full array of workforce education, training and information services. Adult programs serve the broadest range of individuals, including Unemployment Insurance claimants, veterans, people with disabilities, dislocated workers, migrant and seasonal farm workers, Indian and Native Americans, workers age 55 or older, and incumbent workers.

Other Program Highlights

ETA is utilizing a regional approach through WIRED (Workforce Innovation in Regional Economic Development) to align its investments in adult program workforce preparation with postsecondary education and with industry-recognized credentials in high-growth industries. WIRED focuses on the role of talent development for high-skill, high-wage opportunities for American workers.