



Waterfall Trail



Shawnee National Forest

Mississippi Bluffs Ranger District

2007

This trail meanders through the hardwood forests is on an old road bed. This trail can provide loop opportunities for the Kinkaid Lake Trail System.

Safety

Carrying a map, compass and plenty of water is recommended. Be aware of hunters during hunting season. Poisonous snakes and poison ivy are present in the area. The trail tread may become slick when wet.

Surrounding Area

Johnson Creek Recreation Area, Gum Ridge Trail, Kinkaid Lake Trail System, and the Buttermilk Trail.

Emergencies

The nearest hospital is St. Joseph's in Murphysboro. The nearest public phone is in Murphysboro.

For More Information:

Mississippi Bluffs Ranger District

521 North Main

Jonesboro, IL 62952

(618) 833-8576 (618) 687-1731

www.fs.fed.us/r9/forests/shawnee

Length: Approximately 4 miles

Travel Time: 2 hours

Surface Type: Natural and several sections of gravel

Difficulty Level: Moderate

Recommended Season: Year Round

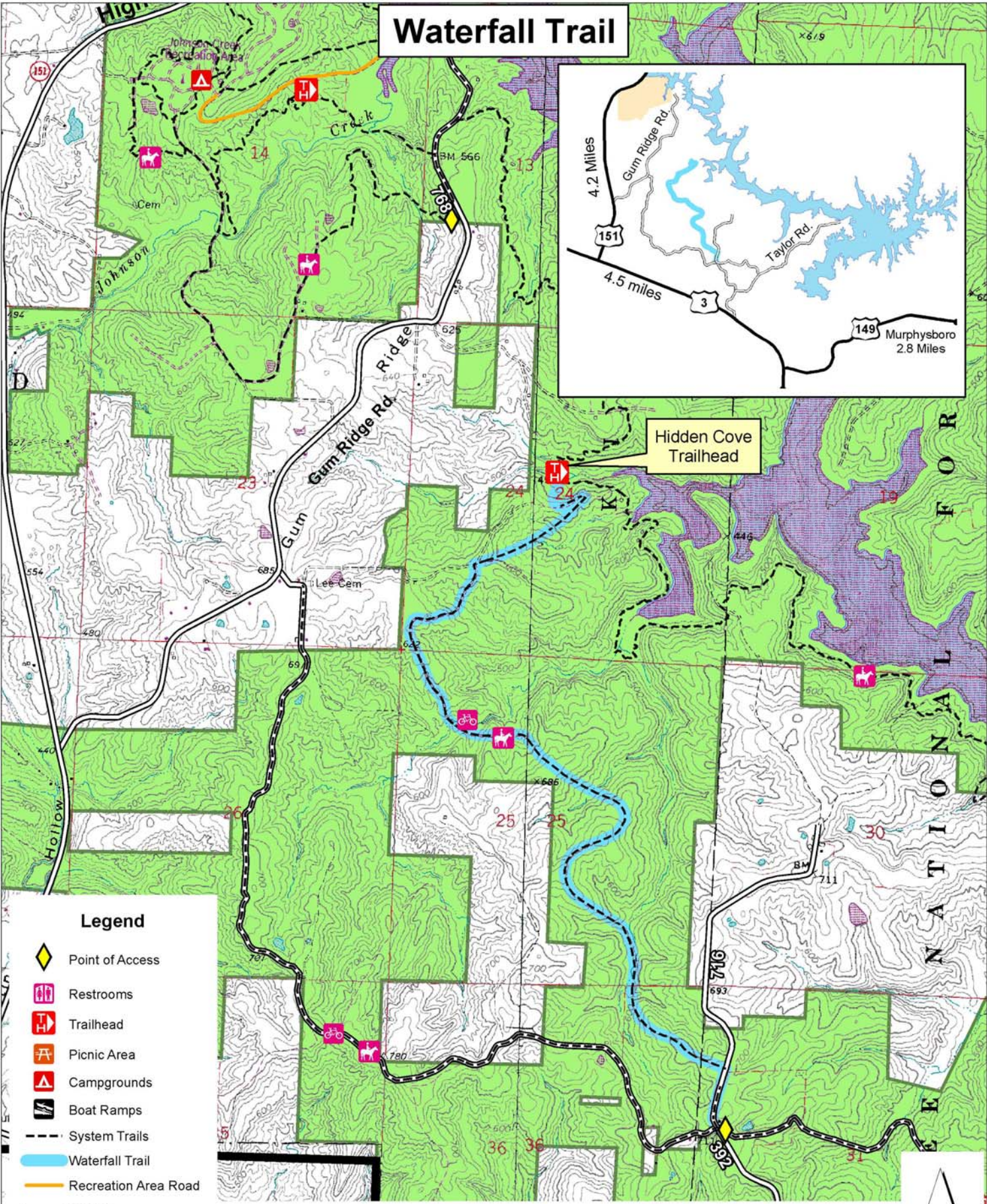
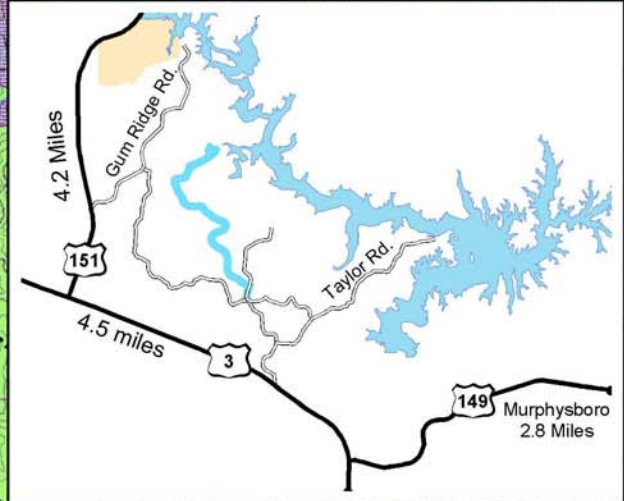
Facilities: Small gravel parking area at Hidden Cove Trailhead.

Access: Rt. 3 to Rt.151, turn north travel approximately 1 mile to Gum Ridge Road, turn east follow the Gum Ridge Road approximately 2.1 miles, turn south on Blue Bird Lane, follow gravel road to parking lot (dead end). Rt. 3 north to Buttermilk Hill road turn north, travel approximately 1.25 miles to a gate on the west side of the road.

Hiker/Equestrian Trails -  white diamond

Trail Ethics: Pack it in, Pack it out.

Waterfall Trail



Legend

- Point of Access
- Restrooms
- Trailhead
- Picnic Area
- Campgrounds
- Boat Ramps
- System Trails
- Waterfall Trail
- Recreation Area Road
- Roads
- National Forest Land
- Forest Boundary

Contour interval = 20 feet
 0 0.3 0.6 Miles

