



Panther Den



Shawnee National Forest

Mississippi Bluffs Ranger District

2008

Panther Den was designated a wilderness area by Congress in 1990. Of the 1,195 total acres, 1,081 acres are in the Shawnee National Forest with the remaining portion in the Crab Orchard National Wildlife Refuge. The Panther Den received its name from a rock formation known as the Panther Den that is located within the Wilderness area.

Safety

Carrying a map, compass and plenty of water is recommended. Be aware of hunters during hunting season. Poisonous snakes and poison ivy are present in the area. The trail tread may become slick when wet.

Surrounding Area

Devils Kitchen Lake, Little Grassy Lake and Giant City State Park.

Emergencies

The nearest hospital is Carbondale Memorial in Carbondale, IL. The nearest public phone is in Giant City State Park.

For More Information:

Mississippi Bluffs Ranger District
521 North Main Street
Jonesboro, IL 62952

(618) 833-8576 (618) 687-1731

www.fs.fed.us/r9/forests/shawnee

Length: Several trails and loops are in this area. Combinations of these can be 2 to 10 miles in length.

Travel Time: Depends on which loops are included. All loops combined take 12 hours to complete.

Surface Type: Dirt and rock

Difficulty Level: Moderate to Difficult

Recommended Season: Year Round

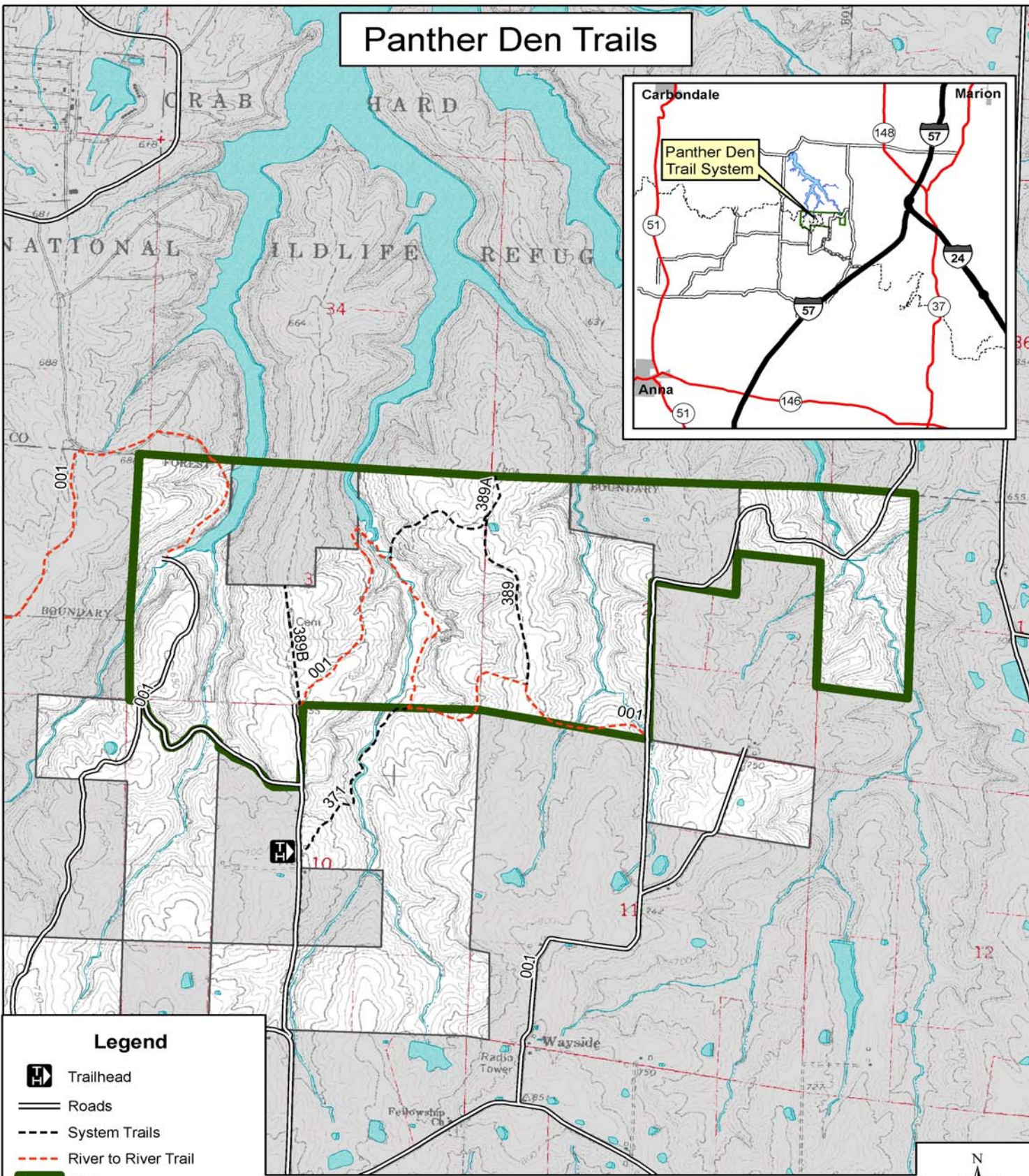
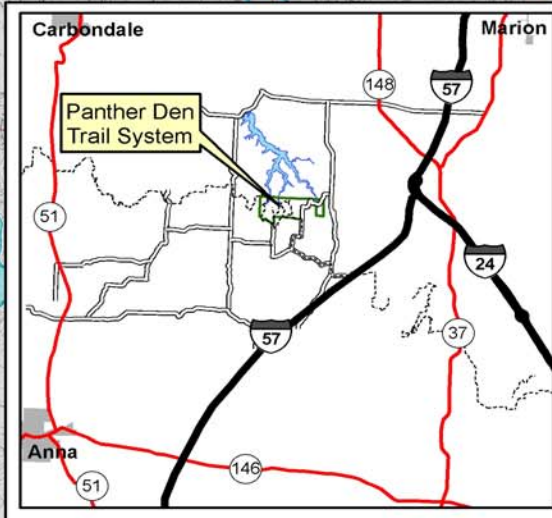
Facilities: Large gravel parking area off of Panther Den Lane.

Access to trailhead: From Rt. 13 in Carbondale, take Giant City Road south to Grassy Road and turn left. Continue to Rocky Comfort Road and turn right. Follow to Panther Den Road and turn left. Take to Panther Den Lane and turn left. Drive back to parking lot on left hand side.
From I-57, take exit 40 (Goreville exit) west onto Goreville Road and travel about 1 mile to North Lick Creek Road. Turn right and travel to Mt. Hebron Road and turn left. Continue to Robinson Hill Road and take a right. After curve in road, turn right onto Panther's Den Lane. Drive back to parking lot on left hand side.

Hiker/Equestrian Trails -  white diamond

Trail Ethics: Pack it in, Pack it out.

Panther Den Trails



Legend

- Trailhead
- Roads
- System Trails
- River to River Trail
- Wilderness
- National Forest Land
- Non National Forest Land

Contour interval = 20 feet

