



Kaolin Trail



Kaolin Pond is a pit used in the production of high quality clay for pottery. The mining operation ceased in the 1950's and the rights to the mine expired in 1990. The pit has silted in and filled with water to about 35 ft. deep. The trail starts west of the pond and branches east and west going to dead ends.

Safety

Carrying a map, compass and plenty of water is recommended. Be aware of hunters during hunting season. Poisonous snakes and poison ivy are present in the area. The trail tread may become slick when wet.

Surrounding Area

Pomona Natural Bridge, Cedar Lake, Clear Springs Wilderness and Bald Knob Wilderness.

Emergencies

The nearest hospital is Union County Hospital in Anna. The nearest public phone is in Cobden.

For More Information

Mississippi Bluffs Ranger District
521 North Main
Jonesboro, IL 62952
(618) 833-8576 (618) 687-1731
www.fs.fed.us/r9/forests/shawnee

Length: .7 miles

Travel Time: 1 hour

Surface Type: Natural

Difficulty Level: Moderate

Recommended Season: Year Round

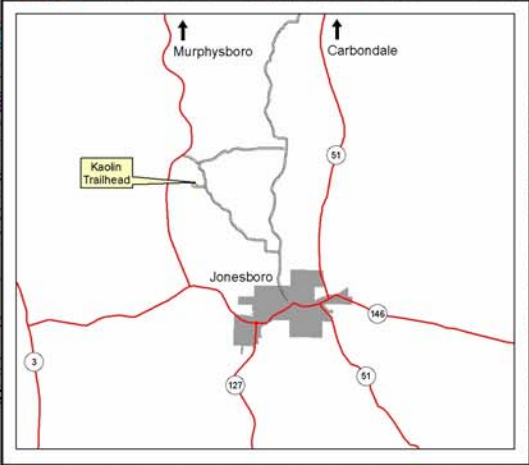
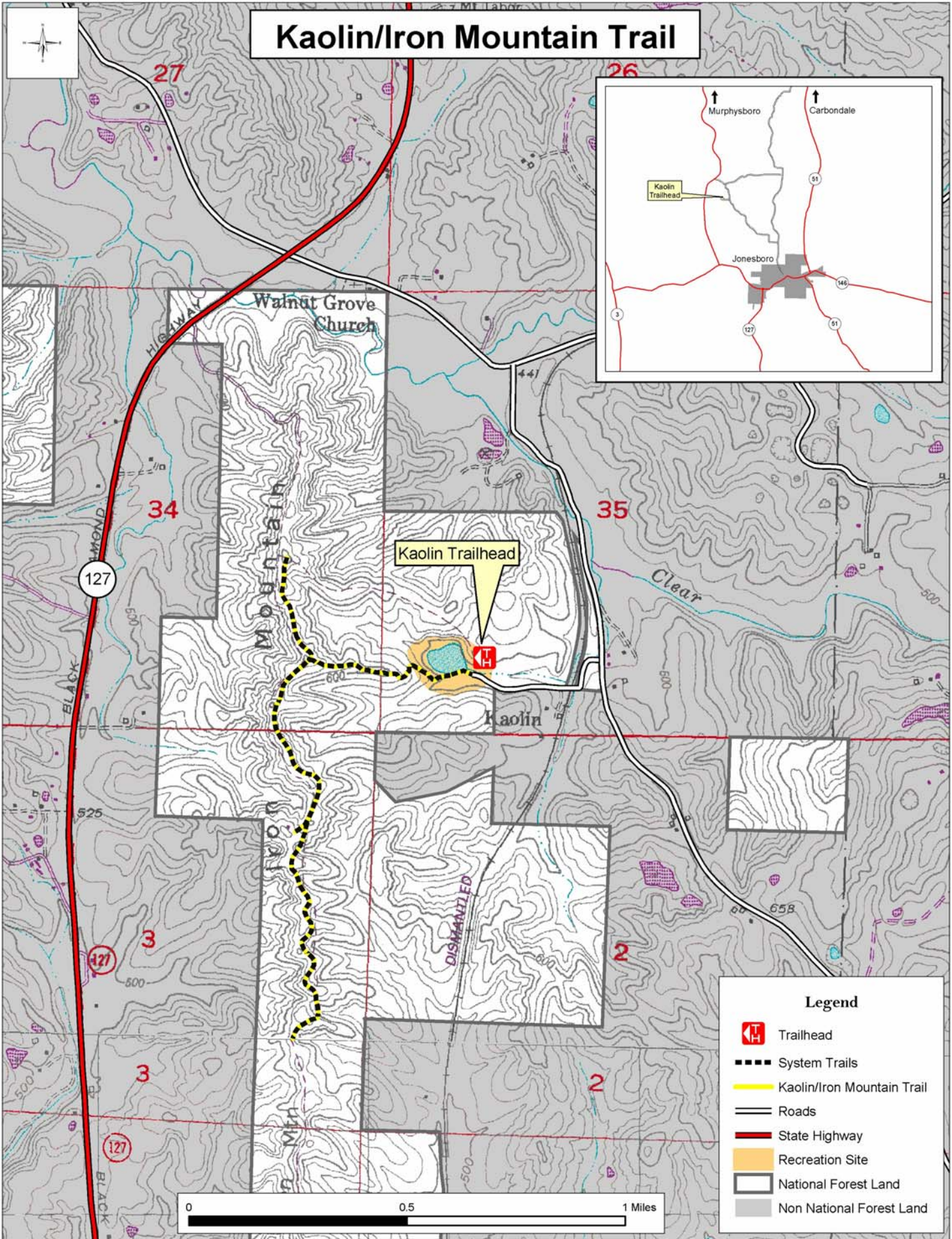
Facilities: Picnic tables, trash containers and a gravel parking area.

Access: Rt. 127 turn east on Mt. Glen Road, 5 miles south of Alto Pass or 5 miles north of Rt. 146, go 3/4 miles and turn right on Kaolin Rd. go 3/4 miles turn right to Kaolin Pond Trail Head.

Hiker/Equestrian Trails -  white diamond

Trail Ethics: Pack it in, Pack it out.

Kaolin/Iron Mountain Trail



Legend

- Trailhead
- System Trails
- Kaolin/Iron Mountain Trail
- Roads
- State Highway
- Recreation Site
- National Forest Land
- Non National Forest Land

