



Horse Creek Trail



Shawnee National Forest

Mississippi Bluffs Ranger District

2007

The west half of the trail has wide ridge tops with deep ravines. The east half of the trail is mostly lowland, meandering in and out of Horse Creek.

Safety

Carrying a map, compass and plenty of water is recommended. Be aware of hunters during hunting season. Poisonous snakes and poison ivy are present in the area. The trail tread may become slick when wet.

Surrounding Area

Bean Ridge, Grapevine Trail and Ripple Hollow Trail.

Emergencies

The closest hospital is in Cape Girardeau, MO. The closest public phone is in McClure.

For More Information:

Mississippi Bluffs Ranger District
521 North Main
Jonesboro, IL 62952

(618) 833-8576 (618) 687-1731

www.fs.fed.us/r9/forests/shawnee

Length: 6 mile loop

Travel Time: Approx. 3 hours

Surface Type: Natural dirt and rock, old road bed in places

Difficulty Level: Moderate to difficult

Recommended Season: Year Round

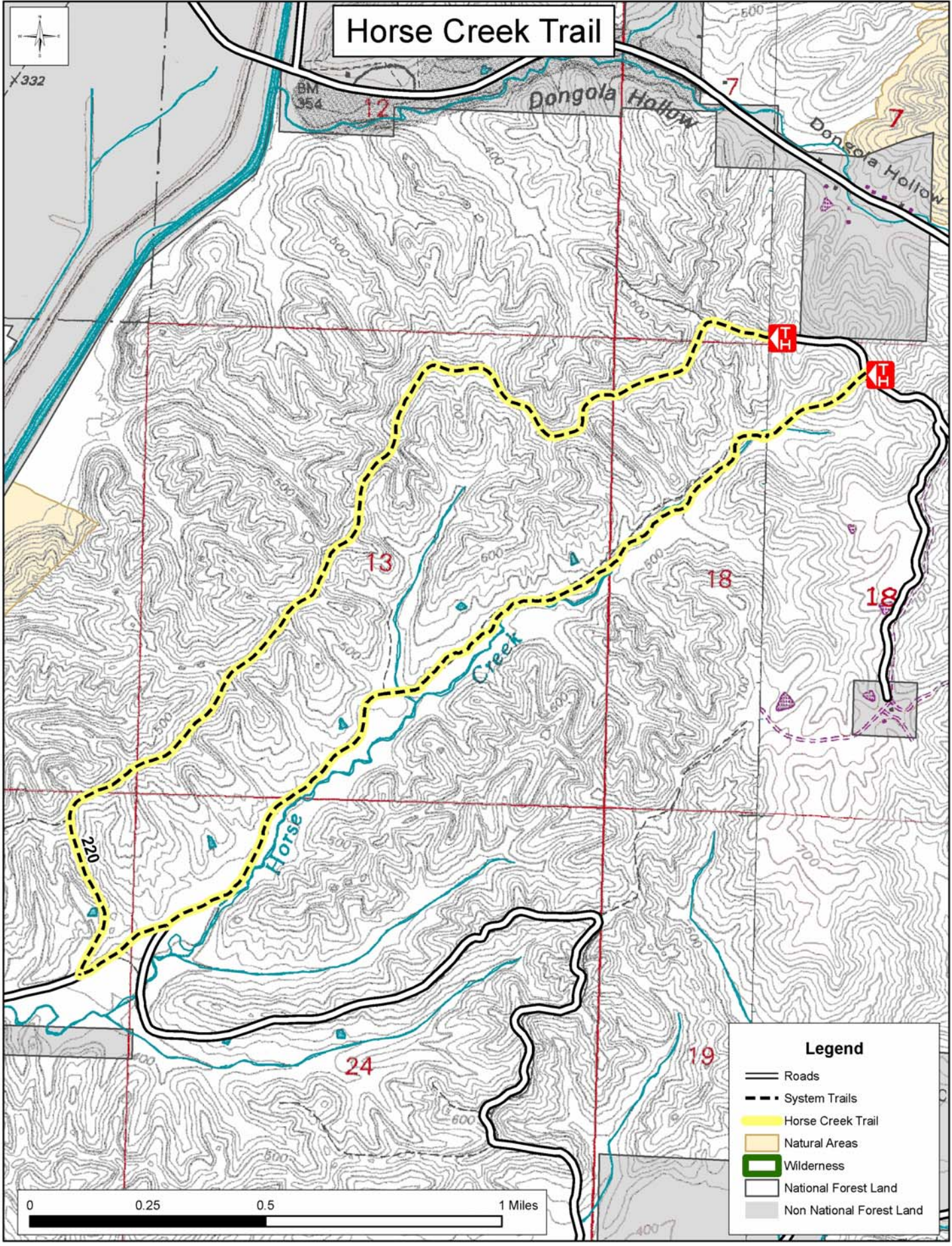
Facilities: East and west trailheads are graveled, limited parking and turn around area.

Access: Rt. 3 at McClure, take Grapevine Trail Road Approx. 4.2 miles to Oxford Lane (FR220). Follow the road to the trailhead.

Hiker/Equestrian Trails -  white diamond

Trail Ethics: Pack it in, Pack it out.

Horse Creek Trail



Legend

- Roads
- - - System Trails
- Horse Creek Trail
- Natural Areas
- Wilderness
- National Forest Land
- Non National Forest Land

