



# Buttermilk Hill Trail



Shawnee National Forest

Mississippi Bluffs Ranger District

2008

This single track trail meanders along the side of the hill above Kinkaid Lake. Portions of this trail are very narrow and steep. This trail links into the Kinkaid Lake Trail System to the west and the Crisenberry Dam Trail to the east.

**Safety:** Carrying a map, compass and plenty of water is recommended. Be aware of hunters during hunting season. Poisonous snakes and poison ivy are present in the area. The trail tread may become slick when wet.

**Surrounding Areas:** Johnson Creek Recreation Area, Kinkaid Lake Trail System, Waterfall Trail, Deer Run Trail, and Gum Ridge Trail

## Emergencies:

The nearest hospital is St. Joseph's in Murphysboro. The nearest public phone is in Murphysboro.

For More Information:

Mississippi Bluffs Ranger District  
521 North Main  
Jonesboro, IL 62952  
(618) 833-8576 (618) 687-1731  
[www.fs.fed.us/r9/forests/shawnee](http://www.fs.fed.us/r9/forests/shawnee)

Length: Approximately 4.5 miles  
*\*see note on map regarding trail closure*  
Travel Time: 4 hours

Surface Type: Natural and gravel

Difficulty Level: Difficult

Recommended Season: Year Round

Facilities: Large gravel parking lot

Access to -

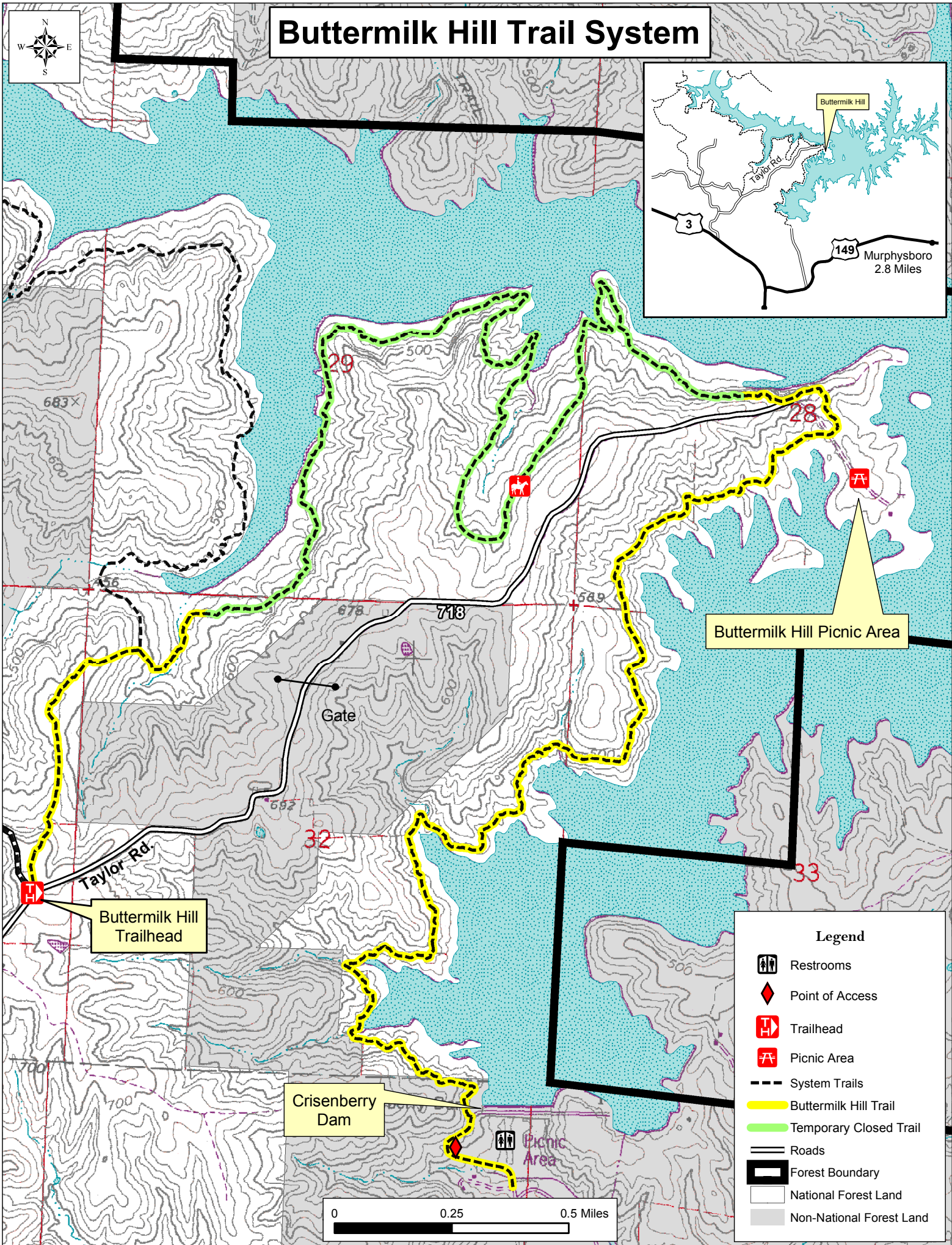
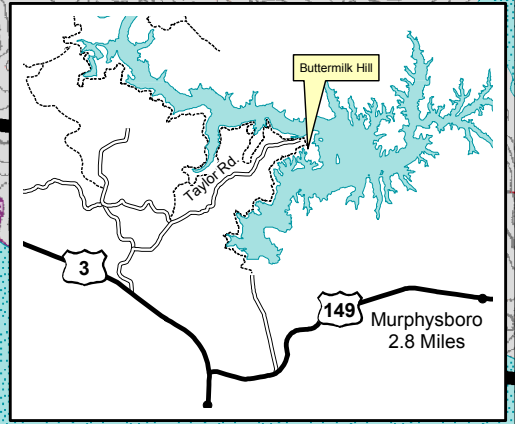
Buttermilk Hill Trailhead: From Rt. 3, turn north onto Buttermilk Hill Road and travel 1 mile to Taylor Road. Turn east and travel approximately 1 mile to Buttermilk Trailhead.

Crisenberry Dam Trailhead: From Rt. 149, turn north onto Spillway Road. Travel back 1 1/2 miles to parking lot by the Crisenberry Dam gate. Access the trailhead by following road west of dam about .2 miles.

Hiker/Equestrian Trails -  white diamond

Trail Ethics: Pack it in, Pack it out.

# Buttermilk Hill Trail System



Buttermilk Hill Picnic Area

Buttermilk Hill Trailhead

Crisenberry Dam

**Legend**

- Restrooms
- Point of Access
- Trailhead
- Picnic Area
- System Trails
- Buttermilk Hill Trail
- Temporary Closed Trail
- Roads
- Forest Boundary
- National Forest Land
- Non-National Forest Land

