



Bald Knob Cross Trail



Shawnee National Forest

Mississippi Bluffs Ranger District

2007

Bald Knob Cross is at the north end of the trail. When the leaves are off, there is an excellent view of Clear Creek Valley. You will be exposed to the Ozark-like terrain with steep rocky slopes.

Safety

During certain times of the year, there is a heavy fog. This is a popular area with deer and turkey hunters. Beware of steep slopes, loose rocks and slick trail tread conditions.

Surrounding Area

LaRue-Pine Hills/Otter Pond Research Natural Area, Clear Springs Wilderness and Bald Knob Wilderness.

Emergencies

The nearest hospital is Union County Hospital in Anna. The nearest public phone is in Alto Pass.

For More Information:

Mississippi Bluffs Ranger District

521 North Main

Jonesboro, IL 62952

(618) 833-8576 (618) 687-1731

www.fs.fed.us/r9/forests/shawnee

Length: loop 3 miles

Travel Time: 1 Hour or less

Surface Type: Rock and Dirt

Difficulty Level: Difficult

Recommended Season: Year Round

Facilities: Trailhead at north and south end of trail.

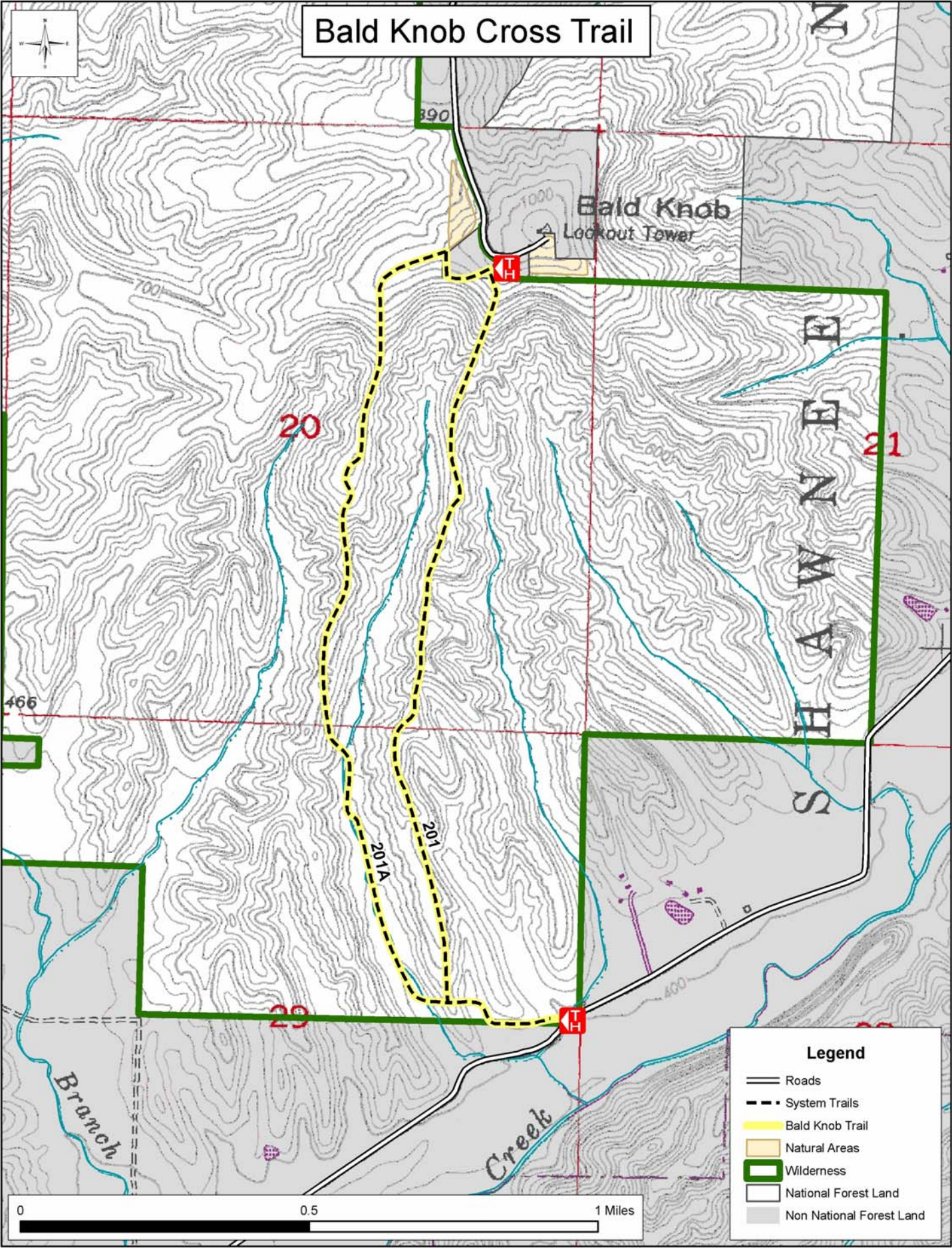
Access: North-end trailhead Rt. 127 to Alto Pass, follow signs to Bald Knob Cross. It is 6 miles from Rt. 127.

Trailhead is approx. 100 yards off the road at the edge of the tree line. South-end trailhead Rt.127 to Alto Pass to Brown Section Road. Go 1.6 miles to Rhine Road. There is a sign and pull-off for parking.

Hiker/Equestrian Trails -  white diamond

Trail Ethics: Pack it in, Pack it out.

Bald Knob Cross Trail



Legend

- Roads
- - - System Trails
- Bald Knob Trail
- Natural Areas
- ▭ Wilderness
- National Forest Land
- Non National Forest Land