



Located on a northwest finger of beautiful Kinkaid Lake, Johnson Creek Recreation Area offers a variety of outdoor activities. Here you will find something for everyone in the family, from camping and swimming to hiking along the lake, biking the scenic roads and horseback riding.

Camping

Johnson Creek group campground is one of two campgrounds in the forest that caters to equestrians. The campground features large sites with tables, fire rings, hitching posts, highline poles and a dump station. Several trails lead from the campground and link to the extensive Kinkaid Lake trail system.

Water Activities

The two-lane boat launch and trailer parking area are located in the day-use area and open year-round. Johnson Creek beach and picnic area are nearby, with plenty of grassy areas for play and relaxation. There are no lifeguards at the beach. No glass or metal containers are allowed on the beach or in the water. Swimming is allowed only in designated swim area. Kinkaid Lake, being one of the few large lakes (2750 acres) in southern Illinois, is a popular location for fishing, swimming, sunbathing, water skiing, boating, canoeing, kayaking and waterfowl hunting.

Surrounding Area

Kinkaid Lake and trails, Lake Murphysboro State Park, Big Muddy River, Oakwood Bottoms Greentree Reservoir and Fountain Bluff.

Emergencies

The nearest hospital is St. Joseph's in Murphysboro. The nearest public phone is located in Ava.

For More Information

Mississippi Bluffs Ranger District
521 North Main
Jonesboro, IL 62952
(618) 833-8576 (618) 687-1731
www.fs.fed.us/r9/forests/shawnee


Access: From Murphysboro: Take Highway 149 west 7 miles to Highway 3; then north 4.5 miles on Highway 3 to Highway 151. Turn right onto Highway 151 and go 4 miles to recreation area.

From St. Louis: Take either Highway 3 or Highway 4 south to Chester, IL. Then south 18 miles on Highway 3; turn left onto Highway 151 and go 4 miles to recreation area.

Facilities: Swimming area, picnic area with shelters and grills, beach house, boat launch, fishing pier, trails, group campground with a dump station, equestrian camping and trailhead parking which accommodates horse trailers. (No boat rentals available)

Recommended Season: Spring, summer and fall
Campgrounds and boat launch are open year-round.

Fees: *Double Campsites
*Triple Campsites
*Call for fee information.

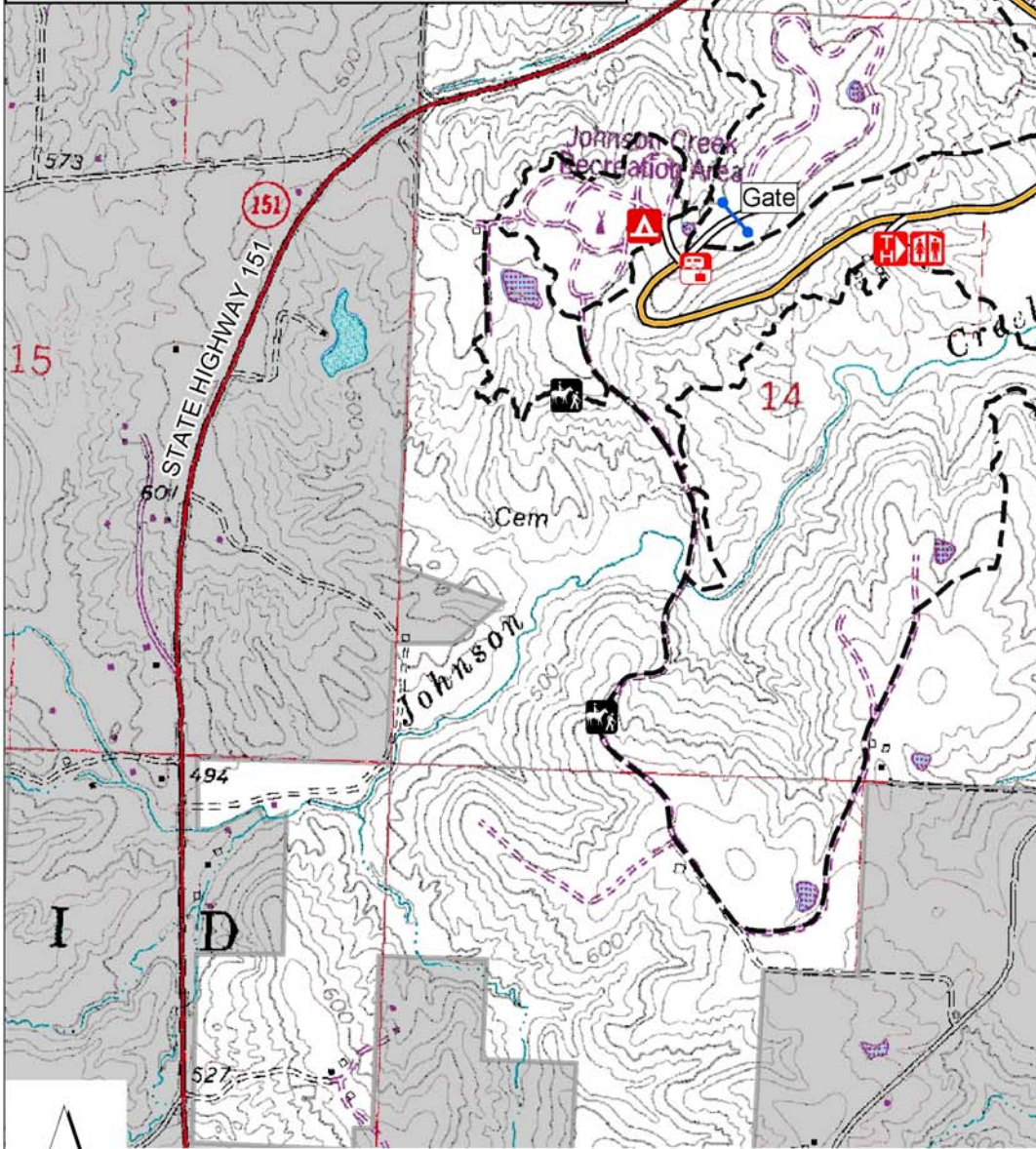
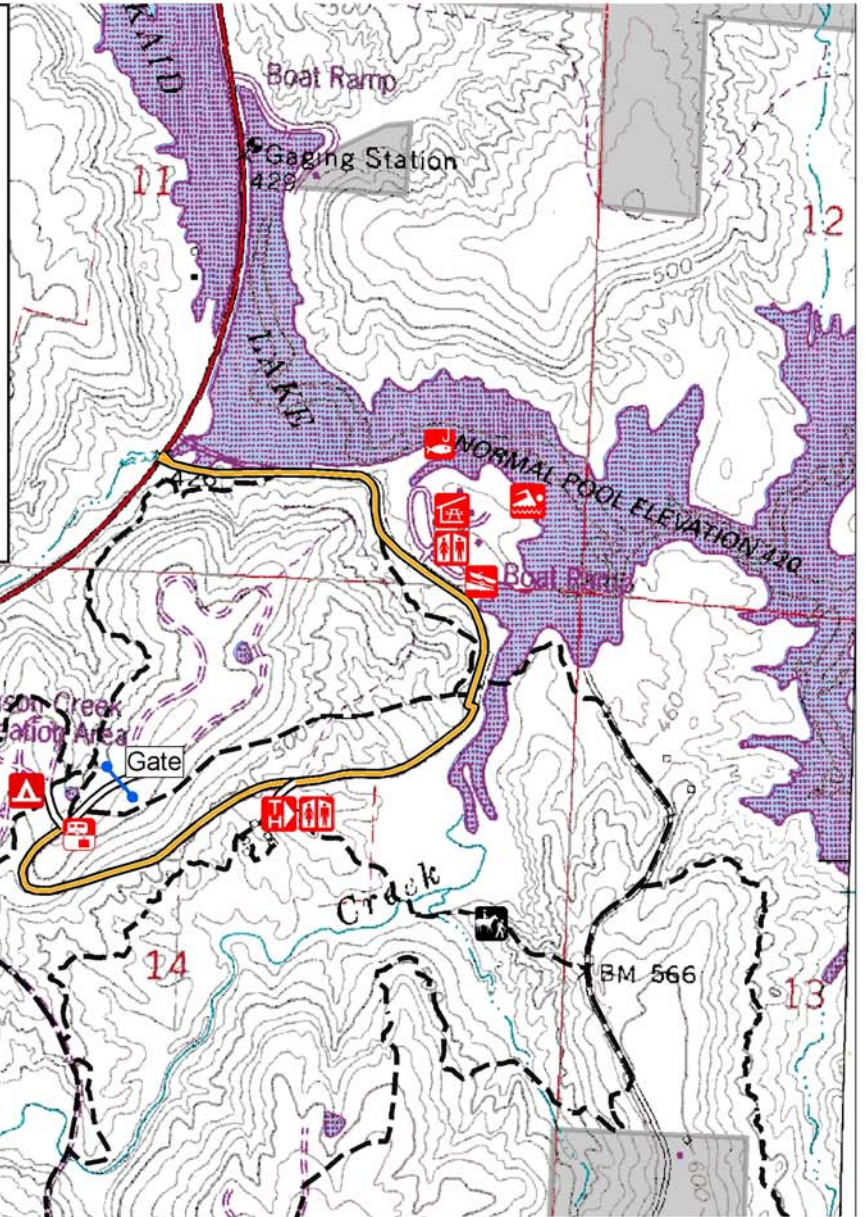
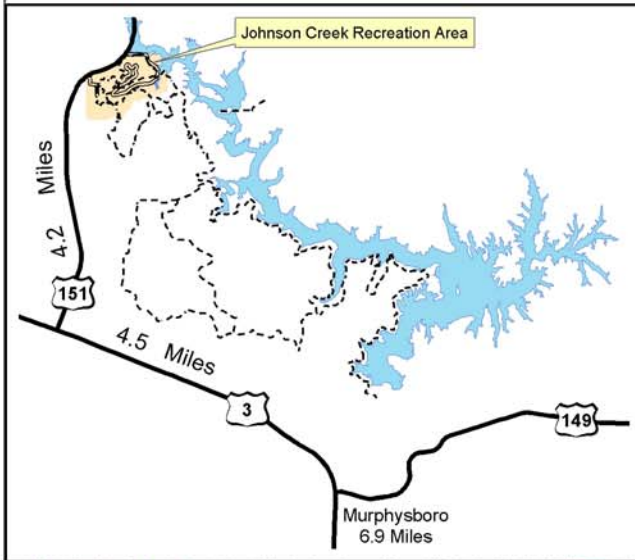
Trail Markings: Hiker/Equestrian Trails-  white diamond with trail numbers.

Safety:
For your safety, forest employees and law enforcement officers patrol the recreation area. Be aware that Kinkaid Lake becomes congested during the summer months. Use caution while boating and recreating on the water.

- Regulations:**
- 1) Picnic area is open 6am – 10pm.
Beach area is open 10am to dusk (Mem. Day -Labor Day)
 - 2) Swimming allowed at beach only.
 - 3) Pets must be leashed, and are not allowed on the beach or in the designated swim area.
 - 4) Use trash receptacles in developed areas.
Pack It In, Pack It Out, along trails.
 - 5) Camp only at designated sites.
 - 6) No reservations, campsites are available on a first-come, first-serve basis.
 - 7) No horseback riding is allowed in the day-use areas.

A complete list of site regulations is posted on each bulletin board and at fee stations.

Johnson Creek Recreation Area



Legend

- Trailhead (Trailer Parking)
- Restrooms
- Picnic Shelter
- Campground
- Dump Station
- Fishing Pier
- Boat Ramps
- System Trails
- Recreation Area Road
- Roads
- National Forest Land
- Non National Forest Land



Contour interval = 20 feet

