

U.S. DEPARTMENT OF COMMERCE National Oceanic and Atmospheric Administration National Weather Service MARINE WEATHER SERVICE CHART ALASKAN WATERS NOT TO BE USED FOR NAVIGATION

Table with 4 columns: Location, Announce/Monitor, Broadcast, Local Times. Lists weather service offices and their broadcast schedules.

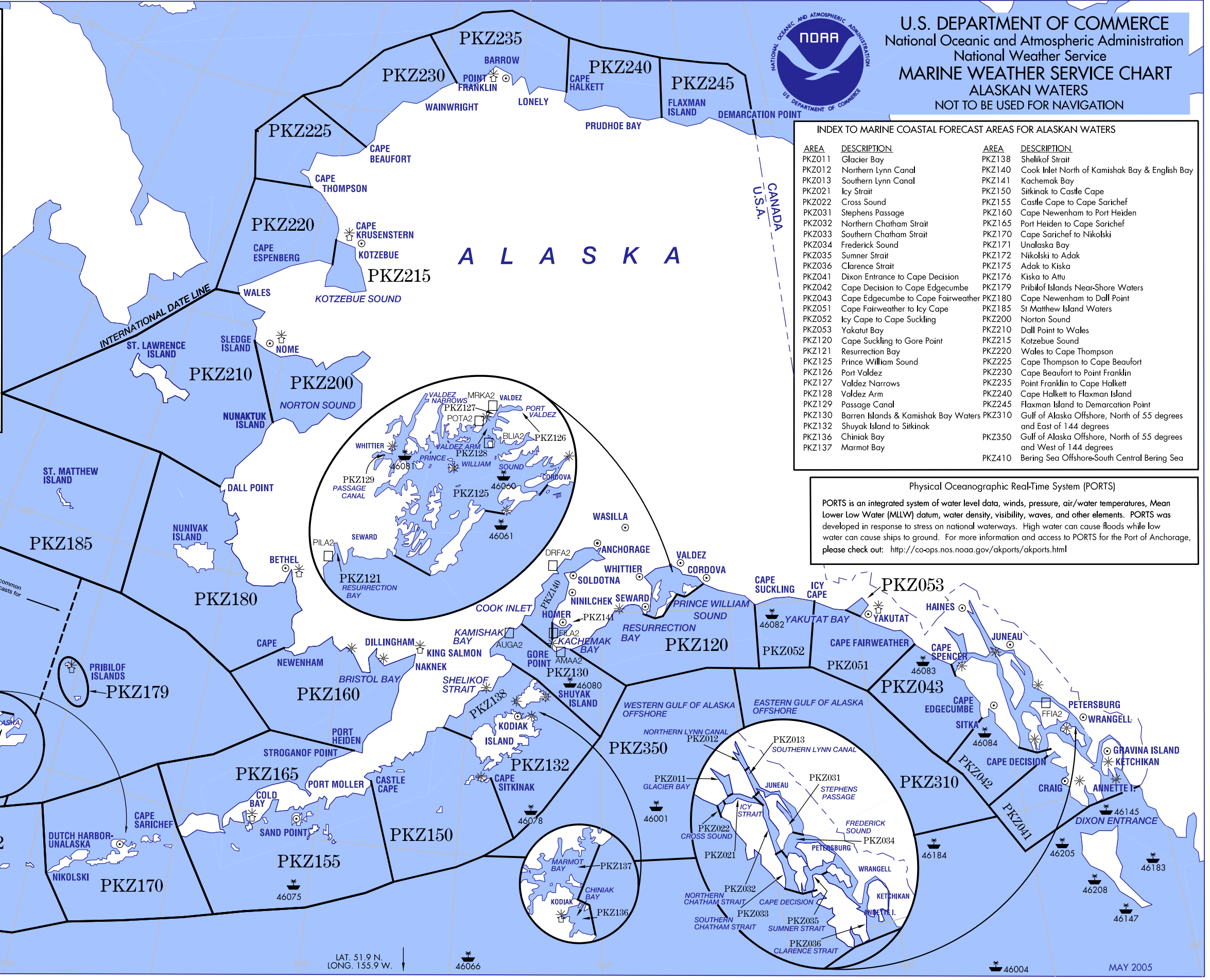
The Following Weather Service Offices Also Provide VOICE WEATHER BROADCASTS AND RECEIVE MARINE WEATHER OBSERVATIONS ON HF/USB (4125 kHz)

Table with 3 columns: Location, Local Times, HF Call Sign. Lists HF broadcast stations and their call signs.

Stations request marine weather observations (MAREPs) before each broadcast. Radios are monitored during hours that offices are open and personnel are available.

MARINE WEATHER REPORTING PROGRAM The National Weather Service (NWS) has established a nationwide Mariner Report Program - MAREP - to help improve marine forecasts, warnings and services.

Port Meteorological Officer, Anchorage 907-271-5135



INDEX TO MARINE COASTAL FORECAST AREAS FOR ALASKAN WATERS. Table with 4 columns: AREA, DESCRIPTION, AREA, DESCRIPTION. Lists 40 forecast areas and their descriptions.

Physical Oceanographic Real-Time System (PORTS) PORTS is an integrated system of water level data, winds, pressure, air/water temperatures, Mean Lower Low Water (MLLW) datum, water density, visibility, waves, and other elements.

LEGEND Table with 4 columns: Symbol, Description. Defines symbols for Coastal Marine Automated Network (CMAN) Station, NOAA Data Buoy, NOAA Weather Radio, USCG High Sites, and HF/VHF Voice Broadcasts.