

W BLM yoming

Report to the Public

2007



BLM Wyoming

Wyoming is rural, rugged, independent, and known for its rough environment and hard-working people. It is the 9th largest state, covered by vast open spaces, high desert plains, formidable mountains, badlands and sand dunes, yet it ranks 50th in population.

BLM manages about 18.4 million surface acres and 41.6 million acres of subsurface mineral estate in Wyoming, primarily in the western two-thirds of the state. BLM Wyoming also manages small, scattered tracts of public land in Nebraska.

Minerals

BLM lands in Wyoming contain world-class energy and mineral resources that are crucial to the national interest. BLM is dedicated to providing energy as part of its multiple-use mandate and to maintain the quality of life that citizens of Wyoming and the rest of the United States enjoy.

There are more than 19,500 federal oil and gas leases covering approximately 14 million acres of federal land. Wyoming leads the country in federal oil production, producing 30 million barrels of oil per year amounting to approximately 55 percent of Wyoming's total oil production and 29 percent of all federal onshore oil production. Federal natural gas production in Wyoming, including coalbed natural gas totaled 1,393 billion cubic feet in fiscal year 2007 (FY07) or approximately 63 percent of the state's total natural gas production.

Wyoming also leads the nation in coal production, providing coal to 29 states. Wyoming coal reserves are estimated to last 500 years at the current rate of production, earning Wyoming the unofficial title of "BTU capital of the world." Wyoming has the ten largest active coal mines in the United States with federal coal reserves being extracted in all ten mines.

Economy

Nearly half of the revenues from federal mineral leases, royalties and bonuses go to the state of Wyoming. Wyoming received about 47 percent of the total mineral revenue-sharing disbursements made to all 50 states in FY07, amounting to more than \$925 million or about \$1,850.00 per Wyoming resident.

Mineral revenue plays another essential role in Wyoming's economy. Driven by the mining industry, personal income in Wyoming has risen faster than almost any other state. Due in large part to increased mineral production, Wyoming's economy has remained stable during national recessions and has been growing steadily since 1987. As a result of mineral taxation and revenues from public lands, Wyoming has no state income tax and is one of the few states in the country to enjoy a budget surplus.

Recreation

Tourism is the state's second-largest industry and relies on BLM lands. In the fast-growing West, public lands are especially valuable for the open space and recreational opportunities they provide. Though the state's population is less than half a million, almost two million visitor days were spent on BLM lands.

Report to the Public 2007

Increasingly, visitors who come to Wyoming to visit its national parks and forests are discovering the unheralded beauty and openness that public lands provide. Visitors contribute more than \$126 million annually to Wyoming's economy through hunting and wildlife-related activities, camping, and heritage-based tourism. BLM Wyoming boasts more than 1,400 miles of national historic trails: the Oregon, California, Mormon Pioneer and Pony Express. The National Historic Trails Interpretive Center in Casper, Wyo., opened in 2002 and has increased Casper tourism and enhanced the public's understanding of westward migration.

Wyoming is also known for its world-class fishing and hunting opportunities. BLM Wyoming's lands contain nearly 37,000 acres of lakes and reservoirs, 92,000 acres of riparian areas and wetlands and more than 2,400 miles of streams open to fishing. Some of the state's most renowned recreational resources are its cold-water trout fisheries, which provide high-quality angling experiences. Wyoming boasts the largest single-state population of pronghorn antelope, the largest single desert elk herd and the largest single-state sage-grouse population.

Wyoming is also fortunate to have a stretch of the 3,100-mile long Continental Divide National Scenic Trail, which runs from Canada to Mexico. In Wyoming, the trail passes through BLM-managed land, Yellowstone National Park and three national forests.

Serving Communities

Ranching is Wyoming's third-largest industry. Raising livestock is a mainstay of the state's economy. Wyoming's ranches and farms are also the largest in the nation, averaging about 3,800 acres. More than 2,500 grazing operators in the state depend on public land.

Without question, BLM's contributions to the state and local economies go well beyond revenue sharing, particularly when the benefits that communities gain from BLM's resource management and conservation efforts are considerable. BLM's activities not only benefit recreationists and traditional land users who hold grazing permits or mineral leases, but they also contribute directly to the viability of the state's economy. BLM activities provide rights-of-way for fiber-optic cables, telephone lines, power lines, and energy pipelines, ensuring vital services for the state's residents and delivery systems to transport Wyoming's energy throughout the country.

Planning

None of these uses of public lands can take place without a plan. Land use plans and planning decisions are the basis for every BLM action. They are also the primary tools for giving the public a voice in BLM's land and resource management programs. BLM works closely with local and state governments and the private sector to determine how best to manage public lands to meet the needs of western communities and the nation. The agency strives to meet these needs by managing resources for outdoor recreation, livestock grazing, energy and mineral development and by conserving natural, historical, and cultural resources. BLM's plans ensure that land use allocation decisions strive to maintain integrity and sustainability in an environment of increasing scrutiny.

BLM Wyoming

BLM is currently updating several of its resource management plans (RMPs). Wyoming BLM strives to balance the state's natural wonders and mineral resources as it updates all of its land use plans. Issues driving these planning efforts include air quality standards, water quality standards, applications to expand existing coal mines, increasing oil and gas development and reasonably foreseeable scenarios for all mineral development.

Public lands offer wide-open spaces and other natural resource benefits that are crucial to the quality of life and proud tradition of Wyoming citizens. It is critical that BLM's land use plans respect these concerns so the agency can determine the most appropriate uses of public lands.

Wyoming Figures Fiscal Year 2007

Federal Collections from BLM Managed Lands & Materials

Grazing Fees	\$	1,917,160
Recreation & Use Fees	\$	192,978
FLPMA Right-of-Way Rent	\$	2,226,451
Sale of Land & Materials	\$	1,389,699
Timber Receipts (public domain)	\$	315,822
Mining Claim Holding Fees & Service Charges	\$	2,171,210
Mineral Royalties, Rents, & Bonuses	\$	1,862,789,851
Total	\$	1,871,003,171

Direct BLM Financial Transfers to Wyoming (including NE)

Payment in Lieu of Taxes (PILT)	\$	15,362,731
Grazing Fees	\$	38,427
Proceeds of Sales (Lands & Minerals)	\$	55,588
Mineral Royalties, Rents & Bonuses	\$	925,261,907
Total	\$	940,718,653

BLM Wyoming Mineral Revenues

Total Mineral Royalties	\$	1,481,943,164
Total Amount of Oil Produced (barrels)		29,844,078
Total Amount of Natural Gas Produced (cubic feet)		1,392,972,656
Total Mineral Royalties from Combined Oil and Gas	\$	1,045,114,191
Total Amount of Coal Produced (tons)		366,993,128
Royalties from Coal	\$	442,219,845

Report to the Public 2007

BLM Investment in Wyoming (Including NE)

Management of Land and Resources	\$ 71,529,691
Land Acquisition	\$ 2,253,500
Range Improvements	\$ 1,000,555
Construction and Access	\$ 18,094
Wildland Fire Preparedness	\$ 4,628,557
Wildland Fire Suppression	\$ 3,908,513
Wildland Fire Fuels	\$ 3,032,764
Energy Pilot Office Funding	\$ 4,005,881
Motorized Fleet	\$ 4,646,341
Reimbursables	\$ 1,868,825
Other	\$ 975,450
Total	\$ 97,868,171

Commercial Use Activity in Wyoming (Including NE) on BLM Managed Land

Grazing Permits and Leases	2,812 permits and leases; 1,941,952 animal unit months available
Wood Volume Sold	1,430,700 cubic feet, sales = \$303,990
Oil and Gas Leasing	2,272 new wells spudded; 4,230,403 acres in production status; 31,362 usable wells (federal only)
Coal Production	47 producing leases; 376,586,378 tons produced
Mineral Materials (salables)	165 permits issued; 3,481,052 cubic yards produced
Nonenergy Leasables	60 leases; 74,479 acres under lease
Exploration and Mining Activity (locatables)	8 notices reviewed, 4 Plans-of-Operation reviewed
Rights-of-Way	1,282 granted

Wild Horse and Burro Program in Wyoming (Including NE)

Animal	Estimated Current Population	Animals Taken Off Range	Number of Animals Adopted*
Wild horses	3,350	1,504	213
Wild burros	0	0	7

* Note: Some animals are not adopted the same year that BLM removes them from the range.

BLM Wyoming

Estimated Recreation Use in Wyoming (Including NE) on BLM Managed Land

Visitor Days

Boating- Motorized	9,939
Boating – Row, Float, or Paddle	107,968
Camping and Picnicking	465,437
Driving for Pleasure	114,907
Fishing	223,937
Hunting	188,861
Interpretation and Education	193,403
Nonmotorized Travel	173,502
Off-highway Travel	228,128
Snowmobile and Other Motorized Travel	24,077
Specialized Motor Sports, Events, and Activities	2,026
Specialized Nonmotor Sports, Events, and Activities	91,242
Swimming and Other Water Activities	1,431
Winter/Nonmotorized Activities	6,531
Total	1,831,389

Recreation Fee Demonstration Program 10 Projects, \$192,978 Collected

Buffalo Field Office	Newcastle Field Office
Casper Field Office/Muddy Mountain Environmental Education Area	Pinedale Field Office
Cody Field Office	Rawlins Field Office
Kemmerer Field Office	Rock Springs Field Office
Lander Field Office	Worland Field Office

Public Land Treasures in Wyoming (including NE) Under BLM Stewardship

Cultural Resources	228,000 acres inventoried (4,182 properties reported)
Wilderness Study Areas (WSAs)	42 WSAs (575,841 acres)
Areas of Critical Environmental Concern (ACECs)	38 ACECs (700,874 acres)
National Historic Trails	5 trails (1,400 miles)
National Scenic Trails	1 trail (180 miles)
National Recreation Trails	1 trail (2 miles)

Report to the Public 2007

Economic Impacts 2007 Payment In Lieu of Taxes (PILT)

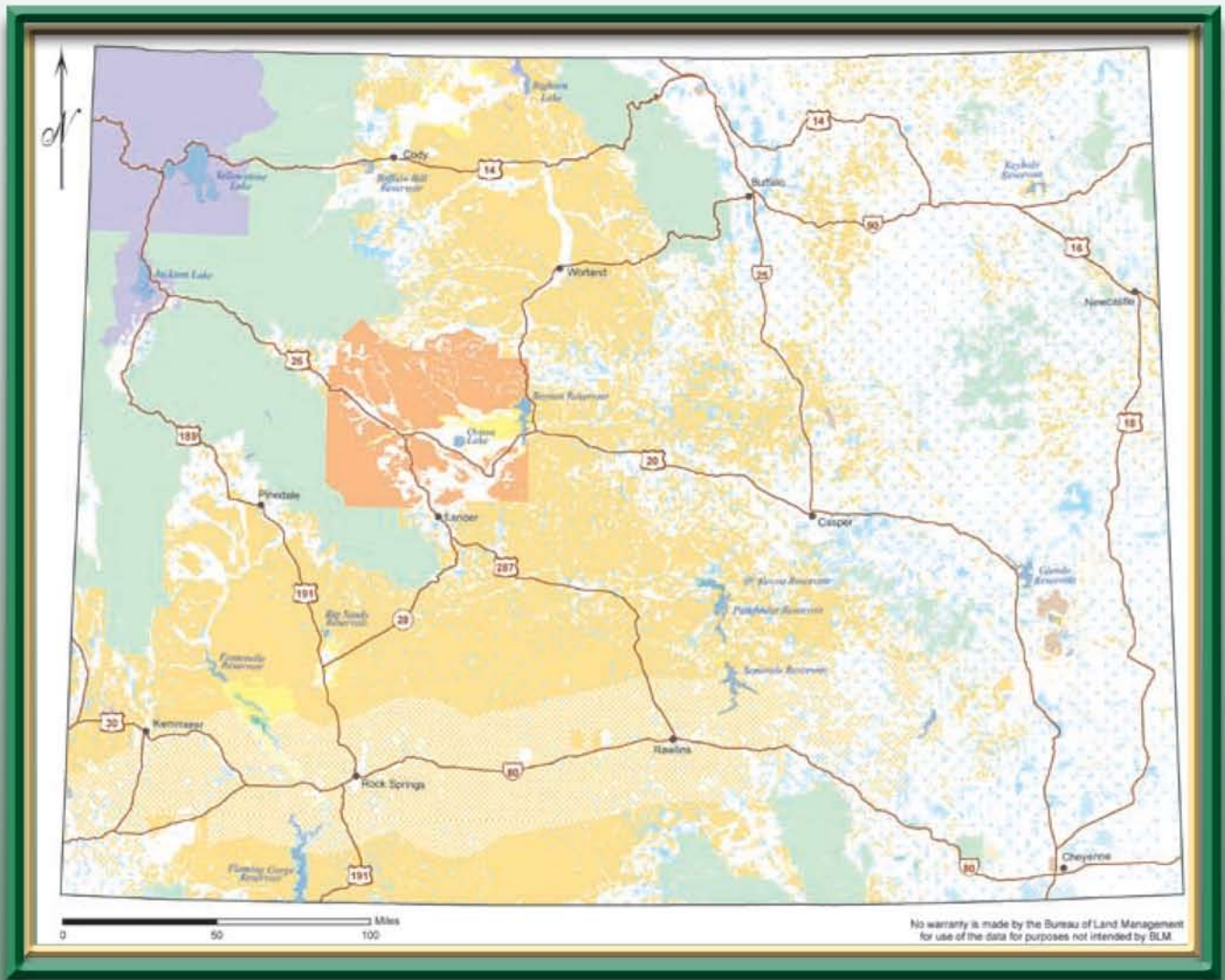
County	BLM Acres	All Agency Acres*	Total PILT
			Paid by all Agencies*
Albany	300,496	678,812	\$ 867,284
Big Horn	1,103,638	1,541,727	\$ 666,305
Campbell	227,339	367,114	\$ 390,213
Carbon	2,028,314	2,728,408	\$ 684,030
Converse	145,545	405,250	\$ 389,426
Crook	149,455	333,960	\$ 183,669
Fremont	2,084,422	3,190,646	\$ 1,570,615
Goshen	25,583	27,327	\$ 39,431
Hot Springs	514,405	570,156	\$ 435,258
Johnson	502,489	829,272	\$ 577,943
Laramie	9,508	9,508	\$ 13,719
Lincoln	1,015,737	1,952,608	\$ 815,710
Natrona	1,447,641	1,483,344	\$ 1,934,660
Niobrara	124,245	125,085	\$ 179,674
Park	561,351	3,591,379	\$ 1,200,021
Platte	82,047	106,459	\$ 153,284
Sheridan	49,818	444,155	\$ 573,211
Sublette	1,256,482	2,431,285	\$ 487,682
Sweetwater	4,304,225	4,611,015	\$ 1,691,978
Teton	10,936	2,631,654	\$ 861,208
Uinta	530,682	568,447	\$ 809,762
Washakie	922,276	959,362	\$ 627,576
Weston	74,695	305,059	\$ 210,072
Total	17,471,329**	29,892,032	\$15,362,731

* BLM, Forest Service, Bureau of Reclamation, National Park Service, Fish & Wildlife

** PILT payments are paid on eligible land and may not reflect total land managed.

BLM Wyoming Salary and Operation Funding by Communities

Community	Salaries	Operations
Buffalo	\$ 5,579,682	\$ 2,520,279
Casper	\$ 6,477,360	\$ 3,191,728
Cheyenne	\$ 14,817,344	\$ 17,728,211
Cody	\$ 1,695,293	\$ 641,134
Kemmerer	\$ 2,597,463	\$ 1,023,562
Lander	\$ 2,393,550	\$ 1,043,357
Newcastle	\$ 1,143,737	\$ 421,969
Pinedale	\$ 3,388,476	\$ 2,202,994
Rawlins	\$ 8,811,452	\$ 4,632,691
Rock Springs	\$ 5,558,730	\$ 3,580,011
Worland	\$ 5,741,243	\$ 2,677,905
Totals	\$ 58,204,330	\$ 39,663,841



- Bureau of Land Management
- Bureau of Reclamation
- Bureau of Indian Affairs
- Forest Service
- Fish & Wildlife
- National Park Service
- Other Federal
- Private
- State

Wyoming Surface Map