

<b>AMENDMENT OF SOLICITATION/MODIFICATION OF CONTRACT</b>			1. CONTRACT ID CODE	PAGE OF PAGES 1   8
2. AMENDMENT/MODIFICATION NO. 03	3. EFFECTIVE DATE 07/23/2008	4. REQUISITION/PURCHASE REQ. NO.	5. PROJECT NO. (If applicable)	
6. ISSUED BY NASA/Kennedy Space Center	CODE	7. ADMINISTERED BY (If other than Item 6) NASA/Kennedy Space Center	CODE	
8. NAME AND ADDRESS OF CONTRACTOR (No., street, county, State and ZIP Code)			(X) 9A. AMENDMENT OF SOLICITATION NO. NNK08257702Q	9B. DATED (SEE ITEM 11)
			10A. MODIFICATION OF CONTRACT/ORDER NO.	10B. DATED (SEE ITEM 13)
CODE	FACILITY CODE			

**11. THIS ITEM ONLY APPLIES TO AMENDMENTS OF SOLICITATIONS**

The above numbered solicitation is amended as set forth in Item 14. The hour and date specified for receipt of Offers  is extended,  is not extended. Offer must acknowledge receipt of this amendment prior to the hour and date specified in the solicitation or as amended, by one of the following methods:

(a) By completing Items 8 and 15, and returning \_\_\_\_\_ copies of the amendment; (b) By acknowledging receipt of this amendment on each copy of the offer submitted; or (c) By separate letter or telegram which includes a reference to the solicitation and amendment numbers. FAILURE OF YOUR ACKNOWLEDGMENT TO BE RECEIVED AT THE PLACE DESIGNATED FOR THE RECEIPT OF OFFERS PRIOR TO THE HOUR AND DATE SPECIFIED MAY RESULT IN REJECTION OF YOUR OFFER. If by virtue of this amendment you desire to change an offer already submitted, such change may be made by telegram or letter, provided each telegram or letter makes reference to the solicitation and this amendment, and is received prior to the opening hour and date specified.

12. Accounting and Appropriation Data (If required)

**13. THIS ITEM APPLIES ONLY TO MODIFICATIONS OF CONTRACTS/ORDERS, IT MODIFIES THE CONTRACT/ORDER NO. AS DESCRIBED IN ITEM 14.**


- (X) A. THIS CHANGE ORDER IS ISSUED PURSUANT TO: (Specify authority) THE CHANGES SET FORTH IN ITEM 14 ARE MADE IN THE CONTRACT ORDER NO. IN ITEM 10A.
- B. THE ABOVE NUMBERED CONTRACT/ORDER IS MODIFIED TO REFLECT THE ADMINISTRATIVE CHANGES (such as changes in paying office, appropriation date, etc.) SET FORTH IN ITEM 14, PURSUANT TO THE AUTHORITY OF FAR 43.103(b).
- C. THIS SUPPLEMENTAL AGREEMENT IS ENTERED INTO PURSUANT TO AUTHORITY OF:
- D. OTHER (Specify type of modification and authority)

E. IMPORTANT: Contractor  is not,  is required to sign this document and return \_\_\_\_\_ copies to the issuing office.

14. DESCRIPTION OF AMENDMENT/MODIFICATION (Organized by UCF section headings, including solicitation/contract subject matter where feasible.)

The purpose of this amendment is to respond to questions received from prospective bidders (See pages 2-6) and two drawings (pages 7-8). The response date to submit quotes of July 30, 2008 remains unchanged.

Except as provided herein, all terms and conditions of the document referenced in Item 9A or 10A, as heretofore changed, remains unchanged and in full force and effect.

15A. NAME AND TITLE OF SIGNER (Type or print)		16A. NAME AND TITLE OF SIGNER (Type or print) Chris Pino	
15B. CONTRACTOR/OFFEROR  (Signature of person authorized to sign)	15C. DATE SIGNED	16B. UNITED STATES OF AMERICA BY  (Signature of Contracting Officer)	16C. DATE SIGNED

Solicitation Number: NNK08257702Q

Project Title: Refurbish and Install Mercury Redstone Rocket at New KSC Pass & ID Bldg.

Q1. What is the weight of the rocket as it sits?

A1. Approximately 7200 lbs.

Q2. Can a person climb into the interior of the rocket?

A2. No.

Q3. Are the 3 guide wires going to be attached to the rocket at the new pass & ID, if so is new wire rope required?

A3. New rope is required see answer to previous question and attached drawings.

Q4. Can the rocket be disassembled?

A4. Yes, the major components are launch escape tower, replica mercury capsule, booster and mounting base.

Q5. Does the whole rocket need to be water blasted?

A5. No.

Q6. Does the rocket have any lifting lugs located on it?

A6. Required field assessment. We are unsure of the structural integrity.

Q7. Is rocket a mock up or an original from the 1960's?

A7. Yes, it is a tactical replica Mercury Redstone.

Q8. Can the rocket's paint be stripped using another method?

A8. As long as all effluents are contained per environmental guidelines and regulations.

Q9. How many copies of the request for quotation are required?

A9. One, preferably email to [chris.pino-1@nasa.gov](mailto:chris.pino-1@nasa.gov)

Q10. Can an extension to 25 July, 2008 be granted?

A10. The current date to respond is July 30, 2008.

Q11. Is this RFP for the same Redstone rocket that was out to bid in 2006? That solicitation was #NNK06119688R. If so, is it still a requirement to perform a site visit prior to the submission of the bid if the vehicle was inspected in 2006?

A11. No, this is a different rocket.

Q12. Is there an accurate set of historic decals/detail painting schemes available? Is there any other historic documentation available from when the rocket was brought to KSC?

A12. No. Only what is on the rocket presently.

Q13. Has a structural assessment of the rocket and mounting fixture ring been performed? If so, are the results available to the bidders?

A13. No. No assessment has been made. That's why is in the SOW for the contractor to suggest any other critical repairs.

Q14. Are there any known hazardous materials on the Redstone Rocket or the mounting fixture ring?

A14. There are none known.

Q15. Can the Redstone be shipped to an off-site facility or does it have to be worked on at the site? If it can be shipped, Can it be wrapped and secured to a flat bed rather than shipped inside of a trailer or container?

A15. Contemplated repairs are minimal and water blasting, rust treatment, primer and paint are the only work expected per the SOW. Performance of the work off-site is acceptable as long as completion and delivery are within the required schedule.

Q16. Are there any restrictions on the location of the off-site work facility?

A16. No.

Q17. Is there any flexibility to the 40 day completion requirement? Does this take into account for inclement weather?

A17. An additional 10 days of "down days" will be added to the SOW.

Q18. What are the security restrictions on-site and badging requirements for US and non US citizens?

A18. This is still federal property though outside the gate. Plain badges should be on the person though not necessarily wearing them. No PRP required since work is for less than 180 days. Workers don't need US citizenship though legality for working such as residency is required.

Q19. Are there any orientations/training required for personnel coming on-site to work? If yes, how much time do they require?

A19. None required.

Q20. Is there an anticipated start date for the contract?

A20. As soon as awarded and given Notice To Proceed based on all required plans having been submitted. Prior you may be given a Restricted Notice To Proceed to work the documentation.

Q21. Is it expected that the interior of the fuel/oxidizer tanks will need to be inspected as part of the work scope even though they are not accessible?

A21. Only if it affects the structural integrity of the rocket as an outdoor exhibit.

Q22. Please confirm if this will be a Davis-Bacon wage project. If work can be performed at an off-site facility in another state will Davis Bacon wages still be in effect?

A22. Davis-Bacon wages are not required. This procurement is under the Service Contract Act.

Q23. There is no prevailing wage classification for conservators or conservation service. These are considered Professional Services and are not typically subject to prevailing wage requirements. Please confirm that this is the case for this project or if we will be required to submit a classification request.

A23. This is not a conservation project. This is a project to do minor refurbishment and ensure the rocket will not collapse due to rust when moved, erected and displayed at the future site.

Q24. Are there liquidated damages associated with this contract?

A24. No.

Q25. Is there electrical power and water available at the site or will the contractor need to provide?

A25. Electric and Water are both available to the contractor.

Q26. What are the insurance requirements for the project? What is the estimated value of the rocket before and after restoration?

A26. A \$1 million liability policy is required. A current estimated value is not available.

Q27. Is there a bonding requirement?

A27. No.

Q28. Will this be considered a critical lift under NASA standards? If so, please provide the requirement that will be needed for the lift plan.

A28. This is not a critical lift.

Q29. If a crane will need to be placed on the grass adjacent to the mounting fixture, who is responsible for identifying potential buried utilities?

A29. KSC base operations contractor will provide locator services.

Q30. Please explain the extent of the roles of NASA engineers in evaluating the following items: 1) the suitability of reusing the existing mounting fixture; 2) the suitability of reusing the existing cable tie downs currently anchored in the ground; 3) the type and size of the new guy cables?

A30. Any suggested course of action by the contractor will be evaluated by the NASA engineer (COTR). Cable tie downs points and concrete platform are provided at the new location. New guy cables type/size will be per drawing or provided at contractor's request by NASA.

Q31. If needed after the initial inspection, what type of deliverable is NASA going to expect for the potential redesign of an internal structural support system for the rocket and the new guy wire anchoring system on the rocket itself, i.e., stamped drawings showing all calculations from a certified PE, etc? If a PE is required, do they have to be licensed and certified in the state of FL?

A31. NASA only asks for a condition report. NASA will provide a design if required due to unhealthy condition of rocket.

Q32. If we intend to submit an alternate bid, does it need to be submitted as a stand alone bid delivered under a separate cover or can it be included as an alternate to the base bid?

A32. Either way as long as it is understandable.

Q33. Is NASA/KSC subject to the Prompt Payment Act? If not, what is the anticipated turn around time for payment requests?

A33. Yes, we are subject to the Prompt Payment Act. The required turn-around is 30 days.

Q34. Is there an estimated bid range for the project?

A34. No.

Q35. On the day of installation at the new PIDS, We understand that crane operations will not be allowed until after 4:00PM. Will other kinds of site work (such as deliveries of equipment and trucks carrying the rocket) be allowed before 4:00 PM?

A35. No vehicles or equipment that will obstruct the flow of traffic at the badging station will be allowed. There are 8 (ea) 18-wheeler parking spots in the back parking. Contractor may use these to stage the equipment temporarily as long as traffic flow can continue.

Q36. The SOW indicates in-place work on the rocket and base at the State Road 3 site. Will NASA entertain allowing the units to be trucked offsite for the stripping/refurbishment /repaint processes?

A36. Contemplated repairs are minimal and water blasting, rust treatment, primer and paint is all we expect from the contractor per the SOW. If the contractor wants to work off-site and can deliver within the required schedule that is his option. Cost evaluation is based on an on-site repair.

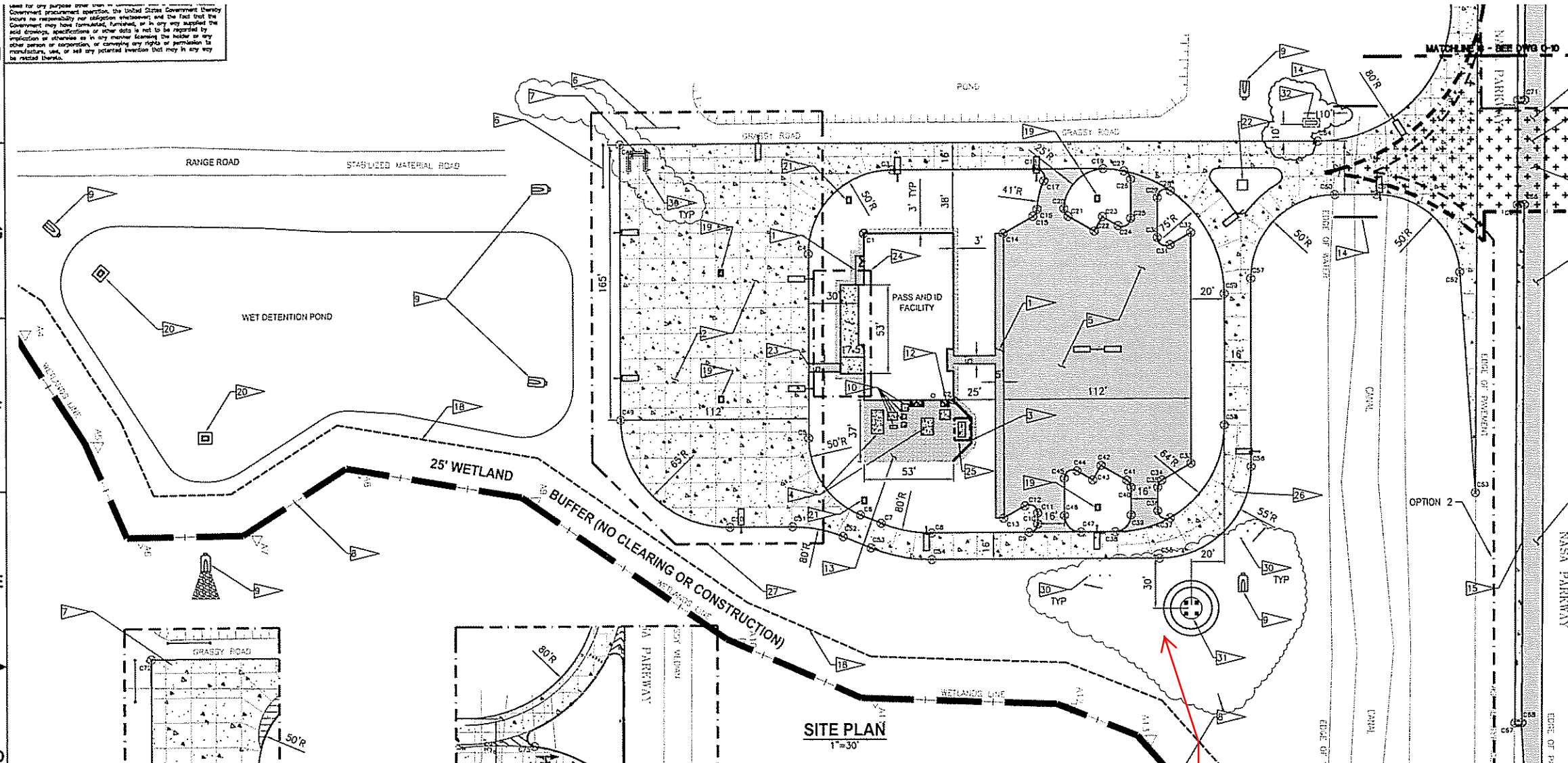
Q37. The SOW indicates 40 days for the repairs and reinstallation. Can this be extended if required?

A37. The contractor will be given an additional 10 down days to the schedule of 40 days.

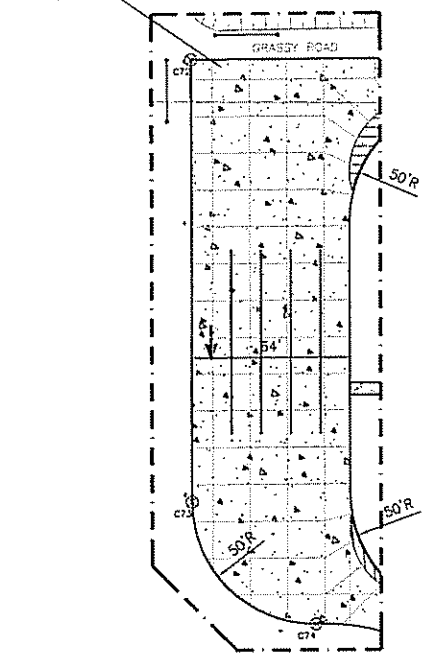
Q38. There appear to be no tiedown cable attachments at the new 405 site. Will anchors or other ground attachment points be provided by NASA or will this be part of the work scope?

A38. The contractor shall provide the guy wire (6X19-7/16" dia stainless steel wire rope) and galvanized soil screw (30 ft. long with 1 3/4" square shaft & 4 helix plates. Also a galvanized turn buckle with jaw and jaw end and 1 1/4 in. dia threaded rod shall be used. See attached drawing for detail installation dimensions.

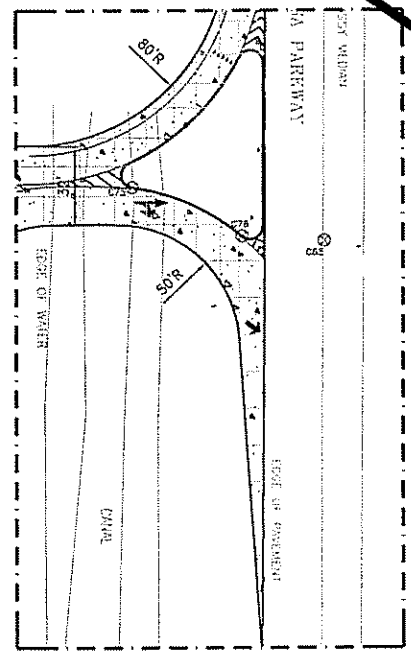
used for any purpose other than that intended by the Government. The Government assumes no responsibility for the accuracy or completeness of the information provided, and the fact that the Government may have furnished, furnished, or in any way supplied the information does not constitute a warranty, express or implied, or any other form of assurance, or any other form of permission to manufacture, use, or sell any product that may in any way be related thereto.



- ### FLAG NOTES
- 1 5' CONCRETE SIDEWALK, TYP (3) C19
  - 2 CONCRETE PAVEMENT AND PAVEMENT JOINTS (7) C16
  - 3 PRIVACY WALL. REFER TO STRUCTURAL PLANS.
  - 4 CONCRETE PAD, TYP (4) C19
  - 5 LIGHT DUTY ASPHALT PAVEMENT (3) C16
  - 6 CABLE BARRICADE, TYP (2) C17
  - 7 DUMPSTER AREA. SEE DETAIL PLAN (3) S2.1
  - 8 JURISDICTIONAL WETLANDS BOUNDARY
  - 9 MITERED END SECTIONS (FDOT INDEX 272)
  - 10 HVAC CONDENSING UNITS. REFER TO MECHANICAL PLANS.
  - 11 TRANSFORMER. REFER TO ELECTRICAL PLANS.
  - 12 4" DEEP RIVER RUN GRAVEL
  - 13 CONCRETE HEADWALL (FDOT INDEX 250)
  - OPTION 2 14 TYPE I 4' TRAFFIC SEPARATOR (FDOT INDEX 302)
  - OPTION 2 15 NEW 12' WIDE DECELERATION LANE. CROSS SLOPE VARIES 0.5% - 4%.
  - 16 HEAVY DUTY ASPHALT (6) C16
  - 17 25' WETLAND BUFFER.
  - 18 TYPE E INLET (FDOT INDEX 232)
  - 19 TYPE D INLET (FDOT INDEX 232)
  - 20 TYPE C INLET (FDOT INDEX 232)
  - 21 TYPE J INLET (FDOT INDEX 232)
  - 22 5' CONCRETE SIDEWALK, EXTEND TO BUILDING FOR BASE BID.
  - OPTION 7 23 REFER TO STRUCTURAL PLANS.
  - OPTION 1 24 CONCRETE PAD FOR 2" REDUCED PRESSURE BACKFLOW PREVENTER. REFER TO LANDSCAPE & IRRIGATION PLANS.
  - OPTION 4 25 CONCRETE-ASPHALT PAVEMENT JOINT, TYP (8) C16
  - OPTION 6 26 CONCRETE PAVEMENT FOR TRUCK PARKING.
  - OPTION 6 27 NEW 12' WIDE ACCELERATION LANE. CROSS SLOPE VARIES 0.5% - 4%.
  - 28 AREA TO BE CONSTRUCTED IF OPTION 2 AND/OR OPTION 6 ARE EXERCISED.
  - 29 BOLLARD TYP (8) C18
  - 30 MONUMENT FOUNDATION SEE DETAIL (2) S2.1
  - 31 SIGN SEE DETAIL (1) S2.1



BASE BID - FOUR TRACTOR-TRAILER PARKING  
1"=30'



BASE BID - NO LEFT TURN LANE  
1"=30'

#### COORDINATE TABLE (CONT)

COORDINATE	NORTHING	EASTING	DESCRIPTION
C31	1523755.68	604263.36	END RADIUS
C32	1523768.18	604256.15	CORNER PARKING LOT
C33	1523768.18	604394.71	CORNER PARKING LOT
C34	1523750.68	604404.81	START RADIUS
C35	1523748.18	604409.14	END RADIUS
C36	1523748.18	604423.15	START RADIUS
C37	1523755.64	604427.51	END/START RADIUS
C38	1523722.75	604435.75	END/START RADIUS
C39	1523732.18	604425.77	END RADIUS
C40	1523732.18	604409.14	START RADIUS
C41	1523729.68	604404.81	END RADIUS
C42	1523714.17	604395.86	CORNER PARKING LOT
C43	1523709.17	604404.52	CORNER PARKING LOT
C44	1523699.68	604399.04	START RADIUS
C45	1523692.18	604403.37	END RADIUS
C46	1523692.18	604425.77	START RADIUS
C47	1523702.18	604435.77	END RADIUS
C48	1523427.51	604201.77	CORNER PARKING LOT
C49	1523427.51	604366.77	START RADIUS
C50	1523492.51	604431.77	END RADIUS
C51	1523529.74	604431.77	START RADIUS
C52	1523560.10	604437.75	END RADIUS
C53	1523576.77	604444.59	START RADIUS
C54	1523613.19	604451.77	END RADIUS
C55	1523749.18	604451.77	START RADIUS
C56	1523804.18	604396.77	END RADIUS
C57	1523804.18	604283.77	START RADIUS
C58	1523788.18	604371.77	END RADIUS
C59	1523788.18	604292.77	START RADIUS
C60	1523854.18	604233.77	END RADIUS
C61	1523879.17	604233.77	START RADIUS
C62	1523929.05	604280.29	END RADIUS
C63	1523938.06	604413.06	END OF TAPER
C64	1523844.18	604201.77	END RADIUS
C65	1523963.57	604240.34	START RADIUS
C66	1523967.57	604240.36	END RADIUS
C67	1523961.86	604551.30	START RADIUS
C68	1523965.86	604551.33	END RADIUS
C69	1523976.79	604745.40	END OF TAPER
C70	1523963.86	604177.79	START RADIUS
C71	1523967.86	604177.79	END RADIUS

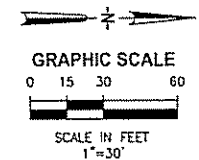
#### COORDINATE TABLE

COORDINATE	NORTHING	EASTING	DESCRIPTION
C1	1523572.85	604255.77	CORNER OF BLDG
C2	1523626.18	604355.77	CORNER OF BLDG
C3	1523589.51	604217.77	START RADIUS
C4	1523539.51	604267.77	END RADIUS
C5	1523539.51	604378.48	START RADIUS
C6	1523570.54	604424.74	END RADIUS
C7	1523582.84	604429.79	START RADIUS
C8	1523613.19	604435.77	END RADIUS
C9	1523671.18	604435.77	START RADIUS
C10	1523676.18	604430.77	END RADIUS
C11	1523676.18	604424.17	START RADIUS
C12	1523668.68	604419.83	END RADIUS
C13	1523656.05	604427.17	CORNER PARKING LOT
C14	1523656.00	604256.15	CORNER PARKING LOT
C15	1523673.69	604246.04	START RADIUS

#### COORDINATE TABLE (CONT)

COORDINATE	NORTHING	EASTING	DESCRIPTION
C16	1523676.19	604241.82	END/START RADIUS
C17	1523680.26	604227.94	END/START RADIUS
C18	1523675.77	604217.77	END RADIUS
C19	1523715.72	604217.81	START RADIUS
C20	1523692.10	604241.35	END/START RADIUS
C21	1523694.71	604246.06	END RADIUS
C22	1523710.27	604255.04	CORNER PARKING LOT
C23	1523715.27	604246.38	CORNER PARKING LOT
C24	1523724.68	604251.82	START RADIUS
C25	1523732.18	604247.49	END RADIUS
C26	1523732.18	604224.22	START RADIUS
C27	1523728.19	604219.29	END/START RADIUS
C28	1523756.04	604231.22	END/START RADIUS
C29	1523748.18	604235.32	END RADIUS
C30	1523748.18	604259.03	START RADIUS

\*ALL INTERNAL RADII ARE 5' UNLESS OTHERWISE NOTED



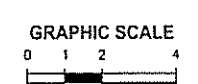
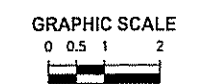
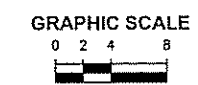
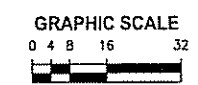
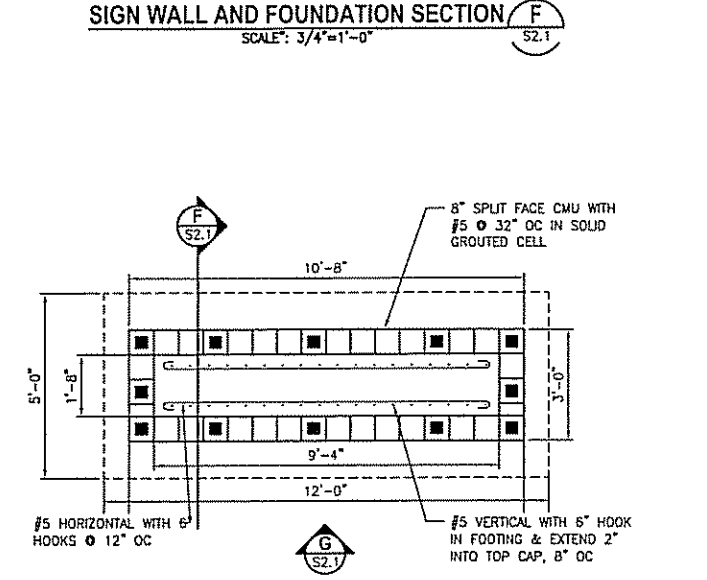
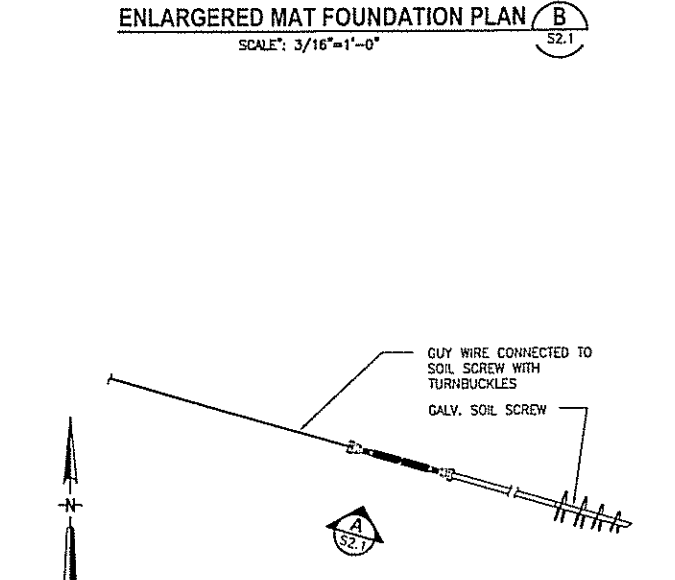
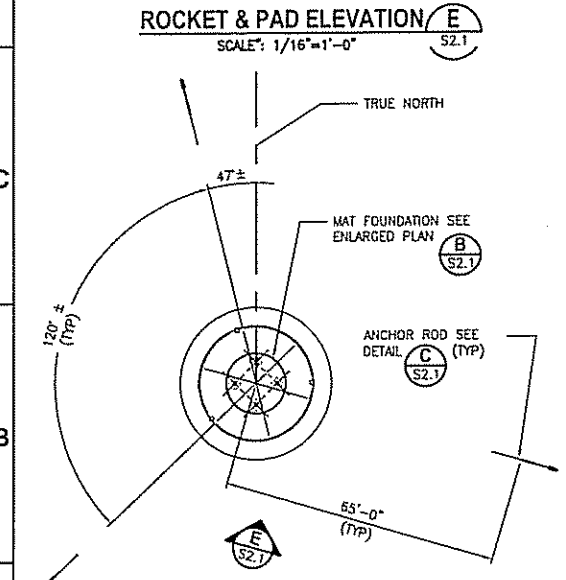
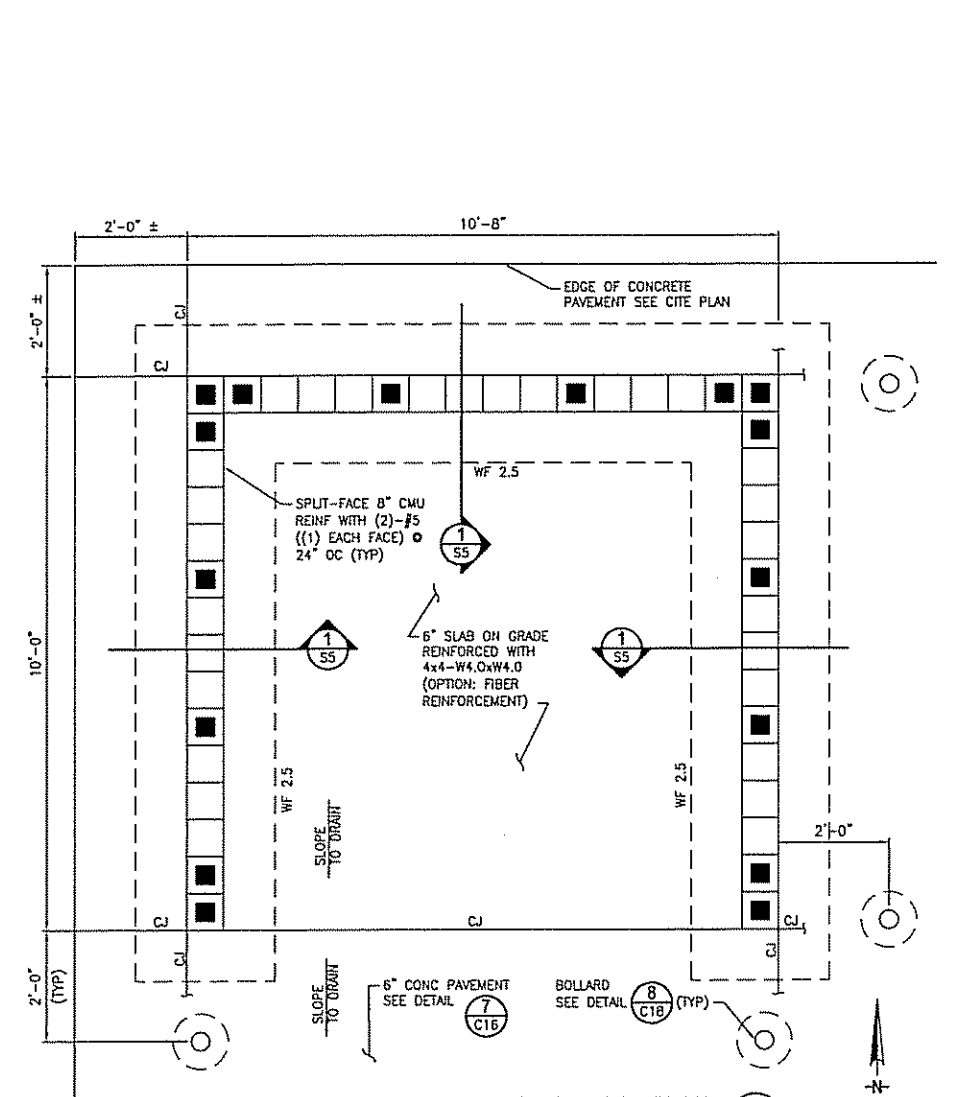
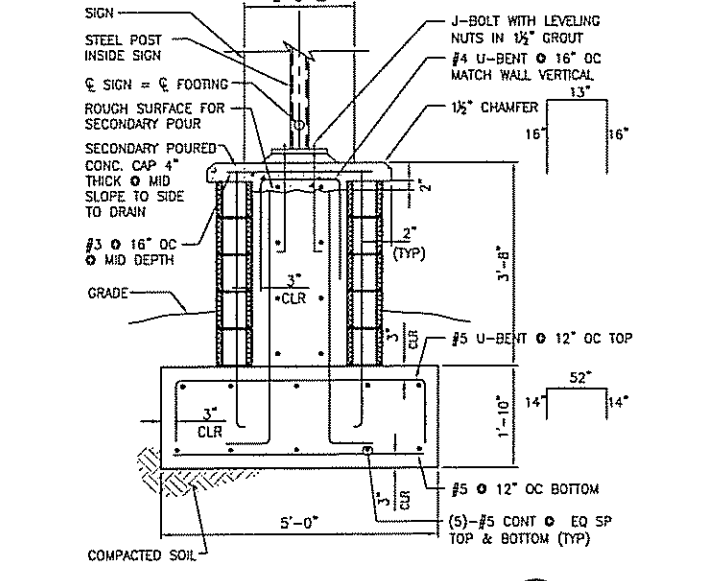
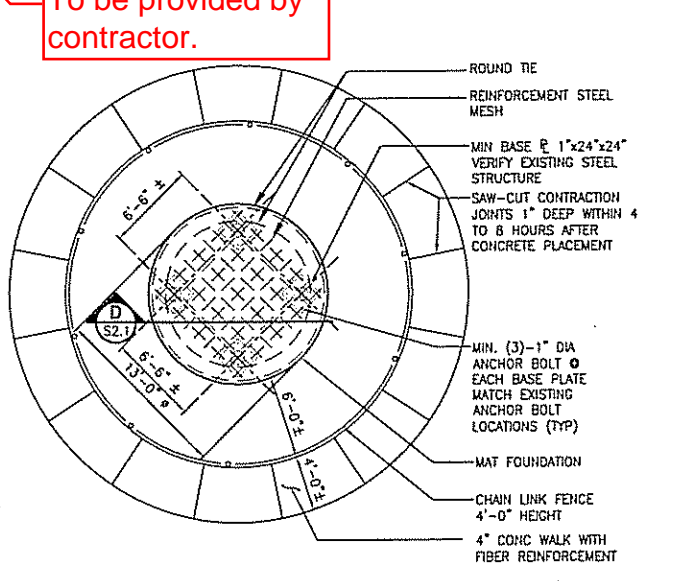
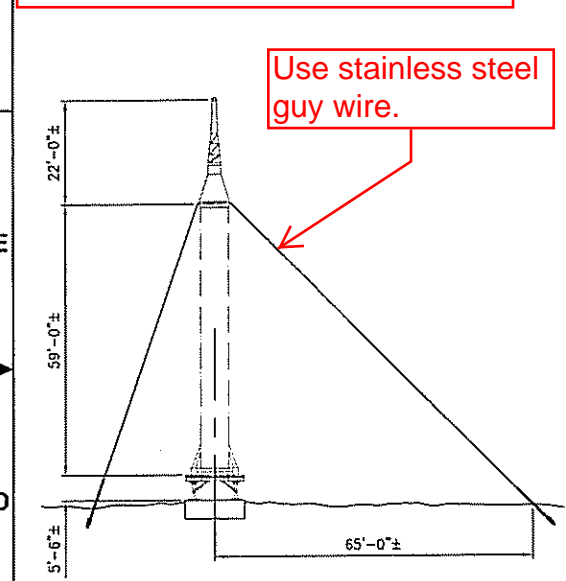
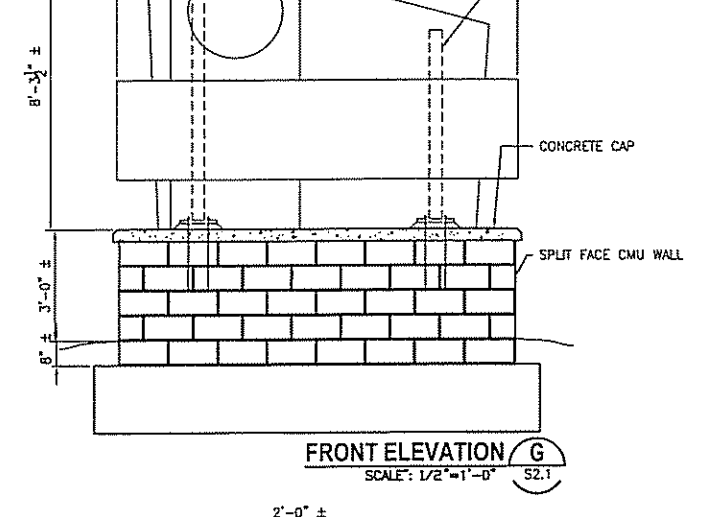
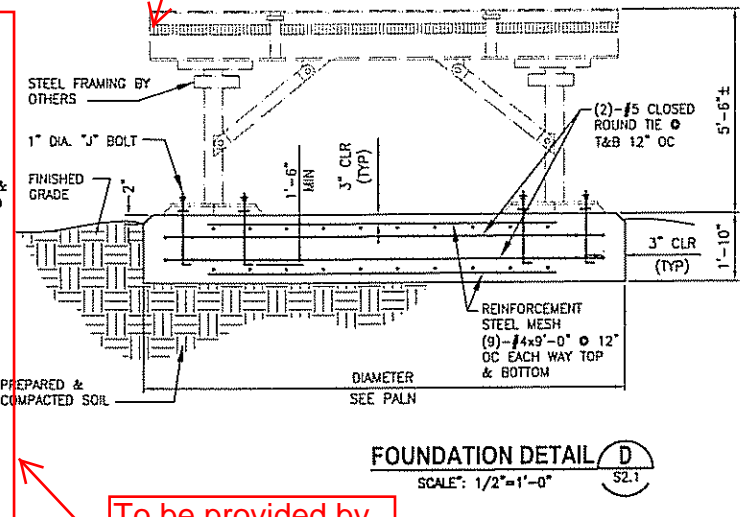
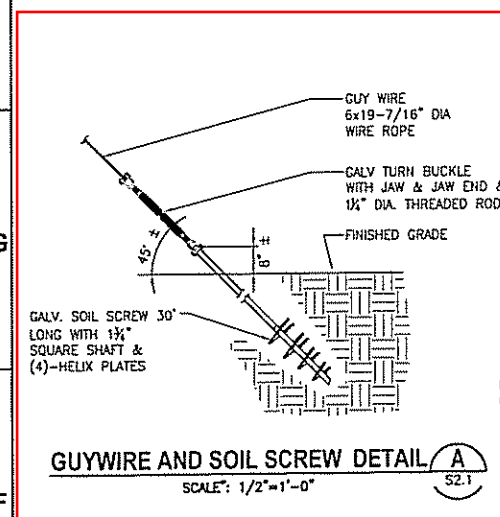
THIS DRAWING CREATED ON AUTOCAD 2007 AND WILL BE REVISED ONLY ON AN AUTOCAD SYSTEM. FILE: 14000128-C08.DWG

**JONES EDMUNDS**  
210 N WALDO ROAD, GAINESVILLE, FLORIDA 32608-1104 / (352) 377-5821  
3510 S WASHINGTON AVE, SUITE 210, THUSVILLE, FLORIDA 32780 / (321) 269-2700

SYM	ZONE	DESCRIPTION	DATE	APPROVED
SIGNATURES				
DRAWN	KCP	DATE	08/24/07	NATIONAL AERONAUTICS AND SPACE ADMINISTRATION
CHECKED	JAD	DATE	08/24/07	JOHN F. KENNEDY SPACE CENTER, NASA
ENGINEER	SMS	DATE	08/24/07	KENNEDY SPACE CENTER, FLORIDA
<b>DESIGN REPLACEMENT</b>				
<b>PASS &amp; ID FACILITY</b>				
<b>SITE PLAN</b>				
S. SZABO	DATE	01/05/07	SIZE	DWG. NO.
APPROVED	DATE	01/05/07	F	79K36628
J. SNEARLY	DATE	01/05/07	PRGJ. NO.	98469
TITLE				SHEET 10

used for any purpose other than in connection with a definitely stated Government procurement operation, the United States Government thereby incurs no responsibility for adoption whatsoever; and the fact that the Government may have formulated, furnished, or in any way supplied the said drawings, specifications or other data is not to be interpreted by implication or otherwise as in any manner favoring the holder or any other person or corporation, or conveying any rights or permission to manufacture, use, or sell any potential invention that may in any way be related thereto.

This base is not the one to be used. J bolt locations, though, remain per the drawing. Contractor to verify. Create leg bolt patterns on new leg plates for base being used.



NOTE: MAT FOUNDATION IS DESIGNED FOR SERVICE LOAD WITH GUYWIRE AND ANCHORS INSTALLED. ROCKET MODEL SHALL BE STABILIZED BY SHORING BEFORE GUYWIRE AND ANCHOR INSTALLATION.

THIS DRAWING CREATED ON AUTOCAD 2007 AND WILL BE REVISED ONLY ON AN AUTOCAD SYSTEM. FILE: S2.1 MISC. PLAN DETAILS.DWG

**JONES EDMUNDS**  
730 NE WALDO ROAD, CAITHESVILLE, FLORIDA 32641 / (352) 377-1823  
3910 S WASHINGTON AVE, SUITE 210, TITUSVILLE, FLORIDA 32780 / (321) 269-2910

SYM	ZONE	DESCRIPTION	DATE	APPROVED
REVISIONS				
SIGNATURES	DATE	NATIONAL AERONAUTICS AND SPACE ADMINISTRATION		
DRAWN	08/24/07	JOHN F. KENNEDY SPACE CENTER, NASA		
CHECKED	08/24/07	KENNEDY SPACE CENTER, FLORIDA		
APPROVED	08/24/07	DESIGN REPLACEMENT		
		PASS & ID FACILITY		
		MISC. PLAN DETAILS		
SUBMITTED	DATE	SIZE	DWG. NO.	REV
APPROVED		F	79K36628	
TITLE		PROJ. NO.	98469	SHEET