

PART No.	M F	REVISIONS			DATE	APPROVAL
		ZONE	SYM	DESCRIPTION		

- NOTES: (UNLESS OTHERWISE SPECIFIED)**
- DIMENSIONING AND TOLERANCING PER ASME Y14.5M-1994.  
- UNLESS SEPARATE TOLERANCES ARE SHOWN, PERFECT ORIENTATION AT MMC FOR RELATED FEATURES IS REQUIRED.  
- GENERAL ANGULAR TOLERANCE DOES NOT APPLY TO IMPLIED 90 DEGREE ANGLES.
  - INSTALL PER MSS1835.
  - INSTALL PER MIL-I-45932/2.
  - TORQUE TO 10-12 IN-LBS ABOVE RUNNING TORQUE.
  - REPLACE THE SST FERRULES OF F/N 11 WITH F/N 12. INSTALL FITTING PER MANUFACTURER'S INSTRUCTIONS.
  - APPLY SERVICE REMOVABLE LOCTITE (SMALL SCREW THREAD LOCKER NO. 222) TO THREADS PER MANUFACTURER'S INSTRUCTIONS.
  - INSERT F/N 6 INTO C'BORE UNTIL IT BOTTOMS. FILL CAVITY AROUND F/N 6 WITH F/N 7 AND F/N 8. PREPARE AND CURE F/N 7 AND F/N 8 PER MANUFACTURER'S INSTRUCTIONS.
  - CLEAN AND MAINTAIN PER JSC-SN-C-0005, VISUALLY CLEAN (VC).

- VENDOR LIST:**
- SCANIVALVE CORP.  
1722 N. MADSON ST.  
LIBERTY LAKE, WA 99019  
PH. 1-800-935-5151  
CAGE CODE: 22422
  - LORD CORP.  
CHEMICAL PRODUCTS DIV.  
2000 W. GRANDVIEW BLVD.  
P.O. BOX 10038  
ERIE, PA 16514-0038  
PH. 1-814-868-3611  
CAGE CODE: 30676
  - KISTLER INSTRUMENT CORP.  
75 JOHN GLENN DR.  
AMHERST, NY 14228-2171  
PH. 1-716-691-5100  
CAGE CODE: 58679
  - AL FLUID SYSTEM TECHNOLOGIES, INC.  
237 CAHABA VALLEY PKWY.  
PELHAM, AL 35124-1146  
PH. 1-205-988-4812  
CAGE CODE: 8H994

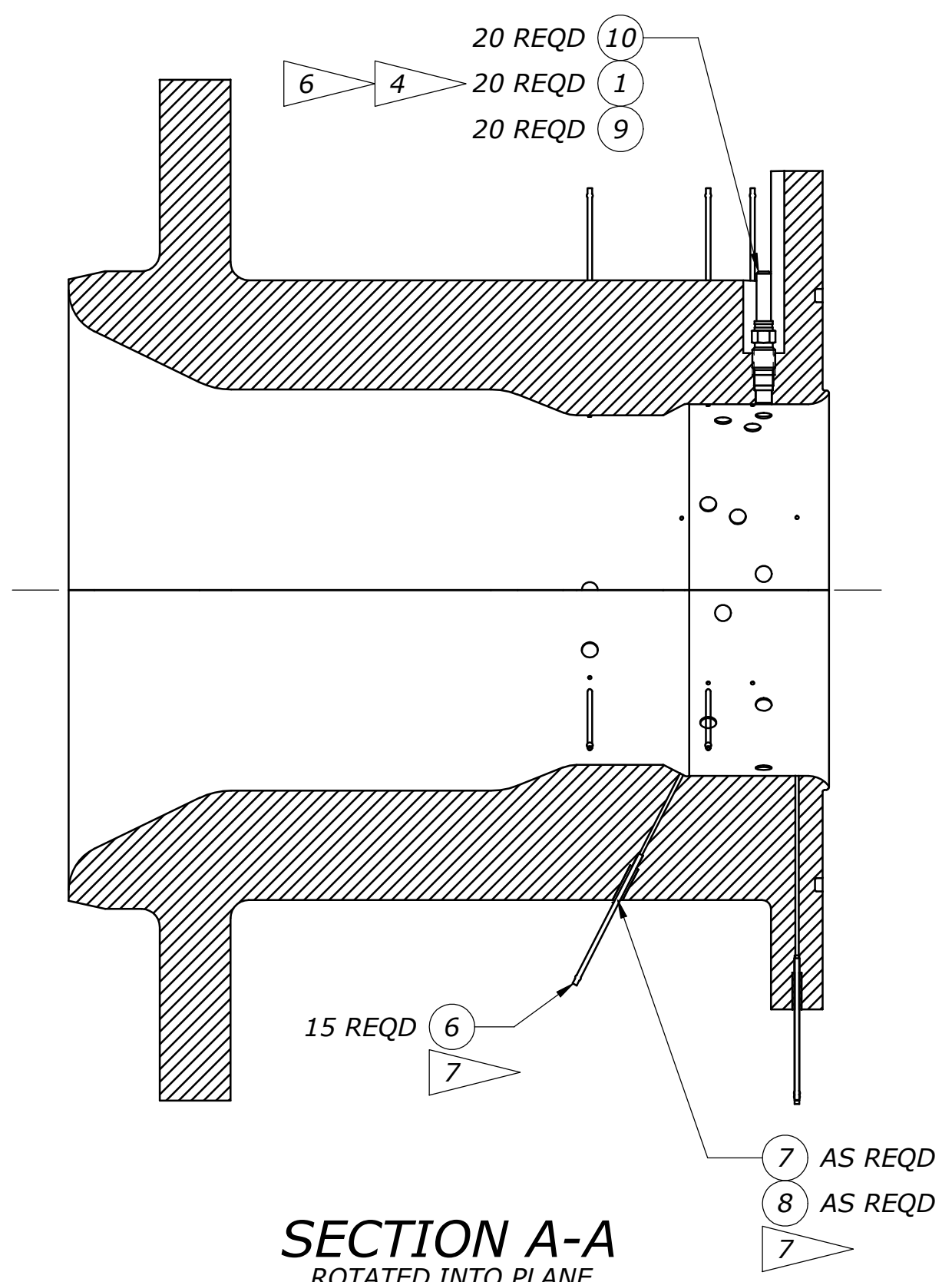
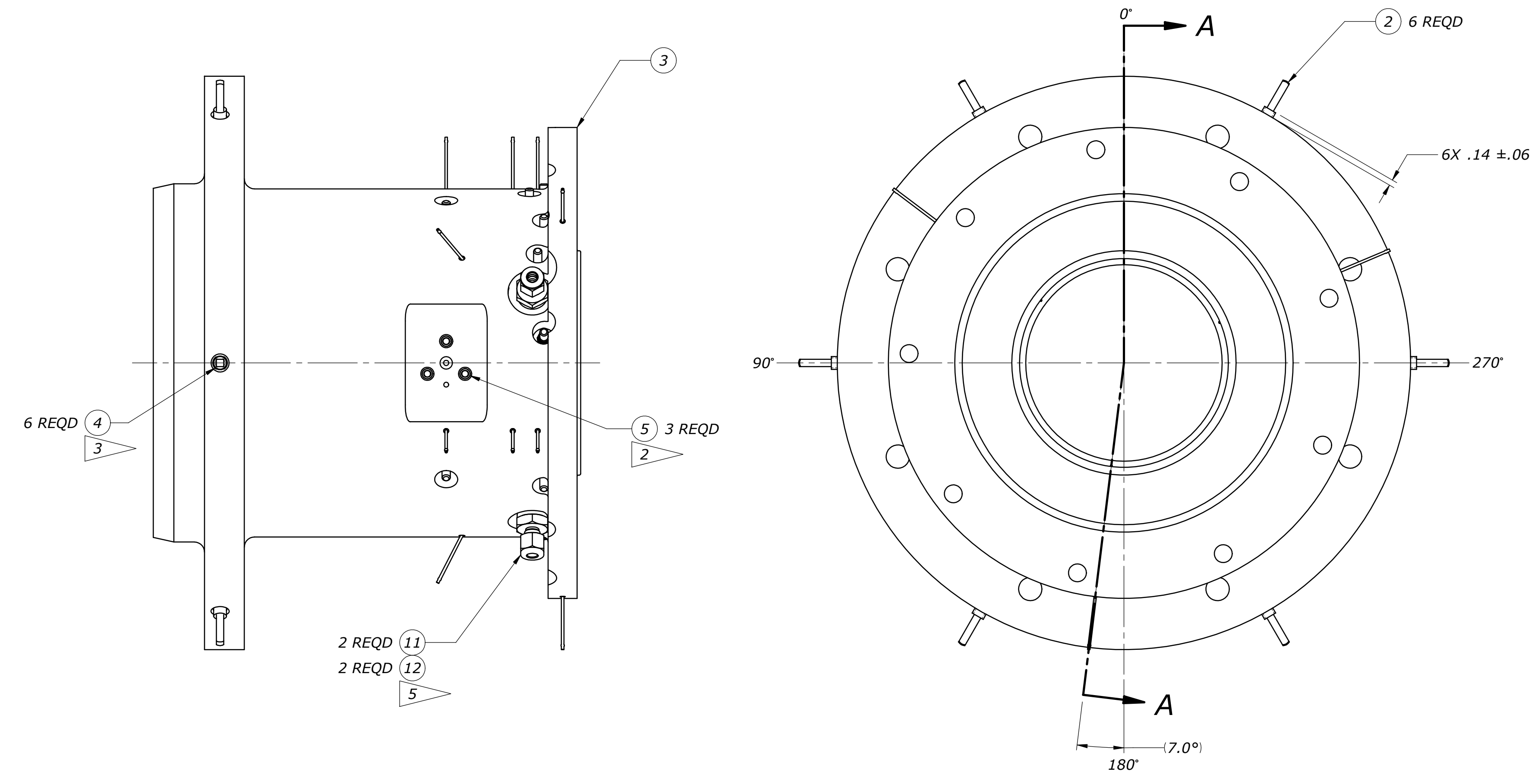
MED03437

FIND NO.	NO. REQ'D	PART NO.	DESCRIPTION	VEND. NO.	REMARKS
12	2	NY-400-SET	.25 FERRULE SET	4	NYLON
11	2	SS-400-1-0RBT	1/4" O-SEAL STRAIGHT THREAD CONNECTOR	4	316 SST / BUNA
10	20	200B15	TEFLON SEAL	3	WHITE TEFLON
9	20	200B11	FLOATING NUT	3	300 SERIES CRES
8	AR	NO. 17	ACCELERATOR	2	
7	AR	VERSILOK 201	STRUCTURAL ADHESIVE	2	
6	15	TUBN-063-2.0	.063 TUBULATION	1	SST
5	3	MS51830CA201L	INSERT, LOCKING, .1900-32 UNJF-3B		A286 CRES
4	6	M45932/2-121	INSERT, LOCKING, .3125-24		303 CRES
3	1	MED03436-1	SHROUD		6061-T6 AL ALLOY
2	6	MED00527-1	POSITIONING SCREW		NITRONIC 60
1	20	MED00519-1	DUMMY TRANSDUCER		316 CRES

MED03437-1 SHOWN

TOLERANCE EXCEPT AS NOTED DIMENSIONS ARE IN INCHES		ORIGINAL DATE OF DRAWING 2008-12-10	<b>SHROUD ASSEMBLY</b> GEORGE C. MARSHALL SPACE FLIGHT CENTER NATIONAL AERONAUTICS AND SPACE ADMINISTRATION MARSHALL SPACE FLIGHT CENTER AL 35812	
DECIMALS .XXX ±.010	ANGLES ± 2.0°	DRAFTSMAN DD GOODMAN		
SEE ENGINEERING RECORDS	MATERIAL NOTED	CHECKER J FORBES	DA	
MED02301-1	J-2X WF	HEAT TREAT NONE	SUBMITTED S SKELLEY	
NEXT ASSY	USED ON	FINAL FINISH NONE	APPROVED D WHITTEN	
APPLICATION		EST WEIGHT 46 LBS	SCALE 1/2	CODE 339B2

DWG SIZE  
**D**  
MED03437  
SHEET 1 OF 1



**SECTION A-A**  
ROTATED INTO PLANE

8

7

6

5

4

3

2

A

B

C

D

8

7

6

5

4

3

2

D

C

B

A