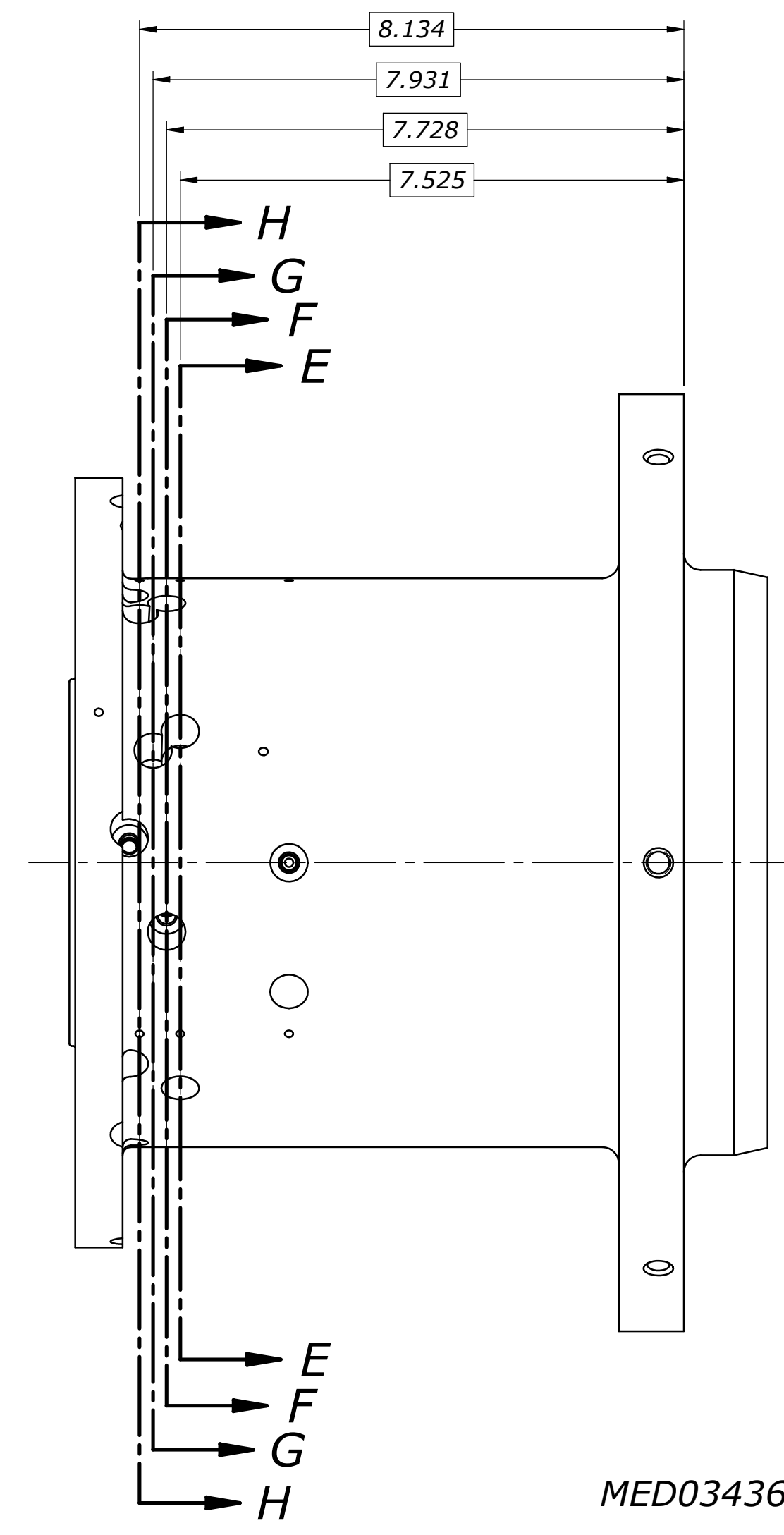
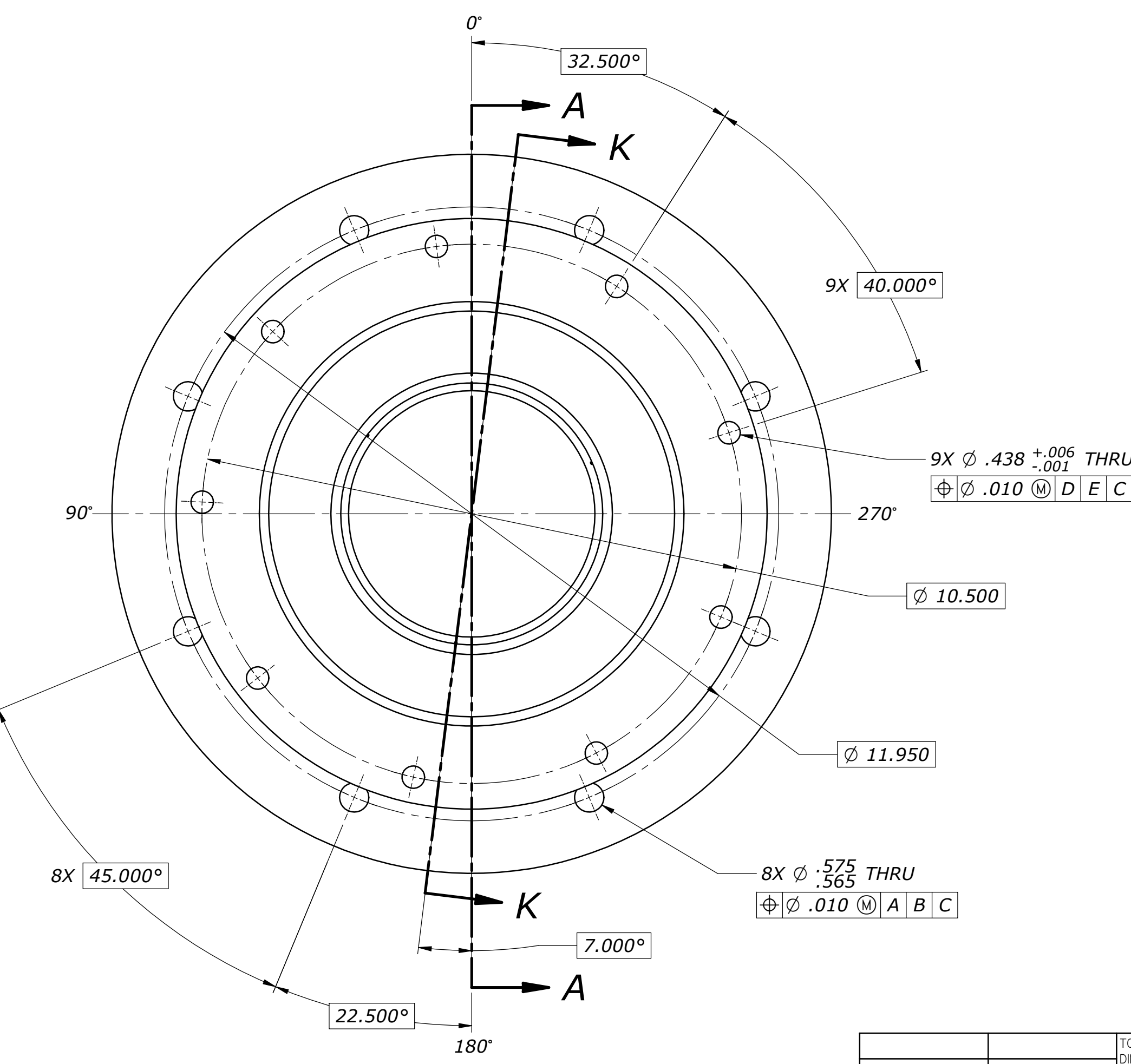
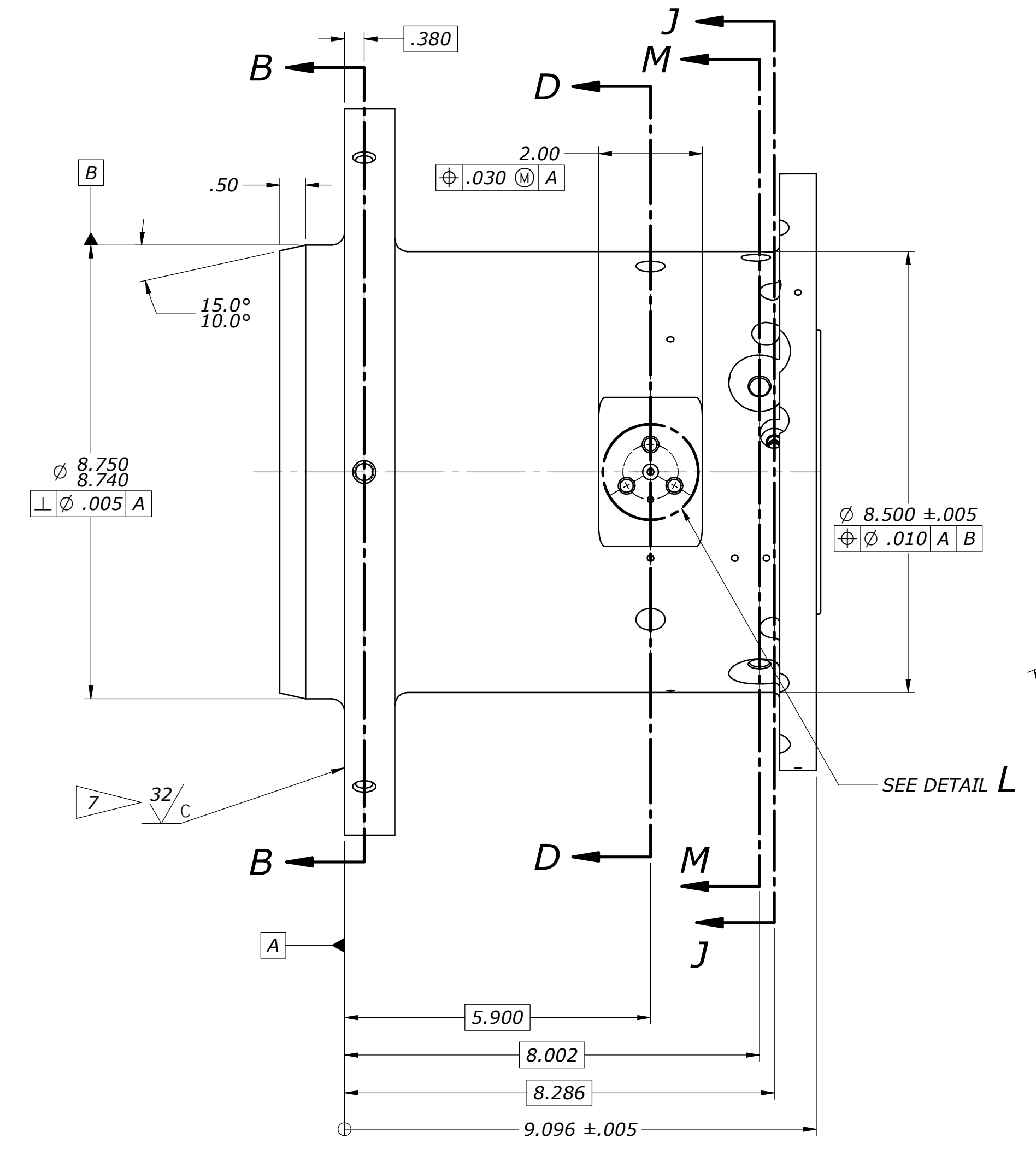
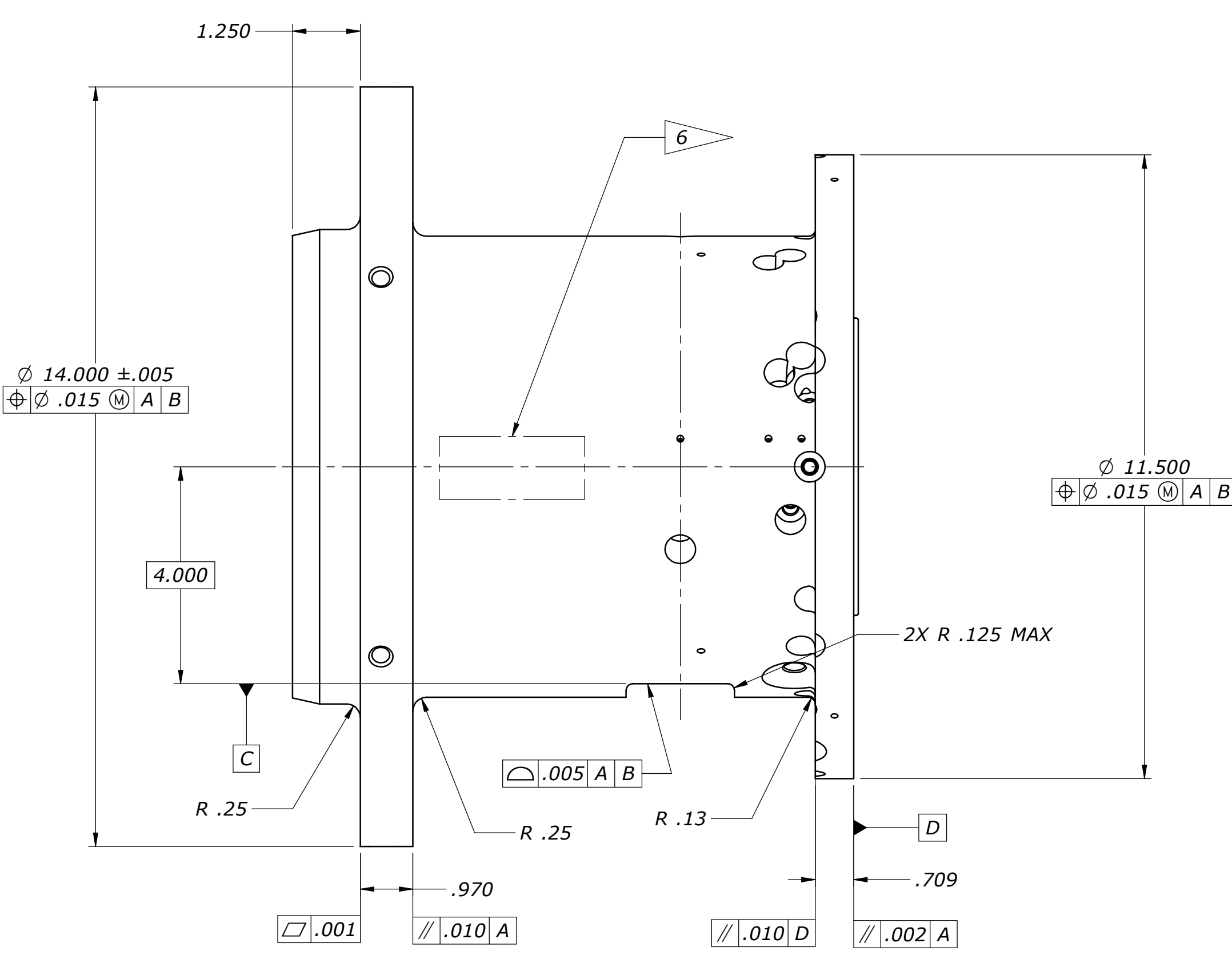


PART No.	M F	REVISIONS				DATE	APPROVAL
		ZONE	SYM	DESCRIPTION			

- NOTES: (UNLESS OTHERWISE SPECIFIED)**
- DIMENSIONING AND TOLERANCING PER ASME Y14.5M-1994.
- UNLESS SEPARATE TOLERANCES ARE SHOWN, PERFECT ORIENTATION AT MMC FOR RELATED FEATURES IS REQUIRED.
- GENERAL ANGULAR TOLERANCE DOES NOT APPLY TO IMPLIED 90 DEGREE ANGLES.
 - MATERIAL: 6061-T6 AL ALLOY PER ASTM-B221 (UNS A96061).
 - 63 MICROINCH ROUGHNESS FOR ALL MACHINED SURFACES.
 - REMOVE ALL BURRS AND BREAK ALL SHARP EDGES.
 - ANODIZE PER MIL-A-8625, TYPE II, CLASS 2. DYE FLAT BLACK.
 - IDENTIFY PART WITH ASSEMBLY PART NUMBER (MED0343-1) PER SAE AS478-3 OCR-A12 IN APPROX LOCATION SHOWN, ORIENTATION OPTIONAL.
 - SURFACE FINISH APPLIES WITHIN 11.00 DIAMETER.
 - DIMENSIONAL LIMITS APPLY AFTER ANODIZING.
 - CLEAN AND MAINTAIN PER JSC-SN-C-0005, VISUALLY CLEAN (VC).

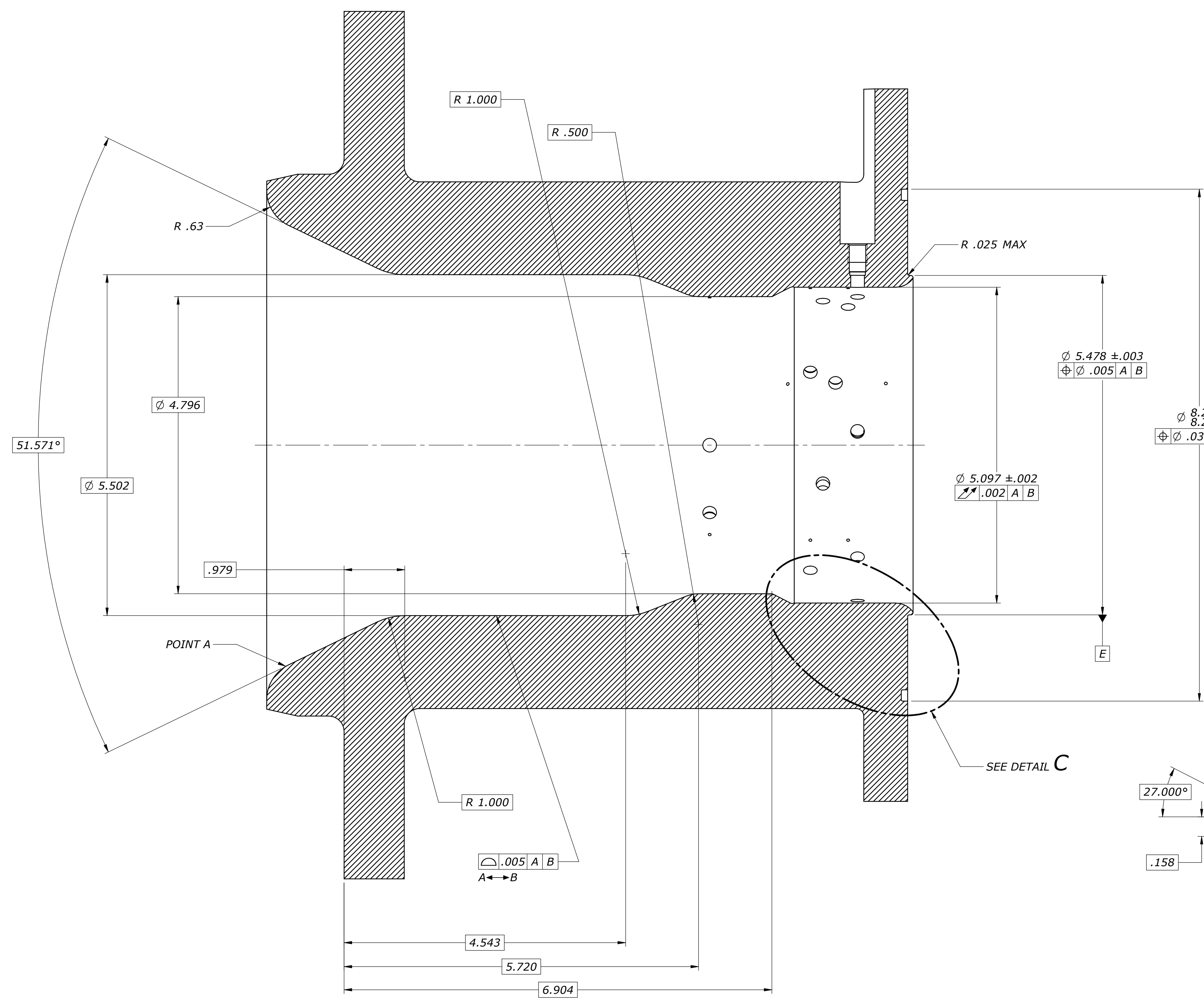


MED03436-1 SHOWN

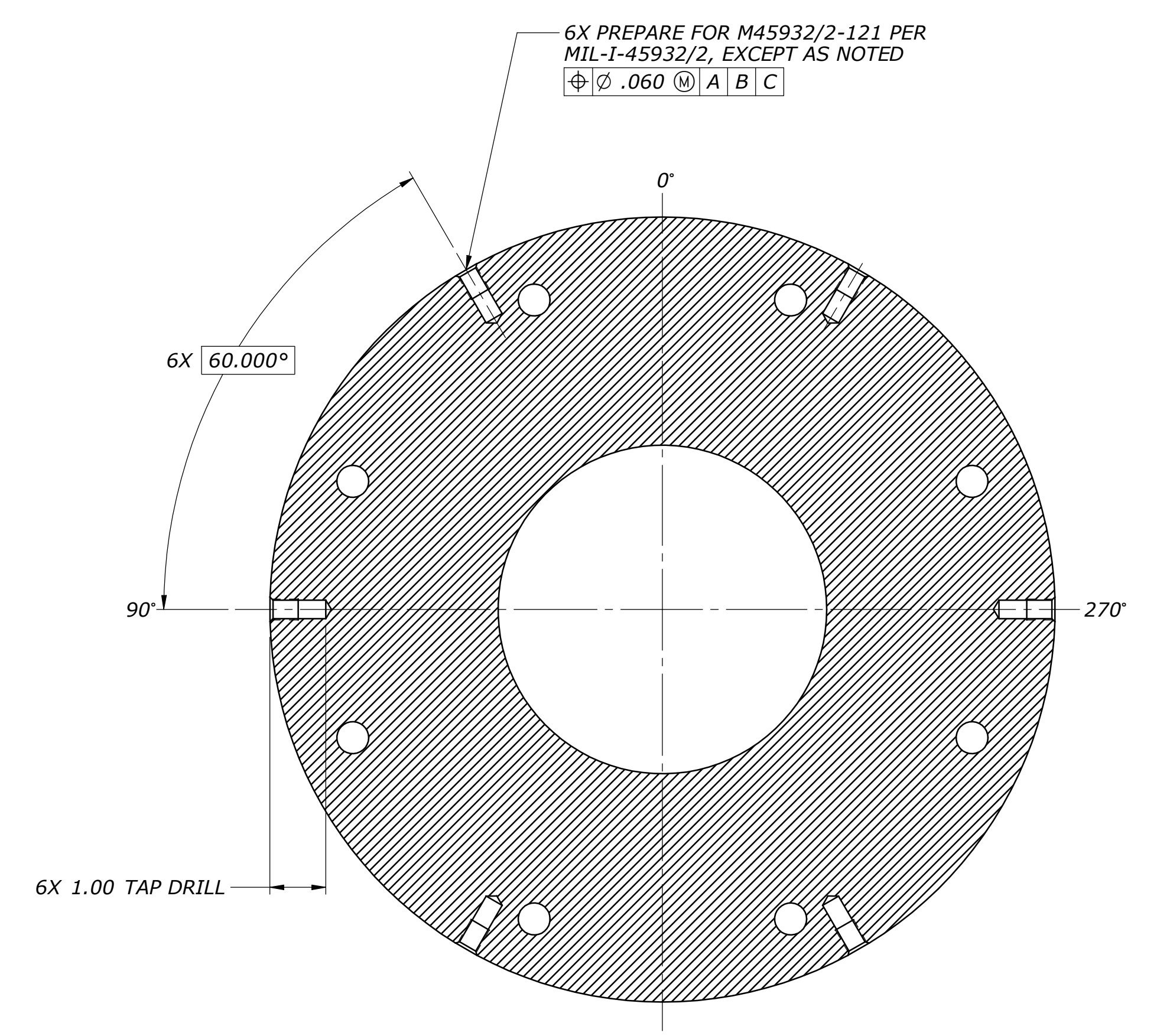
MED03436

TOLERANCE EXCEPT AS NOTED DIMENSIONS ARE IN INCHES		ORIGINAL DATE OF DRAWING 2008-12-10		GEORGE C. MARSHALL SPACE FLIGHT CENTER	
DECIMALS .XXX ± .010		ANGLES ± 2.0°		NATIONAL AERONAUTICS AND SPACE ADMINISTRATION	
MATERIAL J-2X WF		HEAT TREAT NONE		MARSHALL SPACE FLIGHT CENTER AL 35812	
HEAT TREAT NONE		FINAL FINISH 5		DRAFTSMAN DD GOODMAN	
MATERIAL J-2X WF		HEAT TREAT NONE		ENGINEER DD GOODMAN	
MATERIAL J-2X WF		HEAT TREAT NONE		MATERIALS DA	
MATERIAL J-2X WF		HEAT TREAT NONE		CHECKER J FORBES	
MATERIAL J-2X WF		HEAT TREAT NONE		SUBMITTED S SKELLEY	
MATERIAL J-2X WF		HEAT TREAT NONE		APPROVED D WHITTEN	
MATERIAL J-2X WF		HEAT TREAT NONE		EST WEIGHT 45 LBS	
MATERIAL J-2X WF		HEAT TREAT NONE		SCALE 1/2 & NOTED	
MATERIAL J-2X WF		HEAT TREAT NONE		CODE 339B2	
MATERIAL J-2X WF		HEAT TREAT NONE		DWG SIZE D	
MATERIAL J-2X WF		HEAT TREAT NONE		PART NO. MED03436	
MATERIAL J-2X WF		HEAT TREAT NONE		SHEET 1 OF 5	

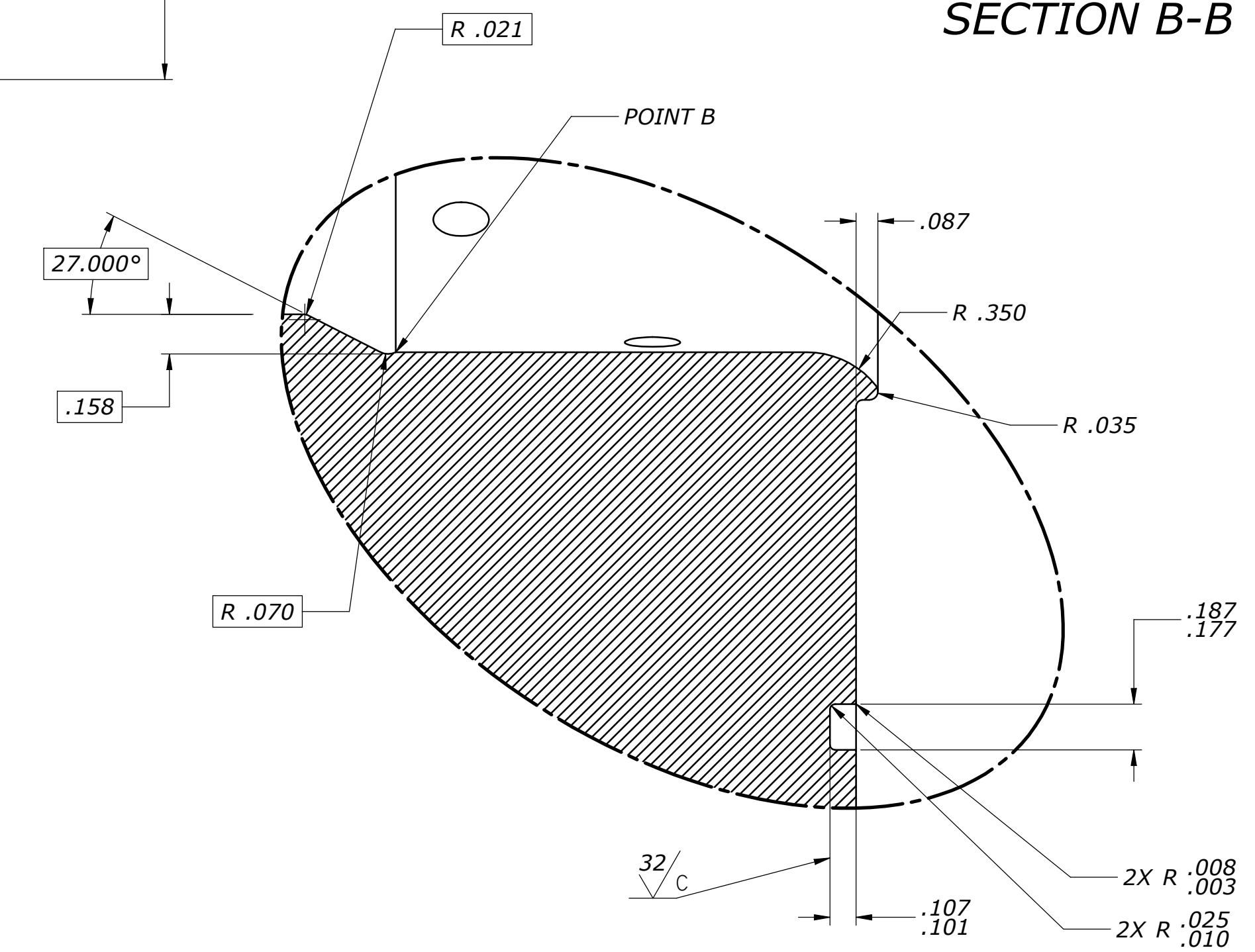
PART No.	M F	REVISIONS			DATE	APPROVAL
		ZONE	SYM	DESCRIPTION		



SECTION A-A
SCALE 1/1



SECTION B-B



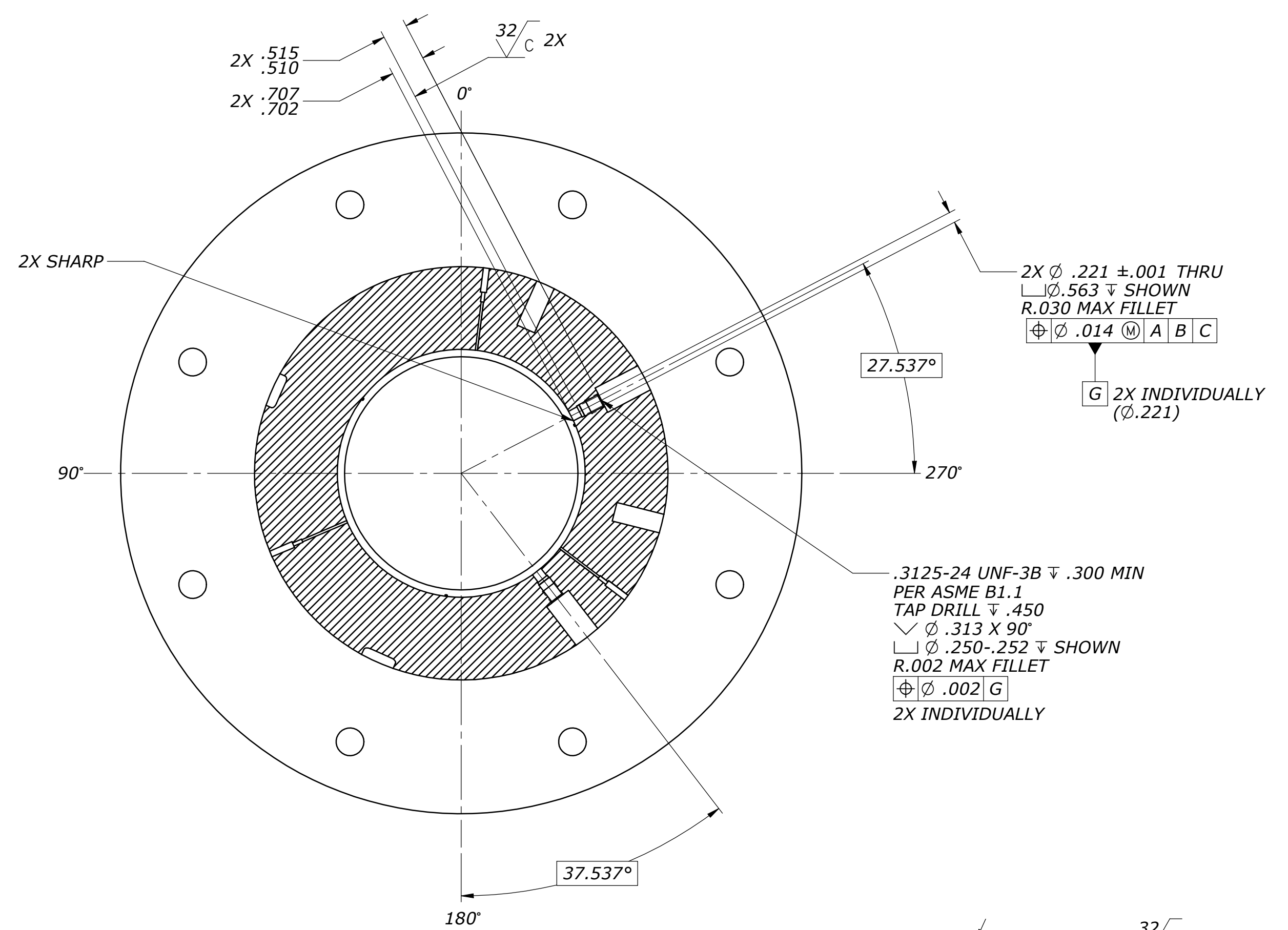
DETAIL C
SCALE 2/1

MED03436

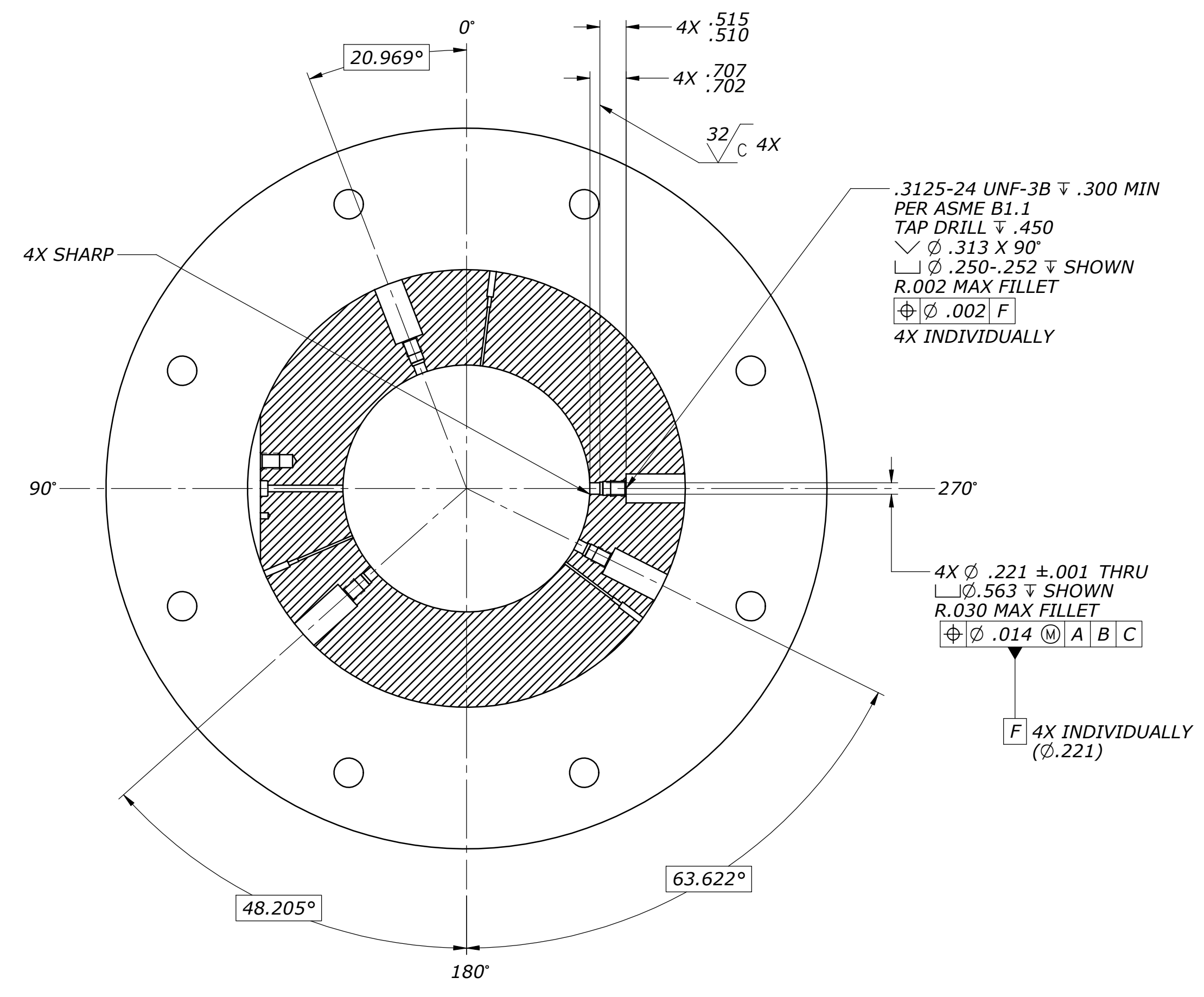
GEORGE C. MARSHALL
SPACE FLIGHT CENTER
NATIONAL AERONAUTICS
AND SPACE ADMINISTRATION
MARSHALL SPACE FLIGHT CENTER
AL 35812

ENGINEERING
DRAWING
D MED03436
SHEET 2 OF 5

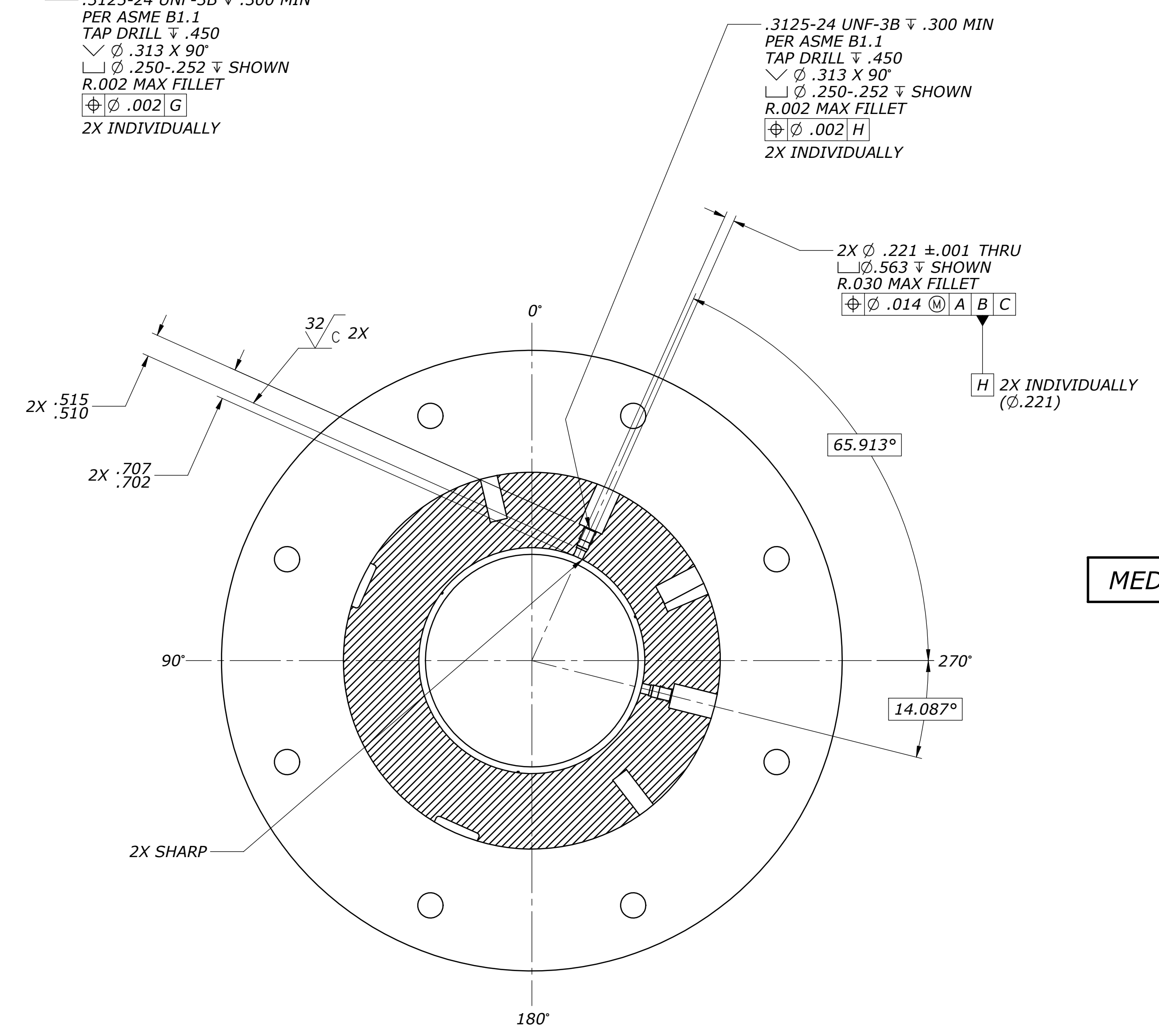
PART No.	M F	REVISIONS			DATE	APPROVAL
		ZONE	SYM	DESCRIPTION		



SECTION E-E



SECTION D-D



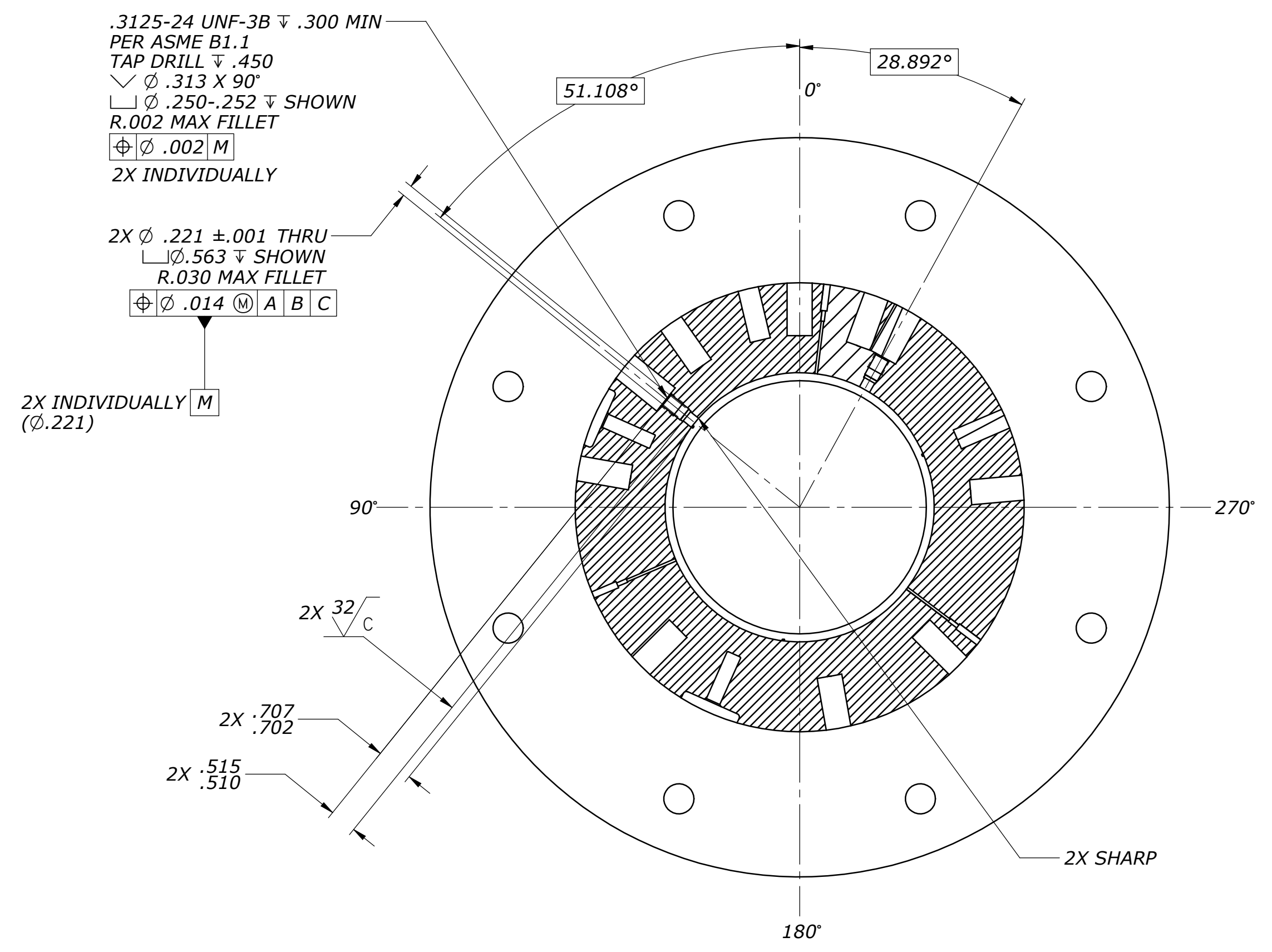
SECTION F-F

MED03436

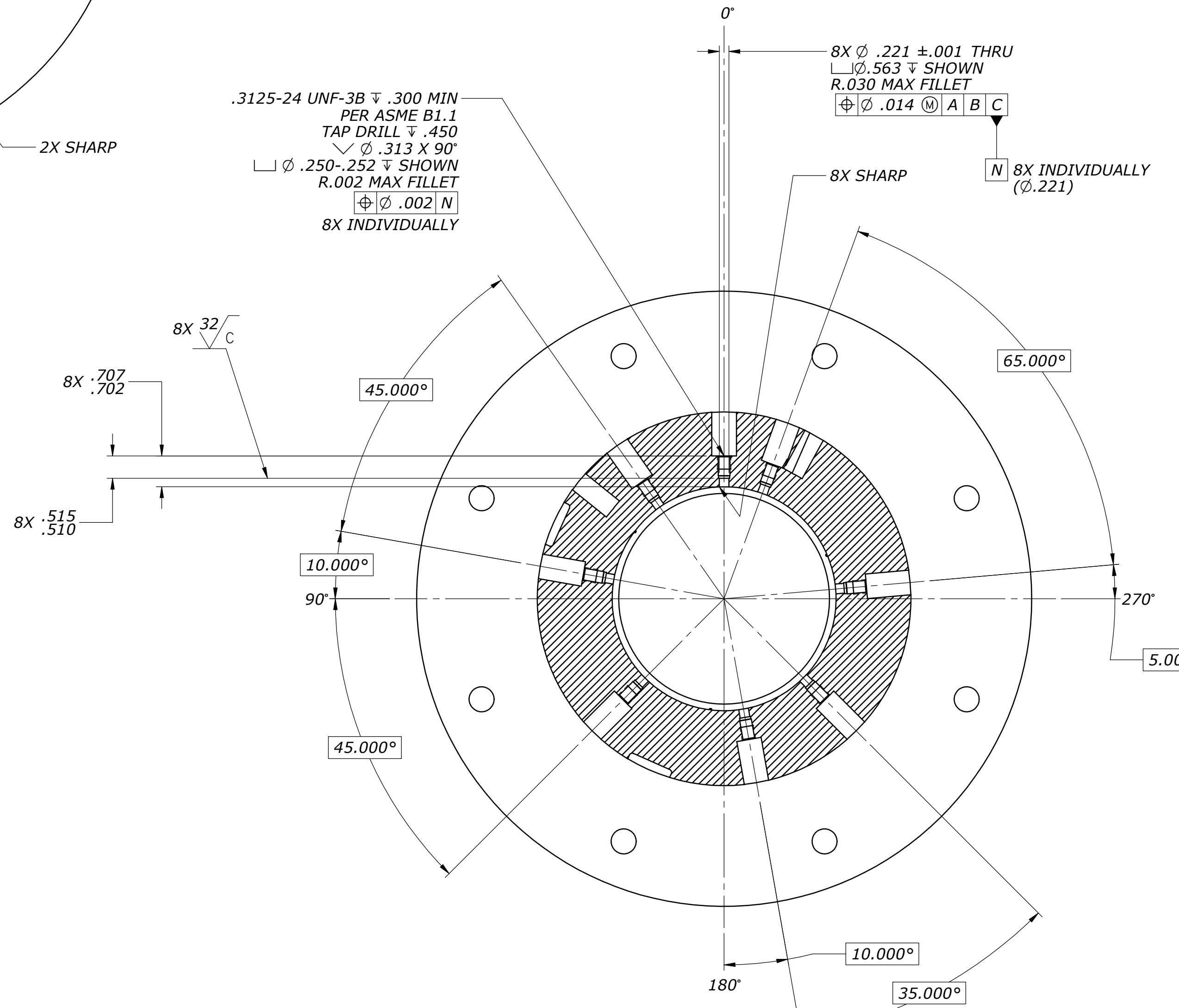
GEORGE C. MARSHALL
 SPACE FLIGHT CENTER
 NATIONAL AERONAUTICS
 AND SPACE ADMINISTRATION
 MARSHALL SPACE FLIGHT CENTER
 AL 35812

ENGINEERING
 DRAWING
D MED03436
 SHEET 3 OF 5

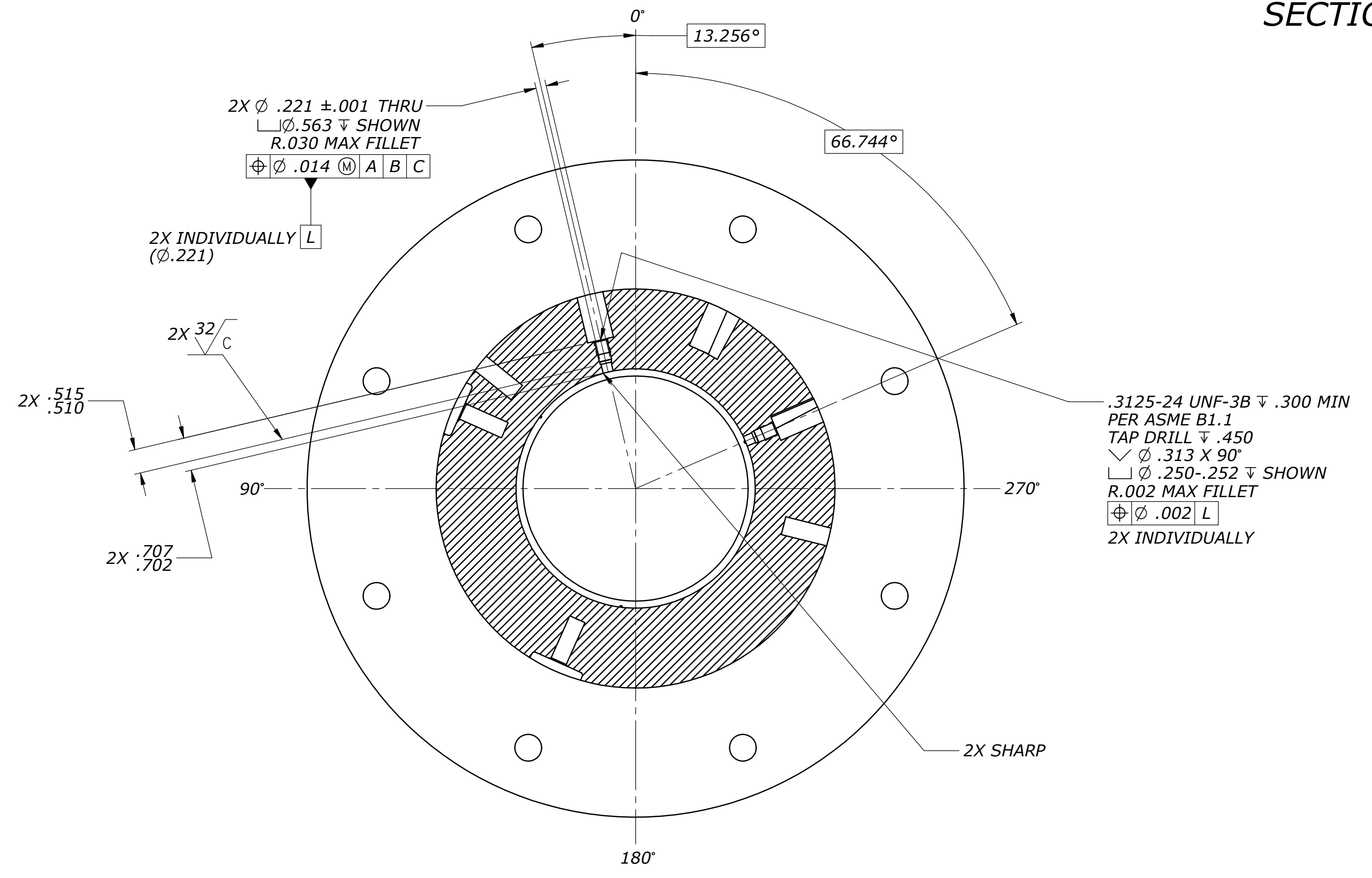
PART No.	M F	REVISIONS			DATE	APPROVAL
		ZONE	SYM	DESCRIPTION		



SECTION H-H



SECTION J-J



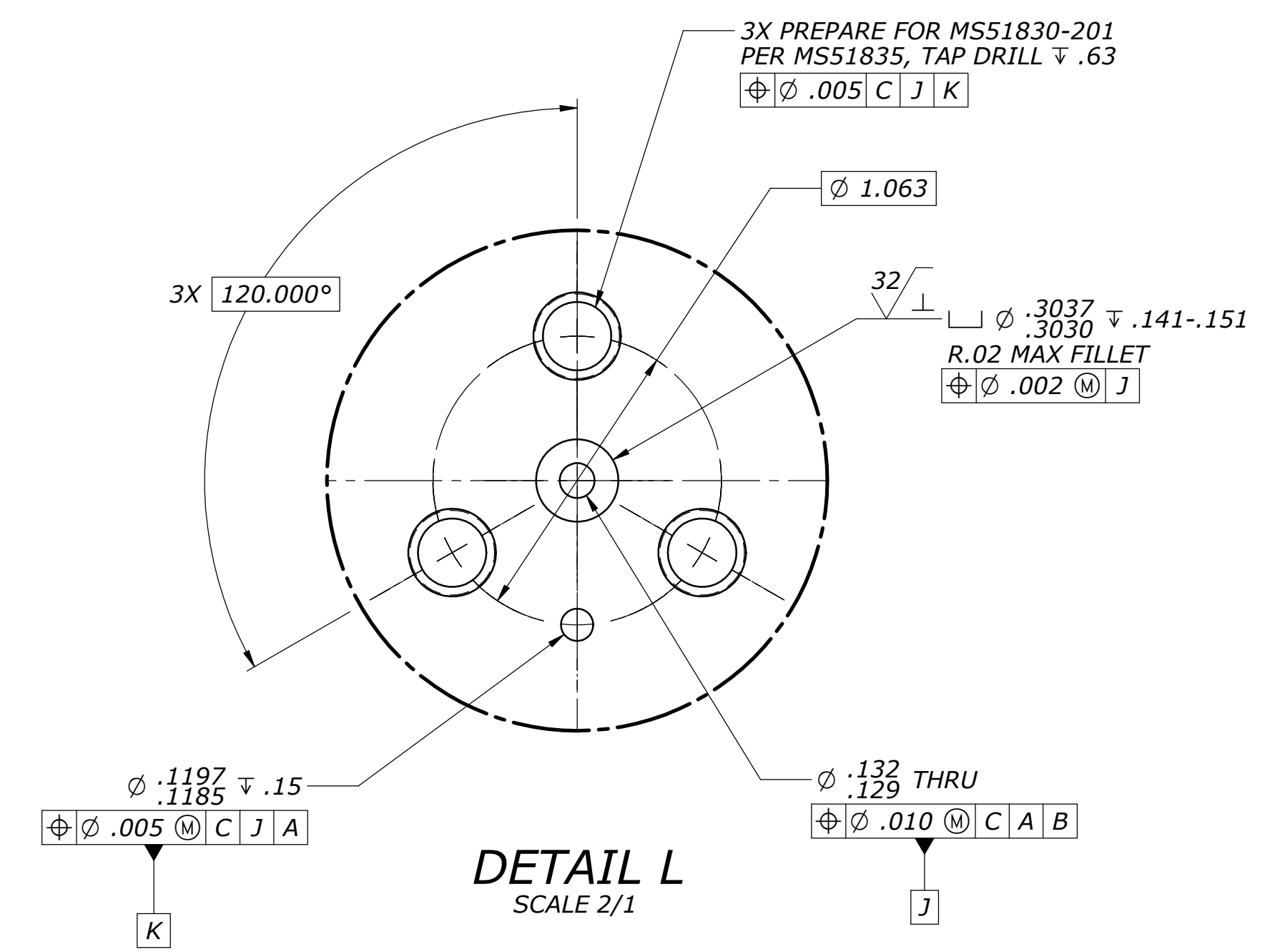
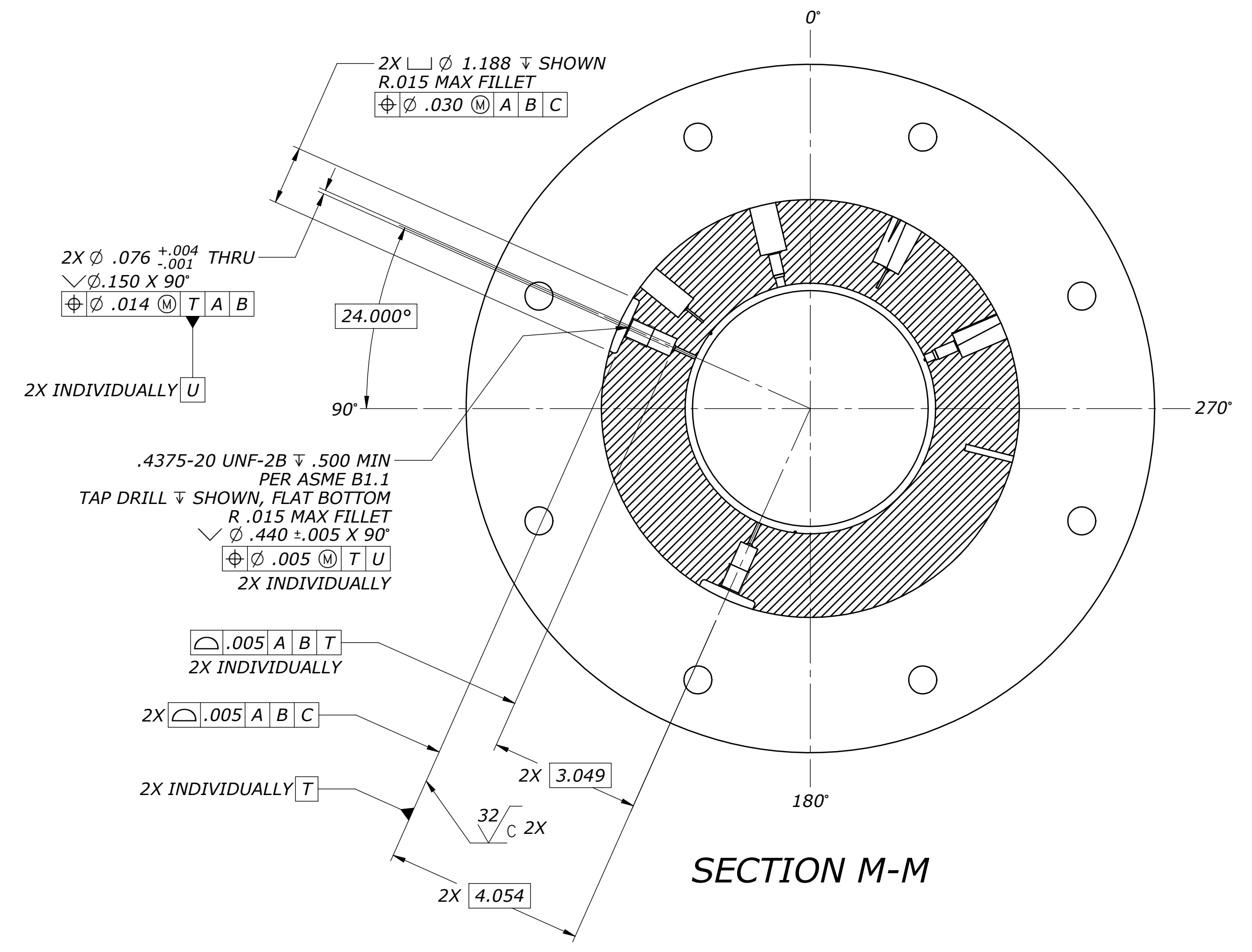
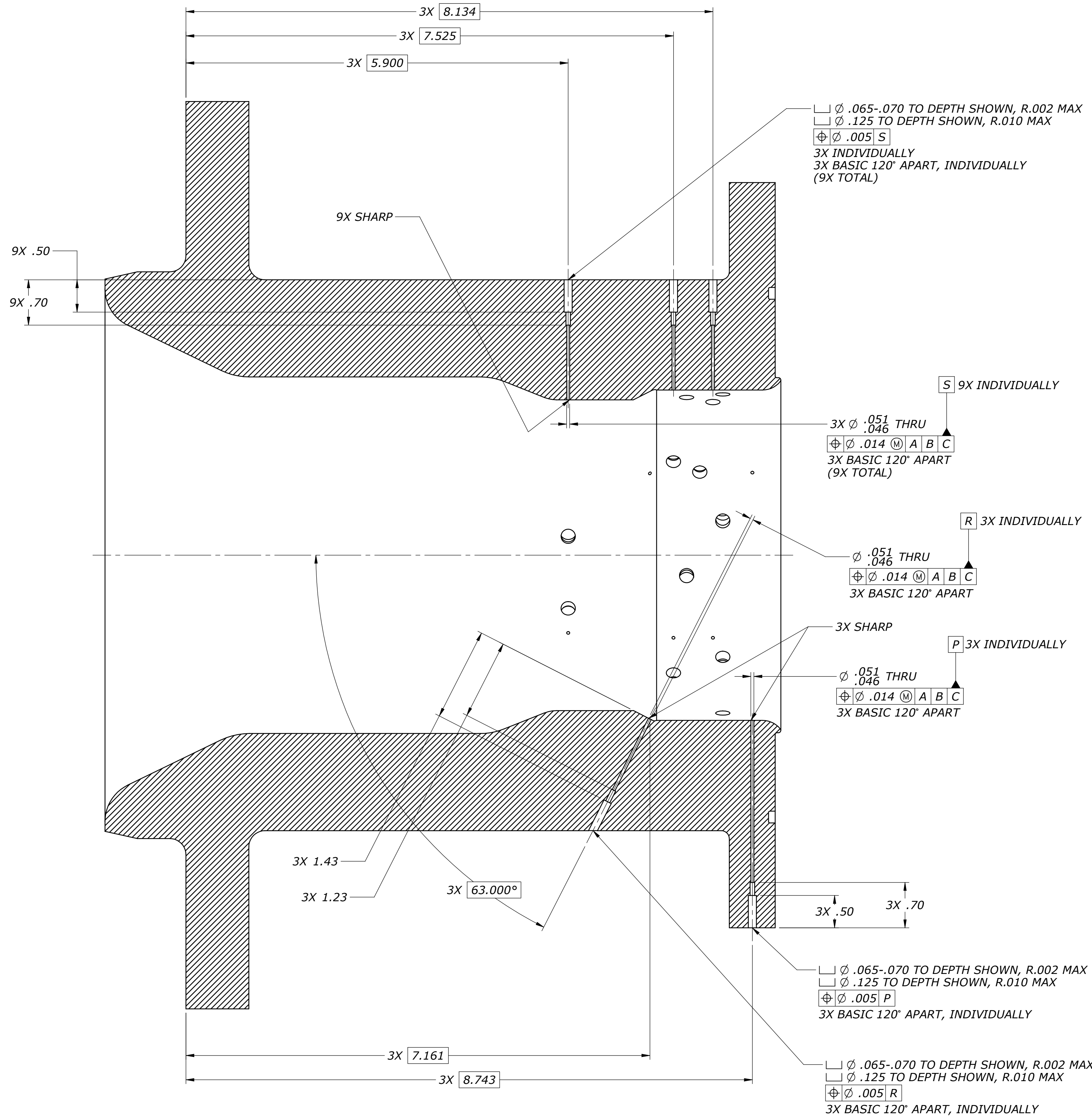
SECTION G-G

MED03436

GEORGE C. MARSHALL
SPACE FLIGHT CENTER
NATIONAL AERONAUTICS
AND SPACE ADMINISTRATION
MARSHALL SPACE FLIGHT CENTER
AL 35812

DMC
D MED03436
SHEET 4 OF 5

PART No.	M F	REVISIONS			DATE	APPROVAL
		ZONE	SYM	DESCRIPTION		



MED03436