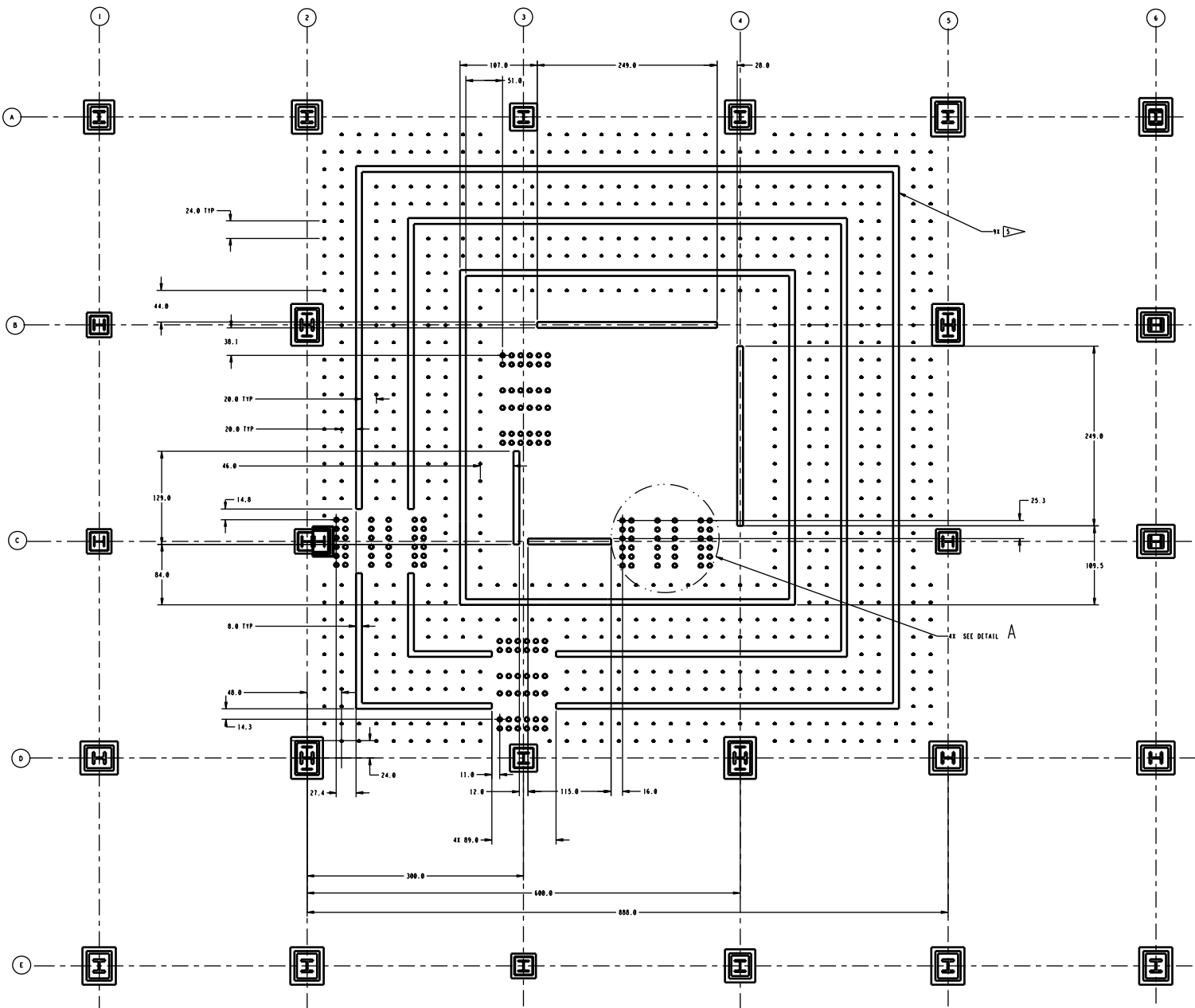


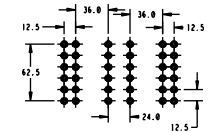
THIS DRAWING IS THE PROPERTY OF THE UNITED STATES GOVERNMENT AND IS LOANED TO YOUR ORGANIZATION. IT AND ITS CONTENTS ARE NOT TO BE DISTRIBUTED OUTSIDE YOUR ORGANIZATION. IT IS TO BE RETURNED TO THE OFFICE OF ORIGIN UPON REQUEST. IT IS TO BE KEPT IN A SAFE PLACE AND NOT TO BE REPRODUCED OR TRANSMITTED IN ANY FORM OR BY ANY MEANS, ELECTRONIC OR MECHANICAL, INCLUDING PHOTOCOPYING, RECORDING, OR BY ANY INFORMATION STORAGE AND RETRIEVAL SYSTEM.

TOP VIEW OF FLOOR INSERT PATTERN LOCATION IN BUILDING 4550

NO.	DESCRIPTION	REVISIONS	DATE	APPROVAL



- NOTES:
1. INSERTS LOCATED 36 ROWS X 36 COLUMNS.
 2. SPACING OF INSERTS @ 24" TYPICAL.
 3. INSERTS ARE Ø2.5" STAINLESS STEEL AND HAVE A 7/8" HEX HEAD BOLT 17' DEPTH UNKNOWN.
- STEEL PIPE Ø2.5" O.D. AND 5" WALL THICKNESS EMBEDDED IN CONCRETE FLUSH WITH THE SURFACE
 I-BEAM EMBEDDED IN CONCRETE AND FLUSH WITH THE SURFACE / DEPTH UNKNOWN



DETAIL A
SCALE 1/500

SCALE 1/50

UNLESS OTHERWISE SPECIFIED		FOR THIS DRAWING		FLOOR INSERTS LAYOUT IN BUILDING 4550		SPECIAL EQUIPMENT DESIGN BRANCH	
NO.	DESCRIPTION	DATE	BY	NO.	DESCRIPTION	DATE	BY
1	ISSUED	11-28-88	ASB	1			
2				2			
3				3			
4				4			
5				5			
6				6			
7				7			
8				8			
9				9			
10				10			
11				11			
12				12			
13				13			
14				14			
15				15			
16				16			
17				17			
18				18			
19				19			
20				20			
21				21			
22				22			
23				23			
24				24			
25				25			
26				26			
27				27			
28				28			
29				29			
30				30			
31				31			
32				32			
33				33			
34				34			
35				35			
36				36			
37				37			
38				38			
39				39			
40				40			
41				41			
42				42			
43				43			
44				44			
45				45			
46				46			
47				47			
48				48			
49				49			
50				50			
51				51			
52				52			
53				53			
54				54			
55				55			
56				56			
57				57			
58				58			
59				59			
60				60			
61				61			
62				62			
63				63			
64				64			
65				65			
66				66			
67				67			
68				68			
69				69			
70				70			
71				71			
72				72			
73				73			
74				74			
75				75			
76				76			
77				77			
78				78			
79				79			
80				80			
81				81			
82				82			
83				83			
84				84			
85				85			
86				86			
87				87			
88				88			
89				89			
90				90			
91				91			
92				92			
93				93			
94				94			
95				95			
96				96			
97				97			
98				98			
99				99			
100				100			

REVISION

SPECIAL EQUIPMENT
 DESIGN BRANCH
 GEORGE C. MARSHALL
 SPACE FLIGHT CENTER
 3600 UNIVERSITY AVENUE
 HUNTSVILLE, ALABAMA 35894-0001
 (205) 844-2000