

4

3

2

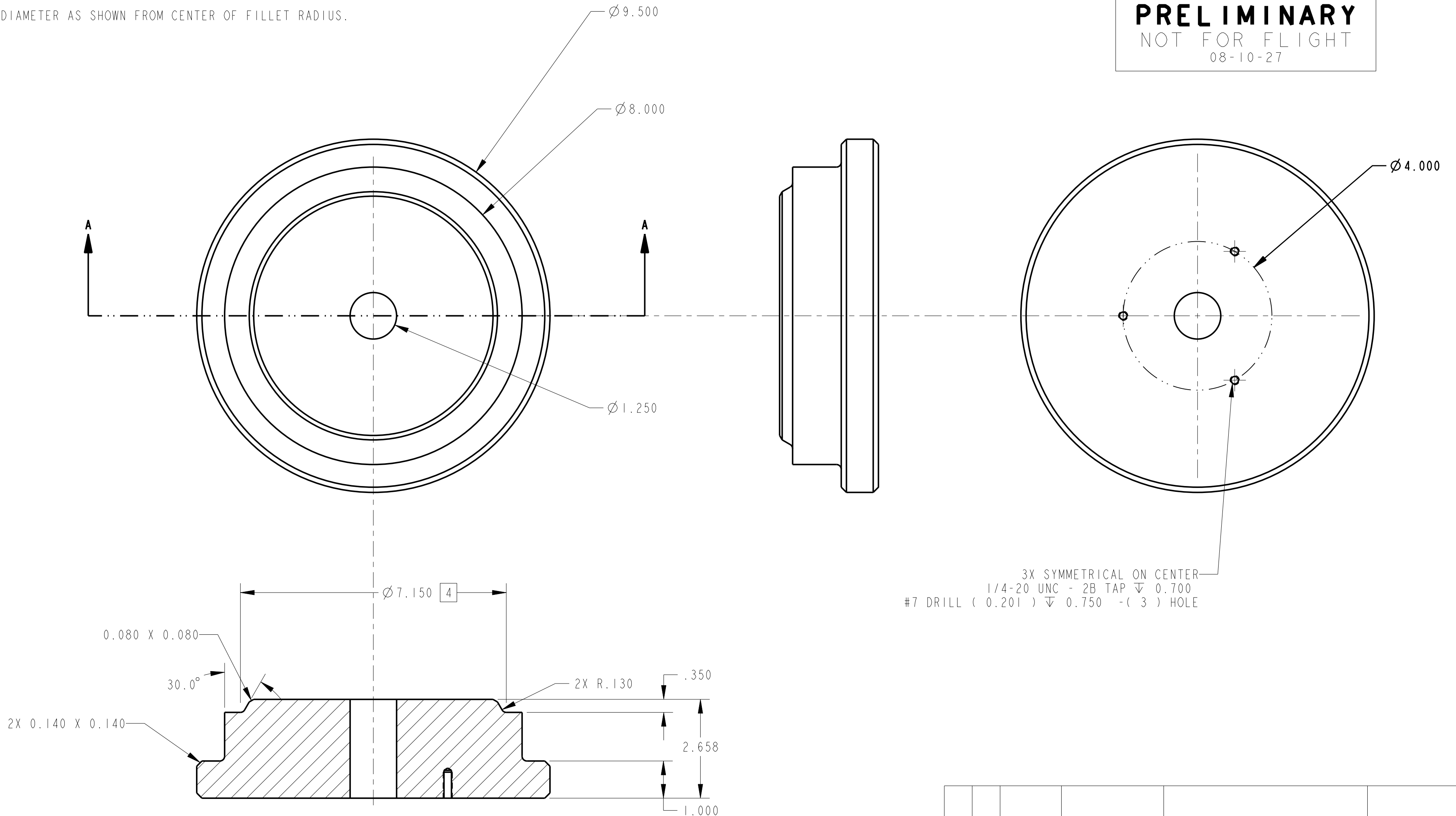
1

NOTES:

- 1. APPLICABLE STANDARDS/SPECIFICATIONS:
MIL-STD-100, DOD STANDARD PRACTICE FOR ENGINEERING DRAWINGS,
ASME Y14.100M, ENGINEERING DRAWING PRACTICES,
MIL-T-31000, TECHNICAL DATA PACKAGES.
- 2. BREAK ALL SHARP EDGES AND REMOVE ALL BURRS.
- 3. SURFACE ROUGHNESS SHALL BE 250 RMS OR BETTER.
- 4. DIAMETER AS SHOWN FROM CENTER OF FILLET RADIUS.

REVISION HISTORY							
ZONE	REV	DESCRIPTION	DRAWN	CHECKED	LEAD ENGR	BRANCH	DATE

PRELIMINARY
NOT FOR FLIGHT
08-10-27



3X SYMMETRICAL ON CENTER
1/4-20 UNC - 2B TAP ∇ 0.700
#7 DRILL (0.201) ∇ 0.750 - (3) HOLE

SECTION A-A

QTY REQD	CAGE CODE	PART OR IDENTIFYING NO.	NOMENCLATURE OR DESCRIPTION	MATERIAL SPECIFICATION	ITEM NO.

PARTS LIST		CONTRACT NO.		NATIONAL AERONAUTICS & SPACE ADMINISTRATION LANGLEY RESEARCH CENTER HAMPTON, VIRGINIA 23681-2199	
UNLESS OTHERWISE SPECIFIED DIMENSIONS ARE IN INCHES. TOLERANCES DECIMALS ANGULAR .XX ± .03 .X ± .5° .XXX ± .010	APPROVAL	DATE	TITLE	SIZE	CAGE CODE
DO NOT SCALE DRAWING.	DRAWN		PICA COMP PAD #4	C	25305
TREATMENT	CHECKED		SCALE	1/2	
FINISH	DESIGNER				
	LEAD ENGR				
	BRANCH				

PART DASH NO.	NEXT QTY	FINAL REOD	NEXT ASSY PER	USED ON ASSY	APPLICATION

CAGE CODE 25305 DWG NO. PICA_COMPRESSION_PAD_4 SH REV -

4

3

2

1

A