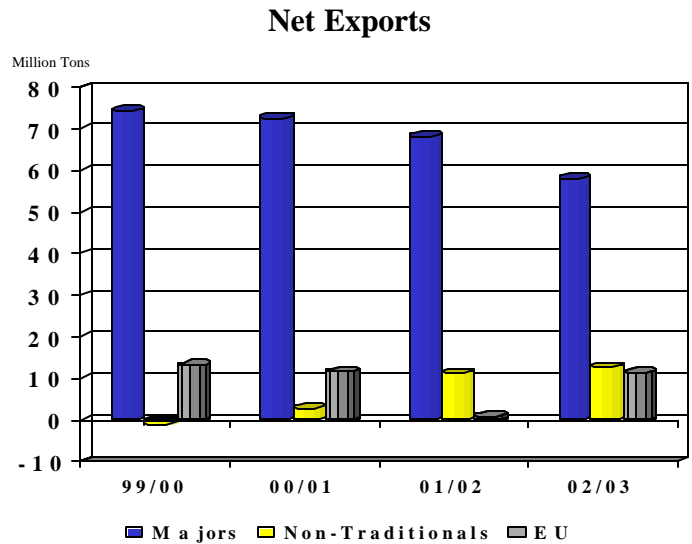
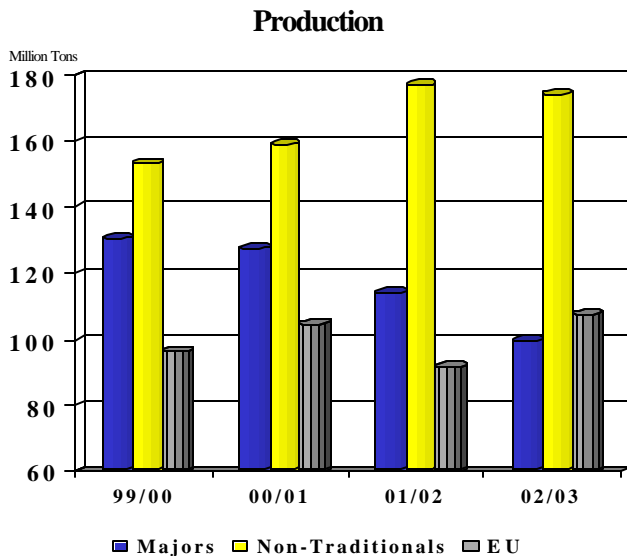




Grain: World Markets and Trade

Wheat Supplies Tighten Among Top Exporters But Impact Diminished by Others



Majors = U.S.A., Australia, Canada, and Argentina

Non-Traditionals = FSU, India, and Turkey

Significantly lower production among last year's top four global exporters is expected to cause their shipments to fall by 10 million tons, which is equivalent to nearly 10 percent of global trade. However, the EU and non-traditional exporters will partially mitigate the impact.

The top four exporters are considered to be the predominant suppliers of good quality milling wheats, and their reduced exportable supplies have led to dramatically higher prices. For example, HRW FOB Gulf prices soared nearly \$30/ton in just 60 days, widening the gap between lower quality wheats from the EU and non-traditional suppliers.

Meanwhile, exportable supplies from the FSU, India, and Turkey are expected to remain high with forecast net exports 10 million tons greater than just 2 years ago. Additionally, with record crop prospects, the EU will rebound from being the largest global importer to a large net exporter. Supplies from the EU and non-traditionals are typically lower quality than the majors.

TABLE OF CONTENTS

Summary Tables

All Grain Summary	3
U.S. Grains	4

Foreign Countries' Policies and Programs

Brazilian Wheat Market Opens to Global Suppliers	5
--	---

Situation and Outlook: Commentary and Current Data

Wheat	7
Rice.....	13
Coarse Grains	18

Historical Data Series for Selected Regions and Countries	33
--	----

Endnotes to Grain: World Markets and Trade	47
---	----

**ALL GRAIN SUMMARY
PRODUCTION, CONSUMPTION, STOCKS AND TRADE
TOTAL FOREIGN COUNTRIES, USA, AND TOTAL WORLD
(MILLION METRIC TONS)**

	1998/99	1999/00	2000/01	2001/02 11-Jul	2001/02 12-Aug	2002/03 11-Jul	2002/03 12-Aug
WHEAT							
All Foreign Countries							
Production	520.3	523.6	523.1	526.3	526.3	533.1	526.4
Consumption	545.3	553.7	554.3	554.7	554.0	561.5	562.3
Ending Stocks	152.5	149.6	144.8	139.6	140.3	132.9	126.0
USA							
Production	69.3	62.6	60.8	53.3	53.3	47.6	45.9
Imports	2.8	2.5	2.4	2.8	2.9	2.8	2.8
Consumption	37.6	35.4	36.3	32.8	32.9	32.8	32.6
Exports	29.0	29.4	27.8	26.5	26.2	24.5	24.5
Ending Stocks	25.7	25.8	23.8	21.0	21.0	14.1	12.7
World Total, Trade	102.0	112.8	103.5	107.5	107.6	103.9	102.4
RICE							
All Foreign Countries							
Production	388.3	402.7	391.4	388.2	389.8	388.1	378.0
Consumption	383.7	394.5	392.7	403.4	400.0	405.8	404.7
USA							
Production	5.8	6.5	5.9	6.8	6.8	6.4	6.5
Imports	0.4	0.3	0.4	0.4	0.4	0.4	0.4
Consumption	3.6	3.8	3.7	3.9	3.9	4.0	4.0
Exports	2.6	2.8	2.5	3.0	3.0	2.9	3.0
World Total, Trade	24.9	22.8	24.5	25.0	24.9	25.9	25.6
TOTAL COARSE GRAINS							
All Foreign Countries							
Production	617.5	612.9	585.0	620.9	621.6	632.0	621.3
Consumption	664.2	669.6	666.1	683.5	682.7	695.0	688.4
USA							
Production	271.5	263.2	273.1	261.9	261.9	270.7	243.1
Imports	2.7	2.6	2.7	2.3	2.3	3.0	2.8
Consumption	205.3	212.1	215.4	216.0	216.2	218.2	212.0
Exports	57.7	56.6	55.2	56.0	55.2	59.5	57.4
Ending Stocks	51.4	48.9	52.7	45.3	45.9	41.6	22.9
World Total, Trade	96.5	104.5	103.7	101.8	102.1	100.4	100.1
WORLD TOTAL GRAIN, INCLUDING RICE							
All Foreign Countries							
Production	1,526.0	1,539.2	1,499.5	1,535.4	1,537.7	1,553.2	1,525.6
Consumption	1,593.1	1,617.7	1,613.1	1,641.7	1,636.7	1,662.3	1,655.4
USA							
Production	346.6	332.2	339.8	321.9	321.9	324.6	295.4
Imports	5.9	5.4	5.5	5.5	5.6	6.2	6.1
Exports	89.4	88.9	85.6	85.5	84.4	86.9	84.9
World Total, Trade	223.5	240.1	231.6	234.4	234.6	230.3	228.1

Trade data are reported on an international year basis. All other data are reported using marketing years. Rice production data is on a milled basis.

**U.S. GRAINS: SUPPLY AND DISTRIBUTION
WHEAT, CORN, SORGHUM, BARLEY, OATS, RYE AND RICE
THOUSAND METRIC TONS/HECTARES**

	Area		--Imports--		--Exports--		Domestic	Domestic	Ending	
	Harvested	Yield	Production	Mkt Yr.	Trade Yr.	Mkt Yr.	Trade Yr.	Feed Use	Total Use	Stocks
WHEAT (MY JUNE/MAY)										
1997/98	25,431	2.7	67,534	2,583	2,530	28,315	28,090	6,818	34,212	19,663
1998/99	23,877	2.9	69,327	2,800	2,842	28,467	29,028	10,645	37,579	25,744
1999/00	21,781	2.9	62,569	2,568	2,503	29,626	29,449	7,842	35,407	25,848
2000/01	21,502	2.8	60,758	2,445	2,417	28,904	27,845	8,285	36,301	23,846
2001/02	19,689	2.7	53,278	2,927	2,850	26,163	26,200	5,353	32,880	21,008
2002/03	19,274	2.4	45,894	2,858	2,800	24,494	24,500	4,763	32,551	12,715
CORN (MY SEPT/AUG)										
1997/98	29,409	8.0	233,864	224	126	38,214	37,697	139,243	185,087	33,220
1998/99	29,376	8.4	247,882	478	388	50,401	51,949	138,890	185,788	45,391
1999/00	28,525	8.4	239,549	375	229	49,191	49,378	143,896	192,496	43,628
2000/01	29,316	8.6	251,854	173	120	49,313	48,192	148,396	198,102	48,240
2001/02	27,846	8.7	241,485	254	375	48,262	48,500	147,962	200,162	41,555
2002/03	28,733	7.9	225,715	381	450	50,802	51,000	142,247	197,367	19,482
SORGHUM (MY SEPT/AUG)										
1997/98	3,706	4.3	16,093	0	0	5,387	5,164	9,270	10,670	1,242
1998/99	3,125	4.2	13,207	0	0	4,996	5,194	6,652	7,798	1,655
1999/00	3,458	4.4	15,118	0	0	6,484	6,297	7,232	8,628	1,661
2000/01	3,127	3.8	11,952	0	0	6,009	5,866	5,651	6,543	1,061
2001/02	3,474	3.8	13,070	0	0	6,096	6,200	5,461	6,606	1,429
2002/03	3,055	3.2	9,640	0	0	5,588	5,900	3,429	4,572	909
BARLEY (MY JUNE/MAY)										
1997/98	2,508	3.1	7,835	876	748	1,619	1,071	3,135	6,879	2,596
1998/99	2,373	3.2	7,667	649	597	621	550	3,505	7,207	3,084
1999/00	1,916	3.2	6,103	602	627	613	852	3,007	6,752	2,424
2000/01	2,110	3.3	6,939	636	646	1,258	1,065	2,683	6,427	2,314
2001/02	1,736	3.1	5,434	521	475	579	500	1,923	5,669	2,021
2002/03	1,821	3.0	5,480	544	500	435	500	2,177	5,922	1,688
OATS (MY JUNE/MAY)										
1997/98	1,138	2.1	2,428	1,696	1,942	31	31	2,947	3,987	1,074
1998/99	1,115	2.2	2,409	1,856	1,599	25	24	3,132	4,133	1,181
1999/00	993	2.1	2,122	1,699	1,675	26	20	2,881	3,872	1,104
2000/01	943	2.3	2,171	1,827	1,825	25	33	3,034	4,021	1,056
2001/02	771	2.2	1,696	1,654	1,300	41	35	2,402	3,448	917
2002/03	1,066	1.9	2,070	1,724	1,750	29	25	2,812	3,858	824
RYE (MY JUNE/MAY)										
1997/98	128	1.6	207	141	118	2	2	135	346	19
1998/99	169	1.8	309	84	75	1	2	105	349	62
1999/00	155	1.8	280	87	76	7	10	146	382	40
2000/01	120	1.8	213	82	81	10	8	59	295	30
2001/02	103	1.7	177	126	150	5	4	77	314	14
2002/03	111	1.7	191	102	125	6	4	50	287	14
	Area		--Production--		--Imports--		--Exports--		Domestic	Ending
	Harvested	Yield	Rough	Milled	Mkt Yr.	Trade Yr.	Mkt Yr.	Trade Yr.	Total Use	Stocks
RICE (MY AUG/JULY)										
1997/98	1,256	6.6	8,301	5,750	294	299	2,755	3,174	3,278	866
1998/99	1,318	6.3	8,367	5,798	336	358	2,730	2,644	3,587	877
1999/00	1,421	6.6	9,345	6,502	321	308	2,804	2,847	3,846	867
2000/01	1,230	7.0	8,658	5,941	345	413	2,590	2,541	3,676	887
2001/02	1,341	7.2	9,663	6,764	421	420	3,016	2,950	3,889	1,167
2002/03	1,306	7.2	9,358	6,457	429	430	2,879	2,950	3,969	1,205

Notes:

Wheat trade year statistics are on July/June years. Barley, corn, sorghum, rye, and oats trade year statistics are on Oct/Sept years. Rice trade year statistics are for the subsequent calendar year.



FOREIGN COUNTRIES' POLICIES AND PROGRAMS

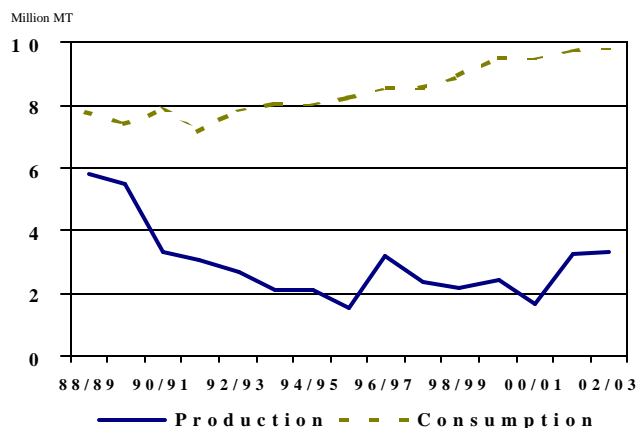
BRAZILIAN WHEAT MARKET OPENS TO GLOBAL SUPPLIERS

Brazil is currently searching global markets for wheat supplies as prices are skyrocketing in its traditional supplier Argentina. This situation is creating an opportunity for the United States, Canada, and many non-traditional suppliers to increase sales to the market.

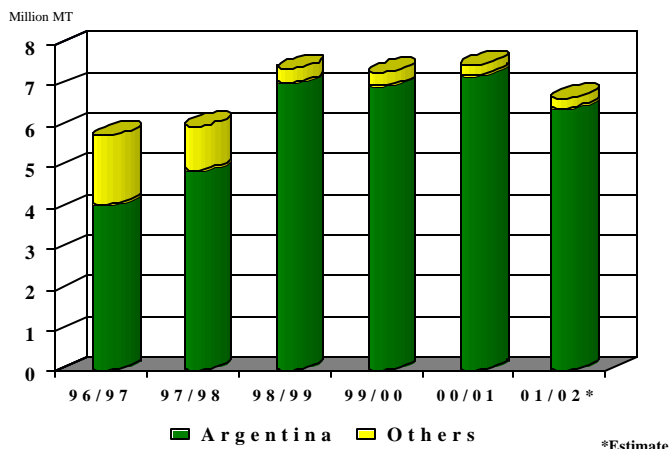
In the past, Brazil has followed a self-sufficiency policy for wheat but with only limited success and at considerable cost. However, the government continues to focus on expanding production into non-traditional growing areas and the total area planted to wheat is up, largely due to higher support prices. Nevertheless, production meets only about a third of the country's consumption needs. Therefore, Brazil has been among the top three global wheat importers over the past decade. Argentina is the main supplier to this massive market because of an obvious freight advantage combined with a preferential tariff rate as a Mercosul member. In fact, it has supplied 95 percent of Brazil's import needs over the past 3 years with only small amounts shipped by the United States and Canada.

Typically, Argentine exports slow and prices rise from June to November as supplies tighten prior to harvest. However, this year Argentine prices have soared to unusually high levels reflecting tight old crop supplies and concerns over future supplies with the 2002/03 wheat crop forecast smaller than last year. Planted area will likely be down as a result of the high cost of inputs, tight credit, and economic uncertainty. Exacerbating the problem is the fact that Argentine farmers are retaining wheat as a form of currency. Therefore, Brazilian millers, which need to import over the next

Brazil's Wheat Supply and Use



Brazilian Imports by Source



*Estimate

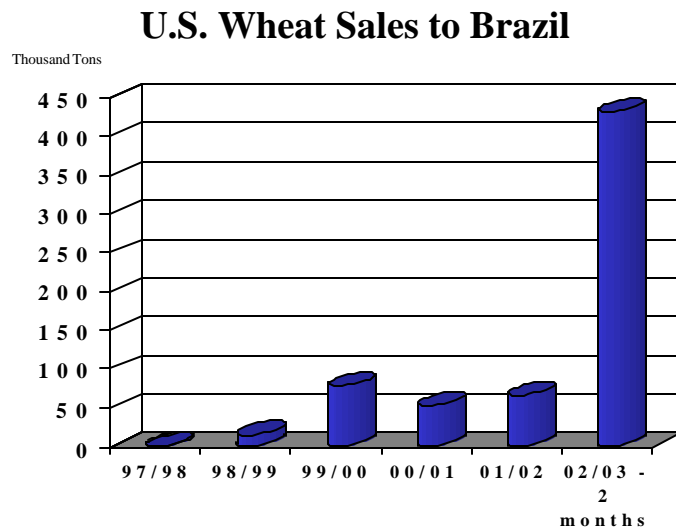
few months before their local harvest, have been forced to look elsewhere for supplies. Millers are requesting that the 11.5 percent Common External Tariff (CET) placed on non-Mercosul wheat be removed. Though the CET was recently removed in Uruguay, it is unlikely to occur in Brazil, given resistance from domestic producers.

For several years, Brazil restricted U.S. wheat imports due to several phytosanitary issues. However, in October of 2000, Brazil lifted most of its long-standing restrictions, but imports from the U.S. did not rise as many had anticipated. U.S. exports to Brazil in 2000/01 and 2001/02 combined were less than 120,000 tons. Nevertheless, the United States appears to be the main beneficiary of Brazilian needs this year with sales reaching 430,000 tons as of August 1, including nearly 350,000 of Hard Red Winter and 85,000 of Soft Red Winter.

Meanwhile, small amounts of Canadian wheat have been purchased as well as some from non-traditional sources. Purchases from Poland, estimated at 120,000 tons, are particularly surprising given Brazilian phytosanitary restrictions, which apparently have been eased to accommodate the urgent need for wheat.

In addition, Ukraine is reported to have exported to Brazil for the first time ever. A shipment of 35,000 tons is reported with speculation of 100,000 tons more in sales. There are also rumors that Russian and French wheat may be imported in the near future. This leads to an interesting situation in which the United States, Canada, and new suppliers will be battling over the next few months for a Brazilian market typically dominated by Argentina.

For more information, contact: Oliver Flake, 202-690-4200





SITUATION AND OUTLOOK: COMMENTARY AND CURRENT DATA

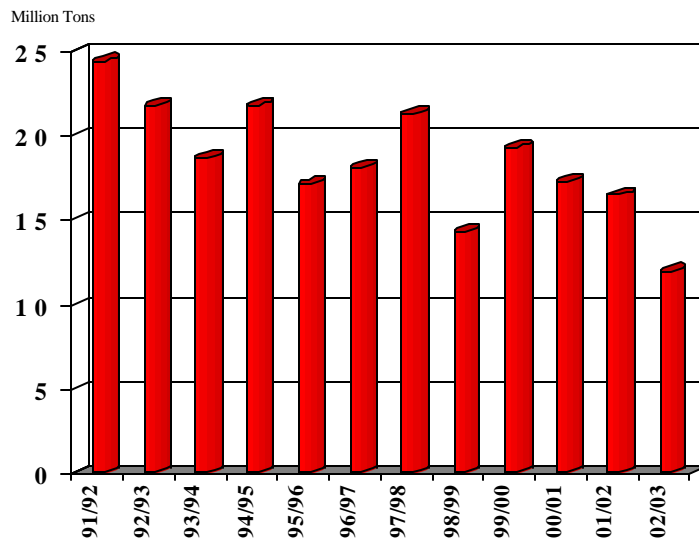
WORLD WHEAT SITUATION AND OUTLOOK

World wheat trade in 2002/03 is forecast to be 102.4 million tons, down 5.2 million tons from 2001/02. Global production is forecast down 7.3 million tons and consumption up 8 million tons from the previous year. Global stocks are forecast to fall by 22.6 million tons to the lowest level since 1995/96.

In early August, export quotes for #2 HRW FOB Gulf averaged \$158/MT, up \$15 from last month and up nearly \$30 from early June. Global production is down 8.5 million tons from last month with lower crops in Australia, Canada, the United States, and the EU only minimally offset by larger crops in Brazil, Kazakstan, and Uzbekistan. Global consumption is forecast up 0.6 million tons, while ending stocks are forecast down 8.3 million tons from last month. Global wheat trade in 2002/03 is forecast down 1.6 million tons from last month largely because of reduced imports in Brazil, Iran, South Korea, and Uzbekistan. Much smaller exports by Australia and Canada are only partially offset by more exports from the EU, India, Kazakstan, and Ukraine.

Poor growing conditions in Canada are expected to reduce exportable supplies (production and beginning stocks) by more than 6 million tons from last year and 10 million from just two years ago. As a result, exports, which have been falling since the early 1990s, are forecast at the lowest level in 28 years at a mere 12 million tons. In contrast, abundant supplies of Kazak wheat will be in greater demand by North African and Middle Eastern millers.

Canadian Exports



2002/2003 Trade Changes

Selected Exporters

- **Australia** down 1.5 million tons to 15.5 million due to lower expected production resulting from dry growing conditions.
- **Canada** down 3 million tons to 12 million based on a significantly smaller expected crop.
- **EU** exports up 1.5 million to 15 million due to reduced supplies in major competing exporters and sharply higher price prospects.
- **India** up 500,000 tons to 4.5 million based on less export competition in Southeast Asia and the Middle East.
- **Kazakstan** up 500,000 tons to 5 million based on improved export prospects resulting from an expected tighter global supply of quality milling wheat.
- **Ukraine** up 500,000 tons to 4 million tons because of improved price competitiveness.

Selected Importers

- **Brazil** down 500,000 tons to 6.5 million due to a larger expected crop.
- **South Korea** down 400,000 tons to 3.8 million due to large carryin stocks necessitating fewer milling wheat imports.
- **Tunisia** down 200,000 tons to 1.8 million due to a lower level of consumption based on 2001/02 imports.
- **Uzbekistan** down 300,000 tons to 300,000 based on a larger expected crop.

2001/2002 Trade Changes

Selected Exporters

- **Argentina** up 600,000 tons to 11.6 million due to a strong shipment pace late in the marketing year.
- **Canada** up 300,000 tons to 16.8 million tons based on exports to date.
- **Kazakstan** down 220,000 tons to 3.8 million based on final export data.

-
- **Russia** up 200,000 tons to 3.7 million because of large late season shipments to North Africa and the EU.
 - **Ukraine** down 500,000 tons to 5.5 million based on much smaller than expected shipments in the final months of the marketing year.
 - **United States** down 300,000 tons to 26.2 million due to a slowdown in late season shipments.
 - **Selected Importers**
 - **Israel** down 300,000 tons to 1.5 million due to the slow pace of imports.
 - **Morocco** up 200,000 tons to 3 million due to expanded imports from Ukraine and Russia.
 - **South Korea** down 120,000 tons based on final import figures showing lower than expected imports of feed quality wheat.
 - **Tunisia** down 200,000 tons to 1.4 million because of a slow import pace.

WORLD WHEAT, FLOUR, AND PRODUCTS TRADE
JULY/JUNE YEAR
THOUSAND METRIC TONS

	1998/99	1999/00	2000/01	2001/02 11-Jul	2001/02 12-Aug	2002/03 11-Jul	2002/03 12-Aug
EXPORTS							
Argentina	9,199	11,083	11,396	11,000	11,600	9,000	9,000
Australia	16,104	17,124	16,682	16,500	16,500	17,000	15,500
Canada	14,394	19,373	17,351	16,500	16,800	15,000	12,000
India	0	200	2,357	3,000	3,000	4,000	4,500
Kazakstan	2,295	6,514	3,668	4,000	3,780	4,500	5,000
Russia	1,652	518	696	3,500	3,700	2,500	2,500
Turkey	2,803	1,984	1,601	500	500	1,500	1,500
Ukraine	4,696	1,952	78	6,000	5,500	3,500	4,000
EU	14,589	17,432	15,225	10,000	10,000	13,500	15,000
Eastern Europe	4,130	3,384	2,316	4,150	4,150	2,920	2,920
Others	3,133	3,763	4,265	5,880	5,892	6,010	5,960
Subtotal	72,995	83,327	75,635	81,030	81,422	79,430	77,880
United States	29,028	29,449	27,845	26,500	26,200	24,500	24,500
WORLD TOTAL	102,023	112,776	103,480	107,530	107,622	103,930	102,380
IMPORTS							
Algeria	4,250	4,750	5,600	4,000	4,000	4,000	4,000
Bangladesh	2,032	1,624	1,293	1,100	1,100	1,200	1,200
Bolivia	480	458	485	500	500	500	500
Brazil	7,422	7,340	7,518	6,700	6,700	6,500	6,000
Chile	722	732	438	450	450	500	500
China	829	1,010	195	1,300	1,300	2,000	2,000
Colombia	1,108	1,135	1,164	1,200	1,200	1,300	1,300
Cuba	977	1,119	963	1,100	1,100	1,100	1,100
Ecuador	410	485	490	450	450	500	500
Egypt	7,454	5,872	6,050	6,500	6,500	6,000	6,000
Ethiopia	466	1,082	888	400	400	600	600
India	1,294	1,311	60	100	100	100	100
Indonesia	3,117	3,744	4,069	4,000	4,000	4,000	4,000
Iran	2,585	7,363	6,245	6,000	6,000	5,000	4,500
Iraq	2,028	2,650	3,300	3,000	3,000	3,000	3,000
Israel	1,517	1,611	1,250	1,800	1,500	1,600	1,500
Japan	5,959	5,960	5,885	5,800	5,836	5,800	5,800
Jordan	344	741	650	700	800	700	800
Kenya	423	683	806	600	600	850	850
Korea, North	703	334	300	500	500	400	400
Korea, South	4,689	3,811	3,127	4,100	3,979	4,200	3,800
Libya	1,236	1,582	1,400	1,400	1,400	1,400	1,400
Malaysia	1,263	1,278	1,265	1,300	1,300	1,350	1,350
Mexico	2,485	2,632	3,066	3,200	3,200	3,300	3,300
Morocco	2,795	3,094	3,632	2,800	3,000	2,800	2,800
Nigeria	1,466	1,282	1,913	2,300	2,300	2,700	2,700
Pakistan	3,130	1,766	50	350	350	500	500
Peru	1,346	1,215	1,451	1,500	1,500	1,500	1,500
Philippines	2,328	2,982	3,050	3,300	3,300	3,500	3,500
Russia	2,490	5,083	1,604	500	500	1,000	1,000
South Africa	567	806	550	500	500	500	500
Sri Lanka	867	834	779	850	850	850	850
Sudan	615	792	920	900	900	900	900
Taiwan	1,011	1,138	1,033	1,000	1,000	1,000	1,000
Thailand	830	809	941	900	900	950	950
Tunisia	1,084	1,186	1,595	1,600	1,400	2,000	1,800
Turkey	1,862	1,462	446	1,000	1,000	500	500
UAE	788	1,386	1,100	1,100	1,100	1,300	1,300
Uzbekistan	380	550	550	800	800	600	300
Venezuela	1,300	1,386	1,394	1,400	1,400	1,400	1,400
Vietnam	604	550	650	900	900	1,000	1,000
Yemen	2,066	2,002	2,117	1,800	1,800	2,000	2,000
EU	3,761	4,176	3,159	9,000	9,000	3,500	3,500
O.W. Europe	576	730	523	610	610	560	560
Eastern Europe	2,060	1,620	2,882	1,670	1,670	1,920	1,970
United States	2,842	2,503	2,417	2,800	2,850	2,800	2,800
Subtotal	88,561	96,659	89,263	93,780	93,545	89,680	87,830
Other Countries	11,102	13,219	12,436	12,828	13,278	12,933	13,083
Unaccounted	2,360	2,898	1,781	922	799	1,317	1,467
WORLD TOTAL	102,023	112,776	103,480	107,530	107,622	103,930	102,380

**WORLD WHEAT PRODUCTION, CONSUMPTION AND STOCKS
LOCAL MARKETING YEARS**

	1998/99	1999/00	2000/01	2001/02 11-Jul	2001/02 12-Aug	2002/03 11-Jul	2002/03 12-Aug
PRODUCTION							
Algeria	2,200	1,470	760	2,010	2,010	2,000	2,000
Argentina	13,300	16,400	16,230	15,500	15,500	14,000	14,000
Australia	21,465	24,757	23,766	24,000	24,000	23,000	20,000
Brazil	2,188	2,403	1,660	3,250	3,250	3,300	3,700
Canada	24,076	26,900	26,804	21,300	21,300	23,000	18,000
China	109,726	113,880	99,640	93,870	93,870	92,000	92,000
India	66,350	70,780	76,369	68,763	68,763	72,000	72,000
Iran	12,000	8,500	7,500	7,500	7,500	9,500	9,500
Kazakstan	4,700	11,200	9,100	12,700	12,700	11,000	12,000
Mexico	3,235	3,050	3,400	3,270	3,270	3,150	3,150
Morocco	4,378	2,154	1,381	3,316	3,316	3,300	3,300
Pakistan	18,694	17,854	21,079	19,023	19,023	19,500	19,500
Russia	27,000	31,000	34,450	46,900	46,900	41,000	41,000
Tunisia	1,353	1,393	1,320	1,000	1,000	600	600
Turkey	18,000	16,500	18,000	15,500	15,500	18,500	18,500
Ukraine	14,937	13,585	10,197	21,300	21,300	17,500	17,500
EU	103,085	96,392	104,784	91,725	91,725	108,610	107,660
Eastern Europe	33,928	28,195	28,680	35,243	35,243	30,560	30,460
Others	39,718	37,201	38,002	40,128	40,128	40,605	41,505
Subtotal	520,333	523,614	523,122	526,298	526,298	533,125	526,375
United States	69,327	62,569	60,758	53,278	53,278	47,592	45,894
WORLD TOTAL	589,660	586,183	583,880	579,576	579,576	580,717	572,269
CONSUMPTION							
Algeria	6,150	6,100	6,150	6,100	6,100	6,100	6,100
Australia	4,530	5,227	6,894	7,000	7,000	6,630	6,630
Brazil	8,960	9,532	9,499	9,750	9,750	9,800	9,800
Canada	8,077	7,621	7,908	8,068	8,068	8,250	8,650
China	112,001	113,125	114,097	112,600	112,600	110,000	110,000
Egypt	12,958	12,750	12,486	12,400	12,400	12,300	12,300
India	63,707	68,793	66,440	60,363	60,363	63,100	63,100
Iran	15,400	15,700	15,200	15,000	15,000	15,000	14,500
Japan	6,112	5,909	5,824	6,070	6,006	6,090	6,090
Morocco	5,628	5,878	5,965	6,000	6,000	6,100	6,100
Pakistan	21,284	20,452	20,500	19,800	19,800	19,750	19,750
Russia	34,838	35,365	35,158	38,000	38,000	39,000	39,000
Turkey	16,886	16,777	16,700	16,617	16,617	17,100	17,100
Ukraine	12,419	12,186	12,155	12,655	12,655	13,100	13,100
EU	88,135	87,154	91,983	91,933	91,933	94,597	94,597
Eastern Europe	31,898	29,631	28,985	31,179	31,179	30,355	30,305
Others	96,295	101,452	98,379	101,209	100,542	104,186	105,186
Subtotal	545,278	553,652	554,323	554,744	554,013	561,458	562,308
United States	37,579	35,407	36,301	32,847	32,880	32,823	32,551
WORLD TOTAL	582,857	589,059	590,624	587,591	586,893	594,281	594,859
ENDING STOCKS							
Australia	1,868	3,613	4,629	5,179	5,179	4,599	3,099
Canada	7,435	7,739	9,518	6,550	6,550	6,500	4,100
China	70,135	71,358	56,473	37,543	37,531	20,543	20,531
India	9,921	13,080	21,500	27,000	27,000	32,000	31,500
Russia	1,000	1,200	1,400	7,300	7,100	7,800	7,600
Ukraine	1,900	1,800	450	3,195	3,695	4,195	4,195
EU	16,667	12,649	13,384	12,176	12,176	16,189	13,739
Others	43,606	38,113	37,456	40,690	41,100	41,110	41,270
Subtotal	152,532	149,552	144,810	139,633	140,331	132,936	126,034
United States	25,744	25,848	23,846	21,008	21,008	14,141	12,715
WORLD TOTAL	178,276	175,400	168,656	160,641	161,339	147,077	138,749

REGIONAL WHEAT IMPORTS, PRODUCTION, CONSUMPTION AND STOCKS
THOUSAND METRIC TONS

	1998/99	1999/00	2000/01	2001/02 11-Jul	2001/02 12-Aug	2002/03 11-Jul	2002/03 12-Aug
IMPORTS							
North America 1/	5,479	5,325	5,682	6,300	6,350	6,300	6,300
Latin America 2/	<u>16,089</u>	<u>16,252</u>	<u>16,316</u>	<u>15,830</u>	<u>15,830</u>	<u>15,805</u>	<u>15,305</u>
EU	3,761	4,176	3,159	9,000	9,000	3,500	3,500
Other Wst. Eur. 3/	<u>576</u>	<u>730</u>	<u>523</u>	<u>610</u>	<u>610</u>	<u>560</u>	<u>560</u>
Former USSR	5,457	9,804	5,116	3,940	4,140	4,405	4,205
Eastern Europe 4/	<u>2,060</u>	<u>1,620</u>	<u>2,882</u>	<u>1,670</u>	<u>1,670</u>	<u>1,920</u>	<u>1,970</u>
Middle East 5/	12,223	18,433	16,068	16,435	16,435	15,150	14,650
North Africa 6/	<u>16,819</u>	<u>16,484</u>	<u>18,277</u>	<u>16,300</u>	<u>16,300</u>	<u>16,200</u>	<u>16,000</u>
Other Africa 7/	6,890	7,780	8,794	8,283	8,333	9,233	9,283
South Asia 8/	<u>7,390</u>	<u>5,889</u>	<u>2,766</u>	<u>3,410</u>	<u>3,410</u>	<u>3,660</u>	<u>3,660</u>
Other Asia 9/	22,476	22,854	21,569	24,250	24,165	25,350	24,950
Oceania 10/	<u>443</u>	<u>531</u>	<u>547</u>	<u>580</u>	<u>580</u>	<u>530</u>	<u>530</u>
PRODUCTION							
North America 1/	96,638	92,519	90,962	77,848	77,848	73,742	67,044
Latin America 2/	<u>17,834</u>	<u>21,195</u>	<u>20,494</u>	<u>21,107</u>	<u>21,107</u>	<u>19,919</u>	<u>20,319</u>
EU	103,085	96,392	104,784	91,725	91,725	108,610	107,660
Other Wst. Eur. 3/	<u>963</u>	<u>901</u>	<u>905</u>	<u>905</u>	<u>905</u>	<u>905</u>	<u>905</u>
Former USSR	57,561	66,060	64,754	92,867	92,867	81,980	83,880
Eastern Europe 4/	<u>33,928</u>	<u>28,195</u>	<u>28,680</u>	<u>35,243</u>	<u>35,243</u>	<u>30,560</u>	<u>30,460</u>
Middle East 5/	37,577	30,437	31,079	30,525	30,525	35,275	35,275
North Africa 6/	<u>14,195</u>	<u>11,527</u>	<u>9,936</u>	<u>12,681</u>	<u>12,681</u>	<u>12,275</u>	<u>12,275</u>
Other Africa 7/	4,727	4,734	5,855	5,871	5,871	5,583	5,583
South Asia 8/	<u>90,731</u>	<u>94,172</u>	<u>101,660</u>	<u>91,606</u>	<u>91,606</u>	<u>95,420</u>	<u>95,420</u>
Other Asia 9/	110,681	115,019	100,730	94,923	94,923	93,173	93,173
Oceania 10/	<u>21,740</u>	<u>25,032</u>	<u>24,041</u>	<u>24,275</u>	<u>24,275</u>	<u>23,275</u>	<u>20,275</u>
CONSUMPTION							
North America 1/	51,065	49,789	49,789	46,785	46,818	46,973	47,101
Latin America 2/	<u>24,532</u>	<u>25,533</u>	<u>25,626</u>	<u>25,884</u>	<u>25,884</u>	<u>26,062</u>	<u>26,062</u>
EU	88,135	87,154	91,983	91,933	91,933	94,597	94,597
Other Wst. Eur. 3/	<u>1,539</u>	<u>1,631</u>	<u>1,438</u>	<u>1,515</u>	<u>1,515</u>	<u>1,465</u>	<u>1,465</u>
Former USSR	65,589	66,598	65,368	70,067	70,537	72,565	73,665
Eastern Europe 4/	<u>31,898</u>	<u>29,631</u>	<u>28,985</u>	<u>31,179</u>	<u>31,179</u>	<u>30,355</u>	<u>30,305</u>
Middle East 5/	46,689	47,325	46,626	46,662	46,502	47,335	46,885
North Africa 6/	<u>28,392</u>	<u>28,970</u>	<u>28,626</u>	<u>28,575</u>	<u>28,525</u>	<u>28,525</u>	<u>28,425</u>
Other Africa 7/	11,601	12,610	14,335	13,839	13,889	14,691	14,741
South Asia 8/	<u>93,648</u>	<u>97,395</u>	<u>93,708</u>	<u>87,093</u>	<u>87,093</u>	<u>88,830</u>	<u>88,830</u>
Other Asia 9/	133,159	134,166	135,221	136,023	135,688	133,955	133,705
Oceania 10/	<u>5,177</u>	<u>5,965</u>	<u>7,627</u>	<u>7,745</u>	<u>7,745</u>	<u>7,375</u>	<u>7,375</u>
ENDING STOCKS							
North America 1/	33,879	34,187	34,145	28,439	28,439	21,572	17,746
Latin America 2/	<u>2,500</u>	<u>2,895</u>	<u>2,349</u>	<u>2,417</u>	<u>2,417</u>	<u>2,594</u>	<u>2,494</u>
EU	16,667	12,649	13,384	12,176	12,176	16,189	13,739
Other Wst. Eur. 3/	<u>475</u>	<u>475</u>	<u>475</u>	<u>475</u>	<u>475</u>	<u>475</u>	<u>475</u>
Former USSR	6,512	6,362	6,079	18,999	19,249	21,999	21,849
Eastern Europe 4/	<u>7,671</u>	<u>4,454</u>	<u>4,695</u>	<u>6,259</u>	<u>6,259</u>	<u>5,464</u>	<u>5,464</u>
Middle East 5/	12,522	11,088	9,517	8,465	8,625	8,505	8,615
North Africa 6/	<u>6,941</u>	<u>5,812</u>	<u>5,099</u>	<u>5,255</u>	<u>5,305</u>	<u>4,955</u>	<u>4,955</u>
Other Africa 7/	1,310	1,060	1,109	1,149	1,149	999	999
South Asia 8/	<u>14,071</u>	<u>16,932</u>	<u>25,828</u>	<u>29,751</u>	<u>29,751</u>	<u>35,001</u>	<u>34,501</u>
Other Asia 9/	73,760	75,773	61,247	41,927	42,165	24,575	24,663
Oceania 10/	<u>1,968</u>	<u>3,713</u>	<u>4,729</u>	<u>5,329</u>	<u>5,329</u>	<u>4,749</u>	<u>3,249</u>

NOTES: Footnotes appear on last page of this circular. Imports are reported on an international year basis. All other data are reported using marketing years.

WORLD RICE SITUATION AND OUTLOOK

Global production in 2002/03 is projected at 384.4 million tons (milled basis), down 10 million tons from last month and 12.3 million tons below the revised 2001/02 estimate. A decrease in India's production accounts for virtually all of the 2002/03 revision. Global ending stocks and consumption continue to move in opposite directions with ending stocks estimated down 24.4 million tons at 113.4 and consumption up 4.9 million tons at 408.7 from revised 2001/02.

Despite Thailand's attempts to firm prices through government intervention purchases, continued competition with India's low-priced exports and weakening of the baht caused price quotes to soften. Since last month, Thai 100B dropped \$13 to \$195 per ton, while Viet prices remain virtually flat with continued harvesting of the summer-autumn crop at \$189 per ton.

Domestic export price quotes moved sideways this month for both U.S. long grain grade #2/4 and medium grain #1/4 California, with quotes unchanged at \$210 (FAS) per ton and \$255 per ton (ex-spout Sacramento), respectively.

Trade Changes in 2003

Selected Exporters

- **Australia** exports down 200,000 tons to 500,000 based on the expectation of strong competition in the medium/short grain markets.
- **Pakistan** down 200,000 tons to 800,000 based on a smaller crop projection and shrinking exportable supplies.
- **India** down 500,000 tons to 4 million resulting from reduced 2002/03 crop projection and smaller exportable supplies.
- **China** and **Vietnam** up 250,000 tons to 2.25 million and 3.5 million, respectively, based on weaker projected exports from India.

Trade Changes in 2002

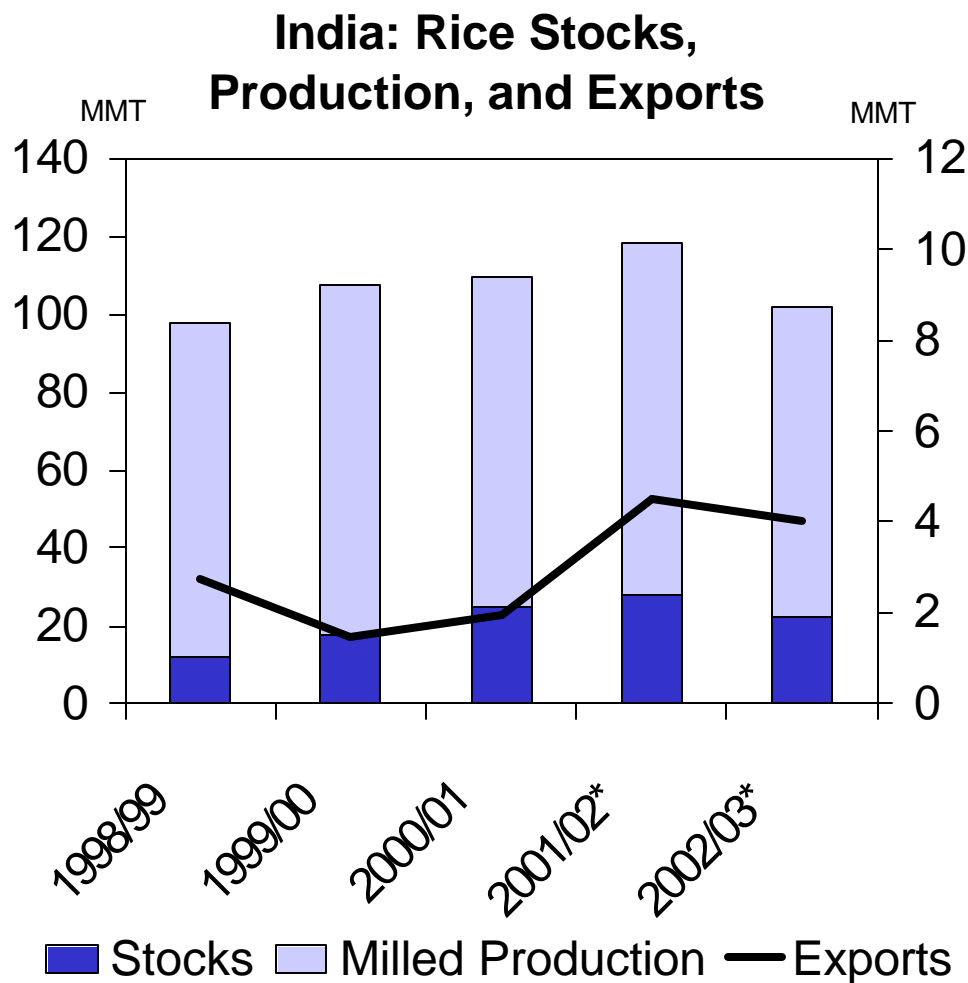
Selected Exporters

- **Australia** exports down 100,000 tons to 400,000 based on pace to date.

Selected Importers

- **Bangladesh** imports down 100,000 tons to 300,000 based on the pace to date.
- **China** down 75,000 tons to 200,000 tons based on the pace to date.

- **North Korea** down 150,000 tons to 150,000 due to smaller than anticipated food aid donations.
- **Philippines** up 600,000 tons to 1.2 million based on increased purchases by state trading agencies and recent food aid donations from the United States.
- **Saudi Arabia** down 100,000 tons to 900,000 based on the pace to date.
- **Yemen** down 15,000 tons to 200,000 based on the pace to date.



*** Projected**

A significant drop in projected 2002/03 rice production may allow the government of India to draw-down stocks to a manageable level. Any further reductions in rice supplies could limit exports and move India out of the number-two exporter slot.

WORLD RICE TRADE
CALENDAR YEAR
THOUSAND METRIC TONS

	1999	2000	2001	2002 11-Jul	2002 12-Aug	2003 11-Jul	2003 12-Aug
EXPORTS							
Argentina	674	332	363	350	350	300	300
Australia	667	617	618	500	400	700	500
Burma	57	159	670	1,500	1,500	1,500	1,500
China	2,708	2,951	1,847	1,500	1,500	2,000	2,250
Egypt	320	500	705	500	500	500	500
Guyana	252	167	175	150	150	175	175
India	2,752	1,449	1,936	4,500	4,500	4,500	4,000
Pakistan	1,838	2,026	2,417	1,250	1,250	1,000	800
Thailand	6,679	6,549	7,521	7,500	7,500	7,500	7,500
Uruguay	681	642	806	650	650	650	650
Vietnam	4,555	3,370	3,528	2,800	2,800	3,250	3,500
EU	348	308	275	275	275	325	325
Others	766	929	1,051	624	624	614	614
Subtotal	22,297	19,999	21,912	22,099	21,999	23,014	22,614
United States	2,644	2,847	2,541	2,950	2,950	2,900	2,950
<u>WORLD TOTAL</u>	<u>24,941</u>	<u>22,846</u>	<u>24,453</u>	<u>25,049</u>	<u>24,949</u>	<u>25,914</u>	<u>25,564</u>
IMPORTS							
Bangladesh	1,220	638	402	400	300	500	500
Brazil	781	700	673	600	600	400	400
Canada	248	250	262	265	265	270	270
China	178	278	267	275	200	400	400
Colombia	38	60	163	75	75	100	100
Costa Rica	56	48	41	65	65	70	70
Cote d'Ivoire	600	450	654	575	575	600	600
Cuba	431	415	481	455	455	475	475
El Salvador	28	30	76	75	75	75	75
Ghana	125	186	211	210	210	225	225
Guinea	300	275	325	275	275	300	300
Haiti	235	245	250	260	260	265	265
Honduras	75	80	96	75	75	80	80
Indonesia	3,729	1,500	1,500	3,250	3,250	3,250	3,250
Iran	1,313	1,100	735	1,250	1,250	1,500	1,500
Iraq	779	1,274	959	1,000	1,000	1,100	1,100
Jamaica & Dep	71	75	75	75	75	75	75
Japan	633	656	680	650	650	650	650
Korea, North	159	400	537	300	150	450	450
Korea, South	137	151	99	150	150	150	150
Malaysia	617	596	633	600	600	600	600
Mexico	342	415	388	500	500	500	500
Nigeria	950	1,250	1,738	1,500	1,500	1,500	1,500
Nicaragua	88	60	117	100	100	100	100
Peru	116	86	62	55	55	60	60
Philippines	1,000	900	1,175	650	1,200	650	650
Russia	580	400	247	275	275	350	350
Saudi Arabia	750	992	1,053	1,000	900	1,000	1,000
Senegal	700	502	863	900	900	750	750
Singapore	421	354	444	325	325	325	325
South Africa	514	523	572	550	550	550	550
Sri Lanka	205	18	35	80	80	100	100
Syria	200	150	172	180	180	180	180
Taiwan	5	3	23	125	125	130	130
Turkey	321	309	231	250	250	325	325
Uzbekistan	40	30	142	175	175	175	175
UAE	75	75	75	80	80	80	80
Yemen	217	210	202	215	200	250	250
EU	784	852	800	800	800	850	850
O.W. Europe	50	50	55	50	50	50	50
Eastern Europe	361	343	381	357	357	358	358
United States	358	308	413	420	420	430	430
Subtotal	19,830	17,237	18,307	19,467	19,577	20,248	20,248
Other Countries	3,458	3,841	4,175	4,195	4,245	4,130	4,130
Unaccounted	1,653	1,768	1,971	1,387	1,127	1,536	1,186
<u>WORLD TOTAL</u>	<u>24,941</u>	<u>22,846</u>	<u>24,453</u>	<u>25,049</u>	<u>24,949</u>	<u>25,914</u>	<u>25,564</u>

WORLD RICE PRODUCTION, CONSUMPTION AND STOCKS
LOCAL MARKETING YEARS
THOUSAND METRIC TONS

	1998/99	1999/00	2000/01	2001/02 11-Jul	2001/02 12-Aug	2002/03 11-Jul	2002/03 12-Aug
MILLED PRODUCTION							
Australia	974	787	1,259	930	930	965	965
<u>Bangladesh</u>	<u>19,854</u>	<u>23,066</u>	<u>25,086</u>	<u>25,500</u>	<u>25,500</u>	<u>26,000</u>	<u>26,000</u>
Brazil	7,876	7,768	7,062	7,480	7,480	7,600	7,600
<u>Burma</u>	<u>9,280</u>	<u>9,860</u>	<u>10,771</u>	<u>10,440</u>	<u>10,440</u>	<u>10,440</u>	<u>10,440</u>
China	139,100	138,936	131,536	124,320	124,320	123,200	123,200
<u>Egypt</u>	<u>2,645</u>	<u>3,787</u>	<u>3,965</u>	<u>3,575</u>	<u>3,575</u>	<u>3,800</u>	<u>3,800</u>
India	86,000	89,700	84,871	90,000	91,600	90,000	80,000
<u>Indonesia</u>	<u>31,853</u>	<u>33,445</u>	<u>32,548</u>	<u>32,422</u>	<u>32,422</u>	<u>32,500</u>	<u>32,500</u>
Japan	8,154	8,350	8,636	8,242	8,242	8,200	8,200
<u>Korea, South</u>	<u>5,100</u>	<u>5,263</u>	<u>5,291</u>	<u>5,515</u>	<u>5,515</u>	<u>5,400</u>	<u>5,300</u>
Pakistan	4,674	5,156	4,700	3,740	3,740	3,700	3,500
<u>Philippines</u>	<u>6,674</u>	<u>7,772</u>	<u>8,135</u>	<u>8,622</u>	<u>8,450</u>	<u>8,500</u>	<u>8,300</u>
Taiwan	1,311	1,349	1,342	1,245	1,245	1,197	1,197
<u>Thailand</u>	<u>15,589</u>	<u>16,500</u>	<u>16,901</u>	<u>16,500</u>	<u>16,500</u>	<u>16,500</u>	<u>16,500</u>
Vietnam	20,108	20,926	20,473	20,670	20,670	20,500	20,500
EU	1,749	1,751	1,567	1,620	1,620	1,792	1,792
Others	27,317	28,282	27,270	27,380	27,575	27,767	28,156
Subtotal	388,258	402,698	391,413	388,201	389,824	388,061	377,950
United States	5,798	6,502	5,941	6,764	6,764	6,385	6,457
<u>WORLD TOTAL</u>	<u>394,056</u>	<u>409,200</u>	<u>397,354</u>	<u>394,965</u>	<u>396,588</u>	<u>394,446</u>	<u>384,407</u>
CONSUMPTION							
Bangladesh	21,854	23,766	25,790	26,250	26,250	26,250	26,250
<u>Brazil</u>	<u>7,955</u>	<u>7,956</u>	<u>7,956</u>	<u>7,958</u>	<u>7,958</u>	<u>8,000</u>	<u>8,000</u>
Burma	9,276	9,330	9,350	9,400	9,400	9,475	9,475
<u>China</u>	<u>133,570</u>	<u>133,763</u>	<u>134,356</u>	<u>134,695</u>	<u>134,595</u>	<u>135,100</u>	<u>134,800</u>
Egypt	2,771	2,856	3,015	3,150	3,150	3,275	3,275
<u>India</u>	<u>81,154</u>	<u>82,670</u>	<u>75,851</u>	<u>85,000</u>	<u>82,251</u>	<u>85,000</u>	<u>84,000</u>
Indonesia	35,033	35,400	35,877	36,358	36,358	36,790	36,790
<u>Iran</u>	<u>2,913</u>	<u>3,019</u>	<u>3,050</u>	<u>2,800</u>	<u>3,075</u>	<u>2,600</u>	<u>3,100</u>
Japan	9,100	9,450	9,000	9,000	9,000	9,000	9,000
<u>Korea, North</u>	<u>1,559</u>	<u>2,000</u>	<u>1,837</u>	<u>1,650</u>	<u>1,500</u>	<u>1,840</u>	<u>1,950</u>
Korea, South	5,021	4,986	5,000	5,200	5,100	5,200	5,100
<u>Philippines</u>	<u>8,000</u>	<u>8,400</u>	<u>8,750</u>	<u>8,900</u>	<u>8,900</u>	<u>9,105</u>	<u>9,105</u>
South Africa	543	531	525	550	550	600	600
<u>Taiwan</u>	<u>1,325</u>	<u>1,315</u>	<u>1,265</u>	<u>1,150</u>	<u>1,150</u>	<u>1,150</u>	<u>1,150</u>
Thailand	8,900	9,300	9,400	9,500	9,500	9,600	9,600
<u>Vietnam</u>	<u>15,763</u>	<u>16,771</u>	<u>17,275</u>	<u>17,400</u>	<u>17,400</u>	<u>17,700</u>	<u>17,700</u>
EU	2,113	2,190	2,207	2,215	2,215	2,190	2,190
Others	36,853	40,788	42,168	42,233	41,696	42,933	42,607
Subtotal	383,703	394,491	392,672	403,409	400,048	405,808	404,692
United States	3,587	3,846	3,676	3,888	3,889	3,973	3,969
<u>WORLD TOTAL</u>	<u>387,290</u>	<u>398,337</u>	<u>396,348</u>	<u>407,297</u>	<u>403,937</u>	<u>409,781</u>	<u>408,661</u>
ENDING STOCKS							
Brazil	1,157	1,513	1,327	1,449	1,449	1,549	1,549
<u>Burma</u>	<u>203</u>	<u>574</u>	<u>1,325</u>	<u>865</u>	<u>865</u>	<u>330</u>	<u>330</u>
China	96,000	98,500	94,100	82,500	82,525	69,000	69,075
<u>India</u>	<u>12,000</u>	<u>17,716</u>	<u>25,051</u>	<u>17,871</u>	<u>30,000</u>	<u>18,371</u>	<u>22,100</u>
Indonesia	6,828	6,373	4,544	3,858	3,858	2,818	2,818
<u>Korea, South</u>	<u>980</u>	<u>1,355</u>	<u>1,739</u>	<u>1,899</u>	<u>2,299</u>	<u>2,244</u>	<u>2,644</u>
Pakistan	359	811	432	222	222	222	222
<u>Philippines</u>	<u>1,965</u>	<u>2,002</u>	<u>2,797</u>	<u>3,069</u>	<u>3,447</u>	<u>3,039</u>	<u>3,217</u>
Thailand	1,060	1,711	1,691	1,191	1,191	591	591
<u>Vietnam</u>	<u>350</u>	<u>1,175</u>	<u>885</u>	<u>1,395</u>	<u>1,395</u>	<u>985</u>	<u>735</u>
Others	12,044	12,731	11,266	10,301	10,787	9,764	9,805
Subtotal	132,596	143,286	144,272	123,225	136,643	107,928	112,351
United States	694	867	887	1,136	1,167	1,098	1,205
<u>WORLD TOTAL</u>	<u>133,290</u>	<u>144,153</u>	<u>145,159</u>	<u>124,361</u>	<u>137,810</u>	<u>109,026</u>	<u>113,556</u>

NOTES: All data are reported on a milled basis.

REGIONAL RICE IMPORTS, PRODUCTION, CONSUMPTION AND STOCKS
THOUSAND METRIC TONS

	1999	2000	2001	2002 11-Jul	2002 12-Aug	2003 11-Jul	2003 12-Aug
IMPORTS							
North America 1/	948	973	1,063	1,185	1,185	1,200	1,200
Latin America 2/	<u>2,263</u>	<u>2,103</u>	<u>2,348</u>	<u>2,130</u>	<u>2,130</u>	<u>2,005</u>	<u>2,005</u>
EU	784	852	800	800	800	850	850
Other West. Eur. 3/	<u>50</u>	<u>50</u>	<u>55</u>	<u>50</u>	<u>50</u>	<u>50</u>	<u>50</u>
Former USSR	712	507	479	583	583	658	658
Eastern Europe 4/	<u>361</u>	<u>343</u>	<u>381</u>	<u>357</u>	<u>357</u>	<u>358</u>	<u>358</u>
Middle East 5/	4,024	4,469	3,826	4,405	4,290	4,865	4,865
North Africa 6/	<u>218</u>	<u>162</u>	<u>201</u>	<u>275</u>	<u>275</u>	<u>275</u>	<u>275</u>
Other Africa 7/	4,706	5,034	6,414	5,897	5,947	5,747	5,747
South Asia 8/	<u>1,552</u>	<u>978</u>	<u>717</u>	<u>795</u>	<u>695</u>	<u>890</u>	<u>890</u>
Other Asia 9/	7,344	5,236	5,783	6,785	7,110	7,080	7,080
Oceania 10/	<u>326</u>	<u>371</u>	<u>415</u>	<u>400</u>	<u>400</u>	<u>400</u>	<u>400</u>
PRODUCTION							
North America 1/	6,111	6,771	6,156	6,949	6,949	6,580	6,652
Latin America 2/	<u>14,701</u>	<u>14,739</u>	<u>13,738</u>	<u>14,138</u>	<u>14,146</u>	<u>14,356</u>	<u>14,406</u>
EU	1,749	1,751	1,567	1,749	1,620	1,792	1,792
Other West. Eur. 3/	<u>0</u>	<u>0</u>	<u>0</u>	<u>0</u>	<u>0</u>	<u>0</u>	<u>0</u>
Former USSR	730	789	740	641	641	724	724
Eastern Europe 4/	<u>33</u>	<u>35</u>	<u>35</u>	<u>35</u>	<u>35</u>	<u>35</u>	<u>35</u>
Middle East 5/	2,240	1,905	1,632	1,411	1,598	1,463	1,692
North Africa 6/	<u>2,686</u>	<u>3,828</u>	<u>4,006</u>	<u>3,616</u>	<u>3,616</u>	<u>3,841</u>	<u>3,841</u>
Other Africa 7/	6,728	6,974	6,850	7,162	7,162	7,113	7,113
South Asia 8/	<u>115,076</u>	<u>122,521</u>	<u>119,168</u>	<u>123,660</u>	<u>125,260</u>	<u>124,200</u>	<u>114,000</u>
Other Asia 9/	243,028	249,100	242,203	234,803	234,631	233,377	233,187
Oceania 10/	<u>974</u>	<u>787</u>	<u>1,259</u>	<u>930</u>	<u>930</u>	<u>965</u>	<u>965</u>
CONSUMPTION							
North America 1/	4,439	4,717	4,588	4,828	4,829	4,943	4,939
Latin America 2/	<u>14,221</u>	<u>14,654</u>	<u>14,829</u>	<u>14,992</u>	<u>14,992</u>	<u>15,107</u>	<u>15,107</u>
EU	2,113	2,190	2,207	2,215	2,215	2,190	2,190
Other West. Eur. 3/	<u>50</u>	<u>53</u>	<u>55</u>	<u>53</u>	<u>53</u>	<u>53</u>	<u>53</u>
Former USSR	1,150	1,222	1,231	1,346	1,291	1,375	1,399
Eastern Europe 4/	<u>402</u>	<u>380</u>	<u>427</u>	<u>374</u>	<u>374</u>	<u>392</u>	<u>392</u>
Middle East 5/	6,008	6,260	6,531	6,516	6,726	6,391	6,841
North Africa 6/	<u>2,984</u>	<u>3,059</u>	<u>3,246</u>	<u>3,416</u>	<u>3,416</u>	<u>3,541</u>	<u>3,541</u>
Other Africa 7/	10,958	11,570	12,046	12,962	13,012	13,322	13,322
South Asia 8/	<u>110,382</u>	<u>113,836</u>	<u>109,118</u>	<u>118,850</u>	<u>116,101</u>	<u>118,885</u>	<u>117,885</u>
Other Asia 9/	233,376	237,068	238,735	239,995	239,645	241,790	241,500
Oceania 10/	<u>608</u>	<u>670</u>	<u>706</u>	<u>723</u>	<u>723</u>	<u>730</u>	<u>730</u>
ENDING STOCKS							
North America 1/	814	1,062	1,046	1,277	1,308	1,206	1,313
Latin America 2/	<u>2,420</u>	<u>2,900</u>	<u>2,504</u>	<u>2,639</u>	<u>2,647</u>	<u>2,763</u>	<u>2,821</u>
EU	821	888	879	859	859	1,036	1,036
Other West. Eur. 3/	<u>16</u>	<u>13</u>	<u>8</u>	<u>10</u>	<u>10</u>	<u>7</u>	<u>7</u>
Former USSR	289	328	296	98	209	75	162
Eastern Europe 4/	<u>0</u>	<u>0</u>	<u>0</u>	<u>0</u>	<u>0</u>	<u>0</u>	<u>0</u>
Middle East 5/	3,095	2,967	1,763	648	1,040	490	561
North Africa 6/	<u>200</u>	<u>631</u>	<u>887</u>	<u>862</u>	<u>862</u>	<u>937</u>	<u>937</u>
Other Africa 7/	1,345	1,682	1,629	2,091	2,091	1,833	1,833
South Asia 8/	<u>13,532</u>	<u>19,527</u>	<u>26,389</u>	<u>18,534</u>	<u>30,563</u>	<u>19,194</u>	<u>22,823</u>
Other Asia 9/	110,551	114,070	109,315	96,868	97,671	81,000	80,668
Oceania 10/	<u>207</u>	<u>85</u>	<u>443</u>	<u>475</u>	<u>550</u>	<u>485</u>	<u>660</u>

NOTES: Footnotes appear on last page of this circular. All data are reported on a milled basis.

WORLD COARSE GRAINS SITUATION AND OUTLOOK

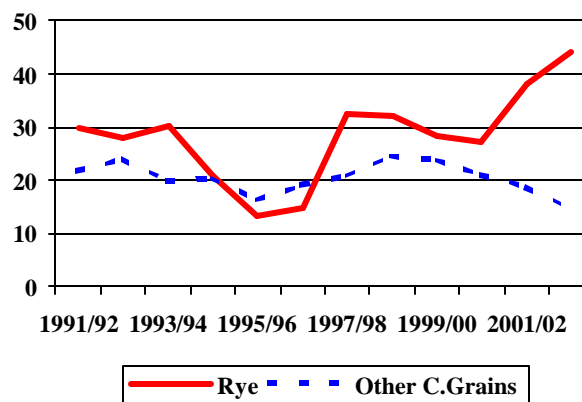
World coarse grain trade in 2002/03 is projected down nearly 2 million tons from a year earlier to 100.1 million tons. Global consumption is expected to continue to outpace production, dropping carryout stocks by 36 million tons to 134.8 million tons. U.S. corn, China corn, and EU barley and rye are forecast to comprise more than two-thirds of world coarse grain stocks.

Global corn trade is forecast down 1.8 million tons in 2002/03 largely due to the sharply lower Argentine crop and higher global prices. Despite the smaller U.S. crop, expanding U.S. exports will offset much of the reduction in Argentine shipments.

Barley supply is projected to be tight from Australia and Canada, whereas Russia and Ukraine are poised to fill the export gap with competitive prices and ample stocks.

Rye production in the EU has been artificially sustained by government programs despite stagnating demand. As a result, the stocks-to-use ratio has skyrocketed, while for other coarse grains it has declined.

Global Coarse Grains Stocks-to-Use Ratio



2002/03 Trade Changes

Selected Exporters

- **United States corn** cut 1.5 million tons to 51.0 million due to dramatically lower production and higher prices. **Barley** reduced by 100,000 tons to 500,000 because of tighter supplies available from Canada and strong competition for feed barley exports.
- **Brazil corn** lowered 500,000 tons to 1.0 million due to expectations of a smaller crop and strong domestic feed demand.
- **China corn** boosted by 2.0 million tons to 8.0 million as global prices rise with smaller crop prospects. In addition, **imports** are slashed by 900,000 tons to just 100,000.
- **Hungary corn** increased 200,000 tons to 2 million based on shrinking competition and increased demand prospects.
- **South Africa corn** raised 200,000 tons to 1.7 million because of improved production prospects.
- **Canada barley exports** plunged by 800,000 tons to 500,000 due to a sharply lower crop.

-
- **Russia and Ukraine barley** raised significantly by 500,000 tons and 550,000 tons, respectively, as both countries are well positioned to fill global feed demand.
 - **United States sorghum** (and **Mexico sorghum imports**) slashed by 500,000 tons as a result of poor production prospects.

Selected Importers

- **Canada corn** doubled to 2.0 million tons because of poor production prospects for all grain crops and strong domestic feed demand.
- **Saudi Arabia corn** dropped 300,000 tons to 1.5 million with prospects of more modest growth in the poultry sector.
- **Israel barley** was raised and **corn** lowered by 200,000 tons as ample supplies of cheap grain out of the Black Sea countries are likely to favor barley over corn.
- **United States barley** reduced by 175,000 tons to 500,000 because of reduced exportable supplies from Canada.

2001/02 Trade Changes

Selected Exporters

- **United States corn** is dropped 500,000 tons to 48.5 million.
- **Brazil corn** up 100,000 tons to 3.4 million based on a strong export pace.
- **China corn** raised 500,000 tons to 7.0 million because of recent strong sales.
- **Hungary corn** increased 500,000 tons to 3.0 million based on a continued strong export pace.
- **Australia barley** down 200,000 tons to 4.2 million because of slow export shipments, in particular to **China** (which import forecast is lowered 100,000 tons to 2.3 million).
- **United States barley** reduced by 100,000 tons to 500,000 and **sorghum** lowered 200,000 tons to 6.2 million due to slower than anticipated export pace.

Selected Importers

- **Saudi Arabia and Indonesia corn** each fell 200,000 tons to 1.4 million and 1.1 million, respectively as a result of weak demand.
- **Mexico sorghum** down 200,000 tons to 4.8 million based on weak demand.

**WORLD COARSE GRAIN TRADE
OCTOBER/SEPTEMBER YEAR
THOUSAND METRIC TONS**

	1998/99	1999/00	2000/01	2001/02 11-Jul	2001/02 12-Aug	2002/03 11-Jul	2002/03 12-Aug
EXPORTS							
Argentina	8,500	9,596	13,016	10,170	10,170	7,820	7,820
<u>Australia</u>	<u>4,859</u>	<u>3,836</u>	<u>4,631</u>	<u>5,200</u>	<u>5,000</u>	<u>4,460</u>	<u>4,460</u>
Canada	3,297	3,645	3,560	2,210	2,210	2,950	2,150
<u>China</u>	<u>3,363</u>	<u>9,954</u>	<u>7,296</u>	<u>6,525</u>	<u>7,025</u>	<u>6,020</u>	<u>8,020</u>
South Africa	828	873	1,458	1,390	1,390	1,530	1,730
<u>Russia</u>	<u>105</u>	<u>393</u>	<u>1,032</u>	<u>2,305</u>	<u>2,305</u>	<u>2,305</u>	<u>2,805</u>
Turkey	798	184	157	500	500	700	700
<u>EU</u>	<u>10,765</u>	<u>13,371</u>	<u>8,106</u>	<u>5,355</u>	<u>5,355</u>	<u>6,005</u>	<u>6,005</u>
Others	6,293	6,069	9,282	12,130	12,865	9,090	8,990
Subtotal	38,808	47,921	48,538	45,785	46,820	40,880	42,680
United States	57,719	56,557	55,164	56,039	55,239	59,529	57,429
<u>WORLD TOTAL</u>	<u>96,527</u>	<u>104,478</u>	<u>103,702</u>	<u>101,824</u>	<u>102,059</u>	<u>100,409</u>	<u>100,109</u>
IMPORTS							
Algeria	1,934	1,957	1,842	1,900	1,900	2,005	2,005
<u>Brazil</u>	<u>1,081</u>	<u>2,184</u>	<u>999</u>	<u>765</u>	<u>765</u>	<u>1,015</u>	<u>1,015</u>
Canada	948	1,133	2,889	3,100	3,100	1,035	2,085
<u>Chile</u>	<u>1,343</u>	<u>1,350</u>	<u>1,388</u>	<u>1,430</u>	<u>1,430</u>	<u>1,475</u>	<u>1,475</u>
China	2,615	2,335	2,564	2,475	2,375	3,525	2,625
<u>Colombia</u>	<u>1,686</u>	<u>2,112</u>	<u>1,993</u>	<u>1,965</u>	<u>2,015</u>	<u>1,915</u>	<u>1,940</u>
Costa Rica	430	550	513	600	600	600	600
<u>Dominican Republic</u>	<u>814</u>	<u>1,000</u>	<u>968</u>	<u>1,000</u>	<u>1,000</u>	<u>1,000</u>	<u>1,000</u>
Ecuador	305	255	149	220	275	220	220
<u>Egypt</u>	<u>3,687</u>	<u>4,600</u>	<u>5,339</u>	<u>5,250</u>	<u>5,250</u>	<u>5,250</u>	<u>5,250</u>
Iran	1,448	2,100	1,751	1,700	1,600	1,600	1,600
<u>Israel</u>	<u>1,135</u>	<u>1,331</u>	<u>1,402</u>	<u>1,150</u>	<u>1,150</u>	<u>1,150</u>	<u>1,150</u>
Japan	20,922	20,414	20,236	19,930	19,930	19,385	19,385
<u>Jordan</u>	<u>902</u>	<u>1,162</u>	<u>803</u>	<u>1,050</u>	<u>950</u>	<u>1,050</u>	<u>950</u>
Korea, North	200	150	688	400	400	400	400
<u>Korea, South</u>	<u>7,806</u>	<u>9,280</u>	<u>8,889</u>	<u>8,680</u>	<u>8,680</u>	<u>8,755</u>	<u>8,755</u>
Libya	339	475	396	450	500	450	500
<u>Malaysia</u>	<u>2,384</u>	<u>2,296</u>	<u>2,588</u>	<u>2,200</u>	<u>2,200</u>	<u>2,400</u>	<u>2,400</u>
Mexico	9,091	9,939	11,006	10,160	9,960	11,150	10,650
<u>Morocco</u>	<u>1,822</u>	<u>1,497</u>	<u>1,473</u>	<u>1,305</u>	<u>1,355</u>	<u>1,405</u>	<u>1,405</u>
Peru	1,100	912	912	975	975	975	975
<u>Poland</u>	<u>499</u>	<u>756</u>	<u>824</u>	<u>400</u>	<u>300</u>	<u>300</u>	<u>300</u>
Romania	161	150	463	100	100	125	125
<u>Russia</u>	<u>1,185</u>	<u>2,048</u>	<u>563</u>	<u>1,100</u>	<u>1,000</u>	<u>950</u>	<u>950</u>
Saudi Arabia	7,079	7,400	6,189	6,400	6,200	7,000	6,700
<u>South Africa</u>	<u>408</u>	<u>491</u>	<u>146</u>	<u>1,080</u>	<u>1,130</u>	<u>500</u>	<u>500</u>
Syria	1,002	1,325	1,090	1,100	1,200	700	700
<u>Taiwan</u>	<u>4,798</u>	<u>5,231</u>	<u>5,157</u>	<u>4,940</u>	<u>4,940</u>	<u>4,560</u>	<u>4,560</u>
Thailand	151	451	24	25	25	25	25
<u>Tunisia</u>	<u>784</u>	<u>805</u>	<u>1,375</u>	<u>1,350</u>	<u>1,400</u>	<u>1,400</u>	<u>1,400</u>
Turkey	1,027	1,461	648	555	1,375	555	805
<u>Venezuela</u>	<u>1,463</u>	<u>1,300</u>	<u>1,207</u>	<u>600</u>	<u>600</u>	<u>600</u>	<u>600</u>
Zimbabwe	350	63	66	210	210	210	210
<u>EU</u>	<u>3,117</u>	<u>2,699</u>	<u>3,104</u>	<u>4,110</u>	<u>4,110</u>	<u>2,665</u>	<u>2,665</u>
O.W. Europe	666	957	931	876	876	866	866
<u>United States</u>	<u>2,659</u>	<u>2,607</u>	<u>2,672</u>	<u>2,300</u>	<u>2,300</u>	<u>3,000</u>	<u>2,825</u>
Subtotal	87,341	94,776	93,247	91,851	92,176	90,216	89,616
Other Countries	5,318	8,080	8,389	7,851	8,386	7,730	8,200
Unaccounted	3,868	1,622	2,066	2,122	1,497	2,463	2,293
<u>WORLD TOTAL</u>	<u>96,527</u>	<u>104,478</u>	<u>103,702</u>	<u>101,824</u>	<u>102,059</u>	<u>100,409</u>	<u>100,109</u>

WORLD COARSE GRAIN PRODUCTION, CONSUMPTION AND STOCKS
LOCAL MARKETING YEARS
THOUSAND METRIC TONS

	1998/99	1999/00	2000/01	2001/02 11-Jul	2001/02 12-Aug	2002/03 11-Jul	2002/03 12-Aug
PRODUCTION							
Argentina	17,751	21,683	19,580	18,445	18,445	14,770	14,770
<u>Australia</u>	<u>10,069</u>	<u>8,686</u>	<u>10,846</u>	<u>11,075</u>	<u>11,075</u>	<u>10,530</u>	<u>10,530</u>
Brazil	33,505	32,553	42,698	36,162	36,662	39,659	38,159
<u>Canada</u>	<u>26,565</u>	<u>26,832</u>	<u>24,326</u>	<u>22,885</u>	<u>22,885</u>	<u>27,670</u>	<u>23,470</u>
China	143,460	137,218	113,953	122,405	122,405	133,400	133,400
Egypt	6,540	6,598	6,556	7,080	7,080	7,120	7,120
Hungary	7,597	8,293	6,080	9,171	9,171	7,750	7,550
India	<u>31,670</u>	<u>30,480</u>	<u>31,631</u>	<u>30,932</u>	<u>30,932</u>	<u>32,000</u>	<u>30,000</u>
Indonesia	6,500	6,200	5,900	6,000	6,000	6,100	6,100
<u>Mexico</u>	<u>24,698</u>	<u>26,184</u>	<u>24,455</u>	<u>26,967</u>	<u>26,967</u>	<u>26,720</u>	<u>26,720</u>
Philippines	4,894	4,449	4,508	4,525	4,525	4,525	4,525
<u>Romania</u>	<u>9,640</u>	<u>11,945</u>	<u>5,775</u>	<u>8,460</u>	<u>8,460</u>	<u>9,055</u>	<u>7,555</u>
South Africa	8,143	11,054	7,830	9,395	9,502	9,333	9,833
<u>Ukraine</u>	<u>10,337</u>	<u>10,591</u>	<u>12,993</u>	<u>16,965</u>	<u>16,965</u>	<u>14,900</u>	<u>14,550</u>
EU	105,514	102,113	107,193	105,714	105,714	108,105	108,105
Others	<u>170,573</u>	<u>168,048</u>	<u>160,632</u>	<u>184,765</u>	<u>184,765</u>	<u>180,379</u>	<u>178,894</u>
Subtotal	617,456	612,927	584,956	620,946	621,553	632,016	621,281
United States	271,474	263,172	273,129	261,862	261,862	270,656	243,096
<u>WORLD TOTAL</u>	<u>888,930</u>	<u>876,099</u>	<u>858,085</u>	<u>882,808</u>	<u>883,415</u>	<u>902,672</u>	<u>864,377</u>
CONSUMPTION							
Argentina	10,033	9,084	9,386	8,257	8,257	8,090	8,090
Brazil	<u>34,862</u>	<u>34,488</u>	<u>35,793</u>	<u>37,344</u>	<u>37,344</u>	<u>38,994</u>	<u>38,494</u>
Canada	23,583	23,261	24,709	24,874	24,699	25,073	23,773
<u>China</u>	<u>128,923</u>	<u>129,514</u>	<u>130,286</u>	<u>134,755</u>	<u>134,655</u>	<u>137,975</u>	<u>137,875</u>
Egypt	10,227	11,098	11,858	12,360	12,360	12,370	12,370
India	<u>31,823</u>	<u>30,450</u>	<u>31,516</u>	<u>31,275</u>	<u>31,275</u>	<u>31,950</u>	<u>30,500</u>
Indonesia	6,711	7,279	7,150	7,200	7,100	7,250	7,200
Japan	<u>21,273</u>	<u>20,818</u>	<u>20,362</u>	<u>20,084</u>	<u>20,084</u>	<u>19,785</u>	<u>19,785</u>
Korea, South	8,312	9,392	9,251	9,235	9,235	9,310	9,310
<u>Malaysia</u>	<u>2,425</u>	<u>2,353</u>	<u>2,420</u>	<u>2,285</u>	<u>2,285</u>	<u>2,485</u>	<u>2,485</u>
Mexico	33,498	35,553	36,070	37,410	37,310	38,300	38,000
<u>Romania</u>	<u>10,311</u>	<u>10,960</u>	<u>7,290</u>	<u>7,905</u>	<u>7,905</u>	<u>8,230</u>	<u>7,530</u>
Russia	25,637	24,927	26,875	29,250	29,150	30,700	30,400
<u>Saudi Arabia</u>	<u>7,669</u>	<u>7,454</u>	<u>6,803</u>	<u>7,314</u>	<u>7,114</u>	<u>7,214</u>	<u>6,914</u>
South Africa	8,248	8,517	8,641	8,343	8,500	8,488	8,488
EU	<u>97,518</u>	<u>95,815</u>	<u>102,814</u>	<u>102,291</u>	<u>102,291</u>	<u>101,948</u>	<u>101,998</u>
Others	203,097	208,636	194,838	203,321	203,093	206,826	205,139
Subtotal	664,150	669,599	666,062	683,503	682,657	694,988	688,351
United States	205,275	212,130	215,388	215,951	216,199	218,228	212,006
<u>WORLD TOTAL</u>	<u>869,425</u>	<u>881,729</u>	<u>881,450</u>	<u>899,454</u>	<u>898,856</u>	<u>913,216</u>	<u>900,357</u>
ENDING STOCKS							
Canada	4,876	5,673	4,277	3,043	3,218	3,500	2,775
<u>China</u>	<u>102,607</u>	<u>102,692</u>	<u>81,627</u>	<u>65,227</u>	<u>64,727</u>	<u>58,157</u>	<u>54,857</u>
Russia	1,785	1,060	2,600	6,995	6,995	5,840	5,340
EU	<u>23,533</u>	<u>19,519</u>	<u>16,878</u>	<u>19,726</u>	<u>19,726</u>	<u>22,493</u>	<u>22,463</u>
Others	31,064	31,807	28,160	30,039	30,200	28,209	26,470
Subtotal	163,865	160,751	133,542	125,030	124,866	118,199	111,905
United States	51,373	48,857	52,701	45,301	45,936	41,588	22,917
<u>WORLD TOTAL</u>	<u>215,238</u>	<u>209,608</u>	<u>186,243</u>	<u>170,331</u>	<u>170,802</u>	<u>159,787</u>	<u>134,822</u>

**REGIONAL COARSE GRAIN IMPORTS, PRODUCTION, CONSUMPTION AND STOCKS
THOUSAND METRIC TONS**

	1998/99	1999/00	2000/01	2001/02 11-Jul	2001/02 12-Aug	2002/03 11-Jul	2002/03 12-Aug
IMPORTS							
North America 1/	12,698	13,679	16,567	15,560	15,360	15,185	15,560
<u>Latin America 2/</u>	<u>9,911</u>	<u>11,931</u>	<u>10,305</u>	<u>9,800</u>	<u>9,855</u>	<u>10,090</u>	<u>9,915</u>
EU	3,117	2,699	3,104	4,110	4,110	2,665	2,665
<u>Other West. Eur. 3/</u>	<u>666</u>	<u>957</u>	<u>931</u>	<u>876</u>	<u>876</u>	<u>866</u>	<u>866</u>
Former USSR	1,606	2,924	1,015	1,620	1,520	1,445	1,445
<u>Eastern Europe 4/</u>	<u>1,241</u>	<u>1,711</u>	<u>2,830</u>	<u>1,276</u>	<u>1,716</u>	<u>1,195</u>	<u>1,495</u>
Middle East 5/	13,514	15,754	12,813	12,755	13,325	12,855	12,705
<u>North Africa 6/</u>	<u>8,566</u>	<u>9,334</u>	<u>10,425</u>	<u>10,255</u>	<u>10,405</u>	<u>10,510</u>	<u>10,560</u>
Other Africa 7/	1,392	1,265	1,541	2,595	2,670	1,880	1,880
South Asia 8/	175	260	56	105	105	305	305
Other Asia 9/	39,642	42,243	41,982	40,655	40,525	41,055	40,325
<u>Oceania 10/</u>	<u>75</u>	<u>69</u>	<u>37</u>	<u>65</u>	<u>65</u>	<u>65</u>	<u>65</u>
PRODUCTION							
North America 1/	322,737	316,188	321,910	311,714	311,714	325,046	293,286
<u>Latin America 2/</u>	<u>61,658</u>	<u>65,100</u>	<u>73,910</u>	<u>65,995</u>	<u>66,495</u>	<u>66,223</u>	<u>64,723</u>
EU	105,514	102,113	107,193	105,714	105,714	108,105	108,105
<u>Other West. Eur. 3/</u>	<u>1,819</u>	<u>1,827</u>	<u>1,827</u>	<u>1,827</u>	<u>1,827</u>	<u>1,827</u>	<u>1,827</u>
Former USSR	39,830	42,211	51,720	64,052	64,052	56,505	56,105
<u>Eastern Europe 4/</u>	<u>51,119</u>	<u>54,647</u>	<u>35,960</u>	<u>51,724</u>	<u>51,724</u>	<u>49,310</u>	<u>46,175</u>
Middle East 5/	17,497	14,032	13,957	14,732	14,732	15,787	15,787
<u>North Africa 6/</u>	<u>10,063</u>	<u>9,366</u>	<u>7,580</u>	<u>9,335</u>	<u>9,335</u>	<u>9,722</u>	<u>9,722</u>
Other Africa 7/	67,619	69,609	62,677	68,505	68,612	69,570	70,070
<u>South Asia 8/</u>	<u>36,021</u>	<u>34,808</u>	<u>35,831</u>	<u>35,137</u>	<u>35,137</u>	<u>36,230</u>	<u>34,230</u>
Other Asia 9/	164,095	156,636	133,775	142,099	142,099	152,918	152,918
<u>Oceania 10/</u>	<u>10,679</u>	<u>9,306</u>	<u>11,466</u>	<u>11,695</u>	<u>11,695</u>	<u>11,150</u>	<u>11,150</u>
CONSUMPTION							
North America 1/	262,356	270,944	276,167	278,235	278,208	281,601	273,779
<u>Latin America 2/</u>	<u>63,872</u>	<u>63,537</u>	<u>65,317</u>	<u>65,674</u>	<u>65,659</u>	<u>67,393</u>	<u>66,758</u>
EU	97,518	95,815	102,814	102,291	102,291	101,948	101,998
<u>Other West. Eur. 3/</u>	<u>2,634</u>	<u>2,812</u>	<u>2,712</u>	<u>2,734</u>	<u>2,734</u>	<u>2,769</u>	<u>2,769</u>
Former USSR	47,061	44,515	48,176	53,764	53,649	54,424	53,574
<u>Eastern Europe 4/</u>	<u>51,571</u>	<u>52,440</u>	<u>40,292</u>	<u>46,819</u>	<u>46,759</u>	<u>47,314</u>	<u>45,439</u>
Middle East 5/	29,741	29,539	27,035	27,146	27,766	27,731	27,581
<u>North Africa 6/</u>	<u>18,331</u>	<u>18,452</u>	<u>18,308</u>	<u>19,633</u>	<u>19,633</u>	<u>19,802</u>	<u>19,952</u>
Other Africa 7/	67,230	67,638	65,440	69,068	69,250	69,760	69,760
<u>South Asia 8/</u>	<u>36,174</u>	<u>34,788</u>	<u>35,721</u>	<u>35,485</u>	<u>35,485</u>	<u>36,185</u>	<u>34,735</u>
Other Asia 9/	185,894	188,463	188,707	192,494	192,464	195,270	195,390
<u>Oceania 10/</u>	<u>6,098</u>	<u>5,868</u>	<u>6,716</u>	<u>6,985</u>	<u>6,985</u>	<u>6,840</u>	<u>6,840</u>
ENDING STOCKS							
North America 1/	59,375	58,209	60,038	51,107	51,816	47,406	27,709
<u>Latin America 2/</u>	<u>3,593</u>	<u>3,141</u>	<u>3,958</u>	<u>3,435</u>	<u>3,979</u>	<u>3,460</u>	<u>3,464</u>
EU	23,533	19,519	16,878	19,726	19,726	22,493	22,463
<u>Other West. Eur. 3/</u>	<u>695</u>	<u>659</u>	<u>660</u>	<u>629</u>	<u>629</u>	<u>553</u>	<u>553</u>
Former USSR	4,873	3,923	6,245	11,248	11,348	9,054	8,804
<u>Eastern Europe 4/</u>	<u>3,975</u>	<u>4,753</u>	<u>2,083</u>	<u>4,319</u>	<u>4,409</u>	<u>4,300</u>	<u>3,580</u>
Middle East 5/	4,170	2,856	3,011	2,827	2,877	2,663	2,713
<u>North Africa 6/</u>	<u>1,185</u>	<u>1,240</u>	<u>749</u>	<u>1,033</u>	<u>1,133</u>	<u>1,313</u>	<u>1,313</u>
Other Africa 7/	3,586	4,636	2,465	3,163	2,422	3,343	2,602
<u>South Asia 8/</u>	<u>740</u>	<u>1,020</u>	<u>1,135</u>	<u>842</u>	<u>842</u>	<u>942</u>	<u>592</u>
Other Asia 9/	108,611	108,884	87,850	71,206	70,625	63,539	60,108
<u>Oceania 10/</u>	<u>902</u>	<u>768</u>	<u>1,171</u>	<u>796</u>	<u>996</u>	<u>721</u>	<u>921</u>

NOTES: Footnotes appear on last page of this circular. Imports are reported on an international year basis. All other data are reported using marketing years.

**WORLD CORN TRADE
OCTOBER/SEPTEMBER YEAR
THOUSAND METRIC TONS**

	1998/99	1999/00	2000/01	2001/02 11-Jul	2001/02 12-Aug	2002/03 11-Jul	2002/03 12-Aug
EXPORTS							
Argentina	7,848	8,859	12,229	9,500	9,500	7,300	7,300
<u>Brazil</u>	<u>8</u>	<u>50</u>	<u>3,741</u>	<u>3,300</u>	<u>3,400</u>	<u>1,500</u>	<u>1,000</u>
Canada	880	378	115	250	250	300	300
<u>China</u>	<u>3,340</u>	<u>9,935</u>	<u>7,276</u>	<u>6,500</u>	<u>7,000</u>	<u>6,000</u>	<u>8,000</u>
Hungary	1,829	1,786	730	2,500	3,000	1,800	2,000
<u>Romania</u>	<u>400</u>	<u>400</u>	<u>50</u>	<u>200</u>	<u>200</u>	<u>500</u>	<u>100</u>
South Africa	798	836	1,415	1,350	1,350	1,500	1,700
<u>Thailand</u>	<u>100</u>	<u>75</u>	<u>397</u>	<u>200</u>	<u>200</u>	<u>200</u>	<u>200</u>
Ukraine	365	55	397	350	350	300	300
EU	99	210	266	50	50	50	50
Others	1,045	1,278	1,448	940	955	1,000	1,050
<u>Subtotal</u>	<u>16,712</u>	<u>23,862</u>	<u>28,064</u>	<u>25,140</u>	<u>26,255</u>	<u>20,450</u>	<u>22,000</u>
United States	51,949	49,378	48,192	49,000	48,500	52,500	51,000
<u>WORLD TOTAL</u>	<u>68,661</u>	<u>73,240</u>	<u>76,256</u>	<u>74,140</u>	<u>74,755</u>	<u>72,950</u>	<u>73,000</u>
IMPORTS							
<u>Algeria</u>	<u>1,171</u>	<u>1,300</u>	<u>1,500</u>	<u>1,600</u>	<u>1,600</u>	<u>1,700</u>	<u>1,700</u>
Brazil	945	1,789	671	400	400	500	500
<u>Canada</u>	<u>903</u>	<u>1,084</u>	<u>2,797</u>	<u>3,000</u>	<u>3,000</u>	<u>1,000</u>	<u>2,000</u>
Chile	1,268	1,260	1,362	1,400	1,400	1,450	1,450
<u>China</u>	<u>262</u>	<u>71</u>	<u>89</u>	<u>50</u>	<u>50</u>	<u>1,000</u>	<u>100</u>
Colombia	1,570	2,005	1,857	1,800	1,800	1,800	1,800
Costa Rica	430	550	513	600	600	600	600
Dominican Republic	814	1,000	968	1,000	1,000	1,000	1,000
<u>Ecuador</u>	<u>285</u>	<u>225</u>	<u>149</u>	<u>200</u>	<u>250</u>	<u>200</u>	<u>200</u>
Egypt	3,687	4,600	5,268	5,200	5,200	5,200	5,200
<u>Guatemala</u>	<u>385</u>	<u>500</u>	<u>549</u>	<u>550</u>	<u>550</u>	<u>550</u>	<u>550</u>
Indonesia	455	1,229	1,280	1,300	1,100	1,300	1,200
<u>Iran</u>	<u>1,072</u>	<u>1,100</u>	<u>929</u>	<u>1,000</u>	<u>1,000</u>	<u>1,000</u>	<u>1,000</u>
Israel	579	800	993	800	800	800	600
<u>Japan</u>	<u>16,336</u>	<u>16,117</u>	<u>16,340</u>	<u>16,000</u>	<u>16,000</u>	<u>15,500</u>	<u>15,500</u>
Jordan	448	450	454	450	350	450	350
<u>Korea, North</u>	<u>200</u>	<u>150</u>	<u>688</u>	<u>400</u>	<u>400</u>	<u>400</u>	<u>400</u>
Korea, South	7,517	8,694	8,743	8,500	8,500	8,500	8,500
<u>Malaysia</u>	<u>2,384</u>	<u>2,296</u>	<u>2,588</u>	<u>2,200</u>	<u>2,200</u>	<u>2,400</u>	<u>2,400</u>
Mexico	5,615	4,911	5,928	5,000	5,000	6,000	6,000
<u>Morocco</u>	<u>729</u>	<u>750</u>	<u>966</u>	<u>800</u>	<u>800</u>	<u>900</u>	<u>900</u>
Peru	1,050	862	861	900	900	900	900
<u>Philippines</u>	<u>129</u>	<u>582</u>	<u>246</u>	<u>400</u>	<u>400</u>	<u>400</u>	<u>400</u>
Poland	224	250	222	100	100	100	100
<u>Russia</u>	<u>524</u>	<u>870</u>	<u>150</u>	<u>800</u>	<u>800</u>	<u>600</u>	<u>600</u>
Saudi Arabia	1,265	1,500	1,389	1,600	1,400	1,800	1,500
<u>South Africa</u>	<u>307</u>	<u>350</u>	<u>0</u>	<u>900</u>	<u>900</u>	<u>350</u>	<u>350</u>
Syria	570	750	794	600	700	600	600
<u>Taiwan</u>	<u>4,575</u>	<u>5,023</u>	<u>4,924</u>	<u>4,700</u>	<u>4,700</u>	<u>4,300</u>	<u>4,300</u>
Tunisia	561	566	776	800	800	800	800
<u>Turkey</u>	<u>887</u>	<u>1,250</u>	<u>608</u>	<u>500</u>	<u>1,300</u>	<u>500</u>	<u>750</u>
Venezuela	1,463	1,300	1,207	600	600	600	600
<u>Zimbabwe</u>	<u>350</u>	<u>50</u>	<u>50</u>	<u>200</u>	<u>200</u>	<u>200</u>	<u>200</u>
EU	2,716	2,296	2,857	2,750	2,750	2,500	2,500
<u>O.W. Europe</u>	<u>254</u>	<u>276</u>	<u>329</u>	<u>335</u>	<u>335</u>	<u>335</u>	<u>335</u>
United States	388	229	120	375	375	450	450
Subtotal	62,318	67,035	69,165	67,810	68,260	66,685	66,335
Other Countries	3,654	5,117	5,784	4,955	5,690	4,820	5,390
Unaccounted	2,689	1,088	1,307	1,375	805	1,445	1,275
<u>WORLD TOTAL</u>	<u>68,661</u>	<u>73,240</u>	<u>76,256</u>	<u>74,140</u>	<u>74,755</u>	<u>72,950</u>	<u>73,000</u>

**WORLD CORN PRODUCTION, CONSUMPTION AND STOCKS
LOCAL MARKETING YEARS
THOUSAND METRIC TONS**

	1998/99	1999/00	2000/01	2001/02 11-Jul	2001/02 12-Aug	2002/03 11-Jul	2002/03 12-Aug
PRODUCTION							
Argentina	13,500	17,200	15,400	14,400	14,400	11,000	11,000
<u>Brazil</u>	<u>32,393</u>	<u>31,641</u>	<u>41,536</u>	<u>35,000</u>	<u>35,500</u>	<u>38,500</u>	<u>37,000</u>
Canada	8,952	9,161	6,827	8,200	8,200	10,000	10,000
<u>China</u>	<u>132,954</u>	<u>128,086</u>	<u>106,000</u>	<u>114,000</u>	<u>114,000</u>	<u>125,000</u>	<u>125,000</u>
Egypt	5,605	5,678	5,636	6,160	6,160	6,200	6,200
<u>Hungary</u>	<u>6,000</u>	<u>7,000</u>	<u>5,000</u>	<u>7,600</u>	<u>7,600</u>	<u>6,500</u>	<u>6,300</u>
India	10,680	11,470	12,068	11,500	11,500	12,000	11,000
<u>Indonesia</u>	<u>6,500</u>	<u>6,200</u>	<u>5,900</u>	<u>6,000</u>	<u>6,000</u>	<u>6,100</u>	<u>6,100</u>
Mexico	17,788	19,240	17,920	19,600	19,600	19,000	19,000
<u>Nigeria</u>	<u>4,950</u>	<u>5,100</u>	<u>4,000</u>	<u>5,000</u>	<u>5,000</u>	<u>5,000</u>	<u>5,000</u>
Philippines	4,894	4,449	4,508	4,525	4,525	4,525	4,525
<u>Romania</u>	<u>8,000</u>	<u>10,500</u>	<u>4,800</u>	<u>7,000</u>	<u>7,000</u>	<u>8,000</u>	<u>6,500</u>
Serbia	5,174	6,140	2,944	6,200	6,200	5,500	4,800
<u>South Africa</u>	<u>7,724</u>	<u>10,563</u>	<u>7,483</u>	<u>9,000</u>	<u>9,100</u>	<u>9,000</u>	<u>9,500</u>
Thailand	4,300	3,900	4,700	4,400	4,400	4,000	4,000
<u>Ukraine</u>	<u>2,301</u>	<u>1,737</u>	<u>3,848</u>	<u>3,600</u>	<u>3,600</u>	<u>3,700</u>	<u>3,000</u>
EU	35,295	36,404	37,460	38,810	38,810	39,190	39,190
Others	50,739	52,738	48,184	50,393	50,393	52,812	52,662
Subtotal	357,749	367,207	334,214	351,388	351,988	366,027	360,777
United States	247,882	239,549	251,854	241,485	241,485	248,677	225,715
<u>WORLD TOTAL</u>	<u>605.631</u>	<u>606.756</u>	<u>586.068</u>	<u>592.873</u>	<u>593.473</u>	<u>614.704</u>	<u>586.492</u>
CONSUMPTION							
<u>Brazil</u>	<u>33,615</u>	<u>33,044</u>	<u>34,500</u>	<u>35,700</u>	<u>35,700</u>	<u>37,500</u>	<u>37,000</u>
Canada	8,918	8,822	9,934	11,180	11,180	10,700	11,700
<u>China</u>	<u>115,500</u>	<u>118,000</u>	<u>120,000</u>	<u>124,000</u>	<u>124,000</u>	<u>127,000</u>	<u>127,000</u>
Egypt	9,292	10,178	10,900	11,365	11,365	11,400	11,400
<u>Hungary</u>	<u>4,921</u>	<u>5,014</u>	<u>4,635</u>	<u>4,800</u>	<u>4,400</u>	<u>4,900</u>	<u>4,400</u>
India	10,853	11,350	11,950	11,850	11,850	11,950	11,500
<u>Indonesia</u>	<u>6,711</u>	<u>7,279</u>	<u>7,150</u>	<u>7,200</u>	<u>7,100</u>	<u>7,250</u>	<u>7,200</u>
Japan	16,436	16,317	16,200	15,900	15,900	15,700	15,700
<u>Korea, South</u>	<u>7,617</u>	<u>8,400</u>	<u>8,700</u>	<u>8,650</u>	<u>8,650</u>	<u>8,650</u>	<u>8,650</u>
Malaysia	2,425	2,353	2,420	2,285	2,285	2,485	2,485
<u>Mexico</u>	<u>23,037</u>	<u>23,657</u>	<u>24,000</u>	<u>25,000</u>	<u>25,000</u>	<u>25,500</u>	<u>25,500</u>
<u>Nigeria</u>	<u>4,950</u>	<u>5,100</u>	<u>4,000</u>	<u>5,020</u>	<u>5,030</u>	<u>5,050</u>	<u>5,050</u>
<u>Romania</u>	<u>8,621</u>	<u>9,500</u>	<u>6,250</u>	<u>6,800</u>	<u>6,800</u>	<u>7,200</u>	<u>6,500</u>
Serbia	5,048	6,091	3,119	6,150	6,150	5,450	4,750
<u>South Africa</u>	<u>7,714</u>	<u>7,962</u>	<u>8,148</u>	<u>7,800</u>	<u>7,900</u>	<u>8,000</u>	<u>8,000</u>
Others	131,250	139,243	136,360	133,820	134,230	137,227	136,967
Subtotal	396,908	412,310	408,266	417,520	417,540	425,962	423,802
United States	185,788	192,496	198,102	199,908	200,162	200,923	197,367
<u>WORLD TOTAL</u>	<u>582.696</u>	<u>604.806</u>	<u>606.368</u>	<u>617.428</u>	<u>617.702</u>	<u>626.885</u>	<u>621.169</u>
ENDING STOCKS							
<u>Brazil</u>	<u>1,000</u>	<u>600</u>	<u>1,606</u>	<u>1,131</u>	<u>1,631</u>	<u>1,156</u>	<u>1,156</u>
China	102,092	102,314	81,127	64,677	64,177	57,677	54,277
<u>Japan</u>	<u>1,355</u>	<u>1,156</u>	<u>1,297</u>	<u>1,398</u>	<u>1,398</u>	<u>1,199</u>	<u>1,199</u>
Mexico	1,850	2,336	2,167	1,753	1,752	1,238	1,237
<u>South Africa</u>	<u>863</u>	<u>2,041</u>	<u>490</u>	<u>1,431</u>	<u>690</u>	<u>1,331</u>	<u>590</u>
EU	3,739	3,629	3,380	3,290	3,290	3,230	3,230
<u>Others</u>	<u>12,803</u>	<u>15,339</u>	<u>12,436</u>	<u>12,068</u>	<u>12,021</u>	<u>11,673</u>	<u>10,666</u>
Subtotal	123,702	127,415	102,503	85,748	84,959	77,504	72,355
United States	45,391	43,628	48,240	41,174	41,555	37,237	19,482
<u>WORLD TOTAL</u>	<u>169.093</u>	<u>171.043</u>	<u>150.743</u>	<u>126.922</u>	<u>126.514</u>	<u>114.741</u>	<u>91.837</u>

REGIONAL CORN IMPORTS, PRODUCTION, CONSUMPTION AND STOCKS
THOUSAND METRIC TONS

	1998/99	1999/00	2000/01	2001/02 11-Jul	2001/02 12-Aug	2002/03 11-Jul	2002/03 12-Aug
IMPORTS							
North America 1/	6,906	6,224	8,845	8,375	8,375	7,450	8,450
Latin America 2/	9,456	11,198	9,747	9,115	9,115	9,315	9,115
EU	2,716	2,296	2,857	2,750	2,750	2,500	2,500
Other Wst. Eur. 3/	254	276	329	335	335	335	335
Former USSR	627	1,095	387	1,020	1,020	770	770
Eastern Europe 4/	689	843	1,590	590	1,130	590	890
Middle East 5/	5,383	6,475	5,760	5,500	6,150	5,700	5,350
North Africa 6/	6,239	7,491	8,762	8,650	8,650	8,850	8,850
Other Africa 7/	1,268	1,061	1,345	2,405	2,430	1,720	1,720
South Asia 8/	175	260	51	100	100	100	300
Other Asia 9/	32,190	34,887	35,232	33,880	33,850	34,130	33,400
Oceania 10/	13	16	14	15	15	15	15
PRODUCTION							
North America 1/	274,622	267,950	276,601	269,285	269,285	277,677	254,715
Latin America 2/	54,311	57,805	66,434	58,889	59,389	59,232	57,732
EU	35,295	36,404	37,460	38,810	38,810	39,190	39,190
Other Wst. Eur. 3/	185	220	220	220	220	220	220
Former USSR	5,370	5,078	7,518	6,765	6,765	7,545	6,545
Eastern Europe 4/	25,263	30,705	17,069	27,406	27,406	26,530	24,280
Middle East 5/	3,742	3,107	2,957	2,857	2,857	3,257	3,257
North Africa 6/	5,908	5,880	5,692	6,362	6,362	6,402	6,402
Other Africa 7/	33,894	37,947	31,534	34,216	34,316	35,285	35,785
South Asia 8/	13,782	14,540	15,138	14,570	14,570	15,095	14,095
Other Asia 9/	152,631	146,490	124,800	132,682	132,682	143,481	143,481
Oceania 10/	483	510	500	666	666	645	645
CONSUMPTION							
North America 1/	217,743	224,975	232,036	236,088	236,342	237,123	234,567
Latin America 2/	56,810	56,347	57,922	58,447	58,427	60,337	59,647
EU	38,578	38,600	40,300	41,600	41,600	41,700	41,700
Other Wst. Eur. 3/	479	496	549	555	555	555	555
Former USSR	6,940	6,514	7,152	7,175	7,175	8,605	7,705
Eastern Europe 4/	25,231	27,885	19,679	24,315	24,365	24,545	23,145
Middle East 5/	9,114	9,737	8,993	8,407	9,007	8,957	8,607
North Africa 6/	12,146	13,115	14,464	15,067	15,067	15,202	15,202
Other Africa 7/	33,979	35,546	34,101	34,691	34,816	35,380	35,380
South Asia 8/	13,955	14,430	15,021	14,920	14,920	15,045	14,595
Other Asia 9/	166,316	170,846	173,087	176,340	176,410	178,890	179,110
Oceania 10/	457	470	465	580	580	560	560
ENDING STOCKS							
North America 1/	48,126	47,516	51,287	43,677	44,057	39,275	21,469
Latin America 2/	2,572	2,139	3,229	2,757	3,251	2,827	2,811
EU	3,739	3,629	3,380	3,290	3,290	3,230	3,230
Other Wst. Eur. 3/	80	80	80	80	80	80	80
Former USSR	1,356	1,200	1,495	1,445	1,445	995	895
Eastern Europe 4/	1,886	2,926	1,149	1,930	1,920	2,005	1,595
Middle East 5/	809	651	368	318	368	318	368
North Africa 6/	391	491	494	489	489	489	489
Other Africa 7/	2,821	4,321	2,158	2,779	2,038	2,894	2,153
South Asia 8/	300	670	788	488	488	588	238
Other Asia 9/	107,002	107,409	86,303	69,656	69,075	62,027	58,496
Oceania 10/	11	11	12	13	13	13	13

NOTES: Footnotes appear on last page of this circular. Imports are reported on an international year basis. All other data are reported using marketing years.

**WORLD BARLEY TRADE
OCTOBER/SEPTEMBER YEAR
THOUSAND METRIC TONS**

	1998/99	1999/00	2000/01	2001/02 11-Jul	2001/02 12-Aug	2002/03 11-Jul	2002/03 12-Aug
EXPORTS							
<u>Argentina</u>	<u>132</u>	<u>50</u>	<u>202</u>	<u>200</u>	<u>200</u>	<u>200</u>	<u>200</u>
Australia	4,241	2,870	3,600	4,400	4,200	3,500	3,500
<u>Canada</u>	<u>1,185</u>	<u>1,806</u>	<u>1,956</u>	<u>1,000</u>	<u>1,000</u>	<u>1,300</u>	<u>500</u>
Kazakstan	475	772	292	450	450	500	500
Russia	92	393	1,031	2,300	2,300	2,300	2,800
Turkey	740	181	150	500	500	700	700
<u>Ukraine</u>	<u>972</u>	<u>787</u>	<u>1,479</u>	<u>2,700</u>	<u>2,700</u>	<u>2,300</u>	<u>2,850</u>
EU	8,894	10,458	6,148	4,000	4,000	4,500	4,500
<u>Eastern Europe</u>	<u>475</u>	<u>607</u>	<u>577</u>	<u>575</u>	<u>575</u>	<u>650</u>	<u>650</u>
Others	29	18	72	490	540	125	125
Subtotal	17,235	17,942	15,507	16,615	16,465	16,075	16,325
United States	550	852	1,065	600	500	600	500
<u>WORLD TOTAL</u>	<u>17,785</u>	<u>18,794</u>	<u>16,572</u>	<u>17,215</u>	<u>16,965</u>	<u>16,675</u>	<u>16,825</u>
IMPORTS							
Algeria	759	652	334	300	300	300	300
<u>Brazil</u>	<u>115</u>	<u>130</u>	<u>170</u>	<u>200</u>	<u>200</u>	<u>200</u>	<u>200</u>
China	1,986	2,239	2,453	2,400	2,300	2,500	2,500
<u>Colombia</u>	<u>97</u>	<u>100</u>	<u>129</u>	<u>150</u>	<u>200</u>	<u>100</u>	<u>125</u>
Cyprus	200	428	268	300	300	300	300
<u>Iran</u>	<u>376</u>	<u>1,000</u>	<u>822</u>	<u>700</u>	<u>600</u>	<u>600</u>	<u>600</u>
Israel	464	351	326	300	300	300	500
<u>Japan</u>	<u>1,660</u>	<u>1,608</u>	<u>1,498</u>	<u>1,500</u>	<u>1,500</u>	<u>1,600</u>	<u>1,600</u>
Jordan	454	712	349	600	600	600	600
<u>Korea, South</u>	<u>113</u>	<u>106</u>	<u>85</u>	<u>100</u>	<u>100</u>	<u>100</u>	<u>100</u>
Kuwait	134	125	45	125	125	125	125
<u>Libya</u>	<u>248</u>	<u>200</u>	<u>144</u>	<u>200</u>	<u>250</u>	<u>200</u>	<u>250</u>
Mexico	155	212	119	100	100	100	100
<u>Morocco</u>	<u>951</u>	<u>747</u>	<u>506</u>	<u>500</u>	<u>550</u>	<u>500</u>	<u>500</u>
Russia	335	737	346	300	200	350	350
<u>Saudi Arabia</u>	<u>5,814</u>	<u>5,900</u>	<u>4,800</u>	<u>4,800</u>	<u>4,800</u>	<u>5,200</u>	<u>5,200</u>
South Africa	84	105	122	100	150	100	100
<u>Syria</u>	<u>432</u>	<u>575</u>	<u>296</u>	<u>500</u>	<u>500</u>	<u>100</u>	<u>100</u>
Taiwan	194	167	195	200	200	200	200
<u>Tunisia</u>	<u>223</u>	<u>239</u>	<u>599</u>	<u>550</u>	<u>600</u>	<u>600</u>	<u>600</u>
Turkey	140	69	34	50	50	50	50
EU	91	70	212	1,000	1,000	100	100
O.W. Europe	310	546	478	435	435	425	425
<u>Eastern Europe</u>	<u>544</u>	<u>545</u>	<u>796</u>	<u>530</u>	<u>430</u>	<u>450</u>	<u>450</u>
United States	597	627	646	475	475	675	500
Subtotal	16,476	18,190	15,772	16,415	16,265	15,775	15,875
Other Countries	516	423	411	335	335	255	305
Unaccounted	793	181	389	465	365	645	645
<u>WORLD TOTAL</u>	<u>17,785</u>	<u>18,794</u>	<u>16,572</u>	<u>17,215</u>	<u>16,965</u>	<u>16,675</u>	<u>16,825</u>

WORLD BARLEY PRODUCTION, CONSUMPTION AND STOCKS
LOCAL MARKETING YEARS
THOUSAND METRIC TONS

	1998/99	1999/00	2000/01	2001/02 11-Jul	2001/02 12-Aug	2002/03 11-Jul	2002/03 12-Aug
PRODUCTION							
Algeria	720	510	163	574	574	550	550
<u>Australia</u>	<u>5,987</u>	<u>5,032</u>	<u>7,196</u>	<u>7,500</u>	<u>7,500</u>	<u>6,500</u>	<u>6,500</u>
Canada	12,709	13,196	13,468	11,350	11,350	13,000	9,000
<u>China</u>	<u>2,656</u>	<u>2,970</u>	<u>2,646</u>	<u>2,535</u>	<u>2,535</u>	<u>2,400</u>	<u>2,400</u>
Iran	2,300	1,600	1,400	1,500	1,500	1,900	1,900
Japan	144	205	214	206	206	230	230
Kazakstan	1,100	2,250	1,675	2,200	2,200	2,000	2,000
<u>Morocco</u>	<u>1,970</u>	<u>1,474</u>	<u>467</u>	<u>1,155</u>	<u>1,155</u>	<u>1,600</u>	<u>1,600</u>
Russia	9,800	10,600	14,100	19,500	19,500	16,000	16,000
<u>Saudi Arabia</u>	<u>400</u>	<u>400</u>	<u>100</u>	<u>100</u>	<u>100</u>	<u>100</u>	<u>100</u>
Syria	869	360	130	1,300	1,300	950	950
<u>Turkey</u>	<u>7,500</u>	<u>6,600</u>	<u>7,400</u>	<u>6,900</u>	<u>6,900</u>	<u>7,500</u>	<u>7,500</u>
Ukraine	5,870	6,425	6,872	10,200	10,200	8,500	9,000
<u>EU</u>	<u>51,907</u>	<u>48,929</u>	<u>51,659</u>	<u>48,156</u>	<u>48,156</u>	<u>50,640</u>	<u>50,640</u>
Eastern Europe	10,696	9,685	7,462	9,806	9,806	9,138	8,808
<u>Others</u>	<u>13,712</u>	<u>11,516</u>	<u>12,806</u>	<u>12,828</u>	<u>12,828</u>	<u>12,311</u>	<u>12,461</u>
Subtotal	128,340	121,752	127,758	135,810	135,810	133,319	129,639
United States	7,667	6,103	6,939	5,434	5,434	5,777	5,480
<u>WORLD TOTAL</u>	<u>136,007</u>	<u>127,855</u>	<u>134,697</u>	<u>141,244</u>	<u>141,244</u>	<u>139,096</u>	<u>135,119</u>
CONSUMPTION							
Algeria	1,475	1,060	550	650	650	650	650
<u>Australia</u>	<u>2,130</u>	<u>2,560</u>	<u>3,200</u>	<u>3,400</u>	<u>3,400</u>	<u>3,200</u>	<u>3,200</u>
Canada	11,336	11,419	11,965	11,050	10,875	11,450	9,300
<u>China</u>	<u>5,209</u>	<u>5,250</u>	<u>5,000</u>	<u>4,900</u>	<u>4,800</u>	<u>5,000</u>	<u>4,900</u>
Cyprus	350	558	425	425	425	425	425
<u>Iran</u>	<u>2,675</u>	<u>2,450</u>	<u>2,300</u>	<u>2,300</u>	<u>2,300</u>	<u>2,300</u>	<u>2,300</u>
Japan	1,860	1,819	1,700	1,750	1,750	1,800	1,800
<u>Mexico</u>	<u>585</u>	<u>653</u>	<u>850</u>	<u>850</u>	<u>850</u>	<u>850</u>	<u>850</u>
Morocco	2,601	2,345	1,350	1,850	1,750	1,900	2,000
<u>Russia</u>	<u>12,900</u>	<u>11,441</u>	<u>12,700</u>	<u>14,350</u>	<u>14,250</u>	<u>15,300</u>	<u>15,300</u>
Saudi Arabia	6,200	5,750	5,210	5,510	5,510	5,210	5,210
Syria	950	1,250	800	1,200	1,200	1,250	1,250
Turkey	6,800	6,700	6,900	6,600	6,600	6,900	6,900
<u>Ukraine</u>	<u>5,545</u>	<u>5,650</u>	<u>5,800</u>	<u>6,900</u>	<u>7,000</u>	<u>6,300</u>	<u>6,400</u>
EU	43,237	42,121	46,089	44,481	44,481	44,079	44,079
Eastern Europe	11,151	9,960	8,447	8,730	8,730	8,755	8,730
<u>Others</u>	<u>17,032</u>	<u>15,258</u>	<u>16,355</u>	<u>16,276</u>	<u>15,975</u>	<u>17,285</u>	<u>17,165</u>
Subtotal	132,036	126,244	129,641	131,222	130,546	132,654	130,459
United States	7,207	6,752	6,427	5,618	5,669	5,922	5,922
<u>WORLD TOTAL</u>	<u>139,243</u>	<u>132,996</u>	<u>136,068</u>	<u>136,840</u>	<u>136,215</u>	<u>138,576</u>	<u>136,381</u>
ENDING STOCKS							
Australia	465	387	783	483	683	383	583
<u>Canada</u>	<u>2,737</u>	<u>2,838</u>	<u>2,466</u>	<u>1,866</u>	<u>2,041</u>	<u>1,966</u>	<u>1,341</u>
Russia	382	289	1,529	4,629	4,629	3,379	2,879
<u>Turkey</u>	<u>735</u>	<u>564</u>	<u>972</u>	<u>772</u>	<u>772</u>	<u>722</u>	<u>722</u>
Ukraine	750	761	846	1,166	1,266	886	1,086
<u>EU</u>	<u>13,733</u>	<u>10,471</u>	<u>8,310</u>	<u>9,635</u>	<u>9,635</u>	<u>11,796</u>	<u>11,796</u>
<u>Others</u>	<u>6,960</u>	<u>5,971</u>	<u>5,114</u>	<u>6,166</u>	<u>6,316</u>	<u>6,141</u>	<u>6,006</u>
Subtotal	25,762	21,281	20,020	24,717	25,342	25,273	24,413
United States	3,084	2,424	2,314	2,021	2,021	1,985	1,688
<u>WORLD TOTAL</u>	<u>28,846</u>	<u>23,705</u>	<u>22,334</u>	<u>26,738</u>	<u>27,363</u>	<u>27,258</u>	<u>26,101</u>

REGIONAL BARLEY IMPORTS, PRODUCTION, CONSUMPTION AND STOCKS
THOUSAND METRIC TONS

	1998/99	1999/00	2000/01	2001/02 11-Jul	2001/02 12-Aug	2002/03 11-Jul	2002/03 12-Aug
IMPORTS							
North America 1/	794	879	825	645	645	800	675
Latin America 2/	<u>379</u>	<u>411</u>	<u>387</u>	<u>495</u>	<u>545</u>	<u>435</u>	<u>460</u>
EU	91	70	212	1,000	1,000	100	100
Other Wst. Eur. 3/	<u>310</u>	<u>546</u>	<u>478</u>	<u>435</u>	<u>435</u>	<u>425</u>	<u>425</u>
Former USSR	552	1,076	470	480	380	505	505
Eastern Europe 4/	<u>544</u>	<u>545</u>	<u>796</u>	<u>530</u>	<u>430</u>	<u>450</u>	<u>450</u>
Middle East 5/	8,039	8,957	6,964	7,200	7,100	7,100	7,300
North Africa 6/	<u>2,181</u>	<u>1,838</u>	<u>1,654</u>	<u>1,600</u>	<u>1,750</u>	<u>1,650</u>	<u>1,700</u>
Other Africa 7/	89	118	138	110	160	110	110
South Asia 8/	0	0	5	5	5	5	5
Other Asia 9/	3,953	4,120	4,231	4,200	4,100	4,400	4,400
Oceania 10/	<u>60</u>	<u>53</u>	<u>23</u>	<u>50</u>	<u>50</u>	<u>50</u>	<u>50</u>
PRODUCTION							
North America 1/	20,786	19,749	21,177	17,551	17,551	19,547	15,250
Latin America 2/	<u>1,392</u>	<u>1,145</u>	<u>1,508</u>	<u>1,246</u>	<u>1,246</u>	<u>1,485</u>	<u>1,485</u>
EU	51,907	48,929	51,659	48,156	48,156	50,640	50,640
Other Wst. Eur. 3/	<u>1,099</u>	<u>1,074</u>	<u>1,074</u>	<u>1,074</u>	<u>1,074</u>	<u>1,074</u>	<u>1,074</u>
Former USSR	21,080	22,433	26,482	36,101	36,101	29,969	30,619
Eastern Europe 4/	<u>10,696</u>	<u>9,685</u>	<u>7,462</u>	<u>9,806</u>	<u>9,806</u>	<u>9,138</u>	<u>8,808</u>
Middle East 5/	12,384	9,631	9,706	10,581	10,581	11,236	11,236
North Africa 6/	<u>3,245</u>	<u>2,651</u>	<u>1,085</u>	<u>2,134</u>	<u>2,134</u>	<u>2,475</u>	<u>2,475</u>
Other Africa 7/	1,612	1,543	1,831	1,707	1,707	1,687	1,687
South Asia 8/	<u>2,229</u>	<u>2,008</u>	<u>1,857</u>	<u>1,847</u>	<u>1,847</u>	<u>1,915</u>	<u>1,915</u>
Other Asia 9/	3,200	3,575	3,260	3,141	3,141	3,030	3,030
Oceania 10/	<u>6,377</u>	<u>5,432</u>	<u>7,596</u>	<u>7,900</u>	<u>7,900</u>	<u>6,900</u>	<u>6,900</u>
CONSUMPTION							
North America 1/	19,128	18,824	19,242	17,518	17,394	18,222	16,072
Latin America 2/	<u>1,746</u>	<u>1,523</u>	<u>1,670</u>	<u>1,535</u>	<u>1,535</u>	<u>1,625</u>	<u>1,680</u>
EU	43,237	42,121	46,089	44,481	44,481	44,079	44,079
Other Wst. Eur. 3/	<u>1,509</u>	<u>1,645</u>	<u>1,508</u>	<u>1,537</u>	<u>1,537</u>	<u>1,537</u>	<u>1,537</u>
Former USSR	23,939	21,667	23,726	27,200	27,110	27,010	27,210
Eastern Europe 4/	<u>11,151</u>	<u>9,960</u>	<u>8,447</u>	<u>8,730</u>	<u>8,730</u>	<u>8,755</u>	<u>8,730</u>
Middle East 5/	19,217	18,182	16,665	17,395	17,395	17,420	17,620
North Africa 6/	<u>5,129</u>	<u>4,497</u>	<u>3,033</u>	<u>3,720</u>	<u>3,720</u>	<u>3,745</u>	<u>3,895</u>
Other Africa 7/	1,702	1,664	2,008	1,810	1,860	1,802	1,802
South Asia 8/	<u>2,229</u>	<u>2,008</u>	<u>1,864</u>	<u>1,845</u>	<u>1,845</u>	<u>1,920</u>	<u>1,920</u>
Other Asia 9/	7,776	7,742	7,380	7,350	7,250	7,500	7,400
Oceania 10/	<u>2,582</u>	<u>2,960</u>	<u>3,600</u>	<u>3,850</u>	<u>3,850</u>	<u>3,650</u>	<u>3,650</u>
ENDING STOCKS							
North America 1/	5,876	5,317	4,882	4,006	4,181	4,090	3,168
Latin America 2/	<u>156</u>	<u>148</u>	<u>116</u>	<u>87</u>	<u>137</u>	<u>107</u>	<u>127</u>
EU	13,733	10,471	8,310	9,635	9,635	11,796	11,796
Other Wst. Eur. 3/	<u>479</u>	<u>446</u>	<u>457</u>	<u>429</u>	<u>429</u>	<u>391</u>	<u>391</u>
Former USSR	1,895	2,162	3,571	7,127	7,227	5,291	5,041
Eastern Europe 4/	<u>1,166</u>	<u>944</u>	<u>332</u>	<u>938</u>	<u>938</u>	<u>1,121</u>	<u>816</u>
Middle East 5/	3,348	2,192	2,630	2,491	2,491	2,332	2,332
North Africa 6/	<u>754</u>	<u>709</u>	<u>214</u>	<u>503</u>	<u>603</u>	<u>783</u>	<u>783</u>
Other Africa 7/	0	0	2	9	9	4	4
South Asia 8/	<u>20</u>	<u>20</u>	<u>17</u>	<u>24</u>	<u>24</u>	<u>24</u>	<u>24</u>
Other Asia 9/	904	856	966	952	952	882	982
Oceania 10/	<u>515</u>	<u>440</u>	<u>837</u>	<u>537</u>	<u>737</u>	<u>437</u>	<u>637</u>

NOTES: Footnotes appear on last page of this circular. Imports are reported on an international year basis. All other data are reported using marketing years.

**WORLD SORGHUM TRADE
OCTOBER/SEPTEMBER YEAR
THOUSAND METRIC TONS**

	1998/99	1999/00	2000/01	2001/02 11-Jul	2001/02 12-Aug	2002/03 11-Jul	2002/03 12-Aug
EXPORTS							
Argentina	519	671	566	450	450	300	300
<u>Australia</u>	<u>355</u>	<u>761</u>	<u>892</u>	<u>600</u>	<u>600</u>	<u>700</u>	<u>700</u>
China	17	18	19	20	20	20	20
<u>Sudan</u>	<u>167</u>	<u>150</u>	<u>10</u>	<u>0</u>	<u>0</u>	<u>0</u>	<u>0</u>
Others	173	119	78	65	100	35	35
Subtotal	1,231	1,719	1,565	1,135	1,170	1,055	1,055
United States	5,194	6,297	5,866	6,400	6,200	6,400	5,900
<u>WORLD TOTAL</u>	<u>6,425</u>	<u>8,016</u>	<u>7,431</u>	<u>7,535</u>	<u>7,370</u>	<u>7,455</u>	<u>6,955</u>
IMPORTS							
Brazil	21	258	141	150	150	300	300
<u>Israel</u>	<u>92</u>	<u>180</u>	<u>83</u>	<u>50</u>	<u>50</u>	<u>50</u>	<u>50</u>
Japan	2,453	2,206	1,983	2,000	2,000	1,800	1,800
<u>Mexico</u>	<u>3,291</u>	<u>4,773</u>	<u>4,892</u>	<u>5,000</u>	<u>4,800</u>	<u>5,000</u>	<u>4,500</u>
Sudan	0	0	10	0	0	0	0
<u>Taiwan</u>	<u>29</u>	<u>41</u>	<u>38</u>	<u>40</u>	<u>40</u>	<u>60</u>	<u>60</u>
EU	299	300	9	50	50	50	50
Subtotal	6,185	7,758	7,156	7,290	7,090	7,260	6,760
Other Countries	207	182	97	105	105	75	75
Unaccounted	33	76	178	140	175	120	120
<u>WORLD TOTAL</u>	<u>6,425</u>	<u>8,016</u>	<u>7,431</u>	<u>7,535</u>	<u>7,370</u>	<u>7,455</u>	<u>6,955</u>

WORLD SORGHUM PRODUCTION, CONSUMPTION AND STOCKS
LOCAL MARKETING YEARS
THOUSAND METRIC TONS

	1998/99	1999/00	2000/01	2001/02 11-Jul	2001/02 12-Aug	2002/03 11-Jul	2002/03 12-Aug
PRODUCTION							
Argentina	3,222	3,350	2,706	2,750	2,750	2,500	2,500
<u>Australia</u>	<u>1,891</u>	<u>2,116</u>	<u>2,109</u>	<u>1,777</u>	<u>1,777</u>	<u>2,200</u>	<u>2,200</u>
Burkina	1,300	1,000	1,000	1,200	1,200	1,200	1,200
<u>China</u>	<u>4,087</u>	<u>3,242</u>	<u>2,582</u>	<u>2,940</u>	<u>2,940</u>	<u>3,000</u>	<u>3,000</u>
Egypt	765	750	750	750	750	750	750
<u>Ethiopia</u>	<u>1,200</u>	<u>1,450</u>	<u>1,800</u>	<u>1,850</u>	<u>1,850</u>	<u>1,850</u>	<u>1,850</u>
India	8,710	8,860	7,716	7,500	7,500	8,500	8,000
<u>Mexico</u>	<u>6,400</u>	<u>6,394</u>	<u>5,665</u>	<u>6,500</u>	<u>6,500</u>	<u>6,850</u>	<u>6,850</u>
Niger	700	485	400	650	650	650	650
<u>Nigeria</u>	<u>7,300</u>	<u>7,500</u>	<u>7,600</u>	<u>7,800</u>	<u>7,800</u>	<u>7,800</u>	<u>7,800</u>
Sudan	4,500	2,350	2,500	3,770	3,770	3,770	3,770
<u>Tanzania; United Republic of</u>	<u>425</u>	<u>540</u>	<u>400</u>	<u>400</u>	<u>400</u>	<u>400</u>	<u>400</u>
Venezuela	370	460	390	390	390	390	390
<u>EU</u>	<u>663</u>	<u>557</u>	<u>640</u>	<u>640</u>	<u>640</u>	<u>625</u>	<u>625</u>
Others	4,672	4,476	4,530	4,507	4,514	4,524	4,524
Subtotal	46,205	43,530	40,788	43,424	43,431	45,009	44,509
United States	13,207	15,118	11,952	13,070	13,070	13,869	9,640
<u>WORLD TOTAL</u>	<u>59,412</u>	<u>58,648</u>	<u>52,740</u>	<u>56,494</u>	<u>56,501</u>	<u>58,878</u>	<u>54,149</u>
CONSUMPTION							
Argentina	2,550	2,500	2,480	2,300	2,300	2,200	2,200
<u>Australia</u>	<u>1,381</u>	<u>1,326</u>	<u>1,475</u>	<u>1,300</u>	<u>1,300</u>	<u>1,400</u>	<u>1,400</u>
Burkina	1,300	1,000	1,000	1,200	1,200	1,200	1,200
<u>China</u>	<u>4,134</u>	<u>3,319</u>	<u>2,561</u>	<u>2,900</u>	<u>2,900</u>	<u>2,950</u>	<u>2,950</u>
Egypt	765	750	750	750	750	750	750
<u>Ethiopia</u>	<u>1,200</u>	<u>1,500</u>	<u>1,824</u>	<u>1,850</u>	<u>1,850</u>	<u>1,850</u>	<u>1,850</u>
India	8,690	8,850	7,716	7,500	7,500	8,500	8,000
<u>Japan</u>	<u>2,500</u>	<u>2,200</u>	<u>2,045</u>	<u>2,000</u>	<u>2,000</u>	<u>1,800</u>	<u>1,800</u>
Mexico	9,746	11,100	11,050	11,400	11,300	11,800	11,500
<u>Niger</u>	<u>700</u>	<u>485</u>	<u>400</u>	<u>650</u>	<u>650</u>	<u>650</u>	<u>650</u>
Nigeria	7,318	7,500	7,600	7,800	7,800	7,800	7,800
<u>Sudan</u>	<u>3,888</u>	<u>2,650</u>	<u>2,510</u>	<u>3,700</u>	<u>3,700</u>	<u>3,700</u>	<u>3,700</u>
Venezuela	330	455	390	390	390	390	390
<u>Others</u>	<u>6,232</u>	<u>6,975</u>	<u>5,756</u>	<u>5,907</u>	<u>5,860</u>	<u>6,229</u>	<u>5,967</u>
Subtotal	50,734	50,610	47,557	49,647	49,500	51,219	50,157
United States	7,798	8,628	6,543	6,606	6,606	7,239	4,572
<u>WORLD TOTAL</u>	<u>58,532</u>	<u>59,238</u>	<u>54,100</u>	<u>56,253</u>	<u>56,106</u>	<u>58,458</u>	<u>54,729</u>
ENDING STOCKS							
Argentina	728	659	446	396	396	396	396
<u>Japan</u>	<u>346</u>	<u>352</u>	<u>290</u>	<u>290</u>	<u>290</u>	<u>290</u>	<u>290</u>
Mexico	1,214	1,281	788	888	788	938	638
<u>Others</u>	<u>1,439</u>	<u>839</u>	<u>847</u>	<u>924</u>	<u>924</u>	<u>1,014</u>	<u>1,014</u>
Subtotal	3,727	3,131	2,371	2,498	2,398	2,638	2,338
United States	1,655	1,661	1,061	1,175	1,429	1,455	909
<u>WORLD TOTAL</u>	<u>5,382</u>	<u>4,792</u>	<u>3,432</u>	<u>3,673</u>	<u>3,827</u>	<u>4,093</u>	<u>3,247</u>

**REGIONAL SORGHUM IMPORTS, PRODUCTION, CONSUMPTION AND STOCKS
THOUSAND METRIC TONS**

	1998/99	1999/00	2000/01	2001/02 11-Jul	2001/02 12-Aug	2002/03 11-Jul	2002/03 12-Aug
IMPORTS							
North America 1/	3,291	4,773	4,892	5,000	4,800	5,000	4,500
<u>Latin America 2/</u>	<u>56</u>	<u>299</u>	<u>148</u>	<u>160</u>	<u>160</u>	<u>310</u>	<u>310</u>
EU	299	300	9	50	50	50	50
<u>Other Wst. Eur. 3/</u>	<u>23</u>	<u>50</u>	<u>40</u>	<u>40</u>	<u>40</u>	<u>40</u>	<u>40</u>
Former USSR	0	0	0	0	0	0	0
<u>Eastern Europe 4/</u>	<u>0</u>	<u>0</u>	<u>0</u>	<u>0</u>	<u>0</u>	<u>0</u>	<u>0</u>
<u>Middle East 5/</u>	<u>92</u>	<u>180</u>	<u>83</u>	<u>50</u>	<u>50</u>	<u>50</u>	<u>50</u>
<u>North Africa 6/</u>	<u>112</u>	<u>0</u>	<u>0</u>	<u>0</u>	<u>0</u>	<u>0</u>	<u>0</u>
<u>Other Africa 7/</u>	<u>35</u>	<u>86</u>	<u>34</u>	<u>50</u>	<u>50</u>	<u>20</u>	<u>20</u>
<u>South Asia 8/</u>	<u>0</u>	<u>0</u>	<u>0</u>	<u>0</u>	<u>0</u>	<u>0</u>	<u>0</u>
<u>Other Asia 9/</u>	<u>2,484</u>	<u>2,252</u>	<u>2,047</u>	<u>2,045</u>	<u>2,045</u>	<u>1,865</u>	<u>1,865</u>
<u>Oceania 10/</u>	<u>0</u>	<u>0</u>	<u>0</u>	<u>0</u>	<u>0</u>	<u>0</u>	<u>0</u>
PRODUCTION							
North America 1/	19,607	21,512	17,617	19,570	19,570	20,719	16,490
<u>Latin America 2/</u>	<u>4,943</u>	<u>4,866</u>	<u>4,431</u>	<u>4,401</u>	<u>4,401</u>	<u>4,157</u>	<u>4,157</u>
EU	663	557	640	640	640	625	625
<u>Other Wst. Eur. 3/</u>	<u>0</u>	<u>0</u>	<u>0</u>	<u>0</u>	<u>0</u>	<u>0</u>	<u>0</u>
Former USSR	0	0	0	0	0	0	0
<u>Eastern Europe 4/</u>	<u>5</u>	<u>5</u>	<u>5</u>	<u>5</u>	<u>5</u>	<u>5</u>	<u>5</u>
<u>Middle East 5/</u>	<u>600</u>	<u>585</u>	<u>585</u>	<u>585</u>	<u>585</u>	<u>585</u>	<u>585</u>
<u>North Africa 6/</u>	<u>780</u>	<u>765</u>	<u>765</u>	<u>765</u>	<u>765</u>	<u>765</u>	<u>765</u>
<u>Other Africa 7/</u>	<u>17,506</u>	<u>15,513</u>	<u>15,669</u>	<u>17,690</u>	<u>17,697</u>	<u>17,701</u>	<u>17,701</u>
<u>South Asia 8/</u>	<u>8,938</u>	<u>9,090</u>	<u>7,946</u>	<u>7,730</u>	<u>7,730</u>	<u>8,730</u>	<u>8,230</u>
<u>Other Asia 9/</u>	<u>4,349</u>	<u>3,504</u>	<u>2,843</u>	<u>3,201</u>	<u>3,201</u>	<u>3,261</u>	<u>3,261</u>
<u>Oceania 10/</u>	<u>1,891</u>	<u>2,116</u>	<u>2,109</u>	<u>1,777</u>	<u>1,777</u>	<u>2,200</u>	<u>2,200</u>
CONSUMPTION							
North America 1/	17,544	19,728	17,593	18,006	17,906	19,039	16,072
<u>Latin America 2/</u>	<u>4,285</u>	<u>4,438</u>	<u>4,179</u>	<u>4,261</u>	<u>4,261</u>	<u>4,017</u>	<u>4,017</u>
EU	873	750	640	675	675	680	680
<u>Other Wst. Eur. 3/</u>	<u>23</u>	<u>50</u>	<u>40</u>	<u>40</u>	<u>40</u>	<u>40</u>	<u>40</u>
Former USSR	0	0	0	0	0	0	0
<u>Eastern Europe 4/</u>	<u>5</u>	<u>5</u>	<u>5</u>	<u>5</u>	<u>5</u>	<u>5</u>	<u>5</u>
<u>Middle East 5/</u>	<u>692</u>	<u>765</u>	<u>668</u>	<u>635</u>	<u>635</u>	<u>635</u>	<u>635</u>
<u>North Africa 6/</u>	<u>892</u>	<u>765</u>	<u>765</u>	<u>765</u>	<u>765</u>	<u>765</u>	<u>765</u>
<u>Other Africa 7/</u>	<u>16,942</u>	<u>15,822</u>	<u>15,664</u>	<u>17,645</u>	<u>17,652</u>	<u>17,651</u>	<u>17,651</u>
<u>South Asia 8/</u>	<u>8,918</u>	<u>9,080</u>	<u>7,946</u>	<u>7,730</u>	<u>7,730</u>	<u>8,730</u>	<u>8,230</u>
<u>Other Asia 9/</u>	<u>6,920</u>	<u>5,827</u>	<u>4,896</u>	<u>5,196</u>	<u>5,196</u>	<u>5,076</u>	<u>5,076</u>
<u>Oceania 10/</u>	<u>1,381</u>	<u>1,326</u>	<u>1,475</u>	<u>1,300</u>	<u>1,300</u>	<u>1,400</u>	<u>1,400</u>
ENDING STOCKS							
North America 1/	2,869	2,942	1,849	2,063	2,217	2,393	1,547
<u>Latin America 2/</u>	<u>792</u>	<u>724</u>	<u>500</u>	<u>450</u>	<u>450</u>	<u>450</u>	<u>450</u>
EU	46	40	39	49	49	39	39
<u>Other Wst. Eur. 3/</u>	<u>0</u>	<u>0</u>	<u>0</u>	<u>0</u>	<u>0</u>	<u>0</u>	<u>0</u>
Former USSR	0	0	0	0	0	0	0
<u>Eastern Europe 4/</u>	<u>0</u>	<u>0</u>	<u>0</u>	<u>0</u>	<u>0</u>	<u>0</u>	<u>0</u>
<u>Middle East 5/</u>	<u>13</u>	<u>13</u>	<u>13</u>	<u>13</u>	<u>13</u>	<u>13</u>	<u>13</u>
<u>North Africa 6/</u>	<u>40</u>	<u>40</u>	<u>40</u>	<u>40</u>	<u>40</u>	<u>40</u>	<u>40</u>
<u>Other Africa 7/</u>	<u>765</u>	<u>315</u>	<u>305</u>	<u>375</u>	<u>375</u>	<u>445</u>	<u>445</u>
<u>South Asia 8/</u>	<u>120</u>	<u>130</u>	<u>130</u>	<u>130</u>	<u>130</u>	<u>130</u>	<u>130</u>
<u>Other Asia 9/</u>	<u>577</u>	<u>488</u>	<u>450</u>	<u>470</u>	<u>470</u>	<u>500</u>	<u>500</u>
<u>Oceania 10/</u>	<u>160</u>	<u>100</u>	<u>106</u>	<u>83</u>	<u>83</u>	<u>83</u>	<u>83</u>

NOTES: Footnotes appear on last page of this circular. Imports are reported on an international year basis. All other data are reported using marketing years.

**WORLD OATS TRADE
OCTOBER/SEPTEMBER YEAR
THOUSAND METRIC TONS**

	1998/99	1999/00	2000/01	2001/02 11-Jul	2001/02 12-Aug	2002/03 11-Jul	2002/03 12-Aug
EXPORTS							
Argentina	1	16	19	20	20	20	20
<u>Australia</u>	<u>241</u>	<u>158</u>	<u>86</u>	<u>150</u>	<u>150</u>	<u>150</u>	<u>150</u>
Canada	1,155	1,383	1,402	900	900	1,300	1,300
<u>EU</u>	<u>511</u>	<u>481</u>	<u>740</u>	<u>500</u>	<u>500</u>	<u>550</u>	<u>550</u>
Eastern Europe	25	0	5	20	20	35	35
<u>Others</u>	<u>24</u>	<u>40</u>	<u>63</u>	<u>65</u>	<u>65</u>	<u>65</u>	<u>65</u>
Subtotal	1,957	2,078	2,315	1,655	1,655	2,120	2,120
United States	24	20	33	35	35	25	25
<u>WORLD TOTAL</u>	<u>1,981</u>	<u>2,098</u>	<u>2,348</u>	<u>1,690</u>	<u>1,690</u>	<u>2,145</u>	<u>2,145</u>
IMPORTS							
Canada	2	4	27	25	25	5	5
<u>Ecuador</u>	<u>5</u>	<u>5</u>	<u>0</u>	<u>5</u>	<u>10</u>	<u>5</u>	<u>5</u>
Japan	82	86	78	80	80	85	85
<u>Mexico</u>	<u>30</u>	<u>43</u>	<u>67</u>	<u>60</u>	<u>60</u>	<u>50</u>	<u>50</u>
Russia	20	25	4	0	0	0	0
<u>South Africa</u>	<u>0</u>	<u>0</u>	<u>24</u>	<u>30</u>	<u>30</u>	<u>30</u>	<u>30</u>
EU	9	33	25	10	10	10	10
<u>O.W. Europe</u>	<u>46</u>	<u>55</u>	<u>60</u>	<u>45</u>	<u>45</u>	<u>45</u>	<u>45</u>
Eastern Europe	0	0	24	6	6	5	5
<u>United States</u>	<u>1,599</u>	<u>1,675</u>	<u>1,825</u>	<u>1,300</u>	<u>1,300</u>	<u>1,750</u>	<u>1,750</u>
Subtotal	1,793	1,926	2,134	1,561	1,566	1,985	1,985
Other Countries	51	38	49	35	35	40	40
Unaccounted	137	134	165	94	89	120	120
<u>WORLD TOTAL</u>	<u>1,981</u>	<u>2,098</u>	<u>2,348</u>	<u>1,690</u>	<u>1,690</u>	<u>2,145</u>	<u>2,145</u>

WORLD OATS PRODUCTION, CONSUMPTION AND STOCKS
LOCAL MARKETING YEARS
THOUSAND METRIC TONS

	1998/99	1999/00	2000/01	2001/02 11-Jul	2001/02 12-Aug	2002/03 11-Jul	2002/03 12-Aug
PRODUCTION							
Argentina	383	555	642	678	678	580	580
<u>Australia</u>	<u>1,798</u>	<u>1,118</u>	<u>1,131</u>	<u>1,222</u>	<u>1,222</u>	<u>1,275</u>	<u>1,275</u>
Brazil	250	250	330	330	330	330	330
<u>Belarus</u>	<u>501</u>	<u>368</u>	<u>520</u>	<u>600</u>	<u>600</u>	<u>450</u>	<u>450</u>
Canada	3,958	3,641	3,389	2,770	2,770	4,000	3,800
Chile	201	248	345	280	280	285	285
China	650	600	600	600	600	600	600
<u>Hungary</u>	<u>132</u>	<u>175</u>	<u>100</u>	<u>150</u>	<u>150</u>	<u>150</u>	<u>150</u>
Kazakstan	75	200	80	218	218	100	100
<u>Mexico</u>	<u>100</u>	<u>100</u>	<u>100</u>	<u>100</u>	<u>100</u>	<u>100</u>	<u>100</u>
Poland	1,460	1,446	1,070	1,305	1,305	1,320	1,320
<u>Romania</u>	<u>350</u>	<u>375</u>	<u>350</u>	<u>350</u>	<u>350</u>	<u>350</u>	<u>350</u>
Russia	4,600	4,400	6,000	7,700	7,700	6,500	6,500
<u>Turkey</u>	<u>310</u>	<u>250</u>	<u>250</u>	<u>250</u>	<u>250</u>	<u>250</u>	<u>250</u>
Ukraine	778	760	881	1,100	1,100	1,000	1,000
EU	6,147	6,059	6,847	6,298	6,298	6,425	6,425
O.W. Europe	431	447	447	447	447	447	447
<u>Others</u>	<u>1,177</u>	<u>986</u>	<u>935</u>	<u>990</u>	<u>990</u>	<u>1,008</u>	<u>1,053</u>
Subtotal	23,301	21,978	24,017	25,388	25,388	25,170	25,015
United States	2,409	2,122	2,171	1,696	1,696	2,142	2,070
<u>WORLD TOTAL</u>	<u>25,710</u>	<u>24,100</u>	<u>26,188</u>	<u>27,084</u>	<u>27,084</u>	<u>27,312</u>	<u>27,085</u>
CONSUMPTION							
Argentina	385	500	650	650	650	600	600
<u>Australia</u>	<u>1,548</u>	<u>982</u>	<u>1,046</u>	<u>1,125</u>	<u>1,125</u>	<u>1,100</u>	<u>1,100</u>
Brazil	250	257	345	345	345	345	345
<u>Canada</u>	<u>2,553</u>	<u>2,263</u>	<u>2,158</u>	<u>2,100</u>	<u>2,100</u>	<u>2,300</u>	<u>2,150</u>
Chile	203	225	325	250	250	300	300
<u>China</u>	<u>600</u>	<u>600</u>	<u>600</u>	<u>600</u>	<u>600</u>	<u>600</u>	<u>600</u>
Hungary	132	175	100	125	125	125	125
<u>Kazakstan</u>	<u>55</u>	<u>180</u>	<u>79</u>	<u>200</u>	<u>200</u>	<u>95</u>	<u>95</u>
Mexico	130	143	170	160	160	150	150
Poland	1,435	1,446	1,075	1,250	1,250	1,325	1,325
Romania	350	375	350	350	350	350	350
<u>Russia</u>	<u>5,570</u>	<u>5,378</u>	<u>5,525</u>	<u>7,100</u>	<u>7,100</u>	<u>6,900</u>	<u>6,900</u>
Ukraine	890	720	840	1,040	1,040	950	950
EU	5,684	5,568	6,289	5,651	5,651	5,749	5,749
O.W. Europe	486	505	505	495	495	530	530
<u>Others</u>	<u>2,196</u>	<u>1,808</u>	<u>1,970</u>	<u>1,943</u>	<u>1,975</u>	<u>2,148</u>	<u>2,198</u>
Subtotal	22,467	21,125	22,027	23,384	23,416	23,567	23,467
United States	4,133	3,872	4,021	3,480	3,448	3,857	3,858
<u>WORLD TOTAL</u>	<u>26,600</u>	<u>24,997</u>	<u>26,048</u>	<u>26,864</u>	<u>26,864</u>	<u>27,424</u>	<u>27,325</u>
ENDING STOCKS							
	0	0	0	0	0	0	0
<u>Australia</u>	<u>216</u>	<u>217</u>	<u>216</u>	<u>163</u>	<u>163</u>	<u>188</u>	<u>188</u>
Canada	1,088	1,122	854	384	384	689	639
<u>Russia</u>	<u>1,053</u>	<u>100</u>	<u>579</u>	<u>1,179</u>	<u>1,179</u>	<u>779</u>	<u>779</u>
EU	723	758	709	866	866	952	952
<u>Others</u>	<u>426</u>	<u>489</u>	<u>516</u>	<u>641</u>	<u>641</u>	<u>533</u>	<u>528</u>
Subtotal	3,506	2,686	2,874	3,233	3,233	3,141	3,086
United States	1,181	1,104	1,056	917	917	897	824
<u>WORLD TOTAL</u>	<u>4,687</u>	<u>3,790</u>	<u>3,930</u>	<u>4,150</u>	<u>4,150</u>	<u>4,038</u>	<u>3,910</u>

REGIONAL OAT IMPORTS, PRODUCTION, CONSUMPTION AND STOCKS
THOUSAND METRIC TONS

	1998/99	1999/00	2000/01	2001/02 11-Jul	2001/02 12-Aug	2002/03 11-Jul	2002/03 12-Aug
IMPORTS							
North America 1/	1,631	1,722	1,919	1,385	1,385	1,805	1,805
<u>Latin America 2/</u>	<u>20</u>	<u>23</u>	<u>23</u>	<u>30</u>	<u>35</u>	<u>30</u>	<u>30</u>
EU	9	33	25	10	10	10	10
<u>Other Wst. Eur. 3/</u>	<u>46</u>	<u>55</u>	<u>60</u>	<u>45</u>	<u>45</u>	<u>45</u>	<u>45</u>
Former USSR	20	40	15	0	0	0	0
<u>Eastern Europe 4/</u>	<u>0</u>	<u>0</u>	<u>24</u>	<u>6</u>	<u>6</u>	<u>5</u>	<u>5</u>
Middle East 5/	0	0	6	5	5	5	5
<u>North Africa 6/</u>	<u>34</u>	<u>5</u>	<u>9</u>	<u>5</u>	<u>5</u>	<u>10</u>	<u>10</u>
Other Africa 7/	0	0	24	30	30	30	30
South Asia 8/	0	0	0	0	0	0	0
Other Asia 9/	82	86	78	80	80	85	85
<u>Oceania 10/</u>	<u>2</u>	<u>0</u>	<u>0</u>	<u>0</u>	<u>0</u>	<u>0</u>	<u>0</u>
PRODUCTION							
North America 1/	6,467	5,863	5,660	4,566	4,566	6,242	5,970
<u>Latin America 2/</u>	<u>869</u>	<u>1,088</u>	<u>1,352</u>	<u>1,323</u>	<u>1,323</u>	<u>1,230</u>	<u>1,230</u>
EU	6,147	6,059	6,847	6,298	6,298	6,425	6,425
<u>Other Wst. Eur. 3/</u>	<u>431</u>	<u>447</u>	<u>447</u>	<u>447</u>	<u>447</u>	<u>447</u>	<u>447</u>
Former USSR	6,289	5,948	7,775	9,871	9,871	8,306	8,306
<u>Eastern Europe 4/</u>	<u>2,497</u>	<u>2,535</u>	<u>1,966</u>	<u>2,312</u>	<u>2,312</u>	<u>2,335</u>	<u>2,380</u>
Middle East 5/	310	250	250	250	250	250	250
<u>North Africa 6/</u>	<u>130</u>	<u>70</u>	<u>38</u>	<u>74</u>	<u>74</u>	<u>80</u>	<u>80</u>
Other Africa 7/	45	45	45	45	45	45	45
South Asia 8/	0	0	0	0	0	0	0
Other Asia 9/	652	602	602	601	601	602	602
<u>Oceania 10/</u>	<u>1,873</u>	<u>1,193</u>	<u>1,206</u>	<u>1,297</u>	<u>1,297</u>	<u>1,350</u>	<u>1,350</u>
CONSUMPTION							
North America 1/	6,816	6,278	6,349	5,740	5,708	6,307	6,158
<u>Latin America 2/</u>	<u>888</u>	<u>1,033</u>	<u>1,361</u>	<u>1,295</u>	<u>1,300</u>	<u>1,295</u>	<u>1,295</u>
EU	5,684	5,568	6,289	5,651	5,651	5,749	5,749
<u>Other Wst. Eur. 3/</u>	<u>486</u>	<u>505</u>	<u>505</u>	<u>495</u>	<u>495</u>	<u>530</u>	<u>530</u>
Former USSR	7,351	6,879	7,238	9,193	9,193	8,643	8,643
<u>Eastern Europe 4/</u>	<u>2,482</u>	<u>2,545</u>	<u>1,963</u>	<u>2,213</u>	<u>2,213</u>	<u>2,315</u>	<u>2,365</u>
Middle East 5/	310	250	250	250	250	260	260
<u>North Africa 6/</u>	<u>164</u>	<u>75</u>	<u>46</u>	<u>81</u>	<u>81</u>	<u>90</u>	<u>90</u>
Other Africa 7/	45	45	69	75	75	75	75
South Asia 8/	0	0	0	0	0	0	0
Other Asia 9/	686	685	680	684	684	685	685
<u>Oceania 10/</u>	<u>1,623</u>	<u>1,057</u>	<u>1,121</u>	<u>1,200</u>	<u>1,200</u>	<u>1,175</u>	<u>1,175</u>
ENDING STOCKS							
North America 1/	2,276	2,233	1,913	1,304	1,304	1,589	1,466
<u>Latin America 2/</u>	<u>73</u>	<u>130</u>	<u>113</u>	<u>141</u>	<u>141</u>	<u>76</u>	<u>76</u>
EU	723	758	709	866	866	952	952
<u>Other Wst. Eur. 3/</u>	<u>136</u>	<u>133</u>	<u>123</u>	<u>120</u>	<u>120</u>	<u>82</u>	<u>82</u>
Former USSR	1,098	161	669	1,282	1,282	890	890
<u>Eastern Europe 4/</u>	<u>57</u>	<u>47</u>	<u>75</u>	<u>160</u>	<u>160</u>	<u>150</u>	<u>145</u>
Middle East 5/	0	0	0	5	5	0	0
<u>North Africa 6/</u>	<u>0</u>	<u>0</u>	<u>1</u>	<u>1</u>	<u>1</u>	<u>1</u>	<u>1</u>
Other Africa 7/	0	0	0	0	0	0	0
South Asia 8/	0	0	0	0	0	0	0
Other Asia 9/	108	111	111	108	108	110	110
<u>Oceania 10/</u>	<u>216</u>	<u>217</u>	<u>216</u>	<u>163</u>	<u>163</u>	<u>188</u>	<u>188</u>

NOTES: Footnotes appear on last page of this circular. Imports are reported on an international year basis. All other data are reported using marketing years.

**WORLD RYE TRADE
OCTOBER/SEPTEMBER YEAR
THOUSAND METRIC TONS**

	1998/99	1999/00	2000/01	2001/02 11-Jul	2001/02 12-Aug	2002/03 11-Jul	2002/03 12-Aug
EXPORTS							
Canada	77	78	87	60	60	50	50
<u>Russia</u>	<u>0</u>	<u>0</u>	<u>0</u>	<u>5</u>	<u>5</u>	<u>5</u>	<u>5</u>
Ukraine	278	73	1	350	350	200	200
<u>EU</u>	<u>1,161</u>	<u>2,144</u>	<u>940</u>	<u>800</u>	<u>800</u>	<u>900</u>	<u>900</u>
Eastern Europe	104	25	2	25	35	25	25
<u>Others</u>	<u>53</u>	<u>0</u>	<u>57</u>	<u>0</u>	<u>25</u>	<u>0</u>	<u>0</u>
Subtotal	1,673	2,320	1,087	1,240	1,275	1,180	1,180
United States	2	10	8	4	4	4	4
<u>WORLD TOTAL</u>	<u>1,675</u>	<u>2,330</u>	<u>1,095</u>	<u>1,244</u>	<u>1,279</u>	<u>1,184</u>	<u>1,184</u>
IMPORTS							
Belarus	93	220	10	50	50	100	100
<u>China</u>	<u>367</u>	<u>25</u>	<u>0</u>	<u>25</u>	<u>25</u>	<u>25</u>	<u>25</u>
Japan	391	397	337	350	350	400	400
<u>Korea, South</u>	<u>175</u>	<u>476</u>	<u>57</u>	<u>75</u>	<u>75</u>	<u>150</u>	<u>150</u>
Russia	306	416	63	0	0	0	0
<u>EU</u>	<u>2</u>	<u>0</u>	<u>1</u>	<u>300</u>	<u>300</u>	<u>5</u>	<u>5</u>
Eastern Europe	8	323	420	150	150	150	150
<u>United States</u>	<u>75</u>	<u>76</u>	<u>81</u>	<u>150</u>	<u>150</u>	<u>125</u>	<u>125</u>
Subtotal	1,417	1,933	969	1,100	1,100	955	955
Other Countries	42	254	99	96	116	96	96
Unaccounted	216	143	27	48	63	128	128
<u>WORLD TOTAL</u>	<u>1,675</u>	<u>2,330</u>	<u>1,095</u>	<u>1,244</u>	<u>1,279</u>	<u>1,184</u>	<u>1,184</u>

**WORLD RYE PRODUCTION, CONSUMPTION AND STOCKS
LOCAL MARKETING YEARS
THOUSAND METRIC TONS**

	1998/99	1999/00	2000/01	2001/02 11-Jul	2001/02 12-Aug	2002/03 11-Jul	2002/03 12-Aug
PRODUCTION							
Belarus	1,384	929	1,450	1,600	1,600	1,600	1,700
<u>Canada</u>	<u>398</u>	<u>387</u>	<u>260</u>	<u>190</u>	<u>190</u>	<u>220</u>	<u>220</u>
Czech Republic	261	200	150	154	154	148	148
<u>Latvia</u>	<u>120</u>	<u>89</u>	<u>111</u>	<u>100</u>	<u>100</u>	<u>110</u>	<u>110</u>
Lithuania	349	261	311	234	234	234	234
<u>Poland</u>	<u>5,664</u>	<u>5,181</u>	<u>4,003</u>	<u>4,863</u>	<u>4,863</u>	<u>4,800</u>	<u>4,200</u>
Russia	3,300	4,800	5,450	6,600	6,600	6,500	6,500
<u>Turkey</u>	<u>237</u>	<u>250</u>	<u>250</u>	<u>250</u>	<u>250</u>	<u>250</u>	<u>250</u>
Ukraine	1,140	919	966	1,800	1,800	1,400	1,400
<u>EU</u>	<u>6,345</u>	<u>5,488</u>	<u>5,411</u>	<u>6,276</u>	<u>6,276</u>	<u>5,585</u>	<u>5,585</u>
O.W. Europe	36	31	31	31	31	31	31
<u>Others</u>	<u>533</u>	<u>484</u>	<u>537</u>	<u>597</u>	<u>597</u>	<u>496</u>	<u>496</u>
Subtotal	19,767	19,019	18,930	22,695	22,695	21,374	20,874
United States	309	280	213	177	177	191	191
<u>WORLD TOTAL</u>	<u>20,076</u>	<u>19,299</u>	<u>19,143</u>	<u>22,872</u>	<u>22,872</u>	<u>21,565</u>	<u>21,065</u>
CONSUMPTION							
Belarus	1,477	1,149	1,410	1,650	1,625	1,700	1,700
<u>Canada</u>	<u>228</u>	<u>310</u>	<u>270</u>	<u>169</u>	<u>169</u>	<u>173</u>	<u>173</u>
China	367	25	0	25	25	25	25
<u>Czech Republic</u>	<u>267</u>	<u>220</u>	<u>200</u>	<u>200</u>	<u>200</u>	<u>200</u>	<u>200</u>
Japan	391	397	337	350	350	400	400
<u>Korea, South</u>	<u>175</u>	<u>476</u>	<u>57</u>	<u>75</u>	<u>75</u>	<u>150</u>	<u>150</u>
Latvia	150	89	110	100	100	110	110
<u>Lithuania</u>	<u>330</u>	<u>300</u>	<u>330</u>	<u>270</u>	<u>270</u>	<u>270</u>	<u>270</u>
Poland	5,704	5,486	4,580	4,825	4,725	4,900	4,400
<u>Russia</u>	<u>5,006</u>	<u>5,264</u>	<u>5,550</u>	<u>5,800</u>	<u>5,800</u>	<u>6,000</u>	<u>6,000</u>
Turkey	184	396	250	250	270	250	250
<u>Ukraine</u>	<u>1,062</u>	<u>852</u>	<u>960</u>	<u>1,350</u>	<u>1,350</u>	<u>1,200</u>	<u>1,200</u>
EU	3,984	4,100	4,320	4,350	4,350	4,100	4,150
O.W. Europe	69	61	55	52	52	52	52
Others	512	644	793	671	701	699	679
Subtotal	19,906	19,769	19,222	20,137	20,062	20,229	19,759
United States	349	382	295	339	314	287	287
<u>WORLD TOTAL</u>	<u>20,255</u>	<u>20,151</u>	<u>19,517</u>	<u>20,476</u>	<u>20,376</u>	<u>20,516</u>	<u>20,046</u>
ENDING STOCKS							
Canada	166	161	77	43	43	45	45
<u>Poland</u>	<u>405</u>	<u>375</u>	<u>169</u>	<u>282</u>	<u>382</u>	<u>257</u>	<u>257</u>
Russia	200	200	293	1,088	1,088	1,583	1,583
<u>Ukraine</u>	<u>200</u>	<u>100</u>	<u>122</u>	<u>227</u>	<u>227</u>	<u>232</u>	<u>232</u>
EU	5,292	4,621	4,440	5,886	5,886	6,476	6,446
<u>Others</u>	<u>205</u>	<u>181</u>	<u>173</u>	<u>160</u>	<u>160</u>	<u>142</u>	<u>242</u>
Subtotal	6,468	5,638	5,274	7,686	7,786	8,735	8,805
United States	62	40	30	14	14	14	14
<u>WORLD TOTAL</u>	<u>6,530</u>	<u>5,678</u>	<u>5,304</u>	<u>7,700</u>	<u>7,800</u>	<u>8,749</u>	<u>8,819</u>

REGIONAL RYE IMPORTS, PRODUCTION, CONSUMPTION AND STOCKS
THOUSAND METRIC TONS

	1998/99	1999/00	2000/01	2001/02 11-Jul	2001/02 12-Aug	2002/03 11-Jul	2002/03 12-Aug
IMPORTS							
North America 1/	76	81	86	155	155	130	130
<u>Latin America 2/</u>	<u>0</u>	<u>0</u>	<u>0</u>	<u>0</u>	<u>0</u>	<u>0</u>	<u>0</u>
EU	2	0	1	300	300	5	5
<u>Other Wst. Eur. 3/</u>	<u>33</u>	<u>30</u>	<u>24</u>	<u>21</u>	<u>21</u>	<u>21</u>	<u>21</u>
Former USSR	407	713	143	120	120	170	170
<u>Eastern Europe 4/</u>	<u>8</u>	<u>323</u>	<u>420</u>	<u>150</u>	<u>150</u>	<u>150</u>	<u>150</u>
Middle East 5/	0	142	0	0	20	0	0
<u>North Africa 6/</u>	<u>0</u>	<u>0</u>	<u>0</u>	<u>0</u>	<u>0</u>	<u>0</u>	<u>0</u>
Other Africa 7/	0	0	0	0	0	0	0
<u>South Asia 8/</u>	<u>0</u>	<u>0</u>	<u>0</u>	<u>0</u>	<u>0</u>	<u>0</u>	<u>0</u>
Other Asia 9/	933	898	394	450	450	575	575
<u>Oceania 10/</u>	<u>0</u>	<u>0</u>	<u>0</u>	<u>0</u>	<u>0</u>	<u>0</u>	<u>0</u>
PRODUCTION							
North America 1/	707	667	473	367	367	411	411
<u>Latin America 2/</u>	<u>88</u>	<u>138</u>	<u>144</u>	<u>99</u>	<u>99</u>	<u>89</u>	<u>89</u>
EU	6,345	5,488	5,411	6,276	6,276	5,585	5,585
<u>Other Wst. Eur. 3/</u>	<u>36</u>	<u>31</u>	<u>31</u>	<u>31</u>	<u>31</u>	<u>31</u>	<u>31</u>
Former USSR	6,373	7,057	8,399	10,450	10,450	9,935	10,035
<u>Eastern Europe 4/</u>	<u>6,267</u>	<u>5,645</u>	<u>4,412</u>	<u>5,376</u>	<u>5,376</u>	<u>5,241</u>	<u>4,641</u>
Middle East 5/	237	250	250	250	250	250	250
<u>North Africa 6/</u>	<u>0</u>	<u>0</u>	<u>0</u>	<u>0</u>	<u>0</u>	<u>0</u>	<u>0</u>
Other Africa 7/	3	3	3	3	3	3	3
<u>South Asia 8/</u>	<u>0</u>	<u>0</u>	<u>0</u>	<u>0</u>	<u>0</u>	<u>0</u>	<u>0</u>
Other Asia 9/	0	0	0	0	0	0	0
<u>Oceania 10/</u>	<u>20</u>	<u>20</u>	<u>20</u>	<u>20</u>	<u>20</u>	<u>20</u>	<u>20</u>
CONSUMPTION							
North America 1/	577	692	565	508	483	460	460
<u>Latin America 2/</u>	<u>88</u>	<u>138</u>	<u>144</u>	<u>99</u>	<u>99</u>	<u>89</u>	<u>89</u>
EU	3,984	4,100	4,320	4,350	4,350	4,100	4,150
<u>Other Wst. Eur. 3/</u>	<u>69</u>	<u>61</u>	<u>55</u>	<u>52</u>	<u>52</u>	<u>52</u>	<u>52</u>
Former USSR	8,113	7,760	8,514	9,331	9,306	9,416	9,416
<u>Eastern Europe 4/</u>	<u>6,311</u>	<u>5,973</u>	<u>5,052</u>	<u>5,385</u>	<u>5,275</u>	<u>5,393</u>	<u>4,893</u>
Middle East 5/	184	396	250	250	270	250	250
<u>North Africa 6/</u>	<u>0</u>	<u>0</u>	<u>0</u>	<u>0</u>	<u>0</u>	<u>0</u>	<u>0</u>
Other Africa 7/	3	3	3	3	3	3	3
<u>South Asia 8/</u>	<u>0</u>	<u>0</u>	<u>0</u>	<u>0</u>	<u>0</u>	<u>0</u>	<u>0</u>
Other Asia 9/	933	898	394	450	450	575	575
<u>Oceania 10/</u>	<u>20</u>	<u>20</u>	<u>20</u>	<u>20</u>	<u>20</u>	<u>20</u>	<u>20</u>
ENDING STOCKS							
North America 1/	228	201	107	57	57	59	59
<u>Latin America 2/</u>	<u>0</u>	<u>0</u>	<u>0</u>	<u>0</u>	<u>0</u>	<u>0</u>	<u>0</u>
EU	5,292	4,621	4,440	5,886	5,886	6,476	6,446
<u>Other Wst. Eur. 3/</u>	<u>0</u>	<u>0</u>	<u>0</u>	<u>0</u>	<u>0</u>	<u>0</u>	<u>0</u>
Former USSR	524	400	510	1,394	1,394	1,878	1,978
<u>Eastern Europe 4/</u>	<u>466</u>	<u>436</u>	<u>227</u>	<u>343</u>	<u>443</u>	<u>316</u>	<u>316</u>
Middle East 5/	0	0	0	0	0	0	0
<u>North Africa 6/</u>	<u>0</u>	<u>0</u>	<u>0</u>	<u>0</u>	<u>0</u>	<u>0</u>	<u>0</u>
Other Africa 7/	0	0	0	0	0	0	0
<u>South Asia 8/</u>	<u>0</u>	<u>0</u>	<u>0</u>	<u>0</u>	<u>0</u>	<u>0</u>	<u>0</u>
Other Asia 9/	20	20	20	20	20	20	20
<u>Oceania 10/</u>	<u>0</u>	<u>0</u>	<u>0</u>	<u>0</u>	<u>0</u>	<u>0</u>	<u>0</u>

NOTES: Footnotes appear on last page of this circular. Imports are reported on an international year basis. All other data are reported using marketing years.



HISTORICAL DATA SERIES FOR SELECTED REGIONS AND COUNTRIES

CONTENTS

European Union: Grain Supply and Demand	34
China: Grain Supply and Demand	35
Eastern Europe Grain: Supply and Demand	36
Former Soviet Union: Grain Supply and Demand	37
Wheat Supply and Demand: Selected Exporters	39
Corn Supply and Demand: Selected Exporters.....	40
Barley & Sorghum Supply and Demand: Selected Exporters.....	41
U.S. Grains Supply and Demand	42
Total Wheat and Coarse Grains: Supply and Demand	43
World Wheat and Coarse Grains: Supply and Demand	44
World Corn and Barley: Supply and Demand	45
World Rice: Supply and Demand	46

**EUROPEAN UNION: GRAIN SUPPLY AND DEMAND
WHEAT AND COARSE GRAINS
MILLION METRIC TONS/HECTARES**

	Area		Production	--Imports--		--Exports--		Domestic	Domestic	Ending
	Harvested	Yield		Mkt Yr.	Trade Yr.	Mkt Yr.	Trade Yr.	Feed Use	Total Use	
WHEAT										
1991/92	17.5	5.3	93.7	1.2	1.2	22.9	22.9	24.4	65.9	24.0
1992/93	17.4	5.0	87.7	1.4	1.4	23.7	23.7	25.0	67.2	22.3
1993/94	15.7	5.3	82.9	1.7	1.7	20.1	20.1	29.8	72.3	14.6
1994/95	15.8	5.4	84.5	2.1	2.1	17.1	17.1	32.2	74.9	9.2
1995/96	16.2	5.3	86.2	2.5	2.5	13.2	13.2	34.7	77.2	7.4
1996/97	16.7	5.9	98.5	2.5	2.5	14.2	14.2	38.5	82.8	11.4
1997/98	17.1	5.5	94.2	3.9	3.9	14.2	14.2	39.6	82.7	12.5
1998/99	17.1	6.0	103.1	3.8	3.8	14.6	14.6	44.1	88.1	16.7
1999/00	16.9	5.7	96.4	4.2	4.2	17.4	17.4	42.7	87.2	12.6
2000/01	17.8	5.9	104.8	3.2	3.2	15.2	15.2	46.8	92.0	13.4
2001/02	16.5	5.6	91.7	9.0	9.0	10.0	10.0	47.2	91.9	12.2
2002/03	17.9	6.0	107.7	3.5	3.5	15.0	15.0	48.8	94.6	13.7
COARSE GRAINS										
1991/92	21.4	4.7	100.3	2.1	2.1	10.8	12.0	63.1	86.1	20.9
1992/93	20.4	4.4	90.5	2.2	2.1	10.9	8.9	59.8	82.3	20.3
1993/94	19.0	4.9	92.5	3.0	2.8	10.0	9.9	65.0	87.8	18.0
1994/95	18.8	4.6	86.6	4.7	4.7	7.9	8.1	65.2	88.6	12.9
1995/96	18.5	4.8	88.5	5.8	5.8	4.6	4.4	69.3	92.5	10.0
1996/97	19.6	5.3	103.8	2.7	2.7	8.6	7.6	72.5	95.9	12.0
1997/98	20.5	5.3	109.4	2.3	2.4	4.0	4.7	72.7	98.1	21.7
1998/99	20.1	5.3	105.5	3.1	3.1	9.2	10.8	74.0	97.5	23.5
1999/00	19.0	5.4	102.1	2.7	2.7	13.0	13.4	72.0	95.8	19.5
2000/01	19.3	5.6	107.2	3.0	3.1	10.1	8.1	78.2	102.8	16.9
2001/02	19.5	5.4	105.7	4.3	4.1	4.8	5.4	77.9	102.3	19.7
2002/03	19.4	5.6	108.1	2.7	2.7	6.1	6.0	76.4	102.0	22.5
WHEAT AND COARSE GRAINS										
1991/92	38.9	5.0	194.0	3.3	3.3	33.7	34.9	87.5	152.0	45.0
1992/93	37.9	4.7	178.2	3.6	3.6	34.6	32.6	84.8	149.5	42.6
1993/94	34.7	5.1	175.4	4.7	4.5	30.0	30.0	94.7	160.1	32.6
1994/95	34.6	5.0	171.2	6.8	6.8	25.0	25.2	97.4	163.5	22.1
1995/96	34.6	5.0	174.7	8.3	8.3	17.9	17.6	104.1	169.8	17.4
1996/97	36.4	5.6	202.3	5.2	5.2	22.8	21.8	110.9	178.7	23.5
1997/98	37.6	5.4	203.5	6.2	6.3	18.2	18.9	112.3	180.8	34.2
1998/99	37.2	5.6	208.6	6.9	6.9	23.8	25.4	118.1	185.7	40.2
1999/00	36.0	5.5	198.5	6.8	6.9	30.4	30.8	114.7	183.0	32.2
2000/01	37.1	5.7	212.0	6.2	6.3	25.3	23.3	125.0	194.8	30.3
2001/02	36.1	5.5	197.4	13.3	13.1	14.8	15.4	125.0	194.2	31.9
2002/03	37.3	5.8	215.8	6.2	6.2	21.1	21.0	125.2	196.6	36.2

Notes:

Trade statistics are on a July/June year for wheat and an October/September year for coarse grains.
Imports and exports exclude Intra-EU15 trade.

**CHINA: GRAIN SUPPLY AND DEMAND
WHEAT AND COARSE GRAINS
MILLION METRIC TONS/HECTARES**

	Area Harvested	Yield	Production	--Imports-- Mkt Yr.	Trade Yr.	--Exports-- Mkt Yr.	Trade Yr.	Domestic Feed Use	Domestic Total Use	Ending Stocks
WHEAT										
1991/92	30.9	3.1	96.0	15.9	15.9	0.0	0.0	5.0	107.8	51.7
1992/93	30.5	3.3	101.6	6.7	6.7	0.2	0.2	2.8	106.6	53.2
1993/94	30.2	3.5	106.4	4.3	4.3	0.6	0.6	2.7	107.7	55.6
1994/95	29.0	3.4	99.3	10.3	10.3	0.4	0.4	3.0	109.0	55.7
1995/96	28.9	3.5	102.2	12.5	12.5	0.5	0.5	3.2	110.1	59.8
1996/97	29.6	3.7	110.6	2.7	2.7	1.0	1.0	3.4	111.3	60.9
1997/98	30.1	4.1	123.3	1.9	1.9	1.2	1.2	4.9	112.8	72.1
1998/99	29.8	3.7	109.7	0.8	0.8	0.5	0.5	5.0	112.0	70.1
1999/00	28.9	3.9	113.9	1.0	1.0	0.5	0.5	6.5	113.1	71.4
2000/01	26.7	3.7	99.6	0.2	0.2	0.6	0.6	8.0	114.1	56.5
2001/02	24.7	3.8	93.9	1.3	1.3	1.5	1.5	7.0	112.6	37.5
2002/03	24.5	3.8	92.0	2.0	2.0	1.0	1.0	5.0	110.0	20.5
COARSE GRAINS										
1991/92	27.2	4.1	112.3	1.1	1.1	10.4	10.4	60.5	97.8	91.1
1992/93	26.3	4.2	109.3	0.6	0.6	13.0	13.0	64.4	102.6	85.4
1993/94	25.8	4.5	117.2	1.3	1.3	12.0	12.0	70.2	109.3	82.5
1994/95	26.1	4.4	114.3	6.4	6.4	1.6	1.6	79.6	118.0	83.6
1995/96	27.3	4.6	124.5	3.0	3.0	0.2	0.2	82.4	120.2	90.6
1996/97	29.1	4.9	141.3	2.1	2.1	4.0	4.0	86.6	126.3	103.8
1997/98	28.1	4.1	114.7	1.6	1.6	6.2	6.2	90.7	125.1	88.8
1998/99	29.1	4.9	143.5	2.6	2.6	3.4	3.4	91.9	128.9	102.6
1999/00	29.6	4.6	137.2	2.3	2.3	10.0	10.0	93.2	129.5	102.7
2000/01	26.5	4.3	114.0	2.6	2.6	7.3	7.3	95.4	130.3	81.6
2001/02	27.6	4.4	122.4	2.4	2.4	7.0	7.0	99.2	134.7	64.7
2002/03	28.2	4.7	133.4	2.6	2.6	8.0	8.0	101.3	137.9	54.9
WHEAT AND COARSE GRAINS										
1991/92	58.2	3.6	208.3	16.9	16.9	10.5	10.4	65.5	205.6	142.8
1992/93	56.8	3.7	210.9	7.4	7.4	13.2	13.2	67.1	209.3	138.6
1993/94	56.0	4.0	223.6	5.6	5.6	12.7	12.7	72.9	217.0	138.1
1994/95	55.1	3.9	213.6	16.6	16.6	2.0	2.0	82.6	227.0	139.3
1995/96	56.2	4.0	226.7	15.5	15.5	0.7	0.7	85.6	230.4	150.5
1996/97	58.7	4.3	251.9	4.8	4.8	5.0	5.0	90.0	237.6	164.7
1997/98	58.1	4.1	238.0	3.5	3.5	7.4	7.4	95.6	237.8	160.9
1998/99	58.8	4.3	253.2	3.4	3.4	3.9	3.9	96.9	240.9	172.7
1999/00	58.4	4.3	251.1	3.3	3.3	10.5	10.5	99.7	242.6	174.1
2000/01	53.1	4.0	213.6	2.8	2.8	7.9	7.9	103.4	244.4	138.1
2001/02	52.3	4.1	216.3	3.7	3.7	8.5	8.5	106.2	247.3	102.3
2002/03	52.7	4.3	225.4	4.6	4.6	9.0	9.0	106.3	247.9	75.4

Notes:

Trade statistics are on a July/June year for wheat and an October/September year for coarse grains.

**EASTERN EUROPE: GRAIN SUPPLY AND DEMAND
WHEAT AND COARSE GRAINS
MILLION METRIC TONS/HECTARES**

	Area Harvested	Yield	Production	--Imports-- Mkt Yr.	Trade Yr.	--Exports-- Mkt Yr.	Trade Yr.	Domestic Feed Use	Domestic Total Use	Ending Stocks
WHEAT										
1991/92	9.9	3.9	38.5	1.4	1.4	2.3	2.4	14.6	36.3	5.8
1992/93	8.1	3.2	26.2	3.5	3.5	1.6	1.5	11.5	30.0	4.2
1993/94	9.7	3.1	30.0	2.5	2.5	0.8	0.8	10.1	30.3	5.5
1994/95	10.0	3.4	33.7	2.1	2.1	4.1	4.1	10.7	31.2	6.1
1995/96	9.7	3.6	34.9	2.4	2.4	6.0	6.0	10.6	30.1	7.2
1996/97	8.7	3.0	26.0	4.4	4.4	1.8	1.8	11.5	29.6	6.2
1997/98	9.9	3.5	34.3	2.0	2.0	3.1	3.1	12.0	31.6	7.8
1998/99	9.6	3.5	33.9	2.1	2.1	4.2	4.2	12.1	31.9	7.7
1999/00	8.2	3.4	28.2	1.6	1.6	3.4	3.4	10.5	29.6	4.5
2000/01	9.3	3.1	28.7	2.9	2.9	2.3	2.3	9.9	29.0	4.7
2001/02	10.1	3.5	35.2	1.7	1.7	4.2	4.2	11.2	31.2	6.3
2002/03	9.6	3.2	30.5	2.0	2.0	2.9	2.9	10.1	30.3	5.5
COARSE GRAINS										
1991/92	16.5	3.9	64.7	0.9	0.9	4.3	4.3	44.1	58.9	7.9
1992/93	16.8	2.6	43.4	5.0	5.1	1.8	1.8	38.6	51.2	3.2
1993/94	16.5	2.7	44.9	2.8	2.8	1.1	1.1	35.4	46.0	3.8
1994/95	16.7	2.8	46.9	2.0	2.0	1.9	1.9	37.5	48.0	2.8
1995/96	16.2	3.2	52.3	1.7	1.7	1.2	1.2	40.5	51.6	4.0
1996/97	16.3	3.1	50.3	2.7	2.7	2.3	2.3	40.0	51.0	3.6
1997/98	16.3	3.6	58.8	1.4	1.4	3.0	3.0	43.3	54.4	6.5
1998/99	16.0	3.2	51.1	1.2	1.2	3.3	3.3	40.8	51.6	4.0
1999/00	15.8	3.5	54.7	1.7	1.7	3.1	3.3	41.8	52.4	4.8
2000/01	15.0	2.4	36.0	2.9	2.8	1.2	1.5	30.2	40.3	2.1
2001/02	15.6	3.3	51.7	1.8	1.7	4.4	4.0	35.8	46.8	4.4
2002/03	14.8	3.1	46.2	1.5	1.5	3.1	3.1	34.4	45.4	3.6
WHEAT AND COARSE GRAINS										
1991/92	26.4	3.9	103.2	2.3	2.3	6.6	6.7	58.7	95.3	13.7
1992/93	25.0	2.8	69.5	8.5	8.6	3.4	3.3	50.1	81.2	7.3
1993/94	26.2	2.9	74.9	5.4	5.3	2.0	2.0	45.5	76.3	9.3
1994/95	26.7	3.0	80.6	4.1	4.1	5.9	5.9	48.2	79.2	8.9
1995/96	25.9	3.4	87.2	4.0	4.1	7.3	7.3	51.1	81.6	11.2
1996/97	25.0	3.1	76.3	7.1	7.1	4.2	4.2	51.5	80.6	9.8
1997/98	26.2	3.6	93.1	3.5	3.5	6.1	6.1	55.4	86.0	14.2
1998/99	25.6	3.3	85.1	3.3	3.3	7.5	7.5	52.9	83.5	11.6
1999/00	24.1	3.4	82.8	3.3	3.3	6.5	6.7	52.3	82.1	9.2
2000/01	24.2	2.7	64.6	5.8	5.7	3.6	3.8	40.1	69.3	6.8
2001/02	25.7	3.4	87.0	3.4	3.4	8.6	8.2	47.0	77.9	10.7
2002/03	24.4	3.1	76.6	3.5	3.5	6.0	6.0	44.5	75.7	9.0

Notes:

Trade statistics are on a July/June year for wheat and an October/September year for coarse grains.

**FORMER SOVIET UNION: GRAIN SUPPLY AND DEMAND
WHEAT AND COARSE GRAINS
MILLION METRIC TONS/HECTARES**

	Area Harvested	Yield	Production	--Imports-- Mkt Yr.	Trade Yr.	--Exports-- Mkt Yr.	Trade Yr.	Domestic Feed Use	Domestic Total Use	Ending Stocks
FSU 12 TOTAL										
<u>WHEAT</u>										
1996/97	47.6	1.3	63.1	6.5	6.5	4.4	4.4	22.5	69.0	8.3
1997/98	48.2	1.7	80.6	6.7	6.7	6.3	6.3	24.5	72.1	17.2
1998/99	44.9	1.2	56.0	5.3	5.3	8.8	8.8	16.2	63.9	5.8
1999/00	41.8	1.5	64.7	9.5	9.5	9.3	9.3	17.0	64.9	5.8
2000/01	43.0	1.5	62.9	5.0	5.0	4.7	4.7	16.2	63.6	5.4
2001/02	45.7	2.0	91.3	3.9	3.9	13.1	13.1	19.8	68.9	18.5
2002/03	47.1	1.7	82.3	4.0	4.0	11.7	11.7	21.6	71.9	21.2
<u>COARSE GRAINS</u>										
1996/97	38.1	1.4	52.0	1.1	1.1	1.4	1.6	34.1	52.6	3.3
1997/98	38.5	1.8	68.5	0.4	0.4	3.0	2.8	37.2	56.9	12.3
1998/99	33.3	1.1	37.3	1.5	1.5	2.3	2.3	26.2	44.4	4.5
1999/00	31.8	1.3	40.5	3.1	2.7	2.0	2.2	27.0	42.3	3.7
2000/01	31.2	1.6	49.5	1.1	0.9	2.5	3.4	29.1	45.8	6.1
2001/02	32.9	1.9	62.1	1.0	1.3	6.5	6.3	33.8	51.5	11.2
2002/03	32.5	1.7	54.2	1.5	1.3	6.7	6.8	34.1	51.4	8.7
FSU 15 TOTAL										
<u>WHEAT</u>										
1996/97	48.2	1.3	64.5	6.8	6.8	4.6	4.6	23.1	70.4	8.8
1997/98	48.8	1.7	82.3	6.9	6.9	6.4	6.4	25.1	73.6	17.9
1998/99	45.5	1.3	57.6	5.5	5.5	8.8	8.8	17.0	65.6	6.5
1999/00	42.4	1.6	66.1	9.8	9.8	9.4	9.4	17.7	66.6	6.4
2000/01	43.6	1.5	64.8	5.1	5.1	4.8	4.8	17.0	65.4	6.1
2001/02	46.3	2.0	92.9	4.1	4.1	13.3	13.3	20.5	70.5	19.2
2002/03	47.7	1.8	83.9	4.2	4.2	11.8	11.8	22.3	73.7	21.8
<u>COARSE GRAINS</u>										
1996/97	39.3	1.4	54.7	1.3	1.3	1.4	1.6	36.2	55.4	3.7
1997/98	39.8	1.8	71.3	0.5	0.5	3.0	2.8	39.2	59.6	12.8
1998/99	34.6	1.2	39.8	1.6	1.6	2.3	2.3	28.2	47.1	4.9
1999/00	32.9	1.3	42.2	3.3	2.9	2.0	2.2	28.5	44.5	3.9
2000/01	32.2	1.6	51.7	1.2	1.0	2.5	3.4	30.8	48.2	6.2
2001/02	33.8	1.9	64.1	1.2	1.5	6.5	6.3	35.3	53.6	11.3
2002/03	33.5	1.7	56.1	1.6	1.4	6.7	6.8	35.6	53.6	8.8
RUSSIAN FEDERATION										
<u>WHEAT</u>										
1996/97	25.7	1.4	34.9	2.6	2.6	0.7	0.7	14.4	38.1	1.6
1997/98	26.1	1.7	44.2	3.1	3.1	1.1	1.1	16.4	39.8	8.0
1998/99	26.1	1.0	27.0	2.5	2.5	1.7	1.7	11.2	34.8	1.0
1999/00	23.0	1.3	31.0	5.1	5.1	0.5	0.5	11.8	35.4	1.2
2000/01	23.2	1.5	34.5	1.6	1.6	0.7	0.7	11.5	35.2	1.4
2001/02	23.8	2.0	46.9	0.5	0.5	3.7	3.7	14.0	38.0	7.1
2002/03	24.9	1.6	41.0	1.0	1.0	2.5	2.5	15.0	39.0	7.6
<u>COARSE GRAINS</u>										
1996/97	24.8	1.3	31.6	0.9	0.9	0.2	0.3	20.4	32.6	1.3
1997/98	25.0	1.7	41.6	0.3	0.3	1.5	1.3	22.1	34.2	7.4
1998/99	22.1	0.9	19.0	1.2	1.2	0.1	0.1	14.0	25.6	1.8
1999/00	20.9	1.0	21.8	2.5	2.0	0.1	0.4	14.9	24.9	1.1
2000/01	19.6	1.4	28.2	0.8	0.6	0.6	1.0	15.6	26.9	2.6
2001/02	20.6	1.7	35.2	0.8	1.0	2.4	2.3	17.7	29.2	7.0
2002/03	20.3	1.5	30.4	1.2	1.0	2.8	2.8	18.8	30.4	5.3

Notes:

See second page of Former Soviet Union: Grain Supply and Demand tables.

FORMER SOVIET UNION: GRAIN SUPPLY AND DEMAND (CONTINUED)
WHEAT AND COARSE GRAINS
MILLION METRIC TONS/HECTARES

	Area Harvested	Yield	Production	--Imports-- Mkt Yr.	Trade Yr.	--Exports-- Mkt Yr.	Trade Yr.	Domestic Feed Use	Domestic Total Use	Ending Stocks
KAZAKHSTAN										
<u>WHEAT</u>										
1998/99	9.1	0.5	4.7	0.0	0.0	2.3	2.3	1.1	4.7	0.6
1999/00	8.7	1.3	11.2	0.0	0.0	6.5	6.5	1.0	4.6	0.7
2000/01	10.5	0.9	9.1	0.0	0.0	3.7	3.7	1.1	4.7	1.5
2001/02	10.7	1.2	12.7	0.0	0.0	3.8	3.8	1.5	5.2	5.2
2002/03	11.0	1.1	12.0	0.0	0.0	5.0	5.0	1.7	5.6	6.7
<u>COARSE GRAINS</u>										
1998/99	2.2	0.6	1.4	0.0	0.0	0.5	0.5	1.0	1.2	0.3
1999/00	2.0	1.3	2.7	0.0	0.0	0.8	0.8	1.1	1.4	0.8
2000/01	2.0	1.1	2.1	0.0	0.0	0.3	0.3	1.3	1.6	1.0
2001/02	2.1	1.4	2.9	0.0	0.0	0.5	0.5	1.9	2.3	1.1
2002/03	2.1	1.2	2.5	0.0	0.0	0.5	0.5	2.0	2.3	0.8
UKRAINE										
<u>WHEAT</u>										
1998/99	5.6	2.6	14.9	0.1	0.1	4.7	4.7	2.1	12.4	1.9
1999/00	5.9	2.3	13.6	0.5	0.5	2.0	2.0	1.9	12.2	1.8
2000/01	5.2	2.0	10.2	0.7	0.7	0.1	0.1	1.7	12.2	0.5
2001/02	6.9	3.1	21.3	0.1	0.1	5.5	5.5	2.2	12.7	3.7
2002/03	6.8	2.6	17.5	0.1	0.1	4.0	4.0	2.5	13.1	4.2
<u>COARSE GRAINS</u>										
1998/99	5.9	1.7	10.3	0.0	0.0	1.6	1.6	6.2	10.6	1.5
1999/00	5.8	1.8	10.6	0.1	0.1	1.0	0.9	6.7	10.0	1.2
2000/01	6.5	2.0	13.0	0.0	0.0	1.4	1.9	7.6	10.8	2.0
2001/02	6.9	2.5	17.0	0.1	0.1	3.5	3.5	9.0	13.0	2.5
2002/03	7.3	2.0	14.6	0.1	0.1	3.4	3.4	8.6	12.0	1.8
UZBEKISTAN										
<u>WHEAT</u>										
2000/01	1.2	3.0	3.6	0.6	0.6	0.0	0.0	0.7	4.2	0.5
2001/02	1.2	2.8	3.4	0.8	0.8	0.0	0.0	0.7	4.2	0.6
2002/03	1.2	3.9	4.7	0.3	0.3	0.0	0.0	0.8	4.9	0.7
<u>COARSE GRAINS</u>										
2000/01	0.1	1.8	0.2	0.0	0.0	0.0	0.0	0.1	0.2	0.0
2001/02	0.1	2.6	0.2	0.0	0.0	0.0	0.0	0.2	0.2	0.0
2002/03	0.1	2.6	0.2	0.0	0.0	0.0	0.0	0.2	0.2	0.0
OTHER FSU-12										
<u>WHEAT</u>										
2000/01	2.9	1.9	5.6	2.1	2.1	0.2	0.2	1.2	7.5	1.6
2001/02	3.1	2.2	7.0	2.5	2.5	0.2	0.2	1.4	8.9	2.0
2002/03	3.2	2.2	7.1	2.6	2.6	0.2	0.2	1.6	9.4	2.1
<u>COARSE GRAINS</u>										
2000/01	3.1	1.9	6.0	0.2	0.3	0.1	0.1	4.5	6.3	0.5
2001/02	3.2	2.1	6.9	0.2	0.3	0.2	0.1	4.9	6.9	0.6
2002/03	2.9	2.3	6.5	0.3	0.3	0.1	0.1	4.6	6.5	0.7
BALTICS										
<u>WHEAT</u>										
2000/01	0.6	3.0	1.8	0.1	0.1	0.1	0.1	0.8	1.7	0.7
2001/02	0.6	2.8	1.6	0.3	0.3	0.2	0.2	0.7	1.7	0.7
2002/03	0.6	2.8	1.6	0.2	0.2	0.2	0.2	0.8	1.7	0.7
<u>COARSE GRAINS</u>										
2000/01	1.0	2.2	2.2	0.1	0.1	0.0	0.0	1.7	2.4	0.2
2001/02	0.9	2.1	1.9	0.2	0.2	0.0	0.0	1.5	2.1	0.2
2002/03	0.9	2.1	1.9	0.2	0.2	0.0	0.0	1.5	2.1	0.2

Notes: Crop Year is July/June for wheat and October/September for coarse grains; all marketing year trade is reported on a July/June basis. Coarse Grains includes barley, corn, millet, mixed grain, millet, rye, and sorghum. Production estimates are on a clean-weight basis.

**WHEAT SUPPLY AND DISAPPEARANCE
SELECTED EXPORTERS
MILLION METRIC TONS/HECTARES**

	Area		--Imports--		--Exports--		Domestic	Domestic	Ending	
	Harvested	Yield	Production	Mkt Yr.	Trade Yr.	Mkt Yr.	Trade Yr.	Feed Use	Total Use	Stocks
ARGENTINA (MY DEC/NOV)										
1994/95	5.1	2.2	11.3	0.0	0.0	7.3	7.9	0.2	4.3	0.2
1995/96	4.5	1.9	8.6	0.0	0.0	4.5	4.4	0.2	4.2	0.2
1996/97	7.1	2.2	15.9	0.0	0.0	10.2	10.1	0.0	4.9	1.0
1997/98	5.7	2.8	15.7	0.0	0.0	11.2	9.8	0.0	4.8	0.8
1998/99	5.4	2.5	13.3	0.0	0.0	8.6	9.2	0.0	4.9	0.7
1999/00	6.2	2.7	16.4	0.0	0.0	11.6	11.1	0.1	4.9	0.6
2000/01	6.4	2.5	16.2	0.0	0.0	11.3	11.4	0.1	5.0	0.6
2001/02	6.8	2.3	15.5	0.0	0.0	10.8	11.6	0.0	4.7	0.6
2002/03	6.0	2.3	14.0	0.0	0.0	9.3	9.0	0.1	4.6	0.7
AUSTRALIA (MY OCT/SEPT)										
1994/95	8.0	1.1	8.9	0.1	0.1	6.4	7.8	1.6	3.9	2.4
1995/96	9.2	1.8	16.5	0.0	0.0	13.3	12.1	1.1	3.7	2.0
1996/97	10.9	2.1	22.9	0.1	0.1	19.2	18.2	0.7	3.3	2.4
1997/98	10.4	1.8	19.2	0.0	0.0	15.3	15.4	2.3	5.0	1.3
1998/99	11.5	1.9	21.5	0.1	0.1	16.5	16.1	1.8	4.5	1.9
1999/00	12.2	2.0	24.8	0.1	0.1	17.8	17.1	2.5	5.2	3.6
2000/01	13.0	1.8	23.8	0.1	0.1	15.9	16.7	4.0	6.9	4.6
2001/02	12.5	1.9	24.0	0.1	0.1	16.5	16.5	4.0	7.0	5.2
2002/03	11.5	1.7	20.0	0.1	0.1	15.5	15.5	3.7	6.6	3.1
CANADA (MY AUG/JUL)										
1994/95	10.8	2.1	23.1	0.1	0.1	20.9	21.8	4.0	7.8	5.7
1995/96	11.1	2.2	25.0	0.2	0.2	16.3	17.1	3.9	7.8	6.7
1996/97	12.3	2.4	29.8	0.2	0.2	19.5	18.1	4.4	8.2	9.0
1997/98	11.4	2.1	24.3	0.1	0.1	20.1	21.3	3.4	7.3	6.0
1998/99	10.8	2.2	24.1	0.2	0.2	14.7	14.4	4.1	8.1	7.4
1999/00	10.4	2.6	26.9	0.2	0.2	19.2	19.4	3.6	7.6	7.7
2000/01	11.0	2.4	26.8	0.2	0.2	17.3	17.4	3.9	7.9	9.5
2001/02	10.7	2.0	21.3	0.3	0.3	16.5	16.8	3.8	8.1	6.6
2002/03	10.2	1.8	18.0	0.2	0.2	12.0	12.0	4.3	8.7	4.1
SUBTOTAL										
1994/95	23.9	1.8	43.3	0.2	0.2	34.5	37.5	5.8	16.1	8.2
1995/96	24.9	2.0	50.1	0.3	0.3	34.1	33.6	5.1	15.6	8.9
1996/97	30.3	2.3	68.6	0.3	0.3	48.9	46.4	5.1	16.4	12.4
1997/98	27.6	2.2	59.2	0.2	0.2	46.6	46.5	5.7	17.1	8.2
1998/99	27.7	2.1	58.8	0.2	0.2	39.7	39.7	6.0	17.5	10.0
1999/00	28.7	2.4	68.1	0.3	0.3	48.6	47.6	6.2	17.8	12.0
2000/01	30.4	2.2	66.8	0.3	0.3	44.5	45.4	7.9	19.8	14.7
2001/02	30.0	2.0	60.8	0.4	0.4	43.8	44.9	7.8	19.8	12.3
2002/03	27.7	1.9	52.0	0.3	0.3	36.8	36.5	8.1	19.9	7.9
INDIA (MY APR/MAR)										
1994/95	25.1	2.4	59.8	0.0	0.0	0.1	0.1	0.2	58.3	8.7
1995/96	25.6	2.6	65.5	0.1	0.1	1.5	1.9	0.3	65.0	7.8
1996/97	25.0	2.5	62.1	1.4	1.8	2.0	1.6	0.4	66.1	3.2
1997/98	25.9	2.7	69.4	1.7	2.3	0.0	0.0	0.4	69.2	5.1
1998/99	26.7	2.5	66.4	2.2	1.3	0.0	0.0	0.4	63.7	9.9
1999/00	27.4	2.6	70.8	1.4	1.3	0.2	0.2	0.4	68.8	13.1
2000/01	27.5	2.8	76.4	0.1	0.1	1.6	2.4	0.5	66.4	21.5
2001/02	25.1	2.7	68.8	0.1	0.1	3.0	3.0	0.5	60.4	27.0
2002/03	26.2	2.7	72.0	0.1	0.1	4.5	4.5	0.6	63.1	31.5
TURKEY (MY JUN/MAY)										
1994/95	8.6	1.7	14.7	0.5	0.5	1.8	1.9	0.6	15.2	0.7
1995/96	8.6	1.8	15.5	2.1	2.1	1.1	1.2	0.7	16.0	1.2
1996/97	8.5	1.9	16.0	2.6	2.6	1.0	1.0	0.8	16.4	2.5
1997/98	8.5	1.9	16.0	1.8	1.8	1.3	1.5	1.0	16.8	2.2
1998/99	8.6	2.1	18.0	1.9	1.9	2.6	2.8	1.0	16.9	2.6
1999/00	8.7	1.9	16.5	1.5	1.5	2.2	2.0	1.0	16.8	1.6
2000/01	8.7	2.1	18.0	0.5	0.4	1.6	1.6	1.0	16.7	1.7
2001/02	8.5	1.8	15.5	1.0	1.0	0.5	0.5	1.2	16.6	1.1
2002/03	8.6	2.2	18.5	0.5	0.5	1.5	1.5	1.0	17.1	1.5

Notes:

Wheat trade statistics are on a July/June year.

**CORN SUPPLY AND DISAPPEARANCE
SELECTED EXPORTERS
MILLION METRIC TONS/HECTARES**

	Area			--Imports--		--Exports--		Domestic	Domestic	Ending
	Harvested	Yield	Production	Mkt Yr.	Trade Yr.	Mkt Yr.	Trade Yr.	Feed Use	Total Use	Stocks
ARGENTINA (MY MAR/FEB)										
1994/95	2.6	4.5	11.4	0.0	0.0	5.8	6.0	4.0	5.5	1.1
1995/96	2.7	4.1	11.1	0.0	0.0	7.5	7.0	2.8	4.3	0.4
1996/97	3.4	4.6	15.5	0.0	0.0	10.8	10.2	2.8	4.3	0.8
1997/98	3.2	6.1	19.4	0.0	0.0	12.2	12.8	4.7	6.4	1.5
1998/99	2.6	5.2	13.5	0.0	0.0	7.9	7.8	4.9	6.5	0.7
1999/00	3.1	5.5	17.2	0.0	0.0	11.9	8.9	4.0	5.5	0.5
2000/01	2.8	5.5	15.4	0.0	0.0	9.7	12.2	3.9	5.6	0.6
2001/02	2.5	5.9	14.4	0.0	0.0	9.5	9.5	3.4	4.9	0.7
2002/03	2.0	5.5	11.0	0.0	0.0	6.3	7.3	3.3	4.8	0.6
CHINA (MY OCT/SEPT)										
1994/95	21.2	4.7	99.3	4.3	4.3	1.4	1.4	74.0	100.6	82.3
1995/96	22.8	4.9	112.0	1.5	1.5	0.2	0.2	79.0	106.0	89.6
1996/97	24.5	5.2	127.5	0.1	0.1	3.9	3.9	83.0	111.0	102.3
1997/98	23.8	4.4	104.3	0.3	0.3	6.2	6.2	86.0	113.0	87.7
1998/99	25.2	5.3	133.0	0.3	0.3	3.3	3.3	87.0	115.5	102.1
1999/00	25.9	4.9	128.1	0.1	0.1	9.9	9.9	90.0	118.0	102.3
2000/01	23.1	4.6	106.0	0.1	0.1	7.3	7.3	93.0	120.0	81.1
2001/02	24.0	4.8	114.0	0.1	0.1	7.0	7.0	97.0	124.0	64.2
2002/03	24.5	5.1	125.0	0.1	0.1	8.0	8.0	99.0	127.0	54.3
SOUTH AFRICA (MY MAY/APR)										
1994/95	3.5	1.4	4.9	0.8	0.6	0.3	2.3	3.7	7.7	0.8
1995/96	3.8	2.7	10.2	0.4	0.6	2.7	1.8	3.7	7.7	1.0
1996/97	4.0	2.5	10.1	0.2	0.4	1.4	1.6	3.6	7.6	2.2
1997/98	3.6	2.2	7.7	0.1	0.1	1.2	1.0	4.0	8.0	0.8
1998/99	3.6	2.2	7.7	0.6	0.3	0.5	0.8	3.7	7.7	0.9
1999/00	3.8	2.8	10.6	0.0	0.4	1.4	0.8	4.1	8.0	2.0
2000/01	3.2	2.3	7.5	0.4	0.0	1.3	1.4	4.1	8.1	0.5
2001/02	3.4	2.7	9.1	0.6	0.9	1.6	1.4	3.9	7.9	0.7
2002/03	3.6	2.6	9.5	0.2	0.4	1.8	1.7	4.0	8.0	0.6
HUNGARY (MY JUL/JUN)										
1994/95	1.2	3.6	4.3	0.0	0.0	0.6	0.6	3.1	3.8	0.2
1995/96	1.0	4.4	4.6	0.0	0.0	0.1	0.1	3.7	4.3	0.4
1996/97	1.1	5.7	6.0	0.0	0.0	1.1	1.1	4.0	4.7	0.6
1997/98	1.0	6.8	6.8	0.0	0.0	1.2	1.2	4.5	5.2	1.0
1998/99	1.1	5.5	6.0	0.0	0.0	1.8	1.8	4.4	4.9	0.3
1999/00	1.2	5.8	7.0	0.0	0.0	1.8	1.8	4.4	5.0	0.5
2000/01	1.2	4.2	5.0	0.0	0.0	0.7	0.7	4.0	4.6	0.1
2001/02	1.3	5.8	7.6	0.0	0.0	3.0	3.0	3.8	4.4	0.3
2002/03	1.1	5.7	6.3	0.0	0.0	2.0	2.0	3.8	4.4	0.2
TOTALS										
1994/95	28.4	4.2	119.8	5.1	4.9	8.0	10.3	84.8	117.5	84.4
1995/96	30.3	4.6	137.9	1.9	2.1	10.4	9.0	89.2	122.3	91.4
1996/97	33.0	4.8	159.1	0.2	0.4	17.3	16.8	93.4	127.6	105.9
1997/98	31.5	4.4	138.2	0.4	0.4	20.9	21.2	99.2	132.5	91.1
1998/99	32.5	4.9	160.2	0.8	0.6	13.6	13.8	99.9	134.6	103.9
1999/00	34.0	4.8	162.8	0.1	0.4	25.1	21.4	102.5	136.5	105.3
2000/01	30.3	4.4	133.9	0.5	0.1	19.0	21.7	105.1	138.4	82.4
2001/02	31.1	4.7	145.1	0.7	1.0	21.1	20.9	108.1	141.2	65.9
2002/03	31.2	4.9	151.8	0.3	0.5	18.1	19.0	110.1	144.2	55.7

Notes:

Corn trade statistics are on an Oct/Sept year.

**BARLEY AND SORGHUM SUPPLY AND DISAPPEARANCE
SELECTED EXPORTERS
MILLION METRIC TONS/HECTARES**

	Area Harvested	Yield	Production	--Imports-- Mkt Yr.	Trade Yr.	--Exports-- Mkt Yr.	Trade Yr.	Domestic Feed Use	Domestic Total Use	Ending Stocks
<u>BARLEY</u>										
AUSTRALIA (MY NOV/OCT)										
1994/95	2.5	1.2	2.9	0.1	0.1	1.1	1.4	1.4	2.1	0.2
1995/96	3.1	1.9	5.8	0.0	0.0	3.4	3.4	1.4	2.3	0.4
1996/97	3.4	2.0	6.7	0.0	0.0	4.0	4.0	2.1	2.7	0.4
1997/98	3.5	1.8	6.5	0.0	0.0	3.0	2.8	2.3	3.0	0.8
1998/99	3.2	1.9	6.0	0.0	0.0	4.2	4.2	1.3	2.1	0.5
1999/00	2.6	1.9	5.0	0.0	0.0	2.6	2.9	1.7	2.6	0.4
2000/01	3.7	2.0	7.2	0.0	0.0	3.6	3.6	2.0	3.2	0.8
2001/02	3.7	2.0	7.5	0.0	0.0	4.2	4.2	2.2	3.4	0.7
2002/03	3.3	2.0	6.5	0.0	0.0	3.4	3.5	2.2	3.2	0.6
CANADA (MY AUG/JULY)										
1994/95	4.1	2.9	11.7	0.0	0.0	2.9	2.6	9.6	10.3	1.8
1995/96	4.4	3.0	13.0	0.0	0.0	2.6	2.6	9.8	10.6	1.7
1996/97	4.9	3.2	15.6	0.0	0.0	3.4	3.4	10.3	11.1	2.9
1997/98	4.7	2.9	13.5	0.0	0.0	2.2	1.9	10.5	11.8	2.5
1998/99	4.3	3.0	12.7	0.0	0.0	1.1	1.2	10.1	11.3	2.7
1999/00	4.1	3.2	13.2	0.0	0.0	1.7	1.8	9.9	11.4	2.8
2000/01	4.6	3.0	13.5	0.0	0.1	1.9	2.0	10.4	12.0	2.5
2001/02	4.2	2.7	11.4	0.1	0.1	1.0	1.0	9.3	10.9	2.0
2002/03	4.3	2.1	9.0	0.1	0.1	0.5	0.5	7.8	9.3	1.3
EUROPEAN UNION (MY JUL/JUN)										
1994/95	11.0	4.0	43.7	0.2	0.2	5.4	5.1	30.5	42.0	6.9
1995/96	10.8	4.1	43.7	0.3	0.3	2.3	2.5	31.9	43.3	5.4
1996/97	11.4	4.5	51.7	0.1	0.1	6.9	6.2	32.9	44.1	6.2
1997/98	11.9	4.4	52.6	0.0	0.1	2.5	3.0	31.0	43.9	12.4
1998/99	11.5	4.5	51.9	0.1	0.1	7.4	8.9	31.8	43.2	13.7
1999/00	10.9	4.5	48.9	0.1	0.1	10.1	10.5	30.3	42.1	10.5
2000/01	10.8	4.8	51.7	0.2	0.2	7.9	6.1	33.9	46.1	8.3
2001/02	10.8	4.5	48.2	1.2	1.0	3.5	4.0	32.3	44.5	9.6
2002/03	10.8	4.7	50.6	0.1	0.1	4.5	4.5	30.9	44.1	11.8
<u>SORGHUM</u>										
ARGENTINA (MY MAR/FEB)										
1994/95	0.5	3.5	1.7	0.0	0.0	0.2	0.2	1.5	1.6	0.3
1995/96	0.6	3.3	2.1	0.0	0.0	0.8	0.8	1.3	1.4	0.2
1996/97	0.7	3.7	2.5	0.0	0.0	0.8	0.6	1.6	1.7	0.3
1997/98	0.8	4.8	3.8	0.0	0.0	1.3	1.4	2.0	2.1	0.6
1998/99	0.7	4.4	3.2	0.0	0.0	0.6	0.5	2.5	2.6	0.7
1999/00	0.7	4.6	3.4	0.0	0.0	0.9	0.7	2.4	2.5	0.7
2000/01	0.6	4.8	2.7	0.0	0.0	0.4	0.6	2.4	2.5	0.4
2001/02	0.5	5.1	2.8	0.0	0.0	0.5	0.5	2.2	2.3	0.4
2002/03	0.6	4.5	2.5	0.0	0.0	0.3	0.3	2.1	2.2	0.4
AUSTRALIA (MY MAR/FEB)										
1994/95	0.7	1.9	1.3	0.0	0.3	0.1	0.0	1.2	1.3	0.1
1995/96	0.8	2.1	1.6	0.0	0.0	0.5	0.6	1.0	1.1	0.1
1996/97	0.5	2.6	1.4	0.0	0.0	0.2	0.2	1.0	1.2	0.1
1997/98	0.5	2.1	1.1	0.0	0.0	0.2	0.2	0.9	0.9	0.1
1998/99	0.6	3.2	1.9	0.0	0.0	0.5	0.4	1.3	1.4	0.2
1999/00	0.6	3.4	2.1	0.0	0.0	0.9	0.8	1.3	1.3	0.1
2000/01	0.8	2.6	2.1	0.0	0.0	0.6	0.9	1.4	1.5	0.1
2001/02	0.8	2.3	1.8	0.0	0.0	0.5	0.6	1.3	1.3	0.1
2002/03	0.9	2.6	2.2	0.0	0.0	0.8	0.7	1.4	1.4	0.1

Notes:

Barley and sorghum trade statistics are on an Oct/Sept year.

U.S. GRAINS: SUPPLY AND DISTRIBUTION
WHEAT, CORN, SORGHUM, BARLEY, OATS, RYE AND RICE
MILLION ACRES AND MILLION BUSHELS/HUNDREDWEIGHTS

	Area		--Imports--		--Exports--		Domestic	Domestic	Ending	
	Harvested	Yield	Production	Mkt Yr.	Trade Yr.	Mkt Yr.	Trade Yr.	Feed Use	Total Use	Stocks
WHEAT (MY JUNE/MAY)										
1997/98	62.8	39.5	2,481	95	93	1,040	1,032	251	1,257	722
1998/99	59.0	43.2	2,547	103	104	1,046	1,067	391	1,381	946
1999/00	53.8	42.7	2,299	94	92	1,089	1,082	288	1,301	950
2000/01	53.1	42.0	2,232	90	89	1,062	1,023	304	1,334	876
2001/02	48.7	40.2	1,958	108	105	961	963	197	1,208	772
2002/03	47.6	35.4	1,686	105	103	900	900	175	1,196	467
CORN (MY SEPT/AUG)										
1997/98	72.7	126.7	9,207	9	5	1,504	1,484	5,482	7,287	1,308
1998/99	72.6	134.4	9,759	19	15	1,984	2,045	5,468	7,314	1,787
1999/00	70.5	133.8	9,431	15	9	1,937	1,944	5,665	7,578	1,718
2000/01	72.4	136.9	9,915	7	5	1,941	1,897	5,842	7,799	1,899
2001/02	68.8	138.2	9,507	10	15	1,900	1,909	5,825	7,880	1,636
2002/03	71.0	125.2	8,886	15	18	2,000	2,008	5,600	7,770	767
SORGHUM (MY SEPT/AUG)										
1997/98	9.2	69.2	634	0	0	212	203	365	420	49
1998/99	7.7	67.3	520	0	0	197	204	262	307	65
1999/00	8.5	69.7	595	0	0	255	248	285	340	65
2000/01	7.7	60.9	471	0	0	237	231	222	258	42
2001/02	8.6	59.9	515	0	0	240	244	215	260	56
2002/03	7.5	50.3	380	0	0	220	232	135	180	36
BARLEY (MY JUNE/MAY)										
1997/98	6.2	58.1	360	40	34	74	49	144	316	119
1998/99	5.9	60.1	352	30	27	29	25	161	331	142
1999/00	4.7	59.2	280	28	29	28	39	138	310	111
2000/01	5.2	61.1	319	29	30	58	49	123	295	106
2001/02	4.3	58.2	250	24	22	27	23	88	260	93
2002/03	4.5	55.9	252	25	23	20	23	100	272	78
OATS (MY JUNE/MAY)										
1997/98	2.8	59.5	167	98	113	2	2	185	256	74
1998/99	2.8	60.2	166	108	93	2	2	196	265	81
1999/00	2.5	59.6	146	99	97	2	1	180	248	76
2000/01	2.3	64.2	150	106	106	2	2	189	257	73
2001/02	1.9	61.3	117	96	75	3	2	147	220	63
2002/03	2.6	54.1	143	100	102	2	2	175	247	57
RYE (MY JUNE/MAY)										
1997/98	0.3	25.8	8	6	5	0	0	5	14	1
1998/99	0.4	29.1	12	3	3	0	0	4	14	2
1999/00	0.4	28.8	11	3	3	0	0	6	15	2
2000/01	0.3	28.3	8	3	3	0	0	2	12	1
2001/02	0.3	27.4	7	5	6	0	0	3	12	1
2002/03	0.3	27.4	8	4	5	0	0	2	11	1
	Area		--Production--		--Imports--		--Exports--		Domestic	Ending
	Harvested	Yield	Rough	Milled	Mkt Yr.	Trade Yr.	Mkt Yr.	Trade Yr.	Total Use	Stocks
RICE (MY AUG/JULY)										
1997/98	3.1	59.0	183	127	9	9	88	101	104	28
1998/99	3.3	56.6	184	128	11	11	87	84	114	22
1999/00	3.5	58.7	206	143	10	10	89	90	122	27
2000/01	3.0	62.8	191	131	11	13	83	82	121	29
2001/02	3.3	64.3	213	149	13	13	95	93	123	38
2002/03	3.2	63.9	206	142	14	14	92	94	126	43

Notes:

Wheat trade year statistics are on July/June years. Barley, corn, sorghum, rye, and oats trade year statistics are on Oct/Sept years. Rice statistics are rough basis; trade year statistics are for subsequent calendar year. Rounding errors in conversion from international units causes some discrepancies with World Board Supply and Demand Estimates.

**TOTAL WHEAT AND COARSE GRAINS: SUPPLY AND DEMAND
MILLIONS OF METRIC TONS/HECTARES**

	Area			World	Feed	Total	Ending	Stocks As
	Harvested	Yield	Production	Trade	Use	Use	Stocks	% of Cons.
WHEAT AND COARSE GRAINS								
1974/75	552.8	1.77	977.9	125.6	450.8	970.2	170.2	17.5
1975/76	564.7	1.76	993.7	139.2	457.1	984.3	179.5	18.2
1976/77	575.1	1.92	1106.4	142.9	489.4	1044.8	241.1	23.1
1977/78	570.7	1.87	1068.9	158.2	511.7	1076.8	233.2	21.7
1978/79	569.7	2.08	1183.1	161.8	556.8	1138.1	278.2	24.4
1979/80	569.7	2.03	1154.0	182.6	573.9	1157.6	274.6	23.7
1980/81	577.9	2.01	1159.8	200.5	562.6	1179.4	256.4	21.7
1981/82	588.0	2.05	1204.2	196.8	573.6	1178.5	282.1	23.9
1982/83	576.4	2.17	1248.3	189.6	593.5	1197.4	333.3	27.8
1983/84	563.2	2.06	1162.5	193.1	588.5	1216.2	279.6	23.0
1984/85	567.1	2.32	1315.3	203.6	610.1	1253.9	341.0	27.2
1985/86	571.0	2.33	1328.7	165.1	613.4	1248.5	421.2	33.7
1986/87	565.7	2.38	1348.8	174.6	644.4	1300.5	469.6	36.1
1987/88	545.1	2.35	1283.2	202.1	652.3	1330.1	420.5	31.6
1988/89	542.3	2.25	1218.0	203.2	618.5	1302.0	336.5	25.8
1989/90	548.4	2.42	1327.0	208.6	643.1	1345.1	318.4	23.7
1990/91	548.7	2.58	1417.1	189.8	664.5	1372.3	363.2	26.5
1991/92	545.3	2.48	1353.6	207.1	651.8	1364.7	352.0	25.8
1992/93	548.8	2.61	1433.6	205.9	662.6	1398.5	387.4	27.7
1993/94	540.6	2.51	1357.5	188.1	654.8	1394.8	350.1	25.1
1994/95	538.5	2.59	1395.3	200.0	670.3	1407.6	337.8	24.0
1995/96	532.6	2.52	1341.4	187.1	639.8	1391.1	288.1	20.7
1996/97	552.7	2.70	1490.5	194.3	674.0	1449.0	329.7	22.8
1997/98	539.1	2.77	1493.9	189.9	684.2	1456.4	367.2	25.2
1998/99	532.3	2.78	1478.6	198.6	678.2	1452.3	393.5	27.1
1999/00	516.2	2.83	1462.3	217.3	683.9	1470.8	385.0	26.2
2000/01	514.8	2.80	1442.0	207.2	693.8	1472.1	354.9	24.1
2001/02	515.0	2.84	1463.0	209.7	711.3	1485.8	332.1	22.4
2002/03	516.6	2.78	1436.6	202.5	703.2	1495.2	273.6	18.3

Notes:

Wheat and coarse grains trade data are on July/June years through 1975/76. From 1976/77 to the present, coarse grains is on an Oct/Sept trade year. "Stocks as a Percent of Consumption" represents the ratio of marketing year ending stocks to total consumption. Trade statistics exclude intra-EU15 trade.

**WORLD WHEAT AND COARSE GRAINS: SUPPLY AND DEMAND
MILLIONS OF METRIC TONS/HECTARES**

	Area Harvested	Yield	Production	World Trade	Feed Use	Total Use	Ending Stocks	Stocks As % of Cons.
WHEAT								
1974/75	220.0	1.61	355.2	62.8	72.0	356.5	81.4	22.8
1975/76	225.3	1.56	352.6	65.5	62.6	347.3	86.7	25.0
1976/77	233.1	1.78	414.3	62.1	68.1	373.7	127.4	34.1
1977/78	227.2	1.66	377.8	71.7	85.5	396.0	109.2	27.6
1978/79	228.9	1.92	438.9	71.3	89.8	413.3	134.8	32.6
1979/80	228.5	1.83	418.3	85.5	94.0	431.9	121.3	28.1
1980/81	237.1	1.84	436.3	93.2	91.2	444.1	113.8	25.6
1981/82	239.0	1.86	445.1	100.5	90.6	445.1	113.7	25.5
1982/83	237.7	1.99	472.8	97.7	92.8	455.6	131.1	28.8
1983/84	229.3	2.11	484.4	101.2	95.6	469.0	146.4	31.2
1984/85	231.7	2.20	509.0	104.7	99.9	486.3	169.1	34.8
1985/86	229.9	2.15	494.9	83.6	97.2	485.0	179.0	36.9
1986/87	227.9	2.30	524.1	89.7	113.2	511.4	191.7	37.5
1987/88	219.7	2.26	496.0	114.1	113.6	530.1	157.6	29.7
1988/89	217.4	2.28	495.0	104.3	104.0	518.6	134.0	25.8
1989/90	225.8	2.36	533.2	103.8	103.7	531.0	136.1	25.6
1990/91	231.4	2.54	588.1	101.1	130.1	556.1	168.2	30.2
1991/92	222.5	2.44	542.9	111.2	113.8	553.2	157.9	28.5
1992/93	222.9	2.52	562.1	113.1	110.9	551.6	168.6	30.6
1993/94	221.9	2.52	558.6	101.7	108.3	556.2	171.1	30.8
1994/95	214.5	2.44	524.0	101.5	99.6	547.9	147.2	26.9
1995/96	218.7	2.46	538.4	99.1	90.7	549.2	136.4	24.8
1996/97	230.0	2.53	582.0	100.2	97.7	573.9	144.5	25.2
1997/98	228.0	2.68	610.2	104.3	101.8	583.2	171.5	29.4
1998/99	225.1	2.62	589.7	102.0	103.5	582.9	178.3	30.6
1999/00	216.6	2.71	586.2	112.8	99.3	589.1	175.4	29.8
2000/01	219.5	2.66	583.9	103.5	105.1	590.6	168.7	28.6
2001/02	215.3	2.69	579.6	107.6	107.8	586.9	161.3	27.5
2002/03	216.2	2.65	572.3	102.4	107.8	594.9	138.7	23.3
COARSE GRAINS								
1974/75	332.7	1.87	622.7	62.8	378.8	613.6	88.8	14.5
1975/76	339.4	1.89	641.0	73.7	394.5	637.0	92.8	14.6
1976/77	342.0	2.02	692.0	80.8	421.2	671.1	113.8	17.0
1977/78	343.5	2.01	691.1	86.5	426.2	680.8	124.0	18.2
1978/79	340.8	2.18	744.2	90.5	467.0	724.8	143.3	19.8
1979/80	341.2	2.16	735.6	97.1	479.9	725.7	153.3	21.1
1980/81	340.8	2.12	723.6	107.3	471.4	735.3	142.6	19.4
1981/82	349.0	2.18	759.2	96.3	483.0	733.4	168.4	23.0
1982/83	338.7	2.29	775.6	91.9	500.6	741.8	202.2	27.3
1983/84	333.9	2.03	678.2	92.0	492.8	747.2	133.2	17.8
1984/85	335.4	2.40	806.3	98.8	510.2	767.6	171.9	22.4
1985/86	341.1	2.44	833.8	81.5	516.2	763.5	242.2	31.7
1986/87	337.7	2.44	824.7	85.0	531.2	789.1	277.8	35.2
1987/88	325.4	2.42	787.2	88.0	538.6	800.0	262.9	32.9
1988/89	324.9	2.23	722.9	98.9	514.5	783.4	202.5	25.8
1989/90	322.6	2.46	793.8	104.9	539.5	814.0	182.2	22.4
1990/91	317.3	2.61	829.1	88.8	534.5	816.3	195.0	23.9
1991/92	322.8	2.51	810.7	95.9	538.0	811.5	194.2	23.9
1992/93	325.9	2.67	871.6	92.8	551.7	846.9	218.7	25.8
1993/94	318.7	2.51	798.9	86.4	546.4	838.6	179.0	21.3
1994/95	324.0	2.69	871.3	98.5	570.7	859.7	190.6	22.2
1995/96	313.9	2.56	803.0	88.0	549.1	841.9	151.7	18.0
1996/97	322.7	2.82	908.5	94.1	576.4	875.1	185.2	21.2
1997/98	311.1	2.84	883.8	85.6	582.3	873.2	195.7	22.4
1998/99	307.2	2.89	888.9	96.5	574.7	869.4	215.2	24.8
1999/00	299.6	2.92	876.1	104.5	584.5	881.7	209.6	23.8
2000/01	295.2	2.91	858.1	103.7	588.7	881.5	186.2	21.1
2001/02	299.7	2.95	883.4	102.1	603.5	898.9	170.8	19.0
2002/03	300.4	2.88	864.4	100.1	595.4	900.4	134.8	15.0

Notes:

Wheat and coarse grains trade data are on July/June years through 1975/76. From 1976/77 to the present, coarse grains is on an Oct/Sept trade year. "Stocks as a Percent of Consumption" represents the ratio of marketing year ending stocks to total consumption. Trade statistics exclude intra-EU15 trade.

WORLD CORN AND BARLEY: SUPPLY AND DEMAND
MILLIONS OF METRIC TONS/HECTARES

	Area Harvested	Yield	Production	World Trade	Feed Use	Total Use	Ending Stocks	Stocks As % of Cons.
CORN								
1974/75	118.7	2.52	299.8	44.8	183.0	292.8	45.7	15.6
1975/76	122.0	2.78	339.2	52.5	213.2	332.4	52.5	15.8
1976/77	124.3	2.87	356.1	55.5	212.4	340.3	68.3	20.1
1977/78	125.8	2.91	365.4	63.6	226.7	356.5	77.3	21.7
1978/79	126.0	3.11	392.1	67.1	247.0	378.0	91.4	24.2
1979/80	127.3	3.34	425.6	73.2	277.1	405.8	111.2	27.4
1980/81	131.2	3.12	408.8	77.8	279.3	417.9	102.6	24.5
1981/82	133.1	3.32	441.8	66.9	286.2	417.2	127.2	30.5
1982/83	125.3	3.51	440.1	63.2	293.6	417.5	149.8	35.9
1983/84	119.7	2.91	348.2	61.0	271.1	409.0	89.0	21.8
1984/85	129.0	3.55	458.6	66.1	289.5	429.5	118.1	27.5
1985/86	131.0	3.66	479.1	53.8	284.3	419.5	177.7	42.3
1986/87	132.0	3.61	476.0	56.8	304.6	448.9	204.8	45.6
1987/88	127.5	3.54	451.1	58.8	316.3	458.7	197.1	43.0
1988/89	126.3	3.17	400.9	66.0	306.8	453.7	144.3	31.8
1989/90	127.4	3.62	461.2	74.5	324.7	473.0	132.5	28.0
1990/91	129.3	3.73	482.4	58.7	315.8	473.9	141.0	29.7
1991/92	132.6	3.71	491.4	63.0	336.1	491.8	140.6	28.6
1992/93	133.5	4.03	538.5	63.6	349.0	517.5	162.1	31.3
1993/94	131.6	3.62	476.2	57.5	342.3	510.8	127.5	25.0
1994/95	135.7	4.13	560.3	71.9	374.5	540.7	147.1	27.2
1995/96	134.8	3.84	517.4	64.7	369.2	542.1	122.5	22.6
1996/97	141.6	4.18	592.2	66.6	391.7	565.3	149.4	26.4
1997/98	136.1	4.23	575.2	62.9	404.6	578.4	146.2	25.3
1998/99	138.9	4.36	605.6	68.7	404.6	582.7	169.1	29.0
1999/00	139.2	4.36	606.8	73.2	421.4	604.8	171.0	28.3
2000/01	136.4	4.30	586.1	76.3	427.6	606.4	150.7	24.9
2001/02	136.8	4.34	593.5	74.8	438.9	617.7	126.5	20.5
2002/03	138.1	4.25	586.5	73.0	435.6	621.2	91.8	14.8
BARLEY								
1974/75	76.8	1.95	149.6	7.7	105.8	148.3	20.4	13.8
1975/76	79.1	1.72	136.0	9.4	97.2	138.2	18.2	13.2
1976/77	81.7	2.04	166.2	11.2	118.5	162.6	21.7	13.4
1977/78	83.0	1.89	157.1	10.1	113.8	158.9	19.9	12.5
1978/79	80.9	2.17	175.6	10.6	123.9	171.2	24.3	14.2
1979/80	84.0	1.83	153.8	10.2	118.5	159.2	18.9	11.9
1980/81	78.6	2.00	157.4	13.5	111.2	158.3	18.3	11.6
1981/82	81.6	1.83	149.5	14.5	109.4	151.8	16.0	10.6
1982/83	78.8	2.05	161.2	16.0	113.4	155.8	21.5	13.8
1983/84	79.8	1.99	158.5	15.8	122.0	164.5	15.5	9.4
1984/85	79.2	2.15	170.5	17.4	122.4	162.9	23.1	14.2
1985/86	79.9	2.17	173.6	17.7	127.8	167.2	29.6	17.7
1986/87	79.4	2.24	178.1	18.3	132.1	173.8	33.8	19.5
1987/88	78.7	2.23	175.3	18.3	129.7	173.6	33.4	19.2
1988/89	76.4	2.15	164.0	19.0	122.0	166.2	31.1	18.7
1989/90	73.6	2.26	166.1	18.5	126.2	170.5	26.7	15.7
1990/91	72.9	2.46	179.2	19.6	130.5	176.0	29.9	17.0
1991/92	76.4	2.22	169.8	19.4	120.2	166.4	33.4	20.1
1992/93	72.7	2.29	166.0	16.4	118.9	165.7	33.2	20.0
1993/94	73.8	2.29	169.1	18.7	123.8	169.0	33.2	19.7
1994/95	73.0	2.21	161.0	15.3	121.1	165.8	28.5	17.2
1995/96	68.6	2.07	142.1	13.4	107.8	151.1	19.5	12.9
1996/97	66.2	2.32	153.6	17.9	106.2	149.5	23.5	15.7
1997/98	64.9	2.38	154.5	12.8	103.6	145.9	32.1	22.0
1998/99	60.7	2.24	136.0	17.8	98.6	139.2	28.8	20.7
1999/00	55.3	2.31	127.9	18.8	93.8	133.0	23.7	17.8
2000/01	55.0	2.45	134.7	16.6	94.6	136.1	22.3	16.4
2001/02	56.9	2.48	141.2	17.0	95.2	136.2	27.4	20.1
2002/03	56.9	2.38	135.1	16.8	92.9	136.4	26.1	19.1

Notes:

Coarse grains trade data are on July/June years through 1975/76. From 1976/77 to the present, coarse grains is on an Oct/Sept trade year. "Stocks as a Percent of Consumption" represents the ratio of marketing year ending stocks to total consumption. Trade statistics exclude intra-EU15 trade.

**WORLD RICE: SUPPLY AND DEMAND
MILLIONS OF METRIC TONS/HECTARES**

	Area Harvested	Yield (Rough)	--Production--		World Trade	Total Use	Ending Stocks	Stocks As % of Cons.
			Rough	Milled				
1973/74	136.3	2.45	333.8	227.6	7.5	222.4	29.3	13.2
1974/75	137.8	2.40	331.1	225.7	7.2	226.2	28.8	12.7
1975/76	142.9	2.50	357.4	243.1	8.1	232.5	39.4	16.9
1976/77	141.4	2.45	346.8	235.8	10.3	236.4	38.8	16.4
1977/78	143.4	2.57	368.7	250.6	9.5	244.6	44.8	18.3
1978/79	143.6	2.68	385.4	262.4	11.8	252.3	54.8	21.7
1979/80	141.2	2.67	376.6	256.8	12.0	257.6	54.0	21.0
1980/81	144.4	2.75	397.0	270.0	11.9	271.3	52.6	19.4
1981/82	144.4	2.83	408.3	277.9	11.3	279.9	50.5	18.0
1982/83	140.7	2.97	418.3	285.0	11.2	278.7	56.8	20.4
1983/84	144.6	3.12	450.9	306.9	11.9	294.4	69.3	23.5
1984/85	144.1	3.23	464.9	316.7	11.0	298.4	87.7	29.4
1985/86	144.8	3.23	467.2	318.0	11.8	307.9	97.7	31.7
1986/87	144.8	3.33	481.9	316.0	12.9	310.4	103.3	33.3
1987/88	141.6	3.28	464.0	314.6	11.4	313.3	104.6	33.4
1988/89	146.1	3.35	489.7	331.4	14.0	325.2	110.9	34.1
1989/90	146.6	3.46	508.0	343.9	11.7	335.5	119.3	35.5
1990/91	146.7	3.55	520.5	352.0	12.3	344.9	126.3	36.6
1991/92	147.2	3.57	525.0	354.6	14.4	354.0	126.9	35.8
1992/93	146.4	3.60	526.9	355.6	14.9	358.6	123.9	34.6
1993/94	144.8	3.64	526.7	355.3	16.5	359.2	120.0	33.4
1994/95	147.4	3.67	540.2	364.5	20.7	366.0	118.5	32.4
1995/96	148.0	3.73	551.3	371.4	19.7	372.0	117.9	31.7
1996/97	149.7	3.76	563.6	380.3	18.9	379.0	119.2	31.5
1997/98	151.3	3.80	574.2	386.8	27.6	379.5	126.5	33.3
1998/99	152.2	3.85	585.6	394.1	24.9	387.3	133.3	34.4
1999/00	155.0	3.93	608.7	409.2	22.8	398.3	144.2	36.2
2000/01	151.5	3.91	591.8	397.4	24.5	396.3	145.2	36.6
2001/02	151.0	3.91	590.9	396.6	24.9	403.9	137.8	34.1
2002/03	147.8	3.88	572.9	384.4	25.6	408.7	113.6	27.8

Notes:

Stocks, exports, and consumption are expressed on a milled basis in marketing years. Trade is on a milled basis in calendar years. "Stocks as a Percent of Consumption" represents the ratio of marketing year ending stocks to total consumption. Trade statistics exclude intra-EU15 trade.

ENDNOTES TO GRAIN: WORLD MARKETS AND TRADE

REGIONAL TABLES

- 1) Includes Canada, Mexico, and the United States.
- 2) Includes Central America, the Caribbean, and South America.
- 3) Includes Azores, Cyprus, Iceland, Malta & Gozo, Norway, and Switzerland.
- 4) Includes Albania, Bosnia-Herzegovina, Bulgaria, Croatia, Czech Republic, Hungary, Macedonia, Poland, Romania, Serbia, Slovakia, and Slovenia.
- 5) Includes Bahrain, Iran, Iraq, Israel, Jordan, Kuwait, Lebanon, Oman, Qatar, Saudi Arabia, Syria, Turkey, United Arab Emirates, and Yemen.
- 6) Includes Algeria, Egypt, Libya, Morocco, and Tunisia.
- 7) Includes all other African countries except North Africa.
- 8) Includes Afghanistan, Bangladesh, Bhutan, India, Nepal, Pakistan, and Sri Lanka.
- 9) Includes all other Asian countries except South Asia.
- 10) Includes Australia, Fiji, New Zealand, and Papua New Guinea.

OTHER NOTES

Unless otherwise stated, stock data are based on an aggregate of differing local marketing years and should not be construed as representing world stock levels at a fixed point in time.

Current and historical data on the European Union in this issue refers to the EU-15.

Consumption statistics reflect total utilization, including food, feed, seed, and differences in marketing year imports and marketing year exports.

This circular was prepared by the Grain and Feed Division, Commodity and Marketing Programs, Foreign Agricultural Service, USDA, Washington DC 20250. Information is gathered from official statistics of foreign governments and other foreign source materials, reports of U.S. agricultural attaches and Foreign Service officers, results of office research, and related information. Further information may be obtained by writing the division or telephoning (202) 720-6219.

Note: The previous report in this series was the Grain: World Markets and Trade Foreign Agricultural Service Circular FG 07-02 July 2002. For further details on world grain production see World Agricultural Production, Foreign Agricultural Service Circular WAP 08-02 August 2002.

This circular is available in its entirety on the World Wide Web via the Foreign Agricultural Service Home Page. The address is:

<http://www.fas.usda.gov>