



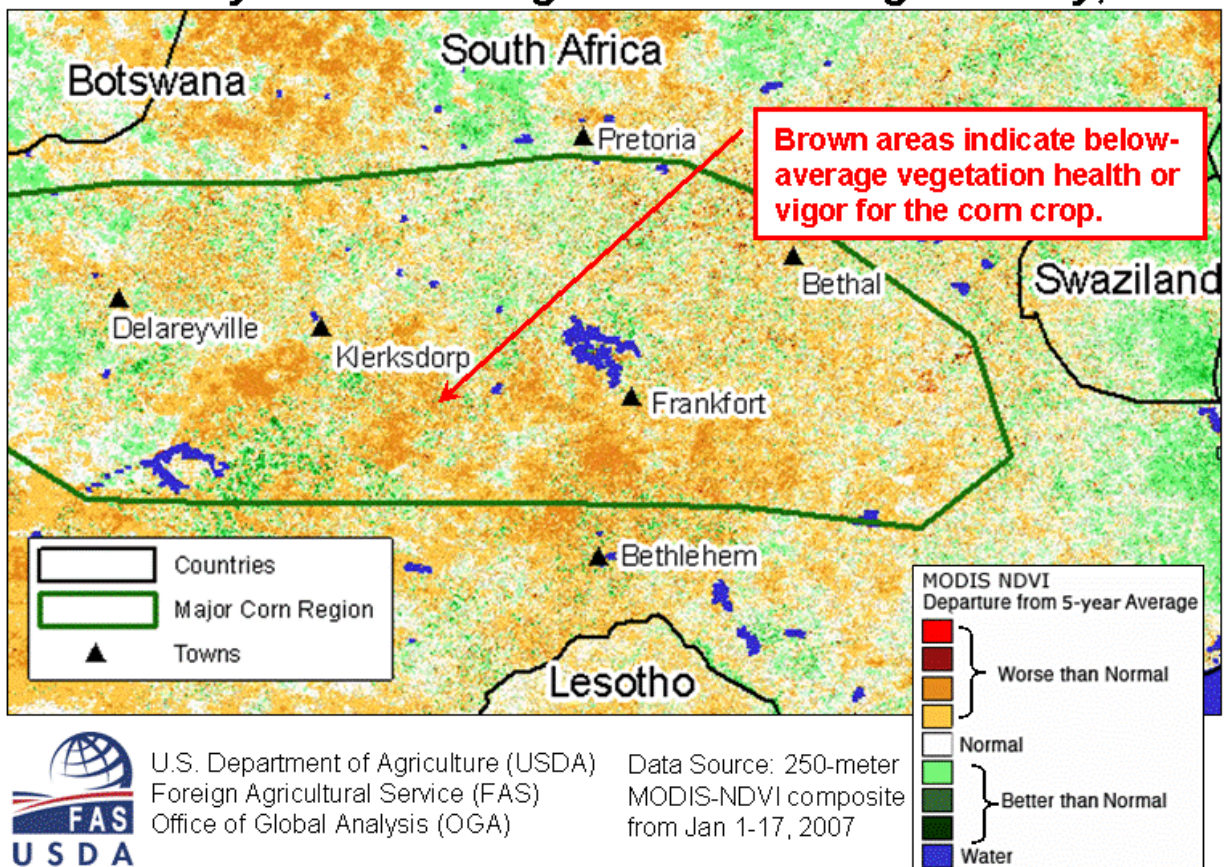
United States
Department of
Agriculture

Foreign
Agricultural
Service

Circular Series
WAP 02-07
February 2007

World Agricultural Production

Poor Vegetation Growth in South Africa's Corn Belt Caused by Below-average Rainfall during January, 2007



Lack of January Rainfall Raises Concerns in South Africa's Corn Belt

South Africa's 2006/07 corn production is forecast at 9.5 million tons, down 0.5 million tons from last month but up 2.6 million or 37 percent from last year. Area is estimated at 3.1 million hectares, down 0.1 million hectares from last month but up 1.1 million or 53 percent from last year. The large area increase is attributed to high international and local prices, and farmers planting corn again after reducing area last year due to low prices. The estimated yield of 3.06 MT/Ha is slightly below the 5-year average yield of 3.10 MT/Ha due to below-average January rainfall in the west where nearly 50 percent of the crop is grown.

Approved by the World Agricultural Outlook Board

On January 24, the National Crop Estimates Committee (NCEC) released the first corn area estimate for the commercial sector of 2.68 million hectares. This estimate does not include the developing sector corn area of approximately 420,000 hectares. Farmers initially intended to plant more corn this year due to high prices during time of planting, but lack of rainfall during the first week of January (end of planting season) prevented many farmers in the west from planting the intended amount.

The crop condition was above average at the end of December but recent dryness during January lowered crop conditions to average. Most of the crop is in the pollination stage or very close to it. Lack of rainfall during this critical period has stressed the crop and could cause irreversible damage to grain quality and yields, especially if significant rain is not received in the west during early February. Rainfall in February and March will largely determine final yields.

Argentina: Record Corn Crop Forecast

The USDA estimates Argentina corn production for 2006/07 at a record 21.0 million tons, up 2.0 million or 11 percent from last month and up 5.2 million or 33 percent from last year. Harvested area is estimated at 2.85 million hectares against 2.70 million last month and 2.44 million last year. According to forecasts from the Agriculture Secretariat and the Buenos Aires Grain Exchange (BOLSA), planted area for 2006/07 totaled 3.5 million hectares. The amount of unharvested area (including abandonment and silage) is forecast at 18 percent against 23 percent last year and the ten-year average of 20 percent. The lower loss/forage estimate is based in part on favorable grain prices which likely will reduce the area cut for silage. Yield is estimated to match the record of 7.37 tons per hectare achieved in 2004/05 because of increased fertilizer application and outstanding weather in the main production zones. Satellite-derived vegetative indices from mid-January indicate that overall vegetative vigor throughout Argentina's main corn and soybean region was better than average and significantly better than last year. The agricultural attaché in Buenos Aires reports that crops are observed to be in good condition and that yields are forecast to match or surpass the record yields from two years ago. (For more information, contact Nicole Wagner at 202-720-0882.)

Argentina: Soybean Production Forecast at Record Level

The USDA forecasts Argentina soybean production for 2006/07 at a record 44.0 million tons, up 1.5 million or 4 percent from last month and up 9 percent from last year's record crop. Harvested area is estimated at 15.8 million hectares, up 0.1 million from last month and up 0.6 million from last year's record. First-crop soybeans account for about 75 percent of total output. Favorable soil moisture conditions following the wheat harvest, combined with attractive international prices, likely encouraged farmers to boost the area of second-crop soybeans this year. In most production regions of Argentina, soybeans are currently advancing through the flowering or pod-filling stages. The U.S. agricultural attaché in Buenos Aires reports that current conditions for soybeans are estimated to be considerably better than two years ago, when yield reached 2.71 tons per hectare. The attaché reports also that this season's first case of rust was observed on February 1 in Entre Rios province (which accounts for about 10 percent of the country's total soybean area), but maintains that the outstanding current conditions still support the increased yield estimate. (For more information, contact Nicole Wagner at 202-720-0882.)

China Cotton Crop Exceeds Expectations

China's 2006/07 cotton crop is estimated at a record 30.9 million bales (6.73 million tons), up 18 percent from last year. Area increased by 6 percent to 5.35 million hectares, while the estimated yield of 1258 kilograms per hectare is up 12 percent from last year. The record yield is attributed to generally favorable weather during the growing season and excellent harvest conditions. On January 25, the National Bureau of Statistics reported that cotton output in 2006 reached a record 6.73 million tons. This matches estimates released by the Ministry of Agriculture and the China Cotton Association at the end of the year. Estimated output was higher than expected in Xinjiang province, the Yangtze valley, and several provinces on the North China Plain. Local officials reported higher quality, lower moisture content, and a larger proportion of high grade cotton than last year. China ranks first in world cotton production and accounts for about 26 percent of global output. China is also the world's largest importer of cotton. Despite this year's record crop, China is expected to import around 16.0 million bales in 2006/07, about 40 percent of global imports. (For more information, contact Paulette Sandene, 202-690-0133).

Australia: Sorghum Production Lower on Dry Weather

The USDA forecasts Australia sorghum production for 2006/07 at 1.9 million tons, down 0.2 million or 10 percent from last month and down 0.1 million or 6 percent from last year. Area is estimated at 0.8 million hectares, unchanged from last month and down 0.1 million or 10 percent from last year. Summer sorghum is Australia's main summer grain crop. The lower production forecast is based on a reduced yield outlook for the season due to continued dryness. (For more information, contact Jim Crutchfield at 202-690-0135.)

Vietnam Rice Production Revised Slightly

Small changes were made this month to Vietnam's 2006/07 rice area and production estimates. The estimated area of 7.3 million hectares is down 55,000 hectares from last month but similar to last year. Milled rice production for 2006/07 is estimated at 22.8 million tons (34.5 million, rough basis), up 1 percent from last month but unchanged from last year's revised crop. The estimated yield of 4.72 tons per hectare (rough basis) is up almost 2 percent from last month but close to last year's level. The rice crop in the Mekong River Delta was seriously damaged by insect pests and diseases during the 2006 growing season. According to preliminary statistics, production dropped by 958,000 tons, mostly from the summer-autumn crop. These losses were offset by higher rice output in central and northern Vietnam (up 1.04 million tons), resulting in a net increase of about 85,000 tons for the season. The production shortfall in the Mekong Delta, the source of more than 95 percent of Vietnam's exportable rice, led the government to institute a temporary export ban at the end of 2006. (For more information, contact Paulette Sandene, 202-690-0133).

Poland: Wheat and Corn Production Falls Further

Estimated production for Poland's 2006/07 wheat and corn crops was lowered based on official government statistics. Harvest results indicate that dryness and high temperatures during late spring and summer, followed by wet harvest weather, contributed to the reduced output. The 2006/07 wheat crop is estimated at 7.1 million tons, down 0.7 million or 9 percent from last month, and down 1.7 million or 19 percent from last year. Area is estimated at 2.2 million hectares, down 0.1 million from last month but similar to 2005/06. Yield is estimated at 3.23 tons per hectare, the lowest since 2000/01.

Corn production for the 2006/07 season is estimated at 1.2 million tons, down 0.5 million or 29 percent from last month, and down 0.7 million or 38 percent below last year. Area is estimated to be 0.3 million hectares, down 9 percent from last month and 10 percent from last year. Yield is estimated at 4.0 tons per hectare, the lowest in over ten years. (For more information, contact Bryan Purcell, 202-690-0138).

This report uses information from the Foreign Agricultural Service's (FAS) global network of agricultural attachés and counselors, official statistics of foreign governments and other foreign source materials, and the analysis of economic data and satellite imagery. Estimates of foreign area, yield, and production are from the International Production Assessment Branch, FAS, and are reviewed by USDA's Inter-Agency Commodity Estimates Committee. Estimates of U.S. area, yield, and production are from USDA's National Agricultural Statistics Service. Numbers within the report may not add to totals because of rounding. This report reflects official USDA estimates released in the World Agricultural Supply and Demand Estimates (WASDE-442), February 9, 2007.

Printed copies are available from the National Technical Information Service. Download an order form at http://www.ntis.gov/products/specialty/usda/fas_a-g.asp, or call NTIS at 1-800-363-2068.

The FAS International Production Assessment Branch prepared this report. The next issue of World Agricultural Production will be released after 9:30 a.m. Eastern Time, March 9, 2007.

Conversion Table

Metric tons to bushels

| | | |
|--------------------|---|----------------|
| Wheat, soybeans | = | MT * 36.7437 |
| Corn, sorghum, rye | = | MT * 39.36825 |
| Barley | = | MT * 45.929625 |
| Oats | = | MT * 68.894438 |

Metric tons to 480-lb bales

| | | |
|--------|---|---------------|
| Cotton | = | MT * 4.592917 |
|--------|---|---------------|

Metric tons to hundredweight

| | | |
|------|---|---------------|
| Rice | = | MT * 22.04622 |
|------|---|---------------|

Area & weight

| | | |
|------------|---|-----------------|
| 1 hectare | = | 2.471044 acres |
| 1 kilogram | = | 2.204622 pounds |

For further information, contact:
U.S. Department of Agriculture
Foreign Agricultural Service
Office of Global Analysis
International Production Assessment Branch
Ag Box 1045, Room 6541, South Building
Washington, DC 20250-1045
Telephone: (202) 720-0888 Fax: (202) 720-8880

GENERAL INFORMATION

| | | |
|-----------------------------|---------------|-------------------------------------|
| Division Director | Larry Deaton | 202-720-3423 deaton@fas.usda.gov |
| Branch Chief | Paul Provance | 202-720-0881 provance@fas.usda.gov |
| Remote Sensing Specialist | Brad Doorn | 202-690-0131 doorn@fas.usda.gov |
| USDA Remote Sensing Advisor | Glenn Bethel | 202-720-1280 bethel@fas.usda.gov |
| Management Analyst | Mary Jackson | 202-720-0886 jacksonma@fas.usda.gov |

COUNTRY- AND REGION-SPECIFIC INFORMATION

| | | |
|--|------------------|---------------------------------------|
| South America | Nicole Wagner | 202-720-0882 nicole.c.wagner@usda.gov |
| Europe and North Africa | Bryan Purcell | 202-690-0138 bryan.purcell@usda.gov |
| FSU-12, Canada, Mexico, Central America | Mark Lindeman | 202-690-0143 lindeman@fas.usda.gov |
| China, East and Southeast Asia | Paulette Sandene | 202-690-0133 sandene@fas.usda.gov |
| South Asia, Indonesia, Australia, & New Zealand | Jim Crutchfield | 202-690-0135 crutchfield@fas.usda.gov |
| Sub-Saharan Africa, Middle East | Curt Reynolds | 202-690-0134 reynoldsc@fas.usda.gov |
| Western United States | Carl Gernazio | 202-690-0136 gernazio@fas.usda.gov |
| Eastern United States | Michael Shean | 202-720-7366 shean@fas.usda.gov |

Table 01 World Crop Production Summary
1000 Metric Tons

| Commodity | World - | Total Foreign | North America | | | EU-25 - | Former Soviet | | Asia (WAP) | | | | | South America | | Selected Other | | | All Others | |
|---------------------------|---------|---------------|---------------|----------|----------|---------|---------------|-----------|------------|---------|-----------|----------|----------|---------------|----------|----------------|--------------|----------|------------|--|
| | | | United States | Canada - | Mexico - | | Russia - | Ukraine - | China - | India - | Indonesia | Pakistan | Thailand | Argentina | Brazil - | Australia | South Africa | Turkey - | | |
| ---Million metric tons--- | | | | | | | | | | | | | | | | | | | | |
| Wheat | | | | | | | | | | | | | | | | | | | | |
| 2004/05 | 628.6 | 569.8 | 58.7 | 25.9 | 2.4 | 136.8 | 45.4 | 17.5 | 92.0 | 72.2 | nr | 19.5 | nr | 16.0 | 5.8 | 22.6 | 1.7 | 18.5 | 93.7 | |
| 2005/06 prel. | 620.1 | 562.8 | 57.3 | 26.8 | 3.0 | 122.7 | 47.7 | 18.7 | 97.5 | 68.6 | nr | 21.5 | nr | 14.5 | 4.9 | 24.5 | 1.9 | 18.0 | 92.6 | |
| 2006/07 proj. | | | | | | | | | | | | | | | | | | | | |
| Jan | 590.8 | 541.4 | 49.3 | 27.3 | 3.1 | 117.9 | 44.9 | 14.3 | 103.5 | 68.0 | nr | 21.7 | nr | 14.2 | 2.3 | 10.5 | 2.2 | 18.0 | 93.6 | |
| Feb | 592.0 | 542.7 | 49.3 | 27.3 | 3.1 | 117.3 | 44.9 | 14.0 | 103.5 | 68.0 | nr | 21.7 | nr | 14.2 | 2.3 | 10.5 | 2.2 | 18.0 | 95.8 | |
| Coarse Grains | | | | | | | | | | | | | | | | | | | | |
| 2004/05 | 1,014.1 | 694.7 | 319.4 | 26.4 | 28.9 | 150.2 | 29.6 | 23.0 | 138.3 | 33.6 | 7.2 | 2.0 | 4.4 | 24.9 | 37.9 | 11.6 | 12.2 | 11.0 | 153.4 | |
| 2005/06 prel. | 977.6 | 678.8 | 298.8 | 26.0 | 25.8 | 131.8 | 27.6 | 18.1 | 147.7 | 34.4 | 6.9 | 2.0 | 4.3 | 19.2 | 44.5 | 13.8 | 7.3 | 11.9 | 157.5 | |
| 2006/07 proj. | | | | | | | | | | | | | | | | | | | | |
| Jan | 962.4 | 682.3 | 280.1 | 23.5 | 29.1 | 126.4 | 30.2 | 20.0 | 151.4 | 33.7 | 6.6 | 2.0 | 4.5 | 23.6 | 44.8 | 7.8 | 10.5 | 11.0 | 157.3 | |
| Feb | 967.2 | 687.1 | 280.1 | 23.5 | 29.1 | 126.4 | 30.2 | 19.2 | 151.4 | 33.9 | 6.6 | 2.0 | 4.5 | 25.6 | 48.8 | 7.6 | 10.0 | 10.8 | 157.6 | |
| Rice, Milled | | | | | | | | | | | | | | | | | | | | |
| 2004/05 | 400.5 | 393.0 | 7.5 | nr | 0.2 | 1.9 | 0.3 | 0.1 | 125.4 | 83.1 | 34.8 | 4.9 | 17.4 | 0.7 | 9.0 | 0.2 | nr | 0.3 | 114.8 | |
| 2005/06 prel. | 416.3 | 409.2 | 7.1 | nr | 0.2 | 1.7 | 0.4 | 0.1 | 126.4 | 91.0 | 35.0 | 5.5 | 18.2 | 0.8 | 7.9 | 0.7 | nr | 0.4 | 120.9 | |
| 2006/07 proj. | | | | | | | | | | | | | | | | | | | | |
| Jan | 415.0 | 408.9 | 6.2 | nr | 0.2 | 1.7 | 0.4 | 0.1 | 128.0 | 91.0 | 33.7 | 5.6 | 18.3 | 0.8 | 7.7 | 0.1 | nr | 0.4 | 121.0 | |
| Feb | 415.3 | 409.1 | 6.2 | nr | 0.2 | 1.7 | 0.4 | 0.1 | 128.0 | 91.0 | 33.7 | 5.6 | 18.3 | 0.8 | 7.7 | 0.1 | nr | 0.4 | 121.2 | |
| Total Grains | | | | | | | | | | | | | | | | | | | | |
| 2004/05 | 2,043.1 | 1,657.5 | 385.6 | 52.3 | 31.6 | 288.9 | 75.3 | 40.6 | 355.6 | 188.9 | 42.0 | 26.4 | 21.8 | 41.6 | 52.7 | 34.4 | 13.9 | 29.8 | 361.9 | |
| 2005/06 prel. | 2,014.0 | 1,650.9 | 363.2 | 52.8 | 29.0 | 256.2 | 75.7 | 36.9 | 371.6 | 194.1 | 41.9 | 29.0 | 22.5 | 34.5 | 57.2 | 39.0 | 9.2 | 30.3 | 371.0 | |
| 2006/07 proj. | | | | | | | | | | | | | | | | | | | | |
| Jan | 1,968.2 | 1,632.6 | 335.6 | 50.8 | 32.4 | 246.0 | 75.5 | 34.3 | 382.9 | 192.7 | 40.3 | 29.3 | 22.7 | 38.5 | 54.7 | 18.3 | 12.7 | 29.5 | 371.8 | |
| Feb | 1,974.5 | 1,638.9 | 335.6 | 50.8 | 32.4 | 245.4 | 75.5 | 33.2 | 382.9 | 192.9 | 40.3 | 29.3 | 22.7 | 40.5 | 58.7 | 18.1 | 12.1 | 29.3 | 374.7 | |
| Oilseeds | | | | | | | | | | | | | | | | | | | | |
| 2004/05 | 381.0 | 285.1 | 95.9 | 10.8 | 0.7 | 21.1 | 5.6 | 3.6 | 58.0 | 29.4 | 7.2 | 5.5 | 0.6 | 43.4 | 55.7 | 2.6 | 1.0 | 2.1 | 37.8 | |
| 2005/06 prel. | 388.2 | 292.7 | 95.5 | 12.9 | 0.7 | 20.7 | 7.4 | 5.6 | 55.9 | 30.7 | 7.7 | 5.0 | 0.6 | 44.9 | 57.1 | 2.5 | 1.1 | 2.0 | 37.9 | |
| 2006/07 proj. | | | | | | | | | | | | | | | | | | | | |
| Jan | 395.4 | 298.6 | 96.9 | 12.8 | 0.7 | 21.2 | 8.0 | 6.5 | 56.7 | 30.2 | 8.2 | 5.0 | 0.6 | 47.3 | 58.6 | 1.1 | 1.0 | 2.1 | 38.8 | |
| Feb | 397.1 | 300.2 | 96.9 | 12.8 | 0.7 | 21.1 | 8.1 | 6.8 | 56.7 | 30.2 | 8.2 | 5.0 | 0.6 | 48.8 | 58.6 | 1.1 | 1.0 | 2.1 | 38.5 | |
| Cotton | | | | | | | | | | | | | | | | | | | | |
| 2004/05 | 120.2 | 96.9 | 23.3 | nr | 0.6 | 2.3 | nr | nr | 29.0 | 19.0 | 0.0 | 11.1 | 0.1 | 0.7 | 5.9 | 3.0 | 0.1 | 4.2 | 21.0 | |
| 2005/06 prel. | 114.1 | 90.2 | 23.9 | nr | 0.6 | 2.5 | nr | nr | 26.2 | 19.2 | 0.0 | 9.9 | 0.1 | 0.6 | 4.7 | 2.8 | 0.1 | 3.6 | 20.0 | |
| 2006/07 proj. | | | | | | | | | | | | | | | | | | | | |
| Jan | 116.7 | 95.0 | 21.7 | nr | 0.6 | 1.6 | nr | nr | 30.8 | 21.0 | 0.0 | 9.6 | 0.1 | 0.8 | 6.0 | 1.3 | 0.1 | 4.0 | 19.1 | |
| Feb | 116.6 | 94.8 | 21.7 | nr | 0.6 | 1.6 | nr | nr | 30.9 | 21.0 | 0.0 | 9.7 | 0.1 | 0.8 | 6.0 | 1.2 | 0.1 | 4.0 | 18.9 | |

1/ Includes wheat, coarse grains, and rice (milled) shown above.

Table 02 Wheat Area, Yield, and Production
1000 Metric Tons

| Country / Region | Area (Million hectares) | | | | Yield (Metric tons per hectare) | | | | Production (Million metric tons) | | | | Change in Production | | | |
|----------------------------|----------------------------|--------------------|----------------|-------------------------|------------------------------------|--------------------|----------------|-------------------------|-------------------------------------|--------------------|----------------|-------------------------|------------------------|---------|-----------------------|---------|
| | Prel. 2004/05 | 2006/07 2005/06 | 2006/07 Jan | Proj. 2006/07 Feb | Prel. 2004/05 | 2006/07 2005/06 | 2006/07 Jan | Proj. 2006/07 Feb | Prel. 2004/05 | 2006/07 2005/06 | 2006/07 Jan | Proj. 2006/07 Feb | From last month MMT | Percent | From last year MMT | Percent |
| World | 218.76 | 217.92 | 211.46 | 211.61 | 2.87 | 2.85 | 2.79 | 2.80 | 628.59 | 620.13 | 590.75 | 592.03 | 1.27 | 0.22 | -28.10 | -4.53 |
| United States | 20.23 | 20.28 | 18.94 | 18.94 | 2.90 | 2.82 | 2.60 | 2.60 | 58.74 | 57.28 | 49.32 | 49.32 | 0.00 | 0.00 | -7.96 | -13.90 |
| Total Foreign | 198.52 | 197.64 | 192.51 | 192.67 | 2.87 | 2.85 | 2.81 | 2.82 | 569.85 | 562.85 | 541.44 | 542.71 | 1.27 | 0.24 | -20.14 | -3.58 |
| China, Peoples | 21.63 | 22.79 | 23.40 | 23.40 | 4.25 | 4.28 | 4.42 | 4.42 | 91.95 | 97.45 | 103.50 | 103.50 | 0.00 | 0.00 | 6.05 | 6.21 |
| South Asia | | | | | | | | | | | | | | | | |
| India | 26.62 | 26.50 | 25.00 | 25.00 | 2.71 | 2.59 | 2.72 | 2.72 | 72.15 | 68.64 | 68.00 | 68.00 | 0.00 | 0.00 | -0.64 | -0.93 |
| Pakistan | 8.22 | 8.30 | 8.30 | 8.30 | 2.37 | 2.59 | 2.61 | 2.61 | 19.50 | 21.50 | 21.70 | 21.70 | 0.00 | 0.00 | 0.20 | 0.93 |
| Afghanistan | 2.20 | 2.20 | 2.20 | 2.20 | 1.82 | 1.94 | 2.00 | 2.00 | 4.00 | 4.27 | 4.40 | 4.40 | 0.00 | 0.00 | 0.13 | 3.04 |
| Former Soviet Union | | | | | | | | | | | | | | | | |
| Russian Federation | 24.20 | 25.40 | 23.70 | 23.70 | 1.88 | 1.88 | 1.89 | 1.89 | 45.40 | 47.70 | 44.90 | 44.90 | 0.00 | 0.00 | -2.80 | -5.87 |
| Ukraine | 5.90 | 6.57 | 5.40 | 5.50 | 2.97 | 2.85 | 2.65 | 2.55 | 17.50 | 18.70 | 14.30 | 14.00 | -0.30 | -2.10 | -4.70 | -25.13 |
| Kazakhstan, Republic | 11.80 | 11.80 | 12.20 | 12.40 | 0.84 | 0.93 | 0.94 | 1.09 | 9.95 | 11.00 | 11.50 | 13.50 | 2.00 | 17.39 | 2.50 | 22.73 |
| Uzbekistan, Republic | 1.40 | 1.45 | 1.30 | 1.30 | 3.75 | 4.00 | 4.46 | 4.50 | 5.25 | 5.80 | 5.80 | 5.85 | 0.05 | 0.86 | 0.05 | 0.86 |
| European Union | | | | | | | | | | | | | | | | |
| France | 5.24 | 5.29 | 5.27 | 5.27 | 7.58 | 6.98 | 6.78 | 6.78 | 39.71 | 36.92 | 35.68 | 35.68 | 0.00 | 0.00 | -1.24 | -3.36 |
| Germany | 3.11 | 3.17 | 3.12 | 3.12 | 8.17 | 7.46 | 7.21 | 7.21 | 25.43 | 23.69 | 22.52 | 22.52 | 0.00 | 0.00 | -1.18 | -4.97 |
| United Kingdom | 1.99 | 1.87 | 1.82 | 1.82 | 7.77 | 7.96 | 8.07 | 8.09 | 15.47 | 14.86 | 14.70 | 14.74 | 0.04 | 0.29 | -0.12 | -0.83 |
| Poland | 2.31 | 2.20 | 2.30 | 2.20 | 4.28 | 3.98 | 3.39 | 3.23 | 9.89 | 8.77 | 7.80 | 7.10 | -0.70 | -8.97 | -1.67 | -19.05 |
| Italy | 2.35 | 2.03 | 1.79 | 1.79 | 3.74 | 3.49 | 3.65 | 3.65 | 8.79 | 7.08 | 6.52 | 6.52 | 0.00 | 0.00 | -0.55 | -7.82 |
| Spain | 2.15 | 2.16 | 2.20 | 2.20 | 3.30 | 1.76 | 2.50 | 2.50 | 7.11 | 3.80 | 5.50 | 5.50 | 0.00 | 0.00 | 1.70 | 44.74 |
| Denmark | 0.68 | 0.68 | 0.68 | 0.68 | 7.09 | 7.11 | 7.11 | 7.11 | 4.79 | 4.80 | 4.80 | 4.80 | 0.00 | 0.00 | 0.00 | 0.00 |
| Hungary | 1.15 | 1.13 | 1.08 | 1.08 | 5.04 | 4.51 | 4.06 | 4.06 | 5.80 | 5.10 | 4.38 | 4.38 | 0.00 | 0.00 | -0.72 | -14.14 |
| Canada | 9.86 | 9.83 | 10.55 | 10.55 | 2.62 | 2.72 | 2.59 | 2.59 | 25.86 | 26.78 | 27.30 | 27.30 | 0.00 | 0.00 | 0.53 | 1.96 |
| Australia | 13.77 | 12.60 | 11.30 | 11.30 | 1.64 | 1.94 | 0.93 | 0.93 | 22.60 | 24.50 | 10.50 | 10.50 | 0.00 | 0.00 | -14.00 | -57.14 |
| Middle East | | | | | | | | | | | | | | | | |
| Turkey | 8.60 | 8.60 | 8.60 | 8.60 | 2.15 | 2.09 | 2.09 | 2.09 | 18.50 | 18.00 | 18.00 | 18.00 | 0.00 | 0.00 | 0.00 | 0.00 |
| Iran | 6.80 | 6.50 | 6.40 | 6.40 | 2.06 | 2.23 | 2.19 | 2.19 | 14.00 | 14.50 | 14.00 | 14.00 | 0.00 | 0.00 | -0.50 | -3.45 |
| Syria | 1.70 | 1.70 | 1.70 | 1.70 | 2.53 | 2.76 | 2.65 | 2.65 | 4.30 | 4.70 | 4.50 | 4.50 | 0.00 | 0.00 | -0.20 | -4.26 |
| North Africa | | | | | | | | | | | | | | | | |
| Egypt | 1.09 | 1.26 | 1.26 | 1.26 | 6.56 | 6.50 | 6.51 | 6.51 | 7.18 | 8.18 | 8.20 | 8.20 | 0.00 | 0.00 | 0.02 | 0.20 |
| Morocco | 3.06 | 2.97 | 3.10 | 3.10 | 1.81 | 1.03 | 1.97 | 1.97 | 5.54 | 3.04 | 6.10 | 6.10 | 0.00 | 0.00 | 3.06 | 100.46 |
| Argentina | 6.10 | 5.00 | 5.20 | 5.20 | 2.62 | 2.90 | 2.73 | 2.73 | 16.00 | 14.50 | 14.20 | 14.20 | 0.00 | 0.00 | -0.30 | -2.07 |
| Other Europe | | | | | | | | | | | | | | | | |
| Romania | 1.80 | 2.10 | 1.80 | 1.80 | 3.61 | 2.81 | 2.64 | 2.64 | 6.50 | 5.90 | 4.75 | 4.75 | 0.00 | 0.00 | -1.15 | -19.49 |
| Bulgaria | 0.95 | 1.00 | 0.92 | 0.92 | 3.79 | 3.10 | 3.47 | 3.47 | 3.60 | 3.10 | 3.20 | 3.20 | 0.00 | 0.00 | 0.10 | 3.23 |
| Others | 23.84 | 22.55 | 21.93 | 21.89 | 2.65 | 2.64 | 2.49 | 2.51 | 63.08 | 59.56 | 54.69 | 54.87 | 0.18 | 0.33 | -4.69 | -7.88 |

World and Selected Countries and Regions

2/9/2007 9:33:00 AM

Table 03 Total Coarse Grain Area, Yield, and Production
1000 Metric Tons

| Country / Region | Area (Million hectares) | | | | Yield (Metric tons per hectare) | | | | Production (Million metric tons) | | | | Change in Production | | | |
|----------------------------|----------------------------|--------------------|----------------|-------------------------|------------------------------------|--------------------|----------------|-------------------------|-------------------------------------|--------------------|----------------|-------------------------|------------------------|---------|-----------------------|---------|
| | Prel. 2004/05 | 2006/07 2005/06 | 2006/07 Jan | Proj. 2006/07 Feb | Prel. 2004/05 | 2006/07 2005/06 | 2006/07 Jan | Proj. 2006/07 Feb | Prel. 2004/05 | 2006/07 2005/06 | 2006/07 Jan | Proj. 2006/07 Feb | From last month MMT | Percent | From last year MMT | Percent |
| World | 300.42 | 301.30 | 303.34 | 303.54 | 3.38 | 3.24 | 3.17 | 3.19 | 1,014.0 | 977.60 | 962.38 | 967.21 | 4.82 | 0.50 | -10.39 | -1.06 |
| United States | 34.91 | 34.89 | 32.53 | 32.53 | 9.15 | 8.56 | 8.61 | 8.61 | 319.42 | 298.76 | 280.11 | 280.11 | 0.00 | 0.00 | -18.65 | -6.24 |
| Total Foreign | 265.51 | 266.41 | 270.81 | 271.01 | 2.62 | 2.55 | 2.52 | 2.54 | 694.66 | 678.83 | 682.27 | 687.09 | 4.82 | 0.71 | 8.26 | 1.22 |
| North and South | | | | | | | | | | | | | | | | |
| Canada | 6.71 | 6.57 | 6.17 | 6.17 | 3.94 | 3.96 | 3.81 | 3.81 | 26.45 | 26.04 | 23.49 | 23.49 | 0.00 | 0.00 | -2.55 | -9.77 |
| Mexico | 9.77 | 8.58 | 9.46 | 9.46 | 2.96 | 3.01 | 3.08 | 3.08 | 28.95 | 25.83 | 29.13 | 29.13 | 0.00 | 0.00 | 3.30 | 12.76 |
| Argentina | 3.98 | 3.47 | 3.96 | 4.11 | 6.26 | 5.55 | 5.95 | 6.22 | 24.90 | 19.22 | 23.57 | 25.57 | 2.00 | 8.48 | 6.35 | 33.03 |
| Brazil | 12.87 | 14.20 | 13.97 | 14.27 | 2.94 | 3.13 | 3.20 | 3.42 | 37.87 | 44.47 | 44.76 | 48.76 | 4.00 | 8.94 | 4.29 | 9.63 |
| European Union | | | | | | | | | | | | | | | | |
| France | 4.03 | 3.83 | 3.72 | 3.72 | 7.56 | 7.08 | 6.88 | 6.93 | 30.46 | 27.09 | 25.56 | 25.73 | 0.17 | 0.66 | -1.35 | -4.99 |
| Germany | 3.84 | 3.67 | 3.60 | 3.60 | 6.69 | 6.08 | 5.87 | 5.87 | 25.67 | 22.29 | 21.14 | 21.14 | 0.00 | 0.00 | -1.15 | -5.16 |
| Poland | 6.02 | 6.02 | 6.10 | 6.07 | 3.27 | 3.00 | 2.51 | 2.44 | 19.67 | 18.07 | 15.31 | 14.81 | -0.50 | -3.27 | -3.26 | -18.05 |
| Czech Republic | 0.75 | 0.78 | 0.73 | 0.75 | 5.02 | 4.47 | 3.98 | 3.87 | 3.74 | 3.50 | 2.92 | 2.92 | 0.00 | 0.00 | -0.58 | -16.60 |
| Hungary | 1.83 | 1.80 | 1.78 | 1.78 | 5.78 | 5.90 | 5.47 | 5.64 | 10.57 | 10.62 | 9.76 | 10.06 | 0.30 | 3.07 | -0.56 | -5.27 |
| Lithuania | 0.50 | 0.52 | 0.51 | 0.51 | 2.82 | 2.66 | 2.57 | 2.57 | 1.41 | 1.39 | 1.31 | 1.31 | 0.00 | 0.00 | -0.08 | -5.42 |
| Former Soviet Union | | | | | | | | | | | | | | | | |
| Russian Federation | 17.45 | 16.20 | 17.35 | 17.10 | 1.70 | 1.70 | 1.74 | 1.77 | 29.60 | 27.60 | 30.20 | 30.20 | 0.00 | 0.00 | 2.60 | 9.42 |
| Ukraine | 8.44 | 7.19 | 7.82 | 7.82 | 2.73 | 2.52 | 2.55 | 2.45 | 23.00 | 18.14 | 19.95 | 19.18 | -0.78 | -3.88 | 1.04 | 5.71 |
| Kazakhstan, Republic | 2.07 | 1.97 | 1.97 | 2.17 | 0.98 | 1.03 | 1.03 | 1.12 | 2.02 | 2.02 | 2.02 | 2.42 | 0.40 | 19.80 | 0.40 | 19.80 |
| China, Peoples | 28.22 | 29.13 | 29.85 | 29.85 | 4.90 | 5.07 | 5.07 | 5.07 | 138.25 | 147.70 | 151.44 | 151.44 | 0.00 | 0.00 | 3.74 | 2.53 |
| Romania | 3.65 | 3.66 | 3.18 | 3.18 | 3.78 | 3.23 | 3.05 | 3.05 | 13.81 | 11.84 | 9.68 | 9.68 | 0.00 | 0.00 | -2.16 | -18.28 |
| Turkey | 4.56 | 4.81 | 4.61 | 4.56 | 2.42 | 2.49 | 2.40 | 2.38 | 11.05 | 11.95 | 11.05 | 10.85 | -0.20 | -1.81 | -1.10 | -9.21 |
| India | 28.35 | 28.06 | 28.55 | 28.65 | 1.18 | 1.23 | 1.18 | 1.18 | 33.57 | 34.39 | 33.70 | 33.90 | 0.20 | 0.59 | -0.49 | -1.42 |
| Southeast Asia | | | | | | | | | | | | | | | | |
| Indonesia | 3.30 | 3.31 | 3.25 | 3.25 | 2.18 | 2.08 | 2.03 | 2.03 | 7.20 | 6.90 | 6.60 | 6.60 | 0.00 | 0.00 | -0.30 | -4.35 |
| Philippines | 2.40 | 2.50 | 2.50 | 2.50 | 2.10 | 2.36 | 2.32 | 2.32 | 5.05 | 5.90 | 5.80 | 5.80 | 0.00 | 0.00 | -0.10 | -1.69 |
| Thailand | 1.22 | 1.20 | 1.22 | 1.22 | 3.63 | 3.58 | 3.65 | 3.65 | 4.41 | 4.30 | 4.45 | 4.45 | 0.00 | 0.00 | 0.15 | 3.49 |
| Australia | 6.46 | 6.64 | 5.95 | 5.95 | 1.79 | 2.07 | 1.30 | 1.27 | 11.57 | 13.76 | 7.76 | 7.56 | -0.20 | -2.58 | -6.20 | -45.09 |
| South Africa, | 4.11 | 2.88 | 4.10 | 3.98 | 2.97 | 2.54 | 2.57 | 2.51 | 12.21 | 7.31 | 10.54 | 9.98 | -0.56 | -5.27 | 2.67 | 36.55 |
| Others | 105.03 | 109.45 | 110.47 | 110.36 | 1.84 | 1.72 | 1.74 | 1.74 | 193.23 | 188.52 | 192.14 | 192.13 | -0.02 | -0.01 | 3.61 | 1.91 |

World and Selected Countries and Regions

2/9/2007 9:33:11 AM

Table 04 Corn Area, Yield, and Production
1000 Metric Tons

| Country / Region | Area (Million hectares) | | | | Yield (Metric tons per hectare) | | | | Production (Million metric tons) | | | | Change in Production | | | |
|---------------------------|----------------------------|---------|---------------|--------|------------------------------------|---------|---------------|------|-------------------------------------|---------|---------------|--------|----------------------|---------|----------------|---------|
| | Prel. | | 2006/07 Proj. | | Prel. | | 2006/07 Proj. | | Prel. | | 2006/07 Proj. | | From last month | | From last year | |
| | 2004/05 | 2005/06 | Jan | Feb | 2004/05 | 2005/06 | Jan | Feb | 2004/05 | 2005/06 | Jan | Feb | MMT | Percent | MMT | Percent |
| World | 144.72 | 145.63 | 146.11 | 146.38 | 4.92 | 4.78 | 4.60 | 4.73 | 712.27 | 695.60 | 687.20 | 692.42 | 5.23 | 0.76 | -3.17 | -0.46 |
| United States | 29.80 | 30.40 | 28.59 | 28.59 | 10.06 | 9.29 | 9.36 | 9.36 | 299.91 | 282.31 | 267.60 | 267.60 | 0.00 | 0.00 | -14.71 | -5.21 |
| Total Foreign | 114.92 | 115.24 | 117.52 | 117.79 | 3.59 | 3.59 | 3.57 | 3.61 | 412.36 | 413.29 | 419.60 | 424.83 | 5.23 | 1.25 | 11.54 | 2.79 |
| China, Peoples | 25.45 | 26.36 | 27.00 | 27.00 | 5.12 | 5.29 | 5.30 | 5.30 | 130.29 | 139.37 | 143.00 | 143.00 | 0.00 | 0.00 | 3.64 | 2.61 |
| South America | | | | | | | | | | | | | | | | |
| Brazil | 11.56 | 12.90 | 12.70 | 13.00 | 3.03 | 3.23 | 3.31 | 3.54 | 35.00 | 41.70 | 42.00 | 46.00 | 4.00 | 9.52 | 4.30 | 10.31 |
| Argentina | 2.78 | 2.44 | 2.70 | 2.85 | 7.37 | 6.48 | 7.04 | 7.37 | 20.50 | 15.80 | 19.00 | 21.00 | 2.00 | 10.53 | 5.20 | 32.91 |
| Mexico | 7.69 | 6.64 | 7.30 | 7.30 | 2.87 | 2.94 | 3.01 | 3.01 | 22.05 | 19.50 | 22.00 | 22.00 | 0.00 | 0.00 | 2.50 | 12.82 |
| European Union | | | | | | | | | | | | | | | | |
| France | 1.77 | 1.61 | 1.44 | 1.44 | 9.16 | 8.51 | 8.44 | 8.56 | 16.18 | 13.68 | 12.15 | 12.32 | 0.17 | 1.40 | -1.36 | -9.95 |
| Italy | 1.20 | 1.12 | 1.06 | 1.06 | 9.02 | 8.94 | 8.68 | 8.68 | 10.80 | 10.00 | 9.20 | 9.20 | 0.00 | 0.00 | -0.80 | -8.00 |
| Hungary | 1.20 | 1.20 | 1.22 | 1.22 | 6.83 | 7.25 | 6.64 | 6.89 | 8.20 | 8.70 | 8.10 | 8.40 | 0.30 | 3.70 | -0.30 | -3.45 |
| Poland | 0.41 | 0.34 | 0.33 | 0.30 | 5.69 | 5.81 | 5.15 | 4.00 | 2.34 | 1.95 | 1.70 | 1.20 | -0.50 | -29.41 | -0.75 | -38.30 |
| India | 7.50 | 7.80 | 7.70 | 7.80 | 1.89 | 1.93 | 1.88 | 1.88 | 14.18 | 15.09 | 14.50 | 14.70 | 0.20 | 1.38 | -0.39 | -2.58 |
| Canada | 1.07 | 1.10 | 1.10 | 1.10 | 8.25 | 8.63 | 8.45 | 8.45 | 8.84 | 9.46 | 9.30 | 9.30 | 0.00 | 0.00 | -0.16 | -1.70 |
| Romania | 3.00 | 2.95 | 2.60 | 2.60 | 4.00 | 3.49 | 3.27 | 3.27 | 12.00 | 10.30 | 8.50 | 8.50 | 0.00 | 0.00 | -1.80 | -17.48 |
| Indonesia | 3.30 | 3.31 | 3.25 | 3.25 | 2.18 | 2.08 | 2.03 | 2.03 | 7.20 | 6.90 | 6.60 | 6.60 | 0.00 | 0.00 | -0.30 | -4.35 |
| Ukraine | 2.30 | 1.66 | 1.70 | 1.70 | 3.83 | 4.31 | 3.82 | 3.76 | 8.80 | 7.15 | 6.50 | 6.40 | -0.10 | -1.54 | -0.75 | -10.49 |
| Serbia and | 1.20 | 1.22 | 1.25 | 1.25 | 5.47 | 5.41 | 5.28 | 5.28 | 6.57 | 6.60 | 6.60 | 6.60 | 0.00 | 0.00 | 0.00 | 0.00 |
| Egypt | 0.71 | 0.71 | 0.72 | 0.72 | 8.25 | 8.25 | 8.21 | 8.21 | 5.84 | 5.86 | 5.87 | 5.87 | 0.00 | 0.00 | 0.01 | 0.17 |
| Philippines | 2.40 | 2.50 | 2.50 | 2.50 | 2.10 | 2.36 | 2.32 | 2.32 | 5.05 | 5.90 | 5.80 | 5.80 | 0.00 | 0.00 | -0.10 | -1.69 |
| Vietnam | 1.04 | 1.10 | 1.15 | 1.15 | 3.60 | 3.64 | 3.80 | 3.80 | 3.76 | 4.00 | 4.37 | 4.37 | 0.00 | 0.00 | 0.37 | 9.25 |
| Thailand | 1.13 | 1.11 | 1.13 | 1.13 | 3.73 | 3.69 | 3.76 | 3.76 | 4.21 | 4.10 | 4.25 | 4.25 | 0.00 | 0.00 | 0.15 | 3.66 |
| Russian Federation | 0.90 | 0.85 | 1.00 | 1.00 | 3.89 | 3.76 | 3.60 | 3.60 | 3.50 | 3.20 | 3.60 | 3.60 | 0.00 | 0.00 | 0.40 | 12.50 |
| Sub-Saharan Africa | | | | | | | | | | | | | | | | |
| South Africa, Republic | 3.22 | 2.03 | 3.20 | 3.10 | 3.64 | 3.41 | 3.13 | 3.06 | 11.72 | 6.94 | 10.00 | 9.50 | -0.50 | -5.00 | 2.57 | 36.99 |
| Nigeria | 3.70 | 4.00 | 4.20 | 4.20 | 1.76 | 1.75 | 1.79 | 1.79 | 6.50 | 7.00 | 7.50 | 7.50 | 0.00 | 0.00 | 0.50 | 7.14 |
| Ethiopia | 1.87 | 2.05 | 2.10 | 2.10 | 1.82 | 1.95 | 2.00 | 2.00 | 3.40 | 4.00 | 4.20 | 4.20 | 0.00 | 0.00 | 0.20 | 5.00 |
| Zimbabwe | 1.20 | 1.30 | 1.40 | 1.30 | 0.46 | 0.69 | 0.71 | 0.65 | 0.55 | 0.90 | 1.00 | 0.85 | -0.15 | -15.00 | -0.05 | -5.56 |
| Turkey | 0.65 | 0.80 | 0.70 | 0.65 | 4.62 | 4.63 | 4.57 | 4.62 | 3.00 | 3.70 | 3.20 | 3.00 | -0.20 | -6.25 | -0.70 | -18.92 |
| Others | 27.68 | 28.15 | 28.08 | 28.08 | 2.24 | 2.18 | 2.16 | 2.16 | 61.88 | 61.50 | 60.66 | 60.67 | 0.01 | 0.01 | -0.83 | -1.35 |

World and Selected Countries and Regions

2/9/2007 9:33:00 AM

Table 05 Barley Area, Yield, and Production
1000 Metric Tons

| Country / Region | Area (Million hectares) | | | | Yield (Metric tons per hectare) | | | | Production (Million metric tons) | | | | Change in Production | | | |
|---------------------------|----------------------------|---------|---------------|-------|------------------------------------|---------|---------------|------|-------------------------------------|---------|---------------|--------|----------------------|---------|----------------|---------|
| | Prel. | | 2006/07 Proj. | | Prel. | | 2006/07 Proj. | | Prel. | | 2006/07 Proj. | | From last month | | From last year | |
| | 2004/05 | 2005/06 | Jan | Feb | 2004/05 | 2005/06 | Jan | Feb | 2004/05 | 2005/06 | Jan | Feb | MMT | Percent | MMT | Percent |
| World | 58.39 | 56.43 | 57.36 | 57.45 | 2.64 | 2.45 | 2.42 | 2.41 | 154.21 | 138.06 | 138.30 | 138.27 | -0.04 | -0.03 | 0.20 | 0.15 |
| United States | 1.63 | 1.32 | 1.19 | 1.19 | 3.74 | 3.49 | 3.28 | 3.28 | 6.09 | 4.61 | 3.92 | 3.92 | 0.00 | 0.00 | -0.69 | -15.02 |
| Total Foreign | 56.77 | 55.10 | 56.16 | 56.25 | 2.61 | 2.42 | 2.39 | 2.39 | 148.12 | 133.45 | 134.38 | 134.35 | -0.04 | -0.03 | 0.90 | 0.67 |
| Russian Federation | 10.00 | 9.15 | 10.10 | 10.00 | 1.72 | 1.73 | 1.79 | 1.81 | 17.20 | 15.80 | 18.10 | 18.10 | 0.00 | 0.00 | 2.30 | 14.56 |
| European Union | | | | | | | | | | | | | | | | |
| Germany | 1.98 | 1.95 | 2.03 | 2.03 | 6.57 | 5.97 | 5.91 | 5.91 | 12.99 | 11.61 | 12.00 | 12.00 | 0.00 | 0.00 | 0.39 | 3.32 |
| France | 1.63 | 1.60 | 1.66 | 1.66 | 6.76 | 6.44 | 6.29 | 6.29 | 11.03 | 10.32 | 10.45 | 10.45 | 0.00 | 0.00 | 0.13 | 1.29 |
| Spain | 3.17 | 3.10 | 3.10 | 3.10 | 3.35 | 1.42 | 2.68 | 2.68 | 10.61 | 4.40 | 8.30 | 8.30 | 0.00 | 0.00 | 3.90 | 88.64 |
| United Kingdom | 1.01 | 0.94 | 0.88 | 0.88 | 5.76 | 5.86 | 5.88 | 5.95 | 5.80 | 5.50 | 5.18 | 5.24 | 0.06 | 1.22 | -0.26 | -4.64 |
| Denmark | 0.71 | 0.70 | 0.70 | 0.70 | 5.14 | 5.50 | 4.57 | 4.57 | 3.63 | 3.85 | 3.20 | 3.20 | 0.00 | 0.00 | -0.65 | -16.88 |
| Poland | 1.01 | 1.11 | 1.17 | 1.17 | 3.52 | 3.23 | 2.74 | 2.74 | 3.57 | 3.58 | 3.20 | 3.20 | 0.00 | 0.00 | -0.38 | -10.64 |
| Czech Republic | 0.47 | 0.52 | 0.53 | 0.53 | 4.97 | 4.21 | 3.70 | 3.70 | 2.33 | 2.20 | 1.95 | 1.95 | 0.00 | 0.00 | -0.24 | -11.12 |
| Finland | 0.55 | 0.58 | 0.55 | 0.55 | 3.13 | 3.53 | 3.09 | 3.09 | 1.72 | 2.05 | 1.70 | 1.70 | 0.00 | 0.00 | -0.35 | -17.07 |
| Sweden | 0.37 | 0.40 | 0.32 | 0.32 | 4.58 | 4.00 | 4.06 | 4.06 | 1.69 | 1.60 | 1.30 | 1.30 | 0.00 | 0.00 | -0.30 | -18.75 |
| Italy | 0.31 | 0.32 | 0.33 | 0.33 | 3.77 | 3.79 | 3.81 | 3.81 | 1.16 | 1.21 | 1.24 | 1.24 | 0.00 | 0.00 | 0.03 | 2.06 |
| Hungary | 0.35 | 0.32 | 0.29 | 0.29 | 4.00 | 3.79 | 3.68 | 3.68 | 1.40 | 1.20 | 1.08 | 1.08 | 0.00 | 0.00 | -0.12 | -9.92 |
| Austria | 0.19 | 0.19 | 0.21 | 0.21 | 5.26 | 4.59 | 4.40 | 4.40 | 1.00 | 0.88 | 0.91 | 0.91 | 0.00 | 0.00 | 0.03 | 2.84 |
| Ukraine | 4.50 | 4.35 | 5.20 | 5.20 | 2.47 | 2.07 | 2.27 | 2.18 | 11.10 | 9.00 | 11.80 | 11.35 | -0.45 | -3.81 | 2.35 | 26.11 |
| Canada | 4.05 | 3.89 | 3.40 | 3.40 | 3.26 | 3.21 | 2.94 | 2.94 | 13.19 | 12.48 | 10.00 | 10.00 | 0.00 | 0.00 | -2.48 | -19.88 |
| Australia | 4.62 | 4.74 | 4.20 | 4.20 | 1.67 | 2.08 | 1.00 | 1.00 | 7.71 | 9.87 | 4.20 | 4.20 | 0.00 | 0.00 | -5.67 | -57.44 |
| Turkey | 3.50 | 3.60 | 3.50 | 3.50 | 2.11 | 2.11 | 2.06 | 2.06 | 7.40 | 7.60 | 7.20 | 7.20 | 0.00 | 0.00 | -0.40 | -5.26 |
| China, Peoples | 0.79 | 0.85 | 0.88 | 0.88 | 4.10 | 4.00 | 3.98 | 3.98 | 3.22 | 3.40 | 3.50 | 3.50 | 0.00 | 0.00 | 0.10 | 2.94 |
| Iran | 1.70 | 1.70 | 1.70 | 1.70 | 1.71 | 1.71 | 1.71 | 1.71 | 2.90 | 2.90 | 2.90 | 2.90 | 0.00 | 0.00 | 0.00 | 0.00 |
| Morocco | 2.32 | 2.18 | 2.20 | 2.20 | 1.19 | 0.51 | 1.14 | 1.14 | 2.76 | 1.10 | 2.50 | 2.50 | 0.00 | 0.00 | 1.40 | 126.86 |
| Kazakhstan, | 1.70 | 1.60 | 1.60 | 1.80 | 0.88 | 0.94 | 0.94 | 1.06 | 1.50 | 1.50 | 1.50 | 1.90 | 0.40 | 26.67 | 0.40 | 26.67 |
| Ethiopia | 1.13 | 1.18 | 1.33 | 1.33 | 1.39 | 1.51 | 1.36 | 1.36 | 1.58 | 1.79 | 1.80 | 1.80 | 0.00 | 0.00 | 0.02 | 0.84 |
| Algeria | 0.92 | 0.70 | 0.90 | 0.90 | 1.43 | 0.57 | 1.61 | 1.61 | 1.31 | 0.40 | 1.45 | 1.45 | 0.00 | 0.00 | 1.05 | 262.50 |
| India | 0.75 | 0.76 | 0.75 | 0.75 | 1.75 | 1.43 | 1.87 | 1.87 | 1.31 | 1.08 | 1.40 | 1.40 | 0.00 | 0.00 | 0.32 | 29.63 |
| Belarus | 0.66 | 0.60 | 0.55 | 0.55 | 3.03 | 3.00 | 2.45 | 2.45 | 2.00 | 1.80 | 1.35 | 1.35 | 0.00 | 0.00 | -0.45 | -25.00 |
| Iraq | 1.30 | 1.30 | 1.30 | 1.30 | 0.96 | 0.96 | 0.96 | 0.96 | 1.25 | 1.25 | 1.25 | 1.25 | 0.00 | 0.00 | 0.00 | 0.00 |
| Mexico | 0.33 | 0.31 | 0.35 | 0.35 | 2.86 | 2.46 | 2.57 | 2.57 | 0.93 | 0.75 | 0.90 | 0.90 | 0.00 | 0.00 | 0.15 | 19.52 |
| Argentina | 0.27 | 0.27 | 0.33 | 0.33 | 3.28 | 3.02 | 3.03 | 3.03 | 0.89 | 0.80 | 1.00 | 1.00 | 0.00 | 0.00 | 0.20 | 25.00 |
| Others | 6.50 | 6.21 | 6.11 | 6.10 | 2.30 | 2.18 | 2.13 | 2.13 | 14.94 | 13.53 | 13.03 | 12.98 | -0.05 | -0.38 | -0.55 | -4.09 |

World and Selected Countries and Regions

2/9/2007 9:33:00 AM

Table 06 Oats Area, Yield, and Production
1000 Metric Tons

| Country / Region | Area (Million hectares) | | | | Yield (Metric tons per hectare) | | | | Production (Million metric tons) | | | | Change in Production | | | |
|---------------------------|----------------------------|---------|---------------|-------|------------------------------------|---------|---------------|------|-------------------------------------|---------|---------------|-------|----------------------|---------|----------------|---------|
| | Prel. | | 2006/07 Proj. | | Prel. | | 2006/07 Proj. | | Prel. | | 2006/07 Proj. | | From last month | | From last year | |
| | 2004/05 | 2005/06 | Jan | Feb | 2004/05 | 2005/06 | Jan | Feb | 2004/05 | 2005/06 | Jan | Feb | MMT | Percent | MMT | Percent |
| World | 12.86 | 12.51 | 12.92 | 12.76 | 2.02 | 1.88 | 1.83 | 1.83 | 25.93 | 23.57 | 23.59 | 23.39 | -0.20 | -0.85 | -0.17 | -0.73 |
| United States | 0.72 | 0.74 | 0.64 | 0.64 | 2.32 | 2.26 | 2.13 | 2.13 | 1.68 | 1.67 | 1.36 | 1.36 | 0.00 | 0.00 | -0.31 | -18.36 |
| Total Foreign | 12.14 | 11.77 | 12.28 | 12.12 | 2.00 | 1.86 | 1.81 | 1.82 | 24.25 | 21.90 | 22.23 | 22.03 | -0.20 | -0.90 | 0.13 | 0.61 |
| Russian Federation | 3.55 | 3.35 | 3.75 | 3.60 | 1.39 | 1.36 | 1.31 | 1.36 | 4.95 | 4.55 | 4.90 | 4.90 | 0.00 | 0.00 | 0.35 | 7.69 |
| Canada | 1.32 | 1.33 | 1.43 | 1.43 | 2.80 | 2.59 | 2.52 | 2.52 | 3.68 | 3.43 | 3.60 | 3.60 | 0.00 | 0.00 | 0.17 | 4.90 |
| European Union | | | | | | | | | | | | | | | | |
| Poland | 0.52 | 0.54 | 0.56 | 0.56 | 2.75 | 2.46 | 1.96 | 1.96 | 1.43 | 1.32 | 1.10 | 1.10 | 0.00 | 0.00 | -0.22 | -16.92 |
| Finland | 0.33 | 0.35 | 0.38 | 0.38 | 3.07 | 3.07 | 2.80 | 2.80 | 1.00 | 1.07 | 1.05 | 1.05 | 0.00 | 0.00 | -0.02 | -2.14 |
| Spain | 0.48 | 0.47 | 0.48 | 0.48 | 2.14 | 1.06 | 1.89 | 1.89 | 1.02 | 0.50 | 0.90 | 0.90 | 0.00 | 0.00 | 0.40 | 80.00 |
| Germany | 0.23 | 0.21 | 0.19 | 0.19 | 5.20 | 4.59 | 4.50 | 4.50 | 1.19 | 0.96 | 0.83 | 0.83 | 0.00 | 0.00 | -0.13 | -13.59 |
| Sweden | 0.23 | 0.19 | 0.21 | 0.21 | 4.02 | 3.95 | 3.29 | 3.29 | 0.93 | 0.75 | 0.70 | 0.70 | 0.00 | 0.00 | -0.05 | -6.67 |
| United Kingdom | 0.11 | 0.09 | 0.12 | 0.12 | 5.80 | 5.85 | 6.05 | 6.02 | 0.63 | 0.53 | 0.73 | 0.73 | 0.00 | 0.28 | 0.20 | 36.84 |
| France | 0.13 | 0.11 | 0.11 | 0.11 | 4.71 | 4.56 | 4.43 | 4.43 | 0.60 | 0.51 | 0.48 | 0.48 | 0.00 | 0.00 | -0.03 | -5.53 |
| Italy | 0.15 | 0.18 | 0.16 | 0.16 | 2.30 | 2.45 | 2.49 | 2.49 | 0.34 | 0.43 | 0.41 | 0.41 | 0.00 | 0.00 | -0.02 | -5.36 |
| Denmark | 0.06 | 0.06 | 0.06 | 0.06 | 5.05 | 4.91 | 5.09 | 5.09 | 0.31 | 0.27 | 0.28 | 0.28 | 0.00 | 0.00 | 0.01 | 3.70 |
| Czech Republic | 0.06 | 0.05 | 0.06 | 0.06 | 3.85 | 2.90 | 2.86 | 2.86 | 0.23 | 0.15 | 0.17 | 0.17 | 0.00 | 0.00 | 0.02 | 9.93 |
| Hungary | 0.07 | 0.07 | 0.07 | 0.07 | 3.04 | 2.40 | 2.36 | 2.36 | 0.22 | 0.18 | 0.17 | 0.17 | 0.00 | 0.00 | -0.01 | -5.71 |
| Austria | 0.03 | 0.03 | 0.04 | 0.04 | 4.63 | 4.27 | 3.71 | 3.71 | 0.14 | 0.13 | 0.13 | 0.13 | 0.00 | 0.00 | 0.00 | 1.56 |
| Ireland | 0.02 | 0.02 | 0.02 | 0.02 | 7.29 | 7.29 | 7.35 | 7.35 | 0.15 | 0.12 | 0.13 | 0.13 | 0.00 | 0.00 | 0.00 | 0.81 |
| Lithuania | 0.05 | 0.06 | 0.06 | 0.06 | 2.23 | 2.00 | 2.18 | 2.18 | 0.12 | 0.11 | 0.12 | 0.12 | 0.00 | 0.00 | 0.01 | 9.09 |
| Australia | 0.89 | 0.86 | 0.80 | 0.80 | 1.48 | 1.65 | 1.25 | 1.25 | 1.32 | 1.42 | 1.00 | 1.00 | 0.00 | 0.00 | -0.42 | -29.38 |
| Ukraine | 0.51 | 0.45 | 0.45 | 0.44 | 1.96 | 1.78 | 2.00 | 1.59 | 1.00 | 0.80 | 0.90 | 0.70 | -0.20 | -22.22 | -0.10 | -12.50 |
| China, Peoples | 0.50 | 0.50 | 0.50 | 0.50 | 1.20 | 1.20 | 1.20 | 1.20 | 0.60 | 0.60 | 0.60 | 0.60 | 0.00 | 0.00 | 0.00 | 0.00 |
| Belarus | 0.25 | 0.25 | 0.25 | 0.25 | 3.08 | 2.40 | 2.20 | 2.20 | 0.77 | 0.60 | 0.55 | 0.55 | 0.00 | 0.00 | -0.05 | -8.33 |
| Brazil | 0.33 | 0.36 | 0.35 | 0.35 | 1.33 | 1.45 | 1.36 | 1.36 | 0.43 | 0.52 | 0.48 | 0.48 | 0.00 | 0.00 | -0.04 | -8.12 |
| Argentina | 0.28 | 0.23 | 0.25 | 0.25 | 1.83 | 1.52 | 1.60 | 1.60 | 0.51 | 0.35 | 0.40 | 0.40 | 0.00 | 0.00 | 0.05 | 14.29 |
| Chile | 0.13 | 0.09 | 0.08 | 0.08 | 3.40 | 4.67 | 4.75 | 4.75 | 0.43 | 0.42 | 0.38 | 0.38 | 0.00 | 0.00 | -0.04 | -9.52 |
| Romania | 0.23 | 0.23 | 0.23 | 0.23 | 1.56 | 1.56 | 1.56 | 1.56 | 0.35 | 0.35 | 0.35 | 0.35 | 0.00 | 0.00 | 0.00 | 0.00 |
| Norway | 0.09 | 0.08 | 0.08 | 0.08 | 4.17 | 4.20 | 4.20 | 4.20 | 0.36 | 0.35 | 0.35 | 0.35 | 0.00 | 0.00 | 0.00 | 0.00 |
| Turkey | 0.16 | 0.16 | 0.16 | 0.16 | 1.87 | 1.87 | 1.87 | 1.87 | 0.29 | 0.29 | 0.29 | 0.29 | 0.00 | 0.00 | 0.00 | 0.00 |
| Kazakhstan, | 0.14 | 0.14 | 0.14 | 0.14 | 1.00 | 1.00 | 1.00 | 1.00 | 0.14 | 0.14 | 0.14 | 0.14 | 0.00 | 0.00 | 0.00 | 0.00 |
| Serbia and | 0.07 | 0.07 | 0.07 | 0.07 | 1.85 | 1.85 | 1.85 | 1.85 | 0.12 | 0.12 | 0.12 | 0.12 | 0.00 | 0.00 | 0.00 | 0.00 |
| Others | 1.27 | 1.27 | 1.27 | 1.27 | 0.79 | 0.73 | 0.79 | 0.79 | 1.01 | 0.93 | 1.00 | 1.00 | 0.00 | -0.20 | 0.07 | 7.31 |

World and Selected Countries and Regions

2/9/2007 9:33:02 AM

Table 07 Rye Area, Yield, and Production
1000 Metric Tons

| Country / Region | Area (Million hectares) | | | | Yield (Metric tons per hectare) | | | | Production (Million metric tons) | | | | Change in Production | | | |
|---------------------------|----------------------------|---------|---------------|------|------------------------------------|---------|---------------|------|-------------------------------------|---------|---------------|-------|----------------------|---------|----------------|---------|
| | Prel. | | 2006/07 Proj. | | Prel. | | 2006/07 Proj. | | Prel. | | 2006/07 Proj. | | From last month | | From last year | |
| | 2004/05 | 2005/06 | Jan | Feb | 2004/05 | 2005/06 | Jan | Feb | 2004/05 | 2005/06 | Jan | Feb | MMT | Percent | MMT | Percent |
| World | 6.91 | 6.80 | 5.82 | 5.83 | 2.46 | 2.13 | 2.11 | 2.12 | 17.00 | 14.52 | 12.29 | 12.39 | 0.10 | 0.81 | -2.13 | -14.68 |
| United States | 0.12 | 0.11 | 0.11 | 0.11 | 1.74 | 1.69 | 1.65 | 1.65 | 0.21 | 0.19 | 0.18 | 0.18 | 0.00 | 0.00 | -0.01 | -4.19 |
| Total Foreign | 6.79 | 6.69 | 5.71 | 5.72 | 2.47 | 2.14 | 2.12 | 2.13 | 16.79 | 14.33 | 12.10 | 12.20 | 0.10 | 0.83 | -2.12 | -14.82 |
| European Union | | | | | | | | | | | | | | | | |
| Poland | 1.55 | 1.41 | 1.46 | 1.46 | 2.76 | 2.42 | 1.82 | 1.82 | 4.28 | 3.40 | 2.65 | 2.65 | 0.00 | 0.00 | -0.75 | -22.15 |
| Germany | 0.63 | 0.55 | 0.54 | 0.54 | 6.13 | 5.09 | 4.91 | 4.91 | 3.83 | 2.79 | 2.65 | 2.65 | 0.00 | 0.00 | -0.15 | -5.33 |
| Austria | 0.05 | 0.04 | 0.03 | 0.03 | 4.63 | 3.81 | 3.52 | 3.52 | 0.21 | 0.16 | 0.10 | 0.10 | 0.00 | 0.00 | -0.07 | -42.07 |
| Spain | 0.09 | 0.09 | 0.10 | 0.10 | 1.82 | 1.11 | 1.68 | 1.68 | 0.17 | 0.10 | 0.16 | 0.16 | 0.00 | 0.00 | 0.06 | 60.00 |
| France | 0.03 | 0.03 | 0.03 | 0.03 | 5.00 | 4.77 | 4.73 | 4.73 | 0.17 | 0.15 | 0.12 | 0.12 | 0.00 | 0.00 | -0.03 | -16.89 |
| Denmark | 0.03 | 0.03 | 0.03 | 0.03 | 4.81 | 4.80 | 5.00 | 5.00 | 0.15 | 0.12 | 0.15 | 0.15 | 0.00 | 0.00 | 0.03 | 25.00 |
| Lithuania | 0.06 | 0.06 | 0.06 | 0.06 | 2.52 | 2.42 | 2.33 | 2.33 | 0.14 | 0.15 | 0.14 | 0.14 | 0.00 | 0.00 | -0.01 | -3.45 |
| Sweden | 0.03 | 0.02 | 0.02 | 0.02 | 5.36 | 5.50 | 5.21 | 5.21 | 0.13 | 0.11 | 0.13 | 0.13 | 0.00 | 0.00 | 0.02 | 13.64 |
| Czech Republic | 0.06 | 0.05 | 0.02 | 0.03 | 5.31 | 4.19 | 3.50 | 2.66 | 0.31 | 0.20 | 0.08 | 0.08 | 0.00 | 0.00 | -0.12 | -60.91 |
| Hungary | 0.05 | 0.05 | 0.05 | 0.05 | 2.70 | 1.84 | 1.84 | 1.84 | 0.14 | 0.09 | 0.09 | 0.09 | 0.00 | 0.00 | 0.00 | 0.00 |
| Latvia | 0.05 | 0.04 | 0.04 | 0.04 | 1.90 | 2.15 | 2.13 | 2.13 | 0.09 | 0.09 | 0.09 | 0.09 | 0.00 | 0.00 | 0.00 | -1.16 |
| Slovakia | 0.03 | 0.03 | 0.02 | 0.02 | 4.06 | 2.76 | 2.00 | 2.00 | 0.13 | 0.07 | 0.03 | 0.03 | 0.00 | 0.00 | -0.04 | -56.52 |
| Finland | 0.03 | 0.03 | 0.03 | 0.03 | 1.97 | 2.00 | 2.17 | 2.17 | 0.06 | 0.06 | 0.07 | 0.07 | 0.00 | 0.00 | 0.01 | 8.33 |
| United Kingdom | 0.01 | 0.01 | 0.01 | 0.01 | 4.50 | 4.90 | 4.90 | 4.90 | 0.05 | 0.05 | 0.05 | 0.05 | 0.00 | 0.00 | 0.00 | 0.00 |
| Portugal | 0.03 | 0.03 | 0.03 | 0.03 | 1.00 | 0.76 | 0.83 | 0.83 | 0.03 | 0.02 | 0.03 | 0.03 | 0.00 | 0.00 | 0.01 | 31.58 |
| Greece | 0.01 | 0.01 | 0.01 | 0.01 | 1.31 | 2.17 | 2.08 | 2.08 | 0.02 | 0.03 | 0.03 | 0.03 | 0.00 | 0.00 | 0.00 | -3.85 |
| Russian Federation | 2.00 | 2.35 | 1.80 | 1.80 | 1.43 | 1.53 | 1.67 | 1.67 | 2.85 | 3.60 | 3.00 | 3.00 | 0.00 | 0.00 | -0.60 | -16.67 |
| Belarus | 0.75 | 0.70 | 0.55 | 0.55 | 1.87 | 1.64 | 2.00 | 2.18 | 1.40 | 1.15 | 1.10 | 1.20 | 0.10 | 9.09 | 0.05 | 4.35 |
| Ukraine | 0.73 | 0.61 | 0.35 | 0.36 | 2.21 | 1.72 | 1.71 | 1.67 | 1.60 | 1.05 | 0.60 | 0.60 | 0.00 | 0.00 | -0.45 | -42.86 |
| Canada | 0.16 | 0.15 | 0.13 | 0.13 | 2.68 | 2.43 | 2.31 | 2.31 | 0.42 | 0.36 | 0.30 | 0.30 | 0.00 | 0.00 | -0.06 | -16.43 |
| Turkey | 0.15 | 0.15 | 0.15 | 0.15 | 1.60 | 1.60 | 1.60 | 1.60 | 0.24 | 0.24 | 0.24 | 0.24 | 0.00 | 0.00 | 0.00 | 0.00 |
| Argentina | 0.06 | 0.05 | 0.05 | 0.05 | 1.46 | 1.15 | 1.15 | 1.15 | 0.09 | 0.06 | 0.06 | 0.06 | 0.00 | 0.00 | 0.00 | 0.00 |
| Kazakhstan, | 0.07 | 0.07 | 0.07 | 0.07 | 0.71 | 0.71 | 0.71 | 0.71 | 0.05 | 0.05 | 0.05 | 0.05 | 0.00 | 0.00 | 0.00 | 0.00 |
| Romania | 0.02 | 0.02 | 0.02 | 0.02 | 2.50 | 2.50 | 2.50 | 2.50 | 0.05 | 0.05 | 0.05 | 0.05 | 0.00 | 0.00 | 0.00 | 0.00 |
| Australia | 0.04 | 0.04 | 0.04 | 0.04 | 0.57 | 0.57 | 0.57 | 0.57 | 0.02 | 0.02 | 0.02 | 0.02 | 0.00 | 0.00 | 0.00 | 0.00 |
| Switzerland | 0.00 | 0.00 | 0.00 | 0.00 | 6.67 | 6.67 | 6.67 | 6.67 | 0.02 | 0.02 | 0.02 | 0.02 | 0.00 | 0.00 | 0.00 | 0.00 |
| Others | 0.09 | 0.09 | 0.08 | 0.08 | 1.63 | 1.67 | 1.65 | 1.65 | 0.14 | 0.15 | 0.13 | 0.13 | 0.00 | 0.00 | -0.02 | -11.41 |

World and Selected Countries and Regions

2/9/2007 9:33:01 AM

Table 08 Sorghum Area, Yield, and Production
1000 Metric Tons

| Country / Region | Area (Million hectares) | | | | Yield (Metric tons per hectare) | | | | Production (Million metric tons) | | | | Change in Production | | | |
|---------------------------|----------------------------|------------------|----------------|--------------|------------------------------------|------------------|----------------|--------------|-------------------------------------|------------------|----------------|--------------|------------------------|---------|-----------------------|---------|
| | 2004/05 | Prel. 2005/06 | 2006/07 Jan | Proj. Feb | 2004/05 | Prel. 2005/06 | 2006/07 Jan | Proj. Feb | 2004/05 | Prel. 2005/06 | 2006/07 Jan | Proj. Feb | From last month MMT | Percent | From last year MMT | Percent |
| World | 37.72 | 39.62 | 39.74 | 39.72 | 1.53 | 1.48 | 1.56 | 1.20 | 57.79 | 59.14 | 57.14 | 56.90 | -0.24 | -0.42 | -2.24 | -3.79 |
| United States | 2.64 | 2.32 | 2.00 | 2.00 | 4.37 | 4.30 | 3.53 | 3.53 | 11.52 | 9.98 | 7.05 | 7.05 | 0.00 | 0.00 | -2.93 | -29.37 |
| Total Foreign | 35.08 | 37.30 | 37.74 | 37.72 | 1.32 | 1.32 | 1.33 | 1.32 | 46.26 | 49.16 | 50.09 | 49.85 | -0.24 | -0.48 | 0.69 | 1.40 |
| Sub-Saharan Africa | | | | | | | | | | | | | | | | |
| Nigeria | 7.20 | 7.40 | 7.40 | 7.40 | 1.39 | 1.42 | 1.42 | 1.42 | 10.00 | 10.50 | 10.50 | 10.50 | 0.00 | 0.00 | 0.00 | 0.00 |
| Sudan | 3.82 | 6.00 | 6.00 | 6.00 | 0.71 | 0.73 | 0.62 | 0.62 | 2.70 | 4.38 | 3.70 | 3.70 | 0.00 | 0.00 | -0.68 | -15.53 |
| Ethiopia | 1.58 | 1.75 | 1.80 | 1.80 | 1.37 | 1.60 | 1.61 | 1.61 | 2.15 | 2.80 | 2.90 | 2.90 | 0.00 | 0.00 | 0.10 | 3.57 |
| Burkina | 1.45 | 1.45 | 1.45 | 1.45 | 0.97 | 1.27 | 1.10 | 1.10 | 1.40 | 1.84 | 1.60 | 1.60 | 0.00 | 0.00 | -0.24 | -12.90 |
| Tanzania, United | 0.85 | 0.89 | 0.89 | 0.89 | 0.96 | 1.00 | 0.79 | 0.79 | 0.82 | 0.89 | 0.70 | 0.70 | 0.00 | 0.00 | -0.19 | -21.35 |
| Niger | 1.50 | 1.50 | 1.50 | 1.50 | 0.33 | 0.50 | 0.45 | 0.45 | 0.50 | 0.75 | 0.68 | 0.68 | 0.00 | 0.00 | -0.08 | -10.00 |
| Uganda | 0.29 | 0.30 | 0.31 | 0.31 | 1.40 | 1.53 | 1.58 | 1.58 | 0.40 | 0.45 | 0.49 | 0.49 | 0.00 | 0.00 | 0.04 | 8.89 |
| Mozambique | 0.53 | 0.49 | 0.50 | 0.50 | 0.63 | 0.66 | 0.70 | 0.70 | 0.33 | 0.33 | 0.35 | 0.35 | 0.00 | 0.00 | 0.03 | 7.69 |
| Ghana | 0.30 | 0.34 | 0.34 | 0.34 | 1.33 | 1.03 | 1.03 | 1.03 | 0.40 | 0.35 | 0.35 | 0.35 | 0.00 | 0.00 | 0.00 | 0.00 |
| South Africa, Republic | 0.09 | 0.04 | 0.09 | 0.07 | 2.99 | 2.59 | 2.71 | 2.71 | 0.26 | 0.10 | 0.23 | 0.19 | -0.04 | -17.39 | 0.09 | 97.92 |
| South Asia | | | | | | | | | | | | | | | | |
| India | 9.10 | 9.00 | 9.10 | 9.10 | 0.80 | 0.87 | 0.86 | 0.86 | 7.24 | 7.79 | 7.80 | 7.80 | 0.00 | 0.00 | 0.01 | 0.13 |
| Pakistan | 0.40 | 0.40 | 0.40 | 0.40 | 0.58 | 0.58 | 0.58 | 0.58 | 0.23 | 0.23 | 0.23 | 0.23 | 0.00 | 0.00 | 0.00 | 0.00 |
| Mexico | 1.69 | 1.57 | 1.75 | 1.75 | 3.49 | 3.50 | 3.51 | 3.51 | 5.89 | 5.50 | 6.15 | 6.15 | 0.00 | 0.00 | 0.65 | 11.82 |
| China, Peoples | 0.57 | 0.57 | 0.59 | 0.59 | 4.10 | 4.47 | 4.37 | 4.37 | 2.33 | 2.55 | 2.58 | 2.58 | 0.00 | 0.00 | 0.03 | 1.34 |
| Australia | 0.80 | 0.89 | 0.80 | 0.80 | 2.71 | 2.27 | 2.63 | 2.38 | 2.18 | 2.02 | 2.10 | 1.90 | -0.20 | -9.52 | -0.12 | -5.89 |
| Egypt | 0.16 | 0.16 | 0.16 | 0.16 | 5.63 | 5.63 | 5.63 | 5.63 | 0.90 | 0.90 | 0.90 | 0.90 | 0.00 | 0.00 | 0.00 | 0.00 |
| European Union | | | | | | | | | | | | | | | | |
| France | 0.05 | 0.05 | 0.06 | 0.06 | 5.29 | 5.23 | 5.43 | 5.43 | 0.25 | 0.27 | 0.30 | 0.30 | 0.00 | 0.00 | 0.03 | 11.76 |
| Italy | 0.03 | 0.03 | 0.03 | 0.03 | 6.32 | 5.78 | 8.00 | 8.00 | 0.22 | 0.19 | 0.23 | 0.23 | 0.00 | 0.00 | 0.05 | 25.41 |
| Others | 4.69 | 4.48 | 4.58 | 4.58 | 1.72 | 1.64 | 1.81 | 1.81 | 8.07 | 7.34 | 8.30 | 8.30 | 0.00 | 0.00 | 0.96 | 13.02 |

World and Selected Countries and Regions

2/9/2007 9:33:01 AM

Table 09 Rice Area, Yield, and Production
1000 Metric Tons

| Country / Region | Area (Million hectares) | | | | Yield (Metric tons per hectare) | | | | Production (Million metric tons) | | | | Change in Production | | | |
|---------------------------|----------------------------|--------------------|----------------|-------------------------|------------------------------------|--------------------|----------------|-------------------------|-------------------------------------|--------------------|----------------|-------------------------|------------------------|---------|-----------------------|---------|
| | Prel. 2004/05 | 2006/07 2005/06 | 2006/07 Jan | 2006/07 Proj. Feb | Prel. 2004/05 | 2006/07 2005/06 | 2006/07 Jan | 2006/07 Proj. Feb | Prel. 2004/05 | 2006/07 2005/06 | 2006/07 Jan | 2006/07 Proj. Feb | From last month MMT | Percent | From last year MMT | Percent |
| World | 150.42 | 152.25 | 152.06 | 152.04 | 3.96 | 4.07 | 4.08 | 4.07 | 400.47 | 416.28 | 415.02 | 415.27 | 0.25 | 0.06 | -1.01 | -0.24 |
| United States | 1.35 | 1.36 | 1.14 | 1.14 | 7.83 | 7.44 | 7.69 | 7.69 | 7.46 | 7.11 | 6.15 | 6.15 | 0.00 | 0.00 | -0.96 | -13.52 |
| Total Foreign | 149.08 | 150.89 | 150.92 | 150.90 | 3.93 | 4.04 | 4.04 | 4.04 | 393.01 | 409.17 | 408.87 | 409.12 | 0.25 | 0.06 | -0.05 | -0.01 |
| East Asia | | | | | | | | | | | | | | | | |
| China, Peoples | 28.38 | 28.85 | 29.20 | 29.20 | 6.31 | 6.26 | 6.26 | 6.26 | 125.36 | 126.41 | 128.00 | 128.00 | 0.00 | 0.00 | 1.59 | 1.25 |
| Japan | 1.70 | 1.71 | 1.70 | 1.70 | 6.42 | 6.65 | 6.42 | 6.42 | 7.94 | 8.26 | 7.94 | 7.94 | 0.00 | 0.00 | -0.32 | -3.84 |
| Korea, Republic of | 1.00 | 0.98 | 0.96 | 0.96 | 6.73 | 6.57 | 6.61 | 6.61 | 5.00 | 4.77 | 4.68 | 4.68 | 0.00 | 0.00 | -0.09 | -1.85 |
| Korea, Democratic | 0.59 | 0.59 | 0.59 | 0.59 | 4.05 | 4.21 | 4.08 | 4.08 | 1.54 | 1.60 | 1.55 | 1.55 | 0.00 | 0.00 | -0.05 | -3.13 |
| Southeast Asia | | | | | | | | | | | | | | | | |
| Indonesia | 11.65 | 11.80 | 11.50 | 11.50 | 4.64 | 4.59 | 4.54 | 4.54 | 34.83 | 34.96 | 33.70 | 33.70 | 0.00 | 0.00 | -1.26 | -3.60 |
| Vietnam | 7.45 | 7.31 | 7.36 | 7.31 | 4.62 | 4.72 | 4.64 | 4.72 | 22.72 | 22.77 | 22.54 | 22.77 | 0.23 | 1.04 | 0.00 | -0.01 |
| Thailand | 10.00 | 10.22 | 10.25 | 10.27 | 2.63 | 2.70 | 2.70 | 2.69 | 17.36 | 18.20 | 18.25 | 18.25 | 0.00 | 0.00 | 0.05 | 0.27 |
| Burma, Union of | 6.80 | 7.00 | 6.25 | 6.25 | 2.43 | 2.57 | 2.90 | 2.90 | 9.57 | 10.44 | 10.50 | 10.50 | 0.00 | 0.00 | 0.06 | 0.57 |
| Philippines | 4.10 | 4.08 | 4.14 | 4.14 | 3.54 | 3.70 | 3.72 | 3.72 | 9.43 | 9.82 | 10.00 | 10.00 | 0.00 | 0.00 | 0.18 | 1.83 |
| Cambodia | 2.10 | 2.15 | 2.20 | 2.20 | 1.76 | 2.09 | 2.18 | 2.18 | 2.33 | 2.84 | 3.03 | 3.03 | 0.00 | 0.00 | 0.19 | 6.70 |
| Laos | 0.77 | 0.75 | 0.76 | 0.76 | 3.51 | 3.47 | 3.49 | 3.49 | 1.62 | 1.56 | 1.59 | 1.59 | 0.00 | 0.00 | 0.03 | 1.92 |
| Malaysia | 0.65 | 0.66 | 0.65 | 0.65 | 3.34 | 3.36 | 3.36 | 3.36 | 1.42 | 1.44 | 1.42 | 1.42 | 0.00 | 0.00 | -0.02 | -1.39 |
| South America | | | | | | | | | | | | | | | | |
| Brazil | 3.92 | 2.99 | 3.00 | 3.00 | 3.37 | 3.88 | 3.77 | 3.77 | 9.00 | 7.87 | 7.70 | 7.70 | 0.00 | 0.00 | -0.17 | -2.21 |
| Peru | 0.36 | 0.35 | 0.36 | 0.36 | 6.90 | 6.42 | 6.36 | 6.36 | 1.72 | 1.55 | 1.58 | 1.58 | 0.00 | 0.00 | 0.03 | 1.94 |
| Sub-Saharan Africa | | | | | | | | | | | | | | | | |
| Nigeria | 1.85 | 2.00 | 2.05 | 2.05 | 2.07 | 2.25 | 2.28 | 2.28 | 2.30 | 2.70 | 2.80 | 2.80 | 0.00 | 0.00 | 0.10 | 3.70 |
| Madagascar | 1.22 | 1.35 | 1.35 | 1.35 | 2.48 | 2.52 | 2.59 | 2.59 | 1.94 | 2.18 | 2.24 | 2.24 | 0.00 | 0.00 | 0.06 | 2.94 |
| European Union | | | | | | | | | | | | | | | | |
| Italy | 0.23 | 0.22 | 0.23 | 0.23 | 6.62 | 6.45 | 6.28 | 6.28 | 0.94 | 0.88 | 0.87 | 0.87 | 0.00 | 0.00 | -0.01 | -0.57 |
| Spain | 0.12 | 0.12 | 0.10 | 0.10 | 7.44 | 7.05 | 7.18 | 7.18 | 0.63 | 0.59 | 0.52 | 0.52 | 0.00 | 0.00 | -0.07 | -11.75 |
| Egypt | 0.65 | 0.65 | 0.65 | 0.65 | 9.85 | 9.85 | 9.80 | 9.80 | 4.13 | 4.13 | 4.14 | 4.14 | 0.00 | 0.00 | 0.01 | 0.24 |
| Iran | 0.63 | 0.64 | 0.64 | 0.64 | 5.40 | 5.47 | 5.63 | 5.63 | 2.24 | 2.31 | 2.38 | 2.38 | 0.00 | 0.00 | 0.07 | 2.86 |
| Others | 64.91 | 66.47 | 66.99 | 67.00 | 3.04 | 3.26 | 3.22 | 3.22 | 131.00 | 143.90 | 143.46 | 143.47 | 0.02 | 0.01 | -0.43 | -0.30 |

World and Selected Countries and Regions
Yield is on a rough basis, before the milling process
Production is on a milled basis, after the milling process

2/9/2007 9:33:02 AM

**Table 10 5-Major Oilseeds; Area, Yield, and Production 1/
1000 Metric Tons**

| Country / Region | Area (Million hectares) | | | | Yield (Metric tons per hectare) | | | | Production (Million metric tons) | | | | Change in Production | | | |
|----------------------------|----------------------------|---------|---------------|--------|------------------------------------|---------|---------------|------|-------------------------------------|---------|---------------|--------|----------------------|---------|----------------|---------|
| | Prel. | | 2006/07 Proj. | | Prel. | | 2006/07 Proj. | | Prel. | | 2006/07 Proj. | | From last month | | From last year | |
| | 2004/05 | 2005/06 | Jan | Feb | 2004/05 | 2005/06 | Jan | Feb | 2004/05 | 2005/06 | Jan | Feb | MMT | Percent | MMT | Percent |
| World | 196.86 | 197.28 | 198.31 | 198.48 | 1.86 | 1.89 | 1.91 | 1.92 | 365.91 | 372.44 | 379.39 | 381.04 | 1.65 | 0.43 | 8.60 | 2.31 |
| United States | 36.81 | 36.59 | 36.96 | 36.96 | 2.61 | 2.61 | 2.62 | 2.62 | 95.94 | 95.53 | 96.88 | 96.88 | 0.00 | 0.00 | 1.34 | 1.40 |
| Total Foreign | 160.05 | 160.69 | 161.35 | 161.52 | 1.69 | 1.72 | 1.75 | 1.76 | 269.97 | 276.90 | 282.51 | 284.16 | 1.65 | 0.58 | 7.26 | 2.62 |
| South America | | | | | | | | | | | | | | | | |
| Brazil | 24.26 | 23.02 | 22.20 | 22.20 | 2.29 | 2.48 | 2.64 | 2.64 | 55.65 | 57.04 | 58.53 | 58.53 | 0.00 | 0.00 | 1.49 | 2.61 |
| Argentina | 16.87 | 17.87 | 18.60 | 18.70 | 2.57 | 2.51 | 2.54 | 2.61 | 43.43 | 44.87 | 47.29 | 48.79 | 1.50 | 3.17 | 3.92 | 8.73 |
| Paraguay | 2.29 | 2.33 | 2.31 | 2.31 | 1.86 | 1.81 | 2.17 | 2.17 | 4.27 | 4.23 | 5.01 | 5.01 | 0.00 | 0.00 | 0.78 | 18.45 |
| Bolivia | 1.08 | 1.11 | 1.15 | 1.15 | 2.03 | 2.01 | 2.02 | 2.02 | 2.20 | 2.23 | 2.32 | 2.32 | 0.00 | 0.00 | 0.09 | 4.04 |
| Uruguay | 0.41 | 0.44 | 0.46 | 0.46 | 1.63 | 1.70 | 1.74 | 1.74 | 0.67 | 0.74 | 0.79 | 0.79 | 0.00 | 0.00 | 0.05 | 6.76 |
| China, Peoples | 28.23 | 27.61 | 27.55 | 27.55 | 2.05 | 2.03 | 2.06 | 2.06 | 57.97 | 55.94 | 56.65 | 56.70 | 0.05 | 0.09 | 0.76 | 1.36 |
| South Asia | | | | | | | | | | | | | | | | |
| India | 33.16 | 33.17 | 32.10 | 32.10 | 0.86 | 0.90 | 0.92 | 0.92 | 28.64 | 29.92 | 29.50 | 29.50 | 0.00 | 0.00 | -0.42 | -1.39 |
| Pakistan | 3.76 | 3.68 | 3.83 | 3.83 | 1.47 | 1.36 | 1.30 | 1.30 | 5.53 | 5.01 | 4.99 | 4.99 | 0.00 | 0.00 | -0.02 | -0.44 |
| Former Soviet Union | | | | | | | | | | | | | | | | |
| Russian Federation | 5.46 | 6.30 | 6.92 | 7.07 | 1.03 | 1.18 | 1.15 | 1.15 | 5.63 | 7.44 | 7.95 | 8.10 | 0.15 | 1.89 | 0.66 | 8.84 |
| Ukraine | 3.76 | 4.31 | 4.90 | 5.00 | 0.95 | 1.30 | 1.32 | 1.36 | 3.56 | 5.60 | 6.45 | 6.79 | 0.34 | 5.27 | 1.20 | 21.36 |
| Uzbekistan, Republic | 1.42 | 1.43 | 1.42 | 1.42 | 1.59 | 1.68 | 1.65 | 1.65 | 2.25 | 2.40 | 2.35 | 2.35 | 0.00 | 0.00 | -0.05 | -2.08 |
| Canada | 6.17 | 6.53 | 6.60 | 6.60 | 1.75 | 1.98 | 1.93 | 1.93 | 10.83 | 12.91 | 12.75 | 12.75 | 0.00 | 0.00 | -0.16 | -1.24 |
| European Union | | | | | | | | | | | | | | | | |
| France | 1.80 | 1.91 | 2.08 | 2.08 | 3.11 | 3.16 | 2.70 | 2.70 | 5.60 | 6.03 | 5.61 | 5.61 | 0.00 | 0.00 | -0.42 | -6.97 |
| Germany | 1.32 | 1.38 | 1.46 | 1.46 | 4.07 | 3.72 | 3.67 | 3.67 | 5.35 | 5.12 | 5.37 | 5.37 | 0.00 | 0.00 | 0.25 | 4.89 |
| United Kingdom | 0.56 | 0.60 | 0.58 | 0.58 | 2.88 | 3.19 | 3.30 | 3.25 | 1.61 | 1.90 | 1.90 | 1.87 | -0.03 | -1.58 | -0.03 | -1.58 |
| Czech Republic | 0.31 | 0.32 | 0.35 | 0.35 | 3.36 | 2.74 | 2.89 | 2.89 | 1.03 | 0.88 | 1.00 | 1.00 | 0.00 | 0.00 | 0.12 | 13.93 |
| Hungary | 0.61 | 0.67 | 0.71 | 0.71 | 2.54 | 2.19 | 2.33 | 2.21 | 1.55 | 1.46 | 1.65 | 1.57 | -0.08 | -4.85 | 0.11 | 7.53 |
| Poland | 0.54 | 0.55 | 0.60 | 0.60 | 3.04 | 2.73 | 2.67 | 2.67 | 1.63 | 1.50 | 1.60 | 1.60 | 0.00 | 0.00 | 0.10 | 6.67 |
| Italy | 0.28 | 0.31 | 0.33 | 0.33 | 2.81 | 2.68 | 2.75 | 2.75 | 0.78 | 0.83 | 0.92 | 0.92 | 0.00 | 0.00 | 0.09 | 10.91 |
| Australia | 1.77 | 1.44 | 0.99 | 0.99 | 1.45 | 1.75 | 1.07 | 1.07 | 2.57 | 2.52 | 1.06 | 1.06 | 0.00 | 0.00 | -1.46 | -57.99 |
| Turkey | 1.22 | 1.15 | 1.25 | 1.25 | 1.73 | 1.73 | 1.67 | 1.67 | 2.11 | 1.98 | 2.09 | 2.09 | 0.00 | 0.00 | 0.11 | 5.66 |
| Sub-Saharan Africa | | | | | | | | | | | | | | | | |
| Nigeria | 2.03 | 2.03 | 2.04 | 2.04 | 1.04 | 1.04 | 1.04 | 1.04 | 2.11 | 2.11 | 2.11 | 2.11 | 0.00 | 0.00 | 0.01 | 0.24 |
| South Africa, Republic | 0.68 | 0.78 | 0.67 | 0.66 | 1.51 | 1.37 | 1.47 | 1.47 | 1.02 | 1.07 | 0.98 | 0.97 | -0.02 | -1.53 | -0.10 | -9.20 |
| Southeast Asia | | | | | | | | | | | | | | | | |
| Indonesia | 1.37 | 1.40 | 1.41 | 1.41 | 1.45 | 1.44 | 1.46 | 1.46 | 1.99 | 2.02 | 2.06 | 2.06 | 0.00 | 0.00 | 0.04 | 2.13 |
| Romania | 1.15 | 1.15 | 1.29 | 1.29 | 1.59 | 1.50 | 1.46 | 1.46 | 1.83 | 1.73 | 1.88 | 1.88 | 0.00 | 0.00 | 0.16 | 8.99 |
| Others | 19.57 | 19.22 | 19.57 | 19.40 | 1.03 | 1.01 | 1.01 | 1.00 | 20.17 | 19.47 | 19.72 | 19.45 | -0.27 | -1.35 | -0.01 | -0.06 |

World and Selected Countries and Regions
1/ (soybeans, sunflowerseed, rapeseed, cottonseed, and peanuts)

2/9/2007 9:33:03 AM

Table 11 Soybean Area, Yield, and Production
1000 Metric Tons

| Country / Region | Area (Million hectares) | | | | Yield (Metric tons per hectare) | | | | Production (Million metric tons) | | | | Change in Production | | | |
|----------------------------|----------------------------|---------|---------------|-------|------------------------------------|---------|---------------|------|-------------------------------------|---------|---------------|--------|----------------------|---------|----------------|---------|
| | Prel. | | 2006/07 Proj. | | Prel. | | 2006/07 Proj. | | Prel. | | 2006/07 Proj. | | From last month | | From last year | |
| | 2004/05 | 2005/06 | Jan | Feb | 2004/05 | 2005/06 | Jan | Feb | 2004/05 | 2005/06 | Jan | Feb | MMT | Percent | MMT | Percent |
| World | 93.18 | 92.21 | 93.39 | 93.49 | 2.32 | 2.36 | 2.43 | 2.44 | 215.72 | 217.89 | 226.85 | 228.40 | 1.55 | 0.68 | 10.50 | 4.82 |
| United States | 29.93 | 28.83 | 30.19 | 30.19 | 2.84 | 2.91 | 2.87 | 2.87 | 85.01 | 83.37 | 86.77 | 86.77 | 0.00 | 0.00 | 3.40 | 4.08 |
| Total Foreign | 63.25 | 63.37 | 63.20 | 63.30 | 2.07 | 2.12 | 2.22 | 2.24 | 130.71 | 134.53 | 140.08 | 141.63 | 1.55 | 1.11 | 7.10 | 5.28 |
| South America | | | | | | | | | | | | | | | | |
| Brazil | 22.92 | 22.00 | 21.00 | 21.00 | 2.31 | 2.50 | 2.67 | 2.67 | 53.00 | 55.00 | 56.00 | 56.00 | 0.00 | 0.00 | 1.00 | 1.82 |
| Argentina | 14.40 | 15.20 | 15.70 | 15.80 | 2.71 | 2.66 | 2.71 | 2.78 | 39.00 | 40.50 | 42.50 | 44.00 | 1.50 | 3.53 | 3.50 | 8.64 |
| Paraguay | 2.00 | 2.00 | 2.00 | 2.00 | 2.03 | 2.00 | 2.35 | 2.35 | 4.05 | 4.00 | 4.70 | 4.70 | 0.00 | 0.00 | 0.70 | 17.50 |
| Bolivia | 0.92 | 0.95 | 0.99 | 0.99 | 2.20 | 2.17 | 2.17 | 2.17 | 2.03 | 2.06 | 2.15 | 2.15 | 0.00 | 0.00 | 0.09 | 4.37 |
| Uruguay | 0.28 | 0.30 | 0.32 | 0.32 | 1.79 | 1.83 | 1.88 | 1.88 | 0.50 | 0.55 | 0.60 | 0.60 | 0.00 | 0.00 | 0.05 | 9.09 |
| East Asia | | | | | | | | | | | | | | | | |
| China, Peoples | 9.59 | 9.59 | 9.30 | 9.30 | 1.81 | 1.70 | 1.74 | 1.74 | 17.40 | 16.35 | 16.20 | 16.20 | 0.00 | 0.00 | -0.15 | -0.92 |
| Korea, Republic of | 0.09 | 0.11 | 0.10 | 0.10 | 1.64 | 1.74 | 1.50 | 1.50 | 0.14 | 0.18 | 0.15 | 0.15 | 0.00 | 0.00 | -0.03 | -18.03 |
| Korea, Democratic | 0.13 | 0.14 | 0.32 | 0.14 | 1.02 | 1.26 | 1.14 | 1.19 | 0.13 | 0.17 | 0.36 | 0.16 | -0.20 | -55.56 | -0.01 | -5.88 |
| Japan | 0.14 | 0.14 | 0.14 | 0.14 | 1.20 | 1.65 | 1.48 | 1.48 | 0.17 | 0.23 | 0.20 | 0.20 | 0.00 | 0.00 | -0.03 | -11.50 |
| India | 7.99 | 7.74 | 7.70 | 7.70 | 0.73 | 0.81 | 0.95 | 0.95 | 5.85 | 6.30 | 7.30 | 7.30 | 0.00 | 0.00 | 1.00 | 15.87 |
| Canada | 1.17 | 1.17 | 1.23 | 1.23 | 2.59 | 2.70 | 2.86 | 2.86 | 3.04 | 3.16 | 3.50 | 3.50 | 0.00 | 0.00 | 0.34 | 10.72 |
| Former Soviet Union | | | | | | | | | | | | | | | | |
| Ukraine | 0.26 | 0.43 | 0.70 | 0.71 | 1.42 | 1.43 | 1.21 | 1.25 | 0.36 | 0.61 | 0.85 | 0.89 | 0.04 | 4.71 | 0.28 | 45.90 |
| Russian Federation | 0.56 | 0.66 | 0.70 | 0.85 | 1.00 | 1.05 | 1.07 | 1.06 | 0.56 | 0.69 | 0.75 | 0.90 | 0.15 | 20.00 | 0.21 | 30.62 |
| Southeast Asia | | | | | | | | | | | | | | | | |
| Indonesia | 0.64 | 0.65 | 0.65 | 0.65 | 1.29 | 1.28 | 1.30 | 1.30 | 0.83 | 0.83 | 0.85 | 0.85 | 0.00 | 0.00 | 0.01 | 1.56 |
| Vietnam | 0.18 | 0.20 | 0.19 | 0.21 | 1.33 | 1.43 | 1.32 | 1.47 | 0.24 | 0.29 | 0.25 | 0.31 | 0.06 | 23.60 | 0.02 | 5.82 |
| Thailand | 0.17 | 0.16 | 0.16 | 0.16 | 1.45 | 1.44 | 1.44 | 1.44 | 0.24 | 0.23 | 0.23 | 0.23 | 0.00 | 0.00 | 0.00 | 0.00 |
| Burma, Union of | 0.14 | 0.14 | 0.14 | 0.14 | 1.10 | 1.09 | 1.09 | 1.09 | 0.15 | 0.15 | 0.15 | 0.15 | 0.00 | 0.00 | 0.00 | 0.00 |
| European Union | | | | | | | | | | | | | | | | |
| Italy | 0.15 | 0.18 | 0.18 | 0.18 | 3.32 | 3.14 | 3.33 | 3.33 | 0.50 | 0.55 | 0.60 | 0.60 | 0.00 | 0.00 | 0.05 | 9.09 |
| France | 0.06 | 0.06 | 0.06 | 0.06 | 2.49 | 2.64 | 2.64 | 2.64 | 0.15 | 0.15 | 0.15 | 0.15 | 0.00 | 0.00 | 0.00 | 0.00 |
| Sub-Saharan Africa | | | | | | | | | | | | | | | | |
| South Africa, Republic | 0.15 | 0.24 | 0.22 | 0.22 | 1.82 | 1.73 | 1.70 | 1.70 | 0.27 | 0.41 | 0.38 | 0.38 | 0.00 | 0.00 | -0.04 | -9.42 |
| Nigeria | 0.41 | 0.41 | 0.42 | 0.42 | 1.00 | 1.00 | 1.00 | 1.00 | 0.41 | 0.41 | 0.42 | 0.42 | 0.00 | 0.00 | 0.01 | 1.22 |
| Uganda | 0.15 | 0.15 | 0.15 | 0.15 | 1.10 | 1.10 | 1.10 | 1.10 | 0.17 | 0.17 | 0.17 | 0.17 | 0.00 | 0.00 | 0.00 | 0.00 |
| Other Europe | | | | | | | | | | | | | | | | |
| Serbia and | 0.13 | 0.13 | 0.17 | 0.17 | 2.31 | 2.31 | 2.12 | 2.12 | 0.30 | 0.30 | 0.35 | 0.35 | 0.00 | 0.00 | 0.05 | 16.67 |
| Romania | 0.12 | 0.12 | 0.14 | 0.14 | 2.46 | 2.48 | 2.29 | 2.29 | 0.30 | 0.30 | 0.32 | 0.32 | 0.00 | 0.00 | 0.02 | 6.67 |
| Mexico | 0.09 | 0.10 | 0.11 | 0.11 | 1.50 | 1.49 | 1.45 | 1.45 | 0.13 | 0.15 | 0.16 | 0.16 | 0.00 | 0.00 | 0.02 | 10.34 |
| Iran | 0.09 | 0.08 | 0.08 | 0.08 | 1.50 | 1.38 | 1.38 | 1.38 | 0.14 | 0.11 | 0.11 | 0.11 | 0.00 | 0.00 | 0.00 | 0.00 |
| Others | 0.34 | 0.35 | 0.36 | 0.36 | 1.97 | 1.95 | 1.96 | 1.96 | 0.67 | 0.68 | 0.70 | 0.70 | 0.00 | 0.00 | 0.02 | 2.93 |

World and Selected Countries and Regions

2/9/2007 9:32:58 AM

Table 12 Cottonseed Area, Yield, and Production
1000 Metric Tons

| Country / Region | Area (Million hectares) | | | | Yield (Metric tons per hectare) | | | | Production (Million metric tons) | | | | Change in Production | | | |
|----------------------------|----------------------------|---------|---------------|-------|------------------------------------|---------|---------------|------|-------------------------------------|---------|---------------|-------|----------------------|---------|----------------|---------|
| | Prel. | | 2006/07 Proj. | | Prel. | | 2006/07 Proj. | | Prel. | | 2006/07 Proj. | | From last month | | From last year | |
| | 2004/05 | 2005/06 | Jan | Feb | 2004/05 | 2005/06 | Jan | Feb | 2004/05 | 2005/06 | Jan | Feb | MMT | Percent | MMT | Percent |
| World | 34.63 | 33.38 | 33.62 | 33.60 | 1.31 | 1.27 | 1.30 | 1.30 | 45.32 | 42.50 | 43.78 | 43.69 | -0.09 | -0.21 | 1.19 | 2.80 |
| United States | 5.28 | 5.59 | 5.15 | 5.15 | 1.41 | 1.33 | 1.34 | 1.34 | 7.44 | 7.41 | 6.92 | 6.92 | 0.00 | 0.00 | -0.49 | -6.61 |
| Total Foreign | 29.35 | 27.80 | 28.47 | 28.44 | 1.29 | 1.26 | 1.29 | 1.29 | 37.88 | 35.09 | 36.86 | 36.77 | -0.09 | -0.25 | 1.68 | 4.78 |
| China, Peoples | 5.69 | 5.06 | 5.35 | 5.35 | 2.02 | 2.03 | 2.25 | 2.26 | 11.50 | 10.27 | 12.05 | 12.10 | 0.05 | 0.41 | 1.83 | 17.82 |
| South Asia | | | | | | | | | | | | | | | | |
| India | 8.92 | 8.83 | 9.20 | 9.20 | 0.90 | 0.93 | 0.93 | 0.93 | 8.07 | 8.20 | 8.60 | 8.60 | 0.00 | 0.00 | 0.40 | 4.88 |
| Pakistan | 3.19 | 3.10 | 3.25 | 3.25 | 1.56 | 1.43 | 1.35 | 1.35 | 4.96 | 4.42 | 4.40 | 4.40 | 0.00 | 0.00 | -0.02 | -0.50 |
| Former Soviet Union | | | | | | | | | | | | | | | | |
| Uzbekistan, Republic | 1.42 | 1.43 | 1.42 | 1.42 | 1.59 | 1.68 | 1.65 | 1.65 | 2.25 | 2.40 | 2.35 | 2.35 | 0.00 | 0.00 | -0.05 | -2.08 |
| Turkmenistan | 0.50 | 0.70 | 0.60 | 0.60 | 0.72 | 0.54 | 0.65 | 0.65 | 0.36 | 0.38 | 0.39 | 0.39 | 0.00 | 0.00 | 0.01 | 2.63 |
| Tajikistan, Republic of | 0.29 | 0.26 | 0.26 | 0.26 | 1.09 | 0.96 | 0.96 | 0.96 | 0.32 | 0.25 | 0.25 | 0.25 | 0.00 | 0.00 | 0.00 | 0.00 |
| Kazakhstan, Republic | 0.22 | 0.20 | 0.20 | 0.20 | 1.23 | 1.33 | 1.33 | 1.33 | 0.27 | 0.27 | 0.26 | 0.26 | 0.00 | 0.00 | -0.01 | -1.89 |
| South America | | | | | | | | | | | | | | | | |
| Brazil | 1.17 | 0.85 | 1.03 | 1.03 | 1.96 | 2.02 | 2.14 | 2.14 | 2.30 | 1.71 | 2.20 | 2.20 | 0.00 | 0.00 | 0.49 | 28.43 |
| Argentina | 0.37 | 0.31 | 0.40 | 0.40 | 0.64 | 0.72 | 0.71 | 0.71 | 0.24 | 0.22 | 0.29 | 0.29 | 0.00 | 0.00 | 0.07 | 29.55 |
| Middle East | | | | | | | | | | | | | | | | |
| Turkey | 0.70 | 0.60 | 0.70 | 0.70 | 1.93 | 1.88 | 1.82 | 1.82 | 1.35 | 1.13 | 1.27 | 1.27 | 0.00 | 0.00 | 0.15 | 13.07 |
| Syria | 0.23 | 0.23 | 0.23 | 0.23 | 2.64 | 2.94 | 2.06 | 2.06 | 0.62 | 0.66 | 0.46 | 0.46 | 0.00 | 0.00 | -0.20 | -29.95 |
| Iran | 0.17 | 0.11 | 0.16 | 0.16 | 0.94 | 1.02 | 1.01 | 1.01 | 0.16 | 0.11 | 0.16 | 0.16 | 0.00 | 0.00 | 0.05 | 48.15 |
| Australia | 0.31 | 0.34 | 0.16 | 0.16 | 2.90 | 2.56 | 2.58 | 2.58 | 0.91 | 0.86 | 0.40 | 0.40 | 0.00 | 0.00 | -0.46 | -53.49 |
| European Union | | | | | | | | | | | | | | | | |
| Greece | 0.38 | 0.36 | 0.33 | 0.33 | 1.57 | 1.80 | 1.39 | 1.39 | 0.60 | 0.64 | 0.45 | 0.45 | 0.00 | 0.00 | -0.19 | -29.11 |
| Spain | 0.09 | 0.09 | 0.06 | 0.06 | 1.75 | 1.84 | 0.95 | 1.05 | 0.16 | 0.16 | 0.06 | 0.06 | 0.01 | 10.53 | -0.10 | -60.13 |
| Sub-Saharan Africa | | | | | | | | | | | | | | | | |
| Burkina | 0.59 | 0.63 | 0.70 | 0.70 | 0.56 | 0.59 | 0.58 | 0.61 | 0.33 | 0.37 | 0.41 | 0.43 | 0.02 | 4.90 | 0.06 | 14.75 |
| Mali | 0.56 | 0.56 | 0.54 | 0.54 | 0.56 | 0.52 | 0.52 | 0.47 | 0.31 | 0.29 | 0.28 | 0.26 | -0.03 | -9.89 | -0.04 | -12.07 |
| Cameroon | 0.22 | 0.23 | 0.23 | 0.23 | 1.14 | 0.92 | 1.05 | 1.05 | 0.25 | 0.21 | 0.24 | 0.24 | 0.00 | 0.00 | 0.03 | 14.49 |
| Sudan | 0.21 | 0.17 | 0.15 | 0.15 | 1.28 | 1.12 | 1.03 | 0.77 | 0.27 | 0.19 | 0.15 | 0.12 | -0.04 | -25.32 | -0.08 | -39.47 |
| Zimbabwe | 0.30 | 0.35 | 0.39 | 0.39 | 0.47 | 0.55 | 0.51 | 0.51 | 0.14 | 0.19 | 0.20 | 0.20 | 0.00 | 0.00 | 0.01 | 3.09 |
| Nigeria | 0.38 | 0.38 | 0.38 | 0.38 | 0.47 | 0.46 | 0.46 | 0.46 | 0.18 | 0.18 | 0.18 | 0.18 | 0.00 | 0.00 | 0.00 | 0.00 |
| Benin | 0.31 | 0.20 | 0.29 | 0.29 | 0.80 | 0.62 | 0.64 | 0.64 | 0.25 | 0.12 | 0.18 | 0.18 | 0.00 | 0.00 | 0.06 | 46.77 |
| Uganda | 0.40 | 0.27 | 0.27 | 0.27 | 0.44 | 0.29 | 0.65 | 0.40 | 0.18 | 0.08 | 0.18 | 0.11 | -0.07 | -37.71 | 0.03 | 37.97 |
| Egypt | 0.31 | 0.27 | 0.24 | 0.24 | 1.41 | 1.41 | 1.21 | 1.21 | 0.43 | 0.39 | 0.29 | 0.29 | 0.00 | 0.00 | -0.10 | -24.87 |
| Mexico | 0.11 | 0.13 | 0.13 | 0.11 | 2.01 | 1.73 | 1.71 | 1.81 | 0.21 | 0.22 | 0.22 | 0.21 | -0.01 | -4.19 | -0.01 | -5.50 |
| Burma, Union of | 0.30 | 0.30 | 0.30 | 0.30 | 0.53 | 0.53 | 0.53 | 0.53 | 0.16 | 0.16 | 0.16 | 0.16 | 0.00 | 0.00 | 0.00 | 0.00 |
| Others | 2.02 | 1.87 | 1.54 | 1.52 | 0.56 | 0.55 | 0.52 | 0.51 | 1.13 | 1.03 | 0.80 | 0.77 | -0.03 | -3.14 | -0.26 | -25.00 |

World and Selected Countries and Regions

2/9/2007 9:32:57 AM

Table 13 Peanut Area, Yield, and Production
1000 Metric Tons

| Country / Region | Area (Million hectares) | | | | Yield (Metric tons per hectare) | | | | Production (Million metric tons) | | | | Change in Production | | | |
|---------------------------|----------------------------|---------|---------------|-------|------------------------------------|---------|---------------|------|-------------------------------------|---------|---------------|-------|----------------------|---------|----------------|---------|
| | Prel. | | 2006/07 Proj. | | Prel. | | 2006/07 Proj. | | Prel. | | 2006/07 Proj. | | From last month | | From last year | |
| | 2004/05 | 2005/06 | Jan | Feb | 2004/05 | 2005/06 | Jan | Feb | 2004/05 | 2005/06 | Jan | Feb | MMT | Percent | MMT | Percent |
| World | 21.49 | 21.68 | 20.61 | 20.61 | 1.56 | 1.56 | 1.54 | 1.54 | 33.43 | 33.76 | 31.69 | 31.69 | 0.00 | 0.00 | -2.07 | -6.13 |
| United States | 0.56 | 0.66 | 0.49 | 0.49 | 3.45 | 3.35 | 3.22 | 3.22 | 1.95 | 2.21 | 1.58 | 1.58 | 0.00 | 0.00 | -0.63 | -28.66 |
| Total Foreign | 20.93 | 21.02 | 20.12 | 20.12 | 1.50 | 1.50 | 1.50 | 1.50 | 31.48 | 31.55 | 30.12 | 30.12 | 0.00 | 0.00 | -1.44 | -4.55 |
| China, Peoples | 4.75 | 4.66 | 4.60 | 4.60 | 3.02 | 3.08 | 3.04 | 3.04 | 14.34 | 14.34 | 14.00 | 14.00 | 0.00 | 0.00 | -0.34 | -2.37 |
| South Asia | | | | | | | | | | | | | | | | |
| India | 6.80 | 6.90 | 6.00 | 6.00 | 1.03 | 1.04 | 0.98 | 0.98 | 7.00 | 7.20 | 5.90 | 5.90 | 0.00 | 0.00 | -1.30 | -18.06 |
| Pakistan | 0.09 | 0.09 | 0.09 | 0.09 | 1.03 | 1.03 | 1.03 | 1.03 | 0.10 | 0.10 | 0.10 | 0.10 | 0.00 | 0.00 | 0.00 | 0.00 |
| Sub-Saharan Africa | | | | | | | | | | | | | | | | |
| Nigeria | 1.24 | 1.24 | 1.24 | 1.24 | 1.23 | 1.23 | 1.23 | 1.23 | 1.52 | 1.52 | 1.52 | 1.52 | 0.00 | 0.00 | 0.00 | 0.00 |
| Senegal | 0.75 | 0.85 | 0.85 | 0.85 | 0.77 | 0.82 | 0.82 | 0.82 | 0.57 | 0.70 | 0.70 | 0.70 | 0.00 | 0.00 | 0.00 | 0.00 |
| Chad | 0.48 | 0.48 | 0.48 | 0.48 | 0.94 | 0.94 | 0.94 | 0.94 | 0.45 | 0.45 | 0.45 | 0.45 | 0.00 | 0.00 | 0.00 | 0.00 |
| Ghana | 0.47 | 0.47 | 0.47 | 0.47 | 0.94 | 0.94 | 0.94 | 0.94 | 0.44 | 0.44 | 0.44 | 0.44 | 0.00 | 0.00 | 0.00 | 0.00 |
| Sudan | 0.55 | 0.55 | 0.55 | 0.55 | 0.67 | 0.67 | 0.67 | 0.67 | 0.37 | 0.37 | 0.37 | 0.37 | 0.00 | 0.00 | 0.00 | 0.00 |
| Congo, Democratic | 0.46 | 0.46 | 0.46 | 0.46 | 0.79 | 0.79 | 0.79 | 0.79 | 0.36 | 0.37 | 0.37 | 0.37 | 0.00 | 0.00 | 0.00 | 0.00 |
| Burkina | 0.35 | 0.35 | 0.35 | 0.35 | 0.93 | 0.93 | 0.93 | 0.93 | 0.32 | 0.32 | 0.32 | 0.32 | 0.00 | 0.00 | 0.00 | 0.00 |
| Guinea | 0.21 | 0.21 | 0.21 | 0.21 | 1.19 | 1.19 | 1.19 | 1.19 | 0.25 | 0.25 | 0.25 | 0.25 | 0.00 | 0.00 | 0.00 | 0.00 |
| Cameroon | 0.21 | 0.21 | 0.21 | 0.21 | 0.98 | 0.98 | 0.98 | 0.98 | 0.20 | 0.20 | 0.20 | 0.20 | 0.00 | 0.00 | 0.00 | 0.00 |
| Mali | 0.21 | 0.21 | 0.21 | 0.21 | 0.86 | 0.86 | 0.86 | 0.86 | 0.18 | 0.18 | 0.18 | 0.18 | 0.00 | 0.00 | 0.00 | 0.00 |
| Malawi | 0.21 | 0.21 | 0.21 | 0.21 | 0.76 | 0.76 | 0.76 | 0.76 | 0.16 | 0.16 | 0.16 | 0.16 | 0.00 | 0.00 | 0.00 | 0.00 |
| Cote d'Ivoire | 0.15 | 0.15 | 0.15 | 0.15 | 1.00 | 1.00 | 1.00 | 1.00 | 0.15 | 0.15 | 0.15 | 0.15 | 0.00 | 0.00 | 0.00 | 0.00 |
| Uganda | 0.21 | 0.21 | 0.21 | 0.21 | 0.70 | 0.70 | 0.70 | 0.70 | 0.15 | 0.15 | 0.15 | 0.15 | 0.00 | 0.00 | 0.00 | 0.00 |
| Central African | 0.13 | 0.13 | 0.13 | 0.13 | 1.12 | 1.12 | 1.12 | 1.12 | 0.14 | 0.14 | 0.14 | 0.14 | 0.00 | 0.00 | 0.00 | 0.00 |
| Benin | 0.16 | 0.16 | 0.16 | 0.16 | 0.81 | 0.81 | 0.81 | 0.81 | 0.13 | 0.13 | 0.13 | 0.13 | 0.00 | 0.00 | 0.00 | 0.00 |
| Mozambique | 0.29 | 0.29 | 0.29 | 0.29 | 0.38 | 0.38 | 0.38 | 0.38 | 0.11 | 0.11 | 0.11 | 0.11 | 0.00 | 0.00 | 0.00 | 0.00 |
| Niger | 0.26 | 0.26 | 0.26 | 0.26 | 0.42 | 0.42 | 0.42 | 0.42 | 0.11 | 0.11 | 0.11 | 0.11 | 0.00 | 0.00 | 0.00 | 0.00 |
| South Africa, Republic | 0.04 | 0.05 | 0.05 | 0.05 | 2.13 | 1.86 | 1.70 | 1.70 | 0.09 | 0.09 | 0.09 | 0.09 | 0.00 | 0.00 | -0.01 | -8.60 |
| Southeast Asia | | | | | | | | | | | | | | | | |
| Indonesia | 0.72 | 0.74 | 0.75 | 0.75 | 1.60 | 1.58 | 1.60 | 1.60 | 1.15 | 1.17 | 1.20 | 1.20 | 0.00 | 0.00 | 0.03 | 2.56 |
| Burma, Union of | 0.58 | 0.58 | 0.58 | 0.58 | 1.24 | 1.23 | 1.24 | 1.24 | 0.72 | 0.72 | 0.72 | 0.72 | 0.00 | 0.00 | 0.01 | 0.70 |
| Vietnam | 0.26 | 0.26 | 0.26 | 0.26 | 1.74 | 1.73 | 1.73 | 1.73 | 0.45 | 0.45 | 0.45 | 0.45 | 0.00 | 0.00 | 0.00 | 0.00 |
| Thailand | 0.09 | 0.09 | 0.09 | 0.09 | 1.53 | 1.53 | 1.53 | 1.53 | 0.13 | 0.13 | 0.13 | 0.13 | 0.00 | 0.00 | 0.00 | 0.00 |
| South America | | | | | | | | | | | | | | | | |
| Argentina | 0.21 | 0.16 | 0.20 | 0.20 | 2.79 | 2.12 | 2.50 | 2.50 | 0.59 | 0.35 | 0.50 | 0.50 | 0.00 | 0.00 | 0.15 | 44.09 |
| Brazil | 0.13 | 0.12 | 0.12 | 0.12 | 2.28 | 2.17 | 2.17 | 2.17 | 0.29 | 0.25 | 0.25 | 0.25 | 0.00 | 0.00 | 0.00 | 0.00 |
| Egypt | 0.06 | 0.06 | 0.06 | 0.06 | 3.17 | 3.17 | 3.17 | 3.17 | 0.19 | 0.19 | 0.19 | 0.19 | 0.00 | 0.00 | 0.00 | 0.00 |
| Mexico | 0.06 | 0.05 | 0.06 | 0.06 | 1.52 | 1.47 | 1.52 | 1.52 | 0.09 | 0.07 | 0.09 | 0.09 | 0.00 | 0.00 | 0.02 | 34.78 |
| Others | 0.84 | 0.84 | 0.84 | 0.84 | 0.90 | 0.91 | 0.91 | 0.91 | 0.75 | 0.76 | 0.76 | 0.76 | 0.00 | 0.00 | 0.00 | 0.00 |

World and Selected Countries and Regions

2/9/2007 9:32:58 AM

Table 14 Sunflowerseed Area, Yield, and Production
1000 Metric Tons

| Country / Region | Area (Million hectares) | | | | Yield (Metric tons per hectare) | | | | Production (Million metric tons) | | | | Change in Production | | | |
|----------------------------|----------------------------|---------|---------------|-------|------------------------------------|---------|---------------|------|-------------------------------------|---------|---------------|-------|----------------------|---------|----------------|---------|
| | Prel. | | 2006/07 Proj. | | Prel. | | 2006/07 Proj. | | Prel. | | 2006/07 Proj. | | From last month | | From last year | |
| | 2004/05 | 2005/06 | Jan | Feb | 2004/05 | 2005/06 | Jan | Feb | 2004/05 | 2005/06 | Jan | Feb | MMT | Percent | MMT | Percent |
| World | 20.77 | 22.66 | 23.47 | 23.58 | 1.22 | 1.31 | 1.30 | 1.30 | 25.30 | 29.73 | 30.45 | 30.67 | 0.22 | 0.72 | 0.94 | 3.18 |
| United States | 0.69 | 1.06 | 0.72 | 0.72 | 1.34 | 1.73 | 1.36 | 1.36 | 0.93 | 1.82 | 0.97 | 0.97 | 0.00 | 0.00 | -0.85 | -46.68 |
| Total Foreign | 20.08 | 21.60 | 22.76 | 22.86 | 1.21 | 1.29 | 1.30 | 1.30 | 24.37 | 27.90 | 29.48 | 29.70 | 0.22 | 0.75 | 1.80 | 6.43 |
| Former Soviet Union | | | | | | | | | | | | | | | | |
| Russian Federation | 4.65 | 5.40 | 5.80 | 5.80 | 1.03 | 1.19 | 1.16 | 1.16 | 4.80 | 6.45 | 6.70 | 6.70 | 0.00 | 0.00 | 0.25 | 3.88 |
| Ukraine | 3.40 | 3.69 | 3.80 | 3.90 | 0.90 | 1.27 | 1.32 | 1.36 | 3.05 | 4.70 | 5.00 | 5.30 | 0.30 | 6.00 | 0.60 | 12.77 |
| Moldova, Republic of | 0.25 | 0.20 | 0.25 | 0.25 | 1.44 | 1.50 | 1.40 | 1.40 | 0.36 | 0.30 | 0.35 | 0.35 | 0.00 | 0.00 | 0.05 | 16.67 |
| Kazakhstan, Republic | 0.40 | 0.40 | 0.40 | 0.40 | 0.66 | 0.66 | 0.66 | 0.66 | 0.27 | 0.27 | 0.27 | 0.27 | 0.00 | 0.00 | 0.00 | 0.00 |
| South America | | | | | | | | | | | | | | | | |
| Argentina | 1.89 | 2.20 | 2.30 | 2.30 | 1.90 | 1.73 | 1.74 | 1.74 | 3.60 | 3.80 | 4.00 | 4.00 | 0.00 | 0.00 | 0.20 | 5.26 |
| Uruguay | 0.13 | 0.14 | 0.14 | 0.14 | 1.28 | 1.41 | 1.41 | 1.41 | 0.17 | 0.19 | 0.19 | 0.19 | 0.00 | 0.00 | 0.00 | 0.00 |
| Bolivia | 0.16 | 0.16 | 0.16 | 0.16 | 1.06 | 1.06 | 1.06 | 1.06 | 0.17 | 0.17 | 0.17 | 0.17 | 0.00 | 0.00 | 0.00 | 0.00 |
| China, Peoples | 0.94 | 1.02 | 1.10 | 1.10 | 1.66 | 1.89 | 1.73 | 1.73 | 1.55 | 1.93 | 1.90 | 1.90 | 0.00 | 0.00 | -0.03 | -1.40 |
| European Union | | | | | | | | | | | | | | | | |
| France | 0.62 | 0.65 | 0.64 | 0.64 | 2.37 | 2.22 | 2.13 | 2.13 | 1.46 | 1.44 | 1.37 | 1.37 | 0.00 | 0.00 | -0.07 | -4.88 |
| Hungary | 0.48 | 0.51 | 0.54 | 0.54 | 2.50 | 2.17 | 2.34 | 2.18 | 1.20 | 1.11 | 1.25 | 1.17 | -0.08 | -6.40 | 0.06 | 5.41 |
| Spain | 0.75 | 0.52 | 0.65 | 0.65 | 1.05 | 0.74 | 1.00 | 1.00 | 0.79 | 0.38 | 0.65 | 0.65 | 0.00 | 0.00 | 0.27 | 71.05 |
| Italy | 0.12 | 0.13 | 0.15 | 0.15 | 2.21 | 2.08 | 2.07 | 2.07 | 0.27 | 0.27 | 0.31 | 0.31 | 0.00 | 0.00 | 0.04 | 14.81 |
| Slovakia | 0.09 | 0.10 | 0.10 | 0.10 | 2.18 | 2.37 | 2.11 | 2.11 | 0.20 | 0.23 | 0.20 | 0.20 | 0.00 | 0.00 | -0.03 | -11.11 |
| South Asia | | | | | | | | | | | | | | | | |
| India | 2.30 | 2.40 | 2.50 | 2.50 | 0.53 | 0.59 | 0.60 | 0.60 | 1.22 | 1.42 | 1.50 | 1.50 | 0.00 | 0.00 | 0.08 | 5.93 |
| Pakistan | 0.18 | 0.18 | 0.18 | 0.18 | 1.24 | 1.24 | 1.24 | 1.24 | 0.23 | 0.23 | 0.23 | 0.23 | 0.00 | 0.00 | 0.00 | 0.00 |
| Other Europe | | | | | | | | | | | | | | | | |
| Romania | 0.95 | 0.96 | 1.05 | 1.05 | 1.50 | 1.39 | 1.38 | 1.38 | 1.43 | 1.34 | 1.45 | 1.45 | 0.00 | 0.00 | 0.12 | 8.61 |
| Bulgaria | 0.49 | 0.58 | 0.71 | 0.71 | 1.73 | 1.47 | 1.62 | 1.62 | 0.85 | 0.85 | 1.15 | 1.15 | 0.00 | 0.00 | 0.30 | 35.29 |
| Serbia and | 0.21 | 0.21 | 0.21 | 0.21 | 2.10 | 2.05 | 1.90 | 1.90 | 0.44 | 0.43 | 0.40 | 0.40 | 0.00 | 0.00 | -0.03 | -6.98 |
| Turkey | 0.48 | 0.51 | 0.51 | 0.51 | 1.35 | 1.47 | 1.37 | 1.37 | 0.65 | 0.75 | 0.70 | 0.70 | 0.00 | 0.00 | -0.05 | -6.67 |
| South Africa, | 0.46 | 0.47 | 0.37 | 0.37 | 1.35 | 1.12 | 1.30 | 1.30 | 0.62 | 0.53 | 0.48 | 0.48 | 0.00 | 0.00 | -0.05 | -9.09 |
| Burma, Union of | 0.52 | 0.52 | 0.52 | 0.52 | 0.67 | 0.67 | 0.67 | 0.67 | 0.35 | 0.35 | 0.35 | 0.35 | 0.00 | 0.00 | 0.00 | 0.00 |
| Canada | 0.06 | 0.08 | 0.08 | 0.08 | 1.00 | 1.19 | 2.00 | 2.00 | 0.06 | 0.09 | 0.15 | 0.15 | 0.00 | 0.00 | 0.06 | 68.54 |
| Australia | 0.05 | 0.09 | 0.08 | 0.08 | 1.35 | 1.27 | 1.25 | 1.25 | 0.06 | 0.11 | 0.10 | 0.10 | 0.00 | 0.00 | -0.01 | -10.71 |
| Others | 0.51 | 0.50 | 0.53 | 0.53 | 1.14 | 1.19 | 1.16 | 1.16 | 0.58 | 0.59 | 0.62 | 0.62 | 0.00 | 0.00 | 0.03 | 4.55 |

World and Selected Countries and Regions

2/9/2007 9:32:58 AM

Table 15 Rapeseed Area, Yield, and Production
1000 Metric Tons

| Country / Region | Area (Million hectares) | | | | Yield (Metric tons per hectare) | | | | Production (Million metric tons) | | | | Change in Production | | | |
|----------------------------|----------------------------|--------------------|----------------|-------------------------|------------------------------------|--------------------|----------------|-------------------------|-------------------------------------|--------------------|----------------|-------------------------|------------------------|----------------------------|-----------------------|---------------------------|
| | Prel. 2004/05 | 2006/07 2005/06 | 2006/07 Jan | 2006/07 Proj. Feb | Prel. 2004/05 | 2006/07 2005/06 | 2006/07 Jan | 2006/07 Proj. Feb | Prel. 2004/05 | 2006/07 2005/06 | 2006/07 Jan | 2006/07 Proj. Feb | From last month MMT | From last month Percent | From last year MMT | From last year Percent |
| World | 26.79 | 27.36 | 27.22 | 27.21 | 1.72 | 1.77 | 1.71 | 1.71 | 46.14 | 48.55 | 46.61 | 46.58 | -0.03 | -0.06 | -1.97 | -4.05 |
| United States | 0.34 | 0.45 | 0.41 | 0.41 | 1.81 | 1.59 | 1.53 | 1.53 | 0.61 | 0.72 | 0.63 | 0.63 | 0.00 | 0.00 | -0.09 | -11.96 |
| Total Foreign | 26.45 | 26.90 | 26.81 | 26.80 | 1.72 | 1.78 | 1.72 | 1.71 | 45.53 | 47.83 | 45.98 | 45.95 | -0.03 | -0.07 | -1.88 | -3.93 |
| European Union | | | | | | | | | | | | | | | | |
| Germany | 1.28 | 1.35 | 1.43 | 1.43 | 4.11 | 3.75 | 3.71 | 3.71 | 5.28 | 5.05 | 5.30 | 5.30 | 0.00 | 0.00 | 0.25 | 4.95 |
| France | 1.13 | 1.21 | 1.38 | 1.38 | 3.55 | 3.68 | 2.97 | 2.96 | 4.00 | 4.45 | 4.10 | 4.10 | 0.00 | 0.00 | -0.35 | -7.87 |
| United Kingdom | 0.56 | 0.60 | 0.58 | 0.58 | 2.88 | 3.19 | 3.30 | 3.25 | 1.61 | 1.90 | 1.90 | 1.87 | -0.03 | -1.58 | -0.03 | -1.58 |
| Poland | 0.54 | 0.55 | 0.60 | 0.60 | 3.04 | 2.73 | 2.67 | 2.67 | 1.63 | 1.50 | 1.60 | 1.60 | 0.00 | 0.00 | 0.10 | 6.67 |
| Czech Republic | 0.26 | 0.27 | 0.29 | 0.29 | 3.61 | 2.88 | 3.05 | 3.05 | 0.94 | 0.77 | 0.89 | 0.89 | 0.00 | 0.00 | 0.12 | 15.73 |
| Denmark | 0.12 | 0.11 | 0.13 | 0.13 | 3.84 | 3.27 | 3.27 | 3.27 | 0.47 | 0.36 | 0.43 | 0.43 | 0.00 | 0.00 | 0.07 | 18.06 |
| Hungary | 0.10 | 0.12 | 0.14 | 0.14 | 2.76 | 2.31 | 2.36 | 2.34 | 0.29 | 0.28 | 0.33 | 0.33 | 0.00 | 0.00 | 0.05 | 17.86 |
| Slovakia | 0.09 | 0.11 | 0.13 | 0.13 | 2.89 | 2.20 | 2.16 | 2.16 | 0.26 | 0.24 | 0.27 | 0.27 | 0.00 | 0.00 | 0.04 | 14.89 |
| Sweden | 0.09 | 0.08 | 0.09 | 0.09 | 2.71 | 2.44 | 2.44 | 2.44 | 0.23 | 0.20 | 0.22 | 0.22 | 0.00 | 0.00 | 0.02 | 10.00 |
| Lithuania | 0.10 | 0.10 | 0.10 | 0.10 | 2.03 | 1.70 | 1.70 | 1.70 | 0.21 | 0.17 | 0.17 | 0.17 | 0.00 | 0.00 | 0.00 | 0.00 |
| Latvia | 0.06 | 0.08 | 0.08 | 0.08 | 1.89 | 1.73 | 1.73 | 1.73 | 0.10 | 0.13 | 0.13 | 0.13 | 0.00 | 0.00 | 0.00 | 0.00 |
| Austria | 0.04 | 0.04 | 0.05 | 0.05 | 3.46 | 2.97 | 2.67 | 2.67 | 0.12 | 0.10 | 0.12 | 0.12 | 0.00 | 0.00 | 0.02 | 15.38 |
| Finland | 0.07 | 0.08 | 0.08 | 0.08 | 1.10 | 1.47 | 1.33 | 1.33 | 0.08 | 0.11 | 0.10 | 0.10 | 0.00 | 0.00 | -0.01 | -9.09 |
| Estonia | 0.05 | 0.05 | 0.06 | 0.06 | 1.38 | 1.67 | 1.45 | 1.45 | 0.07 | 0.08 | 0.08 | 0.08 | 0.00 | 0.00 | 0.01 | 6.67 |
| China, Peoples | 7.27 | 7.28 | 7.20 | 7.20 | 1.81 | 1.79 | 1.74 | 1.74 | 13.18 | 13.05 | 12.50 | 12.50 | 0.00 | 0.00 | -0.55 | -4.21 |
| South Asia | | | | | | | | | | | | | | | | |
| India | 7.15 | 7.30 | 6.70 | 6.70 | 0.91 | 0.93 | 0.93 | 0.93 | 6.50 | 6.80 | 6.20 | 6.20 | 0.00 | 0.00 | -0.60 | -8.82 |
| Pakistan | 0.29 | 0.30 | 0.30 | 0.30 | 0.83 | 0.87 | 0.87 | 0.87 | 0.24 | 0.26 | 0.26 | 0.26 | 0.00 | 0.00 | 0.00 | 0.00 |
| Bangladesh | 0.30 | 0.30 | 0.31 | 0.31 | 0.77 | 0.83 | 0.82 | 0.82 | 0.23 | 0.25 | 0.26 | 0.26 | 0.00 | 0.00 | 0.01 | 2.82 |
| Canada | 4.94 | 5.28 | 5.30 | 5.30 | 1.57 | 1.83 | 1.72 | 1.72 | 7.73 | 9.66 | 9.10 | 9.10 | 0.00 | 0.00 | -0.56 | -5.80 |
| Australia | 1.35 | 0.96 | 0.70 | 0.70 | 1.11 | 1.50 | 0.64 | 0.64 | 1.50 | 1.44 | 0.45 | 0.45 | 0.00 | 0.00 | -0.99 | -68.77 |
| Former Soviet Union | | | | | | | | | | | | | | | | |
| Ukraine | 0.11 | 0.20 | 0.40 | 0.39 | 1.39 | 1.46 | 1.50 | 1.54 | 0.15 | 0.29 | 0.60 | 0.60 | 0.00 | 0.00 | 0.32 | 110.53 |
| Russian Federation | 0.25 | 0.24 | 0.42 | 0.42 | 1.10 | 1.24 | 1.19 | 1.19 | 0.28 | 0.30 | 0.50 | 0.50 | 0.00 | 0.00 | 0.20 | 65.02 |
| Belarus | 0.12 | 0.12 | 0.08 | 0.08 | 1.15 | 1.00 | 0.75 | 0.75 | 0.14 | 0.12 | 0.06 | 0.06 | 0.00 | 0.00 | -0.06 | -50.00 |
| Paraguay | 0.03 | 0.05 | 0.10 | 0.10 | 1.50 | 1.50 | 1.50 | 1.50 | 0.05 | 0.08 | 0.15 | 0.15 | 0.00 | 0.00 | 0.08 | 100.00 |
| Romania | 0.08 | 0.07 | 0.10 | 0.10 | 1.35 | 1.29 | 1.10 | 1.10 | 0.10 | 0.09 | 0.11 | 0.11 | 0.00 | 0.00 | 0.02 | 22.22 |
| Others | 0.08 | 0.08 | 0.08 | 0.08 | 1.98 | 2.00 | 1.92 | 1.92 | 0.16 | 0.17 | 0.16 | 0.16 | 0.00 | 0.00 | -0.01 | -4.22 |

World and Selected Countries and Regions

2/9/2007 9:32:59 AM

Table 16 Copra, Palm Kernel, and Palm Oil Production
1000 Metric Tons

| Country / Region | Production (Million metric tons) | | | | Change in Production | | | |
|-----------------------------|-------------------------------------|------------------|---------------|-------|----------------------|---------|----------------|---------|
| | 2004/05 | Prel. 2005/06 | 2006/07 Proj. | | From last month | | From last year | |
| | | | Jan | Feb | MMT | Percent | MMT | Percent |
| Oilseed, Copra | | | | | | | | |
| Philippines | 2.45 | 2.60 | 2.00 | 2.00 | 0.00 | 0.00 | -0.60 | -0.23 |
| Indonesia | 1.40 | 1.44 | 1.44 | 1.44 | 0.00 | 0.00 | 0.00 | 0.00 |
| India | 0.74 | 0.74 | 0.74 | 0.74 | 0.00 | 0.00 | 0.00 | 0.00 |
| Vietnam | 0.24 | 0.24 | 0.24 | 0.24 | 0.00 | 0.00 | 0.00 | 0.00 |
| Mexico | 0.22 | 0.22 | 0.23 | 0.23 | 0.00 | 0.00 | 0.00 | 0.00 |
| Papua New Guinea | 0.11 | 0.11 | 0.11 | 0.11 | 0.00 | 0.00 | 0.00 | 0.00 |
| Sri Lanka | 0.08 | 0.08 | 0.08 | 0.08 | 0.00 | 0.00 | 0.00 | 0.00 |
| Thailand | 0.07 | 0.07 | 0.07 | 0.07 | 0.00 | 0.00 | 0.00 | 0.00 |
| Mozambique | 0.05 | 0.05 | 0.05 | 0.05 | 0.00 | 0.00 | 0.00 | 0.00 |
| Cote d'Ivoire | 0.05 | 0.05 | 0.05 | 0.05 | 0.00 | 0.00 | 0.00 | 0.00 |
| World | 5.59 | 5.79 | 5.19 | 5.19 | 0.00 | 0.00 | -0.59 | -0.10 |
| Oilseed, Palm Kernel | | | | | | | | |
| Indonesia | 3.85 | 4.24 | 4.73 | 4.73 | 0.00 | 0.00 | 0.49 | 0.12 |
| Malaysia | 4.04 | 4.05 | 4.37 | 4.37 | 0.00 | 0.00 | 0.32 | 0.08 |
| Nigeria | 0.65 | 0.65 | 0.67 | 0.67 | 0.00 | 0.00 | 0.01 | 0.02 |
| Thailand | 0.14 | 0.18 | 0.20 | 0.20 | 0.00 | 0.00 | 0.02 | 0.11 |
| Colombia | 0.15 | 0.16 | 0.17 | 0.17 | 0.00 | 0.00 | 0.01 | 0.06 |
| Papua New Guinea | 0.08 | 0.08 | 0.08 | 0.08 | 0.00 | 0.00 | 0.00 | 0.00 |
| Cote d'Ivoire | 0.07 | 0.08 | 0.08 | 0.08 | 0.00 | 0.00 | 0.00 | 0.00 |
| Cameroon | 0.07 | 0.07 | 0.07 | 0.07 | 0.00 | 0.00 | 0.00 | 0.00 |
| Congo, Democratic Rep of | 0.05 | 0.06 | 0.06 | 0.06 | 0.00 | 0.00 | 0.00 | 0.00 |
| Ecuador | 0.05 | 0.05 | 0.06 | 0.06 | 0.00 | 0.00 | 0.01 | 0.20 |
| World | 9.51 | 9.98 | 10.85 | 10.85 | 0.00 | 0.00 | 0.87 | 0.09 |
| Oil, Palm | | | | | | | | |
| Malaysia | 15.19 | 15.49 | 16.50 | 16.50 | 0.00 | 0.00 | 1.02 | 0.07 |
| Indonesia | 14.00 | 15.40 | 17.20 | 17.20 | 0.00 | 0.00 | 1.80 | 0.12 |
| Thailand | 0.70 | 0.90 | 1.00 | 1.00 | 0.00 | 0.00 | 0.10 | 0.11 |
| Nigeria | 0.79 | 0.80 | 0.81 | 0.81 | 0.00 | 0.00 | 0.01 | 0.01 |
| Colombia | 0.65 | 0.69 | 0.75 | 0.75 | 0.00 | 0.00 | 0.06 | 0.09 |
| Papua New Guinea | 0.38 | 0.38 | 0.38 | 0.38 | 0.00 | 0.00 | 0.00 | 0.00 |
| Cote d'Ivoire | 0.34 | 0.36 | 0.36 | 0.36 | 0.00 | 0.00 | 0.00 | 0.00 |
| Ecuador | 0.30 | 0.31 | 0.34 | 0.34 | 0.00 | 0.00 | 0.03 | 0.10 |
| Costa Rica | 0.24 | 0.29 | 0.29 | 0.29 | 0.00 | 0.00 | 0.00 | 0.00 |
| Congo, Democratic Rep of | 0.18 | 0.18 | 0.18 | 0.18 | 0.00 | 0.00 | 0.00 | 0.00 |
| World | 33.88 | 35.96 | 38.97 | 38.97 | 0.00 | 0.00 | 3.01 | 0.08 |

World and Selected Countries and Regions

2/9/2007 9:32:59 AM

Table 17 Cotton Area, Yield, and Production
1000 480 lb. Bales

| Country / Region | Area (Million hectares) | | | | Yield (Kilograms per hectare) | | | | Production (Million 480 lb. bales) | | | | Change in Production | | | |
|----------------------------|----------------------------|------------------|----------------|-------------------------|----------------------------------|------------------|----------------|-------------------------|---------------------------------------|------------------|----------------|-------------------------|---------------------------|---------|--------------------------|---------|
| | 2004/05 | Prel. 2005/06 | 2006/07 Jan | 2006/07 Proj. Feb | 2004/05 | Prel. 2005/06 | 2006/07 Jan | 2006/07 Proj. Feb | 2004/05 | Prel. 2005/06 | 2006/07 Jan | 2006/07 Proj. Feb | From last month MBales | Percent | From last year MBales | Percent |
| World | 35.774 | 34.431 | 34.634 | 34.565 | 732.000 | 722.000 | 754.000 | 734.000 | 120.194 | 114.132 | 116.718 | 116.560 | -0.158 | -0.135 | 2.428 | 2.127 |
| United States | 5.284 | 5.586 | 5.152 | 5.152 | 958.000 | 931.000 | 918.000 | 918.000 | 23.251 | 23.890 | 21.729 | 21.729 | 0.000 | 0.000 | -2.161 | -9.046 |
| Total Foreign | 30.490 | 28.845 | 29.482 | 29.413 | 692.000 | 681.000 | 702.000 | 702.000 | 96.943 | 90.242 | 94.989 | 94.831 | -0.158 | -0.166 | 4.589 | 5.085 |
| China, Peoples | 5.690 | 5.060 | 5.350 | 5.350 | 1,110.0 | 1,127.0 | 1,251.0 | 1,258.0 | 29.000 | 26.200 | 30.750 | 30.900 | 0.150 | 0.488 | 4.700 | 17.939 |
| South Asia | | | | | | | | | | | | | | | | |
| India | 8.920 | 8.830 | 9.250 | 9.250 | 464.000 | 473.000 | 494.000 | 494.000 | 19.000 | 19.200 | 21.000 | 21.000 | 0.000 | 0.000 | 1.800 | 9.375 |
| Pakistan | 3.192 | 3.100 | 3.250 | 3.250 | 760.000 | 692.000 | 643.000 | 650.000 | 11.143 | 9.850 | 9.600 | 9.700 | 0.100 | 1.042 | -0.150 | -1.523 |
| Former Soviet Union | | | | | | | | | | | | | | | | |
| Uzbekistan, Republic | 1.419 | 1.432 | 1.424 | 1.424 | 798.000 | 844.000 | 826.000 | 826.000 | 5.200 | 5.550 | 5.400 | 5.400 | 0.000 | 0.000 | -0.150 | -2.703 |
| Turkmenistan | 0.500 | 0.600 | 0.600 | 0.600 | 401.000 | 354.000 | 399.000 | 399.000 | 0.920 | 0.975 | 1.100 | 1.100 | 0.000 | 0.000 | 0.125 | 12.821 |
| Tajikistan, Republic of | 0.290 | 0.255 | 0.255 | 0.255 | 601.000 | 534.000 | 534.000 | 534.000 | 0.800 | 0.625 | 0.625 | 0.625 | 0.000 | 0.000 | 0.000 | 0.000 |
| Kazakhstan, Republic | 0.216 | 0.204 | 0.195 | 0.195 | 685.000 | 720.000 | 743.000 | 743.000 | 0.680 | 0.675 | 0.665 | 0.665 | 0.000 | 0.000 | -0.010 | -1.481 |
| Sub-Saharan Africa | | | | | | | | | | | | | | | | |
| Burkina | 0.585 | 0.630 | 0.700 | 0.700 | 439.000 | 467.000 | 459.000 | 482.000 | 1.180 | 1.350 | 1.475 | 1.550 | 0.075 | 5.085 | 0.200 | 14.815 |
| Mali | 0.560 | 0.560 | 0.540 | 0.540 | 428.000 | 399.000 | 403.000 | 363.000 | 1.100 | 1.025 | 1.000 | 0.900 | -0.100 | -10.000 | -0.125 | -12.195 |
| Zimbabwe | 0.300 | 0.350 | 0.390 | 0.390 | 269.000 | 317.000 | 293.000 | 293.000 | 0.370 | 0.510 | 0.525 | 0.525 | 0.000 | 0.000 | 0.015 | 2.941 |
| Benin | 0.310 | 0.200 | 0.285 | 0.285 | 527.000 | 408.000 | 420.000 | 420.000 | 0.750 | 0.375 | 0.550 | 0.550 | 0.000 | 0.000 | 0.175 | 46.667 |
| Cote d'Ivoire | 0.328 | 0.265 | 0.225 | 0.225 | 425.000 | 411.000 | 387.000 | 387.000 | 0.640 | 0.500 | 0.400 | 0.400 | 0.000 | 0.000 | -0.100 | -20.000 |
| Cameroon | 0.220 | 0.225 | 0.225 | 0.225 | 495.000 | 402.000 | 460.000 | 460.000 | 0.500 | 0.415 | 0.475 | 0.475 | 0.000 | 0.000 | 0.060 | 14.458 |
| Nigeria | 0.380 | 0.380 | 0.380 | 0.380 | 241.000 | 229.000 | 229.000 | 229.000 | 0.420 | 0.400 | 0.400 | 0.400 | 0.000 | 0.000 | 0.000 | 0.000 |
| Sudan | 0.210 | 0.170 | 0.150 | 0.150 | 544.000 | 474.000 | 435.000 | 327.000 | 0.525 | 0.370 | 0.300 | 0.225 | -0.075 | -25.000 | -0.145 | -39.189 |
| South America | | | | | | | | | | | | | | | | |
| Brazil | 1.172 | 0.850 | 1.030 | 1.030 | 1,096.0 | 1,204.0 | 1,268.0 | 1,268.0 | 5.900 | 4.700 | 6.000 | 6.000 | 0.000 | 0.000 | 1.300 | 27.660 |
| Argentina | 0.374 | 0.305 | 0.400 | 0.400 | 393.000 | 446.000 | 435.000 | 435.000 | 0.675 | 0.625 | 0.800 | 0.800 | 0.000 | 0.000 | 0.175 | 28.000 |
| Paraguay | 0.215 | 0.240 | 0.160 | 0.175 | 304.000 | 236.000 | 340.000 | 342.000 | 0.300 | 0.260 | 0.250 | 0.275 | 0.025 | 10.000 | 0.015 | 5.769 |
| Middle East | | | | | | | | | | | | | | | | |
| Turkey | 0.700 | 0.600 | 0.700 | 0.700 | 1,291.0 | 1,288.0 | 1,244.0 | 1,244.0 | 4.150 | 3.550 | 4.000 | 4.000 | 0.000 | 0.000 | 0.450 | 12.676 |
| Syria | 0.234 | 0.225 | 0.212 | 0.212 | 1,303.0 | 1,452.0 | 1,078.0 | 1,078.0 | 1.400 | 1.500 | 1.050 | 1.050 | 0.000 | 0.000 | -0.450 | -30.000 |
| Iran | 0.167 | 0.165 | 0.106 | 0.106 | 802.000 | 699.000 | 760.000 | 760.000 | 0.615 | 0.530 | 0.370 | 0.370 | 0.000 | 0.000 | -0.160 | -30.189 |
| Australia | 0.314 | 0.336 | 0.155 | 0.145 | 2,080.0 | 1,814.0 | 1,826.0 | 1,802.0 | 3.000 | 2.800 | 1.300 | 1.200 | -0.100 | -7.692 | -1.600 | -57.143 |
| European Union | | | | | | | | | | | | | | | | |
| Spain | 0.089 | 0.086 | 0.060 | 0.060 | 1,235.0 | 1,291.0 | 671.000 | 744.000 | 0.505 | 0.510 | 0.185 | 0.205 | 0.020 | 10.811 | -0.305 | -59.804 |
| Greece | 0.375 | 0.355 | 0.300 | 0.300 | 1,045.0 | 1,211.0 | 1,016.0 | 1,016.0 | 1.800 | 1.975 | 1.400 | 1.400 | 0.000 | 0.000 | -0.575 | -29.114 |
| Egypt | 0.307 | 0.273 | 0.240 | 0.240 | 911.000 | 738.000 | 862.000 | 862.000 | 1.285 | 0.925 | 0.950 | 0.950 | 0.000 | 0.000 | 0.025 | 2.703 |
| Mexico | 0.105 | 0.126 | 0.126 | 0.115 | 1,296.0 | 1,097.0 | 1,097.0 | 1,136.0 | 0.625 | 0.635 | 0.635 | 0.600 | -0.035 | -5.512 | -0.035 | -5.512 |
| Others | 3.318 | 3.023 | 2.774 | 2.711 | 293.000 | 303.000 | 297.000 | 286.000 | 4.460 | 4.212 | 3.784 | 3.566 | -0.218 | -5.761 | -0.646 | -15.337 |

World and Selected Countries and Regions

2/9/2007 9:33:02 AM

TABLE 18

The table below presents a 25-year record of the differences between the February projection and the final estimate. Using world wheat production as an example, changes between the February projection and the final estimate have averaged 2.3 million tons (0.4 percent) and ranged from -7.3 to 6.8 million tons. The February projection has been below the final 18 times and above the final 7 times.

RELIABILITY OF PRODUCTION PROJECTIONS

| COMMODITY AND REGION | PROJECTION AND FINAL ESTIMATES, 1981/82 - 2005/06 1/ | | | | | |
|-------------------------|--|-----------------------------|------------|---------|--------------------|-------|
| | Difference | | Lowest | Highest | Below | Above |
| | Average | Average | Difference | | Final | Final |
| | Percent | ---Million metric tons--- | | | Number of years 2/ | |
| WHEAT | | | | | | |
| World | 0.4 | 2.3 | -7.3 | 6.8 | 18 | 7 |
| U.S. | 0.1 | 0.1 | -0.2 | 0.1 | 11 | 6 |
| Foreign | 0.5 | 2.3 | -7.3 | 6.8 | 18 | 7 |
| COARSE GRAINS 3/ | | | | | | |
| World | 0.9 | 7.9 | -19.8 | 7.3 | 19 | 6 |
| U.S. | 0.1 | 0.1 | -0.2 | 1.3 | 12 | 6 |
| Foreign | 1.3 | 7.9 | -19.8 | 7.3 | 17 | 7 |
| RICE (Milled) | | | | | | |
| World | 1.3 | 4.4 | -14.0 | 1.9 | 18 | 7 |
| U.S. | 1.1 | 0.1 | -0.3 | 0.2 | 10 | 4 |
| Foreign | 1.3 | 4.3 | -14.0 | 1.8 | 18 | 7 |
| SOYBEANS | | | | | | |
| World | 2.1 | 3.1 | -4.8 | 15.3 | 16 | 9 |
| U.S. | 0.9 | 0.6 | -1.6 | 1.8 | 10 | 11 |
| Foreign | 3.7 | 3.0 | -5.2 | 14.8 | 18 | 7 |
| | | ---Million 480-lb. bales--- | | | | |
| COTTON | | | | | | |
| World | 1.7 | 1.5 | -5.4 | 2.8 | 19 | 6 |
| U.S. | 0.6 | 0.1 | -0.2 | 0.3 | 10 | 14 |
| Foreign | 2.1 | 1.5 | -5.7 | 2.7 | 19 | 6 |
| UNITED STATES | | -----Million bushels----- | | | | |
| CORN | 0.0 | 2 | -8 | 38 | 2 | 1 |
| SORGHUM | 0.0 | 0 | 0 | 4 | 0 | 2 |
| BARLEY | 0.3 | 1 | -3 | 11 | 11 | 4 |
| OATS | 0.1 | 0 | -2 | 1 | 4 | 3 |

1/ The final estimate for 1981/82-2004/05 is defined as the first December estimate following the marketing year.

2/ May not total 25 if projection was the same as the final.

3/ Includes corn, sorghum, barley, oats, rye, millet, and mixed grain.