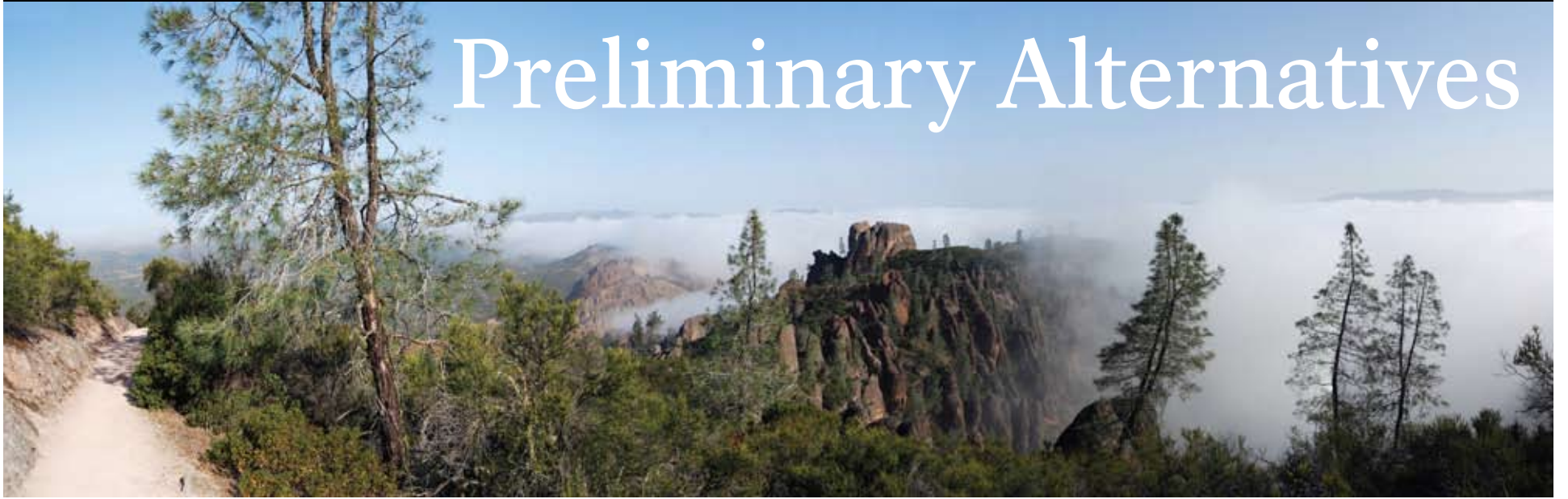




Preliminary Alternatives



Newsletter 3, August 2008

Letter from the Superintendent

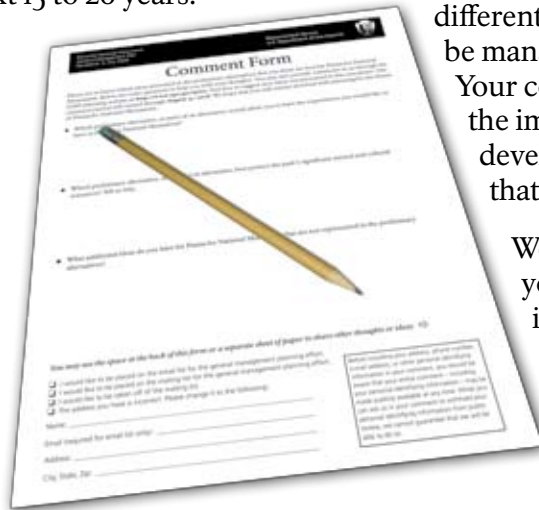
Dear Friends:

We are continuing to work on the development of a new general management plan (GMP) for Pinnacles National Monument, which will determine the park's management direction for the next 15 to 20 years.

This newsletter presents four preliminary alternatives for managing Pinnacles. Each alternative has a different approach to cultural and natural resource management, facilities, and visitor opportunities. The planning team developed these alternatives based on Pinnacles' purpose and significance, issues that need to be addressed, legal mandates, and comments that you provided during the scoping period.

The preliminary alternatives include different approaches to access and visitor services at the ranchlands; infrastructure and opportunities on the park's west side; locations of visitor contact facilities and park administrative functions; new trails and recreational activities; education, research, recreation and wilderness values; natural and cultural resource protection; partnerships with neighboring communities, agencies and tribes; and other topics.

Please tell us what you think about the preliminary alternatives presented in this newsletter. Do you like one particular alternative more than the others? Do you like various elements of each of the alternatives? Do you have an entirely different vision of how Pinnacles should be managed? We'd like to hear from you. Your comments will help us understand the impacts of these proposals and develop a long range plan for Pinnacles that reflects your perspectives.



We have included a mail-in form for your comments. You may also send in comments over the internet at: <http://www.nps.gov/pinn/parkmgmt/planning.htm> or join us at a public meeting this summer to discuss and comment on these alternatives.

I sincerely value your input regarding the future management of Pinnacles National Monument, and thank you in advance for your participation. Please feel free to contact us if you have any questions.

Sincerely,

Eric J. Brunnemann
Superintendent

You're invited

Pinnacles will be hosting public meetings in the surrounding communities in late August. You will have an opportunity to provide your input on the preliminary alternatives presented in this newsletter and to share any additional ideas or comments with the planning team.

Public Meetings Schedule

- | | |
|-----------------|--|
| Venue: | Jefferson School |
| Date: | Monday, August 25 |
| Time: | 7:00 PM |
| Address: | 221 Old Hernandez Road
Paicines, CA |
| Venue: | San Benito County Library |
| Date: | Tuesday, August 26 |
| Time: | 4:30 PM |
| Address: | 470 Fifth Street
Hollister, CA |
| Venue: | Soledad High School |
| Date: | Wednesday, August 27 |
| Time: | 6:00 PM |
| Address: | 425 Gabilan Drive
Soledad, CA |



What's Inside...

Development of Preliminary Alternatives, p. 2

The GMP planning team developed four preliminary alternatives for managing Pinnacles.

How to Participate

How to comment on the alternatives.

Management Zoning, p. 3 Preliminary Alternatives pp. 4-7

Draft concept highlights and management zoning maps.

Summary of Preliminary Alternatives, pp. 8-9

Comparison of the four alternatives.

Park Sites, p. 10

Comparison of how park sites would be addressed in each alternative.

Park News, p. 11

Get caught up on what's happening at Pinnacles.

Pinnacles National Monument Purpose Statement:

The purpose of Pinnacles National Monument is to protect the volcanic Pinnacle Rocks formation, talus caves, associated lands and ecosystems for their scientific, educational and cultural values, by caring for their natural processes and wild character and providing opportunities for public enjoyment and understanding of these resources.

Pinnacles National Monument is nationally significant because:

- Pinnacles National Monument contains a remnant of an ancient stratovolcano that was split by the movement of two continental plates and provided key evidence for the theory of plate tectonics.
- Pinnacles National Monument contains the most extensive assemblage of rare talus caves within the National Park System, and cares for the natural processes and ecosystems within.
- Pinnacles Wilderness protects the natural character of central California's native ecosystems and provides opportunities to experience wildness in an area of expanding urban development.
- Intact ecological processes and communities of Pinnacles National Monument, including oak savanna, riparian and chaparral ecosystems, provide a refuge for the exceptionally diverse native flora and fauna within the Gabilan ecoregion.

Other Important Resources and Values

- The Native American archeological resources of Pinnacles National Monument are preserved within their ecological context, and provide opportunities to study and continue traditional practices and resource management.
- Pinnacles National Monument still reflects the historically significant dry land, subsistence agriculture practiced by homesteaders from the early period of American settlement in California.
- The development and character of Pinnacles National Monument were strongly influenced by the grassroots efforts that established the national monument, and by the work of federal unemployment relief programs including the Civilian Conservation Corps.



CCC Trailbuilding, 1934

Development of Preliminary Alternatives

The preliminary alternatives presented in this newsletter were developed to explore different options for the future. During winter 2007 and spring 2008, the GMP planning team developed four preliminary management options for managing the monument. These options represent different approaches to address specific issues identified by park staff, park visitors and other interested parties.

The General Management Plan process requires the NPS to examine a variety of approaches for managing Pinnacles National Monument. This allows managers, park visitors, partners and interested community members to explore different management options, evaluate the advantages and disadvantages of each.

All of the preliminary alternatives must be consistent with the purposes for which the monument was established (see park purpose and significance). The preliminary alternatives must be reasonable, and must be consistent with other special mandates and laws (e.g. the Endangered Species Act or the National Historic Preservation Act).

While you read the management options, keep in mind that these are just initial ideas. At this stage there may be some gaps and inconsistencies and some ideas might not be fully developed. With your input, the planning team will continue to



Planning team members at alternatives development workshop.

refine these concepts. Unless otherwise stated, all existing uses and visitor and administrative facilities would continue in the monument under all of the concepts.

Also keep in mind that these options are conceptual in nature. The general management plan establishes a vision of the future that will guide year-to-year management of the monument; full implementation could take many years.

We would like to hear from you! Tell us what you think:

As you read through this newsletter think about what alternatives or parts of the alternatives you like best. We'd like to hear from you. Your written comments on this newsletter are welcomed and encouraged. Comments can be submitted electronically or by mail as listed below. Please consider the questions listed on the enclosed comment form in addition to any other thoughts and ideas. Receiving your input before October 31, 2008 will allow us to learn from you before we continue forward with the planning for the general management plan.

In addition to written comments, you can provide your comments on the preliminary alternatives during the upcoming workshops. At these workshops, you will be able to talk with the planning team firsthand about your ideas, comments and questions. The schedule is listed on page 1.

- **Web Site:** Complete the electronic version of the comment form on the web at: Fill out an electronic comment form at <http://www.nps.gov/pinn/parkmgmt/planning.htm>
- **Fill out the enclosed comment form and mail it to the General Management Plan Team, Pinnacles National Monument, 5000 Highway 146, Paicines, CA 95043**
- **Email:** Submit letters and comment via email to: pinn_gmp@nps.gov.
- **Sign up for the E-Newsletter:** Please sign up for the e-newsletter at: <http://www.nps.gov/pinn/parkmgmt/planning.htm>. We will be sending additional information (including newsletters) via e-mail.

Please send your comments by October 31, 2008.



East Side Entrance, 1936

Management Zoning

One of the tools used in park planning is management zoning. Management zones are used to define the desired conditions for different areas of the park. Management objectives differ from zone to zone, and vary according to the resources and conditions that exist within Pinnacles and the types of visitor experiences that are desired in each area. The planning team

has developed five management zones that could be appropriate at Pinnacles. Each zone specifies a particular combination of resource conditions, visitor experiences, and types of development, as described below. Alternatives have been developed by arranging these zones in different configurations, as shown on the maps on pages 4-7.



Management Zones					
Zones	Backcountry Zones		Frontcountry Zones	Special Zones	
	Primitive	Semi-Primitive	Frontcountry	Cultural Interpretation	Special Resource Management
Zone Concept	This zone is managed primarily for wilderness values such as intact ecological communities, solitude, primitive setting, and natural quiet.	This zone represents a transition between the developed and pristine areas. This zone can accommodate periodic high visitor use with limited improvements, as necessary, in a natural setting.	This zone is managed for visitor access, education, recreation, and orientation as well as park operations. Natural and cultural resources are protected, but could be modified to accommodate higher levels of visitor use.	This zone will focus on the interpretation, protection, and preservation of cultural resources reflecting specific time periods. Visitors are provided with opportunities to learn about and experience these time periods.	This zone allows for a range of management actions needed to protect natural and cultural resources and to provide opportunities for undisturbed research. Research and resource protection takes precedence over visitor use.
Natural and Cultural Resources Desired Conditions	Natural resources are in as pristine a condition as possible, and are not subjected to irreversible modifications for recreation, research, or administrative use. Based on the type and significance of a cultural resource, and impact on wilderness values, management decisions would be made to stabilize, remove, or allow the resource to deteriorate naturally.	Natural resources are protected, but could be modified in appropriate locations for visitor access, recreation, and visitor services in ways that harmonize with the natural environment. Based on the type and significance of a cultural resource, and impact on the semi-primitive experience, management decisions would be made to stabilize, rehabilitate, restore, reuse, remove, or allow the resource to deteriorate naturally.	Natural resources are protected, but could be highly modified in appropriate locations for visitor access, services, recreation, and park operations or residential use in ways that harmonize with park settings. Based on the type and significance of a cultural resource, and purpose of the zoned area, management decisions would be made to stabilize, rehabilitate, restore, reuse, remove, or allow the resource to deteriorate naturally.	Natural resources are protected, but could be modified in appropriate locations to support important cultural landscape features in ways that harmonize with the natural environment. Cultural resources are protected to emphasize their significance based on the level of historical documentation available.	Natural resources are protected, but could be modified and manipulated in appropriate locations for research and resource protection purposes in ways that harmonize with the natural environment. Based on the type and significance of a cultural resource, and purpose of the zoned area, management decisions would be made to stabilize, rehabilitate, restore, reuse, remove, or allow the resource to deteriorate naturally.
Wilderness Desired Conditions	Areas within this zone are treated as wilderness regardless of wilderness designation.	This zone is compatible with wilderness. Designated wilderness areas are subject to additional restrictions.	Not Applicable	Not Applicable	This zone is compatible with wilderness. Designated wilderness areas are subject to additional restrictions.
Visitor Experience Desired Conditions	Overall Visitor Experience: Visitor experience is primarily self-guided. Visitors are often immersed in a primitive and wild environment and experience solitude, natural sounds, smells, a sense of remoteness, self-reliance and discovery. Activities: Recreation opportunities could include hiking, climbing, and backcountry camping so long as wilderness values are not degraded. Backcountry camping uses are limited to areas, if any, designed and designated specifically for that use.	Overall Visitor Experience: Visitors have opportunities for solitude, discovery and exploration in a relatively natural environment with some interpretation. Activities: Recreational opportunities could include hiking, climbing, horse use, backcountry camping and biking. Horse and biking uses and backcountry camping, are limited to those trails and facilities, if any, designed and designated specifically for that use at the ranchlands.	Overall Visitor Experience: This zone provides capacity for a large number of visitors and serves as an access/entry point to park experiences. Activities: Recreational opportunities could include hiking, climbing, equestrian use, developed camping, and biking. Equestrian and camping uses are limited to those trails and facilities, if any, designed and designated specifically for that use.	Overall Visitor Experience: Visitors are immersed in a cultural setting. They will experience sights, sounds, and activities that are evocative of the site's period of significance. Activities: Recreational opportunities could include hiking and equestrian use so long as cultural resources are not degraded. Equestrian uses are limited to those trails and facilities, if any, designed and designated specifically for that use.	Overall Visitor Experience: Visitor use/access may be controlled as needed. Activities: Activities, such as guided interpretive tours and walks, could be allowed if not disruptive to research or protection activities.
Types of Facilities	Natural surface trails, unobtrusive directional signs, minimal improvements as required for safety and resource protection, and dispersed primitive camp sites. Roads are not found in this zone.	In designated wilderness: Same as Primitive. Outside of designated wilderness, there may be minimal facilities and other equipment necessary for safety, operations, visitor services, and infrastructure support. These facilities could include water tanks, waysides, paved surface trails, vault toilets, benches, handrails, and dispersed picnic tables. Existing unpaved roads may be maintained for infrequent administrative use.	Facilities could include natural and paved surface trails, roads, visitor centers, developed and primitive campgrounds, fee stations, kiosks, trailheads, picnic areas, wayside exhibits, restrooms, and parking areas.	Facilities could include natural and paved surface trails, pull-outs, wayside exhibits, interpretive trails, trailheads, restrooms, and benches. Existing unpaved roads may be maintained for administrative use.	In designated wilderness: Same as Primitive. Outside of designated wilderness: Facilities could include those that are necessary for research and resource protection activities and limited visitor use facilities such as natural surface trails and waysides.

Preliminary Alternatives

For each preliminary alternative there is a concept statement that generally describes the guiding philosophy or overall direction for each alternative. After the concept statement, there is a description of the management directions and actions that would be taken for each alternative (highlights). A summary table on pages 8-9 provides more details on the alternatives.

Actions Common to the Alternatives

The following list includes a summary of the common management actions that would occur under the alternatives. Some of these actions are common to all four alternatives (Alternatives A, B, C, and D) and others are common to the three action alternatives (Alternatives B, C, and D).

- = indicate actions common to all four alternatives
- ★ = indicate actions common to the three action alternatives

Natural and Cultural Resources

- ★ Natural and cultural resources would be managed in an integrated fashion for protection and restoration, while allowing visitor use wherever it doesn't negatively impact important resources.
- Continue to follow current policies, guidelines, laws, park plans.
- Perpetuate natural processes. Continue removal of exotic species.
- Continue monitoring programs, studies, and inventories.
- Continue programs to understand the effects

- of climate change on park resources. Support, encourage, and conduct scientific research related to climate change. Reduce carbon emissions and increase energy and fuel efficiency. Implement sustainable facility design, whenever possible.
- Cultural resources would be documented and assessed for their significance and managed according to NPS policy.
- ★ Long-term preservation strategies would be developed for significant cultural resources.
- Geologic resources and processes would continue to be protected.
- There may be seasonal closures or managed visitor access to areas such as pinnacle formations, raptor nesting areas, talus caves, McCabe Canyon, and riparian areas to protect sensitive resources.
- ★ The Condor Area would continue to be a restricted area for protection of the California condor; it could be expanded to include additional habitat areas and to provide better separation between the condor facilities and human activity.
- Involve local tribal entities in research and protection of indigenous ethnographic and archeological resources.
- Pinnacles' archival collections will be consolidated at a permanent location.
- ★ Work cooperatively with surrounding landowners, local agencies, tribal entities, and organizations to protect regional resources that extend beyond the monument including protection of watersheds, dark night skies, sensitive habitats, and exotic species management.

Visitor Use

- ★ Recreation and facilities would be dispersed to reduce congestion and to improve visitor experience.
- Continue to provide opportunities for traditional recreation such as hiking, climbing, and picnicking.
- ★ New recreational facilities may include additional trails at various locations.
- A science camp program may be established.

Facilities and Transportation

- Retain the following facilities: Bear Gulch Nature Center, Bear Gulch parking and restrooms, housing on east side, maintenance facilities at Chalone.
- Reconfigure east side campground to protect sensitive riparian areas, improve operations, and improve visitor experience. Retain amphitheater and store.
- ★ Seek to remove non-historic structures from floodplains; restore hydrologic processes as practical.
- Provide shuttle service with shuttle stops at Visitor Center and major sites.
- More trails, including connections between major visitor use areas.

Boundary Adjustments

- No congressional boundary change is needed, but administrative boundary changes would be possible. The park would acquire in-holdings within the boundary or lands adjacent to the boundary if/when they become available from willing sellers.

Alternative A (Continuation of Current Management)

This alternative provides a baseline for evaluating changes and impacts in other alternatives. Under this alternative, the NPS would continue to manage Pinnacles as it is currently managed, following existing management policies and programs.

Highlights:

Remember to read "Actions Common to Alternatives" list above

Natural Resource Management:

- Current natural resource management activities would continue, including raptor monitoring program, re-establishment of the California condor, and removal of exotic species.

Cultural Resource Management:

- Continue to document cultural resources; however, the monument would continue to lack long-term preservation strategies for many cultural resources. Interpretation of cultural resources would remain limited.

Visitor Experience:

- Continue, subject to funding, to provide interpretive services that meet the needs of differing levels of visitor interest and age.
- Limited education programs would continue as funding allows.
- Continue to provide current recreation opportunities, including hiking, viewing scenery and wildflowers, camping, picnicking, and rock climbing.

Facilities and Transportation:

- Existing facilities and trails would remain and continue to be maintained, including minor improvements to visitor facilities.
- Headquarters would remain in Bear Gulch.
- Campground on east side would remain in current location.
- Current roads and shuttle system would remain.

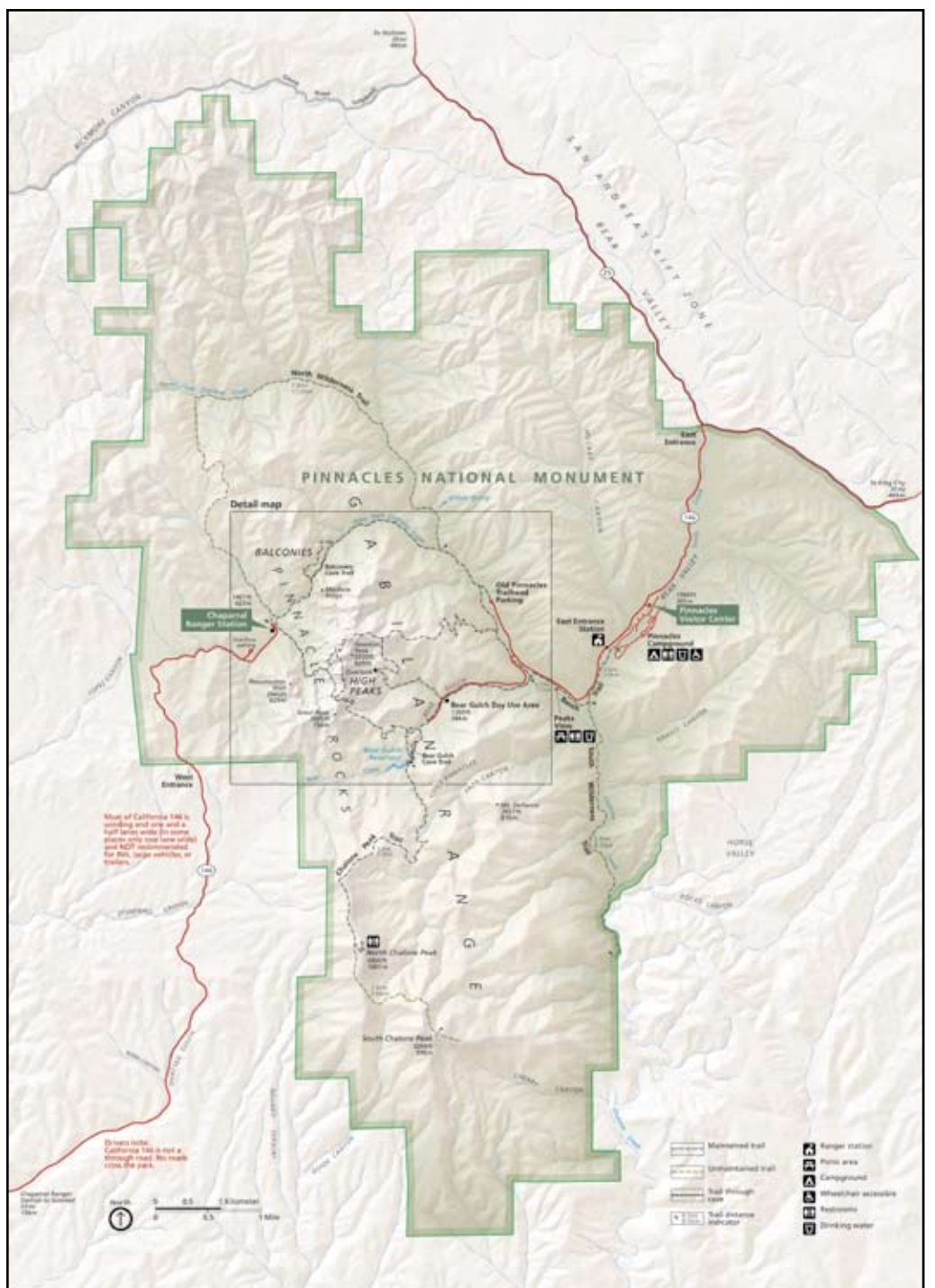
Other:

- Projects currently programmed for funding would occur.
- Maintain the existing wilderness boundary.



Left: West side view of the High Peaks.
Right: Bear Gulch Nature Center.

Current Park Map



Alternative B (Research and Learning)

Pinnacles would be managed as a collection of study areas offering both educational and research opportunities. Pinnacles' cultural and natural resources provide opportunities to learn about the physical and biological processes of the Gabilan Mountains ecoregion and how they shaped and were shaped by human influences over time. Pinnacles would use its proximity to population centers, transportation corridors, and universities, to engage others in research, learning and stewardship.

Highlights:

Remember to read "Actions Common to Alternatives" list on p. 4

Natural Resource Management:

- Natural resources would be protected to a high degree with an emphasis on education and research.

Cultural Resource Management:

- Protect and interpret locally significant cultural resources to connect to the broader history of the region.

Visitor Experience:

- Engage visitors in research, learning, and stewardship opportunities through new research, citizen science, and education programs and facilities. Focus on science and history education.
- New interpretation and education facilities would be constructed. A science camp program may be established.

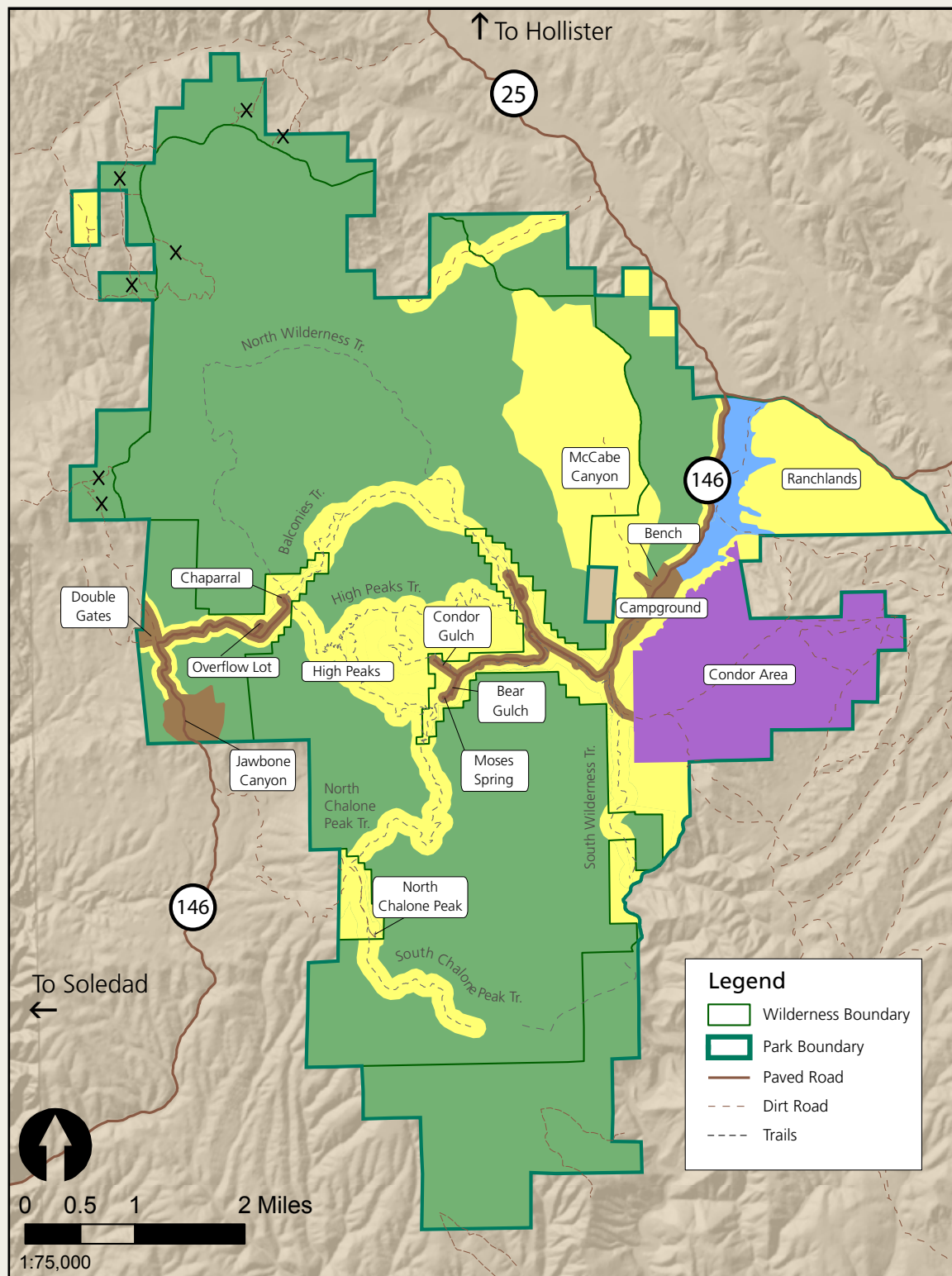
Facilities and Transportation:

- Emphasis of facilities would be on research, education, and interpretation of significant resources.
- Provide some small-scale visitor amenities at shuttle stops.



Above: Educational program at Bear Gulch Reservoir
Below: Chaparral picnic area

Management Zones



Site-Specific Information

Bear Gulch/Condor Gulch: Administrative functions would be moved out of Bear Gulch and a new headquarters building would be built near the campground (see below).

The historic Bear Gulch/Condor Gulch structures would be used to tell the CCC history of the area and interpret rustic architecture. Historic structures would be adaptively reused as offices for researchers and classrooms for students and other visitors.

Roads and parking would be removed at Moses Spring to restore resources.

East side visitor center would be located in the campground area.

Campground on the east side would be reconfigured to protect sensitive riparian areas, improve operations, and improve visitor experience. An amphitheater would be retained. The swimming pool and a campground store would be retained.

A day use area would be created at the periphery of the campground, including the main visitor center and parking area.

A **new headquarters building** would be constructed near the campground, Chamise, or Peak's View area to accommodate all staff in order to improve efficiency and cost-effective management.

High Peaks: Current visitor activities would be allowed and higher use levels would be accommodated while maintaining wilderness values.

The Ranchlands would be managed for cultural landscape values to reflect the historic homesteading period. Visitors would have opportunities to become immersed in historic settings. Uses compatible with historic uses, such as horseback riding, would be allowed.

McCabe Canyon Watershed would be managed for a high level of resource protection and research opportunities. Research and long-term monitoring on the watershed's cultural and natural resources and processes would be conducted. Park staff could work with local tribal entities to reintroduce traditional resource management practices in cooperation with other management techniques. Interpretation, education, and visitor access would be provided where such use does not detract from the research focus.

North Chalone Peak and fire tower would be available for limited overnight use.

West side: a small nature center would be developed possibly at the overlook (overflow parking) area, along with minimum housing, and a small walk-in campground, possibly at Jawbone Canyon or the Double Gates area.

Road section to Chaparral would become service road to restore resources and archeological and historical settings.

Primitive	Semi-Primitive	Frontcountry	Cultural Interpretation	Special Resource Management
Managed for wilderness values: ecological communities, solitude, primitive setting, and natural quiet.	Transition between the developed and pristine areas; can accommodate periodic high visitor use in a natural setting.	Managed for visitor access, education, recreation, and orientation as well as park operations.	Interpretation, protection, and preservation of cultural resources reflecting specific time periods.	Allows for a range of management actions to protect resources and to provide undisturbed research.

Alternative C (Backcountry Experience)

Pinnacles would provide visitors with a range of high quality backcountry experiences, including solitude, quiet, and views of natural settings. Resources would be managed in an integrated fashion for maximum protection, restoration, and maintenance of natural resource processes, backcountry experiences, and cultural resource values in the park, in cooperation with the surrounding landowners.

Highlights:

Remember to read "Actions Common to Alternatives" list on p. 4

Natural Resource Management:

- Natural resources would be protected to a high degree with an emphasis on conserving and restoring natural functions, watershed values, and sensitive wildlife areas which would enhance the visitor experience.
- There would be a greater degree of restoration and removal of development in sensitive areas when possible.

Cultural Resource Management:

- Protect significant cultural resources, but overall, natural resource processes predominate.

Visitor Experience:

- Protect wilderness values. Provide visitors with a range of high quality backcountry experiences, including opportunities for solitude and natural settings.

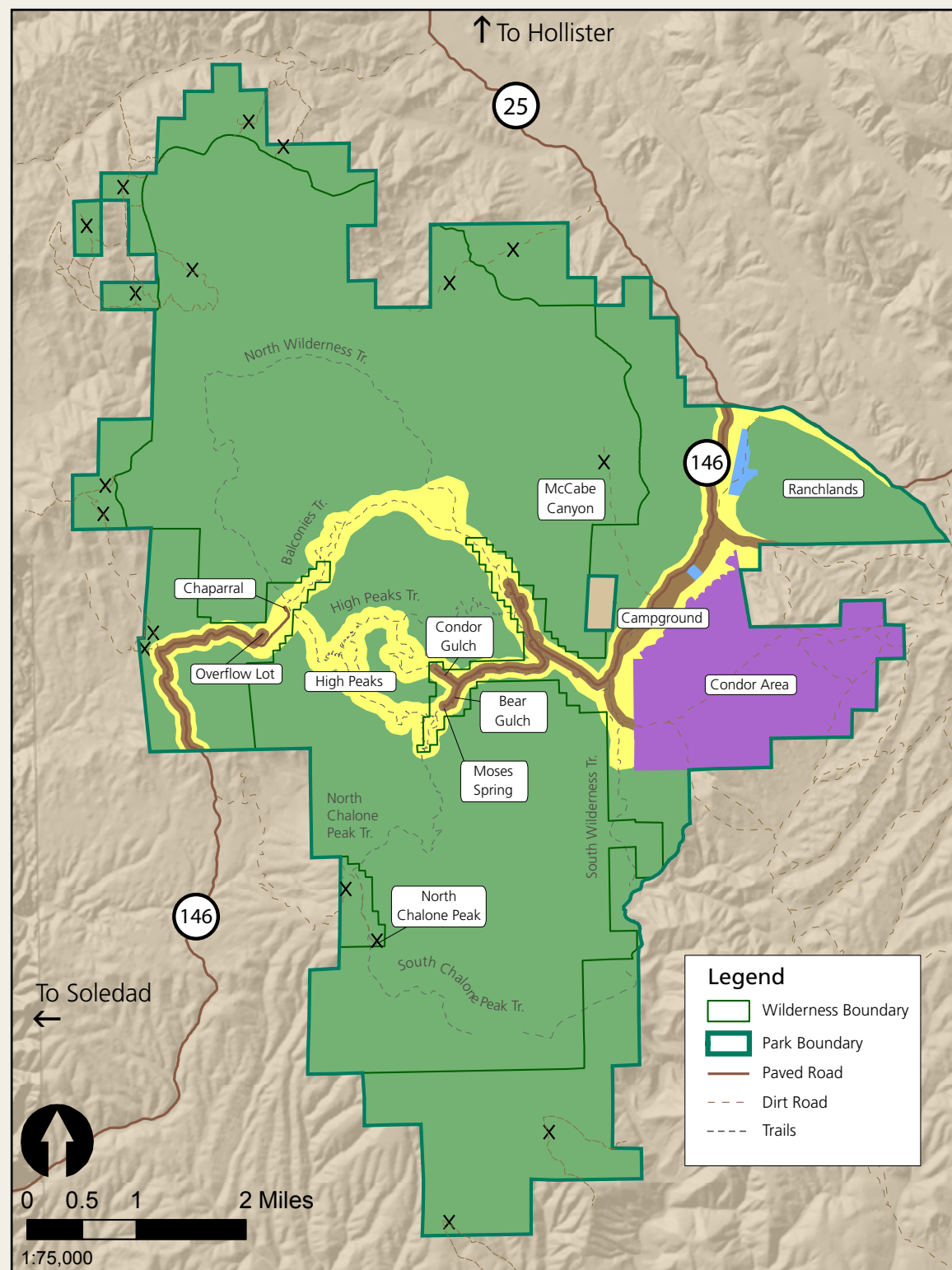
Facilities and Transportation

- Facilities would be minimized and located either in existing built areas or on the periphery of the park to protect the wilderness values of the remainder of the park. New facilities would include a smaller scale visitor center at the campground area. Unnecessary facilities would be removed, particularly from flood zones, and natural processes restored.
- Reduce visual impact of shuttle stops.



High Peaks Trail.

Management Zones



Site-Specific Information

Bear Gulch/Condor Gulch: Headquarters would remain in Bear Gulch. Some functions could be moved out of Bear Gulch to other facilities such as the historic Bacon Guest House.

Roads and parking would be removed at Moses Spring to restore resources.

A small east side visitor center would be located in the campground area.

Campground on the east side The campground on the east side would be reconfigured to protect sensitive riparian areas. An amphitheater would be retained. The swimming pool would be removed when no longer cost-effective to maintain.

A day use area would be created at the periphery of the campground, including a small visitor center and parking area.

High Peaks: Visitor activities would be dispersed and actively managed to provide ample opportunities for solitude.

The Ranchlands would offer a variety of visitor opportunities ranging from camping, interpretation of natural and cultural resources, and a quality wilderness experience. Protection of the cultural landscape would be focused on the Bacon and Butterfield sites.

McCabe Canyon Watershed would be managed for a high level of resource protection and a wilderness experience. Research and long-term monitoring on the watershed's cultural and natural resources and processes would be conducted. Park staff could work with local tribal entities to reintroduce traditional resource management practices in cooperation with other management techniques. Visitors would experience solitude and unobtrusive interpretation and education programs informed by local tribal involvement.

North Chalone Peak and fire tower would be removed.

West side: The west side would function as a day-use area. Many current structures would be removed, including the visitor contact station, housing, and maintenance building. A smaller maintenance shed would be built. Parking would be reduced.

A small visitor contact station would be operated in Soledad.

Primitive	Semi-Primitive	Frontcountry	Cultural Interpretation	Special Resource Management
Managed for wilderness values: ecological communities, solitude, primitive setting, and natural quiet.	Transition between the developed and pristine areas; can accommodate periodic high visitor use in a natural setting.	Managed for visitor access, education, recreation, and orientation as well as park operations.	Interpretation, protection, and preservation of cultural resources reflecting specific time periods.	Allows for a range of management actions to protect resources and to provide undisturbed research.

Alternative D (Expanded Visitor Experience)

Pinnacles would provide an expanded array of visitor opportunities, including recreation, interpretation, and education, consistent with the NPS mission and regional needs. Opportunities would be provided on the new lands and other underused areas. Diverse types of users and groups would be encouraged.

Highlights:

Remember to read "Actions Common to Alternatives" list on p. 4

Natural Resource Management:

- Natural resources would be protected to provide visitors with a natural setting. Resource integrity is important to the visitor experience.

Cultural Resource Management:

- Manage cultural resources in order to provide visitors with opportunities to experience the broader history of the region. Provide active interpretation of significant cultural resources.

Visitor Experience:

- Reach out to a broad audience by offering a wider range of recreational opportunities and learning experiences.
- Provide opportunities for visitor involvement in science and stewardship projects.
- New interpretation and education facilities may include west side and east side visitor centers near the park entrances. A science camp program may be established.
- New / additional recreational opportunities may include group events, camping (backcountry, walk-in), picnicking, biking opportunities, and horse use, compatible with the historic setting, on designated trails on the ranchlands.

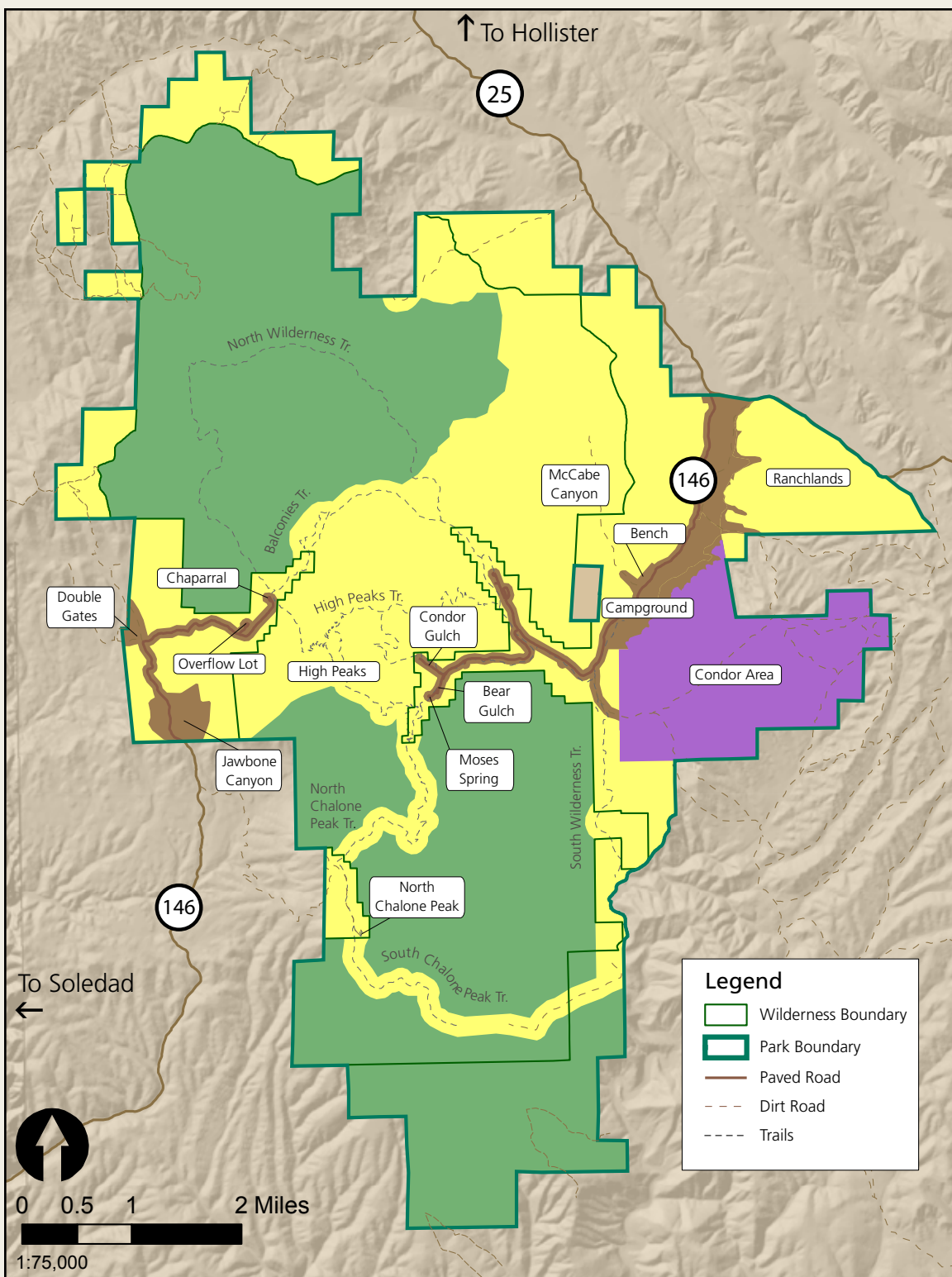
Facilities and Transportation

- Facilities would be focused on supporting an expanded array of visitor opportunities.
- High use and group facilities such as picnic areas and/or a shaded pavilion for group events would be located on the ranchlands and near west side boundary.
- Provide visitor amenities (shade, visitor information, water, restrooms) at shuttle stops.



Above: School group in Bear Gulch.
Below: Rock climbing.

Management Zones



Site-Specific Information

Bear Gulch/Condor Gulch: Headquarters would remain in Bear Gulch, but some functions could be moved to other facilities such as the Bacon House. Provide additional opportunities to experience cultural landscape.

A new east side visitor center would be built closer to Hwy 25 to provide visitor contact closer to the park entrance.

Campground on the east side would be reconfigured to protect sensitive riparian areas, improve operations, and broaden the range of camping experiences. Replacement camp sites or overflow camping areas within the campground and other areas would be added. An amphitheater and the swimming pool would be retained.

High Peaks: Current visitor activities would be allowed and higher use levels would be accommodated while maintaining wilderness values.

The Ranchlands would be managed for visitor opportunities in keeping with the cultural landscape. Homesteading would be interpreted. Facilities for group use and trails designed for varying physical abilities and recreation interests would be provided. An equestrian concession and trail system could provide new visitor opportunities associated with a historic use. A group event area may be developed.

McCabe Canyon Watershed would be managed to promote park and visitor understanding of its natural and cultural resources through research and education. Park staff could work with local tribal entities to reintroduce traditional resource management practices in cooperation with other management techniques. Interpretation and education, informed by local tribal involvement, could be provided and may include waysides and trails.

Overnight use of **North Chalone Peak** would be allowed.

West side: the planned development at the west boundary would occur, providing a visitor center, dorm, housing and maintenance facilities, along with new trail connections. A small walk-in campground would be developed, possibly at Jawbone Canyon or the Double Gates area.

Primitive	Semi-Primitive	Frontcountry	Cultural Interpretation	Special Resource Management
Managed for wilderness values: ecological communities, solitude, primitive setting, and natural quiet.	Transition between the developed and pristine areas; can accommodate periodic high visitor use in a natural setting.	Managed for visitor access, education, recreation, and orientation as well as park operations.	Interpretation, protection, and preservation of cultural resources reflecting specific time periods.	Allows for a range of management actions to protect resources and to provide undisturbed research.

Summary of Preliminary Alternatives

This table represents the range ideas explored for the preliminary alternatives.



For Actions Common to All:






■ = actions common to all four alternatives (A-D)

★ = actions common to the three action alternatives (B, C, D)

	Alternative A: Current Management	Alternative B: Research and Learning	Alternative C: Backcountry Experience	Alternative D: Expanded Visitor Experience
Alternative Description	<i>Continue to manage Pinnacles National Monument as it has been currently managed following existing management policies and programs. Projects currently programmed for funding would occur.</i>	<i>Pinnacles would be managed as a collection of study areas offering both educational and research opportunities. Pinnacles would use its proximity to population centers, transportation corridors, and universities, to engage others in research, learning and stewardship.</i>	<i>Pinnacles would provide visitors with high quality backcountry experiences. Resources would be managed in an integrated fashion for protection, restoration, and maintenance of natural and cultural resources and backcountry experiences in cooperation with the surrounding landowners.</i>	<i>Pinnacles would provide an expanded array of visitor opportunities, including recreation, interpretation, and education, consistent with the NPS mission and regional needs. Opportunities would be provided on the new lands and other underused areas.</i>
Natural Resources				
Common to All	<ul style="list-style-type: none"> ★ Natural and cultural resources would be managed in an integrated fashion for protection and restoration, while allowing visitor use wherever it doesn't negatively impact critical resources. ■ Continue to follow applicable policies, guidelines, laws, and park plans. ■ Continue long-term monitoring program, baseline studies, and inventories. ■ Continue programs to understand the effects of climate change on park resources. Support, encourage, and conduct scientific research related to climate change. Reduce carbon emissions and increase energy and fuel efficiency. Implement sustainable facility design, whenever possible. ■ Geologic resources and processes would continue to be protected. ■ Perpetuate natural processes. Continue removal of exotic species. ■ There may be seasonal closures or managed visitor access to areas (e.g. pinnacle formations, raptor nesting areas, talus caves, McCabe Canyon, and riparian areas) to protect sensitive resources. ★ The Condor Area would continue to be a restricted area for research and protection of the California condor; it could be expanded to include additional habitat areas and to provide better separation between the condor facilities and human activity. ★ Work cooperatively with surrounding landowners, local agencies, tribal entities, and organizations to protect regional resources that extend beyond the monument including, protection of watersheds, dark night skies, and sensitive habitats / exotic species management (e.g. cooperative expansion of the pig fence, protection of ethnobotanical resources); establish other conservation agreements. 			
Primary Concept:	Continue natural resource management activities, including raptor monitoring program, re-establishment of the California condor, and removal of exotic species.	Natural resources would be protected to a high degree with an emphasis on education and research.	Natural resources would be protected to a high degree with an emphasis on conserving and restoring natural functions, watershed values, and sensitive wildlife areas which would enhance the visitor backcountry experience.	Natural resources would be protected to provide visitors with a natural setting. Resource integrity is important to the visitor experience. There would be ample opportunities to experience native vegetation communities and to view wildlife.
Restoration	Continue current restoration activities.	Impacted sensitive areas would be actively restored. For example, Moses Spring road and parking would be removed and area would be restored.	Greater degree of restoration and removal of development in sensitive areas. Restore areas including: fire tower at North Chalone Peak, Chaparral (existing developed areas), the bottomlands and riparian areas along Sandy Creek, and the Moses Spring road and parking area.	There may be impacts to resources from additional recreation activities and development, but sensitive areas would be avoided.
Research	Continue current research activities.	Importance of strong science / resource communication program. Bear Gulch facilities would be used for scientists and other researchers to work collaboratively. Work cooperatively with universities to conduct research.	Increase in research opportunities through greater protection of resources.	Research opportunities would be same as Current Management.
Cultural Resources				
Common to All	<ul style="list-style-type: none"> ★ Natural and cultural resources would be managed in an integrated fashion for protection and restoration, while allowing visitor use wherever it doesn't negatively impact important resources. ■ Continue to follow applicable policies, guidelines, laws, and park plans. ■ Continue long-term monitoring program, baseline studies, and inventories. Cultural resources would be documented and assessed for their significance in accordance with existing policy. ★ Long-term preservation strategies would be developed for significant cultural resources (archeological sites, historic buildings, structures and landscapes). Appropriate treatments would be applied for cultural resources, including opportunities for adaptive reuse of historic structures. ■ Visitor access may be managed in certain areas to protect sensitive resources. ■ Cultural landscapes would be protected, consistent with natural resources objectives, park operations needs, and allowing for visitor use. ■ Involve local tribal entities in research and protection of indigenous ethnographic and archeological resources throughout the monument. ★ Work cooperatively with surrounding landowners, local agencies, tribal entities, and organizations to protect regional resources that extend beyond the monument including, protection of watersheds, dark night skies, and sensitive habitats / exotic species management (e.g. cooperative expansion of the pig fence, protection of ethnobotanical resources); establish other conservation agreements. 			
Primary Concept:	Continue to document cultural resources; continue to lack long-term preservation strategies.	Protect and interpret locally significant cultural resources to connect to the broader history of the region.	Protect significant cultural resources, but overall, natural resource processes predominate.	Manage cultural resources to provide visitors with opportunities to experience the broader history of the region.
Cultural Resources Interpretation	Interpretation of cultural resources would remain limited.	Significant cultural resources and cultural landscapes would serve as outdoor classrooms for education, research, and interpretation about different periods in history represented within the park, including homesteading, Native American use, CCC construction of facilities, and mining.	Interpretation of cultural resources would focus on using non-personal media (e.g. brochures, waysides, signs) and other unstructured means, so visitors could explore on their own. Removal of nonhistoric facilities would provide opportunities to better protect and restore cultural resources/landscapes.	Provide active interpretation of significant cultural resources through programs to allow visitors to participate in a range of activities and to be immersed in historic settings.
Wilderness				
Primary Concept:	The park would maintain the existing wilderness boundary. Continue to manage wilderness areas according to the 1999 Resource Management Plan. No backcountry camping.	Nonpersonal media allowed on the fringe of wilderness. Greater focus on park staff/volunteers work in wilderness. Promote sense of solitude / reduce crowding; develop dispersed trails, allow backcountry camping.	Most areas would be zoned primitive to emphasize wilderness values. Promote sense of solitude / reduce crowding; develop dispersed trails; no backcountry camping allowed.	Same as Research and Learning.

	Alternative A: Current Management	Alternative B: Research and Learning	Alternative C: Backcountry Experience	Alternative D: Expanded Visitor Experience
Visitor Experience				
Common to All	<ul style="list-style-type: none"> ★ Recreational opportunities and visitor facilities would be dispersed to reduce congestion and improve the quality of the visitor experience in the core of the monument. ■ Pinnacles will continue to provide opportunities for traditional recreation in the park such as hiking, climbing, and picnicking. ★ New recreational facilities may include additional trails at various locations within the monument. ■ A science camp program may be established where appropriate. 			
Primary Concept:	Visitor service levels would continue. Provide diversity of uses consistent with administrative policies and resource protection.	Engage visitors in research, learning, and stewardship opportunities through new research, citizen science, and education programs and facilities.	Provide visitors with a range of high quality wilderness experiences, including opportunities for solitude and natural settings.	Reach out to a broad audience by offering a wider range of recreational opportunities and learning experiences.
Visitor Information and Interpretation	The park would continue, subject to funding, to provide interpretive services that meet the needs of differing levels of visitor interest and age.	Provide visitor information and interpretation to individuals and groups in specific resource areas.	Provide visitor information and interpretation outside of the park, with informal interpretation (e.g. brochures, waysides, signs) within the park.	Provide visitor information and interpretation to diverse audiences in varied settings throughout the park.
Visitor Education	Limited education programs would continue as funding allows.	Focus on science and history education. Provide multiple outdoor classroom opportunities (e.g. Balconies, other talus caves, chaparral vegetation, Condor Area) to learn about monument resources and the region. Provide opportunities for visitor involvement in science and stewardship projects.	Focus on wilderness values.	Focus on significant resources of the monument and broader regional history. Provide opportunities for visitor involvement in science and stewardship projects.
Interpretation Facilities	Current interpretation facilities would remain	New interpretation and education facilities may include a west side nature center at the overlook, and an east side visitor center at the campground.	New interpretation and education facilities may include a visitor contact station in Soledad and east side visitor center at the campground.	New interpretation and education facilities may include west side and east side visitor centers near the park entrances.
Science Camp	A science camp program may be provided as funding allows.	A permanent science camp program may be established at Bear Valley Hall (if acquired), the campground, or Bear Gulch/Condor Gulch.	A small science camp program may be provided in appropriate locations as needed.	A science camp program may be established at Bear Valley Hall (if acquired), the campground, or the North Chalone Peak fire tower.
Recreation Opportunities	Provide current opportunities, including hiking, climbing, viewing scenery, developed camping, and picnicking. Backcountry camping and horseback riding are not allowed.	Uses compatible with historic uses, such as horseback riding, would be allowed on designated trails on ranch bottomlands. Backcountry camping allowed where such use does not detract from resource or social values.	Recreation use would be dispersed to provide opportunities for solitude. Backcountry camping and horseback riding would not be allowed.	Same as Research and Learning.
Facilities and Transportation				
Common to All	<ul style="list-style-type: none"> ■ Retain Bear Gulch Nature Center, Bear Gulch parking and restrooms. ■ Retain current housing on east side. ■ Retain maintenance facilities at Chalone. ■ Realign east side campground and reduce in size (depending on alternative) to protect sensitive riparian areas, improve operations, and improve visitor experience. Retain amphitheater and store in campground. ★ Seek to remove non-historic structures from floodplains; restore hydrologic processes as practical. ■ Provide shuttle service. Provide shuttle stops at Visitor Center and major sites. 			
Primary Concept:	Existing facilities and trails would remain and continue to be maintained, including minor improvements to visitor facilities.	Emphasis of facilities would be on research, education, and interpretation of regionally significant resources. There would be improvement or construction of new facilities in this concept including: new headquarters on the east side and new nature center on the west side.	Minimum footprint, restore sensitive areas, remove facilities in floodplain areas. A smaller scale visitor center would be located at the campground area. The visitor contact station on the west side would be removed and the area would be restored. A visitor contact station would be located in Soledad.	Facilities would be focused on supporting an expanded array of visitor opportunities. Visitor use opportunities would be provided at the ranchlands and trails would be developed in other parts of the monument. New facilities include new visitor centers closer to Hwy 25 and at West boundary.
East Side Visitor Center	East side visitor center would continue to be located in the campground store.	East side visitor center would be located in the campground area.	A small east side visitor center would be located in the campground area.	A new east side visitor center would be built closer to Hwy 25 to provide visitor contact near the park entrance.
Headquarters and Bear Gulch	Headquarters would remain in Bear Gulch.	A new headquarters building would be built near the campground to accommodate all staff and to improve efficiency and management. The historic Bear Gulch structures would be adaptively reused as offices for researchers and classrooms for visitors.	Headquarters would remain in Bear Gulch. Some functions could be moved out of Bear Gulch to other facilities such as the Bacon House.	Headquarters would remain in Bear Gulch, but some functions could be moved out of Bear Gulch to other facilities such as the Bacon House.
Campground	East side campground and existing amenities (store, swimming pool, amphitheater) would remain in current location. Similar scale as current.	East side campground would be reconfigured. Swimming pool would be retained.	East side campground would be reconfigured. The swimming pool would be removed when no longer cost-effective to maintain.	Add replacement camp sites within the campground and other areas. An amphitheater and the swimming pool would be retained.
Picnic / Group Facilities	Current picnic and group facilities would remain. Minor improvements could be made.	Additional picnic areas would be developed, including a small group picnic area.	Additional small picnic areas would be developed.	High use and group facilities such as picnic areas and/or a shaded pavilion for group events would be located on the perimeter of the monument while retaining a quieter experience in the core.
Roads & Parking Changes	Roads and parking would remain.	Roads and parking to be removed at Moses Spring and road section to Chaparral would become service road to restore resources.	Roads and parking to be removed at Moses Spring, Chaparral, and North Chalone Peak to restore resources.	Additional trailheads on the perimeter of the park (Northern trailhead and along 25 at the ranchlands) would be created to provide low-density experiences.
North Chalone Peak	North Chalone Peak fire tower would remain.	Limited overnight use North Chalone Peak and fire tower would be allowed.	Fire tower at North Chalone Peak would be removed.	Overnight use of North Chalone Peak would be allowed.
Transportation / Shuttle	Current shuttle service would remain.	Provide some small-scale visitor amenities at shuttle stops.	Reduce visual impact of shuttle stops. Limited amenities	Provide visitor amenities (shade, visitor information, water, restrooms) at shuttle stops.
West Side	Current facilities (visitor contact station, restrooms, waysides, picnic area, trails, roads and parking, and 1 housing unit) and services provided would remain. West side would remain a day use area and would retain similar quiet character.	Develop small-scale nature center at a location to take advantage of existing infrastructure, such as the overlook/overflow parking area. Build limited housing. Develop small walk-in campground, possibly at Jawbone Canyon or Double Gates area.	West side would remain a day-use area. Remove structures, including visitor contact station, housing, and maintenance building. Build smaller maintenance shed. Reduce parking. A small visitor contact station would be operated in Soledad.	West boundary planned development would occur, providing a visitor contact station, dorm, housing and maintenance facility. Develop small walk-in campground, possibly at Jawbone Canyon or the Double Gates area.

Alternatives – Park Sites

	Alternative B: Research and Learning	Alternative C: Backcountry Experience	Alternative D: Expanded Visitor Experience
Bear Gulch/Condor Gulch 	<ul style="list-style-type: none"> Administrative functions would be moved out and a new headquarters building would be built near the campground (see below). Historic structures would be used as offices for researchers and classrooms for students and other visitors. The historic structures, cultural landscape, and nearby trails would be managed to reflect CCC and other depression-era programs history and rustic architecture. Moses Spring parking area would be removed; spring and wetlands restored. 	<ul style="list-style-type: none"> Headquarters would remain in Bear Gulch. Some functions could be moved out of Bear Gulch to other facilities such as the historic Bacon Guest House. Moses Spring parking area would be removed; spring and wetlands restored. Management of the cultural landscape is the same as Current Management. 	<ul style="list-style-type: none"> Headquarters would remain in Bear Gulch, but some functions could be moved to other facilities such as the Bacon House. Provide additional opportunities to experience the cultural landscape.
Campground (East Side) 	<ul style="list-style-type: none"> The campground would be realigned to protect sensitive riparian areas, improve operations, and improve visitor experience. An amphitheater, campground store, and the swimming pool would be retained. A day use area would be created at the periphery of the campground, including the main visitor center and parking area. A new headquarters building would be constructed near the campground, Chamise, or Peak's View area. 	<ul style="list-style-type: none"> The campground would be realigned to protect sensitive riparian areas. An amphitheater would be retained. The swimming pool would be removed when no longer cost-effective to maintain. A day use area would be created at the periphery of the campground, including a small visitor center and parking area. 	<ul style="list-style-type: none"> The campground would be realigned to protect sensitive riparian areas, improve operations, and broaden the range of camping experiences. Adapt to meet changing needs and demands. There would be no net loss in camp sites. Replacement camp sites or overflow camping areas within the campground and other areas would be added. An amphitheater and the swimming pool would be retained.
East Side Visitor Center	<ul style="list-style-type: none"> A visitor center would be located in the campground area. 	<ul style="list-style-type: none"> A small visitor center would be located in the campground area. 	<ul style="list-style-type: none"> A visitor center would be built closer to Hwy 25 to provide visitor contact near the entrance.
High Peaks	<ul style="list-style-type: none"> Current visitor activities would be allowed and higher use levels would be accommodated while maintaining wilderness values. 	<ul style="list-style-type: none"> Visitor activities would be dispersed and actively managed to provide ample opportunities for solitude. 	<ul style="list-style-type: none"> Current visitor activities would be allowed and higher use levels would be accommodated while maintaining wilderness values.
Ranchlands 	<ul style="list-style-type: none"> The Ranchlands would be managed for cultural landscape values to reflect the historic homesteading period. The natural ecosystem, including native plant communities and oak woodland and savanna, would predominate. Visitors would have opportunities to become immersed in the historic settings. Uses compatible with historic uses, such as horseback riding, would be allowed. Backcountry camping would be allowed. 	<ul style="list-style-type: none"> The Ranchlands would offer a variety of visitor opportunities, including interpretation of natural and cultural resources and a quality wilderness experience. Backcountry camping and horseback riding would not be allowed. Protection of the cultural landscape would be focused on the Bacon and Butterfield sites. The natural ecosystem, including native plant communities and oak woodland and savanna, would predominate. 	<ul style="list-style-type: none"> The Ranchlands would be managed for visitor opportunities in keeping with the cultural landscape. The natural ecosystem, including native plant communities and oak woodland and savanna, would predominate. Homesteading would be interpreted. Facilities for group use and trails designed for varying physical abilities and recreation interests would be provided. <ul style="list-style-type: none"> Develop an equestrian trail system and concession to provide new visitor opportunities associated with a historic use. Develop a group event area near park entry. Backcountry camping would be allowed.
McCabe Canyon Watershed 	<ul style="list-style-type: none"> The watershed would be managed as a relatively undisturbed natural and cultural area for research and long-term monitoring. Park staff could work with local tribal entities to reintroduce traditional resource management practices in cooperation with other management techniques. Interpretation, education, and visitor access would be provided where such use does not detract from the research focus. 	<ul style="list-style-type: none"> The watershed would be managed as a relatively undisturbed natural and cultural area for research, monitoring, and for wilderness experiences. Park staff could work with local tribal entities to reintroduce traditional resource management practices in cooperation with other management techniques. Visitors would experience solitude and unobtrusive interpretation and education programs informed by local tribal involvement. 	<ul style="list-style-type: none"> The watershed would be managed to promote understanding of natural and cultural resources and Native American use of the watershed. Park staff could work with local tribal entities to reintroduce traditional resource management practices in cooperation with other management techniques. Interpretation and education, informed by local tribal involvement, could be provided and may include waysides and trails
West Side 	<ul style="list-style-type: none"> The west side would retain a similar quiet character with limited development. Limited, small-scale new facilities would be built, taking advantage of existing infrastructure at Chaparral. A small nature center possibly at the overlook (overflow parking) area, along with minimum housing (2 units). A small walk-in campground could be developed possibly at Jawbone Canyon or the Double Gates area. Informal interpretation (e.g. brochures, waysides, and signs) would be provided. Road section to Chaparral would become service road to restore resources and archeological and historical settings. Archeological and historical resources would be managed to reflect mining, Hispanic period, and homesteading in the region. 	<ul style="list-style-type: none"> The west side would function as a day-use area and it would retain its natural character. Visitors would have ample opportunities to experience solitude and natural quiet. Informal interpretation (e.g. brochures, waysides, and signs) would be provided. Facilities and infrastructure would be reduced, including removal of the visitor contact station, housing, and maintenance building. A smaller maintenance shed would be built. Parking would be reduced and the road to Chaparral would be removed. Staffing needs would be reduced. Natural conditions would be restored. A small visitor contact station would be operated in Soledad. 	<ul style="list-style-type: none"> The planned development at the west boundary would occur, providing a visitor center, housing, maintenance facilities, roads, and parking. New trail connections and picnic areas would be developed. A small walk-in campground would be developed, possibly at Jawbone Canyon or the Double Gates area. Informal interpretation (e.g. brochures, waysides, and signs) would be provided.

Park News



Pinnacles Centennial

Pinnacles celebrates its 100th anniversary this year with a series of programs, exhibits, and special events to commemorate its establishment and those people and families involved in the area's history. Through this process, Pinnacles hopes to engage congressional delegates, local dignitaries, local communities, as well as the general public; and establish partnerships with local communities, area businesses, schools, and members of local organizations.

The community and park visitors have already participated in several events, kicked off by a Rededication Ceremony in January. The Centennial Weekend in March featured history and science programs, brought history to life at the 1830's Mountain Men encampment and Native American demonstrations, and welcomed alumni back to share their stories with visitors. In May, the Homestead Weekend featured demonstrations and programs by descendants of the original Pinnacles homesteaders. Finally, the Rockpile Rendezvous in June commemorated the history of climbing at Pinnacles.

The celebration will continue with the Native American Weekend, featuring storytelling, dances and crafts presented by descendants of the park's original inhabitants. Finally, the park and its local partners will share information on opportunities and services in the park and surrounding communities at the Community Outreach event on October 12, 2008.

Activities will not only focus on the monument's resources and local area, but also on the significance that the establishment of Pinnacles National Monument was, and still is, a grassroots movement.

Centennial Volunteer Cadre (CiVIC)

Celebrating its Centennial Year in 2008, Pinnacles National Monument will be honoring current, past and future park volunteers. This year marks a time for renewed commitment to protect and preserve this place for future generations, just as the early visitors and inhabitants did.

The National Park Service needs your help to succeed. We are looking for local volunteers to assist the park in all realms. Do you enjoy teaching people and answering questions? Do you enjoy the natural beauty of Pinnacles National Monument? Do you want to help protect and preserve the plants and animals of Pinnacles National Monument? Do you want to lend your expertise to help with Pinnacles mission? Learn something new and have fun. Join the volunteer team here at Pinnacles National Monument. We are looking for people to help NPS staff educate and assist visitors throughout the park. We are looking for people to help preserve the natural and cultural resources by assisting resource managers and maintenance staff with various projects including the Condor Recovery Program and Habitat Restoration Program. We are looking for people to assist with special NPS and Pinnacles Partnership events throughout the park.

Whether you have volunteered for Pinnacles National Monument in the past or actively volunteer or are interested in trying something new, now is the time to join the team as a Volunteer in the Parks (VIP) and become part of the Centennial VIP Cadre (CiVIC). Please email pinn_volunteer@nps.gov or call 831-389-4486 x242 if you would like to join the team.

Science camp

Pinnacles National Monument, working with local educators, is developing a sustainable, mobile (tent based) science camp. The science camp will provide opportunities for local students to bring their learning to life in a national park setting while conducting research reflective of park scientists. Students will learn about park resources, collect quantitative and qualitative data, and, to demonstrate thorough understanding, make recommendations to park management based on their findings.

Pinnacles is collaborating with educators in the San Benito County Office of Education, the University of California Santa Cruz, the Monterey Bay Area Math Project, and the Monterey Bay Science Project to design and participate in a three year evaluation of the curriculum and levels of student learning at the camp. Curriculum is based on California State Content Standards, built on park resource projects, and includes students working collaboratively through the scientific method.

Because of the partnerships with local education institutions and organizations, approximately 1000 new students will participate in programming each year. Twenty four students participated in the pilot program in May and the camp will be in full operation next spring.

Restoration of Bottomlands to begin in 2009

The addition of 2,000 acres of the former Pinnacles Ranch in 2006 brings new challenges and opportunities. The new lands are composed of scenic rolling hills of native chaparral and bottomlands of valley oak savannah interspersed with wetlands and an ephemeral creek. Unfortunately, the bottomlands section is in a highly degraded condition. Likely once blanketed with spectacular native wildflowers and bunchgrasses, the highly invasive non-native yellow star-thistle (*Centaurea solstitialis*) and other exotic invasives now dominate the bottomlands.

To address this problem, Pinnacles is initiating a long-term restoration effort to eradicate the worst of these invaders and to bring native plants and animals back to these lands through an active restoration effort that includes invasive plant removal using integrated pest management techniques such as mowing, prescribed burning, targeted grazing, and the limited use of herbicides. For the summer of 2008, we have planned prescribed burns to remove yellow star-thistle as weather and air quality conditions allow.

Additionally, in areas where the native plant seedbank has been depleted, we will establish small revegetation plots using native grasses and wildflowers to determine what methods will work best to restore natural processes and biological diversity on these unique lands. An Environmental Assessment, called "Integrated Tools to Address Degraded Lands," is currently being drafted and will be available for public comment by the end of the summer.



Above: Students track condors.
Below: May 2008 Science Camp students



Above: Ranch bottomlands.
Below: Oak woodland





National Park Service
U.S. Department of the Interior

General Management Plan Team
Pinnacles National Monument
5000 Highway 146
Paicines, CA 95043



EXPERIENCE YOUR AMERICA™

Pinnacles NM General Management Plan Newsletter 3: Preliminary Alternatives

What's Inside:

Enclosed for your review are preliminary alternatives developed for the Pinnacles National Monument General Management.

Contents:

Letter from the Superintendent p. 1
Development of Preliminary Alternatives p. 2
How to Participate p. 2
Management Zones p. 3
Preliminary Alternatives pp. 4-7
Summary of Alternatives p. 8-9
Alternatives: Park Sites, p. 10
Park News, p. 11
Comment Form - insert

Contact Information

Mail:
Pinnacles National Monument GMP
5000 Highway 146
Paicines, CA 95043

Phone:
Carl Brenner, GMP Information:
(831) 389-4486 x 265
Martha Crusius, Project Manager:
(510) 817-1447

Park Web Site:
<http://www.nps.gov/pinn>

E-mail:
pinn_gmp@nps.gov

Future Opportunities for your Participation

	Planning Activity	Dates	Public Involvement Opportunities
1	Scoping - Set the stage for planning: Reaffirm purpose, significance, and identify ideas, concerns or issues to be addressed in the GMP. Summarize scoping comments and report back.	Spring to Summer 2007 Winter 2008	Review newsletter and send us your ideas or concerns on the comment form provided or through our planning website. Attend public meetings and voice your ideas and concerns.
WE ARE HERE			
2	Develop and present preliminary alternatives: Outline different possible futures for the park and provide opportunities for review and comment by the public, agencies, tribes and other park stakeholders.	Winter to Summer 2008	Review alternative concepts newsletter and send us your ideas and concerns. Attend workshops to comment on preliminary alternatives.
3	Prepare and distribute a Draft General Management Plan / Environmental Impact Statement for review and comment by the public, agencies, tribes and other park stakeholders.	Winter to Summer 2009	Review the Draft GMP/EIS and provide written comments. Attend public meetings to learn more about the draft document and to voice your ideas and concerns.
4	Revise draft and publish Final General Management Plan / Environmental Impact Statement: Analyze comments, respond to comments, revise draft document, distribute to the public.	Fall 2009 - Spring 2010	Review the Final GMP/EIS.
5	Implement the approved plan: Prepare and issue a "Record of Decision" finalizing the plan. Begin to implement the plan as funding allows.	Summer 2010 and beyond	Work with the park to implement the GMP. Specific implementation plans and projects will include further public involvement opportunities.

