





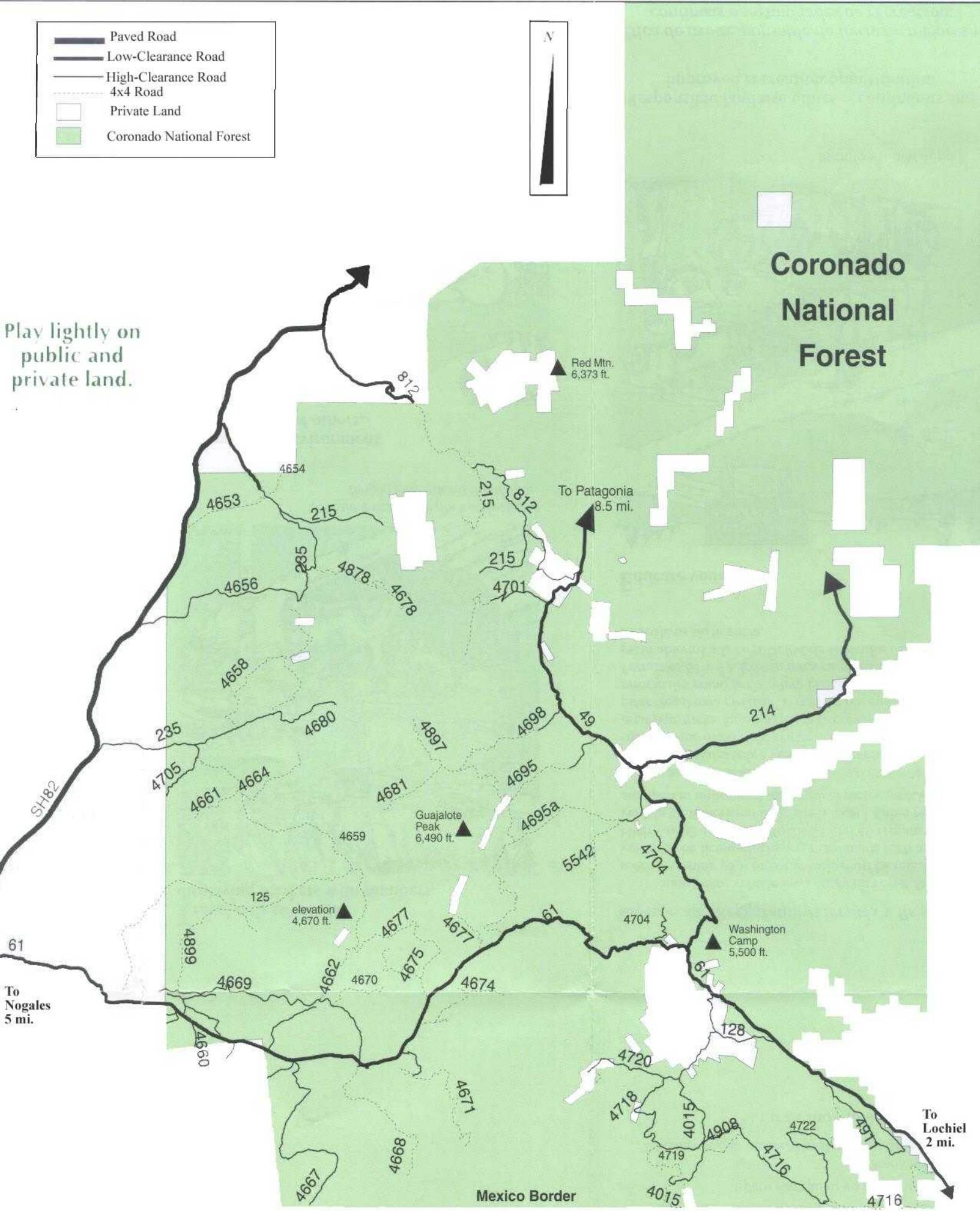


-  Paved Road
-  Low-Clearance Road
-  High-Clearance Road
-  4x4 Road
-  Private Land
-  Coronado National Forest



Coronado National Forest

Play lightly on public and private land.



Red Mtn.
6,373 ft.

To Patagonia
8.5 mi.

Guajalote Peak
6,490 ft.

Washington Camp
5,500 ft.

To Nogales
5 mi.

To Lochiel
2 mi.

Mexico Border