

PROFESSIONAL LABELING Lotronex™ (alosetron HCl)

The Lotronex™ labeling is currently being revised to strengthen the warnings concerning adverse events (e.g. constipation, ischemic colitis). The changes will affect both the professional labeling and information leaflet for the patient (patient package insert).

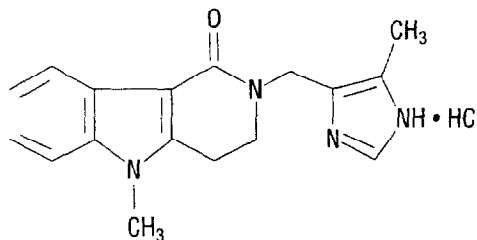
PRODUCT INFORMATION

LOTRONEX™

(alosetron hydrochloride)

Tablets

DESCRIPTION: The active ingredient in LOTRONEX Tablets is alosetron hydrochloride (HCl), a potent and selective antagonist of the serotonin 5-HT₃ receptor type. Chemically, alosetron is designated as 2,3,4,5-tetrahydro-5-methyl-2-[(5-methyl-1H-imidazol-4-yl)methyl]-1H-pyrido[4,3-b] indol-1-one, monohydrochloride. Alosetron is achiral and has the empirical formula: C₁₇H₁₈N₄O•HCl, representing a molecular weight of 330.8. Alosetron is a white to beige solid that has a solubility of 61 mg/mL in water, 42 mg/mL in 0.1M hydrochloric acid, 0.3 mg/mL in pH 6 phosphate buffer, and <0.1 mg/mL in pH 8 phosphate buffer. The chemical structure of alosetron is:



LOTRONEX Tablets for oral administration contain 1.124 mg alosetron HCl equivalent to 1 mg of alosetron. Each tablet also contains the inactive ingredients, lactose (anhydrous), magnesium stearate, microcrystalline cellulose, and pregelatinized starch. The blue film-coat contains hydroxypropyl methylcellulose, titanium dioxide, triacetin, and indigo carmine.

CLINICAL PHARMACOLOGY:

Pharmacodynamics: Mechanism of Action: Alosetron is a potent and selective 5-HT₃ receptor antagonist. 5-HT₃ receptors are nonselective cation channels that are extensively distributed on enteric neurons in the human gastrointestinal tract, as well as other peripheral and central locations. Activation of these channels and the resulting neuronal depolarization affect the regulation of visceral pain, colonic transit and gastrointestinal secretions,

LOTRONEX™(alosecron hydrochloride) Tablets

processes that relate to the pathophysiology of irritable bowel syndrome (IBS). 5-HT₃ receptor antagonists such as alosetron inhibit activation of non-selective cation channels which results in the modulation of the enteric nervous system.

The cause of IBS is unknown. IBS is characterized by visceral hypersensitivity and hyperactivity of the gastrointestinal tract, which lead to abnormal sensations of pain and motor activity. Following distention of the rectum, IBS patients exhibit pain and discomfort at lower volumes than healthy volunteers. Following such distention, alosetron reduced pain and exaggerated motor responses, possibly due to blockade of 5HT₃-receptors.

In healthy volunteers and IBS patients, alosetron (2 mg orally, twice daily for 8 days) increased colonic transit time without affecting orocecal transit time. In healthy volunteers, alosetron also increased basal jejunal water and sodium absorption after a single 4-mg dose. In IBS patients, multiple oral doses of alosetron (4 mg twice daily for 6.5 days) significantly increased colonic compliance.

Single oral doses of alosetron administered to healthy men produced a dose-dependant reduction in the flare response seen after intradermal injection of serotonin. Urinary 6-β-hydroxycortisol excretion decreased by 52% in elderly subjects after 27.5 days of alosetron 2 mg orally twice daily. This decrease was not statistically significant. In another study utilizing alosetron 1 mg orally twice daily for 4 days, there was a significant decrease in urinary 6-β-hydroxycortisol excretion. However, there was no change in the ratio of 6-β-hydroxycortisol to cortisol, indicating a possible decrease in cortisol production. The clinical significance of these findings is unknown.

Pharmacokinetics: The pharmacokinetics of alosetron have been studied after single oral doses ranging from 0.05 mg to 16 mg in healthy men. The pharmacokinetics of alosetron have also been evaluated in healthy women and men and in patients with IBS after repeated oral doses ranging from 1 mg twice daily to 8 mg twice daily.

Absorption: Alosetron is rapidly absorbed after oral administration with a mean absolute bioavailability of approximately 50 to 60% (approximate range 30 to >90%). After administration of radiolabeled alosetron, only 1% of the dose was recovered in the feces as

LOTRONEX™(alosetron hydrochloride) Tablets

unchanged drug. Following oral administration of a 1 mg alosetron dose to young men, a peak plasma concentration of approximately 5 ng/mL occurs at 1 hour. In young women, the mean peak plasma concentration is approximately 9 ng/mL, with a similar time to peak.

Food Effects: Alosetron absorption is decreased by approximately 25% by co-administration with food, with a mean delay in time to peak concentration of 15 minutes (see DOSAGE AND ADMINISTRATION).

Distribution: Alosetron demonstrates a volume of distribution of approximately 65 to 95 L. Plasma protein binding is 82% over a concentration range of 20 to 4000 ng/mL.

Metabolism and Elimination: Plasma concentrations of alosetron increase proportionately with increasing single oral doses up to 8 mg and more than proportionately at a single oral dose of 16 mg. Twice-daily oral dosing of alosetron does not result in accumulation. The terminal elimination half-life of alosetron is approximately 1.5 hours (plasma clearance is approximately 600 mL/min). Population pharmacokinetic analysis in IBS patients confirmed that alosetron clearance is minimally influenced by doses up to 8 mg.

Renal elimination of unchanged alosetron accounts for only 6% of the dose. Renal clearance is approximately 94 mL/min.

Alosetron is extensively metabolized in humans. The biological activity of these metabolites is unknown. A mass balance study was performed utilizing an orally administered dose of unlabeled and ¹⁴C-labeled alosetron. This study indicates that on a molar basis, alosetron metabolites reach additive peak plasma concentrations 9-fold greater than alosetron and that the additive metabolite AUCs are 13 fold greater than alosetron's AUC. Plasma radioactivity declined with a half-life two-fold longer than that of alosetron, indicating the presence of circulating metabolites. Approximately 73% of the radiolabeled dose was recovered in urine with another 24% of the dose recovered in feces. Only 7% of the dose was recovered as unchanged drug. At least 13 metabolites have been detected in urine. The predominant product in urine was a 6-hydroxy metabolite (15% of the dose). This metabolite was secondarily metabolized to a glucuronide that was also present in urine (14% of the dose). Smaller amounts of the 6-hydroxy metabolite and the 6-O-glucuronide also appear to be present in feces. A bis-oxidized dicarbonyl accounted for 14% of the dose and its monocarbonyl precursor accounted for another 4% in urine and 6% in feces. No other

LOTRONEX™(alosecron hydrochloride) Tablets

urinary metabolite accounted for more than 4% of the dose. Glucuronide or sulfate conjugates of unchanged alosecron were not detected in urine.

In studies of Japanese men, an N-desmethyl metabolite was found circulating in plasma in all subjects and accounted for up to 30% of the dose in one subject when alosecron was administered with food. The clinical significance of this finding is unknown.

Alosecron is metabolized by human microsomal cytochrome P450 (CYP), shown in vitro to involve enzymes 2C9 (30%), 3A4 (18%), and 1A2 (10%). Non-CYP mediated Phase I metabolic conversion also contributes to an extent of about 11% (see PRECAUTIONS: Drug Interactions).

Population Subgroups:

Age: In some studies in healthy men or women, plasma concentrations were elevated by approximately 40% in individuals 65 years and older compared to young adults. However, this effect was not consistently observed in men (see PRECAUTIONS: Geriatric Use and DOSAGE AND ADMINISTRATION: Geriatric Patients).

Gender: Plasma concentrations are 30% to 50% lower and less variable in men compared to women given the same oral dose. Population pharmacokinetic analysis in IBS patients confirmed that alosecron concentrations were influenced by gender (27% lower in men).

Reduced Hepatic Function: No pharmacokinetic data are available in this patient group (see PRECAUTIONS: Hepatic Insufficiency and DOSAGE AND ADMINISTRATION: Patients with Hepatic Impairment).

Reduced Renal Function: Renal impairment (creatinine clearance 4 to 56 mL/min) has no effect on the renal elimination of alosecron due to the minor contribution of this pathway to elimination. The effect of renal impairment on metabolite kinetics and the effect of end-stage renal disease have not been assessed (see DOSAGE AND ADMINISTRATION: Patients with Renal Impairment).

CLINICAL TRIALS: Two 12-week treatment, multi-center, double-blind, placebo-controlled, dose-ranging studies were conducted to determine the dosage of oral LOTRONEX for subsequent evaluation in efficacy studies.

LOTRONEX™(alosetron hydrochloride) Tablets

In women, of the doses studied, 1 mg of LOTRONEX twice daily was significantly more effective than placebo in providing relief of IBS pain and discomfort, decreasing the proportion of days with urgency, decreasing stool frequency, and producing firmer stools. Efficacy in men, as assessed by producing adequate relief of IBS pain and discomfort, was not demonstrated at any dose of LOTRONEX.

The efficacy and safety of 1 mg of oral LOTRONEX twice daily for 12 weeks was studied in two US multi-center, double-blind, placebo-controlled trials of identical design (Studies 1 and 2) in non-constipated women with IBS meeting the Rome Criteria (see Appendix) for at least 6 months. For enrollment into the studies, patients were required to meet entry pain and stool consistency criteria. An average pain score of at least mild pain, as collected during a two-week screening period, was required. Women with severe pain were excluded. An entry stool consistency requirement was also incorporated to target women whose predominant bowel symptom was diarrhea or in which diarrhea was a prominent feature in their alternating pattern. Women with a history of severe constipation were excluded. Men were not studied.

The primary efficacy measure in these studies was the woman's weekly assessment of adequate relief of IBS pain and discomfort. Key secondary measures included percentage of days with urgency and daily assessment of stool frequency and consistency. Study 1 enrolled 647 women (71% diarrhea-predominant, 28% alternating between diarrhea and constipation, and 1% constipation-predominant) while Study 2 enrolled 626 women (71% diarrhea-predominant, 27% alternating between diarrhea and constipation, and 2% constipation-predominant). At entry into the studies, most women reported mild to moderate pain intensity and stool consistency of formed to loose.

In both trials, LOTRONEX 1 mg administered twice daily was significantly more effective than placebo in providing relief of IBS pain and discomfort.

In both Study 1 and Study 2, the beneficial effect on IBS pain and discomfort was demonstrated only in women with diarrhea-predominant IBS. Data in Figures 1 and 2 are presented for this subgroup. In Study 1, significantly more women reported relief of their abdominal pain and discomfort within 1 week of starting alosetron therapy than those who received placebo (Figure 1) start. In Study 2, this treatment effect was observed within

LOTRONEX™(alosecron hydrochloride) Tablets

4 weeks (Figure 2). Once attained, significant treatment effect persisted throughout the remainder of the treatment period. Upon discontinuing LOTRONEX, symptoms returned. Within one week after discontinuing therapy, there was no difference between placebo and alosecron-treated women.

Figure 1: Percentage of Women (Diarrhea-Predominant) Reporting Relief of IBS Pain and Discomfort in Study 1

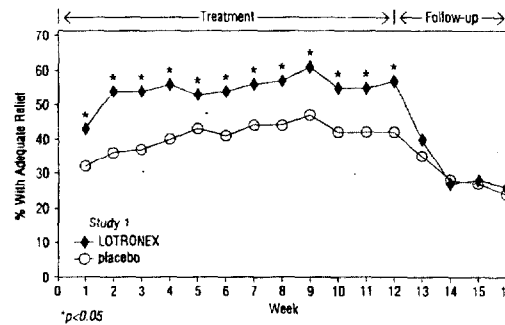
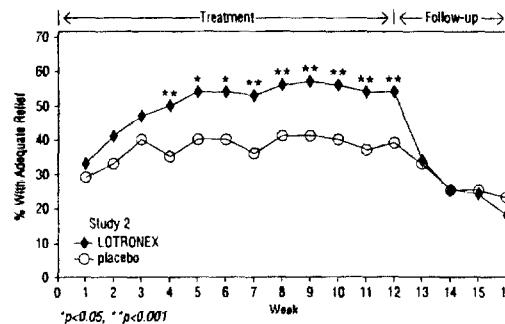


Figure 2: Percentage of Women (Diarrhea-Predominant) Reporting Relief of IBS Pain and Discomfort in Study 2



In each study, women who received LOTRONEX reported a significant decrease in the percentage of days with urgency as compared to those who received placebo. Treatment with LOTRONEX also resulted in firmer stools and a significant decrease in stool frequency.

LOTRONEX™(alosecron hydrochloride) Tablets

Significant improvement of these symptoms occurred within the first week of treatment and persisted throughout the 12 weeks of therapy. Upon discontinuance of treatment these symptoms returned. Within one week after discontinuing therapy, there was no difference between placebo and alosetron-treated patients. The efficacy of LOTRONEX for treatment longer than 12 weeks has not been established.

INDICATIONS AND USAGE: LOTRONEX is indicated for the treatment of irritable bowel syndrome (IBS) in women whose predominant bowel symptom is diarrhea.

The safety and effectiveness of LOTRONEX in men have not been established.

CONTRAINDICATIONS: LOTRONEX is contraindicated in patients known to have hypersensitivity to any component of the product.

WARNINGS: Acute ischemic colitis was infrequently* reported in patients receiving LOTRONEX in 3-month clinical trials. The reported cases resolved over several days to weeks without sequelae or complications following supportive management. A causal association between treatment with LOTRONEX and acute colitis has not been established, nor have risk factors been identified. LOTRONEX should be discontinued in patients experiencing rectal bleeding and a sudden worsening of abdominal pain. These patients should be promptly evaluated and appropriate diagnostic testing considered

Constipation is a frequent and dose-related side effect of treatment with LOTRONEX. LOTRONEX should not be used in IBS patients who are currently constipated or whose predominant bowel symptom is constipation. In clinical studies, 25 to 30% of patients receiving alosetron experienced constipation. For the majority of these patients, constipation was mild to moderate in intensity and self-limited; however, approximately 9% of patients studied required interruption of treatment for a few days and approximately 10% could not tolerate twice daily dosing on a continuous basis and discontinued therapy. Patients

LOTRONEX™(alosetron hydrochloride) Tablets

experiencing constipation who completed the 12-week treatment period had similar relief of abdominal pain as patients not experiencing constipation who completed the study.

Management of constipation with usual care including laxatives, fiber, or with a brief interruption of therapy may be considered. (See DOSAGE AND ADMINISTRATION)

*Infrequent is defined as occurring in 1/100 to 1/1000 patients.

PRECAUTIONS:

Information for Patients: See the tear-off leaflet at the end of the labeling for Information for the Patient.

Drug Interactions: In vitro human liver microsome studies and an in vivo metabolic probe study demonstrated that alosetron did not inhibit CYP enzymes 2D6, 3A4, 2C9, or 2C19. In vitro, at total drug concentrations 27-fold higher than peak plasma concentrations observed with the 1-mg dosage, alosetron inhibited CYP enzymes 1A2 (60%) and 2E1 (50%). In an in vivo metabolic probe study, alosetron did not inhibit CYP2E1 but did produce 30% inhibition of both CYP1A2 and N-acetyltransferase. Although not studied with alosetron, inhibition of N-acetyltransferase may have clinically relevant consequences for drugs such as isoniazid, procainamide, and hydralazine. The effect on CYP1A2 was explored further in a clinical interaction study with theophylline and no effect on metabolism was observed. Another study showed that alosetron had no clinically significant effect on plasma concentrations of the oral contraceptive agents ethinyl estradiol and levonorgestrel (CYP3A4 substrates). A clinical interaction study was also conducted with alosetron and the CYP3A4 substrate cisapride. No significant effects on cisapride metabolism or QT interval were noted. The effect of alosetron on monoamine oxidases and on intestinal first pass secondary to high intraluminal concentrations have not been examined. Based on the above data from in vitro and in vivo studies, it is unlikely that alosetron will inhibit the hepatic metabolic clearance of drugs metabolized by the major CYP enzyme 3A4, as well as the CYP enzymes 2D6, 2C9, 2C19, 2E1, or 1A2.

LOTRONEX™(alose tron hydrochloride) Tablets

Alose tron does not appear to induce the major cytochrome P450 (CYP) drug metabolizing enzyme 3A. Alose tron also does not appear to induce CYP enzymes 2E1 or 2C19. It is not known whether alose tron might induce other enzymes.

Because alose tron is metabolized by a variety of hepatic CYP drug-metabolizing enzymes, inducers or inhibitors of these enzymes may change the clearance of alose tron. The effect of induction or inhibition of individual pathways on metabolite kinetics and pharmacodynamic consequences has not been examined.

Hepatic Insufficiency: Due to the extensive hepatic metabolism and first pass metabolism of alose tron and metabolites, increased exposure to alose tron is likely to occur in patients with hepatic insufficiency.

Carcinogenesis, Mutagenesis, Impairment of Fertility: In 2-year oral studies, alose tron was not carcinogenic in mice at doses up to 30 mg/kg/day or in rats at doses up to 40 mg/kg/day. These doses are, respectively, about 60 to 160 times the recommended human dose of alose tron of 2 mg/day (1 mg twice daily) based on body surface area. Alose tron was not genotoxic in the Ames tests, the mouse lymphoma cell (L5178Y/TK⁺) forward gene mutation test, the human lymphocyte chromosome aberration test, the ex vivo rat hepatocyte unscheduled DNA synthesis (UDS) test, or the in vivo rat micronucleus test for mutagenicity. Alose tron at oral doses up to 40 mg/kg/day (about 160 times the recommended daily human dose based on body surface area) was found to have no effect on fertility and reproductive performance of male or female rats.

Pregnancy: Teratogenic Effects: Pregnancy Category B. Reproduction studies have been performed in rats at doses up to 40 mg/kg/day (about 160 times the recommended human dose based on body surface area) and rabbits at oral doses up to 30 mg/kg/day (about 240 times the recommended daily human dose based on body surface area). These studies have revealed no evidence of impaired fertility or harm to the fetus due to alose tron. There are, however, no adequate and well-controlled studies in pregnant women. Because animal reproduction studies are not always predictive of human response, LOTRONEX should be used during pregnancy only if clearly needed.

Nursing Mothers: Alose tron and/or metabolites of alose tron are excreted in the breast milk of lactating rats. It is not known whether alose tron is excreted in human milk. Because many

LOTRONEX™(alosetron hydrochloride) Tablets

drugs are excreted in human milk, caution should be exercised when LOTRONEX is administered to a nursing woman.

Pediatric Use: Safety and effectiveness in pediatric patients have not been established.

Geriatric Use: Of all patients who received at least one dose of alosetron in premarketing studies, 211 were 65 years of age and over and 39 were 75 years of age and over. The safety profile of LOTRONEX was similar in older and younger patients.

In two placebo-controlled IBS safety and efficacy trials (Studies 1 and 2), 60 patients 65 years of age and over and 14 patients 75 years of age and over received 1-mg oral doses of LOTRONEX twice daily for up to 12 weeks. In both studies, subgroup analyses showed no evidence of differential treatment effects across the age categories assessed. Other reported clinical experience has not identified differences in responses between elderly and younger patients, but greater sensitivity of some older individuals cannot be ruled out (see CLINICAL PHARMACOLOGY: Population Subgroups: Age).

ADVERSE REACTIONS: In two large, placebo-controlled clinical trials conducted in the US (Studies 1 and 2), women (18 years of age and older) were treated with 1 mg of LOTRONEX twice-daily for up to 12 weeks. The adverse events in Table 1 were reported in 1% or more of patients who received LOTRONEX and occurred more frequently on LOTRONEX than on placebo: a statistically significant difference was observed for constipation in patients treated with LOTRONEX compared to placebo ($p < 0.0001$).

LOTRONEX™(alosetron hydrochloride) Tablets

**Table 1: Adverse Events Reported in ≥1% of Female Patients
and More Frequently on LOTRONEX 1 mg B.I.D. than Placebo
(Studies 1 and 2)**

Body System Adverse Event	LOTRONEX (N = 632)	Placebo (N = 637)
Cardiovascular Hypertension	2%	<1%
Ear, Nose, and Throat Allergic rhinitis	2%	<1%
Throat and tonsil discomfort and pain	1%	<1%
Bacterial ear, nose, and throat infections	1%	<1%
Gastrointestinal Constipation	28%	5%
Nausea	7%	6%
Gastrointestinal discomfort and pain	5%	4%
Abdominal discomfort and pain	5%	3%
Gastrointestinal gaseous symptoms	3%	2%
Viral gastrointestinal infections	3%	2%
Dyspeptic symptoms	3%	1%
Abdominal distention	2%	<1%
Hemorrhoids	2%	<1%
Neurology Sleep disorders	3%	2%
Psychiatry Depressive disorders	2%	1%

LOTRONEX™(alosecron hydrochloride) Tablets

Gastrointestinal: The most frequent adverse event reported by patients treated with LOTRONEX was constipation (see WARNINGS). In clinical studies, constipation was reported in 25 to 30% of patients treated with LOTRONEX 1 mg twice daily for up to 12 weeks (n = 702). This effect was statistically significant compared to placebo (p<0.0001). Ten percent (10%) of patients treated with LOTRONEX withdrew from the studies due to constipation. Of the patients reporting constipation, 75% reported a single episode with the mean time to constipation onset of about 3 weeks. Occurrences of constipation were generally mild to moderate in intensity and transient in nature. Most constipation events resolved spontaneously with continued treatment. In studies 1 and 2, 9% of patients treated with LOTRONEX reported constipation and 4 consecutive days with no bowel movement; by protocol, therapy was withheld for 1 to 4 days. Following interruption of treatment, 88% of the affected patients resumed bowel movements within the 4-day period and were able to re-initiate treatment with LOTRONEX.

Hepatic: A similar incidence in elevation of ALT (>3-fold) was seen in patients receiving LOTRONEX or placebo (0.5% vs 0.4%) in studies of 12 weeks' and 12 months' duration. A single case of hepatitis (elevated ALT, AST, alkaline phosphatase, and bilirubin) without jaundice was reported in a 12-week study. A causal association with LOTRONEX has not been established.

Long-Term Safety: The pattern and frequency of adverse events in a long-term, placebo-controlled safety study in which women with IBS (n = 473) were treated with LOTRONEX 1 mg twice daily for up to 12 months were essentially the same as observed in 12-week safety and effectiveness trials. There were no reports of acute colitis in these alosetron-treated women.

Other Events Observed During the Premarketing Evaluation of LOTRONEX: During its premarketing assessment, multiple and single doses of LOTRONEX were administered resulting in 2574 patient exposures in 46 completed clinical studies. The conditions, dosages, and duration of exposure to LOTRONEX varied between trials, and the studies included healthy male and female volunteers as well as male and female patients with IBS.

In the listing that follows, reported adverse events were classified using a standardized coding dictionary. Only those events that an investigator believed were possibly related to

LOTRONEX™(alosetron hydrochloride) Tablets

alosetron, occurred in at least 2 patients, and occurred at a greater frequency during treatment with LOTRONEX than during placebo administration are presented. Serious adverse events occurring in at least one patient for which an investigator believed there was reasonable possibility that the event was related to alosetron treatment and which occurred at a greater frequency in LOTRONEX than placebo-treated patients are also presented.

In the following listing, events are categorized by body system. Within each body system, events are presented in descending order of frequency. The following definitions are used: *Infrequent* adverse events are those occurring on one or more occasion in 1/100 to 1/1000 patients; *Rare* adverse events are those occurring on one or more occasion in fewer than 1/1000 patients.

Although the events reported occurred during treatment with LOTRONEX, they were not necessarily caused by it.

Cardiovascular - Infrequent: Arrhythmias.

Drug Interaction, Overdose and Trauma - Rare: Contusions and hematomas.

Ear Nose, and Throat - Infrequent: Nasal signs and symptoms. ***Rare:*** Ear signs and symptoms.

Eyes - Rare: Photophobia.

Gastrointestinal - Infrequent: Ischemic colitis. ***Rare:*** proctitis.

Hepatobiliary Tract and Pancreas - Infrequent: Abnormal bilirubin levels.

Lower Respiratory - Infrequent: Breathing disorders. ***Rare:*** Cough.

Neurological - Rare: Sedation and abnormal dreams.

Non-site Specific - Rare: Allergies, allergic reactions, unusual odors and taste.

Psychiatry - Infrequent: Anxiety.

Reproduction - Infrequent: Menstrual disorders. ***Rare:*** Sexual function disorders.

Skin - Rare: Acne and folliculitis.

Urology - Rare: Urinary infections, polyuria, and diuresis.

DRUG ABUSE AND DEPENDENCE: LOTRONEX has no known potential for abuse or dependence.

LOTRONEX™(alosetron hydrochloride) Tablets

OVERDOSAGE: There is no specific antidote for overdose of LOTRONEX. Patients should be managed with appropriate supportive therapy. Individual oral doses as large as 16 mg have been administered in clinical studies without significant adverse events. This dose is 8 times higher than the recommended total daily dose. Inhibition of the metabolic elimination and reduced first pass of other drugs might occur with overdoses of alosetron (see PRECAUTIONS: Drug Interactions). Single oral doses of LOTRONEX at 15 mg/kg in female mice and 60 mg/kg in female rats (30 and 240 times, respectively, the recommended human dose based on body surface area) were lethal. Symptoms of acute toxicity were labored respiration, subdued behavior, ataxia, tremors, and convulsions.

DOSAGE AND ADMINISTRATION:

Usual Dose in Adults: The recommended adult dosage of LOTRONEX is 1 mg taken orally twice daily with or without food. Individual patients who experience constipation may need to interrupt treatment (see WARNINGS and ADVERSE REACTIONS: Gastrointestinal).

Pediatric Patients: No studies have been conducted in patients less than 18 years of age (see PRECAUTIONS: Pediatric Use).

Geriatric Patients: No dosage adjustment is recommended for elderly patients (65 years of age and older) (see CLINICAL PHARMACOLOGY: Population Subgroups: Age and PRECAUTIONS: Geriatric Use).

Patients with Renal Impairment: No dosage adjustment is recommended for patients with renal impairment (creatinine clearance 4 to 56 mL/min) (see CLINICAL PHARMACOLOGY: Reduced Renal Function).

Patients with Hepatic Impairment: No studies have been conducted in patients with hepatic impairment (see PRECAUTIONS: Hepatic Insufficiency and CLINICAL PHARMACOLOGY: Population Subgroups: Reduced Hepatic Function).

HOW SUPPLIED: LOTRONEX Tablets, 1 mg (1.124 mg alosetron HCl equivalent to 1 mg alosetron), are blue, oval, film-coated tablets engraved with GX CT1 on one face in bottles

LOTRONEX™(alosetron hydrochloride) Tablets

of 60 tablets (NDC 0173-0690-00) and 120 tablets (NDC 0173-0690-03) with child-resistant closures and Unit Dose Pack of 60 (NDC 0173-0690-04).

Store at 25°C (77°F); excursions permitted to 15-30°C (59-86°F) [see USP Controlled Room Temperature].

APPENDIX

Diagnostic Criteria: Irritable Bowel Syndrome (IBS)*
At least three months continuous or recurrent symptoms of:
1. abdominal pain or discomfort which is:
(a) relieved with defecation,
(b) and/or associated with a change in frequency of stool,
(c) and/or associated with a change in consistency of stool;
and
1. two or more of the following, at least a quarter of occasions or days;
(a) altered stool frequency,
(b) altered stool form (lumpy/hard or loose/watery stool),
(c) altered stool passage (straining, urgency, or feeling of incomplete evacuation),
(d) passage of mucus,
(e) bloating or feeling of abdominal distention

*Thompson WG, Creed F, Drossman DA, et al. Functional bowel disease and functional abdominal pain, *Gastroenterol Int* 1992; 5: 75-91.

GlaxoWellcome

Glaxo Wellcome Inc.

Research Triangle Park, NC 27709

US Patent No. 5,360,800

©Copyright 2000, Glaxo Wellcome Inc. All rights reserved.

Date of Issue: February 2000

RL-XXX

PATIENT LABELING Lotronex™ (alosetron HCl)

The Lotronex™ labeling is currently being revised to strengthen the warnings concerning adverse events (e.g. constipation, ischemic colitis). The changes will affect both the professional labeling and information leaflet for the patient (patient package insert).

LOTRONEX™(alosecron hydrochloride) Tablets

PHARMACIST--DETACH HERE AND GIVE LEAFLET TO PATIENT.

Information for the Patient

LOTRONEX™(alosecron hydrochloride) Tablets

Read this information carefully before you start taking LOTRONEX (pronounced LOW-trah-nex) Tablets. Read the information included with LOTRONEX each time you refill your prescription, in case something has changed. This information does not take the place of discussions with your doctor.

What is LOTRONEX?

LOTRONEX is a prescription medicine used to treat irritable bowel syndrome (IBS) in women who have diarrhea as their main symptom. Lotronex has not been shown to work in men with IBS. IBS has been called by many names including irritable colon, and spastic colon. IBS is a medical condition causing cramping abdominal pain, abdominal discomfort, urgency (a sudden need to have a bowel movement), and irregular bowel habits such as diarrhea or constipation.

It is not clear why some people develop IBS. It may be caused by your body's overreaction to a body chemical called serotonin. This overreaction may cause your intestinal system to be overactive. LOTRONEX works by blocking the action of serotonin on the intestinal system. This reduces the cramping abdominal pain, abdominal discomfort, urgency, and diarrhea caused by IBS.

LOTRONEX may not work for every patient who takes it. For women who are helped by LOTRONEX, the medicine works faster in some and slower in others. Some women taking LOTRONEX will have relief from their IBS pain and discomfort within the first week of

LOTRONEX™(alosetron hydrochloride) Tablets

use. Other women have relief of abdominal pain and discomfort within four weeks of starting LOTRONEX. Within one week, urgency and diarrhea occur less often for some patients. When you stop taking LOTRONEX, IBS symptoms will likely return within one week.

A. Who should not take LOTRONEX?

You should not start taking LOTRONEX when you are constipated or constipated most of the time.

Do not take LOTRONEX if you are allergic to LOTRONEX or any of its ingredients. The active ingredient in LOTRONEX is alosetron hydrochloride. The inactive ingredients are listed at the end of this leaflet.

Lotronex may not be right for you. Tell your doctor if you are:

- constipated most of the time.
- pregnant or plan to become pregnant.
- breast feeding.
- taking or planning to take any other medicines, including those you can get without a prescription.

B. How should LOTRONEX be taken?

Take LOTRONEX exactly as your doctor prescribes it. You can take Lotronex with or without food. If you miss a dose of LOTRONEX, do not double the next dose. Instead, simply go to the next regularly scheduled dosing time and take your normal prescribed dose of LOTRONEX

What are the possible side effects of LOTRONEX?

LOTRONEX™(alosetron hydrochloride) Tablets

If you have a sudden worsening of abdominal pain or if you see blood in your stool (bowel movement), call your doctor right away. These symptoms may be a sign of a serious medical condition.

Constipation is a common side effect of treatment with LOTRONEX. If you become constipated while taking LOTRONEX, call your doctor. Your doctor may tell you to stop taking LOTRONEX or suggest other ways to manage your constipation.

This description of side effects is not complete. Your doctor or pharmacist can give you a more complete list of side effects with LOTRONEX. Talk to your doctor right away about any side effects you have.

Medicines are sometimes prescribed for purposes not listed in patient information leaflets. Do not use Lotronex for a condition for which it was not prescribed. Do not share Lotronex with other people. As with any medicine, LOTRONEX may be harmful without appropriate medical supervision.

If you have questions about Lotronex, ask your doctor or pharmacist. They can show you detailed information about Lotronex that was written for health professionals.

Inactive Ingredients: Lactose (anhydrous), magnesium stearate, microcrystalline cellulose, and pregelatinized starch. The blue film-coat contains hydroxypropyl methylcellulose, titanium dioxide, triacetin, and indigo carmine.

GlaxoWellcome

Glaxo Wellcome Inc.

Research Triangle Park, NC 27709

US Patent No. 5,360,800

©Copyright 2000, Glaxo Wellcome Inc. All rights reserved.

LOTRONEX™(alosetron hydrochloride) Tablets

Date of Issue: February 2000

RL-XXX