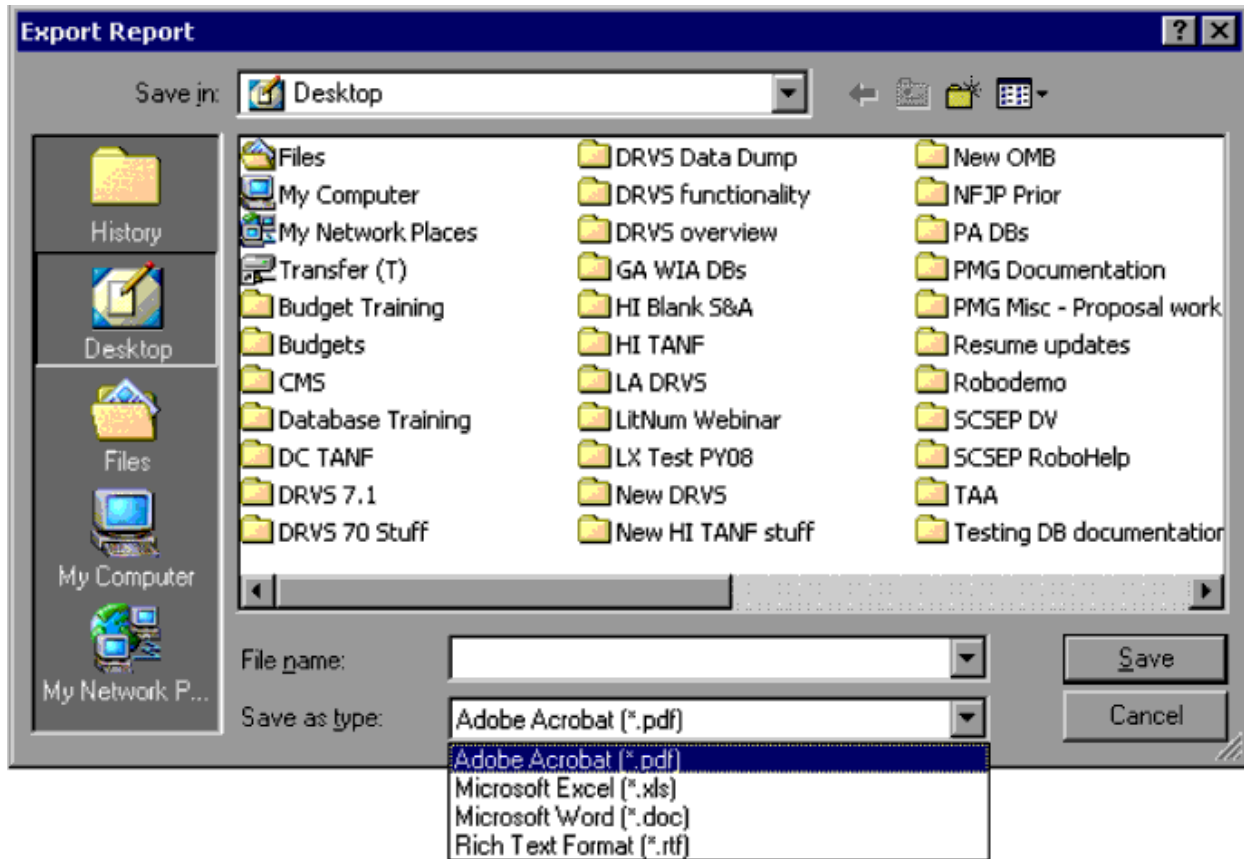


## What's New for DRVS 7.1.3

### **Adds the ability to export reports in Crystal Report (rpt) and Microsoft Excel Data Only formats**

States that have tried to export their error reports and sample reports, among others, into either Crystal Reports or Microsoft Excel data only formats have discovered that these options are not present in the “Save as type” dropdown (see below).



The three files in the DRVS 7.1.3 zip file correct add these two formats in the drop down list.

**Please Note:** States must complete the DRVS 7.1 upgrade following the instructions listed in “Instructions for Implementing DRVS 7.1” before applying the DRVS 7.1.3 upgrade.

If you have any questions or need assistance, please contact [WIATA@mathematica-mpr.com](mailto:WIATA@mathematica-mpr.com) and cc your regional ETA staff.