

# CANCER IMMUNOLOGY & HEMATOLOGY NEWSLETTER

Volume 2, Number 2

August 2000

## CIHB HAPPENINGS

### Dr. John Sogn Appointed Deputy Director

John Sogn, Ph.D, Chief of the Cancer Immunology & Hematology Branch of the Division of Cancer Biology, has accepted the position of Deputy Director of the Division. Dr. Sogn took over the reigns on August 1<sup>st</sup>. Dr. Sogn's Program Director duties have been assigned to the newest addition to the Branch, Dr. Susan McCarthy from the University of Pittsburgh Cancer Center.

Dr. McCarthy is temporarily attached to the Immunology and Hematology Branch handling tumor immunology grant applications. Dr. McCarthy has had an active research career in tumor immunology and is well qualified to assume portfolio management in this research field. Those grantees for whom Dr. Sogn was the Program Director, your new Program Director is now Dr. McCarthy.

### Grantsmanship tips

We would also like to make grantees aware of the Comprehensive Minority BioMedical Research Supplement Program. This program offers supplements to active grants to support research at all levels by minority scientists or trainees. This includes high-school students, undergraduates, graduate students, post-doctoral fellows and faculty. One of the "Related Links" is to the Comprehensive Minority Biomedical Branch, which handles the very useful (and generally quite easy to get) supplements to add someone to your grant who is from an underrepresented minority group, has a disability, or is reentering science after a break to deal with family responsibilities. Information on all of these supplement programs can be had by going to the link and selecting "function statement". The url for the "Funding Opportunities" site is <http://deainfo.nci.nih.gov/funding.htm>. For full information contact Dr Sanya Springfield's Office at (301) 496-7344.

### Raising Your Literature Consciousness.

Immunotherapeutic uses of cytokines to facilitate tumor regression has been shown by many laboratories to have potential clinical benefits in tumor bearing hosts. The kinetics and mode of cytokine injection are variables that are most important to obtain optimal tumor regression, and identification of these variables requires additional study. Another major issue in tumor immunotherapy concerns the identification of therapeutic conditions that will enable the host to continued resistance to tumor challenge. A unique approach to these questions was recently reported by Nejat Egilmez from Richard Bankert's laboratory (*Cancer Res.* 60, 3832, 2000). IL-12 was incorporated into biodegradable polylactic acid microspheres (IL-12 microspheres). Utilizing various protocols, the IL-12 microspheres were injected into mice bearing lung tumors. Tumor regression, metastasis, and resistance to tumor challenge were assayed. *In situ* tumor vaccination (i.e. direct injection of IL-12 microspheres into the primary tumor), produced tumor regression and prevented metastasis to the lung. In contrast, injection of the IL-12 microspheres simultaneously with either attenuated or live tumor cells was not as efficacious as *in situ* injection of IL-12. Further, neither IL-2 nor GM-CSF were as effective as IL-12. When mice were challenged with live tumor cells, complete resistance was noted in mice that had undergone *in situ* IL-12 microsphere injection induced tumor regression. This resistance indicated that systemic immunity developed upon tumor regression. The authors proposed that the sustained release of IL-12 within the tumor induced tumor specific immunity in a clinically relevant setting. The cellular mechanisms responsible for tumor eradication and resistance remain to be fully elucidated.

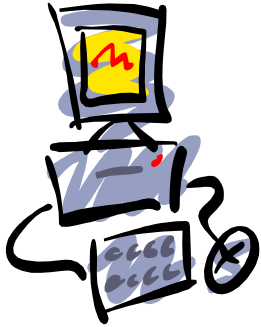
### NOTICE TO READERS

The Newsletter will be posted on the DCB web page. We will do a "notification" by email to alert you and to supply you with the url. NCI now has a website listing most of the funding information an applicant might want to see. Among other things, it

lists all of the active Program Announcements (PA). This is very useful, because the NIH Guide does not note when a PA becomes inactive. There is other information, and quite a few useful links. Have a look, and let us know if there is additional information that would be useful.

### **NCI Grant Process gone electronic!**

*By Yvonne Douglas-Tabor*



Despite all the advances in technology, voice mail, email and your web linked cell phone, it's still a chore to keep up with the status of 20,000 or more active grants for the staff that manage them. To make our work a lot easier and less stressful, the Grants Administration Branch of the NCI has

launched an Electronic Image Management System called **eGrants** to provide electronic access to NCI official grant files. To date, 2.5 million grant documents have been converted to indexed electronic images. **eGrants** enables authorized users to access official grant file multi-page documents such as grant applications, progress reports, and other administrative grant information. To be honest, I love it and use it all the time. Accessed documents can be searched, printed, annotated or transmitted electronically to another user. I'm never required to leave this program to get the info or document I need. But it doesn't stop there. Eventually you, the extramural scientist, will be able to sit in front of your PC or Mac, fill out your application and when it's completed -Voila!- submit it electronically to the appropriate NCI office. Get ready! It's on the way.

### **Reminder**

Check the status of your IACUC and IRB approval dates. Having updated assurances decreases delays in funding.

## **HOT LINKS**

The Division of Cancer Biology Home Page - <http://www.nci.nih.gov/dcb/dcbhom.htm> has a table of contents with useful links to **DCB funding opportunities**:

<http://www.nci.nih.gov/dcb/DCBRFAS.HTM>

### **If you want to contact us:**

**Tel:** 301/496-7815

**FAX:** 301/480-2844

### **email:**

Dr. McCarthy - [mccarths@mail.nih.gov](mailto:mccarths@mail.nih.gov)

Dr. Finerty - [fin@nih.gov](mailto:fin@nih.gov)

Dr. Mufson - [am214@nih.gov](mailto:am214@nih.gov)

Yvonne Douglas-Tabor - [duglasy@mail.nih.gov](mailto:duglasy@mail.nih.gov)

Norwood Uzzell - [nu1o@nih.gov](mailto:nu1o@nih.gov)

### **Regular mail:**

National Cancer Institute  
Division Of Cancer Biology  
Cancer Immunology & Hematology  
Executive Plaza North  
6130 Executive Blvd.  
Suite 5000  
Bethesda, Maryland 20892-7388

### **FedEx or UPS:**

National Cancer Institute  
Division of Cancer Biology  
Cancer Immunology & Hematology  
Executive Plaza  
North  
Suite 5000  
Rockville,  
Maryland 20852

Remember  
Thy  
Sunscreen

